

Supporting Information for:

DETAILED PRODUCT ANALYSIS DURING THE LOW AND INTERMEDIATE TEMPERATURE OXIDATION OF ETHYLCYCLOHEXANE

B. HUSSON¹, O. HERBINET¹, P.A. GLAUDE¹, S.S. AHMED²,
F. BATTIN-LECLERC¹

¹Laboratoire Réactions et Génie de Procédés, KINCOM,

CNRS, Nancy Université,

1 rue Grandville, BP 451, 54001 NANCY Cedex, France

²Saudi-Aramco, Research & Development Center,

Dhahran 31311, Saudi Arabia

Experimental mass spectra of C₈H₁₄O species (126 amu).

An example of chromatogram allowing the separation of these species is given in Figure 10 of the main text.

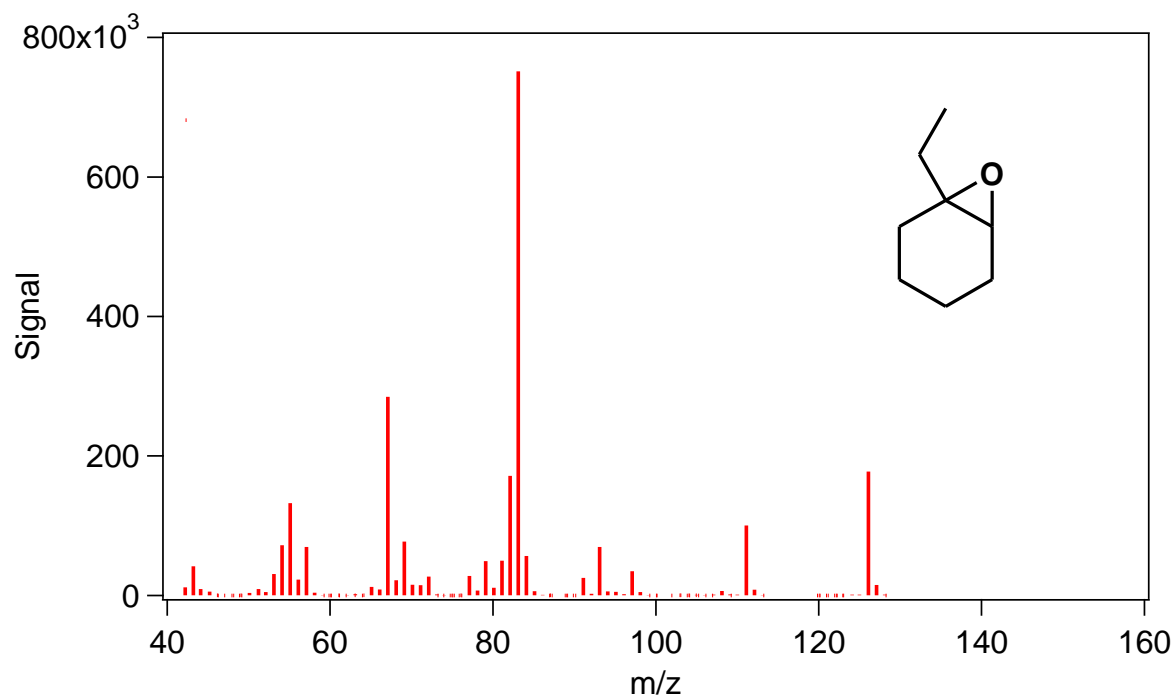


Figure S1: Mass spectrum of the species corresponding to the peak at the retention time of 31.8 min in the chromatogram of Figure 10.

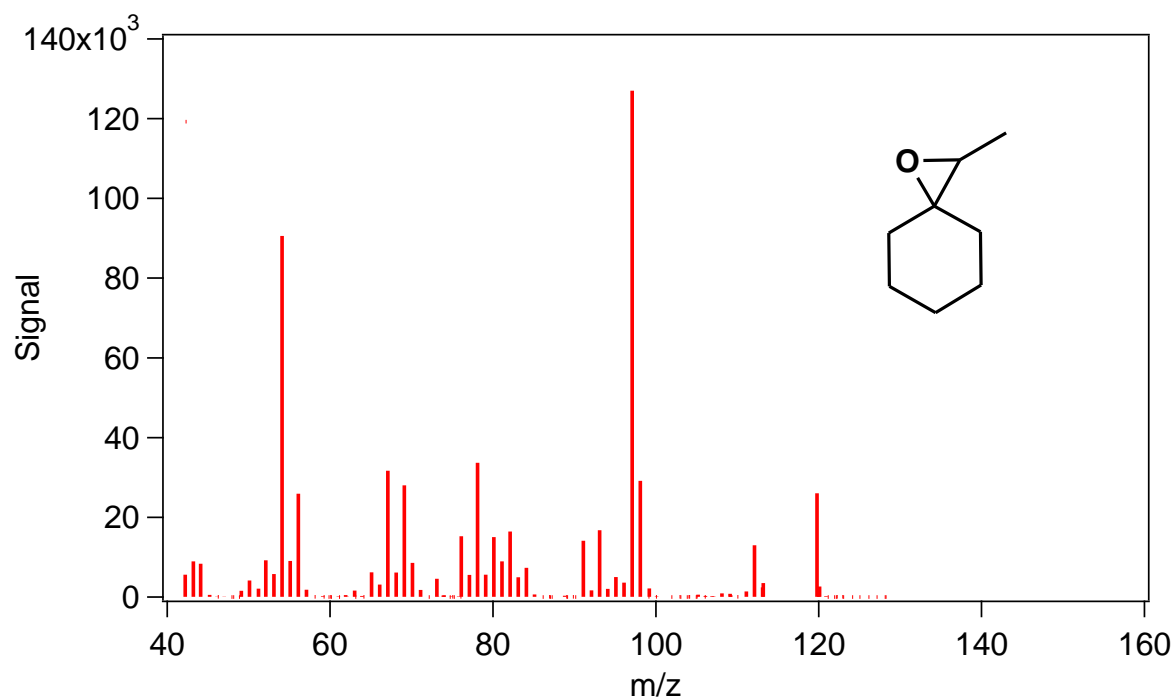


Figure S2: Mass spectrum of the species corresponding to the peak at the retention time of 32.8 min in the chromatogram of Figure 10.

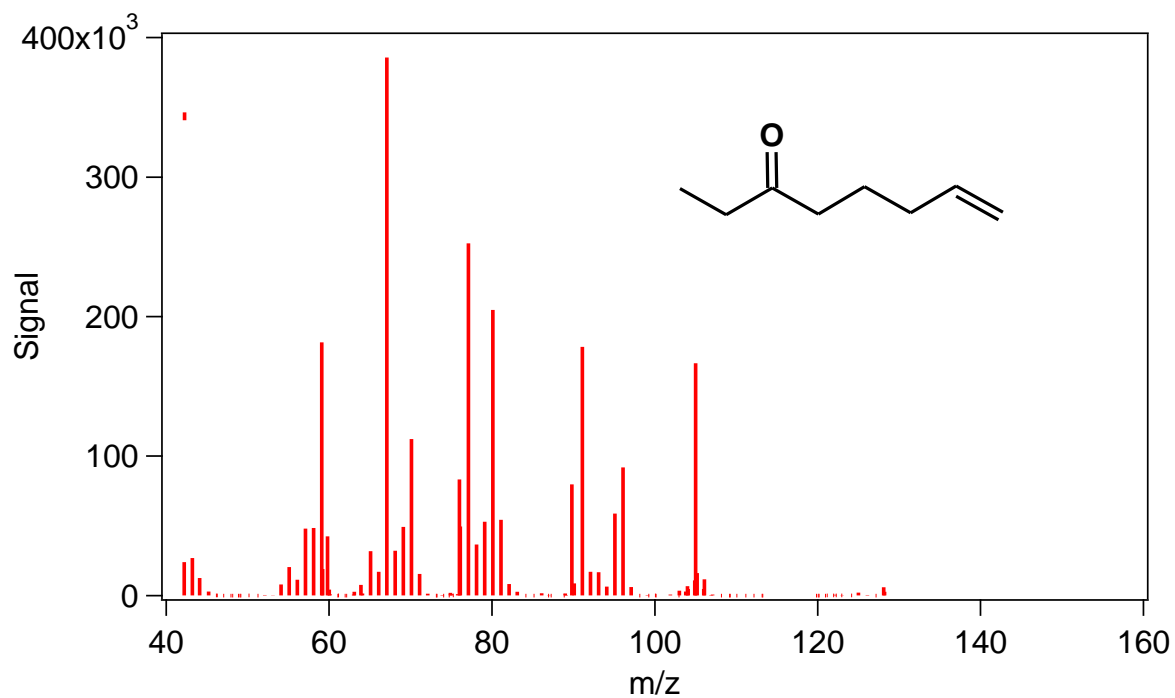


Figure S3: Mass spectrum of the species corresponding to the peak at the retention time of 33.5 min in the chromatogram of Figure 10.

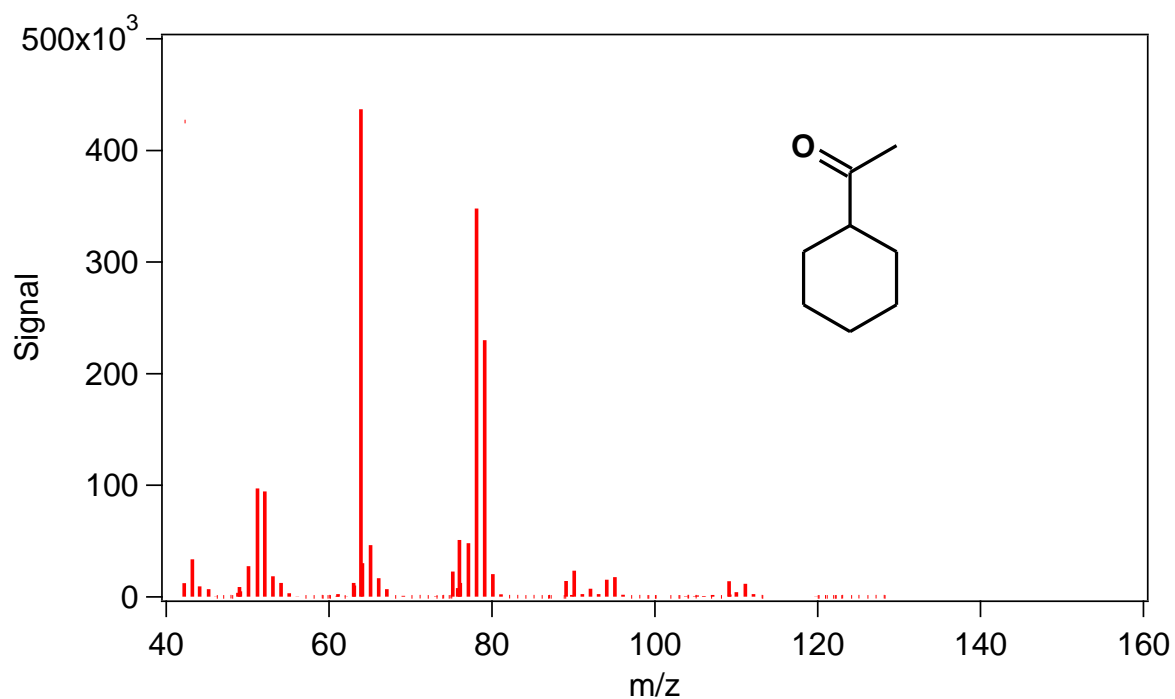


Figure S4: Mass spectrum of the species corresponding to the peak at the retention time of 35.0 min in the chromatogram of Figure 10.

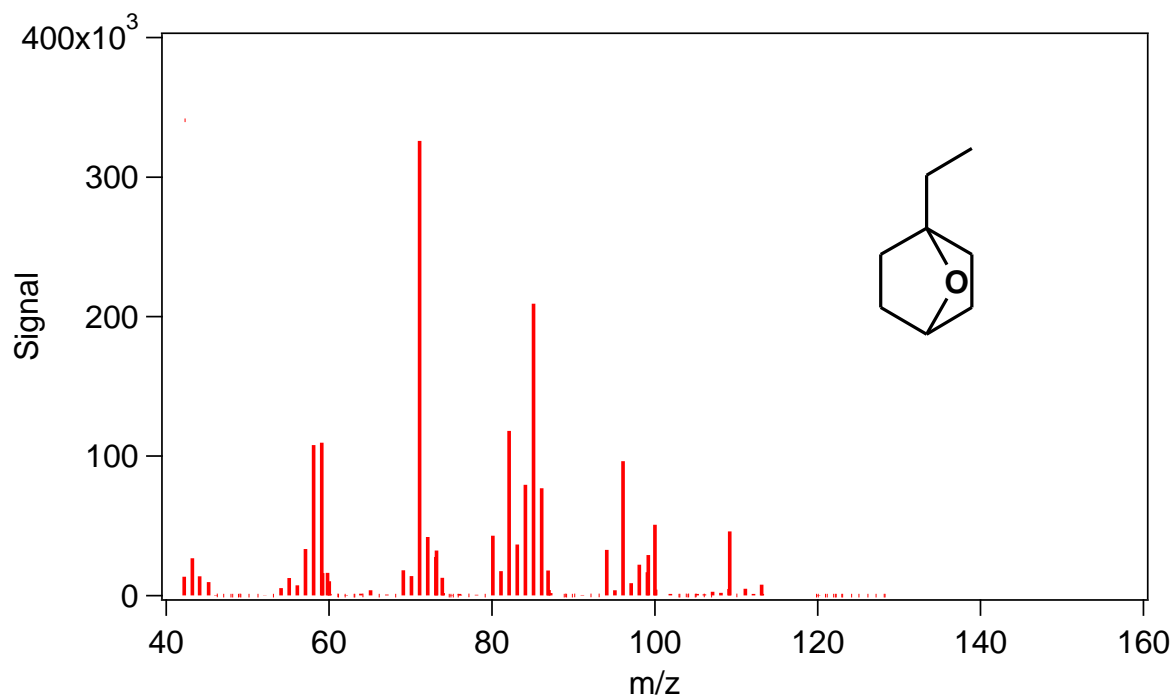


Figure S5: Mass spectrum of the species corresponding to the peak at the retention time of 35.4 min in the chromatogram of Figure 10.

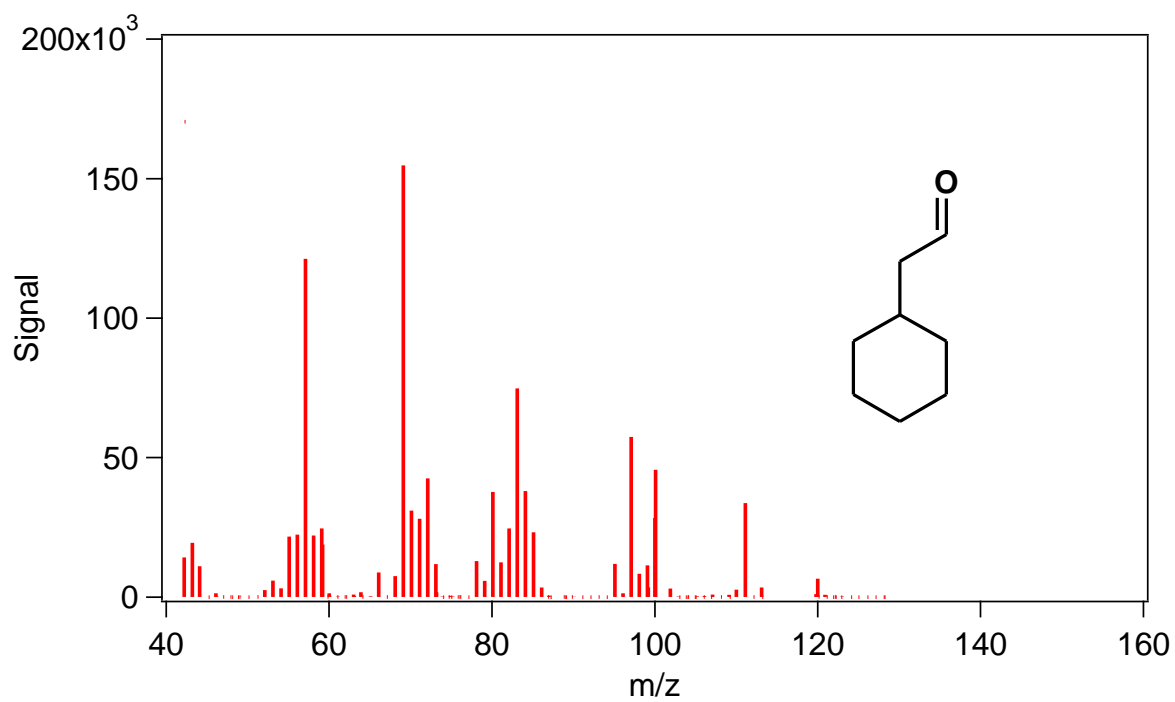


Figure S6: Mass spectrum of the species corresponding to the peak at the retention time of 36.0 min in the chromatogram of Figure 10.

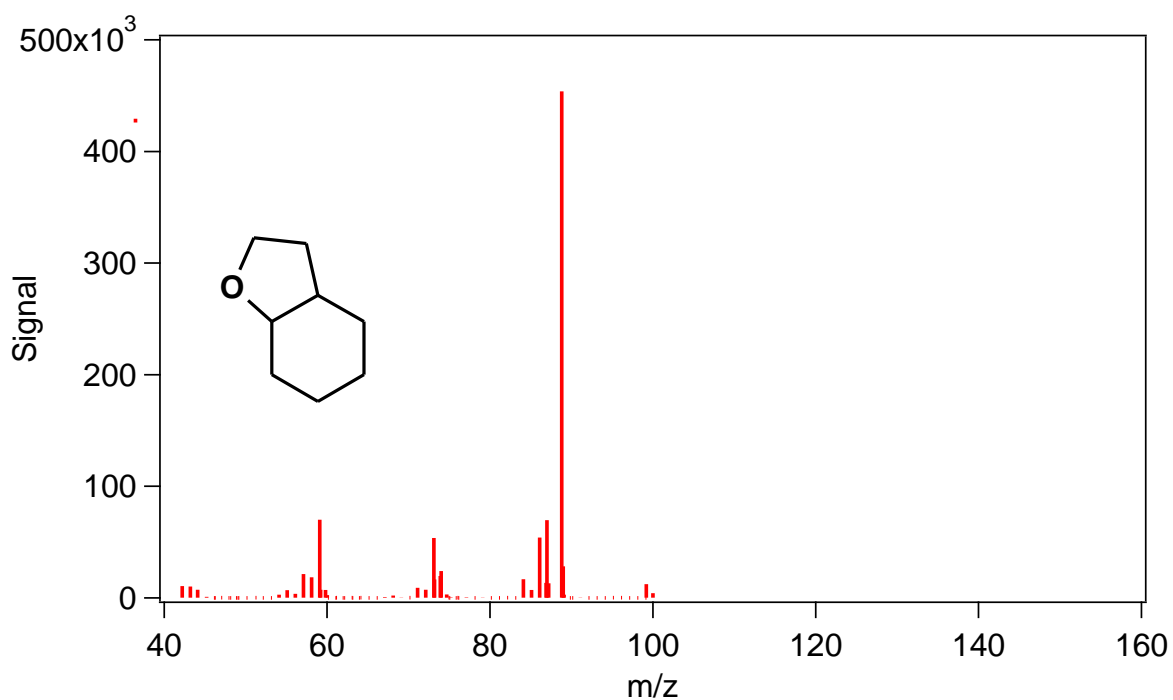


Figure S7: Mass spectrum of the species corresponding to the peak at the retention time of 36.2 min in the chromatogram of Figure 10.

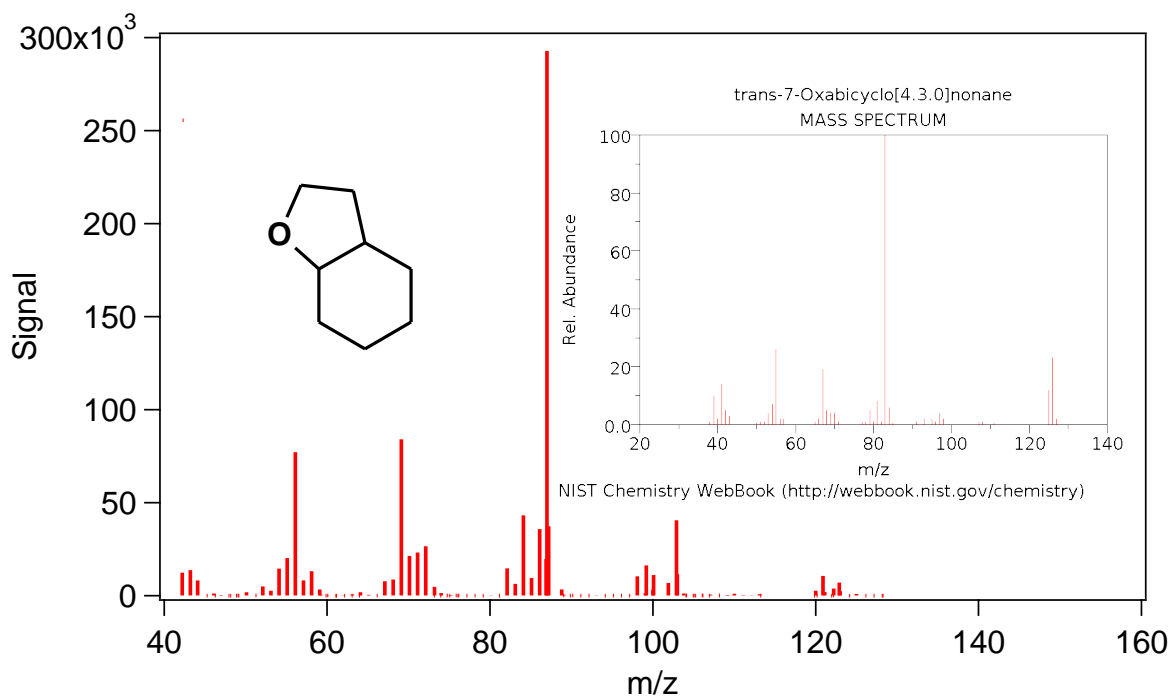


Figure S8: Mass spectrum of the species corresponding to the peak at the retention time of 37.2 min in the chromatogram of Figure 10. The spectrum proposed by the NIST Chemistry WebBook is given for comparison.

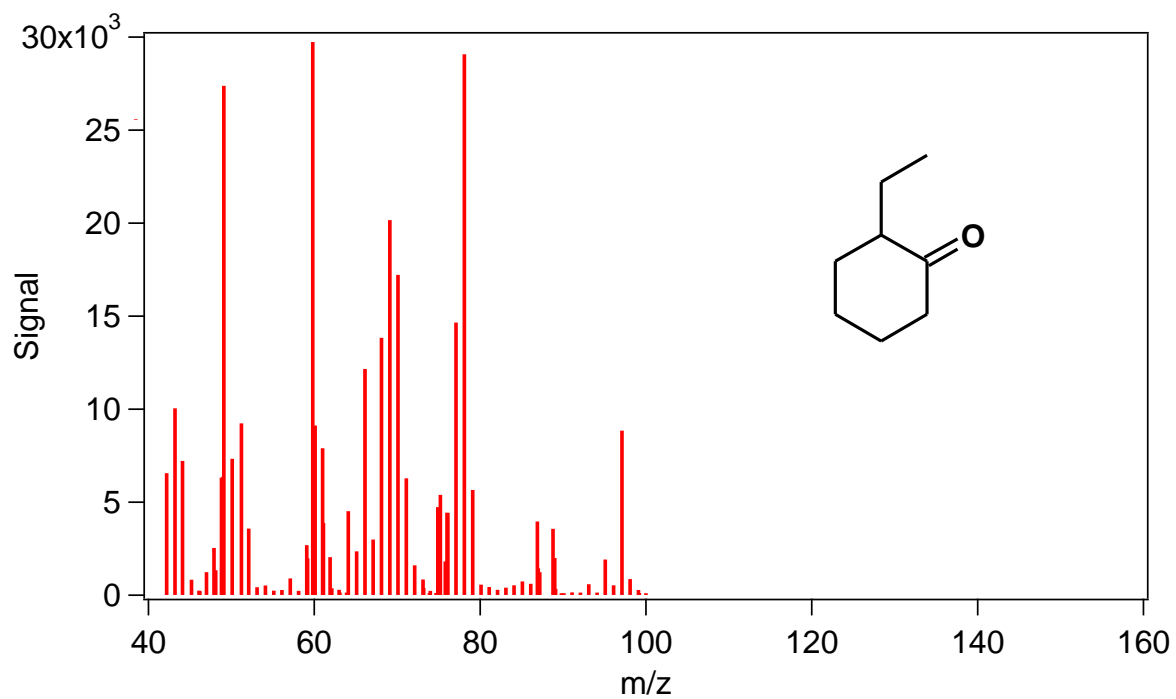


Figure S9: Mass spectrum of the species corresponding to the peak at the retention time of 38.0 min in the chromatogram of Figure 10.