



**HAL**  
open science

## Is corruption really bad for inequality? Evidence from Latin America

Carlyn Dobson, Antonio Andres

### ► To cite this version:

Carlyn Dobson, Antonio Andres. Is corruption really bad for inequality? Evidence from Latin America. The Journal of Development Studies, 2011, 47 (07), pp.959-976. <10.1080/00220388.2010.509784>. <hal-00720855>

**HAL Id: hal-00720855**

**<https://hal.science/hal-00720855v1>**

Submitted on 26 Jul 2012

**HAL** is a multi-disciplinary open access archive for the deposit and dissemination of scientific research documents, whether they are published or not. The documents may come from teaching and research institutions in France or abroad, or from public or private research centers.

L'archive ouverte pluridisciplinaire **HAL**, est destinée au dépôt et à la diffusion de documents scientifiques de niveau recherche, publiés ou non, émanant des établissements d'enseignement et de recherche français ou étrangers, des laboratoires publics ou privés.



HAL Authorization



**Is corruption really bad for inequality? Evidence from Latin America**

Journal:	<i>Journal of Development Studies</i>
Manuscript ID:	FJDS-2009-Jul-0027.R1
Manuscript Type:	Original Manuscripts
Keywords:	Corruption , Latin America , inequality, panel data



1  
2  
3  
4  
5  
6  
7  
8  
9  
10  
11  
12  
13  
14  
15  
16  
17  
18  
19  
20  
21  
22  
23  
24  
25  
26  
27  
28  
29  
30  
31  
32  
33  
34  
35  
36  
37  
38  
39  
40  
41  
42  
43  
44  
45  
46  
47  
48  
49  
50  
51  
52  
53  
54  
55  
56  
57  
58  
59  
60

## Is Corruption Really Bad for Inequality? Evidence from Latin America

*This paper presents new evidence on the relationship between corruption and income inequality. Using a panel data methodology, we find that lower corruption is associated with higher income inequality in Latin America. This result is in contrast to other empirical studies but it makes sense in Latin America for a number of reasons. The finding of an inverse relationship between inequality and corruption suggests that institutional reform policies by themselves may be misguided.*

## Is Corruption Really Bad for Inequality? Evidence from Latin America

### **1. Introduction**

Corruption and income inequality have been symbols of Latin America since colonial times. During the colonial period profitable activities were controlled by a privileged few and, to protect their interests, institutions were structured in such a manner that the majority of the population were denied access to land, education and political power (Engerman and Sokoloff, 2002; Acemoglu et al., 2002). Following independence the Creole elite gained control of key institutions and were able to wield significant influence on the formation and implementation of government policies.<sup>1</sup> In more recent times the emphasis has switched to greater government transparency and good governance, which can be seen in the second generation reforms.<sup>2</sup> Furthermore, surveys of public opinion highlight corruption as a major problem facing the region (Lagos, 2003) and for many it has become the common denominator explaining all of the region's woes, including inequality.

The aim of this study is to investigate the relationship between corruption and inequality in Latin America. This research is timely and important for two reasons. First, little is known empirically about the link between corruption and inequality in the region even though the two are perceived to be closely connected. Moreover, the nature of the inequality-corruption relationship has important policy implications. Second, the conventional view, based on empirical work in other parts of the world, suggests that corruption and inequality are positively related. However, Chong and Calderón (2000) find a non-monotonic relationship between corruption and inequality in a cross sectional study of many (rich and poor) countries. For the poorer countries in their sample lower corruption is associated with higher inequality. They suggest that the presence of a large informal sector in some countries may be the reason for this. Since the informal sector in many Latin American countries is relatively

1  
2  
3 large, and since there is a focus on institutional reform, the region is ideal for exploring  
4  
5 further the finding of Chong and Calderón.  
6  
7  
8  
9

10 The structure of the paper is as follows. Section 2 reviews the relevant literature. The  
11  
12 empirical model and data issues are discussed in Section 3. In Section 4 the empirical results  
13  
14 are presented and discussed. Section 5 reports some robustness tests and Section 6 concludes.  
15  
16  
17  
18  
19

## 20 **2. Literature Review**

21  
22 The empirical and theoretical literature on the link between corruption and income inequality,  
23  
24 when taken together, is inconclusive with regard to the relationship between inequality and  
25  
26 corruption. Much of the empirical literature reports a positive relationship – more corruption  
27  
28 is associated with higher inequality (e.g., Mauro, 1995, 1997; Gupta et al., 1998; Fisman and  
29  
30 Svensson, 2000; Gyimah-Brempong, 2002, Gyimah-Brempong and De Camancho, 2006).  
31  
32

33  
34 The argument made to support the empirical finding is as follows. Corruption, in the form of  
35  
36 tax evasions and exemptions, reduces funds for social programmes, including education and  
37  
38 health. Further, since the beneficiaries of tax evasion and exemptions are more likely to be the  
39  
40 relatively wealthy, the tax burden falls almost exclusively on the poor, making the effective  
41  
42 tax system regressive. The impact on social programmes can be direct as funds may be  
43  
44 siphoned out of poverty alleviation programmes in order to extend benefits to relatively  
45  
46 wealthy population groups. Even when social programmes are not reduced, corruption may  
47  
48 change the composition of social spending in a manner that benefits the rich at the expense of  
49  
50 the poor; for example, expenditure on tertiary rather primary education. In a corrupt system,  
51  
52 the allocation of public procurement contracts may lead to inferior public infrastructure,  
53  
54 which also has implications for welfare and inequality. In sum, corruption favours higher  
55  
56 income groups and so promotes greater inequality.  
57  
58  
59  
60

1  
2  
3  
4  
5  
6 In contrast to the above, Chong and Calderón (2000) find a quadratic relationship between  
7  
8 corruption and inequality for a cross section of rich and poor countries. For poor countries in  
9  
10 the sample they observe that a fall in corruption (measured by institutional quality) is  
11  
12 associated with a rise in income inequality. They explain the finding for poor countries in  
13  
14 relation to the informal sector. In many poor countries the informal sector is relatively large  
15  
16 and its members are among the poorest. It is the main source of income to the poor who  
17  
18 cannot find jobs in the formal sector because of their personal characteristics, institutional  
19  
20 barriers or labour market discrimination. Institutional reform and formalisation generate  
21  
22 additional costs on members of the informal sector via improvements in tax collection,  
23  
24 imposition of new taxes, new regulations, bureaucratic requirements and policing.<sup>3</sup> They add  
25  
26 that reform may also directly affect the mechanism by which the informal sector carries out  
27  
28 transactions. Hence, mechanisms that make the informal sector work are no longer useful and  
29  
30 new ones will have to be learned. Since the informal sector mostly employs those in the  
31  
32 lowest quintile of the income distribution, a rise in institutional quality is likely to be  
33  
34 translated into a fall in the absolute and relative income of this group.  
35  
36  
37  
38  
39  
40  
41  
42

43 Chong and Calderon also say that those poor countries with high inequality and high  
44  
45 corruption may become trapped in inequality regardless of the development of their  
46  
47 institutions. For poor countries close to the inflection point, however, institutional  
48  
49 development and formalisation may promote lower inequality. With formalisation business  
50  
51 will be able to take full advantage of government services, including skills-training  
52  
53 programmes and government sponsored activities. Firms will also be able to exercise all  
54  
55 property rights over their capital and product, and contracts can be enforced. Being formal  
56  
57 means that firms do not have to hide and operate on a scaled down capacity, instead they can  
58  
59  
60

1  
2  
3 increase production and enjoy economies of scale. Thus, if the main reason for going informal  
4  
5 is the lack of services (Dabla-Norris et al., 2005), formalisation will allow business to take  
6  
7 advantages of all such services which can lead to increased productivity and efficiency,  
8  
9 business expansion, job creation and declining levels of inequality.  
10  
11

12  
13  
14  
15 Some of the theoretical literature predicts a positive relationship between corruption (defined  
16  
17 in various ways) and inequality. Gleaser et al. (2003), for example, develop a model of  
18  
19 judicial corruption and show that weak institutions allow only those who are able to protect  
20  
21 themselves to become rich. Other researchers have shown that causation can run both ways:  
22  
23 inequality encourages the under-development of institutions, which in turn leads to more  
24  
25 inequality (e.g., Sonin, 2003; Chong and Gradstein, 2007). Bourguignon and Verdier (2000),  
26  
27 however, predict a non-monotonic relationship between democracy (a proxy for corruption)  
28  
29 and inequality. They develop a political economy growth model in which public decisions are  
30  
31 initially made only by the educated minority. The (educated) voting minority therefore runs  
32  
33 the country and initially inequality rises. In order to achieve higher growth, less educated  
34  
35 persons are schooled and the proportion of educated citizens rises. The political power of the  
36  
37 old elite thus becomes diluted as the decision making group grows and becomes more diverse.  
38  
39 Subsequently, redistribution policies will grow in number and inequality will fall.<sup>4</sup>  
40  
41  
42  
43  
44  
45  
46  
47

48  
49 The formal analysis of Alesina and Angeletos (2005) shows that in developing countries large  
50  
51 public projects aimed at reducing income inequality create more opportunities for corruption  
52  
53 (via things like tax loopholes and corruption in the allocation of public projects). Their model  
54  
55 indicates that the most well meaning of policy makers will not cut large public projects, even  
56  
57 though doing so would reduce the scope for corruption, because the cost of corruption is  
58  
59 worth paying, as it is often the only way to improve the condition of the poor. In other words,  
60

1  
2  
3 there may well be a trade-off between corruption and inequality. Blackburn and Forgues-  
4  
5 Puccio (2009) suggest that corruption may be less harmful in countries where corruption is  
6  
7 well organised. Their model shows that if bureaucrats are organised and act as a de facto joint  
8  
9 monopoly, negative externalities arising from non-coordinated, individual rent-seeking  
10  
11 behaviour are internalised. Individuals no longer engage in numerous separate bilateral bribe  
12  
13 negotiations with different government officials. Furthermore, the uncertainty associated with  
14  
15 bribery is reduced, as payments are transparent and predictable. Better organised corruption  
16  
17 can lead to a greater provision of government goods, which helps to improve the welfare of  
18  
19 the poorest. Mandal and Marjit (2010) consider the impact of corruption on wage inequality.  
20  
21 Their model assumes a small open economy with competitive markets where two goods are  
22  
23 produced using three factors of production. The model predicts that the impact on both  
24  
25 relative and absolute wages is ambiguous following a decline in the degree of corruption.  
26  
27  
28  
29  
30  
31  
32  
33

34 The above discussion indicates that the relationship between corruption and inequality is  
35  
36 inconclusive. Though numerous empirical studies have found that a fall in corruption reduces  
37  
38 income inequality, there is also evidence suggesting that the inequality-corruption relationship  
39  
40 is non-monotonic, with lower corruption being associated with higher inequality in poor  
41  
42 countries. Furthermore, some of the theoretical literature predicts an inverse relationship  
43  
44 between corruption and inequality. Many countries in Latin America have a large informal  
45  
46 sector and high levels of corruption and inequality. Institutional reform and formalisation will  
47  
48 likely weaken the informal sector with adverse consequences for its members who are among  
49  
50 the poorest. While formalisation may bring benefits over time that lead to lower inequality,  
51  
52 countries with initially high inequality and high corruption may become trapped in inequality.  
53  
54  
55  
56  
57  
58  
59  
60

### 3. Model Specification and Data

Econometric estimation is conducted using four-year panel data over the period 1982-2002 for 19 Latin American countries,<sup>5</sup> with each observation of the dependent variable being the relevant four year average value. There are some missing observations in the data so the panel is unbalanced. A priori, a fixed effects model is preferred to a random effects model since we expect the explanatory variables to be correlated with the unobserved individual effects. The specification of the general model is similar to that in previous empirical research (e.g., Barro, 2000; Lundberg and Squire, 2003):

$$\begin{aligned}
 Gini_{it} = & \alpha_0 + \eta_i + \gamma_1 corrupt_{it} + \gamma_2 lg dp_{it} + \gamma_3 lg dp_{it}^2 + \gamma_4 primary_{it} + \gamma_5 secondary_{it} \\
 & + \gamma_6 aggd_{it} + \gamma_7 m2gd_{it} (dcps) + \gamma_8 trade_{it} + \gamma_9 land_{it} + \gamma_{10} fdi_{it} + \gamma_{11} inflation_{it} \\
 & + \gamma_{12} natres_{it} + \gamma_{13} priv_{it} + interaction terms + e_{it}
 \end{aligned}
 \tag{1}$$

for  $(i = 1, \dots, n; t = 1, \dots, T)$

where  $\eta_i$  is the country-specific fixed effect,  $\gamma_s$  are coefficients to be estimated,  $e_{it}$  is the stochastic error term,  $i$  and  $t$  index countries and years respectively, and other variables are defined as follows. The dependent variable (*Gini*) is a standard measure of income inequality, the Gini coefficient. The data on inequality is drawn from the United Nations World Income Inequality Database (WIID) (UNU-WIDER, 2005).<sup>6</sup> We use the new quality label provided in Version 2a of the WIID, which combines and improves the quality ratings in Deininger and Squire (1996) with older versions of the WIID. Data classified as the lowest quality is excluded. Furthermore, only data which covers the entire population is used. Gini coefficients are based on income rather than consumption because of data constraints.<sup>7</sup> In a manner similar to others, we include dummy variables to control for the survey unit and the definition of income.<sup>8</sup> For each country, we have formed the longest possible series of observations.

1  
2  
3  
4  
5  
6 The corruption measure (*corrupt*) is the International Country Risk Guide (ICRG) corruption  
7  
8 index. It is intended to capture the likelihood that high level government officials will demand  
9  
10 special payments and the extent to which illegal payments are expected throughout lower  
11  
12 levels of government (Knack and Keefer, 1995).<sup>9</sup> The ICRG measure has the advantage of  
13  
14 having the broadest coverage for Latin American countries for the study period. It takes  
15  
16 values from zero (most corrupt) to six (least corrupt). The natural logarithm of real output per  
17  
18 capita (*lgdp*) and natural logarithm of real output per capita squared (*lgdp*<sup>2</sup>) are included in the  
19  
20 model to test the classical Kuznets hypothesis (Kuznets, 1955; Lewis, 1954). In line with  
21  
22 other studies (e.g., Bourguignon and Morrison, 1998; Li et al., 1998; Alderson and Nielsen,  
23  
24 1999; De Janvry and Sadoulet, 2000; Morley, 2000; Gupta et al., 2002; Reuveny and Li,  
25  
26 2003; Breen and García-Peñalosa, 2005; Albanesi, 2007) the model includes the following  
27  
28 variables: primary (*primary*) and secondary (*secondary*) gross school enrolment rates, the  
29  
30 share of agriculture in total output (*aggdp*), openness of the economy (*trade*), and financial  
31  
32 development (measured as the ratio of broad money to output (*m2gdp*) or domestic credit to  
33  
34 the private sector (*dcps*)). Other variables included are the distribution of land resources  
35  
36 (*land*), foreign direct investment (*fdi*), inflation (*inflation*), the concentration of natural  
37  
38 resources (*natres*), privatisation (*priv*) and interaction terms. Data for all these variables is  
39  
40 taken from the Penn World Table, Version 6.2<sup>10</sup> (Heston, Summers, and Aten, 2002), World  
41  
42 Bank's World Development Indicators (2003) and Frankema (2005).  
43  
44  
45  
46  
47  
48  
49  
50  
51  
52

53 In panel data models it is assumed that the errors are uncorrelated and homoskedastic. It is  
54  
55 possible that these assumptions will not hold because the sample has both cross sectional and  
56  
57 time-series elements. Therefore, tests for serial correlation and heteroskedasticity, as  
58  
59 discussed in Woolridge (2002), are undertaken. Depending on the diagnostics, the model is  
60

1  
2  
3 re-estimated allowing for autocorrelation and heteroskedasticity or both. Another important  
4  
5 issue in estimating equation (1) is the endogeneity of the control variables (in particular the  
6  
7 corruption variable). Incorporating time invariant fixed effects into the model addresses this  
8  
9 issue to some extent, but the inclusion of time varying factors means omitted variable bias is  
10  
11 still a potential problem. Furthermore, if there is correlation between at least one explanatory  
12  
13 variable and the error term, OLS estimates will suffer from simultaneity bias.<sup>11</sup> One way to  
14  
15 potentially deal with these problems is to do instrumental variable (IV) estimation.  
16  
17  
18  
19

20  
21  
22 In the literature on inequality, numerous instruments for corruption have been used. These  
23  
24 include a black market premium, financial development, government spending on defence as  
25  
26 a percentage of GDP, democracy, latitude of a country, ratio of government spending to GDP,  
27  
28 ethno-linguistic fractionalization, and mortality rate of colonial settlers. It is difficult to justify  
29  
30 instruments such as financial development and black market premium as they may have a  
31  
32 direct impact on inequality (e.g., Barro, 2000; Morley, 2001; Lundberg and Squire, 2003;  
33  
34 Gourdon et al., 2008), while spending on defense diverts resources away from education and  
35  
36 health. The mortality rate of colonial settlers and latitude are not appropriate for this study  
37  
38 since we use panel data rather than pure cross-sectional data. While ethnolinguistic  
39  
40 fractionalisation may be a valid instrument for corruption in a growth equation, it is  
41  
42 unsuitable in an inequality regression (Mauro, 1995).<sup>12</sup> The use of democracy as an  
43  
44 instrument is problematic since it is likely that a more equal distribution of political rights in  
45  
46 the form of democracy leads to a more equal income distribution (e.g. Gradstein et al., 2001;  
47  
48 Reuveny and Li, 2003). Perhaps the only reasonable instrument is the ratio of government  
49  
50 spending to GDP but this may be problematic as countries with the largest ratios tend to be  
51  
52 the least corrupt.<sup>13</sup> Given the weaknesses with potential instruments, we decided to reject IV  
53  
54 estimation in favour of a model with lagged explanatory variables.  
55  
56  
57  
58  
59  
60

1  
2  
3  
4  
5  
6 Table 1 shows the four-year average values for the Gini coefficient. Inequality increased  
7  
8 steadily over the period for the region as a whole. There is evidence of variation across  
9  
10 individual countries and variation over different time periods. For example, while countries  
11  
12 like Panama and Paraguay saw marked increases in the Gini coefficient over the period,  
13  
14 others like Costa Rica and Uruguay saw more modest rises. No country experienced a large  
15  
16 reduction in inequality over the period as a whole. Table 2 presents four year averages for the  
17  
18 corruption index. The average value of the index for Latin America as a whole has increased  
19  
20 over the study period (corruption levels have fallen), though there is some variation to this  
21  
22 pattern across countries. Figure 1 shows the relationship between the Gini coefficient and the  
23  
24 corruption index. Figure 1 shows the relationship between the Gini coefficient and the  
25  
26 corruption index.  
27  
28  
29  
30  
31

#### 32 **4. Empirical Results**

33  
34 The results from estimating (1) are reported in Table 3. Several different specifications are  
35  
36 shown in columns (1) to (4). For the OLS estimates, a Hausman test rejects the random effects  
37  
38 model in favour of the fixed effects model. Along with the fixed effects, the explanatory  
39  
40 variables account for more than 50 per cent of the variation in income inequality across  
41  
42 countries.  
43  
44  
45  
46  
47

48 The sign on the coefficient *corrupt* is positive in column (1). A positive coefficient is also  
49  
50 found in alternative model specifications as indicated in the other columns of Table 3.<sup>14</sup> This  
51  
52 result is particularly interesting as it indicates that lower corruption (a rise in the corruption  
53  
54 index) is associated with a rise in the Gini coefficient. In other words, there is a trade-off  
55  
56 between corruption and inequality. Though at odds with empirical results outside of Latin  
57  
58 America, this finding is consistent with the findings in some of the literature discussed in  
59  
60

1  
2  
3 Section 2. Moreover, the finding is not surprising given the potential impact of institutional  
4 reform in countries with a relatively large informal sector. The informal sector in many Latin  
5 American countries accounts for 25-30 per cent of aggregate output and provides employment  
6 for more than 50 per cent of the urban workforce.<sup>15</sup> Tokman (2007) notes that out of every  
7 100 jobs created since 1980, 60 have been informal ones.<sup>16</sup> Therefore, a move to  
8 formalisation will have a significant impact on employment and cause relatively large losses  
9 for low income groups. In Peru, for example, Tokman (2001) shows that formalisation could  
10 lead to a 50 per cent cut in profits for 75 per cent of enterprises. The adverse employment  
11 effect is compounded because informal workers are largely poor with little or no education or  
12 experience (Freije, 2002).  
13  
14  
15  
16  
17  
18  
19  
20  
21  
22  
23  
24  
25  
26  
27  
28

29 Turning to other results in Table 3, there is no support for the Kuznets hypothesis as the  
30 coefficients are statistically insignificant and have incorrect signs. This finding is in line with  
31 the findings of others, including Ravallion (1995), Deininger and Squire (1988), Odekunle  
32 and Round (2004), and Angeles (2007). Indeed, Fields and Jakubson (1994) show that the  
33 estimated curve can go from inverted U-shaped to U-shaped when allowing for fixed effects.  
34 The coefficients on *primary* reflect the widely accepted view that a rise in primary school  
35 education serves to reduce income inequality (e.g., Tinbergen, 1975; Sylwester, 2002; Chu,  
36 2000). The positive coefficient on *secondary* suggests that a higher level of secondary  
37 education worsens inequality. This finding may be a reflection of the fact that education  
38 above the primary school level remains largely a privilege. A natural solution is the  
39 introduction of an education strategy which achieves a significant leap in both participation  
40 rates and quality across the school system, and in particular at the secondary school level.  
41  
42  
43  
44  
45  
46  
47  
48  
49  
50  
51  
52  
53  
54  
55  
56  
57  
58  
59  
60

1  
2  
3 The coefficient on financial development defined as either the domestic credit to the private  
4 sector or the ratio of broad money to GDP is statistically significant and positive, which  
5  
6 means that as the financial sector develops inequality rises. Similar results were found by  
7  
8 Morley (2000), who noted that while the positive sign does not concur with the theory, it  
9  
10 supports the assertion that inequality in the region widened after the implementation of  
11  
12 reforms (Berry, 1998; Bulmer-Thomas, 1996). Openness, defined as the trade ratio<sup>17</sup>, also  
13  
14 exacerbates inequality. Similar results have been reported by several researchers and there are  
15  
16 many channels through which the impact occurs (Goldberg and Pavcnik, 2004). In line with  
17  
18 the findings of Odekokun and Round (2004) and Angeles (2007), our results suggest that the  
19  
20 concentration of land exacerbates the income inequality problem in the region.  
21  
22  
23  
24  
25  
26  
27  
28

29 Although the agriculture variable has the expected sign, it is not significant. Neither inflation  
30  
31 nor resource abundance (defined as the share of ores and mineral as a percent of merchandise  
32  
33 exports) is significant. Foreign direct investment is marginally significant and privatisation  
34  
35 (cumulative value of the sales and transfers of companies as a proportion of GDP) is only  
36  
37 significant when included with an interaction term. Two of the interaction terms  
38  
39 (corruption\*trade and corruption\*privatisation in columns 3 and 4, respectively) are  
40  
41 significant and have opposite signs to the corruption variable. This may suggest that more  
42  
43 liberal policies reduce the impact of corruption on inequality (see Section 5 below).<sup>18</sup>  
44  
45  
46  
47  
48  
49

## 50 **5. Robustness Tests**

51  
52 As an alternative to the Gini coefficient, we use the share of income in the lowest quintile as  
53  
54 the dependent variable (*Quintile1*). Table 4 shows that a rise in the corruption index decreases  
55  
56 the share of income in the lowest quintile. In other words, as corruption falls inequality  
57  
58 worsens. This result is consistent with the finding in Table 3. A similar result is obtained  
59  
60

1  
2  
3 using alternative specifications (columns (2)-(4) of Table 4). Table 4 also shows that there are  
4  
5 some differences with respect to other explanatory variables in the model. Foreign direct  
6  
7 investment, natural resource endowment and privatisation have a negative impact on the share  
8  
9 of income in the lowest quintile. When the latter variables are included the trade ratio and  
10  
11 secondary schooling becomes insignificant (column (2)) and their performance improves once  
12  
13 these variables are omitted (column (3)). The agriculture variable is significant and positive  
14  
15 meaning that as the share of agriculture in GDP increases, the share of income to the lowest  
16  
17 quintile rises (inequality falls). In contrast to the results in Table 3, none of the interaction  
18  
19 terms are significant.  
20  
21  
22  
23  
24  
25  
26

27 Table 5 shows the results of the model with lagged explanatory variables.<sup>19</sup> The results for the  
28  
29 corruption variable are consistent with those above (positive sign in the case of the Gini  
30  
31 coefficient and a negative sign in the case of Quintile 1). The agriculture variable (column 2)  
32  
33 is marginally significant and negative (a rise in the share of agriculture lowers inequality)  
34  
35 which is consistent with the result obtained when the dependent variable is Quintile 1. Results  
36  
37 for the interactions terms are not reported as they are statistically insignificant. Table 6 reports  
38  
39 results using an adjusted version of the Gini coefficient. As the Gini coefficient is bounded  
40  
41 between 0 and 100, OLS may be problematic since it assumes that the dependent variable is  
42  
43 unbounded. In order to overcome this potential problem, the dependent variable is  
44  
45 transformed using the formula  $\log [Gini/(100-Gini)]$  to become unbounded. Table 6 reveals  
46  
47 no marked difference in the results.  
48  
49  
50  
51  
52  
53  
54

55 An alternative measure of corruption is the corruption perception index (CPI). The CPI  
56  
57 measures the perceived level of public-sector corruption, with a higher score indicating lower  
58  
59 corruption. We are unable to use this measure for the entire sample period because it is only  
60

1  
2  
3 available from 1995 and it is not until 1998 that it is available for the majority of countries in  
4  
5 the region. We include the CPI in a fixed effects equation using *annual observations* for all  
6  
7 variables (where data is available) over the period 1995-2003. The relevant dependent  
8  
9 variable is the Gini coefficient and the results are presented in Table 7. The corruption  
10  
11 variable (*cpi*) has the correct (positive) sign (as corruption falls, inequality rises) and it is  
12  
13 bordering on being significant at the 10 per cent level.  
14  
15  
16  
17  
18  
19

## 20 **6. Conclusion**

21  
22 This paper examines the income inequality-corruption relationship in Latin America. The  
23  
24 results show that corruption and inequality are inversely related: corruption contributes to  
25  
26 reducing inequality and may be perceived as a means of pro poor redistribution. The finding  
27  
28 of an inverse relationship between corruption and inequality, while at odds with results from  
29  
30 other empirical studies, makes sense in Latin America for a number of reasons. First, there is  
31  
32 a large informal sector in many Latin American countries. The informal sector provides jobs  
33  
34 and a source of income for people who are among the poorest in society. Many of these  
35  
36 people lack the personal characteristics required to find work in the formal economy, while  
37  
38 discrimination and institutional barriers also inhibit work opportunities. As corruption is  
39  
40 reduced business becomes more formal: operational costs rise, profits are reduced and jobs  
41  
42 are lost. Second, corruption may be seen as a price worth paying for lower inequality. The  
43  
44 provision of certain government projects, while fostering corruption, serves to improve the  
45  
46 welfare of the very poor. Well-intentioned policy makers are hesitant to reduce or eliminate  
47  
48 corrupt programmes because this is often the only way to improve the condition of the poor.  
49  
50 A third reason, and one which merits additional research, is the possibility that as corruption  
51  
52 becomes more organised the provision of some government goods may improve, thus  
53  
54 contributing to improving the well being of the poor.  
55  
56  
57  
58  
59  
60

1  
2  
3  
4  
5  
6 The implication for policy of our key finding is that countries plagued by inequality may  
7  
8 benefit from allowing corruption to grow. However, this seems a risky interpretation. If  
9  
10 corruption is allowed to grow, countries may end up later on with an even weaker institutional  
11  
12 framework, and so end up in a bad governance/low productivity trap. Furthermore, a  
13  
14 significant proportion of the Latin American labour market is unregulated with many workers  
15  
16 (adults and children<sup>20</sup>) facing exploitation and dangerous working conditions. Low  
17  
18 productivity and the absence of social protection characterise the informal sector and letting  
19  
20 corruption grow would exacerbate this situation.  
21  
22  
23  
24  
25

26  
27 A safer way of tackling inequality in Latin America is to encourage countries to fight  
28  
29 corruption and at the same time adopt policies that directly promote the productivity of the  
30  
31 poorest groups. In this way, if anti-corruption measures were to make inequality worse the  
32  
33 harm could be offset by improvements in the human capital development of those in the  
34  
35 lowest income quintile. Institutional reform programmes combined with action that helps the  
36  
37 poor acquire skills and maintain good health seems a better way forward.  
38  
39  
40  
41  
42  
43  
44  
45  
46  
47  
48  
49  
50  
51  
52  
53  
54  
55  
56  
57  
58  
59  
60

## References

- 1  
2  
3  
4  
5  
6  
7 Acemoglu, D., and Robinson, J. (2000). "Why the West Extended the Franchise? Democracy,  
8 inequality, and growth in historical perspective." *Quarterly Journal of Economics* 115, 1167-  
9 1199.  
10  
11  
12  
13 Acemoglu, D., Johnson, S., and Robinson, J.A. (2002). "Reversal of fortune: geography and  
14 institutions in the making of modern world income distribution." *Quarterly Journal of*  
15 *Economics* 117, 4, 1231-1294.  
16  
17  
18  
19  
20 Albanesi, S. (2007). "Inflation and inequality." *Journal of Monetary Economics* 54, 4, 1088-  
21 1114.  
22  
23  
24  
25 Alderson, AS., and Nielsen, F. (1999). "Income inequality, development, and dependence: A  
26 reconsideration." *American Sociological Review* 64, 4, 606-631.  
27  
28  
29  
30 Alesina, A., and Angeletos, G.M. (2005). "Corruption, inequality and fairness." *Journal of*  
31 *Monetary Economics* 52, 7, 1227-1244.  
32  
33  
34 Angeles, L. (2007). "Income inequality and colonialism." *European Economic Review*, 51  
35 1155–1176.  
36  
37  
38  
39 Barro, R.J. (2000). "Inequality and growth in a panel of countries." *Journal of Economic*  
40 *Growth*, 5, 1, 5-32.  
41  
42  
43  
44 Berry, A. (1998). *Poverty, economic reform and income distribution in Latin America*.  
45 London: Lynne Rienner Publishers Inc.  
46  
47  
48  
49 Blackburn, K., and GF Forgues-Puccio, G. (2009). Why is corruption less harmful in some  
50 countries than in others? *Journal of Economic Behavior and Organization* 72, 3, 797-810.  
51  
52  
53  
54 Bourguignon, F., and Morrison, C. (1998). "Inequality and development: the role of dualism."  
55 *Journal of Development Economics* 57, 2, 233-257.  
56  
57  
58  
59 Bourguignon, F., and Morrison, C. (2002). "Inequality among world citizens: 1820-1992."  
60 *American Economic Review* 92, 4, 727-744.

- 1  
2  
3 Bourguignon, F., and Verdier, T. (2000). "Oligarchy, democracy, inequality, and growth."  
4  
5 *Journal of Development Economics* 62, 2, 285-313.  
6  
7  
8 Breen, R., and García-Peñalosa, C. (2005). "Income inequality and macroeconomic volatility:  
9  
10 an empirical investigation." *Review of Development Economics* 9, 3, 380-398.  
11  
12  
13 Bulmer-Thomas, V. (1996). "Introduction." in V. Bulmer-Thomas (ed.) *The new Economic*  
14  
15 *Model in Latin America and its Impact on Income Distribution and Poverty*, pp. 7–26. New  
16  
17 York: St Martin's Press.  
18  
19  
20 Chong, A. (2004). "Inequality, democracy and persistence: Is there a political Kuznets curve."  
21  
22 *Economics and Politics* 16, 2, 189-212.  
23  
24  
25 Chong, A., and Calderón, C.A. (2000). "Institutional quality and income distribution."  
26  
27 *Economic Development and Cultural Change* 48, 4, 761-786.  
28  
29  
30 Chong, A and Gradstein, M., (2007). "Inequality and Institutions." *Review of economics and*  
31  
32 *Statistics*, 89, 454-65.  
33  
34  
35 Chu, H.J. (2000). "The impacts of educational expansion and schooling on income  
36  
37 distribution." *Quarterly Journal of Business and Economics* 39, 39-49.  
38  
39  
40 Clague, C., ed., (1997). *Institutions and economic development: Growth and governance in*  
41  
42 *less developed and post-socialist countries*. Johns Hopkins University Press, Baltimore, MD.  
43  
44  
45 Dabla-Norris, E., Gradstein, M., and Inchauste, G. (2005) What causes firms to hide output?  
46  
47 The determinants of informality. *International Monetary Fund Working Paper*, WP/05/160.  
48  
49  
50 De Janvry, A., and Sadoulet, E. (2000). "Growth, poverty and inequality in Latin America: a  
51  
52 causal analysis." *Review of Income and Wealth* 46, 3, 267-87.  
53  
54  
55 Deininger, K., and Squire, L. (1996). "A new dataset measuring income inequality." *World*  
56  
57 *Bank Economic Review* 10, 3, 565-591.  
58  
59  
60 Deininger, K., and Squire, L. (1998). "New ways of looking at old issues: inequality and  
growth." *Journal of Development Economics* 57, 2, 259-287.

- 1  
2  
3 Engerman, S.L., and Sokoloff, K.L. (2002). "Factor endowments, inequality and paths of  
4 development among new world economies." National Bureau of Economic Research  
5 Working Papers *Working Paper* 9259.  
6  
7  
8  
9  
10 Fields, G.S., and Jakubson, G. H. (1994). "New evidence on the Kuznets curve." Mimeo.  
11 Department of Economics, Cornell University.  
12  
13  
14  
15 Fisman, R., and Gatti, R. (2002). "Decentralization and corruption: evidence across  
16 countries." *Journal of Public Economics* 83, 3, 325-345.  
17  
18  
19  
20 Frankema, E. (2005). "The colonial origins of inequality: a global investigation of land  
21 distribution." Presented at a symposium on poverty, inequality in Latin America, *Ibero-*  
22 *American Institute for Economic Research*.  
23  
24  
25  
26  
27 Freije, S. (2002). Employment in Latin America and Caribbean: Causes, Consequences and  
28 Policy Recommendations." Paper presented at Regional Consultation on Labor Issues,  
29 Panama City, 26-27 November 2001.  
30  
31  
32  
33  
34 Glaeser, E., Scheinkman, J. and Shleifer, A. (2003): The Injustice and Inequality, *Journal of*  
35 *Monetary Economics*, Vol.50, 199-222  
36  
37  
38  
39 Goldberg, P., and N Pavcnik (2004) "Distributional effects of globalisation in developing  
40 countries." *National Bureau of Economic Research Working Papers* No. 12885  
41  
42  
43  
44 Gourdon, J., Maystre, N., and De Melo, J. (2008). "Openness, inequality and poverty:  
45 Endowments matter." *Journal of International Trade and Economic Development* 17, 3,  
46 343-378.  
47  
48  
49  
50  
51 Gradstein, M., Milanovic, B., Ying, Y. (2001). "Democracy and income inequality: An  
52 empirical analysis." *World Bank Policy Research Working Paper*, WP2561.  
53  
54  
55  
56 Gupta, S., Davoodi, H., and Alonso-Terme, R. (2002). "Does corruption affect income  
57 inequality and poverty?" *Economics of Governance* 3, 1, 23-45.  
58  
59  
60

- 1  
2  
3 Gyimah-Brempong, K. (2002). "Corruption, economic growth and income inequality in  
4  
5 Africa." *Economics of Governance* 3, 3,183-209.  
6  
7  
8 Gyimah-Brempong, K., and Muñoz de Camacho, S. (2006). "Corruption, growth, and income  
9  
10 distribution: are there regional differences?" *Economics of Governance* 7, 3, 245-269.  
11  
12 Heston, A., Summers, R. and Aten, B. (2002). Penn World Table 6.1. Center for International  
13  
14 Comparisons at the University of Pennsylvania, October.  
15  
16  
17 Jong-Sung, Y., and Khagram, S. (2005). "A comparative study of inequality and corruption."  
18  
19 *American Sociological Review* 70, 1, 136-157.  
20  
21  
22 Knack, S., and Keefer, P. (1995). "Institutions and economic performance: Cross-country  
23  
24 tests using alternative institutional measures." *Economics and Politics* 7(3):207-227  
25  
26  
27 Kuznets, S. (1955). "Economic growth and income inequality." *American Economic Review*  
28  
29 45, 1, 1-28.  
30  
31  
32 Lagos, M. (2003). "Public opinion of corruption in Latin America" in Global Corruption  
33  
34 Report, Transparency International 2003, 282-284.  
35  
36  
37 Lambsdorff, J. (2006), "The validity and precision of subjective indicators (CPI)." in  
38  
39 Sampford, C., Shacklock, A., Connors, C., Galtung, F. (Eds), *Measuring Corruption*,  
40  
41 Ashgate, Aldershot, pp.81-99.  
42  
43  
44 Lewis, W.A (1954). "Economic development with unlimited supplies of labour." *Manchester*  
45  
46 *School* 22, 139-191.  
47  
48  
49 Li, H., Squire, L., and Zou, H.F. (1998). "Explaining international and intertemporal  
50  
51 variations in income inequality." *Economic Journal* 108, 1, 26-43.  
52  
53  
54 Li, H., Xu, L.C., and Zou, H.F. (2000). "Corruption, income distribution, and growth."  
55  
56 *Economics and Politics* 12, 2, 155-181.  
57  
58  
59 Lopez, J.H., and Perry, G. (2008) "Inequality in Latin America: determinants and  
60  
consequences." *World Bank Policy Research Working Paper*, # 4504.

- 1  
2  
3 Lundberg, M., and Squire L. (2003) "The simultaneous evolution of growth and equality."  
4  
5 *Economic Journal*, 113, 326–344.  
6  
7  
8 Maloney, W (2004) "Informality revisited", *World Development*, 32 (7), pp 1159-78.  
9  
10 Mandal, B and Marjit, S. (2010) "Corruption and wage inequality," *International Review of*  
11  
12 *Economics and Finance*, 19, 166-172.  
13  
14  
15 Mauro, P. (1995). "Corruption and growth." *Quarterly Journal of Economics*, 110, 3, 681-  
16  
17 712.  
18  
19  
20 Mauro, P. (1998): Corruption and the Composition of Government Expenditure, *Journal of*  
21  
22 *Public Economics*, Vol. 69, pp. 263-279  
23  
24  
25 Meon, P and Weill, L (2009) "is corruption an efficient grease," *World Development* ,  
26  
27 forthcoming.  
28  
29  
30 Morley, S. (2000). "The effects of growth and economic reform on income distribution in  
31  
32 Latin America." *CEPAL Review* 71, August, 23-40.  
33  
34  
35 Morley, S. (2001). *The Income Distribution Problem in Latin America and the Caribbean*.  
36  
37 Santiago: United Nations Press.  
38  
39  
40 Murphy, K.M., Shleifer, A., and Vishny, R.W. (1991). "The allocation of talent: implications  
41  
42 for growth." *Quarterly Journal of Economics*, 106, 2, 503–530.  
43  
44  
45 Odekokun, M.O., and Round, J.I. (2004). "Determinants of income inequality and its effects  
46  
47 on economic growth: evidence from African countries." *African Development Review* 16, 2,  
48  
49 287-327.  
50  
51  
52 Perry, G., and Olarreaga, M. (2006). "Trade liberalisation, inequality and poverty reduction in  
53  
54 Latin America." Mimeo, World Bank.  
55  
56  
57 Ravallion, M. (1995). "Growth and poverty: evidence for developing countries in the 1980s."  
58  
59 *Economics Letters* 48, 3-4, 411-417.  
60  
61  
62 Reuveny, R., and Li, Q. (2003). "Economic openness, democracy and income inequality an  
63  
64 empirical analysis." *Comparative Political Studies* 36, 5, 575-601.

- 1  
2  
3 Sonin, K. (2003): Why the Rich May Favor Poor Protection of property Rights, *Journal of*  
4  
5 *Comparative Economics*, Vol. 31, pp. 715-732  
6  
7  
8 Sylwester, K. (2002). "Can education expenditures reduce income inequality?" *Economics of*  
9  
10 *Education Review* 21, 1, 43-52.  
11  
12 Tinbergen, J. (1975). *Income Distribution*. North-Holland, Amsterdam.  
13  
14 Tokman, V.E. (2001). Integrating the informal sector into the modernization process. *SAIS*  
15  
16 *Review* 21 (1): 45-60.  
17  
18 Tokman, V.E. (2007). "Modernizing the informal sector," *DESA Working paper No. 42*.  
19  
20 United Nations. (2005). World Income Inequality Database, Version 2.a, WIDER, Helsinki,  
21  
22 Finland; <http://www.wider.unu.edu/wiid/wiid.htm>.  
23  
24  
25  
26 Uslander, E.M. (2006). Corruption and inequality. World Institute for Development  
27  
28 Economic Research (WIDER) Research Paper No. 2006/34.  
29  
30  
31 Woolridge, J. (2002). *Econometric Analysis of Cross-Section and Panel Data*. MIT Press.  
32  
33 World Bank (2001). <http://www.worldbank.org/publicsector/anticorrupt/index.ctm>  
34  
35  
36 World Bank (2003). World Development Indicators CD-ROM. The World Bank,  
37  
38 Washington, D.C.  
39  
40  
41  
42  
43  
44  
45  
46  
47  
48  
49  
50  
51  
52  
53  
54  
55  
56  
57  
58  
59  
60

**Table 1: Inequality in Latin America (average Gini coefficient)**

Country	1982-85	1986-89	1990-93	1994-97	1998-2002
Argentina	40.98	41.55	45.60	45.83	47.90
Bolivia		51.50	53.50	51.41	60.10
Brazil	57.23	58.75	61.83	59.03	60.30
Chile	54.53	55.11	55.65	53.00	56.50
Columbia	55.75		55.05	58.29	57.40
Costa Rica	46.90		48.13	48.15	48.68
Dominican Republic		45.20	51.50	51.60	48.90
Ecuador		44.40		56.07	56.97
Guatemala		56.00	55.30		54.90
Honduras		54.80	55.33	55.05	53.90
Jamaica			54.45	59.40	56.75
Mexico		50.60	53.10	54.55	54.90
Nicaragua				53.90	54.30
Panama	47.60		57.75	56.80	57.20
Peru			50.90	54.70	50.12
Paraguay	45.10		39.80	55.85	55.40
El Salvador			47.10	50.15	53.60
Uruguay	42.10	40.13	41.14	43.17	43.79
Venezuela	45.40	46.23	44.29	44.01	47.91
Latin America (19)	48.40	49.48	51.20	52.83	53.66

Source: UNU-WIDER (2005)

**Table 2: Corruption in Latin America**

Country	1982-85	1986-89	1990-93	1994-97	1998-2002
Argentina	4	4	3.75	2.75	2.63
Bolivia	1	1.5	2	2.5	3
Brazil	4	4	4	3.0	2.73
Chile	3	3	3	3	4
Colombia	3	3	3	3	1.75
Costa Rica	5	5	5	5	4.5
Dominican Republic	3	3	3	3.5	4
Ecuador	3	3	3	3	3.25
Guatemala	2	2	2	2	4
Honduras	2	2	2	2	1.88
Jamaica	2	2	2	2.75	3
Mexico	3	3	3	3	2.5
Nicaragua	3	5	5	4.75	4
Panama	2	2	2	2	2
Peru	2	3	3	3	3
Paraguay	1	0.25	1.5	2.25	2
El Salvador	2	2	2.25	3	3.75
Uruguay	3	3	3	3	3
Venezuela	3	3	3	3	3
Latin America (19)	2.74	2.83	2.93	3.01	3.09

Source: International Country Risk Guide (ICRG); Published by the PRS Group (2003)  
 Corruption index is from 0 (high) to 6 (low)

**Table 3: Estimation results (Gini coefficient)**

Dependent variable: Gini coefficient	1	2	3	4
lgdp	-100.812 [0.254]	-39.460 [0.581]	-97.718 [0.157]	-5.094 [0.148]
lgdp <sup>2</sup>	5.419 [0.283]	1.853 [0.639]	5.377 [0.165]	
primary	-0.114** [0.040]	-0.137** [0.051]	-0.133* [0.065]	-0.133** [0.048]
secondary	0.123** [0.024]	0.087* [0.091]	0.081* [0.092]	0.099* [0.074]
aggdp		-0.111 [0.415]		
m2gdp		0.195** [0.030]	0.136* [0.0461]	
dcps	0.086** [0.027]			0.091** [0.044]
trade	0.166*** [0.000]	0.123** [0.024]	0.224*** [0.000]	0.167*** [0.003]
inflation		0.000 [0.603]		
natres		0.262 [0.235]	0.118 [0.372]	
land	36.049** [0.035]	31.655 [0.223]		31.361* [0.077]
corrupt	1.566** [0.024]	1.424** [0.026]	2.530** [0.051]	1.831*** [0.007]
corrupt*trade			-0.026* [0.093]	
trade*natres		-0.0043 (0.284)		
corrupt*priv				-0.216* [0.057]
fdi		0.152 [0.109]		
priv		0.180 [0.222]		0.705* [0.090]
Constant	479.160 [0.214]	246.166 [0.443]	465.830 [0.110]	53.807 [0.1794]
F- test (p-value)	23.366 [0.000]	24.103 [0.000]	23.3657 [0.000]	21.895 [0.000]
Hausman test (p-value)	15.803 (0.045)	24.167 (0.044)	24.198 (0.0040)	16.901 [0.034]
Adjusted R <sup>2</sup>	0.527	0.549	0.514	0.539
Number of observations	70	73	70	66

P values are in square brackets.

\* significant at 10%; \*\* significant at 5%; \*\*\* significant at 1%

Fixed effects not reported

**Table 4: Estimation results (Quintile 1)**

Dependent variable: share of the income in the lowest quintile	1	2	3	4
lgdp	24.653 [0.279]	17.450 [0.314]	0.414 [0.599]	16.349 [0.357]
lgdp <sup>2</sup>	-1.343 [0.400]	-0.948 [0.337]		-0.900 [0.382]
primary	0.054*** [0.001]	0.019** [0.031]	0.022*** [0.009]	0.039** [0.036]
secondary	-0.054*** [0.001]	-0.012 [0.493]		-0.040** [0.033]
aggdp		0.116** [0.051]		
m2gdp		-0.024* [0.057]	-0.020* [0.072]	
dcps	-0.019*** [0.000]			-0.021*** [0.003]
trade	-0.022** [0.037]	0.045 [0.556]		-0.009 [0.433]
inflation		-0.000 [0.614]		
natres	-0.051** [0.051]	-0.061 [0.128]	-0.102** [0.025]	
land		-10.636*** [0.001]		-15.721*** [0.009]
corrupt	-0.514** [0.031]	-0.555** [0.051]	-0.595** [0.048]	-0.781** [0.011]
corrupt*trade			-0.005 [0.166]	
trade*natres		0.001 [0.500]		
corrupt*priv				0.016 [0.158]
fdi		-0.027 [0.179]	-0.035* [0.095]	
priv		-0.048 [0.217]	-0.0733** [0.024]	-0.321** [0.019]
Constant	-107.387 [0.178]	-67.568 [0.154]	7.709 [0.386]	-56.015 [0.262]
F- test (p-value)	25.151 [0.000]	21.634 [0.000]	28.160 [0.000]	26.523 [0.000]
Hausman test (p-value)	39.70 [0.003]	18.91 [0.041]	20.85 [0.013]	33.62 [0.000]
Adjusted R <sup>2</sup>	0.501	0.595	0.523	0.523
Number of observations	64	63	64	64

P values are in square brackets.

\* significant at 10%; \*\* significant at 5%; \*\*\* significant at 1%

Fixed effects not reported

**Table 5: Estimation results (lagged explanatory variables)**

Dependent variable:	Gini (1)	Gini (2)	Quintile1 (3)	Quintile1 (4)
lgdp	-88.733 [0.279]	-55.348 [0.401]	31.335 [0.204]	19.645 [0.300]
lgdp <sup>2</sup>	4.676 [0.314]	2.857 [0.445]	-1.725 [0.221]	-1.045 [0.338]
primary	-0.140** [0.052]	-0.097* [0.087]	0.050*** [0.008]	0.018* [0.108]
secondary	0.138*** [0.006]		-0.060*** [0.002]	
aggdp		-0.616* [0.106]		0.013** [0.046]
m2gdp		0.134* [0.107]		-0.022* [0.095]
dcps	0.081** [0.023]		-0.018** [0.019]	
trade	0.172*** [0.002]	0.132** [0.042]	-0.020** [0.026]	
inflation		-0.000 [0.793]		-0.000 [0.826]
natres		0.170 [0.294]	-0.072** [0.088]	-0.085* [0.097]
land	38.132** [0.015]	25.587 [0.167]		
corrupt	1.432* [0.053]	1.221** [0.061]	-0.719** [0.013]	-0.878*** [0.011]
land		29.880 [0.165]		
fdi		0.166 [0.096]		-0.036** [0.038]
priv		0.174 [0.182]		-0.073* [0.092]
Constant	325.271 [0.159]	283.196 [0.56]	-135.870 [0.202]	-86.750 [0.288]
F- test (p-value)	21.68 [0.000]	24.661 [0.000]	18.63 [0.000]	22.87 [0.000]
Hausman test (p-value)	14.78 [0.029]	19.32 [0.032]	19.35 [0.0072]	20.32 [0.009]
Adj R <sup>2</sup>	0.54	0.57	0.52	0.51
Number of observations	52	51	51	48

P values are in square brackets.

\* significant at 10%; \*\* significant at 5%; \*\*\* significant at 1%

Fixed effects not reported

**Table 6: Estimation results (adjusted Gini coefficient)**

Dependent variable: Unbounded Gini coefficient	1	2
lgdp	-3.250 [0.222]	-3.081 [0.252]
lgdp <sup>2</sup>	0.176 [0.234]	0.169 [0.269]
primary	-0.0055** [0.037]	-0.006** [0.023]
secondary	0.002** [0.083]	0.005** [0.047]
aggdp		-0.001 [0.941]
m2gdp	0.005* [0.063]	
dcps		0.004** [0.027]
trade	0.007*** [0.002]	0.006*** [0.001]
inflation		0.000 [0.589]
natres	0.010* [0.053]	0.008 [0.333]
land	1.021** [0.021]	1.536** [0.033]
corrupt	0.066** [0.052]	0.067** [0.025]
fdi		-0.002 [0.321]
priv		0.006 [0.272]
Constant	13.735 [0.251]	19.033 [0.244]
F- test (p-value)	21.312 [0.000]	19.234 [0.000]
Hausman test (p-value)	17.514 (0.0235)	16.757 (0.0431)
Adjusted R <sup>2</sup>	0.521	0.536
Number of observations	66	70

P values are in square brackets.

\* significant at 10%; \*\* significant at 5%; \*\*\* significant at 1%

Fixed effects not reported

**Table 7: Estimation results (alternative measure of corruption)**

Dependent variable: Gini coefficient	1	2	3
lgdp	9.471 [0.754]	7.225 [0.709]	11.600 [0.423]
lgdp <sup>2</sup>	-0.460 [0.745]		
primary	-0.109** [0.034]	-0.280** [0.053]	-0.381** [0.013]
secondary		0.223** [0.017]	0.274*** [0.001]
aggdp		-1.953*** [0.008]	2.207*** [0.000]
m2gdp		0.051 [0.120]	
dcps			0.031 [0.353]
trade	0.066 [0.280]	0.285 [0.117]	0.263 [0.142]
inflation		-0.025 [0.765]	
natres	0.815 [0.020]		
land	-21.037 [0.3317]		
cpi	0.840 [0.120]	1.785 [0.105]	3.024 [0.112]
fdi	0.073 [0.003]		
priv	0.193 [0.132]		
Constant	28.321 [0.963]	30.813 [0.816]	46.929 [0.712]
F- test (p-value)	18.32 [0.000]	21.67 [0.000]	19.63 [0.000]
Hausman test (p-value)	18.75 (0.027)	15.29 (0.033)	17.25 (0.029)
Adjusted R <sup>2</sup>	0.51	0.46	0.44
Number of observations	54	54	48

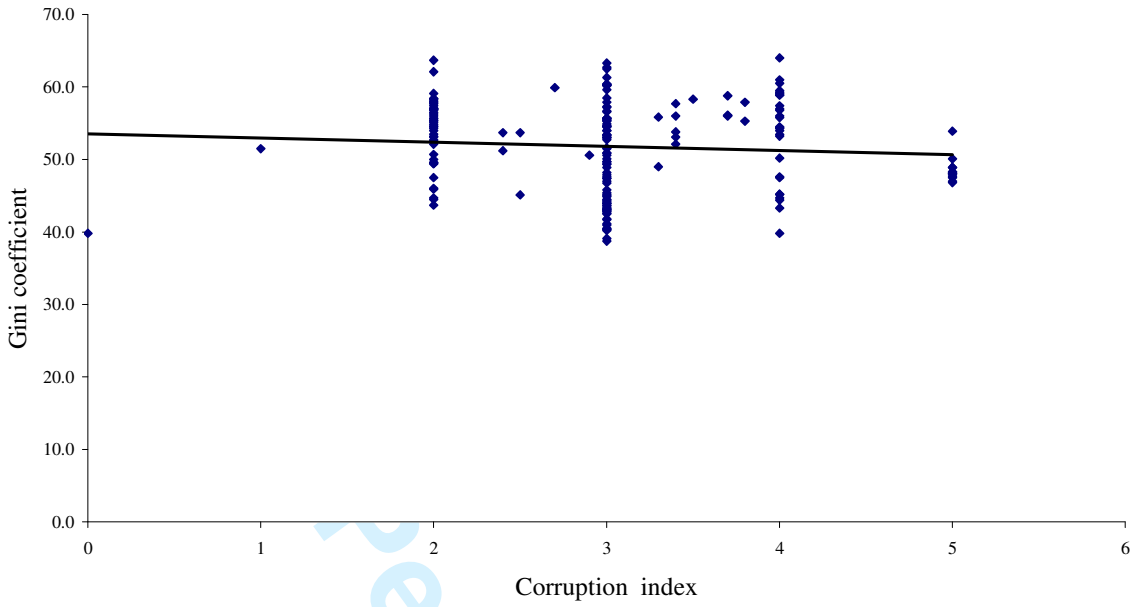
P values are in square brackets.

\* significant at 10%; \*\* significant at 5%; \*\*\* significant at 1%

Fixed effects not reported

1  
2  
3  
4  
5  
6  
7  
8  
9  
10  
11  
12  
13  
14  
15  
16  
17  
18  
19  
20  
21  
22  
23  
24  
25  
26  
27  
28  
29  
30  
31  
32  
33  
34  
35  
36  
37  
38  
39  
40  
41  
42  
43  
44  
45  
46  
47  
48  
49  
50  
51  
52  
53  
54  
55  
56  
57  
58  
59  
60

Figure 1: Inequality and Corruption



Peer Review Only

1  
2  
3  
4  
5  
6  
7  
8  
9  
10  
11  
12  
13  
14  
15  
16  
17  
18  
19  
20  
21  
22  
23  
24  
25  
26  
27  
28  
29  
30  
31  
32  
33  
34  
35  
36  
37  
38  
39  
40  
41  
42  
43  
44  
45  
46  
47  
48  
49  
50  
51  
52  
53  
54  
55  
56  
57  
58  
59  
60

---

1 One example is the failure to invest in public education which helped to protect the vested interests of the elite group.

2 It has been suggested that international organisations have attempted to de-politicise corruption by adopting terminology such as good governance and transparency.

3 Taxes on formal firms constitute a major source of government revenues, especially in developing countries. Regulation refers to environmental protection, consumer protection, quality control, workers' welfare etc. Bureaucratic requirements pertain to a firms having accountants and lawyers. All of these will increase the operational costs of a business.

4 This has been termed a political Kuznets curve. See also Acemoglu and Robinson (2000).

5 The countries included in the sample are: Argentina, Bolivia, Brazil, Chile, Colombia, Costa Rica, Dominican Republic, Ecuador, Guatemala, Honduras, Jamaica, Mexico, Nicaragua, Panama, Paraguay, Peru, El Salvador, Uruguay, and Venezuela.

6 Available on <http://www.wider.unu.edu/wiid/wiid.htm>.

7 One limitation of the income measure is an upward bias in the Gini coefficient since individuals/households can smooth their consumption via borrowing, in spite of fluctuating income. Furthermore, in Latin American countries the large informal sector means an underreporting of income. This will amplify the Gini coefficient, hence one may believe that inequality is worse than it actually is.

8 Ginis based on the individual are expected to be higher than those based on the household because there is a tendency for poorer households to be larger than richer ones. Also, households are in a better position to make adjustments to expenditure patterns than individuals. With progressive tax systems, the Gini coefficient based on net income is expected to be lower than that based on gross income.

9 Lambsdorff (2006) cautions that this index does not measure a country's level of corruption but the political risk involved in corruption. However, the ICRG index has been widely used to measure corruption (e.g., Clague, 1997; Chong and Calderón, 2000; Fisman and Gatti, 2002).

10 Available on [http://pwt.econ.upenn.edu/php\\_site/pwt62/pwt62\\_form.php](http://pwt.econ.upenn.edu/php_site/pwt62/pwt62_form.php)

11 Many researchers discuss the channels through which inequality affects corruption (e.g Jong-Sung & Khagram, 2005; Uslander, 2006).

12 In any event we do not have data on this variable for all four-year averages.

13 Dynamic panel estimation would be an ideal procedure to adopt given the lack of suitable instruments. However, missing observations and the fact that the Arellano-Bond method involves differencing the variables and using lags as instruments, would leave us with too few observations.

14 We also tested for the presence of a non-monotonic relationship between corruption and inequality (political Kuznets curve) by including a squared term for the corruption variable. It was not significant.

15 According to Maloney (2004) the informal sector includes 30-70 per cent of urban workers in Latin America.

16 This is true even for Chile (South America's most stable economy) over the first half of the 1990s, where 90 per cent of all jobs originated in the informal sector. In Peru, the economy would have to grow by 7 per cent each year to accommodate the demand for jobs. Venezuela's informal sector accounts for more than half the workforce despite being an oil rich economy that once boasted of Latin America's highest GDP per capita.

17 Other measures of openness were also investigated, including the Sachs and Warner openness index and the average tariff rate.

18 We also included other interaction terms that have been used in the literature such as natural resource abundance\*corruption, openness\*natural resource abundance, and openness\*secondary (see Perry and Olarreaga, 2006).

19 The variables are lagged one period. Any further lags would result in too few degrees of freedom. The lagged values can be seen as pseudo-instruments in the regression and their effect is to lessen the potential problems of endogeneity and simultaneity.

20 According to UN figures, one in five 10-14 year olds work in Brazil, Honduras and Haiti, and more than one in ten work in most Latin American and Caribbean countries. The International Labor Organisation puts the figure for the total number of working children (aged between 5 and 14 years) in Latin America and the Caribbean at 17.5 million.

See [http://natlex.ilo.ch/wcmsp5/groups/public/---ed\\_norm/---declaration/documents/publication/wcms\\_decl\\_fs\\_51\\_en.pdf](http://natlex.ilo.ch/wcmsp5/groups/public/---ed_norm/---declaration/documents/publication/wcms_decl_fs_51_en.pdf)