

LCMM: a R package for the estimation of latent class mixed models for Gaussian, ordinal, curvilinear longitudinal data and/or time-to-event data

Cécile Proust-Lima

Department of Biostatistics, INSERM U897, Bordeaux Segalen University

in collaboration with

Amadou Diakité and Benoit Liquet

Department of Biostatistics, INSERM U897, Bordeaux Segalen University

Rencontres R - Bordeaux - July 2nd, 2012

Context

Linear mixed model (LMM) routinely used in longitudinal studies to describe change over time of longitudinal outcomes according to covariates

Assumptions :

- (i) continuous longitudinal outcome
- (ii) Gaussian random-effects and errors
- (iii) linearity of the relationships with the outcome
- (iv) homogeneous population
- (v) missing at random data

Widely implemented : `lme`, `lmer` in R ; `proc mixed` in SAS

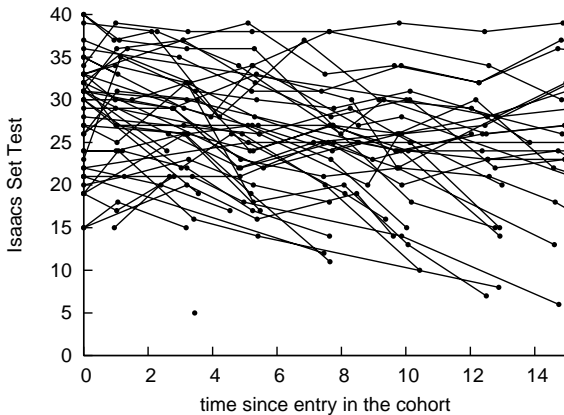
Objective of lcmm

To provide a package that extends the linear mixed model estimation to :

- heterogeneous populations (**relax (iv)**)
→ **hlme** for latent class linear mixed models (i.e. Gaussian continuous outcome)
- other types of longitudinal outcomes : ordinal, (bounded) quantitative non-Gaussian outcomes (**relax (i), (ii), (iii), (iv)**)
→ **lcmm** for general latent class mixed models with outcomes of different nature
- joint analysis of a time-to-event (**relax (iv), (v)**)
→ **Jointlcmm** for joint latent class models with a longitudinal outcome and a right-censored (left-truncated) time-to-event

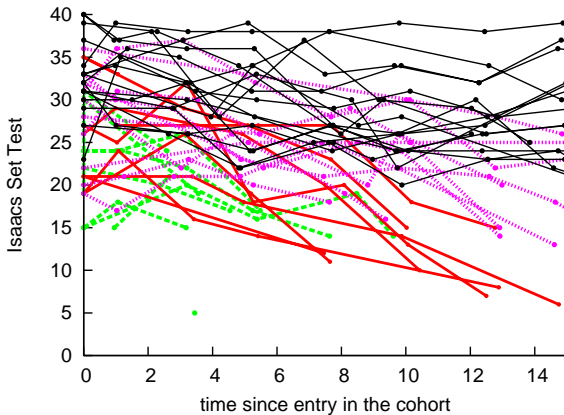
Heterogeneous profiles of trajectory

Ex : Trajectories of verbal fluency in the elderly



Heterogeneous profiles of trajectory

Ex : Trajectories of verbal fluency in the elderly



Latent class linear mixed model : the model

N subjects ($i, i = 1, \dots, N$) & G latent classes ($g, g = 1, \dots, G$)

Discrete latent variable c_i for the latent group structure :

$c_i = g$ if subject i belongs to class g

$$\pi_{ig} = P(c_i = g | X_{1i}) = \frac{e^{\xi_{0g} + X_{1i}' \xi_{1g}}}{\sum_{l=1}^G e^{\xi_{0l} + X_{1i}' \xi_{1l}}}$$

Repeated measures of the longitudinal marker Y_{ij} ($j = 1, \dots, n_i$) :

$$Y_{ij} | c_i = g = Z'_{ij} u_{ig} + X'_{2ij} \beta + X'_{3ij} \gamma_g + \epsilon_{ij}$$

Z_{ij}, X_{2ij}, X_{3ij} : 3 different vectors of covariates without overlap
 $u_{ig} \sim \mathcal{N}(\mu_g, \omega_g^2 B)$ & $\epsilon_{ij} \sim \mathcal{N}(0, \sigma^2)$

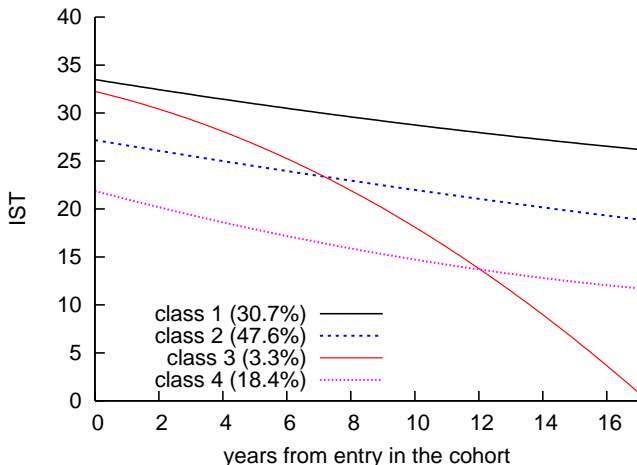
Latent class linear mixed model : the implementation

```
hlme(fixed= Y ~ Time+X1+Time:X1, random=~ Time,
subject='ID', mixture=~ Time, classmb=~ X2+X3, ng=2,
data=data_hlme, B=Binit)
```

Program details :

- Program written in Fortran90 and interfaced in R
- Marquardt algorithm for a fixed number of latent classes (strict convergence criteria : likelihood & parameters & derivatives)
- Any functions of time for the longitudinal marker
- Predictors of the trajectory (fixed/mixture arguments) + predictors of the class membership (classmb)
- Posterior functions : posterior classification, table of classification (postprob function), residuals, predictions (output element pred)

Example : profiles of verbal fluency trajectories

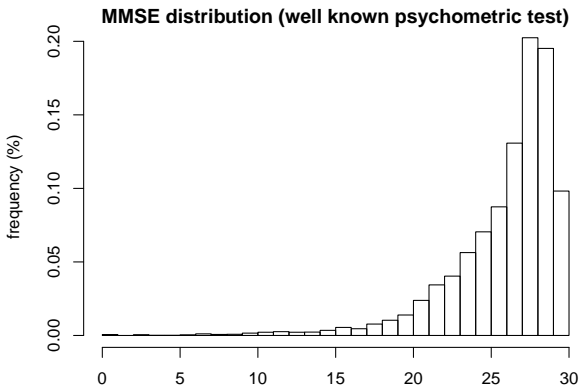


using `plot.predict` function

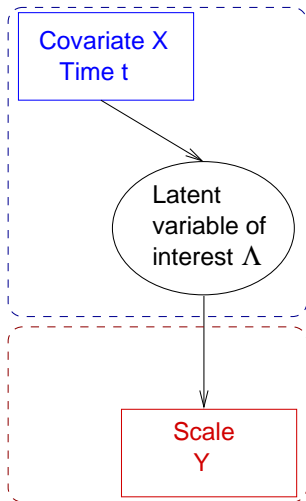
Curvilinear continuous or ordinal outcomes

Psychological & quality-of-life longitudinal scales

- bounded quantitative or ordinal longitudinal markers
- varying sensitivity to change & ceiling/floor effects (“curvilinearity”)



Latent process mixed model (with latent classes)



Structural Equation

← Standard linear mixed model or latent class linear mixed model

$$\Lambda_i(t) = \beta_0 + \beta_1 t + \beta_2 X_i + \beta_3 X_i \times t + u_{0i} + u_{1i} t$$

Equation of observation

← link between the latent process and the outcome

$$H(Y_i(t); \eta) = \Lambda_i(t) + \epsilon_i(t)$$

with $H(\cdot; \eta) =$ linear, Beta CdF, I-splines, thresholds, etc

and $\epsilon_i(t) \sim \mathcal{N}(0, \sigma^2)$ - (constraints : $\beta_0 = 0$ and $\sigma = 1$)

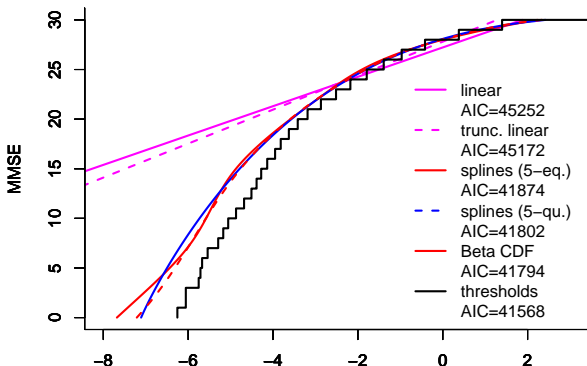
General latent class mixed model : the implementation

```
lcmm(Y ~ Time+X1+X1:time, random=~ Time, subject='ID',
mixture=~ Time, classmb=~ X2+X3, ng=2, link='splines')
```

Program details :

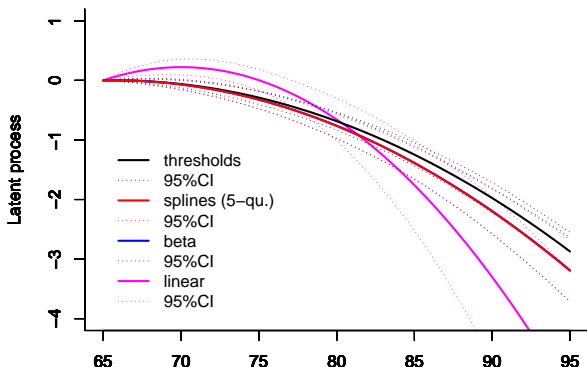
- Marquardt algorithm for a fixed number of latent classes (*strict convergence criteria*)
- Likelihood : closed form if continuous transformations (*Jacobian decomposition*) and approximated by Gauss-Hermite quadrature for threshold models (*cumulated probit model*)
- Goodness-of-fit : usual information criteria + “discrete” AIC (& UACV) for comparing discrete and continuous models
- Predictions in the original scale : direct or using numerical integration

Transformations of a psychometric test (MMSE)



using `plot.linkfunction` function or `estimlink` output
+ discrete AIC (and UACV)

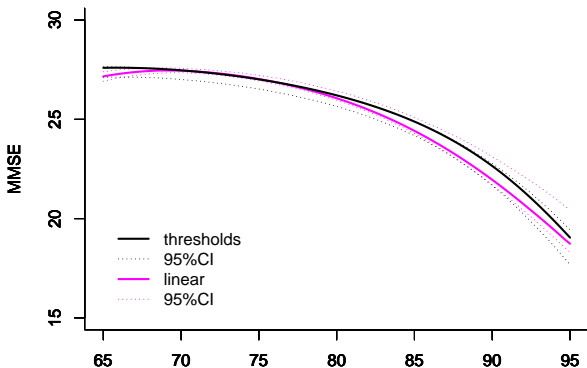
Predictions in the latent process scale



using `plot.predict` function

→ *similar technique and output with covariate effects and/or latent classes*

Predictions in the MMSE scale

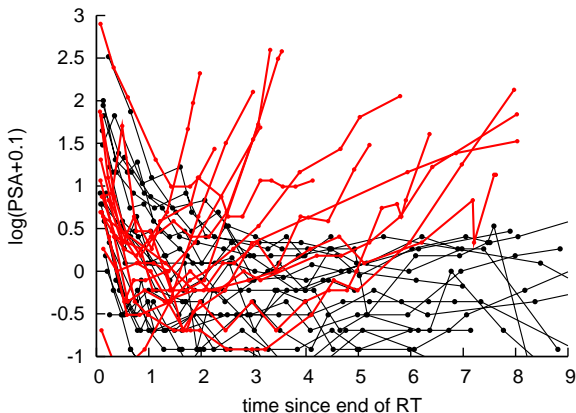


using predictY function with Bayesian approximation of the predictions distribution

→ *similar technique and output with covariate effects and/or latent classes*

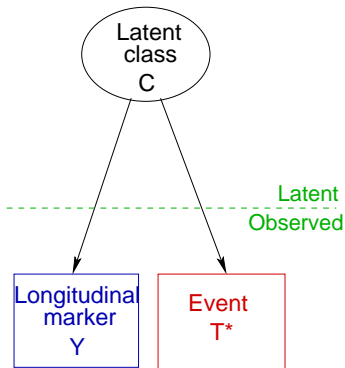
Heterogeneous profiles of trajectory in link with a clinical event

Ex : PSA trajectories after radiation therapy in Prostate Cancer



no recurrence of Prostate cancer vs. **recurrence of Prostate cancer**

Joint latent class model : the principle



Subject i ($i=1, \dots, N$)
 Class g ($g=1, \dots, G$)
 Occasion j ($j=1, \dots, n_i$)

- Latent classes of subjects :
 → latent class membership :

$$\pi_{ig} = P(c_i = g | X_{1i}) = \frac{e^{\xi_{0g} + X_{1i}^T \xi_{1g}}}{\sum_{l=1}^G e^{\xi_{0l} + X_{1i}^T \xi_{1l}}}$$

- Given class g ,
 → specific marker evolution
 (mixed model)
 → specific risk of event
 (prop. hazard model)

Joint latent class model : the implementation

```
Jointlcmm(Y ~ Time+X1+X1:time, random=~ Time,
subject='ID', mixture=~ Time, classmb=~ X2+X3, ng=2,
survival=Surv(Tevt,Event) ~ X1 + mixture(X4),
hazard='Weibull-Specific')
```

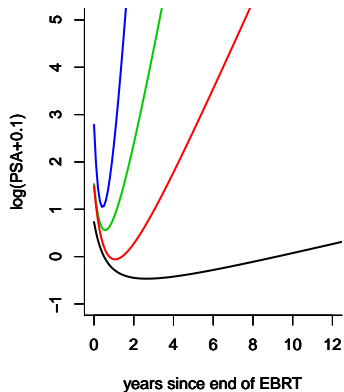
Program details :

- Same methodology as hlme and lcmm
- PHM with different possible hazards families (splines, piecewise, weibull) and specification (common, specific, proportional over classes) + delayed entry
- Class-specific & class-common effects in the 3 submodels
- Information criteria + score test for conditional independence
- Predictive accuracy measures

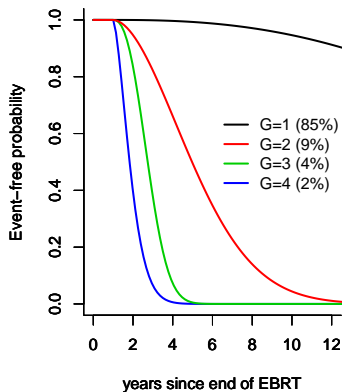
Predicted trajectories & survival functions from JLCM

(Proust-Lima, 2012)

Mean predicted PSA trajectories



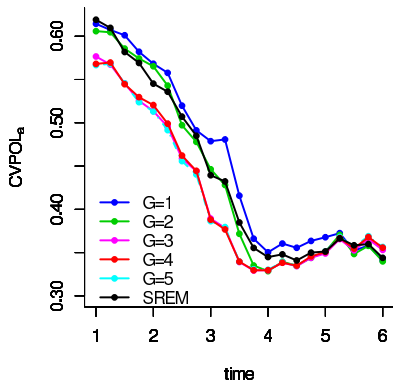
Mean predicted event-free probabilities



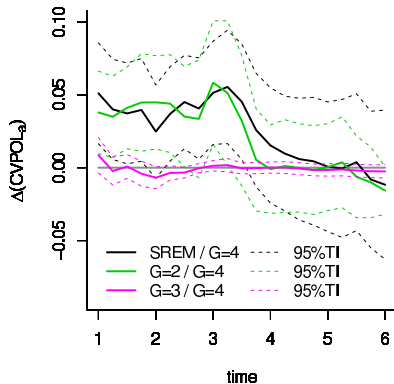
using `plot.predict` and `plot.survival` functions

Dynamic predictive accuracy (EPOCE) (Commenges, 2012; Proust-Lima, 2012)

EPOCE estimate



Difference in EPOCE estimate



using epoce and diffepoce functions

Concluding remarks on lcmm R package

Extensions of the linear mixed model in MLE framework :

- `hlme` : flexibility in covariate effects, trajectories
- `lcmm` : analysis of subjective measures (psychological scales, patient-reported-outcomes)
- `Jointlcmm` : computationally attractive alternative to R package JM (for shared random-effect joint models)

Planned improvements :

- other outcomes in `Jointlcmm` (+ Poisson, logit in `lcmm`)
- more post-fit analyses, estimation options, package spreading, tutorials ...
- same methods for `multivariate longitudinal outcomes` interface in R (available in Fortran90).

Aknowledgements + references

Funding : ANR MOBIDYQ [#2010 PRSP 006 01]
+ INCa PREDYC [#2010-059]

References :

On joint latent class models and predictive accuracy :

- Commenges, Liquelet & Proust-Lima (2012). *Biometrics*, early view.
- Proust-Lima, Séne, Taylor & Jacqmin-Gadda (2012). *Statistical Methods in Medical Research*, early view.
- Proust-Lima & Taylor (2009). *Biostatistics*, **10**, 535-49

On latent process mixed models :

- Proust-Lima, Amieva, Jacqmin-Gadda (2012). *paper in revision*, available on request
- Proust-Lima, Dartigues, Jacqmin-Gadda (2011). *AJE*, **174(9)**, 1077-88