



**HAL**  
open science

# New semiparametric stationarity tests based on adaptive multidimensional increment ratio statistics

Jean-Marc Bardet, Béchir Dola

► **To cite this version:**

Jean-Marc Bardet, Béchir Dola. New semiparametric stationarity tests based on adaptive multidimensional increment ratio statistics. 2012. hal-00716469v1

**HAL Id: hal-00716469**

**<https://hal.science/hal-00716469v1>**

Preprint submitted on 10 Jul 2012 (v1), last revised 15 Dec 2012 (v2)

**HAL** is a multi-disciplinary open access archive for the deposit and dissemination of scientific research documents, whether they are published or not. The documents may come from teaching and research institutions in France or abroad, or from public or private research centers.

L'archive ouverte pluridisciplinaire **HAL**, est destinée au dépôt et à la diffusion de documents scientifiques de niveau recherche, publiés ou non, émanant des établissements d'enseignement et de recherche français ou étrangers, des laboratoires publics ou privés.

# New semiparametric stationarity tests based on adaptive multidimensional increment ratio statistics

Jean-Marc Bardet and Béchir Dola

bardet@univ-paris1.fr, bechir.dola@malix.univ-paris1.fr

SAMM, Université Panthéon-Sorbonne (Paris I), 90 rue de Tolbiac, 75013 Paris, FRANCE

July 10, 2012

## Abstract

In this paper, we show that the adaptive multidimensional increment ratio estimator of the long range memory parameter defined in Bardet and Dola (2012) satisfies a central limit theorem (CLT in the sequel) for a large semiparametric class of Gaussian fractionally integrated processes with memory parameter  $d \in (-0.5, 1.25)$ . Since the asymptotic variance of this CLT can be computed, tests of stationarity or nonstationarity distinguishing the assumptions  $d < 0.5$  and  $d \geq 0.5$  are constructed. These tests are also consistent tests of unit root. Simulations done on a large benchmark of short memory, long memory and non stationary processes show the accuracy of the tests with respect to other usual stationarity or nonstationarity tests (KPSS, LMC, ADF and PP tests). Finally, the estimator and tests are applied to log-returns of famous economic data and to their absolute value power laws.

*Keywords:* Gaussian fractionally integrated processes; Adaptive semiparametric estimators of the memory parameter; test of long-memory; stationarity test; unit root test.

## 1 Introduction

Consider the set  $I(d)$  of fractionally integrated time series  $X = (X_k)_{k \in \mathbb{Z}}$  for  $-0.5 < d < 1.5$  by:

**Assumption  $I(d)$ :**  $X = (X_t)_{t \in \mathbb{Z}}$  is a time series if there exists a continuous function  $f^* : [-\pi, \pi] \rightarrow [0, \infty[$  satisfying:

1. if  $-0.5 < d < 0.5$ ,  $X$  is a stationary process having a spectral density  $f$  satisfying

$$f(\lambda) = |\lambda|^{-2d} f^*(\lambda) \quad \text{for all } \lambda \in (-\pi, 0) \cup (0, \pi), \text{ with } f^*(0) > 0. \quad (1.1)$$

2. if  $0.5 \leq d < 1.5$ ,  $U = (U_t)_{t \in \mathbb{Z}} = X_t - X_{t-1}$  is a stationary process having a spectral density  $f$  satisfying

$$f(\lambda) = |\lambda|^{2-2d} f^*(\lambda) \quad \text{for all } \lambda \in (-\pi, 0) \cup (0, \pi), \text{ with } f^*(0) > 0. \quad (1.2)$$

The case  $d \in (0, 0.5)$  is the case of long-memory processes, while short-memory processes are considered when  $-0.5 < d \leq 0$  and nonstationary processes when  $d \geq 0.5$ . ARFIMA( $p, d, q$ ) processes (which are linear processes) or fractional Gaussian noises (with parameter  $H = d + 1/2 \in (0, 1)$ ) are famous examples of processes satisfying Assumption  $I(d)$ . The purpose of this paper is twofold: firstly, we establish the consistency

of an adaptive semiparametric estimator of  $d$  for any  $d \in (-0.5, 1.25)$ . Secondly, we use this estimator for building new semiparametric stationary tests.

Numerous articles have been devoted to estimate  $d$  in the case  $d \in (-0.5, 0.5)$ . The books of Beran (1994) or Doukhan *et al.* (2003) provide large surveys of such parametric (mainly maximum likelihood or Whittle estimators) or semiparametric estimators (mainly local Whittle, log-periodogram or wavelet based estimators). Here we will restrict our discussion to the case of semiparametric estimators that are best suited to address the general case of processes satisfying Assumption  $I(d)$ . Even if first versions of local Whittle, log-periodogram and wavelet based estimators (see for instance Robinson, 1995a and 1995b, Abry and Veitch, 1998) are only considered in the case  $d < 0.5$ , new extensions have been provided for also estimating  $d$  when  $d \geq 0.5$  (see for instance Hurvich and Ray, 1995, Velasco, 1999a, Velasco and Robinson, 2000, Moulines and Soulier, 2003, Phillips and Shimotsu, 2005, Giraitis *et al.*, 2003 or Moulines *et al.*, 2007,). Moreover, adaptive versions of these estimators have also been defined for avoiding any trimming or bandwidth parameters generally required by these methods (see for instance Moulines and Soulier, 2003, or Veitch *et al.*, 2003, or Bardet *et al.*, 2008). However there still no exists an adaptive estimator of  $d$  satisfying a central limit theorem (for providing confidence intervals or tests) and valid for  $d < 0.5$  but also for  $d \geq 0.5$ . This is the first objective of this paper and it will be achieved using multidimensional Increment Ratio (IR) statistics. Indeed, Surgailis *et al.* (2008) first defined the statistic  $IR_N$  (see its definition in (2.3)) from an observed trajectory  $(X_1, \dots, X_N)$ . Its asymptotic behavior is studied and a central limit theorem (CLT in the sequel) is established for  $d \in (-0.5, 0.5) \cup (0.5, 1.25)$  inducing a CLT. Therefore, the estimator  $\hat{d}_N = \Lambda_0^{-1}(IR_N)$ , where  $d \mapsto \Lambda_0(d)$  is a smooth and increasing function, is a consistent estimator of  $d$  satisfying also a CLT (see more details below). However this new estimator was not totally satisfying: firstly, it requires the knowledge of the second order behavior of the spectral density that is clearly unknown in practice. Secondly, its numerical accuracy is interesting but clearly less than the one of local Whittle or log-periodogram estimators. As a consequence, in Bardet and Dola (2012), we built an adaptive multidimensional IR estimator  $\tilde{d}_N^{(IR)}$  (see its definition in (3.2)) answering to both these points but only for  $-0.5 < d < 0.5$ . This is an adaptive semiparametric estimator of  $d$  and its numerical performances are often better than the ones of local Whittle or log-periodogram estimators.

Here we extend this preliminary work to the case  $0.5 \leq d < 1.25$ . Hence we obtain a CLT satisfied by  $\tilde{d}_N^{(IR)}$  for all  $d \in (-0.5, 1.25)$  with an explicit asymptotic variance depending only on  $d$  and this notably allows to obtain confidence intervals. The case  $d = 0.5$  is now studied and this offers new interesting perspectives: our adaptive estimator can be used for building a stationarity (or nonstationarity) test since 0.5 is the “border number” between stationarity and nonstationarity.

There exist several famous stationarity (or nonstationarity) tests. For stationarity tests we may cite the KPSS (Kwiatkowski, Phillips, Schmidt, Shin) test (see for instance Hamilton, 1994, p. 514) and LMC test (see Leybourne and McCabe, 2000). For nonstationarity tests we may cite the Augmented Dickey-Fuller test (ADF test in the sequel, see Hamilton, 1994, p. 516-528) and the Philipps and Perron test (PP test in the sequel, see for instance Elder, 2001, p. 137-146). All these tests are unit root tests, *i.e.* and roughly speaking, semiparametric tests based on the model  $X_t = \rho X_{t-1} + \varepsilon_t$  with  $|\rho| \leq 1$ . A test about  $d = 0.5$  for a process satisfying Assumption  $I(d)$  is therefore a refinement of a basic unit root test since the case  $\rho = 1$  is a particular case of  $I(1)$  and the case  $|\rho| < 1$  a particular case of  $I(0)$ . Thus, a stationarity (or nonstationarity test) based on the estimator of  $d$  provides a more sensible test than usual unit root tests.

This principle of stationarity test linked to  $d$  was also already investigated in many articles. We can notably cite Robinson (1994), Tanaka (1999), Ling and Li (2001), Ling (2003) or Nielsen (2004). However, all these papers provide parametric tests, with a specified model (for instance ARFIMA or ARFIMA-GARCH processes). To our knowledge, such tests were not yet proposed and studied in a general semiparametric framework.

Here we slightly restrict the general class  $I(d)$  to the Gaussian semiparametric class  $IG(d, \beta)$  defined below

(see the beginning of Section 2). For processes belonging to this class, we construct a new stationarity test  $\tilde{S}_N$  which accepts the stationarity assumption when  $\tilde{d}_N^{(IR)} \leq 0.5 + s$  with  $s$  a threshold depending on the type I error test and  $N$ , while the new nonstationarity test  $\tilde{T}_N$  accepts the nonstationarity assumption when  $\tilde{d}_N^{(IR)} \geq 0.5 - s$ . Note that  $\tilde{d}_N^{(IR)} \leq s'$  also provides a test for deciding between short and long range dependency, as this is done by the V/S test (see details in Giraitis *et al.*, 2003)

In Section 5, numerous simulations are realized on several models of time series (short and long memory processes).

First, the new multidimensional IR estimator  $\tilde{d}_N^{(IR)}$  is compared to the most efficient and famous semiparametric estimators for  $d \in [-0.4, 1.2]$ ; the performances of  $\tilde{d}_N^{(IR)}$  are extremely convincing and globally better than the other estimators.

Secondly, the new stationarity  $\tilde{S}_N$  and nonstationarity  $\tilde{T}_N$  tests are compared on the same benchmark of processes to the most famous unit root tests (KPSS and LMC, ADF and PP tests). And the results are quite surprising: even on AR[1] or ARIMA[1, 1, 0] processes, multidimensional IR  $\tilde{S}_N$  and  $\tilde{T}_N$  tests provide better results than KPSS and LMC stationarity tests which are nevertheless constructed for such processes. Note however that ADF and PP tests provide results slightly better than  $\tilde{S}_N$  and  $\tilde{T}_N$  tests for these processes. For long-memory processes (such as ARFIMA processes), the results are clear:  $\tilde{S}_N$  and  $\tilde{T}_N$  tests are efficient tests of (non)stationarity while KPSS, LMC, ADF and PP tests are not relevant at all.

Finally, we studied the stationarity and long range dependency properties of Econometric data. We chose to apply estimators and tests to the log-returns of daily closing value of 5 classical Stocks and Exchange Rate Markets. After cutting the series in 3 stages using an algorithm of change detection, we found again this well known result: the log-returns are stationary and short memory processes while absolute values or powers of absolute values of log-returns are generally stationary and long memory processes. Classical stationarity or nonstationarity tests are not able to lead to such conclusions. We also remarked that these time series during the “last” (and third) stages (after 1997 for almost all) are generally closer to nonstationary processes than during the previous stages with a long memory parameter close to 0.5.

The forthcoming Section 2 is devoted to the definition and asymptotic behavior of the adaptive multidimensional IR estimator of  $d$ . The stationarity and nonstationarity tests are presented in Section 4 while Section 5 provides the results of simulations and application on econometric data. Finally Section 6 contains the proofs of main results.

## 2 The multidimensional increment ratio statistic

In this paper we consider a semiparametric class  $IG(d, \beta)$ : for  $0 \leq d < 1.5$  and  $\beta > 0$  define:

**Assumption  $IG(d, \beta)$ :**  $X = (X_t)_{t \in \mathbb{Z}}$  is a Gaussian time series such that there exist  $\epsilon > 0$ ,  $c_0 > 0$ ,  $c'_0 > 0$  and  $c_1 \in \mathbb{R}$  satisfying:

1. if  $d < 0.5$ ,  $X$  is a stationary process having a spectral density  $f$  satisfying for all  $\lambda \in (-\pi, 0) \cup (0, \pi)$

$$f(\lambda) = c_0 |\lambda|^{-2d} + c_1 |\lambda|^{-2d+\beta} + O(|\lambda|^{-2d+\beta+\epsilon}) \quad \text{and} \quad |f'(\lambda)| \leq c'_0 \lambda^{-2d-1}. \quad (2.1)$$

2. if  $0.5 \leq d < 1.5$ ,  $U = (U_t)_{t \in \mathbb{Z}} = X_t - X_{t-1}$  is a stationary process having a spectral density  $f$  satisfying for all  $\lambda \in (-\pi, 0) \cup (0, \pi)$

$$f(\lambda) = c_0 |\lambda|^{2-2d} + c_1 |\lambda|^{2-2d+\beta} + O(|\lambda|^{2-2d+\beta+\epsilon}) \quad \text{and} \quad |f'(\lambda)| \leq c'_0 \lambda^{-2d+1}. \quad (2.2)$$

Note that Assumption  $IG(d, \beta)$  is a particular (but still general) case of the more usual set  $I(d)$  of fractionally integrated processes defined above.

**Remark 1.** We considered here only Gaussian processes. In Surgailis *et al.* (2008) and Bardet and Dola (2012), simulations exhibited that the obtained limit theorems should be also valid for linear processes. However a theoretical proof of such result would require limit theorems for functionals of multidimensional linear processes difficult to be established.

In this section, under Assumption  $IG(d, \beta)$ , we establish central limit theorems which extend to the case  $d \in [0.5, 1.25]$  those already obtained in Bardet and Dola (2012) for  $d \in (-0.5, 0.5)$ .

Let  $X = (X_k)_{k \in \mathbb{N}}$  be a process satisfying Assumption  $IG(d, \beta)$  and  $(X_1, \dots, X_N)$  be a path of  $X$ . For any  $\ell \in \mathbb{N}^*$  define

$$IR_N(\ell) := \frac{1}{N-3\ell} \sum_{k=0}^{N-3\ell-1} \frac{\left| \left( \sum_{t=k+1}^{k+\ell} X_{t+\ell} - \sum_{t=k+1}^{k+\ell} X_t \right) + \left( \sum_{t=k+\ell+1}^{k+2\ell} X_{t+\ell} - \sum_{t=k+\ell+1}^{k+2\ell} X_t \right) \right|}{\left| \sum_{t=k+1}^{k+\ell} X_{t+\ell} - \sum_{t=k+1}^{k+\ell} X_t \right| + \left| \sum_{t=k+\ell+1}^{k+2\ell} X_{t+\ell} - \sum_{t=k+\ell+1}^{k+2\ell} X_t \right|}. \quad (2.3)$$

The statistic  $IR_N$  was first defined in Surgailis *et al.* (2008) as a way to estimate the memory parameter. In Bardet and Surgailis (2011) a simple version of IR-statistic was also introduced to measure the roughness of continuous time processes. The main interest of such a statistic is to be very robust to additional or multiplicative trends.

As in Bardet and Dola (2012), let  $m_j = j m$ ,  $j = 1, \dots, p$  with  $p \in \mathbb{N}^*$  and  $m \in \mathbb{N}^*$ , and define the random vector  $(IR_N(m_j))_{1 \leq j \leq p}$ . In the sequel we naturally extend the results obtained for  $m \in \mathbb{N}^*$  to  $m \in (0, \infty)$  by the convention:  $(IR_N(j m))_{1 \leq j \leq p} = (IR_N(j [m]))_{1 \leq j \leq p}$  (which change nothing to the asymptotic results).

For  $H \in (0, 1)$ , let  $B_H = (B_H(t))_{t \in \mathbb{R}}$  be a standard fractional Brownian motion, *i.e.* a centered Gaussian process having stationary increments and such as  $\text{Cov}(B_H(t), B_H(s)) = \frac{1}{2}(|t|^{2H} + |s|^{2H} - |t-s|^{2H})$ . Now for  $d \in (-0.5, 0.5) \cup (0.5, 1.25)$  and  $j \in \mathbb{N}^*$ , define for  $\tau \in \mathbb{R}$ ,

$$Z_d^{(j)}(\tau) := \begin{cases} \frac{\sqrt{2d(2d+1)}}{\sqrt{|4^{d+0.5}-4|}} \int_0^1 (B_{d-0.5}(\tau+s+j) - B_{d-0.5}(\tau+s)) ds & \text{if } d \in (0.5, 1.25) \\ \frac{1}{\sqrt{|4^{d+0.5}-4|}} (B_{d+0.5}(\tau+2j) - 2B_{d+0.5}(\tau+j) + B_{d+0.5}(\tau)) & \text{if } d \in (-0.5, 0.5) \end{cases}. \quad (2.4)$$

Note that  $(Z_d^{(j)}(\tau))_\tau$  is a stationary Gaussian process for any  $d \in (-0.5, 0.5) \cup (0.5, 1.25)$ . When  $d = 0.5$ , such definition does not hold. However for  $p \in \mathbb{N}^*$ , a definition of the multidimensional process  $(Z_{0.5}^{(1)}(\tau), \dots, Z_{0.5}^{(p)}(\tau))_{\tau \in \mathbb{R}}$  can be obtained by continuous extension when  $d \rightarrow 0.5$  of the covariance of  $(Z_d^{(i)}(0), Z_d^{(j)}(\tau))$ . Therefore for  $\tau \in \mathbb{R}$ , we define  $(Z_{0.5}^{(1)}(\tau), \dots, Z_{0.5}^{(p)}(\tau))_\tau$  as a centered stationary Gaussian multidimensional process satisfying:

$$\text{Cov}(Z_{0.5}^{(i)}(0), Z_{0.5}^{(j)}(\tau)) := \frac{1}{4 \log 2} (-h(\tau+i-j) + h(\tau+i) + h(\tau-j) - h(\tau)) \quad \text{for } \tau \in \mathbb{R},$$

with  $h(x) = \frac{1}{2}(|x-1|^2 \log|x-1| + |x+1|^2 \log|x+1| - 2|x|^2 \log|x|)$  for  $x \in \mathbb{R}$ , using the convention  $0 \times \log 0 = 0$ . Now, we establish a multidimensional central limit theorem satisfied by  $(IR_N(j m))_{1 \leq j \leq p}$  for all  $d \in (-0.5, 1.25)$ :

**Proposition 1.** Assume that Assumption  $IG(d, \beta)$  holds with  $-0.5 \leq d < 1.25$  and  $\beta > 0$ . Then

$$\sqrt{\frac{N}{m}} \left( IR_N(j m) - \mathbb{E}[IR_N(j m)] \right)_{1 \leq j \leq p} \xrightarrow[N/m \wedge m \rightarrow \infty]{\mathcal{L}} \mathcal{N}(0, \Gamma_p(d)) \quad (2.5)$$

with  $\Gamma_p(d) = (\sigma_{i,j}(d))_{1 \leq i, j \leq p}$  where for  $i, j \in \{1, \dots, p\}$ ,

$$\sigma_{i,j}(d) := \int_{-\infty}^{\infty} \text{Cov} \left( \frac{|Z_d^{(i)}(0) + Z_d^{(i)}(i)|}{|Z_d^{(i)}(0)| + |Z_d^{(i)}(i)|} \frac{|Z_d^{(j)}(\tau) + Z_d^{(j)}(\tau+j)|}{|Z_d^{(j)}(\tau)| + |Z_d^{(j)}(\tau+j)|} \right) d\tau. \quad (2.6)$$

The proof of this proposition as well as all the other proofs is given in Section 6. As numerical experiments seem to show, we will assume in the sequel that  $\Gamma_p(d)$  is a definite positive matrix for all  $d \in (-0.5, 1.25)$ . Now, this central limit theorem can be used for estimating  $d$ . To begin with,

**Property 2.1.** *Let  $X$  satisfying Assumption  $IG(d, \beta)$  with  $0.5 \leq d < 1.5$  and  $0 < \beta \leq 2$ . Then, there exists a non-vanishing constant  $K(d, \beta)$  depending only on  $d$  and  $\beta$  such that for  $m$  large enough,*

$$\mathbb{E}[IR_N(m)] = \begin{cases} \Lambda_0(d) + K(d, \beta) \times m^{-\beta} (1 + o(1)) & \text{if } \beta < 1 + 2d \\ \Lambda_0(d) + K(0.5, \beta) \times m^{-2} \log m (1 + o(1)) & \text{if } \beta = 2 \text{ and } d = 0.5 \end{cases}$$

$$\text{with } \Lambda_0(d) := \Lambda(\rho(d)) \text{ where } \rho(d) := \begin{cases} \frac{4^{d+1.5} - 9^{d+0.5} - 7}{2(4 - 4^{d+0.5})} & \text{for } 0.5 < d < 1.5 \\ \frac{9 \log(3)}{8 \log(2)} - 2 & \text{for } d = 0.5 \end{cases} \quad (2.7)$$

$$\text{and } \Lambda(r) := \frac{2}{\pi} \arctan \sqrt{\frac{1+r}{1-r}} + \frac{1}{\pi} \sqrt{\frac{1+r}{1-r}} \log\left(\frac{2}{1+r}\right) \text{ for } |r| \leq 1. \quad (2.8)$$

Therefore by choosing  $m$  and  $N$  such as  $(\sqrt{N/m})m^{-\beta} \log m \rightarrow 0$  when  $m, N \rightarrow \infty$ , the term  $\mathbb{E}[IR(jm)]$  can be replaced by  $\Lambda_0(d)$  in Proposition 1. Then, using the Delta-method with the function  $(x_i)_{1 \leq i \leq p} \mapsto (\Lambda_0^{-1}(x_i))_{1 \leq i \leq p}$  (the function  $d \in (-0.5, 1.5) \rightarrow \Lambda_0(d)$  is a  $\mathcal{C}^\infty$  increasing function), we obtain:

**Theorem 1.** *Let  $\hat{d}_N(jm) := \Lambda_0^{-1}(IR_N(jm))$  for  $1 \leq j \leq p$ . Assume that Assumption  $IG(d, \beta)$  holds with  $0.5 \leq d < 1.25$  and  $0 < \beta \leq 2$ . Then if  $m \sim C N^\alpha$  with  $C > 0$  and  $(1 + 2\beta)^{-1} < \alpha < 1$ ,*

$$\sqrt{\frac{N}{m}} \left( \hat{d}_N(jm) - d \right)_{1 \leq j \leq p} \xrightarrow[N \rightarrow \infty]{\mathcal{L}} \mathcal{N}\left(0, (\Lambda_0'(d))^{-2} \Gamma_p(d)\right). \quad (2.9)$$

This result is an extension to the case  $0.5 \leq d \leq 1.25$  from the case  $-0.5 < d < 0.5$  already obtained in Bardet and Dola (2012). Note that the consistency of  $\hat{d}_N(jm)$  is ensured when  $1.25 \leq d < 1.5$  but the previous CLT does not hold (the asymptotic variance of  $\sqrt{\frac{N}{m}} \hat{d}_N(jm)$  diverges to  $\infty$  when  $d \rightarrow 1.25$ , see Surgailis *et al.*, 2008).

Now define

$$\hat{\Sigma}_N(m) := (\Lambda_0'(\hat{d}_N(m)))^{-2} \Gamma_p(\hat{d}_N(m)). \quad (2.10)$$

The function  $d \in (-0.5, 1.5) \mapsto \sigma(d)/\Lambda'(d)$  is  $\mathcal{C}^\infty$  and therefore, under assumptions of Theorem 1,

$$\hat{\Sigma}_N(m) \xrightarrow[N \rightarrow \infty]{\mathcal{P}} (\Lambda_0'(d))^{-2} \Gamma_p(d).$$

Thus, a pseudo-generalized least square estimation (LSE) of  $d$  can be defined by

$$\tilde{d}_N(m) := (J_p'(\hat{\Sigma}_N(m))^{-1} J_p)^{-1} J_p'(\hat{\Sigma}_N(m))^{-1} (\hat{d}_N(m_i))_{1 \leq i \leq p}$$

with  $J_p := (1)_{1 \leq j \leq p}$  and denoting  $J_p'$  its transpose. From Gauss-Markov Theorem, the asymptotic variance of  $\tilde{d}_N(m)$  is smaller than the one of  $\hat{d}_N(jm)$ ,  $j = 1, \dots, p$ . Hence, we obtain under the assumptions of Theorem 1:

$$\sqrt{\frac{N}{m}} (\tilde{d}_N(m) - d) \xrightarrow[N \rightarrow \infty]{\mathcal{L}} \mathcal{N}\left(0, \Lambda_0'(d)^{-2} (J_p' \Gamma_p^{-1}(d) J_p)^{-1}\right). \quad (2.11)$$

### 3 The adaptive version of the estimator

Theorem 1 and CLT (2.11) require the knowledge of  $\beta$  to be applied. But in practice  $\beta$  is unknown. The procedure defined in Bardet *et al.* (2008) or Bardet and Dola (2012) can be used for obtaining a data-driven

selection of an optimal sequence  $(\tilde{m}_N)$  derived from an estimation of  $\beta$ . Since the case  $d \in (-0.5, 0.5)$  was studied in Bardet and Dola (2012) we consider here  $d \in [0.5, 1.25)$  and for  $\alpha \in (0, 1)$ , define

$$Q_N(\alpha, d) := (\widehat{d}_N(j N^\alpha) - \widetilde{d}_N(N^\alpha))'_{1 \leq j \leq p} (\widehat{\Sigma}_N(N^\alpha))^{-1} (\widehat{d}_N(j N^\alpha) - \widetilde{d}_N(N^\alpha))_{1 \leq j \leq p}, \quad (3.1)$$

which corresponds to the sum of the pseudo-generalized squared distance between the points  $(\widehat{d}_N(j N^\alpha))_j$  and PGLS estimate of  $d$ . Note that by the previous convention,  $\widehat{d}_N(j N^\alpha) = \widehat{d}_N(j [N^\alpha])$  and  $\widetilde{d}_N(N^\alpha) = \widetilde{d}_N([N^\alpha])$ . Then  $\widehat{Q}_N(\alpha)$  can be minimized on a discretization of  $(0, 1)$  and define:

$$\widehat{\alpha}_N := \text{Argmin}_{\alpha \in \mathcal{A}_N} \widehat{Q}_N(\alpha) \quad \text{with} \quad \mathcal{A}_N = \left\{ \frac{2}{\log N}, \frac{3}{\log N}, \dots, \frac{\log[N/p]}{\log N} \right\}.$$

**Remark 2.** *The choice of the set of discretization  $\mathcal{A}_N$  is implied by our proof of convergence of  $\widehat{\alpha}_N$  to  $\alpha^*$ . If the interval  $(0, 1)$  is stepped in  $N^c$  points, with  $c > 0$ , the used proof cannot attest this convergence. However  $\log N$  may be replaced in the previous expression of  $\mathcal{A}_N$  by any negligible function of  $N$  compared to functions  $N^c$  with  $c > 0$  (for instance,  $(\log N)^a$  or  $a \log N$  with  $a > 0$  can be used).*

From the central limit theorem (2.9) one deduces the following limit theorem:

**Proposition 2.** *Assume that Assumption IG( $d, \beta$ ) holds with  $0.5 \leq d < 1.25$  and  $0 < \beta \leq 2$ . Then,*

$$\widehat{\alpha}_N \xrightarrow[N \rightarrow \infty]{\mathcal{P}} \alpha^* = \frac{1}{(1 + 2\beta)}.$$

Finally define

$$\tilde{m}_N := N^{\widetilde{\alpha}_N} \quad \text{with} \quad \widetilde{\alpha}_N := \widehat{\alpha}_N + \frac{6 \widehat{\alpha}_N}{(p-2)(1-\widehat{\alpha}_N)} \cdot \frac{\log \log N}{\log N}.$$

and the estimator

$$\widetilde{d}_N^{(IR)} := \widetilde{d}_N(\tilde{m}_N) = \widetilde{d}_N(N^{\widetilde{\alpha}_N}). \quad (3.2)$$

(the definition and use of  $\widetilde{\alpha}_N$  instead of  $\widehat{\alpha}_N$  are explained just before Theorem 2 in Bardet and Dola, 2012). The following theorem provides the asymptotic behavior of the estimator  $\widetilde{d}_N^{(IR)}$ :

**Theorem 2.** *Under assumptions of Proposition 2,*

$$\sqrt{\frac{N}{N^{\widetilde{\alpha}_N}}} (\widetilde{d}_N^{(IR)} - d) \xrightarrow[N \rightarrow \infty]{\mathcal{L}} \mathcal{N}\left(0; \Lambda'_0(d)^{-2} (J'_p \Gamma_p^{-1}(d) J_p)^{-1}\right). \quad (3.3)$$

Moreover,  $\forall \rho > \frac{2(1+3\beta)}{(p-2)\beta}$ ,  $\frac{N^{\frac{\beta}{1+2\beta}}}{(\log N)^\rho} \cdot |\widetilde{d}_N^{(IR)} - d| \xrightarrow[N \rightarrow \infty]{\mathcal{P}} 0$ .

The convergence rate of  $\widetilde{d}_N^{(IR)}$  is the same (up to a multiplicative logarithm factor) than the one of minimax estimator of  $d$  in this semiparametric frame (see Giraitis *et al.*, 1997). The supplementary advantage of  $\widetilde{d}_N^{(IR)}$  with respect to other adaptive estimators of  $d$  (see for instance Moulines and Soulier, 2003, for an overview about frequency domain estimators of  $d$ ) is the central limit theorem (3.3) satisfied by  $\widetilde{d}_N^{(IR)}$ . Moreover  $\widetilde{d}_N^{(IR)}$  can be used for  $d \in (-0.5, 1.25)$ , *i.e.* as well for stationary and non-stationary processes, without modifications in its definition. Both this advantages allow to defined a stationarity test based on  $\widetilde{d}_N^{(IR)}$ .

## 4 New stationarity and nonstationarity tests

Assume that  $(X_1, \dots, X_N)$  is an observed trajectory of a process  $X = (X_k)_{k \in \mathbb{Z}}$ . We define here new stationarity and nonstationarity tests for  $X$  based on  $\widetilde{d}_N^{(IR)}$ .

## 4.1 A new stationarity test

There exist many stationarity and nonstationarity test. The most famous stationarity tests are certainly the following unit root tests:

- The KPSS (Kwiatowski, Phillips, Schmidt, Shin) test (see for instance Hamilton, 1994, p. 514);
- The LMC (Leybourne, McCabe) test which is a generalization of the KPSS test (see for instance Leybourne and McCabe, 1994 and 1999)

Here, we consider the following problem of test:

- $H_0$ :  $X$  is a stationary process.
- $H_1$ :  $X$  is not a stationary process.

We use a test based on  $\tilde{d}_N^{(IR)}$  for deciding between these hypothesis. Hence from the previous CLT 3.3 and with a type I error  $\alpha$ , define

$$\tilde{S}_N := \mathbf{1}_{\tilde{d}_N^{(IR)} > 0.5 + \sigma_p(0.5) q_{1-\alpha} N^{(\bar{\alpha}_N - 1)/2}}, \quad (4.1)$$

where  $\sigma_p(0.5) = \left( \Lambda'_0(0.5)^{-2} (J'_p \Gamma_p^{-1}(0.5) J_p)^{-1} \right)^{1/2}$  (see (3.3)) and  $q_{1-\alpha}$  is the  $(1 - \alpha)$  quantile of a standard Gaussian random variable  $\mathcal{N}(0, 1)$ .

Then we define the following rules of decision:

- $H_0$  is accepted (or equivalently  $X$  is a stationary process) when  $\tilde{S}_N = 0$ .
- $H_0$  is rejected (or equivalently  $X$  is a nonstationary process) when  $\tilde{S}_N = 1$ .

From previous results, it is clear that:

**Property 1.** *If  $X$  satisfies Assumption  $IG(d, \beta)$  with  $d < 0.5$  and  $\beta \in (0, 2]$  (stationary process), the asymptotic type I error of the test  $\tilde{S}_N$  is  $\alpha$  and the test power tends to 1 if  $X \in IG(d, \beta)$  with  $d \geq 0.5$  and  $\beta \in (0, 2]$ .*

Moreover, this test can be used as a unit root test. Indeed, define the following typical problem of unit root test. Let  $X_t = at + b + \varepsilon_t$ , with  $(a, b) \in \mathbb{R}^2$ , and  $\varepsilon_t$  an ARIMA( $p, d, q$ ) with  $d = 0$  or  $d = 1$ . Then, a (simplified) problem of a unit root test is to decide between:

- $H_0^{UR}$ :  $d = 0$  and  $(\varepsilon_t)$  is a stationary ARMA( $p, q$ ) process.
- $H_1^{UR}$ :  $d = 1$  and  $(\varepsilon_t - \varepsilon_{t-1})_t$  is a stationary ARMA( $p, q$ ) process.

Then,

**Property 2.** *Under assumption  $H_0^{UR}$ , the type I error of this unit root test problem using  $\tilde{S}_N$  decreases to 0 when  $N \rightarrow \infty$  and the test power tends to 1.*

## 4.2 A new nonstationarity test

Famous unit root tests are more often nonstationarity test. For instance, between the most famous tests,

- The Augmented Dickey-Fuller test (see Hamilton, 1994, p. 516-528 for details);
- The Philipps and Perron test (a generalization of the ADF test with more lags) (see for instance Elder, 2001, p. 137-146).

Using the statistic  $\tilde{d}_N^{(IR)}$  we propose a new nonstationarity test  $\tilde{T}_N$  for deciding between:



- $H'_0$ :  $X$  is a nonstationary process when  $\tilde{T}_N = 1$ ;
- $H'_1$ :  $X$  is a stationary process when  $\tilde{T}_N = 0$ ,

where

$$\tilde{T}_N := \mathbf{1}_{\tilde{d}_N^{(IR)} < 0.5 - \sigma_p(0.5) q_{1-\alpha} N^{(\tilde{\alpha}_N - 1)/2}}. \quad (4.2)$$

Then as previously

**Property 3.** *If  $X$  satisfies Assumption  $IG(d, \beta)$  with  $d \geq 0.5$  and  $\beta \in (0, 2]$  (nonstationary process), the asymptotic type I error of the test  $\tilde{T}_N$  is  $\alpha$  and the test power tends to 1 if  $X \in IG(d, \beta)$  with  $d < 0.5$  and  $\beta \in (0, 2]$ .*

As previously, this test can also be used as a unit root test where  $X_t = at + b + \varepsilon_t$ , with  $(a, b) \in \mathbb{R}^2$ , and  $\varepsilon_t$  an ARIMA( $p, d, q$ ) with  $d = 0$  or  $d = 1$ . We consider here a “second” simplified problem of unit root test which is to decide between:

- $H_0^{UR'}$ :  $d = 1$  and  $(\varepsilon_t - \varepsilon_{t-1})_t$  is a stationary ARMA( $p, q$ ) process.
- $H_1^{UR'}$ :  $d = 0$  and  $(\varepsilon_t)_t$  is a stationary ARMA( $p, q$ ) process..

Then,

**Property 4.** *Under assumption  $H_0^{UR'}$ , the type I error of the unit root test problem using  $\tilde{T}_N$  decreases to 0 when  $N \rightarrow \infty$  and the test power tends to 1.*

## 5 Results of simulations and application to Econometric and Financial data

### 5.1 Numerical procedure for computing the estimator and tests

First of all, softwares used in this Section are available on <http://samm.univ-paris1.fr/-Jean-Marc-Bardet> with a free access on (in Matlab language) as well as classical estimators or tests.

The concrete procedure for applying our MIR-test of stationarity is the following:

1. using additional simulations (realized on ARMA, ARFIMA, FGN processes and not presented here for avoiding too much expansions), we have observed that the value of the parameter  $p$  is not really important with respect to the accuracy of the test (less than 10% on the value of  $\tilde{d}_N^{(IR)}$ ). However, for optimizing our procedure we chose  $p$  as a stepwise function of  $n$ :

$$p = 5 \times \mathbf{1}_{\{n < 120\}} + 10 \times \mathbf{1}_{\{120 \leq n < 800\}} + 15 \times \mathbf{1}_{\{800 \leq n < 10000\}} + 20 \times \mathbf{1}_{\{n \geq 10000\}}$$

and  $\sigma_5(0.5) \simeq 0.9082$ ;  $\sigma_{10}(0.5) \simeq 0.8289$ ;  $\sigma_{15}(0.5) \simeq 0.8016$  and  $\sigma_{20}(0.5) \simeq 0.7861$ .

2. then using the computation of  $\tilde{m}_N$  presented in Section 3, the adaptive estimator  $\tilde{d}_N^{(IR)}$  (defined in (3.2)) and the test statistics  $\tilde{S}_N$  (defined in (4.1)) and  $\tilde{T}_N$  (defined in (4.2)) are computed.

### 5.2 Monte-Carlo experiments on several time series

In the sequel the results are obtained from 300 generated independent samples of each process defined below. The concrete procedures of generation of these processes are obtained from the circulant matrix method, as detailed in Doukhan *et al.* (2003). The simulations are realized for different values of  $d$  and  $N$  and processes which satisfy Assumption  $IG(d, \beta)$ :

1. the usual ARIMA( $p, d, q$ ) processes with respectively  $d = 0$  or  $d = 1$  and an innovation process which is a Gaussian white noise. Such processes satisfy Assumption  $IG(0, 2)$  or  $IG(1, 2)$  holds (respectively);
2. the ARFIMA( $p, d, q$ ) processes with parameter  $d$  such that  $d \in (-0.5, 1.25)$  and an innovation process which is a Gaussian white noise. Such ARFIMA( $p, d, q$ ) processes satisfy Assumption  $IG(d, 2)$  (note that ARIMA processes are particular cases of ARFIMA processes).
3. the Gaussian stationary processes  $X^{(d, \beta)}$ , such as its spectral density is

$$f_3(\lambda) = \frac{1}{\lambda^{2d}}(1 + \lambda^\beta) \quad \text{for } \lambda \in [-\pi, 0) \cup (0, \pi], \quad (5.1)$$

with  $d \in (-0.5, 1.5)$  and  $\beta \in (0, \infty)$ . Therefore the spectral density  $f_3$  implies that Assumption  $IG(d, \beta)$  holds.

### Comparison of $\tilde{d}_N^{(IR)}$ with other semiparametric estimators of $d$

Here we first compare the performance of the adaptive MIR-estimator  $\tilde{d}_N^{(IR)}$  with other famous semiparametric estimators of  $d$ :

- $\tilde{d}_N^{(MS)}$  is the adaptive global log-periodogram estimator introduced by Moulines and Soulier (2003), also called FEXP estimator, with bias-variance balance parameter  $\kappa = 2$ . Such an estimator was shown to be consistent for  $d \in ] - 0.5, 1.25]$ .
- $\tilde{d}_N^{(ROB)}$  is the local Whittle estimator introduced by Robinson (1995b). The trimming parameter is chosen as  $m = N/30$  (this is not an adaptive estimator). This estimator was shown to be consistent for  $d \in ] - 0.5, 1]$  and not consistent for  $d > 1$  (see Phillips and Shimotsu, 2004), with normality for  $d \in ] - 0.5, 0.75[$  (see Velasco, 1999b), consistency and normality for  $d \in ] - 0.5, 1.5[$  with tapering only (see Hurvich and Chen, 2000).
- $\tilde{d}_N^{(WAV)}$  is an adaptive wavelet based estimator introduced in Bardet *et al.* (2008) using a Lemarie-Meyer type wavelet (another similar choice could be the adaptive wavelet estimator introduced in Veitch *et al.*, 2003, using a Daubechie's wavelet, but its robustness property are slightly less interesting). The asymptotic normality of such estimator is established for  $d \in \mathbb{R}$  (when the number of vanishing moments of the wavelet function is large enough).

Table 1, 2, 3 and 4 respectively provide the results of simulations for ARIMA(1,  $d$ , 0), ARFIMA(0,  $d$ , 0), ARFIMA(1,  $d$ , 1) and  $X^{(d, 1)}$  processes for several values of  $d$  (or other parameters  $\phi$  or  $\theta$ ) and  $N$ .

**Conclusions of simulations:** In more than 50% of cases, the estimator  $\tilde{d}_N^{(IR)}$  provides the smallest  $\sqrt{MSE}$  among the 4 semiparametric estimators. The good performances of  $\tilde{d}_N^{(IR)}$  with respect to the other estimators are particularly clear for  $d \in [0.5, 1.20]$ . However, we can remark that the estimator  $\tilde{d}_N^{(IR)}$  is slightly less efficient for ARFIMA(1,  $d$ , 1) processes and especially  $X^{(d, 1)}$  processes, that is to say, when the spectral density is slightly less smooth (*i.e.* close to a power law function).

### Comparison of MIR tests $\tilde{S}_N$ and $\tilde{T}_N$ with other famous stationarity or nonstationarity tests

Monte-Carlo experiments were done for evaluating the performances of new tests  $\tilde{S}_N$  and  $\tilde{T}_N$  and for comparing them to most famous stationarity (KPSS and LMC) or nonstationarity (ADF and PP) tests (see more details on these tests in the previous section). For these tests we selected a classical "optimal" lag parameter  $k$  such as:

- $k = \left\lceil \frac{3}{13} \sqrt{n} \right\rceil$  for KPSS test;
- $k = 0$  for LMC test;

- $k = \lceil (n - 1)^{1/3} \rceil$  for ADF test;
- $k = \lceil 4 \left(\frac{n}{100}\right)^{1/4} \rceil$  for PP test;

We also computed the results of V/S test, which is a nonparametric long-memory test (see more details Giraitis *et al.*, 2007). This test is useful when  $d < 0.5$  but it can not really distinguish the stationary case  $d \in (0, 0.5)$  to the nonstationary case  $d \geq 0.5$ .

The results of these simulations with a type I error classically chosen to 0.05 are provided in Tables 5, 6, 7 and 8.

**Conclusions of simulations:** For ARIMA( $p, d, 0$ ) processes with  $d = 0$  or  $d = 1$  (notably AR(1) process when  $d = 0$ ), ADF and PP tests are more accurate than our adaptive MIR tests. This is not really a surprise since those classical tests are unit root tests and are built from ARIMA processes. What is more surprising is that our MIR tests provide better results than KPSS and LMC tests (for LMC only in the case  $d = 1$ ).

In case of ARFIMA or  $X^{(d,1)}$  processes which are stationary long-memory processes when  $0 < d < 0.5$  and nonstationary processes when  $d \geq 0.5$ , all the classical tests are not able to distinguish between the cases  $d = 0$  and  $d = 1$ . Hence, if  $0 < d < 1$ , the asymptotic behaviors of KPSS or LMC tests are the same than for  $d = 0$ : they accept the stationarity assumption  $H_0$ . In contrast, ADF and PP tests accept the nonstationarity assumption  $H'_0$  even if the processes are stationary when  $0 < d < 0.5$ . This is not really a problem with the V/S test since this test is built for distinguishing between short and long memory processes. Conversely, the adaptive MIR tests (especially nonstationarity test  $\tilde{T}_N$ ) which are based on the estimation of the memory parameter are very efficient for distinguishing between the stationary case  $d < 0.5$  and the nonstationary case  $d \geq 0.5$ .

Finally, these simulations show that the adaptive MIR tests (especially nonstationarity test  $\tilde{T}_N$ ) are the best trade-off for detecting the stationarity/nonstationarity of a process.

### 5.3 Application to the the Stocks and the Exchange Rate Markets

We applied the adaptive MIR statistics as well as the other famous long-memory estimators and stationarity tests to Econometric data, the Stocks and Exchange Rate Markets. More precisely, the 5 following daily closing value time series are considered:

1. The USA Dollar Exchange rate in Deusch-Mark, from 11/10/1983 to 08/04/2011 (7174 obs.).
2. The USA Dow Jones Transportation Index, from 31/12/1964 to 08/04/2011 (12072 obs.).
3. The USA Dow Jones Utilities Index, from 31/12/1964 to 08/04/2011 (12072 obs.).
4. The USA Nasdaq Industrials Index, from 05/02/1971 to 08/04/2011 (10481 obs.).
5. The Japan Nikkei225A Index, from 03/04/1950 to 8/04/2011 (15920 obs.).

We considered the log-return of this data and tried to test their stationarity properties. Since stationarity or nonstationarity tests are not able to detect (offline) changes, we first used an algorithm developed by M. Lavielle for detecting changes (this free software can be downloaded from his homepage: <http://www.math.u-psud.fr/~lavielle/programmes-lavielle.html>). This algorithm provides the choice of detecting changes in mean, in variance, ..., and we chose to detect parametric changes in the distribution. Note that the number of changes is also estimated since this algorithm is based on the minimization of a penalized contrast. We obtained for each time series an estimated number of changes equal to 2 which are the following:

- Two breaks points for the US dollar-Deutsch Mark Exchange rate return are estimated, corresponding to the dates: 21/08/2006 and 24/12/2007. The Financial crisis of 2007-2011, followed by the late 2000s recession and the 2010 European sovereign debt crisis can cause such breaks.
- Both the breaks points estimated for the US Dow Jones Transportation Index return, of the New-York Stock Market, correspond to the dates: 17/11/1969 and 15/09/1997. The first break change can be a consequence on transportation companies difficulties the American Viet-Nam war against communist block. The second change point can be viewed as a contagion by the spread of the Thai crisis in 1997 to other countries and mainly the US stock Market.
- Both the breaks points estimated for the US Dow Jones Utilities Index return correspond to the dates: 02/06/1969 and 14/07/1998. The same arguments as above can justify the first break. The second at 1998 is probably a consequence of “*the long very acute crisis in the bond markets,..., the dramatic fiscal crisis and Russian Flight to quality caused by it, may have been warning the largest known by the global financial system: we never went too close to a definitive breakdown of relations between the various financial instruments*“(Wikipedia).
- The two breaks points for the US Nasdaq Industrials Index return correspond to the dates: 17/07/1998 and 27/12/2002. The first break at 1998 is explained by the Russian flight to quality as above. The second break at 2002 corresponds to the Brazilian public debt crisis of 2002 toward foreign owners (mainly the U.S. and the IMF) which implicitly assigns a default of payment probability close to 100% with a direct impact on the financial markets indexes as the Nasdaq.
- Both the breaks points estimated for the Japanese Nikkei225A Index return corresponds to the dates 29/10/1975 and 12/02/1990, perhaps as consequence of the strong dependency of Japan to the middle east Oil following 1974 or anticipating 1990 oil crisis. The credit crunch which is seen as a major factor in the U.S. recession of 1990-91 can play a role in the second break point.

Data and estimated instant breaks can be seen on Figure 1. Then, we applied the estimators and tests described in the previous subsection on trajectories obtained in each stages for the 5 economic time series. These applications were done on the log-returns, their absolute values, their squared values and their  $\theta$ -power laws with  $\theta$  maximized for each LRD estimators. The results of these numerical experiments can be seen in Tables 9-13.

**Conclusions of numerical experiments:** We exhibited again the well known result: the log-returns are stationary and short memory processes while absolute values or power  $\theta$  of log-returns are generally stationary but long memory processes (for this conclusion, we essentially consider the results of  $\tilde{S}_N$ ,  $\tilde{T}_N$  and V/S tests since the other tests have been shown not to be relevant in the cases of long-memory processes). However the last and third estimated stage of each time series provides generally the largest estimated values of the memory parameter  $d$  (for power law of log-returns) which are close to 0.5; hence, for Nasdaq time series, we accepted the nonstationarity assumption.

## 6 Proofs

*Proof of Proposition 1.* This proposition is based on results of Surgailis *et al.* (2008) and was already proved in Bardet et Dola (2012) in the case  $-0.5 < d < 0.5$ .

*Mutatis mutandis*, the case  $0.5 < d < 1.25$  can be treated exactly following the same steps.

The only new proof which has to be established concerns the case  $d = 0.5$  since Surgailis *et al.* (2008) do not provide a CLT satisfied by the (unidimensional) statistic  $IR_N(m)$  in this case. Let  $Y_m(j)$  the standardized

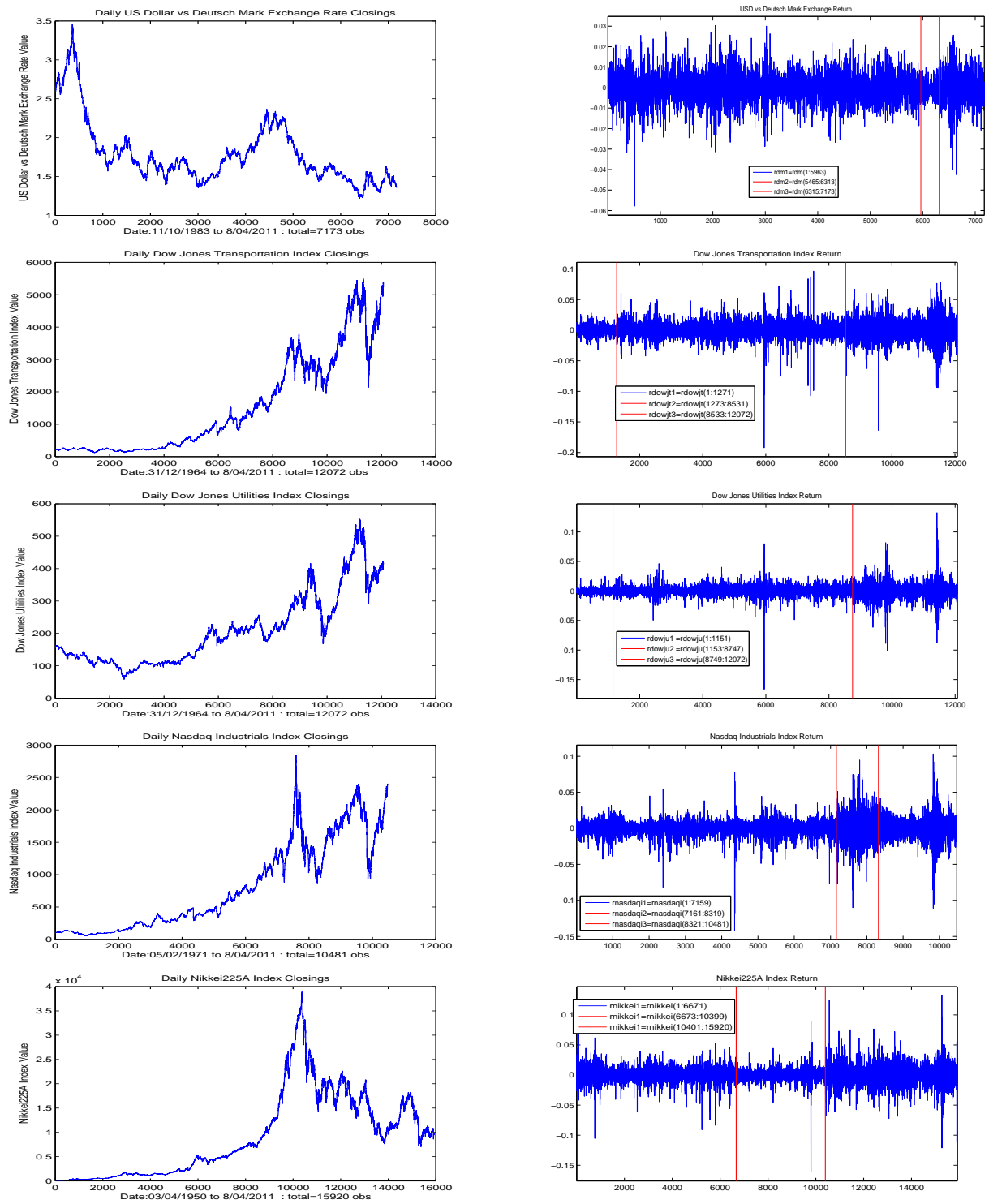


Figure 1: The financial data (DowJonesTransportations, DowJonesUtilities, NasdaqIndustrials, Nikkei225A and US Dollar vs Deutch Mark): original data (left) and log-return with their both estimated breaks instants (right) occurred at the distribution Changes

process defined Surgailis *et al.* (2008). Then, for  $d = 0.5$ ,

$$\forall j \geq 1, \quad |\gamma_m(j)| = |\mathbb{E}(Y_m(j)Y_m(0))| = \frac{2}{V_m^2} \left| \int_0^\pi \cos(jx) x(c_0 + O(x^\beta)) \frac{\sin^4(\frac{mx}{2})}{\sin^4(\frac{x}{2})} dx \right|.$$

Denote  $\gamma_m(j) = \rho_m(j) = \frac{2}{V_m^2}(I_1 + I_2)$  as in (5.39) of Surgailis *et al.* (2008). Both inequalities (5.41) and (5.42) remain true for  $d = 0.5$  and

$$|I_1| \leq C \frac{m^3}{j}, \quad |I_2| \leq C \frac{m^4}{j^2} \quad \implies \quad |I_1 + I_2| \leq C \frac{m^3}{j} \quad \implies \quad |\gamma_m(j)| = |\rho_m(j)| \leq \frac{2}{V_m^2} (|I_1 + I_2|) \leq C \frac{m}{j}.$$

Now let  $\eta_m(j) := \frac{|Y_m(j) + Y_m(j+m)|}{|Y_m(j)| + |Y_m(j+m)|} := \psi(Y_m(j), Y_m(j+m))$ . The Hermite rank of the function  $\psi$  is 2 and therefore the equation (5.23) of Surgailis *et al.* (2008) obtained from Arcones Lemma remains valid. Hence:

$$|\text{Cov}(\eta_m(0), \eta_m(j))| \leq C \frac{m^2}{j^2}$$

from Lemma (8.2) and then the equations (5.28-5.31) remain valid for all  $d \in [0.5, 1.25)$ . Then for  $d = 0.5$ ,

$$\sqrt{\frac{N}{m}} \left( IR_N(m) - \mathbb{E}[IR_N(m)] \right) \xrightarrow[\lfloor N/m \rfloor \wedge m \rightarrow \infty]{\mathcal{L}} \mathcal{N}(0, \sigma^2(0.5)),$$

with  $\sigma^2(0.5) \simeq (0.2524)^2$ . □

*Proof of Property 2.1.* As in Surgailis *et al.* (2008), we can write:

$$\mathbb{E}[IR_N(m)] = \mathbb{E}\left(\frac{|Y^0 + Y^1|}{|Y^0| + |Y^1|}\right) = \Lambda\left(\frac{R_m}{V_m^2}\right) \quad \text{with} \quad \frac{R_m}{V_m^2} := 1 - 2 \frac{\int_0^\pi f(x) \frac{\sin^6(\frac{mx}{2})}{\sin^2(\frac{x}{2})} dx}{\int_0^\pi f(x) \frac{\sin^4(\frac{mx}{2})}{\sin^2(\frac{x}{2})} dx}.$$

Therefore an expansion of  $R_m/V_m^2$  provides an expansion of  $\mathbb{E}[IR_N(m)]$  when  $m \rightarrow \infty$ .

**Step 1** Let  $f$  satisfy Assumption  $IG(d, \beta)$ . Then we are going to establish that there exist positive real numbers  $C_1, C_2$  and  $C_3$  specified in (6.1), (6.2) and (6.3) such that for  $0.5 \leq d < 1.5$  and with  $\rho(d)$  defined in (2.7),

1. if  $\beta < 2d - 1$ ,  $\frac{R_m}{V_m^2} = \rho(d) + C_1(2 - 2d, \beta)m^{-\beta} + O(m^{-2} + m^{-2\beta})$ ;
2. if  $\beta = 2d - 1$ ,  $\frac{R_m}{V_m^2} = \rho(d) + C_2(2 - 2d, \beta)m^{-\beta} + O(m^{-2} + m^{-2-\beta} \log(m) + m^{-2\beta})$ ;
3. if  $2d - 1 < \beta < 2d + 1$ ,  $\frac{R_m}{V_m^2} = \rho(d) + C_3(2 - 2d, \beta)m^{-\beta} + O(m^{-\beta-\epsilon} + m^{-2d-1} \log(m) + m^{-2\beta})$ ;
4. if  $\beta = 2d + 1$ ,  $\frac{R_m}{V_m^2} = \rho(d) + O(m^{-2d-1} \log(m) + m^{-2})$ .

Under Assumption  $IG(d, \beta)$  and with  $J_j(a, m)$  defined in (6.7) in Lemma 6.7, it is clear that,

$$\frac{R_m}{V_m^2} = 1 - 2 \frac{J_6(2 - 2d, m) + \frac{c_1}{c_0} J_6(2 - 2d + \beta, m) + O(J_6(2 - 2d + \beta + \epsilon))}{J_4(2 - 2d, m) + \frac{c_1}{c_0} J_4(2 - 2d + \beta, m) + O(J_4(2 - 2d + \beta + \epsilon))},$$

since  $\int_0^\pi O(x^{2-2d+\beta+\epsilon}) \frac{\sin^j(\frac{mx}{2})}{\sin^2(\frac{x}{2})} dx = O(J_j(2 - 2d + \beta + \epsilon))$ . Now using the results of Lemma 6.7 and constants  $C_{j\ell}, C'_{j\ell}$  and  $C''_{j\ell}$ ,  $j = 4, 6, \ell = 1, 2$  defined in Lemma 6.7,

1. Let  $0 < \beta < 2d - 1 < 2$ , i.e.  $-1 < 2 - 2d + \beta < 1$ . Then

$$\begin{aligned} \frac{R_m}{V_m^2} &= 1 - 2 \frac{C_{61}(2-2d)m^{1+2d} + O(m^{2d-1}) + \frac{c_1}{c_0}C_{61}(2-2d+\beta)m^{1+2d-\beta} + O(m^{2d-1-\beta})}{C_{41}(2-2d)m^{1+2d} + O(m^{2d-1}) + \frac{c_1}{c_0}C_{41}(2-2d+\beta)m^{1+2d-\beta} + O(m^{2d-1-\beta})} \\ &= 1 - \frac{2}{C_{41}(2-2d)} \left[ C_{61}(2-2d) + \frac{c_1}{c_0}C_{61}(2-2d+\beta)m^{-\beta} \right] \left[ 1 - \frac{c_1}{c_0} \frac{C_{41}(2-2d+\beta)}{C_{41}(2-2d)} m^{-\beta} \right] + O(m^{-2}) \\ &= 1 - \frac{2C_{61}(2-2d)}{C_{41}(2-2d)} + 2 \frac{c_1}{c_0} \left[ \frac{C_{61}(2-2d)C_{41}(2-2d+\beta)}{C_{41}(2-2d)C_{41}(2-2d)} - \frac{C_{61}(2-2d+\beta)}{C_{41}(2-2d)} \right] m^{-\beta} + O(m^{-2} + m^{-2\beta}). \end{aligned}$$

As a consequence,,

$$\begin{aligned} \frac{R_m}{V_m^2} &= \rho(d) + C_1(2-2d, \beta) m^{-\beta} + O(m^{-2} + m^{-2\beta}) \quad (m \rightarrow \infty), \quad \text{with } 0 < \beta < 2d - 1 < 2 \text{ and} \\ C_1(2-2d, \beta) &:= 2 \frac{c_1}{c_0} \frac{1}{C_{41}^2(2-2d)} [C_{61}(2-2d)C_{41}(2-2d+\beta) - C_{61}(2-2d+\beta)C_{41}(2-2d)], \quad (6.1) \end{aligned}$$

and numerical experiments proves that  $C_1(2-2d, \beta)/c_1$  is negative for any  $d \in (0.5, 1.5)$  and  $\beta > 0$ .

2. Let  $\beta = 2d - 1$ , i.e.  $2 - 2d + \beta = 1$ . Then,

$$\begin{aligned} \frac{R_m}{V_m^2} &= 1 - 2 \frac{C_{61}(2-2d)m^{1+2d} + O(m^{2d-1}) + \frac{c_1}{c_0}C'_{61}(1)m^{1-2d} + O(\log(m))}{C_{41}(2-2d)m^{1+2d} + O(m^{2d-1}) + \frac{c_1}{c_0}C'_{41}(1)m^{1-2d} + O(\log(m))} \\ &= 1 - \frac{2}{C_{41}(2-2d)} \left[ C_{61}(2-2d) + \frac{c_1}{c_0}C'_{61}(1)m^{1-2d} \right] \left[ 1 - \frac{c_1}{c_0} \frac{C'_{41}(1)}{C_{41}(2-2d)} m^{1-2d} \right] + O(m^{-2} + m^{-2d-1} \log(m)) \\ &= 1 - \frac{2C_{61}(2-2d)}{C_{41}(2-2d)} + 2 \frac{c_1}{c_0} \left[ \frac{C_{61}(2-2d)C'_{41}(1)}{C_{41}(2-2d)C_{41}(2-2d)} - \frac{C'_{61}(1)}{C_{41}(2-2d)} \right] m^{1-2d} + O(m^{-2} + m^{-2d-1} \log(m) + m^{2-4d}). \end{aligned}$$

As a consequence,

$$\begin{aligned} \frac{R_m}{V_m^2} &= \rho(d) + C_2(2-2d, \beta) m^{-\beta} + O(m^{-2} + m^{-2-\beta} \log(m) + m^{-2\beta}) \quad (m \rightarrow \infty), \quad \text{with } 0 < \beta = 2d - 1 < 2 \text{ and} \\ C_2(2-2d, \beta) &:= 2 \frac{c_1}{c_0} \frac{1}{C_{41}^2(2-2d)} [C_{61}(2-2d)C'_{41}(1) - C'_{61}(1)C_{41}(2-2d)], \quad (6.2) \end{aligned}$$

and numerical experiments proves that  $C_2(2-2d, \beta)/c_1$  is negative for any  $d \in [0.5, 1.5)$  and  $\beta > 0$ .

3. Let  $2d - 1 < \beta < 2d + 1$ , i.e.  $1 < 2 - 2d + \beta < 3$ . Then,

$$\begin{aligned} \frac{R_m}{V_m^2} &= 1 - 2 \frac{C_{61}(2-2d)m^{1+2d} + \frac{c_1}{c_0}C'_{61}(2-2d+\beta)m^{1+2d-\beta} + O(m^{1+2d-\beta-\epsilon} + \log(m))}{C_{41}(2-2d)m^{1+2d} + \frac{c_1}{c_0}C'_{41}(2-2d+\beta)m^{1+2d-\beta} + O(m^{1+2d-\beta-\epsilon} + m^{-2d-1} \log(m))} \\ &= 1 - \frac{2}{C_{41}(2-2d)} \left[ C_{61}(2-2d) + \frac{c_1}{c_0}C'_{61}(2-2d+\beta)m^{-\beta} \right] \left[ 1 - \frac{c_1}{c_0} \frac{C'_{41}(2-2d+\beta)}{C_{41}(2-2d)} m^{-\beta} \right] + O(m^{-\beta-\epsilon} + m^{-2d-1} \log(m)) \\ &= 1 - \frac{2C_{61}(2-2d)}{C_{41}(2-2d)} + 2 \frac{c_1}{c_0} \left[ \frac{C_{61}(2-2d)C'_{41}(2-2d+\beta)}{C_{41}(2-2d)C_{41}(2-2d)} - \frac{C'_{61}(2-2d+\beta)}{C_{41}(2-2d)} \right] m^{-\beta} + O(m^{-\beta-\epsilon} + m^{-2d-1} \log(m)). \end{aligned}$$

As a consequence,

$$\begin{aligned} \frac{R_m}{V_m^2} &= \rho(d) + C_3(2-2d, \beta) m^{-\beta} + O(m^{-\beta-\epsilon} + m^{-2d-1} \log(m) + m^{-2\beta}) \quad (m \rightarrow \infty), \quad \text{and} \\ C_3(2-2d, \beta) &:= 2 \frac{c_1}{c_0} \frac{1}{C_{41}^2(2-2d)} [C_{61}(2-2d)C'_{41}(2-2d+\beta) - C'_{61}(2-2d+\beta)C_{41}(2-2d)], \quad (6.3) \end{aligned}$$

and numerical experiments proves that  $C_3(2-2d, \beta)/c_1$  is negative for any  $d \in [0.5, 1.5)$  and  $\beta > 0$ .

4. Let  $\beta = 2d + 1$ . Then, Once again with Lemma 6.7:

$$\begin{aligned} \frac{R_m}{V_m^2} &= 1 - 2 \frac{C_{61}(2-2d)m^{1+2d} + O(m^{2d-1}) + \frac{c_1}{c_0} C'_{62}(3) \log(m) + O(1)}{C_{41}(2-2d)m^{1+2d} + O(m^{2d-1}) + \frac{c_1}{c_0} C'_{42}(3) \log(m) + O(1)} \\ &= 1 - \frac{2}{C_{41}(2-2d)} \left[ C_{61}(2-2d) + \frac{c_1}{c_0} C'_{62}(3) m^{-\beta} \log(m) \right] \left[ 1 - \frac{c_1}{c_0} \frac{C'_{42}(3)}{C_{41}(2-2d)} m^{-\beta} \log(m) \right] + O(m^{-2} + m^{-2d-1}) \\ &= 1 - \frac{2C_{61}(2-2d)}{C_{41}(2-2d)} + 2 \frac{c_1}{c_0} \left[ \frac{C_{61}(2-2d)C'_{42}(3)}{C_{41}(2-2d)C_{41}(2-2d)} - \frac{C'_{62}(3)}{C_{41}(2-2d)} \right] m^{-\beta} \log(m) + O(m^{-2}). \end{aligned}$$

As a consequence,

$$\frac{R_m}{V_m^2} = \rho(d) + O(m^{-2d-1} \log(m) + m^{-2}) \quad (m \rightarrow \infty), \quad \text{with } 2 < \beta = 2d + 1 < 4. \quad (6.4)$$

**Step 2:** A Taylor expansion of  $\Lambda(\cdot)$  around  $\rho(d)$  provides:

$$\Lambda\left(\frac{R_m}{V_m^2}\right) \simeq \Lambda(\rho(d)) + \left[\frac{\partial \Lambda}{\partial \rho}\right](\rho(d)) \left(\frac{R_m}{V_m^2} - \rho(d)\right) + \frac{1}{2} \left[\frac{\partial^2 \Lambda}{\partial \rho^2}\right](\rho(d)) \left(\frac{R_m}{V_m^2} - \rho(d)\right)^2.$$

Note that numerical experiments show that  $\left[\frac{\partial \Lambda}{\partial \rho}\right](\rho) > 0.2$  for any  $\rho \in (-1, 1)$ . As a consequence, using the previous expansions of  $R_m/V_m^2$  obtained in Step 1 and since  $E[IR_N(m)] = \Lambda(R_m/V_m^2)$ , then for all  $0 < \beta \leq 2$ :

$$E[IR_N(m)] = \Lambda_0(d) + \begin{cases} c_1 C'_1(d, \beta) m^{-\beta} + O(m^{-2} + m^{-2\beta}) & \text{if } \beta < 2d - 1 \\ c_1 C'_2(d, \beta) m^{-\beta} + O(m^{-2} + m^{-2-\beta} \log m + m^{-2\beta}) & \text{if } \beta = 2d - 1 \\ c_1 C'_3(d, \beta) m^{-\beta} + O(m^{-\beta-\epsilon} + m^{-2d-1} \log m + m^{-2\beta}) & \text{if } 2d - 1 < \beta < 2d + 1 \\ O(m^{-2d-1} \log m + m^{-2}) & \text{if } \beta = 1 + 2d \end{cases}$$

with  $C'_\ell(d, \beta) = \left[\frac{\partial \Lambda}{\partial \rho}\right](\rho(d)) C_\ell(2-2d, \beta)$  for  $\ell = 1, 2, 3$  and  $C_\ell$  defined in (6.1), (6.2) and (6.3).  $\square$

*Proof of Theorem 1.* Using Property 2.1, if  $m \simeq CN^\alpha$  with  $C > 0$  and  $(1 + 2\beta)^{-1} < \alpha < 1$  then  $\sqrt{N/m} (E[IR_N(m)] - \Lambda_0(d)) \xrightarrow{N \rightarrow \infty} 0$  and it implies that the multidimensional CLT (2.5) can be replaced by

$$\sqrt{\frac{N}{m}} \left( IR_N(m_j) - \Lambda_0(d) \right)_{1 \leq j \leq p} \xrightarrow[N \rightarrow \infty]{\mathcal{L}} \mathcal{N}(0, \Gamma_p(d)). \quad (6.5)$$

It remains to apply the Delta-method with the function  $\Lambda_0^{-1}$  to CLT (6.5). This is possible since the function  $d \rightarrow \Lambda_0(d)$  is an increasing function such that  $\Lambda'_0(d) > 0$  and  $(\Lambda_0^{-1})'(\Lambda_0(d)) = 1/\Lambda'_0(d) > 0$  for all  $d \in (-0.5, 1.5)$ . It achieves the proof of Theorem 1.  $\square$

*Proof of Proposition 2.* See Bardet and Dola (2012).  $\square$

*Proof of Theorem 2.* See Bardet and Dola (2012).  $\square$

## Appendix

We first recall usual equalities frequently used in the sequel:

**Lemma 6.1.** For all  $\lambda > 0$

1. For  $a \in (0, 2)$ ,  $\frac{2}{|\lambda|^{a-1}} \int_0^\infty \frac{\sin(\lambda x)}{x^a} dx = \frac{4a}{2^a |\lambda|^a} \int_0^\infty \frac{\sin^2(\lambda x)}{x^{a+1}} dx = \frac{\pi}{\Gamma(a) \sin(\frac{a\pi}{2})}$ ;
2. For  $b \in (-1, 1)$ ,  $\frac{1}{2^{1-b} - 1} \int_0^\infty \frac{\sin^4(\lambda x)}{x^{4-b}} dx = \frac{16}{-15 + 6 \cdot 2^{3-b} - 3^{3-b}} \times \int_0^\infty \frac{\sin^6(\lambda x)}{x^{4-b}} dx = \frac{2^{3-b} |\lambda|^{3-b} \pi}{4 \Gamma(4-b) \sin(\frac{(1-b)\pi}{2})}$ ;



$$3. \text{ For } b \in (1, 3), \frac{1}{1-2^{1-b}} \int_0^\infty \frac{\sin^4(\lambda x)}{x^{4-b}} dx = \frac{16}{15-6 \cdot 2^{3-b} + 3^{3-b}} \times \int_0^\infty \frac{\sin^6(\lambda x)}{x^{4-b}} dx = \frac{2^{3-b} |\lambda|^{3-b} \pi}{4 \Gamma(4-b) \sin(\frac{(3-b)\pi}{2})}.$$

*Proof.* These equations are given or deduced (using decompositions of  $\sin^j(\cdot)$  and integration by parts) from (see Doukhan *et al.*, p. 31). □

**Lemma 6.2.** For  $j = 4, 6$ , denote

$$J_j(a, m) := \int_0^\pi x^a \frac{\sin^j(\frac{mx}{2})}{\sin^4(\frac{x}{2})} dx. \quad (6.6)$$

Then, we have the following expansions when  $m \rightarrow \infty$ :

$$J_j(a, m) = \begin{cases} C_{j1}(a) m^{3-a} + O(m^{1-a}) & \text{if } -1 < a < 1 \\ C'_{j1}(1) m^{3-a} + O(\log(m)) & \text{if } a = 1 \\ C'_{j1}(a) m^{3-a} + O(1) & \text{if } 1 < a < 3 \\ C'_{j2}(3) \log(m) + O(1) & \text{if } a = 3 \\ C''_{j1}(a) + O(m^{-((a-3)\wedge 2)}) & \text{if } a > 3 \end{cases} \quad (6.7)$$

with the following real constants (which do not vanish for any  $a$  on the corresponding set):

- $C_{41}(a) := \frac{4 \pi(1 - \frac{2^{3-a}}{4})}{(3-a)\Gamma(3-a) \sin(\frac{(3-a)\pi}{2})}$  and  $C_{61}(a) := \frac{\pi(15 - 6 \cdot 2^{3-a} + 3^{3-a})}{4(3-a)\Gamma(3-a) \sin(\frac{(3-a)\pi}{2})}$
- $C'_{41}(a) := \left( \frac{6}{3-a} \mathbf{1}_{\{1 \leq a < 3\}} + 16 \int_0^1 \frac{\sin^4(\frac{y}{2})}{y^{4-a}} dy + 2 \int_1^\infty \frac{1}{y^{4-a}} (-4 \cos(y) + \cos(2y)) dy \right)$   
and  $C'_{61}(a) := \left[ 16 \int_0^1 \frac{\sin^6(\frac{y}{2})}{y^{4-a}} dy + \frac{5}{3-a} \mathbf{1}_{\{1 \leq a < 3\}} + \frac{1}{2} \int_1^\infty \frac{1}{y^{4-a}} (-15 \cos(y) + 6 \cos(2y) - \cos(3y)) dy \right]$
- $C'_{42}(a) := (6 \cdot \mathbf{1}_{\{a=3\}} + \mathbf{1}_{\{a=1\}})$  and  $C'_{62}(a) := (5 \cdot \mathbf{1}_{\{a=3\}} + \frac{5}{6} \cdot \mathbf{1}_{\{a=1\}})$
- $C''_{41}(a) := \frac{3}{8} \int_0^\pi \frac{x^a}{\sin^4(\frac{x}{2})} dx$  and  $C''_{61}(a) := \frac{5}{16} \int_0^\pi \frac{x^a}{\sin^4(\frac{x}{2})} dx$ .

*Proof.* The proof of these expansions follows the steps than those of Lemma 5.1 in Bardet and Dola (2012). Hence we write for  $j = 4, 6$ ,

$$J_j(a, m) = \tilde{J}_j(a, m) + \int_0^\pi x^a \sin^j(\frac{mx}{2}) \frac{1}{(\frac{x}{2})^4} dx + \int_0^\pi x^a \sin^j(\frac{mx}{2}) \frac{2}{3} \frac{1}{(\frac{x}{2})^2} dx \quad (6.8)$$

with

$$\tilde{J}_j(a, m) := \int_0^\pi x^a \sin^j(\frac{mx}{2}) \left( \frac{1}{\sin^4(\frac{x}{2})} - \frac{1}{(\frac{x}{2})^4} - \frac{2}{3} \frac{1}{(\frac{x}{2})^2} \right) dx.$$

The expansions when  $m \rightarrow \infty$  of both the right hand sided integrals in (6.8) are obtained from Lemma 6.1. It remains to obtain the expansion of  $\tilde{J}_j(a, m)$ . Then, using classical trigonometric and Taylor expansions:

$$\begin{aligned} \sin^4\left(\frac{y}{2}\right) &= \frac{1}{8}(3 - 4 \cos(y) + \cos(2y)) \quad \text{and} \quad \frac{1}{\sin^4(y)} - \frac{1}{y^4} - \frac{2}{3} \frac{1}{y^2} \sim \frac{11}{45} \quad (y \rightarrow 0) \\ \sin^6\left(\frac{y}{2}\right) &= \frac{1}{32}(10 - 15 \cos(y) + 6 \cos(2y) - \cos(3y)) \quad \text{and} \quad \frac{1}{y^5} + \frac{1}{3} \frac{1}{y^3} - \frac{\cos(y)}{\sin^5(y)} \sim \frac{31}{945} y \quad (y \rightarrow 0), \end{aligned}$$

the expansions of  $\tilde{J}_j(a, m)$  can be obtained.

Numerical experiments show that  $C''_{41}(a) \neq 0$ ,  $C''_{61}(a) \neq 0$ ,  $C''_{42}(a) \neq 0$  and  $C''_{62}(a) \neq 0$ . □

## References

- [1] Abry, P., Veitch, D. and Flandrin, P. (1998) Long-range dependent: revisiting aggregation with wavelets, *J. Time Ser. Anal.*, 19, 253-266.
- [2] Bardet, J.M., Bibi H. and Jouini, A. (2008) Adaptive wavelet-based estimator of the memory parameter for stationary Gaussian processes, *Bernoulli*, 14, 691-724.
- [3] Bardet, J.M. and Dola B. (2012) Adaptive estimator of the memory parameter and goodness-of-fit test using a multidimensional increment ratio statistic, *Journal of Multivariate Analysis*, 105, 222-240.
- [4] Bardet J.M. and Surgailis, D. (2011) Measuring the roughness of random paths by increment ratios, *Bernoulli*, 17, 749-780.
- [5] Beran, J. (1994) *Statistics for Long-Memory Processes*, Chapman and Hall, New York.
- [6] Doukhan, P., Oppenheim, G. and Taqqu M.S. (Editors) (2003) *Theory and applications of long-range dependence*, Birkhäuser.
- [7] Elder, J. and Kennedy, P.E. (2001) Testing for Unit Roots : What Should Students Be Taught? *Journal of Economic Education*, 32, 137-146.
- [8] Giraitis, L., Kokoszka, P., Leipus, R. and Teyssière, G. (2003) Rescaled variance and related tests for long memory in volatility and levels, *J. Econometrics*, 112, 265-294.
- [9] Giraitis, L., Robinson P.M., and Samarov, A. (1997) Rate optimal semi-parametric estimation of the memory parameter of the Gaussian time series with long range dependence, *J. Time Ser. Anal.*, 18, 49-61.
- [10] Hamilton, J.D. (1994) *Time Series Analysis*, Princeton University Press, Princeton, New Jersey.
- [11] Hurvich, C.M. and Ray, B.K. (1995) Estimation of the Memory Parameter for Nonstationary or Non-invertible Fractionally Integrated Processes, *Journal of Time Series Analysis*, 16, 17-41.
- [12] Hurvich, C.M. and Chen, W.W. (2000) An Efficient Taper for Potentially Overdifferenced Long-Memory Time Series, *Journal of Time Series Analysis*, 21, 155-180.
- [13] Ling, S. and Li, W.K., (2001) Asymptotic Inference for nonstationary fractionally integrated autoregressive moving-average models, *Econometric Theory*, 17, 738-765.
- [14] Ling, S. (2003) Adaptive estimators and tests of stationary and non-stationary short and long memory ARIMA-GARCH models, *J. Amer. Statist. Assoc.*, 92, 1184-1192.
- [15] Moulines, E., Roueff, F. and Taqqu, M.S. (2007) On the spectral density of the wavelet coefficients of long memory time series with application to the log-regression estimation of the memory parameter, *J. Time Ser. Anal.*, 28, 155-187.
- [16] Moulines, E. and Soulier, P. (2003) Semiparametric spectral estimation for fractionnal processes, In P. Doukhan, G. Openheim and M.S. Taqqu editors, *Theory and applications of long-range dependence*, 251-301, Birkhäuser, Boston.
- [17] Nielsen, M.O. (2004) Efficient Likelihood Inference in Nonstationary Univariate Models, *Econometric Theory*, 20, 116-146.
- [18] Phillips, P.C.B and Shimotsu, K. (2004) Local Whittle in Nonstationary and Unit Root Cases, *The Annals of Statistics*, 32, 656-692.

- [19] Phillips, P.C.B and Shimotsu, K. (2005) The Exact Local Whittle Estimation of Fractional Integration, *The Annals of Statistics*, 33, 1890-1933.
- [20] Robinson, P.M. (1994) Efficient Tests of Nonstationary Hypotheses, *Journal of the American Statistical Association*, 89, 1420-37.
- [21] Robinson, P.M. (1995a) Log-periodogram regression of time series with long range dependence, *The Annals of statistics*, 23, 1048-1072.
- [22] Robinson, P.M. (1995b) Gaussian semiparametric estimation of long range dependence, *The Annals of statistics*, 23, 1630-1661.
- [23] Surgailis, D., Teyssière, G. and Vaičiulis, M. (2008) The increment ratio statistic. *J. Multiv. Anal.*, 99, 510-541.
- [24] Tanaka, K. (1999) The Nonstationary Fractional Unit Root, *Econometric Theory*, 15, 549-582.
- [25] Veitch, D., Abry, P. and Taqqu, M.S. (2003) On the Automatic Selection of the Onset of Scaling, *Fractals*, 11, 377-390.
- [26] Velasco, C. (1999a) Non-stationary log-periodogram regression, *Journal of Econometrics*, 91, 325-371.
- [27] Velasco, C. (1999b) Gaussian Semiparametric Estimation of Non-stationary Time Series, *Journal of Time Series Analysis*, 20, 87-127.
- [28] Velasco, C. and Robinson, P. (2000) Whittle pseudo-maximum likelihood estimation for nonstationary time series. *J. Am. Statist. Assoc.*, 95, 1229-1243.

$N = 200$	$d = 0$	$d = 0$	$d = 0$	$d = 0$	$d = 1$	$d = 1$	$d = 1$	$d = 1$
ARIMA(1, d, 0)	$\phi=-0.7$	$\phi=-0.8$	$\phi=-0.9$	$\phi=-0.95$	$\phi=-1$	$\phi=-1.05$	$\phi=-1.1$	$\phi=-1.2$
mean $\tilde{d}_N^{(IR)}$	0.375	0.518	0.717	0.822	0.964	0.976	0.980	1.008
$\sqrt{MSE} \tilde{d}_N^{(IR)}$	0.399	0.536	0.729	0.833	<b>0.135*</b>	<b>0.129*</b>	<b>0.134*</b>	<b>0.127*</b>
mean $\tilde{d}_N^{(MS)}$	0.244	0.426	0.673	0.858	1.057	1.075	1.069	1.083
$\sqrt{MSE} \tilde{d}_N^{(MS)}$	<b>0.286*</b>	0.451	0.689	0.875	0.173	0.178	0.179	0.189
mean $\tilde{d}_N^{(ROB)}$	0.003	0.124	0.312	0.623	0.946	0.934	0.977	0.947
$\sqrt{MSE} \tilde{d}_N^{(ROB)}$	0.361	<b>0.380*</b>	<b>0.519*</b>	<b>0.739*</b>	0.344	0.349	0.314	0.332
mean $\tilde{d}_N^{(WAV)}$	0.461	0.600	0.747	0.831	0.902	0.925	0.933	0.968
$\sqrt{MSE} \tilde{d}_N^{(WAV)}$	0.491	0.615	0.756	0.843	0.175	0.163	0.162	0.159

$N = 500$	$d = 0$	$d = 0$	$d = 0$	$d = 0$	$d = 1$	$d = 1$	$d = 1$	$d = 1$
ARIMA(1, d, 0)	$\phi=-0.7$	$\phi=-0.8$	$\phi=-0.9$	$\phi=-0.95$	$\phi=-1$	$\phi=-1.05$	$\phi=-1.1$	$\phi=-1.2$
mean $\tilde{d}_N^{(IR)}$	0.232	0.355	0.629	0.804	0.980	0.981	0.976	0.995
$\sqrt{MSE} \tilde{d}_N^{(IR)}$	0.279	0.400	0.649	0.811	<b>0.103*</b>	<b>0.101*</b>	<b>0.094*</b>	<b>0.104*</b>
mean $\tilde{d}_N^{(MS)}$	0.068	0.157	0.390	0.644	1.057	1.057	1.055	1.060
$\sqrt{MSE} \tilde{d}_N^{(MS)}$	<b>0.154*</b>	0.212	0.412	0.659	0.174	0.164	0.171	0.174
mean $\tilde{d}_N^{(ROB)}$	0.044	0.092	0.275	0.560	0.976	0.969	0.976	0.973
$\sqrt{MSE} \tilde{d}_N^{(ROB)}$	0.176	<b>0.209*</b>	<b>0.321*</b>	<b>0.589*</b>	0.164	0.159	0.169	0.163
mean $\tilde{d}_N^{(WAV)}$	0.291	0.442	0.679	0.818	0.940	0.944	0.948	0.979
$\sqrt{MSE} \tilde{d}_N^{(WAV)}$	0.337	0.479	0.694	0.825	0.118	0.116	0.108	0.106

$N = 1000$	$d = 0$	$d = 0$	$d = 0$	$d = 0$	$d = 1$	$d = 1$	$d = 1$	$d = 1$
ARIMA(1, d, 0)	$\phi=-0.7$	$\phi=-0.8$	$\phi=-0.9$	$\phi=-0.95$	$\phi=-1$	$\phi=-1.05$	$\phi=-1.1$	$\phi=-1.2$
mean $\tilde{d}_N^{(IR)}$	0.171	0.284	0.579	0.774	0.975	0.981	0.994	0.995
$\sqrt{MSE} \tilde{d}_N^{(IR)}$	0.221	0.338	0.607	0.784	<b>0.074*</b>	<b>0.073*</b>	<b>0.067*</b>	<b>0.073*</b>
mean $\tilde{d}_N^{(MS)}$	0.057	0.137	0.340	0.574	1.027	1.031	1.029	1.031
$\sqrt{MSE} \tilde{d}_N^{(MS)}$	<b>0.108*</b>	0.162	0.351	0.580	0.103	0.103	0.102	0.099
mean $\tilde{d}_N^{(ROB)}$	0.035	0.091	0.266	0.515	0.987	0.994	0.998	0.987
$\sqrt{MSE} \tilde{d}_N^{(ROB)}$	0.112	<b>0.146*</b>	<b>0.289*</b>	<b>0.528*</b>	0.096	0.100	0.102	0.095
mean $\tilde{d}_N^{(WAV)}$	0.165	0.252	0.424	0.663	0.949	0.958	0.963	0.976
$\sqrt{MSE} \tilde{d}_N^{(WAV)}$	0.237	0.306	0.467	0.689	0.090	0.092	0.097	0.090

$N = 5000$	$d = 0$	$d = 0$	$d = 0$	$d = 0$	$d = 1$	$d = 1$	$d = 1$	$d = 1$
ARFIMA(1, d, 0)	$\phi=-0.7$	$\phi=-0.8$	$\phi=-0.9$	$\phi=-0.95$	$\phi=-1$	$\phi=-1.05$	$\phi=-1.1$	$\phi=-1.2$
mean $\tilde{d}_N^{(IR)}$	0.064	0.083	0.212	0.661	0.989	0.989	0.996	1.003
$\sqrt{MSE} \tilde{d}_N^{(IR)}$	0.100	0.131	0.303	0.714	<b>0.034*</b>	<b>0.035*</b>	<b>0.032*</b>	0.036
mean $\tilde{d}_N^{(MS)}$	0.014	0.061	0.219	0.423	1.006	1.002	1.007	1.005
$\sqrt{MSE} \tilde{d}_N^{(MS)}$	<b>0.042*</b>	<b>0.075*</b>	0.224	0.426	0.044	0.041	0.045	0.041
mean $\tilde{d}_N^{(ROB)}$	0.034	0.080	0.243	0.479	0.997	0.997	0.997	0.999
$\sqrt{MSE} \tilde{d}_N^{(ROB)}$	0.053	0.090	0.247	0.481	0.038	0.036	0.037	<b>0.034*</b>
mean $\tilde{d}_N^{(WAV)}$	0.031	0.045	0.047	0.167	0.980	0.982	0.977	1
$\sqrt{MSE} \tilde{d}_N^{(WAV)}$	0.136	0.134	<b>0.151*</b>	<b>0.212*</b>	0.083	0.071	0.099	0.067

Table 1: : Comparison between  $\tilde{d}_N^{(IR)}$  and other famous semiparametric estimators of  $d$  ( $\tilde{d}_N^{(MS)}$ ,  $\tilde{d}_N^{(ROB)}$  and  $\tilde{d}_N^{(WAV)}$ ) applied to ARIMA(1, d, 0) process ( $X_t + \phi X_{t-1} = \varepsilon_t$ ), with several  $\phi$  and  $N$  values

$N = 200$ ARFIMA(0,d,0)	$d = -0.4$	$d = -0.2$	$d = 0$	$d = 0.2$	$d = 0.4$	$d = 0.5$	$d = .6$	$d = 0.8$	$d = 1$	$d = 1.2$
mean $\tilde{d}_N^{(IR)}$	-0.267	-0.134	0.024	0.183	0.365	0.467	0.567	0.770	0.971	1.179
$\sqrt{MSE} \tilde{d}_N^{(IR)}$	0.164	0.131	0.115	0.135	<b>0.122*</b>	<b>0.115*</b>	<b>0.129*</b>	<b>0.124*</b>	<b>0.139*</b>	<b>0.133*</b>
mean $\tilde{d}_N^{(MS)}$	-0.354	-0.170	0.008	0.201	0.403	0.536	0.644	0.883	1.078	1.181
$\sqrt{MSE} \tilde{d}_N^{(MS)}$	0.166	0.151	0.144	0.163	0.152	0.151	0.168	0.192	0.188	0.167
mean $\tilde{d}_N^{(ROB)}$	-0.310	-0.159	-0.012	0.201	0.357	0.476	0.604	0.781	0.984	1.065
$\sqrt{MSE} \tilde{d}_N^{(ROB)}$	0.261	0.301	0.361	0.382	0.411	0.368	0.374	0.369	0.361	0.319
mean $\tilde{d}_N^{(WAV)}$	-0.408	-0.229	-0.040	0.143	0.352	0.447	0.531	0.715	0.915	1.091
$\sqrt{MSE} \tilde{d}_N^{(WAV)}$	<b>0.094*</b>	<b>0.107*</b>	<b>0.101*</b>	<b>0.120</b>	0.124	0.135	0.144	0.160	0.167	0.201

$N = 500$ ARFIMA(0,d,0)	$d = -0.4$	$d = -0.2$	$d = 0$	$d = 0.2$	$d = 0.4$	$d = 0.5$	$d = .6$	$d = 0.8$	$d = 1$	$d = 1.2$
mean $\tilde{d}_N^{(IR)}$	-0.287	-0.163	-0.007	0.187	0.379	0.464	0.558	0.778	0.963	1.180
$\sqrt{MSE} \tilde{d}_N^{(IR)}$	0.135	0.089	0.092	0.096	<b>0.094*</b>	<b>0.100*</b>	<b>0.100*</b>	<b>0.100*</b>	<b>0.111*</b>	<b>0.114*</b>
mean $\tilde{d}_N^{(MS)}$	-0.344	-0.181	0.001	0.209	0.411	0.522	0.636	0.870	1.034	1.158
$\sqrt{MSE} \tilde{d}_N^{(MS)}$	0.157	0.144	0.135	0.141	0.158	0.154	0.168	0.183	0.173	0.172
mean $\tilde{d}_N^{(ROB)}$	-0.344	-0.206	-0.029	0.196	0.376	0.486	0.596	0.799	0.956	1.058
$\sqrt{MSE} \tilde{d}_N^{(ROB)}$	0.146	0.174	0.164	0.172	0.190	0.182	0.187	0.176	0.168	0.214
mean $\tilde{d}_N^{(WAV)}$	-0.403	-0.218	-0.027	0.166	0.356	0.447	0.537	0.753	0.928	1.134
$\sqrt{MSE} \tilde{d}_N^{(WAV)}$	<b>0.065*</b>	<b>0.063*</b>	<b>0.067*</b>	<b>0.080*</b>	0.107	0.107	0.108	0.109	0.124	0.137

$N = 1000$ ARFIMA(0,d,0)	$d = -0.4$	$d = -0.2$	$d = 0$	$d = 0.2$	$d = 0.4$	$d = 0.5$	$d = .6$	$d = 0.8$	$d = 1$	$d = 1.2$
mean $\tilde{d}_N^{(IR)}$	-0.311	-0.170	-0.001	0.181	0.374	0.476	0.575	0.774	0.973	1.181
$\sqrt{MSE} \tilde{d}_N^{(IR)}$	0.105	0.065	0.063	<b>0.059*</b>	<b>0.065*</b>	<b>0.068*</b>	<b>0.070*</b>	<b>0.075*</b>	<b>0.074*</b>	<b>0.079*</b>
mean $\tilde{d}_N^{(MS)}$	-0.360	-0.183	-0.004	0.200	0.398	0.506	0.628	0.843	1.018	1.116
$\sqrt{MSE} \tilde{d}_N^{(MS)}$	0.106	0.092	0.086	0.090	0.090	0.092	0.108	0.109	0.106	0.129
mean $\tilde{d}_N^{(ROB)}$	-0.380	-0.204	-0.012	0.192	0.388	0.501	0.617	0.811	0.982	1.075
$\sqrt{MSE} \tilde{d}_N^{(ROB)}$	0.097	0.115	0.112	0.106	0.113	0.107	0.123	0.105	0.104	0.156
mean $\tilde{d}_N^{(WAV)}$	-0.407	-0.213	-0.026	0.164	0.357	0.460	0.550	0.761	0.938	1.137
$\sqrt{MSE} \tilde{d}_N^{(WAV)}$	<b>0.059*</b>	<b>0.050*</b>	<b>0.052*</b>	0.067	0.090	0.088	0.095	0.089	0.114	0.103

$N = 5000$ ARFIMA(0,d,0)	$d = -0.4$	$d = -0.2$	$d = 0$	$d = 0.2$	$d = 0.4$	$d = 0.5$	$d = .6$	$d = 0.8$	$d = 1$	$d = 1.2$
mean $\tilde{d}_N^{(IR)}$	-0.339	-0.177	-0.003	0.189	0.386	0.483	0.589	0.786	0.984	1.199
$\sqrt{MSE} \tilde{d}_N^{(IR)}$	0.070	<b>0.040*</b>	<b>0.031*</b>	<b>0.033*</b>	<b>0.035*</b>	<b>0.035*</b>	<b>0.035*</b>	<b>0.035*</b>	0.042	<b>0.052*</b>
mean $\tilde{d}_N^{(MS)}$	-0.385	-0.195	0.001	0.197	0.400	0.502	0.612	0.825	1.006	1.078
$\sqrt{MSE} \tilde{d}_N^{(MS)}$	0.043	0.044	0.044	0.042	0.043	0.044	0.051	0.059	0.043	0.142
mean $\tilde{d}_N^{(ROB)}$	-0.395	-0.203	-0.002	0.197	0.402	0.504	0.609	0.820	0.997	1.070
$\sqrt{MSE} \tilde{d}_N^{(ROB)}$	<b>0.042*</b>	0.043	0.042	0.041	0.041	0.040	0.045	0.051	<b>0.035*</b>	0.147
mean $\tilde{d}_N^{(WAV)}$	-0.416	-0.210	-0.025	0.175	0.372	0.476	0.575	0.782	0.979	1.171
$\sqrt{MSE} \tilde{d}_N^{(WAV)}$	0.080	0.055	0.083	0.078	0.082	0.074	0.086	0.068	0.083	0.103

Table 2: : Comparison between  $\tilde{d}_N^{(IR)}$  and other famous semiparametric estimators of  $d$  ( $\tilde{d}_N^{(MS)}$ ,  $\tilde{d}_N^{(ROB)}$  and  $\tilde{d}_N^{(WAV)}$ ) applied to ARFIMA(0,  $d$ , 0) process, with several  $d$  and  $N$  values

$N = 200$ ARFIMA(1,d,1) $\phi = -0.3 ; \theta = 0.7$	$d = -0.4$	$d = -0.2$	$d = 0$	$d = 0.2$	$d = 0.4$	$d = 0.5$	$0d = .6$	$d = 0.8$	$d = 1$	$d = 1.2$
mean $\tilde{d}_N^{(IR)}$	-0.154	-0.009	0.151	0.310	0.476	0.576	0.669	0.861	1.051	1.234
$\sqrt{MSE} \tilde{d}_N^{(IR)}$	0.273	0.231	0.197	<b>0.176*</b>	<b>0.150*</b>	<b>0.147*</b>	<b>0.146*</b>	<b>0.137*</b>	<b>0.143*</b>	<b>0.129*</b>
mean $\tilde{d}_N^{(MS)}$	-0.241	-0.055	0.124	0.313	0.503	0.627	0.719	0.925	1.104	1.196
$\sqrt{MSE} \tilde{d}_N^{(MS)}$	<b>0.223*</b>	<b>0.208*</b>	<b>0.190*</b>	0.200	0.183	0.197	0.202	0.215	0.199	0.169
mean $\tilde{d}_N^{(ROB)}$	-0.312	-0.152	-0.006	0.210	0.364	0.483	0.610	0.787	0.988	1.068
$\sqrt{MSE} \tilde{d}_N^{(ROB)}$	0.259	0.304	0.361	0.383	0.411	0.368	0.375	0.368	0.360	0.317
mean $\tilde{d}_N^{(WAV)}$	-0.199	-0.012	0.182	0.364	0.561	0.635	0.731	0.890	1.039	1.183
$\sqrt{MSE} \tilde{d}_N^{(WAV)}$	0.253	0.236	0.232	0.232	0.214	0.203	0.195	0.184	0.157	0.168

$N = 500$ ARFIMA(1,d,1) $\phi = -0.3 ; \theta = 0.7$	$d = -0.4$	$d = -0.2$	$d = 0$	$d = 0.2$	$d = 0.4$	$d = 0.5$	$0d = .6$	$d = 0.8$	$d = 1$	$d = 1.2$
mean $\tilde{d}_N^{(IR)}$	-0.216	-0.090	0.062	0.255	0.435	0.529	0.617	0.827	0.999	1.214
$\sqrt{MSE} \tilde{d}_N^{(IR)}$	0.204	0.147	<b>0.122*</b>	<b>0.128*</b>	<b>0.118*</b>	<b>0.116*</b>	<b>0.114*</b>	<b>0.114*</b>	0.1161	<b>0.113*</b>
mean $\tilde{d}_N^{(MS)}$	-0.363	-0.197	-0.015	0.194	0.398	0.511	0.626	0.866	1.036	1.160
$\sqrt{MSE} \tilde{d}_N^{(MS)}$	0.149	<b>0.144*</b>	0.135	0.141	0.158	0.153	0.165	0.182	0.172	0.171
mean $\tilde{d}_N^{(ROB)}$	-0.346	-0.203	-0.022	0.202	0.382	0.492	0.602	0.804	0.959	1.060
$\sqrt{MSE} \tilde{d}_N^{(ROB)}$	<b>0.1450*</b>	0.175	0.162	0.172	0.189	0.182	0.187	0.177	0.167	0.212
mean $\tilde{d}_N^{(WAV)}$	-0.292	-0.090	0.093	0.303	0.502	0.579	0.679	0.864	1.017	1.190
$\sqrt{MSE} \tilde{d}_N^{(WAV)}$	0.170	0.169	0.157	0.158	0.164	0.157	0.151	0.142	<b>0.112*</b>	0.121

$N = 1000$ ARFIMA(1,d,1) $\phi = -0.3 ; \theta = 0.7$	$d = -0.4$	$d = -0.2$	$d = 0$	$d = 0.2$	$d = 0.4$	$d = 0.5$	$0d = .6$	$d = 0.8$	$d = 1$	$d = 1.2$
mean $\tilde{d}_N^{(IR)}$	-0.245	-0.110	0.055	0.237	0.425	0.528	0.628	0.815	1.005	1.212
$\sqrt{MSE} \tilde{d}_N^{(IR)}$	0.166	0.121	0.104	0.095	<b>0.091*</b>	<b>0.091*</b>	<b>0.092*</b>	<b>0.093*</b>	<b>0.090*</b>	<b>0.086*</b>
mean $\tilde{d}_N^{(MS)}$	-0.376	-0.197	-0.018	0.186	0.386	0.495	0.619	0.840	1.017	1.117
$\sqrt{MSE} \tilde{d}_N^{(MS)}$	0.099	<b>0.090*</b>	<b>0.088*</b>	<b>0.091*</b>	0.092	0.093	0.108	0.108	0.105	0.129
mean $\tilde{d}_N^{(ROB)}$	-0.379	-0.199	-0.007	0.197	0.393	0.507	0.622	0.815	0.986	1.076
$\sqrt{MSE} \tilde{d}_N^{(ROB)}$	<b>0.096*</b>	0.116	0.111	0.105	0.112	0.107	0.124	0.105	0.103	0.155
mean $\tilde{d}_N^{(WAV)}$	-0.334	-0.136	0.046	0.247	0.459	0.555	0.645	0.837	1.006	1.183
$\sqrt{MSE} \tilde{d}_N^{(WAV)}$	0.134	0.129	0.129	0.126	0.132	0.137	0.128	0.126	0.103	0.099

$N = 5000$ ARFIMA(1,d,1) $\phi = -0.3 ; \theta = 0.7$	$d = -0.4$	$d = -0.2$	$d = 0$	$d = 0.2$	$d = 0.4$	$d = 0.5$	$0d = .6$	$d = 0.8$	$d = 1$	$d = 1.2$
mean $\tilde{d}_N^{(IR)}$	-0.298	-0.143	0.037	0.226	0.423	0.523	0.621	0.813	1.005	1.219
$\sqrt{MSE} \tilde{d}_N^{(IR)}$	0.111	0.075	0.064	0.062	0.058	0.051	0.051	<b>0.048*</b>	0.054	<b>0.063*</b>
mean $\tilde{d}_N^{(MS)}$	-0.391	-0.200	-0.004	0.192	0.396	0.498	0.609	0.824	1.006	1.078
$\sqrt{MSE} \tilde{d}_N^{(MS)}$	<b>0.042*</b>	0.044	0.044	0.043	0.043	0.044	0.051	0.059	0.043	0.142
mean $\tilde{d}_N^{(ROB)}$	-0.392	-0.198	0.003	0.201	0.407	0.509	0.613	0.825	1.002	1.072
$\sqrt{MSE} \tilde{d}_N^{(ROB)}$	0.042	<b>0.043*</b>	<b>0.042*</b>	<b>0.041*</b>	<b>0.042*</b>	<b>0.041*</b>	<b>0.046*</b>	0.053	<b>0.035*</b>	0.146
mean $\tilde{d}_N^{(WAV)}$	-0.396	-0.187	0.003	0.196	0.405	0.519	0.605	0.818	1.014	1.192
$\sqrt{MSE} \tilde{d}_N^{(WAV)}$	0.085	0.094	0.097	0.107	0.110	0.100	0.124	0.102	0.107	0.101

Table 3: : Comparison between  $\tilde{d}_N^{(IR)}$  and other famous semiparametric estimators of  $d$  ( $\tilde{d}_N^{(MS)}$ ,  $\tilde{d}_N^{(ROB)}$  and  $\tilde{d}_N^{(WAV)}$ ) applied to ARFIMA(1,  $d$ , 1) process (with  $\phi = -0.3$  and  $\theta = 0.7$ ), with several  $d$  and  $N$  values.

$N = 200$ $X^{(d,1)}$	$d = -0.4$	$d = -0.2$	$d = 0$	$d = 0.2$	$d = 0.4$	$d = 0.5$	$0d = .6$	$d = 0.8$	$d = 1$	$d = 1.2$
mean $\tilde{d}_N^{(IR)}$	-0.328	-0.221	-0.097	0.080	0.250	0.320	0.435	0.623	0.852	1.021
$\sqrt{MSE} \tilde{d}_N^{(IR)}$	<b>0.104*</b>	<b>0.107*</b>	<b>0.155*</b>	<b>0.173*</b>	0.194	0.219	0.212	0.223	0.194	0.224
mean $\tilde{d}_N^{(MS)}$	-0.455	-0.266	0.080	0.122	0.320	0.409	0.527	0.733	0.990	1.219
$\sqrt{MSE} \tilde{d}_N^{(MS)}$	0.165	0.172	0.173	0.173	<b>0.172*</b>	<b>0.183*</b>	<b>0.178*</b>	<b>0.191*</b>	<b>0.185*</b>	<b>0.183*</b>
mean $\tilde{d}_N^{(ROB)}$	-0.322	-0.236	-0.054	0.118	0.330	0.411	0.494	0.727	0.944	1.120
$\sqrt{MSE} \tilde{d}_N^{(ROB)}$	0.251	0.277	0.339	0.362	0.393	0.381	0.396	0.376	0.402	0.328
mean $\tilde{d}_N^{(WAV)}$	-0.636	-0.424	-0.228	-0.014	0.184	0.253	0.358	0.552	0.780	0.992
$\sqrt{MSE} \tilde{d}_N^{(WAV)}$	0.259	0.254	0.254	0.246	0.244	0.283	0.279	0.285	0.266	0.251

$N = 500$ $X^{(d,1)}$	$d = -0.4$	$d = -0.2$	$d = 0$	$d = 0.2$	$d = 0.4$	$d = 0.5$	$0d = .6$	$d = 0.8$	$d = 1$	$d = 1.2$
mean $\tilde{d}_N^{(IR)}$	-0.358	-0.257	-0.096	0.087	0.275	0.376	0.470	0.677	0.888	1.079
$\sqrt{MSE} \tilde{d}_N^{(IR)}$	<b>0.074*</b>	<b>0.092*</b>	<b>0.129*</b>	0.153	0.161	0.161	0.167	<b>0.167*</b>	<b>0.154*</b>	<b>0.162*</b>
mean $\tilde{d}_N^{(MS)}$	-0.373	-0.221	-0.045	0.167	0.363	0.480	0.571	0.789	1.023	1.265
$\sqrt{MSE} \tilde{d}_N^{(MS)}$	0.163	0.134	0.150	<b>0.131*</b>	<b>0.148*</b>	<b>0.146*</b>	<b>0.157*</b>	0.175	0.173	0.204
mean $\tilde{d}_N^{(ROB)}$	-0.408	-0.247	-0.071	0.170	0.351	0.454	0.547	0.742	0.9530	1.1573
$\sqrt{MSE} \tilde{d}_N^{(ROB)}$	0.113	0.162	0.185	0.159	0.178	0.188	0.184	0.189	0.182	0.188
mean $\tilde{d}_N^{(WAV)}$	-0.593	-0.387	-0.188	0.030	0.233	0.339	0.430	0.633	0.8380	1.0589
$\sqrt{MSE} \tilde{d}_N^{(WAV)}$	0.214	0.207	0.208	0.196	0.199	0.196	0.203	0.196	0.199	0.183

$N = 1000$ $X^{(d,1)}$	$d = -0.4$	$d = -0.2$	$d = 0$	$d = 0.2$	$d = 0.4$	$d = 0.5$	$0d = .6$	$d = 0.8$	$d = 1$	$d = 1.2$
mean $\tilde{d}_N^{(IR)}$	-0.382	-0.253	-0.096	0.081	0.296	0.376	0.485	0.686	0.8912	1.0898
$\sqrt{MSE} \tilde{d}_N^{(IR)}$	<b>0.044*</b>	<b>0.081*</b>	0.120	0.138	0.127	0.148	0.137	0.140	0.134	0.132
mean $\tilde{d}_N^{(MS)}$	-0.409	-0.221	-0.035	0.149	0.361	0.466	0.565	0.775	0.996	1.219
$\sqrt{MSE} \tilde{d}_N^{(MS)}$	0.092	0.093	<b>0.101*</b>	<b>0.107*</b>	<b>0.103*</b>	<b>0.102*</b>	<b>0.103*</b>	<b>0.111*</b>	<b>0.105*</b>	0.122
mean $\tilde{d}_N^{(ROB)}$	-0.420	-0.244	-0.037	0.150	0.358	0.459	0.562	0.754	0.959	1.164
$\sqrt{MSE} \tilde{d}_N^{(ROB)}$	0.077	0.110	0.110	0.125	0.119	0.117	0.120	0.128	0.112	<b>0.119*</b>
mean $\tilde{d}_N^{(WAV)}$	-0.564	-0.350	-0.152	0.051	0.263	0.363	0.478	0.674	0.875	1.089
$\sqrt{MSE} \tilde{d}_N^{(WAV)}$	0.182	0.173	0.176	0.172	0.164	0.169	0.160	0.163	0.161	0.150

$N = 5000$ $X^{(d,1)}$	$d = -0.4$	$d = -0.2$	$d = 0$	$d = 0.2$	$d = 0.4$	$d = 0.5$	$0d = .6$	$d = 0.8$	$d = 1$	$d = 1.2$
mean $\tilde{d}_N^{(IR)}$	-0.392	-0.257	-0.089	0.110	0.324	0.417	0.533	0.730	0.939	1.138
$\sqrt{MSE} \tilde{d}_N^{(IR)}$	<b>0.028*</b>	0.068	0.100	0.102	0.091	0.099	0.087	0.085	0.078	0.080
mean $\tilde{d}_N^{(MS)}$	-0.409	-0.216	-0.022	0.175	0.374	0.473	0.577	0.779	0.983	1.190
$\sqrt{MSE} \tilde{d}_N^{(MS)}$	0.047	<b>0.046*</b>	<b>0.048*</b>	<b>0.051*</b>	<b>0.051*</b>	0.056	0.050	0.052	<b>0.048*</b>	0.052
mean $\tilde{d}_N^{(ROB)}$	-0.426	-0.225	-0.029	0.172	0.372	0.469	0.574	0.773	0.969	1.173
$\sqrt{MSE} \tilde{d}_N^{(ROB)}$	0.048	0.049	0.052	0.054	0.052	<b>0.056*</b>	<b>0.050*</b>	<b>0.049*</b>	0.053	<b>0.051*</b>
mean $\tilde{d}_N^{(WAV)}$	-0.493	-0.293	-0.093	0.111	0.314	0.419	0.512	0.723	0.931	1.133
$\sqrt{MSE} \tilde{d}_N^{(WAV)}$	0.116	0.118	0.110	0.116	0.118	0.117	0.137	0.105	0.102	0.109

Table 4: : Comparison between  $\tilde{d}_N^{(IR)}$  and other famous semiparametric estimators of  $d$  ( $\tilde{d}_N^{(MS)}$ ,  $\tilde{d}_N^{(ROB)}$  and  $\tilde{d}_N^{(WAV)}$ ) applied to  $X^{(d,1)}$  process with several  $d$  and  $N$  values.

$N = 200$ ARIMA(1, $d$ , 0)	$d = 0$ $\phi = -0.7$	$d = 0$ $\phi = -0.8$	$d = 0$ $\phi = -0.9$	$d = 0$ $\phi = -0.95$	$d = 1$ $\phi = -1$	$d = 1$ $\phi = -1.05$	$d = 1$ $\phi = -1.1$	$d = 1$ $\phi = -1.2$
$\tilde{S}_N$ : Accepted $H_0$	0.997	0.870	0.303	0.130	0.020	0.027	0.023	0.010
KPSS: Accepted $H_0$	0.637	0.470	0.183	0.087	0.030	0.017	0.013	0.017
LMC: Accepted $H_0$	0.983	0.917	0.750	0.657	0.530	0.277	0.077	0
$\tilde{T}_N$ : Rejected $H'_0$	0.350	0.070	0.003	0	0	0	0	0
ADF: Rejected $H'_0$	1	1	0.957	0.677	0.047	0.037	0.063	0.050
PP : Rejected $H'_0$	1	1	1	0.797	0.005	0.047	0.060	0.037
$V/S$ : Accepted $H_0$	0.757	0.527	0.233	0.090	0.017	0.017	0.007	0.013

$N = 500$ ARIMA(1, $d$ , 0)	$d = 0$ $\phi = -0.7$	$d = 0$ $\phi = -0.8$	$d = 0$ $\phi = -0.9$	$d = 0$ $\phi = -0.95$	$d = 1$ $\phi = -1$	$d = 1$ $\phi = -1.05$	$d = 1$ $\phi = -1.1$	$d = 1$ $\phi = -1.2$
$\tilde{S}_N$ : Accepted $H_0$	1	0.950	0.353	0.087	0.010	0.007	0.003	0.007
KPSS: Accepted $H_0$	0.793	0.673	0.303	0.117	0.003	0	0.003	0.003
LMC: Accepted $H_0$	1	0.993	0.860	0.707	0.470	0.140	0.010	0
$\tilde{T}_N$ : Rejected $H'_0$	0.787	0.450	0.060	0	0	0	0	0
ADF: Rejected $H'_0$	1	1	1	0.997	0.067	0.050	0.033	0.033
PP : Rejected $H'_0$	1	1	1	1	0.070	0.050	0.030	0.030
$V/S$ : Accepted $H_0$	0.773	0.653	0.260	0.030	0	0.003	0	0

$N = 1000$ ARIMA(1, $d$ , 0)	$d = 0$ $\phi = -0.7$	$d = 0$ $\phi = -0.8$	$d = 0$ $\phi = -0.9$	$d = 0$ $\phi = -0.95$	$d = 1$ $\phi = -1$	$d = 1$ $\phi = -1.05$	$d = 1$ $\phi = -1.1$	$d = 1$ $\phi = -1.2$
$\tilde{S}_N$ : Accepted $H_0$	1	0.950	0.377	0.117	0	0	0	0
KPSS: Accepted $H_0$	0.817	0.723	0.447	0.107	0	0	0	0
LMC: Accepted $H_0$	1	1	0.963	0.797	0.560	0.060	0	0
$\tilde{T}_N$ : Rejected $H'_0$	0.957	0.680	0.173	0.007	0	0	0	0
ADF: Rejected $H'_0$	1	1	1	1	0.057	0.047	0.043	0.047
PP : Rejected $H'_0$	1	1	1	1	0.057	0.047	0.027	0.033
$V/S$ : Accepted $H_0$	0.817	0.693	0.267	0.037	0	0	0	0

$N = 5000$ ARIMA(1, $d$ , 0)	$d = 0$ $\phi = -0.7$	$d = 0$ $\phi = -0.8$	$d = 0$ $\phi = -0.9$	$d = 0$ $\phi = -0.95$	$d = 1$ $\phi = -1$	$d = 1$ $\phi = -1.05$	$d = 1$ $\phi = -1.1$	$d = 1$ $\phi = -1.2$
$\tilde{S}_N$ : Accepted $H_0$	1	0.997	0.877	0.293	0	0	0	0
KPSS: Accepted $H_0$	0.930	0.867	0.687	0.430	0	0	0	0
LMC: Accepted $H_0$	1	1	1	0.963	0.570	0	0	0
$\tilde{T}_N$ : Rejected $H'_0$	1	0.997	0.850	0.240	0	0	0	0
ADF: Rejected $H'_0$	1	1	1	1	0.033	0.057	0.057	0.043
PP : Rejected $H'_0$	1	1	1	1	0.037	0.060	0.060	0.040
$V/S$ : Accepted $H_0$	0.903	0.893	0.747	0.183	0	0	0	0

Table 5: Comparisons of stationarity and nonstationarity tests from 300 independent replications of ARIMA(1,  $d$ , 0) processes ( $X_t + \phi X_{t-1} = \varepsilon_t$ ) for several values of  $\phi$  and  $N$ . The accuracy of tests is measured by the frequencies of trajectories “accepted as stationary” (accepted  $H_0$  or rejected  $H'_0$ ) among the 300 replications which should be close to 1 for  $d \in (-0.5, 0.5)$  and close to 0 for  $d \in [0.5, 1.2]$



$N = 200$ ARFIMA(0,d,0)	$d = -0.4$	$d = -0.2$	$d = 0$	$d = 0.2$	$d = 0.4$	$d = 0.5$	$d = 0.6$	$d = 0.8$	$d = 1.0$	$d = 1.2$
$\tilde{S}_N$ : Accepted $H_0$	1	1	1	0.997	0.997	0.980	0.803	0.203	0.010	0.003
KPSS: Accepted $H_0$	1	1	0.950	0.727	0.340	0.240	0.097	0.057	0.017	0.013
LMC: Accepted $H_0$	1	1	0.933	0.360	0.017	0.007	0	0.010	0.483	1
$\tilde{T}_N$ : Rejected $H'_0$	1	1	0.997	0.860	0.380	0.100	0.033	0	0	0
ADF: Rejected $H'_0$	1	1	1	1	0.873	0.553	0.387	0.170	0.043	0.010
PP : Rejected $H'_0$	1	1	1	1	1	0.927	0.747	0.360	0.063	0
$V/S$ : Accepted $H_0$	1	1	0.953	0.617	0.347	0.173	0.107	0.033	0.017	0.007

$N = 500$ ARFIMA(0,d,0)	$d = -0.4$	$d = -0.2$	$d = 0$	$d = 0.2$	$d = 0.4$	$d = 0.5$	$d = 0.6$	$d = 0.8$	$d = 1.0$	$d = 1.2$
$\tilde{S}_N$ : Accepted $H_0$	1	1	1	1	1	0.960	0.793	0.070	0.010	0
KPSS: Accepted $H_0$	1	1	0.953	0.610	0.167	0.110	0.030	0.010	0.003	0
LMC: Accepted $H_0$	1	1	0.943	0.223	0	0	0	0	0.493	1
$\tilde{T}_N$ : Rejected $H'_0$	1	1	0.997	0.950	0.513	0.147	0.023	0	0	0
ADF: Rejected $H'_0$	1	1	1	1	0.973	0.737	0.607	0.260	0.053	0.010
PP : Rejected $H'_0$	1	1	1	1	1	0.990	0.910	0.437	0.053	0.007
$V/S$ : Accepted $H_0$	1	1	0.943	0.480	0.170	0.053	0.033	0	0	0

$N = 1000$ ARFIMA(0,d,0)	$d = -0.4$	$d = -0.2$	$d = 0$	$d = 0.2$	$d = 0.4$	$d = 0.5$	$d = 0.6$	$d = 0.8$	$d = 1.0$	$d = 1.2$
$\tilde{S}_N$ : Accepted $H_0$	1	1	1	1	1	0.960	0.553	0.020	0	0
KPSS: Accepted $H_0$	1	1	0.957	0.503	0.100	0.060	0.010	0.003	0	0
LMC: Accepted $H_0$	1	1	0.943	0.107	0	0	0	0	0.513	1
$\tilde{T}_N$ : Rejected $H'_0$	1	1	1	1	0.773	0.180	0.010	0	0	0
ADF: Rejected $H'_0$	1	1	1	1	0.997	0.867	0.747	0.343	0.047	0.003
PP : Rejected $H'_0$	1	1	1	1	1	0.997	0.973	0.527	0.043	0
$V/S$ : Accepted $H_0$	1	1	0.960	0.403	0.057	0.017	0	0	0	0

$N = 5000$ ARFIMA(0,d,0)	$d = -0.4$	$d = -0.2$	$d = 0$	$d = 0.2$	$d = 0.4$	$d = 0.5$	$d = 0.6$	$d = 0.8$	$d = 1.0$	$d = 1.2$
$\tilde{S}_N$ : Accepted $H_0$	1	1	1	1	1	0.980	0.067	0	0	0
KPSS: Accepted $H_0$	1	1	0.947	0.380	0.010	0.010	0	0	0	0
LMC: Accepted $H_0$	1	1	0.927	0.017	0	0	0	0	0.507	1
$\tilde{T}_N$ : Rejected $H'_0$	1	1	1	1	0.960	0.240	0	0	0	0
ADF: Rejected $H'_0$	1	1	1	1	1	0.977	0.923	0.447	0.067	0
PP : Rejected $H'_0$	1	1	1	1	1	1	1	0.647	0.060	0
$V/S$ : Accepted $H_0$	1	1	0.957	0.153	0	0	0	0	0	0

Table 6: Comparisons of stationarity and nonstationarity tests from 300 independent replications of ARFIMA(0,  $d$ , 0) processes for several values of  $d$  and  $N$ . The accuracy of tests is measured by the frequencies of trajectories “accepted as stationary” (accepted  $H_0$  or rejected  $H'_0$ ) among the 300 replications which should be close to 1 for  $d \in (-0.5, 0.5)$  and close to 0 for  $d \in [0.5, 1.2]$

$N = 200$ ARFIMA(1,d,1) $\phi = -0.3 ; \theta = 0.7$	$d = -0.4$	$d = -0.2$	$d = 0$	$d = 0.2$	$d = 0.4$	$d = 0.5$	$d = 0.6$	$d = 0.8$	$d = 1.0$	$d = 1.2$
$\tilde{S}_N$ : Accepted $H_0$	1	1	1	0.997	0.930	0.787	0.493	0.073	0	0
KPSS: Accepted $H_0$	1	0.990	0.927	0.547	0.317	0.203	0.137	0.040	0.003	0.003
LMC: Accepted $H_0$	0.943	0.810	0.990	1	1	1	1	1	1	1
$\tilde{T}_N$ : Rejected $H'_0$	1	0.997	0.920	0.497	0.100	0.030	0.010	0	0	0
ADF: Rejected $H'_0$	1	1	1	1	0.797	0.610	0.417	0.203	0.053	0.027
PP : Rejected $H'_0$	1	1	1	1	0.933	0.777	0.537	0.183	0.027	0.003
$V/S$ : Accepted $H_0$	1	0.997	0.910	0.537	0.310	0.157	0.097	0.033	0.020	0.003

$N = 500$ ARFIMA(1,d,1) $\phi = -0.3 ; \theta = 0.7$	$d = -0.4$	$d = -0.2$	$d = 0$	$d = 0.2$	$d = 0.4$	$d = 0.5$	$d = 0.6$	$d = 0.8$	$d = 1.0$	$d = 1.2$
$\tilde{S}_N$ : Accepted $H_0$	1	1	1	1	0.970	0.793	0.563	0.080	0.010	0
KPSS: Accepted $H_0$	1	1	0.913	0.557	0.193	0.087	0.060	0.003	0.007	0
LMC: Accepted $H_0$	0.967	0.887	1	1	1	1	1	1	1	1
$\tilde{T}_N$ : Rejected $H'_0$	1	1	1	0.850	0.207	0.043	0.003	0	0	0
ADF: Rejected $H'_0$	1	1	1	1	0.977	0.760	0.573	0.203	0.057	0.027
PP : Rejected $H'_0$	1	1	1	1	0.997	0.880	0.757	0.250	0.013	0
$V/S$ : Accepted $H_0$	1	1	0.917	0.460	0.163	0.083	0.030	0.003	0.003	0

$N = 1000$ ARFIMA(1,d,1) $\phi = -0.3 ; \theta = 0.7$	$d = -0.4$	$d = -0.2$	$d = 0$	$d = 0.2$	$d = 0.4$	$d = 0.5$	$d = 0.6$	$d = 0.8$	$d = 1.0$	$d = 1.2$
$\tilde{S}_N$ : Accepted $H_0$	1	1	1	1	0.980	0.767	0.377	0.033	0	0
KPSS: Accepted $H_0$	1	1	0.937	0.477	0.117	0.040	0.010	0.003	0	0
LMC: Accepted $H_0$	0.990	0.943	1	1	1	1	1	1	1	1
$\tilde{T}_N$ : Rejected $H'_0$	1	1	1	0.993	0.330	0.057	0.007	0.003	0	0
ADF: Rejected $H'_0$	1	1	1	1	1	0.860	0.687	0.273	0.043	0.010
PP : Rejected $H'_0$	1	1	1	1	1	0.953	0.857	0.357	0.027	0
$V/S$ : Accepted $H_0$	1	1	0.943	0.413	0.080	0.023	0.007	0	0	0

$N = 5000$ ARFIMA(1,d,1) $\phi = -0.3 ; \theta = 0.7$	$d = -0.4$	$d = -0.2$	$d = 0$	$d = 0.2$	$d = 0.4$	$d = 0.5$	$d = 0.6$	$d = 0.8$	$d = 1.0$	$d = 1.2$
$\tilde{S}_N$ : Accepted $H_0$	1	1	1	1	0.993	0.703	0.133	0	0	0
KPSS: Accepted $H_0$	1	1	0.937	0.380	0.037	0.003	0	0	0	0
LMC: Accepted $H_0$	1	1	1	1	1	1	1	1	1	1
$\tilde{T}_N$ : Rejected $H'_0$	1	1	1	1	0.670	0.043	0	0	0	0
ADF: Rejected $H'_0$	1	1	1	1	1	0.990	0.933	0.460	0.057	0.010
PP : Rejected $H'_0$	1	1	1	1	1	1	0.993	0.607	0.057	0
$V/S$ : Accepted $H_0$	1	1	0.943	0.200	0	0	0	0	0	0

Table 7: Comparisons of stationarity and nonstationarity tests from 300 independent replications of ARFIMA(1, d, 1) processes (with  $\phi = -0.3$  and  $\theta = 0.7$ ) for several values of  $d$  and  $N$ . The accuracy of tests is measured by the frequencies of trajectories “accepted as stationary” (accepted  $H_0$  or rejected  $H'_0$ ) among the 300 replications which should be close to 1 for  $d \in (-0.5, 0.5)$  and close to 0 for  $d \in [0.5, 1.2]$

$N = 200$ $X^{(d,1)}$	$d = -0.4$	$d = -0.2$	$d = 0$	$d = 0.2$	$d = 0.4$	$d = 0.5$	$d = 0.6$	$d = 0.8$	$d = 1.0$	$d = 1.2$
$\tilde{S}_N$ : Accepted $H_0$	1	1	1	1	1	1	0.977	0.633	0.093	0.017
KPSS: Accepted $H_0$	1	1	0.997	0.827	0.460	0.330	0.220	0.077	0.017	0.007
LMC: Accepted $H_0$	1	1	1	0.837	0.153	0.103	0.027	0	0	0.317
$\tilde{T}_N$ : Rejected $H'_0$	1	1	0.997	0.960	0.720	0.530	0.173	0.013	0	0
ADF: Rejected $H'_0$	1	1	1	1	1	0.723	0.620	0.463	0.280	0.120
PP : Rejected $H'_0$	1	1	1	1	1	0.997	0.990	0.880	0.493	0.113
$V/S$ : Accepted $H_0$	1	1	0.993	0.827	0.427	0.290	0.187	0.067	0.027	0.003

$N = 500$ $X^{(d,1)}$	$d = -0.4$	$d = -0.2$	$d = 0$	$d = 0.2$	$d = 0.4$	$d = 0.5$	$d = 0.6$	$d = 0.8$	$d = 1.0$	$d = 1.2$
$\tilde{S}_N$ : Accepted $H_0$	1	1	1	1	1	1	0.947	0.263	0.017	0
KPSS: Accepted $H_0$	1	1	0.970	0.693	0.310	0.130	0.050	0.013	0.003	0
LMC: Accepted $H_0$	1	1	1	0.670	0.037	0.003	0	0	0	0.270
$\tilde{T}_N$ : Rejected $H'_0$	1	1	1	0.987	0.803	0.533	0.207	0.003	0	0
ADF: Rejected $H'_0$	1	1	1	1	1	0.810	0.820	0.593	0.300	0.093
PP : Rejected $H'_0$	1	1	1	1	1	1	0.997	0.913	0.443	0.057
$V/S$ : Accepted $H_0$	1	1	0.990	0.653	0.207	0.090	0.053	0.007	0	0

$N = 1000$ $X^{(d,1)}$	$d = -0.4$	$d = -0.2$	$d = 0$	$d = 0.2$	$d = 0.4$	$d = 0.5$	$d = 0.6$	$d = 0.8$	$d = 1.0$	$d = 1.2$
$\tilde{S}_N$ : Accepted $H_0$	1	1	1	1	1	0.993	0.917	0.067	0.003	0
KPSS: Accepted $H_0$	1	1	0.990	0.597	0.157	0.073	0.023	0.007	0	0
LMC: Accepted $H_0$	1	1	1	0.553	0	0	0	0	0	0.177
$\tilde{T}_N$ : Rejected $H'_0$	1	1	1	1	0.910	0.667	0.213	0	0	0
ADF: Rejected $H'_0$	1	1	1	1	1	0.900	0.870	0.630	0.270	0.087
PP : Rejected $H'_0$	1	1	1	1	1	1	1	0.930	0.427	0.053
$V/S$ : Accepted $H_0$	1	1	1	0.580	0.090	0.027	0.007	0	0	0

$N = 5000$ $X^{(d,1)}$	$d = -0.4$	$d = -0.2$	$d = 0$	$d = 0.2$	$d = 0.4$	$d = 0.5$	$d = 0.6$	$d = 0.8$	$d = 1.0$	$d = 1.2$
$\tilde{S}_N$ : Accepted $H_0$	1	1	1	1	1	0.993	0.653	0	0	0
KPSS: Accepted $H_0$	1	1	0.977	0.417	0.050	0	0	0	0	0
LMC: Accepted $H_0$	1	1	1	0.213	0	0	0	0	0	0
$\tilde{T}_N$ : Rejected $H'_0$	1	1	1	1	0.977	0.730	0.073	0	0	0
ADF: Rejected $H'_0$	1	1	1	1	1	1	0.953	0.800	0.203	0.027
PP : Rejected $H'_0$	1	1	1	1	1	1	1	0.983	0.320	0.007
$V/S$ : Accepted $H_0$	1	1	0.987	0.253	0.007	0	0	0	0	0

Table 8: Comparisons of stationarity and nonstationarity tests from 300 independent replications of  $X^{(d,1)}$  processes for several values of  $d$  and  $N$ . The accuracy of tests is measured by the frequencies of trajectories “accepted as stationary” (accepted  $H_0$  or rejected  $H'_0$ ) among the 300 replications which should be close to 1 for  $d \in (-0.5, 0.5)$  and close to 0 for  $d \in [0.5, 1.2]$

$r=(\text{USD1 vs Deutsh-Mark Exchange Rate Return})$

Segments Breaks	(Non)Stationarity Test						LRD	Kurtosis	Skewness	$\hat{d}$			
	$\tilde{S}_N$	$\tilde{T}_N$	ADF	PP	KPSS	LMC	$V/S$	$\tilde{\kappa}$	$\tilde{s}$	$\hat{d}^{IR}$	$\hat{d}^{MS}$	$\hat{d}^{ROB}$	$\hat{d}^{WAV}$
[1 : 5963]	S	S	S	S	S	S	SM	5.5	-0.2	-0.031	0.059	0.057	-0.007
[5965 : 6313]	S	S	S	S	S	S	SM	3.4	0.1	0.034	0.169	0.122	-0.015
[6315 : 7173]	S	S	S	S	S	S	SM	5.3	-0.4	0.098	0.140	0.043	0.019

$|r| = \text{abs}(\text{USD1 vs Deutsh-Mark Exchange Rate Return})$

Segments Breaks	(Non)Stationarity Test						LRD	Kurtosis	Skewness	$\hat{d}$			
	$\tilde{S}_N$	$\tilde{T}_N$	ADF	PP	KPSS	LMC	$V/S$	$\tilde{\kappa}$	$\tilde{s}$	$\hat{d}^{IR}$	$\hat{d}^{MS}$	$\hat{d}^{ROB}$	$\hat{d}^{WAV}$
[1 : 5963]	S	S	S	S	NS	NS	LM	9.5	1.8	0.294	0.301	0.344	0.275
[5965 : 6313]	S	S	NS	S	NS	NS	LM	3.6	1.1	-0.121	0.153	0.414	-0.038
[6315 : 7173]	S	S	S	S	NS	NS	LM	9.2	1.8	0.168	0.417	0.389	0.410

$r^2 = (\text{USD1 vs Deutsh-Mark Exchange Rate Return})^2$

Segments Breaks	(Non)Stationarity Test						LRD	Kurtosis	Skewness	$\hat{d}$			
	$\tilde{S}_N$	$\tilde{T}_N$	ADF	PP	KPSS	LMC	$V/S$	$\tilde{\kappa}$	$\tilde{s}$	$\hat{d}^{IR}$	$\hat{d}^{MS}$	$\hat{d}^{ROB}$	$\hat{d}^{WAV}$
[1 : 5963]	S	S	S	S	S	S	LM	289.5	10.7	0.081	0.258	0.298	0.078
[5965 : 6313]	S	S	S	S	NS	S	LM	8.7	2.3	-0.018	0.127	0.431	-0.096
[6315 : 7173]	S	S	S	S	NS	S	LM	81.3	7.1	0.035	0.411	0.336	0.428

$|r|^\theta = (\text{abs}(\text{USD1 vs Deutsh-Mark Exchange Rate Return}))^\theta$

$\hat{\theta}_i^{(j)} =$ $\text{ArgMax}_\theta(\hat{d}( r_i ^\theta))$	(Non)Stationarity Test						LRD	Kurtosis	Skewness	$\hat{d}$			
	$\tilde{S}_N$	$\tilde{T}_N$	ADF	PP	KPSS	LMC	$V/S$	$\tilde{\kappa}$	$\tilde{s}$	$\hat{d}^{IR}$	$\hat{d}^{MS}$	$\hat{d}^{ROB}$	$\hat{d}^{WAV}$
$\hat{\theta}_1^{(IR)}=0.32$	S	S	NS	S	NS	NS	SM	3.5	-0.5	<b>0.321*</b>	0.251	0.256	0.343
$\hat{\theta}_1^{(MS)}=0.97$	S	S	S	S	NS	NS	SM	8.7	1.1	0.293	<b>0.301*</b>	0.343	0.275
$\hat{\theta}_1^{(ROB)}=1.12$	S	S	S	S	NS	NS	SM	13.7	2.3	0.302	0.300	<b>0.345*</b>	0.273
$\hat{\theta}_1^{(WAV)}=0.77$	S	S	S	S	NS	NS	SM	5.1	1.1	0.273	0.298	0.335	<b>0.379*</b>
$\hat{\theta}_2^{(IR)}=0.05$	S	S	NS	NS	S	NS	LM	27.9	-5.0	<b>0.246*</b>	0.078	-0.005	0.103
$\hat{\theta}_2^{(MS)}=1.31$	S	S	S	S	NS	NS	LM	4.9	1.5	-0.103	<b>0.166*</b>	0.446	-0.072
$\hat{\theta}_2^{(ROB)}=1.50$	S	S	S	S	NS	S	LM	5.8	1.8	-0.092	0.162	<b>0.450*</b>	-0.082
$\hat{\theta}_2^{(WAV)}=0.03$	S	S	NS	NS	S	NS	LM	30.9	-5.4	0.239	0.113	-0.030	<b>0.211*</b>
$\hat{\theta}_3^{(IR)}=0.63$	S	S	NS	NS	NS	NS	LM	3.8	0.7	<b>0.244*</b>	0.354	0.333	0.097
$\hat{\theta}_3^{(MS)}=1.44$	S	S	S	S	NS	NS	LM	27.1	3.7	0.159	<b>0.436*</b>	0.387	0.441
$\hat{\theta}_3^{(ROB)}=1.19$	S	S	S	S	NS	NS	LM	14.9	2.6	0.168	0.430	<b>0.394*</b>	0.430
$\hat{\theta}_3^{(WAV)}=2.90$	S	S	S	S	NS	S	LM	223.4	13.3	0.053	0.291	0.233	<b>0.475*</b>

Table 9: Results of stationarity, nonstationarity and V/S tests and the 4 long memory parameter estimators applied to several functionals  $f$  of USD1 vs Deutsh-Mark Exchange Rate Return: from the top to bottom,  $f(x) = x$ ,  $f(x) = |x|$ ,  $f(x) = x^2$  and  $f(x) = |x|^\theta$  with  $\theta$  maximizing the 4 different long memory parameter estimators ("S" for "stationarity" decision and "NS" for "nonstationarity" decision). Statistics are applied to the 3 estimated stages of each trajectory (obtained from a change detection algorithm).

r=Dow Jones Transportation Index Return

Segments Breaks	(Non)Stationarity Test						LRD	Kurtosis	Skewness	$\hat{d}$			
	$\tilde{S}_N$	$\tilde{T}_N$	ADF	PP	KPSS	LMC	V/S	$\tilde{\kappa}$	$\tilde{s}$	$\hat{d}^{IR}$	$\hat{d}^{MS}$	$\hat{d}^{ROB}$	$\hat{d}^{WAV}$
[1 : 1271]	S	S	S	S	S	NS	SM	4.6	0.0	0.218	0.174	0.098	0.198
[1273 : 8531]	S	S	S	S	S	S	SM	21.7	-0.8	0.053	0.002	0.008	-0.404
[8533 : 12071]	S	S	S	S	S	S	SM	8.3	-0.3	0.002	-0.015	-0.034	-0.038

$|r| = abs(\text{Dow Jones Transportation Index Return})$

Segments Breaks	(Non)Stationarity Test						LRD	Kurtosis	Skewness	$\hat{d}$			
	$\tilde{S}_N$	$\tilde{T}_N$	ADF	PP	KPSS	LMC	V/S	$\tilde{\kappa}$	$\tilde{s}$	$\hat{d}^{IR}$	$\hat{d}^{MS}$	$\hat{d}^{ROB}$	$\hat{d}^{WAV}$
[1 : 1272]	S	S	S	S	NS	NS	LM	6.1	1.5	0.154	0.320	0.270	0.166
[1273 : 8532]	S	S	S	S	NS	NS	LM	57.3	4.4	0.322	0.260	0.240	0.168
[8533 : 12071]	S	S	S	S	NS	NS	LM	16.3	2.5	0.405	0.476	0.496	0.374

$r^2 = (\text{Dow Jones Transportation Index Return})^2$

Segments Breaks	(Non)Stationarity Test						LRD	Kurtosis	Skewness	$\hat{d}$			
	$\tilde{S}_N$	$\tilde{T}_N$	ADF	PP	KPSS	LMC	V/S	$\tilde{\kappa}$	$\tilde{s}$	$\hat{d}^{IR}$	$\hat{d}^{MS}$	$\hat{d}^{ROB}$	$\hat{d}^{WAV}$
[1 : 1272]	S	S	S	S	NS	S	LM	32.3	4.4	0.158	0.284	0.231	0.231
[1273 : 8532]	S	S	S	S	S	NS	LM	2301.5	39.9	0.334	0.122	0.093	0.118
[8533 : 12071]	S	NS	S	S	NS	NS	LM	459.0	15.5	0.416	0.452	0.434	0.356

$|r|^\theta = (abs(\text{Dow Jones Transportation Index Return}))^\theta$

$\hat{\theta}_i^{(j)} =$ ArgMax $_{\theta}(\hat{d}( r_i ^\theta))$	(Non)Stationarity Test						LRD	Kurtosis	Skewness	$\hat{d}$			
	$\tilde{S}_N$	$\tilde{T}_N$	ADF	PP	KPSS	LMC	V/S	$\tilde{\kappa}$	$\tilde{s}$	$\hat{d}^{IR}$	$\hat{d}^{MS}$	$\hat{d}^{ROB}$	$\hat{d}^{WAV}$
$\hat{\theta}_1^{(IR)} = 1.83$	S	S	S	S	NS	S	LM	25.0	3.8	<b>0.252*</b>	0.291	0.237	0.202
$\hat{\theta}_1^{(MS)} = 0.45$	S	S	NS	S	NS	NS	LM	2.7	0.4	0.118	<b>0.331*</b>	0.290	0.047
$\hat{\theta}_1^{(ROB)} = 0.36$	S	S	NS	S	NS	NS	LM	2.9	-0.4	0.118	0.329	<b>0.291*</b>	0.237
$\hat{\theta}_1^{(WAV)} = 0.03$	S	S	NS	S	NS	NS	LM	12.8	-3.4	0.149	0.257	0.260	<b>0.327*</b>
$\hat{\theta}_2^{(IR)} = 2.06$	S	S	S	S	S	NS	LM	2551.6	42.6	<b>0.355*</b>	0.113	0.086	0.110
$\hat{\theta}_2^{(MS)} = 0.68$	S	S	S	S	NS	NS	LM	10.6	1.6	0.308	<b>0.276*</b>	0.261	0.135
$\hat{\theta}_2^{(ROB)} = 0.65$	S	S	S	S	NS	NS	LM	9.2	1.4	0.303	0.276	<b>0.261*</b>	0.129
$\hat{\theta}_2^{(WAV)} = 1.29$	S	S	S	S	NS	NS	LM	246.8	10.1	0.330	0.227	0.200	<b>0.504*</b>
$\hat{\theta}_3^{(IR)} = 0.66$	S	NS	S	S	NS	NS	LM	5.4	1.1	<b>0.444*</b>	0.435	0.461	0.374
$\hat{\theta}_3^{(MS)} = 1.38$	S	S	S	S	NS	NS	LM	64.8	5.2	0.402	<b>0.492*</b>	0.499	0.391
$\hat{\theta}_3^{(ROB)} = 1.22$	S	S	S	S	NS	NS	LM	36.2	3.8	0.400	0.489	<b>0.502*</b>	0.387
$\hat{\theta}_3^{(WAV)} = 2.75$	S	S	S	S	NS	NS	LM	1698.7	35.8	0.407	0.315	0.287	<b>0.466*</b>

Table 10: Results of stationarity, nonstationarity and V/S tests and the 4 long memory parameter estimators applied to several functionals  $f$  of DowJones Transportation Index Return: from the top to bottom,  $f(x) = x$ ,  $f(x) = |x|$ ,  $f(x) = x^2$  and  $f(x) = |x|^\theta$  with  $\theta$  maximizing the 4 different long memory parameter estimators ("S" for "stationarity" decision and "NS" for "nonstationarity" decision). Statistics are applied to the 3 estimated stages of each trajectory (obtained from a change detection algorithm).

r=Dow Jones Utilities Index Return

Segments Breaks	(Non)Stationarity Test						LRD	Kurtosis	Skewness	$\hat{d}$			
	$\tilde{S}_N$	$\tilde{T}_N$	ADF	PP	KPSS	LMC	V/S	$\tilde{\kappa}$	$\tilde{s}$	$\hat{d}^{IR}$	$\hat{d}^{MS}$	$\hat{d}^{ROB}$	$\hat{d}^{WAV}$
[1 : 1152]	S	S	S	S	S	S	SM	7.3	0.6	0.191	0.037	-0.132	0.222
[1153 : 8748]	S	S	S	S	S	S	SM	43.2	-1.3	0.094	0.025	0.001	0.043
[8749 : 12071]	S	S	S	S	S	S	SM	13.0	0.0	0.026	0.024	0.001	-0.032

 $|r| = abs(\text{Dow Jones Utilities Index Return})$ 

Segments Breaks	(Non)Stationarity Test						LRD	Kurtosis	Skewness	$\hat{d}$			
	$\tilde{S}_N$	$\tilde{T}_N$	ADF	PP	KPSS	LMC	V/S	$\tilde{\kappa}$	$\tilde{s}$	$\hat{d}^{IR}$	$\hat{d}^{MS}$	$\hat{d}^{ROB}$	$\hat{d}^{WAV}$
[1 : 1152]	S	S	S	S	NS	NS	LM	11.9	2.4	0.283	0.287	0.316	0.225
[1153 : 8748]	S	S	S	S	NS	NS	LM	127.4	5.9	0.134	0.301	0.304	0.184
[8749 : 12071]	S	S	S	S	NS	NS	LM	25.5	3.4	0.417	0.559	0.484	0.595

 $r^2 = (\text{Dow Jones Utilities Index Return})^2$ 

Segments Breaks	(Non)Stationarity Test						LRD	Kurtosis	Skewness	$\hat{d}$			
	$\tilde{S}_N$	$\tilde{T}_N$	ADF	PP	KPSS	LMC	V/S	$\tilde{\kappa}$	$\tilde{s}$	$\hat{d}^{IR}$	$\hat{d}^{MS}$	$\hat{d}^{ROB}$	$\hat{d}^{WAV}$
[1 : 1152]	S	S	S	S	NS	S	LM	63.1	6.7	0.250	0.253	0.212	0.270
[1153 : 8748]	S	S	S	S	NS	NS	LM	5322.4	67.8	0.130	0.100	0.100	0.100
[8749 : 12071]	S	NS	S	S	NS	NS	LM	289.6	14.0	0.510	0.468	0.423	0.513

 $|r|^\theta = (abs(\text{Dow Jones Utilities Index Return}))^\theta$ 

$\hat{\theta}_i^{(j)} =$ ArgMax $_{\theta}(\hat{d}( r_i ^\theta))$	(Non)Stationarity Test						LRD	Kurtosis	Skewness	$\hat{d}$			
	$\tilde{S}_N$	$\tilde{T}_N$	ADF	PP	KPSS	LMC	V/S	$\tilde{\kappa}$	$\tilde{s}$	$\hat{d}^{IR}$	$\hat{d}^{MS}$	$\hat{d}^{ROB}$	$\hat{d}^{WAV}$
$\hat{\theta}_1^{(IR)} = 0.39$	S	S	NS	S	NS	NS	LM	3.3	-0.1	<b>0.354*</b>	0.262	0.327	0.145
$\hat{\theta}_1^{(MS)} = 1.09$	S	S	S	S	NS	NS	LM	14.6	8.4	0.215	<b>0.288*</b>	0.308	0.234
$\hat{\theta}_1^{(ROB)} = 0.60$	S	S	NS	S	NS	NS	LM	4.5	0.8	0.311	0.276	<b>0.336*</b>	0.396
$\hat{\theta}_1^{(WAV)} = 0.63$	S	S	S	S	NS	NS	LM	4.8	1.0	0.310	0.278	0.336	<b>0.398*</b>
$\hat{\theta}_2^{(IR)} = 3.00$	S	S	S	S	S	S	LM	7320.6	84.9	<b>0.165*</b>	0.015	0.017	0.040
$\hat{\theta}_2^{(MS)} = 0.61$	S	S	S	S	NS	NS	LM	9.1	1.2	0.113	<b>0.330*</b>	0.327	0.113
$\hat{\theta}_2^{(ROB)} = 0.67$	S	S	S	S	NS	NS	LM	13.0	1.6	0.117	0.330	<b>0.327*</b>	0.113
$\hat{\theta}_2^{(WAV)} = 1.84$	S	S	S	S	NS	NS	LM	4386.6	59.1	0.125	0.130	0.129	<b>0.377*</b>
$\hat{\theta}_3^{(IR)} = 2.69$	S	NS	S	S	NS	NS	LM	683.1	22.5	<b>0.527*</b>	0.394	0.344	0.426
$\hat{\theta}_3^{(MS)} = 0.95$	S	S	S	S	NS	NS	LM	21.6	3.1	0.415	<b>0.560*</b>	0.483	0.544
$\hat{\theta}_3^{(ROB)} = 1.10$	S	S	S	S	NS	NS	LM	35.2	4.2	0.421	0.557	<b>0.485*</b>	0.364
$\hat{\theta}_3^{(WAV)} = 1.03$	S	S	S	S	NS	NS	LM	28.2	3.7	0.419	0.559	0.484	<b>0.723*</b>

Table 11: Results of stationarity, nonstationarity and V/S tests and the 4 long memory parameter estimators applied to several functionals  $f$  of Dow Jones Utilities Index Return: from the top to bottom,  $f(x) = x$ ,  $f(x) = |x|$ ,  $f(x) = x^2$  and  $f(x) = |x|^\theta$  with  $\theta$  maximizing the 4 different long memory parameter estimators ("S" for "stationarity" decision and "NS" for "nonstationarity" decision). Statistics are applied to the 3 estimated stages of each trajectory (obtained from a change detection algorithm).

r=Nasdaq Industrials Index Return

Segments Breaks	(Non)Stationarity Test						LRD	Kurtosis	Skewness	$\hat{d}$			
	$\tilde{S}_N$	$\tilde{T}_N$	ADF	PP	KPSS	LMC	V/S	$\tilde{\kappa}$	$\tilde{s}$	$\hat{d}^{IR}$	$\hat{d}^{MS}$	$\hat{d}^{ROB}$	$\hat{d}^{WAV}$
[1 : 7160]	S	S	S	S	S	S	SM	20.7	-1.5	0.141	0.073	0.092	-0.202
[7161 : 8320]	S	S	S	S	S	S	SM	4.6	0.0	0.012	0.070	0.116	0.014
[8321 : 10480]	S	S	S	S	NS	S	SM	10.4	-0.3	0.045	0.078	0.082	-0.045

 $|r| = abs(\text{Nasdaq Industrials Index Return})$ 

Segments Breaks	(Non)Stationarity Test						LRD	Kurtosis	Skewness	$\hat{d}$			
	$\tilde{S}_N$	$\tilde{T}_N$	ADF	PP	KPSS	LMC	V/S	$\tilde{\kappa}$	$\tilde{s}$	$\hat{d}^{IR}$	$\hat{d}^{MS}$	$\hat{d}^{ROB}$	$\hat{d}^{WAV}$
[1 : 7160]	S	S	S	S	S	NS	SM	52.4	4.4	0.361	0.309	0.287	0.274
[7161 : 8320]	S	S	S	S	NS	NS	LM	7.4	1.6	0.284	0.532	0.504	0.385
[8321 : 10480]	S	NS	S	NS	NS	NS	LM	18.3	3.0	0.516	0.761	0.606	0.668

 $r^2 = (\text{Nasdaq Industrials Index Return})^2$ 

Segments Breaks	(Non)Stationarity Test						LRD	Kurtosis	Skewness	$\hat{d}$			
	$\tilde{S}_N$	$\tilde{T}_N$	ADF	PP	KPSS	LMC	V/S	$\tilde{\kappa}$	$\tilde{s}$	$\hat{d}^{IR}$	$\hat{d}^{MS}$	$\hat{d}^{ROB}$	$\hat{d}^{WAV}$
[1 : 7160]	S	S	S	S	S	NS	SM	1356.8	31.4	0.381	0.146	0.114	0.100
[7161 : 8320]	S	S	S	S	NS	NS	LM	49.0	5.4	0.304	0.466	0.378	0.432
[8321 : 10480]	S	NS	S	S	NS	NS	LM	140.0	10.0	0.498	0.786	0.544	0.708

 $|r|^\theta = (abs(\text{Nasdaq Industrials Index Return}))^\theta$ 

$\hat{\theta}_i^{(j)} =$ ArgMax $_{\theta}(\hat{d}( r_i ^\theta))$	(Non)Stationarity Test						LRD	Kurtosis	Skewness	$\hat{d}$			
	$\tilde{S}_N$	$\tilde{T}_N$	ADF	PP	KPSS	LMC	V/S	$\tilde{\kappa}$	$\tilde{s}$	$\hat{d}^{IR}$	$\hat{d}^{MS}$	$\hat{d}^{ROB}$	$\hat{d}^{WAV}$
$\hat{\theta}_1^{(IR)} = 1.04$	S	S	S	S	S	NS	LM	63.7	4.9	<b>0.396*</b>	0.304	0.281	0.325
$\hat{\theta}_1^{(MS)} = 0.67$	S	S	S	S	NS	NS	LM	10.2	0.7	0.188	<b>0.329*</b>	0.325	0.293
$\hat{\theta}_1^{(ROB)} = 0.56$	S	S	S	S	NS	NS	LM	6.3	0.9	0.178	0.326	<b>0.328*</b>	0.275
$\hat{\theta}_1^{(WAV)} = 0.83$	S	S	S	S	NS	NS	LM	22.4	2.6	0.199	0.324	0.311	<b>0.587*</b>
$\hat{\theta}_2^{(IR)} = 2.83$	S	S	S	S	NS	S	LM	142.0	9.8	<b>0.317*</b>	0.374	0.276	0.263
$\hat{\theta}_2^{(MS)} = 1.03$	S	S	S	S	NS	NS	LM	7.9	1.7	0.284	<b>0.532*</b>	0.501	0.388
$\hat{\theta}_2^{(ROB)} = 0.73$	S	S	NS	S	NS	NS	LM	4.2	0.9	0.300	0.517	<b>0.517*</b>	0.340
$\hat{\theta}_2^{(WAV)} = 1.87$	S	S	S	S	NS	NS	LM	39.8	4.8	0.299	0.479	0.395	<b>0.432*</b>
$\hat{\theta}_3^{(IR)} = 2.60$	S	NS	S	S	NS	S	LM	256.9	14.3	<b>0.548*</b>	0.272	0.479	0.669
$\hat{\theta}_3^{(MS)} = 1.70$	S	NS	S	S	NS	NS	LM	89.1	7.7	0.504	<b>0.801*</b>	0.575	0.739
$\hat{\theta}_3^{(ROB)} = 1.13$	S	NS	S	S	NS	NS	LM	26.0	3.7	0.526	0.772	<b>0.608*</b>	0.671
$\hat{\theta}_3^{(WAV)} = 1.26$	S	NS	S	S	NS	NS	LM	36.0	4.5	0.532	0.782	0.606	<b>0.760*</b>

Table 12: Results of stationarity, nonstationarity and V/S tests and the 4 long memory parameter estimators applied to several functionals  $f$  of Nasdaq Industrials Index Return: from the top to bottom,  $f(x) = x$ ,  $f(x) = |x|$ ,  $f(x) = x^2$  and  $f(x) = |x|^\theta$  with  $\theta$  maximizing the 4 different long memory parameter estimators ("S" for "stationarity" decision and "NS" for "nonstationarity" decision). Statistics are applied to the 3 estimated stages of each trajectory (obtained from a change detection algorithm).

r=Nikkei 225A Index Return

Segments Breaks	(Non)Stationarity Test						LRD	Kurtosis	Skewness	$\hat{d}$			
	$\tilde{S}_N$	$\tilde{T}_N$	ADF	PP	KPSS	LMC	V/S	$\tilde{\kappa}$	$\tilde{s}$	$\hat{d}^{IR}$	$\hat{d}^{MS}$	$\hat{d}^{ROB}$	$\hat{d}^{WAV}$
[1 : 6672]	S	S	S	S	S	S	SM	12.6	-0.6	0.083	0.067	0.084	0.022
[6673 : 10400]	S	S	S	S	S	S	SM	63.7	-2.3	-0.021	-0.016	-0.013	-0.039
[10401 : 15919]	S	S	S	S	S	S	SM	9.0	-0.1	0.033	0.047	-0.005	-0.015

 $|r| = abs(\text{Nikkei 225A Index Return})$ 

Segments Breaks	(Non)Stationarity Test						LRD	Kurtosis	Skewness	$\hat{d}$			
	$\tilde{S}_N$	$\tilde{T}_N$	ADF	PP	KPSS	LMC	V/S	$\tilde{\kappa}$	$\tilde{s}$	$\hat{d}^{IR}$	$\hat{d}^{MS}$	$\hat{d}^{ROB}$	$\hat{d}^{WAV}$
[1 : 6672]	S	S	S	S	NS	NS	LM	26.1	3.3	0.302	0.343	0.313	0.218
[6673 : 10400]	S	S	S	S	NS	NS	LM	150.9	7.5	0.196	0.346	0.304	0.321
[10401 : 15919]	S	S	S	S	NS	NS	LM	17.0	2.6	0.413	0.415	0.431	0.335

 $r^2 = (\text{Nikkei 225A Index Return})^2$ 

Segments Breaks	(Non)Stationarity Test						LRD	Kurtosis	Skewness	$\hat{d}$			
	$\tilde{S}_N$	$\tilde{T}_N$	ADF	PP	KPSS	LMC	V/S	$\tilde{\kappa}$	$\tilde{s}$	$\hat{d}^{IR}$	$\hat{d}^{MS}$	$\hat{d}^{ROB}$	$\hat{d}^{WAV}$
[1 : 6672]	S	S	S	S	NS	NS	LM	427.8	16.9	0.275	0.241	0.267	0.080
[6673 : 10400]	S	S	S	S	S	NS	LM	2610.8	48.0	0.230	0.146	0.154	0.117
[10401 : 15919]	S	S	S	S	NS	NS	LM	235.5	12.3	0.381	0.396	0.363	0.377

 $|r|^\theta = (abs(\text{Nikkei 225A Index Return}))^\theta$ 

$\hat{\theta}_i^{(j)} =$ ArgMax $_{\theta}(\hat{d}( r_i ^\theta))$	(Non)Stationarity Test						LRD	Kurtosis	Skewness	$\hat{d}$			
	$\tilde{S}_N$	$\tilde{T}_N$	ADF	PP	KPSS	LMC	V/S	$\tilde{\kappa}$	$\tilde{s}$	$\hat{d}^{IR}$	$\hat{d}^{MS}$	$\hat{d}^{ROB}$	$\hat{d}^{WAV}$
$\hat{\theta}_1^{(IR)} = 1.53$	S	S	S	S	NS	NS	LM	149.8	9.0	<b>0.323*</b>	0.296	0.296	0.201
$\hat{\theta}_1^{(MS)} = 0.86$	S	S	S	S	NS	NS	LM	15.4	4.4	0.286	<b>0.345*</b>	0.311	0.213
$\hat{\theta}_1^{(ROB)} = 1.01$	S	S	S	S	NS	NS	LM	27.1	3.4	0.303	0.342	<b>0.313*</b>	0.218
$\hat{\theta}_1^{(WAV)} = 1.30$	S	S	S	S	NS	NS	LM	74.8	6.1	0.273	0.322	0.307	<b>0.622*</b>
$\hat{\theta}_2^{(IR)} = 3.00$	S	S	S	S	S	S	LM	3487.4	58.3	<b>0.252*</b>	0.037	0.042	0.045
$\hat{\theta}_2^{(MS)} = 0.84$	S	S	S	S	NS	NS	SM	55.5	4.1	0.180	<b>0.353*</b>	0.304	0.154
$\hat{\theta}_2^{(ROB)} = 0.91$	S	S	S	S	NS	NS	SM	87.1	5.3	0.186	0.352	<b>0.305*</b>	0.035
$\hat{\theta}_2^{(WAV)} = 1.64$	S	S	S	S	S	NS	SM	1697.1	35.8	0.221	0.220	0.222	<b>0.465*</b>
$\hat{\theta}_3^{(IR)} = 1.23$	S	NS	S	S	NS	NS	LM	35.7	4.1	<b>0.467*</b>	0.412	0.426	0.386
$\hat{\theta}_3^{(MS)} = 0.87$	S	S	S	S	NS	NS	LM	11.0	2.0	0.429	<b>0.415*</b>	0.428	0.351
$\hat{\theta}_3^{(ROB)} = 1.00$	S	S	S	S	NS	NS	LM	17.0	2.6	0.413	0.415	<b>0.431*</b>	0.335
$\hat{\theta}_3^{(WAV)} = 1.27$	S	NS	S	S	NS	NS	LM	40.3	4.4	0.467	0.411	0.424	<b>0.425*</b>

Table 13: Results of stationarity, nonstationarity and V/S tests and the 4 long memory parameter estimators applied to several functionals  $f$  of Nikkei 225A Index Return: from the top to bottom,  $f(x) = x$ ,  $f(x) = |x|$ ,  $f(x) = x^2$  and  $f(x) = |x|^\theta$  with  $\theta$  maximizing the 4 different long memory parameter estimators ("S" for "stationarity" decision and "NS" for "nonstationarity" decision). Statistics are applied to the 3 estimated stages of each trajectory (obtained from a change detection algorithm).