



**HAL**  
open science

## Long-term follow-up reveals that ulceration and sentinel lymph node status are the strongest predictors for survival in patients with primary cutaneous melanoma

M. de Vries, M.J. Speijers, E. Bastiaannet, J.Th.M. Plukker, A.H. Brouwers, R.J. van Ginkel, A.J.H. Suurmeijer, H.J. Hoekstra

### ► To cite this version:

M. de Vries, M.J. Speijers, E. Bastiaannet, J.Th.M. Plukker, A.H. Brouwers, et al.. Long-term follow-up reveals that ulceration and sentinel lymph node status are the strongest predictors for survival in patients with primary cutaneous melanoma. *EJSO - European Journal of Surgical Oncology*, 2011, 37 (8), pp.681. 10.1016/j.ejso.2011.05.003 . hal-00715500

**HAL Id: hal-00715500**

**<https://hal.science/hal-00715500>**

Submitted on 8 Jul 2012

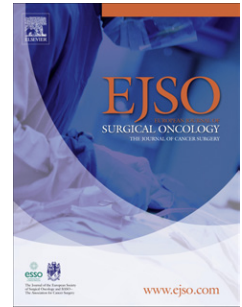
**HAL** is a multi-disciplinary open access archive for the deposit and dissemination of scientific research documents, whether they are published or not. The documents may come from teaching and research institutions in France or abroad, or from public or private research centers.

L'archive ouverte pluridisciplinaire **HAL**, est destinée au dépôt et à la diffusion de documents scientifiques de niveau recherche, publiés ou non, émanant des établissements d'enseignement et de recherche français ou étrangers, des laboratoires publics ou privés.

# Accepted Manuscript

Title: Long-term follow-up reveals that ulceration and sentinel lymph node status are the strongest predictors for survival in patients with primary cutaneous melanoma

Authors: M. de Vries, M.J. Speijers, E. Bastiaannet, J.Th.M. Plukker, A.H. Brouwers, R.J. van Ginkel, A.J.H. Suurmeijer, H.J. Hoekstra



PII: S0748-7983(11)00287-3

DOI: [10.1016/j.ejso.2011.05.003](https://doi.org/10.1016/j.ejso.2011.05.003)

Reference: YEJSO 3162

To appear in: *European Journal of Surgical Oncology*

Accepted Date: 5 May 2011

Please cite this article as: de Vries M, Speijers MJ, Bastiaannet E, Plukker T, Brouwers AH, van Ginkel RJ, Suurmeijer AJH, Hoekstra HJ. Long-term follow-up reveals that ulceration and sentinel lymph node status are the strongest predictors for survival in patients with primary cutaneous melanoma, *European Journal of Surgical Oncology* (2011), doi: 10.1016/j.ejso.2011.05.003

This is a PDF file of an unedited manuscript that has been accepted for publication. As a service to our customers we are providing this early version of the manuscript. The manuscript will undergo copyediting, typesetting, and review of the resulting proof before it is published in its final form. Please note that during the production process errors may be discovered which could affect the content, and all legal disclaimers that apply to the journal pertain.

LONG-TERM FOLLOW-UP REVEALS THAT ULCERATION AND SENTINEL LYMPH NODE STATUS ARE THE  
STRONGEST PREDICTORS FOR SURVIVAL IN PATIENTS WITH PRIMARY CUTANEOUS MELANOMA

M. de Vries<sup>1</sup>

M. J. Speijers<sup>1</sup>

E. Bastiaannet<sup>1</sup>

J. Th. M. Plukker<sup>1</sup>

A. H. Brouwers<sup>2</sup>

R. J. van Ginkel<sup>1</sup>

A. J.H. Suurmeijer<sup>3</sup>

H. J. Hoekstra<sup>1</sup>

1) Department of Surgical Oncology, University Medical Center Groningen and University of Groningen, Groningen, The Netherlands.

2) Department of Nuclear Medicine and Molecular Imaging, University Medical Center Groningen and University of Groningen, Groningen, The Netherlands.

3) Department of Pathology, University Medical Center Groningen and University of Groningen, Groningen, The Netherlands.

Correspondence to: H.J. Hoekstra, MD, PhD

Department of Surgical Oncology

University Medical Center Groningen

P.O. Box 30.001

9700 RB Groningen

The Netherlands

Tel: 00 31 50 361 2317

Fax: 00 31 50 361 4873

E-mail: h.j.hoekstra@chir.umcg.nl

Presented at SSO 2010 – 63rd Annual Cancer Symposium of the Society of Surgical Oncology, March 3-7, St. Louis, Missouri, United States of America.

#### Synopsis

Long-term follow-up data show that tumor-positive SLN melanoma patients have a worse DFS, DSS and OS than tumor-negative SLN patients after 10 years. Ulceration and SLN status are the strongest prognostic factors for long-term DFS and DSS.

## ABSTRACT

**Purpose:** To assess the long-term outcome after sentinel lymph node biopsy (SLNB) in melanoma patients.

**Methods:** Between 1995-2009 450 melanoma patients underwent SLNB in a single center. Survival and prognostic factors were analyzed for 429 patients.

**Results:** Median age was 53 (range 11-84) years. Median Breslow thickness was 2.4 (range 1-20) mm and 36% were ulcerated melanomas. Median follow-up time was 64.8 (range 2-174) months. A tumor-positive SLN was present in 140 patients (31%). Completion lymph node dissection (CLND) was performed in 119 patients and these patients were analyzed for recurrence and survival.

124 Patients (29%) relapsed during follow-up; 55 in the node-positive group who underwent CLND (55/119;46%) and 69 in the node-negative group (69/310;22%; $p<0.001$ ). In the node-negative group 17 patients developed recurrence in the regional node field; false-negative rate 11%.

On multivariate analysis strongest prognostic factors for disease free survival (DFS) were primary melanoma ulceration and SLN positivity (Hazard Ratio (HR) of 2.2 and 2.3;  $p<0.001$ ). For disease specific survival (DSS) the same was found to be true with a HR of 2.1 for ulceration and 2.0 for SLN positivity ( $p=0.001$  and  $p=0.002$  respectively). 10-Year DFS was 71% for node-negative patients compared with 48% for node-positive patients ( $p<0.001$ ). 10-Year DSS was 77% for node-negative patients compared to 60% for node-positive patients ( $p<0.001$ ).

**Conclusions:** This study shows a remarkably high percentage of tumor-positive SLN. The long-term follow-up data confirm that tumor-positive SLN patients have a worse DFS and DSS than tumor-negative SLN patients. Ulceration and SLN status proved to be the strongest prognostic factors for long-term DFS and DSS.

## INTRODUCTION

With sentinel lymph node (SLN) status being a prognostic factor, the sentinel lymph node biopsy (SLNB) has a definitive role in staging melanoma patients presenting with clinically uninvolved regional lymph nodes. As such, SLNB is nowadays implemented in the new American Joint Committee on Cancer (AJCC) staging system.<sup>1</sup> Recent data from the fourth interim analysis of the first Multicenter Selective Lymphadenectomy Trial (MSLT-I) showed significantly higher disease specific survival rates for intermediate thickness melanomas after immediate completion lymph node dissection (CLND) for occult nodal metastases confirmed by SLNB compared to nodal observation and therapeutic lymph node dissection in case of nodal recurrence. Moreover, disease free survival rates are higher in patients who underwent SLNB compared to patients with wide local excision (WLE) and nodal observation alone.<sup>2</sup>

Published data with respect to the long term results of the SLNB in melanoma patients in a single center, surpassing a median follow-up of 5 years, are rare.

In 1995 the SLNB procedure has been introduced at the University Medical Center Groningen.<sup>3</sup> The aim of the study was to gain insight in the long-term results of the SLNB staging procedure regarding detection, complication rates, patient survival rates and prognostic factors using the 7<sup>th</sup> American Joint Committee on Cancer melanoma staging manual.

## PATIENTS AND METHODS

In the period may 1995-december 2009 a total of 450 patients, 231 female (51%) and 219 male patients (49%), median age 53.2 (mean 52.5, range 11-84) years, presenting with stage I/II cutaneous melanoma ( $\geq 1.0$  mm) were treated by WLE and SLNB as a staging procedure at the University Medical Center Groningen. The study protocol was approved by the hospital's Institutional Review Board.

### ***SLNB technique***

All patients were admitted to the hospital to undergo a SLNB, wide local excision and, if indicated, a CLND. The SLNB procedure at our institution has been described in detail previously.<sup>3</sup> Excision specimens were sent for routine histopathological analysis with haematoxylin-eosin (HE) staining. Specific immunohistochemical staining was performed on HE-negative specimens for the protein S100, the melanoma-associated monoclonal antibody HMB45 and antibodies targeted to the MART-1/Melan-A antigen on melanoma cells. If histopathological examination of the sentinel lymph node revealed metastatic melanoma tissue, then all those patients were advised to undergo a CLND of the involved regional lymph node basin. Axillary lymph node dissection comprised Level I-III axillary dissection with preservation of the pectoralis minor muscle. In the case of a tumor-positive SLN in the groin, superficial and deep groin lymph node dissections were performed, in which the femoroinguinal lymph nodes and the lymph nodes along the iliac artery and vein were excised, together with the obturator lymph nodes. After superficial lymphadenectomy, the sartorius muscle was freed from its attachment to the anterior superior iliac spine, moved in a medial direction, and fixed to the ligament of Poupart. Since 2002, patients with HE-negative and immunohistochemical-positive sentinel lymph nodes underwent superficial lymphadenectomy alone. If additional positive lymph nodes were found in the resection specimen, deep groin dissection (iliac and obturator nodal dissection) was performed. Neck dissections comprised cervical or posterior lymph node dissection

with the standard surgical procedure. Since 2005 the UMCG participates in the second Multicenter Selective Lymphadenectomy Trial (MSLT-II), which randomizes patients between CLND or nodal observation by ultrasonography of the involved nodal basin in case of a tumor-positive SLN.<sup>4</sup>

### ***Statistical analysis***

Disease Free Survival (DFS), Overall Survival (OS) and Disease Specific Survival (DSS) were calculated using any recurrence (DFS), death due to any cause (OS) and death due to melanoma (DSS) as events. Follow-up time was defined as the time interval between excision of the primary melanoma and either recurrence or death or last day of clinical follow-up. Univariate and multivariable Cox Proportional Hazard Analyses were used to assess factors associated with survival. Any variable with  $p < 0.05$  in the univariate analyses was entered in the multivariable model. Proportional hazard assumption was tested, as well as tests for interaction. Kaplan Meier (KM) curves were constructed according to SN status for each survival analysis. Besides, follow-up was truncated at 1, 3, 5, 7 and 10 years to assess Hazard Ratio's (HR) for SLN status for each of those years, adjusted for age, sex, ulceration, Breslow thickness, Clark level and localization of the primary melanoma. P-values  $< 0.05$  were considered statistically significant.

## RESULTS

### ***Clinical and pathological features***

The clinical and pathological characteristics are summarized in Table 1. Notably, in the tumor-positive sentinel lymph node group the primary melanomas were significantly thicker. There was a trend



towards male predominance in this group ( $p=0.07$ ). The median follow-up duration for all patients in this study was 64.8 (range 2.4-173.8) months with a mean of 75.3 months.

### ***SLN identification***

At least one sentinel lymph node could be located in 447 out of the 450 patients (99.3%) and a total number of 1008 nodes were harvested in the whole group (mean 2.24, median 2.00, range 0-7).

These nodes were identified in 536 basins, mean 1.20 per patient. The sentinel lymph nodes were identified by both blue dye and probe in 425 basins, in 107 basins by probe alone and in 4 basins by dye alone.

### ***SLNB mortality and morbidity***

None of the patients undergoing WLE and SLNB died as a result of the procedure. Post-operative complications occurred in 31 patients (6.9%). Most complications were minor, e.g. wound infections, post-operative bleedings and seromas. Two anaphylactic reactions to blue-dye were reported (0.4%).

### ***SLN status***

A tumor-positive SLN was found in 140 patients (31.1%). In 100 cases (71.4%) the HE-stained slides accounted for the diagnosis and the remainder of tumor-positive SLN was provided by IHC in 34 cases and by RT-PCR in 6 patients. In 85% of SLN positive patients ( $n=119$ ) CLND was performed and additional positive non-sentinel lymph nodes were found in 22.7% of cases ( $n=27$ ).

The remaining 21 SLN tumor-positive patients had no CLND; eleven patients were randomized for observation in the MSLT-II, eight patients refused surgery (five patients refused because of very small

tumor load in the SLN; RT-PCR positivity or isolated tumor cells) and in two patients an interval node was tumor-positive, making CLND technically impossible.

These 21 patients were excluded from the analysis of recurrences and prognostic factors for survival. DFS, OS and DSS were therefore calculated on 429 patients as well as the univariate and multivariable Cox Proportional Hazard Analyses, KM curves and HR for SLN status. However, the false-negative rate was calculated over the whole group (450 patients).

### **Recurrences**

Recurrent disease occurred in 124 patients (28.9%) during a median follow-up of 68.4 (range 2.4-173.8) months; 55 patients in the SLN positive group (55/119; 46.2%) and in 69 patients in the SLN negative group (69/310; 22.3%;  $p < 0.001$ ). The distribution of first recurrences in this patient cohort is shown in Table 1. In the SLN positive group ( $n=119$ ) there were initially 10 local recurrences, 18 in-transit metastases and 7 regional lymph node recurrences. Sixteen of these 35 patients (45.7%) progressed to distant metastases. Another 20 patients presented with distant metastases as first recurrence.

In the SLN negative group 17 patients developed recurrence in the regional node field, resulting in a false-negative rate of 11% ( $17/(17+140)$ ). Nine patients presented with local recurrent disease and 9 patients developed in-transit metastases as first type of recurrence. Twenty of these 35 patients (57.1%) progressed, in the course of the disease, to distant metastases. Another 34 patients had distant metastases as first recurrence.

Six patients (28.6%) recurred from the 21 SLN tumor-positive patients who did not undergo CLND.

The sites of first recurrences of these patients were as follows: one patient with in-transit metastases, three patients with nodal relapses, and two patients with distant metastases.

**Survival**

SLN tumor status was significantly associated with all aspects of survival (Table 2). The median follow-up time of DFS was 4.9 (0.2-14.5) years. DFS at 10 years was 71% for SLN negative patients compared with 48% for SLN positive patients ( $p<0.001$ ). The median follow-up time of OS and DSS was 5.7 (0.2-14.5) years. DSS at 10 years was 77% for SLN negative patients compared with 60% for SLN positive patients ( $p<0.001$ ), for OS the 10-year survival percentages are 70% and 55% respectively ( $p=0.003$ ). Median follow-up time for deceased patients was 40.5 months (5.5-147.3) and for the survivors 93.4 months (2.4-173.8). Survival curves are shown in Figure 1.

**Prognostic factors**

Prognostic factors were calculated for DFS, DSS and OS and are shown in Table 2. On multivariate analysis the strongest prognostic factors for DFS were presence of ulceration of the primary cutaneous melanoma and SLN positivity (HR of 2.2 and 2.3,  $p<0.001$  respectively). The same results were observed for DSS, with a HR associated with presence of ulceration of 2.1 ( $p=0.001$ ) and a HR associated with SLN positivity of 2.0 ( $p=0.002$ ). For OS the strongest independent prognostic factor was age above 50 years (HR 2.2,  $p<0.001$ ), followed by presence of ulceration (HR 1.9,  $p=0.001$ ) and SLN positivity (HR 1.7,  $p=0.009$ ). Breslow tumor thickness groups (1-2mm; 2-4 mm and >4mm) could only be identified as an independent prognostic factor for DFS in this cohort. There was a trend towards significance for OS. Table 3 shows that over time the HR for events remains high for SLN positive patients.

## DISCUSSION

***Prognostic factors and survival***

This long term follow-up study of prognostic factors in cutaneous melanomas reveals that a tumor-positive SLN is a strong prognostic factor for DFS, OS and DSS even after 10 year follow-up. Regional lymph node status has been recognized as one of the most powerful indicators of patient outcome. On multivariate analysis we observed that ulceration, lymph node status, and age were predictive of DFS, OS and DSS. Ulceration and SLN status were the strongest predictive factors in this study. This finding is comparable with a recently report from Mays et al<sup>5</sup>. We found that patients with increased age have a worse prognosis than younger patients. Recently published data by Rutkowski et al. also show that melanoma patients  $\geq 65$  years of age are characterized by a higher primary tumor stage and worse prognosis in the presence of regional lymph node metastases than younger patients.<sup>6</sup> Tumor mitotic rate of cutaneous melanoma was not included in the analyses because of a lack of data in referral cases.

***SLN identification and false-negative rate***

In the present study we found a sentinel lymph node detection rate of 99.3%. This is comparable with other studies which reported success rates between 95.3% and 100%.<sup>7-9</sup> Failure to detect the SLN occurred in the early years of practice and in only three patients with all head and neck melanomas.<sup>10</sup>

The false-negative rate for SLNB is defined as the proportion of node-positive patients who had a tumor-negative SLN. However, the number of patients who have a tumor-negative sentinel node result, who subsequently develop clinically positive nodes in the dissected regional lymph node basin, are in fact reported in the literature. These rates vary between 5-9%. The false-negative rate is

actually higher using a more proper definition:  $\{\text{patients with negative SLN with recurrent nodal disease}\} / \{\text{patients with negative SLN with recurrent nodal disease} + \text{patients with tumor-positive SLN}\}$ .<sup>11</sup> Amongst other investigators, we have found comparable results in earlier studies: in line with other studies using this definition and an earlier report from our hospital the false-negative rate in the current study is 11%.<sup>3,12</sup> Remarkably, however, the false-negative rate recently dropped to 2% in our center. Recently data from the Sunbelt Melanoma Trial by Scoggins et al. show no OS difference between patients with a false-negative SLN and patients with a true-positive SLN result.<sup>12</sup> However, the authors discuss that their finding is also somewhat at odds with the MSLT, which showed that the survival of patients who developed clinically detected nodal metastases in the wide local excision-only group was worse than those who had nodal metastases detected by the SLNB.

#### ***Tumor metastases in the SLN***

This single center study shows a remarkably high percentage (31%) of SLN positive patients. In comparison with the earlier report based on our database, this percentage has risen from 24% to 31%. One explanation for this higher rate of tumor-positive SLNs might be the increased experience with and the improved knowledge of the SLNB procedure for both the surgical oncologist and the pathologist. Median Breslow thickness has decreased from 2.5 to 2.4. The presence of ulceration has also fallen from 40% to 36%. Median age has dropped from 57 to 53 years. This last factor may be another possible explanation for the increase in tumor-positive SLNs because the older patients have altered lymphatic function.<sup>13</sup> This 'lymphatic dysfunction' may modify metastatic patterns and can possibly play a role in the reduced nodal positivity rate in the elderly.

Compared to other studies, the high Breslow thickness and ulceration rate in our study group are explanatory factors for the high percentage of tumor-positive SLNs. These two variables are significantly associated with the likelihood of detecting metastases in the SLN: the higher the Breslow

thickness and ulceration rate the more tumor-positive SLNs are found.<sup>14</sup> Several studies even show that the percentage of tumor-positive SLN may reach 35-47% in patients with T4 tumors (Breslow > 4.0 mm).<sup>15-17</sup>

However, as reported by Mocellin, these variables (Breslow thickness and ulceration rate) do not address the issue of whether or not this association is of any clinical relevance or practical value (i.e., whether this statistical association translates into a combination of negative predictive value, error rate, and sentinel node reduction rate of clinical relevance). As mentioned earlier, the final results of the MSLT-I play an important role in these predictive models: the intermediate thickness (1.2-3.5 mm) SLNB group had a better survival.

In this study group 21 patients did not undergo CLND despite of a tumor-positive SLN. Hopefully, the MSLT-II will finally answer the question whether observation after tumor-positive SLN has the same DFS and DSS rates as tumor-positive SLN followed by CLND. Meanwhile, the Rotterdam criteria (<0.1mm, 0.1-1.0mm and >1.0mm for the largest diameter of the largest metastasis in the SLN) showed that a CLND might not be indicated when the tumor load in the SLN is < 0.1 mm.<sup>18</sup> These data need to be supported by other, larger studies which are currently underway.

### ***SLNB morbidity***

The complication rate of SLNB (6.9%) in our institution is comparable with the literature. Although much research on SLNB in melanoma has been published, little focus has been on complication rates. The well known large studies have been reporting percentages of 4.6% (by the Sunbelt Melanoma trial) and 10.1% (by the Multicenter Selective Lymphadenectomy Trial I).<sup>8,19</sup> Major complications did not occur, except for anaphylactic reaction to blue dye in two patients (0.4%). A recent study observed a comparable incidence of patent blue reactions of 0.5% in SLNBs in patients with breast cancer.<sup>20</sup> In the past years we have performed studies on morbidity after axillary and inguinal SLNB

with or without CLND. There were more wound infections in the SLNB group followed by CLND and it was therefore recommended using prophylactic antibiotic treatment in the case of CLND after tumor-positive SLN.<sup>21,22</sup> Although there is a slight risk of limb edema, the lymphedema after CLND is less than therapeutic lymph node dissection for palpable nodal disease according to data from the MSLT Cooperative Group.<sup>23</sup> Hospital length of stay was also significantly longer in the delayed CLND compared to the early CLND. So early CLND, in addition to a tumor-positive SLN, is not only of prognostic value and beneficial in staging regional nodes, selecting patients for adjuvant therapy or clinical trials and above all, improving melanoma-specific survival, it also decreases both lymphedema and hospital length of stay. At our center we have studied quality of life (QoL) in melanoma survivors who underwent SLNB. It was found that QoL after axillary or inguinal SLNB with or without CLND was better than that in a norm group of the general population. Patients who underwent CLND in the axilla after SLNB reported most QoL-related problems.<sup>24</sup>

In conclusion, the SLNB, which is now incorporated in the latest AJCC Melanoma staging manual (7<sup>th</sup> edition), is a safe procedure with a low short- and long-term morbidity with an acceptable low false-negative rate. Long-term follow up after 10 years show that tumor-positive SLN patients have a worse DFS, DSS and OS than tumor-negative SLN patients. Ulceration and SLN status are the strongest prognostic factors for long-term DFS and DSS. SLNB will provide patients with information regarding their disease status. Early CLND might improve DSS and reduce treatment related morbidity compared to delayed CLND according to recently published MSLT-I data.<sup>2,23</sup> Participation of patients with primary melanoma and tumor-positive SLNs in the MSLT-II (which randomizes SLN positive patients to undergo CLND or not) and the European Organisation for Research and Treatment of Cancer melanoma group registration trial (MINITUB, which aims for patients with identified minimal SLN tumor burden to not undergo CLND) is essential to make any further progress in the treatment of primary melanomas.<sup>4,25</sup>

### Acknowledgements

The authors thank Mrs. C. Lemstra, nuclear medicine technician from the Department of Nuclear Medicine and Molecular Imaging, and the melanoma nurse practitioners Mrs. A. Prozee and Mr. K.M. Meijer from the Department of Surgical Oncology for their dedicated care for the melanoma patients at the UMCG.

The authors declare no conflicts of interest.

ACCEPTED MANUSCRIPT



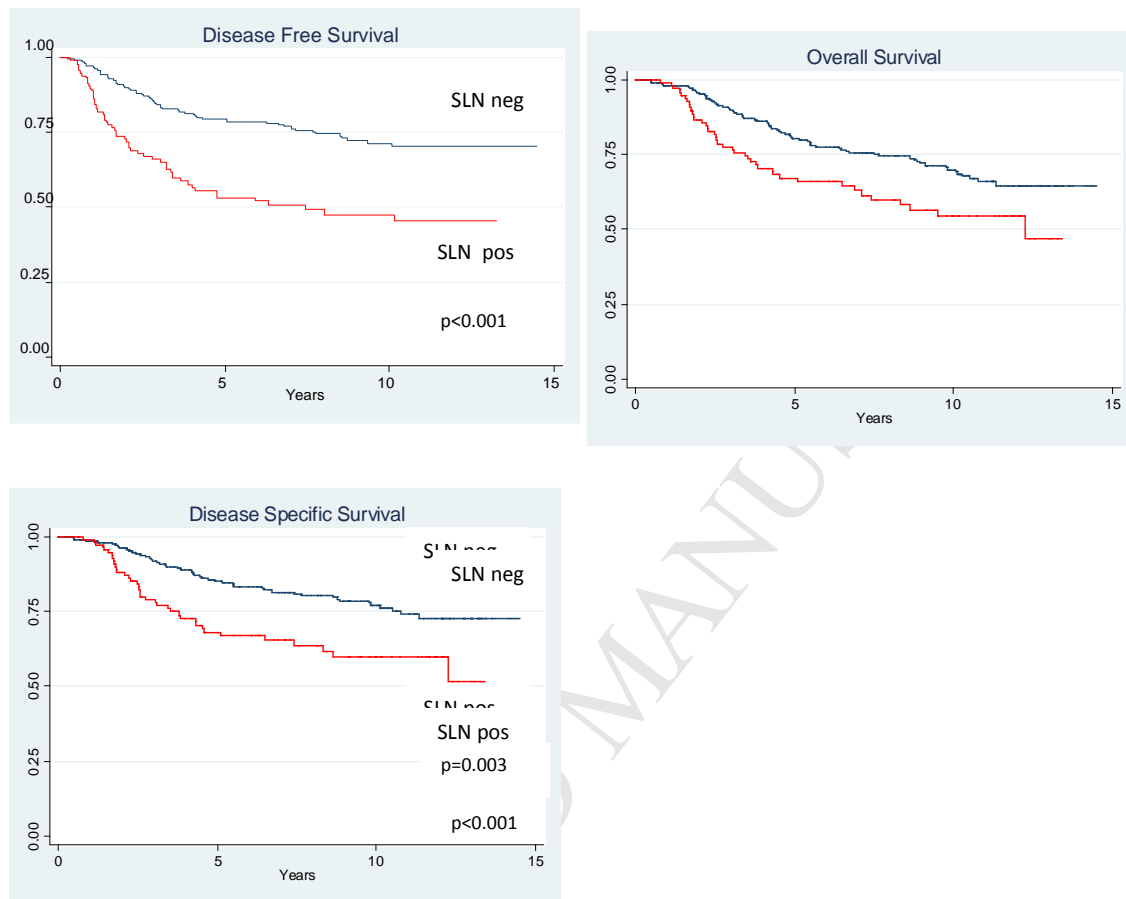
## References

1. Balch CM, Gershenwald JE, Soong SJ et al. Final version of 2009 AJCC melanoma staging and classification. *J Clin Oncol* 2009; **27**: 6199-206.
2. Morton DL, Thompson JF, Cochran AJ, Elashoff R. Sentinel node biopsy and immediate lymphadenectomy for occult metastases versus nodal observation and delayed lymphadenectomy for nodal recurrence: fourth interim analysis of MSLT-1. *Ann Surg Oncol* 2010; **17 suppl 1**: S22-S23.
3. Doting MH, Hoekstra HJ, Plukker JT et al. Is sentinel node biopsy beneficial in melanoma patients? A report on 200 patients with cutaneous melanoma. *Eur J Surg Oncol* 2002; **28**: 673-8.
4. National Cancer Institute. MSLT-II protocol. Available at: <http://clinicaltrialsfeeds.org/clinical-trials/show/NCT00297895>. Accessed March 2011.
5. Mays MP, Martin RC, Burton A et al. Should all patients with melanoma between 1 and 2 mm Breslow thickness undergo sentinel lymph node biopsy? *Cancer* 2010; **116**: 1535-44.
6. Rutkowski P, Nowecki ZI, Zdzienicki M et al. Cutaneous melanoma with nodal metastases in elderly people. *Int J Dermatol* 2010; **49**: 907-13.
7. McMasters KM, Noyes RD, Reintgen DS et al. Lessons learned from the Sunbelt Melanoma Trial. *J Surg Oncol* 2004; **86**: 212-23.

8. Morton DL, Cochran AJ, Thompson JF et al. Sentinel node biopsy for early-stage melanoma: accuracy and morbidity in MSLT-I, an international multicenter trial. *Ann Surg* 2005; **242**: 302-11.
9. van Akkooi AC, de Wilt JH, Verhoef C et al. High positive sentinel node identification rate by EORTC melanoma group protocol. Prognostic indicators of metastatic patterns after sentinel node biopsy in melanoma. *Eur J Cancer* 2006; **42**: 372-80.
10. Doting EH, de Vries M, Plukker JT et al. Does sentinel lymph node biopsy in cutaneous head and neck melanoma alter disease outcome? *J Surg Oncol* 2006; **93**: 564-70.
11. Nieweg OE. False-negative sentinel node biopsy. *Ann Surg Oncol* 2009; **16**: 2089-91.
12. Scoggins CR, Martin RC, Ross MI et al. Factors associated with false-negative sentinel lymph node biopsy in melanoma patients. *Ann Surg Oncol* 2010; **17**: 709-17.
13. Conway WC, Faries MB, Nicholl MB et al. Age-related lymphatic dysfunction in melanoma patients. *Ann Surg Oncol* 2009; **16**: 1548-52.
14. Mocellin S, Thompson JF, Pasquali S et al. Sentinel node status prediction by four statistical models: results from a large bi-institutional series (n = 1132). *Ann Surg* 2009; **250**: 964-9.
15. Essner R, Chung MH, Bleicher R et al. Prognostic implications of thick ( $\geq 4$ -mm) melanoma in the era of intraoperative lymphatic mapping and sentinel lymphadenectomy. *Ann Surg Oncol* 2002; **9**: 754-61.
16. Gajdos C, Griffith KA, Wong SL et al. Is there a benefit to sentinel lymph node biopsy in patients with T4 melanoma? *Cancer* 2009; **115**: 5752-60.

17. Scoggins CR, Bowen AL, Martin RC et al. Prognostic information from sentinel lymph node biopsy in patients with thick melanoma. *Arch Surg* 2010; **145**: 622-7.
18. van der Ploeg AP, van Akkooi AC, Schmitz PI et al. EORTC Melanoma Group sentinel node protocol identifies high rate of submicrometastases according to Rotterdam Criteria. *Eur J Cancer* 2010; **46**: 2414-21.
19. Wrightson WR, Wong SL, Edwards MJ et al. Complications associated with sentinel lymph node biopsy for melanoma. *Ann Surg Oncol* 2003; **10**: 676-80.
20. Hunting AS, Nopp A, Johansson SG et al. Anaphylaxis to Patent Blue V. I. Clinical aspects. *Allergy* 2010; **65**: 117-23.
21. de Vries M, Vonkeman WG, van Ginkel RJ, Hoekstra HJ. Morbidity after axillary sentinel lymph node biopsy in patients with cutaneous melanoma. *Eur J Surg Oncol* 2005; **31**: 778-83.
22. de Vries M, Vonkeman WG, van Ginkel RJ, Hoekstra HJ. Morbidity after inguinal sentinel lymph node biopsy and completion lymph node dissection in patients with cutaneous melanoma. *Eur J Surg Oncol* 2006; **32**: 785-9.
23. Faries MB, Thompson JF, Cochran A et al. The impact on morbidity and length of stay of early versus delayed complete lymphadenectomy in melanoma: results of the Multicenter Selective Lymphadenectomy Trial (I). *Ann Surg Oncol* 2010; **17**: 3324-9.
24. de Vries M, Hoekstra HJ, Hoekstra-Weebers JE. Quality of life after axillary or groin sentinel lymph node biopsy, with or without completion lymph node dissection, in patients with cutaneous melanoma. *Ann Surg Oncol* 2009; **16**: 2840-7.
25. European Organisation for Research and Treatment of Cancer. MiniTub protocol. Available at: <http://www.melanomagroup.eu/content/view/101/117/>. Accessed March 2011.

Figure 1: Kaplan-Meier survival estimates for Disease Free Survival ( $p<0.001$ ), Overall Survival ( $p=0.003$ ) and Disease Specific Survival ( $p<0.001$ ) according to sentinel lymph node (SLN) status (N=429).



**Table 1: Clinical and pathological features and distribution of first recurrences (N=429). Percentages in brackets.**

Characteristics		All patients N = 429	SLN positive N=119	SLN negative N = 310	p-values
<b>Sex</b>	Male	208 (48.5)	66 (55.5)	142 (45.8)	0.07
	Female	221 (51.5)	53 (44.5)	168 (54.2)	
<b>Age</b>	Mean/median	52.6/53.8	53.1/52.4	52.4/54.4	0.67
	<50 years	182 (42.4)	51 (42.9)	130 (41.9)	
	≥50 years	247 (57.6)	68 (57.1)	180 (59.1)	
<b>Breslow (mm)</b>	Mean/median	3.0/2.4	3.4/3.0	2.9/2.2	0.03
	1.00-2.00	167 (38.9)	25 (21.0)	142 (45.8)	
	2.01-4.00	187 (43.6)	69 (58.0)	118 (38.1)	
	>4.00	75 (17.5)	25 (21.0)	50 (16.1)	
<b>Clark level</b>	II+III	81 (18.9)	18 (15.1)	64 (20.6)	0.37
	IV+V	342 (79.7)	99 (83.2)	242 (78.1)	
	Unknown	6 (1.4)	2 (1.7)	4 (1.3)	
<b>Ulceration</b>	Present	155 (36.1)	49 (41.2)	106 (34.2)	0.13
	Absent	274 (63.9)	70 (58.8)	204 (65.8)	
<b>Histologic subtype</b>	SSM	239 (55.7)	65 (54.6)	174 (56.1)	0.13
	NM	145 (33.8)	39 (32.8)	106 (34.2)	
	ALM	12 (2.8)	4 (3.4)	8 (2.6)	
	Others	28 (6.5)	9 (7.6)	19 (6.1)	
	Unknown	5 (1.2)	2 (1.7)	3 (1.0)	
<b>Localization</b>	Axial	209 (48.7)	62 (52.1)	147 (47.4)	0.39
	Extremities	220 (51.3)	57 (47.9)	163 (52.6)	
<b>SLN status</b>	Positive	119 (27.7)	NA	NA	NA
	Negative	310 (72.3)			
<b>Type of first recurrence</b>	Local recurrence	19 (15.3)	10 (18.2)	9 (13.0)	<0.001
	In-transit metastases	27 (21.8)	18 (32.7)	9 (13.0)	
	Regional lymph node	24 (19.4)	7 (12.7)	17 (24.6)	
	Distant	54 (43.5)	20 (36.4)	34 (49.3)	
	Total	124 (100)	55 (100)	69 (100)	

SLN = Sentinel Lymph Node

Table 2: Disease Free Survival, Overall Survival and Disease Specific Survival analysis for the 429 patients at 5 and 10 years. Hazard Ratios (HR) are shown and 95%-Confidence Interval in brackets.

	Disease Free Survival						Overall Survival						Disease Specific Survival					
	Univariate				Multivariable		Univariate				Multivariable		Univariate				Multivariable	
	5yr	10yr	HR (95%CI)	p	HR (95%CI)	p	5yr	10yr	HR (95%CI)	p	HR (95%CI)	p	5yr	10yr	HR (95%CI)	p	HR (95%CI)	p
<b>Age</b>																		
<50 yrs	76.3	70.5	1	<b>0.04</b>	1	<b>0.03</b>	82.8	78.8	1	<b>&lt;0.001</b>	1	<b>&lt;0.001</b>	83.9	79.8	1	<b>0.02</b>	1	<b>0.007</b>
≥50 yrs	68.7	59.9	1.5 (1.0-2.1)		1.5 (1.0-2.2)		72.0	56.3	2.2 (1.5-3.3)		2.2 (1.5-3.4)		77.8	66.4	1.7 (1.1-2.6)		1.9 (1.1-2.9)	
<b>Sex</b>																		
Female	78.7	71.0	1	<b>0.003</b>	1	0.1	84.2	74.1	1	<b>&lt;0.001</b>	1	<b>0.03</b>	86.5	77.8	1	<b>0.004</b>	1	<b>0.07</b>
Male	64.0	57.1	1.7 (1.2-2.5)		1.4 (0.9-2.0)		67.3	56.0	2.0 (1.4-2.9)		1.6 (1.0-2.4)		72.9	65.6	1.8 (1.2-2.8)		1.5 (1.0-2.3)	
<b>Ulceration</b>																		
No	81.2	74.4	1	<b>&lt;0.001</b>	1	<b>&lt;0.001</b>	85.5	73.8	1	<b>&lt;0.001</b>	1	<b>0.001</b>	88.8	80.9	1	<b>&lt;0.001</b>	1	<b>0.001</b>
Yes	55.9	48.2	2.5 (1.7-3.6)		2.2 (1.5-3.2)		63.5	53.5	2.1 (1.4-3.0)		1.9 (1.3-2.8)		66.4	58.8	2.3 (1.5-3.5)		2.1 (1.4-3.2)	
<b>Breslow</b>																		
1.00-2.00	87.0	76.9	1	<b>0.001</b>	1	<b>0.03</b>	85.2	76.3	1	<b>0.001</b>	1	0.06	89.7	82.4	1	<b>0.003</b>	1	0.1
2.01-4.00	66.1	58.9	2.2 (1.4-3.4)		1.6 (1.0-2.5)		76.4	62.2	1.5 (1.0-2.4)		1.2 (0.7-1.8)		77.5	68.1	1.9 (1.2-3.2)		1.3 (0.8-2.4)	
>4.00	54.7	52.4	2.9 (1.8-4.9)		2.0 (1.2-3.4)		59.5	51.5	2.5 (1.5-4.0)		1.8 (1.1-2.9)		68.0	60.9	2.6 (1.5-4.7)		1.9 (1.0-3.4)	
<b>Clark level</b>																		
II+III	81.2	75.5	1	0.2			83.4	71.9	1	0.2			84.5	78.5	1	0.2		
IV+V	69.9	61.9	1.6 (1.0-2.7)				74.8	63.9	1.6 (1.0-2.7)				79.4	70.4	1.6 (0.9-3.0)			
Unknown	60.0	60.0	1.5 (0.3-6.5)				80.0	80.0	0.8 (0.1-5.8)				80.0	80.0	1.0 (0.1-7.7)			
<b>Localization</b>																		
Extremities	75.9	67.1	1	0.2			82.3	71.6	1	<b>0.02</b>	1	0.2	85.0	74.5	1	0.1		
Axial	67.4	61.9	1.3 (0.9-1.7)				69.8	58.9	1.7 (1.1-2.5)		1.3 (0.8-2.0)		74.9	70.2	1.4 (0.9-2.0)			
<b>SLN*</b>																		
Negative	79.4	71.3	1	<b>&lt;0.001</b>	1	<b>&lt;0.001</b>	80.3	70.1	1	<b>0.003</b>	1	<b>0.009</b>	85.2	77.0	1	<b>&lt;0.001</b>	1	<b>0.002</b>
Positive	53.2	47.6	2.5 (1.8-3.6)		2.3 (1.6-3.3)		67.1	54.5	1.8 (1.2-2.6)		1.7 (1.1-2.5)		68.1	59.9	2.1 (1.4-3.2)		2.0 (1.3-3.1)	

\*SLN = Sentinel Lymph Node

**Table 3: Development of Hazard Ratio (HR) for time after diagnosis according to positive SLN status (adjusted for age, sex, Breslow, Clark, localization and ulceration). 95%-Confidence Interval in brackets (N=429).**

	1 Year	3 Year	5 Year	7 Year	10 Year
<b>DFS</b>	4.1 (1.8-9.1) P=0.001	2.2 (1.4-3.4) P=0.001	2.4 (1.6-3.6) p<0.001	2.4 (1.6-3.5) p<0.001	2.3 (1.6-3.3) p<0.001
<b>OS</b>	No estimation* p=0.4	2.2 (1.2-3.9) p=0.008	1.8 (1.1-2.9) p=0.01	1.7 (1.1-2.6) p=0.02	1.8 (1.2-2.6) P=0.005
<b>DSS</b>	No estimation* p=0.6	2.5 (1.3-4.6) p=0.004	2.2 (1.4-3.6) P=0.002	2.1 (1.3-3.3) p=0.003	2.1 (1.3-3.3) P=0.001

\*no estimation of the HR due to less than 5 events

DFS = Disease Free Survival

OS = Overall Survival

DSS = Disease Specific Survival