



Resource Allocation for the French National Grid Initiative

Hélène Cordier, Gilles Mathieu

MDGS2011, August 2011 – Bordeaux, France



Context

➤ Starting point

- EGEE-EGI and ROC to french NGI creation
- Multi-disciplinary communities

➤ Service offer at the country level

- Set of services
- Sense of Quality of service

➤ Resources

- Limited (?)
- Accounted for



Goals: What do we want?

➤ We want to assess:

- How resources and services are distributed
- How needs are expressed and answered to
- What we could do better

➤ We want to have the means to:

- Apply a national scientific policy
- Better answer to user needs
- Improve service delivery to the French community



What can we do?

- **Define resource allocation principles**
 - That consider user needs and national policies
 - That stay in line with Grid specificities
- **Apply these principles**
 - Through a clear strategy at national level
 - Without interfering when not necessary



Where do we start?

➤ **Get inspiration from...**

- What was done in EGEE
- What is done in WLCG
- How it works in other sectors (e.g. HPC)
- How other NGIs do it

➤ **Build up a strategy that...**

- Makes the most of what already exists
- Takes our specificities into account



Proposed key principles

➤ **Necessity to evaluate allocation demands**

- *A priori* – How much can we allocate? Does it follow national policy?
- *A posteriori* – Have we allocated properly? Do we need to readjust?

➤ **Final decision...**

- Is taken by whom the resources belong to
- Can result in formal agreements

➤ **Necessity to define the role of the NGI**

- As a facilitator between users and providers
- As a possible point of contact and broker



Different use-cases

➤ **Depending on who the user is**

- A new user or new community
- An existing community for which we are the sole resource providers
- An existing international community

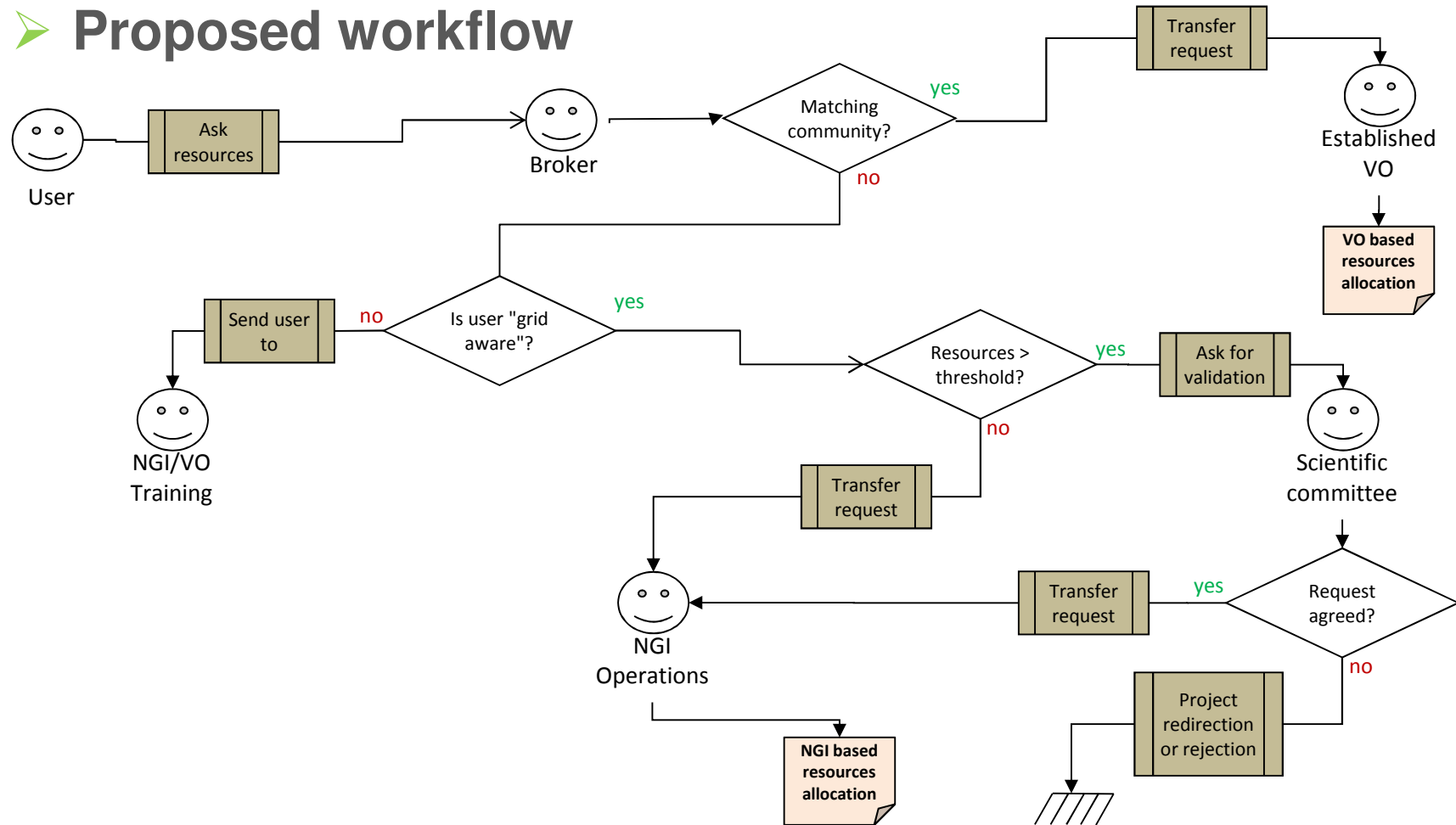
➤ **Depending on what the user wants**

- Precise needs in terms of resources
- Just "use the grid"



RA to new users

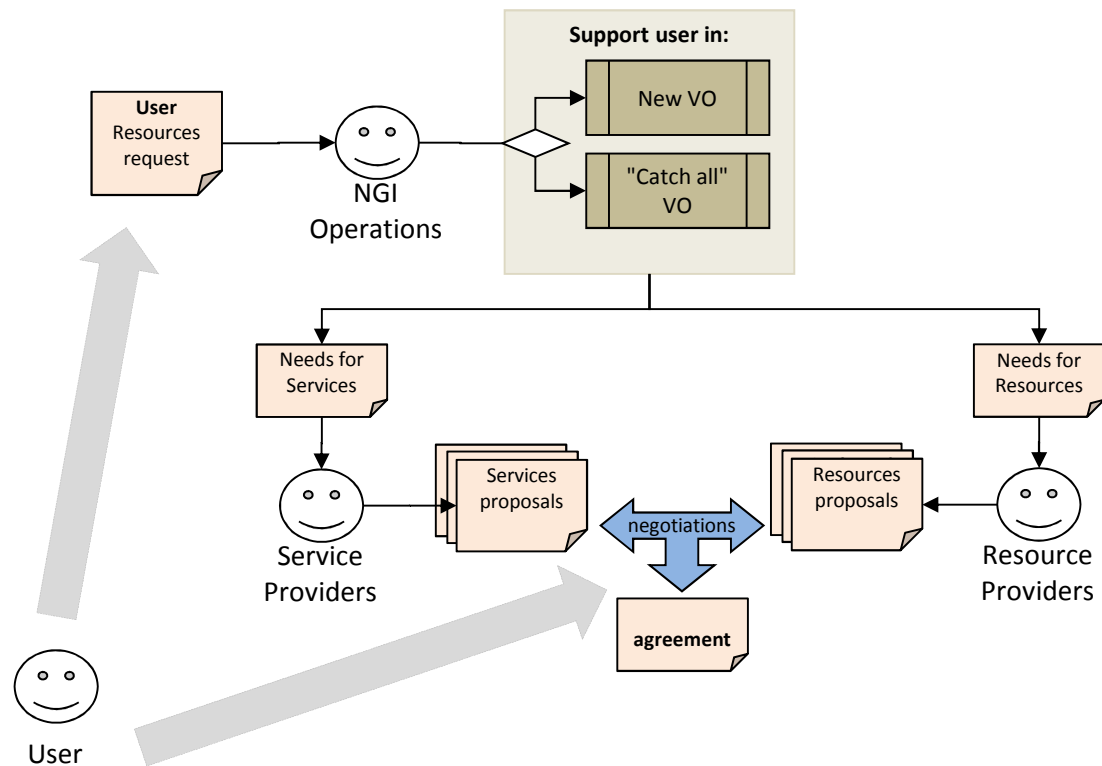
➤ Proposed workflow





RA to new users

➤ NGI based agreement





RA to new users

➤ **A posteriori analysis**

- What has been used?
- Does this answer user's needs?
- Have agreements been followed?
- Is there a need to renegotiate?



RA to established communities

➤ **With an existing allocation process**

- E.g. WLCG
- We should not interfere or conflict

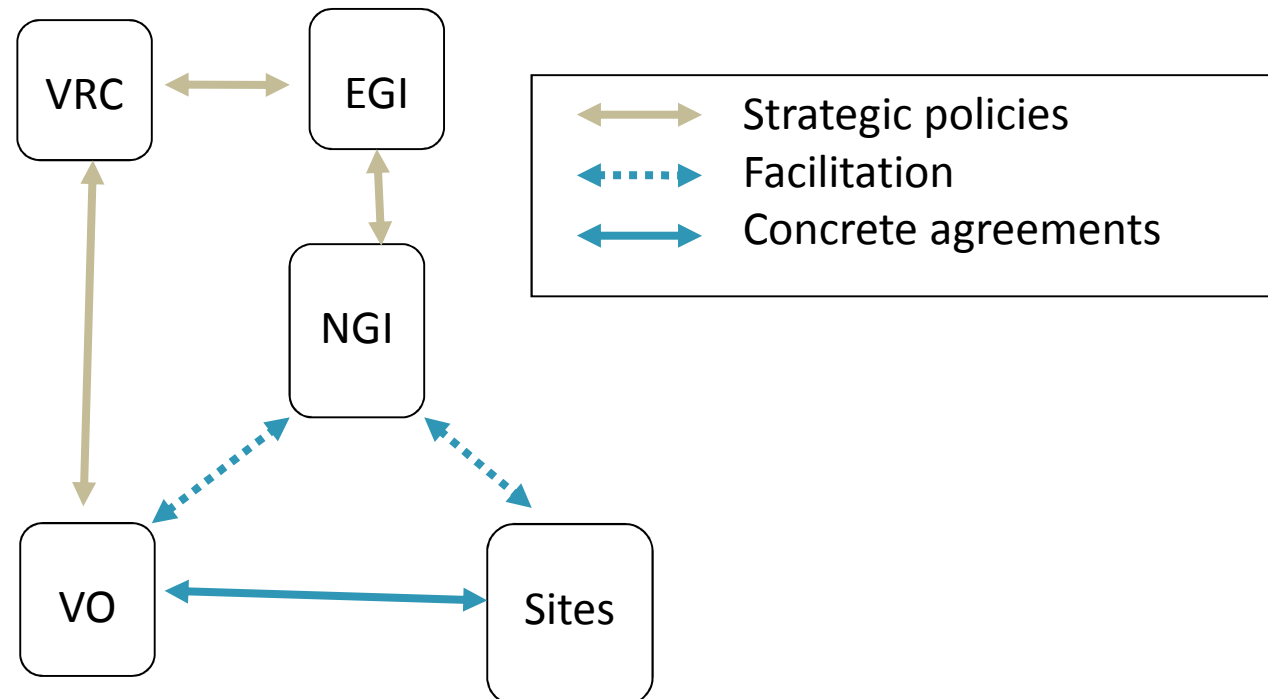
➤ **Without a formalized process**

- E.g. biomed
- We should be here to help



RA to established communities

- Place the NGI as a facilitator for resource negotiations





What about implementation?

➤ **“New user” use case**

- Recent establishment of a national VO
- Modalities of establishing a NGI point of contact

➤ **“Established communities” use case**

- Study usage of a resource negotiation tool
- Bring the discussion at EGI level
- Discuss with other NGIs and projects



What's next?

➤ RA to established communities

- Validate initial hypotheses
- Study pertinence and feasibility
 - Is something better than nothing?
 - Do we have the means to enforce our strategy?
- Initiate a wider discussion (e.g. within EGI)
- Reach an agreement with all involved parties
- Define and organize tasks



Acknowledgements : T. Szeplieniec

