



HAL
open science

Inequality amongst the wealthiest and its link with economic growth

Philip Hans Franses

► **To cite this version:**

Philip Hans Franses. Inequality amongst the wealthiest and its link with economic growth. *Applied Economics*, 2011, pp.1. 10.1080/00036846.2011.566211 . hal-00708543

HAL Id: hal-00708543

<https://hal.science/hal-00708543>

Submitted on 15 Jun 2012

HAL is a multi-disciplinary open access archive for the deposit and dissemination of scientific research documents, whether they are published or not. The documents may come from teaching and research institutions in France or abroad, or from public or private research centers.

L'archive ouverte pluridisciplinaire **HAL**, est destinée au dépôt et à la diffusion de documents scientifiques de niveau recherche, publiés ou non, émanant des établissements d'enseignement et de recherche français ou étrangers, des laboratoires publics ou privés.



Inequality amongst the wealthiest and its link with economic growth

Journal:	<i>Applied Economics</i>
Manuscript ID:	APE-2010-0293
Journal Selection:	Applied Economics
Date Submitted by the Author:	10-Jun-2010
Complete List of Authors:	Franses, Philip; Erasmus University Rotterdam, Econometric Institute
JEL Code:	I00 - General < I0 - General < I - Health, Education, and Welfare, I30 - General < I3 - Welfare and Poverty < I - Health, Education, and Welfare
Keywords:	Wealth, Inequality



1
2
3
4
5
6
7
8
9
10
11
12
13
14
15
16
17
18
19
20
21
22
23
24
25
26
27
28
29
30
31
32
33
34
35
36
37
38
39
40
41
42
43
44
45
46
47
48
49
50
51
52
53
54
55
56
57
58
59
60

Inequality amongst the wealthiest and its link with economic growth

For Peer Review

1. Introduction

Each year in the fall, the Netherlands-based magazine Quote publishes its Quote 500 ranking of the 500 wealthiest families and individuals. They started this publication in 1998, so up till now there are 12 such rankings including 2009. In this paper we study the distributional properties of these rankings, and we examine the evolution of these over time. To the best of our knowledge, these Quote 500 data have never been analyzed before. Additionally, and this is new to the literature, we correlate the properties of these distributions with real economic growth and with stock market data.

This paper is largely of an exploratory nature. We describe the features of the data, and we do so using standard and a few new techniques. One new method involves the clustering of the 500 individual ranks into a smaller set of ranks that are associated with approximately similar wealth levels. For example, we will show that for some years the 500 individual quotes can be summarized by 6 clusters with similar quotes. When doing so, we can for example conclude that the cluster with individuals with the largest wealth gets smaller over time.

The outline of our paper is as follows. In Section 2 we provide basic statistics of the wealth rankings over the years. Interestingly, the data obey so-called power laws almost perfectly. We also examine the evolution of the basic statistics over time. In Section 3 we correlate a few of the main features with real economic variables as Gross Domestic Product (GDP) growth and stock market returns. We find that more economic growth leads to more inequality amongst the wealthiest. In Section 4 we conclude this paper with a discussion of how our findings fit with the findings presented in the relevant literature.

2. Descriptive statistics of the wealth data

Each year since 1998 the magazine Quote publishes its ranking of the 500 wealthiest families or individuals in the Netherlands. Ever since 1998 the Royal Family is present in the top 10, and also well-known families like Heineken and Fentener van Vlissingen are

1
2
3 included. The way the list is compiled has been rather constant over time, so it is possible
4
5 to evaluate any tendencies over time.
6
7

8 9 **Basic statistics**

10
11
12 We created a database with all the 500 entries each year, and in total there are more than
13
14 900 entries over the 12 years of data, covering 1998 to and including 2009. Hence, each
15
16 year there are new entries and there are exists. Sometimes individuals disappear from the
17
18 list for a while, and then re-enter a few years later. We recalculated the wealth figures in
19
20 1998 to 2001 in terms of euros, as before 2002 the figures were given in guilders.
21
22

23
24 Insert Figure 1 about here

25
26 Insert Table 1 about here
27

28
29 In Table 1 we give a few basic summary statistics of the distribution for each of
30
31 the twelve years. As is also obvious from the graph in Figure 1, for the data for 2004, the
32
33 distributions of the wealth data are extremely skewed. The means and the medians in
34
35 Table 1 are very different, and also the difference between the maximum values and the
36
37 minimum values is large. In the period 1998-2009 there are two episodes with less than
38
39 average economic growth, and these are around 2001-2003 and 2009. These episodes are
40
41 also reflected by the numbers in Table 1, where the mean, median, minimum and
42
43 maximum are clearly smaller in those periods than in other periods. The maximum value
44
45 across all years and individuals is observed for 2008 with a value of 24100 million euros.
46
47 To give an impression of the sheer size of this wealth of about 24 billion euros, it is good
48
49 to know that annual GDP in the Netherlands in the observed time frame is around 400 to
50
51 500 billion euros. Finally, Table 1 shows that the distribution of wealth is not constant
52
53 over the years, and major changes in means, medians and standard deviations can occur.
54
55

56
57
58
59
60
61
62
63
64
65
66
67
68
69
70
71
72
73
74
75
76
77
78
79
80
81
82
83
84
85
86
87
88
89
90
91
92
93
94
95
96
97
98
99
100
101
102
103
104
105
106
107
108
109
110
111
112
113
114
115
116
117
118
119
120
121
122
123
124
125
126
127
128
129
130
131
132
133
134
135
136
137
138
139
140
141
142
143
144
145
146
147
148
149
150
151
152
153
154
155
156
157
158
159
160
161
162
163
164
165
166
167
168
169
170
171
172
173
174
175
176
177
178
179
180
181
182
183
184
185
186
187
188
189
190
191
192
193
194
195
196
197
198
199
200
201
202
203
204
205
206
207
208
209
210
211
212
213
214
215
216
217
218
219
220
221
222
223
224
225
226
227
228
229
230
231
232
233
234
235
236
237
238
239
240
241
242
243
244
245
246
247
248
249
250
251
252
253
254
255
256
257
258
259
260
261
262
263
264
265
266
267
268
269
270
271
272
273
274
275
276
277
278
279
280
281
282
283
284
285
286
287
288
289
290
291
292
293
294
295
296
297
298
299
300
301
302
303
304
305
306
307
308
309
310
311
312
313
314
315
316
317
318
319
320
321
322
323
324
325
326
327
328
329
330
331
332
333
334
335
336
337
338
339
340
341
342
343
344
345
346
347
348
349
350
351
352
353
354
355
356
357
358
359
360
361
362
363
364
365
366
367
368
369
370
371
372
373
374
375
376
377
378
379
380
381
382
383
384
385
386
387
388
389
390
391
392
393
394
395
396
397
398
399
400
401
402
403
404
405
406
407
408
409
410
411
412
413
414
415
416
417
418
419
420
421
422
423
424
425
426
427
428
429
430
431
432
433
434
435
436
437
438
439
440
441
442
443
444
445
446
447
448
449
450
451
452
453
454
455
456
457
458
459
460
461
462
463
464
465
466
467
468
469
470
471
472
473
474
475
476
477
478
479
480
481
482
483
484
485
486
487
488
489
490
491
492
493
494
495
496
497
498
499
500
501
502
503
504
505
506
507
508
509
510
511
512
513
514
515
516
517
518
519
520
521
522
523
524
525
526
527
528
529
530
531
532
533
534
535
536
537
538
539
540
541
542
543
544
545
546
547
548
549
550
551
552
553
554
555
556
557
558
559
560
561
562
563
564
565
566
567
568
569
570
571
572
573
574
575
576
577
578
579
580
581
582
583
584
585
586
587
588
589
590
591
592
593
594
595
596
597
598
599
600
601
602
603
604
605
606
607
608
609
610
611
612
613
614
615
616
617
618
619
620
621
622
623
624
625
626
627
628
629
630
631
632
633
634
635
636
637
638
639
640
641
642
643
644
645
646
647
648
649
650
651
652
653
654
655
656
657
658
659
660
661
662
663
664
665
666
667
668
669
670
671
672
673
674
675
676
677
678
679
680
681
682
683
684
685
686
687
688
689
690
691
692
693
694
695
696
697
698
699
700
701
702
703
704
705
706
707
708
709
710
711
712
713
714
715
716
717
718
719
720
721
722
723
724
725
726
727
728
729
730
731
732
733
734
735
736
737
738
739
740
741
742
743
744
745
746
747
748
749
750
751
752
753
754
755
756
757
758
759
760
761
762
763
764
765
766
767
768
769
770
771
772
773
774
775
776
777
778
779
780
781
782
783
784
785
786
787
788
789
790
791
792
793
794
795
796
797
798
799
800
801
802
803
804
805
806
807
808
809
810
811
812
813
814
815
816
817
818
819
820
821
822
823
824
825
826
827
828
829
830
831
832
833
834
835
836
837
838
839
840
841
842
843
844
845
846
847
848
849
850
851
852
853
854
855
856
857
858
859
860
861
862
863
864
865
866
867
868
869
870
871
872
873
874
875
876
877
878
879
880
881
882
883
884
885
886
887
888
889
890
891
892
893
894
895
896
897
898
899
900
901
902
903
904
905
906
907
908
909
910
911
912
913
914
915
916
917
918
919
920
921
922
923
924
925
926
927
928
929
930
931
932
933
934
935
936
937
938
939
940
941
942
943
944
945
946
947
948
949
950
951
952
953
954
955
956
957
958
959
960
961
962
963
964
965
966
967
968
969
970
971
972
973
974
975
976
977
978
979
980
981
982
983
984
985
986
987
988
989
990
991
992
993
994
995
996
997
998
999
1000

1
2
3
4
5
6
7
8
9
10
11
12
13
14
15
16
17
18
19
20
21
22
23
24
25
26
27
28
29
30
31
32
33
34
35
36
37
38
39
40
41
42
43
44
45
46
47
48
49
50
51
52
53
54
55
56
57
58
59
60

The changes in the distributions can also be observed from the numbers in Table 2, which concern the individual changes. For example, in 1999 there are 418 families and individuals who were also on the list in 1998, and the mean percentage change in their wealth is 27.8%. The median is usually smaller than the mean, which here says that there is a distribution skewed to the right. Indeed, each new year more individuals have more wealth and those who substantially lost their wealth will more likely drop out from the list. Table 2 further shows that the individual differences can be quite large. Also, entry and exit is in between 25 to 50, with the largest dropout in 1999, 2000 and 2001, which may have to do with the dotcom crisis in those years. Finally, the exceptional crisis year of 2009 is reflected by an average decrease in wealth of about 9%.

Insert Table 3 about here

Insert Figure 2 about here

To get a first impression of how the distributions may change over time, we run a regression of the individual wealth in year T on that in year T-1. The number of data points is the same as those reported in Table 2, and hence the regressions include 418 to 476 observations for 1998 to 2009, respectively. The results are presented in Table 3, and it is clear that the distributions change over time. Indeed, when the distributions would be most similar, then the intercept should be zero and the slope parameter should be equal to one. Comparing the estimates in Table 3 with their standard errors, we see that only for the years 2006 and 2007 the distributions do not differ much from those in the years before. The final column gives the R^2 for each of the regressions, and clearly the fit is quite high. Hence, there seems to be some information in year T-1 that can be used to forecast the data in year T. A graphical illustration of this feature is presented in Figure 2, where the regression line approximates the 45 degree line.

Power laws

An alternative way to summarize the data amounts to fitting a distribution to the data. In other studies where wealth data are analyzed empirically, it has been documented that

1
2
3 such data can well be described by a Pareto distribution or more in general, by a power
4 law, see for example Persky (1992) and Davies and Shorrocks (2000). Castaldi and
5 Milakovic (2007) study the Forbes 400 list (which lists the 400 wealthiest American
6 families and individuals) and they find supportive evidence for the presence of a power
7 law, see also Levy and Solomon (1997). In brief, a power law implies that there is a link
8 between the wealth value and the rank on the list. The (slightly more strict) law of Zipf
9 states that the first ranked has twice as much wealth as the second ranked, and that this
10 second ranked has twice as much wealth as the number four on the list. Mathematically
11 this implies that there is a linear link between the (natural) logarithm of wealth and the
12 (natural) logarithm of the rank. A very readable survey of power laws is given in
13 Newman (2005).
14
15
16
17
18
19
20
21
22
23

24
25 Insert Figure 3 about here

26
27 Insert Table 4 about here

28
29
30 In Figure 3, which consists of six panels, each covering two years of data, we
31 depict the correlation between the log of wealth and the log of the rank. The graphs are
32 quite striking in the sense that the scatters indeed suggest linear links for all years. We
33 also see that the distributions change over time, as sometimes the lines do not overlap.
34
35
36

37 To quantify the precise relation, we regress the log of wealth on the log of the
38 rank for each of the twelve years, and the main results are presented in Table 4. Of course,
39 the regression line would be the least precise in the upper tail of the distribution, see the
40 discussion on the proper estimators in Castaldi and Milakovic (2007), but for our
41 purposes the least squares estimate of the regression line will suffice. The estimates of the
42 slope are all around -1, with the largest absolute values in 1998, 1999 and 2006, and the
43 smallest absolute values in 2001-2004. The R^2 values of the regression line are all very
44 close to 1, and hence the fit is very good. So, we see that also the Quote 500 distributions
45 closely follow a power law. Note that the larger the absolute value of the slope is, the
46 larger is the inequality of wealth in the sense that the difference between top values and
47 bottom values of wealth is larger. As could be expected from the various panels of Figure
48 3, the power law holds for all years, even though the distributions changes over time.
49
50
51
52
53
54
55
56
57
58
59
60

Clusters of ranks

The graphs in Figure 2 show that the distribution of points is not uniform over the line, that is, there are more wealth data in between, say, 50 to 100 million euros than that there are in between 200 and 500 million euros. It may thus be that the 500 entries of the distribution can be summarized into a smaller set of ranks where for each new rank there is a cluster of families and individuals with approximately the same wealth.

Insert Figure 4 about here

To examine the presence of clusters, we take a closer look at the distribution of the data, after taking natural logarithms. In Figure 4 we present a typical graph of such a distribution. Clearly, the empirical distribution shows multi-modality. We exploit this feature by fitting a mixture of S normal distributions to the data. In brief, for each of the 500 data points we assign a probability p_1 that it is a draw from a normal distribution with mean μ_1 and variance σ^2 , a probability p_2 that it is a draw from such a distribution with mean μ_2 and variance σ^2 , and so on. We restrict the variance of these distributions to be equal in order to be able to fit a distribution to clusters with just a few observations. Based on the estimated probabilities for each observation, we use the 0.5 cut-off point to assign an observation to one of the S clusters. Some experimentation indicated that a maximum value of 6 for S should do. We use the Akaike and Bayesian information criteria (AIC and BIC) to make a choice for S .

Insert Tables 5 and 6 about here

In Table 5 we give the AIC values and in Table 6 the BIC values, where the smallest values are in italics. Interestingly, for both criteria we see that the preferred value of S is either 5 or 6, and never below 5. When AIC and BIC are in agreement, we take that particular value of S , and when the criteria disagree we follow BIC.

Insert Table 7 about here

1
2
3
4 In Table 7 we give the estimation results for each of the twelve years. A first
5 observation is that the estimate of the variance σ^2 is remarkably constant over the years.
6
7 Second, the standard errors for the μ_s parameters are quite small, so apparently the S
8
9 clusters are rather distinctive. Only in case a cluster contains a single observation (2005,
10
11 2008, and 2009) the standard error is large due to lack of data. Note that the estimates for
12
13 the means concern log-transformed data. When the cluster with the highest mean value
14
15 gets the new rank 1 and the next cluster rank 2 and so on, one could graphically show that
16
17 again there is a linear link between these means and the log of the rank. Hence, the power
18
19 law is robust to clustering.

20
21
22 Insert Table 8 about here
23

24
25 In Table 8 we give the ranks out of the 500 that are now clustered in the new
26
27 ranks 1 to 5 (or 6). Additionally, we give the range of the wealth in each of these clusters.
28
29 We learn from Table 8 that the cluster with families and individuals with the largest
30
31 wealth gets smaller in size over time. In 1998 and 1999 it contained 9 and 8 observations,
32
33 while in the last two years it consisted of just 1 observation. Furthermore, the cluster with
34
35 the smallest size of wealth is on average of size 300, meaning that about 300 of the 500
36
37 entries in the Quote 500 ranking approximately have similar wealth and are difficult to
38
39 distinguish from each other. The second wealthiest cluster is of size 10 to 20, and this
40
41 size is rather constant over time. In sum, the Quote 500 list can be sensibly summarized
42
43 in, what could be called, a Quote 6 list, which consists of six clusters with approximately
44
45 similarly wealthy families and individuals. An implication is that when individuals have
46
47 higher rankings over time, it really matters (in a statistical sense) if they enter a higher
48
49 cluster.

50
51 In sum, the Quote 500 rankings of wealthy families and individuals change over
52
53 time, although each year's distribution can neatly be approximated by a power law. When
54
55 the rankings are summarized into a ranking of six clusters, the power law is preserved. It
56
57 would now be interesting to see if the distribution of wealth is somehow correlated with
58
59 the real economy.
60

3. Correlating wealth with the economy

Now we have characterized the distribution of the Quote 500 data over the years, it is of interest to examine if the key features of these distributions have something in common with the real economy. As key variables that could be associated with wealth we use real GDP growth and the (annual) stock market returns on the Amsterdam Stock Exchange (AEX). The data for the Netherlands are given in Table 9.

Insert Table 9 about here

Insert Figure 5 about here

Some unreported analysis of the data indicates that stock market returns do not correlate with wealth, that is, after correction for effects of economic growth these returns do not add much information. In fact we find that one-year lagged returns have predictive value for economic growth. So, the rest of the analysis now purely focuses on economic growth.

First, when we regress economic growth on the mean and median of the changes in wealth (Table 2), and estimate the parameters using Two-Stage Least Squares (TSLS) to account for simultaneity (with one-year-lagged variables as instruments, we get slopes of 0.190 (0.072) and 0.394 (0.066), respectively, with standard errors in parentheses. In words, more economic growth is associated with higher increases in wealth, see also Figure 5.

Second, when we analyze the links between the α coefficients in Table 4 and economic growth, we find the growth negatively correlates (-25.6 with 12.11 as standard error) with the current value of the coefficient and that current α negatively correlates (-0.020 with standard error 0.008) with lagged growth. In words, more inequality in wealth is associated with higher economic growth, while past positive economic growth makes inequality to increase further.

This last finding is further supported when we regress the logs of the means, medians and standard deviations in Table 1 on lagged economic growth, where each of the estimated slopes is significant and positive. If we were to use these last three models

1
2
3 for forecasting the properties of the Quote 500 distribution in 2010, we would predict a
4 mean of 89.8, and median of 39.0 and a standard deviation of 264.9.
5
6
7

8 9 **4. Conclusions**

10
11
12 In this paper we have analyzed the distributional properties of the Quote 500 data on the
13 500 wealthiest families and individuals in the Netherlands. It turns out that the
14 distribution changes over time, and that these changes are correlated with economic
15 growth. Even though there are changes in the distribution, we find that the wealth data
16 can be adequately described by a power law. Such a power law is also found for the data
17 when they are clustered in six clusters with each approximately similarly wealthy
18 families and individuals.
19
20
21
22
23
24

25 A main finding in our paper is that lagged economic growth causes inequality
26 amongst the wealthiest to increase. In the literature on economic growth and inequality
27 this is not a common finding. In fact, usually the correlation is found the other way
28 around, that is, economic growth decreases inequality and also less inequality makes
29 economies to grow. A contrasting argument is presented in Barro (2000), where he
30 argues that the positive correlation could well exist if one were to look only at richer
31 countries. Hence, our finding supports his line of thought that when there is already a
32 base level of income or wealth, that then a further increase in economic output would
33 even increase inequality.
34
35
36
37
38
39
40
41
42
43
44
45
46
47
48
49
50
51
52
53
54
55
56
57
58
59
60

Table 1:

Summary statistics of the wealth of the 500 wealthiest in the Netherlands (in millions of euros)

Year	Mean	Median	Minimum	Maximum	Standard Deviation
1998	256.381	82.5	35	8500	764.576
1999	310.830	110	45	15000	1005.332
2000	362.500	140	60	15000	1075.399
2001	362.960	150	75	17000	1011.177
2002	165.316	68	32	8000	462.294
2003	180.524	73	35	10000	530.499
2004	194.850	80	41	12000	602.847
2005	219.860	86	43	12500	642.319
2006	241.550	91	46	15000	767.987
2007	273.558	100.5	48	18500	934.301
2008	289.030	110.0	50	24100	1133.854
2009	254.012	100	45	20500	968.731

Table 2:

Summary statistics of the annual percentage change in individual wealth

Year	Individuals	Mean	Median	Minimum	Maximum
1999	418	27.768	11	-75	614
2000	431	25.188	8	-69	447
2001	426	11.322	6	-77	450
2002	452	1.431	-2	-70	512
2003	454	9.753	6	-64	251
2004	449	7.310	4	-67	172
2005	459	11.020	4	-57	176
2006	466	7.129	5	-65	143
2007	475	10.263	6	-66	164
2008	473	10.460	5	-62	658
2009	476	-9.189	-12	-89	160

Table 3:

A regression of log(wealth in year T) on intercept and log(wealth in year T-1), with estimated standard errors in parentheses

Year	Number of cases	Parameters		R ²
		Intercept	Log(wealth in year T-1)	
1999	418	0.552 (0.085)	0.921 (0.017)	0.873
2000	431	0.505 (0.085)	0.932 (0.017)	0.881
2001	426	0.621 (0.086)	0.892 (0.016)	0.877
2002	452	-0.650 (0.079)	0.968 (0.015)	0.906
2003	454	0.202 (0.055)	0.970 (0.012)	0.936
2004	449	0.145 (0.042)	0.981 (0.009)	0.965
2005	459	0.137 (0.049)	0.989 (0.010)	0.953
2006	466	0.048 (0.043)	1.001 (0.009)	0.965
2007	475	0.074 (0.046)	1.002 (0.009)	0.960
2008	473	0.278 (0.061)	0.955 (0.012)	0.930
2009	476	0.096 (0.063)	0.957 (0.012)	0.926

Table 4:

Parameter estimates (and standard errors) for power laws. Based on the regression

$$\log(\textit{Wealth}) = \mu + \alpha \log(\textit{Rank}) + \varepsilon$$

Year	$\hat{\mu}$	$\hat{\alpha}$	R ²
1998	10.092 (0.022)	-1.038 (0.004)	0.991
1999	10.080 (0.020)	-0.988 (0.004)	0.993
2000	10.112 (0.016)	-0.952 (0.003)	0.995
2001	9.916 (0.013)	-0.894 (0.002)	0.996
2002	9.150 (0.013)	-0.898 (0.002)	0.997
2003	9.224 (0.015)	-0.894 (0.003)	0.995
2004	9.237 (0.018)	-0.879 (0.003)	0.993
2005	9.453 (0.018)	-0.899 (0.003)	0.993
2006	9.559 (0.016)	-0.980 (0.003)	0.995
2007	9.743 (0.017)	-0.926 (0.003)	0.994
2008	9.737 (0.027)	-0.908 (0.007)	0.984
2009	9.575 (0.027)	-0.899 (0.005)	0.984

Table 5:
AIC for mixtures of normal distributions for log(wealth) data

Mixtures	2	3	4	5	6
Year					
1998	2.634	2.557	2.508	2.502	2.455
1999	2.563	2.483	2.404	2.384	2.368
2000	2.453	2.372	2.339	2.280	2.270
2001	2.317	2.222	2.184	2.151	2.153
2002	2.311	2.186	2.141	2.110	2.105
2003	2.306	2.159	2.103	2.093	2.073
2004	2.280	2.094	2.036	2.102	1.992
2005	2.319	2.178	2.116	2.071	2.065
2006	2.346	2.191	2.144	2.080	2.076
2007	2.406	2.277	2.211	2.153	2.140
2008	2.438	2.335	2.275	2.192	2.185
2009	2.419	2.329	2.256	2.227	2.206

Table 6:
BIC for mixtures of normal distributions for log(wealth) data

Mixtures	2	3	4	5	6
Year					
1998	2.668	2.608	2.576	2.587	2.556
1999	2.597	2.534	2.471	2.468	2.469
2000	2.487	2.422	2.406	2.365	2.371
2001	2.351	2.272	2.252	2.235	2.254
2002	2.344	2.237	2.208	2.194	2.206
2003	2.339	2.210	2.179	2.177	2.174
2004	2.314	2.145	2.103	2.096	2.092
2005	2.352	2.228	2.193	2.155	2.166
2006	2.380	2.242	2.212	2.164	2.177
2007	2.440	2.328	2.278	2.237	2.241
2008	2.472	2.385	2.343	2.277	2.286
2009	2.453	2.380	2.323	2.311	2.307

Table 7:
Parameter estimates (and standard errors) for the clusters

Year	$\hat{\sigma}$	$\hat{\mu}_1$	$\hat{\mu}_2$	$\hat{\mu}_3$	$\hat{\mu}_4$	$\hat{\mu}_5$	$\hat{\mu}_6$
1998	0.270 (0.016)	3.854 (0.031)	4.597 (0.040)	5.418 (0.050)	6.420 (0.061)	7.375 (0.166)	8.530 (0.079)
1999	0.333 (0.020)	4.277 (0.029)	5.254 (0.046)	6.318 (0.095)	7.238 (0.160)	8.762 (0.090)	
2000	0.312 (0.018)	4.518 (0.030)	5.395 (0.047)	6.356 (0.067)	7.669 (0.062)	9.212 (0.161)	
2001	0.309 (0.021)	4.710 (0.029)	5.511 (0.063)	6.397 (0.073)	7.624 (0.060)	9.196 (0.133)	
2002	0.300 (0.018)	3.935 (0.026)	4.728 (0.067)	5.584 (0.064)	6.815 (0.062)	8.410 (0.118)	
2003	0.256 (0.018)	3.971 (0.028)	4.559 (0.061)	5.356 (0.052)	6.158 (0.092)	7.039 (0.059)	8.725 (0.096)
2004	0.235 (0.016)	4.059 (0.027)	4.602 (0.051)	5.391 (0.044)	6.088 (0.070)	7.080 (0.054)	8.767 (0.062)
2005	0.304 (0.016)	4.255 (0.020)	5.301 (0.046)	6.229 (0.092)	7.289 (0.090)	9.431 (>100)	
2006	0.300 (0.016)	4.308 (0.020)	5.349 (0.051)	6.203 (0.089)	7.306 (0.072)	9.062 (0.115)	
2007	0.306 (0.015)	4.367 (0.021)	5.405 (0.048)	6.373 (0.065)	7.541 (0.092)	9.256 (0.118)	
2008	0.287 (0.013)	4.406 (0.021)	5.410 (0.039)	6.324 (0.060)	7.413 (0.058)	10.091 (>100)	
2009	0.266 (0.016)	4.263 (0.021)	5.074 (0.052)	5.816 (0.057)	6.687 (0.094)	7.493 (0.075)	9.927 (>100)

Table 8:
Ranks of the data based on clusters, part I

Rank based on clusters	Rank in 1-500	Wealth (x Million Euros)
1998 (S = 6)		
1	1-9	8500-3000
2	10-17	1900-1200
3	18-55	1000-400
4	56-128	360-160
5	129-298	150-70
6	299-500	67.5-35
1999 (S = 5)		
1	1-8	15000-3400
2	9-20	2200-1100
3	21-69	1000-370
4	70-220	360-130
5	221-500	125-45
2000 (S = 5)		
1	1-4	15000-6500
2	5-25	4000-1200
3	26-75	1000-400
4	76-222	385-155
5	223-500	150-60
2001 (S = 5)		
1	1-3	17000-6000
2	4-26	4100-1200
3	27-76	1000-425
4	77-200	400-185
5	201-500	180-75

Table 8, continued:
Ranks of the data based on clusters, part II

Rank based on clusters	Rank in 1-500	Wealth (x Million Euros)
2002 (S = 5)		
1	1-3	8000-2600
2	4-25	1700-600
3	26-81	500-190
4	82-185	185-86
5	186-500	85-32
2003 (S = 6)		
1	1-2	10000-3800
2	3-21	2300-780
3	22-43	726-355
4	44-118	348-148
5	119-228	146-79
6	229-500	78-36
2004 (S = 6)		
1	1-2	12000-3400
2	3-22	2000-800
3	23-47	675-350
4	48-128	332-152
5	129-237	150-83
6	238-500	82-41
2005 (S= 5)		
1	1	12500
2	2-21	3500-945
3	22-55	850-365
4	56-163	350-135
5	164-500	130-43

Table 8, continued:
Ranks of the data based on clusters, part III

Rank based on clusters	Rank in 1-500	Wealth (x Million Euros)
2006 (S = 5)		
1	1-2	15000-4900
2	3-22	2700-972
3	23-58	866-367
4	59-167	359-139
5	168-500	136-46
2007 (S = 5)		
1	1-2	18500-5600
2	3-16	3900-1200
3	17-62	1100-400
4	63-180	390-145
5	181-500	142-48
2008 (S = 5)		
1	1	24100
2	2-23	4100-1000
3	24-74	950-384
4	75-201	377-150
5	202-500	147-50
2009 (S = 6)		
1	1	20500
2	2-13	3600-1300
3	14-37	1200-600
4	38-109	550-246
5	110-223	235-115
6	224-500	113-45

Table 9:
Annual economic growth and stock market returns for the Netherlands

	Real GDP growth	Stock market return
1997	4.3	40.79
1998	3.9	29.99
1999	4.7	24.71
2000	3.9	-5.04
2001	1.9	-20.52
2002	0.1	-36.32
2003	0.3	4.62
2004	2.2	3.09
2005	2.0	25.48
2006	3.4	13.41
2007	3.6	4.12
2008	2.0	-52.32
2009	-4.0	36.35

1
2
3
4
5
6
7
8
9
10
11
12
13
14
15
16
17
18
19
20
21
22
23
24
25
26
27
28
29
30
31
32
33
34
35
36
37
38
39
40
41
42
43
44
45
46
47
48
49
50
51
52
53
54
55
56
57
58
59
60

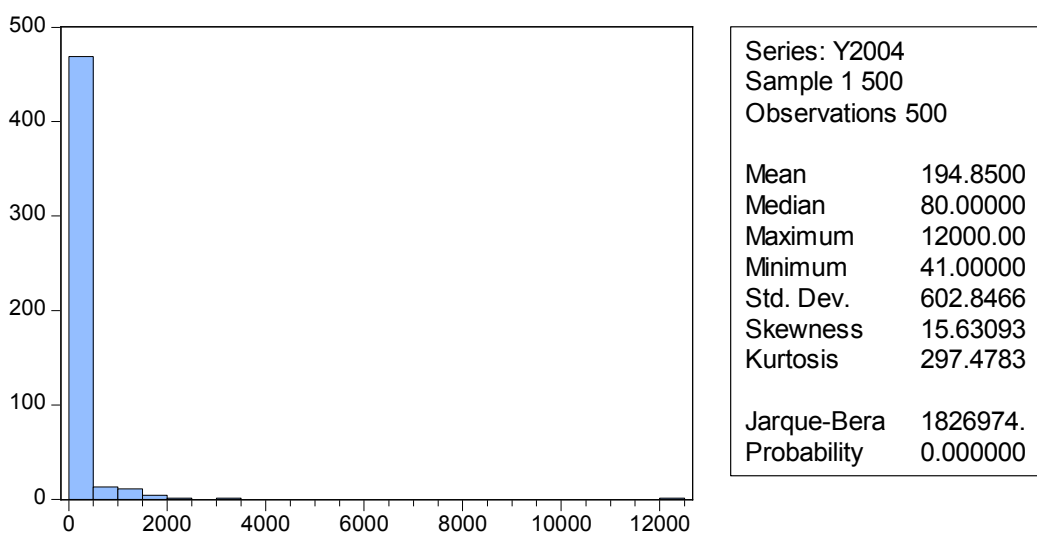


Figure 1: A typical graph of the data

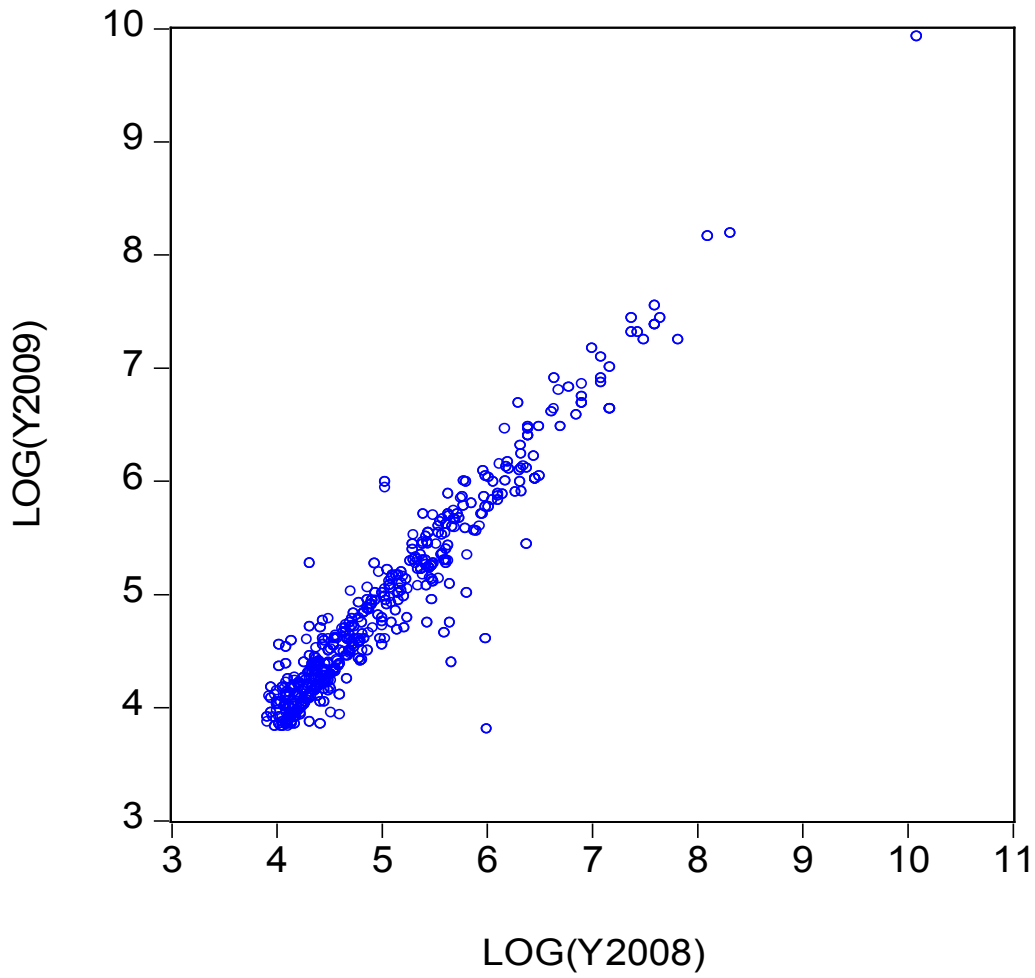


Figure 2: Annual changes, visualized

1
2
3
4
5
6
7
8
9
10
11
12
13
14
15
16
17
18
19
20
21
22
23
24
25
26
27
28
29
30
31
32
33
34
35
36
37
38
39
40
41
42
43
44
45
46
47
48
49
50
51
52
53
54
55
56
57
58
59
60

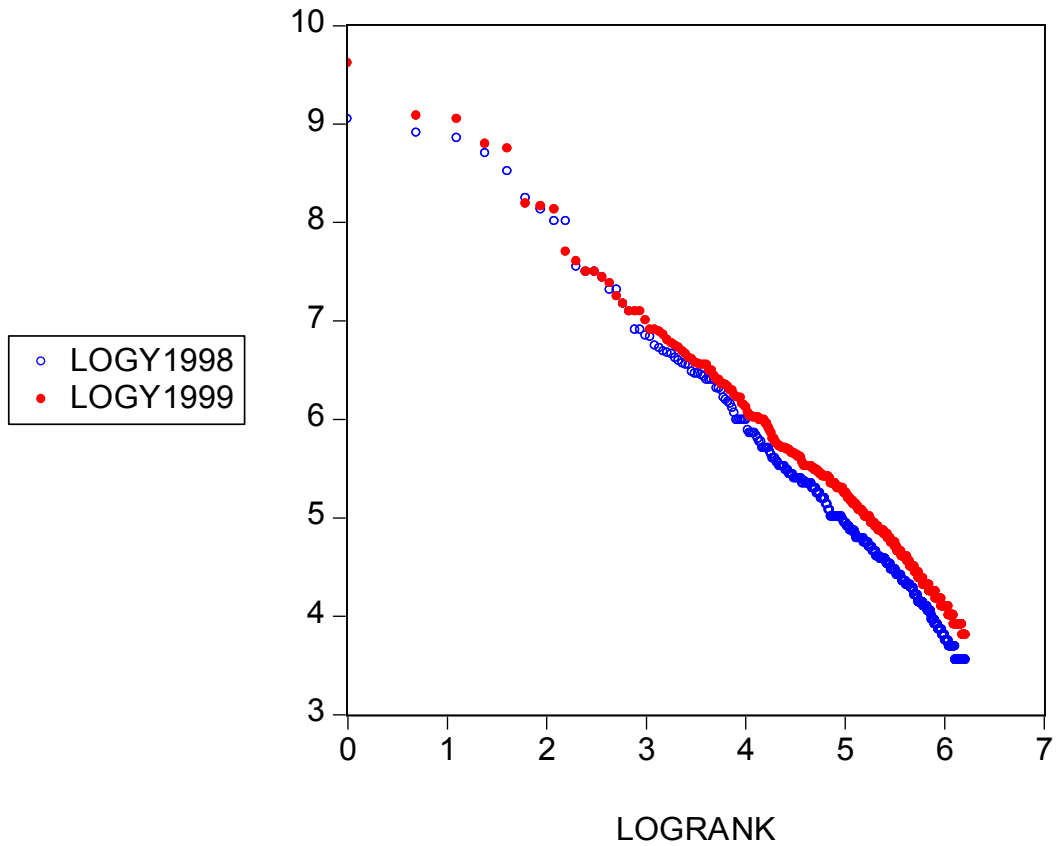


Figure 3a: The power law visualized, 1998-1999

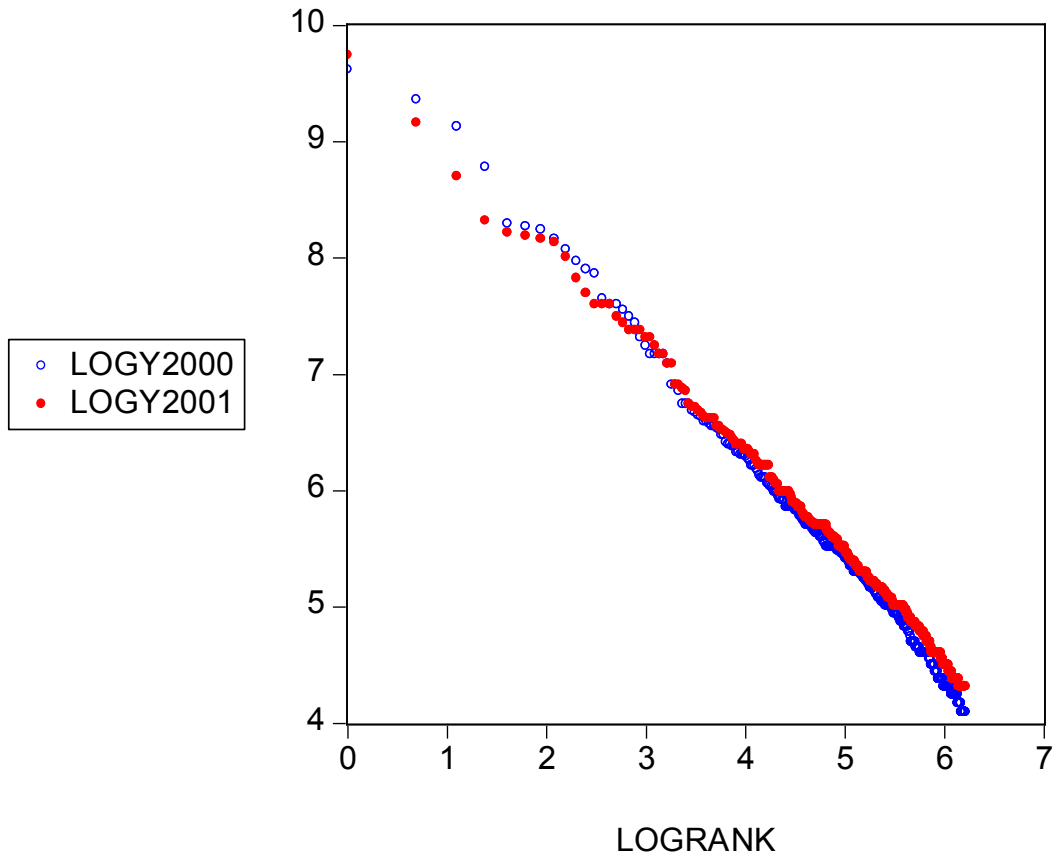


Figure 3b: The power law visualized, 2000-2001

1
2
3
4
5
6
7
8
9
10
11
12
13
14
15
16
17
18
19
20
21
22
23
24
25
26
27
28
29
30
31
32
33
34
35
36
37
38
39
40
41
42
43
44
45
46
47
48
49
50
51
52
53
54
55
56
57
58
59
60

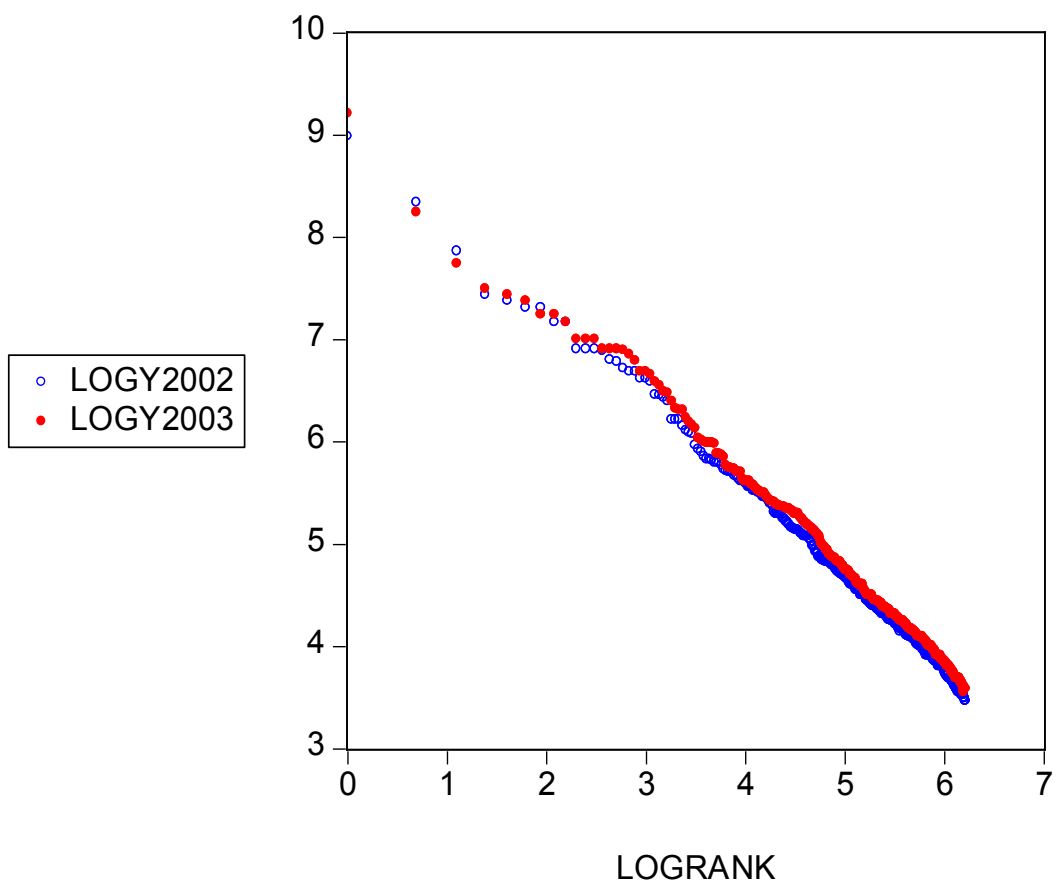


Figure 3c: The power law visualized, 2002-2003

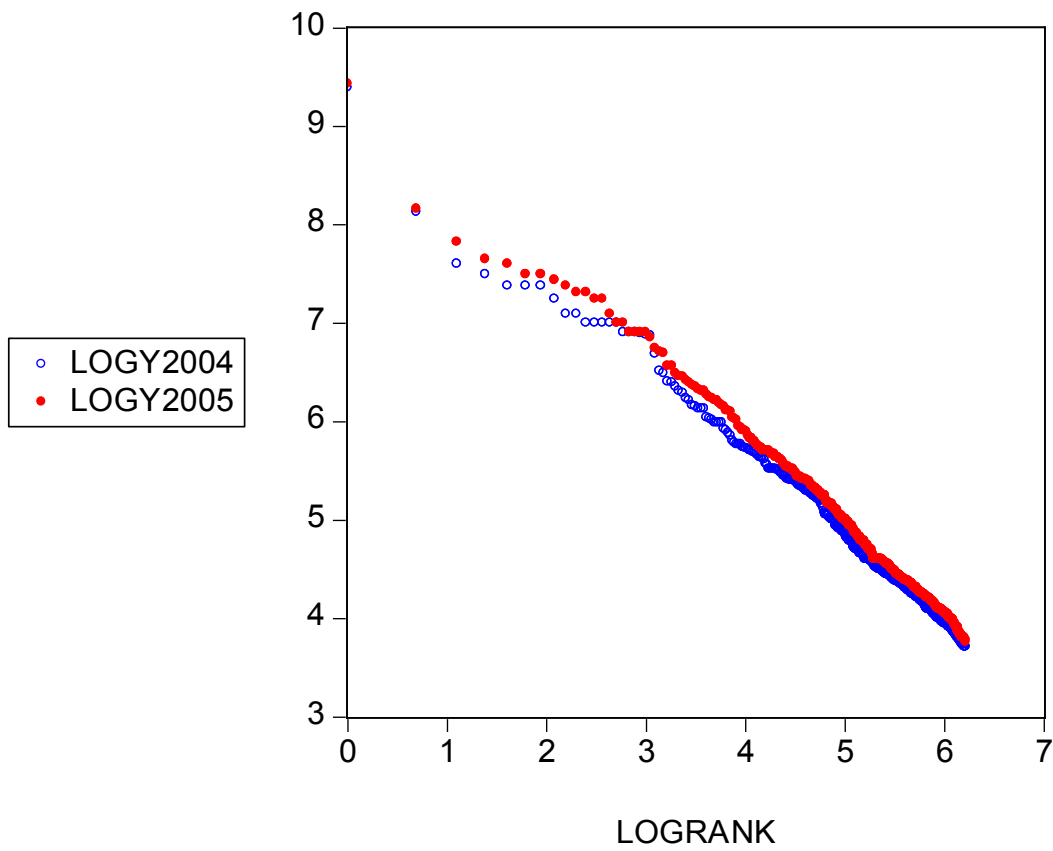


Figure 3d: The power law visualized, 2004-2005

1
2
3
4
5
6
7
8
9
10
11
12
13
14
15
16
17
18
19
20
21
22
23
24
25
26
27
28
29
30
31
32
33
34
35
36
37
38
39
40
41
42
43
44
45
46
47
48
49
50
51
52
53
54
55
56
57
58
59
60

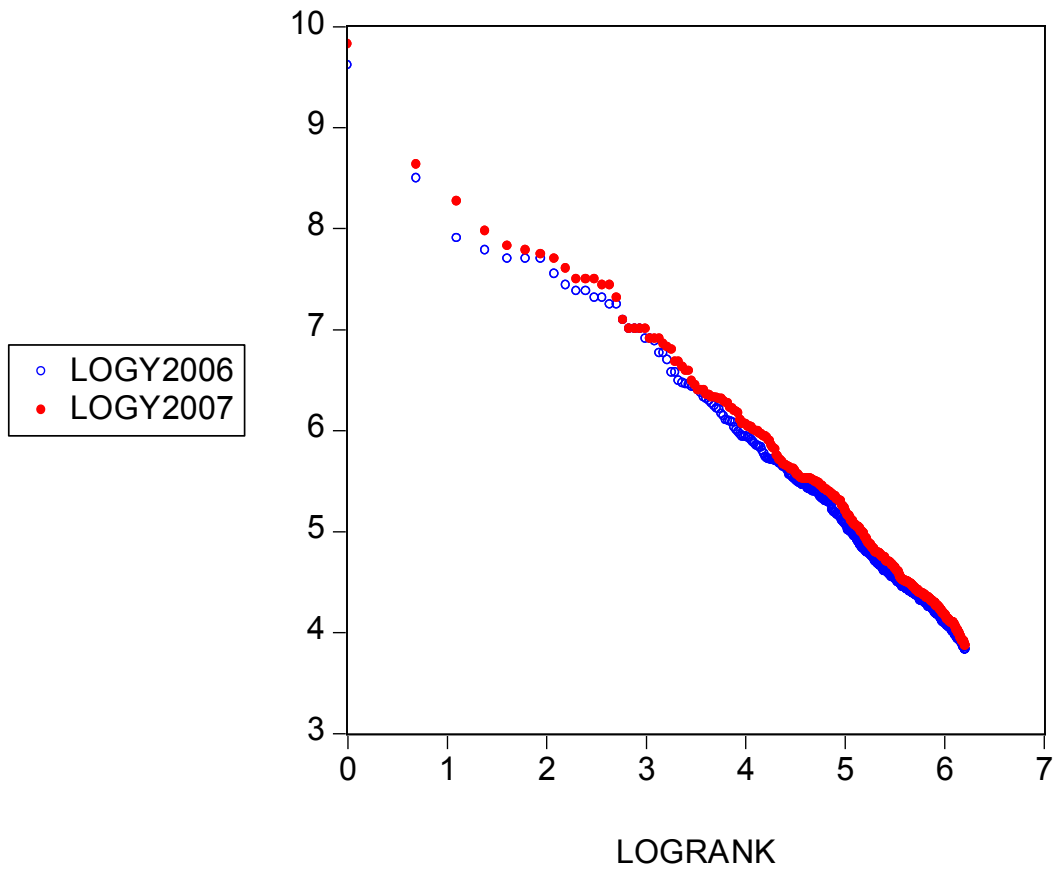


Figure 3e: The power law visualized, 2006-2007

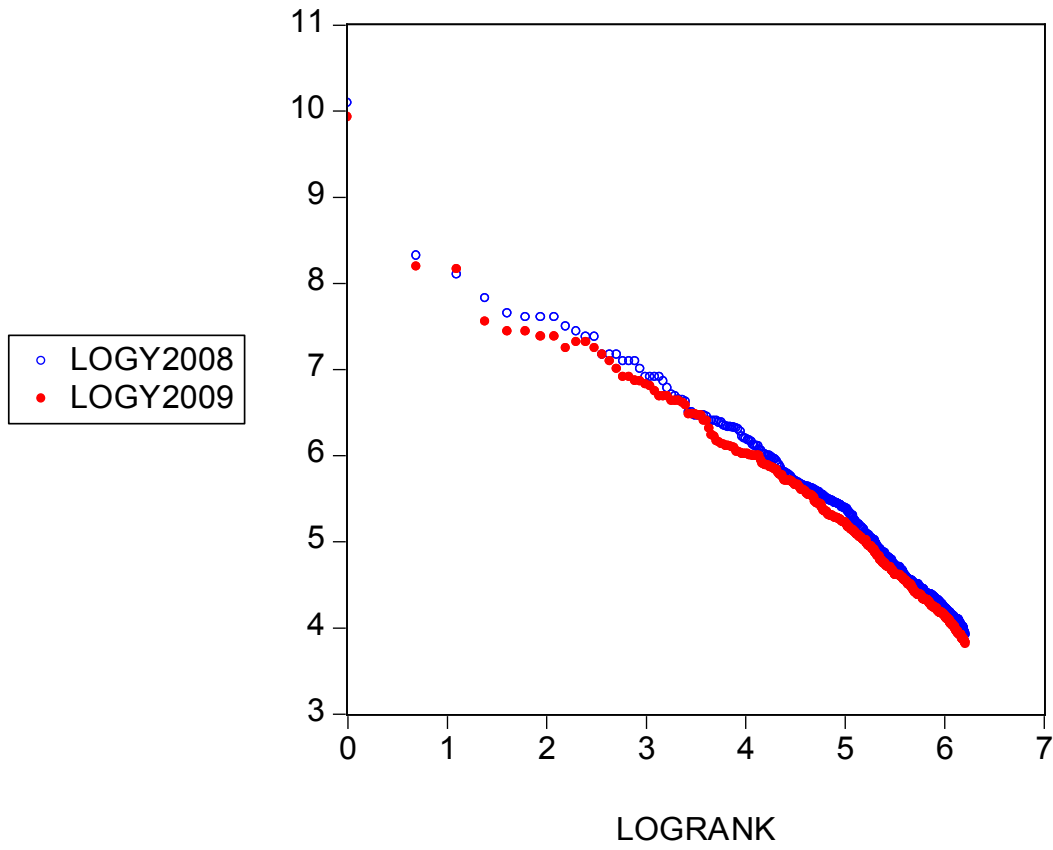


Figure 3f: The power law visualized, 2008-2009

1
2
3
4
5
6
7
8
9
10
11
12
13
14
15
16
17
18
19
20
21
22
23
24
25
26
27
28
29
30
31
32
33
34
35
36
37
38
39
40
41
42
43
44
45
46
47
48
49
50
51
52
53
54
55
56
57
58
59
60

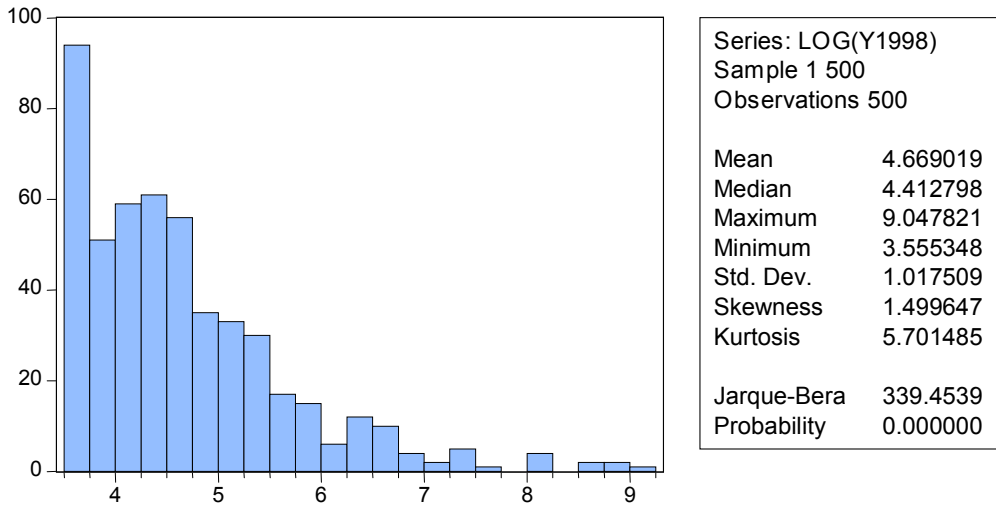


Figure 4: the Logs of wealth, a typical graph

Peer Review

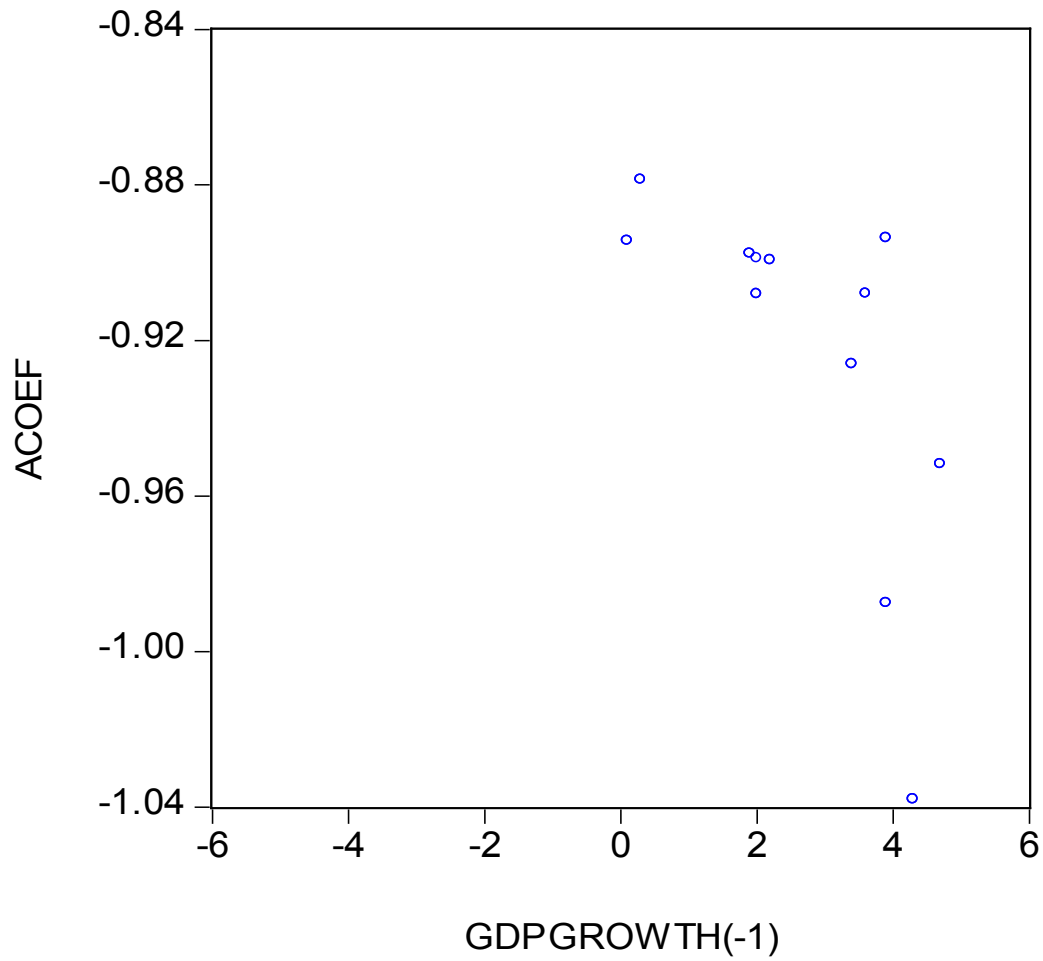


Figure 5: Inequality versus one-year lagged growth

References

Barro, R.J. (2000), Inequality and growth in a panel of countries, *Journal of Economic Growth*, 5, 5-32.

Castaldi, C. and M. Milakovic (2007), Turnover Activity in Wealth Portfolios, *Journal of Economic Behavior & Organization*, 63, 537-552

Davies, J.B. and A.F. Shorrocks (2000), The Distribution of Wealth, in A.B. Atkinson and F. Bourguignon (eds.), *Handbook of Income Distribution*, Amsterdam: Elsevier, 605-675.

Levy, M. and S. Solomon (1997), New Evidence for the Power Law Distribution of Wealth, *Physica A*, 242, 90-94.

Neumayer, E. (2004), The Super-Rich in Global Perspective: A Quantitative Analysis of the Forbes List of Billionaires, *Applied Economics Letters*, 11, 793-796.

Newman, M.E.J. (2005), Power Laws, Pareto Distributions and Zipf's Law, *Contemporary Physics*, 46, 323-351.

Persky, J.J. (1992), Pareto's Law, *Journal of Economic Perspectives*, 6, 181-192.