



**HAL**  
open science

# Critical Gaussian Multiplicative Chaos: Convergence of the Derivative Martingale

Bertrand Duplantier, Rémi Rhodes, Scott Sheffield, Vincent Vargas

► **To cite this version:**

Bertrand Duplantier, Rémi Rhodes, Scott Sheffield, Vincent Vargas. Critical Gaussian Multiplicative Chaos: Convergence of the Derivative Martingale. 2012. hal-00705619v1

**HAL Id: hal-00705619**

**<https://hal.science/hal-00705619v1>**

Preprint submitted on 8 Jun 2012 (v1), last revised 1 Jul 2012 (v2)

**HAL** is a multi-disciplinary open access archive for the deposit and dissemination of scientific research documents, whether they are published or not. The documents may come from teaching and research institutions in France or abroad, or from public or private research centers.

L'archive ouverte pluridisciplinaire **HAL**, est destinée au dépôt et à la diffusion de documents scientifiques de niveau recherche, publiés ou non, émanant des établissements d'enseignement et de recherche français ou étrangers, des laboratoires publics ou privés.

# Critical Gaussian Multiplicative Chaos: Convergence of the Derivative Martingale

BERTRAND DUPLANTIER\*, RÉMI RHODES†, SCOTT SHEFFIELD‡  
and VINCENT VARGAS§

*\*Institut de Physique Théorique, CEA/Saclay  
F-91191 Gif-sur-Yvette Cedex, France*

*† §Université Paris-Dauphine, Ceremade, UMR 7564  
Place de Maréchal de Lattre de Tassigny  
75775 Paris Cedex 16, France*

*‡Department of Mathematics  
Massachusetts Institute for Technology  
Cambridge, Massachusetts 02139, USA*

June 8, 2012

## Abstract

In this paper, we study Gaussian multiplicative chaos in the critical case. We show that the so-called derivative martingale, introduced in the context of branching Brownian motions and branching random walks, converges almost surely (in all dimensions) to a random measure with full support. We also show that the limiting measure has no atom. In connection with the derivative martingale, we write explicit conjectures about the glassy phase of log-correlated Gaussian potentials and the relation with the asymptotic expansion of the maximum of log-correlated Gaussian random variables.

## 1. Introduction

### 1.1 Overview

In the eighties, Kahane [45] developed a continuous parameter theory of multifractal random measures, called Gaussian multiplicative chaos. His efforts were followed by several authors [3, 7, 11, 36, 66, 67, 68] coming up with various generalizations at different scales. This family of random fields has found many applications in various fields of science, especially in turbulence and in mathematical finance. Recently, the authors in [30] constructed a probabilistic and geometrical framework for Liouville quantum gravity and the so-called

---

\*e-mail: [bertrand.duplantier@cea.fr](mailto:bertrand.duplantier@cea.fr). Partially supported by grant ANR-08-BLAN-0311-CSD5.

†e-mail: [rhodes@ceremade.dauphine.fr](mailto:rhodes@ceremade.dauphine.fr). Partially supported by grant ANR-11-JCJC CHAMU.

‡e-mail: [sheffield@math.mit.edu](mailto:sheffield@math.mit.edu). Partially supported by NSF grants DMS 064558 and OISE 0730136.

§e-mail: [vargas@ceremade.dauphine.fr](mailto:vargas@ceremade.dauphine.fr). Partially supported by grant ANR-11-JCJC CHAMU.

Knizhnik-Polyakov-Zamolodchikov (KPZ) equation [51], based on the two-dimensional Gaussian free field (GFF) (see [23, 24, 26, 30, 38, 51, 61] and references therein). In this context, the KPZ formula has been proved rigorously [30], as well as in the closely related case of Gaussian multiplicative chaos [68] (see also [12] in the context of Mandelbrot's multiplicative cascades). This was done in the standard case of Liouville quantum gravity, namely strictly below the critical value of the GFF coupling constant  $\gamma$  in the Liouville conformal factor, i.e. for  $\gamma < 2$  (in a chosen normalization). Beyond this threshold, the standard construction yields vanishing random measures [29, 45]. The issue of mathematically constructing singular Liouville measures beyond the phase transition (i.e. for  $\gamma > 2$ ) and deriving the corresponding (non-standard dual) KPZ formula has been investigated in [10, 28, 29], giving the first mathematical understanding of the so-called *duality* in Liouville quantum gravity (see [4, 5, 21, 27, 32, 44, 48, 49, 50, 55] for an account of physical motivations). However, the rigorous construction of random measures *at criticality*, that is for  $\gamma = 2$ , does not seem to ever have been carried out.

As stated above, once the Gaussian randomness is fixed, the standard Gaussian multiplicative chaos describes a random positive measure for each  $\gamma < 2$  but yields 0 when  $\gamma = 2$ . Naively, one might therefore guess that  $-1$  times the *derivative* at  $\gamma = 2$  would be a random positive measure. This intuition leads one to consider the so-called *derivative martingale*, formally obtained by differentiating the standard measure w.r.t.  $\gamma$  at  $\gamma = 2$ , as explained below. In the case of branching Brownian motions [62], or of branching random walks [14, 57] (see also [1] for a recent different but equivalent construction), the construction of such an object has already been carried out mathematically. In the context of branching random walks, the derivative martingale was introduced in the study of the fixed points of the smoothing transform at criticality (the smoothing transform is a generalization of Mandelbrot's  $\star$ -equation for discrete multiplicative cascades; see also [15]). Our construction will therefore appear as a continuous analogue of those works in the context of Gaussian multiplicative chaos.

Besides the 2D-Liouville Quantum Gravity framework (and the KPZ formula), many other important models or questions involve Gaussian multiplicative chaos of log-correlated Gaussian fields in all dimensions. Let us mention the glassy phase of log-correlated random potentials (see [6, 16, 19, 37]) or the asymptotic expansion of the maximum of log-correlated random variables (see [17, 25]). In all these problems, one of the key tools is the derivative martingale at the critical point  $\gamma^2 = 2d$  (where  $d$  is the dimension), whose construction is precisely the purpose of this paper.

In dimension  $d$ , a standard Gaussian multiplicative chaos is a random measure that can be written formally, for any Borelian set  $A \subset \mathbb{R}^d$ , as

$$M_\gamma(A) = \int_A e^{\gamma X(x) - \frac{\gamma^2}{2} \mathbb{E}[X^2(x)]} dx \quad (1)$$

where  $X$  is a centered log-correlated Gaussian field:

$$\mathbb{E}[X(x)X(y)] = \ln_+ \frac{1}{|x - y|} + g(x, y),$$

with  $\ln_+(x) = \max(\ln x, 0)$  and  $g$  a continuous bounded function over  $\mathbb{R}^d \times \mathbb{R}^d$ . Although such an  $X$  cannot be defined as a random function (and may be a random *distribution*, like the GFF) the measures can be rigorously defined all for  $\gamma^2 < 2d$  using a straightforward

limiting procedure involving an time-indexed family of improving approximations to  $X$  [45], as we will review in Section 2. By contrast, it is well known that for  $\gamma^2 \geq 2d$  the measures constructed by this procedure are identically zero [45]. Other techniques are thus required to create similar measures beyond the critical value  $\gamma^2 = 2d$  [10, 28, 29].

Roughly speaking, the derivative martingale is defined as (recall that  $\gamma = \sqrt{2d}$  is the critical value)

$$M'(A) := -\frac{\partial}{\partial \gamma} [M_\gamma(A)]_{\gamma=\sqrt{2d}} = \left[ \int_A (\gamma \mathbb{E}[X^2(x)] - X(x)) e^{\gamma X(x) - \frac{\gamma^2}{2} \mathbb{E}[X^2(x)]} dx \right]_{\gamma=\sqrt{2d}}. \quad (2)$$

Here we have differentiated the measure  $M_\gamma$  in (1) with respect to the parameter  $\gamma$  to obtain the above expression (2). Note that this is the same as (1) except for the factor  $(\gamma \mathbb{E}[X^2(x)] - X(x))$ . To give the reader some intuition, we remark that we will ultimately see that the main contributions to  $M'(A)$  come from locations  $x$  where this factor is positive but relatively close to zero (on the order of  $\sqrt{\mathbb{E}[X^2(x)]}$ ) which correspond to locations  $x$  where  $X(x)$  is nearly maximal. Indeed, in what follows, the reader may occasionally wish to forget the derivative interpretation of (2) and simply view  $(\gamma \mathbb{E}[X^2(x)] - X(x))$  as the factor by which one rescales (1) in order to ensure that one obtains a non-trivial measure (instead of zero) when using the standard limiting procedure.

In a sense, the measures  $M_\gamma$  (1) become more concentrated as  $\gamma^2$  approaches  $2d$ . (They assign full measure to a set of Hausdorff dimension  $d - \gamma^2/2$ , which tends to zero as  $\gamma^2 \rightarrow 2d$ .) It is therefore natural to wonder how concentrated the  $\gamma^2 = 2d$  measure will be. In particular, it is natural to wonder whether it possesses *atoms* (in which case it could in principle assign full measure to a countable set). This question is still open, even in the similar case of discrete models like Mandelbrot's multiplicative cascades or other measures based on branching random walks [14]. In our context, we will answer *in the negative*. Moreover, since our proof is based on a continuous version of the spine decomposition, as developed in the context of branching random walks, we expect that it can be adapted to these other models as well.

Roughly speaking, the reason that establishing non-atomicity in critical models is non-trivial is that proofs of non-atomicity for (non-critical) multiplicative chaos usually rely on the existence of moments higher than 1 (see [20]) and the scaling relations of multifractal random measures (see, e.g., [3]). At criticality, the random measures involved (cascades, branching random walks, or Gaussian multiplicative chaos) no longer possess finite moments of order 1, and the scaling relations become useless.

To explain this issue in more detail, we recall that it is proved in [20] that a stationary random measure  $M$  over  $\mathbb{R}^d$  is almost surely non-atomic if ( $C$  stands here for the unit cube of  $\mathbb{R}^d$ )

$$\forall \delta > 0, \quad n^d \mathbb{P}(M(n^{-1}C) > \delta) \rightarrow 0 \quad \text{as } n \rightarrow \infty. \quad (3)$$

When  $M = M_\gamma$  for  $0 < \gamma^2 < 2d$ , a computable property of  $M_\gamma$  is its power-law spectrum  $\xi$  characterized by:

$$\mathbb{E} \left[ (M_\gamma(n^{-1}C))^q \right] \simeq D_q n^{-\xi(q)} \quad \text{as } n \rightarrow \infty, \quad (4)$$

for all those  $q$  making the above expectation finite, i.e.  $q \in [0, \frac{2d}{\gamma^2}[$ . It matches

$$\xi(q) = \left(d + \frac{\gamma^2}{2}\right)q - \frac{\gamma^2}{2}q^2. \quad (5)$$

By using the Markov inequality in (3), (4) obviously yields for  $q \in [0, \frac{2d}{\gamma^2}[$

$$n^d \mathbb{P}(M_\gamma(n^{-1}C) > \delta) \lesssim \frac{D_q}{\delta^q} n^{d-\xi(q)}.$$

Therefore, the non-atomicity of the measure boils down to finding a  $q$  such that the power-law spectrum is strictly larger than  $d$ :

- In the subcritical situation  $\gamma^2 < 2d$ , the function  $\xi$  increases on  $[0, 1]$  from 0 to  $d$ . Such a  $q$  is necessarily larger than 1 and a straightforward computation shows that any  $q \in ]1, \frac{2d}{\gamma^2}[$  suffices.
- For  $\gamma^2 = 2d$ , the above relations (4) and (5) should remain valid only for  $q < 1$ . Therefore the subcritical strategy fails because the power-law spectrum achieves its maximum  $d$  at  $q = 1$ . It is tempting to try to replace the gauge function  $x \mapsto x^q$  by something that could be more appropriate at criticality like  $x \mapsto x \ln(1+x)^q$ , etc. However, the fact that the measure does not possess a moment of order 1 (see Proposition 5 below) shows that there is no way of changing the gauge so as to make  $\xi$  go beyond  $d$ .

More sophisticated machinery is thus necessary to investigate non-atomicity at criticality. Indeed, we expect the derivative martingale to assign full measure to a (random) Hausdorff set of dimension 0, indicating that the measure is in some sense just “barely” non-atomic.

Let us finally mention the interesting work of [73] where the author constructs on the unit circle ( $d = 1$ ) a classical Gaussian multiplicative Chaos given by the exponential of a field  $X$  such that for each  $\varepsilon$  the covariance of  $X$  at points  $x$  and  $y$  lies strictly between  $(2 - \varepsilon) \ln_+ \frac{1}{|x-y|}$  and  $2 \ln_+ \frac{1}{|x-y|}$  when  $|x - y|$  is sufficiently small. In some sense, his construction is a *near* critical construction, different from the measures constructed here. This is illustrated by the fact that the measures in [73] possess moments of order 1 (and even belong to  $L \log L$ ), which is atypical for the critical multiplicative chaos associated to log-correlated random variables.

In this paper, we tackle the problem of constructing random measures at criticality for a large class of log-correlated Gaussian fields in any dimension, the covariance kernels of which are called  $\star$ -scale invariant kernels. This approach allows us to link the measures under consideration to a functional equation, the  $\star$ -equation, giving rise to several conjectures about the glassy phase of log-correlated Gaussian potentials and about the three-terms expansion of the maximum of log-correlated Gaussian variables.

Another important family of random measures is the class defined by taking  $X$  to be the Gaussian Free Field (GFF) with free or Dirichlet boundary conditions on a planar domain, as in [30] (see also [70] for an introduction to the GFF). The measures defined in this way are also known as the (critical) Liouville quantum gravity measures, and are closely related to conformal field theory, as well as various 2-dimensional discrete random surface models and their scaling limits. Although the Gaussian free field is in some sense a log-correlated random field, it does not fall exactly into the framework of this paper, which deals with translation invariant random measures (defined on all of  $\mathbb{R}^2$  or  $\mathbb{R}^d$ ) that can be approximated in a particular way (via the  $\star$ -equation). Although some of the arguments of this paper can be easily extended to settings where the strict translation invariance requirement for  $X$  is relaxed (e.g.,  $X$  is the Gaussian free field on a disk), we

will still need additional arguments to show that the derivative martingale associates a unique non-atomic random positive measure to a given instance of the GFF almost surely, that this measure is independent of the particular approximation scheme used, and that this measure transforms under conformal maps in the same way as the  $\gamma < 2$  measures constructed in [30]. For the sake of pedagogy, this other part of our work will appear in a companion paper. For the time being, we just announce that all the results of this paper are valid for the GFF construction.

## 1.2 Physics literature: history and motivation

It is interesting to pause for a moment and consider the physics literature on Liouville quantum gravity. We first remark that the non-critical case, with  $d = 2$  and  $\gamma < 2$ , was treated in [30], which contains an extensive overview of the physics literature and an explanation of the relationships (some proved, some conjectural) between random measures and discrete and continuum random surfaces. Roughly speaking, when one takes a random two-dimensional manifold and conformally maps it to a disk, the image of the area measure is a random measure on the disk that should correspond to an exponential of a log-correlated Gaussian random variable (some form of the GFF). From this point of view, many of the physics results about discrete and continuum random surfaces can be interpreted as predictions about the behavior of these random measures, where the value of  $\gamma < 2$  depends on the particular physical model in question.

There is also a physics literature focusing on the critical case  $\gamma = 2$ , which we expect to be related to the measure constructed in this paper. This section contains a brief overview of the results from this literature, as appearing in e.g. [18, 38, 39, 40, 41, 42, 47, 49, 53, 54, 56, 63, 64, 72]. Most of the results surveyed in this section have not yet been established or understood in a mathematical sense.

The critical case  $\gamma = 2$  corresponds to the value  $c = 1$  of the so-called *central charge*  $c$  of the conformal field theory coupled to gravity, via the famous KPZ result [51]:

$$\gamma = \frac{1}{\sqrt{6}}(\sqrt{25 - c} - \sqrt{1 - c}).$$

Discrete statistical physical models then include one-dimensional matrix models (also called “matrix quantum mechanics” (MQM)) [18, 38, 39, 40, 42, 47, 49, 63, 64, 72], the critical  $O(n = 2)$  model on a random planar lattice [53, 54, 56], and the critical  $Q = 4$  Potts model on a random lattice [13, 22, 34]. In the continuum, a natural coupling also exists between Liouville quantum gravity and the Schramm-Loewner evolution  $\text{SLE}_\kappa$  for  $\gamma = \sqrt{\kappa}$ , rigorously established for  $\kappa < 4$  [31, 71]. Thus, the critical value  $\gamma = 2$  corresponds to the special SLE parameter value  $\kappa = 4$ , above which the  $\text{SLE}_\kappa$  curve no longer is a simple curve, but develops double points at all scales.

The standard  $c = 1, \gamma = 2$  Liouville field theory [18, 38, 39, 40, 47, 49, 63, 64] involves violations of scaling by *logarithmic factors*. For example, the partition function of genus 0 random surfaces of area  $\mathcal{A}$  grows as [40, 47]

$$\mathcal{Z} \propto \exp(\mu\mathcal{A}) \mathcal{A}^{-3}(\log \mathcal{A})^{-2},$$

where  $\mu$  is a non-universal growth constant depending on the (planar lattice) regularization. The area exponent (-3) is universal for a  $c = 1$  central charge, while the subleading

logarithmic factor is attributed to the unusual dependence on the Liouville field  $\varphi$  (equivalent to  $X$  here) of the so-called “tachyon field”  $T(\varphi) \propto \varphi e^{2\varphi}$  [47, 49, 64]. Its integral over a “background” Borelian set  $A$  generates the quantum area  $\mathcal{A} = \int_A T(\varphi) dx$ , that we can recognize as the formal heuristic expression for the *derivative measure* (2) introduced above.

At  $c = 1$ , a proliferation of large “bubbles” (the so-called “baby universes” which are relatively large amounts of area cut off by relatively small bottlenecks) is generally anticipated in the bulk of the random surface [40, 44, 53], or at its boundary in the case of a disk topology [54, 56]. We believe that this should correspond to the fact that the measure we construct is concentrated on a set of Hausdorff dimension zero.

However, the introduction of higher trace terms [42, 49, 72] in the action of the  $c = 1$  matrix model of two-dimensional quantum gravity is known to generate a “non-standard” random surface model with an even stronger concentration of bottlenecks. (See also the related detailed study of a MQM model for a  $c = 1$  string theory with vortices in [47].) As we shall see shortly, these non-standard constructions do not seem to correspond to our model, at least not so directly. In these constructions, one encounters a new critical behavior of the random surface, with a *critical* proliferation of spherical bubbles connected one to another by microscopic “wormholes”. This is reminiscent of the construction for  $c < 1, \gamma < 2$  of the *dual* phase of Liouville quantum gravity [4, 5, 21, 32, 48, 49, 50], where the associated random measure develops *atoms* [10, 28, 29].

The partition function of the non-standard  $c = 1$  (genus zero) random surface then scales as a function of the area  $\mathcal{A}$  as [42, 47, 49, 72]

$$\mathcal{Z} \propto \exp(\mu' \mathcal{A}) \mathcal{A}^{-3},$$

with an apparent suppression of logarithmic terms. This has been attributed to the appearance for  $c = 1$  of a tachyon field of the *atypical* form  $T(\varphi) \propto e^{2\varphi}$  [42, 47, 50]. Heuristically, this would seem to correspond to a measure of type (1), but we know that the latter vanishes for  $\gamma = 2$ . (See Proposition 19 below.) Furthermore, let us state here that there also exists for  $\gamma = 2$  a *logarithmically renormalized* measure built on (1), but we expect it to converge (up to constant factor) to the same measure as the derivative martingale (2). In order to model this “non-standard” theory, it might be necessary to modify the measures introduced here by explicitly introducing “atoms” on top of them, perhaps using the procedure described in [10, 28, 29] for adding atoms to  $\gamma < 2$  random measures. The rigorous definition and analysis of the random measure associated with the non-standard  $c = 1, \gamma = 2$  Liouville random surface with enhanced bottlenecks, as described in [42, 47, 72], thus seem to remain open.

Finally, we note that the *boundary* critical Liouville quantum gravity poses similar challenges. A subtle difference in logarithmic boundary behavior is predicted between the so-called *dilute* and *dense* phases of the  $O(2)$  model on a random disk [54, 56], which thus may differ in their boundary bubble structure. It also remains an open question whether the results about the conformal welding of two boundary arcs of random surfaces to produce SLE, as described in [71], can be extended to the case  $\gamma = 2$ .

## 2. Setup

### 2.1 Notations

For a Borelian set  $A \subset \mathbb{R}^d$ ,  $\mathcal{B}(A)$  stands for the Borelian sigma-algebra on  $A$ . All the considered fields are constructed on the same probability space  $(\Omega, \mathcal{F}, \mathbb{P})$ . We denote by  $\mathbb{E}$  the corresponding expectation.

### 2.2 $\star$ -scale invariant kernels

Here we introduce the Gaussian fields that we will use throughout the papers. We consider a family of centered stationary Gaussian processes  $((X_t(x))_{x \in \mathbb{R}^d})_{t \geq 0}$  where, for each  $t \geq 0$ , the process  $(X_t(x))_{x \in \mathbb{R}^d}$  has covariance given by:

$$K_t(x) = \mathbb{E}[X_t(0)X_t(x)] = \int_1^{e^t} \frac{k(ux)}{u} du \quad (6)$$

for some covariance kernel  $k$  satisfying  $k(0) = 1$ , of class  $C^1$  and vanishing outside a compact set (actually this latter condition is not necessary but it simplifies the presentation). We also assume that the process  $(X_t(x) - X_s(x))_{x \in \mathbb{R}^d}$  is independent of the processes  $((X_u(x))_{x \in \mathbb{R}^d})_{u \leq s}$  for all  $s < t$ . Put in other words, the mapping  $t \mapsto X_t(\cdot)$  has independent increments. Such a construction of Gaussian processes is carried out in [3]. For  $\gamma \geq 0$ , we consider the approximate Gaussian multiplicative chaos  $M_t^\gamma(dx)$  on  $\mathbb{R}^d$ :

$$M_t^\gamma(dx) = e^{\gamma X_t(x) - \frac{\gamma^2}{2} E[X_t(x)^2]} dx \quad (7)$$

It is well known [3, 45] that, almost surely, the family of random measures  $(M_t^\gamma)_{t>0}$  weakly converges as  $t \rightarrow \infty$  towards a random measures  $M^\gamma$ , which is non-trivial if and only if  $\gamma^2 < 2d$ . The purpose of this paper is to investigate the phase transition, that is  $\gamma^2 = 2d$ . Remind that we have:

**Proposition 1.** *For  $\gamma^2 = 2d$ , the standard construction (7) yields a vanishing limiting measure:*

$$\lim_{t \rightarrow \infty} M_t^{\sqrt{2d}}(dx) = 0 \quad \text{almost surely.} \quad (8)$$

Let us also mention that the authors in [3] have proved that, for  $\gamma^2 < 2d$ , the measure  $M^\gamma$  satisfies the following scale invariance relation, called  $\star$ -equation:

**Definition 2. Log-normal  $\star$ -scale invariance.** *The random Radon measure  $M^\gamma$  is lognormal  $\star$ -scale invariant: for all  $0 < \varepsilon \leq 1$ ,  $M^\gamma$  obeys the cascading rule*

$$(M^\gamma(A))_{A \in \mathcal{B}(\mathbb{R}^d)} \stackrel{\text{law}}{=} \left( \int_A e^{\gamma X_{\ln \frac{1}{\varepsilon}}(r) - \frac{\gamma^2}{2} E[X_{\ln \frac{1}{\varepsilon}}(r)^2]} \varepsilon^d M^{\gamma, \varepsilon}(dr) \right)_{A \in \mathcal{B}(\mathbb{R}^d)} \quad (9)$$

where  $X_{\ln \frac{1}{\varepsilon}}$  is the Gaussian process introduced in (6) and  $M^{\gamma, \varepsilon}$  is a random measure independent from  $X_{\ln \frac{1}{\varepsilon}}$  satisfying the scaling relation

$$(M^{\gamma, \varepsilon}(A))_{A \in \mathcal{B}(\mathbb{R}^d)} \stackrel{\text{law}}{=} \left( M^\gamma\left(\frac{A}{\varepsilon}\right) \right)_{A \in \mathcal{B}(\mathbb{R}^d)}. \quad (10)$$

□



Intuitively, this relation means that when you zoom in the measure  $M$ , you should observe the same behaviour up to an independent Gaussian factor. It has some canonical meaning since it is the exact continuous analog of the smoothing transformation intensively studied in the context of Mandelbrot's multiplicative cascades [33] or branching random walks [15, 58].

Observe that this equation perfectly makes sense for the value  $\gamma^2 = 2d$ . Therefore, to define a natural Gaussian multiplicative chaos at the value  $\gamma^2 = 2d$ , one has to look for a solution to this equation when  $\gamma^2 = 2d$  and conversely, each random measure candidate for being a Gaussian multiplicative chaos at the value  $\gamma^2 = 2d$  must satisfy this equation.

**Remark 3.** *The main motivation for considering  $\star$ -scale invariant kernels is the connection between the associated random measures and the  $\star$ -equation. Nevertheless, we stress that our proofs can be easily adapted for any Gaussian multiplicative chaos of log-correlated Gaussian fields "à la Kahane" [45]. In particular, we can construct the derivative martingale associated to exact scale invariant kernels [11, 67].*

### 3. Derivative martingale

One way to construct a solution to the  $\star$ -equation at the critical value  $\gamma^2 = 2d$  is to introduce the derivative martingale  $M'_t(dx)$  defined by:

$$M'_t(dx) := (\sqrt{2d}t - X_t(x))e^{\sqrt{2d}X_t(x) - d\mathbb{E}[X_t(x)^2]}dx.$$

It is plain to see that, for each open bounded set  $A \subset \mathbb{R}^d$ , the family  $(M'_t(A))_t$  is a martingale. Nevertheless, it is not nonnegative. It is therefore not obvious that such a family converges towards a (non trivial) positive limiting random variable. The following theorem is the main result of this section:

**Theorem 4.** *For each bounded open set  $A \subset \mathbb{R}^d$ , the martingale  $(M'_t(A))_{t \geq 0}$  converges almost surely towards a positive random variable denoted by  $M'(A)$ , such that  $M'(A) > 0$  almost surely. Consequently, almost surely, the (locally signed) random measures  $(M'_t(dx))_{t \geq 0}$  converge weakly as  $t \rightarrow \infty$  towards a positive random measure  $M'(dx)$ . This limiting measure has full support and is atomless. Furthermore, the measure  $M'$  is a solution to the  $\star$ -equation (9) with  $\gamma = \sqrt{2d}$ .*

Since  $M'_t(dx)$  is not uniformly non-negative when  $t < \infty$ , there are several complications involved in establishing its convergence to a non-negative limit (let alone the non-triviality of the limit). We have to introduce some further tools to study its convergence. These tools have already been introduced in the context of discrete multiplicative cascade models in order to study the corresponding derivative martingale (see [14]).

We denote by  $\mathcal{F}_t$  the sigma algebra generated by  $\{X_s(x); s \leq t, x \in \mathbb{R}^d\}$ . Given a Borelian set  $A \subset \mathbb{R}^d$  and parameters  $t, \beta > 0$ , we introduce the random variables

$$\begin{aligned} Z_t^\beta(A) &= \int_A (\sqrt{2d}t - X_t(x) + \beta) \mathbb{I}_{\{\tau^\beta > t\}} e^{\sqrt{2d}X_t(x) - d\mathbb{E}[X_t(x)^2]} dx \\ \tilde{Z}_t^\beta(A) &= \int_A (\sqrt{2d}t - X_t(x)) \mathbb{I}_{\{\tau^\beta > t\}} e^{\sqrt{2d}X_t(x) - d\mathbb{E}[X_t(x)^2]} dx, \end{aligned}$$

where, for each  $x \in A$ ,  $\tau^\beta$  is the stopping time adapted to the filtration  $\mathcal{G}_t = \sigma(X_s(x); s \leq t, x \in \mathbb{R}^d)$  defined by

$$\tau^\beta = \inf\{u > 0, X_u(x) - \sqrt{2du} > \beta\}.$$

What is the relation between  $Z_t^\beta(A)$  and  $M'_t(A)$ ? Roughly speaking, we will show that the convergence of  $(M'_t(A))_t$  towards a non-trivial object boils down to proving the convergence of  $(Z_t^\beta(A))_t$  towards a non-trivial object: we will prove that the difference  $Z_t^\beta(A) - \tilde{Z}_t^\beta(A)$  almost surely goes to 0 as  $t \rightarrow \infty$  and that  $\tilde{Z}_t^\beta(A)$  coincides with  $M'_t(A)$  for  $\beta$  large enough. In particular, we will prove that  $Z_t^\beta(A)$  converges towards a random variable  $Z^\beta(A)$  which itself converges as  $\beta \rightarrow \infty$  to the limit of  $M'_t(A)$  (as  $t \rightarrow \infty$ ). The details and proofs are gathered in the appendix.

As a direct consequence of our method of proof, we get the following properties of  $M'(dx)$ :

**Proposition 5.** *The positive random measure  $M'(dx)$  possesses moments of order  $q$  for all  $q \leq 0$ . It does not possess moments of order 1.*

Proof. As a direct consequence of the fact that the measure  $M'$  satisfies the  $\star$ -equation, it possesses moments of order  $q$  for all  $q \leq 0$ . This is a straightforward adaptation of the corresponding theorem in [8] (see also [12] for a proof in English). Since  $Z^\beta(dx)$  increases towards  $M'$  as  $\beta$  goes to infinity, we have  $M'(dx) \geq Z^\beta(dx)$  for any  $\beta$ . Since  $(Z_t^\beta)_t$  is a uniformly integrable martingale, we have  $\mathbb{E}[Z^\beta(A)] = \mathbb{E}[Z_0^\beta(A)] = \beta|A|$ , we deduce that  $\mathbb{E}[M'(A)] = +\infty$  for every bounded open set  $A$ .  $\square$

## 4. Conjectures

In this section, we present a few results we can prove about the  $\star$ -equation and some conjectures related to these results.

### 4.1 About the $\star$ -equation

Consider the  $\star$ -equation in great generality, that is:

**Definition 6. Log-normal  $\star$ -scale invariance.** *A random Radon measure  $M$  is log-normal  $\star$ -scale invariant if for all  $0 < \varepsilon \leq 1$ ,  $M$  obeys the cascading rule*

$$(M(A))_{A \in \mathcal{B}(\mathbb{R}^d)} \stackrel{\text{law}}{=} \left( \int_A e^{\omega_\varepsilon(r)} M^\varepsilon(dr) \right)_{A \in \mathcal{B}(\mathbb{R}^d)} \quad (11)$$

where  $\omega_\varepsilon$  is a stationary stochastically continuous Gaussian process and  $M^\varepsilon$  is a random measure independent from  $X_\varepsilon$  satisfying the scaling relation

$$(M^\varepsilon(A))_{A \in \mathcal{B}(\mathbb{R}^d)} \stackrel{\text{law}}{=} \left( M\left(\frac{A}{\varepsilon}\right) \right)_{A \in \mathcal{B}(\mathbb{R}^d)}. \quad (12)$$

$\square$

Observe that, in comparison with (9) and (10), we do not require the scaling factor to be  $\varepsilon^d$ . As stated in (11) and (12), it is proved in [3] that  $\mathbb{E}[e^{\omega_\varepsilon(r)}] = \varepsilon^d$  as soon as the measure possesses a moment of order  $1 + \delta$  for some  $\delta > 0$ . Roughly speaking, it remains

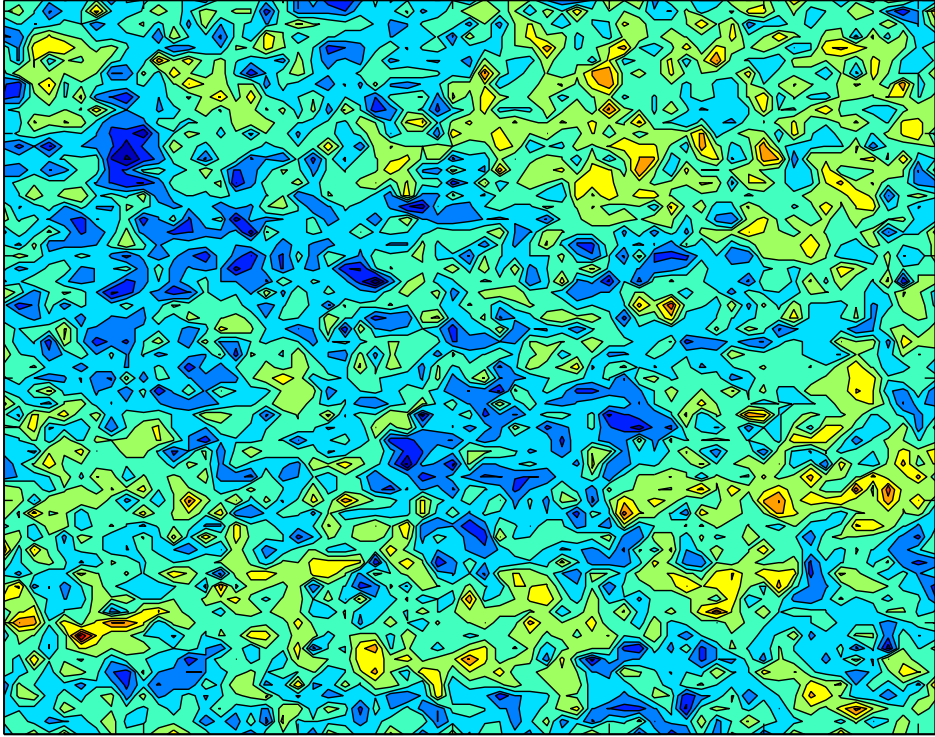


Figure 1: Height landscape of the derivative martingale measure plotted with a logarithmic scale color-bar, showing that the measure is very “peaked” (for  $t = 12$ , a multiplicative factor of about  $10^8$  stands between extreme values, i.e., between warm and cold colors).

to investigate situations when the measure does not possess a moment of order 1 and we will see that the scaling factor is then not necessarily  $\varepsilon^d$ .

Inspired by the discrete multiplicative cascade case (see [33]), our conjecture is that all the non-trivial ergodic solutions to this equation belong to one of the families we will describe below.

First we conjecture that there exists a  $\alpha \in ]0, 1]$  such that

$$\mathbb{E}[e^{\alpha\omega_\varepsilon(r)}] = \varepsilon^d.$$

Assuming this, it is proved in (see [3, 66]) that the Gaussian process  $\alpha\omega_{e^{-t}}$  has a covariance structure given by (6). More precisely, there exists some continuous covariance kernel  $k$  with  $k(0) = 1$  and  $\gamma^2 \leq 2d$  such that

$$\text{Cov}\left(\alpha\omega_{e^{-t}}(0), \alpha\omega_{e^{-t}}(x)\right) = \gamma^2 \int_1^{e^t} \frac{k(ux)}{u} du$$

We can then rewrite the process  $\omega$  as

$$\omega_{e^{-t}}(x) = \frac{\gamma}{\alpha} X_t(x) - \frac{\gamma^2}{2\alpha} t - \frac{d}{\alpha} t.$$

where  $(X_t)_t$  is the family of Gaussian fields introduced in Section 2. We now consider four cases, depending on the values of  $\alpha$  and  $\gamma$  (cases 2,3,4 are conjectures):

1. If  $\alpha = 1$  and  $\gamma^2 < 2d$  then the law of the solution  $M$  is the standard Gaussian multiplicative chaos  $M^\gamma$  (see (7)) up to a multiplicative constant. This case has been treated in [3].
2. If  $\alpha = 1$  and  $\gamma^2 = 2d$ , then the law of the solution  $M$  is that of the derivative martingale that we have constructed in this paper (Theorem 4), up to a multiplicative constant.
3. If  $\alpha < 1$  and  $\gamma^2 < 2d$ , then  $M$  is an atomic Gaussian multiplicative chaos as constructed in [10] up to a multiplicative constant. More precisely, the law can be constructed as follows:

- (a) sample a standard Gaussian multiplicative chaos

$$\bar{M}(dx) = e^{\gamma X(x) - \frac{\gamma^2}{2} \mathbb{E}[X(x)^2]} dx.$$

The measure  $\bar{M}$  is perfectly defined since  $\gamma^2 < 2d$ .

- (b) sample an independently scattered random measure  $N$  whose law, conditioned on  $\bar{M}$ , is characterized by

$$\forall q \geq 0, \quad \mathbb{E}[e^{-qN(A)} | \bar{M}] = e^{-q^\alpha \bar{M}(A)}.$$

Then the law of  $M$  is that of  $N$  up to a multiplicative constant.

4. If  $\alpha < 1$  and  $\gamma^2 = 2d$ , then  $M$  is an atomic Gaussian multiplicative chaos of a new type. More precisely, the law can be constructed as follows:

- (a) sample the derivative Gaussian multiplicative chaos

$$M'(dx) = (\sqrt{2d} \mathbb{E}[X(x)^2] - X(x)) e^{\sqrt{2d} X(x) - d \mathbb{E}[X(x)^2]} dx.$$

The measure  $M'$  is constructed as prescribed by Theorem 4.

- (b) sample an independently scattered random measure  $N$  whose law, conditioned on  $M'$ , is characterized by

$$\forall A \in \mathcal{B}(\mathbb{R}^d), \forall q \geq 0, \quad \mathbb{E}[e^{-qN(A)} | M'] = e^{-q^\alpha M'(A)}.$$

Then the law of  $M$  is that of  $N$  up to a multiplicative constant.

Notice that the results of our paper together with [3, 10] allow to prove existence of all the random measures described above. Therefore it remains to complete the uniqueness part of this statement.

**Remark 7.** The  $\alpha < 1, \gamma^2 < 2d$  case above has been used in [10, 28, 29] to give a mathematical understanding of the duality in Liouville Quantum Gravity: this corresponds to taking special values of the couple  $(\alpha, \gamma)$ . More precisely, we choose some parameter  $\bar{\gamma}^2 > 2d$ . If the measure  $M_{\bar{\gamma}}$  was well defined, it would satisfy the scaling relation:

$$(M_{\bar{\gamma}}(A))_{A \in \mathcal{B}(\mathbb{R}^d)} \stackrel{\text{law}}{=} \left( \int_A e^{\bar{\gamma} X_{\ln \frac{1}{\varepsilon}}(r) - \frac{\bar{\gamma}^2}{2} \mathbb{E}[X_{\ln \frac{1}{\varepsilon}}(r)^2]} \varepsilon^d M^{\bar{\gamma}, \varepsilon}(dr) \right)_{A \in \mathcal{B}(\mathbb{R}^d)} \quad (13)$$

where  $M^{\bar{\gamma}, \varepsilon}$  is a random measure independent from  $X_\varepsilon$  satisfying the scaling relation

$$(M^{\bar{\gamma}, \varepsilon}(A))_{A \in \mathcal{B}(\mathbb{R}^d)} \stackrel{\text{law}}{=} \left( M^{\bar{\gamma}}\left(\frac{A}{\varepsilon}\right) \right)_{A \in \mathcal{B}(\mathbb{R}^d)}. \quad (14)$$

Nevertheless, we know that  $M^{\bar{\gamma}}$  yields a vanishing measure. The idea is thus to use the  $\star$ -equation to determine what the unique solution of this scaling relation is. Writing  $\gamma = \frac{2d}{\bar{\gamma}} < 2d$  and  $\alpha = \frac{2d}{\bar{\gamma}^2}$ , it is plain to see that

$$\mathbb{E} \left[ \left( e^{\bar{\gamma} X_{\ln \frac{1}{\varepsilon}}(r) - \frac{\bar{\gamma}^2}{2} \mathbb{E}[X_{\ln \frac{1}{\varepsilon}}(r)^2]} \varepsilon^d \right)^\alpha \right] = \varepsilon^d.$$

Therefore we are in situation 4, which yields a natural candidate for Liouville duality [10, 28, 29].

## 4.2 Another construction of solutions to the critical $\star$ -equation

Recall that the measures  $M^\gamma$  for  $\gamma < 2$  are obtained as limits of (1) as  $X$  varies along approximations to a limit field. The measure constructed in Theorem 4 is defined analogously except that one replaces (1) with (2), which is minus the derivative of (1) at  $\gamma = \sqrt{2d}$ . If we could exchange the order of the differentiation and the limit-taking, we would conclude that the measure constructed in Theorem 4 is equal to

$$-\frac{\partial}{\partial \gamma} [M^\gamma]_{\gamma=\sqrt{2d}} = \lim_{\gamma \rightarrow \sqrt{2d}} \frac{1}{\sqrt{2d} - \gamma} M^\gamma.$$

We will not fully justify this order exchange here, but we will establish a somewhat weaker result. Namely, we show that one can at least obtain *some* solution to the  $\star$ -equation as a limit of this general type. This construction is inspired by a similar construction for discrete multiplicative cascades in [33]. More precisely, we have the following (proved in Section A.2):

**Proposition 8.** *There exist two increasing sequence  $(\lambda_n)_n$  and  $(\gamma_n)_n$ , with  $\gamma_n^2 < 2d$  and  $\gamma_n^2 \rightarrow 2d$  as  $n \rightarrow \infty$ , such that*

$$\lambda_n M^{\gamma_n}(dx) \stackrel{\text{law}}{\rightarrow} M^c(dx),$$

where  $M^c$  is a positive random measure satisfying (9).

The following conjecture is a consequence of the uniqueness conjecture for the  $\star$ -equation exposed in Section 4.1 above:

**Conjecture 9.** *The construction of Proposition 8 gives the same measure as the one described in Section 3 (up to some multiplicative constant). Moreover, the sequence  $(\lambda_n)_n$  can be chosen as  $\lambda_n = \frac{1}{\sqrt{2d - \gamma_n}}$  (in dimension  $d$ ).*

### 4.3 Glassy phase of log-correlated Gaussian potentials

The glassy phase of log-correlated Gaussian potentials is concerned with the behaviour of measures beyond the critical value  $\gamma^2 > 2d$ . More precisely, for  $\gamma^2 > 2d$ , consider the measure

$$M_t^\gamma(dx) = e^{\gamma X_t(x) - \frac{\gamma^2}{2} \mathbb{E}[X_t(x)^2]} dx.$$

The limiting measure, as  $t \rightarrow \infty$ , vanishes as proved in [45]. Therefore, it is natural to look for a suitable family of normalizing factors to make this measure converge. With the arguments used in subsection B.1 to compare with the results obtained in [9, 59], we can rigorously prove:

**Proposition 10.** *The renormalized family*

$$\left( t^{\frac{3\gamma}{2\sqrt{2d}}} e^{t\left(\frac{\gamma}{\sqrt{2}} - \sqrt{d}\right)^2} M_t^\gamma(dx) \right)_{t \geq 0}$$

*is tight. Furthermore, every converging subsequence is non trivial.*

The above proposition can be obtained using the results in [9, 59] and Section B.1 (tightness statement). Using a result in [17] about the behaviour of the maximum of the discrete GFF gives you that every converging subsequence is non trivial.

We now formulate a conjecture about the limiting law of this family. Assuming that the above renormalized family converges in law (so we strengthen tightness into convergence), it turns out that the limit  $M^\gamma$  of this renormalized family necessarily satisfies the following  $\star$ -equation

$$M^\gamma(dx) = e^{\gamma X_{\ln \frac{1}{\varepsilon}}(x) - \sqrt{\frac{d}{2}} \gamma \mathbb{E}[X_{\ln \frac{1}{\varepsilon}}(x)^2]} \varepsilon^{\sqrt{\frac{d}{2}} \gamma} \overline{M}^\gamma\left(\frac{dx}{\varepsilon}\right)$$

where  $\overline{M}^\gamma$  is a random measure with the same law as  $M^\gamma$  and independent of the process  $(X_t(x))_{x \in \mathbb{R}^d}$ . Setting  $\alpha = \frac{\sqrt{2d}}{\gamma} \in ]0, 1[$ , this equation can be rewritten as

$$M^\gamma(dx) = e^{\frac{\sqrt{2d}}{\alpha} X_{\ln \frac{1}{\varepsilon}}(x) - \frac{d}{\alpha} \mathbb{E}[X_{\ln \frac{1}{\varepsilon}}(x)^2]} \varepsilon^{d/\alpha} \overline{M}^\gamma\left(\frac{dx}{\varepsilon}\right).$$

Therefore, assuming that the conjectures about uniqueness of the  $\star$ -equation are true, we have that:

**Conjecture 11.**

$$t^{\frac{3\gamma}{2\sqrt{2d}}} e^{t\left(\frac{\gamma}{\sqrt{2}} - \sqrt{d}\right)^2} M_t^\gamma(dx) \xrightarrow{\text{law}} c_\gamma N_\alpha(dx), \quad \text{as } t \rightarrow \infty \quad (15)$$

where  $c_\gamma$  is a positive constant depending on  $\gamma$  and the law of  $N_\alpha$  is given, conditioned on the derivative martingale  $M'$ , by an independently scattered random measure the law of which is characterized by

$$\forall A \in \mathcal{B}(\mathbb{R}^d), \forall q \geq 0, \quad \mathbb{E}[e^{-q N_\alpha(A)} | M'] = e^{-q^\alpha M'(A)}.$$

In particular, physicists are interested in the behaviour of the Gibbs measure associated to  $M_t^\gamma(dx)$  on a ball  $B$ . It is the measure renormalized by its total mass:

$$\forall A \in \mathcal{B}(B), \quad G_t^\gamma(dx) = \frac{M_t^\gamma(dx)}{M_t^\gamma(B)}.$$

From (15), we deduce

$$G_t^\gamma(dx) \xrightarrow{\text{law}} \frac{N_\alpha(dx)}{N_\alpha(B)}, \quad \text{as } t \rightarrow \infty. \quad (16)$$

The size reordered atoms of the latter object form a Poisson-Dirichlet process as conjectured by physicists [6, 19]. Nevertheless, we point out that this conjecture is more powerful than the Poisson-Dirichlet conjecture since it also makes precise the spatial localization of the atoms. We stress that this result has been proved in the case of branching random walks [9], built on the work [59].

#### 4.4 About the maximum of the log-correlated Gaussian random variables

It is proved in [17] (in fact  $d = 2$  in [17] but this is general) that the family

$$\left( \sup_{x \in [0,1]^d} X_t(x) - \sqrt{2dt} + \frac{3}{2\sqrt{2d}} \ln t \right)_{t \geq 0}$$

is tight. One can thus conjecture by analogy with branching random walk case ([2]):

**Conjecture 12.**

$$\sup_{x \in [0,1]^d} X_t(x) - \sqrt{2dt} + \frac{3}{2\sqrt{2d}} \ln t \rightarrow G_d, \quad \text{in law as } t \rightarrow \infty$$

where the distribution  $G_d$  is given in terms of the distribution of the limit of the derivative martingale  $M'([0,1]^d)$ . More precisely, there exists some constant  $c > 0$  such that:

$$\mathbb{E}[e^{-qG_d}] = \frac{1}{c^q} \Gamma\left(1 + \frac{q}{\sqrt{2d}}\right) \mathbb{E}\left[(M'([0,1]^d))^{-\frac{q}{\sqrt{2d}}}\right] \quad (17)$$

Here we give a heuristic derivation of identity 17 using the conjectures of the above subsections. By performing an inversion of limits: ( $\gamma \leftrightarrow t$  and conjecturing  $\frac{\ln c_\gamma}{\gamma} \rightarrow \ln c$  as  $\gamma \rightarrow \infty$ ):

$$\begin{aligned} \mathbb{E}[e^{-qG_d}] &= \lim_{\gamma \rightarrow +\infty} \lim_{t \rightarrow +\infty} \mathbb{E}\left[\exp\left[-q\gamma^{-1} \ln t \frac{3\gamma}{2\sqrt{2d}} e^{t\left(\frac{\gamma}{\sqrt{2}} - \sqrt{d}\right)^2} M_t^\gamma([0,1]^d)\right]\right] \\ &= \lim_{\gamma \rightarrow +\infty} \mathbb{E}\left[(c_\gamma N_{\alpha=\frac{\sqrt{2d}}{\gamma}}([0,1]^d))^{-\frac{q}{\gamma}}\right] \\ &= \frac{1}{c^q} \Gamma\left(1 + \frac{q}{\sqrt{2d}}\right) \mathbb{E}\left[(M'([0,1]^d))^{-\frac{q}{\sqrt{2d}}}\right] \end{aligned}$$

where, for  $x > 0$ ,  $\Gamma(x) = \int_0^\infty t^{x-1} e^{-t} dt$  is the standard Gamma function. Therefore  $G_d$  can be viewed as a modified Gumbel law. Otherwise stated, we conjecture:

$$\lim_{t \rightarrow \infty} \mathbb{P}\left(\sup_{x \in [0,1]^d} X_t(x) - \sqrt{2dt} + \frac{3}{2\sqrt{2d}} \ln t \leq x\right) = \mathbb{E}[e^{-ce^{-x} M'([0,1]^d)}].$$

We point out that we recover in a heuristic and alternative way the result proved rigorously in [2] for branching random walks.

## A. Proofs

### A.1 Proofs of results from Section 3

We follow the notations of Section 3. We first investigate the convergence of  $(Z_t^\beta(A))_{t \geq 0}$ :

**Proposition 13.** *The process  $(Z_t^\beta(A))_{t \geq 0}$  is a continuous positive  $\mathcal{F}_t$ -martingale and thus converges almost surely towards a positive random variable denoted by  $Z^\beta(A)$ .*

*Proof.* Proving that  $(Z_t^\beta(A))_{t \geq 0}$  is a martingale boils down to proving, for each  $x \in A$ , that

$$\mathbb{E}[(\sqrt{2d}t - X_t(x) + \beta) \mathbb{1}_{\{\tau^\beta > t\}} e^{\sqrt{2d}X_t(x) - d\mathbb{E}[X_t(x)^2]} | \mathcal{F}_s] = (\sqrt{2d}s - X_s(x) + \beta) \mathbb{1}_{\{\tau^\beta > s\}} e^{\sqrt{2d}X_s(x) - d\mathbb{E}[X_s(x)^2]}.$$

Let us first stress that, for each  $x \in A$ , the process  $(X_t(x))_{t \geq 0}$  is a Brownian motion. Furthermore, we can use the (weak) Markov property of the Brownian motion to get

$$\begin{aligned} & \mathbb{E}[(\sqrt{2d}t - X_t(x) + \beta) \mathbb{1}_{\{\tau^\beta > t\}} e^{\sqrt{2d}X_t(x) - d\mathbb{E}[X_t(x)^2]} | \mathcal{F}_s] \\ &= \mathbb{1}_{\{\tau^\beta > s\}} e^{\sqrt{2d}X_s(x) - d\mathbb{E}[X_s(x)^2]} F(\sqrt{2d}s - X_s(x) + \beta) \end{aligned}$$

where

$$F(y) = \mathbb{E}[(\sqrt{2d}(t-s) - X_{t-s}(x) + y) \mathbb{1}_{\{\tau(X_{t-s}(x) - \sqrt{2d}\cdot) > t-s\}} e^{\sqrt{2d}X_{t-s}(x) - d\mathbb{E}[X_{t-s}(x)^2]}]$$

and, for a stochastic process  $Y$ ,  $\tau(Y)$  is defined by

$$\tau(Y) = \inf\{u > 0; Y_u > y\}.$$

Using the Girsanov transform yields

$$F(y) = \mathbb{E}[(-\sqrt{2d}X_{t-s}(x) + y) \mathbb{1}_{\{\tau(\sqrt{2d}X_{t-s}(x)) > t-s\}}].$$

Hence we get

$$F(y) = \mathbb{E}[(-\sqrt{2d}X_{t-s}(x) + y) \mathbb{1}_{\{\tau(\sqrt{2d}X_{t-s}(x)) > t-s\}}] = \mathbb{E}[(-\sqrt{2d}X_{t-s \wedge \tau(X_{t-s}(x))}(x) + y)] = y$$

by the optional stopping theorem. This completes the proof.  $\square$

**Proposition 14.** *Assume that  $A$  is a bounded open set. Then, the martingale  $(Z_t^\beta(A))_{t \geq 0}$  is regular.*

*Proof.* Without loss of generality, we may assume  $k(u) = 0$  for  $|u| > 1$  since  $k$  has a compact support (so we just assume that the smallest ball centered at 0 containing the support of  $k$  has radius 1 instead of  $R$  for some  $R > 0$ ). We may also assume that  $A \subset B(0, 1/2)$ : indeed, any bigger bounded set can be recovered with finitely many balls with radius less than  $\frac{1}{2}$ . Finally, we will also assume that  $x \cdot \nabla k(x) \leq 0$ . This condition need not be true over the whole  $\mathbb{R}^d$ . Nevertheless, it must be valid in a neighborhood of 0 (and even  $x \cdot \nabla k(x) < 0$  if  $x \neq 0$ ) in order not to contradict the fact that  $k$  is positive definite and non constant. Therefore, even if it means considering a smaller set  $A$ , we may (and will) assume that this condition holds.



Write for  $x \in \mathbb{R}^d$ :

$$f_t^\beta(x) = (\sqrt{2dt} - X_t(x) + \beta) \mathbb{1}_{\{\tau^\beta > t\}} e^{\sqrt{2d}X_t(x) - d\mathbb{E}[X_t(x)^2]}.$$

Define then the analog of the *rooted random measure* in [30] (also called the ‘‘Peyri re probability measure’’ in this context [45])

$$\Theta_t^\beta = \frac{1}{|A|^\beta} f_t^\beta(x) dx d\mathbb{P}.$$

It is a probability measure on  $\mathcal{B}(A) \otimes \mathcal{F}_t$ . We denote by  $\Theta_t^\beta(\cdot | \mathcal{G})$  the conditional expectation of  $\Theta_t^\beta$  given some sub- $\sigma$ -algebra  $\mathcal{G}$  of  $\mathcal{B}(A) \otimes \mathcal{F}_t$ . If  $y$  is a  $\mathcal{B}(A) \otimes \mathcal{F}_t$ -measurable random variable on  $A \times \Omega$ , we denote by  $\Theta_t^\beta(\cdot | y)$  the conditional expectation of  $\Theta_t^\beta$  given the  $\sigma$ -algebra generated by  $y$ .

We first observe that

$$\Theta_t^\beta(\cdot | x) = \frac{1}{\beta} f_t^\beta(x) d\mathbb{P}.$$

Therefore, under  $\Theta_t^\beta(\cdot | x)$ , the process  $(X_t(x) - \sqrt{2dt} - \beta)_{s \leq t}$  has the law of  $(-\beta_s)_{s \leq t}$  where  $(\beta_s)_{s \leq t}$  is a 3d-Bessel process starting from  $\beta$ . Let us now recall the following result (see [60]):

**Theorem 15.** *Let  $X$  be a 3d-Bessel process on  $\mathbb{R}_+$  started from  $x \geq 0$  with respect to the law  $\mathbb{P}_x$ .*

1. *Suppose that  $\phi \uparrow \infty$  such that  $\int_1^\infty \frac{\phi(t)^3}{t} e^{-\frac{1}{2}\phi(t)^2} dt < +\infty$ . Then*

$$\mathbb{P}_x \left( X_t > \sqrt{t}\phi(t) \text{ i.o. as } t \uparrow +\infty \right) = 0.$$

2. *Suppose that  $\psi \downarrow 0$  such that  $\int_1^\infty \frac{\psi(t)}{t} dt < +\infty$ . Then*

$$\mathbb{P}_x \left( X_t < \sqrt{t}\psi(t) \text{ i.o. as } t \uparrow +\infty \right) = 0.$$

Therefore, we can choose  $R$  large enough such that the set

$$B = \left\{ \forall t \geq 0; \frac{\sqrt{t}}{R(\ln(2+t))^2} \leq \beta_t \leq R(1 + \sqrt{t \ln(1+t)}) \right\}$$

has a probability arbitrarily close to 1, say  $1 - \varepsilon$ .

We can now prove the uniform integrability of  $(Z_t^\beta(A))_t$ , i.e.

$$\lim_{\delta \rightarrow \infty} \limsup_{t \rightarrow \infty} \mathbb{E}[Z_t^\beta(A) \mathbb{1}_{\{Z_t^\beta(A) > \delta\}}] = 0.$$

Observe that

$$\mathbb{E}[Z_t^\beta(A) \mathbb{1}_{\{Z_t^\beta(A) > \delta\}}] = \beta |A| \Theta_t^\beta(Z_t^\beta(A) > \delta).$$

Therefore it suffices to prove that

$$\lim_{\delta \rightarrow \infty} \limsup_{t \rightarrow \infty} \Theta_t^\beta(Z_t^\beta(A) > \delta) = 0.$$

We have:

$$\begin{aligned}
& \Theta_t^\beta(Z_t^\beta(A) > \delta) \\
&= \frac{1}{|A|} \int_A \Theta_t^\beta(Z_t^\beta(A) > \delta | x) dx \\
&= \frac{1}{|A|} \int_A \Theta_t^\beta\left(\Theta_t^\beta(Z_t^\beta(A) > \delta | x, (X_s(x))_{s \leq t}) | x\right) dx \\
&\leq \varepsilon + \frac{1}{|A|} \int_A \Theta_t^\beta\left(\Theta_t^\beta(Z_t^\beta(A) > \delta | x, (X_s(x))_{s \leq t}, B) | x\right) dx \\
&\leq \varepsilon + \frac{1}{|A|} \int_A \Theta_t^\beta\left(\Theta_t^\beta(Z_t^\beta(B(x, e^{-t})) > \frac{\delta}{2} | x, (X_s(x))_{s \leq t}, B) | x\right) dx \\
&\quad + \frac{1}{|A|} \int_A \Theta_t^\beta\left(\Theta_t^\beta(Z_t^\beta(B(x, e^{-t})^c) > \frac{\delta}{2} | x, (X_s(x))_{s \leq t}, B) | x\right) dx \\
&\stackrel{def}{=} \varepsilon + \Pi_1 + \Pi_2.
\end{aligned}$$

We are now going to estimate  $\Pi_1, \Pi_2$ . Observe that the two quantities roughly reduces to expressions like ( $K$  is a ball or its complementary)

$$\Theta_t^\beta\left(F\left(\int_K f_t^\beta(w) dw\right) | x, (X_s(x))_{s \leq t}, B\right).$$

To carry out our computations, we thus have to compute the law of the process  $(X_s(w))_{s \leq t}$  knowing that of the process  $(X_s(x))_{s \leq t}$ . To that purpose, we will use the following lemma whose proof is left to the reader since it follows from a standard (though not quite direct) computation of covariances for Gaussian processes:

**Lemma 16.** *For  $w \neq x$  and all  $s_0$ , the law of the process  $(X_s(w))_{s \leq s_0}$  can be decomposed as:*

$$X_s(w) = P_s^{x,w} + Z_s^{x,w}$$

where:

-  $P_s^{x,w} = -\int_0^s g_{x,w}(u) X_u(x) du + K'_s(x-w) X_s(x)$  is measurable with respect to the  $\sigma$ -algebra generated by  $(X_s(x))_{s \leq s_0}$  and  $g_{x,w}(u) = K''_u(x-w)$ ,

- the process  $(Z_s^{x,w})_{0 \leq s \leq s_0}$  is a centered Gaussian process independent of  $(X_s(x))_{0 \leq s \leq s_0}$  with covariance kernel

$$q_{x,w}(s, s') \stackrel{def}{=} \mathbb{E}[Z_{s'}^{x,w} Z_s^{x,w}] = s \wedge s' - \int_0^{s \wedge s'} (K'_u(x-w))^2 du.$$

We first estimate  $\Pi_2$  with the above lemma. It is enough to estimate properly the quantity

$$\tilde{\Pi}_2 = \Theta_t^\beta(Z_t^\beta(B(x, e^{-t})^c) > \frac{\delta}{2} | x, (X_s(x))_{s \leq t}, B). \quad (18)$$

Notice that:

$$\tilde{\Pi}_2 \leq \frac{2}{\delta} \int_{B(x, e^{-t})^c} \Theta_t^\beta(f_t^\beta(w) | x, (X_s(x))_{s \leq t}, B) dw. \quad (19)$$

For each  $w \in B(x, e^{-t})^c$ , i.e. such that  $|w-x| > e^{-t}$ , let us define  $s_0 = \ln \frac{1}{|x-w|}$ . Notice that  $s_0$  is the time at which the evolution of  $(X_s(w) - X_{s_0}(w))_{s_0 \leq s \leq t}$  becomes independent of the process  $(X_s(x))_{0 \leq s \leq t}$ . Under  $\Theta_t^\beta$ , the process  $(X_s(w))_{s_0 \leq s \leq t}$  can be rewritten as:

$$X_s(w) = X_{s_0}(w) + W_{s-s_0}$$

where  $W$  is a standard Brownian motion independent of the processes  $(X_s(x))_{0 \leq s \leq t}$  and  $(X_s(w))_{0 \leq s \leq s_0}$ . This can be checked by a straightforward computation of covariance. Therefore we get:

$$\begin{aligned} & \Theta_t^\beta(f_t^\beta(w)|x, (X_s(x))_{s \leq t}) \\ &= \frac{1}{\beta} \mathbb{E} \left[ (\sqrt{2d}t - X_t(w) + \beta) \mathbb{1}_{\{\sup_{[0,t]} X_u(w) - \sqrt{2d}u \leq \beta\}} e^{\sqrt{2d}X_t(w) - dt} |x, (X_s(x))_{s \leq t} \right] \\ &= \frac{1}{\beta} \mathbb{E} \left[ (\sqrt{2d}s_0 + \sqrt{2d}(t-s_0) - X_{s_0}(w) - W_{t-s_0} + \beta) \mathbb{1}_{\{\sup_{[0,s_0]} X_u(w) - \sqrt{2d}u \leq \beta\}} \right. \\ & \quad \left. \mathbb{1}_{\{\sup_{[s_0,t]} X_{s_0}(w) + \sqrt{2d}s_0 + W_{u-s_0} - \sqrt{2d}(u-s_0) \leq \beta\}} e^{\sqrt{2d}X_{s_0}(w) - ds_0} e^{\sqrt{2d}W_{t-s_0} - d(t-s_0)} |x, (X_s(x))_{s \leq t} \right] \\ &= \frac{1}{\beta} \mathbb{E} \left[ (\sqrt{2d}s_0 - X_{s_0}(w) + \beta) \mathbb{1}_{\{\sup_{[0,s_0]} X_u(w) - \sqrt{2d}u \leq \beta\}} e^{\sqrt{2d}X_{s_0}(w) - ds_0} |x, (X_s(x))_{s \leq t} \right], \end{aligned}$$

by the stopping time theorem. From Lemma 16, we deduce:

$$\begin{aligned} & \Theta_t^\beta(f_t^\beta(w)|x, (X_s(x))_{s \leq t}) \\ &= \frac{1}{\beta} \mathbb{E} \left[ (\sqrt{2d}s_0 - P_{s_0}^{x,w} - Z_{s_0}^{x,w} + \beta) \mathbb{1}_{\{\sup_{[0,s_0]} P_{s_0}^{x,w} + Z_{s_0}^{x,w} - \sqrt{2d}u \leq \beta\}} e^{\sqrt{2d}(P_{s_0}^{x,w} + Z_{s_0}^{x,w}) - ds_0} |x, (X_s(x))_{s \leq t} \right] \\ &\leq \frac{1}{\beta} \mathbb{E} \left[ ((\sqrt{2d}s_0 - P_{s_0}^{x,w} - Z_{s_0}^{x,w} + \beta)^2 + 1) e^{\sqrt{2d}(P_{s_0}^{x,w} + Z_{s_0}^{x,w}) - ds_0} |x, (X_s(x))_{s \leq t} \right] \\ &= \frac{1}{\beta} \left( (\sqrt{2d}(s_0 - q_{x,w}(s_0, s_0)) - P_{s_0}^{x,w} + \beta)^2 + q_{x,w}(s_0, s_0) \right) e^{\sqrt{2d}P_{s_0}^{x,w} - d(s_0 - q_{x,w}(s_0, s_0))}. \quad (20) \end{aligned}$$

We make two observations. First, we point out that the quantity  $q_{x,w}(s_0, s_0)$  is bounded by a constant only depending on  $k$  since

$$\begin{aligned} q_{x,w}(s_0, s_0) &= s_0 - \int_0^{s_0} (K'_u(x-w))^2 du \\ &= \int_0^{s_0} [1 - (k(e^u(x-w)))^2] du \\ &= \int_{|x-w|}^1 \left( 1 - k\left(y \frac{x-w}{|x-w|}\right)^2 \right) \frac{1}{y} dy \\ &\leq C \end{aligned}$$

where  $C$  can be defined as  $\sup_{z \in B(0,1)} \frac{1-k(z)^2}{|z|}$ . So the quantity  $q_{x,w}(s_0, s_0)$  won't play a part in the forthcoming computations.

Second, we want to express the random variable  $P_{s_0}^{x,w}$  as a function of the Bessel process  $(X_u(x) - \sqrt{2d}u - \beta)_u$  in order to use the fact that we can control the paths of this latter

process (we will condition by the event  $B$ ). Therefore we set

$$\begin{aligned}
Y_{s_0}^{x,w} &= - \int_0^{s_0} g_{x,w}(u)(X_u(x) - \sqrt{2d}u - \beta) du \\
&= - \int_0^{s_0} g_{x,w}(u)X_u(x) du - \sqrt{2d}K_{s_0}(x-w) + \beta(k(e^{s_0}(x-w)) - k(x-w)) \\
&= P_{s_0}^{x,w} - \sqrt{2d}K_{s_0}(x-w) + \beta(k(e^{s_0}(x-w)) - k(x-w)).
\end{aligned} \tag{21}$$

Therefore we can write:

$$Y_{s_0}^{x,w} = P_{s_0}^{x,w} - \sqrt{2d}s_0 + \theta_{x,w}(s_0)$$

for some function  $\theta_{x,w}$  that is bounded independently of  $x, w, t$  since  $k$  is bounded over  $\mathbb{R}^d$ . Plugging these estimates into (20), we obtain:

$$\begin{aligned}
&\Theta_t^\beta(f_t^\beta(w)|x, (X_s(x))_{s \leq t}, B) \\
&= \frac{1}{\beta} \left( (\theta_{x,w}(s_0) - Y_{s_0}^{x,w})^2 + q_{x,w}(s_0, s_0) \right) e^{\sqrt{2d}Y_{s_0}^{x,w} + ds_0 + dq_{x,w}(s_0, s_0) - \sqrt{2d}\theta_{x,w}(s_0)} \\
&\leq \frac{1}{\beta} \left( (C - Y_{s_0}^{x,w})^2 + C \right) e^{\sqrt{2d}Y_{s_0}^{x,w} + ds_0 + C}
\end{aligned} \tag{22}$$

for some constant  $C$  that does not depend on  $x, w, t, A$ . Now we plug the exact expression of  $g_{x,w}$ :

$$g_{x,w}(u) = \sum_{i=1}^d (x-w)_i e^u \partial_i k(e^u(x-w))$$

into the definition (21) of  $Y_{s_0}^{x,w}$ :

$$\begin{aligned}
Y_{s_0}^{x,w} &= \int_0^{\ln \frac{1}{|x-w|}} \sum_{i=1}^d (x-w)_i e^u \partial_i k(e^u(x-w)) (\sqrt{2d}u + \beta - X_u(x)) du \\
&= \int_{|x-w|}^1 y \frac{x-w}{|x-w|} \cdot \nabla k\left(y \frac{x-w}{|x-w|}\right) \left(\sqrt{2d} \ln \frac{y}{|x-w|} + \beta - X_{\ln \frac{y}{|x-w|}}(x)\right) dy
\end{aligned}$$

Moreover the constraint for the Bessel process, valid on  $B$ ,

$$\forall u \geq 0, \quad \frac{\sqrt{u}}{R(\ln(2+u))^2} \leq \beta - X_u(x) + \sqrt{2d}u \leq R(1 + \sqrt{u \ln(1+u)}) \tag{23}$$

implies that (here we use the relation  $x \cdot \nabla k(x) \leq 0$ )

$$Y_{s_0}^{x,w} \geq R \int_{|x-w|}^1 y \frac{x-w}{|x-w|} \cdot \nabla k\left(y \frac{x-w}{|x-w|}\right) \left(1 + \sqrt{\ln \frac{y}{|x-w|} \ln\left(1 + \ln \frac{y}{|x-w|}\right)}\right) dy \tag{24}$$

$$Y_{s_0}^{x,w} \leq R \int_{|x-w|}^1 y \frac{x-w}{|x-w|} \cdot \nabla k\left(y \frac{x-w}{|x-w|}\right) \frac{\sqrt{\ln \frac{y}{|x-w|}}}{\ln\left(2 + \ln \frac{y}{|x-w|}\right)^2} dy. \tag{25}$$

Using rough estimates yields

$$-C_R \left(1 + \sqrt{\ln \frac{1}{|x-w|} \ln\left(1 + \ln \frac{1}{|x-w|}\right)}\right) du \leq Y_{s_0}^{x,w} \leq -C_R \frac{\sqrt{\ln \frac{1}{|x-w|}}}{\ln\left(2 + \ln \frac{1}{|x-w|}\right)^2} \tag{26}$$

for some constant  $C_R$  depending on  $R$  and on the function  $x \mapsto x \cdot \nabla k(x)$ . Plugging these estimates into (22) yields (the constant  $C$  may change, depending on the value of  $C_R$ )

$$\Theta_t^\beta(f_t^\beta(w)|x, (X_s(x))_{s \leq t}, B) \leq \frac{e^C}{\beta|x-w|^d} G\left(\ln \frac{1}{|x-w|}\right) \quad (27)$$

where

$$G(y) = \left(1 + \sqrt{y \ln(1+y)}\right)^2 e^{-\sqrt{2d}C \frac{\sqrt{y}}{\ln(2+y)^2}}$$

Finally, by gathering the above estimates (18), (19) and (27) and then making successive changes of variables, we obtain ( $V_d$  stands for the area of the unit sphere of  $\mathbb{R}^d$ ):

$$\begin{aligned} \Pi_2 &= \frac{1}{|A|} \int_A \Theta_t^\beta \left( \Theta_t^\beta (Z_t^\beta(B(x, e^{-t})^c) > \frac{\delta}{2} |x, (X_s(x))_{s \leq t}, B) |x \right) dx \\ &= \frac{1}{|A|} \int_A \Theta_t^\beta (\tilde{\Pi}_2 |x) dx \\ &\leq \frac{2}{|A|\delta} \int_A \int_{B(x, e^{-t})^c} \frac{e^C}{\beta|x-w|^d} G\left(\ln \frac{1}{|x-w|}\right) dx dw \\ &\leq \frac{2V_d}{\delta} \int_{e^{-t}}^1 \frac{e^C}{\beta r^d} G\left(\ln \frac{1}{r}\right) r^{d-1} dr \\ &\leq \frac{2V_d e^C}{\delta \beta} \int_0^t G(u) du. \end{aligned}$$

Since  $G$  is integrable, this quantity is obviously bounded by a quantity that goes to 0 when  $\delta$  becomes large uniformly with respect to  $t$ . This concludes estimating  $\Pi_2$ .

We now estimate  $\Pi_1$ . Once again, it is enough to estimate the quantity

$$\tilde{\Pi}_1 = \Theta_t^\beta (Z_t^\beta(B(x, e^{-t})) > \frac{\delta}{2} |x, (X_s(x))_{s \leq t}, B), \quad (28)$$

which is less than

$$\tilde{\Pi}_1 \leq \frac{2}{\delta} \int_{B(x, e^{-t})} \Theta_t^\beta (f_t^\beta(w)|x, (X_s(x))_{s \leq t}, B) dw. \quad (29)$$

This time, for  $|w-x| < e^{-t}$ , there is no need to "cut" the process  $(X_s(w))_{s \leq t}$  at level  $s = \ln \frac{1}{|x-w|}$ . We can directly use Lemma 16 to get:

$$\begin{aligned} &\Theta_t^\beta (f_t^\beta(w)|x, (X_s(x))_{s \leq t}, B) \\ &= \frac{1}{\beta} \mathbb{E} \left[ (\sqrt{2d}t - P_t^{x,w} - Z_t^{x,w} + \beta) \mathbb{1}_{\{\sup_{[0,t]} P_t^{x,w} + Z_t^{x,w} - \sqrt{2d}u \leq \beta\}} e^{\sqrt{2d}(P_t^{x,w} + Z_t^{x,w}) - dt} |x, (X_s(x))_{s \leq t}, B \right] \\ &\leq \frac{1}{\beta} \mathbb{E} \left[ ((\sqrt{2d}t - P_t^{x,w} - Z_t^{x,w} + \beta)^2 + 1) e^{\sqrt{2d}(P_t^{x,w} + Z_t^{x,w}) - dt} |x, (X_s(x))_{s \leq t}, B \right] \\ &= \frac{1}{\beta} \left( (\sqrt{2d}(t - q_{x,w}(t, t)) - P_t^{x,w} + \beta)^2 + q_{x,w}(t, t) \right) e^{\sqrt{2d}P_t^{x,w} - d(t - q_{x,w}(t, t))}. \end{aligned}$$

Once again, the quantity  $q_{x,w}(t, t)$  is bounded by a constant only depending on  $k$  (not on  $t$ ). Second, for  $s \leq t$ , we define the process

$$Y_s^{x,w} = - \int_0^s g_{x,w}(u) (X_u(x) - \sqrt{2d}u - \beta) du + K'_G(x-w) (X_s(x) - \sqrt{2d}s - \beta),$$

which turns out to be equal to

$$Y_s^{x,w} = P_s^{x,w} - \sqrt{2d}s + \theta_{x,w}(s)$$

for some function  $\theta_{x,w}$  that is bounded independently of  $x, w, s, t, A$ . We deduce:

$$\begin{aligned} & \Theta_t^\beta(f_t^\beta(w)|x, (X_s(x))_{s \leq t}, B) \\ &= \frac{1}{\beta} \left( (\theta_{x,w}(t) - Y_t^{x,w})^2 + q_{x,w}(t, t) \right) e^{\sqrt{2d}Y_t^{x,w} + dt + dq_{x,w}(t, t) - \sqrt{2d}\theta_{x,w}(t)} \\ &\leq \frac{1}{\beta} \left( (C - Y_t^{x,w})^2 + C \right) e^{\sqrt{2d}Y_t^{x,w} + dt + C} \end{aligned} \quad (30)$$

for some constant  $C$  that does not depend on  $x, w, t$ . Once again on  $B$ , the Bessel process evolves in the strip (23), implying that the process  $Y^{x,w}$  is bound to live in the strip (we stick to the previous notations)

$$-C_R \left( 1 + \sqrt{t \ln(1+t)} \right) du \leq Y_t^{x,w} \leq -C_R \frac{\sqrt{t}}{\ln(2+t)^2} \quad (31)$$

for some constant  $C_R$ . Plugging these estimates into (30) yields (the constant  $C$  may change, depending on the value of  $C_R$ )

$$\Theta_t^\beta(f_t^\beta(w)|x, (X_s(x))_{s \leq t}, B) \leq \frac{e^C}{\beta} G(t) e^{dt} \quad (32)$$

where the function  $G$  is still defined by

$$G(t) = \left( 1 + \sqrt{t \ln(1+t)} \right)^2 e^{-\sqrt{2d}C \frac{\sqrt{t}}{\ln(2+t)^2}}.$$

Notice that this estimate differs from that obtained for  $\tilde{\Pi}_2$  because of the  $e^{dt}$  factor. It will be absorbed by the volume of the ball  $B(x, e^{-t})$  that we will integrate over. Finally, by using (32), we obtain:

$$\begin{aligned} \Pi_1 &= \frac{1}{|A|} \int_A \Theta_t^\beta \left( \Theta_t^\beta(Z_t^\beta(B(x, e^{-t}))) > \frac{\delta}{2} |x, (X_s(x))_{s \leq t}, B) |x \right) dx \\ &= \frac{1}{|A|} \int_A \Theta_t^\beta(\tilde{\Pi}_2|x) dx \\ &\leq \frac{2}{|A|\delta} \int_A \int_{B(x, e^{-t})} \frac{e^C}{\beta} G(t) e^{dt} dx dw \\ &\leq \frac{2}{\delta} \frac{e^C}{\beta} G(t) \end{aligned}$$

Since  $G$  is bounded, this quantity is obviously bounded by a quantity that goes to 0 when  $\delta$  becomes large uniformly with respect to  $t$ . This concludes estimating  $\Pi_1$ . The proof is complete.  $\square$

We are now in position to prove:

**Theorem 17.** For each bounded open set  $A \subset \mathbb{R}^d$ , the martingale  $(M'_t(A))_{t \geq 0}$  converges almost surely towards a positive random variable denoted by  $M'(A)$ , such that  $M'(A) > 0$  almost surely. Consequently, almost surely, the (locally signed) random measures  $(M'_t(dx))_{t \geq 0}$  converge weakly as  $t \rightarrow \infty$  towards a positive random measure  $M'(dx)$ , which has full support and is atomless. Furthermore, the measure  $M'$  is a solution to the  $\star$ -equation (9) with  $\gamma = \sqrt{2d}$ .

*Proof.* We first observe that the martingale  $(Z_t^\beta(A))_{t \geq 0}$  possesses almost surely the same limit as the process  $(\tilde{Z}_t^\beta(A))_{t \geq 0}$  because

$$|Z_t^\beta(A) - \tilde{Z}_t^\beta(A)| = \beta \int_A \mathbb{I}_{\{\tau^\beta > t\}} e^{\sqrt{2d}X_t(x) - d\mathbb{E}[X_t(x)^2]} dx \leq \beta M_t^{\sqrt{2d}}(A) \quad (33)$$

and the last quantity converges almost surely towards 0 since  $M_t^{\sqrt{2d}}(dx)$  almost surely converges towards 0 as  $t$  goes to  $\infty$  (see Proposition 19 below). Furthermore this convergence towards 0 also implies that  $\max_{x \in A} X_t(x) - \sqrt{2d}t \rightarrow -\infty$  in probability as  $t$  goes to infinity (see Proposition 19 again). Therefore, almost surely, we have:

$$\sup_{t \in \mathbb{R}_+} \max_{x \in A} X_t(x) - \sqrt{2d}t < +\infty,$$

which obviously implies

$$\forall t, \quad M'_t(A) = \tilde{Z}_t^\beta(A)$$

for  $\beta$  (random) large enough.

Since the family of random measures  $(Z_t^\beta(dx))_{t \geq 0}$  are positive and  $(Z_t^\beta(A))_{t \geq 0}$  almost surely converges for every bounded open set  $A$ , it is plain to deduce that, almost surely, the family  $(M'_t(dx))_{t \geq 0}$  weakly converges towards a positive random measure.

Let us prove that the support of  $M'$  is  $\mathbb{R}^d$ . We first write the relation, for  $s < t$ ,

$$\begin{aligned} Z_t^\beta(dx) &= (\sqrt{2d}s - X_s(x) + \beta) \mathbb{I}_{\{\tau^\beta > t\}} e^{\sqrt{2d}X_t(x) - d\mathbb{E}[X_t(x)^2]} dx \\ &\quad + (\sqrt{2d}(t-s) - X_t(x) + X_s(x) + \beta) \mathbb{I}_{\{\tau^\beta > t\}} e^{\sqrt{2d}X_t(x) - d\mathbb{E}[X_t(x)^2]} dx. \end{aligned} \quad (34)$$

By using the same arguments as throughout this section, we pass to the limit in this relation as  $t \rightarrow \infty$  and then  $\beta \rightarrow \infty$  to get

$$M'(dx) = e^{\sqrt{2d}X_s(x) - d\mathbb{E}[X_s(x)^2]} M'^{,s}(dx) \quad (35)$$

where  $M'^{,s}$  is defined as

$$M'^{,s}(dx) = \lim_{\beta \rightarrow \infty} \lim_{t \rightarrow \infty} Z_t^{\beta,s}(dx)$$

and  $Z_t^{\beta,s}(dx)$  is almost surely defined as the weak limit of

$$Z_t^{\beta,s}(A) = \int_A (\sqrt{2d}(t-s) - X_t(x) + X_s(x) + \beta) \mathbb{I}_{\{\tau_s^\beta > t\}} e^{\sqrt{2d}(X_t(x) - X_s(x)) - d(\mathbb{E}[X_t(x)^2] - \mathbb{E}[X_s(x)^2])} dx$$

where

$$\tau_s^\beta = \inf\{u > 0; X_{u+s}(x) - X_s(x) - \sqrt{2d}u > \beta\}.$$

Let us stress that we have used the fact that the measure

$$(\sqrt{2d}s - X_s(x) + \beta) \mathbb{1}_{\{\tau^\beta > t\}} e^{\sqrt{2d}X_t(x) - d\mathbb{E}[X_t(x)^2]} dx$$

goes to 0 (it is absolutely continuous w.r.t. to  $M_t^{\sqrt{2d}}(dx)$ ) when passing to the limit in (34). Therefore  $M'$  is a solution to the  $\star$ -equation (9). From (35), it is plain to deduce that the event  $\{M'(A) = 0\}$  ( $A$  open non-empty set) belongs to the asymptotic sigma-algebra generated by the field  $\{(X_t(x))_x; t \geq 0\}$ . Therefore it has probability 0 or 1 by the 0 – 1 law of Kolmogorov. Since we have already proved that it is not 0, this proves that  $\mathbb{P}(M'(A) = 0) = 0$  for any non-empty open set  $A$ .

Finally, we prove that the measure is atomless. The proof is based on the computations made during the proof of Proposition (14). We will explain how to optimize these computations to obtain the atomless property. Of course, we could have done that directly in the proof of Proposition (14) but we feel that it is more pedagogical to separate the arguments. Let us roughly explain how we will proceed. Clearly, it is sufficient to prove that the positive random measure

$$Z^\beta(dx) = \lim_{t \rightarrow \infty} Z_t^\beta(dx).$$

does not possess atoms. To that purpose, by stationarity, it is enough to prove that (see[20, Corollary 9.3 VI])

$$\forall \delta > 0, \quad \lim_n n^d \mathbb{P}(Z^\beta(I_n) > \delta) = 0$$

where  $I_n$  is the cube  $[0, \frac{1}{n}]^d$ . From now on, we stick to the notations of Proposition 14. We have to prove that:

$$\forall \delta > 0, \quad \lim_n \limsup_t \Theta_t^\beta(Z_t^\beta(I_n) > \delta) = 0.$$

Therefore, let  $\delta > 0$  and  $\varepsilon > 0$  be two fixed positive real numbers. We choose  $R$  and the associated event  $B$  of probability  $1 - \varepsilon$  as in Proposition 14. We have:

$$\limsup_t \Theta_t^\beta(Z_t^\beta(I_n) > \delta) \leq \varepsilon + \limsup_t \Pi_1 + \limsup_t \Pi_2.$$

First note that  $\limsup_t \Pi_1 = 0$ ; we also have the following bound for  $\limsup_t \Pi_2$ :

$$\limsup_t \Pi_2 \leq \frac{2V_d e^C}{\delta \beta} \int_{n \ln 2}^\infty G(u) du,$$

which goes to 0 as  $n$  goes to  $\infty$ . In conclusion, we get:

$$\lim_n \limsup_t \Theta_t^\beta(Z_t^\beta(I_n) > \delta) \leq \varepsilon,$$

which is the desired result. □



## A.2 Proof of result from Section 4

Here, we prove Proposition 8. For notational simplicity, we further assume that the dimension  $d$  is equal to 1 and that  $k(u) = 0$  for all  $|u| > 1$ . Generalization to all other situations is straightforward.

Let  $C$  be the interval  $[0, 1]$ . Let us denote by  $\phi(\cdot, \gamma)$  the Laplace transform of  $M^\gamma(C)$

$$\phi(\lambda, \gamma) = \mathbb{E}[e^{-\lambda M^\gamma(C)}].$$

Since  $\mathbb{P}(M^\gamma(C) > 0) = 1$  the range of the mapping  $\lambda \in \mathbb{R}_+ \mapsto \phi(\lambda, \gamma)$  is the whole interval  $]0, 1]$ . Choose a strictly increasing sequence  $(\gamma_n)_n$  converging towards  $\sqrt{2}$ . Choose a sequence  $(\lambda_n)_n$  such that

$$\phi(\lambda_n, \gamma_n) = \frac{1}{2}. \quad (36)$$

Let us denote by  $M^c(C)$  a random variable taking values in  $[0, +\infty]$  such that  $\lambda_n M^{\gamma_n}(C) \rightarrow M^c(C)$  vaguely as  $n \rightarrow \infty$  (eventually up to a subsequence). Let us define the function

$$\varphi(\theta) = \mathbb{E}[e^{-\theta M^c(C)}, M^c(C) < \infty]$$

for  $\theta > 0$  and  $\varphi(0) = 1$ . Then  $\phi(\theta \lambda_n, \gamma_n) \rightarrow \varphi(\theta)$  for all  $\theta$  so that, in particular,  $\varphi(1) = \frac{1}{2}$ . Let us choose  $\varepsilon$  small enough in order to have  $\ln \frac{1}{\varepsilon}$  even integer larger than 4. Because of (9), we have

$$\phi(\theta \lambda_n, \gamma_n) = \mathbb{E}\left[\exp\left[-\theta \lambda_n \int_C e^{\gamma_n X_{\ln \frac{1}{\varepsilon}}(r) - \frac{\gamma_n^2}{2} \mathbb{E}[X_{\ln \frac{1}{\varepsilon}}(r)^2]} M^{\gamma_n, \varepsilon}(dr)\right]\right]$$

Let us denote by  $C_k$  the interval  $[\frac{k}{\ln \frac{1}{\varepsilon}}, \frac{k+1}{\ln \frac{1}{\varepsilon}}]$  for  $k \in A_\varepsilon \stackrel{def}{=} \{0, \dots, \ln \frac{1}{\varepsilon} - 1\}$ . By the Cauchy-Schwartz inequality and stationarity, we have

$$\phi(\theta \lambda_n, \gamma_n) \leq \mathbb{E}\left[\exp\left[-2\theta \lambda_n \sum_{\substack{k \in A_\varepsilon \\ \text{even}}} \int_{C_k} e^{\gamma_n X_{\ln \frac{1}{\varepsilon}}(r) - \frac{\gamma_n^2}{2} \mathbb{E}[X_{\ln \frac{1}{\varepsilon}}(r)^2]} M^{\gamma_n, \varepsilon}(dr)\right]\right]$$

By the Kahane convexity inequality and because the mapping  $x \mapsto e^{-sx}$  is convex for any  $s \in \mathbb{R}$ , we deduce

$$\begin{aligned} \phi(\theta \lambda_n, \gamma_n) &\leq \mathbb{E}\left[\exp\left[-2\theta \lambda_n \sum_{\substack{k \in A_\varepsilon \\ \text{even}}} \int_{C_k} e^{\sqrt{2} X_{\ln \frac{1}{\varepsilon}}(0) - \mathbb{E}[X_{\ln \frac{1}{\varepsilon}}(0)^2]} M^{\gamma_n, \varepsilon}(dr)\right]\right] \\ &= \mathbb{E}\left[\exp\left[-2\theta \lambda_n e^{\sqrt{2} X_{\ln \frac{1}{\varepsilon}}(0) - \mathbb{E}[X_{\ln \frac{1}{\varepsilon}}(0)^2]} \sum_{\substack{k \in A_\varepsilon \\ \text{even}}} M^{\gamma_n, \varepsilon}(C_k)\right]\right]. \end{aligned}$$

Because the sets  $C_k$  are separated by a distance of at least  $\frac{1}{\ln(1/\varepsilon)}$ , the random variables  $(M^{\gamma_n, \varepsilon}(C_k))_{k \in A_\varepsilon}$  are i.i.d. with common law  $\varepsilon M^{\gamma_n}(C)$  because of (9). We deduce:

$$\phi(\theta \lambda_n, \gamma_n) \leq \mathbb{E}\left[\phi\left(2\theta \lambda_n \varepsilon e^{\sqrt{2} X_{\ln \frac{1}{\varepsilon}}(0) - \mathbb{E}[X_{\ln \frac{1}{\varepsilon}}(0)^2]}, \gamma_n\right)^{\frac{1}{2} \ln \frac{1}{\varepsilon}}\right].$$

By taking the limit as  $n \rightarrow \infty$ , we deduce

$$\varphi(\theta) \leq \mathbb{E} \left[ \varphi \left( 2\theta \varepsilon e^{\sqrt{2}X_{\ln \frac{1}{\varepsilon}}(0) - \mathbb{E}[X_{\ln \frac{1}{\varepsilon}}(0)^2]} \right)^{\frac{1}{2} \ln \frac{1}{\varepsilon}} \right].$$

By letting  $\theta$  go to 0, we deduce

$$\varphi(0_+) \leq \varphi(0_+)^{\frac{1}{2} \ln \frac{1}{\varepsilon}}.$$

Because  $\frac{1}{2} \ln \frac{1}{\varepsilon} \geq 2$ , we are left with two options: either  $\varphi(0_+) = 0$  or  $\varphi(0_+) \geq 1$ . But  $\varphi(0_+) \leq 1$  because  $e^{-\theta x} \leq 1$  for all  $x \geq 0$ . Furthermore  $\varphi(0_+) \geq \varphi(1) = \frac{1}{2}$ . Therefore  $\varphi(0_+) = 1$  and  $M^c(C) < +\infty$  almost surely.  $M^c(C)$  is not trivial because  $\varphi(1) = \frac{1}{2}$ . We have proved that the sequence  $(\lambda_n M^{\gamma_n}(C))_n$  is tight and that the limit of every converging subsequence is non trivial.

Of course, we can carry out the same job for every smaller dyadic interval. But the normalizing sequence may depend on the size of the interval. Let us prove that it does not. To this purpose, it is enough to establish that

$$\frac{1}{2} \leq \liminf_n \mathbb{E}[e^{-\lambda_n M^{\gamma_n}(C_k)}] \leq \limsup_n \mathbb{E}[e^{-\lambda_n M^{\gamma_n}(C_k)}] < 1.$$

for every dyadic interval  $C_k$  of size  $2^{-k}$ . The left-hand side is obvious because  $M^{\gamma_n}(C_k) \leq M^{\gamma_n}(C)$ . By using (9) with  $\varepsilon = 2^{-k}$  and the Kahane convexity inequality, we deduce:

$$\begin{aligned} \limsup_n \mathbb{E} \left[ \exp \left[ -\lambda_n M^{\gamma_n}(C_k) \right] \right] &\leq \limsup_n \mathbb{E} \left[ \exp \left[ -\lambda_n M^{\gamma_n}(C) 2^{-k} e^{\sqrt{2}X_{k \ln 2}(0) - \mathbb{E}[X_{k \ln 2}(0)^2]} \right] \right] \\ &= \mathbb{E} \left[ \varphi \left( 2^{-k} e^{\sqrt{2}X_{k \ln 2}(0) - \mathbb{E}[X_{k \ln 2}(0)^2]} \right) \right]. \end{aligned}$$

The last quantity is strictly less than 1. Indeed, if not, then  $\varphi \left( 2^{-k} e^{\sqrt{2}X_{k \ln 2}(0) - \frac{2d}{2} \mathbb{E}[X_{k \ln 2}(0)^2]} \right) = 1$  almost surely, that is  $\varphi(\theta) = 1$  for all  $\theta$ , hence a contradiction.

To sum up, the sequence  $(\lambda_n M^{\gamma_n}(C))_n$  is tight for all dyadic intervals. By the Tychonoff theorem and the Caratheodory extension theorem, we can extract a subsequence and find a random measure  $M^c(dx)$  such that  $(\lambda_n M^{\gamma_n}(C_1), \dots, \lambda_n M^{\gamma_n}(C_p))_n$  converges in law towards  $(M^c(C_1), \dots, M^c(C_p))_n$  for all dyadic intervals  $C_1, \dots, C_p$ . Finally, by multiplying both sides of (9) by  $\lambda_n$  and passing to the limit as  $n \rightarrow \infty$ , we deduce:

$$(M^c(A))_{A \in \mathcal{B}(\mathbb{R})} \stackrel{law}{=} \left( \int_A e^{\sqrt{2}X_{\ln \frac{1}{\varepsilon}}(r) - \mathbb{E}[X_{\ln \frac{1}{\varepsilon}}(r)^2]} M^{c,\varepsilon}(dr) \right)_{A \in \mathcal{B}(\mathbb{R})} \quad (37)$$

where

$$(M^{c,\varepsilon}(A))_{A \in \mathcal{B}(\mathbb{R})} \stackrel{law}{=} \varepsilon \left( M^c \left( \frac{A}{\varepsilon} \right) \right)_{A \in \mathcal{B}(\mathbb{R})}. \quad (38)$$

□

## B. Auxiliary results

We first state the classical ‘‘Kahane’s convexity inequalities’’ (originally written in [45], see also [3] for a proof):

**Lemma 18.** *Let  $F : \mathbb{R}_+ \rightarrow \mathbb{R}$  be some convex function such that*

$$\forall x \in \mathbb{R}_+, \quad |F(x)| \leq M(1 + |x|^\beta),$$

*for some positive constants  $M, \beta$ , and  $\sigma$  be a Radon measure on the Borelian subsets of  $\mathbb{R}^d$ . Given a bounded Borelian set  $A$ , let  $(X_r)_{r \in A}, (Y_r)_{r \in A}$  be two continuous centered Gaussian processes with continuous covariance kernels  $k_X$  and  $k_Y$  such that*

$$\forall u, v \in A, \quad k_X(u, v) \leq k_Y(u, v).$$

*Then*

$$\mathbb{E} \left[ F \left( \int_A e^{X_r - \frac{1}{2} \mathbb{E}[X_r^2]} \sigma(dr) \right) \right] \leq \mathbb{E} \left[ F \left( \int_A e^{Y_r - \frac{1}{2} \mathbb{E}[Y_r^2]} \sigma(dr) \right) \right].$$

*If we further assume*

$$\forall u \in A, \quad k_X(u, u) = k_Y(u, u)$$

*then for each increasing function  $F : \mathbb{R}_+ \rightarrow \mathbb{R}$ :*

$$\mathbb{E} \left[ F \left( \sup_{x \in A} Y_x \right) \right] \leq \mathbb{E} \left[ F \left( \sup_{x \in A} X_x \right) \right].$$

## B.1 Chaos associated to cascades

We use Kahane convexity inequalities (see proposition 18) to compare the small moments of the Gaussian multiplicative chaos with those of a dyadic lognormal Mandelbrot's multiplicative cascade. Let us briefly recall the construction of lognormal Mandelbrot's multiplicative cascades. We consider the  $2^d$ -adic tree

$$T = (\{1, 2\}^d)^{\mathbb{N}}.$$

For  $t \in T$ , we denote by  $\pi_k(t)$  ( $k \in \mathbb{N}$ ) the  $k$ -th component of  $t$ . We equip  $T$  with the ultrametric distance

$$\forall s, t \in T, \quad \mathbf{d}(t, s) = 2^{-2n}, \quad \text{where } n = \sup\{N \in \mathbb{N}; \forall k \leq N, \pi_k(t) = \pi_k(s)\}.$$

Let us define

$$\forall s, t \in T, \quad p_n(t, s) = \begin{cases} u & \text{if } \mathbf{d}(t, s) \leq 2^{-nd} \\ 0 & \text{if } \mathbf{d}(t, s) > 2^{-nd}. \end{cases}$$

The kernel  $p_n$  is therefore constant over each of the  $2^{dn}$  cylinders defined by the prescription of the first  $n$  coordinates (in what follows, we will denote by  $I_n(t)$  that cylinder containing  $t$ ). For each  $n$ , we denote by  $(Y_n(t))_{t \in T}$  a centered Gaussian process indexed by  $T$  with covariance kernel  $p_n$ . We assume that the processes  $(Y_n)_n$  are independent. We set

$$\forall s, t \in T, \quad q_n(t, s) = \sum_{k=1}^n p_k(t, s) \tag{39}$$

Notice that

$$\forall s, t \in T, \quad q_n(t, s) = \frac{u}{2 \ln 2} \ln \frac{1}{\mathbf{d}(t, s) \vee 2^{-dn}}$$

and

$$q_n(t, s) \rightarrow \frac{u}{2 \ln 2} \ln \frac{1}{\mathbf{d}(t, s)} \quad \text{as } n \rightarrow \infty.$$

We define the centered Gaussian process

$$\forall t \in T, \bar{X}_n(t) = \sum_{k=1}^n Y_k(t)$$

with covariance kernel  $q_n$ . Let us denote by  $\sigma$  the uniform measure on  $T$ , ie  $\sigma(I_n(t)) = 2^{-dn}$ . We set

$$\bar{M}_n^u = \int_T e^{\bar{X}_n(t) - \frac{1}{2} \mathbb{E}[\bar{X}_n(t)^2]} \sigma(dt).$$

This corresponds to the lognormal multiplicative cascades framework. The martingale  $(\bar{M}_n^u)_n$  converges towards a non trivial limit iff  $u < 4 \ln 2$ . The boundary case corresponds to  $u = 4 \ln 2$ . It is proved in [46] that, for  $u = 4 \ln 2$ ,  $\lim_n \bar{M}_n^u(dx) = 0$  almost surely.

It turns out that the  $2^d$ -adic tree can be naturally embedded in the unit cube of  $\mathbb{R}^d$  by iteratively dividing a cube into  $2^d$  cubes with equal size length. So we set  $K_0 = [0, 1]^d$  and for each  $n \geq 1$  and  $x \in [0, 1]^d$ , we let  $K_n(x)$  stand for the cube of  $n$ -th generation containing  $x$ . Notice that the uniform measure on the tree is then sent to the Lebesgue measure by this embedding. We also stress that the dyadic distance on the cube  $[0, 1]^d$  is greater than the Euclidian distance on that cube:

$$\forall s, t \in [0, 1]^d, \quad |t - s| \leq 2 \mathbf{d}(t, s)^{\frac{1}{d}}.$$

This allows many one-sided comparison results between lognormal cascades and Gaussian multiplicative chaos.

So, taking  $u = 4 \ln 2$  in the kernel  $q_n$  of (39), we claim for all  $s', s \in [0, 1]^d$ ,  $\forall n \in \mathbb{N}$ :

$$q_n(s, s') - C \leq 2d K_{n \ln 2}(s - s') \quad (40)$$

for some constant  $C > 0$  that does not depend on  $n$  (only on  $k$ ).

We are now in position to prove

**Proposition 19.** *For  $\gamma^2 = 2d$ , the standard construction yields a vanishing limiting measure:*

$$\lim_{\varepsilon \rightarrow 0} M^{\sqrt{2d}} = 0 \quad \text{almost surely.} \quad (41)$$

Furthermore, for any bounded open set  $A$ ,

$$\sup_{x \in A} X_t(x) - \sqrt{2dt} \rightarrow -\infty \quad \text{as } t \rightarrow \infty. \quad (42)$$

*Proof.* The family  $(M_t^\gamma)$  is a positive martingale. Therefore it converges almost surely. We just have to prove that the limit is zero.

From Kahane's concentration inequalities (Lemma 18), we deduce that for all increasing bounded concave function  $F$  and for all  $n \in \mathbb{N}$  (we stick to the notations introduced just above):

$$\mathbb{E}[F(ZM_{n \ln 2}^{\sqrt{2d}}([0, 1]^d))] \leq \mathbb{E}[F(\int_T e^{\bar{X}_n(t) - \frac{1}{2} \mathbb{E}[\bar{X}_n(t)^2]} dt)] \quad (43)$$

where  $Z \sim e^{\mathcal{N}(-C/2, C)}$ . Since the right-hand side goes to  $F(0)$  as  $n \rightarrow \infty$ , so does the left-hand side. This shows that  $M_n^{\sqrt{2d}}([0, 1]^d)$  goes to 0 in probability as  $n \rightarrow \infty$ . Since we already know that the martingale  $(M_t^{\sqrt{2d}}([0, 1]^d))_t$  converges almost surely, this completes the proof of the first statement.

Let us focus on the second statement. Observe that in the case of the  $2^d$ -adic tree the convergence of the martingale  $(\overline{M}_n^{2d})_n$  towards 0 implies that

$$\max_{t \in T} \overline{X}_n - dn \rightarrow -\infty \quad \text{as } n \rightarrow \infty$$

since obviously

$$2^{-dn} e^{\max_{t \in T} \overline{X}_n - 2dn \ln 2} \leq \overline{M}_n^{2d}.$$

By using the second statement of Lemma 18 and by arguing as above we complete the proof of Proposition 19.  $\square$

## Acknowledgements

The authors wish to thank J. Barral, J.P. Bouchaud, K. Gawędzki, I. R. Klebanov, I. K. Kostov and O. Zindy for fruitful discussions and comments that have led to the final version of this manuscript.

## References

- [1] Aïdékon E., Shi Z.: The Seneta-Heyde scaling for the branching random walk, arXiv:1102.0217v2.
- [2] Aïdékon E.: Convergence in law of the minimum of a branching random walk, arXiv:1101.1810v3.
- [3] Allez R., Rhodes R., Vargas V.: Lognormal  $\star$ -scale invariant random measures, *Probability Theory and Related Fields*, arXiv:1102.1895v1.
- [4] Alvarez-Gaumé L., Barbón, J. L. F., and Crnković Č.: A proposal for strings at  $D > 1$ , *Nucl. Phys.* **B394**, 383 (1993).
- [5] Ambjørn J., Durhuus B., and Jonsson T.: A solvable 2d gravity model with  $\gamma > 0$ , *Mod. Phys. Lett. A* 9, 1221 (1994).
- [6] Arguin L-P., Zindy O.: Poisson-Dirichlet statistics for the extremes of a log-correlated Gaussian field, arXiv:1203.4216v1.
- [7] Barral, J., Mandelbrot, B.B.: Multifractal products of cylindrical pulses, *Probab. Theory Relat. Fields* **124** (2002), 409-430.
- [8] Barral J.: Moments, continuit , et analyse multifractale des martingales de Mandelbrot, *Probab. Theory Relat. Fields*, **113** (1999), 535–569.
- [9] Barral J., Rhodes R., Vargas V.: Limiting laws of supercritical branching random walks, arXiv:1203.5445v2.

- [10] Barral J., Jin X., Rhodes R., Vargas V.: Gaussian multiplicative chaos and KPZ duality, arXiv:1202.5296v2.
- [11] Bacry E., Muzy J.F.: Log-infinitely divisible multifractal processes, *Comm. Math. Phys.*, **236** (2003) no.3, 449-475.
- [12] Benjamini, I., Schramm, O.: KPZ in one dimensional random geometry of multiplicative cascades, *Communications in Mathematical Physics*, vol. 289, no 2, 653-662, 2009.
- [13] Bernardi O., Bousquet-Mélou M.: Counting colored planar maps: algebraicity results, arXiv:0909.1695.
- [14] Biggins, J.D. and Kyprianou, A.E.: Measure change in multitype branching, *Adv. Appl. Probab.* **36** (2004), 544-581.
- [15] Biggins, J.D. and Kyprianou, A.E.: Fixed points of the smoothing transform; the boundary case, *Electronic Journal of Probability*, vol. 10 (2005).
- [16] Bouchaud J.P., Fyodorov Y.: Freezing and extreme-value statistics in a random energy model with logarithmically correlated potential, *J. Phys. A* **41** (2008) 372001.
- [17] Bramson M., Zeitouni O.: Tightness of the recentered maximum of the two-dimensional discrete Gaussian Free Field, arXiv:1009.3443v1.
- [18] Brézin E., Kazakov V.A. , Zamolodchikov Al.B.: Scaling violation in a field theory of closed strings in one physical dimension, *Nuclear Physics* **B338**, 673-688 (1990).
- [19] Carpentier D., Le Doussal P.: Glass transition of a particle in a random potential, front selection in nonlinear RG and entropic phenomena in Liouville and Sinh-Gordon models, *Phys. Rev. E* **63**:026110 (2001).
- [20] Daley D.J., Vere-Jones D., An introduction to the theory of point processes volume 2, *Probability and its applications*, Springer, 2nd edition, 2007.
- [21] Das S. R., Dhar A., Sengupta A. M., and Wadia S. R.: New critical behavior in  $d = 0$  large- $N$  matrix models, *Mod. Phys. Lett. A* **5**, 1041 (1990).
- [22] Daul J.-M.:  $q$ -state Potts model on a random planar lattice, arXiv:hep-th/9502014.
- [23] David F.: Conformal Field Theories Coupled to 2-D Gravity in the Conformal Gauge, *Mod. Phys. Lett. A* **3** 1651-1656 (1988).
- [24] Di Francesco P., Ginsparg P., Zinn-Justin J.: 2D gravity and random matrices, *Physics Reports* **254**, p. 1-133 (1995).
- [25] Ding J., Zeitouni O.: Extreme values for two-dimensional discrete Gaussian free field, arXiv:1206.0346v1.
- [26] Distler J., Kawai H.: Conformal Field Theory and 2-D Quantum Gravity or Who's Afraid of Joseph Liouville?, *Nucl. Phys.* **B321** 509-517 (1989).

- [27] Duplantier B.: Conformal fractal geometry and boundary quantum gravity, in *Fractal geometry and applications: a jubilee of Benoît Mandelbrot*, Part 2 (Amer. Math. Soc., Providence, RI, 2004), vol. 72 of *Proc. Sympos. Pure Math.*, pp. 365–482, arXiv:math-ph/0303034.
- [28] Duplantier B.: A rigorous perspective on Liouville quantum gravity and KPZ, in *Exact Methods in Low-dimensional Statistical Physics and Quantum Computing*, J. Jacobsen, S. Ouvry, V. Pasquier, D. Serban, and L.F. Cugliandolo, eds., Lecture Notes of the Les Houches Summer School: Volume 89, July 2008, Oxford University Press (Clarendon, Oxford) (2010).
- [29] Duplantier, B., Sheffield, S.: Duality and KPZ in Liouville Quantum Gravity, *Physical Review Letters* **102**, 150603 (2009).
- [30] Duplantier, B., Sheffield, S.: Liouville Quantum Gravity and KPZ, *Inventiones Mathematicae* **185** (2) (2011) 333-393.
- [31] Duplantier, B., Sheffield, S.: Schramm-Loewner Evolution and Liouville Quantum Gravity, *Physical Review Letters* **107**, 131305 (2011).
- [32] Durhuus B.: Multi-spin systems on a randomly triangulated surface, *Nucl. Phys.* **B426**, 203 (1994).
- [33] Durrett R., Liggett T.M.: Fixed points of the smoothing transformation, *Probability Theory and Related Fields* **64** (3) (1983) 275-301.
- [34] Eynard B., and Bonnet G.: The Potts- $q$  random matrix model: loop equations, critical exponents, and rational case, *Phys. Lett.* **B463**, 273-279 (1999).
- [35] Falconer K.J.: The geometry of fractal sets, Cambridge University Press, 1985.
- [36] Fan A.H.: Sur le chaos de Lévy d'indice  $0 < \alpha < 1$ , *Ann. Sciences Math. Québec*, vol 21 no. 1, 1997, p. 53-66.
- [37] Fyodorov Y, Le Doussal P., Rosso A.: Statistical Mechanics of Logarithmic REM: Duality, Freezing and Extreme Value Statistics of  $1/f$  Noises generated by Gaussian Free Fields, *J. Stat. Mech.* (2009) P10005.
- [38] Ginsparg P. and Moore G.: Lectures on 2D gravity and 2D string theory, in *Recent direction in particle theory*, Proceedings of the 1992 TASI, edited by J. Harvey and J. Polchinski (World Scientific, Singapore, 1993).
- [39] Ginsparg P., Zinn-Justin J.: 2D gravity + 1D matter, *Physics Letters* **B240**, 333-340 (1990).
- [40] Gross, D.J. and Klebanov I.R.: One-dimensional string theory on a circle, *Nuclear Physics* **B344** (1990) 475–498.
- [41] Gross D.J., Miljković N.: A nonperturbative solution of  $D = 1$  string theory, *Physics Letters* **B238**, 217-223 (1990).

- [42] Gubser S.S., Klebanov I.R.: A modified  $c = 1$  matrix model with new critical behavior, *Physics Letters* **B340** (1994) 35–42.
- [43] Hu Y., Shi Z.: Minimal position and critical martingale convergence in branching random walks, and directed polymers on disordered trees, *Annals of Probability*, **37** (2) (2009) 742-789.
- [44] Jain S. and Mathur S. D.: World-sheet geometry and baby universes in 2-D quantum gravity, *Phys. Lett.* **B 286**, 239 (1992).
- [45] Kahane J.-P.: Sur le chaos multiplicatif, *Ann. Sci. Math. Québec*, **9** no.2 (1985), 105-150.
- [46] Kahane J.-P., Peyrière J.: Sur certaines martingales de B. Mandelbrot, *Adv. Math.*, **22** (1976), 131-145.
- [47] Kazakov V., Kostov I., and Kutasov D.: A Matrix Model for the 2d Black Hole, in *Nonperturbative Quantum Effects 2000*, JHEP Proceedings.
- [48] Klebanov I.R.: Touching random surfaces and Liouville gravity, *Phys. Rev. D* **51**, 18361841 (1995).
- [49] Klebanov I.R., Hashimoto A.: Non-perturbative Solution of Matrix Models Modified by Trace-squared Terms, *Nucl. Phys.* **B434** (1995) 264-282.
- [50] Klebanov I.R., Hashimoto A.: Wormholes, Matrix Models, and Liouville Gravity, *Nucl. Phys. (Proc. Suppl.)* **45B,C** (1996) 135-148.
- [51] Knizhnik V.G., Polyakov A.M., Zamolodchikov A.B.: Fractal structure of 2D-quantum gravity, *Modern Phys. Lett A* **3**(8) (1988), 819-826.
- [52] Korchemsky G. P.: Matrix models perturbed by higher order curvature terms, *Mod. Phys. Lett. A* **7**, 3081 (1992).
- [53] Kostov I.K.: Loop amplitudes for nonrational string theories, *Phys. Lett.* **B266**, 317-324 (1991).
- [54] Kostov I.K.: Strings with discrete target space, *Nucl. Phys.* **B376**, 539-598 (1992).
- [55] Kostov I.K.: Boundary Loop Models and and 2D Quantum Gravity, in *Exact Methods in Low-dimensional Statistical Physics and Quantum Computing*, J. Jacobsen, S. Ouvry, V. Pasquier, D. Serban, and L.F. Cugliandolo, eds., Lecture Notes of the Les Houches Summer School: Volume 89, July 2008, Oxford University Press (Clarendon, Oxford) (2010).
- [56] Kostov I.K., Staudacher M.: Multicritical phases of the  $O(n)$  model on a random lattice, *Nucl. Phys.* **B384**, 459-483 (1992).
- [57] Kyprianou, A.E.: Slow variation and uniqueness of solutions to the functional equation in the branching random walk. *J. Appl. Probab.* **35** (1998) 795802.



- [58] Liu Q.S., Fixed points of a generalized smoothing transformation and applications to the branching random walk, *Adv. Appl. Probab.* **30** (1998) 85-112.
- [59] Madaule T.: Convergence in law for the branching random walk seen from its tip, arXiv:1107.2543v2.
- [60] Motoo M.: Proof of the iterated logarithm through diffusion equation, *Ann. Inst. Statist. Math.*, **10** (1959) 21-28.
- [61] Nakayama Y.: Liouville Field Theory – A decade after the revolution, *Int. J. Mod. Phys.* **A19**, 2771 (2004).
- [62] Neveu, J.: Multiplicative martingales for spatial branching processes. In Seminar on Stochastic Processes, 1987, (eds: E. Cinlar, K.L. Chung, R.K. Gettoor). Progress in Probability and Statistics, 15, 223-241. Birkhauser, Boston (1988).
- [63] Parisi G.: On the one dimensional discretized string, *Physics Letters* **B238**, 209-212 (1990).
- [64] Polchinski J., Critical behavior of random surfaces in one dimension, *Nuclear Physics* **B346** (1990) 253–263.
- [65] Polyakov, A. M.: Quantum geometry of bosonic strings, *Physics Letters* **B 103** 207-210 (1981).
- [66] Rhodes R., Sohier J., and Vargas V.:  $\star$ -scale invariant random measures, arXiv:1201.5219v1.
- [67] Rhodes R., Vargas, V.: Multidimensional multifractal random measures, *Electronic Journal of Probability*, **15** (2010) 241-258.
- [68] Rhodes, R. Vargas, V.: KPZ formula for log-infinitely divisible multifractal random measures, *ESAIM Probability and Statistics*, **15** (2011) 358-371.
- [69] Robert, R., Vargas, V.: Gaussian multiplicative chaos revisited, *Annals of Probability*, **38** 2 (2010) 605-631.
- [70] Sheffield S.: Gaussian free fields for mathematicians, *Probab. Th. Rel. Fields*, **139** (2007) 521–541.
- [71] Sheffield S.: Conformal weldings of random surfaces: SLE and the quantum gravity zipper, arXiv:1012.4797.
- [72] Sugino F., Tsuchiya O.: Critical behavior in  $c = 1$  matrix model with branching interactions, *Mod. Phys. Lett.* **A9** (1994) 3149-3162.
- [73] Tecu N.: Random conformal welding at criticality, arXiv:1205.3189v1.