



HAL
open science

Characterization of specificity of bacterial community structure within the burrow environment of the marine polychaete *Hediste (Nereis) diversicolor*

Laura Pischedda, Cécile Militon, Franck Gilbert, Philippe Cuny

► **To cite this version:**

Laura Pischedda, Cécile Militon, Franck Gilbert, Philippe Cuny. Characterization of specificity of bacterial community structure within the burrow environment of the marine polychaete *Hediste (Nereis) diversicolor*. *Research in Microbiology*, 2011, 162, pp.1033-1042. 10.1016/j.resmic.2011.07.008 . hal-00704691

HAL Id: hal-00704691

<https://hal.science/hal-00704691v1>

Submitted on 21 May 2013

HAL is a multi-disciplinary open access archive for the deposit and dissemination of scientific research documents, whether they are published or not. The documents may come from teaching and research institutions in France or abroad, or from public or private research centers.

L'archive ouverte pluridisciplinaire **HAL**, est destinée au dépôt et à la diffusion de documents scientifiques de niveau recherche, publiés ou non, émanant des établissements d'enseignement et de recherche français ou étrangers, des laboratoires publics ou privés.



Open Archive Toulouse Archive Ouverte (OATAO)

OATAO is an open access repository that collects the work of Toulouse researchers and makes it freely available over the web where possible.

This is an author-deposited version published in: <http://oatao.univ-toulouse.fr/>
Eprints ID: 6079

To link to this article: DOI: 10.1016/j.resmic.2011.07.008
URL: <http://dx.doi.org/10.1016/j.resmic.2011.07.008>

To cite this version: Pishedda, Laura and Militon, Cécile and Gilbert, Franck and Cuny, Philippe *Characterization of specificity of bacterial community structure within the burrow environment of the marine polychaete Hediste (Nereis) diversicolor*. (2011) Research in Microbiology, vol. 162 (n°10). pp. 1033-1042. ISSN 0923-2508

Any correspondence concerning this service should be sent to the repository administrator: staff-oatao@listes.diff.inp-toulouse.fr

Characterization of specificity of bacterial community structure within the burrow environment of the marine polychaete *Hediste (Nereis) diversicolor*

Laura Pischedda^a, Cécile Milton^a, Franck Gilbert^{b,c}, Philippe Cuny^{a,*}

^a Laboratoire de Microbiologie, Géochimie et Ecologie Marines (UMR CNRS 6117), Centre d'Océanologie de Marseille, Université de la Méditerranée, Campus de Luminy, Case 901, Marseille Cedex 9 13288, France

^b Université de Toulouse, UPS, INP, EcoLab (Laboratoire d'Ecologie fonctionnelle), 29 rue Jeanne Marvig, F-31055 Toulouse, France

^c CNRS, EcoLab, F-31055 Toulouse, France

Abstract

Bioturbation is known to stimulate microbial communities, especially in macrofaunal burrows where the abundance and activities of bacteria are increased. Until now, these microbial communities have been poorly characterized and an important ecological question remains: do burrow walls harbor similar or specific communities compared with anoxic and surface sediments? The bacterial community structure of coastal sediments inhabited by the polychaete worm *Hediste diversicolor* was investigated. Surface, burrow wall and anoxic sediments were collected at the Carteau beach (Gulf of Fos, Mediterranean Sea). Bacterial diversity was determined by analyzing small subunit ribosomal RNA (16S rRNA) sequences from three clone libraries (168, 179 and 129 sequences for the surface, burrow wall and anoxic sediments, respectively). Libraries revealed 306 different operational taxonomic units (OTUs) belonging to at least 15 bacterial phyla. Bioinformatic analyses and comparisons between the three clone libraries showed that the burrow walls harbored a specific bacterial community structure which differed from the surface and anoxic environments. More similarities were nevertheless found with the surface assemblage. Inside the burrow walls, the bacterial community was characterized by high biodiversity, which probably results from the biogeochemical heterogeneity of the burrow system.

Keywords: *Hediste diversicolor* burrow; Bacterial communities; Biodiversity; Bioturbation; Sediments

1. Introduction

It is well recognized that macrofaunal bioturbation reshapes the physical, chemical and biological properties of aquatic sediments, inducing, in most cases, higher rates of organic matter mineralization (e.g. Kristensen, 1985; Aller, 1994; Sun et al., 1999; Reise, 2002; Gilbert et al., 2003). Within sediments, a wide range of activities such as mucus-lined tube construction, periodic water flushing, maintenance of the structure, feeding activities (e.g. filter-feeding, grazing and gardening) and excretion of feces and liquid metabolites, modify solute and particle distribution (e.g. Kristensen, 1984; Aller and Yingst, 1985; Riisgård and Banta, 1998; Webb and

Eyre, 2004; Meysman et al., 2005; Costa et al., 2006). Through these different behaviors, macrofauna can modify environmental variables. Indeed, the mucus layer that stabilizes the burrow wall provides labile organic matter and enables trapping of more or less fresh particles, enhancing the organic matter content in the burrow system (Defretin, 1971; Kristensen, 1985; Aller and Aller, 1986; Papaspyrou et al., 2005). The mucus layer may also act as a barrier to solute diffusion that establishes steep chemical gradients between anoxic sediment and burrow lumen (Aller and Yingst, 1978; Boudreau and Marinelli, 1994). The production of biogenic structures, enhancing the size of the sediment–water interface, and periodical water flushing, greatly increase solute exchanges between overlying water and anoxic sediments, e.g. oxygen renewal and toxic metabolite removal (Davey, 1994; Kristensen, 1984; Forster and Graf, 1992, 1995; Fenchel,

* Corresponding author.

E-mail address: philippe.cuny@univmed.fr (P. Cuny).

1996; Aller, 2001; Pischedda et al., 2008; Bertics and Ziebis, 2010). The periodic character of ventilation and steep gradients also induce pH and redox oscillations in the structure, at frequencies depending on the macrofaunal organisms (Aller, 1988; Kristensen, 2000). One major consequence of macrofaunal bioturbation is thus establishment of a highly heterogeneous system associated with dynamic and constantly changing biogeochemical variables of large amplitude, on both small spatial (mm, cm) and short temporal (s, min) scales (Glud et al., 1998; Aller, 2001; Wenzhöfer et al., 2001; Polerecky et al., 2006; Glud, 2008; Pischedda et al., 2008).

Microorganisms are essential for ecosystem functioning as they are the primary recyclers of nutrients through mineralization of organic matter (Whitman et al., 1998). In most benthic environments, they are profoundly affected by macrofaunal bioturbation and induced sediment heterogeneity. Indeed, bioturbation has been shown to increase total microbial abundance and viable microbial biomass (e.g. Aller and Yingst, 1978; Alongi, 1985; Steward et al., 1996). Furthermore, it may also stimulate the activity of microbes (e.g. Kristensen et al., 1985, 1991; Phillips and Lovell, 1999) and lead to establishment of specific microbial communities associated with burrows of macroorganisms (e.g. Marinelli et al., 2002; Matsui et al., 2004). However, only a few studies have compared the bacterial community structure of the burrow wall with surface and/or surrounding sediments. They were based on phospholipid fatty acid (PLFA) (Dobbs and Guckert, 1988; Steward et al., 1996; Marinelli et al., 2002) or terminal restriction fragment length polymorphism (T-RFLP) (Laverock et al., 2010) analyses, nucleic acid analyses such as 5S rRNA (Lucas et al., 2003) and 16S rRNA gene fingerprinting or cloning (Matsui et al., 2004; Papaspyrou et al., 2005, 2006; Laverock et al., 2010). Those studies pointed out that the crustacean or annelid burrow walls presented specific microbial communities. As suggested by Papaspyrou et al. (2006), burrow walls should not be considered simply as an extension of the sediment–water interface, as they are usually characterized by unique physical and chemical properties and microbial communities (Kristensen, 1985; Aller and Aller, 1986; Fenchel, 1996; Papaspyrou et al., 2005). However, except in studies using T-RFLP or fingerprinting techniques, previous works only focused on particular microbial groups such as sulfate-reducing bacteria and ammonia- and nitrite-oxidizing bacteria (Matsui et al., 2004; Satoh et al., 2007). Thus, overall communities have not been thus far extensively characterized so as to compare these microenvironments.

The purpose of the present work was to gain knowledge forming a baseline for future research on the burrow wall bacterial community structure of the representative gallery-building species *Hediste diversicolor* (O.F. Müller, 1776). The main objective was to confirm the possible existence of a specific community associated with burrow walls. In situ sediments inhabited by communities of this polychaete worm were sampled in the Gulf of Fos in order to compare the bacterial structure of surface, burrow wall and anoxic sediments. For that, three clone libraries consisting of 476 rRNA

sequences in total were constructed and analyzed using bioinformatic tools.

2. Material and methods

2.1. Study site and sampling

Sampling was performed in May 2008 at low tide (0–1 m water depth) in the Saint Antoine canal mouth of the Carteau cove (43°22'30" N, 4°50'20" E; Gulf of Fos, Mediterranean Sea). This area exhibits muddy-sand sediments and provides a habitat for a dense community of *H. diversicolor*. This polychaete builds a semi-permanent U- or Y-shaped mucus-lined burrow extending 6–12 cm into sediments. It actively renews burrow water by peristaltic or undulatory body movements with successions of active ventilation periods followed by rest periods (Kristensen, 1981; Davey, 1994). *H. diversicolor* is active for about 50% of the time with 4.8 min ventilation periods followed by 4.6 min of inactivity at 15 °C and at a salinity of 18‰ (Miron and Kristensen, 1993). Temporal patterns of bioirrigation vary according to several factors, including feeding activity (Kristensen, 2001), sulfide concentration inside burrows (Miron and Kristensen, 1993), temperature and salinity of seawater (Kristensen, 1983).

Because of heterogeneity of the sediment matrices (including burrow wall) and because only weak amounts of sediments from the burrow walls can be sampled (thickness of about 2 mm), sediment subsamples were pooled together. More specifically, from five sediment squares (30 × 30 cm; shovel sampling), fifty subsamples (~3 ml) of sediment from surface (*S*), burrow wall (*BW*) and anoxic (*An*) compartments were randomly sampled. The surface sediments were sampled by gently scraping a 2 mm layer of sediments on top of the square with an ethanol-clean stainless steel microspatula. For sampling of the burrow wall (*BW*) and anoxic (*An*) sediments, sediment squares were gently broken and sampling of light brown oxidized burrow walls (2 mm layer) and dark brown reduced sediments was randomly performed between a 0 and 15 cm depth. After collection, subsamples of each compartment (*S*, *BW* and *An*) were pooled per habitat in order to obtain a global mean picture of each habitat community. Pooled samples were then immediately frozen on dry ice and stored at –80 °C until analyses.

2.2. Sediment analyses

The sediment grain size distribution was determined using a Malvern Mastersizer S long bed Ver. 2.18 FR, after 30 s of sonication. Sediment porosity was calculated from water loss after drying of sediment at 60 °C overnight. The organic matter content was measured as loss upon ignition (475 °C, 4 h; Schumacher, 2002).

2.3. DNA recovery and amplification

Total genomic DNA extraction was performed from 250 to 300 mg of homogenized sampled sediments using the

PowerSoil™ DNA isolation kit (MoBio Laboratories, Inc., USA) according to the manufacturer's recommendations. Samples were stored at -20°C for less than 1 month before use.

Total genomic DNA of *S*, *BW* and *An* sediment samples were used as templates for the 16S rRNA gene amplification. A combination of reverse primer 907 RA (5'-CCGT CAATTCMTTTRAGTTT-3', Thermo Scientific) and forward primer Eu5 Bac (5'-AGAGTTTGATNMTGGCTCAGA-3', Thermo Hybaid) was used. The reaction mixture contained 10–15 ng of DNA quantified beforehand by spectrofluorimetry (BioPhotometer, Eppendorf), $1\times$ PCR buffer (10 \times reaction buffer spiked with Mg^{2+} : 500 mM KCl, 100 mM Tris-HCl pH 8.3 at 25°C , 15 mM Mg^{2+}), 10 μM each of the forward and reverse primers, 10 mM of dNTP (Eppendorf) and 2.5U of Taq DNA polymerase (Eppendorf). The initial denaturing step of 3 min at 94°C was followed by 30 cycles of 1 min at 94°C , 45 s at 55°C , and 1 min at 72°C with a final extension step of 5 min at 72°C . Successful amplification and size of PCR products (900 bp) was checked by electrophoresis in 1.0% agarose in $1\times$ Tris-Borate-EDTA buffer. PCR was done in triplicate for each sample.

2.4. Cloning and sequencing

Bands of expected sizes were excised and purified using the Wizard® SV Gel and PCR Clean-Up System (Promega) in accordance with the manufacturer's instructions, and the triplicates were pooled. A quantity of 40–50 ng of DNA fragments (quantified beforehand by spectrofluorimetry, BioPhotometer, Eppendorf) were then cloned using pGEM-T-easy vector (Promega) and transformed using thermocompetent JM109 cells (Promega) according to the manufacturer's recommendations.

For each of the surface, burrow wall and anoxic sediment samples, 192 recombinant clones randomly selected were sent out for Sanger sequencing with a M13 forward primer (GATC Biotech, Konstanz, Germany, <http://www.gatc-biotech.fr/fr/index.php>).

2.5. Clone library characterization, analyses and comparison

Sequence treatment was performed with the pregap4 tool of the Staden Package Program (Staden, 1996; <http://staden.sourceforge.net/>) and sequence orientation was checked with the Orientation Checker tool (Ashelford et al., 2006; <http://www.bioinformaticstoolkit.org/Squirrel/index.html>). Sequences were then aligned with Clustal X (Thompson et al., 1997; <ftp://ftp.ebi.ac.uk/pub/software/clustalw2>) and checked for chimeric PCR artifacts using Mallard software (Ashelford et al., 2006; <http://www.bioinformatics-toolkit.org/Mallard/index.html>). Potential chimeric sequences were removed from the clone libraries. After these previous treatments, the number of sequences subjected to phylogenetic analyses was 168, 179 and 129 for the *S*, *BW* and *An* clone libraries, respectively. All sequences have been deposited in the

Genbank database under accession numbers FJ753072 to FJ753240, FJ752762 to FJ752941 and FJ752942 to FJ753071 for the *S*, *BW* and *An* clone libraries, respectively.

Sequences were compared with those deposited in the GenBank database using BLASTN software (<http://blast.ncbi.nlm.nih.gov/Blast.cgi>). A phylogenetic tree was constructed for the burrow wall community with the Mega 4.1 Beta program (Tamura et al., 2007; <http://www.megasoftware.net/index.html>) using the neighbor-joining algorithm; 1000 bootstrap resamplings were performed to estimate the reproducibility of the tree.

Operational taxonomic unit (OTU) assignments for *S*, *BW* and *An* clone libraries were performed using the furthest neighbor clustering algorithm of the DOTUR program (Schloss and Handelsman, 2005; <http://schloss.micro.umass.edu/software/dotur.html>). This program involved preliminary production of a distance matrix which was done on the Greengenes website after alignment of sequences with the NAST tool (DeSantis et al., 2006; <http://greengenes.lbl.gov/cgi-bin/nph-index.cgi>). A 3% distance level between sequences was considered the cutoff to consider distinct OTUs. Based on these OTU assignments, the validity of sampled clones for species diversity in natural samples was evaluated by coverage value (C , in %) according to the following equation (Good, 1953): $C = (1 - n_1/N) \times 100$, where n_1 is the number of OTUs appearing only once in the library and N is the total number of OTUs. Rarefaction analysis and diversity indices for *S*, *BW* and *An* clone libraries were also performed with DOTUR based on OTU assignments (3% distance level). The observed richness in OTUs (R , rarefied for 129 sequences and measured from rarefaction curves), the Bootstrap richness estimator, Chao1 richness, ACE richness, the Jackknife estimator as well as Shannon-Weaver (H') and Simpson ($1 - D$) indices of diversity were calculated for the three clone libraries. Moreover, OTU evenness was calculated with the Pielou indices $J' = H'/\ln(R)$ and Simpson evenness $D' = (1 - D)/(1 - (1/R))$. Mean pairwise divergence (π), i.e., the mean number of base pairs (bp) that differ between two randomly chosen sequences, was calculated with JM109 ARLEQUIN software (Excoffier et al., 2005; <http://lgb.unige.ch/arlequin/>) for each library (intra-library) and for the three pooled libraries together (inter-libraries). Software SONS version 1.0 (Schloss and Handelsman, 2006; <http://schloss.micro.umass.edu/software/sons.html>) was used to evaluate the percentage of shared OTUs between libraries.

To determine similarities between clone libraries, pairwise comparisons between non-dereplicated sequences (i.e. the possibility of finding a sequence several times was left in) of clone libraries were performed using β -LIBSHUFF, following the instructions of the authors (Schloss et al., 2004; <http://www.plantpath.wisc.edu/joh/s-libshuff.html>). P -values were corrected according to the Bonferroni correction (Sokal and Rohlf, 1995): $B = 1 - (1 - \alpha)^{1/N}$, where α is the significance level and N , the number of comparisons. In our case, $B = 0.00167$ with $\alpha = 0.01$ and $N = 6$. To determine differences between clone libraries, cluster analysis was performed

with the program Unifrac (Lozupone et al., 2006; <http://bmf2.colorado.edu/unifrac/index.psp>). Jackknife analysis was carried out to test the robustness of the cluster.

3. Results

3.1. Sediment characteristics

Sediment characteristics were quantified for the surface, burrow wall and anoxic sediment samples (Table 1). The three compartments did not exhibit similar grain size distribution. Indeed, the surface sediment was primarily composed of sands ($57.8 \pm 11.3\%$; $n = 4$) as described with the Wentworth scale, whereas burrow wall and anoxic sediments were mainly formed by silts ($51.0 \pm 4.6\%$ and $53.8 \pm 9.8\%$ for *BW* and *An* respectively; $n = 4$). Surface and burrow wall sediments exhibited the same porosity values (0.53 ± 0.05 and 0.53 ± 0.03 , respectively; $n = 4$ for each). The anoxic sediment presented lower porosity (0.45 ± 0.02 ; $n = 4$). The organic matter content ranged from $1.59 \pm 0.39\%$ ($n = 4$) for surface sediments to $2.71 \pm 0.34\%$ ($n = 4$) for the burrow wall with an intermediate value of $2.03 \pm 0.67\%$ ($n = 4$) for the anoxic compartment.

3.2. Differences between surface (S), burrow wall (BW) and anoxic bacterial communities (An)

A total of 476 clones were retrieved in the three clone libraries: 168, 179 and 129 clones for the surface, burrow wall and anoxic sediment samples, respectively. It is important to remember that because of PCR and cloning biases (possibly differential ligation efficiencies of the different amplicons) (Van Elsas and Boersma, 2011), the clone library approach used in this study cannot give a truly exact or exhaustive picture of the bacterial communities of the different environments studied. In order to evaluate the effectiveness with which libraries were sampled, rarefaction analyses were performed. For each library, the resulting curve did not reach its asymptotic phase, illustrating the incompletely described diversity of the studied microbial communities (Fig. 1). Nevertheless, Good's indices (*C*) calculation showed that libraries covered 46, 34 and 40% of bacterial community diversity for *S*, *BW* and *An* sediments, respectively (OTU_{0.03} definition).

Table 1
Sediment grain size distribution, porosity and organic matter content (%) of surface (*S*), burrow wall (*BW*) and anoxic (*An*) sediments in the *H. diversicolor* environment ($n = 4$ for each).

	<i>S</i>		<i>BW</i>		<i>An</i>	
	Mean	SD	Mean	SD	Mean	SD
Grain size distribution						
Clay (<4 μm)	14.2	3.2	28.9	5.6	26.7	5.8
Silts (4–63 μm)	28.0	2.4	51.0	4.6	53.8	9.8
Sand (63 μm–2 mm)	57.8	11.3	20.1	6.5	19.5	4.9
Porosity	0.53	0.05	0.53	0.03	0.45	0.02
Organic matter content	1.59	0.39	2.71	0.34	2.03	0.67

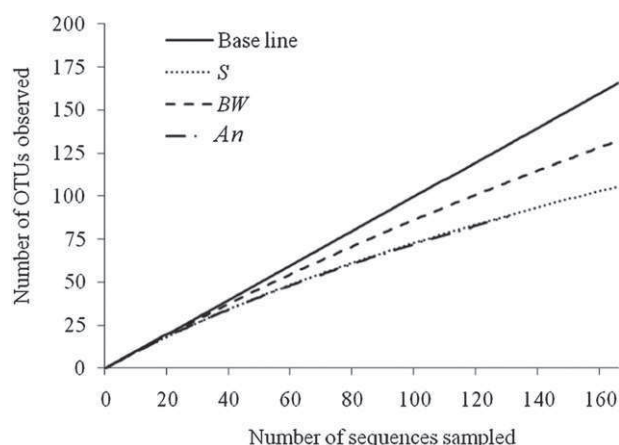


Fig. 1. Rarefaction curves of 16S rRNA libraries from surface (*S*), burrow wall (*BW*) and anoxic (*An*) sediment samples in *H. diversicolor* inhabited sediments.

The taxonomic affiliation of *S*, *BW* and *An* sequences was determined based on BLAST results (Fig. 2). Almost all sequences (i.e. 95%) were related to uncultured bacteria, which was not surprising considering that only few bacterial species inhabiting sediment can be cultured (Amann et al., 1995). Except for a few unclassified bacteria, sequences belonged to 10, 9, and 8 major bacterial phyla for surface, burrow wall and anoxic sediments, respectively. Clones could be classified into *Alphaproteobacteria*, *Betaproteobacteria*, *Gammaproteobacteria*, *Deltaproteobacteria*, *Epsilonproteobacteria* and an unclassified class in the phylum *Proteobacteria*; *Flavobacteria*, *Sphingobacteria* and an unclassified class in the phylum *Bacteroidetes*; *Acidobacteriales* and *Holophagae* in the phylum of *Acidobacteria*, as well as the phyla of *Chloroflexi*, *Cyanobacteria*, *Fibrobacteres*, *Firmicutes*, *Nitrospirae*, *Planctomycetes*, *Spirochetes* and *Verrucomicrobia*.

However, the structure of the bacterial communities presented important differences between the three investigated environments. The *Proteobacteria* were the most abundant phyla, accounting for more than 66% in each library (Fig. 2). Within this phylum, the community structure of surface sediments had a higher proportion of *Alphaproteobacteria* (21.4%) and *Gammaproteobacteria* (33.3%) compared with those of burrow wall (15.1% and 28.5%, respectively) and anoxic sediments (10.9% and 21.7%, respectively). *Deltaproteobacteria* mostly occurred in anoxic sediments (36%) and were less common in the burrow wall sediments (21%) and surface sediments (18%). *Betaproteobacteria* existed only in small proportions in surface (0.6%) and burrow wall (1.1%) sediments, as well as *Nitrospirae* (1.2 and 1.1% in *S* and *BW*, respectively). The oxygenic photosynthetic *Cyanobacteria* only occurred in surface sediments (4.2%) as did the *Fibrobacteres* but at lesser proportions (0.6%). In contrast, the *Spirochetes* were only found in clone libraries of burrow wall and anoxic sediments (1.1 and 2.3%, respectively). All samples harbored *Epsilonproteobacteria* (0.6–1.7%), *Chloroflexi* (0.6–2.3%), *Firmicutes* (0.6–0.8%) and *Verrucomicrobia* (1.6–2.4%) in small proportions, and *Acidobacteria* (3–6.1%), *Bacteroidetes* (3.1%–7.1%) and *Planctomycetes*

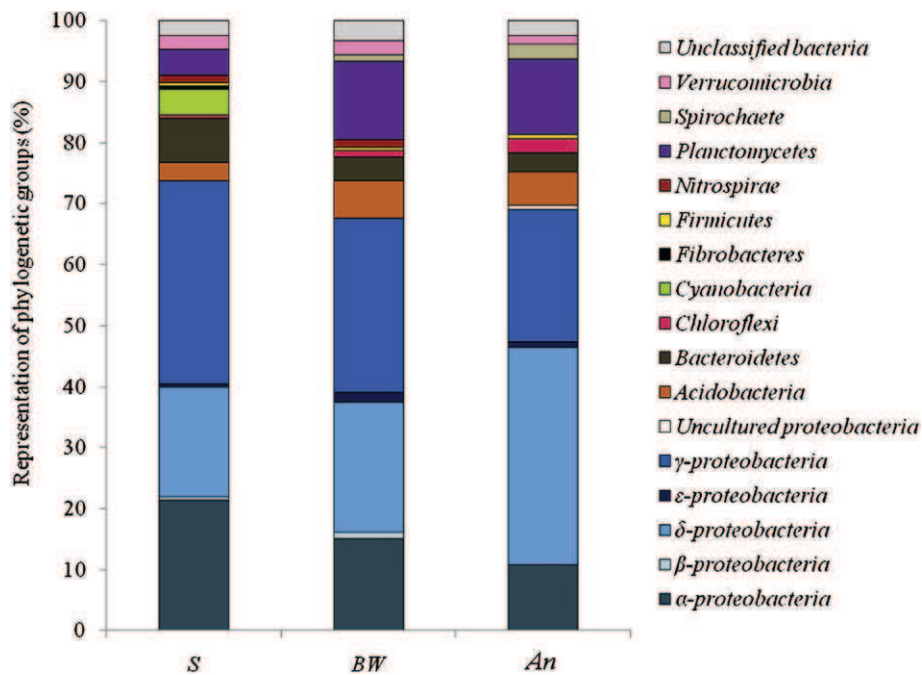


Fig. 2. Relative representation of phylogenetic groups in surface (S), burrow wall (BW) and anoxic (An) sediment samples in *H. diversicolor* inhabited sediments.

(4.2–12.8%) in greater proportions. They all also exhibited a small proportion of unclassified bacteria, 2.4%, 3.4%, and 2.3% for S, BW and An communities, respectively.

In the case of the *Deltaproteobacteria*, samples mainly contained the *Myxococcales* aerobic order (8.6%) as well as anaerobic orders implicated in the sulfur cycle like sulfur- and sulfate-reducing *Desulfuromonadales* (e.g. *Desulfuromonas* sp.) (25.8%), and *Desulfobacterales* (e.g. *Desulfosarcina variabilis*; Table 2) (53.8%). The majority of *Deltaproteobacteria* hosted in burrow wall sediments belonged essentially to the

Desulfobacterales and unclassified *Deltaproteobacteria*. The surface and anoxic clones were members of the *Desulfobacterales* and *Desulfuromonadales*. Through the three clone libraries, more than the half of the *Alphaproteobacteria* belonged to *Rhodobacterales* (61.3%), with the remaining clones belonging to the orders of *Rhodospirillales* (14.7%), *Rhizobiales* (9.3%), *Kordiimonadales* (6.7%), *Parvularculales* (2.7%) or *Sphingomonadales* (4%). Among these *Alphaproteobacteria*, more than half were found in surface sediments and 25 and 22%, respectively, were clones from the burrow wall and anoxic sediments. The clones in the *Gammaproteobacteria* are shared between several orders such as the *Oceanospirillales* (20.5%), *Chromatiales* (19.7%), *Alteromonadales* (13.1%), *Pseudomonadales* (10.7%) and a non-negligible part of unclassified *Gammaproteobacteria* (36.0%). Among the *Gammaproteobacteria*, the clones belong mainly to surface and burrow wall sediments.

Table 2

Percentage of the most represented orders in *Alphaproteobacteria*, *Deltaproteobacteria* and *Gammaproteobacteria* in the overall data set (total) and in each of the library surface (S), burrow wall (BW) and anoxic (An) sediments (S + BW + An = 100% of total).

	Total	S	BW	An
<i>Alphaproteobacteria</i> (75 seq.)				
<i>Rhodobacterales</i>	61.3	50	39.1	10.9
<i>Rhodospirillales</i>	14.7	27.3	18.2	54.6
<i>Rhizobiales</i>	9.3	57.1	—	42.9
<i>Kordiimonadales</i>	6.7	—	100	—
<i>Parvularculales</i>	2.7	—	100	—
<i>Sphingomonadales</i>	4	100	—	—
<i>Deltaproteobacteria</i> (93 seq.)				
<i>Desulfobacterales</i>	53.8	22	54	24
<i>Desulfuromonadales</i>	25.8	54.2	12.5	33.3
<i>Myxococcales</i>	8.6	25	50	25
Others	11.8	—	100	—
<i>Gammaproteobacteria</i> (122 seq.)				
<i>Oceanospirillales</i>	20.5	48	40	12
<i>Chromatiales</i>	19.7	50	37.5	12.5
<i>Alteromonadales</i>	13.1	68.7	25	6.3
<i>Pseudomonadales</i>	10.7	7.6	46.2	46.2
Others	36.0	31.8	43.2	25

The sequences of surface, burrow wall and anoxic clone libraries were assigned in 107, 141 and 88 OTUs, respectively (Table 3). Among the whole data set of sequences (336 OTUs), only 30 sequences were shared by at least two clone libraries. Global diversity indices pointed out that diversity was higher for the burrow wall bacterial community, with a Shannon index value of 4.86 (varying between 4.74 and 4.97) compared with 4.47 (varying between 4.34 and 4.67) and 4.31 (varying between 4.16 and 4.42) in surface and anoxic sediments, respectively, and a Simpson index value ($1 - D$) of 0.997 for the burrow wall clone library (0.991 for both the surface and anoxic libraries). Moreover, rarefaction analyses and richness indices clearly showed that the burrow wall bacterial community exhibits higher species richness (Fig. 1 and Table 3) compared to surface and anoxic communities which appeared to have similar biodiversity (despite the fact

Table 3
Statistics of clone libraries for the surface (*S*), burrow wall (*BW*) and anoxic (*An*) sediments (97% similarities).

Clone libraries	Surface			Burrow wall			Anoxic		
	Value/Mean	Lower limit	Upper limit	Value/Mean	Lower limit	Upper limit	Value/Mean	Lower limit	Upper limit
Number of clones	129	—	—	179	—	—	169	—	—
Number of OTUs	107	—	—	141	—	—	88	—	—
Species richness									
R	89	—	—	108	—	—	88	—	—
Boot	137.2	—	—	185.7	—	—	113.9	—	—
ACE	289.3	210.5	430.3	478.8	340.0	714.4	256.1	176.0	409.1
Chao1	235.6	175.7	347.9	550.7	367.2	882.9	236.6	161.9	386.8
Jack	245.3	198.7	291.8	1171.6	669.3	1673.8	259.9	195.3	324.4
Diversity indices									
Shannon	4.47	4.34	4.61	4.86	4.74	4.97	4.31	4.16	4.46
Simpson (1 - <i>D</i>)	0.991	—	—	0.997	—	—	0.991	—	—
Species evenness									
Pielou index	0.957	0.928	0.986	0.981	0.958	1.004	0.962	0.929	0.995
Simpson evenness	1.000	—	—	1.004	—	—	1.002	—	—
Mean divergence (π , bp)									
Intra-libraries	345.2	—	—	342.2	—	—	358.3	—	—
Inter-libraries	<i>S</i> – <i>BW</i> : 348.2	—	—	<i>S</i> – <i>An</i> : 357.4	—	—	<i>BW</i> – <i>An</i> : 354.8	—	—

that they presented different bacterial structures). This was not surprising and most likely linked to the high microorganism diversity revealed by culture-independent methods and by the microscale heterogeneity of biogeochemical/environmental parameters of marine sediments (Amann et al., 1995; Aller et al., 1998; Hughes et al., 2001). At 97% nucleotide identity, Chao1 and ACE indices were two times higher within the burrow wall than in surface or anoxic sediments. These results are consistent with previously reported taxon richness from various sediments (Kemp and Aller, 2004). Species evenness, estimated via both the Pielou and Simpson evenness indices (Table 3), was high for all compartments. The burrow wall showed higher taxon evenness than surface and anoxic sediment at 97% nucleotide identity.

All three statistical pairwise clone library comparisons with the β -LIBSHUFF method showed significant differences, with all corrected *P*-values = 0.00167 for a confidence interval of 0.01 (*P*-values = 0.0000 without any correction). In particular, comparisons revealed that sequences of burrow walls were composed of significantly different OTUs compared with surface and anoxic sediments. This was in agreement with the fact that clone libraries seemed to exhibit higher levels of specific sequences, with the burrow wall community presenting a slightly larger proportion (77.4%) compared to surface (69.4%) and anoxic (73.9%) sediment communities (Table 4). These significant differences are observed despite the fact that the different subsamples from each environment were pooled together before analysis. If there were only non-specific

Table 4
Fraction of shared OTUs (%) between the clone libraries of the surface (*S*), burrow wall (*BW*) and anoxic (*An*) sediments, and fraction of unique sequences in samples.

	<i>S</i>	<i>BW</i>	<i>An</i>	Specificity
<i>S</i>	—	19.8	10.8	69.4
<i>BW</i>	15.1	—	7.5	77.4
<i>An</i>	13.6	12.5	—	73.9

heterogeneous assemblages of bacterial species in the sediment matrices, then this pooling step would probably have led to no observable differences between the different environments. This is obviously not the case, which reinforces the hypothesis of a specific bacterial community associated with burrow wall sediments.

The three bacterial communities shared only a modest proportion of OTUs (6.7%). The burrow wall community shared more OTUs with the surface (15.1%; Table 4) compared with the anoxic community (7.5%); likewise, the surface community shared more OTUs with the burrow wall (19.8%) compared with the anoxic community (10.8%; Table 4). Moreover, mean pairwise divergence between sequences from different libraries (Table 3) was greater for the surface–anoxic and burrow wall–anoxic associations (357.4 and 354.8 bp, respectively) and slightly lower for the surface–burrow wall association (348.2 bp). Both these observations suggested that the bacterial community of burrow wall sediments resembled the community of the surface more than that of anoxic sediments. This was also statistically supported by cluster analysis associated with Jackknife analysis shown in Fig. 3.

4. Discussion

Concerning the increased abundance and activity observed for *H. diversicolor* burrow wall bacterial assemblage, the

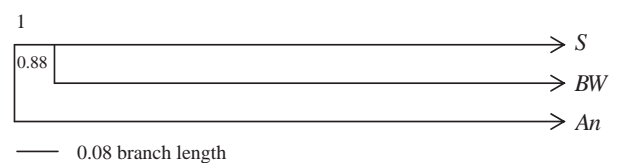


Fig. 3. Jackknife environment cluster analysis of surface (*S*), burrow wall (*BW*) and anoxic (*An*) clone libraries. Values are Jackknife fractions.

differences in the structure of bacterial communities may also be attributed to the burrow system and worm behavior and ecology (e.g. Goñi-Urriza et al., 1999; Marinelli et al., 2002; Lucas et al., 2003; Papaspyrou et al., 2006). As described in Table 5, the microbial community in the burrow wall has to deal with and to adapt to sediment characteristics (e.g. sediment grain size distribution, porosity and organic matter content; Table 2) and physicochemical conditions that are very different from those of the surface and surrounding anoxic sediments. Within the first millimeters, the organic-rich surface sediments generally represent a well-aerated dynamic place in part due to water current. Surface sediments also exhibit environmental variables that may vary on a diel pattern. Conversely, anoxic sediments are depleted in oxygen and water movements are limited by sediment compaction, resulting in a more stable environment compared with the surface. Finally, as previously described, the burrow environment is characterized by environmental variables which widely oscillate with the frequency of the worm's ventilation activity, and a higher quantity of labile organic material.

Considering the similarities between communities, the few studies that compared bacterial assemblages of surface, burrow wall and anoxic sediments found contrasting results. Based on 16S rRNA gene DGGE fingerprinting, Papaspyrou et al. (2006) found more similarities between the communities of burrow wall and anoxic sediments whereas, based on PLFA and T-RFLP analyses, respectively, Steward et al. (1996) and Laverock et al. (2010) found more similarities between the burrow wall and the surface communities. These results do not point to a general rule. The age of the burrow can explain this in part, as structural characteristics are evolving with time (e.g. construction, maintenance). Once abandoned, the old burrow structure becomes a non-bioirrigated anoxic system which can be progressively recolonized by surrounding anaerobic microbes (Diaz and Cutter, 2001). Hence, succession with time is an important question to address in order to explain the diversity of the

bacterial community structure of burrows. For instance, using a burrow mimic system and PLFA analysis, Marinelli et al. (2002) demonstrated that burrows with a longer residence time were characterized by higher microbial biomass and a distinct anaerobe signature, compared to burrows having shorter residence times. Finally, differences between bacterial communities may also depend on sedimentary matrix characteristics. In a recent study, Bertics and Ziebis (2009) showed that when geochemical parameters were alike, microbial communities associated with burrows of two crustaceans, the ghost shrimp *Neotrypaea californiensis* and the fiddler crab *Uca crenulata*, showed significant similarity to sediment surface communities. However, as previously mentioned, in the case of *H. diversicolor*, the burrow wall matrix is markedly different from that of the surface sediment (Tables 1 and 5).

Rarefaction curves clearly showed that the bacterial community of burrow walls exhibited substantially higher diversity. Due to construction and ventilation of burrows in otherwise anoxic sediments, thus redefining the biogeochemical conditions, *H. diversicolor* introduces a high level of heterogeneity into the sediments that seems to maintain a higher level of microbial diversity. Indeed, this biogeochemical heterogeneity most likely implies: (1) the providing of numerous microbial ecological niches which succeed in space and time and probably favor establishment of new and better adapted core taxa; and (2) proliferation of rare taxa from the sediment diversity reservoir (Pedrós-Alió, 2006). Moreover, burrow walls may be enriched with microbes brought into the burrow structure from overlying water through periodical burrow flushing or with microbes migrating from the nearby surrounding environment (oxic and anoxic) or transported by particles reworked during construction and maintenance of the biogenic structure (Reichardt et al., 1991). Furthermore, the community may also be enriched by microbes associated with the worms or other organisms attracted by this particular environment. Microbes may originate simply from the worm body or from the fecal pellets produced (ingested microbes,

Table 5
Comparison of surface (*S*), burrow wall (*BW*) and anoxic (*An*) ecosystem characteristics.

Properties	<i>S</i>	<i>BW</i>	<i>An</i>	References
Porosity	Higher	Variable	Lower	c
Water dynamic	Water current (advection) and diffusive boundary layer	Bio-irrigation	Molecular diffusion in muddy sediment	f,i
Variability of environmental conditions	Dynamics on large scale (hours, days)	Dynamics on small scale (min)	More stable	d,e,g
Organic matter content	Labile (phytoplankton, detritus)	Labile (mucus, phytoplankton, detritus)	Refractory	a
Oxygen	Aerobic, non-limiting	Oscillating	Anaerobic	d,e,h
Solutes	Non-limiting	Oscillating	± Limiting	d
pH	Stable, neutral	Oscillating (±2 units)	Stable, more acid	b

^a e.g. Aller and Aller, 1986; Papaspyrou et al., 2005.

^b e.g. Kristensen, 2000; Zhu et al., 2006.

^c e.g. Papaspyrou et al., 2006; Meysman et al., 2007.

^d e.g. Aller, 1994; Aller et al., 1998; Kristensen, 2000.

^e e.g. Glud, 2008.

^f e.g. Forster and Graf, 1995; Kristensen, 2001.

^g e.g. Glud et al., 1999.

^h e.g. Revsbech and Jørgensen, 1986; Aller, 1988.

ⁱ e.g. Berner, 1980; Aller, 1982; Jørgensen and Revsbech, 1985; Glud et al., 2007.

endogenous intestinal tract microflora) through excretion. Indeed, differential digestion of bacteria passing through the digestive tract of *H. diversicolor*, as well as enteric bacteria release during excretion have been demonstrated (e.g. Wilde and Plante, 2002; Lucas et al., 2003; Grossi et al., 2006). These selected bacteria may enrich the burrow wall community. Finally, macrofaunal bioturbation activities as well as inferred sediment heterogeneity induce an important microbial mixing of bacterial populations suitable to the expansion of phylogenetic and metabolic diversity of microbes.

In conclusion, based on the comparison and bioinformatic analysis of clone libraries, the present work contributes to the understanding of the microbiology of bioturbated sediments. Despite the probable existence of variability among the communities of the different burrow walls (e.g. age of the burrow), as shown in this study, the biogeochemical constraints of this particular environment lead to selection of a specific community associated with burrow walls, with significantly higher diversity compared with the nearby surface and anoxic sediments. These results provide further evidence of the determinant role of macrobenthic invertebrates in microbial diversity in marine sediments. Clearly, further studies are now needed to improve our knowledge of the fine-scale phylogenetic architecture and functioning of the various bacterial communities associated with the complex ecosystem formed by burrow walls of marine polychaetes.

Acknowledgments

This work is part of L. Pischedda's PhD research. The work was supported by the EU commission (STREP COBO; contract number GOCE-CT-2003-505564) and the French program ANR DHYVA (project ANR-06-SEST-09). We would like to thank B. Mériçot for constructive discussion and assistance in the diversity indices. We thank the anonymous reviewer for helpful comments and suggestions. Nereis Park contribution number 29.

Appendix. Supplementary data

Supplementary data related to this article can be found online at doi:10.1016/j.resmic.2011.07.008.

References

- Aller, J.Y., Aller, R.C., 1986. Evidence for localized enhancement of biological-activity associated with tube and burrow structures in deep-sea sediments at the Hebble site, Western North-Atlantic. *Deep-Sea Res. Oceanogr. Res. Pap.* 33, 755–790.
- Aller, R.C., 1982. The effects of macrobenthos on chemical properties of marine sediment and overlying water. In: McCall, P.L., Tevesz, M.J.S. (Eds.), *Animal-sediment Relations – the Biogenic Alteration of Sediments*. Topics in Geobiology, vol. 2. Plenum Press, New York.
- Aller, R.C., 1988. Benthic fauna and biogeochemical processes in marine sediments: the role of burrow structures. In: Blackburn, T.H., Sørensen, J. (Eds.), *Nitrogen Cycling in Coastal Marine Environments*. John Wiley and Sons, Chichester.
- Aller, R.C., 1994. Bioturbation and remineralization of sedimentary organic matter: effects of redox oscillation. *Chem. Geol.* 114, 331–345.
- Aller, R.C., 2001. Transport and reactions in the bioirrigated zone. In: Boudreau, B., Jørgensen, B.B. (Eds.), *The Benthic Boundary Layer: Transport Processes and Biogeochemistry*. Oxford Press.
- Aller, R.C., Hall, P.O.J., Rude, P.D., Aller, J.Y., 1998. Biogeochemical heterogeneity and suboxic diagenesis in hemipelagic sediments of the Panama Basin. *Deep-Sea Res. Oceanogr. Res. Pap.* 45, 133–165.
- Aller, R.C., Yingst, J.Y., 1978. Biogeochemistry of tube-dwellings – study of sedentary polychaete *Amphitrite ornata* (Leidy). *J. Mar. Res.* 36, 201–254.
- Aller, R.C., Yingst, J.Y., 1985. Effects of the marine deposit-feeders *Heteromastus filiformis* (Polychaeta), *Macoma balthica* (Bivalvia), and *Tellina texana* (Bivalvia) on averaged sedimentary solute transport, reaction rates, and microbial distributions. *J. Mar. Res.* 43, 615–645.
- Alongi, D.M., 1985. Effect of physical disturbance on population-dynamics and trophic interactions among microbes and meiofauna. *J. Mar. Res.* 43, 351–364.
- Amann, R.I., Ludwig, W., Schleifer, K.H., 1995. Phylogenetic identification and *in-situ* detection of individual microbial cells without cultivation. *Microbiol. Rev.* 59, 143–169.
- Ashelford, K.E., Chuzhanova, N.A., Fry, J.C., Jones, A.J., Weightman, A.J., 2006. New screening software shows that most recent large 16S rRNA gene clone libraries contain chimeras. *Appl. Environ. Microbiol.* 72, 5734–5741.
- Berner, R.A., 1980. *Early Diagenesis: a Theoretical Approach*. Princeton University Press, Princeton, N.J.
- Bertics, V.J., Ziebis, W., 2009. Biodiversity of benthic microbial communities in bioturbated coastal sediments is controlled by geochemical microniches. *ISME J.* 3, 1269–1285.
- Bertics, V.J., Ziebis, W., 2010. Bioturbation and the role of microniches for sulfate reduction in coastal marine sediments. *Environ. Microbiol.* 12, 3022–3034.
- Boudreau, B.P., Marinelli, R.L., 1994. A modeling study of discontinuous biological irrigation. *J. Mar. Res.* 52, 947–968.
- Costa, P.F.E., Oliveira, R.F., Fonseca, L.C.D., 2006. Feeding ecology of *Nereis diversicolor* (O.F. Müller) (Annelida, Polychaeta) on estuarine and lagoon environments in the south-west coast of Portugal. *J. Aquat. Sci.* 1, 114–126.
- Davey, J.T., 1994. The architecture of the burrow of *Nereis diversicolor* and its quantification in relation to sediment-water exchange. *J. Exp. Mar. Biol. Ecol.* 179, 115–129.
- Defretin, R., 1971. The tubes of polychaete annelids. *Comp. Biochem.* 26, 713–747.
- DeSantis, T.Z., Hugenholtz, P., Keller, K., Brodie, E.L., Larsen, N., Piceno, Y. M., Phan, R., Andersen, G.L., 2006. NAST: a multiple sequence alignment server for comparative analysis of 16S rRNA genes. *Nucl. Acids Res.* 34, 394–399.
- Diaz, R.G., Cutter, G.R., 2001. *In situ* measurement of organism-sediment interaction: rates of burrow formation/abandonment and sediment oxidation/reduction. In: Aller, J.Y., Woodin, S.A., Aller, R.C. (Eds.), *Organism–Sediment Interactions*. University of South Carolina Press, Columbia.
- Dobbs, F.C., Guckert, J.B., 1988. *Callianassa trilobata* (Crustacea, Thalassinidea) influences abundance of meiofauna and biomass, composition, and physiologic state of microbial communities within its burrow. *Mar. Ecol. Progr. Ser.* 45, 69–79.
- Excoffier, L., Laval, G., Schneider, S., 2005. Arlequin ver. 3.0: an integrated software package for population genetics data analysis. *Evol. Bioinformatics Online* 1, 47–50.
- Fenchel, T., 1996. Worm burrows and oxic microniches in marine sediments. I. Spatial and temporal scales. *Mar. Biol.* 127, 289–295.
- Forster, S., Graf, G., 1992. Continuously measured changes in redox potential influenced by Oxygen Penetrating from burrows of *Callianassa subterranea*. *Hydrobiol.* 235, 527–532.
- Forster, S., Graf, G., 1995. Impact of irrigation on oxygen flux into the sediment – intermittent pumping by *Callianassa subterranea* and piston-pumping by *Lanice conchilega*. *Mar. Biol.* 123, 335–346.
- Gilbert, F., Aller, R.C., Hulth, S., 2003. The influence of macrofaunal burrow spacing and diffusive scaling on sedimentary nitrification and denitrification: an experimental simulation and model approach. *J. Mar. Res.* 61, 101–125.
- Glud, R.N., 2008. Oxygen dynamics of marine sediments. *Mar. Biol. Res.* 4, 243–289.

- Glud, R.N., Berg, P., Fossing, H., Jorgensen, B.B., 2007. Effect of the diffusive boundary layer on benthic mineralization and O₂ distribution: a theoretical model analysis. *Limnol. Oceanogr* 52, 547–557.
- Glud, R.N., Kühl, M., Kohls, O., Ramsing, N.B., 1999. Heterogeneity of oxygen production and consumption in a photosynthetic microbial mat as studied by planar optodes. *J. Phycol* 35, 270–279.
- Glud, R.N., Santegoeds, C.M., Beer, D.D., Kohls, O., Ramsing, N.B., 1998. Oxygen dynamics at the base of a biofilm studied with planar optodes. *Aquat. Microb. Ecol.* 14, 223–233.
- Goñi-Urriza, M., De Montaudouin, X., Guyoneaud, R., Bachelet, G., De Wit, R., 1999. Effect of macrofaunal bioturbation on bacterial distribution in marine sandy sediments, with special reference to sulphur-oxidising bacteria. *J. Sea. Res.* 41, 269–279.
- Good, I.J., 1953. The population frequencies of species and the estimation of the population parameters. *Biometrika* 40, 237–264.
- Grossi, V., Cuny, P., Caradec, S., Nerini, D., Pancost, R., Gilbert, F., 2006. Impact of feeding by *Arenicola marina* and ageing of faecal material on fatty acid distribution and bacterial community structure in marine sediments: an experimental approach. *J. Exp. Mar. Biol. Ecol.* 336, 54–64.
- Hughes, J.B., Hellmann, J.J., Ricketts, T.H., Bohannon, B.J.M., 2001. Counting the uncountable: statistical approaches to estimating microbial diversity. *Appl. Environ. Microbiol.* 67, 4399–4406.
- Jorgensen, B.B., Revsbech, N.P., 1985. Diffusive boundary-layers and the oxygen-uptake of sediments and detritus. *Limnol. Oceanogr* 30, 111–122.
- Kristensen, E., 1981. Direct measurement of ventilation and oxygen uptake in 3 species of tubicolous polychaetes (*Nereis* Spp.). *J. Comp. Physiol. B.* 145, 45–50.
- Kemp, P.F., Aller, J.Y., 2004. Bacterial diversity in aquatic and other environments: what 16S rDNA libraries can tell us. *FEMS Microbiol. Ecol.* 47, 161–171.
- Kristensen, E., 1983. Ventilation and oxygen uptake by 3 species of *Nereis* (Annelida, Polychaeta). 2. Effects of temperature and salinity changes. *Mar. Ecol. Progr. Ser.* 12, 299–305.
- Kristensen, E., 1984. Effect of natural concentrations on nutrient exchange between a polychaete burrow in estuarine sediment and the overlying water. *J. Exp. Mar. Biol. Ecol.* 75, 171–190.
- Kristensen, E., 1985. Oxygen and inorganic nitrogen exchange in a *Nereis virens* (Polychaeta) bioturbated sediment-water system. *J. Coast. Res.* 1, 109–116.
- Kristensen, E., 2000. Organic matter diagenesis at the oxic/anoxic interface in coastal marine sediments, with emphasis on the role of burrowing animals. *Hydrobiol* 426, 1–24.
- Kristensen, E., 2001. Impact of polychaetes (*Nereis* and *Arenicola*) on sediment biogeochemistry in coastal areas: past, present, and future developments. *Abs. Pap. Am. Chem. Soc.* 221, U538.
- Kristensen, E., Jensen, M.H., Aller, R.C., 1991. Direct measurement of dissolved inorganic nitrogen exchange and denitrification in individual polychaete (*Nereis virens*) burrows. *J. Mar. Res.* 49, 355–377.
- Kristensen, E., Jensen, M.H., Andersen, T.K., 1985. The impact of polychaete (*Nereis virens* Sars) burrows on nitrification and nitrate reduction in estuarine sediments. *J. Exp. Mar. Biol. Ecol.* 85, 75–91.
- Laverock, B., Smith, C.J., Tait, K., Osborn, A.M., Widdicombe, S., Gilbert, J. A., 2010. Bioturbating shrimp alter the structure and diversity of bacterial communities in coastal marine sediments. *ISME J.*, 1–14.
- Lozupone, C., Hamady, M., Knight, R., 2006. UniFrac – an online tool for comparing microbial community diversity in a phylogenetic context. *B.M. C. Bioinform.* 7, 371–385.
- Lucas, F.S., Bertru, G., Hofle, M.G., 2003. Characterization of free-living and attached bacteria in sediments colonized by *Hediste diversicolor*. *Aquat. Microb. Ecol.* 32, 165–174.
- Marinelli, R.L., Lovell, C.R., Wakeham, S.G., Ringelberg, D.B., White, D.C., 2002. Experimental investigation of the control of bacterial community composition in macrofaunal burrows. *Mar. Ecol. Progr. Ser.* 235, 1–13.
- Matsui, G.Y., Ringelberg, D.B., Lovell, C.R., 2004. Sulfate-reducing Bacteria in tubes constructed by the marine infaunal polychaete *Diopatra cuprea*. *Appl. Environ. Microbiol.* 70, 7053–7065.
- Meysman, F.J.R., Galaktionov, E.S., Middelburg, J.J., 2005. Irrigation patterns in permeable sediments induced by burrow ventilation: a case study of *Arenicola marina*. *Mar. Ecol. Progr. Ser.* 303, 195–212.
- Meysman, F.J.R., Malyuga, V.S., Boudreau, B.P., Middelburg, J.J., 2007. The influence of porosity gradients on mixing coefficients in sediments. *Geochim. Cosmochim. Acta* 71, 961–973.
- Miron, G., Kristensen, E., 1993. Behavioral response of 3 Nereid polychaetes to injection of sulfide inside burrows. *Mar. Ecol. Progr. Ser.* 101, 147–155.
- Papaspyrou, S., Gregersen, T., Cox, R.P., Thessalou-Legaki, M., Kristensen, E., 2005. Sediment properties and bacterial community in burrows of the ghost shrimp *Pestarella tyrrhena* (Decapoda: Thalassinidea). *Aquat. Microb. Ecol.* 38, 181–190.
- Papaspyrou, S., Gregersen, T., Kristensen, E., Christensen, B., Cox, R.P., 2006. Microbial reaction rates and bacterial communities in sediment surrounding burrows of two nereidid polychaetes (*Nereis diversicolor* and *N. virens*). *Mar. Biol.* 148, 541–550.
- Pedrós-Alió, C., 2006. Marine microbial diversity: can it be determined? *Trends Microbiol.* 14 (6), 257–263.
- Phillips, T.M., Lovell, C.R., 1999. Distributions of total and active bacteria in biofilms lining tubes of the onuphid polychaete *Diopatra cuprea*. *Mar. Ecol. Progr. Ser.* 183, 169–178.
- Pischedda, L., Poggiale, J.C., Cuny, P., Gilbert, F., 2008. Imaging oxygen distribution in marine sediments. The importance of bioturbation and sediment heterogeneity. *Acta Biotheor* 56, 123–135.
- Polerecky, L., Volkenborn, N., Stief, P., 2006. High temporal resolution oxygen imaging in bioirrigated sediments. *Environ. Sci. Technol.* 40, 5763–5769.
- Reichardt, W., Piker, L., Von Juterzenka, K., Heise, S., Grossmann, S., Bussmann, I., 1991. Burrowing macrozoobenthos as major determinant of bacteria in sediments. *Kieler Meeresforsch* 8, 86–91.
- Reise, K., 2002. Sediment mediated species interactions in coastal waters. *J. Sea Res.* 48, 127–141.
- Revsbech, N.P., Jorgensen, B.B., 1986. Microelectrodes – their use in microbial ecology. *Adv. Microb. Ecol.* 9, 293–352.
- Riisgård, H.U., Banta, G.T., 1998. Irrigation and deposit feeding by the lugworm *Arenicola marina*, characteristics and secondary effects on the environment. A review of current knowledge. *Vie et Milieu* 48, 243–257.
- Satoh, H., Nakamura, Y., Okabe, S., 2007. Influences of infaunal burrows on the community structure and activity of ammonia-oxidizing bacteria in intertidal sediments. *Appl. Environ. Microbiol.* 73, 1341–1348.
- Schloss, P.D., Handelsman, J., 2005. Introducing DOTUR, a computer program for defining operational taxonomic units and estimating species richness. *Appl. Environ. Microbiol.* 71, 1501–1506.
- Schloss, P.D., Handelsman, J., 2006. Introducing SONS, a tool for OTU-based comparisons of membership and structure between microbial communities. *Appl. Environ. Microbiol.* 72, 6773–6779.
- Schloss, P.D., Larget, B.R., Handelsman, J., 2004. Integration of microbial ecology and statistics: a test to compare gene libraries. *Appl. Environ. Microbiol.* 70, 5485–5492.
- Schumacher, B.A., 2002. Methods for the Determination of Total Organic Carbon (TOC) in Soils and Sediments. PhD Thesis, United States Environmental Protection Agency Environmental Sciences, Division National Exposure Research Laboratory.
- Sokal, R.R., Rohlf, F.J., 1995. *Biometry: The Principles and Practice of Statistics in Biological Research*. Freeman and Company.
- Staden, R., 1996. The Staden sequence analysis package. *Mol. Biotechnol.* 5, 233–241.
- Steward, C.C., Nold, S.C., Ringelberg, D.B., White, D.C., Lovell, C.R., 1996. Microbial biomass and community structures in the burrows of bromophenol producing and non-producing marine worms and surrounding sediments. *Mar. Ecol. Progr. Ser.* 133, 149–165.
- Sun, M.Y., Aller, R.C., Lee, C., Wakeham, S.G., 1999. Enhanced degradation of algal lipids by benthic macrofaunal activity: effect of *Yoldia limatula*. *J. Mar. Res.* 57, 775–804.
- Tamura, K., Dudley, J., Nei, M., Kumar, S., 2007. MEGA4: molecular evolutionary genetics analysis (MEGA) software version 4.0. *Mol. Biol. Evol.* 24, 1596–1599.
- Thompson, J.D., Gibson, T.J., Plewniak, F., Jeanmougin, F., Higgins, D.G., 1997. The CLUSTAL X windows interface: flexible strategies for multiple sequence alignment aided by quality analysis tools. *Nucl. Acids Res.* 25, 4876–4882.

- Van Elsas, J.D., Boersma, F.G.H., 2011. A review of molecular methods to study the microbiota of soil and the mycosphere. *Eur. J. Soil Biol.* 47, 77–87.
- Webb, A.P., Eyre, B.D., 2004. The effect of natural populations of the burrowing and grazing soldier crab (*Mictyris longicarpus*) on sediment irrigation, benthic metabolism and nitrogen fluxes. *J. Exp. Mar. Biol. Ecol.* 309, 1–19.
- Wenzhöfer, F., Holby, O., Kohls, O., 2001. Deep penetrating benthic oxygen profiles measured in situ by oxygen optodes. *Deep-Sea Res. Oceanogr. Res. Pap.* 48, 1741–1755.
- Whitman, W.B., Coleman, D.C., Wiebe, W.J., 1998. Prokaryotes: the unseen majority. *Proc. Natl. Acad. Sci. U S A* 95, 6578–6583.
- Wilde, S.B., Plante, C.J., 2002. Spatial heterogeneity of bacterial assemblages in marine sediments: the influence of deposit feeding by *Balanoglossus aurantiacus*. *Estuar. Coast. Shelf Sci.* 55, 97–107.
- Zhu, Q.Z., Aller, R.C., Fan, Y.Z., 2006. Two-dimensional pH distributions and dynamics in bioturbated marine sediments. *Geochem. Cosmochim. Acta* 70, 4933–4949.