



HAL
open science

Life-cycle assessment of local feedstock supply scenarios to compare candidate biomass sources

Caroline Godard, Joachim Boissy, Benoit Gabrielle

► **To cite this version:**

Caroline Godard, Joachim Boissy, Benoit Gabrielle. Life-cycle assessment of local feedstock supply scenarios to compare candidate biomass sources. 2011. <hal-00701554>

HAL Id: hal-00701554

<https://hal.science/hal-00701554v1>

Preprint submitted on 29 May 2012

HAL is a multi-disciplinary open access archive for the deposit and dissemination of scientific research documents, whether they are published or not. The documents may come from teaching and research institutions in France or abroad, or from public or private research centers.

L'archive ouverte pluridisciplinaire **HAL**, est destinée au dépôt et à la diffusion de documents scientifiques de niveau recherche, publiés ou non, émanant des établissements d'enseignement et de recherche français ou étrangers, des laboratoires publics ou privés.



HAL Authorization

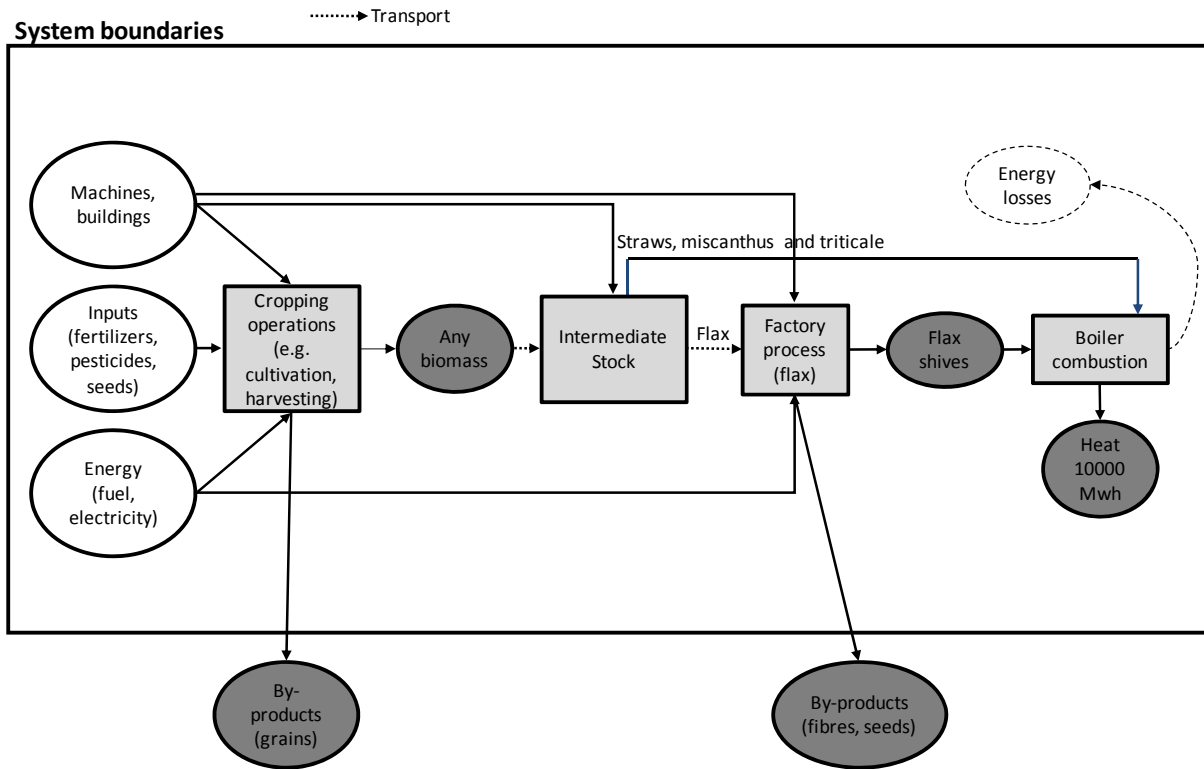


Figure 1 : Boundaries of the studied system.

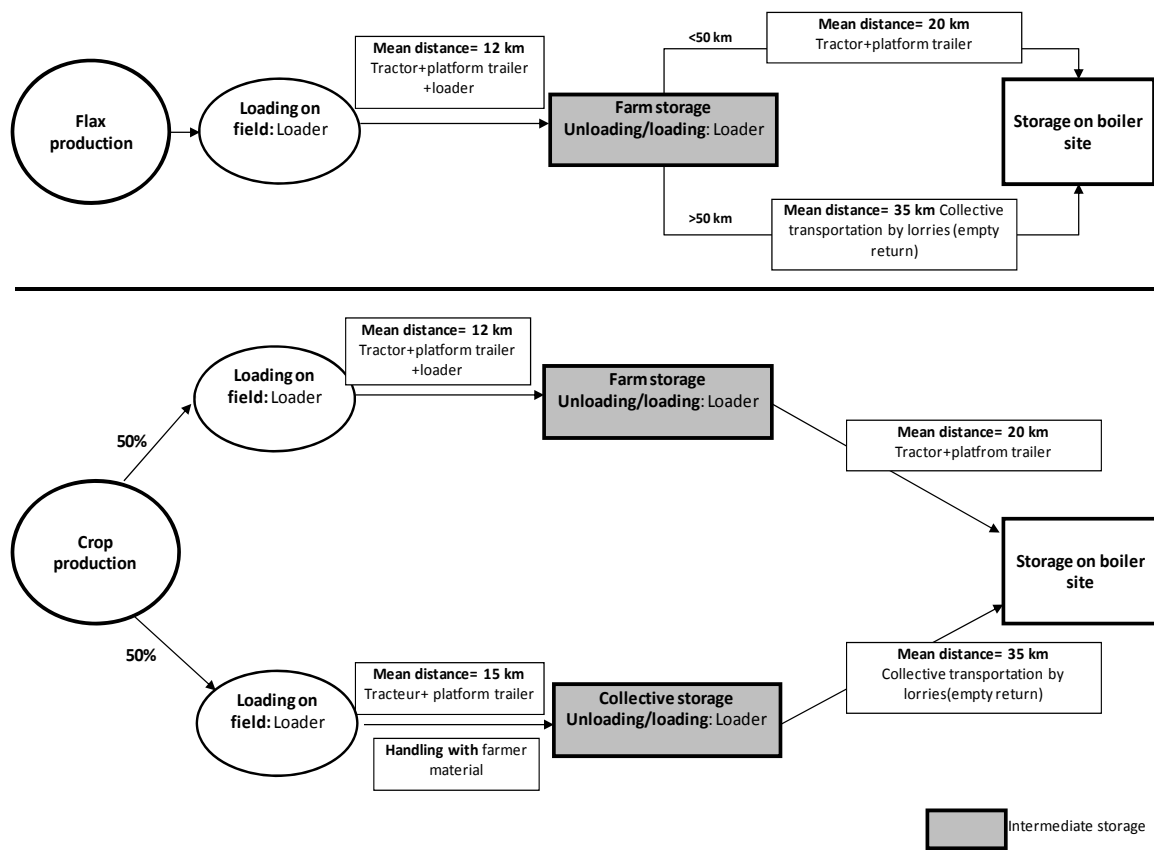


Figure 2 : Mobilization hypothesis of biomasses

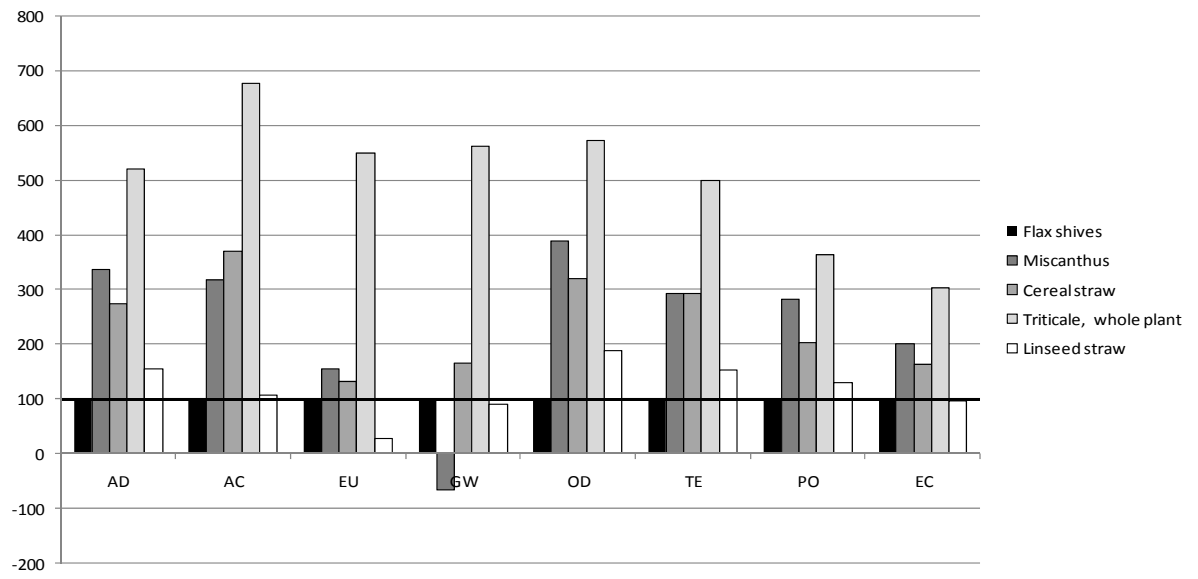


Figure 3 : Biomass comparison in index base 100 with economic allocation

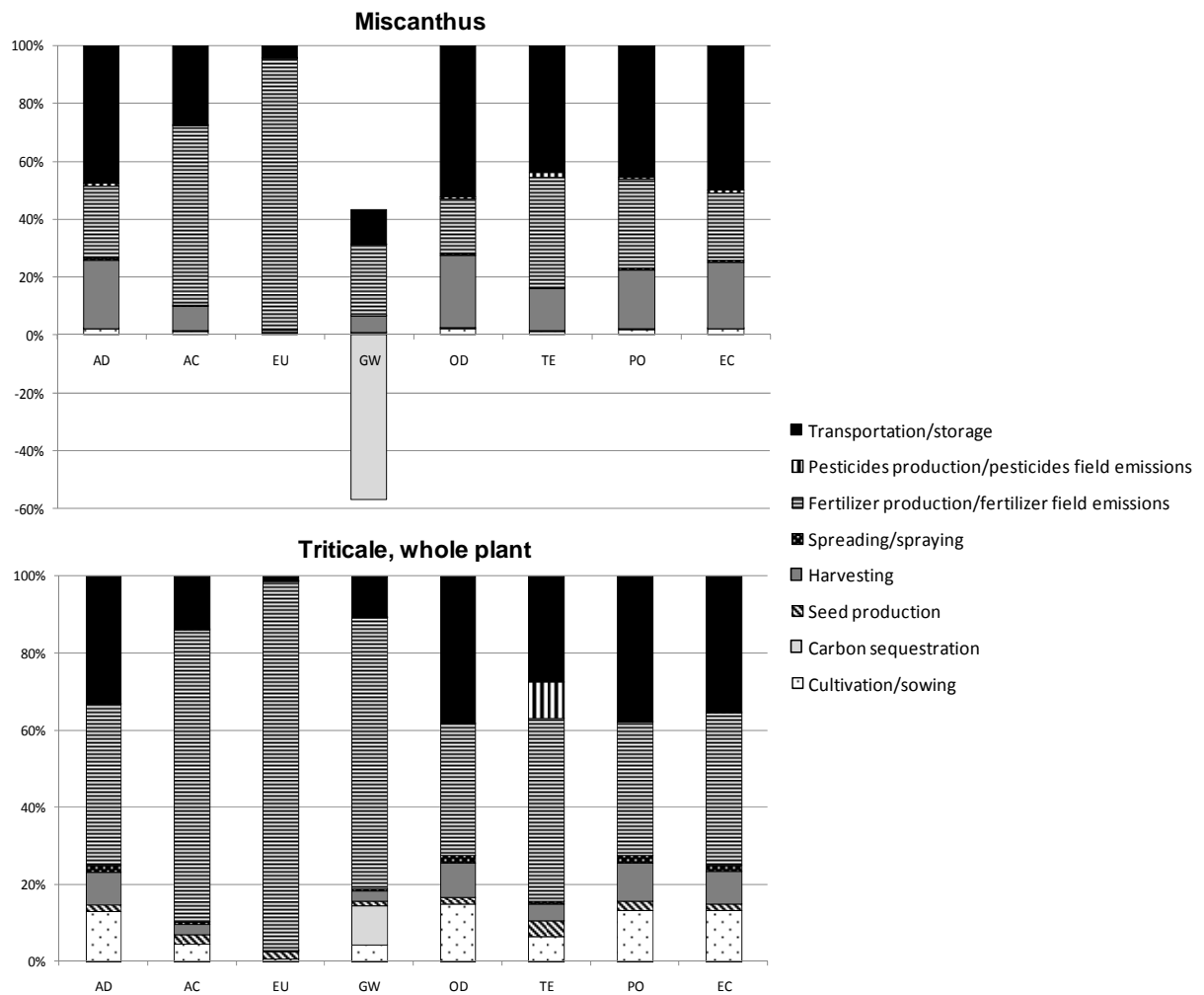


Figure 4 : Contributions of dedicated energy crops to the category impacts

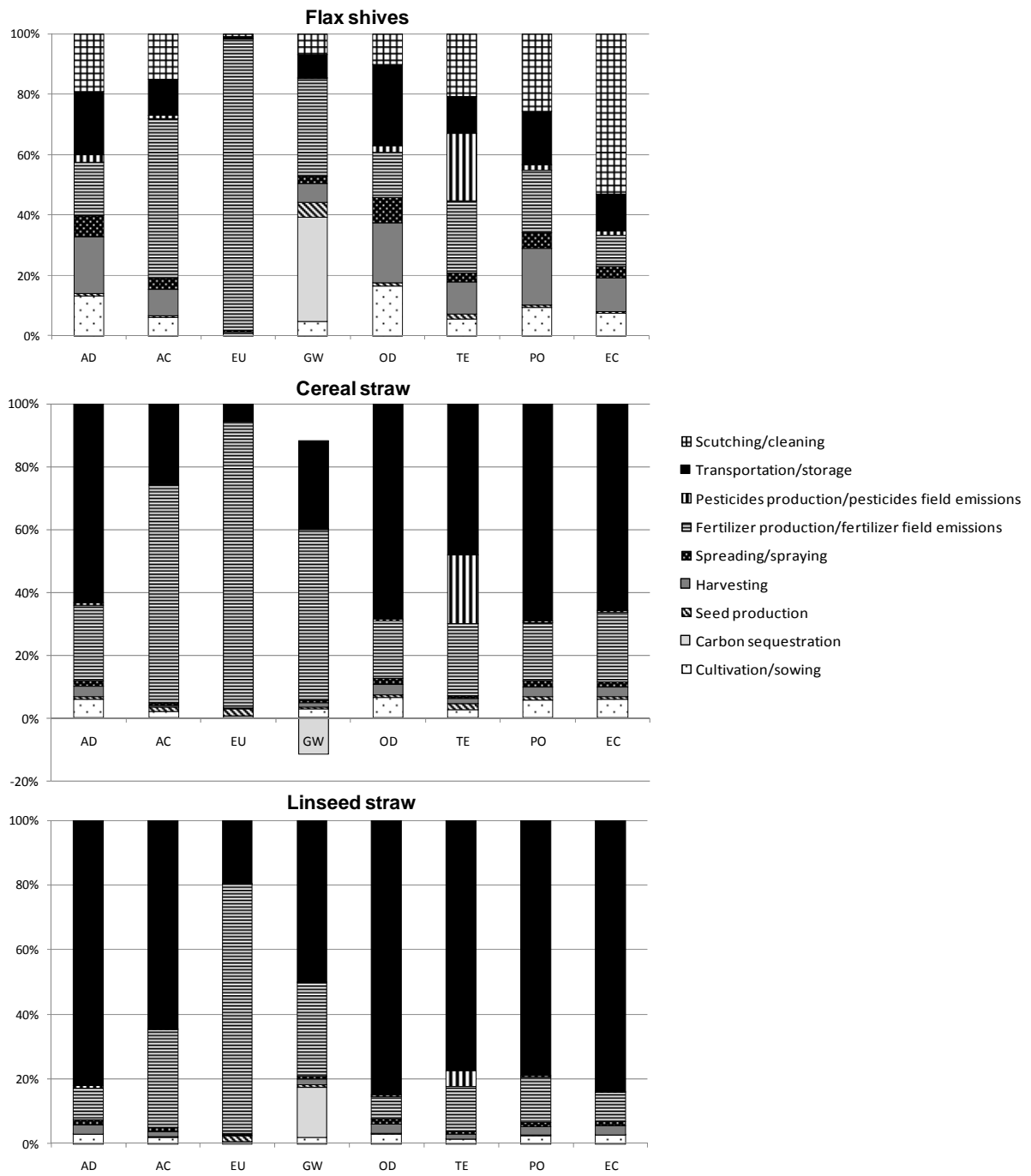


Figure 5 : Contributions of crop by-products to the category impacts

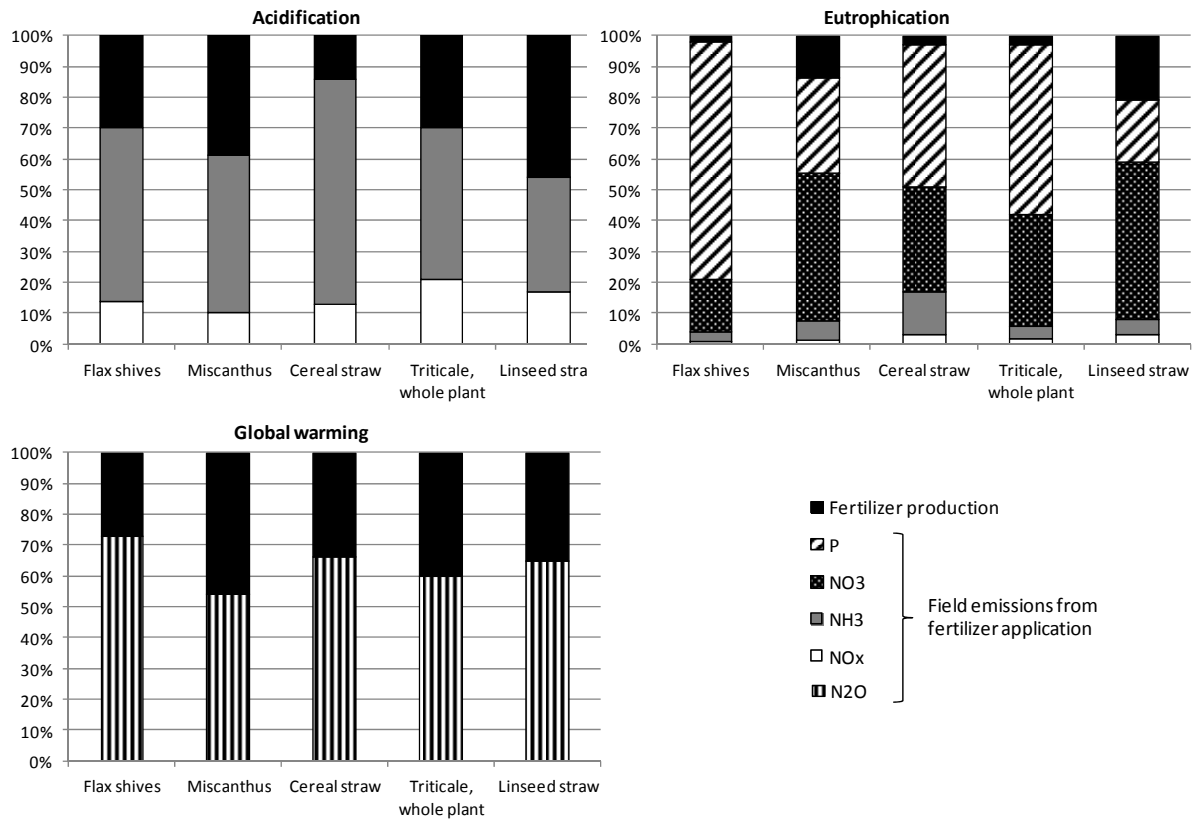


Figure 6 : Contribution analysis of the fertilization (fertilizer production + fertilizer field emissions).

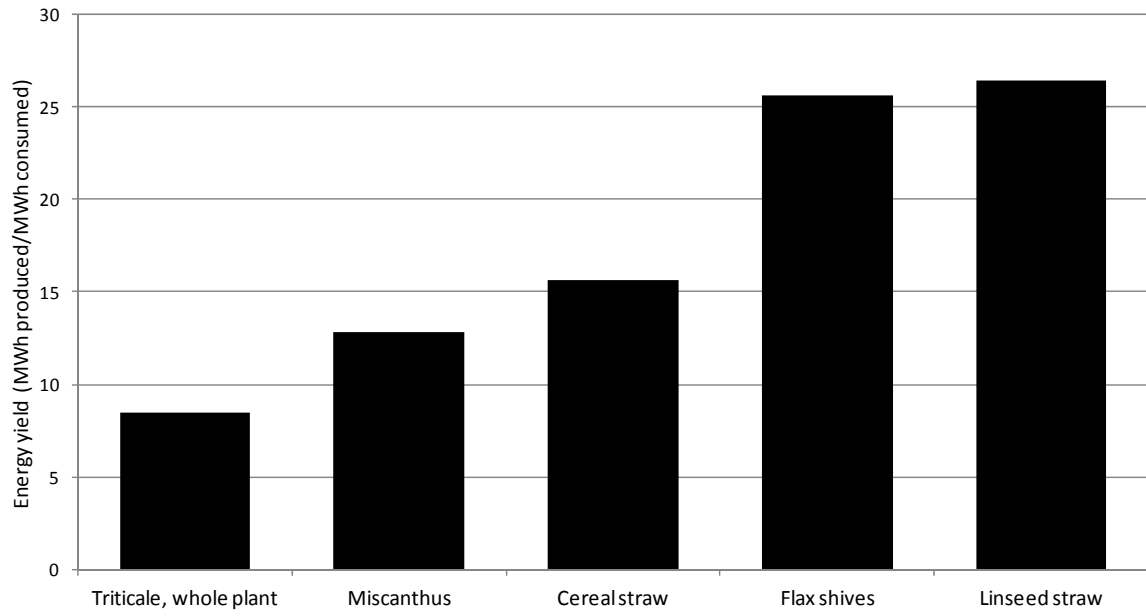


Figure 7 : Net energy yield of biomasses.

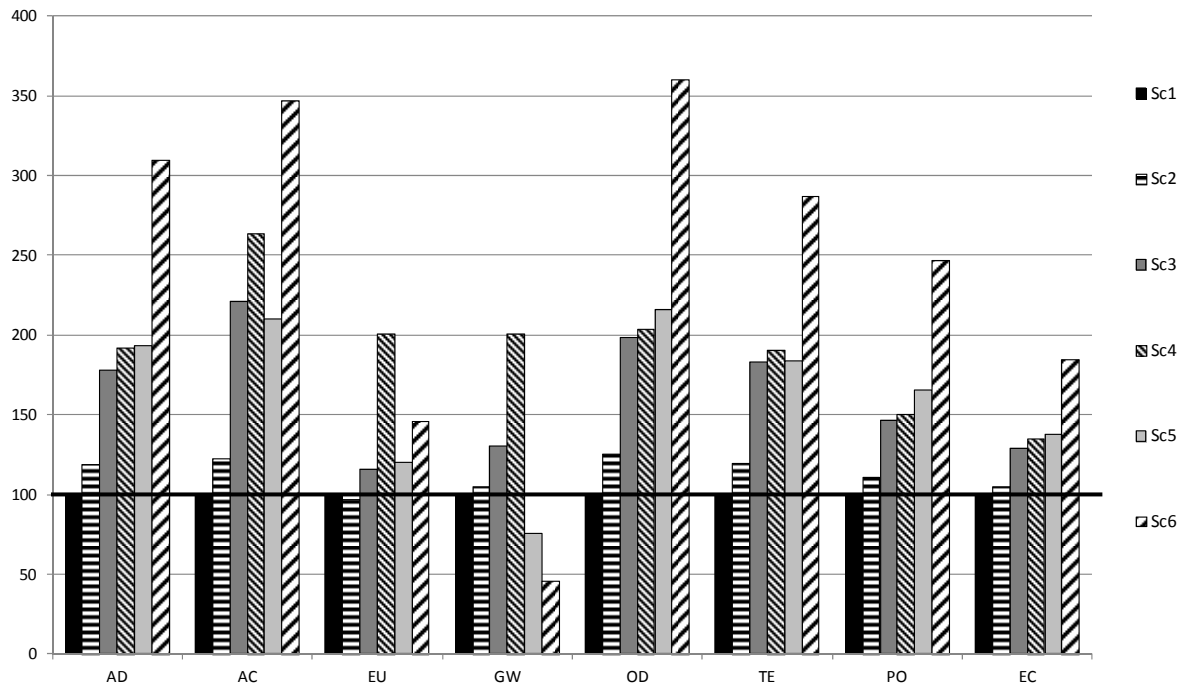


Figure 8 : Scenario comparison in index base 100

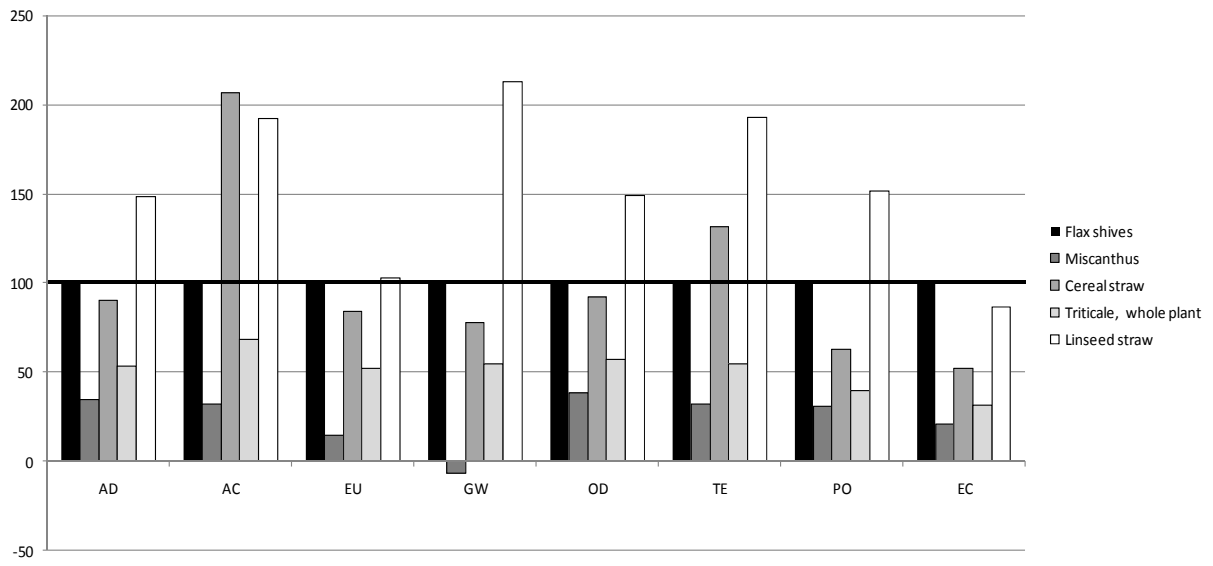


Figure 9 : Biomass comparison with mass allocation