



HAL
open science

Variation in breast cancer risk with mutation position smoking alcohol and chest X-ray history in the French National BRCA1/2 carrier cohort (GENEPSO)

Julie Lecarpentier, Catherine Noguès, Emmanuelle Mouret-Fourme, Dominique Stoppa-Lyonnet, Christine Lasset, Olivier Caron, Jean-Pierre Fricker, Laurence Gladiëff, Laurence Faivre, Hagay Sobol, et al.

► To cite this version:

Julie Lecarpentier, Catherine Noguès, Emmanuelle Mouret-Fourme, Dominique Stoppa-Lyonnet, Christine Lasset, et al.. Variation in breast cancer risk with mutation position smoking alcohol and chest X-ray history in the French National BRCA1/2 carrier cohort (GENEPSO). *Breast Cancer Research and Treatment*, 2011, 130 (3), pp.927-938. <10.1007/s10549-011-1655-3>. <hal-00698006>

HAL Id: hal-00698006

<https://hal.science/hal-00698006v1>

Submitted on 26 Aug 2022

HAL is a multi-disciplinary open access archive for the deposit and dissemination of scientific research documents, whether they are published or not. The documents may come from teaching and research institutions in France or abroad, or from public or private research centers.

L'archive ouverte pluridisciplinaire HAL, est destinée au dépôt et à la diffusion de documents scientifiques de niveau recherche, publiés ou non, émanant des établissements d'enseignement et de recherche français ou étrangers, des laboratoires publics ou privés.



Distributed under a Creative Commons CC BY-NC 4.0 - Attribution - Non-commercial use - International License

Variation in breast cancer risk with mutation position, smoking, alcohol, and chest X-ray history, in the French National BRCA1/2 carrier cohort (GENEPSO)

Julie Lecarpentier · Catherine Noguès · Emmanuelle Mouret-Fourme ·
Dominique Stoppa-Lyonnet · Christine Lasset · Olivier Caron · Jean-Pierre Fricker ·
Laurence Gladieff · Laurence Faivre · Hagay Sobol · Paul Gesta · Marc Frenay ·
Elisabeth Luporsi · Isabelle Coupier · GENEPSO · Rosette Lidereau · Nadine Andrieu

Abstract Germline mutations in BRCA1/2 confer a high risk of breast cancer (BC), but the magnitude of this risk varies according to various factors. Although controversial, there are data to support the hypothesis of allelic-risk heterogeneity. We assessed variation in BC risk according to the location of mutations recorded in the French study GENEPSO. Since the women in this study were selected from high-risk families, oversampling of affected women was eliminated by using a weighted Cox-regression model. Women were censored at the date of diagnosis when affected by any cancer, or the date of interview when

unaffected. A total of 990 women were selected for the analysis: 379 were classified as affected, 611 as unaffected. For BRCA1, there was some evidence of a central region where the risk of BC is lower (codons 374–1161) (HR = 0.59, $P = 0.04$). For BRCA2, there was a strong evidence for a region at decreased risk (codons 957–1827) (HR = 0.35, $P = 0.005$) and for one at increased risk (codons 2546–2968) (HR = 3.56, $P = 0.01$). Moreover, we found an important association between radiation exposure from chest X-rays and BC risk (HR = 4.29, $P < 10^{-3}$) and a positive association between smoking more than 21 pack-years and BC risk (HR = 2.09, $P = 0.04$). No significant variation in BC risk associated

GENEPSO Collaborating Centers are listed in [Appendix](#).

J. Lecarpentier · N. Andrieu (✉)
Institut National de la Santé et de la Recherche Médicale, Unité
U900, 26 rue d'Ulm, 75248 Paris Cedex 05, France
e-mail: nadine.andrieu@curie.net

J. Lecarpentier · N. Andrieu
Institut Curie, Centre de Recherche – Service de Biostatistiques,
26 rue d'Ulm, 75248 Paris Cedex 05, France

J. Lecarpentier · N. Andrieu
Ecole des Mines de Paris, Paris Tech, 77300 Fontainebleau,
France

C. Noguès · E. Mouret-Fourme
Institut Curie, Hôpital René Huguenin, 92210 Saint-Cloud,
France

D. Stoppa-Lyonnet
Institut National de la Santé et de la Recherche Médicale, Unité
U509, Service de Génétique Oncologique, Institut Curie,
Université Paris-Descartes, 26 rue d'Ulm, 75248 Paris, France

C. Lasset
Centre Léon Bérard, Département de Santé Publique, 28 rue
Laënnec, 69737 Lyon, France

O. Caron
Institut de Cancérologie Gustave Roussy, Service d'Oncologie
Génétique, 39 rue Camille Desmoulins, 94800 Villejuif, France

J.-P. Fricker
Centre Paul Strauss, Unité d'Oncologie, 3 rue Porte de l'Hopital,
67065 Strasbourg, France

L. Gladieff
Institut Claudius Regaud, Service d'Oncologie Médicale, 20–24
rue du Pont Saint Pierre, 31052 Toulouse, France

L. Faivre
Centre Georges Francois Leclerc, Oncogénétique and Hôpital
d'Enfants, Service de Génétique Médicale, 10 boulevard du Mal
de Lattre de Tassigny, 21079 Dijon, France

H. Sobol
Institut Paoli-Calmettes, Département d'Oncologie Génétique,
232 boulevard Ste Marguerite, 13273 Marseille, France

P. Gesta
C.H.R. Georges Renon, Pôle Oncologie, 40 avenue Charles de
Gaulle, 79021 Niort, France

with chest X-ray exposure, smoking, and alcohol consumption was found according to the location of the mutation in *BRCA1* and *BRCA2*. Our findings are consistent with those suggesting that the risk of BC is lower in the central regions of *BRCA1/2*. A new high-risk region in *BRCA2* is described. Taking into account environmental and lifestyle modifiers, the location of mutations might be important in the clinical management of *BRCA* mutation carriers.

Keywords Breast cancer · Risk factor · Genotype–phenotype correlation · *BRCA1* · *BRCA2* · Interaction

Introduction

Carriers of mutations in the *BRCA1* and *BRCA2* genes are at very high risk of developing breast cancer (BC) and ovarian cancer. Estimates of the lifetime risk of developing BC for *BRCA1* and *BRCA2* mutation carriers range, respectively, from 30 to 80% and from 9 to 84% [1]. Incomplete penetrance and the range of these risk estimates suggest the existence within families of genetic or shared environmental or lifestyle factors that modify the risk of BC.

Among studies that have attempted to identify environmental or lifestyle modifiers of *BRCA1* or *BRCA2*, few have examined smoking, alcohol consumption, or history of chest X-ray exposure, and they have often reached different conclusions, showing an overall lack of consistency. The effect of alcohol among *BRCA1/2* carriers has been investigated in only two studies [2, 3]. Studies on the effect of smoking on BC in *BRCA* mutation carriers have also yielded different results [4–10]. Among studies of the effect of exposure to low-dose radiation during mammography or chest X-ray [11–15], two show a significantly increased risk of BC [11, 12]. These inconsistencies between the studies may be due to heterogeneity in BC risk

associated with environmental factors according to the location of the mutation in the gene. Genotype-phenotype correlations have been described in both *BRCA1* and *BRCA2* (e.g. [16–19]). In *BRCA1*, the risk of BC has been reported to increase from the 5' to 3' regions [20, 21] and to be lower in the central region [18]. In *BRCA2*, most studies have reported a central region named OCCR (for “ovarian cancer cluster region”) where the risk of BC is decreased compared with outside this region [17, 20, 22, 23]. Therefore, we first studied the effect of mutation position on the risk of BC and identified homogeneous regions. Then for homogeneous BC risk regions, we studied the effects of smoking, alcohol consumption, and history of chest X-ray exposure on the risk of BC.

Materials and methods

Data

The GENEPSO study was initiated to estimate the risk of breast, ovarian, and other cancers in *BRCA1/2* mutation carriers and to assess potential risk-modifying factors. Subjects were ascertained from the family cancer clinics of the Genetic and Cancer Group of the Fédération Nationale des Centres de Lutte Contre le Cancer. Any woman who was known to carry a deleterious mutation in the *BRCA* genes was eligible, including those who had been diagnosed with cancer, as well as those who were currently unaffected. They had to be at least 18 years old, mentally capable of giving informed consent to study participation, and had been counseled about their mutation status. The research protocol was approved by the relevant ethics committees, and all participants provided written informed consent.

The study population was based on the women enrolled into the GENEPSO study from 2000 to 2010. A total of 1,337 women were recruited, 863 (65%) were *BRCA1* mutation carriers, and 474 (35%) were *BRCA2* mutation carriers. To assess variation in BC risk according to mutation position, a sample with one subject per family was randomly selected to avoid overmatching on the mutation.

A standardized questionnaire on reproductive factors, lifestyle factors, and history of chest X-ray exposure was administered to the study subjects by mail. Tobacco history was assessed first as past, current, or never use. For subjects who ever smoke, information on age when starting (and when stopping for past smokers), the number of cigarettes, and total duration of smoking was required. Alcohol consumption was also first assessed as ever or never use. Detailed information was recorded on the number of glasses per week, categorized as 0, 1–5, 6–10, and more

M. Frenay
Centre Antoine Lacassagne, Unité d'Oncogénétique, 33 avenue
de Valombrose, Nice 06189, France

E. Luporsi
Centre Alexis Vautrin, 6 avenue de Bourgogne, 54511
Vandœuvre-les-Nancy, France

I. Coupier
Hopital Arnaud de Villeneuve, CHU Montpellier, Service de
Génétique médicale et Oncogénétique, 371 ave du Doyen Gaston
Giraud, 34295 Montpellier, France

R. Lidereau
Institut National de la Santé et de la Recherche Médicale, Unité
U735 and Laboratoire d'Oncogénétique, Hôpital René
Huguenin, Saint-Cloud, France

than 10 at the age of 20 and at the interview. Exposure to chest X-rays (excluding mammograms) was first assessed as ever or never exposed. For subjects who reported at least one exposure, more specific information was requested relating to the number of X-ray exposures before and after age 20 (0, 1–4, or ≥ 5 X-rays in each of the two age periods). These two variables were combined to create a measure related to age at first exposure (before or after age 20) and another measure related to level of X-ray exposure (only one period with ≤ 4 X-rays and no period with ≥ 5 X-rays; two periods with 1–4 X-rays; one or two periods with ≥ 5 X-rays).

Genotyping

The mutation screening strategy was similar across the clinics, i.e., the youngest living affected family member was tested first and, if a *BRCA1/2* mutation was found, affected and unaffected family members were offered testing.

The full coding sequences and the exon–intron junctions of the *BRCA* genes were screened for variants, based on pre-screening (DGGE, SSCP, PTA, dHPLC, HRM or EMMA) and sequencing. Several large rearrangements were identified by large cDNA sequencing, MLPA [24], QMPFS [25], qPCR [26], qPCR HRM [27], EMMA [28], bar code screening [29], or dedicated array CGH [30]. Mutation description was provided by each French laboratory, coded, and standardized according to the international nomenclature.

Statistical methods

The data presented here were analyzed using a modified Cox proportional hazards regression model. Standard Cox regression may lead to biased estimates of the hazard ratio (HR) because the women in this study were taken from high-risk families qualifying for genetic testing. The disease status may therefore have affected the likelihood of ascertainment and the selection leading to an over-sampling of affected women. To correct for this bias, the Cox regression analyses were performed using the weighted regression approach described by Antoniou et al. [31]. Individuals were weighted such that the observed BC incidence rates in the study sample were consistent with established BC risk estimates for *BRCA1* and *BRCA2* carriers [1]. The affected mutation carriers were underweighted (weights < 1), and the unaffected mutation carriers were overweighted (weights > 1). The weights were applied to all person-years of each subject in the modified Cox model.

Subjects were followed up from birth and censored for women who were affected by any cancer at the date of diagnosis, or the date of prophylactic bilateral mastectomy or interview for unaffected women.

Deleterious mutations were classified in two classes: nonsense mutation and other type (i.e., missense mutations, in-phase skipping, partial, or entire gene deletions).

To assess variation in BC risk according to the location of nonsense mutations, *BRCA1* and *BRCA2* were divided into 20 codon regions of variable length corresponding to the 20-quantiles of the distribution of the mutation position among unaffected women. The HR was then estimated for each region, and contiguous regions with similar HR point estimates were combined to determine homogeneous regions in BC risk, and 95% confidence intervals were calculated. To avoid tests biased by the step-by-step inference process that we used to identify homogeneous regions, we performed permutation analyses to estimate the *P* value. 10,000 samples were simulated under the null hypothesis of no variation in BC risk according to nonsense mutation position. The HRs associated with regions defined as homogeneous were calculated in the 10,000 samples. The *P* value equals the proportion of HRs estimated from simulated samples which were equal to or less probable than the observed HR.

Tobacco use changed over time, so it was analyzed as a time-dependent covariate. All analyses were stratified by the year of birth (before 1940, 1940–1949, 1950–1959, 1960 or later). In addition, because parity, menopausal status, BMI, and gene may substantially modify the risk of BC and thus may be potential confounders, analyses were adjusted for menopausal status (yes/no) and parity (0, 1, 2, 3, ≥ 4) both time-dependent variables; BMI (< 18.5 , 18.5–25, > 25); and gene (*BRCA1* or *BRCA2*). Because alcohol and tobacco consumption are strongly associated, analyses of their effects were carried out separately: (1) for never-smokers and ever-smokers when the effect of alcohol use was assessed; and (2) for alcohol drinkers and non-drinkers when smoking effect was assessed.

All statistical analyses were two-sided and were performed using the STATA statistical package (version 10; Stata Corporation, College Station TX).

Results

Characteristics of the whole cohort and of one-woman-per-family cohorts are listed in Table 1. A total of 563 women had been diagnosed with BC at the time of their interview; however, only 499 of these women were considered as affected in this analysis after censoring. The remaining 838 women were censored at age, at diagnosis of ovarian cancer ($N = 89$), at diagnosis of another cancer ($N = 16$), at prophylactic bilateral mastectomy ($N = 11$), or at interview ($N = 722$). The average age at censoring for the 838 participants without BC was 40.0 years (SD = 10.8),

Table 1 Characteristics of the cohort study of *BRCA1/2* mutation carriers

Characteristics	Whole cohort						One woman per family					
	All women (<i>N</i> = 1337)		With BC (<i>N</i> = 499)		Without BC (<i>N</i> = 838)		All women (<i>N</i> = 990)		With BC (<i>N</i> = 379)		Without BC (<i>N</i> = 611)	
	No	%	No	%	No	%	No	%	No	%	No	%
Gene mutated												
<i>BRCA1</i>	863	64.6	332	66.5	531	63.4	635	64.1	240	63.3	395	64.7
<i>BRCA2</i>	474	35.5	167	33.5	307	36.6	355	35.9	139	36.7	216	35.4
Age at interview, years												
Mean	44.1		49.4		41.0		43.7		48.6		40.7	
SD	12.7		10.8		12.7		12.3		10.5		12.3	
Age at diagnosis/censoring, years												
Mean	40.4		41.0		40.0		40.1		40.4		39.8	
SD	10.8		8.80		10.8		10.5		8.80		11.5	
<30	196	14.7	34	6.80	162	19.3	142	14.3	29	7.70	113	18.5
30–39	487	36.4	205	41.1	282	33.7	371	37.5	159	42.0	212	34.7
40–49	403	30.1	176	35.3	227	27.1	306	30.9	133	35.1	173	28.3
50–59	180	13.5	67	13.4	113	13.5	126	12.7	47	12.4	79	12.9
≥60	71	5.30	17	3.40	54	6.40	45	4.60	11	2.90	34	5.60
Year of birth												
<1950	354	26.5	201	40.3	153	18.3	237	23.9	139	36.7	98	16.0
1950–1960	324	24.2	165	33.1	159	19.0	248	25.1	128	33.8	120	19.6
1960–1970	351	26.3	119	23.9	232	27.7	282	28.5	99	26.1	183	30.0
≥1970	308	23.0	14	2.80	294	35.1	223	22.5	13	3.40	210	34.4
Consumption of tobacco												
Never	693	51.8	262	52.5	431	51.4	507	51.2	194	51.2	313	51.2
Ever	642	48.0	236	47.3	406	48.5	481	48.6	184	48.6	297	48.6
Missing	2	0.20	1	0.20	1	0.10	2	0.20	1	0.30	1	0.20
Consumption of alcohol												
Never	352	26.3	117	23.5	235	28.0	259	26.2	90	23.8	169	27.7
Ever	984	73.6	382	76.6	602	71.8	730	73.7	289	76.3	441	72.2
Missing	1	0.10	0	0.00	1	0.10	1	0.10	0	0.00	1	0.20
Chest X-ray exposure												
Never exposed	187	14.0	14	2.80	173	20.6	139	14.0	10	2.60	129	21.1
≥1 X-ray	1,121	83.8	481	96.4	640	76.4	826	83.4	365	96.3	461	75.5
Missing	29	2.20	4	0.80	25	3.00	25	2.50	4	1.10	21	3.40

which is similar to the age at diagnosis of the women with BC (41.0 years, SD = 8.8), although the age at interview was substantially greater for the BC patients, reflecting the pattern of genetic testing among participants. Sampling of one woman per family did not change any characteristic distribution or the average of age at censoring (40.4 years, SD = 8.8 and 39.8 years, SD = 11.5, respectively, for women with and without BC). Year of birth, consumption of tobacco and alcohol, and chest X-ray exposure are also described. There were a total of 39,666 person-years of observation.

Variation of BC risk according to mutation type and location in *BRCA1* and *BRCA2* is shown in Table 2. First,

classification of mutations as nonsense or other showed that there was no significant difference in BC risk for either *BRCA1* (HR = 1.06, 95% CI = 0.68–1.66) or *BRCA2* (HR = 0.49, 95% CI = 0.18–1.29), even though the point estimate showed a 50% decrease in BC risk. The distribution of the nonsense mutations is shown in Figs. 1 and 2 for *BRCA1* and *BRCA2* carriers, respectively. To assess variation in BC risk according to the position of the nonsense mutations, we partitioned *BRCA1* and *BRCA2* according to the 20-quantiles of the distribution of mutation positions among unaffected women, and this led to regions of varying length (mean length = 101 codons and 165 codons for *BRCA1* and *BRCA2*, respectively). Three

Table 2 Variation of BC risk according to the type and location of the mutation in *BRCA1* and *BRCA2*

	Person-years	Without BC	With BC	HR	95% CI	P
<i>BRCA1</i>						
Mutation type						
Nonsense	22,057	353	209	1.00		
Other type	2,988	42	31	1.06	0.68–1.66	ns
Nonsense mutation location, codon						
0–373	4,327	71	43	1.00		
374–1161 (LR1)	5,367	89	43	0.59	0.36–0.97	0.04
1162–1851	12,363	193	123	0.87	0.58–1.30	ns
<i>BRCA2</i>						
Mutation type						
Nonsense	13,493	198	131	1.00		
Other type	1,128	18	8	0.49	0.18–1.29	ns
Nonsense mutation location, codon						
0–956	3,957	60	39	1.00		
957–1827 (LR2)	2,281	43	11	0.35	0.15–0.80	0.005
1828–2545	4,642	66	45	0.96	0.53–1.73	ns
2546–2968 (HR2)	1,137	10	19	3.56	1.49–8.50	0.01
2969–3418	1,476	19	17	1.49	0.70–3.19	ns

HR hazard ratio; CI confidence interval

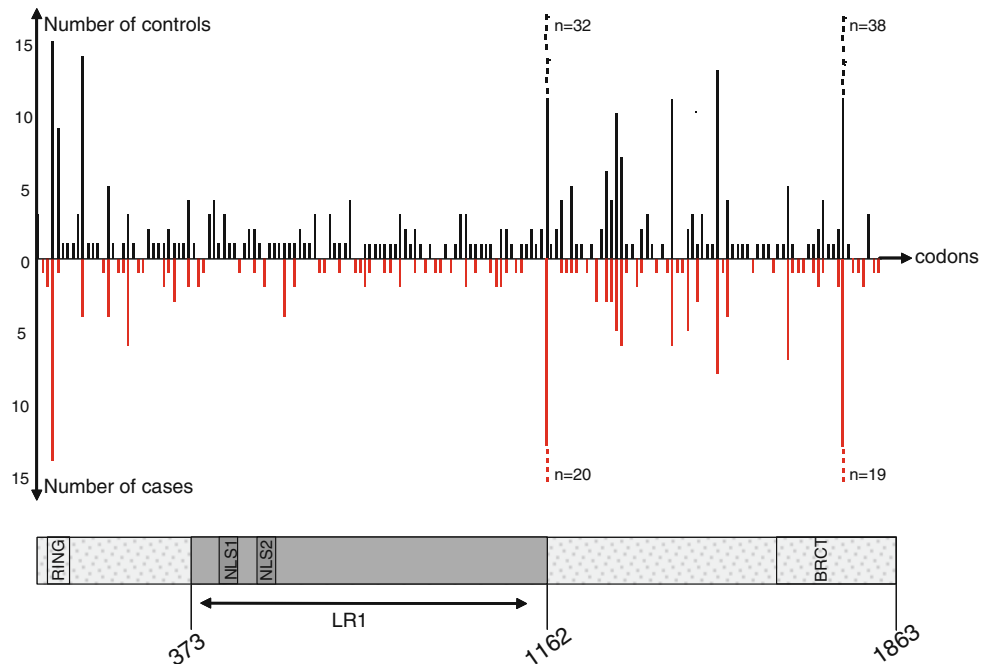


Fig. 1 Distribution of *BRCA1* mutations among the study subjects. *Ring* ring finger domain; *NLS* Nuclear Localization Signal; *BRCT* *BRCA1* C-terminal domain; *LR1* lower risk region in *BRCA1*. ■ Controls; ■ Cases

regions homogeneous in BC risk were determined in *BRCA1* and four in *BRCA2*. In *BRCA1*, mutations between codons 374 and 1161 (LR1 for “lower risk region in *BRCA1*”) were associated with a significant decrease in the

risk of BC (HR = 0.59, 95% CI = 0.36–0.97, $P = 0.04$) as compared with mutations located before codon 373. The third homogeneous region located from codon 1161 to the end was associated with a nonsignificant HR equal to 0.87

Fig. 2 Distribution of *BRCA2* mutations among the study subjects. *TAD* Transcription activation domain; *BRC* eight ~35 amino acid motifs repeats; *OB* oligonucleotide-binding folds; *NLS* Nuclear Localization Signal; *DSS1* deleted in split hand/split foot protein 1; *LR2* lower risk region in *BRCA2*; *HR2* higher risk region in *BRCA2*. ■ Controls; ■ Cases

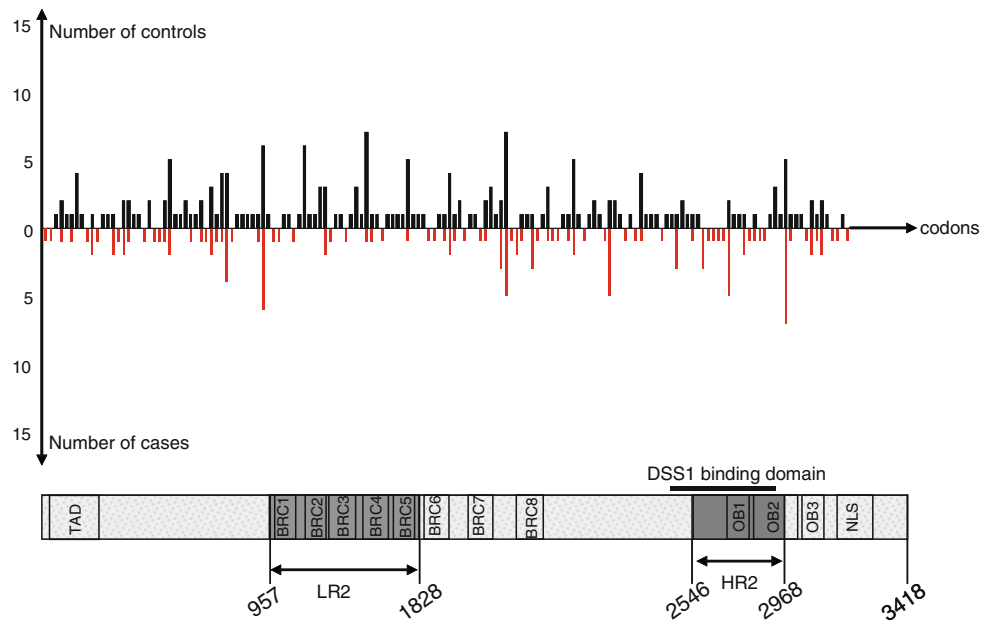


Table 3 Variation of BC risk according to chest X-ray exposure

	No. of person-years ^a	No. of cases ^a	HR	95% CI	<i>P</i> value
X-ray exposure ^b					
Never exposed	4,726	10	1.00		
≥1 X-ray	33,670	365	4.29	2.09–8.81	<10 ⁻³
Age at 1st X-ray exposure ^b					
Never exposed	4,726	10	1.00		
Before age 20 years	30,979	331	4.16	2.03–8.56	<10 ⁻³
After age 20 years	2,691	34	6.45	2.86–14.6	<10 ⁻³
Level of X-ray exposure ^b					
Never exposed	4,726	10	1.00		
Only one period with 1–4 X-rays	1,520	12	4.83	1.83–12.8	<10 ⁻³
Two periods with 1–4 X-rays	20,348	276	6.22	2.94–13.1	<10 ⁻³
At least one period with 5 + X-rays	9,139	62	2.80	1.30–6.05	0.01

HR hazard ratio; *CI* confidence interval

^a Not including missing data

^b Adjusted for parity, menopausal status, and gene

(95% CI = 0.58–1.30). Among *BRCA2* mutation carriers, mutations between codons 957 and 1827 (LR2 for “lower risk region in *BRCA2*”) were associated with a significant decrease in the risk of BC (HR = 0.35, 95% CI = 0.15–0.80, *P* = 0.005), whereas mutations between codons 2546 and 2968 (HR2 for “higher risk region in *BRCA2*”) were associated with a significantly increased BC risk (HR = 3.56, 95% CI = 1.49–8.50, *P* = 0.01), as compared with mutations located before codon 956.

The estimated risks of BC associated with chest X-ray exposure (excluding mammograms), tobacco consumption, and alcohol consumption are summarized in Tables 3, 4, 5, and 6.

Very few subjects, particularly those with BC, had never been exposed to chest X-ray at censor (2.8% of cases). Overall, any exposure to chest X-ray was associated with a significantly increased risk of BC (HR = 4.29, 95% CI = 2.09–8.81) (cf. Table 3). Chest X-ray exposure was significantly associated with an increased risk of BC whenever the first exposure was before or after age 20 and whatever the level of exposure. No difference was found when stratified by gene. Exposure to chest X-ray was associated with a significantly increased risk of BC among *BRCA1* carriers (HR = 4.12, 95% CI = 1.82–9.35) and among *BRCA2* carriers (HR = 5.43, 95% CI = 1.36–21.7) (data not shown).

Table 4 Variation of BC risk according to alcohol and tobacco consumption

	Never user of alcohol					Ever user of alcohol				
	Person-years ^a	No. of cases ^a	HR	95% CI	<i>P</i> value	Person-years ^a	No. of cases ^a	HR	95% CI	<i>P</i> value
Tobacco consumption ^b										
Never use	8,742	62	1.00			20,863	139	1.00		
Current use	1,037	18	2.09	1.04–4.19	0.04	5,630	85	0.97	0.66–1.44	ns
Past use	334	9	0.74	0.31–1.79	ns	1,917	61	1.21	0.83–1.77	ns
Pack-years ^b										
0–5	9,192	64	1.00			23,423	158	1.00		
6–20	846	17	1.03	0.52–2.05	ns	4,276	87	1.16	0.83–1.63	ns
≥21	67	8	3.21	1.24–8.31	0.02	689	40	1.13	0.68–1.86	ns
Time since last use ^b										
Never stopped	1,037	18	1.00			5,630	85	1.00		
≤10 years	230	8	0.70	0.23–2.14	ns	1,236	33	1.35	0.80–2.29	ns
>10 years	104	1	0.12	0.02–0.77	0.03	681	28	1.15	0.67–1.98	ns
Never used	8,742	62	0.48	0.24–0.96	0.04	20,863	139	1.02	0.69–1.51	ns
Alcohol consumption ^b										
Never smoker										
Ever smoker										
Alcohol consumption at age 20 years (glasses/week) ^b										
Never use	18,579	137	1.00			4,306	93	1.00		
1–5	5,246	29	0.82	0.50–1.34	ns	1,837	29	0.74	0.44–1.26	ns
6–10	4,164	24	1.02	0.56–1.87	ns	1,832	36	1.18	0.72–1.93	ns
>10	1,235	9	1.26	0.53–2.96	ns	669	12	0.89	0.40–1.96	ns

HR hazard ratio; CI confidence interval

^a Not including missing data

^b Adjusted for parity, menopausal status, gene, and number of years of smoking interruption

Because of a borderline negative interaction between the alcohol and tobacco consumption ($P = 0.058$), analyses were performed stratified by tobacco use when alcohol consumption effect was assessed and vice versa (Table 4). Among alcohol drinkers, none of the HRs associated with tobacco is significantly different from unity. Inversely, among those who have never drunk alcohol, a significantly increased risk of BC was found among current smokers (HR = 2.09, 95% CI = 1.04–4.19), with a maximum risk among those who smoked more than 21 pack-years (HR = 3.21, 95% CI = 1.24–8.31); among past smokers, a significant decrease in risk of BC was found for those who had stopped smoking more than 10 years before (HR = 0.12, 95% CI = 0.02–0.77). For alcohol consumption, there was no increased risk of BC among current smokers, past smokers, or never smokers. When stratified by gene, results for alcohol and tobacco consumption for *BRCA1* carriers were similar to those found for *BRCA1* and *BRCA2* mutation carriers taken together (cf. Table 5).

Among *BRCA2* carriers, there was no significant interaction between alcohol and tobacco consumption ($P = 0.75$), so analyses of tobacco and alcohol use were not stratified (Table 6). Results for tobacco use led to an increase in BC risk similar to that found for *BRCA1* and *BRCA2* mutation carriers taken together. For alcohol use, the HR point estimates are higher than those found among *BRCA1* carriers (e.g., ever vs. never, HR = 1.21, 95% CI = 0.68–2.15) and equals 1.78 among those who consumed more than five glasses per week at age 20 (95% CI = 0.97–3.27, $P = 0.07$) (data not shown).

Estimated risks of BC associated with tobacco or alcohol consumption and chest X-ray exposure (excluding mammograms) according to the mutation location were assessed by the regions defined as homogeneous. As described above, analyses by mutation location were performed stratified by tobacco use when alcohol consumption effect was assessed and vice versa for *BRCA1*, and not stratified for *BRCA2*.

Table 5 Variation of BC risk according to alcohol and tobacco consumption in *BRCA1* carriers

	Never user of alcohol					Ever user of alcohol				
	Person-years ^a	No. of cases ^a	HR	95% CI	<i>P</i> value	Person-years ^a	No. of cases ^a	HR	95% CI	<i>P</i> value
Tobacco consumption ^b										
Never use	5,136	38	1.00			13,562	92	1.00		
Current use	702	13	2.09	0.94–4.65	0.07	3,523	48	0.87	0.52–1.43	ns
Past use	240	5	0.56	0.19–1.62	ns	1,165	41	1.25	0.81–1.93	ns
Pack-years ^b										
0–5	5,453	40	1.00			15,116	103	1.00		
6–20	586	11	0.84	0.38–1.87	ns	2,711	60	1.23	0.83–1.82	ns
≥21	39	5	3.29	1.09–9.95	0.04	401	18	0.87	0.45–1.68	ns
Time since last use ^b										
Never stopped	702	13	1.00			3,523	48	1.00		
≤10 years	166	4	0.44	0.10–1.89	ns	773	25	1.64	0.87–3.10	ns
>10 years	74	1	0.13	0.02–0.80	0.03	392	16	1.26	0.64–2.46	ns
Never smoked	5,136	38	0.47	0.21–1.06	0.07	13,562	92	1.15	0.70–1.90	ns
	Never smoker					Ever smoker				
	Person-years ^a	No. of cases ^a	HR	95% CI	<i>P</i> value	Person-years ^a	No. of cases ^a	HR	95% CI	<i>P</i> value
Alcohol consumption ^b										
Never use	5,136	38	1.00			942	18	1.00		
Current use	13,562	92	1.02	0.65–1.60	ns	4,688	89	0.90	0.49–1.68	ns
Alcohol consumption at age 20 years (glasses/week) ^b										
Never use	11,560	86	1.00			2,906	63	1.00		
1–5	3,364	21	0.79	0.43–1.46	ns	1,029	16	0.70	0.35–1.38	ns
6–10	2,677	16	0.89	0.44–1.80	ns	1,032	19	1.10	0.59–2.03	ns
>10	866	6	1.16	0.42–3.19	ns	464	7	0.78	0.31–1.96	ns

HR hazard ratio; CI confidence interval

^a Not including missing data

^b Adjusted for parity, menopausal status, gene, and number of years of smoking interruption

Among *BRCA1* mutation carriers, the number of mutation carriers in LR1 was too small to assess the effect of tobacco and alcohol consumption. The BC risk associated with chest X-ray exposure did not significantly differ between LR1 (HR = 3.75, 95% CI = 1.28–11.0) and outside LR1 (HR = 2.39, 95% CI = 0.67–8.48).

Among *BRCA2* mutation carriers, the number of subjects with a mutation in LR2 and HR2 was also too small to analyze variation in the effect of chest X-ray exposure, and in particular there were almost no unexposed subjects per region of interest. However, for consumption of alcohol and tobacco, despite the small number of subjects, HR point estimates seemed different between regions. Ever versus never smoking was associated with a HR point estimate greater than unity, albeit not significantly, in LR2 (LR2: HR = 2.84, 95% CI = 0.61–13.3; HR2: HR = 0.67, 95% CI = 0.17–2.56; reference region: HR = 1.12, 95% CI = 0.62–2.01; $P_{\text{heterogeneity}}$ = ns). For alcohol consumption, a HR point estimate greater than unity was found only in the reference zone (reference zone:

HR = 1.82, 95% CI = 0.95–3.48; LR2: HR = 0.38, 95% CI = 0.07–1.90; HR2: HR = 0.28, 95% CI = 0.05–1.44; $P_{\text{heterogeneity}}$ = ns) (data not shown).

Discussion

Our results confirm the existence of a central low BC risk region in *BRCA1* (LR1) and one in *BRCA2* (LR2), the latter located in the same area as the OCCR region described previously [16–18, 23]. In addition, a new high BC risk region (HR2) is found in the 3' region of *BRCA2* between the codons 2546 and 2968. No significant variation in BC risk associated with chest X-ray exposure is found according to the location of the mutation. Although not statistically significant, point estimates suggest a possible variation in BC risk associated with alcohol and tobacco consumption according to the location of the mutation in *BRCA2*.

Since our data used prevalent cases with some women being interviewed a long time after their BC diagnosis, we

Table 6 Variation of BC risk according to alcohol and tobacco consumption in *BRCA2* carriers

	Person-years ^a	No. of cases ^a	HR	95% CI	<i>P</i> value
Tobacco consumption ^b					
Never use	10,907	71	1.00		
Current use	2,442	42	1.39	0.73–2.63	ns
Past use	846	24	1.18	0.60–2.33	ns
Pack-years ^b					
0–5	12,046	79	1.00		
6–20	1,825	33	1.07	0.58–1.98	ns
≥21	316	25	2.25	1.05–4.82	0.04
Time since last use ^b					
Never stopped	2,442	42	1.00		
≤10 years	527	12	0.84	0.37–1.90	ns
>10 years	319	12	0.71	0.30–1.70	ns
Never smoked	10,907	71	0.65	0.37–1.14	ns
Alcohol consumption ^c					
Never use	4,035	33	1.00		
Current use	10,447	106	1.21	0.68–2.15	ns
Alcohol consumption at age 20 years (glasses/week) ^c					
Never use	8,510	81	1.00		
1–5	2,854	23	0.87	0.47–1.60	ns
6–10	2,319	25	1.85	0.89–3.86	ns
>10	574	8	1.64	0.66–4.02	ns

HR hazard ratio; CI confidence interval

^a Not including missing data

^b Adjusted for parity, menopausal status, gene, number of years of smoking interruption and alcohol use

^c Adjusted for parity, menopausal status, gene, smoking and number of years of smoking interruption

cannot exclude that our findings on mutation position, chest X-ray exposure, and tobacco and alcohol consumption are affected by a potential survival bias. The negative interaction between tobacco and alcohol use found in our data could be due to such survival bias [32–36]. However, we could not detect it in our data by performing extra analyses on subsamples of individuals diagnosed or censured within the 5-year period before or at their interview, with a follow-up being counted only for this period. We do not observe differences in our results using this pseudo-incident cohort.

The locations of low or high BC risk regions in *BRCA1* and *BRCA2* differ a little from those previously published [17, 18, 20–23]. We may have missed other variations in BC risk along the genes because of our a priori cut-point which may not be fine enough. However, our a priori number of quantiles was dictated by sample size limitation. We can not exclude that these variations may be due to confounders like modifiers (either genetic or environmental) resulting in a strong family history of BC or of ovarian cancer. Unfortunately, the pedigree data were not available in this study. Our approach though allows us to describe a new region of high BC risk in *BRCA2* in the C-terminal region. HR2,

which corresponds to the longest conserved region in the *BRCA2* protein [37], is of major importance for the *BRCA2* protein stability because of DSS1 (for “deleted in split hand/split foot protein 1”) protein binding region [38]. The strong physical interaction between DSS1 and *BRCA2* seems to be crucial for *BRCA2* function in DNA double-strand break repair. It has been postulated that DSS1 may regulate the accessibility of the DNA binding sites on *BRCA2* [38]. Therefore, a mutation in that region with even partial conservation may lead to a truncated but potentially stable protein. This stable truncated protein might have a dominant negative effect on the wild-type protein.

Our results on the effect of exposure to low-dose radiation due to chest X-ray are consistent with two [11, 12] of the five studies [11–15] where a significantly increased risk of BC was found.

The limitations in interpreting our results are as discussed in Andrieu et al. [12], since the study design and methodology are the same. In spite of the fact that our findings and the data set of Andrieu et al. overlap for 319 subjects and thus HRs are not independent, the BC risk associated with chest X-ray exposure in our report is about 2.5 times higher than that given by Andrieu et al. [12]

(HR = 1.56, 95% CI = 1.00–2.40). This difference may be due to the fact that our study subjects were more often exposed to chest X-ray (at least one period ≥ 5 X-rays: 57 vs. 45% in Andrieu et al.) and more often exposed before age 20 (81 vs. 59% in Andrieu et al.). In addition, the risk of BC associated with chest X-rays exposure in GENEPSO *BRCA1/2* mutation carriers is about 3 fold higher than in the general population (e.g. in women under age 50 years, HR = 2.1 when nine or more chest X-rays exposures [39]). More detailed information on level and on age at exposure is needed to specify the risk of BC associated with chest X-ray exposure in the French population of *BRCA1/2* mutation carriers, a population which appears to be particularly exposed.

Unlike in the general population [40], and in accordance with the two studies on *BRCA1/2* mutation carriers [2, 3], our findings do not support a positive association between alcohol intake and BC risk. Although there is no obvious hypothesis to observe an association between alcohol intake and BC risk limited to some mutation positions, our findings suggest such an association for mutations located outside LR2 or HR2. Nevertheless, this observation may be due to chance and should first be replicated in other and larger data sets.

Unlike in the general population, where no consistency in association between smoking and BC risk was found (e.g. [40]), we found a twofold increased risk of BC among those who do not drink alcohol. Studies that have examined the effect of smoking on BC in *BRCA* mutation carriers gave different results. Some reported a null association [4–7], two reported a protective association [8, 9], and two reported a positive association [5, 10], only among *BRCA1* carriers with a past history of smoking in Ginsburg et al. [5]. Boyd et al. [10] have suggested that using prevalent cases may have biased results toward a null association or even toward a protective association if women who smoke are more likely to die after a diagnosis of BC than women with BC who do not smoke. An association between smoking and BC risk among *BRCA1/2* mutation carriers is supported by our findings. We found that BC risk increases in subjects smoking more than 21 pack-years and decreases as time since last use increases. Moreover, because of the importance of *BRCA1* and *BRCA2* in DNA repair, *BRCA1/2* mutation carriers may be more sensitive to carcinogens contained in cigarette smoke than the general population.

Conclusions

This study describes a new region in *BRCA2* with a potential high risk of BC. The identification of this region may have implications for the clinical management of *BRCA2* mutation carriers. This study also indicates an important

association between the radiation exposure from chest X-rays and BC risk in French *BRCA1/2* mutation carriers that is of greater magnitude than the association seen in the general population and in other *BRCA1/2* mutation carrier populations. These results have implications regarding the appropriate use of medical imaging in carriers. Furthermore, our findings point to a positive association between the tobacco use and BC risk. If confirmed, these results would provide a practical way for carriers to reduce their risk. This is the first time that the effects of chest X-ray, alcohol use, and tobacco use have been assessed according to the location of the mutation. The power to detect differential effects according to region was low, but may generate hypotheses to be tested on other datasets. Taking into account environmental and lifestyle modifiers, mutation position might be important for the clinical management of *BRCA* carriers and may be helpful in understanding the biology of *BRCA1* and *BRCA2* in BC etiology.

Acknowledgments This GENEPSO study is supported by the Fondation de France and the Ligue Nationale Contre le Cancer. The authors thank Marie-Lise Manche-Thévenot, Claude Picard, and Irwin Piot (hôpital René Huguenin, Saint Cloud, France) who provided technical assistance.

Appendix

GENEPSO Collaborating Centers

Coordinating Center, Hôpital René Huguenin/Institut Curie, Saint Cloud: Catherine Noguès, Emmanuelle Fourme, Rosette Lidereau; Etienne Rouleau, Sandrine Caputo.

Collaborating Centers: Institut Curie, Paris: Dominique Stoppa-Lyonnet, Marion Gauthier-Villars; Bruno Buecher, Institut Gustave Roussy, Villejuif: Olivier Caron; Hôpital René Huguenin/Institut Curie, Saint Cloud: Catherine Noguès, Liliane Demange; Centre Paul Strauss, Strasbourg: Jean-Pierre Fricker; Centre Léon Bérard, Lyon: Christine Lasset, Valérie Bonadona; Centre François Baclesse, Caen: Pascaline Berthet; Hôpital d'Enfants CHU Dijon – Centre Georges François Leclerc, Dijon: Laurence Faivre; Centre Alexis Vautrin, Vandoeuvre-les-Nancy: Elisabeth Luporsi; Centre Antoine Lacassagne, Nice: Marc Fréney; Institut Claudius Regaud, Toulouse: Laurence Gladiéff; Réseau Oncogénétique Poitou Charente, Niort: Paul Gesta; Institut Paoli-Calmettes, Marseille: Hagay Sobol, François Eisinger, Laetitia Huiart; Institut Bergonié, Bordeaux: Michel Longy; Centre Eugène Marquis, Rennes: Catherine Dugast; GH Pitié Salpêtrière, Paris: Chrystelle Colas, Florent Soubrier; CHU Arnaud de Villeneuve, Montpellier: Isabelle Coupier, Pascal Pujol; Centres Paul Papin, and Catherine de Sienne, Angers, Nantes: Alain Lortholary; Centre Oscar Lambret, Lille: Philippe Vennin,

Claude Adenis; Institut Jean Godinot, Reims: Tan Dat Nguyen; Centre René Gauducheau, Nantes: Capucine Delnatte; Centre Henri Becquerel, Rouen: Annick Rossi, Julie Tinat, Isabelle Tennevet; Hôpital Civil, Strasbourg: Jean-Marc Limacher, Christine Maugard; Hôpital Centre Jean Perrin, Clermont-Ferrand: Yves-Jean Bignon; Poly-clinique Courlancy, Reims: Liliane Demange; Clinique Sainte Catherine, Avignon: Hélène Dreyfus; Hôpital Saint-Louis, Paris: Odile Cohen-Haguenaer; CHRU Dupuytren, Limoges: Brigitte Gilbert; Couple-Enfant-CHU de Grenoble: Dominique Leroux; Hôpital de la Timone, Marseille: Hélène Zattara-Cannoni; Inserm U900, Ecole des Mines de Paris, ParisTech, Service de Biostatistiques, Institut Curie, Paris: Nadine Andrieu; Inserm U535, Villejuif: Catherine Bonaïti; Inserm U379, Marseille: Claire Julian-Reynier.

References

- Antoniou A, Pharoah PD, Narod S, Risch HA, Eyfjord JE, Hopper JL, Loman N, Olsson H, Johannsson O, Borg A, Pasini B, Radice P, Manoukian S, Eccles DM, Tang N, Olah E, Anton-Culver H, Warner E, Lubinski J, Gronwald J, Gorski B, Tulinius H, Thorlacius S, Eerola H, Nevanlinna H, Syrjäkoski K, Kallioniemi OP, Thompson D, Evans C, Peto J, Lalloo F, Evans DG, Easton DF (2003) Average risks of breast and ovarian cancer associated with BRCA1 or BRCA2 mutations detected in case Series unselected for family history: a combined analysis of 22 studies. *Am J Hum Genet* 72:1117–1130
- McGuire V, John EM, Felberg A, Haile RW, Boyd NF, Thomas DC, Jenkins MA, Milne RL, Daly MB, Ward J, Terry MB, Andrulis IL, Knight JA, Godwin AK, Giles GG, Southey M, West DW, Hopper JL, Whittemore AS (2006) No increased risk of breast cancer associated with alcohol consumption among carriers of BRCA1 and BRCA2 mutations ages <50 years. *Cancer Epidemiol Biomarkers Prev* 15:1565–1567
- Moorman PG, Iversen ES, Marcom PK, Marks JR, Wang F, Lee E, Ursin G, Rebbeck TR, Domchek SM, Arun B, Susswein L, Isaacs C, Garber JE, Visvanathan K, Griffin CA, Sutphen R, Brzosowicz J, Gruber S, Finkelstein DM, Schildkraut JM (2010) Evaluation of established breast cancer risk factors as modifiers of BRCA1 or BRCA2: a multi-center case-only analysis. *Breast Cancer Res Treat* 124:441–451
- Ghadirian P, Lubinski J, Lynch H, Neuhausen SL, Weber B, Isaacs C, Baruch RG, Randall S, Ainsworth P, Friedman E, Horsman D, Tonin P, Foulkes WD, Tung N, Sun P, Narod SA (2004) Smoking and the risk of breast cancer among carriers of BRCA mutations. *Int J Cancer* 110:413–416
- Ginsburg O, Ghadirian P, Lubinski J, Cybulski C, Lynch H, Neuhausen S, Kim-Sing C, Robson M, Domchek S, Isaacs C, Klijn J, Armel S, Foulkes WD, Tung N, Moller P, Sun P, Narod SA (2009) Smoking and the risk of breast cancer in BRCA1 and BRCA2 carriers: an update. *Breast Cancer Res Treat* 114: 127–135
- Nkondjock A, Robidoux A, Paredes Y, Narod SA, Ghadirian P (2006) Diet, lifestyle and BRCA-related breast cancer risk among French-Canadians. *Breast Cancer Res Treat* 98:285–294
- Gronwald J, Byrski T, Huzarski T, Cybulski C, Sun P, Tulman A, Narod SA, Lubinski J (2006) Influence of selected lifestyle factors on breast and ovarian cancer risk in BRCA1 mutation carriers from Poland. *Breast Cancer Res Treat* 95:105–109
- Brunet JS, Ghadirian P, Rebbeck TR, Lerman C, Garber JE, Tonin PN, Abrahamson J, Foulkes WD, Daly M, Wagner-Costalas J, Godwin A, Olopade OI, Moslehi R, Liede A, Futreal PA, Weber BL, Lenoir GM, Lynch HT, Narod SA (1998) Effect of smoking on breast cancer in carriers of mutant BRCA1 or BRCA2 genes. *J Natl Cancer Inst* 90:761–766
- Colilla S, Kantoff PW, Neuhausen SL, Godwin AK, Daly MB, Narod SA, Garber JE, Lynch HT, Brown M, Weber BL, Rebbeck TR (2006) The joint effect of smoking and AIB1 on breast cancer risk in BRCA1 mutation carriers. *Carcinogenesis* 27:599–605
- Breast Cancer Family Registry; Kathleen Cunningham Consortium for Research into Familial Breast Cancer (Australasia); Ontario Cancer Genetics Network (Canada) (2008) Smoking and risk of breast cancer in carriers of mutations in BRCA1 or BRCA2 aged less than 50 years. *Breast Cancer Res Treat* 109:67–75
- Gronwald J, Pijpe A, Byrski T, Huzarski T, Stawicka M, Cybulski C, van Leeuwen F, Lubinski J, Narod SA (2008) Early radiation exposures and BRCA1-associated breast cancer in young women from Poland. *Breast Cancer Res Treat* 112:581–584
- Andrieu N, Easton DF, Chang-Claude J, Rookus MA, Brohet R, Cardis E, Antoniou AC, Wagner T, Simard J, Evans G, Peock S, Fricker JP, Nogues C, Van't Veer L, van Leeuwen FE, Goldgar DE (2006) Effect of chest X-rays on the risk of breast cancer among BRCA1/2 mutation carriers in the international BRCA1/2 carrier cohort study: a report from the EMBRACE, GENEPSO, GEO-HEBON, and IBCCS Collaborators' Group. *J Clin Oncol* 24:3361–3366
- Goldfrank D, Chuai S, Bernstein JL, Ramon YC, Lee JB, Alonso MC, Diez O, Baiget M, Kauff ND, Offit K, Robson M (2006) Effect of mammography on breast cancer risk in women with mutations in BRCA1 or BRCA2. *Cancer Epidemiol Biomarkers Prev* 15:2311–2313
- Narod SA, Lubinski J, Ghadirian P, Lynch HT, Moller P, Foulkes WD, Rosen B, Kim-Sing C, Isaacs C, Domchek S, Sun P (2006) Screening mammography and risk of breast cancer in BRCA1 and BRCA2 mutation carriers: a case-control study. *Lancet Oncol* 7:402–406
- Millikan RC, Player JS, Decotret AR, Tse CK, Keku T (2005) Polymorphisms in DNA repair genes, medical exposure to ionizing radiation, and breast cancer risk. *Cancer Epidemiol Biomarkers Prev* 14:2326–2334
- Gayther SA, Mangion J, Russell P, Seal S, Barfoot R, Ponder BA, Stratton MR, Easton D (1997) Variation of risks of breast and ovarian cancer associated with different germline mutations of the BRCA2 gene. *Nat Genet* 15:103–105
- Thompson D, Easton D (2001) Variation in cancer risks, by mutation position, in BRCA2 mutation carriers. *Am J Hum Genet* 68:410–419
- Thompson D, Easton D (2002) Variation in BRCA1 cancer risks by mutation position. *Cancer Epidemiol Biomarkers Prev* 11:329–336
- Lubinski J, Phelan CM, Ghadirian P, Lynch HT, Garber J, Weber B, Tung N, Horsman D, Isaacs C, Monteiro AN, Sun P, Narod SA (2004) Cancer variation associated with the position of the mutation in the BRCA2 gene. *Fam Cancer* 3:1–10
- Risch HA, McLaughlin JR, Cole DE, Rosen B, Bradley L, Kwan E, Jack E, Vesprini DJ, Kuperstein G, Abrahamson JL, Fan I, Wong B, Narod SA (2001) Prevalence and penetrance of germline BRCA1 and BRCA2 mutations in a population series of 649 women with ovarian cancer. *Am J Hum Genet* 68:700–710
- Risch HA, McLaughlin JR, Cole DE, Rosen B, Bradley L, Fan I, Tang J, Li S, Zhang S, Shaw PA, Narod SA (2006) Population

- BRCA1 and BRCA2 mutation frequencies and cancer penetrances: a kin-cohort study in Ontario, Canada. *J Natl Cancer Inst* 98:1694–1706
22. Evans DG, Shenton A, Woodward E, Lalloo F, Howell A, Maher ER (2008) Penetrance estimates for BRCA1 and BRCA2 based on genetic testing in a Clinical Cancer Genetics service setting: risks of breast/ovarian cancer quoted should reflect the cancer burden in the family. *BMC Cancer* 8:155
 23. Begg CB, Haile RW, Borg A, Malone KE, Concannon P, Thomas DC, Langholz B, Bernstein L, Olsen JH, Lynch CF, Anton-Culver H, Capanu M, Liang X, Hummer AJ, Sima C, Bernstein JL (2008) Variation of breast cancer risk among BRCA1/2 carriers. *JAMA* 299:194–201
 24. Schouten JP, McElgunn CJ, Waaijer R, Zwijnenburg D, Diepvens F, Pals G (2002) Relative quantification of 40 nucleic acid sequences by multiplex ligation-dependent probe amplification. *Nucleic Acids Res* 30:e57
 25. Casilli F, Di Rocco ZC, Gad S, Tournier I, Stoppa-Lyonnet D, Frebourg T, Tosi M (2002) Rapid detection of novel BRCA1 rearrangements in high-risk breast-ovarian cancer families using multiplex PCR of short fluorescent fragments. *Hum Mutat* 20:218–226
 26. Barrois M, Bieche I, Mazoyer S, Champeme MH, Bressac-de Paillerets B, Lidereau R (2004) Real-time PCR-based gene dosage assay for detecting BRCA1 rearrangements in breast-ovarian cancer families. *Clin Genet* 65:131–136
 27. Rouleau E, Lefol C, Bourdon V, Coulet F, Noguchi T, Soubrier F, Bieche I, Olschwang S, Sobol H, Lidereau R (2009) Quantitative PCR high-resolution melting (qPCR-HRM) curve analysis, a new approach to simultaneously screen point mutations and large rearrangements: application to MLH1 germline mutations in Lynch syndrome. *Hum Mutat* 30:867–875
 28. Weber J, Miserere S, Champ J, Looten R, Stoppa-Lyonnet D, Viovy JL, Houdayer C (2007) High-throughput simultaneous detection of point mutations and large-scale rearrangements by CE. *Electrophoresis* 28:4282–4288
 29. Gad S, Aurias A, Puget N, Mairal A, Schurra C, Montagna M, Pages S, Caux V, Mazoyer S, Bensimon A, Stoppa-Lyonnet D (2001) Color bar coding the BRCA1 gene on combed DNA: a useful strategy for detecting large gene rearrangements. *Genes Chromosomes Cancer* 31:75–84
 30. Rouleau E, Lefol C, Tozlu S, Andrieu C, Guy C, Copigny F, Nogues C, Bieche I, Lidereau R (2007) High-resolution oligonucleotide array-CGH applied to the detection and characterization of large rearrangements in the hereditary breast cancer gene BRCA1. *Clin Genet* 72:199–207
 31. Antoniou AC, Goldgar DE, Andrieu N, Chang-Claude J, Brohet R, Rookus MA, Easton DF (2005) A weighted cohort approach for analysing factors modifying disease risks in carriers of high-risk susceptibility genes. *Genet Epidemiol* 29:1–11
 32. Dal Maso L, Zucchetto A, Talamini R, Serraino D, Stocco CF, Vercelli M, Falcini F, Franceschi S (2008) Effect of obesity and other lifestyle factors on mortality in women with breast cancer. *Int J Cancer* 123:2188–2194
 33. Hellmann SS, Thygesen LC, Tolstrup JS, Gronbaek M (2010) Modifiable risk factors and survival in women diagnosed with primary breast cancer: results from a prospective cohort study. *Eur J Cancer Prev* 19:366–373
 34. Holmes MD, Murin S, Chen WY, Kroenke CH, Spiegelman D, Colditz GA (2007) Smoking and survival after breast cancer diagnosis. *Int J Cancer* 120:2672–2677
 35. Kwan ML, Kushi LH, Weltzien E, Tam EK, Castillo A, Sweeney C, Caan BJ (2010) Alcohol consumption and breast cancer recurrence and survival among women with early-stage breast cancer: the life after cancer epidemiology study. *J Clin Oncol* 28:4410–4416
 36. Feigelson HS, Calle EE, Robertson AS, Wingo PA, Thun MJ (2001) Alcohol consumption increases the risk of fatal breast cancer (United States). *Cancer Causes Control* 12:895–902
 37. Marston NJ, Richards WJ, Hughes D, Bertwistle D, Marshall CJ, Ashworth A (1999) Interaction between the product of the breast cancer susceptibility gene BRCA2 and DSS1, a protein functionally conserved from yeast to mammals. *Mol Cell Biol* 19:4633–4642
 38. Li J, Zou C, Bai Y, Wazer DE, Band V, Gao Q (2006) DSS1 is required for the stability of BRCA2. *Oncogene* 25:1186–1194
 39. Ma H, Hill CK, Bernstein L, Ursin G (2008) Low-dose medical radiation exposure and breast cancer risk in women under age 50 years overall and by estrogen and progesterone receptor status: results from a case-control and a case-case comparison. *Breast Cancer Res Treat* 109:77–90
 40. Hamajima N, Hirose K, Tajima K, Rohan T, Calle EE, Heath CW Jr, Coates RJ, Liff JM, Talamini R, Chantarakul N, Koetsawang S, Rachawat D, Morabia A, Schuman L, Stewart W, Szklo M, Bain C, Schofield F, Siskind V, Band P, Coldman AJ, Gallagher RP, Hislop TG, Yang P, Kolonel LM, Nomura AM, Hu J, Johnson KC, Mao Y, De Sanjose S, Lee N, Marchbanks P, Ory HW, Peterson HB, Wilson HG, Wingo PA, Ebeling K, Kunde D, Nishan P, Hopper JL, Colditz G, Gajalanski V, Martin N, Parthaisong T, Silpisornkosol S, Theetranont C, Boosiri B, Chutivongse S, Jimakorn P, Virutamasen P, Wongsrichanalai C, Ewertz M, Adami HO, Bergkvist L, Magnusson C, Persson I, Chang-Claude J, Paul C, Skegg DC, Spears GF, Boyle P, Evtifeeva T, Daling JR, Hutchinson WB, Malone K, Noonan EA, Stanford JL, Thomas DB, Weiss NS, White E, Andrieu N, Bremond A, Clavel F, Gairard B, Lansac J, Piana L, Renaud R, Izquierdo A, Viladiu P, Cuevas HR, Ontiveros P, Palet A, Salazar SB, Aristizabel N, Cuadros A, Tryggvadottir L, Tulinius H, Bachelot A, Le MG, Peto J, Franceschi S, Lubin F, Modan B, Ron E, Wax Y, Friedman GD, Hiatt RA, Levi F, Bishop T, Kosmelj K, Primic-Zakelj M, Ravnihar B, Stare J, Beeson WL, Fraser G, Bullbrook RD, Czuzick J, Duffy SW, Fentiman IS, Hayward JL, Wang DY, McMichael AJ, McPherson K, Hanson RL, Leske MC, Mahoney MC, Nasca PC, Varma AO, Weinstein AL, Moller TR, Olsson H, Ranstam J, Goldbohm RA, van den Brandt PA, Apelo RA, Baens J, de la Cruz JR, Javier B, Lacaya LB, Ngelangel CA, La Vecchia C, Negri E, Marubini E, Ferraroni M, Gerber M, Richardson S, Segala C, Gatei D, Kenya P, Kungu A, Mati JG, Brinton LA, Hoover R, Schairer C, Spirtas R, Lee HP, Rookus MA, van Leeuwen FE, Schoenberg JA, McCredie M, Gammon MD, Clarke EA, Jones L, Neil A, Vessey M, Yeates D, Appleby P, Banks E, Beral V, Bull D, Crossley B, Goodill A, Green J, Hermon C, Key T, Langston N, Lewis C, Reeves G, Collins R, Doll R, Peto R, Mabuchi K, Preston D, Hannaford P, Kay C, Rosero-Bixby L, Gao YT, Jin F, Yuan JM, Wei HY, Yun T, Zhiheng C, Berry G, Cooper BJ, Jelihovsky T, MacLennan R, Shearman R, Wang QS, Baines CJ, Miller AB, Wall C, Lund E, Stalsberg H, Shu XO, Zheng W, Katsouyanni K, Trichopoulou A, Trichopoulos D, Dabancens A, Martinez L, Molina R, Salas O, Alexander FE, Anderson K, Folsom AR, Hulka BS, Bernstein L, Enger S, Haile RW, Paganini-Hill A, Pike MC, Ross RK, Ursin G, Yu MC, Longnecker MP, Newcomb P, Bergkvist L, Kalache A, Farley TM, Holck S, Meirik O (2002) Alcohol, tobacco and breast cancer—collaborative reanalysis of individual data from 53 epidemiological studies, including 58, 515 women with breast cancer and 95, 067 women without the disease. *Br J Cancer* 87:1234–1245