



HAL
open science

Singular perturbation approach to an elastic dry friction problem with non-monotone coefficient

Yves Renard

► **To cite this version:**

Yves Renard. Singular perturbation approach to an elastic dry friction problem with non-monotone coefficient. Quarterly of Applied Mathematics, 2000, LVIII (2), pp.259-272. 10.1090/qam/1753401 . hal-00690555

HAL Id: hal-00690555

<https://hal.science/hal-00690555>

Submitted on 10 Feb 2018

HAL is a multi-disciplinary open access archive for the deposit and dissemination of scientific research documents, whether they are published or not. The documents may come from teaching and research institutions in France or abroad, or from public or private research centers.

L'archive ouverte pluridisciplinaire **HAL**, est destinée au dépôt et à la diffusion de documents scientifiques de niveau recherche, publiés ou non, émanant des établissements d'enseignement et de recherche français ou étrangers, des laboratoires publics ou privés.

Singular perturbation approach to an elastic dry friction problem with non-monotone coefficient

Yves RENARD,
LMC-IMAG, BP 53X, F-38041 Grenoble, France

Abstract - In this paper we study a one-dimensional dynamic model of dry friction with slip velocity dependent coefficient. In many cases, this model has more than one solution. We introduce a perturbed friction condition which allows to regain the uniqueness of the solution. We show that perturbed problem's solutions pointwise converge to a particular solution of the initial problem when the perturbation parameter tends to zero. The singular perturbation approach provides the analysis of a criterion used to select a solution of the problem, and suggests a method to study more elaborated dry friction problems.

1 Introduction

Models with dry friction and slip velocity dependent friction coefficient, especially when this coefficient has a decreasing part, were introduced to take into account stick-slip vibrations. Those vibrations are self-sustained oscillations induced by dry friction of elastic structures. They occur in engineering and geophysical systems as well as in everyday life. Because of the large number of factors which must be considered in dry friction processes, there does not exist a universally accepted model of this phenomenon. The simplest model, introduced by Euler, distinguishes between a static friction coefficient and a dynamic one. It was extended to a slip velocity dependent coefficient and studied by several authors on systems with finite number of degrees of freedom [8], [9], [5], [?], with also an important application in the analysis of the sliding of geological faults [2], [1].

Concerning continuous models, very few studies have been made. Here we carry on the study of a one-dimensional model, which was initiated in [6] and [7]. In many cases, with such a friction condition, the dynamic system has many solutions. In spite of this, most of the redundant solutions are unsatisfactory from a mechanical point of view, in the sense that they do not correspond to an expected behavior of the system. The approach initiated by [6] and [7] in order to select the acceptable solution, is to introduce a criterion corresponding to the perfect delay criterion of the catastrophe theory. An important difference is that this criterion is applied here to a dynamic process even though it is normally used in the quasi-static framework.

In this paper we introduce a perturbed friction condition. Combining theories of multi-valued differential equations [3] and singular perturbation of differential equations [11], we prove that the one-dimensional problem with this perturbed condition has a unique solution which approaches a particular solution of the initial problem, i.e. that the sequence of solutions of the perturbed problem converges pointwise to a solution of the non-perturbed problem. The perfect delay criterion remains qualitative and only makes sense with sufficiently smooth solutions. We show that when this criterion selects a unique solution then this is the same as the solution which is approached by the perturbed problem. This study sheds a new light on the use of the perfect delay criterion in such dynamical problems. Moreover, such a perturbation approach is likely to be effective in the analysis of multi-dimensional friction problems (see [?]).

2 Dynamic problem with dry friction

The problem we deal with, because of its simplicity, allows us to study important properties of elastic systems under dry friction with slip velocity dependent coefficient. This model is composed of a homogeneous linear elastic slab, of height H , fixed on its top, which slides with dry friction on a rigid foundation in uniform motion with a horizontal velocity V_e along the x axis (see Fig. 1). If we only consider the solutions which are constant along

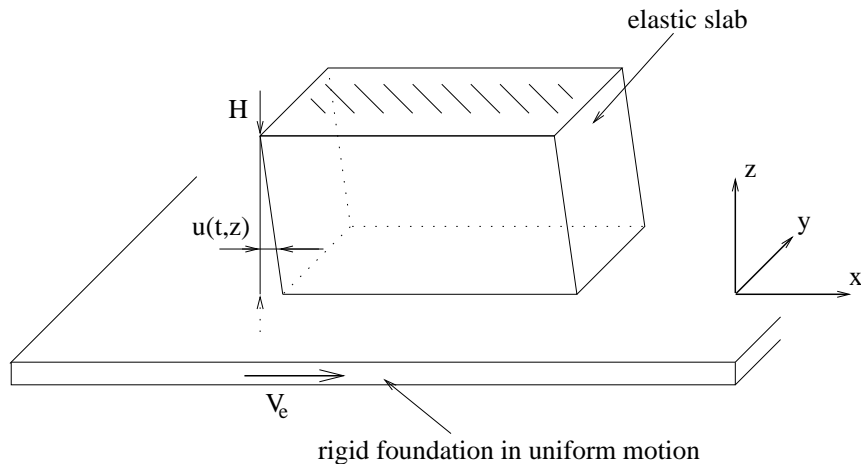


Figure 1: *Elastic slab sliding, with dry friction, on a rigid foundation which is in uniform motion V_e along the x axis.*

the horizontal coordinates, the displacement $u(t, z)$ along the x axis is given

by the following system of equations:

$$\partial_{tt}^2 u(t, z) - c^2 \partial_{zz}^2 u(t, z) = 0, \quad z \in]0, H[, \quad t \in]0, T], \quad (1)$$

$$u(t, H) = 0, \quad G \partial_z u(t, 0) = -F_f, \quad t \in]0, T], \quad (2)$$

where F_f is the friction force, G the shear modulus, $c = \sqrt{G/\rho}$ the shear wave velocity and ρ the density. The friction force is given by a Coulomb law with slip velocity dependent coefficient:

$$F_f \in -S\mu(|v_s|)\text{Sgn}(v_s), \quad (3)$$

where $\mu : \mathbb{R}^+ \longrightarrow \mathbb{R}^+$ is the friction coefficient, S the contact pressure which is assumed to be constant, $v_s = \partial_t u(t, 0) - V_e$ the slip velocity on the contact boundary and Sgn the multi-valued sign function defined by:

$$\text{Sgn}(x) = \begin{cases} [-1, 1], & \text{if } x = 0, \\ \left\{ \frac{x}{|x|} \right\} & \text{if } x \neq 0. \end{cases}$$

The problem is completed by the initial conditions:

$$u(0, z) = u_0(z), \quad \partial_t u(0, z) = u_1(z), \quad z \in [0, H]. \quad (4)$$

Following Ionescu and Paumier [6] or Leonov and Srinivasan [7], and with the relation on characteristic lines for $t \leq \frac{H}{c}$:

$$\partial_t u(t, 0) + c \partial_z u(t, 0) = \partial_t u(0, ct) + c \partial_z u(0, ct), \quad (5)$$

the problem (1)-(4) can be rewritten as a scalar inclusion on the contact boundary:

$$\alpha(t) \in \beta(v_s(t)), \quad (6)$$

with α and β given by:

$$\alpha(t) = \frac{G}{c}(u_1(ct) - V_e(t)) + G \partial_z u_0(ct), \quad \beta(v) = \frac{G}{c}v + S\mu(|v|)\text{Sgn}(v). \quad (7)$$

For any coefficient μ , the map β is not necessarily strictly monotone, and consequently does not always have an inverse function.

Remark : The inclusion (6) corresponds to the contact problem only for $0 \leq t \leq \frac{H}{c}$. This is not an important limitation, because if the problem is solved for $0 \leq t \leq \frac{H}{c}$ then the same analysis can be developed for $\frac{H}{c} \leq t \leq 2\frac{H}{c}$ with $t = \frac{H}{c}$ taken as the initial time. In the following, we consider $T \leq \frac{H}{c}$.

3 Non-uniqueness and perfect delay criterion

Let us take an example where μ reads:

$$\mu(v) = \mu_d + (\mu_s - \mu_d)e^{-\frac{v}{V_{cr}}}, \quad (8)$$

with $\mu_s > \mu_d$ (μ_s as static coefficient and μ_d as dynamic coefficient), and $V_{cr} > (\mu_s - \mu_d)$. This is a classical form for a slip velocity dependent coefficient, which is often used in practical models. Then the map β is given by

:

$$\beta(v) = \begin{cases} \{v - S\mu(-v)\} & \text{if } v < 0, \\ [-S\mu_s, +S\mu_s] & \text{if } v = 0, \\ \{v + S\mu(v)\} & \text{if } v > 0. \end{cases} \quad (9)$$

With S sufficiently large, β has the form shown on the Fig. 2 and is not

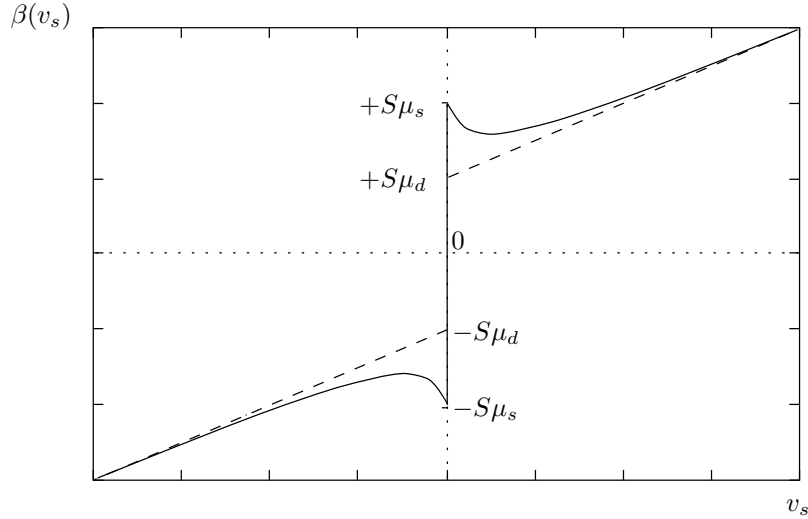


Figure 2: *the map β .*

strictly increasing. Basic properties of β (in particular $\lim_{v \rightarrow \pm\infty} \beta(v) = \pm\infty$) make that inclusion (6) has always at least one solution v_s for all function $\alpha : [0, T] \rightarrow \mathbb{R}$. But generally, even if the function α is continuous, there are many solutions and all of them are discontinuous. It is the case if for instance α is increasing from the value 0 to the value $2S\mu_s$ (see Fig. 2).

When inclusion (6) has many solutions, some of them do not correspond to the mechanical behavior we expect from the system. For instance, still with α increasing from the value 0 to the value $2S\mu_s$, we expect the system not to start sliding before the friction force reaches the value $S\mu_s$. For this reason, Ionescu and Paumier gave in [6] the following criterion in order to select the mechanically acceptable solution:

$$\textit{the system only jumps when it has no other choice.} \quad (10)$$

Independently, Leonov and Srinivasan gave in [7] a criterion which can be written as:

$$\text{at each instant } t, \text{ we select the solution which minimizes } |v_s^-(t) - v_s^+(t)|^1. \quad (11)$$

The second formulation gives a supplementary information on which jump to choose. This defines a criterion, called perfect delay criterion in the catastrophe theory, which is normally used in the framework of quasi-static problems.

This analysis gives important informations on the behavior of elastic structures under dry friction when a non-monotone coefficient of friction is used. The solutions of equations (1) and (2) can be seen as homogeneous motions of a two or three-dimensional elastic structure sliding over a rigid foundation (see [?]). The previous analysis implies that, generally, the solution is not unique for purely elastic dynamic models, and also that the solutions are very irregular, with the occurrence of velocity shocks.

4 Perturbed friction condition

The aim of this paper is to introduce a perturbed friction condition which allows to regain the uniqueness of the solution. Instead of the normal friction condition, which reads:

$$G\partial_z u(t, 0) \in S\mu(|v_s(t)|)\text{Sgn}(v_s(t)), \quad (12)$$

we consider the following perturbed friction condition:

$$\varepsilon \frac{d}{dt} v_s(t) - G\partial_z u(t, 0) \in -S\mu(|v_s(t)|)\text{Sgn}(v_s(t)), \quad (13)$$

where ε can be interpreted as the (small) density of the contact surface. The elastic friction problem with such a perturbed condition can be rewritten as follows on the contact boundary thanks to (5):

$$\varepsilon \frac{d}{dt} v_s(t) \in \alpha(t) - \beta(v_s(t)), \quad (14)$$

with α and β still given by (7). This is a singular perturbation of inclusion (6).

It is interesting to compare the perturbed problem solution and the solution selected with the perfect delay criterion. Fig. 3 shows this difference in the example given in the previous section (Eq. (8), (9)).

One can already see in this figure the close connection between the perfect delay solution and the perturbed one. In the following we prove a convergence result; the right graphs in Fig. 3, point out that the convergence cannot be uniform on $[0, T]$.

¹ We denote respectively by $\alpha^+(t) = \lim_{\tau \rightarrow t^+} \alpha(\tau)$ and $\alpha^-(t) = \lim_{\tau \rightarrow t^-} \alpha(\tau)$ the right and left limits.

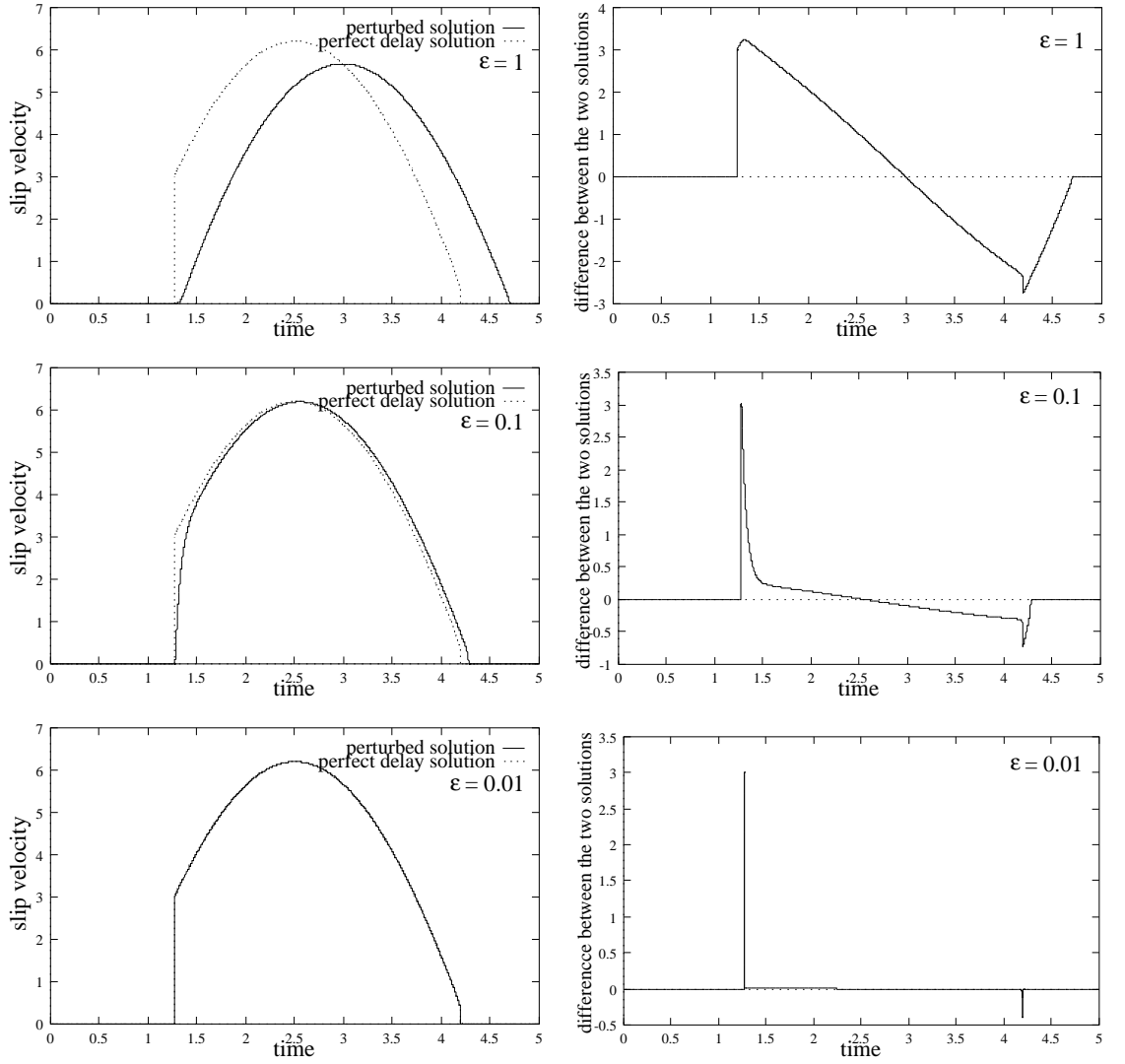


Figure 3: *Perturbed and perfect delay solutions.*

5 Basic properties of perturbed solutions

We define the following Cauchy problem associated with the differential inclusion (14):

$$\left\{ \begin{array}{l} \text{Find } v_\varepsilon : [0, T] \longrightarrow \mathbb{R} \text{ such that} \\ \varepsilon \frac{d}{dt} v_\varepsilon(t) \in \alpha(t) - \beta(v(t)), \quad \text{a.e. on }]0, T], \\ v_\varepsilon(0) = v^0, \end{array} \right. \quad (15)$$

and we make two elementary assumptions on β . The first one concerns the regularity of β :

Hypothesis 1

- β is upper semi-continuous with compact convex values,
- $(-\beta)$ is semi-Lipschitz, i.e. there exists a constant $M_\beta \in \mathbb{R}$ such that:

$$(\beta(v_2) - \beta(v_1))(v_1 - v_2) \leq M_\beta(v_1 - v_2)^2, \quad \forall v_1, v_2 \in \mathbb{R}.$$

A multi-valued map β is upper semi-continuous if for all closed sets $A \subset \mathbb{R}$ the set $\beta^{-1}(A)$ is closed (see [3]). If $\mu : \mathbb{R}^+ \rightarrow \mathbb{R}^+$ is Lipschitz continuous, those conditions are obviously satisfied. The second Hypothesis is that β is piecewise strictly monotone and surjective:

Hypothesis 2 there exist $N \geq 0$ and $2N$ pairs $(v_j^*, \alpha_j^*)_{1 \leq j \leq 2N}$, with $v_1^* \leq v_2^* \leq \dots \leq v_{2N}^*$ and:

- $[v_{2N}, +\infty[, [\alpha_{2N}, +\infty[;]-\infty, v_1^*],]-\infty, \alpha_1^*]$ and $[v_{2i}^*, v_{2i+1}^*], [\alpha_{2i}^*, \alpha_{2i+1}^*]$, $1 \leq i \leq N - 1$ strictly increasing branches of β ,
- $[v_{2i-1}^*, v_{2i}^*], [\alpha_{2i-1}^*, \alpha_{2i}^*]$, $1 \leq i \leq N$, strictly decreasing branches of β ,
- $\lim_{|v| \rightarrow +\infty} |\beta(v)| = +\infty$,

where $[v_1, v_2], [\alpha_1, \alpha_2]$ is called a strictly increasing (respectively strictly decreasing) branch of β if $\alpha_1 \in \beta(v_1), \alpha_2 \in \beta(v_2), \alpha_1 < \alpha_2$ (respectively $\alpha_1 > \alpha_2$) and:

$$(\beta(u) - \beta(w))(u - w) > 0 \text{ (respectively } < 0 \text{)}, \quad \forall u, w \in]v_1, v_2[, u \neq w.$$

With Hypotheses 1 and 2, we have $\beta(\mathbb{R}) = \mathbb{R}$ and $v \mapsto \beta(v) + M_\beta v$ is a maximal monotone map. Often, the dependence of the friction coefficient μ on v_s which is chosen in the models in the literature is rather simple and sufficiently smooth, and Hypotheses 1 and 2 are not too restrictive.

The existence and uniqueness of an absolutely continuous solution to problem (15), with $\varepsilon > 0$, α measurable and β satisfying the Hypothesis 1, is given by a general result on semi-Lipschitz differential inclusions which can be found in [3] for example (moreover, K. Deimling gives in [3] a simple application of differential inclusions to dry friction).

Let us now give a result on the global behavior of the solution of problem (15).

Proposition 1 *With β satisfying Hypotheses 1 and 2, $\alpha \in L^\infty(0, T)$ and with a given $\varepsilon > 0$, let (v_1, α_1) and (v_2, α_2) be two pairs of values such that:*

- $\alpha_1 < \alpha_2$, $v_1 \leq v_2$, $\alpha_1 \in \beta(v_1)$, $\alpha_2 \in \beta(v_2)$,
- $v^0 \in [v_1, v_2]$,
- $\alpha(t) \in [\alpha_1, \alpha_2]$, a.e. on $[0, T]$,

then the solution v_ε of problem (15) satisfies:

$$v_\varepsilon(t) \in [v_1, v_2], \quad \forall t \in [0, T].$$

Proof. Let $\tilde{\beta}$ be the following multi-valued map:

$$\tilde{\beta}(v) = \begin{cases} \{\alpha_1 + (v - v_1)\} & \text{if } v < v_1, \\ \beta(v) & \text{if } v \in [v_1, v_2], \\ \{\alpha_2 + (v - v_2)\} & \text{if } v > v_2. \end{cases}$$

Let \tilde{v}_ε be a absolutely continuous solution of the following Cauchy problem:

$$\begin{cases} \varepsilon \frac{d}{dt} \tilde{v}_\varepsilon(t) \in \alpha(t) - \tilde{\beta}(\tilde{v}_\varepsilon(t)), & \text{a.e. on } [0, T], \\ \tilde{v}_\varepsilon(t_0) = v^0. \end{cases} \quad (16)$$

Assume that there exists $t_2 \in]0, T]$ such that $\tilde{v}_\varepsilon(t_2) < v_1$. From the continuity of \tilde{v}_ε , there exists $t_1 < t_2$ such that $\tilde{v}_\varepsilon(t_1) = v_1$ and $\tilde{v}_\varepsilon(t) < v_1$ for $t_1 < t \leq t_2$. But on this interval:

$$\tilde{v}_\varepsilon(t) = v_1 + \frac{1}{\varepsilon} \int_{t_1}^t (\alpha(s) - \alpha_1 + v_1 - \tilde{v}_\varepsilon(s)) ds \geq v_1,$$

a contradiction. Symmetrically, there does not exist $t_3 \in [0, T]$ such that $\tilde{v}_\varepsilon(t_3) > v_2$. Thus $\tilde{v}_\varepsilon(t) \in [v_1, v_2]$ for all $t \in [0, T]$, and \tilde{v}_ε is a solution of problem (15) because $\tilde{\beta}$ and β are identical on $[v_1, v_2]$. The uniqueness of the solution of problem (15) implies $\tilde{v}_\varepsilon = v_\varepsilon$. ■

Proposition 2 *With β satisfying Hypotheses 1 and 2, $\alpha \in L^\infty(0, T)$ and with a given $\varepsilon > 0$, the solution v_ε of problem (15) has the following properties:*

1. $\|v_\varepsilon\|_{L^\infty(0, T)} < M_1$, where $M_1 > 0$ is a constant independent of ε ,
2. $\frac{d}{dt} v_\varepsilon \in L^\infty(0, T)$.

Proof. Let us set:

$$\begin{aligned} \alpha_1 &= \min(\alpha_1^*, \operatorname{ess\,inf}_{t \in [0, T]} \alpha(t), \beta(v^0)), & \alpha_2 &= \max(\alpha_{2N}^*, \operatorname{ess\,sup}_{t \in [0, T]} \alpha(t), \beta(v^0)), \\ v_1 &= \min(\beta^{-1}(\alpha_1)), & v_2 &= \max(\beta^{-1}(\alpha_2)), \end{aligned}$$

then $v_1 \leq v_2$ and Proposition 1 implies:

$$v_\varepsilon(t) \in [v_1, v_2], \quad \forall t \in [0, T].$$

Properties 1. and 2. are immediate consequences of this result. ■

6 Boundary layer at $t = 0$

The first step in establishing the convergence result is to analyze the behavior of the sequence v_ε on a small time interval near the initial value. The goal of this section is to prove that the sequence v_ε converges pointwise in a neighborhood of $t = 0$. In order to do this, we introduce some concepts inspired by the work of Tikhonov et al. [11]. The pointwise convergence at $t = 0$ is obvious because $v_\varepsilon(0) = v^0$ for all $\varepsilon > 0$; in spite of this, if the initial condition satisfies:

$$\alpha^+(0) \notin \beta(v^0),$$

there is a boundary layer behavior at $t = 0$ of the sequence of solution v_ε when ε tends to zero. Let us introduce the terminology concerning the points of the graph β when β satisfies Hypothesis 2:

Terminology: a point (α, v) with $\alpha \in \beta(v)$ is called a **stable point** (respectively an **unstable point**) if there exists a strictly increasing branch (respectively strictly decreasing branch) $[v_j^*, v_{j+1}^*]$, $[\alpha_j^*, \alpha_{j+1}^*]$ with $\alpha \in]\alpha_j^*, \alpha_{j+1}^*[$ (respectively $\alpha \in]\alpha_{j+1}^*, \alpha_j^*[$) and $v \in [v_j^*, v_{j+1}^*]$. Points (α_j^*, v_j^*) are called critical points; points $(\alpha_{2i-1}^*, v_{2i-1}^*)$ are the **critical maximum points**; points $(\alpha_{2i}^*, v_{2i}^*)$ are the **critical minimum points**.

In the following, the data α is taken with bounded variation ($\alpha \in BV(0, T)$). For basic properties of functions with bounded variations we refer to [4] or [10]. For basic properties of multi-valued maps we refer to [3].

6.1 Cluster point of the boundary layer

Definition 1 A point $v \in \mathbb{R}$ is called a **cluster point of the boundary layer at $t = 0$** for the problem (15) if and only if there exist a strictly positive sequence $(\varepsilon_n)_{n \geq 0}$ and a positive sequence $(t_n)_{n \geq 0}$ such that:

$$\lim_{n \rightarrow +\infty} \varepsilon_n = 0, \quad \lim_{n \rightarrow +\infty} t_n = 0, \quad \lim_{n \rightarrow +\infty} v_{\varepsilon_n}(t_n) = v.$$

It means that the pair $(0, v)$ is a cluster point of the graph sequence $(t, v_\varepsilon(t))$.

Proposition 3 With $\alpha \in BV(0, T)$ and β satisfying Hypotheses 1 and 2, the set of all cluster points of the boundary layer at $t = 0$ for problem (15) is a closed bounded interval. We denote this interval by $I_\alpha(v^0)$.

Proof. From Proposition 2 we know that the sequence v_ε is bounded in $L^\infty(0, T)$, uniformly in ε . Thus the set of all cluster points is necessarily bounded. It is closed because it is the intersection of the closed set $t = 0$ with the closed set of all cluster points of the graph sequence $(t, v_\varepsilon(t))$. The value v^0 is always a cluster point. If there exists another cluster point $v > v^0$ then, from the definition of a cluster point, there exist a strictly positive sequence $(\varepsilon_n)_{n \geq 0}$ and a positive sequence $(t_n)_{n \geq 0}$ with:

$$\lim_{n \rightarrow +\infty} \varepsilon_n = 0, \quad \lim_{n \rightarrow +\infty} t_n = 0, \quad \lim_{n \rightarrow +\infty} v_{\varepsilon_n}(t_n) = v.$$

If we set:

$$\zeta_n = v_{\varepsilon_n}(t_n) - v,$$

then $\lim_{n \rightarrow +\infty} \zeta_n = 0$; and for any $\tilde{v} \in]v^0, v[$, there exists $\tilde{N} > 0$ such that $|\zeta_n| < v - \tilde{v}$ for $n > \tilde{N}$. From the continuity of the functions v_{ε_n} , there exists $\tilde{t}_{\varepsilon_n} \in [0, t_n]$, for $n > \tilde{N}$, such that:

$$v_{\varepsilon_n}(\tilde{t}_{\varepsilon_n}) = \tilde{v}.$$

Thus $\lim_{n \rightarrow +\infty} v_{\varepsilon_n}(\tilde{t}_{\varepsilon_n}) = \tilde{v}$, and \tilde{v} is a cluster point for the same sequences as v . The same proof holds when there exists a cluster point $v < v^0$, and this implies that the set of all the cluster points is an interval. ■

We present now two lemmas which will be very useful in the following.

Lemma 1 *Let β satisfy Hypotheses 1 and 2, and $\alpha \in BV(0, T)$, if there exist $v_0 \in \mathbb{R}$ and $t_0 \in [0, T[$ such that:*

$$\alpha^+(t_0) > \beta(v_0),$$

then there exist $\delta > 0$ and $\zeta > 0$ such that:

$$\alpha^+(t) > \beta(v), \quad \forall t \in [t_0, t_0 + \zeta], \forall v \in [v_0 - \delta, v_0 + \delta].$$

Proof. Let us denote by:

$$\eta = \min(\alpha^+(t_0) - \beta(v_0)),$$

the gap between $\alpha^+(t_0)$ and $\beta(v_0)$. As the right limit $\alpha^+(t_0)$ exists, there exists $\zeta > 0$ such that:

$$|\alpha^+(t) - \alpha^+(t_0)| < \frac{\eta}{4}, \quad \forall t \in [t_0, t_0 + \zeta].$$

Assume that:

$$\forall \delta > 0, \exists v_\delta \in [v_0 - \delta, v_0 + \delta] ; \min(\alpha^+(t_0) - \beta(v_\delta)) < \frac{\eta}{4},$$

then we have:

$$\lim_{\delta \rightarrow 0} v_\delta = v_0, \text{ and } \{\alpha^+(t_0) - \beta(v_\delta)\} \cap]-\infty, \frac{\eta}{4}] \neq \emptyset.$$

Thus, the upper semi-continuity of β implies:

$$\{\alpha^+(t_0) - \beta(v_0)\} \cap]-\infty, \frac{\eta}{4}] \neq \emptyset,$$

a contradiction. So there exists $\delta > 0$ such that:

$$\alpha^+(t_0) > \beta(v) + \frac{3\eta}{4}, \quad \forall v \in [v_0 - \delta, v_0 + \delta].$$

■

The second lemma gives information on the sign of $\beta(v) - \alpha^+(0)$ on the interval $I_a(v^0)$:

Lemma 2 *If β satisfies Hypotheses 1 and 2, and $\alpha \in BV(0, T)$, then:*

$$\min[(\beta(v) - \alpha^+(0))(v - v^0)] \leq 0, \quad \forall v \in I_a(v^0).$$

Proof. Assume that there exists $v_b \in I_a(v^0)$ such that $(\beta(v_b) - \alpha^+(0))(v_b - v^0) > 0$. Suppose for simplicity that $v_b > v^0$ (the case $v_b < v^0$ is similar), then we have:

$$\beta(v_b) - \alpha^+(0) > 0.$$

From Lemma 1, there exist $\delta > 0$ and $0 < \zeta < v_b - v^0$ such that:

$$\beta(v) - \alpha^+(t) > 0, \quad \forall t \in [0, \zeta], \forall v \in [v_b - \delta, v_b + \delta].$$

Thus, for any $\varepsilon > 0$ we have:

$$\frac{d}{dt} v_\varepsilon(t) < 0, \text{ a.e. on }]0, \zeta] \text{ and whenever } v_\varepsilon(t) \in [v_b - \delta, v_b + \delta].$$

We can conclude that $v_\varepsilon(t) \leq v_b - \delta$ for all $t \in [0, \zeta]$, because $v_\varepsilon(0) < v_b - \delta$. So the point v_b cannot be a cluster point, a contradiction.

■

6.2 Limit points of the boundary layer

Definition 2 *A point $v \in \mathbb{R}$ is called a limit point of the boundary layer at $t = 0$ for the problem (15) if and only if there exists $t_\varepsilon > 0$ for all $\varepsilon > 0$ such that:*

$$\lim_{\varepsilon \rightarrow 0} t_\varepsilon = 0, \quad \lim_{\varepsilon \rightarrow 0} v_\varepsilon(t_\varepsilon) = v.$$

Proposition 4 *With $\alpha \in BV(0, T)$ and β satisfying Hypotheses 1 and 2, the set of all limit points of the boundary layer at $t = 0$ for problem (15) is a closed sub interval of $I_a(v^0)$. We denote this interval by $I_l(v^0)$.*

The proof of this proposition is similar to that of Proposition 3.

Proposition 5 *With $\alpha \in BV(0, T)$ and β satisfying Hypotheses 1 and 2, the initial value v^0 is always an extremity of the interval $I_l(v^0)$. If $(\alpha^+(0), v^0)$ is not an unstable point of β then v^0 is also an extremity of the interval $I_a(v^0)$.*

Proof. Let us set $I_a(v^0) = [v_a, v_b]$ and assume $v^0 \in]v_a, v_b[$. From Lemma 2 we have:

$$\begin{aligned}\alpha^+(0) &\leq \max \beta(v), & \forall v \in [v_a, v^0[, \\ \alpha^+(0) &\geq \min \beta(v), & \forall v \in]v^0, v_b[.\end{aligned}$$

It means that $(\alpha^+(0), v^0)$ is an unstable point of β . Let $[v_i^*, v_{i+1}^*], [\alpha_i^*, \alpha_{i+1}^*]$ be the corresponding decreasing branch of β and set:

$$[v'_a, v'_b] = [v_i^*, v_{i+1}^*] \cap I_l(v^0).$$

Then $v^0 \in]v'_a, v'_b[$, and we have:

$$\alpha^+(0) < \beta(v'_a), \quad \alpha^+(0) > \beta(v'_b).$$

From Lemma 1, there exist $\delta > 0$ and $\zeta > 0$ such that:

$$\begin{aligned}\alpha^+(t) &< \beta(v), & \text{for } v \in [v'_a - \delta, v'_a + \delta], \text{ and } t \in [0, \zeta], \\ \alpha^+(t) &> \beta(v), & \text{for } v \in [v'_b - \delta, v'_b + \delta], \text{ and } t \in [0, \zeta].\end{aligned}$$

Because v'_a and v'_b are limit points, there exists $\varepsilon_0 > 0$ such that for all $\varepsilon \in]0, \varepsilon_0]$ we have:

$$\exists t_\varepsilon^a, t_\varepsilon^b \in]0, t_0], \quad |v_\varepsilon(t_\varepsilon^a) - v'_a| < \frac{\delta}{2}, \quad |v_\varepsilon(t_\varepsilon^b) - v'_b| < \frac{\delta}{2}.$$

For a given $\varepsilon \in]0, \varepsilon_0]$, Assume $t_\varepsilon^a > t_\varepsilon^b$. We have $\alpha(t) - \beta(v) > 0$ for $t \in]0, \zeta]$ and for $v \in [v'_b - \delta, v'_b + \delta]$ thus also $\frac{d}{dt}v_\varepsilon > 0$ a.e. on $[0, \zeta]$ and whenever $v_\varepsilon \in [v'_b - \delta, v'_b + \delta]$. So $|v_\varepsilon(t_\varepsilon^a) - v'_a| < \frac{\delta}{2}$ is not possible. In the same way, if $t_\varepsilon^a < t_\varepsilon^b$ then it is not possible to have $|v_\varepsilon(t_\varepsilon^b) - v'_b| < \frac{\delta}{2}$, a contradiction. ■

6.3 Attractive point of the boundary layer

Definition 3 *A point $v_0 \in \mathbb{R}$ is called an attractive point at $t_0 \in [0, T[$ for problem (15) if the following two conditions hold:*

$$\cdot \alpha^+(t_0) \in \beta(v_0),$$

- . there exist a strictly increasing branch $[v_1, v_2], [\alpha_1, \alpha_2]$ of β and $\zeta > 0$ such that:

$$v_0 \in [v_1, v_2], \quad \alpha^+(t) \in [\alpha_1, \alpha_2], \quad \forall t \in [t_0, t_0 + \zeta[.$$

If $(\alpha^+(0), v_0)$ is a stable point of β then v_0 is an attractive point. The limitation of the second condition operates when $(\alpha^+(0), v_0)$ is a critical point.

Definition 4 A point $v_0 \in \mathbb{R}$ is called a **backward attractive point** at $t_0 \in]0, T]$ for the problem (15) if the following two conditions hold:

- . $\alpha^-(t_0) \in \beta(v_0)$,
- . there exist a strictly increasing branch $[v_1, v_2], [\alpha_1, \alpha_2]$ of β and $\zeta > 0$ such that:

$$v_0 \in [v_1, v_2], \quad \alpha^-(t) \in [\alpha_1, \alpha_2], \quad \forall t \in]t_0 - \zeta, t_0].$$

It is possible to characterize the behavior of the sequence of solutions v_ε when the interval $I_a(v^0)$ contains an attractive point as follows:

Lemma 3 With $\alpha \in BV(0, T)$ and β satisfying Hypotheses 1 and 2, if the interval $I_a(v^0)$ contains an attractive point v_0 then for all strictly positive sequence $(\varepsilon_n)_{n \geq 0}$ and all positive sequence $(t_n)_{n \geq 0}$ such that:

$$\lim_{n \rightarrow +\infty} \varepsilon_n = 0, \quad \lim_{n \rightarrow +\infty} t_n = 0, \quad \lim_{n \rightarrow +\infty} v_{\varepsilon_n}(t_n) = v_0,$$

for all $\delta > 0$, there exists $\zeta_2 > 0$ such that for all $\zeta_1 \in]0, \zeta_2[$ there exists $\tilde{N} > 0$ with:

$$v_{\varepsilon_n}(t) \in [v_0 - \delta, v_0 + \delta], \quad \forall t \in [\zeta_1, \zeta_2], \forall n \geq \tilde{N},$$

$$(v_{\varepsilon_n}(t) - v_0) \text{Sgn}(v_0 - v^0) < \delta, \quad \forall t \in [0, \zeta_2], \forall n \geq \tilde{N}.$$

Proof. Let us assume $v_0 > v^0$ (if $v_0 = v^0$ the result is an obvious application of Proposition 1 and if $v_0 < v^0$ the proof is similar). Because v_0 is an attractive point, there exists a strictly increasing branch $[v_i^*, v_{i+1}^*], [\alpha_i^*, \alpha_{i+1}^*]$ of β and $\zeta > 0$ such that:

$$v_0 \in [v_1, v_2], \quad \alpha^+(t) \in [\alpha_1, \alpha_2], \quad \forall t \in [0, \zeta].$$

If $v_0 = v_i^*$ and $\alpha^+(0) = \alpha_1$ then $(\alpha^+(0), v_0)$ is a critical minimum attractive point. Because $[v_{i-1}^*, v_i^*], [\alpha_{i-1}^*, \alpha_i^*]$ is a strictly decreasing branch of β , there exists $v \in]v^0, v_0[$ such that $\beta(v) > \alpha^+(0)$, a contradiction from Lemma 2.

Thus $(\alpha^+(0), v_0)$ is not a critical minimum point and there exists $\delta_0 > 0$ such that:

$$\alpha^+(0) > \beta(v), \quad \forall v \in [v_0 - \delta, v_0[.$$

Given any $\delta > 0$, let us set:

$$\begin{aligned} \tilde{v}_1 &= v_0 - \min(\delta_0, \delta), & \tilde{\alpha}_1 &\in \beta(\tilde{v}_1), \\ \tilde{v}_2 &= v_0 + \min(v_2 - v_0, \delta), & \tilde{\alpha}_2 &= \max \beta(\tilde{v}_2). \end{aligned}$$

Because of the existence of the right limit $\alpha^+(0)$, there exists $\zeta_2 > 0$ such that:

$$\alpha^+(t) \in [\tilde{\alpha}_1, \tilde{\alpha}_2], \quad \forall t \in [0, \zeta_2].$$

Moreover, if we consider $(\varepsilon_n)_{n \geq 0}$ strictly positive and $(t_n)_{n \geq 0}$ positive verifying:

$$\lim_{n \rightarrow +\infty} \varepsilon_n = 0, \quad \lim_{n \rightarrow +\infty} t_n = 0, \quad \lim_{n \rightarrow +\infty} v_{\varepsilon_n}(t_n) = v,$$

then for all $\zeta_1 \in]0, \zeta_2]$, there exists $\tilde{N} > 0$ such that:

$$t_n < \zeta_2, \quad \forall n \geq \tilde{N}, \quad v_{\varepsilon}(t_n) \geq \tilde{v}_1.$$

Let $\tilde{t}_n \in]0, t_n]$ be the smallest time t such that $v_{\varepsilon}(t) = v_0 - \delta$, we can apply Proposition 1 on intervals $[\tilde{v}_1, \tilde{v}_2]$ and $[\tilde{\alpha}_1, \tilde{\alpha}_2]$ in order to conclude:

$$v_{\varepsilon}(t) \in [\tilde{v}_1, \tilde{v}_2], \quad \forall t \in [\zeta_1, \zeta_2],$$

$$v_{\varepsilon}(t) \leq \tilde{v}_2, \quad \forall t \in [0, \zeta_2].$$

■

Lemma 4 *With $\alpha \in BV(0, T)$ and β satisfying Hypotheses 1 and 2, if the interval $I_l(v^0)$ contains an attractive point v_0 then for all $\delta > 0$ there exists $\zeta_2 > 0$ such that for all $\zeta_1 \in]0, \zeta_2[$ there exists $\varepsilon_0 > 0$ with:*

$$v_{\varepsilon}(t) \in [v_0 - \delta, v_0 + \delta], \quad \forall t \in [\zeta_1, \zeta_2], \forall \varepsilon \in]0, \varepsilon_0],$$

$$(v_{\varepsilon}(t) - v_0) \text{Sgn}(v_0 - v^0) < \delta, \quad \forall t \in [0, \zeta_2], \forall \varepsilon \in]0, \varepsilon_0].$$

The proof of this lemma is similar to the one of the previous lemma.

Proposition 6 *With $\alpha \in BV(0, T)$ and β satisfying Hypotheses 1 and 2, if we set $I_a(v^0) = [i_{a1}, i_{a2}]$ and $I_l(v^0) = [i_{l1}, i_{l2}]$, then we have the following properties:*

a - *the interval $]i_{a1}, i_{a2}[$ does not contain any attractive points,*

b - *$\alpha^+(0) \geq \max(\beta(i_{a1}), \beta(i_{l1}))$ and $\alpha^+(0) \leq \min(\beta(i_{a2}), \beta(i_{l2}))$,*

c - if $(\alpha^+(0), i_{a1})$ or $(\alpha^+(0), i_{l1})$ is a critical minimum point, then it is attractive; if $(\alpha^+(0), i_{a2})$ or $(\alpha^+(0), i_{l2})$ is a critical maximum point, then it is attractive,

d - each extremity of $I_a(v^0)$ or $I_l(v^0)$ is either v^0 or an attractive point.

Proof.

a - Assume there exists an attractive point $v_0 \in [v^0, i_{a2}[$. Applying Lemma 3 with $\delta = \frac{i_{a2} - v_0}{2}$ we obtain that i_{a2} is not a cluster point, a contradiction. In the same way, the interval $]i_{a1}, v^0]$ does not contain any attractive points.

b - Assume $\alpha^+(0) > \beta(i_{a2})$ (the other cases are analogous). From Lemma 1, there exist $\delta > 0$ and $\zeta > 0$ such that:

$$\alpha^+(t) > \beta(v), \quad \forall v \in [i_{a2} - \delta, i_{a2} + \delta], \quad \forall t \in [0, \zeta].$$

Let us set:

$$\eta = \min_{\substack{v \in [i_{a2} - \delta, i_{a2} + \delta] \\ t \in [0, \zeta]}} (\alpha^+(t) - \beta(v)).$$

Because i_{a2} is a cluster point, there exist a strictly positive sequence $(\varepsilon_n)_{n \geq 0}$ and a positive sequence $(t_n)_{n \geq 0}$ such that:

$$\lim_{n \rightarrow +\infty} \varepsilon_n = 0, \quad \lim_{n \rightarrow +\infty} t_n = 0, \quad \lim_{n \rightarrow +\infty} v_{\varepsilon_n}(t_n) = i_{a2}.$$

For all $\theta \in]0, \zeta]$ there exists $\tilde{N} \geq 0$ such that for all $n \geq \tilde{N}$ we have:

$$v_{\varepsilon_n}(t_n) \in [i_{a2} - \delta, i_{a2} + \delta], \quad t_n \in [0, \frac{\theta}{2}], \quad \varepsilon_n \in]0, \frac{\eta\theta}{\delta}].$$

But:

$$\varepsilon \frac{d}{dt} v_{\varepsilon_n}(t) \in \alpha(t) - \beta(v_{\varepsilon_n}(t)) \geq \eta, \text{ a.e. on } [0, \zeta] \text{ and whenever } v_{\varepsilon_n}(t) \in [i_{a2} - \delta, i_{a2} + \delta],$$

thus, for a given $n \geq \tilde{N}$ we have:

$$v_{\varepsilon_n}(\theta) \geq \min(i_{a2} - \delta + \frac{\eta}{\varepsilon_n}(\theta - t_n), i_{a2} + \delta).$$

In particular:

$$v_{\varepsilon_n}(\theta) \geq i_{a2} + \delta.$$

From the continuity of v_{ε_n} , there exists $\tilde{t}_n \in [0, \theta]$ such that $v_{\varepsilon_n}(\tilde{t}_n) = i_{a2} + \delta$. Thus $i_{a2} + \delta$ is a cluster point, a contradiction.

c - Assume $(\alpha^+(0), i_{a2})$ is a critical maximum but non-attractive point (the other cases are analogous). There exists $\delta > 0$ such that $[i_{a2} - \delta, i_{a2}]$ is a strictly increasing branch of β and $[i_{a2}, i_{a2} + \delta]$ is a strictly decreasing branch of β . Existence of the right limit $\alpha^+(0)$ implies that there exists $\zeta > 0$ such that:

$$\alpha^+(t) > \beta(i_{a2} - \delta), \quad \forall t \in [0, \zeta].$$

The point $(\alpha^+(0), i_{a2})$ is not an attractive point since:

$$\forall \theta \in]0, \zeta], \exists 0 < t_\theta < \tilde{t}_\theta < \theta, \quad \alpha^+(t) > \beta(v), \quad \forall v \in [i_{a2} - \delta, i_{a2} + \delta], \quad \forall t \in [t_\theta, \tilde{t}_\theta].$$

The point i_{a2} is a cluster point, thus there exist a strictly positive sequence $(\varepsilon_n)_{n \geq 0}$ and a positive sequence $(t_n)_{n \geq 0}$ such that:

$$\lim_{n \rightarrow +\infty} \varepsilon_n = 0, \quad \lim_{n \rightarrow +\infty} t_n = 0, \quad \lim_{n \rightarrow +\infty} v_{\varepsilon_n}(t_n) = i_{a2}.$$

For a given $\theta \in]0, \zeta]$ let us set:

$$\eta = \min(\alpha^+(t) - \beta(v)), \quad \text{for } v \in [i_{a2} - \delta, i_{a2} + \delta], \quad \text{and } t \in [t_\theta, \tilde{t}_\theta].$$

There exists $\tilde{N} \geq 0$ such that for all $n \geq \tilde{N}$ we have:

$$v_{\varepsilon_n}(t_n) \in [i_{a2} - \delta, i_{a2} + \delta], \quad t_n \in [0, t_\theta], \quad \varepsilon_n \in]0, \frac{\eta(\tilde{t}_\theta - t_\theta)}{2\delta}].$$

In particular:

$$v_{\varepsilon_n}(t) \geq i_{a2} - \delta, \quad \forall t \in [t_n, t_\theta],$$

then:

$$\frac{d}{dt} v_{\varepsilon_n}(t) \geq \frac{\eta}{\varepsilon_n}, \quad \text{a.e. on } [t_\theta, \tilde{t}_\theta], \quad \text{and whenever } v_{\varepsilon_n} \leq i_{a2} + \delta.$$

We obtain:

$$v_{\varepsilon_n}(\tilde{t}_\theta) \geq \min(i_{a2} + \delta, i_{a2} - \delta \frac{\eta}{\varepsilon_n}(\tilde{t}_\theta - t_\theta)).$$

So:

$$v_{\varepsilon_n}(\tilde{t}_\theta) \geq i_{a2} + \delta.$$

From the continuity of v_{ε_n} , there exists a $\tilde{t}_n \in [0, \tilde{t}_\theta]$ such that $v_{\varepsilon_n}(\tilde{t}_n) = i_{a2} + \delta$. Thus $i_{a2} + \delta$ is a cluster point, a contradiction.

d - Assume for instance that i_{a2} is neither equal to v^0 nor an attractive point. A consequence of property b) of Lemma 2 is that $\alpha^+(0) \in \beta(i_{a2})$. The point $(i_{a2}, \alpha^+(0))$ cannot be an unstable point and if it is a critical point, property c) implies that it is necessary an attractive critical maximum point. If it is not a critical point, it is a stable point which is automatically attractive.

The previous proposition allows to describe the intervals $I_a(v^0)$ and $I_l(v^0)$ whenever $(\alpha^+(0), v^0)$ is not an unstable point of β , as follows: ■

- if $(\alpha^+(0), v^0)$ is an attractive point then $I_a(v^0) = I_l(v^0) = \{v^0\}$,
- if either $\alpha^+(0) > \beta(v^0)$ or $(\alpha^+(0), v^0)$ is a critical maximum non-attractive point then:

$$I_a(v^0) = I_l(v^0) = [v^0, \min\{v > v^0 : v \text{ attractive point}\}],$$

- if either $\alpha^+(0) < \beta(v^0)$ or $(\alpha^+(0), v^0)$ is a critical minimum non-attractive point then:

$$I_a(v^0) = I_l(v^0) = [\max\{v < v^0 : v \text{ attractive point}\}, v^0],$$

In particular, when $(\alpha^+(0), v^0)$ is not an unstable point of β , $I_l(v^0) = I_a(v^0)$ and this interval contains a unique attractive point.

Let us briefly consider the case where $(\alpha^+(0), v^0)$ is an unstable point of β . This corresponds to an initial value which is on the border between two regions of attraction. The behavior of the solution depends on the behavior of $\alpha(t)$ in a neighborhood of $t = 0$. If there exists a small interval $]0, \zeta[$ on which:

- α is constant, then the unique solution on this interval is $v_\varepsilon \equiv v^0$ for all $\varepsilon > 0$,
- α is strictly increasing then $I_a(v^0) = I_l(v^0) = [v^0, \min\{v > v^0 : v \text{ attractive point}\}]$,
- α is decreasing then $I_a(v^0) = I_l(v^0) = [\max\{v < v^0 : v \text{ attractive point}\}, v^0]$.

On the other hand, if α does not verify any of these three conditions, for instance this is the case with:

$$\alpha(t) = \alpha(0) + t^3 \sin\left(\frac{1}{t}\right),$$

it is possible to have $I_a(v^0) = [\max\{v < v^0 : v \text{ attractive point}\}, \min\{v > v^0 : v \text{ attractive point}\}]$ and $I_l(v^0) = \{v^0\}$. So $I_a(v^0)$ contains two attractive points and $I_l(v^0)$ none. In this case, the sequence v_ε does not converge. To avoid this, we impose in the following for $(\alpha^+(0), v^0)$ not to be an unstable point, even though this condition is somewhat too strong.

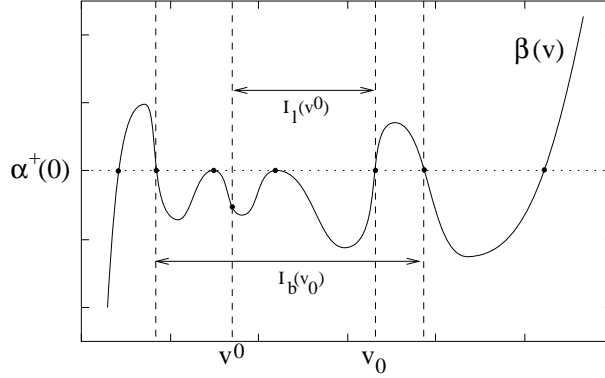


Figure 4: *Example of the determination of v_0 , $I_1(v^0)$ and $I_b(v_0)$ with a strictly increasing α .*

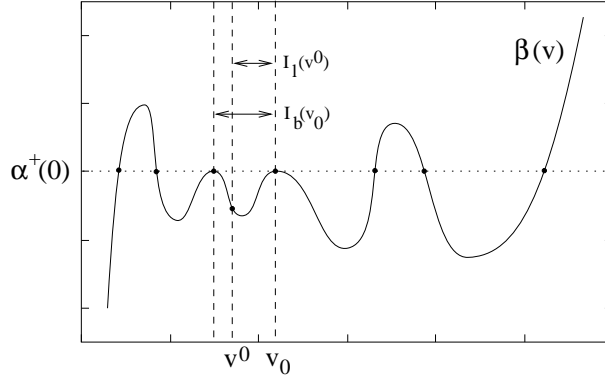


Figure 5: *Example of the determination of v_0 , $I_1(v^0)$ and $I_b(v_0)$ with a decreasing α .*

6.4 Region of attraction of an attractive point

Definition 5 *Let v_0 be an attractive point of the boundary layer at $t = 0$ for problem (15). We call the region of attraction of v_0 the interval of all the initial values v^0 such that $v_0 \in I_1(v^0)$. We denote this interval by $I_b(v_0)$.*

It is easy to obtain the expression for the region of attraction from the expression for $I_1(v^0)$. The interior of $I_b(v_0)$ is $]v_a, v_b[$ with:

$$v_a = \begin{cases} v_0 & \text{if } (\alpha^+(0), v_0) \text{ is critical minimum,} \\ \max\{v < v_0 : (\alpha^+(0), v) \text{ unstable or critical maximum attractive}\} \cup \{-\infty\} & \text{otherwise,} \end{cases}$$

$$v_b = \begin{cases} v_0 & \text{if } (\alpha^+(0), v_0) \text{ is critical maximum,} \\ \min\{v > v_0 : (\alpha^+(0), v) \text{ unstable or critical minimum attractive}\} \cup \{+\infty\} & \text{otherwise.} \end{cases}$$

Clearly, with $v^0 \in I_b(v_0)$, we have $I_l(v^0) \subset I_b(v_0)$. More precisely $I_l(v^0)$ is an interval with v^0 and v_0 as extremities. Figures 4 and 5 present an example of the determination of intervals $I_b(v_0)$ and $I_l(v^0)$, and their sensitivity to the behavior of α in a neighborhood of $t = 0$.

6.5 Behavior of the sequence of solutions in a neighborhood of $t = 0$

In this subsection, we show that, whenever $(\alpha^+(0), v^0)$ is not an unstable point of β , the sequence v_ε converges pointwise in a neighborhood of $t = 0$. Actually, in this case $I_l(v^0)$ contains a unique attractive point v_0 , and by the definition of an attractive point, there exist a strictly increasing branch $[v_1, v_2], [\alpha_1, \alpha_2]$ of β and $\zeta > 0$ such that:

$$v_0 \in [v_1, v_2], \quad \alpha^+(t) \in [\alpha_1, \alpha_2], \quad \forall t \in [0, \zeta].$$

That is why we first consider the case with β strictly increasing. We can formulate the following results:

Proposition 7 *With $\varepsilon > 0$, $\alpha \in BV(0, T)$ and β strictly increasing which satisfies Hypothesis 1, we have the following properties:*

1. *If v_1 and v_2 are solutions of problem (15) with respective initial values v_1^0 and v_2^0 , then the difference $|v_1(t) - v_2(t)|$ is decreasing on the interval $[0, T]$,*
2. *Let α_i be a sequence of functions in $BV(0, T)$ which uniformly converges to a function $\alpha \in BV(0, T)$, then the sequence v_{ε_i} of the solutions of problem (15) for the respective data α_i , uniformly converges to v_ε , the solution of the problem (15) for the data α . Moreover this convergence is uniform in ε .*

Proof. Property 1: both v_1 and v_2 are solutions of problem (15), thus:

$$\varepsilon \frac{d}{dt} v_1(t) - \varepsilon \frac{d}{dt} v_2(t) \in \beta(v_2) - \beta(v_1), \quad \text{a.e. on } [0, T],$$

also:

$$\varepsilon \left(\frac{d}{dt} v_1(t) - \frac{d}{dt} v_2(t) \right) (v_1 - v_2) \in (\beta(v_2) - \beta(v_1)) (v_1 - v_2), \quad \text{a.e. on } [0, T],$$

and because β is increasing:

$$\varepsilon \frac{d}{dt} (v_1 - v_2)^2 \leq 0, \quad \text{a.e. on } [0, T].$$

Property 2: the map β has an increasing uni-valued continuous reciprocal function that we denote by β^{-1} . Let us set:

$$M = \sup_{\varepsilon > 0, i \geq 0} \|v_{\varepsilon_i}\|_{L^\infty(0, T)}, \quad A = \sup_{i \geq 0} \|\alpha_i\|_{L^\infty(0, T)}.$$

We have $A < +\infty$ from the uniform convergence of the α_i , and $M < +\infty$ because M can be expressed directly as a function of A (see proof of Proposition 2). The function β^{-1} is continuous on $[-M, +M]$, thus it is uniformly continuous and we can write:

$$\forall \gamma > 0, \exists \eta_\gamma > 0; \forall a_1, a_2 \in [-A, +A], |a_1 - a_2| < \eta_\gamma \Rightarrow |\beta^{-1}(a_1) - \beta^{-1}(a_2)| < \gamma.$$

Using the increasing property of β^{-1} we can rewrite this as follows:

$$\forall \gamma > 0, \exists \eta_\gamma > 0; \forall a_1, a_2 \in [-A, +A], a_2 - a_1 \leq \eta_\gamma \Rightarrow \beta^{-1}(a_2) - \beta^{-1}(a_1) \leq \gamma.$$

Setting $w_1 = \beta^{-1}(a_1)$ and $w_2 = \beta^{-1}(a_2)$, we obtain:

$$\forall \gamma > 0, \exists \eta_\gamma > 0; \forall w_1, w_2 \in [-M, +M], \min(\beta(w_2) - \beta(w_1)) \leq \eta_\gamma \Rightarrow w_2 - w_1 \leq \gamma,$$

and also:

$$\forall \gamma > 0, \exists \eta_\gamma > 0; \forall w_1, w_2 \in [-M, +M], w_2 - w_1 > \gamma \Rightarrow \beta(w_2) - \beta(w_1) > \eta_\gamma. \quad (17)$$

For any $\eta > 0$ let us set:

$$\delta(\eta) = \inf\{\gamma > 0 : \text{assertion (17) is satisfied with } \eta_\gamma = \eta\}.$$

It is clear that the value of $\delta(\eta)$ tends to zero when η tends to zero. We prove the following property to end the demonstration:

$$\|v_{\varepsilon_i} - v_\varepsilon\|_{L^\infty(0,T)} \leq \delta(\|\alpha_i - \alpha\|_{L^\infty(0,T)}).$$

Assume that there exists $t_1 \in [0, T]$ such that:

$$v_{\varepsilon_i}(t_1) > v_\varepsilon(t_1) + \delta(\|\alpha_i - \alpha\|_{L^\infty(0,T)}).$$

Thanks to the continuity of v_{ε_i} and v_ε , there exists $t_0 \in]0, t_1[$ such that:

$$v_{\varepsilon_i}(t_0) = v_\varepsilon(t_0) + \delta(\|\alpha_i - \alpha\|_{L^\infty(0,T)}),$$

and

$$v_{\varepsilon_i}(t) > v_\varepsilon(t) + \delta(\|\alpha_i - \alpha\|_{L^\infty(0,T)}), \quad \text{for } t \in]t_0, t_1].$$

Hence we also have:

$$\varepsilon \frac{d}{dt} v_{\varepsilon_i} - \varepsilon \frac{d}{dt} v_\varepsilon \in \alpha_i(t) - \alpha(t) - \beta(v_{\varepsilon_i}) + \beta(v_\varepsilon), \quad \text{a.e. on }]t_0, t_1],$$

thus:

$$\varepsilon \frac{d}{dt} v_{\varepsilon_i} - \varepsilon \frac{d}{dt} v_\varepsilon < 0 \quad \text{a.e. on }]t_0, t_1],$$

a contradiction. Similarly it is possible to establish that:

$$v_{\varepsilon_i}(t) \geq v_\varepsilon(t) - \delta(\|\alpha_i - \alpha\|_{L^\infty(0,T)}), \quad \forall t \in [0, T],$$

and the proof is completed. ■

It is now possible to formulate the following convergence result:

Proposition 8 *With $\alpha \in BV(0, T)$ and β strictly increasing verifying Hypothesis 1, the sequence v_ε of the solutions of problem (15) converges pointwise to a function v_0 when ε tends to zero. Moreover, v_0 is left continuous, has a right limit everywhere on $]0, T]$ and satisfies:*

$$\begin{aligned} v_0^+(t) & \text{ is an attractive point for all } t \in [0, T[, \\ v_0(t) & \text{ is a backward attractive point for all } t \in]0, T]. \end{aligned}$$

First, we establish the following intermediary result:

Lemma 5 *The assertion of Proposition 8 is valid with α a step function*

Proof of the lemma. It is sufficient to prove the result with only one point of discontinuity. The proof can be obviously extended to a finite number of intervals. Let us take:

$$\alpha(t) = \begin{cases} a_0 & \text{if } t \in [0, t_0) \\ a_1 & \text{if } t \in (t_0, T]. \end{cases}$$

The point $(\alpha^+(0), v^0)$ cannot be an unstable point, thus $I_l(v^0)$ contains a unique attractive point v_0 . Using Lemma 4, for all $\delta > 0$, there exists $\zeta_2 > 0$ such that for all $\zeta_1 \in]0, \zeta_2]$ there exists $\varepsilon_0 > 0$ with:

$$v_\varepsilon(t) \in [v_0 - \delta, v_0 + \delta], \quad \forall t \in [\zeta_1, \zeta_2], \quad \forall \varepsilon \in]0, \varepsilon_0].$$

From property 1 of Proposition 7 the difference $|v_\varepsilon(t) - v_0|$ is decreasing on $[0, t_0]$, thus:

$$v_\varepsilon(t) \in [v_0 - \delta, v_0 + \delta], \quad \forall t \in [\zeta_1, t_0],$$

and so, the sequence v_ε uniformly converges to the value v_0 on $[\zeta_1, a]$, for all $\zeta_1 \in]0, t_0[$. On the interval $[t_0, T]$ we consider the following Cauchy problem:

$$\begin{cases} \varepsilon \frac{d}{dt} \tilde{v}_\varepsilon(t) \in \alpha(t) - \beta(\tilde{v}_\varepsilon(t)), & \text{a.e. on } [t_0, T], \\ \tilde{v}_\varepsilon(t_0) = v_0. \end{cases}$$

Similarly, the sequence \tilde{v}_ε converges uniformly on every interval $[t_0 + \zeta_1, T]$ to a constant value \tilde{v}_0 . Moreover, at $t = t_0$, the sequence v_ε converges to the value v_0 . The property 1 of Proposition 7 implies:

$$|\tilde{v}_\varepsilon(t) - v_\varepsilon(t)| < |v_0 - v_\varepsilon(t_0)| \quad \forall t \in [t_0, T],$$

which means that the sequence v_ε uniformly converges to the constant value \tilde{v}_0 on the whole interval $[t_0 + \zeta_1, T]$. The additional properties of v_0 are obviously verified. ■

Proof of Proposition 8. Since the function α has bounded variation, it can be uniformly approximated by a sequence of step functions α_i . Let v_{ε_i} be the solutions of problem (15) for the respective data α_i and v_ε the solution of problem (15) for the data α . Using Lemma 5, there exist functions v_{0i} such that, for each i , the sequence v_{ε_i} converges pointwise to v_{0i} when ε tends to zero, with $\alpha_i^-(t) \in \beta(v_{0i}(t))$ on $]0, T]$. Property 2 of Proposition 7 implies that v_{ε_i} uniformly converges on $[0, T]$ to v_ε when i tends to $+\infty$ and uniformly in ε . Thus, for $t \in]0, T]$ we have:

$$\forall \delta > 0, \exists \tilde{N} > 0, \exists \varepsilon(\tilde{N}) > 0; \varepsilon_1, \varepsilon_2 < \varepsilon(\tilde{N}) \Rightarrow \begin{cases} |v_{\varepsilon_1 \tilde{N}}(t) - v_{\varepsilon_2 \tilde{N}}(t)| < \delta/3, \\ |v_{\varepsilon_2 \tilde{N}}(t) - v_{\varepsilon_2}(t)| < \delta/3, \\ |v_{\varepsilon_1 \tilde{N}}(t) - v_{\varepsilon_1}(t)| < \delta/3, \end{cases}$$

hence:

$$\forall \delta > 0, \exists \tilde{N} > 0, \exists \varepsilon(\tilde{N}) > 0; \varepsilon_1, \varepsilon_2 < \varepsilon(\tilde{N}) \Rightarrow |v_{\varepsilon_1}(t) - v_{\varepsilon_2}(t)| < \delta.$$

So, the sequence $v_\varepsilon(t)$ is a Cauchy sequence when ε tends to zero, thus it converges pointwise to a function $v_0(t)$. Moreover, v_0 is the uniform limit of the functions v_{0i} because, using the different convergences we can write:

$$\forall \delta > 0, \exists \tilde{N} > 0; \forall i \geq \tilde{N}, \forall t \in [0, T], \exists \varepsilon(i, t) > 0, \varepsilon < \varepsilon(i, t) \Rightarrow \begin{cases} |v_{\varepsilon_i}(t) - v_{0i}(t)| < \delta/3, \\ |v_\varepsilon(t) - v_0(t)| < \delta/3, \\ |v_{\varepsilon_i}(t) - v_\varepsilon(t)| < \delta/3. \end{cases}$$

Thus:

$$\forall \delta > 0, \exists \tilde{N} > 0; \forall i \geq \tilde{N}, \forall t \in [0, T], |v_0(t) - v_{0i}(t)| < \delta.$$

In order to establish the left continuity of v_0 , we can write:

$$v_0(t) = \lim_{i \rightarrow \infty} v_{0i}(t) = \lim_{i \rightarrow \infty} \beta^{-1}(\alpha_i^-(t)) = \beta^{-1}(\lim_{i \rightarrow \infty} \alpha_i^-(t)).$$

Using the uniform convergence of the α_i to α we have:

$$\lim_{i \rightarrow \infty} \alpha_i^-(t) = \alpha^-(t).$$

This proves that $v_0(t)$ is a backward attractive point. In a same manner, for the right limit we have:

$$v_0^+(t) = \lim_{i \rightarrow \infty} v_{0i}^+(t) = \lim_{i \rightarrow \infty} \beta^{-1}(\alpha_i^+(t)) = \beta^{-1}(\alpha^+(t)).$$

This proves that $v_0^+(t)$ is an attractive point. ■

We can now describe the behavior of the sequence v_ε in a neighborhood of $t = 0$:

Proposition 9 *With $\alpha \in BV(0, T)$, β satisfying Hypotheses 1 and 2 and the point $(\alpha^+(0), v^0)$ not being an unstable point of β , there exist a strictly increasing branch $[v_1, v_2], [\alpha_1, \alpha_2]$ of β and $\zeta > 0$ such that the sequence v_ε of the solutions of problem (15) converges pointwise to a function v_0 on $[0, \zeta]$. Moreover, v_0 is left continuous, has a right limit everywhere on $]0, \zeta]$ and satisfies:*

$$\begin{aligned} v_0^+(t) & \text{ is an attractive point for all } t \in [0, \zeta[, \\ v_0(t) & \text{ is a backward attractive point for all } t \in]0, \zeta]. \end{aligned}$$

Proof. Because the point $(\alpha^+(0), v^0)$ is not an unstable point, $I_l(v^0)$ contains a unique attractive point v_{00} . Using the definition of an attractive point there exist a strictly increasing branch $[v_1, v_2], [\alpha_1, \alpha_2]$ of β and $\zeta > 0$ such that:

$$v_{00} \in [v_1, v_2], \quad \alpha^+(t) \in [\alpha_1, \alpha_2], \quad \forall t \in [0, \zeta[.$$

On the interval $[0, \zeta]$ we consider the following Cauchy problem:

$$\begin{cases} \varepsilon \frac{d}{dt} \tilde{v}_\varepsilon(t) \in \alpha(t) - \beta(\tilde{v}_\varepsilon(t)), \text{ a.e. on } [0, \zeta], \\ \tilde{v}_\varepsilon(t_0) = v_{00}. \end{cases}$$

We can apply Proposition 8 to this problem because we have, from Proposition 1, $\tilde{v}_\varepsilon(t) \in [v_1, v_2]$ for all $t \in [0, \zeta]$ and for all $\varepsilon > 0$. Thus, the sequence \tilde{v}_ε converges pointwise to a function \tilde{v}_0 on $[0, \zeta]$ when ε tends to zero. Moreover, v_0 has the expected properties. We still have to prove that the sequence v_ε converges pointwise to v_0 too.

Assume $v_{00} > v^0$ (for $v_{00} = v^0$ we can apply directly Proposition 8 and for $v_{00} < v^0$ the proof is similar). The strictly increasing branch $[v_1, v_2], [\alpha_1, \alpha_2]$ is included in a strictly increasing branch $[v_i^*, v_{i+1}^*], [\alpha_i^*, \alpha_{i+1}^*]$ of β with (α_i^*, v_i^*) critical minimum point. Necessarily $v_{00} > v_i^*$ because otherwise $I_l(v^0) = [v^0, v_i^*]$ with a $v_1 \in]v^0, v_i^*]$ such that $\beta(v) > \alpha^+(0)$, which is impossible if we consider Lemma 2. From Lemma 4, for all $\delta > 0$, there exists $\zeta_2 > 0$ such that for all $\zeta_1 \in]0, \zeta_2]$ there exists $\varepsilon_0 > 0$ with:

$$v_\varepsilon(t) \in [v_{00} - \delta, v_{00} + \delta], \quad \forall t \in [\zeta_1, \zeta_2], \forall \varepsilon \in]0, \varepsilon_0].$$

For $\delta < v_{00} - v_i^*$, the property 1 of Proposition 7 implies that $|v_\varepsilon(t) - \tilde{v}_\varepsilon(t)|$ is decreasing on $[\zeta_1, \zeta]$. Thus $v_\varepsilon - \tilde{v}_\varepsilon(t)$ converges uniformly to zero on all intervals $[\zeta_1, \zeta]$ with $\zeta_1 > 0$. ■

7 General convergence result

Theorem 1 *Assume that $\alpha \in BV(0, T)$, β satisfies Hypotheses 1 and 2 and the point $(\alpha^+(0), v^0)$ is not an unstable point of β . Then, the sequence v_ε*

of the solutions of problem (15) converges pointwise to a function v_0 when ε tends to zero. Moreover, v_0 is left continuous, has a right limit everywhere on $]0, T]$ and satisfies:

$$\begin{aligned} v_0^+(t) & \text{ is an attractive point for all } t \in [0, T[, \\ v_0(t) & \text{ is a backward attractive point for all } t \in]0, T]. \end{aligned}$$

Proof. From Proposition 9 we know that Theorem 1 holds in a neighborhood of $t = 0$. We saw in the proof of this proposition that there exists a strictly increasing branch $[v_i^*, v_{i+1}^*], [\alpha_i^*, \alpha_{i+1}^*]$ of β with $\alpha^+(0) \in [\alpha_i^*, \alpha_{i+1}^*]$ such that, if we set:

$$t_0 = \sup\{t : \alpha^+(\tau) \in [\alpha_i^*, \alpha_{i+1}^*] \forall \tau \in [0, t]\},$$

then, the sequence v_ε converges pointwise on $[0, t_0]$ to a function v_0 which has the expected properties. If now we consider the following Cauchy problem:

$$\begin{cases} \varepsilon \frac{d}{dt} \tilde{v}_\varepsilon(t) \in \alpha(t) - \beta(\tilde{v}_\varepsilon(t)), \text{ a.e. on } [t_0, T], \\ \tilde{v}_\varepsilon(t_0) = v_0(t_0). \end{cases} \quad (18)$$

then, we can apply Proposition 9 to this problem. So there exists a strictly increasing branch $[v_j^*, v_{j+1}^*], [\alpha_j^*, \alpha_{j+1}^*]$ of β which is different from the previous one, with $\alpha^+(t_0) \in [\alpha_j^*, \alpha_{j+1}^*]$ such that if we set:

$$t_1 = \sup\{t : \alpha^+(\tau) \in [\alpha_j^*, \alpha_{j+1}^*] \forall \tau \in [t_0, t]\},$$

then the sequence \tilde{v}_ε converges pointwise on $[t_0, t_1]$ to a function \tilde{v}_0 which has the expected properties.

We denote by $\tilde{I}_l(v_0(t_0))$ and $\tilde{I}_b(\tilde{v}_0^+(t_0))$, respectively, the interval of all limit points and the region of attraction of the boundary layer for problem (18).

Because $v_0(t_0) \in [v_i^*, v_{i+1}^*]$ and $\tilde{v}_0^+(t_0) \in [v_j^*, v_{j+1}^*]$ we have necessarily $v_0(t_0) \neq \tilde{v}_0^+(t_0)$. Thus $v_0(t_0)$ is neither an attractive point nor an unstable point. So $v_0(t_0)$ belongs to the interior of $\tilde{I}_b(\tilde{v}_0^+(t_0))$, because an extremity of $\tilde{I}_b(\tilde{v}_0^+(t_0))$ is either an unstable point or an attractive critical point. Thus for $\delta > 0$ sufficiently small we have:

$$[v_0(t_0) - \delta, v_0(t_0) + \delta] \subset \tilde{I}_b(\tilde{v}_0^+(t_0)).$$

Because $v_\varepsilon(t_0)$ converges to $v_0(t_0)$ when ε tends to zero, there exists $\varepsilon_0 > 0$ such that $v_\varepsilon(t_0) \in [v_0(t_0) - \delta, v_0(t_0) + \delta]$ for all $\varepsilon \in]0, \varepsilon_0]$.

Let v_ε^a be the solution of problem (18) with initial value $v_\varepsilon^a(t_0) = v_0(t_0) - \delta$ and let v_ε^b be the solution of problem (18) with initial value

$v_\varepsilon^b(t_0) = v_0(t_0) + \delta$. On the interval $[t_0, t_1]$ we have $v_\varepsilon(t) \in [v_\varepsilon^a(t), v_\varepsilon^b(t)]$. From Proposition 9, the two sequences v_ε^a and v_ε^b converge to \tilde{v}_0 when ε tends to zero, thus v_ε converges to \tilde{v}_0 too.

The previous reasoning can be obviously extended to a finite number of branch changes. To conclude the claim, it is sufficient to prove that there is necessarily only a finite number of branch changes on the interval $[0, T]$.

Assume that the point $(\alpha^+(0), v_0)$ belongs to a strictly increasing branch $[\alpha_{i_0}^*, \alpha_{i_0+1}^*], [v_{i_0}^*, v_{i_0+1}^*]$ of β . The first transition between two increasing branches holds at a time $t = t_1$ only if either $\alpha^+(t_1) \geq \alpha_{i_0+1}^*$ or $\alpha^+(t_1) \leq \alpha_{i_0}^*$ and toward another strictly increasing branch $[\alpha_{i_1}^*, \alpha_{i_1+1}^*], [v_{i_1}^*, v_{i_1+1}^*]$ of β . In the same way, the second transition holds at a time $t = t_2$ only if either $\alpha^+(t_2) \geq \alpha_{i_1+1}^*$ or $\alpha^+(t_2) \leq \alpha_{i_1}^*$ and toward a strictly increasing branch $[\alpha_{i_2}^*, \alpha_{i_2+1}^*], [v_{i_2}^*, v_{i_2+1}^*]$ of β . We can conclude:

$$|\alpha^+(0) - \alpha^+(t_1)| + |\alpha^+(t_1) - \alpha^+(t_2)| > \min_{1 \leq i \leq 2N-1} |\alpha_i^* - \alpha_{i+1}^*|,$$

More generally, if t_i , for $1 \leq i \leq M$, are the transition times between two strictly increasing branches of β , then:

$$\sum_{i=1}^{M-1} |\alpha^+(t_i) - \alpha^+(t_{i+1})| \geq \frac{M}{2} \min_{1 \leq i \leq 2N-1} |\alpha_i^* - \alpha_{i+1}^*|.$$

If we denote by $V_0^T \alpha^+$ the total variation of α^+ , which is finite because $\alpha \in BV(0, T)$, we have:

$$\sum_{i=1}^{M-1} |\alpha^+(t_i) - \alpha^+(t_{i+1})| \leq V_0^T \alpha^+,$$

and thus:

$$M \leq 2 * \frac{V_0^T \alpha^+}{\min_{1 \leq i \leq 2N-1} |\alpha_i^* - \alpha_{i+1}^*|},$$

and the number of transition is necessarily finite. ■

8 Connection with the perfect delay criterion

The expressions (10) and (11) of the perfect delay criterion only make sense for sufficiently smooth solutions. Assuming that β satisfies Hypotheses 1 and 2, we will compare the limit solution of the perturbed problem (15) and the solution selected by the perfect delay criterion in some cases which show the global behavior.

- a) Strictly increasing branch of β and α continuous.

Assume that α is continuous and that the solution remains on a strictly increasing branch $[\alpha_1, \alpha_2], [v_1, v_2]$ of β . Proposition 8 implies that the limit solution $v_0(t)$ of the perturbed problem satisfies $v_0(t) \in [v_1, v_2]$. Moreover, the map β has a continuous inverse function on the strictly increasing branch. It implies that v_0 is continuous. Thus in this case the solution v_0 respects the perfect delay criterion.

- b) Strictly increasing branch of β and α discontinuous.

If now α has a point of discontinuity $\alpha^-(t_1) \neq \alpha^+(t_1)$, the limit solution which still satisfies $v_0(t) \in [v_1, v_2]$, is discontinuous at $t = t_1$. The expression (10) of the perfect delay criterion gives no information on which jump to choose. Each value $v_0^+(t_1) \in \beta^{-1}(\alpha^+(t_1))$ is acceptable. This expression does not always allow to select a unique solution. Expression (11) of the criterion tells us that the smallest jump has to be chosen. This additional information is not always sufficient because two jumps can have the same length. Moreover, the choice of the smallest jump is not always compatible with the limit solution v_0 .

- c) Critical maximum point of β and α continuous and increasing.

Now we assume that α is continuous and strictly increasing, that the solution remains on a strictly increasing branch of β , and that for a given time $t = t_1$ the function $\alpha(t_1)$ reaches a critical maximum point $(v_1, \alpha(t_1))$ of β . There does not exist a continuous solution of the inclusion (6). As in the previous case, the expression (10) of the perfect delay criterion does not indicate which jump is to be chosen. Expression (11) indicates that the smallest jump has to be chosen. As in the previous case, this choice is not always compatible with the limit solution v_0 .

As a conclusion, for smooth enough solutions, when the expressions (10) selects a unique solution of (6) this is the same as the limit solution of Theorem 1. Even though expression (11) gives a little more information on the jumps, this information is not always compatible with the limit solution v_0 and when it is not the case, the choice of the smallest jump is not clearly justified.

References

- [1] W.R. BRACE, J.D. BYERLEE. Stick-slip as a mechanism for earthquakes. *Science*, N° 153 : pp 990–992, 1966.
- [2] M. CAMPILLO, I.R. IONESCU, J.-C. PAUMIER, Y. RENARD. On the dynamic sliding with friction of a rigid block and of an infinite elastic

- slab. *Physics of the Earth and Planetary Interiors*, N° 96 : pp 15–23, 1996.
- [3] K. DEIMLING. *Multivalued differential equations*. Walter de Gruyter, Berlin, 1992.
- [4] L.C. EVANS, R.F. GARIEPY. *Measure theory and fine properties of functions*. CRC Press, 1992.
- [5] C. GAO, D. KUHLMANN-WILSDORF. On stick-slip and velocity dependence of friction at low speeds. *ASME Journal of Tribology*, N° 112 : pp 355–360, april 1990.
- [6] I.R. IONESCU, J.-C. PAUMIER. On the contact problem with slip rate dependent friction in elastodynamic. *Eur. J. Mech., A/Solids*, N° 4 : pp 555–568, 1994.
- [7] A.I. LEONOV, A. SRINIVASAN. Self-Oscillations of an Elastic Plate Sliding over a Smooth Surface. *Int. J. Engng. Sci.*, 31 N° 3 : pp 453–473, 1993.
- [8] E. RABINOWICZ. *Friction & Wear*, pages 149–164, Study of the stick-slip process. Davies, Elsevier New-York, 1949.
- [9] E. RABINOWICZ. The intrinsic variables affecting the stick-slip process. *Proceedings of the royal physic society*, N° 71 : pp 668–675, 1958.
- [10] W. RUDIN. *Analyse réelle et complexe*. Masson, Paris, 1992.
- [11] A.N. TIKHONOV, A.B. VASILÉVA, A.G. SVESHNIKOV. *Differential Equations, Chapter VII, Asymptotics of solutions of differential equations with respect to a small parameter*, pages 181–213. Springer Verlag, 1980.