



**HAL**  
open science

## Foraging fidelity as a recipe for a long life: foraging strategy and longevity in male southern elephant seals.

Matthieu Authier, Ilham Bentaleb, Aurore Ponchon, Céline Martin,  
Christophe Guinet

### ► To cite this version:

Matthieu Authier, Ilham Bentaleb, Aurore Ponchon, Céline Martin, Christophe Guinet. Foraging fidelity as a recipe for a long life: foraging strategy and longevity in male southern elephant seals.. PLoS ONE, 2012, 7 (4), pp.e32026. 10.1371/journal.pone.0032026 . hal-00688779

**HAL Id: hal-00688779**

**<https://hal.science/hal-00688779>**

Submitted on 26 May 2021

**HAL** is a multi-disciplinary open access archive for the deposit and dissemination of scientific research documents, whether they are published or not. The documents may come from teaching and research institutions in France or abroad, or from public or private research centers.

L'archive ouverte pluridisciplinaire **HAL**, est destinée au dépôt et à la diffusion de documents scientifiques de niveau recherche, publiés ou non, émanant des établissements d'enseignement et de recherche français ou étrangers, des laboratoires publics ou privés.



Distributed under a Creative Commons Attribution 4.0 International License

# Foraging Fidelity as a Recipe for a Long Life: Foraging Strategy and Longevity in Male Southern Elephant Seals

Matthieu Authier<sup>1,2\*</sup>, Ilham Bentaleb<sup>3</sup>, Aurore Ponchon<sup>3,4</sup>, Céline Martin<sup>3</sup>, Christophe Guinet<sup>1</sup>

**1** Centre d'Études Biologiques de Chizé, UPR 1934 du CNRS, Villiers-en-Bois, France, **2** École Doctorale Sciences pour l'Environnement Gay Lussac-Université de Poitiers, France, **3** Institut des Sciences de l'Évolution, UMR 5554 du CNRS, Montpellier, France, **4** Centre d'Écologie Fonctionnelle et Évolutive, UMR 5175 du CNRS, Montpellier, France

## Abstract

Identifying individual factors affecting life-span has long been of interest for biologists and demographers: how do some individuals manage to dodge the forces of mortality when the vast majority does not? Answering this question is not straightforward, partly because of the arduous task of accurately estimating longevity in wild animals, and of the statistical difficulties in correlating time-varying ecological covariables with a single number (time-to-event). Here we investigated the relationship between foraging strategy and life-span in an elusive and large marine predator: the Southern Elephant Seal (*Mirounga leonina*). Using teeth recovered from dead males on îles Kerguelen, Southern Ocean, we first aged specimens. Then we used stable isotopic measurements of carbon ( $\delta^{13}\text{C}$ ) in dentin to study the effect of foraging location on individual life-span. Using a joint change-point/survival modelling approach which enabled us to describe the ontogenetic trajectory of foraging, we unveiled how a stable foraging strategy developed early in life positively covaried with longevity in male Southern Elephant Seals. Coupled with an appropriate statistical analysis, stable isotopes have the potential to tackle ecological questions of long standing interest but whose answer has been hampered by logistic constraints.

**Citation:** Authier M, Bentaleb I, Ponchon A, Martin C, Guinet C (2012) Foraging Fidelity as a Recipe for a Long Life: Foraging Strategy and Longevity in Male Southern Elephant Seals. PLoS ONE 7(4): e32026. doi:10.1371/journal.pone.0032026

**Editor:** André Chiaradia, Phillip Island Nature Parks, Australia

**Received:** October 5, 2011; **Accepted:** January 18, 2012; **Published:** April 10, 2012

**Copyright:** © 2012 Authier et al. This is an open-access article distributed under the terms of the Creative Commons Attribution License, which permits unrestricted use, distribution, and reproduction in any medium, provided the original author and source are credited.

**Funding:** This study is part of a national research program (no. 109, H. Weimerskirch and the observatory Mammifères Explorateurs du Milieu Océanique, MEMO SOERE CTD 02) supported by the French Polar Institute (Institut Paul Emile Victor). The Territoire des Terres Australes et Antarctiques Françaises, the TOTAL Foundation and ANR-VMC 07 IPSOS-SEAL program contributed to this study. The funders had no role in study design, data collection and analysis, decision to publish, or preparation of the manuscript.

**Competing Interests:** The authors have declared that no competing interests exist.

\* E-mail: authierm@gmail.com

## Introduction

Identifying individual factors affecting life-span has long been of interest for biologists and demographers [1,2]: how do some individuals manage to dodge the “little devils” of death [3] longer than the large majority of their conspecifics? To start answering this question, several problems need to be overcome; the first being the accurate estimation of life-span or longevity. In the case of vertebrates, longevity may be estimated by following individuals from their birth till their death using mark-recapture methods [4]. However, long-lived organisms (for example, seabirds) present additional challenges: a wandering albatross (*Diomedea exulans*) may live up to 60 years [5], requiring a lot of patience, serendipity, and skills to secure funds and manpower from demographers. Yet knowledge of individual longevity may be critical to shed light on life-history patterns [6–12]. Recent studies have moved away from population-level (life-tables, for example [13]) to individual-level inferences (for example, [14]), which is the level where natural selection occurs. This move is the result of both conceptual and technical advances, most notably in estimating a notoriously difficult individual fitness [15,16]. It also results from the availability of rich datasets collected on wild populations over several decades. Such data depth allows to study the evolution and the ecological correlates of life-history traits in the wild.

In the case of mammal species, most studies investigating the relationship between longevity and fitness have focused on females

[6–8,10–12,17–19] (but see [9]). These studies, which mainly concerned large terrestrial herbivores, usually found evidence of long-lived females having a larger fitness than short lived ones (but see [7]). On the other hand, males are usually not studied as estimating their fitness is harder and often demands genetic analysis to reliably infer offspring's paternity.

The Southern Elephant Seal (*Mirounga leonina*) is the most dimorphic and polygynous mammal among extant species. The biology of this elusive carnivore, which can spend up more than 80% of its lifetime at sea [20], means that seals are not observable most of the time. Moreover, when ashore during the breeding season, males fight to hold harems of numerous females. Most males never reproduce but a few mates with a large number of females [21]. Body size is a critical component for holding and fighting over a harem. Since these seals can grow all their life [22], breeding for a male depends on surviving long enough to reach an adequate size to be able to hold a harem. We may therefore expect a strong relationship between longevity and fitness in males [23]. Assessing longevity in the male Southern Elephant Seal using mark-recapture methods is extremely demanding: less than 4% of a cohort may survive up to 9 years-old [24], when they may become harem-holders [25]. Moreover the question of why these males manage to outlive the others is left open since their at-sea behaviour remains elusive.

One way to overcome this problem is to rely on indirect methods to infer the at-sea ecology of these animals. In this

respect, the study of marine mammals has greatly benefited from the use of stable isotopes [26]. Carbon ( $^{13}\text{C}$ ) and nitrogen ( $^{15}\text{N}$ ) stable isotope ratio are the most commonly used elements in isotopic dietary studies. Carbon (nitrogen) stable isotopes can provide information about the diet's geographical origin (trophic position) of a consumer [27]. In the Southern Ocean, the existence of a latitudinal gradient in carbon stable isotopes across water masses [28–30] allows researchers to infer where elephants seals have been foraging prior to hauling out [31]. The temporal window reflected in stable isotope values depends on the sampled tissue [32]. Therefore, questions that may be addressed with stable isotopes are tied to the careful choice of an appropriate tissue.

Stable isotopic measurement of tissues that are metabolically inert after synthesis, such as teeth or baleen, can yield information on the ecology of marine mammals over their whole life [33–37]. Incremental tissues of teeth may further allow age estimation [38–40]. Measuring stable isotopes in teeth may permit to investigate the ecological correlates of longevity. In the present work, we studied the influence of foraging strategy, as inferred from carbon stable isotopes measured in tooth, on the individual lifespan of male Southern Elephant Seal breeding on îles Kerguelen, Southern Ocean. Bailleul *et al.* [31] found that males from îles Kerguelen were mainly foraging either in Subantarctic waters (mostly the Kerguelen Plateau) or on the Antarctic Plateau (see Figure S1). In a previous study [41], we investigated the ontogeny of foraging behaviour. Here we investigated whether the observed dual strategy affects the longevity of males Southern Elephant Seals.

## Results

### Growth Mixture Modelling

Bailleul *et al.* [31] investigated the foraging behaviour of juveniles males using both remote-sensing tags and blood carbon isotopes. Blood  $\delta^{13}\text{C}$  values for young small-sized males had a unimodal distribution while there was evidence of a bimodal distribution for older large-sized males. Dentin  $\delta^{13}\text{C}$  values had a unimodal distribution for individuals younger than 3 years old, and a clear bimodal distribution after that age (Figures 1 and 2). However, this approach only described the growth pattern of  $\delta^{13}\text{C}$  conditional on a foraging strategy. Furthermore it made the restrictive assumption that the growth curve *shape* of individuals with the same foraging strategy is identical. However this model was used for descriptive purposes, and below we present the results of an explanatory approach which aimed at identifying ecological correlates of longevity.

### Joint Modelling

We adopted a joint modelling approach for analyzing lifespan [42–47]. We used a hierarchical change-point model [48,49] to describe individual time-series of  $\delta^{13}\text{C}$  values (see Figure 3A), which enabled us to identify an ontogenetic shift between a juvenile stage and an adult one when males were committed to either an Antarctic or a Subantarctic strategy [41]. For the adult stage, the regression slope of  $\delta^{13}\text{C}$  values against age is either close to zero, which means a very stable strategy of foraging in either Subantarctic or Antarctic waters, or negative reflecting the preponderance of foraging in Antarctic waters (see Figure 3A). We estimated 4 individual parameters describing a broken-stick model and subsequently used them as predictors in an Accelerated Failure Time (AFT) model [50,51].

With an AFT, survival times are directly modelled, which eases the interpretations of coefficients; but a parametric distribution family must be specified [50,51] in contrast to the semi-parametric Cox Proportional Hazard (PH) model [52]. We nevertheless opted for the AFT model and assumed survival times to follow a Weibull distribution [43], whose core assumption is a monotonic hazard function [53], which seems reasonable for these data (Figure 4B and Figure S2). We embedded the AFT within a hierarchical change-point model for  $\delta^{13}\text{C}$  values [41] (See the annotated code in Supplementary Materials).

The best survival model was the joint change-point/survival model (Table 1), but the model fit as assessed using Kolmogorov-Smirnov test was poor ( $D=0.57$ ,  $p<0.001$ , Figure S3). Further investigations also revealed modest to strong correlations ( $>0.6$ ) between the  $\beta_{k_{e[1,4]}}$  (Figure S4). Close inspection of the individual-specific parameters  $a_{k_{e[1,4]}}$  revealed that the only parameter to truly covary with longevity was  $a_4$ , the slope after the ontogenetic shift (Figure 4B). This was further checked and confirmed with Stochastic Search Variable Selection [54] (not shown). Hence only the posterior estimate of  $\beta_4$  is reported in Table 2. Since  $\beta_4$  was negative, males with a very stable foraging strategy ( $a_4 \approx 0$ ) had on average a larger life-span than the other males.

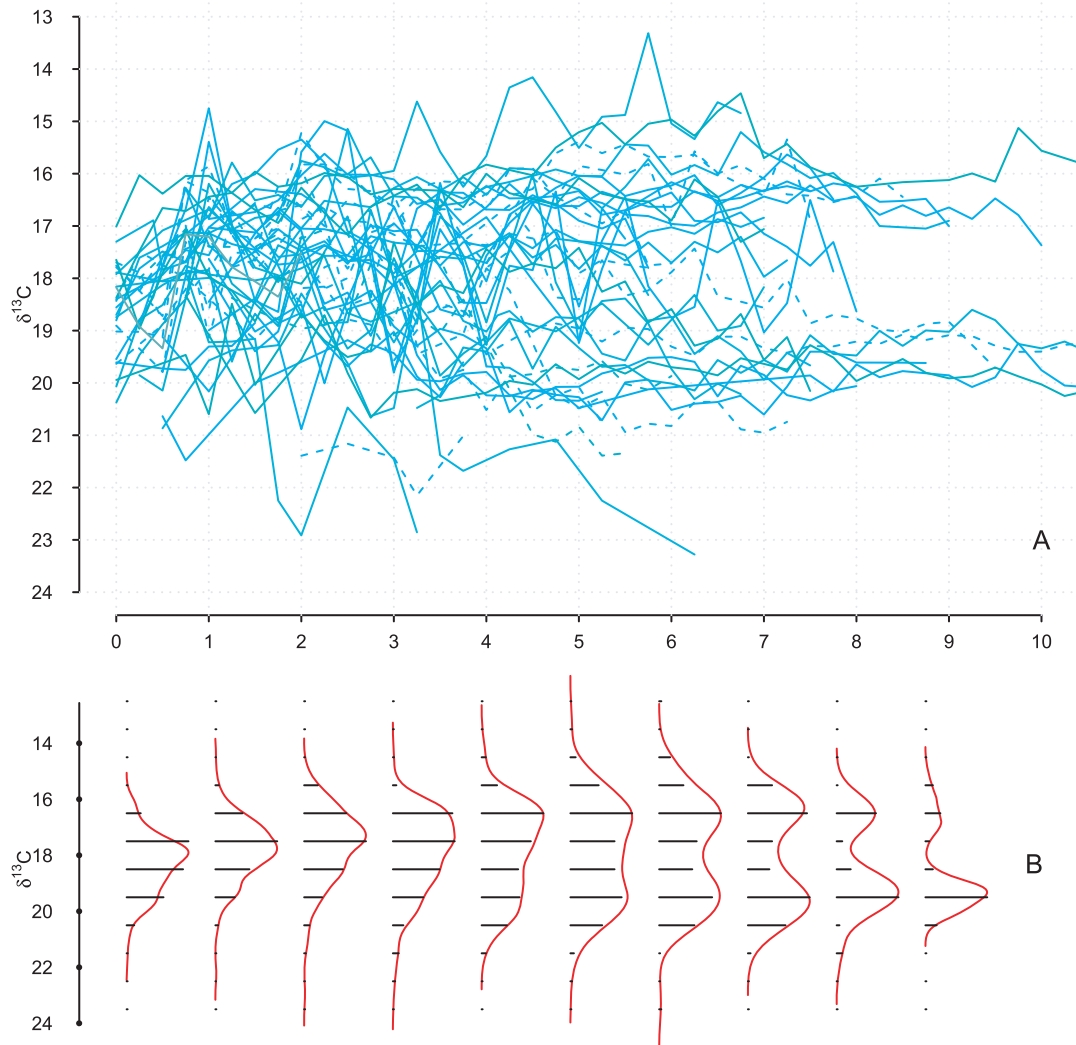
## Discussion

### Ecological correlates of longevity

As expected, male Southern Elephant Seals showed a clear mixture of two foraging strategies as they aged [31,55]. Using carbon stable isotopic measurement from tooth, we found that some males had an Antarctic signature ( $\approx -20 : -19\%$ ), while others had a Subantarctic signature ( $\approx -17 : -16\%$ ). The pattern in Figure 1B suggested that  $\delta^{13}\text{C}$  values reflective of an Antarctic signature increased in proportion over time. Such a pattern may reflect the progressive disappearance of males foraging elsewhere than in Antarctic waters, either because of an ontogenetic shift in foraging behaviour [56] or because of differential survival of males with different foraging strategies. To investigate this matter further, we adopted a joint change-point/survival modelling approach to explicitly relate the age of an individual [39] with a proxy of its foraging behaviour [34,35].

Males foraging in Antarctic waters didn't have a longer longevity than males foraging in the Subantarctic waters. The increasing proportion of Antarctic  $\delta^{13}\text{C}$  values (Figure 1) was more the result of small sample size [57] for advanced age classes and of ignoring within-individual correlation (recall that a seal of a given age can contribute up to 4 isotopic values because of the sampling design, see **Materials & Methods**). A joint modelling approach, which accounted for the longitudinal nature of our data, revealed a relationship between the stability of a foraging strategy and longevity. Seals that exhibited little variation in their tooth  $^{13}\text{C}$  profile were also the most long-lived. A change-point model evidenced a negative correlation between the age at ontogenetic shift and the slope after this shift [41]: seals that had an early shift were constant in their foraging behaviour for the rest of their lives. Thus, this sophisticated modelling approach confirmed what an "eye-ball" analysis suggested: profiles with the smallest isotopic variation were from seals with the longest life-span (Figure 1A). The two modes that progressively appear with age on Figure 1B reflects how seals that became faithful to a foraging strategy early in life lived longer than others. Thus, the two modes in the distribution of  $\delta^{13}\text{C}$  values (Figure 1B) partly arose from the selective disappearance of males with a variable  $\delta^{13}\text{C}$  profile.

This pattern of an early shift in life associated with far-reaching consequences in later-life underscore how crucial are the first years



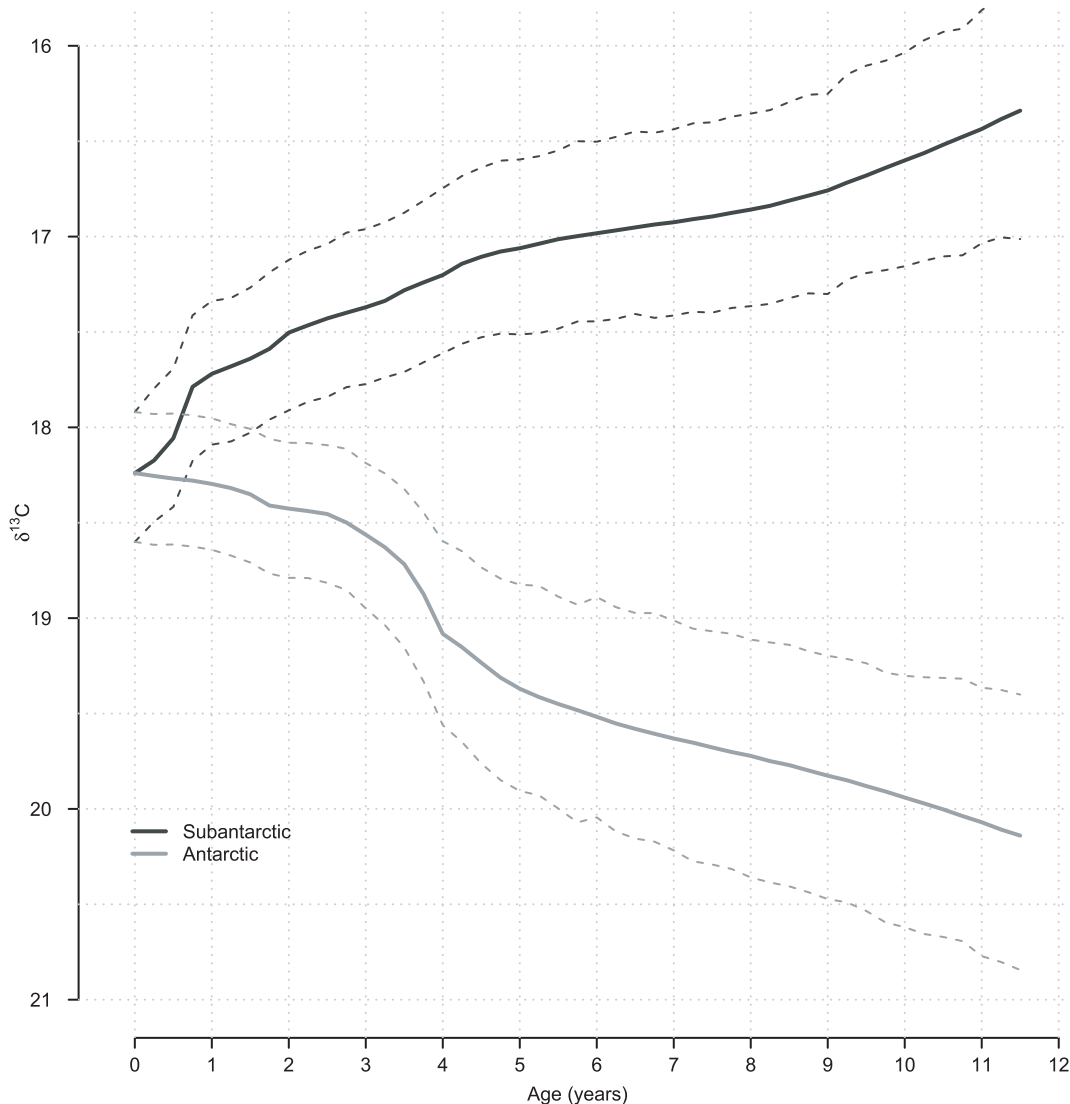
**Figure 1. Spaghetti and density plots of the tooth  $\delta^{13}\text{C}$  values from male Southern Elephant Seals.** The distribution is unimodal up to age 3 but changes to a bimodal distribution afterwards. Observations belonging to the component with the smallest mean are first in a minority but progressively increase in proportion until becoming the majority. doi:10.1371/journal.pone.0032026.g001

of life in this species [58]. There was in fact a small (in magnitude) positive correlation between the (positive) slope before and the (negative) slope after the shift [41]. The positive slope before the shift was expected because weaned pups rely exclusively on maternal milk before weaning. Phociid milk is very rich in lipids [59,60], which are depleted in the heavier carbon isotope [61]. Thus the positive slope before the shift may in part reflect the progressive independence from maternal resources [34,40,62,63]. Pups which became early on independent from maternal resources, were able to forage on their own and adopted a very stable foraging strategy. Those same pups also lived longer than the others, suggesting thereby the potential importance of early life history on latter performances [64–66].

Bradshaw *et al.* [67] studied the fidelity of adult female Southern Elephant Seals to their foraging grounds. Using a measure of overlap between visited zones along at least two consecutive foraging journeys, Bradshaw *et al.* [67] directly evaluated how females seemed to behave according to simple navigation rules, that is how females were “rational” in the sense that their behaviour was predictable. One major finding of this elegant

analysis was the lack of a relationship between mass gain and spatial overlap between two successive foraging trips: females showed fidelity to a foraging ground irrespective of foraging success. Although Bradshaw *et al.* [67] lacked data on long-term survival and lifetime reproductive success of these females, which were of the same age-period-cohort to limit potential confounders, they speculated that the stability shown by these females may have arisen in their early life. While our study is confined to males, it is in agreement with the results of Bradshaw *et al.* [67]. Despite a cruder spatial resolution compared to tracking data, stable isotopes enabled us to look into the ontogeny of foraging strategy in male Southern Elephant Seals, and thus to evidence how foraging fidelity was associated with longevity.

We were nonetheless surprised that the Antarctic strategy was not associated with an increased life-span. At least for females, an Antarctic strategy may yield higher fitness pay-offs. There is a latitudinal gradient in pup weaning mass with pups born in colonies closer to Antarctica having a larger weaning mass on average than pups born at lower latitude rookeries [68]. As weaning mass correlates with first-year survival [69], this suggests



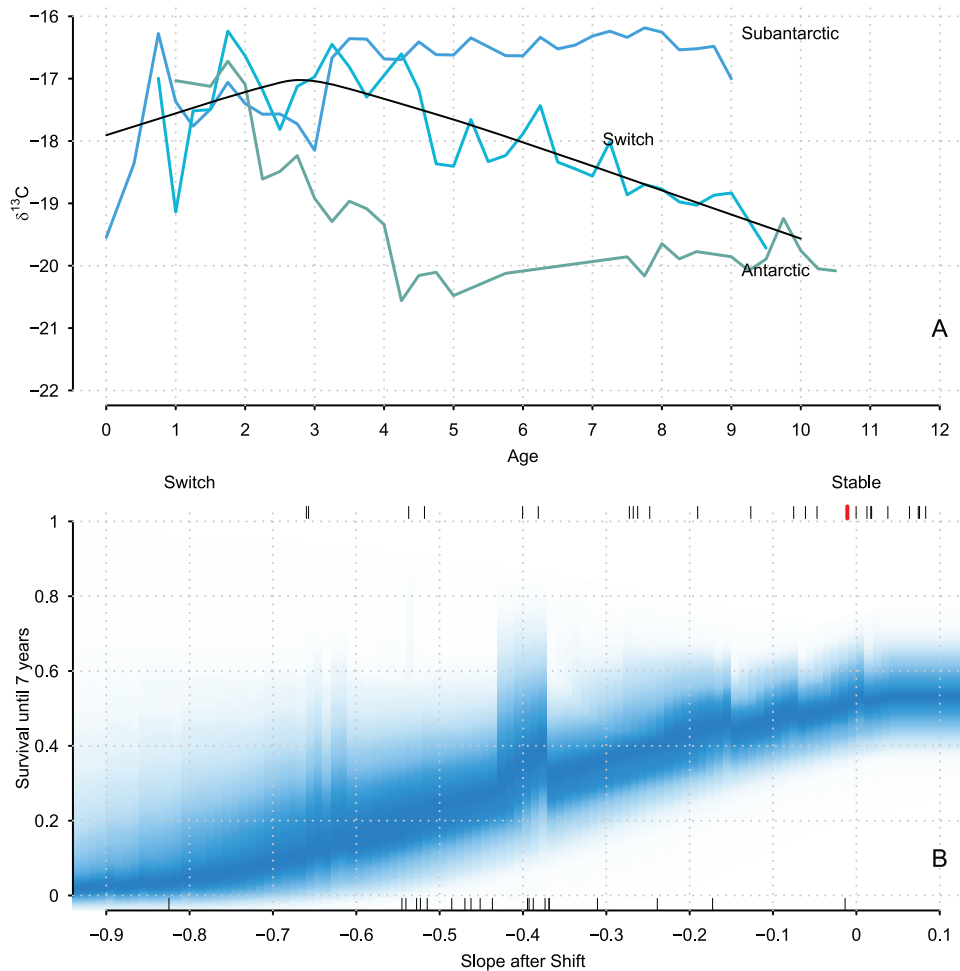
**Figure 2. Mean  $\delta^{13}\text{C}$  values of the two-components growth mixture in relation to Southern Elephant Seal age.** Posterior means along with 95% Highest Probability Density (HPD) intervals are depicted. For advanced age classes (>9 years), this model suggested an increase in mean  $\delta^{13}\text{C}$  values for Subantarctic foragers, and a decrease for Antarctic foragers. This effect seems artefactual in light of Figure 1 where isotopic values are stable after age 9. The artefact results from the restrictive assumption on the growth curve shape (see Methods). doi:10.1371/journal.pone.0032026.g002

that resources in Antarctic waters may be more profitable. Chaigne *et al.* [70] analysed blood stable isotopes of juvenile Southern Elephant Seal males. Their study design was cross-sectional, but Chaigne *et al.* [70] showed that older males, as assessed from their body length, were more likely to forage in Antarctic waters compared to younger ones. They have interpreted this pattern as an ontogenetic shift in foraging grounds, which is consistent with the stable isotope analysis of dentin [41]. Foraging in Antarctic waters thus seems to be favored by bigger males, possibly because of higher fitness pay-offs.

Yet our longevity data did not suggest an increased survival of Antarctic foragers. Unlike females which remained in the marginal sea-ice zone, juvenile Southern Elephant Seal males from Îles Kerguelen readily foraged in the pack ice [55]. Getting trapped in the ice is a potential cause of mortality that males foraging over the Kerguelen Plateau or at the Polar Front do not face [31]. Our present analysis does not point to different foraging grounds

influencing male life-span. The pattern uncovered is one of the benefit of a very stable foraging strategy with no deviation from an early age in life. This pattern may lend support to a spatial familiarity hypothesis [71,72], although a direct experimental test of such an hypothesis is currently not possible with Southern Elephant Seals.

That isotopic profiles covaried with longevity thus suggests that variability in foraging strategy is costly. Such costs may arise from unfamiliarity with novel environments, such as a greater susceptibility to predators, or increased travel costs. A non-exclusive alternative is that some individuals were more able to extract resources efficiently from the environment, either in Antarctic or Subantarctic waters. None of these interpretations suppose a strategy to be superior to the other in terms of fitness return. However, the second interpretation implies that seals which are less efficient to acquire resources may switch between foraging strategies while those which are efficient have no reason



**Figure 3. Survival curve estimated from the joint change-point/AFT model.** The upper panel illustrates the different isotopic profiles observed in our data. A density strip plot of the estimated survival function is depicted on the lower panel to emphasize uncertainty [100,101]. The probability of male Southern Elephant Seals to live up to 7 years, the mean longevity observed in our sample, is depicted as a function of the slope of the isotopic profile after an ontogenetic shift. Seals that had a stable foraging strategy were also long-lived individuals. doi:10.1371/journal.pone.0032026.g003

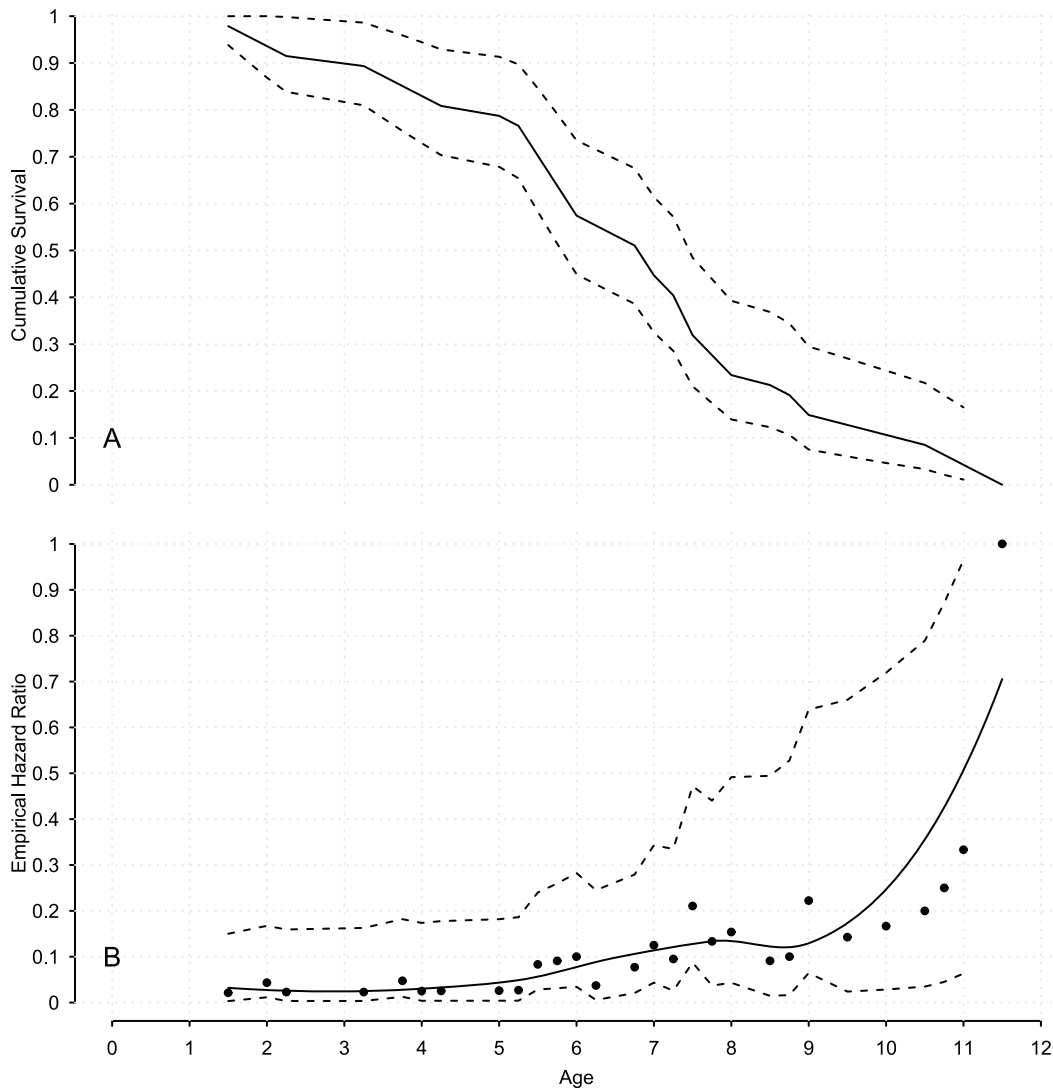
to do so. Under this latter interpretation, the  $\delta^{13}\text{C}$  profile of seals may reflect their 'quality', quality being understood as a static trait that positively correlated with fitness [73]. We chose the term quality over fitness here as the reproductive success of males in our sample is unknown. Yet given the breeding biology of male Southern Elephant Seals, living long enough to grow large and defend a harem is a pre-requisite to contribute offspring to the next generation [23].

### Limitations

A potential confounding factor in our data is that teeth were sampled from dead animal on beaches, thus we had to assume our sample was representative of the larger population of all males on Îles Kerguelen. Assuming otherwise would imply that male found dead on beaches were different than those dying at sea. The average longevity in our sample was 7 years, and only 5 males were older than 10 years (Figure S5). In their study on reproduction costs on Sea Lion Island (52°26'S, 59°05'W), Galimberti *et al.* [25] found only 4 males out of 78 ( $\approx 5\%$ ) to be older than 10 years old, while McCann [74] reported a proportion of  $\approx 22\%$  for South Georgia (54°15'S, 37°05'W). The observed proportion in our sample was 11(4.24)%, compatible with both the

Sea Lion Island and South Georgia estimates. Age in our study was estimated from teeth growth layers: there is an uncertainty associated with age ( $\pm 1$  year). It is, however, very small [40] and cannot reverse the observed pattern. Defining a species' longevity as the time by which 99% of a cohort has died [75], the specific longevity of male Southern Elephant Seals is 13 years [76]. The oldest male in our sample was estimated to be 12 years old, which suggested that our sample did not seem atypical with respect to old age classes.

Of concern may be the lack of fit of the AFT model to the data. Even our best model in term of  $\text{AIC}_c$  did not provide an adequate fit to the data (see Figure S3). Yet it has been argued that the poor predictive ability is an intrinsic feature of survival models with realistic parameter values [77]. Our approach here was explanatory rather than predictive [78]. The joint model clearly captured some aspect of the data unaccounted for by the Null model given its large Akaike weight. Further model checking revealed that this model was overparametrized, but still performed better than the null model despite the penalty for the larger number of (unnecessary) parameters. The mixture model also has a larger likelihood than the null model, but its larger number of parameters put it on a par with the null model (similar Akaike weights). Thus



**Figure 4. Survival analysis of male Southern Elephant Seals.** The upper panel depicts the empirical Kaplan-Meier survival curves [102], with the continuous line representing the mean, and dashed lines a 95% confidence interval. The lower panel illustrates the empirical hazard ratio, along with a loess curve (continuous black line): the assumption of a monotonic hazard is reasonable as hazards are ever increasing. 95% confidence intervals (dashed lines) for the empirical hazard ratio are also represented: these intervals widen with age as the number of individuals at risk decreases in advanced age classes.

doi:10.1371/journal.pone.0032026.g004

the data suggest an effect of the foraging strategy that we seemed to have picked up best with a change-point model.

## Conclusion

Stable isotopes, while lacking the fine scale resolution of tracking data, can reveal surprising ecological features of a species [26]. However, this crudeness may prove a strength: by summarizing a whole foraging trip with a single number, isotopic data provided an integrative measure that can be easily fed into a model specifically tailored to the problem at hand. Using an appropriate tissue, stable isotopes can also provide longitudinal data [33–37].

The explicit modelling of foraging strategy ontogeny in male Southern Elephant Seal via a change-point (or broken-stick) model of  $\delta^{13}\text{C}$  values revealed how long-lived animals were those faithful to a foraging strategy from an early age. This finding emphasizes the importance of early life in life-history trajectories. It also suggests that variability in foraging strategies might be costly for

adult male Southern Elephant Seals from Îles Kerguelen. In other words, faithfulness to a foraging strategy predicted a long-life for males.

Studying of the life-span of wild animals is a difficult endeavour: ecological correlates can be uncovered but a large amount of variation usually remains unaccounted for in the analysis [79]. This is unsurprising in light of all the potential factors, related to fitness or accidental, that may affect an individual throughout its whole life [3,12,80].

## Materials and Methods

### Ethics Statement

The ethics committee of the French Polar Institute (*Institut Paul Emile Victor* - IPEV) approved this study. All animals in this study were cared for in accordance with its guidelines. This study is part of a national research program (no. 109, H. Weimerskirch and the



**Table 1.** Accelerated Failure Time (AFT) model selection.

Model	K	Deviance	AIC <sub>c</sub>	ΔAIC <sub>c</sub>	w <sub>AIC<sub>c</sub></sub>
Joint	6	202.2	215.6	0.0	94.5
Null	2	218.4	222.5	6.9	3.0
Mixture	4	215.6	224.1	9.0	1.4
Random	3	218.3	224.6	9.5	1.1

Four models were considered and we kept a ratio of number of parameters to be estimated to the number of datum close to 8. The Akaike Information Criterion corrected for small sample size (AIC<sub>c</sub>) is reported. ΔAIC<sub>c</sub> is model AIC<sub>c</sub> minus the minimum observed AIC<sub>c</sub>, and w<sub>AIC<sub>c</sub></sub> are model weights. The best model in terms of predictive ability was the joint change-point/survival model.

observatory *Mammifères Explorateurs du Milieu Océanique*, MEMO SOERE CTD 02) supported by the French Polar Institute (IPEV). The approval ID for this study is IPEV research program no. 109, which is evaluated every year by the ethics committee of the French Polar Institute.

**Sample Collection**

Teeth were collected from male elephant seals that died of natural causes on îles Kerguelen (49° 30'S, 69° 30'E), Southern Indian Ocean. Canines grow continuously throughout the whole life of males without closing of the pulp cavity, allowing for age determination [81]. Canines from 47 males were analyzed and sampled for isotopic analysis (see [40] for a full description of age determination and isotopic sampling). Briefly, each tooth was cut longitudinally and observed under diffused light to count growth layers. The alternating pattern of two opaque and two translucent growth layers corresponds to the annual biological cycle of Southern Elephant Seals [39]. Translucent bands are enriched in vitamin D and synthesized when seals are ashore to breed and to molt, while opaque ones are synthesized when at sea [82]. Within a year, a Southern Elephant Seal comes onshore to breed, returns to the sea, then comes onshore to moult and forages once more at sea before the next breeding season. Thus each growth layer was assumed to correspond to one fourth of a year [40]. Each growth layer was sampled for 1 mg of bulk dentin using a Micromill<sup>TM</sup> sampler (ISEM, Université de Montpellier 2).

As a recent study raised concerns about non-linear offsets of organic %C, %N and <sup>13</sup>C after acid treatment [83], we forwent any acid (or demineralization) treatment prior to isotopic measurement. As a result, the measured <sup>13</sup>C is a mixture of organic carbon with a small amount of inorganic carbon. To test the impact of the inorganic fraction, Martin *et al.* [40] compared acid-treated and untreated samples but found no differences (±0.02). Schulting *et al.* [84] found similar <sup>13</sup>C ratios between bulk dentin and collagen, with a lower carbon and nitrogen contents in bulk dentin most

likely due to the mineral fraction. Here we assumed that the impact of the mineral fraction is negligible.

For measurement of carbon stable isotopes and <sup>13</sup>C/<sup>12</sup>C ratio, a total of 1,233 dentin increments over the 47 male teeth were analyzed. Elemental C and N contents (%) and carbon isotope values were measured by dry combustion using a Euro Vector 3000 Elemental Analyzer coupled with a Micromass Optima Isotope Ratio Mass Spectrometre (ISEM, Université de Montpellier 2). Results are expressed in percentage of powder weight (Total C and N) and as δ<sup>13</sup>C (‰) with respect to the Vienna-Pee Dee Belemnite standard using the conventional delta notation:

$$\delta = 1000 \times \left( \frac{R_{sample}}{R_{standard}} - 1 \right)$$

where *R<sub>sample</sub>* and *R<sub>standard</sub>* refer to the <sup>13</sup>C/<sup>12</sup>C ratios of sample and standard, respectively. Analytical precision was better than 0.20‰. We used <sup>13</sup>C/<sup>12</sup>C ratio thresholds of bone and tooth collagen (2.9 to 3.6) as criteria for the identification of diagenetic alteration [85]; assuming that total dentin, whose organic phase is mainly collagen and water [86], has the same <sup>13</sup>C/<sup>12</sup>C ratio than bone and tooth collagen. From the 1,233 analyzed sampled, 118 were discarded, yielding a final sample size of 1,115 isotopic values from 47 males. Given the alternating pattern of tooth growth layers, up to 4 isotopic measurements were available for a given year of life.

**Growth Mixture Modelling**

Data were first analyzed using growth mixture models [87]. This approach respects the longitudinal nature of our data, and is superior to simple mixture models. The aim of this modelling exercise was primarily descriptive, that is we aimed at summarizing our data. Bailleul *et al.* [31] found that males from îles Kerguelen were mainly foraging either in Subantarctic waters (mostly the Kerguelen Plateau) or on the Antarctic Plateau (see

**Table 2.** Summary statistics for the parameters of the joint change-point/survival model.

Parameters	Median	2.5%	97.5%	Interpretation
Γ	3.3	2.6	4.2	Shape of the Weibull distribution
β <sub>0</sub>	-6.7	-8.6	-5.0	Intercept
β <sub>4</sub>	-1.4	-2.8	-0.1	Slope after shift

doi:10.1371/journal.pone.0032026.t002



Figure S1). We thus assumed a two-components mixture. For the  $j^{th}$  male, we modelled its blood isotopic signature at age  $t$  as:

$$\delta^{13}C_{j,t} = \Lambda_{j,1} + \alpha_{t,k} \times e^{\Lambda_{j,2}} + \epsilon_{j,t} \quad (1)$$

where

- $\epsilon_{j,t}$  is a normally distributed residual term with 0 mean and variance  $\sigma_{res}^2$
- $\Lambda_{j,1}$  is the isotopic value at birth
- $\Lambda_{j,2}$  is the logarithm of the absolute isotopic difference between 12 and 0 years
- $\alpha_{t,1}$  are weights describing the growth curve for individuals foraging in Subantarctic waters
- $\alpha_{t,2}$  are weights describing the growth curve for individuals foraging in Antarctic waters
- $k$  is a latent indicator variable of the foraging strategy

For model identification purposes, we constrained  $\alpha_{0,k_{in1,2}} = 0$ ,  $\alpha_{12,1} = 1$  and  $\alpha_{12,2} = -1$ . In addition, to circumvent any label switching issues, we further constrained the isotopic value of Antarctic foragers to be lower than that of Subantarctic foragers. Practically, we allowed the batch of weight coefficients of the first component of the mixture to be positive ( $0 \leq \alpha_{t,1} \leq 1$ ) but forced the second batch to be negative ( $-1 \leq \alpha_{t,2} \leq 0$ ). Finally, we assumed the growth curves to be isotonic: for all age  $t$ ,  $\alpha_{t,1} \leq \alpha_{t+1,1}$  and  $\alpha_{t,2} \geq \alpha_{t+1,2}$ . Isotonicity translates an assumption about isotopic equilibration to a foraging habitat signature. A crucial assumption of this approach is that the growth curve *shape* of individuals with the same foraging strategy is identical, which is not reasonable given the variety of profiles observed in Figure 1. To relax this assumption, we used a hierarchical random change-point model [41].

### Joint Modelling

Change-point models aim at finding an abrupt rupture in a time-series. The time-series is assumed to be the juxtaposition of piece-wise linear homogeneous segments, each segment separated from the next by a change-point. These models are very flexible as they allow specifying different probability distributions to describe different parts of a time series. Different curve shapes can thus be generated. Change-point models thus seem appropriate to describe ontogenetic shifts [41,56]. A time-series is summarized in 4 parameters: a value at the change-point, the timing of the change-point, and a slope before and after the change-point. In a previous paper [41], we used a hierarchical change-point model to describe individual time-series of  $^{13}C$  measurement in Southern Elephant Seal teeth and found evidence of ontogenetic shifts. Here, we assessed the impact of these ontogenetic shifts on longevity.

Because teeth were sampled from dead animals that were subsequently aged, all survival times are observed: there is no censoring in the data. Denoting  $T_j$  the survival time of the  $j^{th}$  male, we assumed the  $T_j$  to follow a Weibull distribution of parameters  $r$  and  $\lambda_j$ :

$$T_j \sim Weibull(r, \lambda_j) \quad (2)$$

$$\log(\lambda_j) = \beta_0 + \beta_1 \times a_{1,j} + \beta_2 \times a_{2,j} + \beta_3 \times a_{3,j} + \beta_4 \times a_{4,j} \quad (3)$$

- where  $\begin{cases} a_{1,j} = & \text{isotopic value at change point} \\ a_{2,j} = & \text{slope before the change point} \\ a_{3,j} = & \text{logarithm of the age at change point} \\ a_{4,j} = & \text{slope after the change point} \end{cases}$

The shape parameter  $r$  controls the hazard rate with  $r > 0$  (resp.  $< 0$ ) describing an increasing (resp. decreasing) hazard with time. With our data, we expected  $r > 0$  (Figure 4). The parameters  $\beta_{1,2,4}$  then quantify the association between foraging location (via  $\delta^{13}C$ ) and longevity. The parameter  $\beta_3$  captures the relation between age at ontogenetic shift and longevity. The parameter we are particularly interested in is  $\beta_4$  as it reflects the correlation between the stable foraging habitat of adults and their longevity. In the AFT, a positive  $\beta \times x$ , where  $x$  is the covariate value, accelerates the occurrence of the event (death), while a negative value retards it. A negative  $\beta_4$  means that individuals foraging in two different water masses (negative slope) die earlier than those males which have a very stable strategy (null slope). The joint modelling approach is especially suited here as it makes use of all the available data and the Bayesian framework guarantees that uncertainties in estimating the  $a_{k_{e[1:4]j}}$  are taken into account [43,46].

To assess the appropriateness of our joint model, we compared it with 3 other AFT survival models:

- a null model with with no individual-level covariate;
- a random-effect model wherein an individual-specific deviation from the mean  $\delta^{13}C$  value was incorporated as a covariate for the AFT model; and lastly
- a mixture model wherein each male was first assigned to a group depending on its mean  $\delta^{13}C$  value and then group membership was included as a covariate for the AFT model.

Strictly speaking, both the random and mixture models are also joint models, as time-series of  $\delta^{13}C$  values were used to derived predictors for the survival analysis. Model comparison were done using the Akaike Information Criterion with a small sample correction,  $AIC_c$  [88]. Our sample size is modest ( $N = 47$ ) and the most complex AFT model considered had 6 parameters, keeping the ratio of sample size to parameter number above  $\approx 8$  which is slightly below the recommended 10 [53]. The goodness-of-fit of the selected model was checked by comparing the predicted longevity with the observed one using Kolmogorov-Smirnov test. Finally, we investigated in a preliminary analysis whether males born before and after the 1970s population crash [89] had different longevity and found none (Likelihood Ratio Test:  $\chi^2_1 = 0.03$ ,  $p = 0.86$ ).

Growth layer synthesized while seals were ashore were kept in all analyses. These layers may differ from the others since Southern Elephant Seals fast on land. Retaining these layers may add measurement error linked to physiological processes. We then compared for each seal the distribution of isotopic values measured in dentin synthesized ashore *versus* at-sea with a Kolmogorov-Smirnov test. Except for one individual, there was no statistically significant differences (See Table S1). Excluding this individual did not change our results. Balasse *et al.* [90] estimated the isotopic equilibration of dentin after diet change to take between 1 to 4 months in cattle (*Bos taurus*). This time-span is commensurate with, if not longer than, the typical haul-out duration of a Southern Elephant Seal. Assuming similar equilibration time for cattle and elephant seals, this may explain

why no statistically significant differences were found (See Table S1).

## Software

We used *winBUGS* [91] called from *R* [92] with the package *R2WinBUGS* [93]. Weakly informative priors were used [94,95]. For the growth mixture model, we used a uniform prior for the residual variance; Normal priors for regression parameters on the natural scale; the default Student-*t* prior of [95] for regression parameters on a logarithmic scale; and a beta(2,2) prior for the mixing proportion. We used the SVD prior of Tokuda *et al.* [96] for the covariance matrix controlling the  $\Lambda_j$ : random orthogonal matrices were generated as described in Anderson *et al.* [97]. Three chains were initialized with overdispersed starting values. After appropriate burn-in (40,000 iterations) and thinning of the chains (1 value every 10 iterations stored), convergence was assessed using the Gelman-Rubin convergence diagnostic [98] with the *coda* package [99]. For the joint model, Authier *et al.* [41] detailed the hierarchical change-point model fitted to the isotopic data. We used for the AFT model the default Student-*t* prior of [95] for the parameter  $\beta_{k_{[1:4]}}$ , and a uniform prior bounded between 0 and 10 for *r*. Three chains were initialized with overdispersed starting values. After appropriate burn-in (200,000 iterations) and thinning of the chains (1 value every 200 iterations stored), convergence was assessed using the Gelman-Rubin convergence diagnostic [98] with the *coda* package [99]. Unless stated otherwise, posterior mean and standard error of the mean are reported, either with its standard error ( $\pm se$ ) or with 95% Highest Probability Density (HPD) intervals (Mean<sub>(2.5%,97.5%)</sub>). Inferences are based on a posterior sample of 3,000 iterations. Annotated *BUGS* code is available in Text S1 (Growth Mixture Models) and Text S2 (Joint Change-point/Survival Model).

## Supporting Information

**Figure S1 Satellite tracking of Southern Elephant Seal males breeding on Îles Kerguelen.** Examples of 24 tracks are represented (solid blue lines) to illustrate the different strategies: males mainly forage in the Antarctic Zone, on the Kerguelen Plateau or in Subantarctic waters (waters lying between the Sub-Antarctic Front and the Southern Antarctic Circumpolar Front). Îles Kerguelen (Ker), and the Antarctic coastline's contour are depicted in black, and while the 2000 metres isobath is depicted in light grey. Dotted lines symbolized fronts [103], within the Southern Ocean: SubTropical Front (STF), Sub-Antarctic Front (SAF), Polar Front (PF) and Southern Antarctic Circumpolar Front (SACCF). Marginal histograms of localisations are represented on the side to illustrate the different strategies. (EPS)

**Figure S2 Checking the appropriatedness of the Accelerated Failure Time model.** With the BUGS parametrization:

$$T_j \sim \text{Weibull}(r, \lambda_j)$$

## References

1. Beeton M, Pearson K (1901) On the Inheritance of the Duration of Life, and on the Intensity of Natural Selection in Man. *Biometrika* 1: 50–89.
2. Müller H, Carey J, Wu D, Liedo P, Vaupel J (2001) Reproductive Potential Predicts Longevity of Female Mediterranean Fruitflies. *Proceedings of the Royal Society of London series B* 268: 445–450.
3. Kannisto V (2001) Frailty and Survival. *Genus* 47: 101–118.
4. Thomson D, Cooch E, Conroy M (2009) Modeling Demographic Processes in Marked Populations. Springer, 1st edition.
5. Wasser D, Sherman P (2010) Avian Longevities and Their Interpretation under Evolutionary Theories of Senescence. *Journal of Zoology* 280: 103–155.
6. Berubé C, Festa-Bianchet M, Jørgenson J (1999) Individual Differences, Longevity, and Reproductive Senescence in Big Horn Ewes. *Ecology* 80: 2554–2565.
7. Descamps S, Boutin S, Berteaux D, Gaillard JM (2006) Best Squirrels Trade a long Life for an early Reproduction. *Proceedings of the Royal Statistical Society London Series B* 273: 2369–2374.

$$\log(\lambda_j) = \beta_0 + \beta_1 \times a_{1,j} + \beta_2 \times a_{2,j} + \beta_3 \times a_{3,j} + \beta_4 \times a_{4,j}$$

The hazard function is:  $h(t) = \lambda r t^{r-1}$ , and the survival function is:  $S(t) = \exp(-\lambda t^r)$ . An empirical test for the Weibull distribution is provided by the plot of the estimate of  $\ln(-\ln(S(T_j)))$  versus  $\ln(T_j)$ , which should give a straight line:  $\ln(-\ln(S(t))) = r * \ln(t) + \ln(\lambda)$ . (EPS)

**Figure S3 Goodness-of-fit of the joint change-point/survival model.** The selected model, although being the best in term of predictive performance among the set of competing model, could be still improved. A Kolmogorov-Smirnoff goodness-of-fit test indicated that the considered covariates were not a sufficient set for these data ( $D=0.57$ ,  $p < 0.001$ ). (EPS)

**Figure S4 Correlations between the predictors of the Accelerated Failure Time survival model.** The large correlations means that these parameters are not independent. Further model checking revealed that only  $\beta_4$  covaried with longevity. (EPS)

**Figure S5 Histogramm of the observed longevity of males included in the sample.** (EPS)

**Table S1 Kolmogorov-Smirnoff tests for comparing dentin layers grown onshore or at sea.** For only one individual was there a significant difference. Removing this individual did not change the analysis. (XLS)

**Text S1 WinBUGS code to fit the Growth Mixture Model.** (TXT)

**Text S2 WinBUGS code to fit the joint Accelerated Failure Time\Change-point Model.** (TXT)

## Acknowledgments

The authors wish to thank all fieldworkers that have collected data since the first mission on Îles Kerguelen. In particular, the authors would like to thank Nory El-Ksabi and Quentin Delorme. We thank the Museum National d'Histoire Naturelle (Paris) for kindly providing teeth collected before the population crash. We thank Anne-Cécile Dragon for helpful comments on an earlier version of the manuscript and for providing Figure S1. We also thank two anonymous reviewers and the Academic Editor, André Chiaradia, for constructive comments that greatly improved the manuscript both in content and in form. This is publication ISE-M no. ISEM 2012-012.

## Author Contributions

Conceived and designed the experiments: IB CG. Performed the experiments: IB CM AP. Analyzed the data: MA. Contributed reagents/materials/analysis tools: CM IB CG. Wrote the paper: MA IB CG.

8. Gaillard JM, Festa-Bianchet M, Delorme D, Jorgensen J (2000) Body Mass and Individual Fitness in Female Ungulates: Bigger is not always Better. *Proceedings of the Royal Society of London Series B* 267: 471–477.
9. Kruuk L, Clutton-Brock T, Slate J, Pemderton J, Brotherstone S, et al. (2000) Heritability of Fitness in a wild Mammal Population. *Proceedings of the National Academy of Sciences of the USA* 97: 698–703.
10. Weladji R, Gaillard J, Yoccoz N, Holland O, Mysterud A, et al. (2006) Good Reindeer Mother Live Longer and Become Better in Raising Offspring. *Proceedings of the Royal Society London Series B* 273: 1239–1244.
11. Pettorelli N, Durant S (2007) Longevity in Chettahs: the Key to Success. *Oikos* 116: 1879–1886.
12. Kjellander P, Gaillard J, Hewison M, Liberg O (2004) Predation Risk and Longevity Influence Variation in Fitness of Female Roe Deer (*Capreolus capreolus* L.). *Proceedings of the Royal Society of London B* 271: S338–S340.
13. Millar J, Zammuto R (1983) Life-Histories of Mammals: an Analysis of Life Tables. *Ecology* 64: 631–635.
14. Cam E, Link W, Cooch E, Monnat JY, Danchin E (2002) Individual Covariation in Life-History Traits: Seeing the Trees Despite the Forests. *American Naturalist* 159: 96–105.
15. Brommer J, Gustafsson L, Pietiäinen H, Merilä J (2004) Single-Generation Estimates of Individual Fitness as Proxies for Long-Term Genetic Contribution. *American Naturalist* 163: 505–517.
16. Link W, Cooch E, Cam E (2002) Model-Based Estimation of Individual Fitness. *Journal of Applied Statistics* 29: 207–224.
17. Beauplet G, Guinet C (2007) Phenotypic Determinants of Individual Fitness in Female Fur Seals: Larger is Better. *Proceedings of the Royal Society of London series B* 274: 1877–1883.
18. Hamel S, Côté S, Gaillard J, Festa-Bianchet M (2009) Individual Variation in Reproductive Costs of Reproduction: High-Quality Females Always Do Better. *Journal of Animal Ecology* 78: 143–151.
19. Hamel S, Gaillard J, Yoccoz N, Loison A, Bonenfant C, et al. (2010) Fitness Costs of Reproduction Depend on Life Speed: Empirical Evidence from Mammalian Populations. *Ecology Letters* 13: 915–935.
20. McIntyre T, de Bruyn P, Ansoorge I, Bester M, Bornemann H, et al. (2010) A Lifetime at Depth: Vertical Distribution of Southern Elephant Seals in the Water Column. *Polar Biology* 33: 1037–1048.
21. Galimberti F, Boitani L, Sanvito I (2002) Measure of reeding Inequality: a Case Study in Southern Elephant Seals. *Canadian Journal of Zoology* 80: 1240–1249.
22. McLaren I (1993) Growth in Pinnipeds. *Biological Reviews* 68: 1–79.
23. Jones E (1981) Age in Relation to Breeding Status of the Male Southern Elephant Seal, *Mirounga leonine* (L.), at Macquarie Island. *Australiana Wildlife Research* 8: 327–334.
24. Pistorius P, Bester M, Kirkman S (1999) Survivorship of a Declining Population of Southern Elephant Seals, *Mirounga leonina*, in relation to Age, Sex and Cohort. *Oecologia* 121: 201–211.
25. Galimberti F, Sanvito S, Braschi C, Boitani L (2007) The Costs of Success: Reproductive Effort in Male Southern Elephant Seals (*Mirounga leonina*). *Behavioural Ecology and Sociobiology* 62: 159–171.
26. Newsome S, Clementz M, Koch P (2010) Using Stable Isotope Biogeochemistry to Study Marine Mammal Ecology. *Marine Mammal Science* 26: 509–572.
27. Kelly J (2000) Stable Isotopes of Carbon and Nitrogen in the Study of Avian and Mammalian Trophic Ecology. *Canadian Journal of Zoology* 78: 1–27.
28. Bentele I, Fontugne M, Descolas-Gros C, Girardin C, Mariotti A, et al. (1998) Carbon Isotopic Fractionation by Phytoplankton in the Southern Indian Ocean: Relationship between  $\delta^{13}\text{C}$  of Particulate Organic Carbon and Dissolved Carbon Dioxide. *Journal of Marine Systems* 17: 39–58.
29. Rau G, Takahashi T, Des Marais D (1989) Latitudinal Variation in Plankton  $\delta^{13}\text{C}$ : Implications for  $\text{CO}_2$  and Productivity in Past Oceans. *Nature* 341: 516–518.
30. Trull T, Armand L (2001) Insight into Southern Ocean Carbon Export from the  $\delta^{13}\text{C}$  of Particles and Dissolved Inorganic Carbon using the SOIREE Iron Release Experiment. *Deep-Sea Research Part II* 48: 2655–2680.
31. Bailleul F, Authier M, Ducatez S, Roquet F, Charassin JB, et al. (2010) Looking at the Unseen: Combining Bio-logging and Stable Isotopes to Reveal a Shift in the Ecological Niche of a Deep-Diving Predator. *Ecography* 33: 709–719.
32. Tieszen L, Boutton T, Tesdahl K, Slade N (1983) Fractionation and Turnover of Stable Carbon Isotopes in Animal Tissue: Implications for  $\delta^{13}\text{C}$  analysis of diet. *Oecologia* 57: 32–37.
33. Bentele I, Martín C, Mate B, Mayzaud P, Siret D, et al. (2011) The Foraging Ecology of Mediterranean Fin Whales in a Changing Environment elucidated by Satellite Tracking and Baleen Plate Stable Isotopes. *Marine Ecology Progress Series* 438: 285–302.
34. Hobson K, Sease J (1998) Stable Isotope Analyses of Tooth Annuli Reveal Temporal Dietary Records: an Example Using Steller Sea Lions. *Marine Mammal Science* 14: 116–129.
35. Mendes S, Newton J, Reid R, Zuur A, Pierce G (2007) Stable Carbon and Nitrogen Isotope Ratio Profiling of Sperm Whale Teeth Reveals Ontogenetic Movements and Trophic Ecology. *Oecologia* 151: 605–615.
36. Newsome S, Emier M, Monson D, Fogel M (2009) Retrospective Characterization of Ontogenic Shifts in Killer Whale Diets via  $\delta^{13}\text{C}$  and  $\delta^{15}\text{N}$  Analysis of Teeth. *Marine Ecology Progress Series* 374: 229–242.
37. Valenzuela L, Sironi M, Rowntree V, Seger J (2009) Isotopic and Genetic Evidence for Culturally Inherited Site Fidelity to Feeding Grounds in Southern Right Whales *Eubalaena australis*. *Molecular Ecology* 18: 782–791.
38. Hoffman J, Hanson N, Forcada J, Trathan P, Amos W (2010) Getting Long in the Tooth: a Strong Positive Correlation between Canine Size and Heterogeneity in Antarctic Fur Seal *Arctocephalus gazella*. *Journal of Heredity* 101: 527–538.
39. Laws R (1952) A New Method of Age Determination for Mammals. *Nature* 169: 972–974.
40. Martin C, Bentele I, Steedlandt S, Guinet C (2011) Stable Carbon and Nitrogen Isotope Variations in Canine Dentin Growth Layers of Kerguelen Southern Elephant Seals. *Marine Ecology Progress Series* 439: 295–305.
41. Authier M, Martin C, Ponchon A, Steedlandt S, Bentele I, et al. (accepted) Breaking the Sticks: a Hierarchical Change-Point Model for Estimating Ontogenetic Shifts with Stable Isotope Data. *Methods in Ecology and Evolution*.
42. Gao F, Miller J, Xiong C, Beiser J, Gordon M, et al. (2011) A Joint-Modelling Approach to Assess the Impact of Biomarker Variability on the Risk of Developing Clinical Outcome. *Statistical Methods and Applications* 20: 83–100.
43. Guo X, Carlin B (2004) Separate and Joint Modeling of Longitudinal and Event Time Data Using Standard Computer Packages. *The American Statistician* 58: 1–9.
44. Liang L, Huang D, Brecht M, Hser Y (2009) Differences in Mortality among Heroin, Cocaine, and Methamphetamine Users: a Hierarchical Bayesian Approach. *Journal of Drug Issues* 40: 121–140.
45. Nguti R, Burzykowski T, Rowland J, Renard D, Janssen P (2005) Joint Modelling of Repeated Measurements and Event Time: Application to Performance Traits and Survival of Lambs Bred in sub-humid Tropics. *Genetics Selection Evolution* 37: 175–197.
46. Horrocks J, van Den Heuvel M (2009) Prediction of Pregnancy: a Joint Model for Longitudinal and Binary Data. *Bayesian Analysis* 4: 523–538.
47. Vonesh E, Greene T, Schluchter M (2006) Shared Parameter Models for the Joint Analysis of Longitudinal Data and Event Time. *Statistics in Medicine* 25: 143–163.
48. Beckage B, Joseph L, Belisle P, Wolfson DB, Platt WJ (2007) Bayesian Change-Point Analyses in Ecology. *New Phytologist* 174: 456–467.
49. Ghosh P, Vaidya F (2007) Random Change-point Modelling of HIV Immunologic Responses. *Statistics in Medicine* 26: 2074–2087.
50. Bradburn M, Clark T, Altman D (2003) *Survival Analysis Part II: Multivariate Data Analysis - an Introduction to Concept and Methods*. British Journal of Cancer 89: 431–436.
51. Swindell W (2009) Accelerated Failure Time Models Provide a Useful Statistical Framework for Aging Research. *Experimental Gerontology* 44: 190–200.
52. Cox D (1972) Regression Models and Life Tables. *Journal of the Royal Statistical Society of London Series B* 34: 187–220.
53. Bradburn M, Clark T, Altman D (2003) *Survival Analysis Part III: Choosing a Model and Assessing its Adequacy and Fit*. *British Journal of Cancer* 89: 605–611.
54. O'Hara R, Sillanpää M (2009) A Review of Bayesian Variable Selection Methods: What, How and Which. *Bayesian Analysis* 4: 85–118.
55. Bailleul F, Charassin JB, Ezraty R, Girard-Ardhuin F, McMahon C, et al. (2007) Southern Elephant Seals from Kerguelen Islands Confronted by antarctic Sea Ice: changes in Movements and in Diving Behaviour. *Deep Sea Research Part II* 54: 343–355.
56. Werner E, Gilliam J (1984) The Ontogenetic Niche and Species Interactions in Size Structured Populations. *Annual Review of Ecology and Systematics* 15: 393–425.
57. Wainer H (2007) The Most Dangerous Equation. *American Scientific* 95: 249–256.
58. McMahon C, Bester M, Burton H, Hindell M, Bradshaw C (2005) Population Status, Trends and a re-Examination of the Hypotheses Explaining the Recent Declines in the Southern Elephant Seal *Mirounga leonina*. *Mammal Review* 35: 82–100.
59. Carlini A, Márquez M, Soave G, Vergani V, Ronayne de Ferrer P (1994) Southern Elephant Seals, *Mirounga leonina*: Composition of Milk during Lactation. *Polar Biology* 14: 37–42.
60. Hindell M, Bryden M, Burton H (1994) Early Growth and Milk-Composition in Southern Elephant Seals (*Mirounga-leonina*). *Australian Journal of Zoology* 14: 723–732.
61. DeNiro M, Epstein S (1977) Mechanism of Carbon Isotope Fractionation associated with Lipid-Synthesis. *Science* 197: 261–263.
62. Martin P (1984) The Meaning of Weaning. *Animal Behaviour* 32: 1257–1259.
63. Polischuk S, Hobson K, Ramsay M (2001) Use of Stable-Carbon and -Nitrogen Isotopes to Assess Weaning and Fasting in Female Polar Bears and their Cubs. *Canadian Journal of Zoology* 79: 499–511.
64. Aubry L, Cam E, Koons D, Monnat J, Parvard S (2011) Drivers of Age-Specific Survival in a Long-Lived Seabird: Contributions of Observed and Hidden Sources of Heterogeneity. *Journal of Animal Ecology* 80: 375–383.
65. Cam E, Monnat JY, Hines J (2003) Long-Term Fitness Consequences of Early Conditions in the Kittiwake. *Journal of Animal Ecology* 72: 411–424.
66. Lindström J (1999) Early Development and Fitness in Birds and Mammals. *Trends in Ecology and Evolution* 14: 343–348.

67. Bradshaw C, Hindell M, Sumner M, Michael K (2004) Loyalty Pays: Potential Life History Consequences of Fidelity to Marine Foraging Regions by Southern Elephant Seals. *Animal Behaviour* 68: 1349–1360.
68. Burton R, Arnborn T, Bester M, Vergani D, Wilkinson I (1997) Antarctic Communities - Species Structure and Survival, Cambridge University Press, chapter Significant Differences in Weaning Mass of Southern Elephant Seals from Five sub-Antarctic Islands in Relation to Population Declines. . pp 335–338.
69. McMahon C, Burton H, Bester M (2003) A Demographic Comparison of two Southern Elephant Seal Populations. *Journal of Animal Ecology* 72: 61–74.
70. Chaigne A, Authier M, Richard P, Chérel Y, Guinet C (2011) Shift in Foraging Grounds and Diet Broadening during Ontogeny in Southern Elephant Seals from Kerguelen Islands. Technical report, Centre d'Études Biologiques de Chizé.
71. Metzgar L (1967) An Experimental Comparison of Screech Owl Predation on Resident and Transient White-Footed Mice (*Peromyscus leucopus*). *Journal of Mammalogy* 48: 387–391.
72. Wolf M, Frair J, Merrill E, Turchin P (2009) The Attraction of the Known: the Importance of Spatial Familiarity in Habitat Selection in Wapiti Cervus elaphus. *Ecography* 32: 401–401.
73. Bergeron P, Baeta R, Pelletier F, Réale D, Garant D (2011) Individual Quality: Tautology or Biological Reality? *Journal of Animal Ecology* 80: 361–364.
74. McCann T (1980) Population Structure and Social Organisation of Southern Elephant Seals, *Mirounga leonina* (L.). *Biological Journal of the Linnean Society* 14: 133–150.
75. Edney E, Gill R (1968) Evolution of Senescence and Specific Longevity. *Nature* 220: 281–282.
76. Pistorius P, Bester M, Kirkman S (1999) Dynamic Age-Distributions in a Declining Population of Southern Elephant Seals. *Antarctic Science* 11: 445–450.
77. Henderson R, Jones M, Stare J (2001) Accuracy of Point Predictions in Survival Analysis. *Statistics in Medicine* 20: 3083–3096.
78. Shmueli G (2010) To Explain or to Predict. *Statistical Science* 25: 289–310.
79. Gaillard JM, Loison A, Festa-Bianchet M, Yoccoz N, et al. (2003) Life Span: Evolutionary, Ecological, and Demographic Perspectives, The Population Council, chapter Ecological Correlates of Life Span in Populations of Large Herbivorous Mammals. . pp 39–56.
80. Turner E, Hanley J (2010) Cultural Imagery and Statistical Models of the Force of Mortality: Addison, Gompertz and Pearson. *Journal of the Royal Statistical Society series A* 173: 483–499.
81. Laws R (1993) Antarctic Seals. *Research Methods and Techniques*, Cambridge University Press, chapter 11 - Age Determination. pp 199–227.
82. Wilske J, Arnborn T (1996) Seasonal Variation in Vitamin D Metabolites in Southern Elephant Seals (*Mirounga leonina*) Females at South Georgia. *Comparative Biochemistry and Physiology A* 114: 9–14.
83. Brodie C, Leng M, Casford J, Kendrick C, Lloyd J, et al. (2011) Evidence for Bias in C and N Concentrations and  $\delta^{13}C$  Composition of Terrestrial and Aquatic Organic Materials Due to Pre-Analysis Acid Preparation Methods. *Chemical Geology* 282: 67–83.
84. Schulting R, Blockley S, Bocherens H, Drucker D, Richards M (2008) Stable Carbon and Nitrogen Isotope Analysis on Human Remains from the Early Mesolithic Site of La Vergne (Charente-Maritime, France). *Journal of Archaeological Science* 35: 763–772.
85. Ambrose S (1990) Preparation and Characterization of Bone and Tooth Collagen for Isotopic Analysis. *Journal of Archaeological Science* 17: 431–451.
86. Moyes A, Doidge D (1984) Composition of the Mineral Phase of Dentin in Southern Elephant Seal and Antarctic Fur Seal Teeth. *British Antarctic Survey Bulletin* 64: 81–84.
87. Zhang Z, Hamagami F, Wang L, Nesselroede J, Grimm K (2007) Bayesian Analysis of Longitudinal Data using Growth Curve Models. *International Journal of Behavioural Development* 31: 374–383.
88. Burnham K, Anderson D (2002) Model Selection and Multimodel Inference. A Practical Information-Theoretic Approach. Springer, 2nd edition.
89. Authier M, Delord K, Guinet C (2011) Population Trends of Female Elephant Seals Breeding on the Courbet Peninsula, Îles Kerguelen. *Polar Biology* 34: 319–328.
90. Balasse M, Bocherens H, Mariotti A, Ambrose S (2001) Detection of Dietary Changes in Intra-Tooth Carbon and Nitrogen Isotopic Analyses: an Experimental Study of Dentin Collagen of Cattle (*Bos taurus*). *Journal of Archaeological Science* 28: 235–245.
91. Spiegelhalter D, Best N, Lunn D (2003) WinBUGS User Manual version 1.4. URL <http://www.mrc-bsu.cam.ac.uk/bugs/winbugs/contents.shtml>.
92. R Development Core Team (2009) R: A Language and Environment for Statistical Computing. R Foundation for Statistical Computing, Vienna, Austria. URL <http://www.R-project.org>. ISBN 3-900051-07-0.
93. Sturtz S, Ligges U, Gelman A (2005) R2winbugs: a Package for Running WinBUGS from R. *Journal of Statistical Software* 12: 1–16.
94. Gelman A (2006) Prior Distributions for Variance Parameters in Hierarchical Models (comment on Article by Browne and Draper). *Bayesian Analysis* 1: 515–534.
95. Gelman A, Jakulin A, Grazia Pittau M, Su YS (2008) A Weakly Informative Default Prior Distribution for Logistic and Other Regression Models. *The Annals of Applied Statistics* 2: 1360–1383.
96. Tokuda T, Goodrich B, Van Mechelen I, Gelman A, Tuerlinckx F (2011) Visualizing Distributions of Covariance Matrices. Technical report, University of Leuven, Belgium and Columbia University, USA. URL <http://www.stat.columbia.edu/~gelman/research/unpublished/Visualization.pdf>.
97. Anderson T, Olkin I, Underhill L (1987) Generation of Random Orthogonal Matrices. *SIAM Journal on Scientific and Statistical Computing* 8: 625–629.
98. Cowles M, Carlin B (1996) Markov Chain Monte Carlo Convergence Diagnostics: a Comparative Review. *Journal of the American Statistical Association* 91: 883–904.
99. Plummer M, Best N, Cowles K, Vines K (2008) coda: Output Analysis and Diagnostics for MCMC. R package version 0.13-2.
100. Jackson C (2008) Displaying Uncertainty with Shading. *The American Statistician* 62: 340–347.
101. Spiegelhalter D, Pearson M, Short I (2011) Visualizing Uncertainty about the Future. *Science* 333: 1393–1400.
102. Kaplan E, Meier P (1958) Nonparametric Estimation from Incomplete Observations. *Journal of the American Statistical Association* 53: 457–481.
103. Orsi A, Whitworth III T, Nowlin JW (1995) On the Meridional Extent and Fronts of the Antarctic Circumpolar Current. *Deep-Sea Research I* 42: 641–673.