



HAL
open science

Measurement of VOC emissions from wood remedial treatment: chamber tests and field experiments

François Maupetit, Olivier Ramalho, Alexandra Mienne, Patrick O'Kelly,
Christophe Yrieix

► **To cite this version:**

François Maupetit, Olivier Ramalho, Alexandra Mienne, Patrick O'Kelly, Christophe Yrieix. Measurement of VOC emissions from wood remedial treatment: chamber tests and field experiments. 9th International Conference on Indoor Air Quality and Climate Indoor Air'2002, Jun 2002, Monterey, United States. pp.219-224. hal-00688510

HAL Id: hal-00688510

<https://hal.science/hal-00688510>

Submitted on 17 Apr 2012

HAL is a multi-disciplinary open access archive for the deposit and dissemination of scientific research documents, whether they are published or not. The documents may come from teaching and research institutions in France or abroad, or from public or private research centers.

L'archive ouverte pluridisciplinaire **HAL**, est destinée au dépôt et à la diffusion de documents scientifiques de niveau recherche, publiés ou non, émanant des établissements d'enseignement et de recherche français ou étrangers, des laboratoires publics ou privés.

MEASUREMENT OF VOC EMISSIONS FROM WOOD REMEDIAL TREATMENT: CHAMBER TESTS AND FIELD EXPERIMENTS

F. Maupetit¹, O. Ramalho¹, A. Mienne¹, P. O’Kelly¹ and C. Yrieix²

¹Centre Scientifique et Technique du Bâtiment (CSTB), France

²Centre Technique du Bois et de l’Ameublement (CTBA), France

SUMMARY

The emissions of two wood remedial treatment products (water-based WB and petroleum-based PB solvent formulations) were characterized by two laboratories (CSTB and CTBA) using emission test chambers. VOC emissions were also measured in real conditions during a roof renovation work in an old building. Identified VOC and emission patterns in test chambers and on the field were comparable. Emission models were used to estimate the time before re-entry in the treated space.

CHAMBER TESTS

- Test conditions are selected according to the ENV 13419-1 standard (23 ± 2 °C, $50 \pm 5\%$ RH, $q = 1.5$ m³.h⁻¹.m⁻²).
- WB or PB wood preservative product is applied on spruce tree boards with a paintbrush (300 ml.m⁻²).

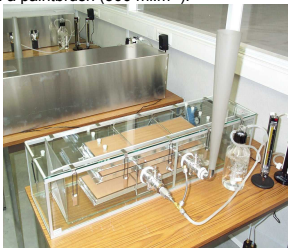


Figure 1. Emission test chamber used by CSTB (Climpaq, 50 L)

FIELD EXPERIMENT

- Renovation of an old building (oak frame)
- Spray and injection of PB wood preservative product is realized by a professional (300 ml.m⁻²)
- Specific ventilation rate $q = 15.4$ m³.h⁻¹.m⁻²



Figure 2. Roof trussing before renovation (total wood surface 84 m², volume 65 m³).

CHAMBER RESULTS

Emissions from **WB solvent** are characterized by propylene glycol ethers (mainly 1-methoxy-2-propanol).

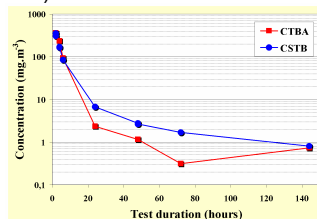


Figure 3. Water-based wood preservative (1-Methoxy-2-propanol concentrations)

Emissions from **PB solvent** are characterized by alkanes (mainly C12 and C13). Aromatic and cyclic hydrocarbons are also detected.

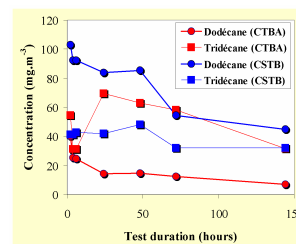


Figure 4. Petroleum-based wood preservative (Main alkanes concentrations)

FIELD RESULTS

VOC emissions from the PB wood preservative on the field are identical than those detected in chamber tests.

TVOC field measurements are compared with exposition concentrations predicted from chamber tests. Predicted exposition concentrations are slightly higher than field measurements (less than one order of magnitude).

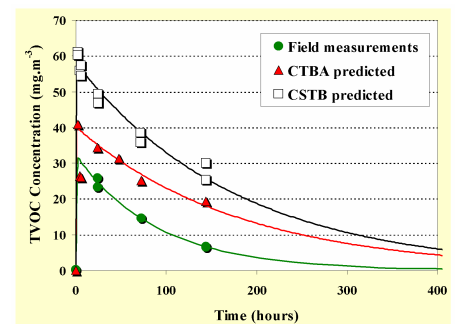


Figure 5. TVOC exposition concentrations predicted from chamber tests and measured on the field.

DISCUSSION

- For both WB and PB wood preservative products, a **good agreement** is found between results from CSTB and CTBA. **Differences in test specimen preparation** explain the higher TVOC emission found by CSTB (variation in the initial VOC load).
- Differences between field and chamber tests are probably due to two main causes :
 - **Variations in product application** (spray and injection versus paintbrush).
 - **Field environmental conditions** : high ventilation (20 ach) and fluctuations of temperature and humidity.
- Time before re-entry in the treated space is estimated using a simple dilution model. The field experiment show the lowest values :
 - **21 days** to reach initial TVOC concentration before treatment (0.12 mg.m⁻³)
 - **3 days** to reach a non-professional exposure limit proposed for white-spirits (14.4 mg.m⁻³)

These estimated values are strongly related to the air exchange rate, e.g., for 1 ach, the time needed before re-entry is increased by more than 10 days in both cases.

Chamber emission tests are efficient to characterize VOC emission from solvent-based products, and therefore to determine the potential health impact on the exposed population. The satisfactory comparison between chamber test and field results allows a reliable use of decay models in order to predict the time before re-entry under different application or ventilation scenario. Improvement of liquid product application control and environmental parameters input in the models would however increase the reliability of the simulation.

ACKNOWLEDGEMENTS

This work has been supported by CSTB, CTBA and by the French Energy and Environment Agency (ADEME) through 97-01-030 grant.