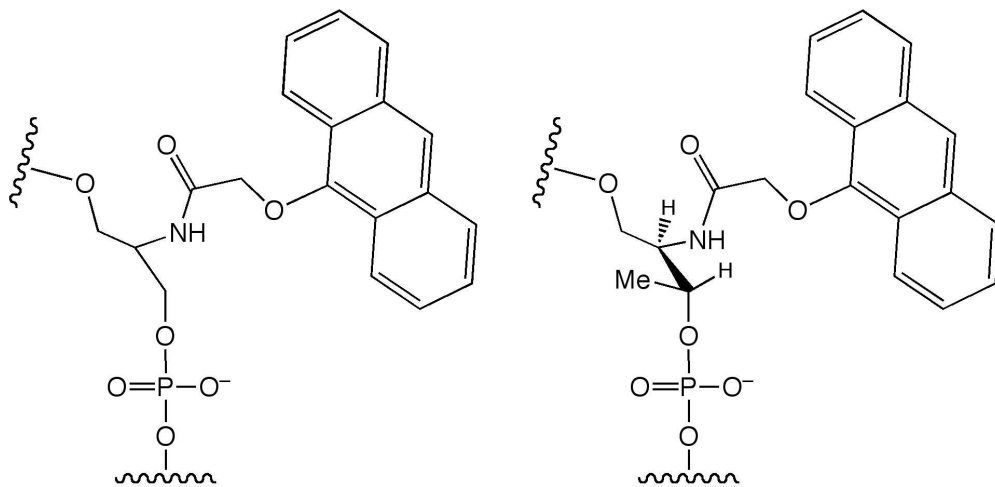


**Anthracene Modified Oligonucleotides as Fluorescent DNA Mismatch Sensors: Discrimination Between Various Base Pair Mismatches**

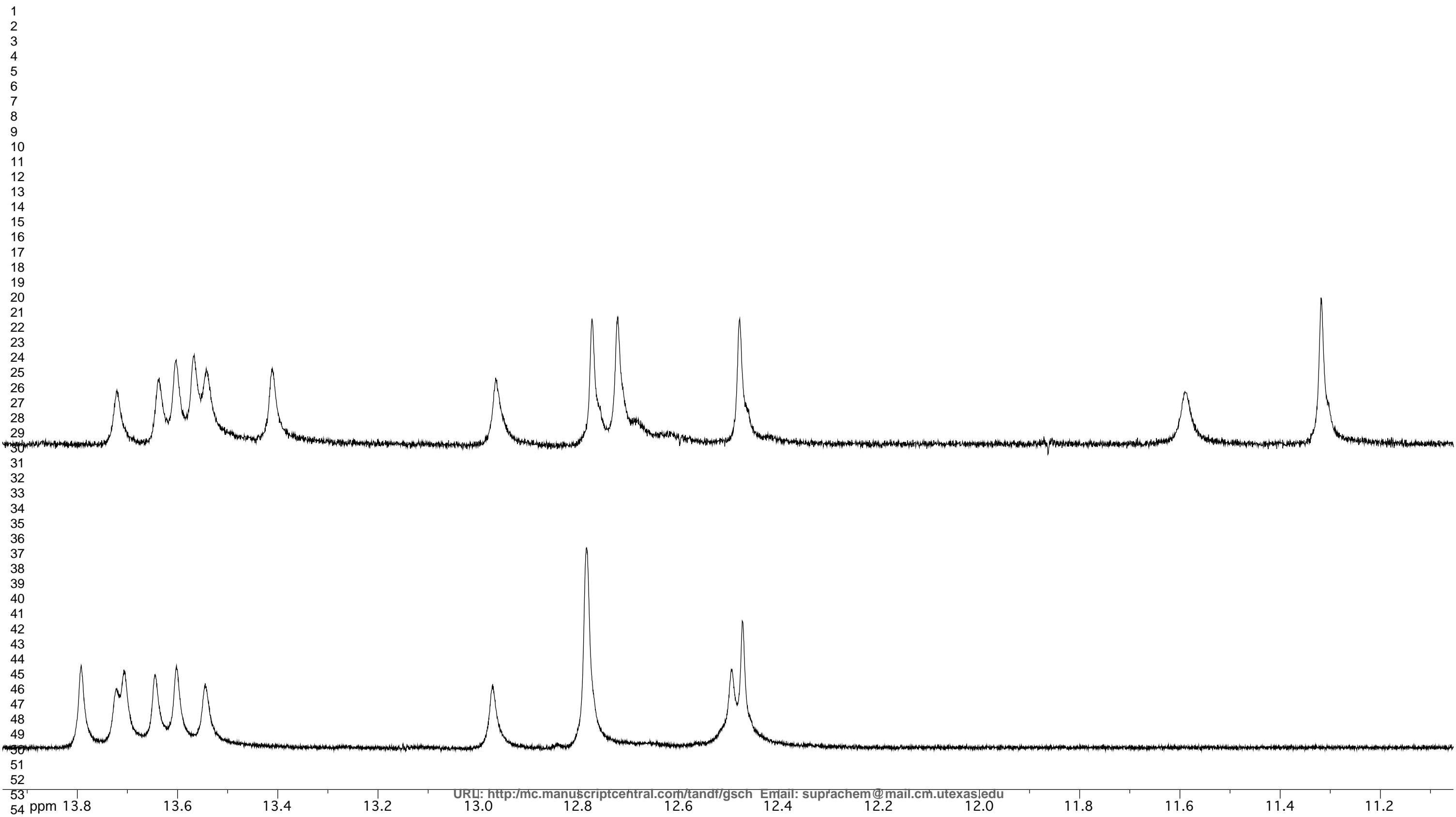
Journal:	<i>Supramolecular Chemistry</i>
Manuscript ID:	GSCH-2010-0161.R1
Manuscript Type:	Special Issue Paper
Date Submitted by the Author:	06-Sep-2010
Complete List of Authors:	Tucker, Jim; University of Birmingham, Chemistry Hyde, Eva; University of Birmingham, Biosciences Ludwig, Christian; University of Birmingham Zhao, John; University of Birmingham, Chemistry
Keywords:	DNA, sensor, SNP, fluorescence, anthracene

SCHOLARONE™  
Manuscripts

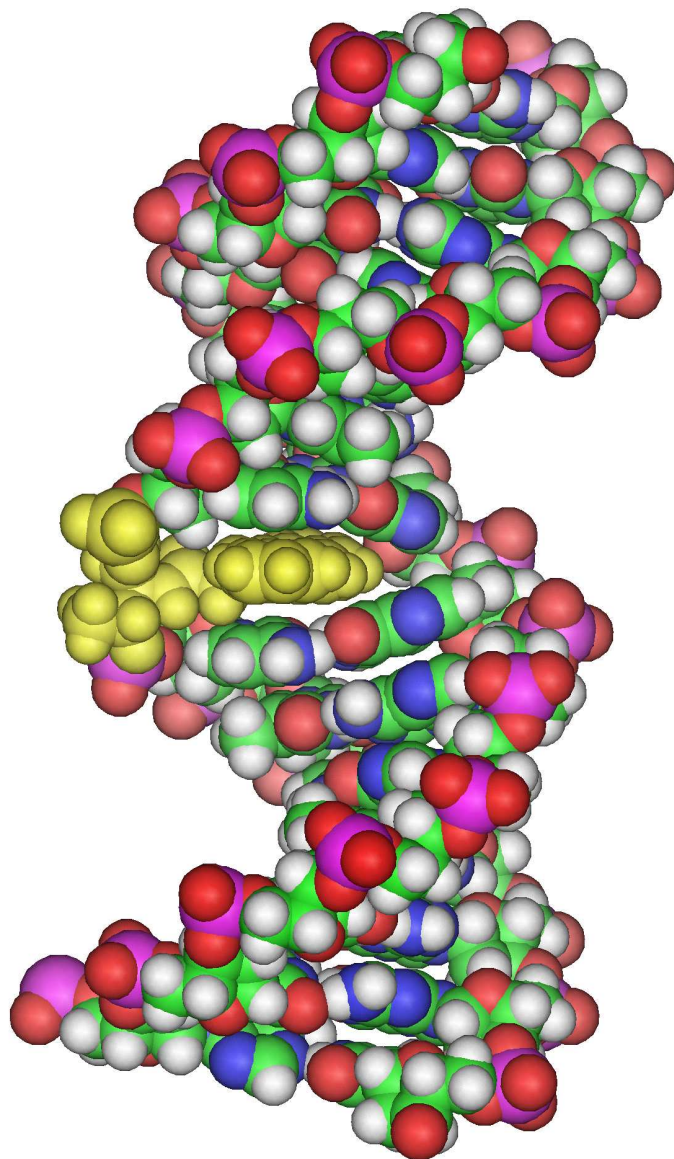


163x78mm (300 x 300 DPI)

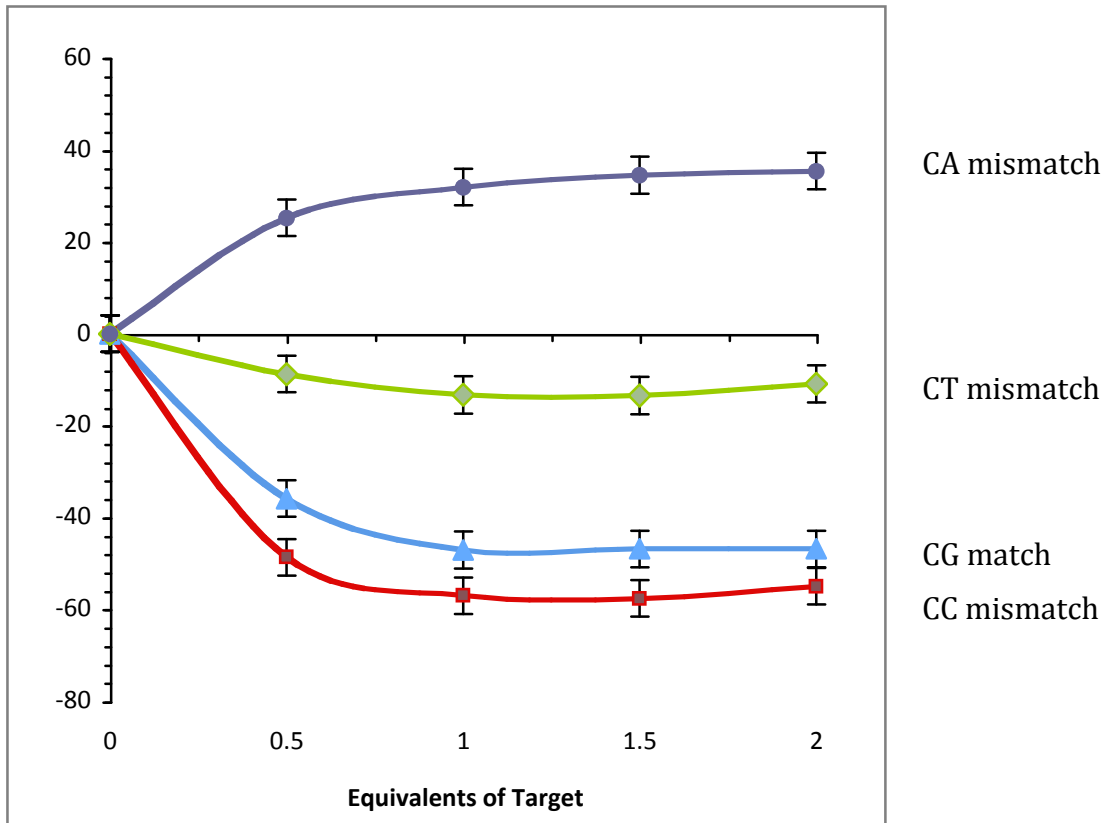
Review Only



1  
2  
3  
4  
5  
6  
7  
8  
9  
10  
11  
12  
13  
14  
15  
16  
17  
18  
19  
20  
21  
22  
23  
24  
25  
26  
27  
28  
29  
30  
31  
32  
33  
34  
35  
36  
37  
38  
39  
40  
41  
42  
43  
44  
45  
46  
47  
48  
49  
50  
51  
52  
53  
54  
55  
56  
57  
58  
59  
60



112x163mm (300 x 300 DPI)



Review Only

## Anthracene Modified Oligonucleotides as Fluorescent DNA Mismatch Sensors: Discrimination Between Various Base Pair Mismatches

Jean-Louis H. A. Duprey,<sup>a</sup> Dario M. Bassani,<sup>b</sup> Eva Hyde,<sup>c</sup> Christian Ludwig,<sup>d</sup> Alison Rodger,<sup>e</sup> Joseph S. Vyle,<sup>f</sup> John Wilkie,<sup>a</sup> Zheng-yun Zhao<sup>a</sup> and James. H. R. Tucker<sup>a\*</sup>

<sup>a</sup>*School of Chemistry, University of Birmingham, Edgbaston, Birmingham B15 2TT, UK.*

<sup>b</sup>*LCOO, Université Bordeaux I, 33405 Talence, France.*

<sup>c</sup>*School of Biosciences, University of Birmingham, Edgbaston, Birmingham B15 2TT, UK.*

<sup>d</sup>*Henry Wellcome Building for Biomolecular NMR Spectroscopy, School of Cancer Sciences, University of Birmingham, Edgbaston, Birmingham B15 2TT, UK.*

<sup>e</sup>*Chemistry Department, University of Warwick, Gibbet Hill Road, Coventry, CV4 7AL, United Kingdom.*

<sup>f</sup>*School of Chemistry and Chemical Engineering, David Keir Building, Queen's University (QUB), Stranmillis Rd, Belfast BT9 5AG, UK.*

Correspondence details: j.tucker@bham.ac.uk

*(Received xxxx; final version received xxxx)*

A fluorescent anthracene-tagged DNA probe has been shown to respond to various DNA sequences by changes to its emission signal upon duplex formation. The fluorescence response for duplexes containing a single mismatch near the anthracene site has been found to be very sensitive to its composition, with the emission signal increasing for a CA mismatch and decreasing for CT and CC mismatches.

Keywords: DNA, sensor, SNP, fluorescence, anthracene

1  
2  
3  
4  
5  
6  
7 The field of sequence selective DNA detection is one that has greatly expanded in  
8 response to the demand for rapid and selective oligonucleotide recognition. In particular  
9 the detection of Single Nucleotide Polymorphisms (SNPs) has attracted much attention.  
10 An SNP, which is essentially a specific position along a sequence of DNA where the base  
11 identity (i.e. A, T, G or C) is known to vary among different individuals, is the most  
12 common form of genetic variation; they occur with great frequency throughout the  
13 human genome and can provide an indication of a predisposition to diseases that have a  
14 genetic component.<sup>1</sup>  
15  
16  
17  
18  
19  
20  
21  
22

23 A great deal of effort has been put into the development of fluorescent DNA sensors that  
24 are highly sequence specific.<sup>2</sup> One way to achieve this is to incorporate nucleosides into  
25 DNA that are modified using fluorescent tags that can detect specific DNA bases.<sup>3</sup> A  
26 wide variety of different moieties have been tagged to modified nucleosides with the aim  
27 of generating fluorescence sensors without the need for an additional quencher group.<sup>4, 5</sup>  
28 Such base tagged systems include pyrene,<sup>6-8</sup> fluorene,<sup>9</sup> phenanthroline<sup>10</sup> and  
29 anthracene.<sup>11, 12</sup> Alternatively, fluorophores may be directly attached to the ribose  
30 moiety.<sup>13-15</sup> A synthetically simpler approach is to incorporate the sensor unit into the  
31 oligonucleotide backbone.<sup>15, 16</sup> This has been successfully achieved with pyrene<sup>17</sup> for the  
32 purpose of sensing using excimer formation, azobenzenes for photoswitching<sup>18, 19</sup> and  
33 acridine for site selective RNA activation<sup>20</sup> and electron transfer studies.<sup>21</sup> However, of  
34 the many modified oligonucleotides that have been reported for fluorescence sensing  
35 purposes, generally they are limited in their ability to differentiate between all of the  
36 possible base-pairing partners. A modified nucleobase that can discriminate between the  
37 four DNA bases was recently reported,<sup>22</sup> where the sensing proceeded via different  
38 decreases in emission, with the single strand form being more emissive than any of the  
39 duplexes.  
40  
41  
42  
43  
44  
45  
46  
47  
48  
49  
50  
51  
52  
53  
54

55 Previously, we synthesised an anthracene based fluorescence sensor, attached to a non-  
56 nucleosidic serinol linker (Figure 1a), that was capable of differentiating between fully  
57  
58  
59  
60

1  
2  
3  
4  
5  
6  
7  
8  
9  
10  
11  
12  
13  
14  
15  
16  
17  
18  
19  
20  
21  
22  
23  
24  
25  
26  
27  
28  
29  
30  
31  
32  
33  
34  
35  
36  
37  
38  
39  
40  
41  
42  
43  
44  
45  
46  
47  
48  
49  
50  
51  
52  
53  
54  
55  
56  
57  
58  
59  
60

matched and singly mismatched oligonucleotides through a decrease and increase respectively in fluorescence emission, caused by the DNA microenvironment.<sup>23</sup> However, by using prochiral serinol during the synthesis, a mixture of diastereomeric oligonucleotides was produced. Although these isomers could be separated, the linker stereochemistry was difficult to assign with complete certainty. We therefore turned our attention towards a threoninol linker (Figure 1b), which has previously been successfully used in other studies on functionalised oligonucleotides<sup>6, 21, 24-26</sup> and as an enantiopure starting material, removes the problem of generating diastereomers. In this communication, we show how a novel anthracene-containing fluorescent probe containing such a linker can discriminate between various matching and mismatching base pairs within a duplex through distinct changes in emission intensity.

Insert Figure 1

The linker containing a threoninol unit in the L configuration was synthesised based on previously reported methodologies<sup>23</sup> and was subsequently incorporated into a modified oligonucleotide (Probe 5'-CLC, where L represents the L-threoninol linker, Figure 1b) which, along with other unmodified sequences, was synthesised using standard solid phase DNA synthesis techniques and purified by HPLC. The complete list of oligonucleotides synthesised is presented in Table 1. As a change from our other studies,<sup>23, note 1</sup> the systems were designed with no base opposite the tether site in the matching strand, in the expectation that this would give the anthracene sufficient room to fully insert inside each duplex.

Insert Table 1



1  
2  
3  
4  
5  
6  
7  
8  
9  
10  
11  
12  
13  
14  
15  
16  
17  
18  
19  
20  
21  
22  
23  
24  
25  
26  
27  
28  
29  
30  
31  
32  
33  
34  
35  
36  
37  
38  
39  
40  
41  
42  
43  
44  
45  
46  
47  
48  
49  
50  
51  
52  
53  
54  
55  
56  
57  
58  
59  
60

A series of fluorescence titration experiments were performed on Probe 5'-CLC (aqueous phosphate buffer pH 7, ca. 298 K) in order to determine and analyse the effect of DNA binding on the anthracene emission signal. The results from these titrations are presented in Figure 2, where it can be seen that the addition of aliquots of the matching target 3'-GG to a 1  $\mu$ M aqueous solution of 5'-CLC results in a significant decrease in anthracene emission intensity at 440 nm, with quenching reaching 47% once the duplex is fully formed.

Insert Figure 2

No significant changes in emission intensity were observed in the presence of excess amounts of target, which indicated the formation of a strongly bound 1:1 complex at these concentrations. Studies with other oligonucleotides, each containing a single variation in the identity of the base in the 8th position (3'-AG, 3'-CG, 3'-TG), were then undertaken. Two titrations also showed a decrease in emission intensity (3'-CG: -55%; 3'-TG: -13%). However 3'-AG produced an increase of +35% at 440 nm. The emission spectra for each duplex are overlaid in Figure 3. These results clearly indicate a different sensing response for each type of base pair (whether match or mismatch) with only one system (CA mismatching base pair) resulting in an increase in emission intensity. These changes in emission are supported by quantum yield measurements obtained for both the single strand and duplex forms (see supplementary information). As described below, a series of experiments and calculations were then undertaken to examine how the position of the anthracene group with respect to the DNA helix might affect its emissive properties.

1  
2  
3  
4  
5  
6  
7  
8  
9  
10  
11  
12  
13  
14  
15  
16  
17  
18  
19  
20  
21  
22  
23  
24  
25  
26  
27  
28  
29  
30  
31  
32  
33  
34  
35  
36  
37  
38  
39  
40  
41  
42  
43  
44  
45  
46  
47  
48  
49  
50  
51  
52  
53  
54  
55  
56  
57  
58  
59  
60

Insert Figure 3

The  $^1\text{H}$  NMR spectra in water of the unmodified and modified (matching base pair) duplexes were recorded (900 MHz, for conditions see supplementary information). In 1-D NMR spectra of oligonucleotides, the most informative part of the spectrum is the downfield region where the imino protons of G (N-1) and T (N-3) bases involved in H-bonding resonate (at 12-13 ppm and 13-14 ppm respectively).<sup>27</sup> At 298 K, signals in both regions were observed in the expected regions for the unmodified duplex 5'-CAC/3'-GG (Figure 4 bottom). However for the modified matching duplex 5'-CLC/3'-GG, significant (ca. 1ppm) upfield shifts in two G imino proton signals were observed, which were assigned to GC base pairs flanking the anthracene tether (Figure 4 top). Similar upfield shifts have been observed previously in duplexes that interact with intercalating acridine<sup>28</sup> and azobenzene<sup>29</sup> moieties.

Insert Figure 4

A computational model of the duplex 5'-CLC/3'-GG also indicated a significant interaction of the anthracene with the base pairs of the helix through intramolecular intercalation, with the moiety again flanking the central GC base pairs within the major groove of the duplex (Fig. 5), consistent with the NMR findings.

Insert Figure 5

1  
2  
3  
4  
5  
6  
7 DNA melting studies confirmed that duplexes between Probe 5'-CLC and each of the  
8 targets form at the temperature used for the fluorescence studies. The  $T_m$  values of these  
9 duplexes are presented in Table 2 and show that the modified duplexes are more stable  
10 than the equivalent unmodified duplexes (where an adenine nucleoside replaces the  
11 anthracene non-nucleosidic linker).  
12  
13  
14  
15  
16  
17  
18  
19  
20  
21

22  
23  
24  
25  
26  
27  
28  
29  
30  
31  
32  
33  
34  
35  
36  
37  
38  
39  
40  
41  
42  
43  
44  
45  
46  
47  
48  
49  
50  
51  
52  
53  
54  
55  
56  
57  
58  
59  
60

Insert Table 2

The melting temperature for duplex 5'-CLC/3'-GG is significantly higher (+11.5 °C) than that of the unmodified 5'-CAC/3'-GG system, which is further evidence for a strong association of anthracene unit with the matching duplex, and is consistent with previous findings,<sup>21</sup> including those from studies with conventional intermolecular anthracene intercalators.<sup>30</sup> The high  $T_m$  value is also consistent with an even greater interaction of the anthracene with the duplex than in related probe systems containing a base site opposite the tether site.<sup>22</sup> note 1 Furthermore, the fact that all the anthracene modified duplexes give uniformly higher  $T_m$  values than their unmodified counterparts, whether the duplex contains a matching base pair or not, indicates that the anthracene group takes part in effective and broadly similar stabilising interactions with the duplex in each case (vide infra).

As for explaining the fluorescence response of the anthracene tether to duplex formation, quenching via photoinduced electron transfer, as suggested previously,<sup>31, 32</sup> could be expected to arise from a stacking contact with at least one of the adjacent GC pairs, but the different emission intensities observed for various mismatching base pairs are more difficult to rationalise. However the similar  $T_m$  data and induced CD spectra (see supplementary information) for the three mismatched duplexes clearly imply that their

1  
2  
3 structures resemble one another and indicate that the anthracene environments, with respect  
4 to proximate base pairs in the duplex, being approximately the same in each case.  
5 Therefore factors of electronic rather than steric/positional origin appear to be largely  
6 responsible for a change in base identity within a base pair bringing about such a dramatic  
7 change in anthracene emission intensity. The increase in fluorescence intensity for the  
8 system 5'-CLC/3'-AG can be rationalised by a combination of the hydrophobic  
9 environment of the duplex preventing quenching by water and the relatively weak  
10 quenching of the proximate adenine, a phenomenon that has been previously observed  
11 when anthracene intercalates in AT vs. GC-rich regions of DNA.<sup>30</sup> This quenching effect  
12 has in fact been quantified in the case of pyrene intercalators by consideration of the free  
13 energy of electron transfer between bases as a result of their different redox potentials.<sup>31</sup>  
14 Such an analysis also predicts cytosine to have the greatest thermodynamic driving force  
15 for quenching by electron transfer and adenine to have the weakest, which is consistent  
16 with what is observed in this study.  
17  
18  
19  
20  
21  
22  
23  
24  
25  
26  
27  
28  
29

30 In conclusion, we have shown how an anthracene-tagged DNA probe can demonstrate a  
31 different fluorescent response to various base pair combinations within a duplex, which is  
32 of relevance to the development of novel SNP sensors. It appears that the unusual  
33 selectivity of the sensing signal (i.e. the emission being highly sensitive to the identity of  
34 the base pair in the duplex) stems from an optimal interaction of the anthracene with the  
35 duplex which is associated with the absence of a free base opposite the tether site. A range  
36 of studies with different base sequences using a range of anthracene tethers are now  
37 planned<sup>note 1</sup> in order to rationalise these findings further.  
38  
39  
40  
41  
42  
43  
44  
45  
46  
47  
48  
49

#### 50 Acknowledgements

51 The University of Birmingham (JLHAD, studentship), EPSRC (JHRT Leadership  
52 fellowship) and Advantage West Midlands are thanked for their support.  
53  
54  
55  
56  
57  
58  
59  
60

1  
2  
3 Note 1. Monomer synthesis and detailed spectroscopic studies on these and related probe  
4 systems, including comparative studies on strands with D-threoninol linkers, will be  
5 reported elsewhere in a full paper.  
6  
7  
8  
9  
10  
11  
12  
13  
14  
15  
16  
17  
18  
19  
20  
21  
22  
23  
24  
25  
26  
27  
28  
29  
30  
31  
32  
33  
34  
35  
36  
37  
38  
39  
40  
41  
42  
43  
44  
45  
46  
47  
48  
49  
50  
51  
52  
53  
54  
55  
56  
57  
58  
59  
60

For Peer Review Only

**Table 1** Synthesised sequences

Oligonucleotide name	Sequence
5'-CAC	5'-TGG-ACT-CAC-TCA-ATG -3'
Probe 5'-CLC	5'-TGG-ACT-CLC-TCA-ATG -3'
Target 3'-BG (B = G, A, C, T)	3'-ACC-TGA-BG-AGT-TAC-5'

**Table 2** Melting points of DNA duplexes in °C

• Target 3'-BG	• Unmodified Probe 5'-CAC	• Anthracene Probe 5'-CLC
• 3'-GG	• 49.5	• 61
• 3'-CG	• 35.5	• 45.5
• 3'-TG	• 34.5	• 46
• 3'-AG	• 38	• 46.5

(Conditions: 5µM with 10 mM phosphate buffer, 100 mM NaCl, pH 7)

1  
2  
3  
4  
5  
6  
7  
8  
9  
10  
11  
12  
13  
14  
15  
16  
17  
18  
19  
20  
21  
22  
23  
24  
25  
26  
27  
28  
29  
30  
31  
32  
33  
34  
35  
36  
37  
38  
39  
40  
41  
42  
43  
44  
45  
46  
47  
48  
49  
50  
51  
52  
53  
54  
55  
56  
57  
58  
59  
60

Figure 1. Structures of (a) serinol (stereochemistry not shown) and (b) L-threoninol linkers used in modified DNA probes.

Figure 2. Fluorescence titration plots at 440 nm for Probe 5'-CLC with 0.5, 1.0, 1.5 and 2.0 equivalents of fully matching targets 3'-GG (blue triangles) and mismatched targets 5'-CG (red squares), 5'-TG (green diamonds) and 3'-AG (purple dots), 10 mM pH 7.0 phosphate buffer, 100 mM NaCl, ca. 298 K.

Figure 3. Fluorescence spectra for duplexes formed between Probe 5'-CLC (black) and 3'-GG (blue), 5'-CG (red), 5'-TG (green) and 3'-AG (purple), 10 mM pH 7.0 phosphate buffer, 100 mM NaCl, ca. 298 K.

Figure 4.  $^1\text{H}$  NMR spectra (900 MHz, 11-14 ppm region) of 5'-CLC/3'-GG duplex (top, 950  $\mu\text{M}$ ) and 5'-CAC/3'-GG duplex (bottom, 950  $\mu\text{M}$ ) in water (5%  $\text{D}_2\text{O}$ ), 10 mM phosphate buffer, 100 mM NaCl solution.

Figure 5. AMBER model of the duplex 5'-CLC/3'-GG.

## References

1. Zhang, H. P.; Zhao, H. Y.; Merikangas, K., *Ann. Med.* **1997**, *29*, 493.
2. Ranasinghe, R. T.; Brown, T., *Chem. Commun.* **2005**, 5487.
3. Okamoto, A.; Saito, Y.; Saito, I., *J. Photochem. Photobiol. C-Photochem. Rev.* **2005**, *6*, 108.
4. Venkatesan, N.; Seo, Y. J.; Kim, B. H., *Chem. Soc. Rev.* **2008**, *37*, 648.
5. Wilson, J. N.; Teo, Y. N.; Kool, E. T., *J. Am. Chem. Soc.* **2007**, *129*, 15426.
6. Kashida, H.; Asanuma, H.; Komiyama, M., *Chem. Commun.* **2006**, 2768.
7. Okamoto, A.; Tainaka, K.; Nishiza, K.; Saito, I., *J. Am. Chem. Soc.* **2005**, *127*, 13128.
8. Okamoto, A.; Kanatani, K.; Saito, I., *J. Am. Chem. Soc.* **2004**, *126*, 4820.
9. Hwang, G. T.; Seo, Y. J.; Kim, B. H., *J. Am. Chem. Soc.* **2004**, *126*, 6528.
10. Hurley, D. J.; Seaman, S. E.; Mazura, J. C.; Tor, Y., *Org. Lett.* **2002**, *4*, 2305.
11. Saito, Y.; Motegi, K.; Bag, S. S.; Saito, I., *Bioorg. Med. Chem.* **2008**, *16*, 107.
12. Xiao, Q.; Ranasinghe, R. T.; Tang, A. M. P.; Brown, T., *Tetrahedron* **2007**, *63*, 3483.
13. Kool, E. T., *Acc. Chem. Res.* **2002**, *35*, 936.
14. Wilson, J. N.; Kool, E. T., *Org. Biomol. Chem.* **2006**, *4*, 4265.
15. Chiba, J.; Takeshima, S.; Mishima, K.; Maeda, H.; Nanai, Y.; Mizuno, K.; Inouye, M., *Chem. Eur. J.* **2007**, *13*, 8124.
16. Kashida, H.; Liang, X. G.; Asanuma, H., *Curr. Org. Chem.* **2009**, *13*, 1065.
17. Okamoto, A.; Ichiba, T.; Saito, I., *J. Am. Chem. Soc.* **2004**, *126*, 8364.
18. Asanuma, H.; Takarada, T.; Yoshida, T.; Tamaru, D.; Liang, X. G.; Komiyama, M., *Angew. Chem. Int. Ed.* **2001**, *40*, 2671.
19. Asanuma, H.; Liang, X.; Yoshida, T.; Komiyama, M., *ChemBioChem*, **2001**, *2*, 39.
20. Kuzuya, A.; Machida, K.; Komiyama, M., *Tetrahedron Lett.* **2002**, *43*, 8249.
21. Fukui, K.; Tanaka, K.; Fujitsuka, M.; Watanabe, A.; Ito, O., *J. Photochem. Photobiol. B-Biol.* **1999**, *50*, 18.
22. Cekan, P.; Sigurdsson, S. T., *Chem. Commun.* **2008**, 3393.
23. Moran, N.; Bassani, D. M.; Desvergne, J. P.; Keiper, S.; Lowden, P. A. S.; Vyle, J. S.; Tucker, J. H. R., *Chem. Commun.* **2006**, 5003.
24. Asanuma, H.; Kashida, H.; Liang, X. G.; Komiyama, M., *Chem. Commun.* **2003**, 1536.
25. Shi, Y.; Machida, K.; Kuzuya, A.; Komiyama, M., *Bioconjug. Chem.* **2005**, *16*, 306.
26. Fujii, T.; Kashida, H.; Asanuma, H., *Chem. Eur. J.* **2009**, *15*, 10092.
27. Lam, S. L.; Chi, L. M., *Prog. Nucl. Magn Res. Spec.* **2010**, *56*, 289.
28. Assamunt, N.; Denny, W. A.; Leupin, W.; Kearns, D. R., *Biochemistry* **1985**, *24*, 1441.
29. Liang, X. G.; Asanuma, H.; Kashida, H.; Takasu, A.; Sakamoto, T.; Kawai, G.; Komiyama, M., *J. Am. Chem. Soc.* **2003**, *125*, 16408.
30. Kumar, C. V.; Asuncion, E. H., *J. Chem. Soc., Chem. Commun.* **1992**, 470.
31. Manoharan, M.; Tivel, K. L.; Zhao, M.; Nafisi, K.; Netzel, T. L., *J. Phys. Chem.* **1995**, *99*, 17461.



- 1  
2  
3 32. Prunkl, C.; Berndl, S.; Wanninger-Weiss, C.; Barbaric, J.; Wagenknecht, H. A.,  
4 *Phys. Chem. Chem. Phys.* **2010**, *12*, 32.  
5  
6  
7  
8  
9  
10  
11  
12  
13  
14  
15  
16  
17  
18  
19  
20  
21  
22  
23  
24  
25  
26  
27  
28  
29  
30  
31  
32  
33  
34  
35  
36  
37  
38  
39  
40  
41  
42  
43  
44  
45  
46  
47  
48  
49  
50  
51  
52  
53  
54  
55  
56  
57  
58  
59  
60

For Peer Review Only

## Supplementary Information

### Anthracene Modified Oligonucleotides as Fluorescent DNA Mismatch Sensors: Discrimination Between Various Base Pair Mismatches

J.-L. H. A. Duprey, D. M. Bassani, E. Hyde, C. Ludwig, A. Rodger, J. S. Vyle, J. Wilkie, Z. Zhao and J. H. R. Tucker\*

#### *DNA synthesis*

Automated DNA synthesis of probe sequences was performed at Queens University, Belfast on a Beckmann 1000M DNA. Millipore pure H<sub>2</sub>O was used in all syntheses and studies of oligonucleotides. HPLC purification was carried out at Queen's University, Belfast using a Merck Hitachi Interface D-7000, pump L-7100, with a LaChrom diode array detector L-7455. MALDI-tof mass spectra for oligonucleotides were obtained at the University of Birmingham using a Bruker Biflex IV Maldi time of flight mass spectrometer.

#### *Spectroscopy measurements*

UV/Vis spectra were recorded at the University of Birmingham using a Varian Cary 5000 or Varian Cary 50 spectrometer. DNA Melting temperatures were determined on a Varian Cary 5000 with a peltier heating accessory on a range of 15 to 85 °C with a heating rate of 0.5 °C /min and all samples were monitored at 260 nm unless stated otherwise. Circular Dichroism spectra were taken on a Jasco J-810 spectropolarimeter scanning at a rate of 100nm/min, medium sensitivity. Quantum yields and fluorescence titrations were carried out on a Shimadzu RF-5301 PC spectrofluorimeter. Fluorescence decay profiles and lifetimes were taken using a Houriba Jobin Yvan Fluorolog 211 using a 371 nm pulsed LED excitation source operated at 1 MHz.

#### *NMR measurements*

NMR studies were performed at the Henry Wellcome Building NMR research center at the University of Birmingham using a 900 MHz Oxford Instruments magnet. The oligonucleotide strands were additionally desalted by ethanol precipitation using 0.2 M NaOAc. Samples at 950 μM concentration of oligo with 10 mM phosphate buffer, 100 mM NaCl in 5% D<sub>2</sub>O were prepared. 1D spectra were obtained using excitation sculpting for water suppression using the procedure of Hwang and Shaka<sup>[1]</sup> and 2D NOESY spectra were obtained using the jump return procedure.<sup>[2]</sup>

At 298 K, it is likely that the end base pairs in each duplex fray (see Fig. 4), resulting in six AT base pair signals and six GC base pair signals being expected in each case. In the case of the unmodified duplex 5'-CAC/3'GG, integration of the signals indicates that three GC resonances overlap.

[1] T. L. Hwang, A. J. Shaka, *J. Magn. Res. Series A* **1995**, *112*, 275.

[2] P. Plateau, M. Gueron, *J. Am. Chem. Soc.* **1982**, *104*, 7310.

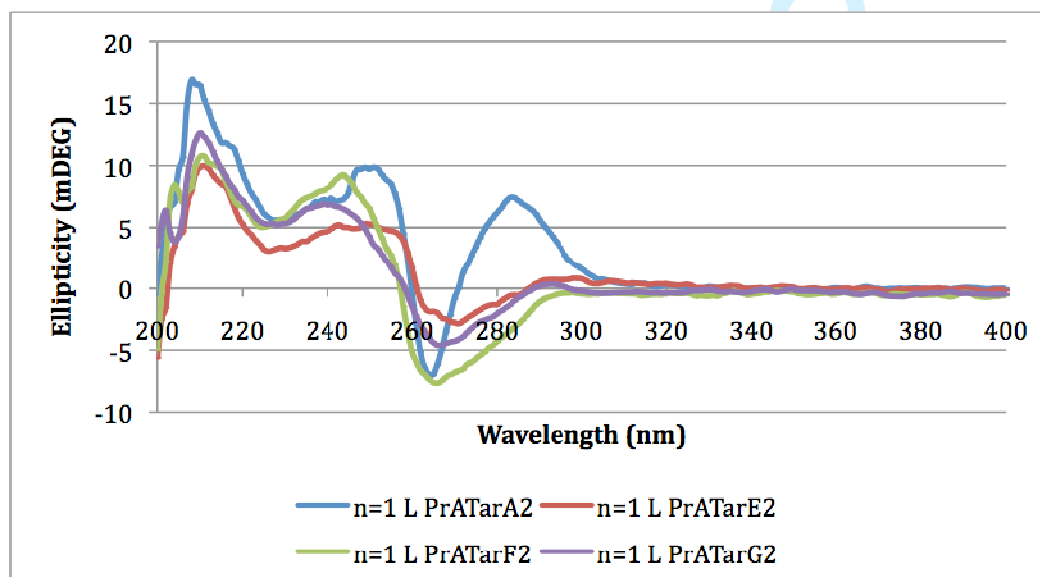
### Molecular modelling

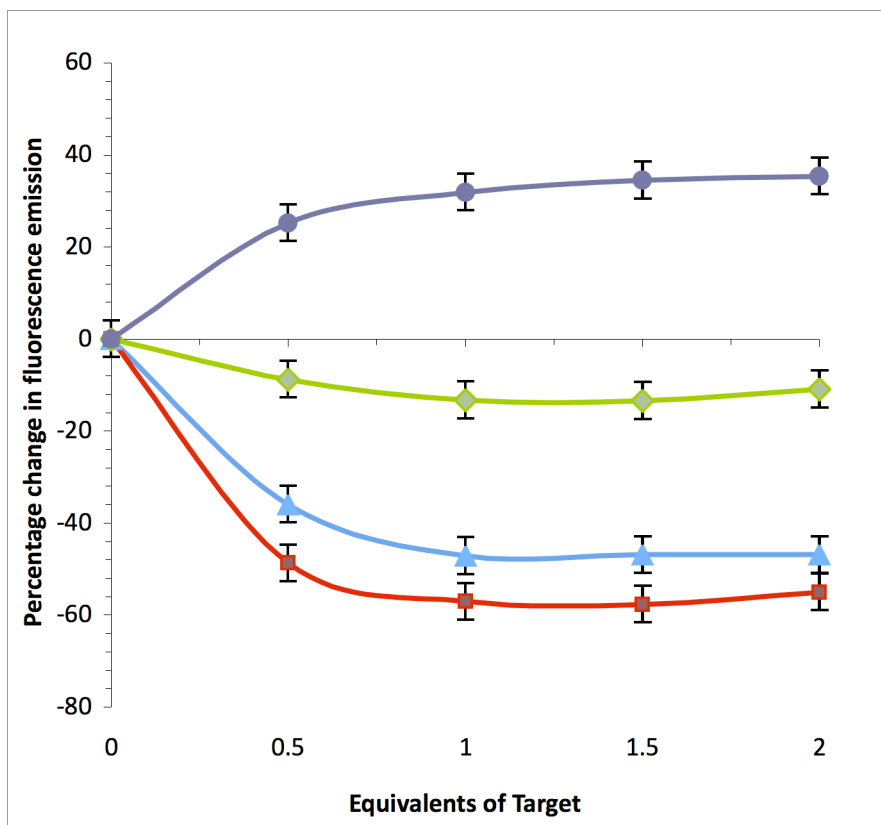
Molecular modelling structures were generated on a Silicon Graphics workstation using the InsightII modeling program. Energy minimization and molecular dynamics were performed on the University of Birmingham Bluebear computer cluster using the AMBER 8 modeling software.

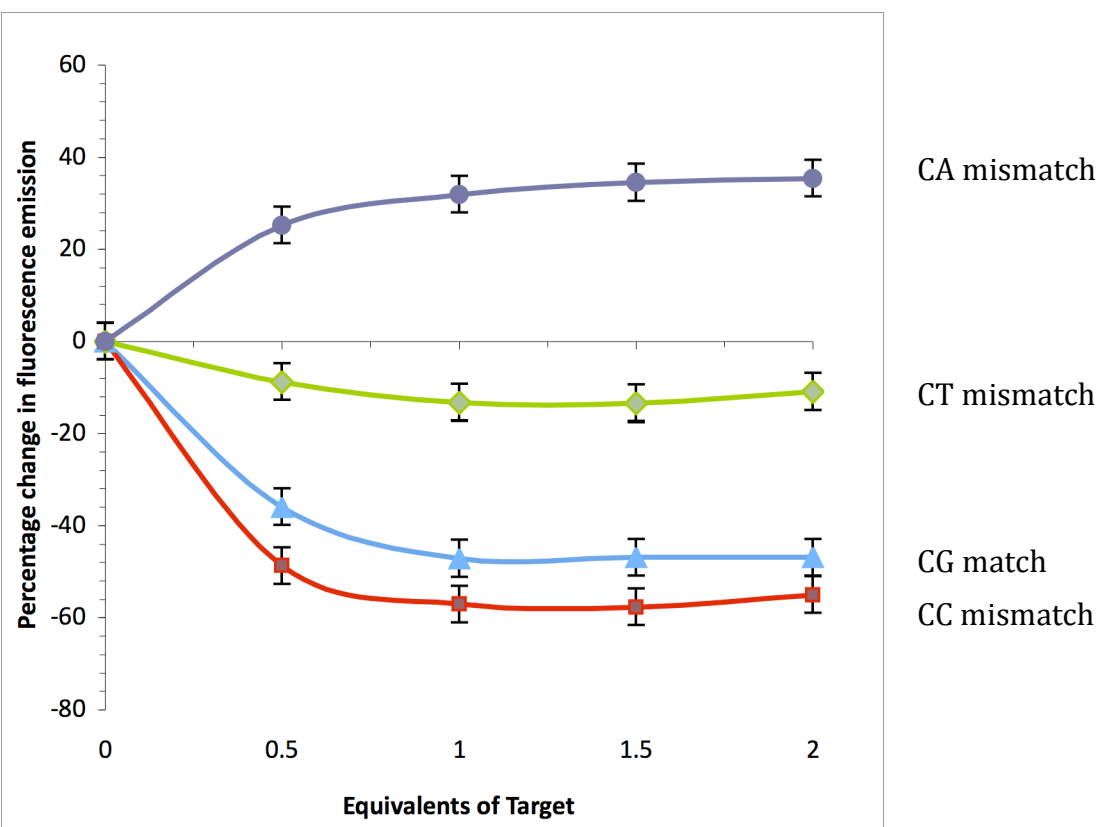
**Table S1.** Fluorescence quantum yields ( $\pm 10\%$ ) recorded at 298 K using quinine sulfate as a reference ( $\lambda_{\text{ex}}$  350 nm, concentration 1  $\mu\text{M}$ , 10 mM phosphate buffer, 100 mM NaCl, pH 7).

Probe or duplex	QY
5'-CLC	0.0197
5'-CLC/3'-GG	0.0102
5'-CLC/3'-CG	0.0095
5'-CLC/3'-TG	0.0181
5'-CLC/3'-AG	0.0221

**Fig. S1.** Induced CD spectra of 5'-CLC with matched 3'-GG (blue) and mismatched target strands 5'-CG (red), 5'-TG (green) and 3'-AG (purple) (concentration 5  $\mu\text{M}$ , 10 mM phosphate buffer, 100 mM NaCl, pH 7).







Review Only

