



HAL
open science

Microbiology of equine wounds and evidence of bacterial biofilms

S.J. Westgate, S.L. Percival, D.C. Knottenbelt, P.D. Clegg, C.A. Cochrane

► To cite this version:

S.J. Westgate, S.L. Percival, D.C. Knottenbelt, P.D. Clegg, C.A. Cochrane. Microbiology of equine wounds and evidence of bacterial biofilms. *Veterinary Microbiology*, 2011, 150 (1-2), pp.152. 10.1016/j.vetmic.2011.01.003 . hal-00687339

HAL Id: hal-00687339

<https://hal.science/hal-00687339>

Submitted on 13 Apr 2012

HAL is a multi-disciplinary open access archive for the deposit and dissemination of scientific research documents, whether they are published or not. The documents may come from teaching and research institutions in France or abroad, or from public or private research centers.

L'archive ouverte pluridisciplinaire **HAL**, est destinée au dépôt et à la diffusion de documents scientifiques de niveau recherche, publiés ou non, émanant des établissements d'enseignement et de recherche français ou étrangers, des laboratoires publics ou privés.

Accepted Manuscript

Title: Microbiology of equine wounds and evidence of bacterial biofilms

Authors: S.J. Westgate, S.L. Percival, D.C. Knottenbelt, P.D. Clegg, C.A. Cochrane



PII: S0378-1135(11)00007-1
DOI: doi:10.1016/j.vetmic.2011.01.003
Reference: VETMIC 5141

To appear in: *VETMIC*

Received date: 21-9-2010
Revised date: 7-12-2010
Accepted date: 1-1-2011

Please cite this article as: Westgate, S.J., Percival, S.L., Knottenbelt, D.C., Clegg, P.D., Cochrane, C.A., Microbiology of equine wounds and evidence of bacterial biofilms, *Veterinary Microbiology* (2010), doi:10.1016/j.vetmic.2011.01.003

This is a PDF file of an unedited manuscript that has been accepted for publication. As a service to our customers we are providing this early version of the manuscript. The manuscript will undergo copyediting, typesetting, and review of the resulting proof before it is published in its final form. Please note that during the production process errors may be discovered which could affect the content, and all legal disclaimers that apply to the journal pertain.

1 **Microbiology of equine wounds and evidence of bacterial biofilms**

2

3 **Westgate¹, S.J.*, Percival², S. L., Knottenbelt¹, D.C., Clegg¹, P.D. and Cochrane¹, C. A.**

4 ¹ University of Liverpool, School of Veterinary Sciences, Faculty of Health and Life

5 Sciences, Leahurst, Neston, South Wirral, United Kingdom, CH64 7TE.

6 E-mail:s.j.westgate@liv.ac.uk

7 Telephone: 01517946089

8

9 ² Department of Pathology, School of Medicine, West Virginia University, Morgantown,

10 West Virginia.

11

12 **Abstract**

13

14 Horse wounds have a high risk of becoming infected due to their environment. Infected
15 wounds harbour diverse populations of microorganisms, however in some cases these
16 microorganisms can be difficult to identify and fail to respond to antibiotic treatment,
17 resulting in chronic non-healing wounds. In human wounds this has been attributed to the
18 ability of bacteria to survive in a biofilm phenotypic state. Biofilms are known to delay
19 wound healing, principally due to their recalcitrance towards antimicrobial therapies and
20 components of the innate immune response. This study describes the presence of bacterial
21 biofilms within equine wounds. Thirteen eight millimetre diameter tissue samples were

22 collected from (n=18) chronic wounds. Following histological staining, samples were
23 observed for evidence of biofilms. Fifty one wounds and control skin sites were sampled
24 using sterile swabs. Control skin sites were on the uninjured side of the horse at the same
25 anatomical location as the wound. The isolated bacteria were cultured aerobically and
26 anaerobically. The biofilm forming potential of all the isolated bacteria was determined using
27 a standard crystal violet microtitre plate assay. Stained tissue samples provided evidence of
28 biofilms within 61.5% (8 out of 13) equine wounds. In total 340 bacterial isolates were
29 identified from all the equine wound and skin samples. *Pseudomonas aeruginosa* and
30 *Enterococcus faecium* were the most predominantly isolated bacterial species from equine
31 wound and skin samples respectively. *Staphylococcus* was the most commonly isolated
32 genus in both environments. Bacteria cultured from chronic and acute wounds showed
33 significantly ($P<0.05$) higher biofilm forming potential than bacteria isolated from skin. This
34 paper highlights preliminary evidence supporting the presence of biofilms and a high
35 microbial diversity in equine chronic wounds. The presence of biofilms in equine wounds
36 partly explains the reluctance of many lower limb wounds to heal. Non-healing limb wounds
37 in horses are a well documented welfare and economic concern. This knowledge can be used
38 to shape future treatments in order to increase the healing rate and decrease the costs and
39 suffering associate with equine wounds.

40

41 **Keywords**

42

43 biofilm · equine · wound · bacteria · microbiota · identification

44

45 Introduction

46

47 The incidence and prevalence of trauma wounds in horses is considered to be high (Singer et
48 al., 2003) and when these wounds fail to heal they are referred to as chronic wounds (Adam
49 and Southwood, 2006). Human and equine chronic wounds are considered to be
50 pathologically similar (Cochrane, 2003) but unlike human chronic wounds the microbiology
51 of equine wounds has not been studied in any great detail, either in terms of the number of
52 inhabiting bacteria, the types of inhabiting bacteria or the ability of bacteria to form
53 protective biofilms. In a number of human wound studies there is significant evidence
54 suggesting that chronic wounds have a delayed healing response due to the presence of a
55 polymicrobial biofilm (Davis et al., 2008). In these cases, wounds may appear to be
56 uninfected, but resist healing due to a persistent bacterial population residing within
57 protective biofilm.

58

59 A biofilm is the name given to a community of microorganisms attached to a surface, or each
60 other, and encased within a three dimensional matrix of extracellular polymeric substances
61 (EPS) (Mertz, 2003). Biofilm formation has been linked to an increased inherent resistance
62 to antimicrobial agents and the host's immune response (Stewart and Costerton, 2001). For
63 example *Staphylococcus aureus* when growing within a biofilm has been reported to be up to
64 100 times more resistant to antimicrobials when compared to their free floating or planktonic
65 counterparts (Leid et al., 2000). Consequently biofilms are known to be a causative agent in
66 persistent mammalian infections (Costerton et al., 2003) including reoccurring leg ulcers
67 (Bjarnsholt et al., 2008). Recently, preliminary evidence proposing the presence of biofilms
68 in chronic equine wounds was reported (Freeman et al., 2009).

69

70 The purpose of this study was two-fold. Firstly it aimed to highlight evidence that biofilms
71 exist in equine wounds; by examining tissue sections for evidence of biofilms and by
72 comparing the virulence of bacteria isolated from chronic and acute equine wounds, and from
73 equine skin. Virulence was assessed by determining the biofilm forming potential (BFP) of
74 the isolates. Using skin cultures as a control, the study also aimed to investigate the microbial
75 richness of equine wounds, in order to highlight differences in the species that were prevalent
76 in chronic wounds, acute wounds and equine skin.

77

78 **Material and methods**

79

80 **Experimental design**

81

82 Between November 2007 and May 2008, 51 of the horses and ponies at the Philip
83 Leverhulme Equine Hospital (PLEH), Neston, UK that presented with acute or chronic
84 wounds were selected for this study. All 41 trauma wound cases admitted to PLEH within the
85 study period were included in the study. Ten healing surgical wound cases were randomly
86 selected for inclusion within the study in order to present a wound control group. The
87 selection criteria for surgical wounds entailed sampling 1 clean surgical wound for every 4
88 wound cases. The surgical case was selected on the basis of being admitted to the hospital at
89 the same time as the fourth wound case (or every 4 thereafter). Breeds incorporated into the
90 study included 16 Thoroughbred/Thoroughbred cross, eight Cobs, four Arab/Anglo Arabs,
91 four Warm bloods, four Welsh ponies one Hunter type, one Clydesdale, one American
92 quarter horse, one shire and nine horses and two ponies of unknown breed. The horses were
93 aged between two and 22. There were 33 colts/ geldings and 18 fillies/ mares. Informed

94 consent was obtained from the owners of the animals participating in this study. Prior to
95 sample collection all the horses included in this study had received systemic antibiotics,
96 topical antibiotics or both; however information regarding the types and duration of antibiotic
97 treatment were not recorded. No antimicrobial dressings such as Silver dressings had been
98 used prior to sample collection. Of the 51 wounds analysed, 10 were of surgical origin, and
99 41 were the result of trauma. Surgical wounds were the result of elective surgery and, trauma
100 wounds were the result of an injury caused by a foreign object. The wounds were categorised
101 as chronic or acute by the attending veterinary surgeon. Acute wounds (including all surgical
102 wounds) were seen to progress at a normal rate through each stage of the healing process, and
103 did not show signs of local or systemic infection. Wounds were classified as chronic if the
104 case description involved a non-healing wound, or if the wound showed two or more chronic
105 signs, including; bright red colouration, slimy surface, discharge, fetid odour, and/or a lack of
106 healthy granulation tissue (Goodrich, 2006). Of the 51 wounds sampled, 33 were categorised
107 as acute and 18 as chronic. A skin swab was taken from uninjured skin at the same
108 anatomical site of the horse as the wound, but on the uninjured side of the horse, for example
109 if the wound site was the left front carpus, the skin site was the right front carpus. Wounds
110 included in this study were a mixture of thoracic and limb wounds. All swab samples were
111 analysed microbiologically for aerobic and anaerobic bacteria, using traditional
112 microbiological techniques as described below. The biofilm forming potential for each isolate
113 was determined using crystal violet stained microtitre plate assays. As part of the normal
114 wound treatment, debrided tissue samples that would usually be disposed of as surgical waste
115 were removed from the edge of 5 wounds as described below. These samples underwent
116 histological staining in order to look for evidence of bacterial biofilms.

117

118 **Tissue sampling**

119

120 As part of the normal wound debridement treatment, tissue samples that were classified as
121 surgical waste were collected from the edge of the wound. Samples of the debrided tissue
122 were sectioned using a disposable eight mm punch biopsy (Amcor flexible, UK). The tissue
123 was then immediately stored in formalin (VWR, Leicestershire, UK) for 24h, and then
124 sectioned and stained with three histological stains; Gram stain, haematoxylin and eosin (H
125 and E) and Masson's trichrome (MT) stains. All Stains were made from individual reagents,
126 sourced from H.D Supplies, Buckingham, UK, V.W.R International, Leicestershire, UK,
127 Fisher Scientific UK Ltd Leicestershire, UK and Sigma-Aldrich Company Ltd, Dorset, UK.
128 The stained samples were examined under light microscopy (Nikon Eclipse 80i with digital
129 sight capture) at a magnification of x1000.

130

131 **Bacterial sample collection using swabs**

132

133 Standard microbiological protocols as described below were utilised for the sampling of the
134 wound and skin sites. All sampling procedures were performed within one to three days of
135 the horse or pony being admitted to PLEH. Wound and skin sampling sites were washed with
136 sterile saline prior to swabbing in order to remove surface debris. Swabbing involved holding
137 the sterile cotton tipped swab between the thumb and fore finger and rubbing it across a 1cm²
138 area for five seconds, as described in the Levine technique (Levine et al., 1976). Surgical
139 swabs were taken from the surface of the wound which had been closed by primary intention.
140 All wound and skin sites were swabbed in triplicate. The first swab was stored in Stuart's
141 transport medium (Oxoid Limited, Hampshire, UK) and used to isolate aerobic bacteria, the

142 second was added to Robertson's Cooked Meat Broth (Oxoid Limited, Hampshire, UK), for
143 the enrichment of anaerobic bacteria, and the third was stored in an eppendorf tube and
144 frozen at -20°C for molecular analysis.

145

146 **Bacterial isolation and identification**

147

148 Aerobic swabs were stored at 4°C and processed within 24h. Aerobic samples were
149 inoculated onto the enrichment agar Tryptone soy agar (TSA) and the selective agars;
150 MaConkey agar (MCA), Columbian blood agar (CBA), and Cysteine lactose electrolyte
151 deficient (CLED) agar (Lab M, Bury, UK). All agar plates were incubated for 24 hours at
152 37°C ($\pm 2^{\circ}\text{C}$). Swabs which had been stored in Robertson's cooked meat broth were
153 incubated at 37°C for 24 hours, and then at room temperature for 1 week. At 48 hour intervals
154 samples of this media were added to fastidious anaerobic agar (FAA) (Lab M, Bury, UK), for
155 the culture of anaerobic bacteria. The prolonged incubation period was used to enhance the
156 recovery of slow growing anaerobic species. Isolates grown in anaerobic conditions were also
157 sub-cultured onto CBA and incubated overnight in aerobic conditions at 37°C . Isolates that
158 grew in both aerobic and anaerobic conditions were identified following the aerobic protocol.

159

160 Following incubation, all the phenotypically distinct bacterial colonies were sub cultured onto
161 TSA (aerobic isolates) or FAA (anaerobic isolates). Pure bacterial colonies were identified
162 using Gram staining, oxidase testing, catalase testing, coagulase testing and biochemical
163 analysis. API identification strips (Oxoid Ltd, Hampshire, UK), Vitek identification cards

164 (BioMerieux, Hampshire, UK) and the Microseq 3130 Microbial Identification System
165 (Applied Biosystems, UK) were utilised for further species identification.

166

167 **Microtitre plate assay for the assessment of biofilm formation**

168

169 The biofilm forming potential of all the bacteria identified throughout this study was
170 measured using a published method (Wakimoto et al., 2004). In brief, colonies of individual
171 purified bacteria were inoculated into Muller Hinton Broth (MHB), and incubated overnight
172 at 37°C in an orbital incubator (50rpm). Following incubation, all the bacterial suspensions
173 were adjusted to 10^8 cfu ml⁻¹ using sterile MHB. The concentration was confirmed using a 0.5
174 McFarland standard (Stepanović et al., 2007). Then 250µl of each inoculum was transferred
175 into 3 wells of the Costar 96 well microtiter plates (Corning Costar, NY, USA). The 96 well
176 plates were incubated at 37°C for 24 h at 50 rpm in an orbital incubator. Following
177 incubation, each well was washed (x3) with sterile saline. Attached bacteria were then fixed
178 in 96% pure ethanol and then stained with 2% crystal violet. Excess crystal violet was then
179 aspirated from the wells, and the wells were washed (x3) with sterile distilled water to
180 remove all excess dye and planktonic bacteria. Each well was then filled with 200µl of 33%
181 glacial acetic acid to remove the stained biofilm. The optical density (OD) of each well was
182 measured at 570nm using an Opsys MR microtiter plate reader (DYNEX Technologies,
183 Worthing, UK). The average OD of the control wells (containing MHB only) was subtracted
184 from the OD of the test wells. All isolates and controls were tested in triplicate.

185

186 **Statistical analysis**

187

188 A Wilcoxon signed rank test was used to investigate differences in the genus and species of
189 bacteria present at wound sites compared to control sites. A Fisher's exact Chi Squared test
190 was used to assess the different kinds of bacteria found in chronic wounds compared to acute
191 wounds and in surgical wounds compared to traumatic wounds. A Mann Whitney U test was
192 used to compare the presence of different bacterial genus at each sample site, and also to
193 compare the biofilm forming ability of each bacterial genus, and the biofilms forming ability
194 of the bacteria isolated from different wound types. All statistical analysis was carried out
195 using the statistical package Minitab 15.

196

197 **Results**

198

199 **Tissue samples**

200

201 Bacterial clustering was seen in the stained tissue samples, suggesting evidence of a bacterial
202 biofilm, based on published observations and biomarkers (Parsek and Singh, 2003). Infected
203 tissue contained extensive 'thumb-print' like aggregates and microcolonies of Gram positive
204 cocci and Gram negative rods, at the epidermal surface of the debrided tissue (Figure 1).

205 Although Gram positive and Gram negative bacteria occupied the same tissue regions, more
206 often than not, they appeared to cluster in discrete segregated microcolonies. The staining
207 also highlighted extensive evidence of inflammatory cells throughout the chronic wound
208 tissue. In un-infected tissue, little or no evidence of bacteria was seen (Figure 2). This was
209 supported by a culture negative swab sample.

210

211 **Bacterial isolation**

212

213 From 51 equine skin and wound swab samples, 340 bacterial isolates were cultured (Table 2)
214 and 338 were identified to the species level. The most common bacterial species isolated
215 from wounds was *P. aeruginosa* (5.6%) and the most commonly isolated species from skin
216 was *E. faecium* (5.6%). *Staphylococcus sp* were isolated more often than most other genus
217 ($P<0.05$) and there was significant difference in the genera isolated from wound and skin
218 sites ($P<0.05$).

219

220 The wound swabs were further divided into wounds that were the result of surgery or a
221 traumatic incident, and wounds that were deemed chronic or acute (Figure 3). The average
222 number of bacterial species identified from trauma wound swabs was 3.02 ± 1.65 (range 0-8)
223 and the average number of species per surgical wound swab was 3.8 ± 3.82 (range 1-14).
224 Fourteen isolates were identified from only one surgical wound. At a genus level, the number
225 of isolates identified per swab for trauma and surgical wounds was 2.51 ± 1.36 (range 0-6)
226 and 2.8 ± 1.87 (range 1-7) respectively. Again the mean number of surgical wound isolates
227 obtained per swab was increased due to the inclusion of the surgical wound containing 14
228 isolates.

229

230 The species most often isolated from traumatic wound swabs and surgical swabs was *P.*
231 *aeruginosa*, where *P. aeruginosa* made up 4.84% and 7.89% respectively, of the total
232 identified species. However the most commonly isolated genus in both traumatic and surgical

233 wounds was *Staphylococcus*, which respectively made up 22.58% and 18.42% of the total
234 identified bacterial load. The *Staphylococcus* species cultured from equine wounds included;
235 *S. aureus*, *S. auricularis*, *S. epidermidis*, *S. xylosum*, *S. Sciuri*, *S. simulans*, *S. warneri*, *S.*
236 *equorum*, *S. hominis*, and *S. pasteurii*. *Proteus* sp, *Acinetobacter* sp, *Salmonella* sp,
237 *Alcaligenes* sp, *Propionibacterium* sp, *Bordetella* sp, *Cellulomonas* sp, were found exclusively
238 in trauma wounds. Furthermore the prevalence of *Staphylococcus* sp in traumatic wounds
239 was greater than the prevalence of *Micrococcus* sp, *Enterococcus* sp, *E. coli* sp, *Enterobacter*
240 sp, *Alcaligenes* sp, *Clostridium* sp, *Propionibacterium* sp, *Bordetella* sp, and *Cellulomonas*
241 sp ($P < 0.05$).

242

243 Of the 162 identified wound isolates, 32.72% were of chronic wound origin, and 67.28%
244 were isolated from acute wounds. *Pseudomonas* spp were significantly ($P < 0.05$) more
245 prevalent in chronic wounds than acute wounds. This kind of variation may be occurring
246 between other genus such as *Proteus* and *Enterobacter*, but this difference was not significant
247 with the current sample size. The genera *Aerococcus*, *Micrococcus*, *Alcaligenes*, and isolates
248 that could not be identified, were isolated exclusively from acute wounds, but no significant
249 difference was seen in the data (Figure 4).

250

251 In chronic wounds, *Pseudomonas* spp were identified significantly more often than
252 *Aerococcus* spp, *Micrococcus* spp, *Pasturella* spp, *Corynebacterium* spp, *Alcaligenes* spp,
253 *Bordetella* spp, and *Cellulomonas* spp ($P < 0.01$) and to a lesser extent ($P < 0.05$), *Bacillus* spp,
254 *Acinetobacter* spp, *Salmonella* spp, *E. coli*, *Clostridium* spp. and *Propionibacterium* spp. No
255 significant difference was seen in the isolation prevalence of the other identified bacterial

256 genus within chronic wounds, and there was no significant difference in the prevalence of
257 isolates cultured from acute wounds.

258

259 Obligate anaerobic isolates were recovered from swabs and made up 6.8% and 7.3 % of the
260 total wound and skin isolates respectively. There was no significant difference in the amount
261 of times obligate anaerobes were identified from wound and skin swabs or between the
262 anaerobic recovery rate from the swabs used to sample different wound types.

263

264 **Microtitre plate assay for the assessment of biofilm formation**

265

266 The species *Aerococcus viridans* 3, *S. warneri*, *B. licheniformis*, *B. pumilus*, and
267 *Acinetobacter* spp. all showed significantly stronger biofilm formation when they were
268 isolated from wounds compared to skin ($P < 0.05$). *Enterococcus durans* was the only species
269 to show significantly higher biofilm formation (BFP) when isolated from skin than from
270 wounds ($P < 0.05$). Collectively the bacteria isolated from wounds displayed a significantly
271 ($P < 0.05$) higher BFP than those isolated from skin. Wound isolates had an average BFP value
272 of 0.50 ± 0.35 and skin isolates had an average value of 0.32 ± 0.30 . An optical density
273 above 0.2 was indicative of bacteria that showed a level of adherence linked to biofilm
274 formation (Table 1) (Stepanovic et al., 1999).

275 At a genus level, the wound isolates *Pseudomonas*, *Proteus*, *Bacillus* and *Aerococcus*
276 displayed significantly stronger attachment, indicative of biofilm formation, than the
277 equivalent skin isolates ($P < 0.05$) (Figure 5). *Pseudomonas* and *Proteus* spp. wound isolates
278 displayed strong adherence ($OD > 0.4$) and *Bacillus* and *Aerococcus* spp. displayed moderate

279 adherence (OD between 0.2 and 0.4). The genus *Moraxella* produced the highest wound
280 isolate OD (OD = 2.17 ± 1.33), but the largest OD recorded was from skin isolates of
281 *Myroides* bacteria (OD = 2.46 ± 0.05). These values were suggestive of extremely strong
282 adherence and thus a strong BFP. The genera *Burkholderia* sp, *Shigella* sp, *Yersinia* sp,
283 *Rhizobium* sp, *Sphingomonas* sp, *Pasteurella* sp and *Aeromonas* sp were isolated exclusively
284 from skin swabs. These isolates had ODs of between 0.01 and 0.37.

285 The BFP of Gram negative trauma wound isolates was significantly ($P < 0.01$) greater than
286 those of Gram negative surgical wound isolates. However there was no significant difference
287 in the BFP of Gram positive isolates sampled from trauma and surgical wounds. At a species
288 level the species *S. epidermidis*, *S. xylosum*, *B. subtilis*, *Enterococcus faecalis* and
289 *Enterobacter cloacae* all displayed a stronger BFP when isolated from surgical wounds than
290 when they were isolated from trauma wounds. Similarly, *Enterobacter cloacae* and
291 *Bordetella pertussis* both displayed a stronger biofilm forming potential when they were isolated
292 from acute wounds compared to chronic wounds.

293

294 There were significant differences ($P < 0.05$) in the BFP of different isolates within trauma
295 wounds. The Gram positive isolates *Staphylococcus* spp. *Micrococcus* spp. *Bacillus* spp.
296 and *Enterococcus* spp. and the Gram negative *Pseudomonas* isolates all showed significantly
297 ($P < 0.05$) greater attachment than *Enterobacter* spp.

298

299 **Discussion**

300

301 Tissue samples taken from chronic equine wounds displayed morphologically similar
302 bacterial clustering to those seen in human biofilm infected wounds (Costerton et al., 1994).
303 Bacteria displayed a greater BFP when they were isolated from wounds compared to skin,
304 suggesting that equine wounds harbour bacterial pathogens which display the biofilm
305 phenotype more commonly than the equivalent skin isolates. Chronic equine wounds did not
306 harbour bacteria that displayed a stronger BFP than acute wound. An explanation for this is
307 that culture results are heavily weighted towards easily cultured organisms (Dowd et al.,
308 2008). If biofilm forming isolates in chronic wounds were encased within a bacterial biofilm,
309 as suggested by the tissue sections, then the chance of a false negative culture may have been
310 increased (Costerton et al., 2003).

311

312 Equine wounds were polymicrobial and contained pathogens which were significantly more
313 prevalent in chronic wounds than acute wounds. *Aerococcus viridians*, *S. warneri* and
314 *Acinetobacter* Spp. demonstrated greater BFP when they were isolated from equine wounds
315 compared to when they were isolated from equine skin. In human studies *Aerococcus*
316 *viridians* has been linked to leg ulcers (Cooper et al., 2009) and infected surgical wounds
317 (Huljev and Kucisec-Tepes, 2005), *S. warneri* has been linked to osteomyelitis (Bryan et al.,
318 1987) and endocarditis (Wood et al., 1989) infections, and *Acinetobacter* Spp. have been
319 repeatedly linked to chronic wounds (Gjodsbol et al., 2006; Hill et al., 2003; James et al.,
320 2008). These pathogens may have contributed to the healing retardation of the chronic
321 wounds in this study. Interestingly *B. licheniformis* and *B. pumilus* also demonstrated a
322 greater BFP when isolated from wound sites compared to skin sites but previous literature has
323 highlighted their ability to disrupt *S. aureus* (Rivardo et al., 2009) and *Pseudomonas* (Nithya
324 et al., 2010) biofilms.

325

326 This study used bacterial attachment as a measure of BFP. Most of the species displayed
327 some ability to attach to the polystyrene surface suggesting that the adaptive mechanism of
328 biofilm formation is exhibited to some degree by the majority of wound colonising bacteria.
329 The degree to which different bacterial species attached to the polystyrene surface of the
330 microtitre plate wells was variable, reflecting the fact that not all organisms have an equal
331 ability to attach to polystyrene (Harrison et al., 2010). As such, *in vitro* attachment may not
332 accurately reflect *in vivo* attachment. Variations in the *in vivo* attachment are also likely to
333 reflect the synergistic interactions of the colonising/ infecting populations (Cooper et al.,
334 2009). All the horses in this study were receiving antibiotic treatment. The antibiotic
335 challenge may have favoured the biofilm forming phenotype (Dancer, 2008) however this
336 accurately reflects the clinical situation in which biofilms are problematic.

337

338 The OD of bacteria attached to the 96 well plates, ranged from 0 to 2.46. These values
339 concurred with previously presented data for 24 hour biofilms (Djordjevic et al., 2002).
340 However the range in this study was slightly larger than the range reported in some previous
341 studies. Previous data was obtained for single species biofilms for example *Staphylococcus*
342 biofilms, *E coli* biofilms and *Listeria monocytogenes* biofilms were assessed by Stepanovic *et*
343 *al* (1999), Wakimoto *et al* (2004) and Djordevic *et al* (2002) respectively. The multispecies
344 nature of this investigation explains the large range of OD values obtained in this study.
345 Knowledge about the BFP of different bacterial species allows researchers and clinicians to
346 recognize the isolates most likely to form a biofilm. Further work would be required in order
347 to advise appropriate treatment and prevention strategies for the removal of bacterial biofilms
348 from equine wounds, however if their aetiology is assumed to be similar to that of human

349 diabetic ulcers, thorough debridement coupled with appropriate antibiotic treatment would be
350 proposed (Davis et al., 2006).

351

352 The isolation of multiple bacterial species per swab supports the theory that equine *in vivo*
353 wound environments harbour a polymicrobial community of microorganisms (Freeman et al.,
354 2009). However it has been well reported that the culture of isolates using a swabbing
355 technique can result in an overrepresentation of surface bacteria such as *S. aureus* and an
356 underrepresentation of isolates that reside more deeply within the wound (Fazli et al., 2009).
357 Despite this observation, these authors deemed swabbing to be the most appropriate sampling
358 technique for this study due to its un-invasive nature. In human diabetic foot ulcers the
359 synergistic interactions of bacteria are thought to promote an environment that supports the
360 development and maintenance of a chronic wound (Dowd et al., 2008). The evidence
361 presented in this paper suggests that this scenario is also likely in chronic equine wounds,
362 adding weight to the theory that equine wounds provide a good model for human chronic
363 wounds (Cochrane, 2003).

364

365 Microbial diversity varies between acute and chronic wounds, for example *Pseudomonas* spp.
366 were more common in chronic wounds than acute wounds ($P < 0.05$). The opportunistic
367 pathogenesis of isolates such as *Pseudomonas* have been well documented (MacDonald et al.,
368 1994). The possibility that opportunistic pathogens are resisting standard treatments by
369 residing in a biofilm is of great medical importance, in terms of individual cases and
370 antibiotic usage in veterinary medicine (Van den Eede et al., 2009). *Staphylococcus* and
371 *Enterococcus* spp. were also seen to colonise chronic wounds, supporting earlier work which

372 highlighted their presence in traumatic (Orsini et al., 2004) and in surgical equine wounds
373 (MacDonald et al., 1994).

374

375 Recognising and understanding biofilms in equine wounds would help to guide appropriate
376 management strategies for the treatment of recalcitrant wounds in horses. The use of
377 appropriate anti-biofilm therapies in equine wounds may help to improve equine welfare by
378 increasing healing rates and help to decrease the emergence of antibiotic resistant bacterial
379 strains in response to inappropriate and ineffective antibiotics.

380

381 **Conclusion**

382

383 This paper has highlighted preliminary evidence supporting the presence of biofilms in
384 equine chronic wounds. The presence of these biofilms could partly explain the reluctance of
385 many lower limb equine wounds to heal in a timely manner, despite the use of traditional
386 wound management strategies.

387

388 Multiple bacterial species can be isolated from equine skin and wounds providing evidence of
389 a microbial community that is not removed by standard wound cleansing. Although wound
390 colonisation does not necessarily prevent wound closure, the presence of multiple bacterial
391 species capable of biofilm formation suggests that these bacteria may be surviving and
392 proliferating within a biofilm and subsequently hindering wound closure.

393

394 **Acknowledgements**

395

396 The authors wish to thank ConvaTec Ltd for funding this project.

397

Accepted Manuscript

398 **References**

399

- 400 Adam, E.N., Southwood, L.L., 2006, Surgical and Traumatic Wound Infections, Cellulitis,
401 and Myositis in Horses. *Veterinary Clinics of North America: Equine Practice* 22,
402 335-361.
- 403 Bjarnsholt, T., Kirketerp-Møller, K., Jensen, P.Ø., Madsen, K.G., Phipps, R., Krogfelt, K.,
404 Høiby, N., Givskov, M., 2008, Why chronic wounds will not heal: a novel hypothesis.
405 *Wound Repair and Regeneration* 16, 2-10.
- 406 Bryan, C.S., Parisi, J.T., Strike, D.G., 1987, Vertebral osteomyelitis due to *Staphylococcus*
407 *warneri* attributed to a hickman catheter. *Diagnostic Microbiology and Infectious*
408 *Disease* 8, 57-59.
- 409 Cochrane, C.A., Pain, R., Knottenbelt, D K., 2003, *In-vitro* wound contraction in the horse:
410 differences between body and limb wounds. *Wounds* 15, 175-181.
- 411 Cooper, R.A., Ameen, H., Price, P., McCulloch, D.A., Harding, K.G., 2009, A clinical
412 investigation into the microbiological status of 'locally infected' leg ulcers.
413 *International Wound Journal* 6, 453-462.
- 414 Costerton, J.W., Lewandowski, Z., DeBeer, D., Caldwell, D., Korber, D., G., J., 1994,
415 Biofilms the cutomised Microniche. *Journal of Bacteriology* 176, 2137-2142.
- 416 Costerton, W., Veeh, R., Shirtliff, M., Pasmore, M., Post, C., Ehrlich, G., 2003, The
417 application of biofilm science to the study and control of chronic bacterial infections.
418 *The Journal of Clinical Investigation* 112, 1466-1477.
- 419 Dancer, S.J., 2008, The effect of antibiotics on methicillin-resistant *Staphylococcus aureus*.
420 *Journal of Antimicrobial Chemotherapy* 61, 246-253.
- 421 Davis, S.C., Martinez, L., Kirsner, R., 2006, The diabetic foot: the importance of biofilms
422 and wound bed preparation. *Curr Diab Rep* 6, 439 - 445.
- 423 Davis, S.C., Ricotti, C., Cazzaniga, A., Welsh, W., Eaglstein, W.H., Mertz, P.M., 2008,
424 Microscopic and physiologic evidence for biofilm-associated wound colonization in
425 vivo. *Wound Repair and Regeneration* 16, 23-29.
- 426 Djordjevic, D., Wiedmann, M., McLandsborough, L.A., 2002, Microtiter plate assay for
427 assessment of *Listeria monocytogenes* biofilm formation *Applied and Environmental*
428 *Microbiology* 68, 2950-2958.
- 429 Dowd, S.E., Wolcott, R.D., McKeenan, Y.S.T., Smith, E., Rhoads, D. 2008. Polymicrobial
430 nature of chronic diabetic foot ulcer biofilm infections determined using bacterial tag
431 encoded FLX amplicon pyrosequencing bTEFAP. (PMCID: PMC2556099), p. e3326.
- 432 Fazli, M., Bjarnsholt, T., Kirketerp-Moller, K., Jorgensen, B., Andersen, A.S., Krogfelt,
433 K.A., Givskov, M., Tolker-Nielsen, T., 2009, Nonrandom distribution of
434 *Pseudomonas aeruginosa* and *Staphylococcus aureus* in chronic wounds.
435 *J.Clin.Microbiol.* 47, 4084-4089.
- 436 Freeman, K., Woods, E., Welsby, S., Percival, S.L., Cochrane, C.A., 2009, Biofilm evidence
437 and the microbial diversity of horse wounds. *Canadian Journal of Microbiology* 55,
438 197-202.
- 439 Gjodsbol, K., Christensen, J.J., Karlsmark, T., Jorgensen, B., Klein, B.M., Krogfelt, K.A.,
440 2006, Multiple bacterial species reside in chronic wounds: a longitudinal study. *Int*
441 *Wound J* 3, 225 - 231.
- 442 Goodrich, L.R., 2006, Osteomyelitis in horses. *Vet Clin North Am Equine Pract.* 22, 389-
443 417.

- 444 Harrison, J.J., Stremick, C.A., Turner, R.J., Allan, N.D., Olson, M.E., Ceri, H., 2010,
445 Microtiter susceptibility testing of microbes growing on peg lids: a miniaturized
446 biofilm model for high-throughput screening. *Nat. Protocols* 5, 1236-1254.
- 447 Hill, K.E., Davies, C.E., Wilson, M.J., Stephens, P., Harding, K.G., Thomas, D.W., 2003,
448 Molecular analysis of the microflora in chronic venous leg ulceration. *J Med*
449 *Microbiol* 52, 365-369.
- 450 James, G.A., Swogger, E., Wolcott, R., Pulcini, E.D., Secor, P., Sestrich, J., Costerton, J.W.,
451 Stewart, P.S., 2008, Biofilms in chronic wounds. *Wound Repair Regen* 16, 37 - 44.
- 452 Leid, J.G., Shirtliff, M.E., Costerton, J.W., Stoodley, A.P., 2000, Human leukocytes adhere
453 to, penetrate, and respond to *Staphylococcus aureus* biofilms. *Infect Immun* 70, 6339-
454 6345.
- 455 Levine, N.S., Col, L.T., Lindberg, R.B., Mason, A.D., Prutt, M.D., Basil, A., Colonel, M.C.,
456 1976, The quantitative swab culture and smear: A quick, simple method for
457 determining the number of viable aerobic bacteria on open wounds. *The Journal of*
458 *Trauma* 16, 89-94.
- 459 MacDonald, D.G., Morley, P.S., Bailey, J.V., Barber, S.M., Fretz, P.B., 1994, An
460 examination of the occurrence of surgical wound infection following equine
461 orthopaedic surgery (1981-1990). *Equine Veterinary Journal* 6, 323-326.
- 462 Mertz, P.M., 2003, Cutaneous Biofilms: Friend or Foe? *Wounds* 15, 129-132.
- 463 Nithya, C., Begum, M.F., Pandian, S.K., 2010, Marine bacterial isolates inhibit biofilm
464 formation and disrupt mature biofilms of *Pseudomonas aeruginosa* PAO1. *Appl*
465 *Microbiol Biotechnol* 88, 341-358.
- 466 Orsini, J.A., Elce, Y., Kraus, B., 2004, Management of severely infected wounds in the
467 equine patient. *Clinical Techniques in Equine Practice* 3, 225-236.
- 468 Parsek, M.R., Singh, P.K., 2003, Bacterial biofilms: an emerging link to disease
469 pathogenesis. *Annu Rev Microbiol* 57, 677-701.
- 470 Rivardo, F., Turner, R., Allegrone, G., Ceri, H., Martinotti, M., 2009, Anti-adhesion activity
471 of two biosurfactants produced by *Bacillus spp.* prevents biofilm formation of human
472 bacterial pathogens. *Applied Microbiology and Biotechnology* 83, 541-553.
- 473 Singer, E.R., Saxby, F., French, N.P., 2003, A retrospective case-control study of horse falls
474 in the sport of horse trials and three-day eventing. *Equine Veterinary Journal* 35, 139-
475 145.
- 476 Stepanovic, S., Vukovic, D., Dakic, I., Savic, B., Svabic-Viahovic, M., 1999, A modified
477 microtiter-plate test for quantification of *Staphylococcal* biofilm formation. *Journal of*
478 *Microbiological Methods* 40, 175-179.
- 479 Stepanović, S., Vuković, D., Hola, V., Bonaventura, G.D., Djukić, S., Ćirković, I.,
480 Ruzicka, F., 2007, Quantification of biofilm in microtiter plates: overview of testing
481 conditions and practical recommendations for assessment of biofilm production by
482 staphylococci. *APMIS* 115, 891-899.
- 483 Stewart, P.S., Costerton, J.W., 2001, Antibiotic resistance of bacteria in biofilms. *The Lancet*
484 358, 135-138.
- 485 Van den Eede, A., Martens, A., Lipinska, U., Struelens, M., Deplano, A., Denis, O.,
486 Haesebrouck, F., Gasthuys, F., Hermans, K., 2009, High occurrence of methicillin-
487 resistant *Staphylococcus aureus* ST398 in equine nasal samples. *Veterinary*
488 *Microbiology* 133, 138-144.
- 489 Wakimoto, N., Nishi, J., Sheikh, J., Nataro, J.P., Sarantuya, J., Washita, M., Manago, K.,
490 Tokuda, K., Yoshinaga, M., Kawano, Y., 2004, Quantitative biofilm assay using a
491 microtiter plate to screen for enteroaggregative *Escherichia coli*. *American Journal of*
492 *Tropical Medicine and Hygiene* 7, 687-690.

495 **Table 1.** The interpretation of optical density values. These values were obtained from
496 bacteria which had attached to the 96 well plate and been stained with crystal violet
497 (Stepanovic *et al*, 1999)

498

499 **Table 2.** The number of times each genus was identified from wound and skin swabs. The
500 number shown in brackets is the total number of species identified in that genus. When a
501 genus could not be identified to the species level it was reported as Spp. Spp was counted as
502 1 species.

503

504 **Figure 1.** Gram stained debrided tissue taken from a chronic, non healing equine lower limb
505 wound, showing evidence of Gram negative (arrow heads) and Gram positive (long arrows)
506 and individual colonies (elbow arrows). The epidermal edge of the wound is to the left of the
507 image. (x1000 magnification).

508

509 **Figure 2.** Gram stained debrided tissue taken from a chronic, non healing equine lower limb
510 wound, showing an area of uninfected tissue. The epidermal edge of the wound is visible on
511 the bottom right of the image. (x1000 magnification) (Bar +100µm).

512

513 **Figure 3.** Hierarchical flow diagram showing the number of each wound type included in the
514 study. Control swabs were also taken from the uninjured skin of all the 51 cases.

515

516 **Figure 4.** Percentage representation of bacterial genera isolated from chronic wounds (black
517 bar) and acute wounds (grey bar) (n=51). * - significant difference between chronic and acute
518 wounds $P < 0.05$.

519

520 **Figure 5.** A comparison between the OD of wound (Black bars) and Skin (Grey bars)
521 isolates. The upper graph shows Gram positive isolates and the lower graph shows Gram
522 negative isolates. * show significant differences between wound and skin OD values * -
523 $P < 0.05$, ** - $P < 0.01$.

The interpretation of the optical density values obtained from the crystal violet assays

Optical Density	Interpretation
0	Non-adherent
≤ 0.2	Weakly adherent
$> 0.2 - \leq 0.4$	Moderately adherent
> 0.4	Strongly adherent

Table 1. The interpretation of OD values obtained from the attachment of bacteria grown on 96 well plates as part of a crystal violet assay. Stepanovic *et al*, 1999.

Genus	Wound samples (N = 51)		Skin samples (N = 51)	
	Number of times the genus was isolated	Number of species represented	Number of times the genus was isolated	Number of species represented
<i>Staphylococcus</i> (14)	35	10	34	14
<i>Bacillus</i> (8)	16	6	17	7
<i>Enterococcus</i> (6)	16	5	16	5
<i>Pseudomonas</i> (6)	15	5	10	5
<i>Uncultured bacterium</i>	13	*	12	*
<i>Clostridium</i> (3)	6	2	11	3
<i>Escherichia</i> (1)	4	1	7	1
<i>Acinetobacter</i> (4)	5	2	5	4
<i>Propionibacterium</i> (1)	5	1	4	1
<i>Micrococcus</i> (2)	3	2	4	1
<i>Proteus</i> (2)	4	2	2	1
<i>Enterobacter</i> (2)	4	1	2	1
<i>Bordetella</i> (1)	4	1	2	1

<i>Aerococcus</i> (4)	3	2	2	2
<i>Pasteurella</i> (2)	0	*	5	2
<i>Cellulomonas</i> (1)	2	1	3	1
<i>Aeromonas</i> (1)	0	*	4	1
<i>Salmonella</i> (2)	2	1	2	2
<i>Corynebacterium</i> (1)	0	0	4	1
<i>Alcaligenes</i> (2)	2	2	2	2
Others (33)	23	18	27	22
No Identification	1	*	2	*

Table 2. The number of times each genus was identified from wound and skin swabs. The number shown in brackets is the total number of species identified in that genus. When a genus could not be identified to the species level it was reported as Spp. Spp was counted as 1 species.

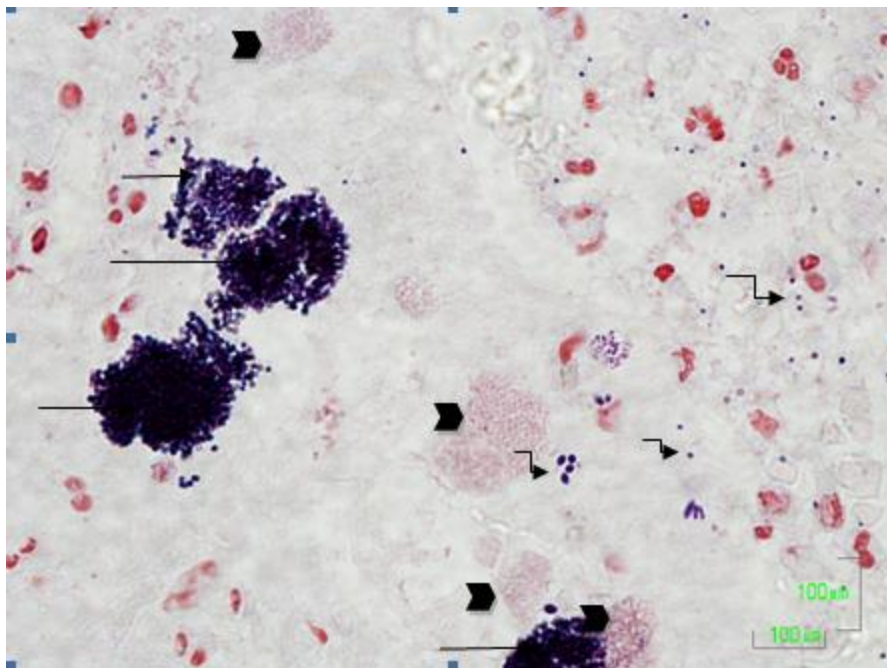


Figure 1. Gram stained debrided tissue taken from a chronic, non healing equine lower limb wound, showing evidence of Gram negative (arrow heads) and Gram positive (long arrows) and individual colonies (elbow arrows). The epidermal edge of the wound is to the left of the image. (x1000 magnification).

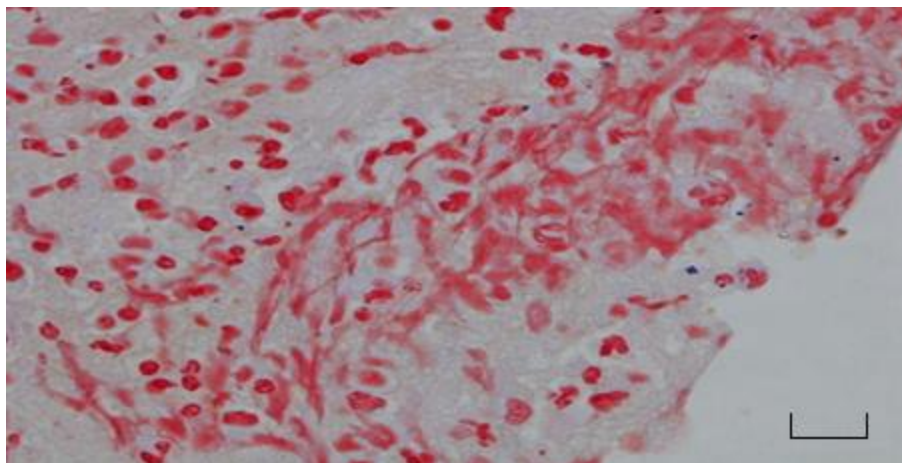


Figure 2. Gram stained debrided tissue taken from a chronic, non healing equine lower limb wound, showing an area of uninfected tissue. The epidermal edge of the wound is visible on the bottom right of the image. (x1000 magnification) (Bar +100 μ m).

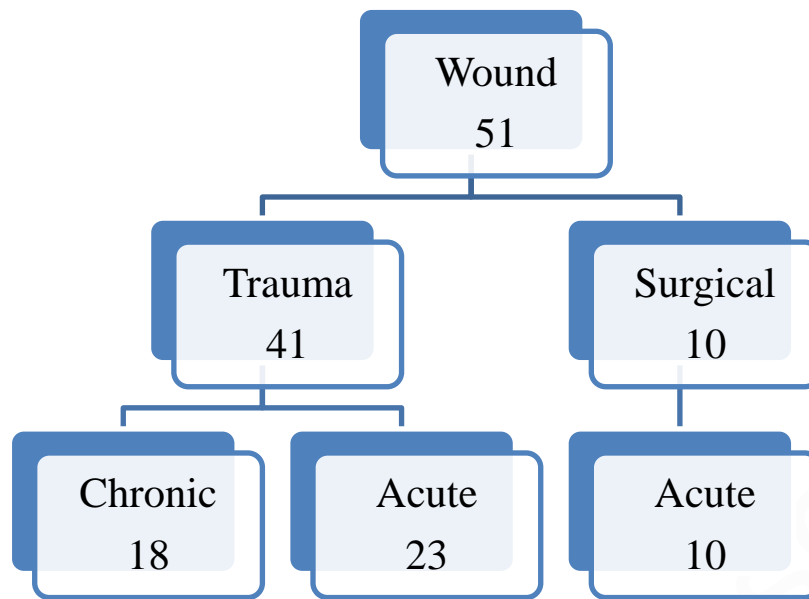


Figure 3. Hierarchical flow diagram showing the number of each wound type included in the study. Control swabs were also taken from the uninjured skin of all the 51 cases.

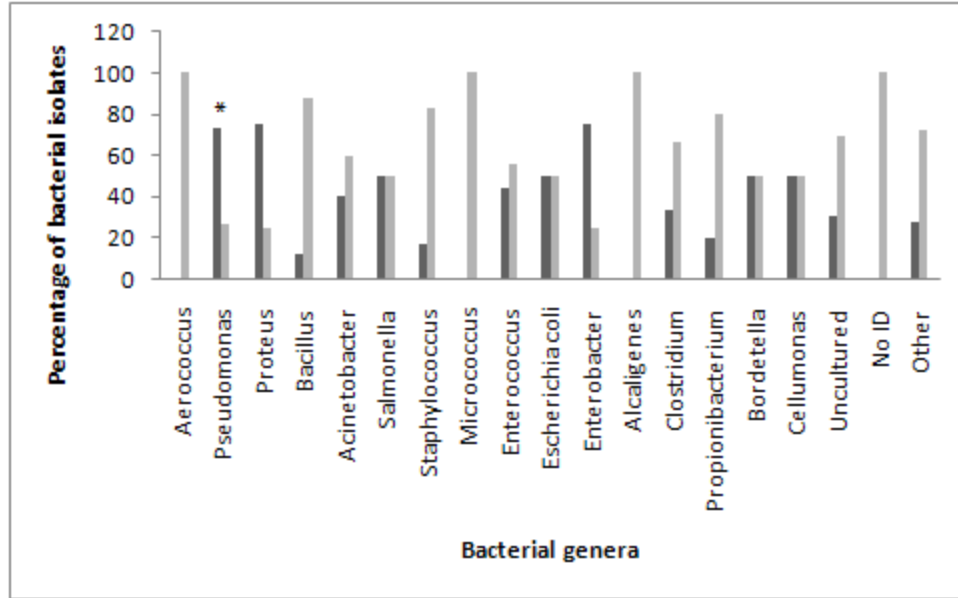


Figure 4. Percentage representation of bacterial genera isolated from chronic wounds (black bar) and acute wounds (grey bar) (n=51). * - significant difference between chronic and acute wounds $P < 0.05$.

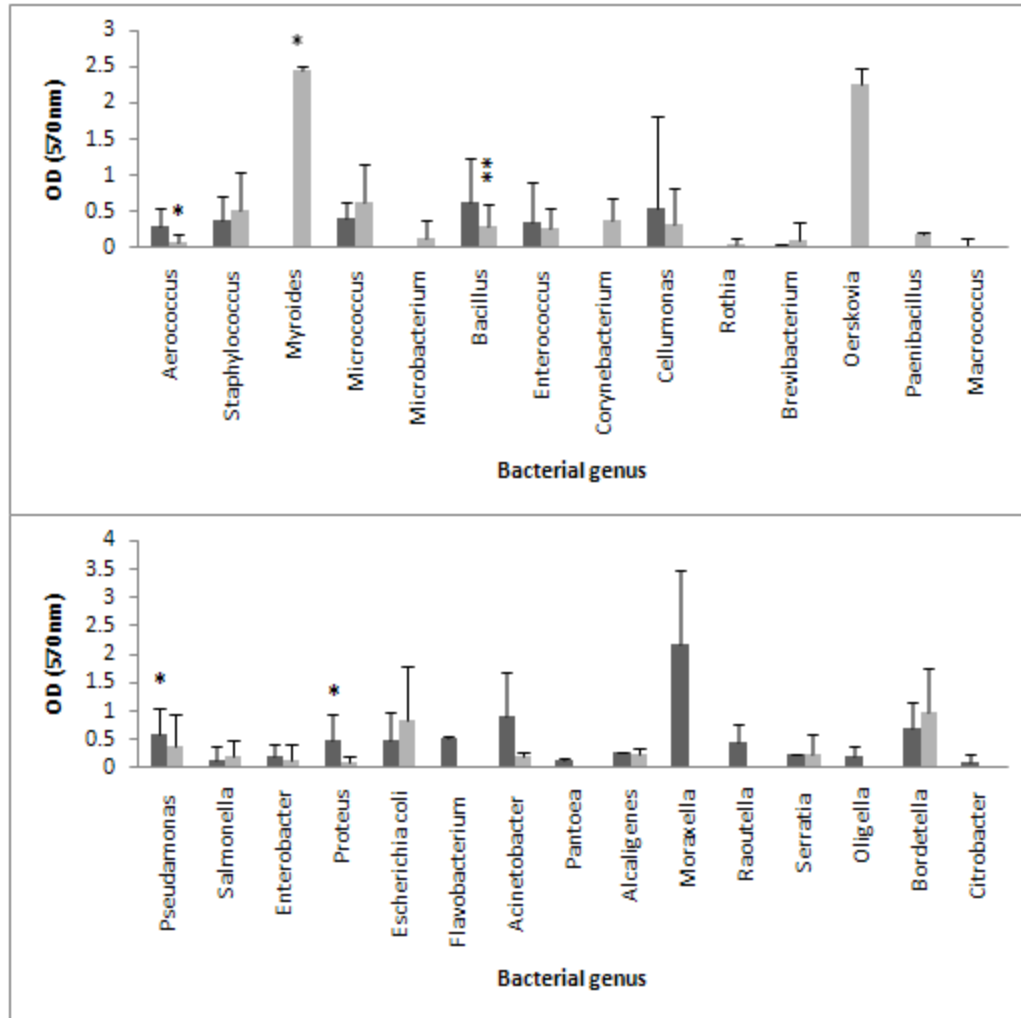


Figure 5. A comparison between the OD of wound (Black bars) and Skin (Grey bars) isolates.

The upper graph shows Gram positive isolates and the lower graph shows Gram negative

isolates. * show significant differences between wound and skin OD values * - $P < 0.05$, ** -

$P < 0.01$.

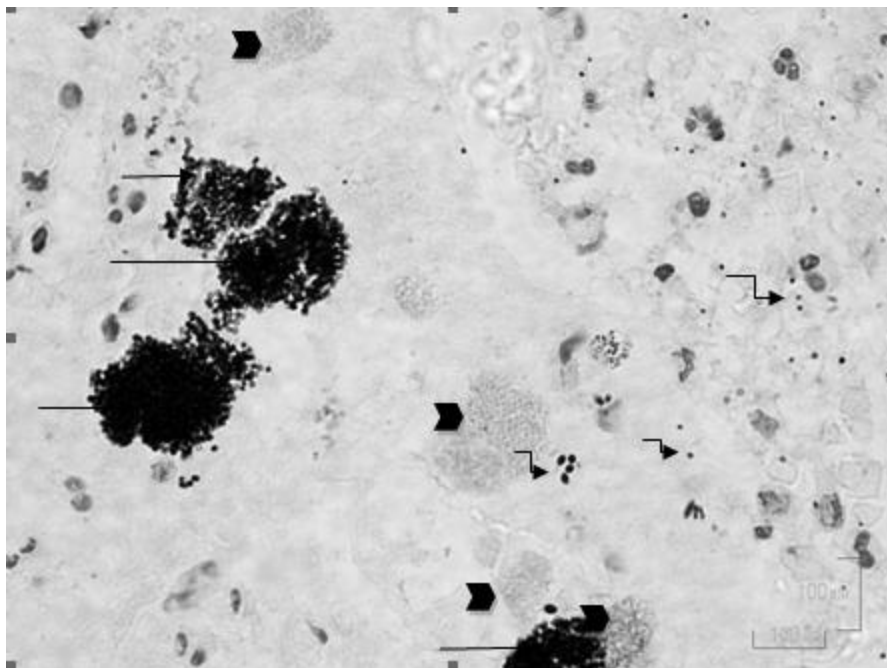


Figure 1. Gram stained debrided tissue taken from a chronic, non healing equine lower limb wound, showing evidence of Gram negative (arrow heads) and Gram positive (long arrows) and individual colonies (elbow arrows). The epidermal edge of the wound is to the left of the image. (x1000 magnification).

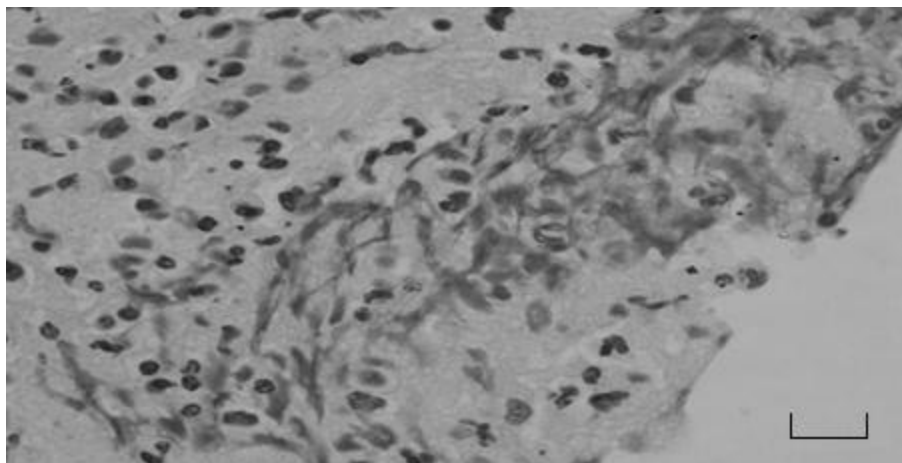


Figure 2. Gram stained debrided tissue taken from a chronic, non healing equine lower limb wound, showing an area of uninfected tissue. The epidermal edge of the wound is visible on the bottom right of the image. (x1000 magnification) (Bar +100 μ m).

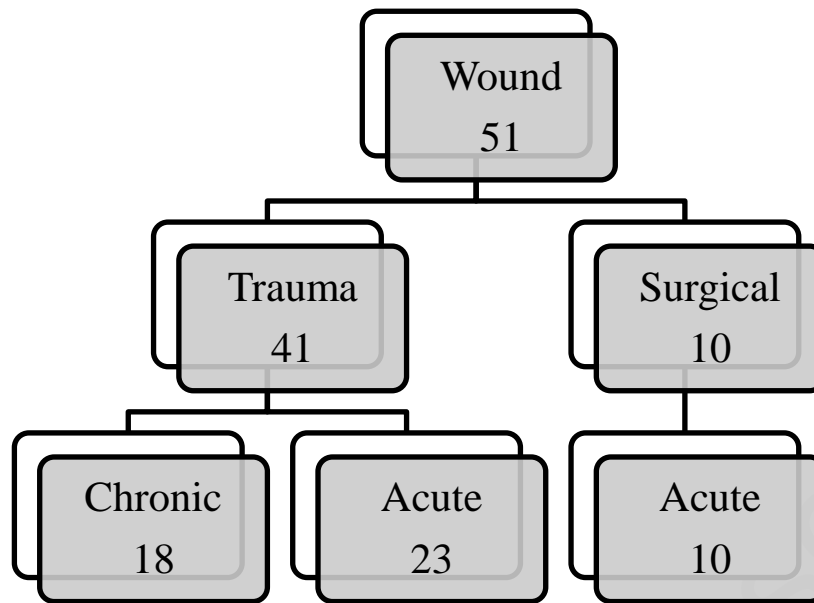


Figure 3. Hierarchical flow diagram showing the number of each wound type included in the study. Control swabs were also taken from the uninjured skin of all the 51 cases.