



HAL
open science

Spatial distribution and corresponding determining factors of metal concentrations in surface sediments of Beppu Bay, southwest Japan

Atsuko Amano, Michinobu Kuwae, Tetsuro Agusa, Koji Omori, Hidetaka Takeoka, Shinsuke Tanabe, Takashige Sugimoto

► **To cite this version:**

Atsuko Amano, Michinobu Kuwae, Tetsuro Agusa, Koji Omori, Hidetaka Takeoka, et al.. Spatial distribution and corresponding determining factors of metal concentrations in surface sediments of Beppu Bay, southwest Japan. *Marine Environmental Research*, 2011, 71 (4), pp.247. 10.1016/j.marenvres.2011.01.009 . hal-00682415

HAL Id: hal-00682415

<https://hal.science/hal-00682415v1>

Submitted on 26 Mar 2012

HAL is a multi-disciplinary open access archive for the deposit and dissemination of scientific research documents, whether they are published or not. The documents may come from teaching and research institutions in France or abroad, or from public or private research centers.

L'archive ouverte pluridisciplinaire **HAL**, est destinée au dépôt et à la diffusion de documents scientifiques de niveau recherche, publiés ou non, émanant des établissements d'enseignement et de recherche français ou étrangers, des laboratoires publics ou privés.

Accepted Manuscript

Title: Spatial distribution and corresponding determining factors of metal concentrations in surface sediments of Beppu Bay, southwest Japan

Authors: Atsuko Amano, Michinobu Kuwae, Tetsuro Agusa, Koji Omori, Hidetaka Takeoka, Shinsuke Tanabe, Takashige Sugimoto



PII: S0141-1136(11)00020-1

DOI: [10.1016/j.marenvres.2011.01.009](https://doi.org/10.1016/j.marenvres.2011.01.009)

Reference: MERE 3505

To appear in: *Marine Environmental Research*

Received Date: 4 December 2009

Revised Date: 14 May 2010

Accepted Date: 27 January 2011

Please cite this article as: Amano, A., Kuwae, M., Agusa, T., Omori, K., Takeoka, H., Tanabe, S., Sugimoto, T. Spatial distribution and corresponding determining factors of metal concentrations in surface sediments of Beppu Bay, southwest Japan, *Marine Environmental Research* (2011), doi: 10.1016/j.marenvres.2011.01.009

This is a PDF file of an unedited manuscript that has been accepted for publication. As a service to our customers we are providing this early version of the manuscript. The manuscript will undergo copyediting, typesetting, and review of the resulting proof before it is published in its final form. Please note that during the production process errors may be discovered which could affect the content, and all legal disclaimers that apply to the journal pertain.

Spatial distribution and corresponding determining factors of metal concentrations in surface sediments of Beppu Bay, southwest Japan

Atsuko Amano¹, Michinobu Kuwae², Tetsuro Agusa³, Koji Omori⁴, Hidetaka Takeoka⁴, Shinsuke Tanabe⁴,
Takashige Sugimoto⁵

¹: Geological Survey of Japan, National Institute of Advanced Industrial Science and Technology, 1-1-1 Higashi,
Tsukuba 305-8567, Japan

²: Senior Research Fellow Center, Ehime University, Bunkyo-cho 2-5, Matsuyama 790-8577, Japan

³: Department of Legal Medicine, Faculty of Medicine, Shimane University, Shioji 89-1, Izumo, Shimane
693-8501, Japan

⁴: Center for Marine Environmental Studies, Ehime University, Bunkyo-cho 2-5, Matsuyama 790-8577, Japan

⁵: Institute of Oceanic Research and Development, Tokai University, Shizuoka 424-8610, Japan

Corresponding author. Tel.: +81 29 861 3767; fax: +81 29 861 3747.

E-mail address: amano-a@aist.go.jp (A. Amano)

Abstract

This study determined the factors contributing to the spatial distribution of 14 metal concentrations in

the surface sediments of Beppu Bay on the basis of comparisons of the organic geochemical properties and environmental parameters through principal component analysis (PCA) and redundancy analysis (RDA). The results of PCA and RDA showed that the concentrations of V, Cr, Co, and As were closely related to the distances between the sampling sites and the Oita River. This indicated that these metals originated from the river's drainage area. The Mn, Cu, Mo, and Cd concentrations were related to the water depth. These results indicated that the Mo, Cd, and Cu deposition processes were controlled by oxygen depletion, and that these elements accumulated in the deeper parts of the bay under anoxic conditions.

Keywords: surface sediment; metal; organic geochemical property; redox condition; PCA; RDA

1. Introduction

Semi-enclosed coastal areas such as estuaries and bays are characterized by stagnant conditions and the supply with water inflow from land. As a result, materials supplied from the watershed area accumulate in this type of coastal areas, which is likely to cause environmental pollution. In particular, recent human activities have had a strong impact on these semi-enclosed environments. In order to identify the causes of marine pollution, it is important to determine the sources and transfer processes of pollutants. However, the physical transport processes in a coastal area are very complicated because of drastic environmental changes to the border

between land and sea. In particular, the metal elements in sediments can originate from many sources, such as minerals, biogenic materials, and urban and industrial human activities, and they have complex deposition processes. Therefore, it is often difficult to determine the main factor driving the transfer and deposition processes for metals in sediments. In an effort to understand the supply sources and deposition processes of metals in semi-enclosed areas, many studies have attempted to determine the spatial distribution of metal concentrations in surface sediments and explain the controlling factors through simple correlations and principal component analysis (PCA) (e.g., Ergin et al., 1991; Rubio et al., 2002; Cassia et al., 2003; Reid and Spencer, 2009). These studies elucidated the relationships between metal concentrations and other sedimentary parameters, such as grain size, organic/inorganic matter properties, and metals, and discussed the sources and diffusion processes of the metals in sediments. In order to indicate the sources in a drainage area and their relationships with the chemical behavior of seawater, it is essential to correlate the metal concentrations, environmental properties, such as bathymetric and topographic parameters and measurement data. Therefore, we determined the spatial variations and corresponding controlling factors of metal concentrations in the sediments of Beppu Bay and correlated them with environmental parameters using statistical analyses.

Beppu Bay is located on the western part of the Seto Inland Sea in southwest Japan (Fig. 1). It is characterized by a shallow bay mouth with a water depth that increases toward the interior of the bay; as a result, it is hydrodynamically stagnant. These features form a strong thermocline and low to zero oxygen concentration at the bottom during the summer to autumn seasons (Shiozawa et al., 1977). Several rivers flow

into the bay, and their drainage areas are used for human activities such as urbanization, industrialization, and tourism. Kuwae et al. (2007) focused on the sediments of Beppu Bay and reported a wide variation in redox conditions in an effort to understand the oxygen depletion process in semi-enclosed bays. In addition, they explained the relationships between the spatial variations in the organic geochemical properties of sediments and environmental variables, which are mainly due to the supply from the rivers and the redox conditions.

This study focused on 14 metals that are sensitive to the redox conditions, geology, and anthropogenic impacts of the watershed area; we investigated the spatial distributions of the concentrations of surface sediments in Beppu Bay. To determine the controlling factors for variations in metal concentrations, we used PCA, RDA, and simple correlation to investigate the relationships between the geochemical properties, measured bottom condition data, and bathymetric parameters.

2. Study area

Beppu Bay is located on the western part of the Seto Inland Sea in southwest Japan (Fig. 1). Its basin has a maximum depth of 72 m in the interior with a sill of 53 m depth at the bay mouth. These bathymetric features have caused the bottom conditions to become strongly stagnant. The tidal current velocity near the bottom is so low that it is undetectable, even using a current meter with a detection limit of 2 cm/s (Hoshika et al., 1978). The surface sediments in the interior of the bay were found to mainly contain silty clay, whereas

those from the area outside the sill mainly contained fine sand sediments (Inouchi, 1990). This hydrodynamic condition is associated with a thermocline that has strong temperature and salinity gradients that form at a water depth of 60 m in the basin from July to November (Shiozawa et al., 1977). Accompanying this process, the dissolved oxygen (DO) of the bottom water varies seasonally. The DO is 6 ml/L from January to March and decreases to almost zero by September; further, hydrogen sulfide has been observed between August and November (Shiozawa et al., 1977; Hoshika et al., 1988; Kameda and Fujiwara, 1995).

The main rivers flowing into the bay are the Oita and Ono rivers. They flow into the southern area of the bay, and have drainage areas of 650 and 1465 km², respectively. These areas account for approximately 70% of the Beppu Bay watershed. Multiple industrial zones containing steel plants and petrochemical complexes are located in the southern coastal area around the mouths of the Oita and Ono rivers, and electronics plants exist in the watershed area of the Ono River. Beppu City, which is located on the western part of the bay, has numerous hot springs.

3. Materials and Methods

3.1. Sampling and analysis

Surface sediments (the uppermost 1 cm) were collected in August 2006 from Beppu Bay at 16 sites

using a Smith-McIntyer grab sampler (Fig. 1; Table 1). Mostly clay-silt grains were observed in all of the samples. At the same time, undisturbed samples collected by a gravity corer were used to measure the temperature and dissolved oxygen (DO) concentrations of the bottom water and the redox potential (Eh) of the upper surface sediments were measured using a DO/Eh meter (D-55, HORIBA, Ltd., Japan).

Sediment samples were dried at 60 °C for 24 h and ground to a fine powder. Approximately 0.2 g of a powdered sample was digested by a microwave system (Ethos D, Milestone S.r.l., Sorisole, BG, Italy) with an acid mixture (HNO₃:HF = 6:1) in a Teflon vial. The digested sample was dried to remove all of the acid. The residue was dissolved with HNO₃ and then diluted with Milli-Q water. The Al, V, Cr, Mn, Fe, Co, Cu, Zn, As, Mo, Ag, Cd, In, and Pb concentrations were determined by inductively coupled plasma-mass spectrometers (ICP-MS; HP-4500, Hewlett-Packard, Avondale, PA, USA and 7500cx, Agilent, Palo Alto, CA, USA). The metal analysis was conducted in duplicate. The analytical quality was assessed using standard reference materials, NIES No. 2 pond sediments, and NIES No. 12 marine sediments (National Institute for Environmental Study, Tsukuba, Japan), and the recovery of metals was 80–110%. In this study, metal concentrations were expressed as µg/g dry wt.

3.2. Data analysis

In order to examine the relationships between the metals concentrations and other factors, we used

ordination techniques. Numerous studies have primarily used two multivariate ordination techniques. One of these consisted of the linear ordination methods such as principal components analysis (PCA) and redundancy analysis (RDA). These analyses were performed to determine the variation in the species data within a narrow range, which could be attributed to linear coupling. Another study used unimodal based methods of correspondence analysis (CA), detrended correspondence analysis (DCA), and canonical correspondence analysis (CCA) to determine the variation in the species data over a wide range. DCA was carried out on the metal data to determine the most appropriate method, with the gradient length as the criterion (ter Braak, 1988). The results of DCA showed that linear methods (PCA and RDA) were preferable for the dataset considered in this study; this was because the gradient length in standard deviation units appeared to be not larger than two by the analysis (Birks, 1995). In order to identify the primary factors influencing the variations in the geochemical parameters, we performed PCA for two cases. One involved analysing the 14 metal concentrations investigated in this study (Table 2). The other involved analyses of the metals and seven organic matter parameters measured by Kuwae et al. (2007) (Fig. 2; Table 1); these include stable isotope ratios of organic carbon ($\delta^{13}\text{C}$) and nitrogen ($\delta^{15}\text{N}$); total organic carbon (TOC), total nitrogen (TN), and total sulfur (TS) content; and ratios of total organic carbon to total nitrogen (C/N) and sulfur (C/S). RDA and a simple correlation analysis were used to examine the relationships between the metal concentrations and the seven environmental variables: water depth; distances from the mouths of Oita, Ono, and Haruki rivers; temperature and DO of the bottom water; and Eh of the uppermost surface sediment, shown in Fig. 2 and Table 1. The

PCA and RDA computations were performed with centered and standardized data using CANOCO for Windows 4.5 (ter Braak and Smilauer, 2002). In the RDA computations, the correlation matrix option was selected, and scaling was conducted on a correlation biplot. The significance of each environmental variable was tested using 499 unrestricted Monte Carlo permutations.

4. Results

4.1. Distribution pattern of metal concentrations

The spatial distributions of the metal concentrations in the surface sediments of Beppu Bay were classified into four patterns (Fig. 2; Table 3). The concentrations of V, Cr, Co, As, and Ag were relatively high on the southern coast (Sites 1–5) and decreased toward the northern part of the bay. The concentration ranges were 62–95, 34–76, 7.7–15.6, 7.2–22.3, and 0.22–0.46 $\mu\text{g/g}$, respectively. The distribution pattern for the Fe concentrations (27 800–39 200 $\mu\text{g/g}$) was similar to these metals, although the value for Site 10 in the northwest was higher than the average for the bay. The indium concentrations were relatively high at $>1.1 \mu\text{g/g}$ at the offshore parts of the Oita and Ono river mouths (Sites 1–3) and $<0.2 \mu\text{g/g}$ at the other sites. In contrast, the distribution patterns for the Al, Zn, and Pb concentrations showed relatively low values on the southern coast and increased toward the north and west. These metals had ranges of 44 100–71 800, 111–144, and 24.7–32.2

$\mu\text{g/g}$, respectively. The Mn concentration was 375–2200 $\mu\text{g/g}$, and its distribution pattern showed increases toward the bay mouth from the southwest, which is where the deepest basin lies in the interior of the bay. In contrast, the distribution patterns for Cu, Mo, and Cd showed increases in the deeper parts from the bay mouth with ranges of 25.9–37.3, 1.1–12.9, and 0.19–0.47 $\mu\text{g/g}$, respectively.

4.2. Principal component analysis of geochemical parameters

The PCA results for the metal concentrations revealed two main axes that explain most of the variations (Fig. 4; Table 3). The first principal component (PC1) accounted for 43% of the variation; when taken together with the second principal component (PC2), this value increased to 71% (Table 3). The loadings of V, Cr, Co, As, and Pb on PC1 were high (0.98, 0.90, 0.95, 0.97, and -0.73, respectively); however, the loadings of Mn, Cu, Mo, Cd, and In were low (-0.08, 0.09, -0.26, -0.06, and 0.44, respectively). In contrast, the loadings of Mn, Cu, Mo, Ag, and Cd on PC2 were high (-0.73, 0.79, 0.83, 0.70, and 0.92, respectively), while the other parameters exhibited low values. Samples from Sites 3–5, which were located near the Oita River mouth on the southern coast of the bay, were characterized by high PC1 and low PC2 values. These samples showed the same trends in the PCA results as the V, As, Cr, Co, and In values. In contrast, samples from Sites 6–8, which were located in the deepest and innermost regions of the bay, were characterized by high PC2 values, and samples from Sites 10 and 13–16, which were located on the northern part of the bay, were characterized by

low PC2 values. The samples from Sites 6–8, which were located in deeper regions, showed the same trends for the Mo, Cd, and Cu values; on the other hand, samples from Sites 10 and 13–16, which were from shallower areas, showed the same trends for the Mn values.

The PCA results for the metals and organic matter parameters revealed two main axes that explained most of the variation (Fig. 5; Table 4). The first principal component (PC1) accounted for 50 % of the variation; when taken together with the second principal component (PC2), this value increased to 77 %. The V, Cr, Co, Zn, As, $\delta^{13}\text{C}$, $\delta^{15}\text{N}$, C/N, TN, TS, and C/S loadings on PC1 were high (0.88, 0.86, 0.94, -0.78, 0.88, -0.89, -0.92, 0.94, -0.74, -0.92, and 0.90, respectively). In contrast, the Mn, Cu, Mo, Ag, Cd, and TOC loadings on PC2 were high (0.69, -0.76, -0.70, -0.88, -0.85, and -0.81, respectively), while the other parameters exhibited low values. Samples from Sites 3–5 were characterized by high PC1 and low PC2 values. These samples showed the same trends for the V, As, Cr, Co, In, and C/N values, which were the opposite to those for $\delta^{13}\text{C}$, $\delta^{15}\text{N}$, and Pb. In contrast, samples from Sites 6–8 were characterized by low PC2 values, and those from Sites 10 and 13–16 were characterized by high PC2 values. The samples from Sites 6–8 showed the same trends for the Mo, Cd, Cu, and TOC values, while the samples from Sites 10 and 13–16 showed the same trends for the Mn values.

4.3. Redundancy and simple correlation analysis of geochemical parameters and environmental variables

The eigenvalues of the first two RDA axes were high (RDA axis 1 (RD1): 0.35 and RDA axis 2 (RD2): 0.27) when compared with the subsequent axes and accounted for 61.8% of the variance in the geochemical data (Fig. 6; Table 5). The correlations between the geochemical data and environmental variables for RD1 and RD2 were high (0.91 and 0.99, respectively). Both of the axes together accounted for 82.6% of the variance in the relation between the metals and seven environment variables. The results of the permutation tests revealed that two environmental variables had statistically significant effects: the water depth ($P = 0.002$) and distance from the Oita River mouth ($P = 0.002$). On the other hand, the results revealed that the following had insignificant effects: the bottom temperature, Eh, DO, and distances from the Ono and Haruki river mouths. The distance from the Oita River mouth showed a significant correlation with RD1 ($r = -0.79$) because the absolute t-value of the regression coefficient was greater than two (ter Braak and Smilauer, 2002) (Table 6). In addition, the depth showed a significant correlation with RD2 ($r = 0.90$, Table 6). The RDA results (Fig. 6) demonstrated a pattern similar to the PCA results (Fig. 4). The trends of the metals and samples along the RDA axes were also similar to those along the PCA axes. This implies that the distribution patterns for the variations in the metals, as revealed in the RDA axes, were reliable. The RDA results revealed two close relationships between the metal concentrations and environmental variables. One was the relationship between the V, As, Cr, Co, In, and Pb values and the distance from the Oita River mouth. The other was the relationship between the Cu, Cd, Mo, and Mn values and the water depth. The trend of the distribution

patterns for the sample scores associated with Sites 2–5 was similar to the arrows in relation to the distance from the Oita River mouth. Therefore, the sample score variations associated with Sites 2–5 were mainly attributed to the variations in the distance from the river mouth. In contrast, the distribution patterns for the sample scores associated with Sites 6, 7, 10, 14, and 16 were parallel to the arrow trends in relation to the water depth. This indicates that these sample score variations can be mainly attributed to the variations in water depth.

The results of the simple correlation analysis showed trends similar to the RDA results (Table 7); however, there were some differences. The V, Cr, Co, As, and Pb concentrations were correlated with the distances from the Oita River, while In was correlated with the distances from both the Oita and Ono rivers. These results indicated that the controlling factors for the In concentrations in the sediments were closely related to both of these rivers.

5. Discussion

5.1. Influences of supply from the drainage area

The PCA results for metal concentrations demonstrated that the V, Co, Cr, As, and Pb concentrations were affected by common factors (Fig. 4; Table 3). The other PCA results for metals and organic geochemical parameters showed that these metal concentrations were closely related to C/N, $\delta^{13}\text{C}$, and $\delta^{15}\text{N}$, which are

indicators of organic matter sources in coastal sediments (Fig. 4; Table 4). The C/N, $\delta^{13}\text{C}$, and $\delta^{15}\text{N}$ values for surface sediments in Beppu Bay were closely related to the distance between the Oita River mouth and the sampling sites (Kuwae et al., 2007). By the same token, the RDA results suggested that the spatial variations for these metal concentrations were controlled by the distances from the sampling sites to the Oita River mouth (Fig. 6; Table 5).

The V, Cr, Co, and As concentrations were relatively high around the mouths of the Oita and Ono rivers on the southern coast (Fig. 3); according to the PCA and RDA results (Tables 4 and 6), they had positive relations with C/N and their distances from the Oita River mouth and negative relations with $\delta^{13}\text{C}$ and $\delta^{15}\text{N}$. These relationships indicate that these metals originated in the drainage area for the Oita River in the same manner as terrestrial organic matter. The V, Cr Co, and As concentrations for the surface sediments in Beppu Bay ranged between several-fold greater and one-third of the global mean values for the crust (Bowen, 1979) and background values of the fluvial sediments in the Oita River (Imai et al., 2004) (Table 2). Previous studies have explained that the V, Cr, Co, and As sources are closely related to industry (e.g., Pekey et al., 2006; García et al., 2008); however, this is not very likely for Beppu Bay. Therefore, these metals likely originated from clastic fractions in the drainage area of the Oita River.

The RDA and simple correlation analysis results suggested that In was supplied from both the Oita and Ono rivers (Fig. 6; Table 7). The In concentration in Beppu Bay was very high, over twenty times the crustal value (Table 2); this result implies the influence of special accumulation processes. Previous studies have not

focused on variations in the In concentrations in sediments, and the geochemical behavior of In is not well understood for coastal estuarine systems. In is used industrially as indium tin oxide alloys for manufacturing flat panel displays and semiconductors for high technology (Roskill Information Services Ltd., 1996). The drainage areas for the Oita and Ono rivers have plants producing electronic devices and accurate instruments; therefore, these plants may be the In sources.

The lead concentrations in the surface sediments were low around the Oita River mouth (Fig. 3) and had trends that were opposite to those exhibited by the V, Cr, Co, As, and In concentrations in the PCA and RDA results (Figs. 4 and 6). These results suggest that the deposition processes for Pb were likely associated with marine plankton and/or supply from drainage areas of the bay excluding the Oita River. Many studies have described increases in Pb concentrations in coastal sediments as caused by particulates produced during the burning of coal and oil fuel (e.g., Gracia et al., 2008). Lead products exhausted from human activities in the surrounding bay area may have diffused through the atmosphere toward the sea, and the Pb concentrations in the surface sediments may have been diluted by clastic sediments supplied from the Oita and Ono rivers. Therefore, these statistical results may show the relationship between the Pb concentrations and the distance from the Oita River.

The RDA results showed that the Al, Fe, Zn, and Ag concentrations were weakly correlated with the environmental parameters used in this study (Fig. 6). These results suggest that variations in these metal concentrations were controlled by other factors such as parameters not considered in this study and/or multiple

factors. In order to explain the depositional processes of these metals, we considered the possibilities of relation with other factors and sources.

In general, the metal concentrations of sediments vary with grain size (e.g., Imai et al., 1997; Lin et al., 2002; Neto et al., 2006; Ohta et al., 2007). Aluminum is a structural element of clay and its concentration is relatively constant in the crust (Schropp et al., 1990; Summers et al., 1996). Although the median diameters of the sediments in the Beppu Bay interior were over 6ϕ , the mud content (over 4ϕ) slightly decreased to 85% around the Oita and Ono river mouths from more than 90% in the main part of the bay (Inouchi, 1990). This pattern reflects the deposition process for coarser sediments from the Oita and Ono river drainage areas. To explain the variation in grain size, a trend of decreasing Al concentration may accompany a decrease in mud content.

The Fe concentrations showed middle negative values in RD1 and positive values in RD2 and negative relations with the distances from the Oita River mouth and the water depth (Fig. 6; Table 6). This result implies that the spatial distribution of Fe concentration in the surface sediments was influenced by the following two topographic parameters: supply from the Oita River, as with the V, Cr, Co, and As concentrations, and the redox conditions. Although we explain the relationships between the metal concentrations and redox conditions in the next section, Shiozawa et al. (1977) demonstrated that Fe dissolves from sediments in anoxic conditions during the summer season; they used vertical profiles of seawater from the deepest part of the bay for dissolved and particulate metals. However, no data are available that show the diffusion process in the horizontal direction after materials are dissolved from sediments. Although it is currently difficult to explain

the relationship between the Fe concentrations and redox conditions; if a transfer process for dissolved Fe in seawater can be demonstrated, the reason that the Fe concentrations in the surface sediments decrease toward the deeper part of the bay will be elucidated.

Zinc concentrations increased toward the western part of the bay (Fig. 3). RDA results indicated that the distance from the Ono River was an insignificant factor in the variation of the metal concentrations. However, the same trend was observed for Zn concentration and the distance from Ono River shown in Fig. 6. A geochemical map of Japan produced by Imai et al. (2004) demonstrated that the Zn concentrations in the western part of the bay, including Beppu City, were much higher than in the southern part, which is where the Ono River flows. Osawa et al. (2007) showed that the Zn concentrations in the rivers flowing through Beppu City, including the Haruki River, were very high and explained this phenomenon as a result of the discharge from hot springs. Statistical results did not show a relationship between Zn and the distance from the Haruki River in Beppu City, although the RDA results indicated a relationship with the Ono River. To summarize these results, the Zn source in Beppu Bay may be the discharge from hot springs in the western part of the bay, with the Zn concentrations in the surface sediments diluted with clastic sediments supplied from the Ono River containing little Zn.

The PCA results showed that Ag also had the highest loading values in PC2, with trends similar to Mo, Cd, and Cu (Figs. 4 and 5; Tables 3 and 4). However, these distribution patterns showed a small difference. The RDA results showed that the trend for Ag was in the middle point between the water depth and opposite

trend in the distance from the Oita River (Fig. 6). The simple correlation results showed that the Ag concentration was related to these topographical parameters. These results suggested that both factors affected the spatial variation of the Ag concentration. In general, most of the Ag in the coastal sediments was from municipal and industrial waste water discharges (e.g., Flegal et al., 1995; Macdonald et al., 2008). In the same way, Ag was likely supplied from rivers flowing near industrial plants located in the southern coastal area of Beppu Bay.

In order to explain the sources of metals, it is necessary to discuss, not only river pathways, but also wind transport. In the case of Beppu Bay, eolian dust might contain crustics, volcanoclastic material distributed around Mt. Aso in the southwest of the bay and anthropogenic materials like Pb, as described above. This study focused on surface sediment deposition processes and chemical behaviors of seawater. In addition, the supplied amount from wind transport is less than those from rivers in Beppu Bay. Therefore, it is difficult when considering bulk element concentrations to separate the supply from rivers and the atmosphere. A different approach such as one involving element isotopes could resolve this problem more comprehensively.

5.2. Relationships with redox condition

The RDA and simple correlation results revealed that the spatial variations in the Mn, Cu, Mo, and Cd concentrations were closely related to the water depth (Fig. 6; Table 6). Kuwae et al. (2007) demonstrated

that the water depth controlled the temperature and/or redox conditions of the seafloor, and that TOC, TN, TS, and C/S were sensitive to these variations in Beppu Bay. Thus, the spatial variations in these metal concentrations are probably related to the redox conditions. However, the RDA results showed non-significant relationships between these metal concentrations and the Eh values of the surface sediment and DO of the water at the bottom. It is highly possible that the causes for these results are related to measurement errors and differences in the time scales for the records of the sediment and water. The Eh values around the boundary area between the sediments and seawater varied rapidly; therefore, it was difficult to standardize the measurements, and the measurement error was large. In addition, the DO and Eh values showed momentary records. When considering the sedimentation rates, which were calculated as 0.20–0.27 g/cm²/yr by Hoshika et al. (1988) for Beppu Bay, the parameters of the surface sediments in the uppermost 1 cm were averages for at least several years and reflected the variation in redox conditions for a longer time than the seasonal variations in the seawater. As a result, the RDA permutation test may not have registered dominant factors such as the DO and Eh. However, Shiozawa et al. (1977) clearly demonstrated that the water depth in Beppu Bay influences the vertical and seasonal variations in DO and Eh in the seawater; the long-term variation in the redox conditions may be closely related to the water depth rather than to DO and Eh.

The PCA results showed the same trends for the Mo, Cd, and Cu concentrations (Figs. 4 and 5) and the RDA results showed that these parameters and the water depth had similar trends (Fig. 6). These results

indicate that the concentrations of these metals in the surface sediments reflect the average redox conditions over a few years. The Mo and Cd concentrations in Beppu Bay were relatively high at the southwestern deep end with anoxic to euxinic conditions (Fig. 3). Thus, the Mo and Cd had high depositions under anoxic conditions in the deep parts of the bay. Our results were consistent with previous studies that focused on the metal concentrations in surface sediments, which revealed that Mo and Cd were abundant in suboxic to euxinic anoxic sediments (Emerson and Husted, 1991; Calvert and Pedersen, 1993).

Copper is essential for biological processes and shows a high affinity for humic substances, which represent a major component of organic matter in sediments (Calvert et al., 1985). The PCA results for the metals and organic geochemical properties showed that TOC, which indicates the deposition quantity of organic matter, had the same trend as Cu, Mo, and Cd. Kuwae et al. (2007) suggested that high depositions of organic matter occurred in the deeper part of Beppu Bay under anoxic conditions. As a result, Cu accumulated with the organic matter and its concentration is indirectly controlled by the variation in the redox conditions.

The trend for Mn was the opposite to that for Mo and Cd, and the RDA results showed a negative correlation between the Mn concentrations and water depth. This suggested that oxic-anoxic and redox conditions also influenced the spatial variations in the Mn concentrations for the surface sediments of Beppu Bay. Manganese diffuses from sediments under anoxic conditions and is deposited by oxidation in oxic conditions (Calvert and Pederson, 1993). Hoshika et al. (1988) investigated the vertical variations in the Mn concentrations in two core sediments collected under anoxic conditions from the interior part of the bay and oxic

conditions from the bay mouth. These results explained the increases in Mn concentrations for sediments less than 2 cm below the surface in the bay mouth; they were observed to occur through post-depositional mobilization under reducing conditions in the deeper sediments before subsequent precipitation in the oxygenated surficial sediments. As a result, diagenetic behavior responded to redox conditions, which controlled the spatial variation of the Mn concentrations in Beppu Bay.

Table 8 shows the results of a comparison of the concentrations of Mo, Cd, Cu, and Mn, which were closely related with redox conditions, in 5 restricted sea areas along the coast. Manganese, Cu, and Mo concentrations in Beppu Bay were in the same range as other areas. While, the Cd concentrations of Beppu Bay were much lower than those in other areas. Although our data could not indicate the reason for these results, perhaps differences in the water quality related elemental behavior or the amounts supplied from surrounding areas are contributing factors. To determine the exact cause, it will be necessary to compare the environmental characteristics of these areas in detail.

6. Conclusion

In this paper, we compared environmental parameters such as water depth, distances from river mouths, and measured data used in PCA and RDA to determine the supply sources of 14 metals in the surface sediments of Beppu Bay and elucidated the relationships between their concentrations and redox conditions. The

statistical results demonstrated that the spatial variations of the 14 metal concentrations of the surface sediments in Beppu Bay were mainly controlled by two factors. One factor was the distance from the mouth of the Oita River; this factor was significant for the V, Cr, Co, and As concentrations. This relationship indicated that these metals were mainly supplied from the drainage area of the Oita River. The supply source for In is also the drainage areas of the Oita and Ono rivers, which empty into Beppu Bay. The Mn, Cu, Mo, and Cd concentrations were closely related to the redox condition parameters, water depth, and the DO and Eh in the bottom water. The concentrations of these metals were controlled by the oxic-anoxic and redox conditions at the bottom. Molybdenum and Cd were found to accumulate in the deeper part under anoxic conditions; in contrast, the Mn concentration increased toward the bay mouth, which was oxic. Copper concentrations were found to increase in the anoxic areas, where organic matter such as humic substances may have been prevented from decomposing. Silver and Pb likely originated from anthropogenic discharges of industrial plants in the southern part of the bay and the burning of fossil fuels over the whole watershed area, respectively. The variations in the Al, Fe, and Zn concentrations were controlled by other factors not considered in this study and/or other multiple factors.

Reference

Adelson, J. M., Heltz, G. R., Miller, C. V., 2001. Reconstructing the rise of recent coastal anoxic; molybdenum in Chesapeake Bay sediments. *Geochemica et Cosmochimica Acta* 65,

Birks, H. J. B., 1995. Quantitative paleoenvironmental reconstructions. in: Maddy, D., Brew, J. S.(Eds.), *Statistical Modelling of Quaternary Science Data. Technical Guide*, 5. Quaternary Research Association, Cambridge, pp. 161-254.

Bowen, H. J. M., 1978. *Environmental Chemistry of the Elements*. Academic Press, London.

ter Braak, C. F. J., 1988. CANOCO-a FORTRAN program for canonical community ordination by (oartial)(detrended)(canonical)correspondence analysis, principle components analysis and redundancy analysis (version 2.1). Technical Report LWA-88-02, GLW, Wageningen, pp 95.

ter Braak, C. F. J., Smilauer, P., 2002. *CANOCO Reference Manual and Cano-Draw for Windows User's Guide: Software for Canonical Community Ordination (Version 4.5)*.

Microcomputer Power, New York. Caccia, G. V., Millero J. F., Palanques, A., 2003. The distribution of trace metals in Florida Bay sediments. *Marine Pollution Bulletin* 46, 1420-1433.

Caccia, G. V., Millero J. F., Palanques, A., 2003, The distribution of trace metals in Florida Bay sediments. *Marine Pollution Bulletin* 46, 1420-1433.

Calvert, S. E., Mukherjee, S., Morris, R. J., 1985. Trace metals in fulvic and humic acids from modern organic-rich sediments, *Oceanologica acta* 8, 167-173.

Calvert, S. E., Pedersen, T. F., 1993. Geochemistry of recent oxic and anoxic marine sediments: implications for the geological record. *Marine Geology* 113, 67-88.

Emerson, S., Husted, S., 1991. Ocean anoxia and the concentrations of molybdenum and vanadium in seawater. *Marine Chemistry* 34, 177-196.

Ergin, M., Saydam, C., Baştürk, Ö., Erdem, E., Yörük, R., 1991. Heavy metal concentrations in surface sediments from the two coastal inlets (Golden Horn Estuary and İzmit Bay) of the northeastern Sea of Marmara. *Chemical Geology* 91, 269-285.

Flegal, A. R., Sanudo-Whilhelmy, S. A., Scelfo, G. M., 1995. Silver in the eastern Atlantic Ocean. *Marine Chemistry* 49(4), 315-320.

Francois, R., 1988. A study on the regulation of the concentrations of some trace metals (Rb, Sr, Zn, Pb, Cu, V, Cr, Ni, Mn and Mo) in Saanich Inlet sediments, British Columbia, Canada. *Marine Geology* 83, 285-308.

García, E. M., Cruz-Motta, J. J., Farina, O., Bastidas, C., 2008. Anthropogenic influences on heavy metals across marine habitats in the western coast of Venezuela. *Continental Shelf Research* 28, 2757-2766.

Hoshika, A., Shiozawa, T., Kitano, Y., 1988. Manganese, Iron, Copper, and Zinc in Sediment Cores from Seasonally Stratified Beppu Bay, the Seto Inland Sea, Japan., in: Wolf, D. A., O'Connor, T. P.(Eds), *Oceanic Processes In Marine Pollution*. Robert E. Krieger Publishing

Hoshika, A., Takimura, O., Shiozawa, T., 1978. Vertical distribution of particulate manganese and iron in the Beppu Bay. *Journal of the Oceanographical Society of Japan* 34, 261-264.

Hyun, S., Lee, C. H., Lee, T., Choi, J. W., 2007. Anthropogenic contributions of heavy metal distributions in the surface sediments of Masan Bay, Korea. *Marine Pollution Bulletin* 54, 1031-1071.

Imai, N., Terashima, S., Katayama, H., Nakajima, T., Ikehara, K., Taniguchi, M., 1997. Geochemical behavior of heavy metal in coastal marine sediments from the eastern margin of the Japan Sea. *Bulletin of Geological Survey of Japan* 48, 511-529. (In Japanese with English abstract)

Imai, N., Terashima, S., Ohta, A., Mikoshiba, M., Okai, T., Tachibana, Y., Togashi, S., Matsuhisa, Y., Kanai, Y., Kamioka, H., 2004. Geochemical map of Japan. Geological Survey of Japan, Tsukuba. (in Japanese with English abstract)

Inouchi, Y., 1990. Origin of sand and its distribution pattern in the Seto Inland Sea, Southwest Japan. *Bulletin of the Geological Survey of Japan* 41, 49-86.

Kameda, T., Fujiwara, T., 1995. Ventilation time and anoxia of the benthic cold water in Beppu Bay. *Bulletin of Coastal Oceanography* 33, 59-68. (In Japanese with English abstract)

Kuwae, M., Yamaguchi, H., Tsugeki, K., Nishimura, M., Miyasaka, H., Fukumori, K., Ikehara, M., Genkai-Kato, M., Omori, K., Sugimoto, T., Ishida, S., Takeoka, H., 2007. Spatial distribution of organic and sulfur geochemical parameters of oxic to anoxic surface sediments in Beppu Bay in southwest Japan. *Estuarine Coastal and Shelf Science* 72, 348-358.

Lin, S., Hsieh, I. J., Huang, K. M., Wang, C. H., 2002. Influence of the Yangtze River and grain size on the spatial variation of heavy metals and organic carbon in the East China Sea continental shelf sediments. *Chemical Geology* 182, 377-394.

Macdonald, R. W., Johannessen, S. C., Gobeil, C., Wright, C., Burd, B., van Roodselaar, A., Pedersen, T. F., 2008. Sediment redox tracers in Strait of Georgia sediments – Can they inform us of the loadings of organic carbon from municipal wastewater?, *Marine Environmental Research* 66, S87-S100.

Neto, J. A. B., Gingele, F. X., Leipe, T., Brehme, I., 2006. Spatial distribution of heavy metals in surface sediments from Guanabara Bay: Rio de Janeiro, Brazil. *Environmental Geology* 49, 1051-1063.

Ohta, A., Imai, N., Terashima S., Tachibana, Y., Ikehara, K., Okai, T., Ujiie-Mikoshihara, M., Kubota, R., 2007. Elemental distribution of coastal sea and stream sediments in the island-arc region of Japan and mass transfer processes from terrestrial to marine environments. *Applied Geochemistry* 22, 2872-2891.

Osawa, S., Yamazaki, H., Takamatsu, N., Yamada, M., Amita, K., Kato, N., 2007. Discharge of useful metal elements from the spring to the river. Report of hot spring research in Oita Prefecture 58, 21-30. (In Japanese)

Pekey, H., 2006. The distribution and sources of heavy metals in Izmit Bay surface sediments affected by a polluted stream. *Marine Pollution Bulletin* 52, 1197-1208.

Reid, M. K., Spencer, K.L., 2009. Use of principal components analysis (PCA) on estuarine sediment datasets: The effect of data pre-treatment. *Environmental Pollution* 157, 2275-2281.

Roskill Information Services Ltd., 1996. *The Economic of Indium*, 6th ed.

Rubio, B., Nombela, M. A., Vilas, F., 2002. Geochemistry of Major and Trace Elements in Sediments of Ria de Vigo (NW Spain): an Assessment of Metal Pollution, *Marine Pollution Bulletin* 40, 968-980.

Russell, A. D., Morford, J. L., 2001. The behavior of redox-sensitive metals across a laminated-massive-laminated transition in Saanich Inlet, British Columbia. *Marine Geology* 174, 341-354.

Schropp, S. J., Lewis, F. G., Windom, H. L., Ryna, J. D., Calder, F. D., Burney, L. C., 1990. Interpretation of metal concentrations in estuarine sediments of Florida using aluminum as a reference element. *Estuaries* 22, 227-235.

Shiozawa, T., Kawana, K., Hoshika, A., Tanimura, T., Takimura, O., 1977. Vertical

distribution of heavy metals and its seasonal variations in Beppu Bay. Journal of the Oceanographical Society of Japan 33, 350-356. (in Japanese with English abstract)

Summers, J. K., Wade, T. L., Engle, V. D., Malaeb, Z. A., 1996. Normalization of metal concentrations in estuarine sediments from the Gulf of Mexico. Estuaries 19, 581-594.

ACCEPTED MANUSCRIPT

Table 1
 Sampling location and organic geochemical properties of samples.

Site No.	Location	Water depth (m)	The distance from the river mouth (km)			Bottom water		Eh in the uppermost surface sediment (mV)	Organic geochemical properties (Kuwae et al., 2006)						
			Oita R.	Ono R.	Haruki R.	Temp. (°C)	DO (mg/L)		$\delta^{13}\text{C}$ (‰)	$\delta^{15}\text{N}$ (‰)	C/N	TOC (%)	IN (%)	TS (%)	C/S
1	33 17.50 N, 131 40.08E	53.1	5.3	4.0	14.8	17.64	ND	-156	-22.7	5.4	9.6	2.6	0.28	0.68	3.8
2	33 17.38N, 131 37.99E	55.9	3.7	6.7	11.9	13.54	0.21	-53	-22.5	5.3	9.5	2.6	0.28	0.76	3.4
3	33 16.45N, 131 37.34E	50.7	1.7	7.5	11.2	17.02	0.01	-160	-24.7	3.6	11.3	2.5	0.22	0.62	4.0
4	33 16.20N, 131 35.98E	56.8	2.6	9.5	9.5	15.45	ND	-120	-23.4	4.9	10.0	2.5	0.26	0.64	3.9
5	33 16.01N, 131 35.03	59.9	3.9	11.2	8.2	ND	0.29	-111	-24.5	4.1	10.7	2.4	0.22	0.54	4.4
6	33 16.02N, 131 34.35E	67.2	5.4	12.5	7.1	11.47	0.20	-195	-22.1	5.9	8.6	2.8	0.31	1.33	2.1
7	33 16.02N, 131 32.97E	69.7	7.0	14.2	5.9	11.36	0.56	-321	-21.8	6.1	8.0	2.9	0.34	1.36	2.2
8	33 16.48N, 131 32.32E	72.3	8.3	15.2	4.3	11.36	0.24	-363	-21.7	6.3	7.7	2.9	0.35	1.25	2.3
9	33 18.48N, 131 32.37E	57.0	9.5	15.6	3.1	13.85	0.50	-341	-21.2	6.4	8.0	2.7	0.33	0.97	2.8
10	33 19.33N, 131 33.97E	45.9	8.9	13.9	6.0	ND	0.90	ND	-21.3	6.1	8.4	2.3	0.28	0.68	3.4
11	33 17.48N, 131 34.04E	57.6	6.5	12.8	5.7	12.71	2.32	-301	-21.4	6.4	8.5	2.6	0.31	0.90	2.9
12	33 17.51N, 131 35.99E	54.0	4.3	9.8	8.7	13.27	1.52	-68	-21.7	6.0	8.5	2.7	0.32	0.84	3.2
13	33 19.32N, 131 36.07E	34.8	7.4	11.2	8.8	25.13	1.40	-100	-21.5	6.1	8.2	2.2	0.28	0.70	3.2
14	33 19.33N, 131 38.03E	44.6	7.1	8.7	11.9	19.96	3.23	-264	-21.5	6.1	8.4	2.4	0.29	0.68	3.6
15	33 19.33N, 131 39.97E	39.0	8.0	6.7	14.9	20.58	4.15	90	-21.8	5.7	8.2	2.3	0.29	0.66	3.5
16	33 20.35N, 131 39.35E	21.0	10.3	9.8	14.7	21.46	2.63	77	-21.7	6.0	9.1	1.8	0.23	0.51	3.6

Table 2
 Summary of metal concentrations in surface sediment of Beppu Bay. The values of average crust were referred by Bowen (1978) ; sediments of Oita River by Imai et al., (2004)

Site No.	Concentrations of heavy metals ($\mu\text{g/g}$ dry)													
	Al	V	Cr	Mn	Fe	Co	Cu	Zn	As	Mo	Ag	Cd	In	Pb
1	54000	78	41	571	33700	10.3	37.2	130	15.0	1.4	0.33	0.26	1.16	29.0
2	61400	72	39	533	33400	9.6	34.6	133	12.1	1.4	0.35	0.27	1.14	29.3
3	66400	87	54	574	39200	12.7	32.1	118	18.4	1.7	0.46	0.28	1.57	25.4
4	44100	83	52	684	30900	12.3	34.7	123	16.7	3.1	0.43	0.33	0.11	26.5
5	46100	95	76	924	36900	15.6	33.3	111	22.3	2.2	0.38	0.32	0.09	24.7
6	56900	70	40	427	29100	9.0	35.8	136	10.9	10.4	0.41	0.41	0.10	28.7
7	56500	66	36	382	27800	8.2	35.5	134	9.9	10.0	0.35	0.47	0.09	27.1
8	64300	63	34	375	29100	7.7	35.9	133	8.6	12.9	0.38	0.46	0.08	28.2
9	61300	62	38	460	29400	9.0	34.2	140	8.6	2.7	0.28	0.36	0.13	30.1
10	68500	63	41	853	34700	9.4	30.8	129	7.2	1.6	0.22	0.19	0.09	29.2
11	62500	70	44	511	35000	9.9	37.3	144	8.9	2.5	0.30	0.28	0.10	32.2
12	70300	65	39	484	34600	9.1	34.6	142	11.5	2.7	0.30	0.29	0.13	27.0
13	61300	63	40	1470	31500	9.2	28.6	120	7.9	1.7	0.24	0.19	0.10	28.8
14	64400	64	42	2200	31400	9.4	31.3	127	8.8	1.3	0.24	0.26	0.15	29.0
15	64500	65	44	1470	33400	9.7	31.8	126	9.5	1.1	0.24	0.24	0.11	31.0
16	71800	66	40	902	30300	9.8	25.9	121	10.0	1.1	0.22	0.22	0.09	29.9
average crust	82000	160	100	950	41000	20	50	75	1.5	1.5	0.07	0.11	0.05	14
Sediments of Oita R.	ND	251	47	ND	ND	25	54	133	9	2	ND	0.17	ND	20.7

Table 3
Results of PCA applied to 14 metals concentrations.

	PC1	PC2	PC3	PC4
Eigenvalues	0.43	0.28	0.12	0.07
Al	-0.59	-0.41	0.37	-0.44
V	0.98	0.11	0.06	0.08
Cr	0.90	-0.17	-0.20	0.20
Mn	-0.08	-0.73	-0.41	0.08
Fe	0.63	-0.41	0.52	0.04
Co	0.95	-0.20	-0.09	0.15
Cu	0.09	0.79	0.34	0.43
Zn	-0.65	0.47	0.42	0.32
As	0.97	0.10	0.02	-0.02
Mo	-0.26	0.83	-0.29	-0.26
Ag	0.62	0.70	0.12	-0.19
Cd	-0.06	0.92	-0.25	-0.10
In	0.44	-0.03	0.72	-0.33
Pb	-0.73	-0.25	0.24	0.42

Table 4
Results of PCA applied to metals and organic geochemical properties.

	PC1	PC2	PC3	PC4
Eigenvalues	0.50	0.27	0.09	0.05
Al	-0.45	0.33	0.62	-0.41
V	0.88	-0.44	-0.02	0.16
Cr	0.86	-0.16	-0.25	0.13
Mn	0.14	0.69	-0.34	-0.18
Fe	0.65	0.34	0.54	-0.11
Co	0.94	-0.14	-0.15	0.17
Cu	-0.23	-0.76	0.29	0.43
Zn	-0.78	-0.20	0.40	0.35
As	0.88	-0.44	-0.04	0.09
Mo	-0.53	-0.70	-0.26	-0.29
Ag	0.36	-0.88	0.11	-0.10
Cd	-0.38	-0.85	-0.25	-0.10
In	0.47	-0.17	0.72	-0.15
Pb	-0.59	0.51	0.18	0.44
$\delta^{13}\text{C}$	-0.89	0.44	-0.04	0.10
$\delta^{15}\text{N}$	-0.92	0.30	-0.12	0.16
C/N	0.94	-0.21	0.18	0.01
TOC	-0.47	-0.81	0.18	-0.02
TN	-0.74	-0.63	-0.06	-0.13
TS	-0.92	-0.26	0.07	0.01
C/S	0.90	0.34	0.04	0.11

Table 5
The results of RDA for 14 metals and 7 environmental parameters.

	RD1	RD2	RD3	RD4
Eigenvalues	0.35	0.27	0.07	0.04
geochemical data-environment correlations	0.91	0.99	0.83	0.88
Cumulative percentage variance of species data	35.0	61.8	68.8	72.4
Cumulative percentage variance of geochemical data-environment relation	46.7	82.6	92	96.9

Table 6
 Inter-set correlations of the environmental variables with the axes (A) and t-values of regression coefficients (B). Data are assumed to be statistically significant when the absolute t-values is higher than two (ter Braak and Smilauer, 2002).

	RD1	RD2	RD3	RD4
(A) Inter-set correlations				
Water depth	0.17	0.90	-0.20	-0.24
Bottom temperature	-0.28	-0.29	-0.04	0.56
Eh	0.12	-0.67	0.14	0.11
DO	-0.40	-0.61	0.05	-0.22
Oita R.	-0.79	-0.18	0.22	-0.03
Ono R.	-0.38	0.44	0.31	-0.41
Haruki R.	0.21	-0.57	-0.05	0.43
(B) t-values of regression coefficients				
Water depth	-1.8	9.4	-0.3	0.1
Bottom temperature	-2.4	4.6	0.0	2.4
Eh	-1.6	1.8	-0.2	0.0
DO	-1.0	-2.8	-0.7	-3.8
Oita R.	-3.7	0.5	-2.1	1.2
Ono R.	1.1	3.6	3.9	0.2
Haruki R.	1.6	3.1	3.2	0.9

Table 7 The results of simple correlation between metals concentrations and environmental parameters.

	Water depth	The distance from the river mouth			Bottom water		Eh in the uppermost surface sediment
		Oita R.	Ono R.	Haruki R.	Temp.	DO	
Al	-0.46	0.48	0.06	0.10	0.23	0.43	0.17
V	0.21	-0.77**	-0.38	0.21	-0.06	-0.32	0.15
Cr	0.02	-0.53*	-0.20	0.12	0.26	-0.09	0.21
Mn	-0.60*	0.23	-0.30	0.44	0.76**	0.69**	0.28
Fe	-0.17	-0.53*	-0.45	0.28	0.22	0.07	0.32
Co	-0.05	-0.60*	-0.32	0.23	0.29	-0.09	0.28
Cu	0.87**	-0.40	0.09	-0.38	-0.81**	-0.42	-0.57*
Zn	0.43	0.21	0.35	-0.46	-0.76**	-0.08	-0.45
As	0.16	-0.75**	-0.42	0.27	-0.02	-0.30	0.23
Mo	0.72**	0.10	0.57*	-0.55*	-0.65*	-0.49	-0.56*
Ag	0.68**	-0.76**	-0.03	-0.19	-0.57*	-0.65	-0.30
Cd	0.83**	-0.07	0.51*	-0.56*	-0.81**	-0.51*	-0.67**
In	0.01	-0.56*	-0.64**	0.43	0.06	-0.24	0.11
Pb	-0.32	0.63*	0.05	0.06	0.13	0.52	0.02

*p < 0.05 **p < 0.01

Table 8
Results of comparing with concentrations of Mn, Cu, Mo and Cd in 5 restricted areas.

Area (reference)	Mn	Cu	Mo	Cd
Beppu Bay (This study)	375 -2200	25.9-37.3	1.1-12.9	0.19-0.47
Saanich Inlet (Francois, 1988) ¹	ND	30-50	0-80	ND
(Russel and Morford, 2001) ²	1040 -1640	ND	26.7-53.3	0.91-4.76
Chesapeake bay (Adelson et al., 2001) ³	ND	11.6-40	0.9-3.6	ND
Masan Bay (Hyun et al., 2007) ⁴	ND	13.50 -90.69	0.0-10.5	0.10-7.47
Strait of Georgia (Macdonald et al., 2008) ⁵	450 -1500	ND	0.1-0.4	1-5

¹; Ranges of 55 surface sediment samples.

²; Ranges in 0-5.4 cm of one core.

³; Ranges in 0-25 cm of three cores.

⁴; Ranges in 56 surface sediment samples.

⁵; Ranges of the uppermost values of seven cores.

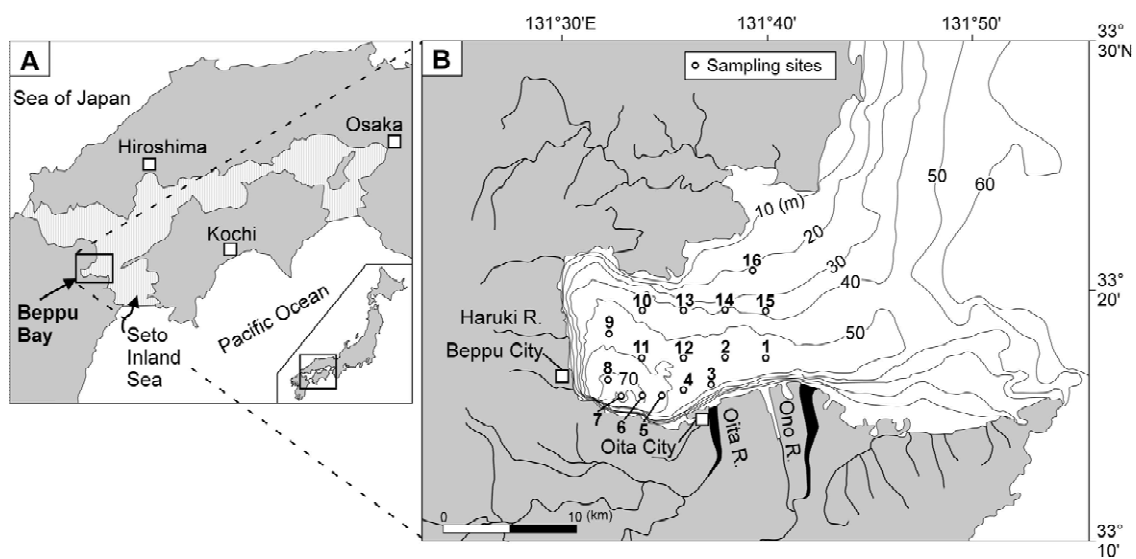


Fig. 1 Study area and sampling sites in Beppu bay, southwest Japan. Contour lines of water depth are an interval of 10 m.

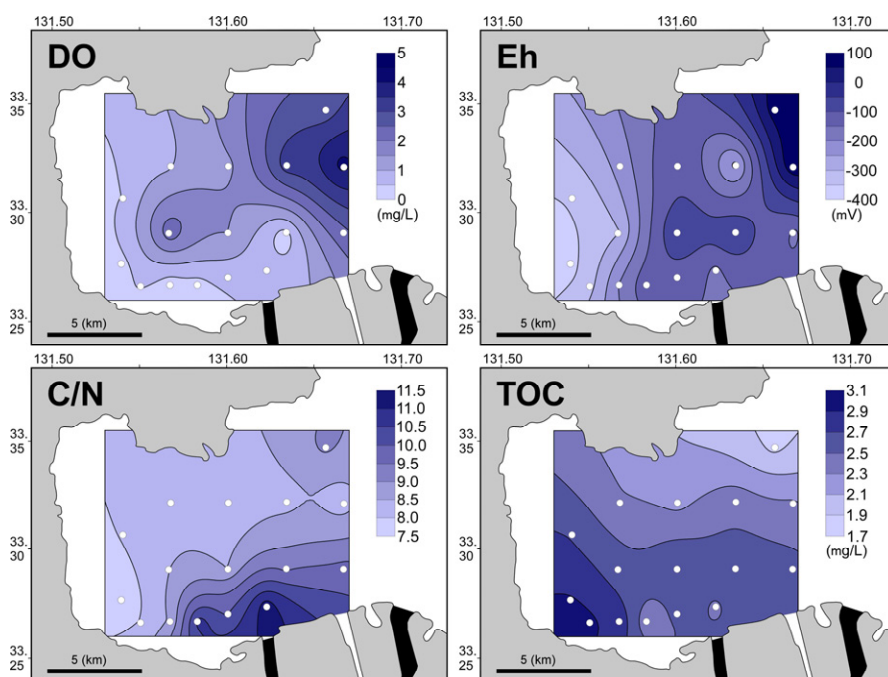


Fig. 2 Distribution map of measured data and organic matter parameters. Open circles in the map show the sampling sites. DO denote the dissolved oxygen concentrations; Eh, the redox potential; C/N, the ratio of total organic carbon to total nitrogen; TOC, total organic carbon

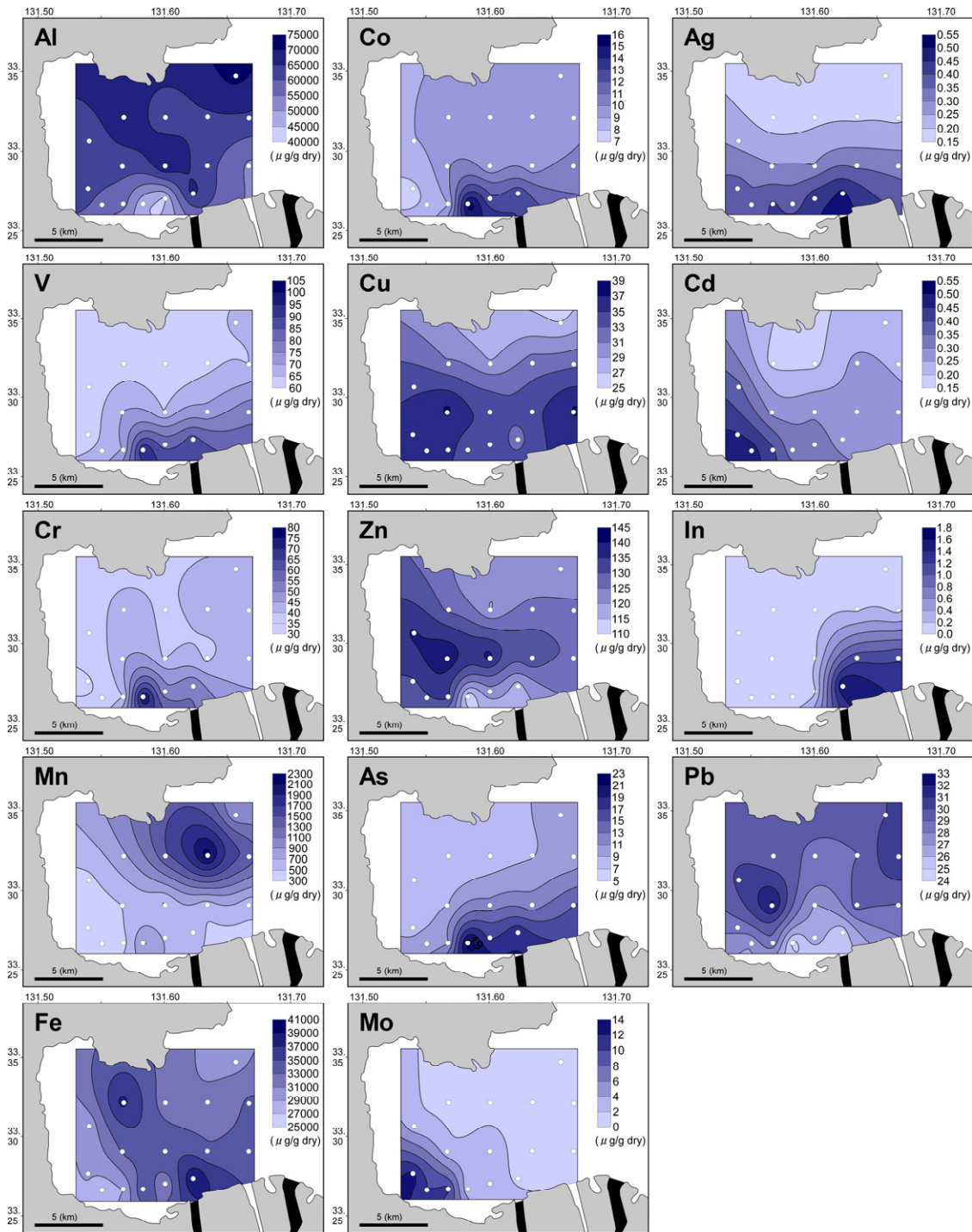


Fig. 3 Distribution maps of 14 metal concentrations. Open circles in the map show the sampling sites.

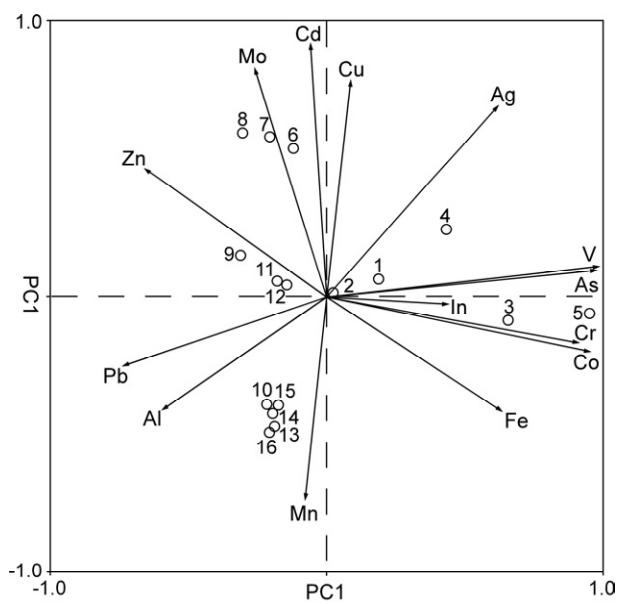


Fig. 4 Result of principal component analysis (PCA) of 14 metal parameters from surface sediments in Beppu Bay.

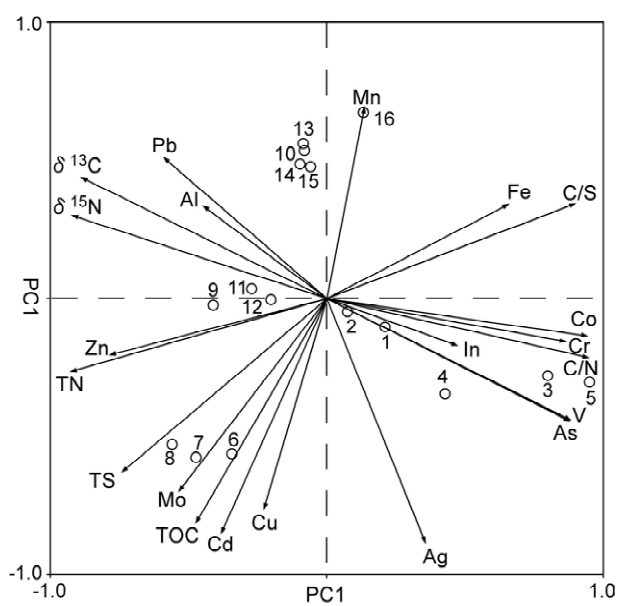


Fig. 5 Result of principal component analysis (PCA) of metal and organic matter parameters from surface sediments in Beppu Bay.

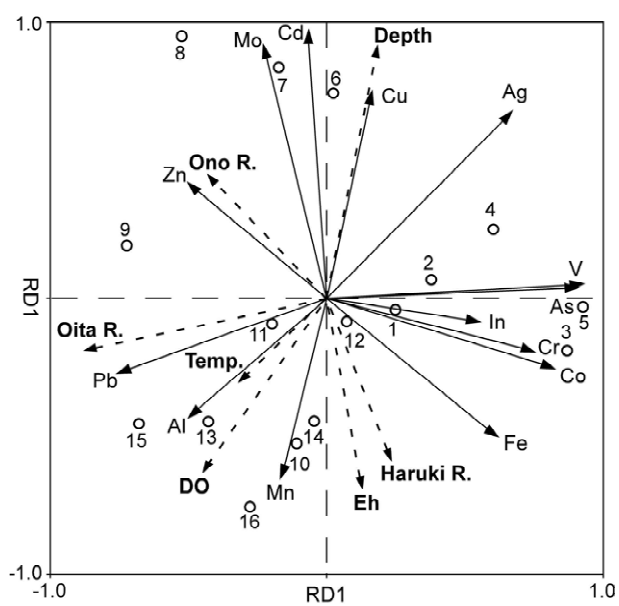


Fig. 6 Result of redundancy analysis (RDA) between metal concentrations and environmental parameters in Beppu Bay. Open circles with numbers denote RD scores of each site. Oita, Ono and Haruki R. denote the distances between the sampling site and the mouth of each river; depth; the water depth; Temp, the bottom temperature; DO, the dissolved oxygen concentrations; Eh, the redox potential.