



HAL
open science

Inflammation-sensitive proteins and risk of atrial fibrillation: a population-based cohort study

Samuel Adamsson Eryd, J. Gustav Smith, Olle Melander, Bo Hedblad,
Gunnar Engström

► **To cite this version:**

Samuel Adamsson Eryd, J. Gustav Smith, Olle Melander, Bo Hedblad, Gunnar Engström. Inflammation-sensitive proteins and risk of atrial fibrillation: a population-based cohort study. *European Journal of Epidemiology*, 2011, 26 (6), pp.449-455. 10.1007/s10654-011-9565-6 . hal-00680250

HAL Id: hal-00680250

<https://hal.science/hal-00680250>

Submitted on 19 Mar 2012

HAL is a multi-disciplinary open access archive for the deposit and dissemination of scientific research documents, whether they are published or not. The documents may come from teaching and research institutions in France or abroad, or from public or private research centers.

L'archive ouverte pluridisciplinaire **HAL**, est destinée au dépôt et à la diffusion de documents scientifiques de niveau recherche, publiés ou non, émanant des établissements d'enseignement et de recherche français ou étrangers, des laboratoires publics ou privés.

Title: Inflammation-sensitive proteins and risk of atrial fibrillation: A population-based cohort study.

Running title: Inflammation-sensitive proteins and AF

Authors: Samuel Adamsson Eryd, J. Gustav Smith, Olle Melander, Bo Hedblad, Gunnar Engström

Institution: Department of Clinical Sciences (SAE, OM, BH, GE), Lund University, Malmö, Sweden and Department of Cardiology (JGS), Lund University, Lund.

Corresponding author: Samuel Adamsson Eryd

Tel: +4673 0628382

Fax: +4640391340

Adress: Cardiovascular Epidemiology research group, Department of Clinical Sciences Lund University, Skåne University Hospital

Entrance 72, building 60, floor 13, 20205, Malmö, Sweden

E-mail: samuel.adamsson_eryd@med.lu.se

Abstract

Low-grade inflammation has been repeatedly associated with cardiovascular diseases but the relationship with incidence of atrial fibrillation (AF) remains unclear. We explored the association between elevated plasma levels of inflammation-sensitive proteins (ISPs) and incidence of AF in a population-based cohort.

Plasma levels of five ISPs (fibrinogen, haptoglobin, ceruloplasmin, α_1 -antitrypsin and orosomucoid) and two complement factors (C3 and C4) were measured in 6031 men (mean age 46.8 years) without history of myocardial infarction, heart failure, stroke or cancer.

Incidence of hospitalizations due to AF during a mean follow-up of 25 years was studied both in relation to individual inflammatory proteins and the number of elevated ISPs.

During follow-up, 667 patients were hospitalized with a diagnosis of AF. After adjustment for potential confounding factors, the hazard ratios (HR) for AF were 1.00 (reference), 1.08 (95% CI: 0.88-1.31), 1.07 (CI: 0.84-1.36), and 1.40 (CI: 1.12-1.74), respectively, in men with none, one, two and three or more ISPs in the 4th quartile (p for trend = 0.007). Ceruloplasmin was the only individual ISP significantly associated with incidence of AF after adjustment for confounding factors (HR 1.17 per standard deviation, 95% CI: 1.08-1.26).

In conclusion, a score of five ISPs was associated with long-term incidence of hospitalizations due to AF in middle-aged men. Of the individual ISPs, a significant association was observed for ceruloplasmin, a protein previously associated with copper metabolism and oxidative stress.

Keywords: Atrial fibrillation; Inflammation, Epidemiology

Abbreviations:

AF – Atrial fibrillation

BMI – Body Mass Index

CRP – C-reactive protein

CVD – Cardiovascular disease

ISPs – Inflammatory sensitive proteins

LDL – Low-density lipoprotein

Introduction

Atrial fibrillation (AF) is the most common cardiac arrhythmia in the general population, and a major cause of morbidity and mortality (1-4). Lifetime risk for development of AF has been estimated to 1 in 4 in individuals aged 40 years or more (5). High age, hypertension, smoking, obesity, myocardial infarction and heart failure are major risk factors for AF in the general population (6-8).

It is now widely accepted that systemic low-grade inflammation is a risk factor for cardiovascular disease (CVD). Many studies have reported relationships between raised plasma levels of inflammatory markers and incidence of myocardial infarction and stroke (9-13). In studies of patients with AF, inflammation has been associated with perpetuation of AF and poor conversion rates (14). However, whether inflammation is associated with incidence of AF remains unclear. C-reactive protein (CRP) was associated with increased incidence of AF in a study of elderly Americans (15) and in the Framingham study (16). A study of healthy subjects reported that CRP was associated with incidence of AF, but only in the presence of high C3 and C4 levels (17). A recent study reported that a panel of 12 inflammatory markers predicted incidence of AF. However, no individual marker predicted AF when incidence of myocardial infarction was taken into account (18).

Studies from the Malmö Preventive Study, Sweden, have shown that elevated plasma levels of five inflammation-sensitive proteins (ISPs; fibrinogen, haptoglobin, ceruloplasmin, α_1 -antitrypsin and orosomucoid) are risk factors for myocardial infarction, heart failure and stroke. These proteins have been associated with incidence of cardiovascular disease, both when studied individually, and as a composite score of inflammation (9, 19). The purpose of this population-based cohort study was to explore whether these ISPs are associated with incident AF during a long-term follow-up among middle-aged men without history of CVD.

Methods

Between 1974 and 1984, 22444 men, aged 26 to 61 years, participated in a screening program for the detection of individuals at high risk for CVD. The participation rate was 71%. As a part of the program, plasma levels of five ISPs were determined for a random sample of 6193 men. After exclusion of men with a history of cancer, atrial fibrillation, heart failure, myocardial infarction or stroke, and 17 subjects with missing data on blood pressure and cholesterol, 6031 men remained. Mean age was 46.8 ± 3.7 years.

The health service authority of Malmö approved and funded the screening program. The regional ethics committee approved the data linkage with the Swedish population- and hospital registers. Participants provided informed consent.

Baseline examination

Blood samples were drawn after an overnight fast. Levels of serum cholesterol were determined using standard methods at the laboratory of Malmö University hospital. Diabetes was defined as fasting whole blood glucose ≥ 6.1 mmol/l, 2-h post-glucose load ≥ 10.0 mmol/l, or self-reported diabetes (20). Body mass index (BMI) was calculated as weight/height². Blood pressure (mm Hg) was measured twice in the right arm using a sphygmomanometer after 10 minutes of rest. Data on smoking habits and antihypertensive treatment was ascertained from a questionnaire. Physical inactivity in spare time was assessed using the question ‘Are you mostly engaged in sedentary activities in spare time, for example, watching TV, reading, going to the movie?’

Subjects who reported a physician’s diagnosis of angina pectoris or who used nitrates were considered to have angina pectoris. The question ‘Do you use any heart drugs?’ assessed use of heart medications.

Alcohol consumption was assessed using the modified shortened version of the Michigan Alcoholism Screening Test (21). Men with more than two of nine affirmative answers were considered to have high alcohol consumption.

ISPs, complement components

Plasma levels of five ISPs and two complement components were assessed by means of an electroimmunometric assay (22). The analysis was performed consecutively at the time of study entry. The lower detection limits were 20 mg/L for ceruloplasmin, 50 mg/L for α_1 -antitrypsin and 350 mg/L for orosomuroid, haptoglobin and fibrinogen, respectively. C3 and C4 were originally expressed as the percentages of the mean values from a reference population of blood donors. In order to facilitate the interpretation of the C3 and C4 values, the percentages have been converted into grams/litre (C3 100% = 0.98 g/L, C4 100% = 0.20 g/L)(23). The coefficient of variation was <5%.(22)

In accordance with previous studies from this cohort, relations with incidence of AF are presented in relation to the number of raised ISPs (fibrinogen, orosomuroid, α_1 -antitrypsin, haptoglobin, and ceruloplasmin) in the top quartile (9, 19, 23). We have previously shown that all ISPs are associated with incidence of CVD, with largely the same relative risks for all individual ISPs (9). The reliability in terms of internal consistency was fully adequate for this composite score (Cronbach's $\alpha=0.65$). Median values for the ISPs were 3.46 g/L (interquartile range, 3.0 to 4.0 g/L) for fibrinogen, 0.80 g/L (0.67 to 0.93 g/L) for orosomuroid, 1.28 g/L (1.09 to 1.42 g/L) for α_1 -antitrypsin, 1.30 g/L (0.89 to 1.75 g/L) for haptoglobin, and 0.30 g/L (0.26 to 0.35 g/L) for ceruloplasmin.

Of the complement factors, median (interquartile range) was 0.98 g/L (0.86 to 1.15) for C3 and 0.23 g/L (0.18-0.28) for C4.

Follow-up

All men were followed from the baseline examination until first hospitalization due to AF, death, emigration from Sweden, or December 31, 2006. AF was defined as a diagnosis of either atrial fibrillation or atrial flutter as in previous studies (6, 8, 24, 25), given the close relationship between these diseases (26). Subjects were considered to have AF if diagnosed with a primary or contributory hospital discharge diagnosis code 427.92 (ICD-8), 427D (ICD-9) or I48 (ICD-10). Since inflammation is associated with increased incidence of myocardial infarction, which could cause AF, we performed secondary analyses, in which cases with incident myocardial infarction (ICD codes I21 or 410) during follow-up were followed until the day of the infarction and censored after that. The Swedish Hospital Discharge register was used for case-retrieval. A validation study has shown that case misclassification of AF in national registers is small (8).

Statistics

One-way ANOVA and Pearson χ^2 were used to compare men with and without AF during follow-up. Cox proportional hazards regression was used to compare incidence of AF between men in different categories of ISPs and to estimate hazard ratios (HR) adjusted for potential confounding factors. In accordance with previous studies (9, 19), incidence of AF was first analysed in relation to the number of elevated ISPs, and secondly, in relation to the individual proteins. The fit of the proportional hazards model was confirmed by plotting the AF incidence rates over time for different categories of risk factors, and by introducing time-dependent variables in the model. The model was adjusted for cardiovascular risk factors associated with AF. All analyses were performed in SPSS version 17 or in PASW Statistics 18 (SPSS Inc, Chicago, Illinois, USA).

Results

During a mean follow-up of 25 years, 667 men (11%, 4.4 per 1000 person years) were diagnosed with AF. Baseline levels of ceruloplasmin were significantly higher in men who were hospitalized due to AF during follow-up ($p<0.05$). Age, BMI, blood pressure, anti-hypertensive medication, diabetes, angina, and high alcohol consumption were also significantly higher in men who developed AF (Table 1).

Incidence of atrial fibrillation in relation to ISPs

Incidence of AF was significantly associated with the number of elevated ISPs (Table 2). The ISPs were elevated several years before the incident events of AF (Figure 1). The relationship remained significant after adjustments for possible confounding factors. Other independent predictors for AF in the risk factor adjusted analysis were age (HR per year: 1.09, 95% confidence interval (CI): 1.07-1.12), BMI (HR per kg/m^2 : 1.06, 95% CI: 1.04-1.09), systolic blood pressure (HR per mm Hg: 1.008, 95% CI: 1.003-1.013), anti-hypertensive medication (HR: 1.38, 95% CI 1.02-1.86), smoking (HR: 1.23, 95% CI: 1.04-1.46) and high alcohol consumption (HR: 1.44, 95% CI: 1.16-1.79). No significant relationship was observed for cholesterol, diabetes or physical activity.

In secondary analyses, censoring was performed at incident myocardial infarction. A total of 528 men had incident AF without previous or concomitant myocardial infarction. The association between ISPs and AF was essentially unchanged. After adjustment for risk factors, the HRs were 1.00 (reference), 1.13 (95% CI: 0.91-1.41), 1.16 (95% CI: 0.89-1.53) and 1.51 (95% CI: 1.18-1.93), respectively, for men with none, 1, 2, and 3 or more ISPs in the top quartile (p for trend=0.002).

Incidence of atrial fibrillation in relation to individual ISPs

When expressed as age-adjusted HR per standard deviation increase of plasma concentration, all ISPs except α_1 -antitrypsin showed significant associations with incidence of AF. After adjustments for confounding factors, ceruloplasmin was the only protein which remained significantly associated with incidence of AF (Table 3). This association was unchanged when subjects with myocardial infarction were censored from the analysis.

Complement components and incidence of AF

There was no significant association between complement C3 or C4 and incidence of AF (Table 3). Incidence of AF was explored for different combinations of high complement C3 or C4 and high ISP levels. There was no indication that C3 or C4 modified the relationship between the ISPs and incidence of AF.

Discussion

It is now widely accepted that systemic low-grade inflammation is a risk factor for cardiovascular disease and many studies have reported relationships between inflammatory markers and incidence of myocardial infarction and stroke. However, whether inflammation is associated with incidence of AF remains unclear. The present study showed that a composite score of five acute phase proteins was significantly associated with incidence of AF. When considered individually, only ceruloplasmin showed a significant association with AF. These relationships remained after adjustment for several potential confounding factors.

Recent studies of different groups of patients suggest that inflammation has a role in initiating and perpetuating AF, and that inflammation correlates with duration of AF and cardioversion success rate (14). However, there is limited data from prospective population-

based studies. In general, the relationship between inflammation and AF does not seem to be as strong as the associations with myocardial infarction, heart failure and stroke (9, 19).

Schnabel et al recently reported that a panel of 12 inflammatory markers predicted incidence of AF. They found only osteoprotegerin to be significantly associated with AF. However, no individual marker predicted AF when incidence of myocardial infarction was taken into account. Fibrinogen, which was the only biomarker also examined in the present study, did not show any significant relationship with AF in that study (18). A study of 5806 men and women (mean age 73 ± 5 years) who were followed during a mean time of 6.9 years reported increased incidence of AF in subjects with high C-reactive protein (CRP)(15). A study of 1032 middle-aged healthy subjects, followed over four years, reported that CRP was associated with AF only in the presence of raised levels of complement C3 (17). Recent reports from the Framingham Heart study and from the Malmö Diet and Cancer study found an independent association between CRP and AF, but no improvement in disease discrimination (16, 25). Mean age of these studies were approximately 58 years, as compared to the mean age of 46.8 years in the present study. A recent 'Mendelian randomization study' on 47000 individuals showed that elevated plasma CRP was associated with increased risk of AF. Importantly, genetically elevated CRP levels were not associated with AF in that study. This suggest that plasma CRP per se does not increase AF risk (27). However, there could still be an important role for other markers of the underlying systemic inflammation. To our knowledge, there is no previous study on ceruloplasmin in relation to incidence of atrial fibrillation.

The results in the present study indicate that elevated levels of acute-phase proteins, in particular ceruloplasmin, may precede AF. The association between AF and ceruloplasmin is markedly stronger than the relationship with the other ISPs in our study. Ceruloplasmin has

strong oxidant effects and has been shown to induce LDL oxidation (28). The protein contains seven copper atoms per molecule, accounting for approximately 95% of the total circulating copper in healthy adults (29). Removal of one of the copper atoms completely blocks the oxidative activity of ceruloplasmin (28). Turnlund et al showed that long-term high copper intake resulted in significantly elevated ceruloplasmin enzymatic activity (30). Emerging evidence implicates a role of oxidative stress in the initiation and maintenance of AF, in which oxidative stress may cause remodelling of the atrium (31-33). This could be a possible link between ceruloplasmin and incidence of AF.

It has been suggested that raised levels of inflammatory markers may not be a reflection of the arrhythmia itself but a result of confounding of the underlying cardiac pathology (34). However, mean age was rather low in this study, individuals with known cardiovascular diseases were excluded and incidence of AF occurred many years after the baseline examination. It therefore seems unlikely that the present results can be explained by reverse causation. Several pieces of evidence also indicate that inflammation could have a causal role in the initiation and perpetuation of AF, possibly by inducing structural remodeling of the atrium. This hypothesis is partly based on histological studies which demonstrated inflammatory infiltrates in AF patients and in animal models of AF (35-37).

Hypertension and obesity are the two major risk factors for AF, and inflammation has been suggested as a mediator of these associations (38). Although the model was adjusted for baseline levels of these factors, it is still possible that some men developed hypertension and obesity during the follow-up period. Longitudinal studies have shown that low-grade systemic inflammation is a risk factor for development of hypertension and obesity (39, 40).

Some methodological issues need to be considered. The endpoints of this study were retrieved using the Swedish hospital discharge register. Some atrial fibrillations might only be treated in primary care, and are therefore not included in this study. However, the estimates of

prevalence and incidence in a recent validation study from this population were largely comparable with other epidemiological studies of AF (8). Since all diagnoses were settled during hospital stay, most cases are assumed to be valid. A validation study of cases retrieved from the Swedish national registers showed that the validity of the diagnosis is very high (8).

Another limitation is that electrocardiographic information at baseline was not available, suggesting that some cases may have had AF already when entering the study. However, since mean age at baseline was only 47 years, and considering the fact that AF is strongly related to age, the number of cases with AF at baseline is assumed to be small. CRP was not used in clinical practice at the time when this study started and was therefore not available in our study.

Mean age in this study was rather low, and very few participants used any heart drug at the time when the study started. We do not know how many received anti-arrhythmic drugs during the follow-up period. If anything, however, anti-arrhythmic drugs would weaken the association between ISPs and atrial fibrillation, thereby increasing the risk of a false negative result.

We do not know if the incident cases were classified as paroxysmal, persistent or permanent AF. However, the subcategories of AF overlap to a great extent. Most cases of paroxysmal AF seem to evolve into persistent and permanent AF (41). The arrhythmia is discovered in different phases in different patients depending on what symptoms the patient experience.

As plasma levels were only measured at baseline, the levels of ISPs may have changed before disease manifestation. This is a limitation. However, this “regression dilution” might result in an underestimation of the actual risk (42).

Previous studies have shown that the ISPs studied here are risk factors for developing myocardial infarction (9). One question is whether the increased risk of AF could be

explained by the increased incidence of myocardial infarction in men with low-grade inflammation. However, when excluding cases with incident myocardial infarctions during follow-up, risk estimates remained significant and even increased slightly, which indicates that the relationship between ISPs and AF is independent of myocardial infarction. However, we were unable to account for patients with silent myocardial infarction, i.e. who were not hospitalized.

It should be mentioned that the primary analysis using a score of all five ISPs was decided a priori based on the methods used in previous studies (9, 19). The analyses of individual ISPs could therefore be considered as secondary analyses. However, the p-value for the relationship between ceruloplasmin and incidence of atrial fibrillation would be significant even after a Bonferroni-correction.

In conclusion, our study shows that a score of five inflammation sensitive proteins are associated with long-term incidence of hospitalizations due to atrial fibrillation in middle-aged men. When inflammatory markers were considered individually, a significant association was observed with ceruloplasmin.

Acknowledgements

This work was supported by grants from the Swedish Heart and Lung foundation, the Swedish Research Council, the Scania Regional Government, Malmö University Hospital Foundation and Erhold Lundströms Foundation.

Conflicts of interest

Gunnar Engström is employed as senior epidemiologist by AstraZeneca R&D, Lund, Sweden. Samuel Adamsson Eryd, J. Gustav Smith, Olle Melander and Bo Hedblad have no potential conflicts of interest.

References

1. Go AS, Hylek EM, Phillips KA, Chang Y, Henault LE, Selby JV, et al. Prevalence of diagnosed atrial fibrillation in adults: national implications for rhythm management and stroke prevention: the AnTicoagulation and Risk Factors in Atrial Fibrillation (ATRIA) Study. *JAMA* 2001;285(18):2370-5.
2. Miyasaka Y, Barnes ME, Gersh BJ, Cha SS, Bailey KR, Abhayaratna WP, et al. Secular trends in incidence of atrial fibrillation in Olmsted County, Minnesota, 1980 to 2000, and implications on the projections for future prevalence. *Circulation* 2006;114(2):119-25.
3. Wolf PA, Benjamin EJ, Belanger AJ, Kannel WB, Levy D, D'Agostino RB. Secular trends in the prevalence of atrial fibrillation: The Framingham Study. *Am Heart J* 1996;131(4):790-5.
4. Kannel WB, Benjamin EJ. Current perceptions of the epidemiology of atrial fibrillation. *Cardiol Clin* 2009;27(1):13-24, vii.
5. Lloyd-Jones DM, Wang TJ, Leip EP, Larson MG, Levy D, Vasan RS, et al. Lifetime risk for development of atrial fibrillation: the Framingham Heart Study. *Circulation* 2004;110(9):1042-6.
6. Benjamin EJ, Levy D, Vaziri SM, D'Agostino RB, Belanger AJ, Wolf PA. Independent risk factors for atrial fibrillation in a population-based cohort. The Framingham Heart Study. *JAMA* 1994;271(11):840-4.
7. Psaty BM, Furberg CD, Kuller LH, Bild DE, Rautaharju PM, Polak JF, et al. Traditional risk factors and subclinical disease measures as predictors of first myocardial infarction in older adults: the Cardiovascular Health Study. *Arch Intern Med* 1999;159(12):1339-47.
8. Smith JG, Platonov PG, Hedblad B, Engstrom G, Melander O. Atrial fibrillation in the Malmo Diet and Cancer study: a study of occurrence, risk factors and diagnostic validity. *Eur J Epidemiol* 2010;25(2):95-102.
9. Engstrom G, Lind P, Hedblad B, Stavenow L, Janzon L, Lindgarde F. Effects of cholesterol and inflammation-sensitive plasma proteins on incidence of myocardial infarction and stroke in men. *Circulation* 2002;105(22):2632-7.
10. Koenig W. Fibrin(ogen) in cardiovascular disease: an update. *Thromb Haemost* 2003;89(4):601-9.
11. Danesh J, Wheeler JG, Hirschfield GM, Eda S, Eiriksdottir G, Rumley A, et al. C-reactive protein and other circulating markers of inflammation in the prediction of coronary heart disease. *N Engl J Med* 2004;350(14):1387-97.
12. Lowe GD. Circulating inflammatory markers and risks of cardiovascular and non-cardiovascular disease. *J Thromb Haemost* 2005;3(8):1618-27.
13. Danesh J, Lewington S, Thompson SG, Lowe GD, Collins R, Kostis JB, et al. Plasma fibrinogen level and the risk of major cardiovascular diseases and nonvascular mortality: an individual participant meta-analysis. *JAMA* 2005;294(14):1799-809.

14. Issac TT, Dokainish H, Lakkis NM. Role of inflammation in initiation and perpetuation of atrial fibrillation: a systematic review of the published data. *J Am Coll Cardiol* 2007;50(21):2021-8.
15. Aviles RJ, Martin DO, Apperson-Hansen C, Houghtaling PL, Rautaharju P, Kronmal RA, et al. Inflammation as a risk factor for atrial fibrillation. *Circulation* 2003;108(24):3006-10.
16. Schnabel RB, Larson MG, Yamamoto JF, Sullivan LM, Pencina MJ, Meigs JB, et al. Relations of biomarkers of distinct pathophysiological pathways and atrial fibrillation incidence in the community. *Circulation* 2010;121(2):200-7.
17. Dernellis J, Panaretou M. Effects of C-reactive protein and the third and fourth components of complement (C3 and C4) on incidence of atrial fibrillation. *Am J Cardiol* 2006;97(2):245-8.
18. Schnabel RB, Larson MG, Yamamoto JF, Kathiresan S, Rong J, Levy D, et al. Relation of multiple inflammatory biomarkers to incident atrial fibrillation. *Am J Cardiol* 2009;104(1):92-6.
19. Engstrom G, Hedblad B, Tyden P, Lindgarde F. Inflammation-sensitive plasma proteins are associated with increased incidence of heart failure: a population-based cohort study. *Atherosclerosis* 2009;202(2):617-22.
20. Engstrom G, Stavenow L, Hedblad B, Lind P, Eriksson KF, Janzon L, et al. Inflammation-sensitive plasma proteins, diabetes, and mortality and incidence of myocardial infarction and stroke: a population-based study. *Diabetes* 2003;52(2):442-7.
21. Kristenson H, Trell E. Indicators of alcohol consumption: comparisons between a questionnaire (Mm-MAST), interviews and serum gamma-glutamyl transferase (GGT) in a health survey of middle-aged males. *Br J Addict* 1982;77(3):297-304.
22. Laurell CB. Electroimmuno assay. *Scand J Clin Lab Invest Suppl* 1972;124:21-37.
23. Engstrom G, Hedblad B, Eriksson KF, Janzon L, Lindgarde F. Complement C3 is a risk factor for the development of diabetes: a population-based cohort study. *Diabetes* 2005;54(2):570-5.
24. Psaty BM, Manolio TA, Kuller LH, Kronmal RA, Cushman M, Fried LP, et al. Incidence of and risk factors for atrial fibrillation in older adults. *Circulation* 1997;96(7):2455-61.
25. Smith JG, Newton-Cheh C, Almgren P, Struck J, Morgenthaler NG, Bergmann A, et al. Assessment of conventional cardiovascular risk factors and multiple biomarkers for the prediction of incident heart failure and atrial fibrillation. *J Am Coll Cardiol* 2010;56(21):1712-9.
26. Waldo AL, Feld GK. Inter-relationships of atrial fibrillation and atrial flutter mechanisms and clinical implications. *J Am Coll Cardiol* 2008;51(8):779-86.
27. Marott SC, Nordestgaard BG, Zacho J, Friberg J, Jensen GB, Tybjaerg-Hansen A, et al. Does elevated C-reactive protein increase atrial fibrillation risk? A Mendelian randomization of 47,000 individuals from the general population. *J Am Coll Cardiol* 2010;56(10):789-95.
28. Ehrenwald E, Chisolm GM, Fox PL. Intact human ceruloplasmin oxidatively modifies low density lipoprotein. *J Clin Invest* 1994;93(4):1493-501.
29. Ryden L. In: Lontie R, editor. *Copper proteins and copper enzymes*. Boca Raton, Florida: CRC Press; 1984. p. 37-100.
30. Turnlund JR, Jacob RA, Keen CL, Strain JJ, Kelley DS, Domek JM, et al. Long-term high copper intake: effects on indexes of copper status, antioxidant status, and immune function in young men. *Am J Clin Nutr* 2004;79(6):1037-44.

31. Mihm MJ, Yu F, Carnes CA, Reiser PJ, McCarthy PM, Van Wagoner DR, et al. Impaired myofibrillar energetics and oxidative injury during human atrial fibrillation. *Circulation* 2001;104(2):174-80.
32. Ozaydin M, Peker O, Erdogan D, Kapan S, Turker Y, Varol E, et al. N-acetylcysteine for the prevention of postoperative atrial fibrillation: a prospective, randomized, placebo-controlled pilot study. *Eur Heart J* 2008;29(5):625-31.
33. Neuman RB, Bloom HL, Shukrullah I, Darrow LA, Kleinbaum D, Jones DP, et al. Oxidative stress markers are associated with persistent atrial fibrillation. *Clin Chem* 2007;53(9):1652-7.
34. Ellinor PT, Low A, Patton KK, Shea MA, MacRae CA. C-Reactive protein in lone atrial fibrillation. *Am J Cardiol* 2006;97(9):1346-50.
35. Pan M, Zhu JH, Jiang WP, Liu ZH, Li HM, Yu XH, et al. Inflammation: a possible pathogenic link to atrial fibrillation. *Med Hypotheses* 2006;67(6):1305-7.
36. Frustaci A, Chimenti C, Bellocci F, Morgante E, Russo MA, Maseri A. Histological substrate of atrial biopsies in patients with lone atrial fibrillation. *Circulation* 1997;96(4):1180-4.
37. Nakamura Y, Nakamura K, Fukushima-Kusano K, Ohta K, Matsubara H, Hamuro T, et al. Tissue factor expression in atrial endothelia associated with nonvalvular atrial fibrillation: possible involvement in intracardiac thrombogenesis. *Thromb Res* 2003;111(3):137-42.
38. Conen D, Osswald S, Albert CM. Epidemiology of atrial fibrillation. *Swiss Med Wkly* 2009;139(25-26):346-52.
39. Engstrom G, Janzon L, Berglund G, Lind P, Stavenow L, Hedblad B, et al. Blood pressure increase and incidence of hypertension in relation to inflammation-sensitive plasma proteins. *Arterioscler Thromb Vasc Biol* 2002;22(12):2054-8.
40. Engstrom G, Hedblad B, Stavenow L, Lind P, Janzon L, Lindgarde F. Inflammation-sensitive plasma proteins are associated with future weight gain. *Diabetes* 2003;52(8):2097-101.
41. Camm AJ, Kirchhof P, Lip GY, Schotten U, Savelieva I, Ernst S, et al. Guidelines for the management of atrial fibrillation: the Task Force for the Management of Atrial Fibrillation of the European Society of Cardiology (ESC). *Eur Heart J*;31(19):2369-429.
42. Wood AM, White I, Thompson SG, Lewington S, Danesh J. Regression dilution methods for meta-analysis: assessing long-term variability in plasma fibrinogen among 27,247 adults in 15 prospective studies. *Int J Epidemiol* 2006;35(6):1570-8.

Text tables

Table 1. Baseline characteristics in subjects with and without atrial fibrillation during follow-up

	Atrial fibrillation		<i>p</i>
	No (<i>n</i> =5364)	Yes (<i>n</i> =667)	
Age (years)	46.7 ± 3.7	47.8 ± 3.4	<0.001
BMI (kg/m ²)	24.9 ± 3.3	25.7 ± 3.5	<0.001
Systolic BP (mmHg)	128.7 ± 15.5	132.2 ± 16.4	<0.001
Diastolic BP (mm Hg)	86.9 ± 10.0	89.1 ± 10.7	<0.001
Anti-hypertensive medication (%)	4.2	7.8	<0.001
Cholesterol (mmol/L)	5.69 ± 1.04	5.73 ± 0.98	0.37
Triglycerides (mmol/L) [#]	1.58 ± 1.11	1.58 ± 0.90	0.87
Smokers (%)	48	48	0.33
Diabetes (%)	4.7	4.9	<0.001
Angina (%)	1.2	1.6	<0.001
Heart drug (%)	0.4	0.3	0.72
Physical inactivity (%)	57	54	0.058
High alcohol consumption (%)	13	15	<0.001
Heart rate [#]	68 ± 10	67 ± 10	0.19
<i>ISPs (g/L)</i>			
Fibrinogen	3.5 ± 0.80	3.6 ± 0.80	0.12
Haptoglobin	1.38 ± 0.67	1.39 ± 0.73	0.76
Ceruloplasmin	0.316 ± 0.07	0.322 ± 0.07	0.015
α ₁ -Antitrypsin	1.27 ± 0.27	1.28 ± 0.27	0.50
Orosomuroid	0.82 ± 0.20	0.83 ± 0.21	0.18
<i>Complement components</i>			
C3 [#]	103.0 ± 22.7	103.8 ± 22.6	0.43
C4 [#]	120.9 ± 40.2	120.6 ± 40.2	0.89

[#] Results on C3, C4, triglycerides and heart rate was based on 5817, 5813, 6019 and 5984 subjects, respectively.

Table 2. Incidence of atrial fibrillation in relation to number of elevated ISPs

	Number of elevated ISPs				<i>p</i> for trend
	None <i>n</i> = 2437	One <i>n</i> = 1555	Two <i>n</i> = 891	Three or more <i>n</i> = 1148	
Atrial fibrillation <i>n</i> (%)	253 (10.4)	173 (11.1)	96 (10.8)	145 (12.6)	
AF per 1000 person-years	4.00	4.46	4.48	5.54	
Age adjusted HR	1.0	1.16 (0.96-1.41)	1.19 (0.94-1.51)	1.61 (1.31-1.98)	<0.001
+ risk factors ^a	1.0	1.08 (0.88-1.31)	1.07 (0.84-1.36)	1.39 (1.12-1.74)	0.007

^aHazard ratios (95% CI) adjusted for age, BMI, systolic blood pressure, anti-hypertensive medication, angina, total cholesterol, smoking, diabetes, physical activity and alcohol consumption.

Table 3. Incidence of atrial fibrillation in relation to individual inflammation-sensitive proteins and complement components.

	Age adjusted HR	<i>p</i>	+ risk factors*	<i>p</i>
Fibrinogen	1.13 (1.05-1.22)	0.002	1.07 (0.99-1.16)	0.11
Haptoglobin	1.13 (1.05-1.22)	0.001	1.08 (1.00-1.17)	0.056
Ceruloplasmin	1.17 (1.08-1.26)	<0.001	1.13 (1.04-1.22)	0.003
α_1 -Antitrypsin	1.07 (0.99-1.16)	0.087	1.04 (0.96-1.12)	0.34
Orosomuroid	1.13 (1.05-1.22)	0.001	1.06 (0.98-1.15)	0.14
C3	1.10 (1.02-1.19)	0.020	1.01 (0.93-1.09)	0.90
C4	1.01 (0.93-1.09)	0.80	0.96 (0.89-1.05)	0.37

Presented as hazards ratios (HR) per standard deviation increase of the plasma protein concentration.

Standard deviation values for the plasmaproteins were 0.80 g/L for fibrinogen, 0.68 g/L for haptoglobin, 0.067 g/L for ceruloplasmin, 0.27 g/L for α_1 -antitrypsin, 0.20 g/L for orosomuroid 0.22 g/L for C3, 0.080 g/L for C4.

* Adjusted for age, BMI, systolic blood pressure, anti-hypertensive medication, angina, total cholesterol, smoking, diabetes, physical activity and alcohol consumption.

Figures

Figure 1. Incidence of hospitalizations due to AF over a mean follow-up of 25 years, in relation to the number of elevated ISPs.

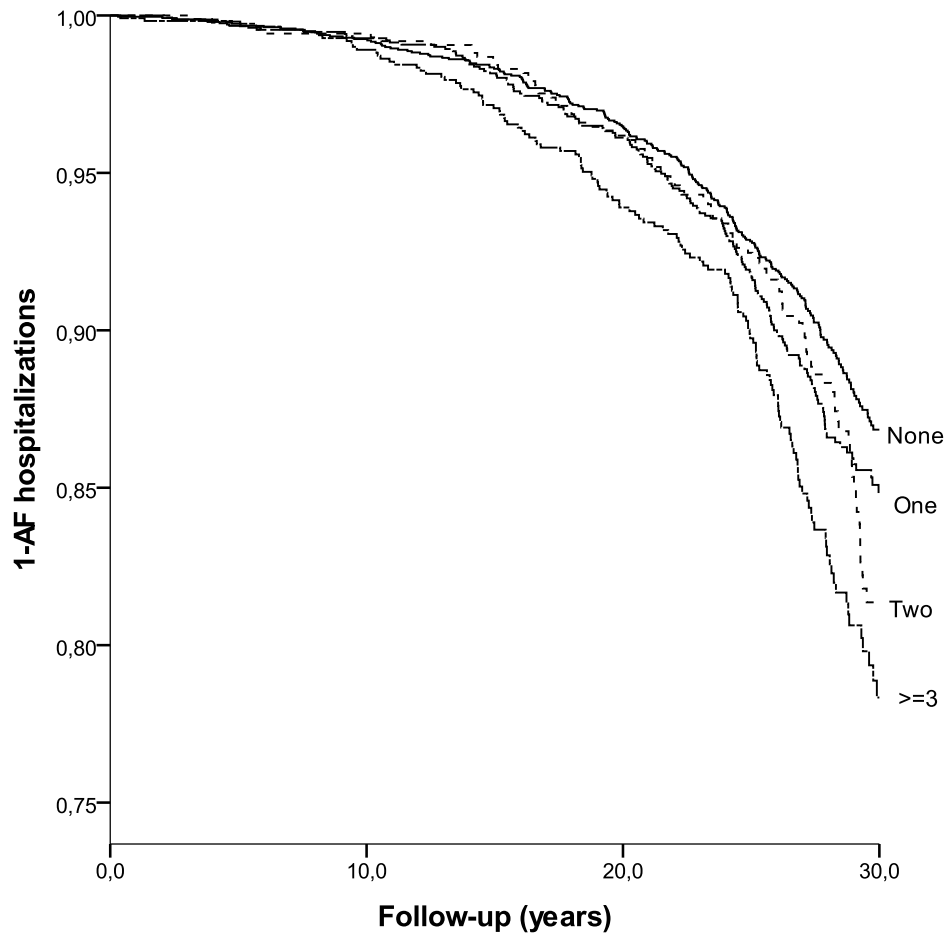


Figure 2. Incidence of hospitalizations due to AF over a mean follow-up of 25 years, in relation to quartiles of ceruloplasmin.

