



**HAL**  
open science

## Structural transformation of graphite by arc-discharge

Peter Harris

► **To cite this version:**

Peter Harris. Structural transformation of graphite by arc-discharge. Philosophical Magazine, 2011, pp.1. 10.1080/14786435.2011.562250 . hal-00680172

**HAL Id: hal-00680172**

**<https://hal.science/hal-00680172>**

Submitted on 18 Mar 2012

**HAL** is a multi-disciplinary open access archive for the deposit and dissemination of scientific research documents, whether they are published or not. The documents may come from teaching and research institutions in France or abroad, or from public or private research centers.

L'archive ouverte pluridisciplinaire **HAL**, est destinée au dépôt et à la diffusion de documents scientifiques de niveau recherche, publiés ou non, émanant des établissements d'enseignement et de recherche français ou étrangers, des laboratoires publics ou privés.



**Structural transformation of graphite by arc-discharge**

Journal:	<i>Philosophical Magazine &amp; Philosophical Magazine Letters</i>
Manuscript ID:	TPHM-10-Nov-0483.R1
Journal Selection:	Philosophical Magazine
Date Submitted by the Author:	02-Feb-2011
Complete List of Authors:	Harris, Peter; University of Reading, Centre for Advanced Microscopy
Keywords:	carbon, graphite, carbon nanotubes, fullerenes
Keywords (user supplied):	graphene

SCHOLARONE™  
Manuscripts

## Structural transformation of graphite by arc-discharge

Peter J.F. Harris

*Centre for Advanced Microscopy, J.J. Thomson Physical Laboratory, University of Reading, Whiteknights, Reading RG6 6AF, UK.*

*e-mail: [p.j.f.harris@rdg.ac.uk](mailto:p.j.f.harris@rdg.ac.uk)*

For Peer Review Only

## Structural transformation of graphite by arc-discharge

The formation of novel structures by the passage of an electric current through graphite is described. These structures apparently consist of hollow three-dimensional graphitic shells bounded by curved and faceted planes, typically made up of two graphene layers. The curved structures were frequently decorated with nano-scale carbon particles, or short nanotubes. In some cases, nanotubes were found to be seamlessly connected to the thin shells, indicating that the formation of the shells and the nanotubes is intimately connected. Small nanotubes or nanoparticles were also sometimes found encapsulated inside the hollow structures, while fullerene-like particles were often seen attached to the outside surfaces. With their high surface areas and structural perfection, the new carbon structures may have applications as anodes of lithium ion batteries or as components of composite materials.

### 1. Introduction

Interesting things can happen when an electric current is passed through graphite. In 1990, Krätschmer and Huffman and their co-workers showed that  $C_{60}$  is formed, in high yield, by vaporising graphite in a simple carbon arc apparatus under an atmosphere of helium [1]. Most of the  $C_{60}$  is deposited on the walls of the arc-evaporation vessel, along with disordered soot-like material. A short time later, Iijima showed that multiwalled carbon nanotubes with extremely perfect structures can be produced in a similar way [2], although in this case the nanotubes form on the negative graphite electrode. In 1993 it was shown that single-walled nanotubes can be produced by arc-discharge if Co and Ni or some other metal is added to the anode [3,4].

Recently, yet another kind of carbon has been discovered in graphite samples through which a current has been passed [5]. This new carbon apparently consists of hollow graphitic shells bounded by curved and faceted planes, typically made up of two graphene layers. These structures were first found in a commercial ultra-pure graphite. It is believed that they formed during a purification process which involved passing an electric current through the graphite. Support for this idea was provided by

1  
2  
3 some preliminary experiments involving the passage of a current through graphite  
4  
5 rods in a carbon arc apparatus, which produced very similar structures. In the present  
6  
7 study the controlled production of the novel graphene structures by the passage of an  
8  
9 electric current through graphite is described in detail. The material is characterised  
10  
11 using high resolution transmission electron microscopy, and evidence is presented  
12  
13 that the structures are three-dimensional rather than flat. The possible mechanism  
14  
15 whereby graphite could be transformed into the three-dimensional shells is discussed.  
16  
17  
18  
19

20 It is suggested that the new carbon structures might find applications in a wide  
21  
22 variety of areas. For example, their extremely large surface-to-volume ratio and likely  
23  
24 high conductivity suggest that they may be useful in sensors or lithium ion batteries.  
25  
26 They may also have potential in catalysis or as hydrogen storage materials.  
27  
28  
29

## 30 **2. Experimental**

31  
32  
33 The apparatus used to produce the new carbon structures was an Edwards  
34  
35 S150B evaporation unit. This is normally used for coating scanning electron  
36  
37 microscopy specimens with a thin layer of carbon. In this unit, the electrodes are 3  
38  
39 mm graphite rods, one of which is sharpened to a point and held in contact with the  
40  
41 other electrode with a spring mechanism. High purity rods were used, with impurity  
42  
43 content <20ppm (Agar Scientific Ltd., UK). The chamber was pumped by a rotary  
44  
45 pump, giving a vacuum of approximately 0.1 Torr. Discharge was carried out at a  
46  
47 voltage of 10 V, with a current of approximately 20 A, for a duration of about 2  
48  
49 minutes. These are the standard conditions for carbon coating, although with a rather  
50  
51 longer duration. Following arcing, the pointed electrode was generally found to have  
52  
53 been shortened by a few mm, and a small deposit could be observed near the point of  
54  
55 contact of the two electrodes. This deposit was scraped from the electrodes and then  
56  
57 prepared for TEM by dispersing in iso-propanol and then pipetting onto holey carbon  
58  
59  
60

1  
2  
3 TEM films. A sample of a fresh graphite rod was also examined by TEM. The  
4  
5 microscope used was a JEOL 2010, with a point resolution of 0.19 nm, operated at an  
6  
7 accelerating voltage of 200kV. Images were recorded photographically.  
8  
9

### 10 11 **3. Results**

12  
13 A micrograph of material from the fresh graphite rod is shown in Fig. 1(a). As  
14  
15 expected, this consists mainly of flat crystallites, ranging from a few 100 nm to about  
16  
17 5  $\mu\text{m}$  in size, containing up to 100 layers. The crystallites were often folded and  
18  
19 buckled, and were accompanied by small amounts of disordered material. However,  
20  
21 nanotubes or other fullerene-related structures were not seen in the fresh graphite.  
22  
23  
24

25  
26 The carbon collected from the graphite rods following arcing contained some  
27  
28 “normal” graphite, but this was accompanied by many regions which had a very  
29  
30 different appearance. One of these areas is shown in Fig. 1(b). Here, the outline of the  
31  
32 structure is much more irregular than in the fresh graphite, with many curved and  
33  
34 unusually-shaped features. The material is decorated with numerous short nanotubes  
35  
36 or nanoparticles. An area in which a number of nanotubes can be seen is shown in  
37  
38 Fig. 2(a). These tubes typically possessed between two and four walls and could be  
39  
40 several 100 nm in length, but tended to be less perfect than those grown by the  
41  
42 traditional Iijima arc-evaporation method, in that they often contained sharp bends  
43  
44 and other discontinuities. In some cases nanotubes were found to be directly  
45  
46 connected to the larger structures; examples can be seen in this image. The  
47  
48 observation that nanotubes are joined seamlessly to the larger regions indicates that  
49  
50 these regions are three-dimensional rather than flat, the three-dimensional structure  
51  
52 arising from presence of pentagonal and other non-hexagonal rings. The junctions  
53  
54 between the tubes and the larger shell-like regions may involve seven-membered  
55  
56 rings.  
57  
58  
59  
60

1  
2  
3 A higher magnification image of another region is shown in Fig. 2(b). It can  
4  
5 be seen from this image that the graphene material is largely bilayer, but some three-  
6  
7 layer and single-layer graphene is also present. The single-layer graphene structures  
8  
9 were found to be very beam-sensitive, so obtaining high quality images of this  
10  
11 material proved difficult. The bilayer spacing, determined from this and other images,  
12  
13 was generally somewhat larger than the interplanar spacing for graphite, being  
14  
15 typically around 0.4 nm.  
16  
17  
18

19  
20 The thin graphitic material exhibited many unusual features. In some areas,  
21  
22 nanoparticles or nanotubes appeared to be encapsulated inside the large structures.  
23  
24 This is illustrated in Fig. 3, where a single-walled nanoparticle can be seen apparently  
25  
26 inside a bilayer shell. This provides further evidence that the thin graphitic structures  
27  
28 are hollow. Another interesting observation is that very small particles, which  
29  
30 appeared to be fullerenes, were frequently seen on the outside surfaces of the thin  
31  
32 graphitic structures, as shown in Fig. 4. It is notable that the fullerene particle, which  
33  
34 is approximately the size of a  $C_{60}$  molecule, is preferentially attached to the apex of  
35  
36 the faceted graphene structure. The interaction of fullerenes with the conical graphene  
37  
38 structures known as carbon nanohorns has been studied recently by Suarez-Martinez  
39  
40 and colleagues [6]. These workers have shown that fullerenes are frequently observed  
41  
42 at the tips of nanohorns, rather than on the main bodies of the structures. Although  
43  
44 this phenomenon is not fully understood [7], it suggests that fullerenes prefer to  
45  
46 become attached to regions containing pentagonal rings. Therefore, observations such  
47  
48 as that in Fig. 4 suggest that the apex of the faceted structure contains a pentagon.  
49  
50 This is supported by the fact that the apex makes an angle of approximately  $150^\circ$ .  
51  
52 This is close to the angle observed in certain MWNT caps, where a conical region  
53  
54  
55  
56  
57  
58  
59  
60

1  
2  
3 joins the cylindrical part of the tube (see ref. [8], p128). It is believed that a single  
4  
5 pentagon occurs at the point where the two regions are joined.  
6  
7  
8  
9

#### 10 11 **4. Discussion**

12  
13  
14 A remarkable transformation in the structure of graphite as a result of the  
15  
16 passage of an electric current in an arc-discharge apparatus has been described. It is  
17  
18 believed that this involves the formation of three-dimensional shell-like structures  
19  
20 bounded by very thin walls. In most cases these walls consist of bilayer graphene,  
21  
22 although walls with three or more layers are quite frequently seen. Single-layer  
23  
24 graphene structures are also occasionally observed. There are a number of reasons for  
25  
26 believing that these new structures are three-dimensional and hollow rather than flat.  
27  
28 Firstly, as reported here and in the previous paper [5], carbon nanotubes are often  
29  
30 observed to be seamlessly joined to the larger regions. It is difficult to envisage a way  
31  
32 in which nanotubes, with their circular cross-section, could be connected to flat, few  
33  
34 layer, graphene without being seriously distorted, at least in the vicinity of the  
35  
36 junction. Secondly, nanoparticles or nanotubes are sometimes found encapsulated  
37  
38 inside the large structures, as shown in Fig. 3, indicating that the structures are  
39  
40 hollow. Thirdly, small fullerene particles, similar in size to C<sub>60</sub> molecules, are often  
41  
42 found preferentially attached to the apices of faceted graphene structures, as in Fig. 4,  
43  
44 providing evidence for the presence of pentagonal rings.  
45  
46  
47  
48  
49  
50  
51  
52  
53

54  
55 Some structures rather similar to those described here have been reported in  
56  
57 recent studies by Jia and co-workers [9] and by Huang *et al.* [10]. These studies  
58  
59 involved in situ Joule heating of graphite “nanoribbons” inside a TEM. In both papers  
60  
the authors drew a different conclusion about the nature of the transformation to that



1  
2  
3 given here: the process was discussed in terms of sublimation and edge reconstruction  
4  
5 of flat graphene. It is possible, however, that they were seeing a transformation from  
6  
7 flat graphite to hollow structures, as described in the present work, rather than  
8  
9 sublimation.  
10  
11

12  
13  
14  
15 The mechanism of the transformation is not known at present, but a few  
16  
17 comments can be made. It is possible that the key to understanding the process may  
18  
19 lie in the edge structure of graphite planes. It is well established that graphite planes  
20  
21 often have “closed” edges, so that the layers resemble folded sheets [11 - 15], as  
22  
23 illustrated in Fig. 5 (a). In a sense, therefore, these adjacent graphene layers already  
24  
25 represent closed structures, and the transformations reported in this paper may simply  
26  
27 involve an “opening” of the layers, as shown schematically in Fig. 5 (b). Such a  
28  
29 process might be initiated by the nucleation of pentagonal rings at the closed edges: it  
30  
31 is clear from the presence of nanotube-like structures in the carbon, and the  
32  
33 attachment of fullerenes to the faceted structures, that pentagons are present. It also  
34  
35 seems clear that the electric current passing through the carbon, rather than simply the  
36  
37 high temperature, is responsible for the transformation. However, further work is  
38  
39 needed to gain a more detailed understanding of the process.  
40  
41  
42  
43  
44  
45  
46  
47

48 Although two-dimensional graphene has attracted huge interest in recent years  
49  
50 [16, 17], the possibility of producing large three-dimensional structures with graphene  
51  
52 walls has not been widely discussed. A few theorists have considered regular three-  
53  
54 dimensional networks built from small graphene patches (e.g. refs. [18 – 20]), but  
55  
56 these require three sheets to be joined along a line, usually with  $sp^3$ -bonded carbons,  
57  
58 rather than two sheets as in the structures reported here. In 1995 Ebbesen and Hiura  
59  
60

1  
2  
3 published a paper entitled “Graphene in 3-dimensions - towards graphite origami”,  
4  
5 but this was primarily concerned with using scanning probe microscopy to create  
6  
7 folds in graphene layers on the surface of highly ordered pyrolytic graphite [21]. The  
8  
9 resulting structures were still essentially two-dimensional. It has been suggested that  
10  
11 chemical techniques could be used to create three-dimensional structures from  
12  
13 graphene [22], or that nanoscale water droplets might induce graphene sheets to fold  
14  
15 up like the petals of a flower [23, 24]. However, none of these ideas have yet been  
16  
17 demonstrated experimentally. Currently, therefore, the technique described in this  
18  
19 paper is believed to be the only method for synthesising large, hollow structures with  
20  
21 ultrathin graphitic walls.  
22  
23  
24  
25  
26  
27  
28

29  
30 The new the three-dimensional graphene structures described here could  
31  
32 potentially have important applications. One possible area might be hydrogen storage,  
33  
34 since forms of carbon rather similar to those described here have been shown to have  
35  
36 H<sub>2</sub> storage capabilities. Thus, Orimo *et al.* reported in 1999 that “nanostructured  
37  
38 graphite” prepared by mechanical milling of synthetic graphite can have high H<sub>2</sub>  
39  
40 uptakes [25]. Carbon nanohorns have also been shown to have potentially useful H<sub>2</sub>  
41  
42 storage properties [26]. Theoreticians have suggested that “pillared graphene”, a  
43  
44 three-dimensional network constructed from graphene and short nanotubes, could  
45  
46 adsorb 6% of its weight in hydrogen at room temperature and pressure [27]. Although  
47  
48 the present material is a disordered rather than an ordered network, its H<sub>2</sub> storage  
49  
50 characteristics might be similar to those of “pillared graphene”.  
51  
52  
53  
54  
55  
56  
57

58 The new structures may also have applications in electrical devices. Recently,  
59  
60 it has been demonstrated that graphene can be used in electrochemical double layer

1  
2  
3 capacitors [28]. The high surface area graphitic shells reported here might actually  
4  
5 have advantages over conventional “flat” graphene in this application. The flat  
6  
7 graphene particles would have a tendency to clump together, while the faceted shells  
8  
9 would be more likely to retain their surface area. The high conductivity of the  
10  
11 structures, and their large internal volume might also make them potential candidates  
12  
13 for the anodes of lithium ion batteries [29].  
14  
15

16  
17  
18  
19  
20 Finally the mechanical properties of the graphitic shells might be superior in some  
21  
22 ways to those of flat graphene. Although graphene sheets are extremely stiff in  
23  
24 tension, they have little resistance to bending or compression. Curved or faceted  
25  
26 structures would be expected to have much greater flexural rigidity. The new  
27  
28 materials might therefore be useful components of composite materials.  
29  
30  
31  
32  
33

### 34 **Acknowledgement**

35  
36 I thank Kazu Suenaga for discussions.  
37  
38  
39

### 40 **References**

- 41  
42 [1] W. Krätschmer, L.D. Lamb, K. Fostiropoulos and D.R. Huffman, Nature 347  
43 (1990) p.354.  
44  
45 [2] S. Iijima, Nature 354 (1991) p.56.  
46  
47 [3] S. Iijima and T. Ichihashi, Nature 363 (1993) p.603.  
48  
49 [4] D.S. Bethune, C.H. Kiang, M.S. de Vries, G. Gorman, R. Savoy, J. Vazquez  
50 and R. Beyers, Nature 363 (1993) p.605.  
51  
52 [5] P.J.F. Harris, J. Phys.: Condens. Matter 21 (2009) 355009.  
53  
54 [6] I. Suarez-Martinez, C.P. Ewels, J. Mittal and M. Monthioux, submitted for  
55 publication (2011).  
56  
57 [7] I. Suarez-Martinez, M. Monthioux and C.P. Ewels, Journal of Nanoscience  
58 and Nanotechnology 9 (2009) p.6144.  
59  
60

- 1  
2  
3  
4  
5 [8] P.J.F. Harris, *Carbon Nanotube Science*, Cambridge University Press,  
6 Cambridge, 2009.  
7  
8 [9] X. Jia, M. Hofmann, V. Meunier, B.G. Sumpter, J. Campos-Delgado, J.M.  
9 Romo-Herrera, H. Son, Y.P. Hsieh, A. Reina, J. Kong, M. Terrones and M.S.  
10 Dresselhaus, *Science* 323 (2009) p.1701.  
11  
12 [10] J.Y. Huang, F. Ding, B.I. Yakobson, P. Lu, L. Qi and J. Li, *Proceedings of the*  
13 *National Academy of Sciences of the United States of America* 106 (2009)  
14 p.10103.  
15  
16 [11] D. Ugarte, *Chem. Phys. Lett.* 198 (1992) p.596.  
17  
18 [12] P.R. Buseck, H. Bo-Jun and L.P. Keller, *Energy and Fuels* 1 (1987) p.105.  
19  
20 [13] H. Murayama and T. Maeda, *Nature* 345 (1990) p.791.  
21  
22 [14] Y. Gogotsi, J.A. Libera, N. Kalashnikov and M. Yoshimura, *Science* 290  
23 (2000) p.317.  
24  
25 [15] Z. Liu, K. Suenaga, P.J.F. Harris and S. Iijima, *Phys. Rev. Lett.* 102 (2009)  
26 015501.  
27  
28 [16] A.K. Geim and K.S. Novoselov, *Nature Materials* 6 (2007) p.183.  
29  
30 [17] A.K. Geim, *Science* 324 (2009) p.1530.  
31  
32 [18] N. Park and J. Ihm, *Phys. Rev. B* 62 (2000) p.7614.  
33  
34 [19] K. Umemoto, S. Saito, S. Berber and D. Tománek, *Phys. Rev. B* 64 (2001)  
35 193409.  
36  
37 [20] T. Kawai, S. Okada, Y. Miyamoto and A. Oshiyama, *Phys. Rev. B* 72 (2005)  
38 035428.  
39  
40 [21] T.W. Ebbesen and H. Hiura, *Advanced Materials* 7 (1995) p.582.  
41  
42 [22] P.M. Ajayan and B.I. Yakobson, *Nature* 441 (2006) p.818.  
43  
44 [23] N. Patra, B. Wang and P. Král, *Nano Letters* 9 (2009) p.3766.  
45  
46 [24] V.H. Crespi, *Nature* 462 (2009) p.858.  
47  
48 [25] S. Orimo, G. Majer, T. Fukunaga, A. Züttel, L. Schlapbach and H. Fujii, *Appl.*  
49 *Phys. Lett.* 75 (1999) p.3093.  
50  
51 [26] H. Tanaka, H. Kanoh, M. El-Merraoui, W.A. Steele, M. Yudasaka, S. Iijima  
52 and K. Kaneko, *J. Phys. Chem. B* 108 (2004) p.17457.  
53  
54  
55  
56  
57  
58  
59  
60

- 1  
2  
3 [27] G.K. Dimitrakakis, E. Tylianakis and G.E. Froudakis, Nano Letters 8 (2008)  
4 p.3166.  
5  
6  
7 [28] M.D. Stoller, S.J. Park, Y.W. Zhu, J.H. An and R.S. Ruoff, Nano Letters 8  
8 (2008) p.3498.  
9  
10 [29] G.X. Wang, X.P. Shen, J. Yao and J. Park, Carbon 47 (2009) p.2049.  
11  
12

### 13 14 15 **Figure Captions** 16

- 17  
18  
19 Figure 1 (a) Low magnification micrograph of carbon from fresh graphite rod.  
20 (b) Micrograph at same magnification showing transformation in  
21 structure following arc-discharge.  
22  
23  
24 Figure 2 (a), (b) Typical structures found in carbon following arc-discharge.  
25  
26  
27  
28 Figure 3 Bilayer graphene structure, apparently hollow with single-walled  
29 nanoparticle inside (arrowed).  
30  
31  
32  
33 Figure 4 Faceted bilayer graphene structure with enlarged region showing small  
34 fullerene particle attached to apex.  
35  
36  
37  
38 Figure 5 Schematic illustration of transformation of folded graphene sheets into  
39 hollow structure.  
40  
41  
42  
43  
44  
45  
46  
47  
48  
49  
50  
51  
52  
53  
54  
55  
56  
57  
58  
59  
60

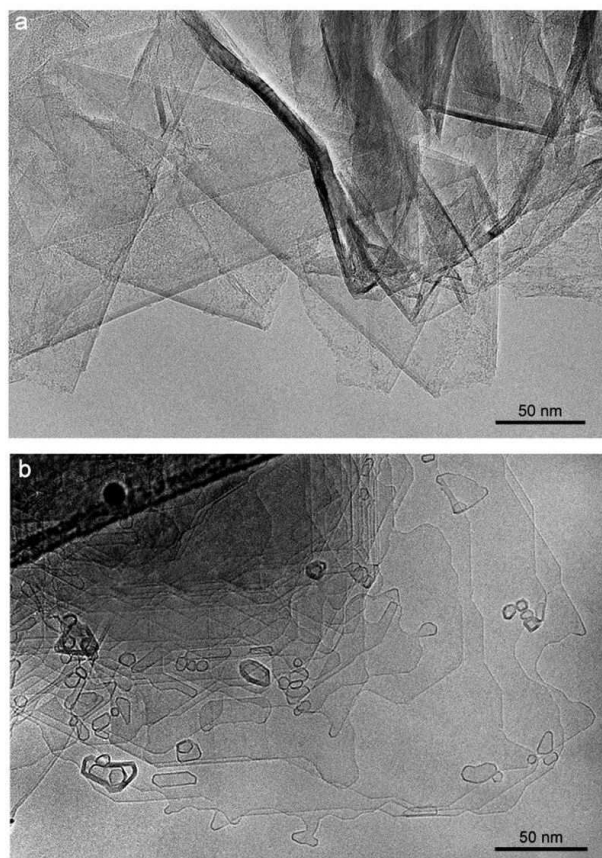


Fig. 1

(a) Low magnification micrograph of carbon from fresh graphite rod. (b) Micrograph at same magnification showing transformation in structure following arc-discharge.  
179x287mm (139 x 139 DPI)

1  
2  
3  
4  
5  
6  
7  
8  
9  
10  
11  
12  
13  
14  
15  
16  
17  
18  
19  
20  
21  
22  
23  
24  
25  
26  
27  
28  
29  
30  
31  
32  
33  
34  
35  
36  
37  
38  
39  
40  
41  
42  
43  
44  
45  
46  
47  
48  
49  
50  
51  
52  
53  
54  
55  
56  
57  
58  
59  
60

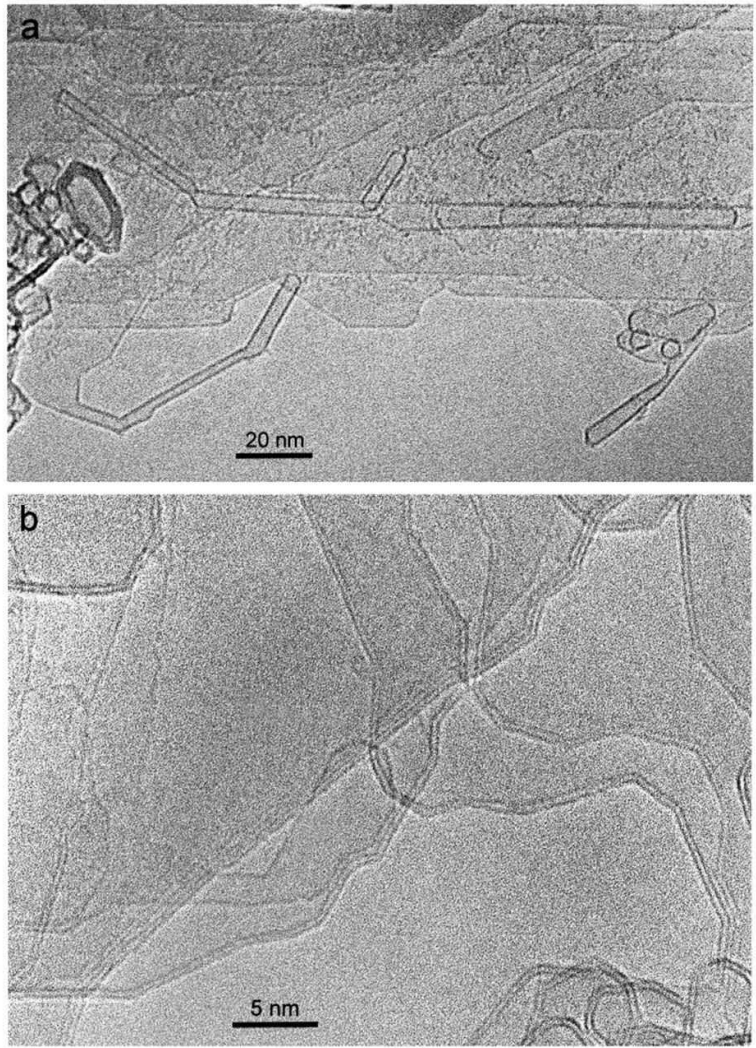


Fig. 2

Typical structures found in carbon following arc-discharge.  
199x266mm (139 x 139 DPI)

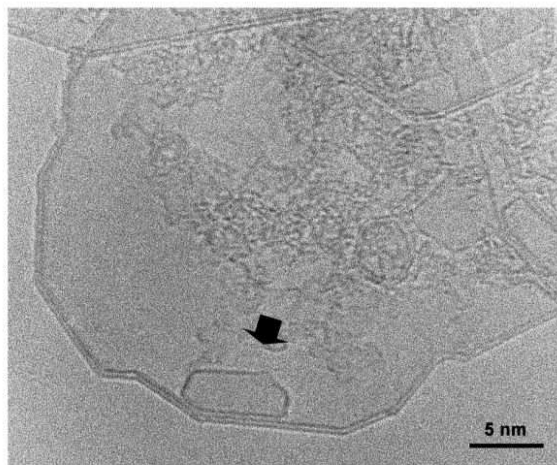


Fig. 3

Bilayer graphene structure, apparently hollow with single-walled nanoparticle inside (arrowed).  
169x226mm (139 x 139 DPI)



1  
2  
3  
4  
5  
6  
7  
8  
9  
10  
11  
12  
13  
14  
15  
16  
17  
18  
19  
20  
21  
22  
23  
24  
25  
26  
27  
28  
29  
30  
31  
32  
33  
34  
35  
36  
37  
38  
39  
40  
41  
42  
43  
44  
45  
46  
47  
48  
49  
50  
51  
52  
53  
54  
55  
56  
57  
58  
59  
60

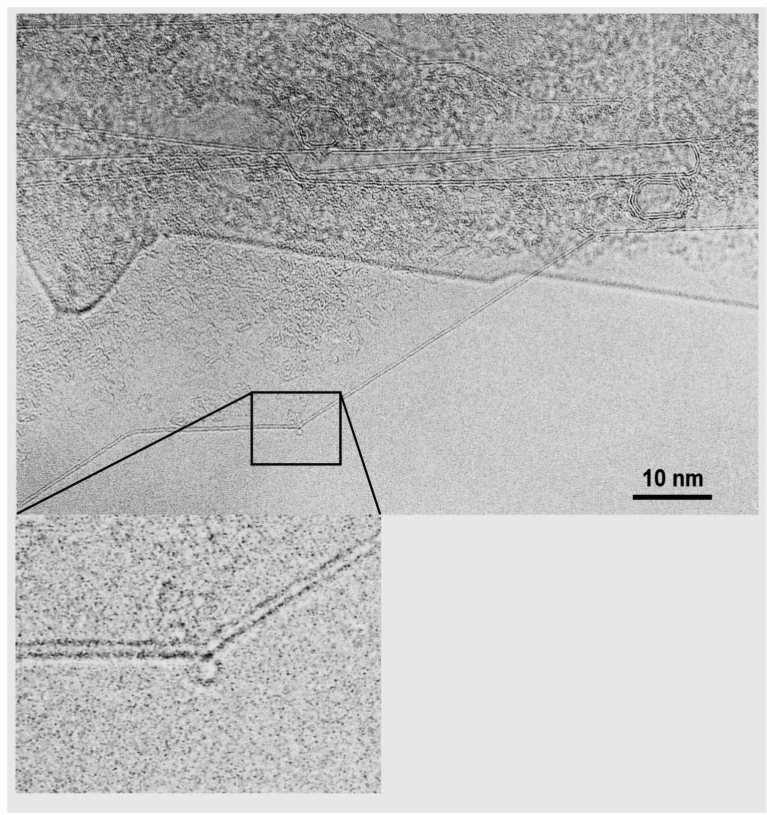


Fig. 4

Faceted bilayer graphene structure with enlarged region showing small fullerene particle attached to apex.  
180x180mm (281 x 281 DPI)

AM

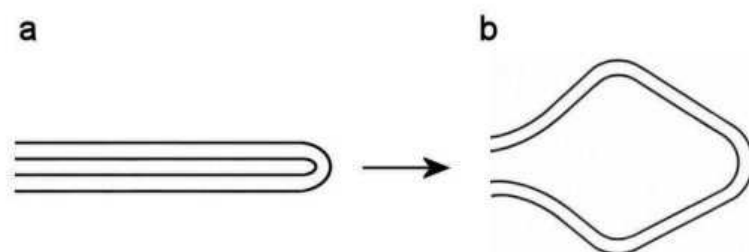


Fig. 5

Schematic illustration of transformation of folded graphene sheets into hollow structure.  
110x146mm (139 x 139 DPI)