



HAL
open science

Fine tuning of emission through the engineering of colloidal crystals

Jean-François Dechézelles, Tanguy Aubert, Fabien Grasset, Stéphane Cordier, Carlos Barthou, Catherine Schwob, Agnès Maître, Renaud A. L. Vallée, Henri Cramail, Serge Ravaine

► **To cite this version:**

Jean-François Dechézelles, Tanguy Aubert, Fabien Grasset, Stéphane Cordier, Carlos Barthou, et al.. Fine tuning of emission through the engineering of colloidal crystals. *Physical Chemistry Chemical Physics*, 2010, 12 (38), pp.11993-11999. 10.1039/c0cp00129e . hal-00679135

HAL Id: hal-00679135

<https://hal.science/hal-00679135v1>

Submitted on 22 Oct 2021

HAL is a multi-disciplinary open access archive for the deposit and dissemination of scientific research documents, whether they are published or not. The documents may come from teaching and research institutions in France or abroad, or from public or private research centers.

L'archive ouverte pluridisciplinaire **HAL**, est destinée au dépôt et à la diffusion de documents scientifiques de niveau recherche, publiés ou non, émanant des établissements d'enseignement et de recherche français ou étrangers, des laboratoires publics ou privés.

Fine tuning of emission through the engineering of colloidal crystals

Jean-François Dechézelles¹, Tangi Aubert², Fabien Grasset², Stéphane Cordier², Carlos Barhou³, Catherine Schwob³, Agnès Maître³, Renaud A. L. Vallée¹, Henri Cramail⁴ and Serge Ravaine^{1,*}

¹ *Université Bordeaux I, Centre de Recherche Paul Pascal, 115 avenue Dr Schweitzer, 33600 Pessac, France*

² *Université de Rennes 1, Unité Science Chimiques de Rennes, UMR 6226 CNRS-URI, Campus de Beaulieu, CS74205, F-35042 Rennes cedex, France*

³ *Institut des NanoSciences de Paris, UMR – CNRS 7588, Université Pierre et Marie Curie, Campus Boucicaut, 140 rue de Lourmel, 75015, France*

⁴ *Université Bordeaux I, Laboratoire de Chimie des Polymères Organiques, UMR 5629 CNRS – ENSCPB, 16 avenue Pey-Berland, 33607 Pessac, France*

* Corresponding author. Tel.: +33-556-84-56-67; fax: +33-556-84-56-00.

E-mail address: ravaine@crpp-bordeaux.cnrs.fr.

Abstract

We describe the preparation and characterization of photonic colloidal crystals from silica spheres with incorporated luminescent $[\text{Mo}_6\text{Br}_{14}]^{2-}$ cluster units. These structures exhibit strong angle-dependent luminescent properties. The incorporation of one or several planar defects in the periodic structures gives rise to the creation of a pass band in the stopband. In the energy range of this pass band, an increase of the emission intensity has been found.

Introduction

Photonic crystals (PCs) are a class of artificial structures with a periodic dielectric function in one, two, or three dimensions, in which the propagation of electromagnetic waves within a certain frequency band is forbidden. This forbidden frequency band has been dubbed photonic band gap (PBG). The position, width, depth, and shape of the PBG strongly depend on the periodicity, symmetry properties, dielectric constant contrast, and internal lattice structure of the unit cell. There is a common belief that PCs will perform many functions with light that ordinary crystals do with electrons.

Various important scientific and engineering applications such as control of spontaneous emission,¹⁻¹¹ zero-threshold lasing,¹² very sharp bending of light,¹³⁻¹⁴ light-emitting diodes,¹⁵⁻¹⁶ and so on, have been demonstrated by utilizing the photonic bandgap and/or light-emitters. Especially, a stopband, i.e. an incomplete photonic bandgap, can inhibit light propagation in a certain direction for a given frequency. Many groups have reported that PCs can modify significantly the emission characteristics of emitters (organic dyes,^{5,17} semiconductors,^{7,18} rare earth doped particles,¹⁹⁻²⁰ etc.) as the emission wavelength of the optically-active material overlaps the stopband. In most of these studies, the emitters have been incorporated within pre-fabricated PCs owing to a simple infiltration process. As the efficiency of controlled emission is highly dependent on the organization of the PCs, which may get disturbed by the solvent used, and the homogeneous infiltration of the dyes, we chose to incorporate the emitters in the silica particles themselves, which were thus used to fabricate luminescent colloidal crystals following the strategy reported by only a few groups.^{10,21-22}

Moreover, more emphasis in the PCs research field is placed on the incorporation of point, channel, and planar defects within the PCs structures for the creation of localized points and pathways for photons. With regard to the planar defects, which can be introduced within PCs by chemical vapor deposition,²³⁻²⁴ spin-coating,²⁵⁻²⁶ or the Langmuir-Blodgett (LB)

technique,²⁷⁻³¹ the emergence of a localized state for photons within the stopband, known as a defect mode, has been revealed. The obtained heterostructures present a dip, also called pass band, inside the stop band in the extinction spectrum. As far as we know, there is only one report on the spectral narrowing of emission in self-assembled colloidal photonic superlattices, though no clear effect of the pass band was observed in the fluorescence emission spectrum.³² This situation motivated us to investigate the influence of the introduction of one or several defect layers inside a 3D colloidal crystal on the emission spectrum of the incorporated emitters.

In this paper, we present a study of stop band / pass band effects on spontaneous emission of $[\text{Mo}_6\text{Br}_{14}]$ clusters-doped silica particles organized in 3D colloidal crystals. Let us recall that $[(\text{Mo}_6\text{L}_8^i)\text{L}_6^a]$ cluster units (Figure 1a, L = halogen and or chalcogen), constitute the basic building blocks in molybdenum octahedral cluster chemistry. The Mo_6 cluster is face-capped by eight inner ligands (L^i) and is additionally bonded to six apical ligands (L^a).³³⁻³⁴ The physical properties of Mo_6 solid-state compounds are related to the number of electrons available for metal–metal bonding within the cluster (valence electron count, VEC). Mo-centered electrons are located on twelve metal–metal bonding molecular orbitals of the molecular orbital diagram. Their full occupation leads to a closed-shell configuration with a VEC of 24.³⁵ Using high temperature synthesis, it turns out that halogen ligands favor the formation of solid-state molecular compounds based on $[\text{Mo}_6\text{X}_8^i\text{X}_6^a]^{2-}$ (X = Cl, Br, I) units with VEC values of 24 that can be discrete or poorly interconnected within the solid. The dissolution of inorganic solid-state halide precursors affords nanometric $[\text{Mo}_6\text{X}_{14}]^{2-}$ anionic units that exhibit interesting structural, photophysical, and redox properties that can be used for the formation and organization of supramolecular assemblies as well as hybrid materials.³⁶⁻³⁹ For instance, the large emission region of the $[\text{Mo}_6\text{X}_{14}]^{2-}$ anion in the red and near infrared (580–900 nm)⁴⁰⁻⁴² is particularly interesting for biotechnology applications. In

this frame, some of us recently prepared by water in oil microemulsion synthesis luminescent $\text{Cs}_2\text{Mo}_6\text{X}_{14}@/\text{SiO}_2$ and bifunctional luminescent magnetic $\text{Fe}_2\text{O}_3\text{-Cs}_2\text{Mo}_6\text{X}_{14}@/\text{SiO}_2$ nanoparticles containing $[\text{Mo}_6\text{X}_{14}]^{2-}$ unit as red inorganic dye.⁴³⁻⁴⁴ $\text{Cs}_2\text{Mo}_6\text{Br}_{14}$ precursors were encapsulated in silica by a classical sol-gel synthetic procedure and the obtained colloidal spheres were organized by the LB technique to elaborate 3D colloidal crystals. Heterostructures containing one or three planar defects made of silica spheres with a different size were also fabricated. We clearly observed that the emission of the incorporated light sources was inhibited by the presence of a stop band and was enhanced in the spectral region of a pass band.

Experimental

$\text{Cs}_2\text{Mo}_6\text{Br}_{14}$ clusters synthesis

The $\text{Cs}_2\text{Mo}_6\text{Br}_{14}$ ternaries were synthesized from a stoichiometric amount of CsBr and MoBr₂ binary halides according to the procedure described in the literature.⁴⁵⁻⁴⁶

Fabrication of the $\text{Cs}_2\text{Mo}_6\text{Br}_{14}@/\text{SiO}_2$ colloidal particles

$\text{Cs}_2\text{Mo}_6\text{Br}_{14}@/\text{SiO}_2$ spheres with a mean diameter of 270 ± 15 nm and 330 ± 15 nm were synthesized following the well-known Stöber-Fink-Bohn method.⁴⁷ As an example, for the synthesis of the 330 nm spheres, 100 mg of $\text{Cs}_2\text{Mo}_6\text{Br}_{14}$ clusters, 195 ml of absolute ethanol (Prolabo), 11 ml of ammonia (29 % in water, J.T. Baker), 29 ml of water were introduced in a 500 mL three-neck round flask equipped with a refrigerating system and stirred at 40°C at 400 rpm to homogenize. 16.5 ml of tetraethoxysilane (TEOS, 99%) (Fluka) were then introduced and the solution was left under stirring during 24 hours. A transmission electron microscopy (TEM) picture of the 270 nm $\text{Cs}_2\text{Mo}_6\text{Br}_{14}@/\text{SiO}_2$ spheres is shown in Figure 1b. The good monodispersity in size of the particles can be seen. Nevertheless, the $\text{Mo}_6\text{Br}_{14}$ units

cannot be distinguished inside the SiO₂ particles due to the strong absorption of the mineral particles.

The above suspension of 330 nm particles was used as a seed for the growth of silica in order to get particles with a final diameter of 460 ± 25 nm. Typically, 250 mL of the suspension of seeds were introduced in a 500 mL three-neck round flask. A solution of 6.5 mL of TEOS diluted in 25 mL of absolute ethanol was added dropwise at an addition rate of 2 mL.h⁻¹ under stirring at 400 rpm and at room temperature. Synthesis was carried out for 24 hours.

In order to use the Cs₂Mo₆Br₁₄@SiO₂ colloidal beads as building units to elaborate colloidal crystals by the LB technique, their surface was functionalized with aminopropyltriethoxysilane (99%, Aldrich) as previously described.⁴⁸

Fabrication of the colloidal crystals

Multilayer colloidal crystals were deposited by the Langmuir-Blodgett technique onto glass substrates (24 mm x 60 mm). Details of the fabrication have been already published.⁴⁸ 3D colloidal crystals including one or three defect layers of particles of larger size were elaborated by alternately depositing 5 layers of 330 nm Cs₂Mo₆Br₁₄@SiO₂ particles (host particles), and one layer of 460 nm Cs₂Mo₆Br₁₄@SiO₂ spheres (guest spheres).

The 3D heterostructures are stable over years and can be manipulated without any damage if one takes care not to rub them up.

Characterizations

The size of the colloidal particles was determined statistically by analyzing TEM pictures taken with a Hitachi H-600 microscope.

Scanning electron microscopy (SEM) observations of the photonic crystals were performed with a JEOL JSM-6700F scanning electron microscope operating at 10 kV. The specimens were carbon-coated and simply cut into pieces using a glass cutter prior to examination.

Ultra-violet visible (UV-vis) extinction spectra were obtained by recording the transmitted intensity at normal incidence on a UV4 Spectrometer from Unicam. The extinction spectrum is defined as $1 - T$ where T is the transmitted intensity spectrum normalized to the incident intensity spectrum on the sample. For specular reflection, samples were illuminated with a fibered and collimated halogen source covering the whole 350-800 nm spectral range. The reflected light was collected by a second optical fiber symmetric to the first one. The fibers were mounted on rotating stages allowing for a precise selection of the incident and collection angles. The light spot on the opal had a size of 4 mm^2 (at 20° incidence) and the distance between the sample and the optical fiber was 10 cm. As for the extinction spectra, specular reflexion spectra are normalized to the incident light spectrum.

The photoluminescence (PL) emission spectra were obtained by exciting the samples by the 337 nm nitrogen laser line (Laser Photonics LN 1000, 1.4 mJ pulse energy, 0.6 ns pulse duration). The emitted light from the sample, collected at 8 cm by an optical fiber on the same side as the excitation, was analyzed with a Jobin-Yvon Spectrometer HR460 and a multichannel CCD detector (2000 pixels). The spectrometer was corrected for wavelength dependence of the transmission of the polychromator and the sensitivity of the detector. This setup has a resolution of 0.3 nm/point for a $30 \text{ }\mu\text{m}$ slit.

Simulations

Finite-difference time-domain (FDTD) simulations⁴⁹ of the extinction, reflection spectra of the various photonic architectures experimentally investigated were performed, integrated in a freely available software package with sub-pixel smoothing for increased accuracy.⁵⁰ The computational cell, in which the incoming wave propagates along the z direction at normal

incidence, has been implemented with periodic boundary conditions in x and y directions and perfectly matched layers (PMLs) in the z direction. The resolution of the grid has been refined such that the convergence of the results was ensured. To be in close agreement with the experimental conditions, the opals have been represented by monodisperse spheres of given size (330 nm) and dielectric constant $\epsilon = 2.1$ arranged along a face-centered cubic (fcc) lattice. The lattice has been truncated to 25 (for Figure 2c) or 10 (for Figure 3b) planes normal to the direction [111], and the resulting crystal was set on a substrate with a dielectric constant of 2.3, which corresponds to the glass slides that were used, extending to the PMLs in the z direction. In case of a defect layer of larger spheres (with a diameter of 1.5 larger than the host particles) has been introduced between two stacks of 5 layers of host particles on the experimental side, we represented this layer on the simulation side by a bloc of the appropriate thickness with an effective refractive index $n_e = 1.35$.

Results and discussion

The luminescence properties of the $\text{Cs}_2\text{Mo}_6\text{Br}_{14}@\text{SiO}_2$ particles were first analyzed. Figure 2a shows the room-temperature PL spectra measured under 337 nm excitation of aqueous solutions of the particles at various concentrations. The spectra show a broad band centered around 705 nm and exhibit a similar shape to those of the starting compounds,⁴³ evidencing that the emission properties of clusters are preserved when incorporated inside the silica particles.

The photonic crystals fabricated with the $\text{Cs}_2\text{Mo}_6\text{Br}_{14}@\text{SiO}_2$ particles display a strong iridescence in the visible region of the spectrum, which indicates the presence of a photonic stop band due to the regular ordering of the building spherical units. In fact, the good crystalline quality of a crystal made of 25 layers of 330 nm particles can be seen on the SEM side view shown in Figure 2b. Figure 2c shows the optical extinction / reflection spectra of the

crystal (solid lines), taken at various incidence angles (from 0° to 40°). One main peak, which shifts to shorter wavelength when the angle of incidence is increased, is observed according to Bragg-Snell diffraction law:

$$\lambda_{\max} = 2\sqrt{\frac{2}{3}}D\sqrt{n_e^2 - \sin^2 \alpha}$$

where λ_{\max} is the Bragg diffracted wavelength, α is the angle between the [111] direction and the incident beam, D is the diameter of the colloidal particles and n_e is the effective refractive index of the crystal at the wavelength of interest. Spectra were simulated using the FDTD method. Calculated spectra (dashed lines) are plotted along the experimental ones in Figure 2c. Note that the vertical axis is arbitrarily scaled and the spectra are arbitrarily shifted in order to clearly distinguish them, as a function of angle. A good agreement between theoretical and experimental data can be observed.

The successful engineering of the crystal is clearly shown in Figure 2c, as the pseudo-gap maximum overlaps completely ($\alpha = 0, 20, 25, 30^\circ$) or partially ($\alpha = 35^\circ$) the emission band of the $\text{Cs}_2\text{Mo}_6\text{Br}_{14}@SiO_2$ particles, represented in the figure as a grey vertical rectangle. Therefore, one should expect the emission spectrum changes when the detection angle is modified. In order to verify this point, we conducted an angle-resolved emission study during which the excitation wavelength was chosen to be 337 nm, which is outside the stop band of the crystal in order to penetrate well into the sample and interact with the emitters. Figure 2d shows the emission spectra recorded at six different detection angles (solid lines), while the experimental extinction / reflection spectra of the sample are also shown (dashed lines). A profound dip in the emission band is observed. Its position shifts to shorter wavelengths when α increases, coinciding with the spectral position of the stopband. This indicates that an inhibition of the light emission from the $\text{Cs}_2\text{Mo}_6\text{Br}_{14}@SiO_2$ particles occurs due to a low density of photonic states in the wavelength range of the stopband. A maximum inhibition of

the luminescent emission of $\sim 35\%$ was estimated at $\alpha = 0^\circ$, whereas the emission band of the $\text{Cs}_2\text{Mo}_6\text{Br}_{14}@\text{SiO}_2$ particles is unaffected at $\alpha = 40^\circ$ as the stopband is brought completely out of the emission range.

In order to investigate the influence of a pass band on the emission spectrum of the $\text{Cs}_2\text{Mo}_6\text{Br}_{14}@\text{SiO}_2$ particles, we exploited our capability to build multilayer colloidal crystals in a controlled manner with the Langmuir-Blodgett technique. We engineered a colloidal crystal composed by one layer of 460 nm $\text{Cs}_2\text{Mo}_6\text{Br}_{14}@\text{SiO}_2$ spheres embedded between two stacks of five layers of 330 nm $\text{Cs}_2\text{Mo}_6\text{Br}_{14}@\text{SiO}_2$ particles. The crystal's structure can be described as $(330)_5/(460)_1/(330)_5$ by listing the sphere size from bottom to top. Both the defect layer and the good crystalline quality of the sample can be seen on the SEM side view shown in Figure 3a. The insertion of such a defect layer induces the appearance of localized states for photons within the L pseudo-gap of the host particles structure. Accordingly, a pass band is created within the stop band. On the basis of the particle diameters of the guest and host particles used for the preparation of the sample, the pass band position is expected to overlap the emission profile of the colloidal building units. This has been verified experimentally by recording the extinction / reflection spectra of the sandwich-like crystal as a function of angle while tilting the sample over the ΓL direction. Indeed, Figure 3b shows that these spectra (solid lines) exhibit a dip within the pseudogap, which shifts to the blue and passes through the emission range of the $\text{Cs}_2\text{Mo}_6\text{Br}_{14}@\text{SiO}_2$ particles as α increases. Calculated spectra (dashed lines) are also plotted along the experimental ones in Figure 3b. Here again, the simulations fit the experimental ones accurately in all cases. Figure 3c shows the emission (solid lines) and extinction / reflection (dashed lines) spectra of the sandwich-like crystal recorded at six different detection angles. For $0^\circ \leq \alpha \leq 35^\circ$, both an inhibition of the emission in the dielectric and air band regions and an exaltation within the pass band are clearly

observed, as the result of the redistribution of the photonic local density of states. Only a weak shoulder in the PL spectrum around 650 nm is visible for $\alpha = 40^\circ$, as a result of the blue shifting of the pass band towards the low wavelength edge of the emission band induced by the tilting of the sample. To quantify the effects of the $(330)_5/(460)_1/(330)_5$ crystal on the emission spectra, we took the ratio of the emission spectra to the spectrum recorded from a reference sample made of 10 layers of 270 nm $\text{Cs}_2\text{Mo}_6\text{Br}_{14}@\text{SiO}_2$ spheres, which exhibits a photonic band gap at 595 nm (not shown). We thus obtained the relative intensity spectra displayed in Figure 3d. For $\alpha = 0^\circ$, the data clearly show a 15% attenuation of the emission in the dielectric and air band regions as well as a 8% enhanced emission in the pass band region. The simultaneous observation of attenuation and enhancement means that the effect of the PC is not a simple filter action.

We further took advantage of the versatility of the Langmuir-Blodgett technique by engineering a photonic heterostructure made by alternated deposition of stacks (A) made of five layers of 330 nm $\text{Cs}_2\text{Mo}_6\text{Br}_{14}@\text{SiO}_2$ particles with one monolayer (B) of 460 nm $\text{Cs}_2\text{Mo}_6\text{Br}_{14}@\text{SiO}_2$ particles. Figure 4a shows a SEM side view of a $\text{A}(\text{BA})_3$ heterostructure. The thickness of each stack is controlled at the layer level as the number of deposited layers matches perfectly with the predefined value of transfer cycles. The overall thickness of the sample is uniform despite the presence of defect layers B of larger silica particles which periodically separate the A substructures. The periodic alternation between A and B substructures gives rise to a superlattice, whose periodic parameter corresponds to the sum of the thicknesses of stacks A and B. We have recently shown that the pass band becomes wider as the layering is repeated.³⁰ The comparison of the extinction spectra of $\text{A}(\text{BA})_1$ and $\text{A}(\text{BA})_3$ heterostructures taken at normal incidence ($\alpha = 0^\circ$) and shown in Figure 4b confirms this assertion, as the width of the defect state of the latter is larger than for the $\text{A}(\text{BA})_1$ crystal. In agreement with our previous observations,³⁰ weak oscillations are also visible inside the

passband of the $A(BA)_3$ sample. They can be assimilated to minibands, which result from the coupling of the individual defect modes in the heterostructure. Figure 4b further illustrates the influence of the structure of the colloidal crystals on the emission characteristics of their building units. An enhancement of the emission is observed between 700 nm and 770 nm in the PL spectrum of the $A(BA)_3$ heterostructure, *i.e.* in the whole spectral zone of the pass band. One should also note a slight inhibition of the emission at 730 nm and 765 nm, which correspond to the spectral positions of the minibands, which thus act as stopbands.

Conclusions

In summary, we have engineered colloidal crystals from silica spheres with incorporated luminescent $[Mo_6Br_{14}]^{2-}$ cluster units. An inhibition of the emission intensity from the light sources was observed in the spectral region of the stop band, which was found to nicely correspond and follow the Bragg-Snell law as the angle between the [111] direction and the incident beam was varied. Heterostructures containing one or three planar defects displayed increased emission in the spectral region of the pass band. The 3D photonic colloidal structures investigated here are very promising for both basic and applied research related to the confinement and exaltation of spontaneous emission in given frequency ranges and thus are good candidates for low-threshold and/or single mode photonic crystal lasers.

Acknowledgements

The authors thank B. Agricole (CRPP) and E. Sellier (CREMEM, Talence) for Langmuir-Blodgett experiments and SEM observations, respectively.

References

1. S. Fan, P. R. Villeneuve, J. D. Joannopoulos and E. F. Schubert, *Phys. Rev. Lett.*, 1997, **78**, 3294.
2. E. P. Petrov, V. N. Bogomolov, I. I. Kalosha and S. V. Gaponenko, *Phys. Rev. Lett.*, 1998, **81**, 77.
3. S. V. Gaponenko, V. N. Bogomolov, E. P. Petrov, A. M. Kapitonov, D. A. Yarotsky, I. I. Kalosha, A. A. Eychmueller, A. L. Rogach, J. McGilp, U. Woggon and F. Gindele, *J. Lightwave Technol.*, 1999, **17**, 2128.
4. S. V. Gaponenko, V. N. Bogomolov, E. P. Petrov, A. M. Kapitonov, A. A. Eychmueller, A. L. Rogach, I. I. Kalosha, F. Gindele and U. Woggon, *J. Lumin.*, 2000, **87**, 152.
5. L. Bechger, P. Lodahl and W. L. Vos, *J. Phys. Chem. B*, 2005, **109**, 9980.
6. M. Megens, J. E. G. J. Wijnhoven, A. Lagendijk and W. L. Vos, *J. Opt. Soc. Am. B*, 1999, **16**, 1403.
7. P. Lodahl, A. F. van Driel, I. S. Nikolaev, A. Irman, X. Overgaag, D. Vanmaekelbergh and W. L. Vos, *Nature*, 2004, **430**, 654.
8. A. F. Koenderink and W. L. Vos, *Phys. Rev. Lett.*, 2003, **91**, 213902.
9. R. C. Schroden, M. Al-Daous and A. Stein, *Chem. Mater.*, 2001, **13**, 2945.
10. F. Fleischhaker and R. Zentel, *Chem. Mater.*, 2005, **17**, 1346.
11. M. Müller, R. Zentel, T. Maka, S. G. Romanov and C. M. Sotomayor Torres, *Chem. Mater.*, 2000, **12**, 2508.
12. L. K. Teh, C. C. Wong, H. Y. Yang, S. P. Lau and S. F. Yu, *Appl. Phys. Lett.*, 2007, **91**, 161116.
13. A. Chutinan and S. Noda, *Appl. Phys. Lett.*, 1999, **75**, 3739.

14. S. Y. Lin, E. Chow, V. Hietala, P. R. Villeneuve and J. D. Joannopoulos, *Science*, 1998, **282**, 274.
15. M. Boroditsky, T. F. Krauss, R. Coccioli, R. Vrijen, R. Bhat and E. Yablonovitch, *Appl. Phys. Lett.*, 1999, **75**, 1036.
16. Y. R. Do, Y. C. Kim, Y. W. Song, C. Cho, H. Jeon, Y. J. Lee, S. H. Kim and Y. H. Lee, *Adv. Mater.*, 2003, **15**, 1214.
17. B. Kolaric, K. Baert, M. Van der Auweraer, R. A. L. Vallée and K. Clays, *Chem. Mater.*, 2007, **19**, 5547.
18. Y.A. Vlasov, K. Luterova, I. Pelant, B. Honerlage and V. N. Astratov, *Appl. Phys. Lett.*, 1997, **71**, 1616.
19. A. Chiappini, C. Armellini, A. Chiasera, M. Ferrari, Y. Jestin, M. Mattarelli, M. Montagna, E. Moser, G. Nunzi Conti, S. Pelli, G. C. Righini, M. Clara Goncalves and R. M. Almeida, *J. Non-Cryst. Solids*, 2007, **353**, 674.
20. Y.-S. Lin, Y. Hung, H.-Y. Lin, Y.-H. Tseng, Y.-F. Chen and C.-Y. Mou, *Adv. Mater.*, 2007, **19**, 577.
21. R. V. Nair, R. Vijaya, K. Kuroda and K. Sakoda, *J. Appl. Phys.*, 2007, **102**, 123106.
22. Y. Li, T. Kunitake, S. Fujikawa and K. Ozasa, *Langmuir*, 2007, **23**, 9109.
23. E. Palacios-Lidon, J. F. Galisteo-Lopez, B. H. Juarez and C. Lopez, *Adv. Mater.*, 2004, **16**, 341.
24. N. Tétreault, A. Mihi, H. Miguez, I. Rodriguez, G. A. Ozin, F. Meseguer and V. Kitaev, *Adv. Mater.*, 2004, **16**, 346.
25. L. Wang, Q. Yan and X. S. Zhao, *Langmuir*, 2006, **22**, 3481.
26. R. Pozas, A. Mihi, M. Ocaña and H. Míguez, *Adv. Mater.*, 2006, **18**, 1183.
27. K. Wostyn, Y. Zhao, G. de Schaezen, L. Hellemans, N. Matsuda, K. Clays and A. Persoons, *Langmuir*, 2003, **19**, 4465.

28. Y. Zhao, K. Wostyn, G. de Schaetzen, K. Clays, L. Hellemans, A. Persoons, M. Szekeeres and R.A. Schoonheydt, *Appl. Phys. Lett.*, 2003, **82**, 3764.
29. P. Massé, S. Reculosa, K. Clays and S. Ravaine, *Chem. Phys. Lett.*, 2006, **422**, 251.
30. P. Massé, G. Pouclet and S. Ravaine, *Adv. Mater.*, 2008, **20**, 584.
31. P. Massé, R. A. L. Vallée, J.-F. Dechezelles, J. Rosselgong, E. Cloutet, H. Cramail, X. S. Zhao and S. Ravaine, *J. Phys. Chem. C*, 2009, **113**, 14487.
32. K. Baert, K. Song, R. A. L. Vallée, M. Van der Auweraer and K. Clays, *J. Appl. Phys.*, 2006, **100**, 123112.
33. H. Schaefer and H. G. Schnering, *Angew. Chem.* 1964, **76**, 833.
34. S. Cordier, K. Kirakci, D. Méry, C. Perrin and D. Astruc, *Inorganica Chimica Acta*, 2006, **359**, 1705.
35. T. Hughbanks and R. Hoffmann, *J. Am. Chem. Soc.*, 1983, **105**, 1150.
36. D. Mery, L. Plault, C. Ornelas, J. Ruiz, S. Nlate, D. Astruc, J. C. Blais, J. Rodrigues, S. Cordier, K. Kirakci and C. Perrin, *Inorg. Chem.*, 2006, **45**, 1156.
37. G. Prabusankar, Y. Molard, S. Cordier, S. Golhen, Y. Le Gal, C. Perrin, S. Kalal, J. F. Halet and L. Ouahab, *Eur. J. Inorg. Chem.*, 2009, **14**, 2153.
38. Y. Molard, F. Dorson, V. Cîrcu, T. Roisnel, F. Artzner and S. Cordier, *Angew. Chem. Int. ed.*, 2010, **49**, 3351.
39. B. Fabre, S. Cordier, Y. Molard, C. Perrin, S. Ababou-Girard and C. Godet, *J. Phys. Chem. C*, 2009, **113**, 17437.
40. A. W. Maverick and H. B. Gray, *J. Am. Chem. Soc.* 1981, **103**, 1298.
41. A. W. Maverick, J. S. Najdzionek, D. MacKenzie, D. G. Nocera and H. B. Gray, *J. Am. Chem. Soc.* 1983, **105**, 1878.
42. D. G. Nocera and H. B. Gray, *J. Am. Chem. Soc.* 1984, **106**, 824.

43. F. Grasset, F. Dorson, S. Cordier, Y. Molard, C. Perrin, A.-M. Marie, T. Sasaki, H. Haneda, Y. Bando and M. Mortier, *Adv. Mater.*, 2008, **20**, 143.
44. F. Grasset, Y. Molard, F. Dorson, S. Cordier, M. Mortier, V. Demange, C. Perrin, V. Marchi-Artzner and H. Haneda, *Chem. Commun.*, 2008, **39**, 4729.
45. K. Kirakci, S. Cordier and C. Perrin, *Z. Anorg. Allg. Chem.*, 2005, **631**, 411.
46. H. Schaefer, H. G. Schnering, J. Tillack, F. Kuhnen, H. Woehrle and H. Baumann, *Z. Anorg. Allg. Chem.*, 1967, **353**, 281.
47. W. Stöber, A. Fink and E. Bohn, *J. Colloid Interface Sci.*, 1968, **26**, 62.
48. S. Reculosa and S. Ravaine, *Chem. Mater.*, 2003, **15**, 598.
49. A. Taflove and S. C. Hagness, *Computational Electrodynamics: The Finite-Difference Time-Domain Method*, 3rd ed.; Artech House, Inc.: Norwood, MA, 2005.
50. A. Farjadpour, D. Roundy, A. Rodriguez, M. Ibanescu, P. Bermel, J. D. Joannopoulos, S. G. Johnson and G. Burr, *Opt. Lett.*, 2006, **31**, 2972.

Figures captions

Figure 1. a) Representation of a $\text{Mo}_6\text{L}_8\text{L}'_6$ cluster unit. The Mo_6 cluster is represented as a grey octahedron. Apical ligands (L^a) are in terminal positions and inner ligands (L^i) are in face-capping position; b) TEM image of the 270 nm $\text{Cs}_2\text{Mo}_6\text{Br}_{14}@\text{SiO}_2$ particles.

Figure 2. a) Concentration dependence of the photoluminescence spectra of the 330 nm $\text{Cs}_2\text{Mo}_6\text{Br}_{14}@\text{SiO}_2$ particles in water; b) SEM side view of a colloidal crystal composed of 25 layers of 330 nm $\text{Cs}_2\text{Mo}_6\text{Br}_{14}@\text{SiO}_2$ particles. c) Angle dependence of the extinction (at $\alpha = 0^\circ$) / reflection (for larger angles) experimental and simulated spectra of the engineered colloidal structure; d) Angle dependence of the extinction (at $\alpha = 0^\circ$) / reflection (for larger angles) and corresponding photoluminescence spectra of the engineered colloidal structure. In c), the grey rectangle represents the spectral range of the emission peak of the $\text{Cs}_2\text{Mo}_6\text{Br}_{14}@\text{SiO}_2$ particles.

Figure 3. a) SEM side view of a colloidal crystal composed by one layer of 460 nm $\text{Cs}_2\text{Mo}_6\text{Br}_{14}@\text{SiO}_2$ spheres embedded between two stacks of five layers of 330 nm $\text{Cs}_2\text{Mo}_6\text{Br}_{14}@\text{SiO}_2$ particles. b) Angle dependence of the extinction (at $\alpha = 0^\circ$) / reflection (for larger angles) experimental and simulated spectra of the engineered colloidal structure. c) Angle dependence of the extinction (at $\alpha = 0^\circ$) / reflection (for larger angles) and corresponding photoluminescence spectra of the engineered colloidal structure. d) Emission spectra of the $(330)_5/(460)_1/(330)_5$ crystal divided by the emission from a $(270)_{10}$ reference crystal. The downward arrows indicate the positions of the dielectric and air bands while the upward arrows indicate the positions of the pass band. In b), the grey rectangle represents the spectral range of the emission peak of the $\text{Cs}_2\text{Mo}_6\text{Br}_{14}@\text{SiO}_2$ particles.

Figure 4. a) SEM side view of a A(BA)₃ heterostructure. b) Experimental extinction (at $\alpha = 0^\circ$) (dashed lines) and photoluminescence spectra (solid lines) of the A(BA)₁ (black curves) and A(BA)₃ (grey curves) heterostructures. Spectra are vertically shifted for better clarity.

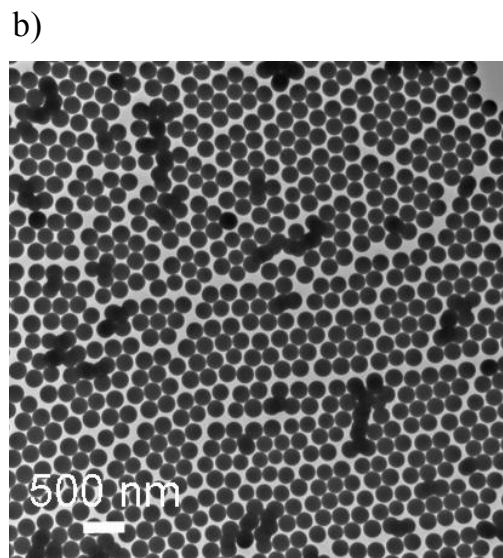
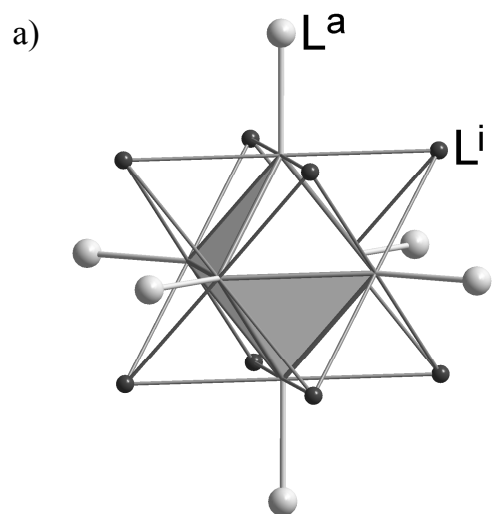


Figure 1.

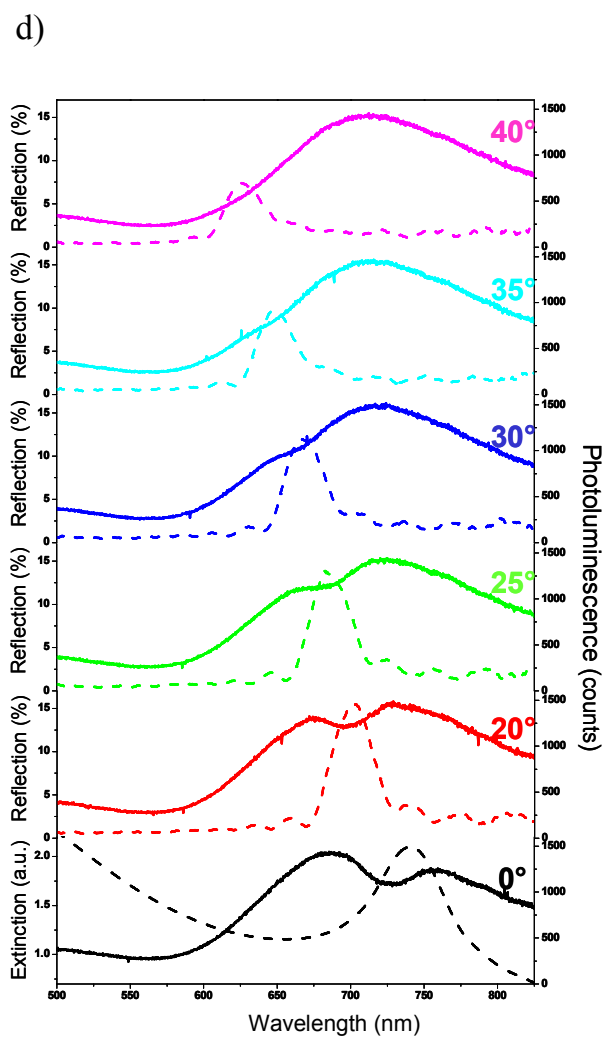
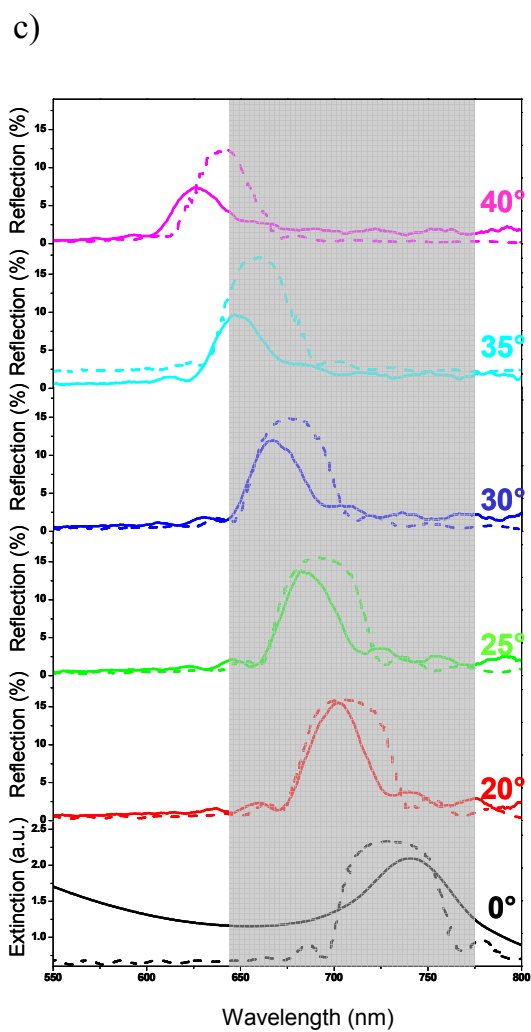
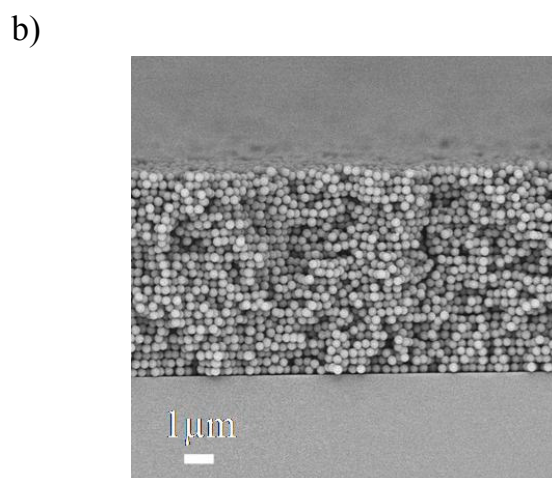
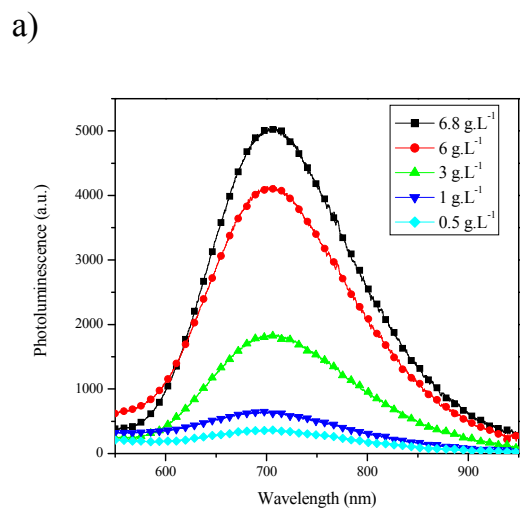
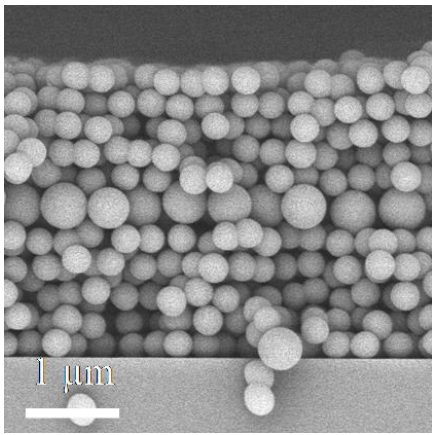


Figure 2.

a)



b)

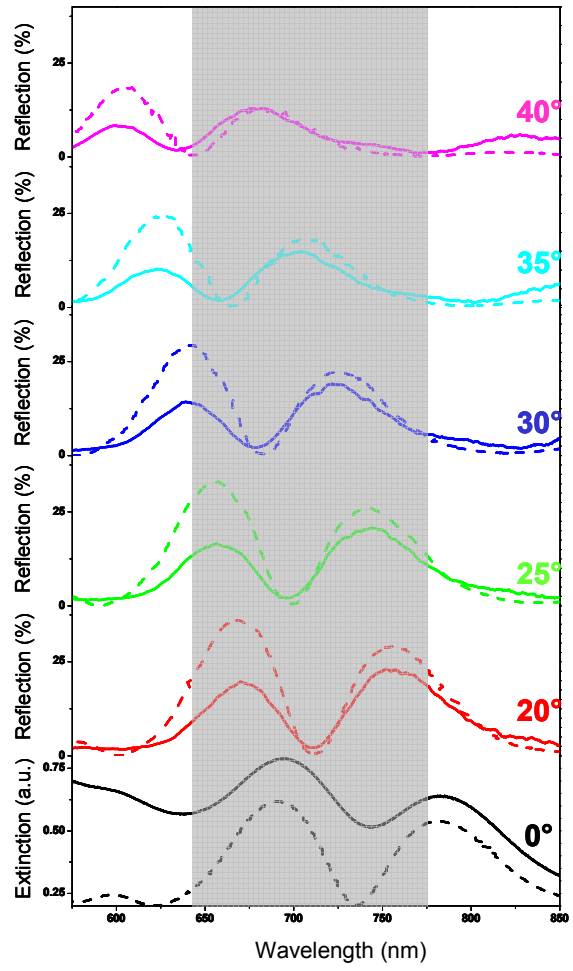


Figure 3

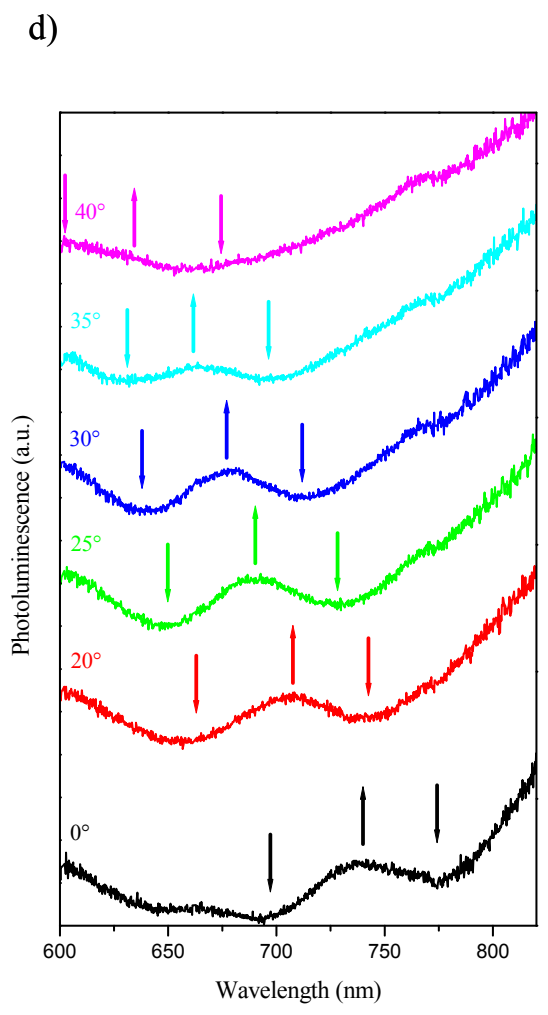
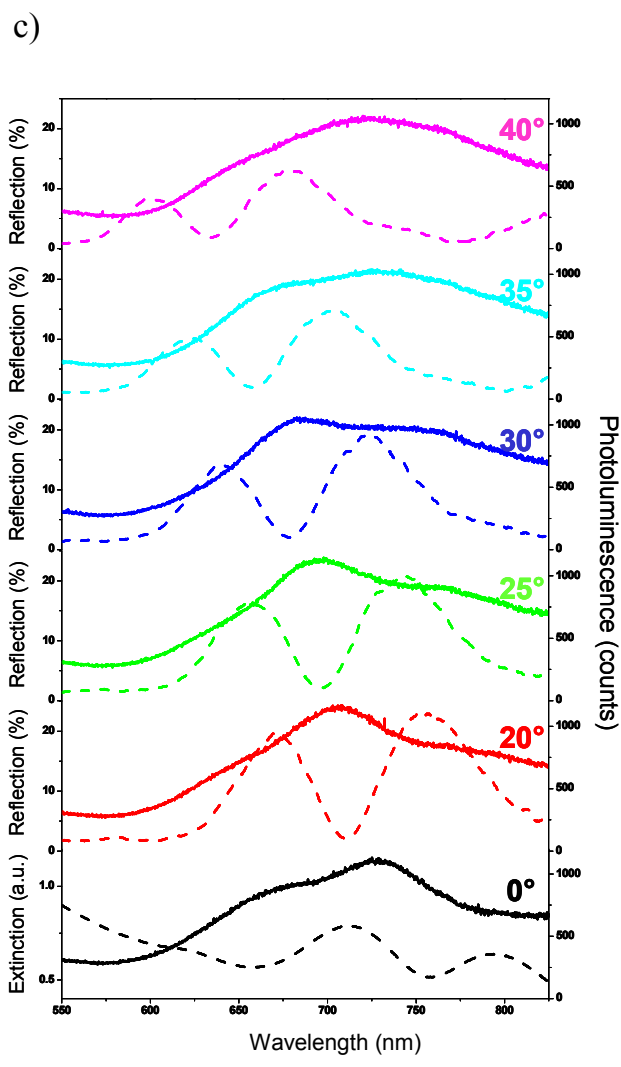
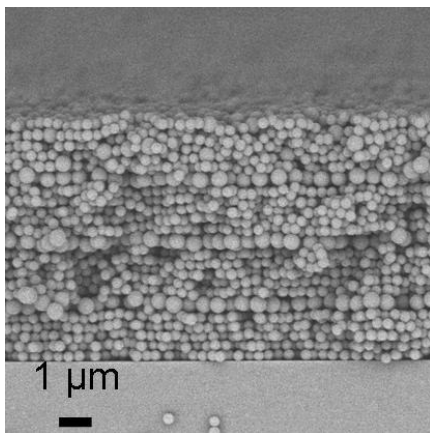


Figure 3.

a)



b)

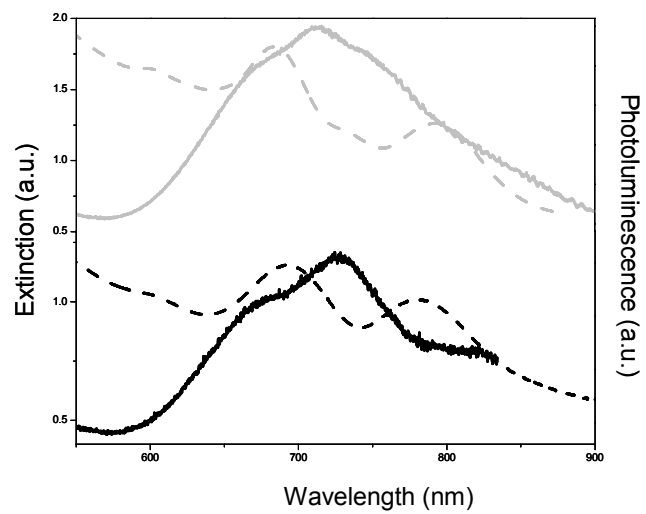


Figure 4.