



**HAL**  
open science

## A FEM comparative analysis of the thermal efficiency among floors made up of clay, concrete and lightweight concrete hollow blocks

J.J. del Coz Díaz, P.J. García Nieto, J. Domínguez Hernández, F.P. Álvarez Rabanal

► **To cite this version:**

J.J. del Coz Díaz, P.J. García Nieto, J. Domínguez Hernández, F.P. Álvarez Rabanal. A FEM comparative analysis of the thermal efficiency among floors made up of clay, concrete and lightweight concrete hollow blocks. *Applied Thermal Engineering*, 2010, 30 (17-18), pp.2822. 10.1016/j.applthermaleng.2010.07.024 . hal-00678804

**HAL Id: hal-00678804**

**<https://hal.science/hal-00678804>**

Submitted on 14 Mar 2012

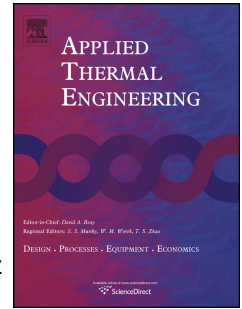
**HAL** is a multi-disciplinary open access archive for the deposit and dissemination of scientific research documents, whether they are published or not. The documents may come from teaching and research institutions in France or abroad, or from public or private research centers.

L'archive ouverte pluridisciplinaire **HAL**, est destinée au dépôt et à la diffusion de documents scientifiques de niveau recherche, publiés ou non, émanant des établissements d'enseignement et de recherche français ou étrangers, des laboratoires publics ou privés.

# Accepted Manuscript

Title: A FEM comparative analysis of the thermal efficiency among floors made up of clay, concrete and lightweight concrete hollow blocks

Authors: J.J. del Coz Díaz, P.J. García Nieto, J. Domínguez Hernández, F.P. Álvarez Rabanal



PII: S1359-4311(10)00307-8

DOI: [10.1016/j.applthermaleng.2010.07.024](https://doi.org/10.1016/j.applthermaleng.2010.07.024)

Reference: ATE 3183

To appear in: *Applied Thermal Engineering*

Received Date: 7 January 2010

Revised Date: 21 July 2010

Accepted Date: 25 July 2010

Please cite this article as: J.J. del Coz Díaz, G. Nieto, D. Hernández, F.P. Álvarez Rabanal. A FEM comparative analysis of the thermal efficiency among floors made up of clay, concrete and lightweight concrete hollow blocks, *Applied Thermal Engineering* (2010), doi: 10.1016/j.applthermaleng.2010.07.024

This is a PDF file of an unedited manuscript that has been accepted for publication. As a service to our customers we are providing this early version of the manuscript. The manuscript will undergo copyediting, typesetting, and review of the resulting proof before it is published in its final form. Please note that during the production process errors may be discovered which could affect the content, and all legal disclaimers that apply to the journal pertain.

# A FEM comparative analysis of the thermal efficiency among floors made up of clay, concrete and lightweight concrete hollow blocks

J. J. del Coz Díaz<sup>1,\*</sup>, P. J. García Nieto<sup>2</sup>, J. Domínguez Hernández<sup>3</sup>, F.P. Álvarez Rabanal<sup>1</sup>

<sup>1</sup>*Department of Construction, University of Oviedo, 33204 Gijón, Spain*

<sup>2</sup>*Department of Mathematics, University of Oviedo, 33007 Oviedo, Spain*

<sup>3</sup>*Department of Mechanical Engineering, University of Zaragoza, 50018 Zaragoza, Spain*

## Abstract

This paper presents a comparative nonlinear thermal analysis for a total of eighteen different in situ cast floors varying both the constituent materials of the hollow blocks (clay, concrete and lightweight concrete) and the shape and number of recesses (six different block types) using the finite element method (FEM). Based on the non-linear thermal analysis of the different configurations by FEM and considering both upward and downward heat flows, it is possible to choose the best candidate floor from the thermal point of view. Mathematically, the non-linearity is due to the radiation boundary condition inside the recesses of the blocks. The comparative analysis of the floors is carried out from the finite element analysis through the two important parameters: the average mass overall thermal efficiency and the equivalent thermal conductivity. Finally, the results and conclusions reached in this work are exposed.

*Keywords:* Hollow block; Finite element modelling; Non-linear complex heat transfer; Energy savings.

## 1. Introduction

In recent years, many researchers have studied the thermal behavior of the different construction elements in buildings, such as: walls, roofs, floors, windows and so on [1-7]. This study seeks responses to the following questions: what is the difference of the thermal performance when the number and shape of the block recesses is varied? And, what is the best constituent material of blocks to obtain the biggest energy savings?

It is evident that there are many differences between construction elements in building today [8]. However, to the best of our knowledge, there is a little information available concerning the thermal comparative behavior between the same or similar blocks made up of different constituent materials. Thus, two purposes of this study were proposed: firstly, this work provides the information through numerical studies that it is possible to obtain the thermal performance of complex structural elements and secondly, a comparative analysis of floors made up of different materials and recesses was conducted, which will be assist in the recommendation of the sustainable and ecological products, with respect to the energy efficiency, for industrial and housing in the world in the future.

---

\* Corresponding author. Tel.: +34-985-182042; fax: +34-985-182433.

*E-mail address:* juanjo@constru.uniovi.es (J. J. del Coz Díaz).

1 During the last years, experimental and numerical studies have been developed to study  
2 two and three dimensional heat transfer phenomena in construction elements made up of  
3 hollow blocks [1-3]. Most interests are involved in the optimization process applied to  
4 obtain the best design from the thermal point of view in case of clay and lightweight  
5 concrete bricks [4-8]. In this paper, the thermal analysis of reinforced concrete one-way  
6 spanning slabs for internal floors is carried out, taking into account both upward and  
7 downward heat flows, in which all heat transfer processes for every constituent  
8 materials are considered [9-15]: conduction, convection and radiation inside enclosures.

9  
10 The FEM [16-20] is a good choice for solving the heat partial differential equation over  
11 complicated domains like hollow blocks, when the domain changes, when the  
12 constituent materials vary, when the desired precision varies over the entire domain, or  
13 even when the solution is continuous but not derivable. This complex problem was  
14 solved in this work by means of the finite element analysis.

## 15 16 **2. Geometry and materials considered in the multilayer floor**

17  
18 In Spanish industrial and housing buildings, different types of multilayer floors are used  
19 [7]. In this way, the most used construction solution is the *in situ cast floor with one-*  
20 *way spanning slabs*. Therefore, this work is applied to the thermal study of this type of  
21 floors when different bricks and different constituent materials are used, in order to find  
22 the best one from the thermal point of view.

23  
24 **Fig. 1.** Structural components of an in situ cast floor with one-way spanning slabs.

25  
26 The usual constituent components of this kind of floor are as follows (see Fig. 1): plant  
27 produced concrete, weldmesh reinforcement, prestressed concrete joists, multi-holed  
28 blocks and gypsum plaster (or other different covering materials). The physical  
29 properties of the constituent materials of the in situ cast floor are indicated in Table 1  
30 [11-12].

### 31 32 **Table 1**

33 Physical properties of the constituent materials.

34  
35 **Fig. 2.** Geometrical models and dimensions (in millimetres) of the clay multi-holed  
36 blocks *CF1*, *CF2*, *CF3*, *CF4*, *CF5* and *CF6*.

37  
38 In order to study the thermal behavior of the in situ cast floors made up of different  
39 multi-holed blocks, we have modeled a total of eighteen different types of floors  
40 keeping the same overall dimensions and varying, on the one hand, the number of  
41 recesses of the blocks (see Fig. 2): *CF1* (three recesses), *CF2* (six recesses), *CF3* (nine  
42 recesses), *CF4* (four recesses), *CF5* (eight recesses) and *CF6* (twelve recesses). On the  
43 other hand, we have considered three different constituent materials for the multiholed  
44 blocks: concrete, lightweight concrete and clay.

1 Secondly, we have built an entire floor with each one of the eighteen different blocks  
 2 described above. The one-way spanning slab is made of five multi-holed blocks with  
 3 four joists, including the weldmesh reinforcement, the plant-produced concrete and the  
 4 gypsum plaster (see Fig. 3).

5  
 6 **Fig. 3.** Two-dimensional FE in situ cast floor: overall view (upper) and a detail (lower).

7  
 8 The minimum thickness of the intermediate bulkheads is 15 mm for both plant-  
 9 produced and lightweight concrete blocks, and 8 mm for the clay blocks. This fact is a  
 10 consequence of the greater mechanical resistance of the clay comparing with the other  
 11 two materials studied: normal concrete and lightweight concrete. Finally, it is possible  
 12 to classify the blocks *CF1* to *CF6* from the number of intermediate bulkheads.  
 13 Therefore, there are two main groups [7]:

- 14 • The first group has two intermediate bulkheads including blocks *CF1* to *CF3*.
- 15 • The second group has three intermediate bulkheads and it includes blocks *CF4*  
 16 to *CF6*.

### 17 18 **3. FEM results and discussion**

19 The above in situ cast floors made up of different multi-holed blocks are discretized by  
 20 the FEM [16-18] and then the thermal behavior of reinforced concrete one-way  
 21 spanning slabs for internal floors is calculated.

22  
 23 In order to check the thermal performance of the different types of multiholed (*CF1* to  
 24 *CF6*), eighteen floors (one per each type of block) have been considered. Then, we have  
 25 built the two-dimensional finite element model, using a two-dimensional 8-node  
 26 quadrilateral finite element for the solid area of blocks to simulate the thermal  
 27 conduction phenomenon, a one-dimensional 3-node (plus an extra node) finite element  
 28 for the recesses of blocks to calculate the thermal convection phenomenon and, finally,  
 29 a one-dimensional 3-node finite element in order to solve the thermal radiation  
 30 phenomenon inside the recesses of blocks [21-22] (see Fig. 3 above).

31  
 32 With respect to the external thermal boundary conditions, we have taken the following  
 33 ones [23]:

- 34 • Downward heat flow: a  $q/A = 10 \text{ W/m}^2$  heat flow in the upper floor side, a  
 35  $h_l = 1/R_{sl} = 5.88 \text{ W/m}^2\text{K}$  film coefficient in the lower floor side, a  $R_{su} = 0.17$   
 36  $\text{m}^2\text{K/W}$  surface resistance in the upper floor side and a 273 K ambient  
 37 temperature.
- 38 • Upward heat flow: a  $q/A = 10 \text{ W/m}^2$  heat flow in the lower floor side, a  
 39  $h_u = 1/R_{su} = 10 \text{ W/m}^2\text{K}$  film coefficient in the upper floor side, a  $R_{sl} = 0.10$   
 40  $\text{m}^2\text{K/W}$  surface resistance in the lower floor side and a 273 K ambient  
 41 temperature

42  
 43 The internal boundary conditions inside the recesses are as follows [23-24]:

- 44 • Downward heat flow: The film convection coefficient inside the recesses in this  
 45 case is:

$$h_a = \max \left\{ 0.12 \times d^{-0.44}, \frac{0.025}{d} \right\} \quad (1)$$

- 1     • Upward heat flow: The film convection coefficient inside the recesses in this  
2     case is:

$$h_a = \max \left\{ 1.95, \frac{0.025}{d} \right\} \quad (2)$$

3  
4     where  $d$  is the thickness of the recesses in the vertical direction.

5  
6     Next, the eighteen different FEM models are solved and the temperature distribution is  
7     determined (see Fig. 4).

8     In order to determine the block's thermal performance it is necessary to define two  
9     important parameters [3-4]:

- 10     • The mass overall thermal efficiency,  $e_{thermal\_p}$  ( $m^2$  K/W/kg): this parameter is  
11     defined as the ratio between the overall thermal resistance and the mass of the  
12     block.  
13     • The equivalent thermal conductivity,  $\lambda_{equi}$  (W/m K): it is defined as the ratio  
14     between the thickness of the multilayer floor and the thermal resistance.

15     Both parameters are calculated from the previous thermal numerical results and they  
16     are shown in Fig. 5.

17  
18     **Fig. 4.** Temperature distribution in floors made up of hollow block types *CF3* (left) and  
19     *CF6* (right) for the downward heat flow: lightweight concrete (a and b), normal concrete  
20     (c and d), and clay (e and f).  
21

22     On the one hand, specifically Fig. 5 (left) show the mass overall thermal efficiencies in  
23     all analyzed cases, both for downward and upward heat flows, and it is evident that the  
24     worst material is the plant-produced concrete (about 0.2 and 0.15% for downward and  
25     upward heat flows, respectively). Moreover, there are several differences between  
26     multiholed blocks, being the blocks *CF1* and *CF4* the worst of them. It is also possible  
27     to observe that the best block from the thermal performance point of view is the block  
28     *CF3* made up of lightweight concrete as the constituent material, since its average value  
29     (0.3% and 0.37% for upward and downward heat flows, respectively) is the biggest one.  
30

31     **Fig. 5.** Mass overall thermal efficiency (left) and equivalent thermal conductivity (right)  
32     for downward heat flow (upper) and upward heat flow (lower) for the three analyzed  
33     materials and six different models.  
34

35     On the other hand, it is shown the numerical results for the equivalent thermal  
36     conductivity in Fig. 5 (right). From the point of view of this parameter, the best blocks  
37     is *CF3* made up of lightweight concrete.  
38

39     After examining the results obtained numerically, it can be assumed that the numerical  
40     procedure constitutes a reasonable approach to choose the best type of block from the

1 thermal point of view. The finite element model used in this work reproduces accurately  
2 the heat transfer for in situ cast floors made up of different constituent materials and  
3 different recesses with complex shapes.

## 4 5 **5. Conclusions**

6  
7 In the first place, a numerical thermal analysis technique (by FEM) has been carried out  
8 to study eighteen different in situ cast floors, made up of three different constituent  
9 materials for the hollow blocks. Taking into account the variation of the dimensions of  
10 the recesses, it is possible to modify the thermal efficiency of the blocks and,  
11 consequently of the full floor. Based on the mass overall thermal efficiency and the  
12 equivalent thermal conductivity, it is possible to select best candidate floor from the  
13 thermal point of view.

14  
15 In the second place, the equivalent thermal conductivity depends on both the number of  
16 the vertical and horizontal intermediate bulkheads and the constituent material.  
17 Therefore, if the number of horizontal intermediate bulkheads is increased and the  
18 material is changed, the thermal transmittance grows more than if the number of vertical  
19 intermediate ones does.

20  
21 Thirdly, the overall heat transfer coefficient increases if material conductivity increases  
22 and the number of recesses decrease. The bigger mass overall thermal efficiency, the  
23 better thermal insulation and the lower floor's weight. Therefore, the support structure  
24 of these floors will be subjected to smaller dead loads and the best block from the  
25 average mass overall thermal efficiency point of view was the block *CF3*.

26  
27 Finally, there is an increasing interest to use materials with good physical properties  
28 with respect to an energy savings, which also fulfil all strength and serviceability  
29 requirements for housing and industrial structures. From this point of view, the architect  
30 or engineer can use the results shown in this research work to obtain the best candidate  
31 floor configuration according to their thermal requirements.

## 32 33 **Acknowledgements**

34 The authors wish to acknowledge the financial support provided by Spanish Ministry of  
35 Science and Innovation through the Research Project BIA2008-00058. We also thank to  
36 Swanson Analysis Inc. for the use of ANSYS Academic program, the Department of  
37 Construction at University of Oviedo and the MAXIT Group.

## 38 39 **References**

- 40 [1] J.J. del Coz Díaz, P.J. García Nieto, A. Martín Rodríguez, A. Lozano Martínez-Luengas, C. Betegón  
41 Biempica, Non-linear thermal analysis of light concrete hollow brick walls by the finite element  
42 method and experimental validation, *Applied Thermal Engineering* 26 (8-9) (2006) 777-786.  
43 [2] A. Bouchair, Steady state theoretical model of fired clay hollow bricks for enhanced external wall  
44 thermal insulation, *Building and Environment* 43 (10) (2008) 1603-1618.  
45 [3] J.J. del Coz Díaz, P.J. García Nieto, C. Betegón Biempica, M.B. Prendes Gero, Analysis and  
46 optimization of the heat-insulating light concrete hollow brick walls design by the finite element  
47 method, *Applied Thermal Engineering* 27 (8-9) (2007) 1445-1456.



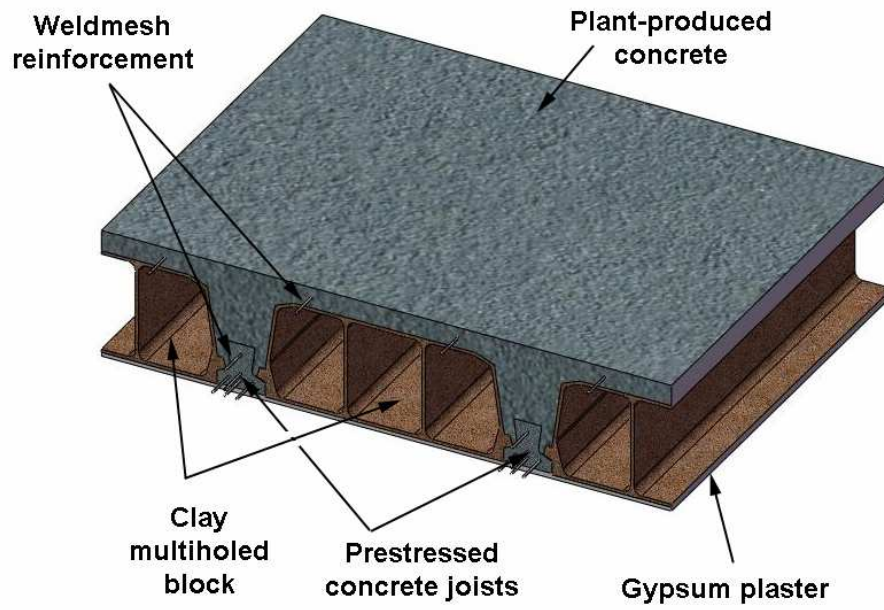
- 1 [4] J.J. del Coz Díaz, P.J. García Nieto, J.L. Suárez Sierra, C. Betegón Biempica, Nonlinear thermal  
2 optimization of external light concrete multi-holed brick walls by the finite element method,  
3 International Journal of Heat and Mass Transfer 51 (7-8) (2008) 1530-1541.
- 4 [5] L.P. Li, Z.G. Wu, Y.L. He, G. Lauriat, W.Q. Tao, Optimization of the configuration of  $290 \times 140 \times 90$   
5 hollow clay bricks with 3-D numerical simulation by finite volume method, Energy and Buildings 40  
6 (10) (2008) 1790-1798.
- 7 [6] J.J. del Coz Diaz, P.J. García Nieto, J.L. Suárez Sierra, I. Peñuelas Sánchez, Non-linear thermal  
8 optimization and design improvement of a new internal light concrete multi-holed brick walls by  
9 FEM, Applied Thermal Engineering 28 (8-9) (2008) 1090-1100.
- 10 [7] J.J. del Coz Diaz, P.J. García Nieto, J. Domínguez Hernández, A. Suárez Sánchez, Thermal design  
11 optimization of lightweight concrete blocks for internal one-way spanning slabs floors by FEM,  
12 Energy and Buildings 41 (12) (2009) 1276-1287.
- 13 [8] B. López-Mesa, A. Pitarch, A. Tomás, T. Gallego, Comparison of environmental impacts of building  
14 structures with in situ cast floors and with precast concrete floors, Building and Environment 44 (4)  
15 (2009) 699-712.
- 16 [9] F.P. Incropera, D.P. DeWitt, Introduction to Heat Transfer, Wiley, New York, 2001.
- 17 [10] F. Kreith, M. S. Bohn, Principles of Heat Transfer, Thomson-Engineering, New York, 2000.
- 18 [11] A.F. Mills, Heat transfer, Prentice Hall, New York, 1998.
- 19 [12] W.M. Rohsenow, J.P. Hartnett, Y. I. Cho, Handbook of Heat Transfer, McGraw-Hill Professional,  
20 New York, 1998.
- 21 [13] H.S. Carslaw, J.C. Jaeger, Conduction of Heat in Solids, Oxford University Press, New York, 1986.
- 22 [14] R. Siegel, J. Howell, Thermal Radiation Heat Transfer, Taylor and Francis Group, New York, 2001.
- 23 [15] M.F. Modest, Radiative Heat Transfer, Academic Press, New York, 2003.
- 24 [16] K.-J. Bathe, Finite element procedures, Prentice-Hall, Englewoods Cliffs, New Jersey, 2007.
- 25 [17] O.C. Zienkiewicz, R.L. Taylor, The Finite Element Method: Solid and Fluid Mechanics, Dynamics  
26 and Non-Linearity, McGraw-Hill Book Company, London, 1991.
- 27 [18] O.C. Zienkiewicz, R.L. Taylor, P. Nithiarasu, The Finite Element Method for Fluid Dynamics,  
28 Butterworth-Heinemann, New York, 2005.
- 29 [19] R.D. Cook, D.S. Malkus, M.E. Plesha, R.J. Witt, Concepts and Applications of Finite Element  
30 Analysis, Wiley, New York, 2001.
- 31 [20] J.-M. Bergheau, R. Fortunier, Finite Element Simulation of Heat Transfer, Wiley-ISTE, New York,  
32 2008.
- 33 [21] E. Madenci, I. Guven, The Finite Element Method and Applications in Engineering using ANSYS,  
34 Springer, Berlin, 2007.
- 35 [22] S. Moaveni, Finite Element Analysis Theory and Application with ANSYS, Prentice Hall, New  
36 York, 2007.
- 37 [23] UNE-EN ISO 6946, Elements and construction components. Resistance and thermal transmittance:  
38 Calculation method, AENOR, Madrid, 1997.
- 39 [24] UNE-EN-1745, Masonry and masonry products. Methods for determining design thermal values.  
40 AENOR, Madrid, 2002.



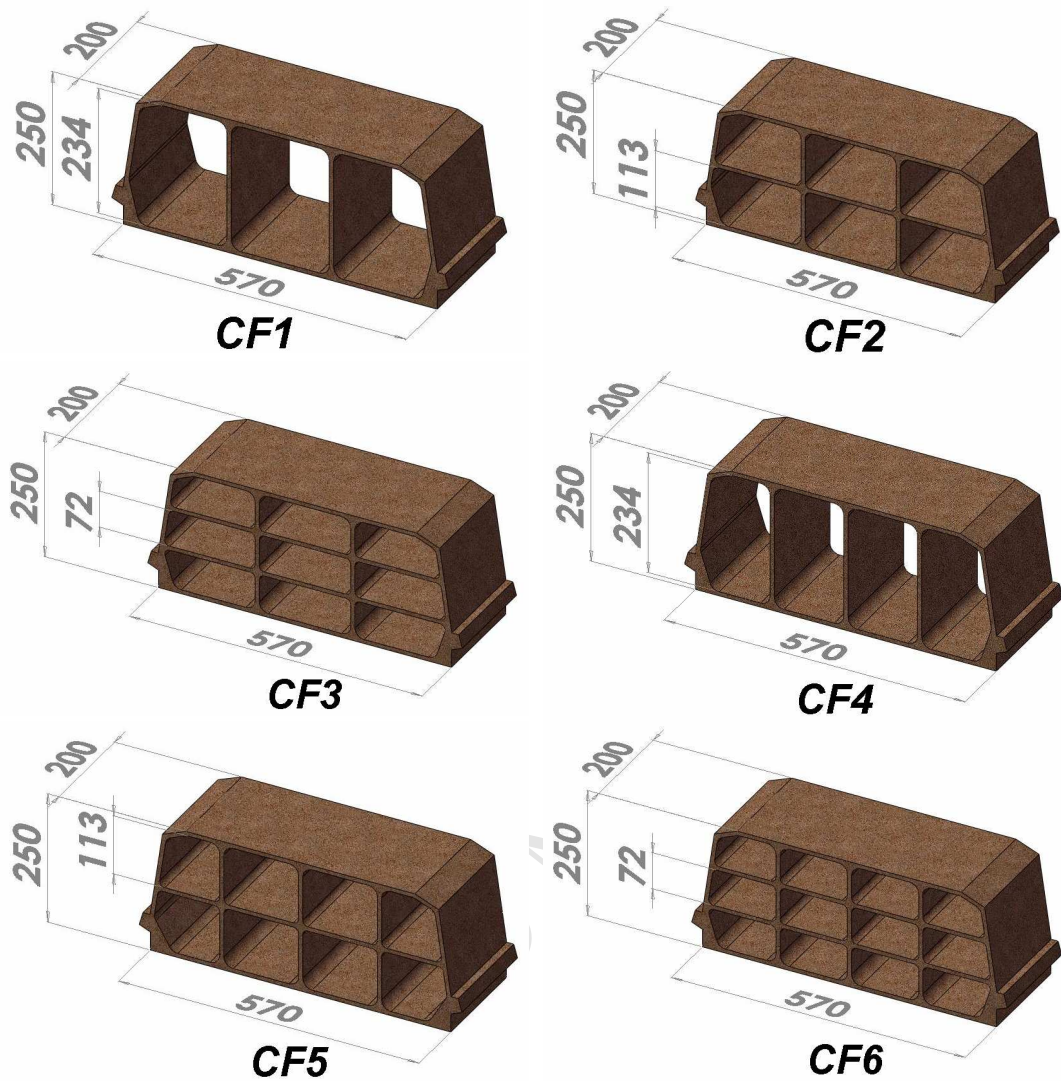
**Table 1**

Physical properties of the constituent materials.

Item	Density [kg/m <sup>3</sup> ]	Conductivity $\lambda$ [W/m K]
Plant-produced concrete	2,200	1.600
Weldmesh reinforcement	7,850	60.000
Prestressed concrete joist	2,200	1.600
Clay	1,500	0.510
Lightweight concrete	1,000	0.347
Gypsum plaster	1,100	0.280



**Fig. 1.** Structural components of an in situ cast floor with one-way spanning slabs.



**Fig. 2.** Geometrical models and dimensions (in millimetres) of the clay multi-holed blocks *CF1*, *CF2*, *CF3*, *CF4*, *CF5* and *CF6*.

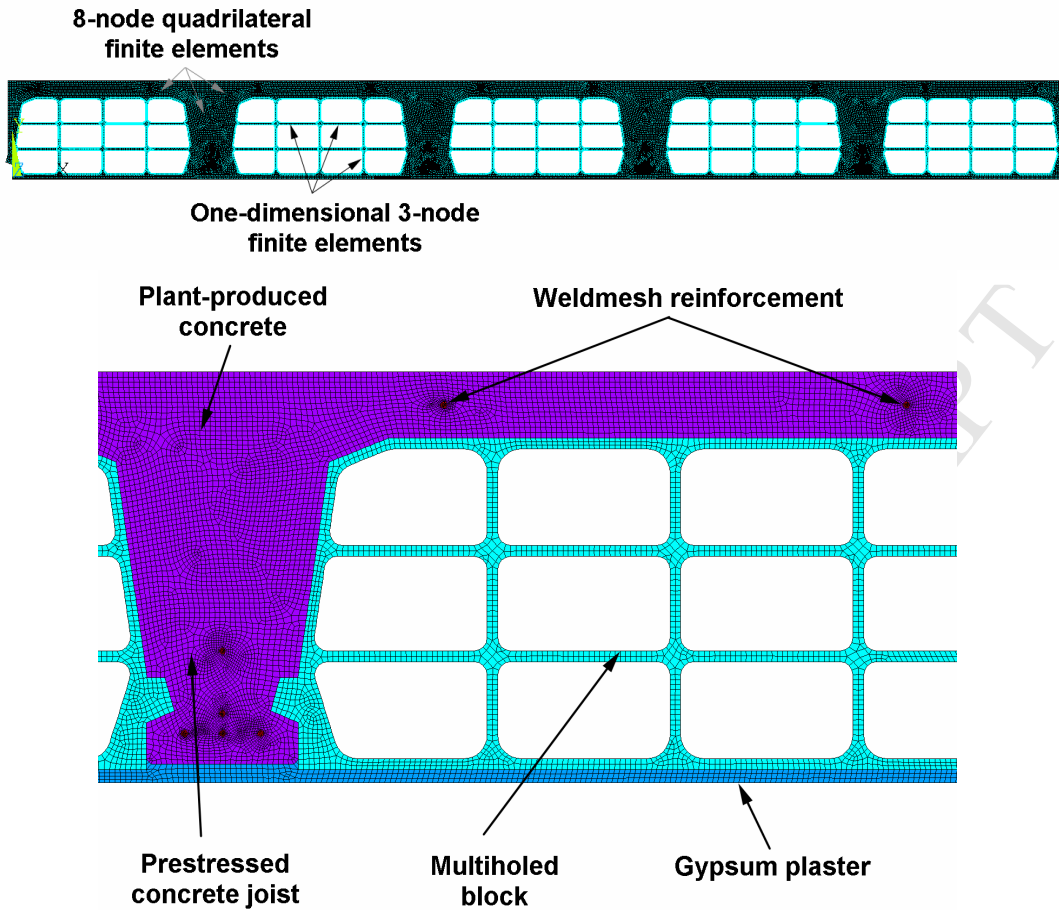
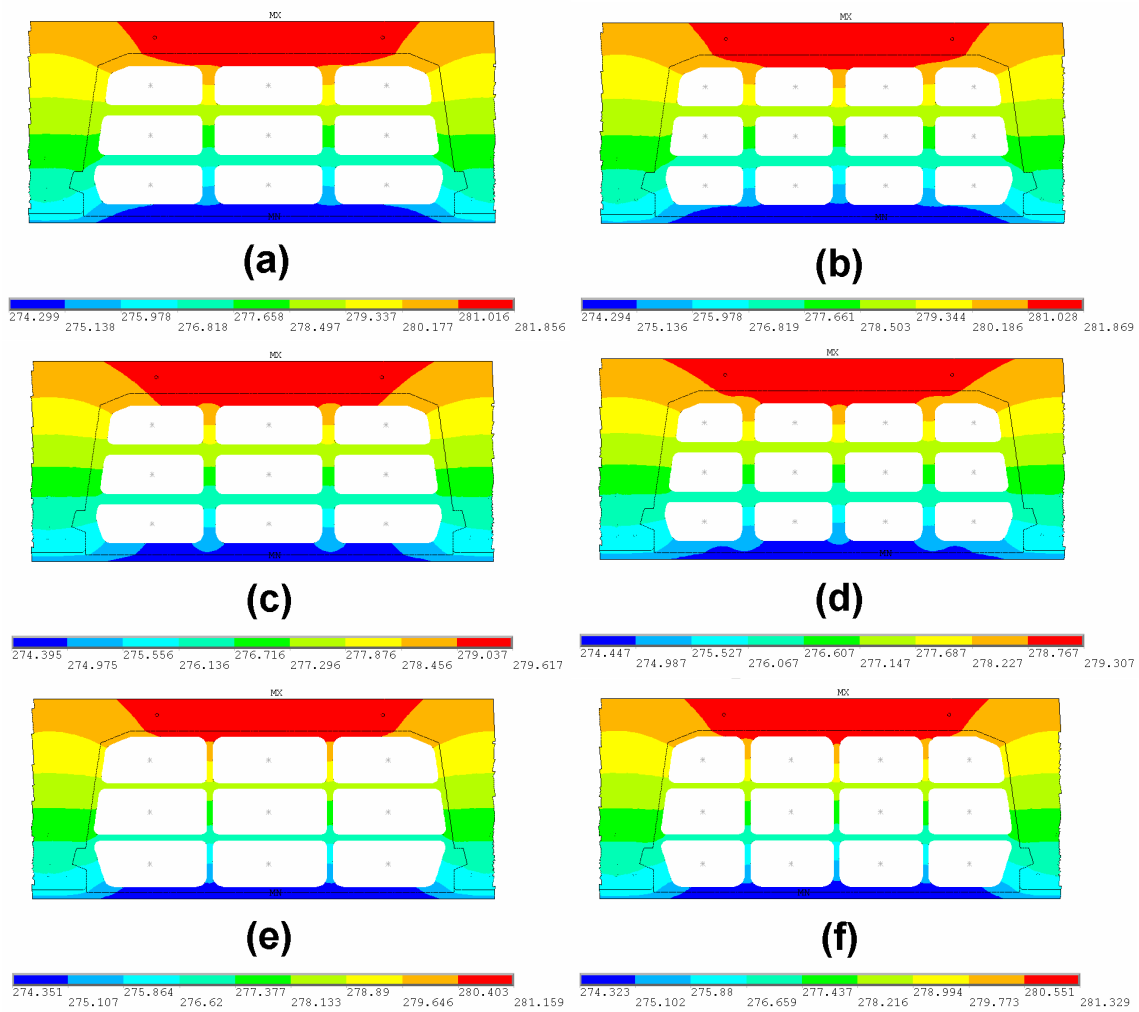
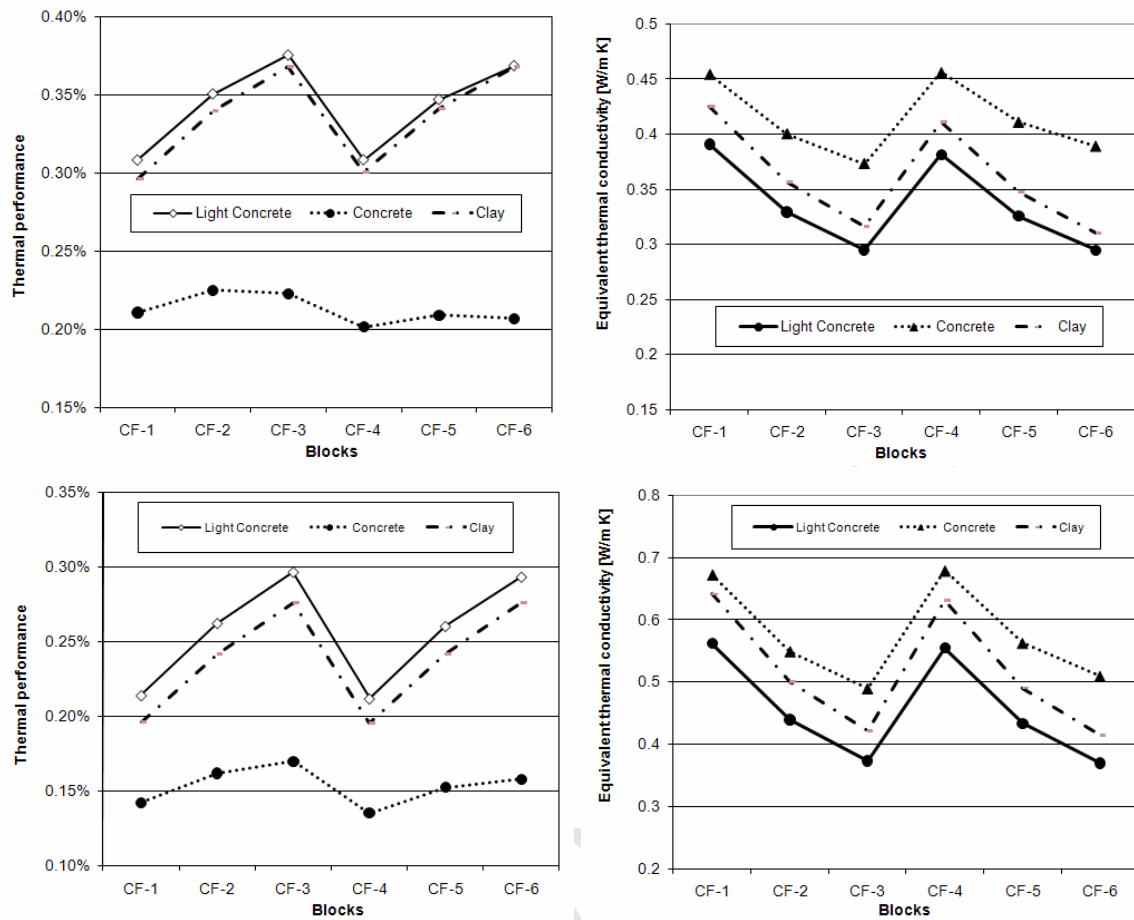


Fig. 3. Two-dimensional FE in situ cast floor: overall view (upper) and a detail (lower).



**Fig. 4.** Temperature distribution in floors made up of hollow block types *CF3* (left) and *CF6* (right) for the downward heat flow: lightweight concrete (a and b), normal concrete (c and d), and clay (e and f).



**Fig. 5.** Mass overall thermal efficiency (left) and equivalent thermal conductivity (right) for downward heat flow (upper) and upward heat flow (lower) for the three analyzed materials and six different models.