



HAL
open science

C1q enhances cone photoreceptor survival in a mouse model of autosomal recessive retinitis pigmentosa.

Marian M Humphries, Paul F Kenna, Matthew Campbell, Lawrence Cs Tam, Anh Th Nguyen, G Jane Farrar, Marina Botto, Anna-Sophia Kiang, Peter Humphries

► To cite this version:

Marian M Humphries, Paul F Kenna, Matthew Campbell, Lawrence Cs Tam, Anh Th Nguyen, et al.. C1q enhances cone photoreceptor survival in a mouse model of autosomal recessive retinitis pigmentosa.. *European Journal of Human Genetics*, 2011, 10.1038/ejhg.2011.151 . hal-00671237

HAL Id: hal-00671237

<https://hal.science/hal-00671237>

Submitted on 17 Feb 2012

HAL is a multi-disciplinary open access archive for the deposit and dissemination of scientific research documents, whether they are published or not. The documents may come from teaching and research institutions in France or abroad, or from public or private research centers.

L'archive ouverte pluridisciplinaire **HAL**, est destinée au dépôt et à la diffusion de documents scientifiques de niveau recherche, publiés ou non, émanant des établissements d'enseignement et de recherche français ou étrangers, des laboratoires publics ou privés.

Clq enhances cone photoreceptor survival in a mouse model of autosomal recessive retinitis pigmentosa.

Marian M Humphries^{1*}, Paul F Kenna^{1,2*}, Matthew Campbell¹ Lawrence CS Tam¹, Anh TH Nguyen¹, G Jane Farrar¹, Marina Botto³, Anna Sophia Kiang¹ and Peter Humphries¹.

¹The Ocular Genetics Unit, Institute of Genetics, Trinity College Dublin, Dublin 2, Ireland.

²The Research Foundation, The Eye and Ear Hospital, Adelaide Road, Dublin 2, Ireland.

³Centre for Complement & Inflammation Research, Department of Medicine, Imperial College, London, United Kingdom.

* Authors contributed equally

Correspondence: Marian Humphries, The Ocular Genetics Unit, Smurfit Institute of Genetics, Trinity College, Dublin, Ireland.

Running Title: Complement and cone photoreceptor viability

Abstract

Retinitis pigmentosa (RP) is a degenerative retinal disease involving progressive loss of rod and cone-photoreceptor function. It represents the most common form of registered blindness among the working-aged populations of developed countries. Given the immense genetic heterogeneity associated with this disease, parameters influencing cone photoreceptor survival (preservation of daytime vision) that are independent of primary mutations are exceedingly important to identify from a therapeutic standpoint. Here we identify C1q, the primary component of the classical complement pathway, as a cone photoreceptor neuronal survival factor.

Key words

C1qa, C3, retinopathy, Retinitis pigmentosa, complement, cone photoreceptors, retina.

Introduction

Hereditary retinopathies, prominent among which is retinitis pigmentosa (RP), conditions involving progressive death of photoreceptors are amongst the most genetically heterogeneous of any group of mendelian conditions. Including Leber congenital amaurosis (LCA), a congenital retinopathy with pathological features bearing similarities to retinitis pigmentosa (RP), 60 genes have now been implicated in disease aetiology. If syndromic forms of disease and other hereditary retinopathies are included, 202 genetic loci have been identified and a total of 161 genes so far characterized¹. RP segregates largely in an autosomal dominant, recessive, or X-linked recessive manner² while all of the sixteen genetic forms of LCA that have been identified to date are autosomal recessive, hence gene therapies require strategies based either on gene replacement, or on the selective suppression of dominantly mutated genes, or their transcripts. Progress is being made to the extent that clinical trials involving AAV-mediated gene replacement have now been established for one form of LCA caused by mutations within the RPE65 gene.³⁻⁵ In addition, therapeutic modalities have been demonstrated for other genetic subtypes of RP and LCA in a growing number of animal models, both of recessive and dominant forms of disease.⁶⁻²³ Notwithstanding such progress, the genetic complexity of this group of diseases represents a formidable logistic and economic hurdle in developing viable methods of prevention. Given this caveat, parameters effecting photoreceptor survival that are independent of the primary genetic lesion are critically important to identify. It has emerged over the last five or so years that major pathological features involving sub-retinal drusen deposition and choroidal neovascularisation that are associated with one form of multifactorial retinopathy, namely age-related macular degeneration (AMD), where the central cone-

rich part of the retina, or macula, degenerates, can now be explained, at least in part, by excessive complement activity on ocular surfaces (reviewed in ^{24, 25-30}). However, the influence of complement on cone photoreceptor survival is less clear in hereditary (as opposed to multi-factorial) forms of retinal disease. Here we show that levels of C1q, the primary component of the classical complement pathway, rise substantially over the course of retinal degeneration in mice induced by a targeted disruption of the rhodopsin gene, a model of autosomal recessive RP and that in the absence of C1q (Rho^{-/-}-C1qa^{-/-}) cone photoreceptor function and viability are significantly compromised. We suggest that the protective effect observed here may relate to the role of C1q in clearance of apoptotic cells from the retina. These observations may assist in the development of strategies for optimal cone cell survival in such conditions.

Materials and Methods

Mice

All experiments involving the use of mice were assessed and approved by an internal ethics committee at Trinity College Dublin. All studies carried out adhered to the ARVO statement for the use of animals in ophthalmic and vision research.

Genotyping Analysis

Rho^{-/-}, C1qa^{-/-} and C3^{-/-} mice, on C57BL/6 backgrounds, were genotyped as follows. Rhodopsin: Oligo a (5'-TTCAAGCCCAAGCTTTCGCG-3') is a reverse primer for pol2:neo. Oligoes b and c are forward and reverse primers for exon II of the rhodopsin gene (b, 5'-TCTCTCATGAGCCTAAAGC-3'; c, 5'-ATGCCTGGAACCAATCCGAG-3'). C1qa: Oligo d (5'-

GGGGATCGGCAATAAAAAGAC-3') is a primer in the 3' end of the neomycin gene and oligoes e and f are forward and reverse primers for the C1qa gene (e, 5'-GGGGCCTGTGATCCAGACAG-3'; f, 5'-TAACCATTCCTCCAGGATGG-3'). C3: Oligo g (5'-AAGGGACTGGCTGCTATTGG-3') is a primer in the neomycin gene and oligos h and i are forward and reverse primers for the C3 gene (h, 5'-CTTCATAGACTGCTGCAACCA-3'; i, 5'-ACCAGCTCTGTGGGAAGTG-3'). Amplification reaction: 100ng DNA, 50pmol of each oligonucleotide primer, 200µM each of dGTP, dATP, dCTP and dTTP, 1.5mM MgCl₂ and 1.25µl of GoTaq DNA Polymerase (Medical Supply Co. Ltd., Ireland) in a total reaction volume of 50µl. PCR conditions; 95°C 2 min; [95°C 1 min; 60°C 1 min; 72°C 1 min] for 35 cycles, and a final extension of 72°C for 5 mins. PCR products were resolved on a 1.5% agarose gel, fragments of 461 and 300 bp, 360 and 160bp and 920 and 1100 bp being diagnostic of the wild-type and mutant alleles of the Rhodopsin, C1qa and C3 genes respectively.

Electroretinographic (ERG) analysis

Three month old animals of genotypes C1qa^{-/-}Rho^{-/-}, C3^{-/-}Rho^{-/-} and Rho^{-/-} were dark-adapted overnight and prepared for ERG under dim red light. Pupillary dilation was carried out by instillation of 1% cyclopentolate and 2.5 % phenylephrine. Animals were anesthetized by intraperitoneal injection of ketamine (2.08 mg per 15g body weight) and xylazine (0.21 mg per 15g body weight). The ERG commenced ten minutes after administration of anesthetic. Standardised flashes of light were presented to the mouse in a Ganzfeld bowl to ensure uniform retinal illumination. The ERG responses were recorded simultaneously from both eyes by means of gold wire electrodes (Roland Consulting GmbH, Germany) using Vidisc (Dr Mann Pharma, Germany) as a conducting agent and to maintain corneal hydration. The eye was maintained in a

proposed position throughout the examination by means of a small plastic band placed behind the globe. Reference and ground electrodes were positioned subcutaneously, approximately 1 mm from the temporal canthus and anterior to the tail respectively. Body temperature was maintained at 37°C using a heating device controlled by a rectal temperature probe. Responses were analysed using a RetiScan RetiPort electrophysiology unit (Roland Consulting GmbH, Germany). The protocol was based on that approved by the International Clinical Standards Committee for human electroretinography. Cone-isolated responses were recorded using a white flash of intensity 3 candelas/m²/s presented against a rod-suppressing background light of 30 candelas/m² to which the previously dark-adapted animal had been exposed for 10 minutes prior to stimulation. The responses to 48 individual flashes, presented at a frequency of 0.5Hz, were computer averaged. a-waves were measured from the baseline to a-wave trough and b-waves from the a-wave trough to the b-wave peak.³¹

Immunohistochemical analysis of retinal cryosections

Following euthanasia by means of CO₂ eyes from mice were fixed in 4 % paraformaldehyde (PFA), pH 7.4, for 4 hours followed by 3 washes in PBS. Eyes were cryoprotected using a sucrose gradient and subsequently embedded in optimum cutting temperature (O.C.T) embedding compound (Lennox Ltd. Ireland), and cryostat sections (12 µm) were cut onto amino-propyltriethoxysilane-coated glass slides. For cone staining sections were blocked for 1 hour with normal goat serum (NGS) and subsequently incubated with peanut agglutinin-Alexa-568 (1:500, Invitrogen, Carlsbad, CA, USA) overnight at 4°C. Sections were washed 3 times with PBS, counter-stained with DAPI. For blue cone opsin staining, sections were air dried, and blocked for 1 hour in 5 % donkey serum at room temperature. Sections were subsequently incubated

with a polyclonal goat anti-blue sensitive opsin antibody (Santa Cruz Biotechnology, Santa Cruz, CA, USA) overnight at 4 °C (1:100 dilution in PBS containing 1 % donkey serum). Following 3 X 15 minute washes with PBS, sections were incubated with a secondary antibody (goat anti-sheep IgG-Cy3 (Red), Jackson-Immuno-research, Europe) for 1 hour at 37 °C. Nuclei were counterstained with DAPI (Blue) and mounted using Aqua-Polymount[®] mounting medium. Analysis of stained sections was performed at room temperature with an Olympus FluoView TM FV1000 Confocal microscope with integrated software (Mason Technology, Dublin, Ireland).

Total RNA isolation from retinal tissues for quantitative real-time PCR analysis

Collected retinal tissues were frozen in liquid nitrogen and stored at -80°C. Total RNA was extracted from retinas of 3 mice per experimental group using an RNeasy Mini Kit (Qiagen, Hilden, Germany) according to manufacturer's protocol. The level of C1qa transcript was quantified using Applied Biosystems 7300 Real-Time PCR System (Life Technologies Corporation, Carlsbad, CA, USA) with Quantitect SYBR Green Kit according to manufacturer's protocol (Qiagen, Hilden, Germany). The following amplification conditions were used: 50°C for 20 minutes; 95°C for 15 minutes; 37 cycles of 95°C for 15 seconds; 60°C for 1 minute. Dissociation steps included 95°C for 15 seconds; 60°C for 1 minute; 95°C for 15 seconds and 60°C for 15 seconds. C1qa mRNA levels were normalized to the corresponding β -actin level for each sample. HPLC-purified primers (Sigma-Genosys, Ireland) used for amplification were as follow: C1qa forward 5'ATGGAGACCTCTCAGGGATG 3'; C1qa reverse 5'CCCGTTGTCACACTTATAGC 3'; β -actin forward 5'TCACCCACACTGTGCCCATCTACGA 3'; β -actin reverse 5'

CAGCGGAACCGCTCATTGCCAATGG3'. Experiments were repeated 3 times in triplicate and for each time point data are expressed as mean \pm SEM and analyzed using a two-tailed Student's *t* test, with $p < 0.05$ considered significant.

Results

We crossed Rho^{-/-}³², and C1qa^{-/-} mice³³, (both animals had been bred onto congenic C57BL/6 backgrounds). Rho^{-/-} mice never develop normal rod outer segments and lose their rods within 3 months. At that point, cones are still present, and approximately three rows of nuclei, including non-functional rods and remaining cones, are observable in the outer nuclear layer of the retina.³⁴ Moreover, cone function is still readily detectable by ERG.³⁵ Figure 1a shows typical cone ERGs from C57BL/6 and C1qa^{-/-} mice, indicating essentially no differences between these animals. The timing of the photopic b-wave in each tracing is essentially identical at c. 52 msec when animals are compared. The morphologies of the waveforms differ somewhat, mainly in the less prominent oscillatory potential on the up-slope of the C1qa^{-/-}, but this variation is well within the range which is observed between individual animals. Similar variation, when observed in human patients, would not be of clinical significance. Left and right panels of Figure 1b, show cone responses from Rho^{-/-} and C1qa^{-/-}Rho^{-/-} mice respectively at three months. The reduction in amplitudes of cone b-wave in double knockout mice is strikingly apparent compared to the Rho^{-/-} genotype and a direct reflection of a reduction in cone viability. A two-sample t-test comparison of b-wave amplitudes between C1qa^{-/-}Rho^{-/-} and Rho^{-/-} mice showed a highly significant reduction in amplitudes in double knockouts (**P=0.0026) (Figure 1c).

We stained retinal cryosections from 3 month old mice with peanut agglutinin, a

lectin which is specific for cone photoreceptors. The pattern and distribution of cone photoreceptors appeared decreased and more disordered in C1qa^{-/-}Rho^{-/-} retinas when compared to Rho^{-/-} retinas at 3 months of age (Figure 2a). Six out of seven C1qa^{-/-}Rho^{-/-} mice analyzed showed no immunoreactivity for blue cone opsin, whereas distinct staining was still observable in Rho^{-/-} retinas at 3 months old (Figure 2b).

Levels of C1qa transcript were analyzed by RT-PCR and were highly elevated in Rho^{-/-} retinas at 30 days, and this increase was observed up to and including 90 days old when compared to wild type (WT) mice (Figure 3) (n = 3 mice per group and 3 replicate experiments).

We also examined cone viability and function in Rho^{-/-} mice on a genetic background with a targeted disruption of the C3 gene.³⁶ We observed no statistical differences in cone ERG's between C3^{-/-}Rho^{-/-} and Rho^{-/-} animals (Figure 4).

Discussion

While significant progress is being made in the development of gene-based medicines for degenerative retinopathies, the very high level of heterogeneity of these conditions at the genetic level is a major impediment to rapid progress. While the human retina is rod-dominated, preservation of cone function is of primary significance and in this regard, a number of cone photoreceptor survival factors have been identified. In an extensive analysis of global transcriptional profiles in four murine retinopathy models, a high number of transcripts from genes encoding proteins of the insulin/mTOR signaling pathway were found to be up-regulated, and these workers were able to show that systemic administration of insulin enhances cone photoreceptor survival.³⁷ While AAV-mediated expression of ciliary neurotrophic factor has been shown to result in

significant cone cell loss in the Rd2 model of murine retinal degeneration³⁸, encapsulated release of this compound directly into the vitreous has been shown to be effective in preservation of vision in human subjects and appears to be the only neuroprotective factor currently in clinical trial for treatment of degenerative retinopathies.^{39,40} Another cone cell survival factor showing substantial promise in slowing retinal degeneration is rod-derived cone viability factor (RDCVF). This protein is a member of the thioredoxin family and has been shown to be protective against oxidative stress,⁴¹⁻⁴³ Mice with a targeted disruption of the RDCVF gene (*Nxn11*^{-/-}) show enhanced loss of cone photoreceptor viability and function⁴⁴, and it has also been shown that sub-retinal inoculation of the purified protein results in a therapeutic effect.⁴⁵ In regard to the neuroprotective effect exerted by C1q in the current study, this protein is a primary component of the classical complement pathway. Complement activity within the eye has been firmly associated with AMD development, where anaphylatoxin-induced induction of vascular endothelial growth factor may contribute to choroidal neovascularisation, the major sight-threatening pathology associated with the exudative form of disease.⁴⁶⁻⁴⁸ C1q is not, therefore, an immediately obvious neuroprotective candidate. However, this protein also binds to cells in the later phases of apoptosis, activating the classical complement pathway, with the resultant deposition onto such cells of complement components C3 and C4, facilitating phagocytosis.⁴⁹⁻⁵¹

All evidence indicates that in degenerative retinopathies, photoreceptor death is apoptotic.^{52,53} We have shown here that levels of C1q progressively rise over the course of photoreceptor degeneration in the *Rho*^{-/-} mouse model. *Rho*^{-/-} mice lose all (up to one million) rods over 3 months, or, averaged out over this period of time, approximately 10,000 photoreceptors per day by apoptosis. We suggest that appreciably

higher levels of C1q in Rho^{-/-} mice as the disease progresses represents a physiological response to optimally maintain apoptotic cell clearance and in the absence of C1q, clearance is sub-optimal, favoring cell lysis and hence the induction of inflammatory processes which may negatively impact on disease pathology. In support of this hypothesis, we show that in the absence of C1q, cone photoreceptor viability and function are significantly compromised. It is of interest to note that in an elegant study, Rohrer *et al*⁵⁴ have recently reported that photoreceptor degeneration in the rd1 mouse, with a naturally occurring null mutation within the gene encoding the β -subunit of cyclic GMP phosphodiesterase, is unaffected in the absence of C1q. However, no electroretinographic studies on cone cell function were reported in that study and the rapidity of retinal degeneration in that model (complete photoreceptor loss within 3 weeks of birth) may have masked any more subtle effects in phenotype that may have been induced by the absence of C1q. In regard to strategies for cone cell preservation in degenerative hereditary retinopathies, data presented here suggest that optimal cone viability will be achieved by maintaining, or enhancing the expression of C1q.

Acknowledgements

This work was supported by EVI-Genoret (LSHG-CT-2005-512036), and Fighting Blindness Ireland.

Conflict of Interest

The authors declare no conflict of interest.

References

1. RetNet: The retinal Information Network,
<http://www.sph.uth.tmc.edu/RetNet/Stephen> P. Daiger, PhD, Administrator,
The Univ. of Texas Health Science Center at Houston, 1996-present.
2. Heckenlively JR: *Retinitis Pigmentosa*. Philadelphia, PA, USA: J.B. Lippincott, 1988.
3. Bainbridge JW, Smith AJ, Barker SS *et al*: Effect of gene therapy on visual function in Leber's congenital amaurosis. *N Engl J Med* 2008; **358**: 2231-2239.
4. Maguire AM, Simonelli F, Pierce EA *et al*: Safety and efficacy of gene transfer for Leber's congenital amaurosis. *N Engl J Med* 2008; **358**: 2240-2248.
5. Hauswirth WW, Aleman TS, Kaushal S *et al*: Treatment of leber congenital amaurosis due to RPE65 mutations by ocular subretinal injection of adeno-associated virus gene vector: short-term results of a phase I trial. *Hum Gene Ther* 2008; **19**: 979-990.
6. Acland GM, Aguirre GD, Ray J *et al*: Gene therapy restores vision in a canine model of childhood blindness. *Nat Genet* 2001; **28**: 92-95.
7. Smith AJ, Schlichtenbrede FC, Tschernutter M, Bainbridge JW, Thrasher AJ, Ali RR: AAV-Mediated gene transfer slows photoreceptor loss in the RCS rat model of retinitis pigmentosa. *Mol Ther* 2003; **8**: 188-195.
8. Tschernutter M, Schlichtenbrede FC, Howe S *et al*: Long-term preservation of retinal function in the RCS rat model of retinitis pigmentosa following lentivirus-mediated gene therapy. *Mol Ther* 2005; **12**: 694-701.

9. Pawlyk BS, Smith AJ, Buch PK *et al*: Gene replacement therapy rescues photoreceptor degeneration in a murine model of Leber congenital amaurosis lacking RPGRIP. *Invest Ophthalmol Vis Sci* 2005; **46**: 3039-3045.
10. Kiang AS, Palfi A, Ader M *et al*: Toward a gene therapy for dominant disease: validation of an RNA interference-based mutation-independent approach. *Mol Ther* 2005; **12**: 555-561.
11. Min SH, Molday LL, Seeliger MW *et al*: Prolonged recovery of retinal structure/function after gene therapy in an Rslh-deficient mouse model of x-linked juvenile retinoschisis. *Mol Ther* 2005; **2**: 644-651.
12. Jacobson SG, Acland GM, Aguirre GD *et al*: Safety of recombinant adeno-associated virus type 2-RPE65 vector delivered by ocular subretinal injection. *Mol Ther* 2006; **13**: 1074-1084.
13. Hashimoto T, Gibbs D, Lillo C, Azarian SM *et al*: Lentiviral gene replacement therapy of retinas in a mouse model for Usher syndrome type 1B. *Gene Ther* 2007; **14**: 584-594.
14. Alexander JJ, Umino Y, Everhart D *et al*: Restoration of cone vision in a mouse model of achromatopsia. *Nat Med* 2007; **13**: 685-687.
15. O'Reilly M, Palfi A, Chadderton N *et al*: RNA interference-mediated suppression and replacement of human rhodopsin in vivo. *Am J Hum Genet* 2007; **81**: 127-135.
16. Kong J, Kim SR, Binley K *et al*: Correction of the disease phenotype in the mouse model of Stargardt disease by lentiviral gene therapy. *Gene Ther* 2008; **15**: 1311-1320.

17. Pang JJ, Boye SL, Kumar A *et al*: AAV-mediated gene therapy for retinal degeneration in the rd10 mouse containing a recessive PDEbeta mutation. *Invest Ophthalmol Vis Sci* 2008; **49**: 4278-4283.
18. Tam LC, Kiang AS, Kennan A *et al*: Therapeutic benefit derived from RNAi-mediated ablation of IMPDH1 transcripts in a murine model of autosomal dominant retinitis pigmentosa (RP10). *Hum Mol Genet* 2008; **17**: 2084-2100.
19. Tan MH, Smith AJ, Pawlyk B *et al*: Gene therapy for retinitis pigmentosa and Leber congenital amaurosis caused by defects in AIPL1: effective rescue of mouse models of partial and complete Aipl1 deficiency using AAV2/2 and AAV2/8 vectors. *Hum Mol Genet* 2009; **18**: 2099-2114.
20. Sun X, Pawlyk B, Xu X *et al*: Gene therapy with a promoter targeting both rods and cones rescues retinal degeneration caused by AIPL1 mutations. *Gene Ther* 2009; **17**: 117-131.
21. Komáromy AM, Alexander JJ, Rowlan JS *et al*: Gene therapy rescues cone function in congenital achromatopsia. *Hum Mol Genet* 2010; **19**: 2581-2593.
22. Tam LC, Kiang AS, Campbell M, Keaney J, Farrar GJ, Humphries MM, Kenna PK, Humphries P: Prevention of autosomal dominant retinitis pigmentosa by systemic drug therapy targeting heat shock protein 90 (Hsp90). *Hum Mol Genet* 2010; **19**: 4421-4436.
23. Li X, Li W, Dai X *et al*: Gene therapy rescues cone structure and function in the 3-month-old rd12 mouse: a model for midcourse RPE65 leber congenital amaurosis. *Invest Ophthalmol Vis Sci* 2011; **52**: 7 -15.
24. Edwards AO, Malek G: Molecular genetics of AMD and current animal models. *Angiogenesis* 2007; **10**: 119-132.

25. Yates JRW, Sepp T, Baljinder KM *et al*: Complement C3 variant and the risk of age-related macular degeneration. *N Engl J Med* 2007; **357**: 19-27.
26. Maller JB, Fagerness JA, Reynolds RC, Neale BM, Daly MJ, Seddon JM: Variation in complement factor 3 is associated with risk of age-related macular degeneration. *Nat Genet* 1997; **39**: 1200-1201.
27. Haines JL: C3 R102G polymorphism increased risk of age-related macular degeneration. *Hum Mol Genet* 2008; **17**: 1821-24.
28. Schultz DW, Klein ML, Humpert AJ *et al*: Analysis of the ARMD1 locus: evidence that a mutation in HEMICENTIN-1 is associated with age-related macular degeneration in a large family. *Hum Mol Genet* 2003; **12**: 3315–3323.
29. Stone E M, Braun TA, Russell SR *et al*: Missense variations in the fibulin 5 gene and age-related macular degeneration. *N Engl J Med* 2004; **351**: 346–353.
30. Canter JA, Olson LM, Spencer K *et al*: Mitochondrial DNA polymorphism A4917G is independently associated with age-related macular degeneration. *PLoS ONE* 2008; **3**: e2091.
31. Marmor M, Cabaal L, Shukla S, Hwang JC, Marcus M: Clinical S-cone ERG recording with a commercial hand-held full-field stimulator. *Doc. Ophthalmol* 2004; **108**: 107–114.
32. Humphries MM, Rancourt D, Farrar GJ *et al*: Retinopathy induced in mice by targeted disruption of the rhodopsin gene. *Nat Genet* 1997; **15**: 216-219.
33. Botto M, Dell’Agnola C, Bygrave AE *et al*: (1998) Homozygous C1q deficiency causes glomerulonephritis associated with multiple apoptotic bodies. *Nat Genet* 1998; **19**: 56-59.

34. Humphries,MM, Kiang A-S, McNally N *et al*: Comparative structural and functional analysis of photoreceptor neurons of Rho^{-/-} mice reveal increased survival on C57BL/6J in comparison to 129Sv genetic background. *Vis Neurosci* 2001; **18**: 437-443.
35. Toda K, Bush RA, Humphries P and Sieving PA: The electroretinogram of the rhodopsin knockout mouse. *Vis Neurosci* 1999; **16**: 391-398.
36. Baruah P, Simpson E, Dumitriu IE *et al*: Mice lacking C1q or C3 show accelerated rejection of minor H disparate skin grafts and resistance to induction of tolerance. *Eur J Immunol* 2010; **40**: 1758-67.
37. Punzo C, Kornacker K, Cepko CL: Stimulation of the insulin/mTOR pathway delays cone death in a mouse model of retinitis pigmentosa. *Nat Neurosci* 2009; **12**: 44-52.
38. Schlichtenbrede FC, MacNeil A, Bainbridge JW, Tschernutter M, Thrasher AJ, Smith AJ, Ali RR: Intraocular gene delivery of ciliary neurotrophic factor results in significant loss of retinal function in normal mice and in the Prph2Rd2/Rd2 model of retinal degeneration. *Gene Ther* 2003; **10**: 523-7.
39. (http://www.neurotechusa.com/news_events/pr_2007-04-17).
40. Talcott KE, Ratnam K, Sundquist SM *et al*: Longitudinal study of cone photoreceptors during retinal degeneration and in response to ciliary neurotrophic factor treatment. *Invest Ophthalmol Vis Sci* 2010; **Nov 18** [Epub ahead of print].
41. Mohand-Said S, Deudon-Combe A, Hicks D *et al*: Normal retina releases a diffusible factor stimulating cone survival in the retinal degeneration mouse. *Proc Natl Acad Sci USA* 1998; **95**: 8357-62.

42. Fintz AC, Audo I, Hicks D, Mohand-Said S, Léveillard T, Sahel J: Partial characterization of retina-derived cone neuroprotection in two culture models of photoreceptor degeneration. *Invest Ophthalmol Vis Sci* 2003; **44**: 818-25.
43. Léveillard T, Sahel JA: Rod-derived cone viability factor for treating blinding diseases: from clinic to redox signaling. *Sci Transl Med* 2010; **2**: 26ps16.
44. Cronin T, Raffelsberger W, Lee-Rivera I *et al*: The disruption of the rod-derived cone viability gene leads to photoreceptor dysfunction and susceptibility to oxidative stress. *Cell Death Differ* 2010; **17**: 1199-210.
45. Yang Y, Mohand-Said S, Danan A *et al*: Functional cone rescue by RdCVF protein in a dominant model of retinitis pigmentosa. *Mol Ther* 2009; **17**: 787-95.
46. Klein RJ, Zeiss C, Chew EY *et al*: Complement factor H polymorphism in age-related macular degeneration. *Science* 2005; **308**: 363-364.
47. Edwards AO, Ritter R, Abel KJ, Manning A, Panhuysen C Farrer LA: Complement factor H Polymorphism and age-related macular degeneration. *Science* 2005; **308**: 421-424.
48. Haines JL, Hauser MA, Schmidt S *et al*: Complement factor H variant increases the risk of age-related macular degeneration. *Science* 2005; **308**: 419-421.
49. Navratil JS, Watkins SC, Wisnieski JJ, Ahearn JM: The globular heads of C1q specifically recognize surface blebs of apoptotic vascular endothelial cells. *J Immunol* 2001; **166**: 3231-3239.
50. Trouw LA, Blom AM, Gasque P: Role of complement and complement regulators in the removal of apoptotic cells. *Mol. Immunol* 2008; **45**: 1199-1207.

51. Nauta AJ, Trouw LA, Daha MR *et al*: Direct binding of C1q to apoptotic cells and cell blebs induces complement activation. *Eur. J. Immunol* 2002; **32**: 1726-1736.
52. Portera-Cailliau C, Sung CH, Nathans J, Adler R: Apoptotic photoreceptor cell death in mouse models of retinitis pigmentosa. *Proc Natl Acad Sci USA* 1994; **91**: 974-978.
53. Sunaief JL, Dentchev T, Ying GS, Milam AH: The role of apoptosis is age-related macular degeneration. *Arch Ophthalmol* 2002; **120**: 1435-1442.
54. Rohrer B, Demos C, Frigg R, Grimm C: Classical complement activation and acquired immune response pathways are not essential for retinal degeneration in the rd1 mouse. *Exp Eye Res* 2007; **84**: 82-91.

Titles and Legends to Figures.

Figure 1. Cone electroretinographic responses from wild-type, C1qa^{-/-}, Rho^{-/-} and Rho^{-/-}C1qa^{-/-} mice. The timing of the major positive deflection (the b-wave) is 52 msec in each tracing.

a) Cone ERG responses from C1qa^{-/-} and WT mice at 12 weeks of age. b) The decrease in cone-isolated ERG was highly significant, with $***=P \leq 0.0026$. Cone ERG responses are representative of nine different animals per group.” c) Cone ERG responses were still evident in Rho^{-/-} mice (left panel) with average readings of 33.48 μV (n = 55). However in C1qa^{-/-}Rho^{-/-} mice (right panel), these readings were decreased to an average of 19.86 μV at 12 weeks of age (n = 34).

Figure 2. Comparative retinal histology in wild-type, Rho^{-/-} and Rho^{-/-}C1qa^{-/-} mice.

a) The presence and pattern of cone photoreceptors were analysed in WT, Rho^{-/-} and C1qa^{-/-}Rho^{-/-} mice. Although there was positive peanut agglutinin staining in Rho^{-/-} and C1qa^{-/-}Rho^{-/-} mice at 12 weeks of age, the pattern and distribution of staining appeared radically different in C1qa^{-/-}Rho^{-/-} mice when compared to Rho^{-/-} mice. b) Retinal cryo-sections from 12 week old mice were stained with an antibody specific for blue-sensitive opsin. Strong immunoreactivity was observed in the WT sections, staining blue cone photoreceptors in the central and peripheral aspects of the retina and clearly showing the distribution of cone photoreceptors in the mouse retina (Red: Blue-sensitive opsin; Blue: DAPI-nuclei). Although not as widespread, positive immunoreactivity for blue-sensitive opsin was also evident in

Rho^{-/-} mice. However, in C1qa^{-/-}Rho^{-/-} mice, strong immunoreactivity in cryo-sections for blue-sensitive opsin was not evident.

Figure 3. Quantitative analysis of levels of C1q transcript in normal and Rho^{-/-} mice.

a) Levels of C1qa transcript became significantly up-regulated in the retinas of Rho^{-/-} mice at 30 days when compared to WT mice of the same age. Up-regulation continued up to and including 90 days (n = 3 mice per group and results representative of 3 replicate experiments).

Figure 4. Statistical analysis of cone ERG responses from C3^{-/-}Rho^{-/-} and Rho^{-/-} male and female mice at 3 months of age (P=0.319) (n= 20 per group). The data showed no significant differences between both groups of animals, indicating that cone photoreceptor function was essentially the same in both experimental cohorts.

Data was analysed as mean +/- SD with significance represented by P < 0.05.

Figure 1

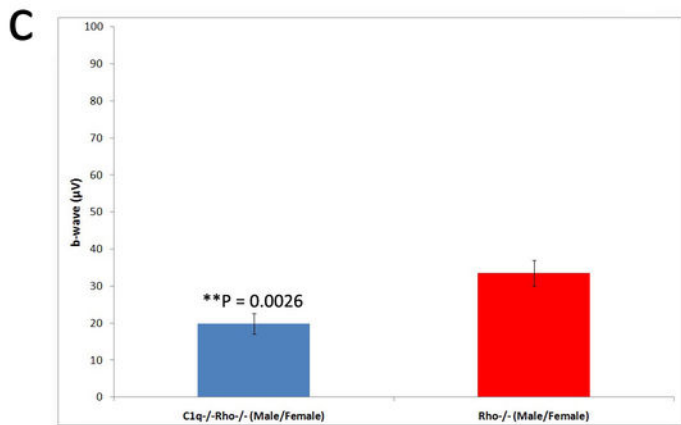
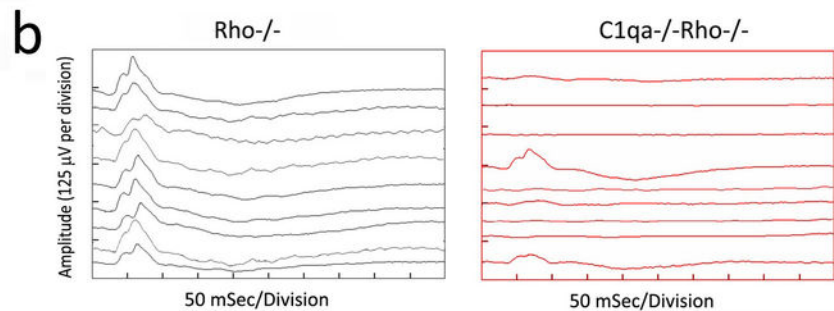
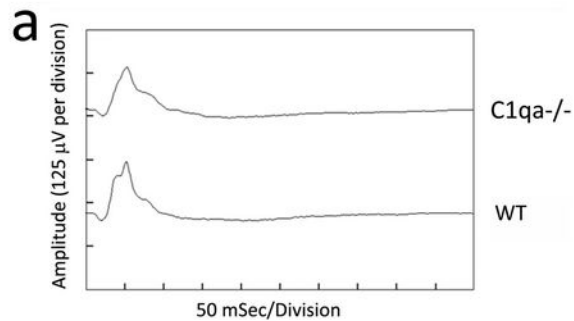


Figure 2

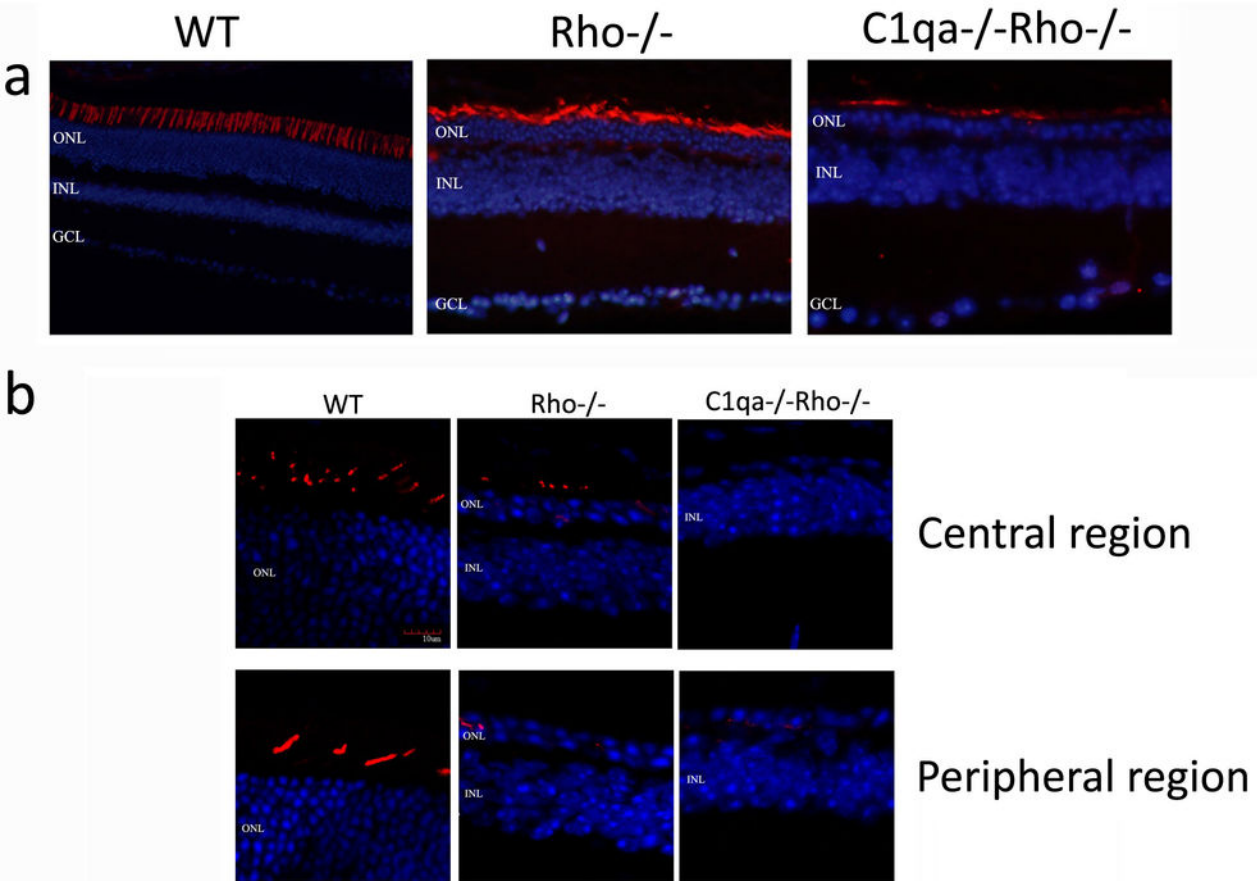


Figure 3

RT-PCR analysis of levels of expression of C1qa in WT and Rho^{-/-} mouse retina

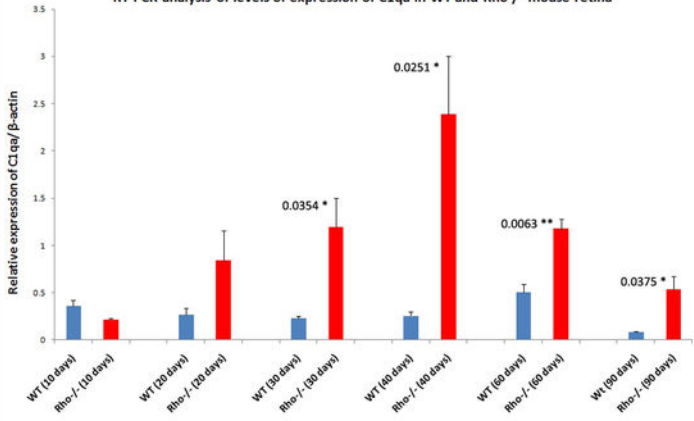


Figure 4

