



HAL
open science

Breakdown study of dc silicon micro-discharge devices

Laurent Schwaederlé, Mukesh Kulsreshath, Lawrence J. Overzet, Philippe Lefauchaux, Thomas Tillocher, Remi Dussart

► **To cite this version:**

Laurent Schwaederlé, Mukesh Kulsreshath, Lawrence J. Overzet, Philippe Lefauchaux, Thomas Tillocher, et al.. Breakdown study of dc silicon micro-discharge devices. *Journal of Physics D: Applied Physics*, 2012, 45, pp.065201. 10.1088/0022-3727/45/6/065201 . hal-00667649

HAL Id: hal-00667649

<https://hal.science/hal-00667649>

Submitted on 4 Oct 2012

HAL is a multi-disciplinary open access archive for the deposit and dissemination of scientific research documents, whether they are published or not. The documents may come from teaching and research institutions in France or abroad, or from public or private research centers.

L'archive ouverte pluridisciplinaire **HAL**, est destinée au dépôt et à la diffusion de documents scientifiques de niveau recherche, publiés ou non, émanant des établissements d'enseignement et de recherche français ou étrangers, des laboratoires publics ou privés.

Breakdown study of DC silicon micro-discharge devices

L Schwaederlé¹, M K Kulsreshath¹, L J Overzet²,
P Lefauchaux¹, T Tillocher¹ and R Dussart¹

¹ GREMI, CNRS/University of Orléans, 14 rue d'Issoudun, BP 6744, 45067 Orléans Cedex 2, France

² PSAL, University of Texas at Dallas, 800 W. Campbell road, RL10, Richardson, TX 75080-3021, USA

E-mail: laurent.Schwaederle@univ-orleans.fr

Abstract. The influence of geometrical and operating parameters on the electrical characteristics of dc micro-cavity discharges provides insight into their controlling physics. We present here results of such a study on silicon based micro-cavity discharge devices carried out in helium at pressure ranging from 100 to 1000 Torr. Different micro-reactor configurations were measured. The differences include: isolated single cavities versus arrays of closely spaced cavities, various cavity geometries (un-etched as well as isotropically and anisotropically etched), various dimensions (100 or 150 μm cavity diameter and 0 to 150 μm depth). The electrode gap was kept constant in all cases at approximately 6 μm . The applied electric field reaches $5 \cdot 10^7 \text{ V} \cdot \text{m}^{-1}$ which results in current and power densities up to $2 \text{ A} \cdot \text{cm}^{-2}$ and $200 \text{ kW} \cdot \text{cm}^{-3}$ respectively. The number of micro-cavities and the micro-cavity depth are shown to be the most important geometrical parameters for predicting breakdown and operation of micro-cavity devices. The probability of initiatory electron generation which is volume dependent and the electric field strength which is depth dependent are respectively considered to be responsible. The cavity shape (isotropic/anisotropic) and diameter had no significant influence. The number of micro-discharges that could be ignited depends on the rate of voltage rise and pressure. Larger numbers ignite at lower frequency and pressure. In addition, the voltage polarity has the largest influence on the electrical characteristics of the micro-discharge of all parameters, which is due to both the asymmetric role of electrodes as electron emitter and the non-uniformity of the electric field resulting in different ionization efficiencies. The qualitative shape of all breakdown voltage versus pressure curves can be explained in terms of the distance over which the discharge breakdown effectively occurs as long as one understand that this distance can depend on pressure.

PACS numbers: 51.50.+v, 52.50.Dg, 52.80.Hc

Submitted to: *JPD*

1. Introduction

For “unique features resulting from their ability to sustain large current densities and power depositions on a continuous basis” [1] and evident reasons of lower cost and simplified operation in comparison with their low-pressure counterparts, high-pressure (about atmospheric pressure) plasma processes are of great interest [2]. In many technological applications, a non-thermal plasma operating in the glow mode is required [3, 4]. However, maintaining such a stable diffuse glow discharge plasma at high pressure is challenging due to their susceptibility to transition to an arc [5]. One way to stabilize such a high-pressure plasma is to spatially confine it to dimensions below about 1 mm, leading to the so-called world of microplasmas. The stable operation of a microplasma can be explained through the pd similarity law, where p and d represent respectively the pressure and the discharge gap (which corresponds to the electrode separation if care is taken to prevent “long-path breakdown”). This Paschen law [6] states that the breakdown voltage depends on pd product instead of depending individually on p and d . At low pressure, stable operation of glow discharges is possible for pd in the range of about 1-10 Torr·cm where the breakdown voltage is minimum. In this way, for stable operation at high pressure, one only needs to decrease the discharge gap while keeping the pd value in the same range to allow ignition at low voltages. Indeed, discharge operation is unstable at high pressure while keeping the same d than in the low pressure case, which correspond to pd values higher than 10 Torr·cm. It’s due to the high current density, particularly in the cathode sheath, which is a source of instability and may lead to the glow-to-arc transition (GAT). Also, the dominance of boundary phenomena in such microplasmas, with small volume to surface ratio compared to low-pressure plasmas probably plays a stabilizing role. However, in spite of pd similarity of the microplasma and its low-pressure counterpart, the current densities in the former one are much higher, making microplasmas not simply a scale down version of a low-pressure plasma.

Many different microplasma types exist depending on the device structure and operating mode. Several reviews have already been published on that topic [7, 8, 9]. The present studied devices are of “MHCD” (Micro Hollow Cathode Discharge) type. That acronym historically refers to a specific mode of discharge operation, the “hollow cathode” mode in which the discharge has a negative differential resistance. The first “MHCD” has been obtained by scaling the well-known hollow cathode discharge to a submillimeter size [10] before it has been shown [11] that the hollow cathode effect was not effective in the MHCD. Thus, that nomenclature might be misleading because that kind of microdischarge is generally operated in the normal or abnormal glow mode. Some authors encourage instead the adoption of names such as “microplasma”, “microcavity plasma” or “microdischarge”.

Despite their interesting properties - stability, high-pressure operation, non-equilibrium, high power density - their small size could drastically limit their range of applications. However, it is possible to enlarge the plasma volume either by arranging such micro-discharges in arrays, by extending it when used as a plasma cathode with

a third electrode positively biased and located some distance away [12] or by using both techniques [13]. One method used to ignite arrays of microdischarges is to limit the current driven by each microdischarge through the use of either individual [14] or distributed [15] ballast resistors. Another way, without use of any ballast, is to “force” the microdischarge to operate in conditions where the slope of the V-I characteristic is positive, that is in an abnormal regime. This is possible by limiting the cathode surface area [10, 16, 17].

The first reported microdischarge device fabricated in silicon consists in a single closed cavity 200-400 μm in diameter and 0.55 mm in depth [18]. Operated in dc and using the silicon substrate as the cathode, thus limiting the cathode area because of the finite cavity depth, it showed a stable operation in Ne and N_2 from a few hundred Torr up to atmospheric pressure. Moreover the V-I characteristic exhibited a positive differential resistance over the entire current and pressure range. It opened the way to operation of silicon based microdischarge arrays. Shi *et al* [15] succeeded in igniting Si-integrated microdischarge arrays (4 x 4) in dc, without limiting the cathode area, by using silicon (resistivity of 1200 $\Omega\cdot\text{cm}$) for anode material as a distributed resistive ballast. Many other studies have been carried out on silicon based microplasma reactors, e.g. [19, 20, 21]. No systematic study of the influence of geometrical and operating parameters on breakdown and operation of microcavity discharges has been done yet. Chen *et al* [20] studied the operation of three different cavity shapes made within silicon with same cross-sectional opening area. The conclusions concerning the influence of geometrical and operating parameters on the operation of the discharge are the following. Whatever the microcavity shape (planar, inverted pyramid or vertical cavity), experiments show that the higher the cathode surface the higher the current driven by the microcavity discharge for a given voltage. It is about one order of magnitude higher for the deepest cavity compared to the non-etched one. The operation of the non-etched cavities has been shown more sensitive to pressure compared to both etched ones, requiring more voltage to drive a given current as the pressure decreases. In the case of arrays, with the same microcavity shapes, the higher the number of cavities, the higher the total current driven for a given voltage. Concerning breakdown voltage, it has only been mentioned that in the case of arrays it does not vary significantly with the array size.

In our lab, we make use of conventional semiconductor micro-fabrication technologies to design micro-cavity reactors integrated in silicon substrate and take advantage of the intrinsically limited cathode area of the etched cavities to ignite arrays of micro-discharges [22]. The features of the present studied microdevices are the use of silicon as the microreactor cathode, the limitation of the cathode area (due to the closed cavity), the opening diameters from 150 to 25 μm and the use of a very thin dielectric thickness ($\sim 6 \mu\text{m}$) inducing an applied electric field as high as $5\cdot 10^7 \text{ V}\cdot\text{m}^{-1}$.

The present study has been undertaken to better understand the influence of geometrical and operating parameters on the breakdown and operation of such microcavity discharges.

2. Experimental set-up

2.1. Micro-reactors

As an example, the upper portion of figure 1 shows the front view of a microreactor consisting in a 1024 microcavities array with opening diameter $D = 100 \mu\text{m}$. The chip is about $1.5 \times 1.5 \text{ cm}^2$. It consists of an electrode/dielectric/electrode sandwich

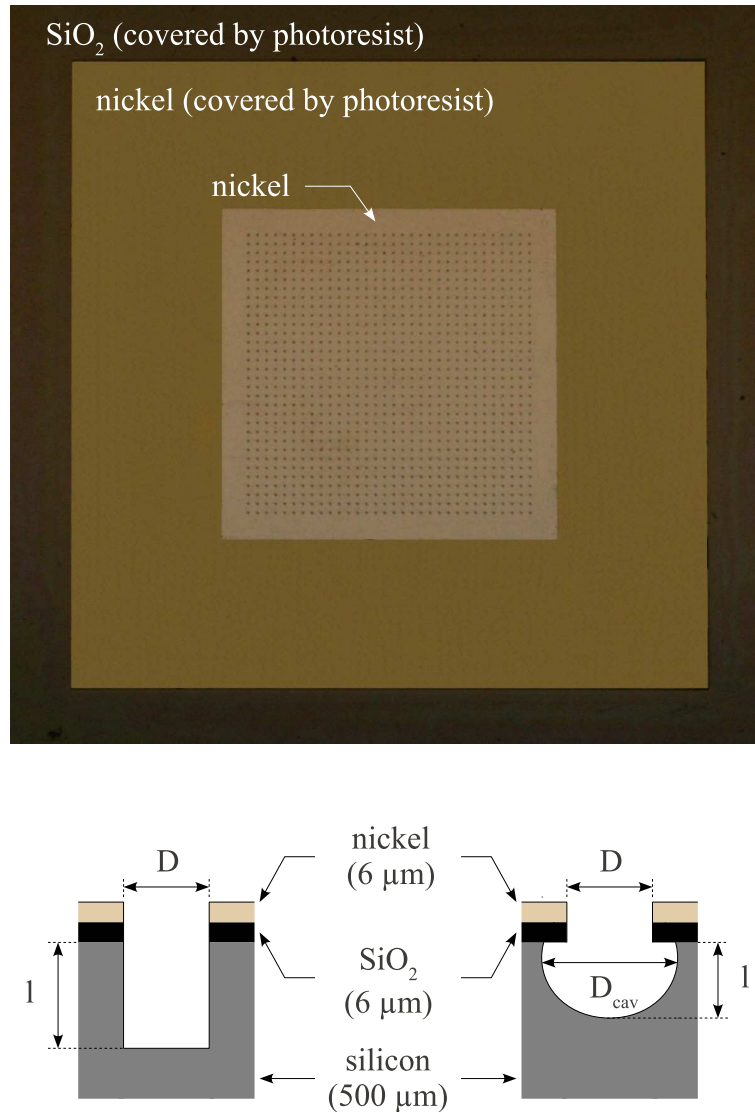


Figure 1. (top) Front view of a 1024 microcavities array with $D=100 \mu\text{m}$; (bottom) cross-sectional view of the structure of both types of cavity.

structure containing cavities. Silicon substrate (n-type, resistivity of $5000 \Omega\cdot\text{cm}$) is used as one electrode and nickel as the other. SiO₂ is used as the dielectric. The thicknesses of layers are about 6, 6 and $500 \mu\text{m}$ for the nickel, the SiO₂ and the silicon respectively. Figure 1 (upper part) shows three different square zones. The inner and intermediate ones are both the nickel layer and the third one is the silicon

oxide layer. Both the intermediate one and the outer one are covered with photoresist to prevent edge breakdown. The fabrication process used has already been detailed [22, 23]. Several micro-reactor configurations are realised as single-cavity, $16 \times 16 = 256$ and $32 \times 32 = 1024$ cavities arrays with different opening diameter and few others which have not been used in the present study. The cavity opening diameter is ranging from 25 to 150 μm . For array configurations, the distance between cavities, from edge to edge, is the same than the corresponding cavity diameter. The cavity shape can be isotropic or anisotropic (figure 1 (bottom)) depending on the etching process used [22]. Using the anisotropic process, it is possible to etch cavities to a depth of a few hundred microns or even through the silicon substrate. The volume of such a cavity is of the order of a few 10^{-3} mm^3 .

2.2. Electrical circuit and experimental procedure

The experiments are carried out in a ~ 2 -liter stainless steel cylindrical chamber. It is equipped with a pumping system (diaphragm and molecular pumps) allowing the chamber to be evacuated to few 10^{-6} mbar. A gas input system allows experiments in different gases or mixture of gases (proportions controlled by partial pressure). Pressures could be set from a few 10's to 1000 Torr. It is also equipped with an electrical input for the connection with the power supply / measurement circuit, a few windows for the operating control of the discharge and optical diagnostic and a micro-reactor positioning system. In the present study, experiments are performed with helium within the pressure range 100-1000 Torr. A Baratron gauge and a Pirani gauge are used for measurement of working and base pressures respectively.

The micro-reactors are powered using a dc power supply. The electrical set up is complemented with equipment for measurement of electrical parameters. The powering / measurement electrical circuit is shown in figure 2. The powering part includes a

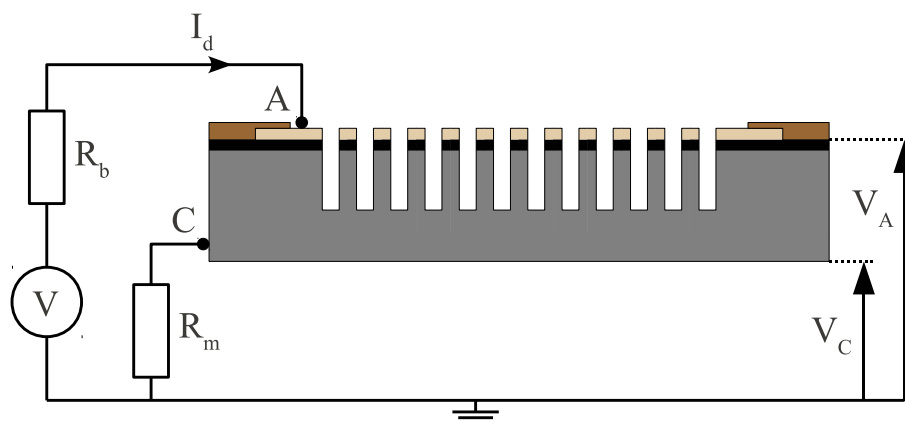


Figure 2. Powering and measurement circuit.

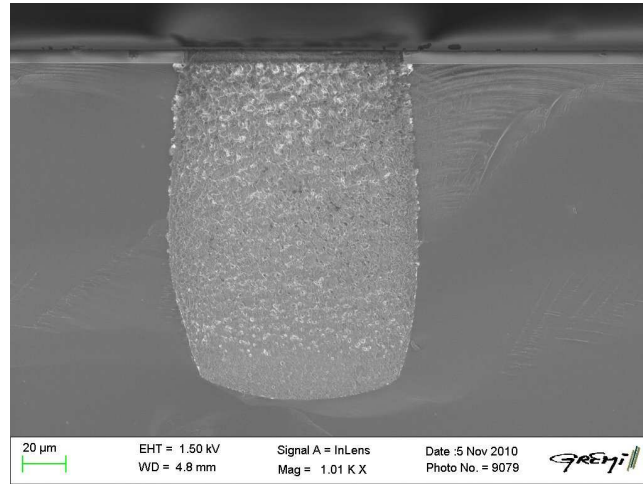
1500 V / 150 mA dc power supply unit and a ballast resistor R_b to limit the current. For the present experiments $R_b = 39 \text{ k}\Omega$. The power unit can be controlled manually or

using an external function generator. The function generator was used to generate a triangular voltage signal for acquiring the V-I characteristics and for breakdown voltage measurements. To get the V-I characteristics for both increasing and decreasing current, the discharge voltage and current are acquired during one period of the triangle wave. For the determination of the breakdown voltage, the acquisition of discharge voltage and current during eight periods was made in order to get an average value, for each pressure. The signal frequency used for V-I characteristic acquisition f is either 50 mHz or 200 mHz depending on the study. For breakdown voltage determination, $f = 200$ mHz in all cases which corresponds to a voltage rate of about $200 \text{ V}\cdot\text{s}^{-1}$. The measurement part of the circuit includes a resistance in series with the micro-reactor for its current measurement $R_m = 1 \text{ k}\Omega$, a digital oscilloscope and high voltage probes for voltage measurements. The anode V_A and cathode V_C voltages are recorded. The discharge voltage $U_d = V_A - V_C$ and current $I_d = V_C/R_m$ are deduced from those measurements. On the breakdown voltage versus pressure curve $V_{br} = f(P)$, each plotted point represents the average of eight voltage values. The error bars, shown on all graphs, are considered as random errors and obtained considering gaussian distribution of experimental values and taking the width of the approximated distribution profile. That uncertainty in measurement is calculated individually for each pressure to check for a possible dependence of the distribution width on pressure.

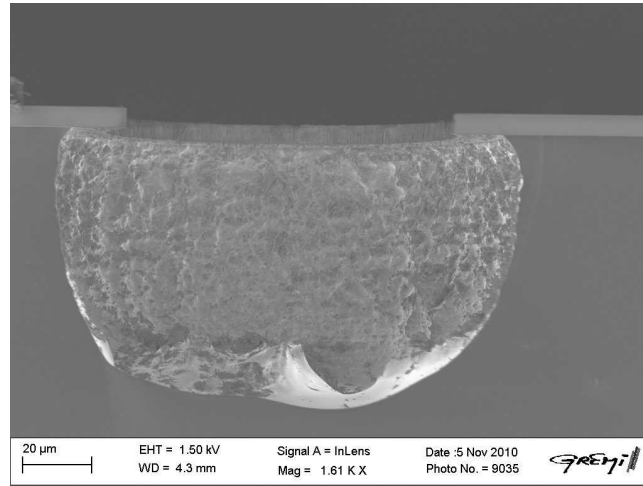
3. Results

3.1. Geometrical parameters

3.1.1. Cavity shape To investigate the influence of the cavity shape on the operation of micro-reactors, we have tested two micro-reactors with the same configuration, that is arrays of $32 \times 32 = 1024$ cavities with opening diameter $D = 100 \text{ }\mu\text{m}$, but with different cavity shapes. One is anisotropically etched and the other isotropically etched as shown on figure 3 after operation. Note that the complete micro-reactor structure (electrode set separated with dielectric) is not visible in the pictures because the nickel electrode has been removed during the cleavage of the micro-reactors. The upper layer corresponds to the dielectric (SiO_2) and the lower one, holding the cavity is the Si electrode. The geometrical features of cavities of both types of micro-reactors are indicated in table 1. For calculation of each cavity cathode surface area and cavity volume, they are considered either as cylindrical (anisotropic cavity) with diameter $D_{cav} = D = 100 \text{ }\mu\text{m}$ and depth $l = 150 \text{ }\mu\text{m}$ or as hemispheric (isotropic cavity) with diameter $D_{cav} = 130 \text{ }\mu\text{m}$ (due to a symmetrical undercut of about $15 \text{ }\mu\text{m}$). The cathodic surface and volume of the isotropic cavity are both half the anisotropic ones. Breakdown voltage measurements have been done in helium at a pressure ranging from 50 to 1000 Torr. The electrodes separation (dielectric thickness) is about $6 \text{ }\mu\text{m}$ for all the micro-reactors tested in the present study which corresponds to a range of the pd product, for the anisotropic case of 0.03-0.6 Torr-cm. Actually, these values are



(a)



(b)

Figure 3. SEM cross-section views of anisotropic (a) and isotropic (b) $D = 100 \mu\text{m}$ opening diameter cavity after operation.

Table 1. Geometrical features of the cavities (shown in figure 3) of the micro-reactors ($32 \times 32 = 1024$ with $D = 100 \mu\text{m}$) used for cavity shape study ; D : opening diameter, d_n : distance to the nearest neighbor cavity, D_{cav} : inner diameter, l : depth, S_{cath} : wall surface (cathode surface), V : volume.

D [μm]	d_n [μm]	cavity type	D_{cav} [μm]	l [μm]	S_{cath} [mm^2]	V [mm^3]
100	100	anisotropic	100	150	0.055	$1.18 \cdot 10^{-3}$
100	100	isotropic	130	75	0.027	$0.58 \cdot 10^{-3}$

given as an indication but are not well defined because of the non-uniformity of the electric field. For that reason and the non-similarity of electric field of the different studied cases, the breakdown voltage curves are presented with respect to pressure. In the isotropic case, due to an undercut of about fifteen micrometers and if we consider

the electrode gap as the shortest distance between electrodes, i.e. $d \sim 20 \mu\text{m}$, the corresponding pd range is 0.2-2 Torr·cm. With respect to the well-known Paschen's curve for breakdown voltage, in the case of parallel plane electrodes, in helium gas, we are located, in both cases in the region of the left branch ($(pd)_{min}^{He} \simeq 5 \text{ Torr}\cdot\text{cm}$). The figure 4 shows the averaged breakdown voltages V_{br} versus pressure P for both types of micro-reactors. We can immediately note that, although the cavity shapes

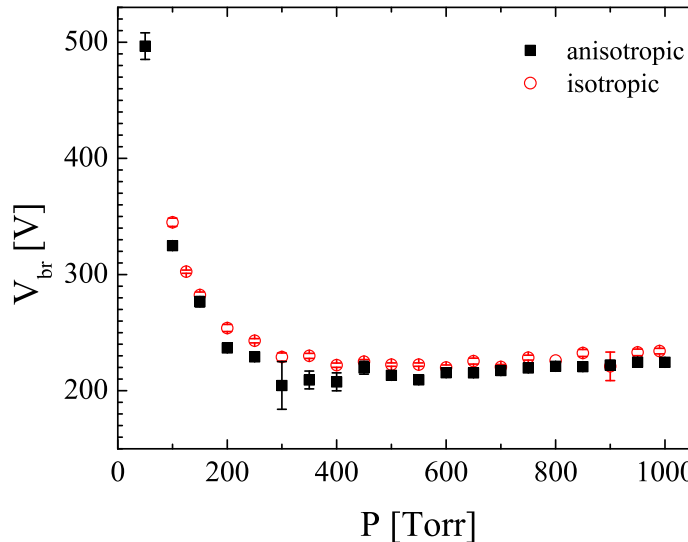
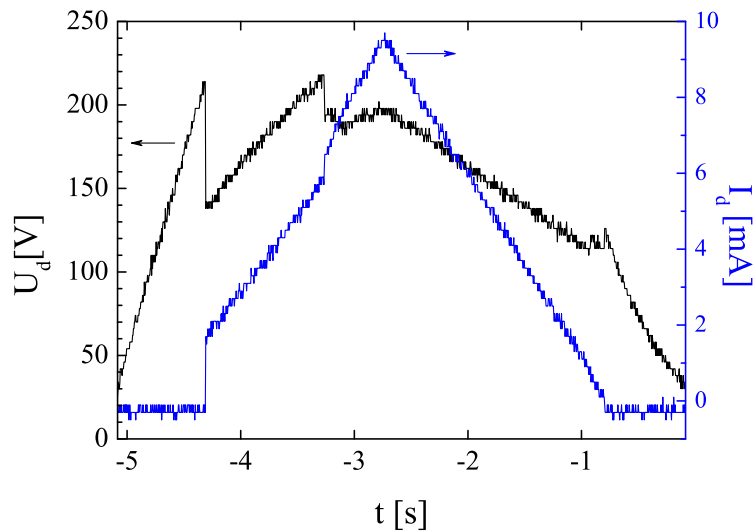
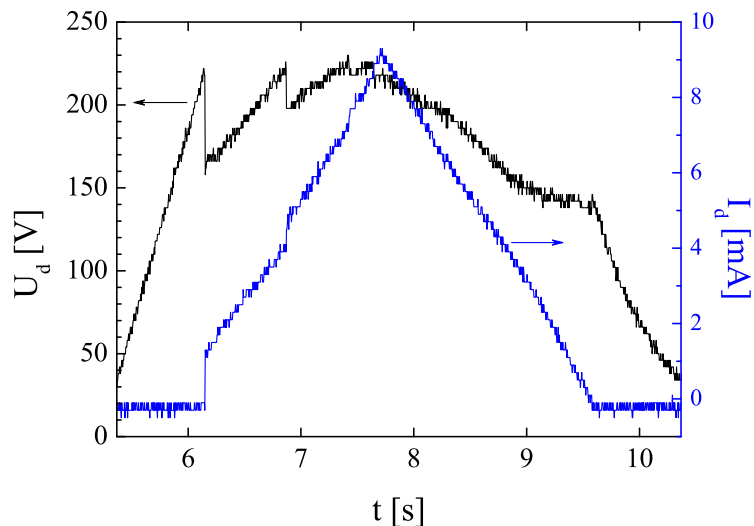


Figure 4. Breakdown voltage V_{br} versus pressure P for the two micro-reactors (1024 array with $D = 100 \mu\text{m}$) with different cavity shapes: anisotropic and isotropic.

are very different, the corresponding breakdown curves versus pressure are very similar and match quite well, with a small tendency for higher values for the isotropic case. Generally speaking, during each voltage period, a few micro-discharges ignite one after the other and operate together at the highest driven current, which ranges between a few mA to 20 mA maximum (in order to not damage the micro-reactors). Their number varies from one to five and remains very small with respect to the total number in the arrays (1024). For determination of breakdown voltage curves, only the first breakdown voltage values of each ramp have been used. Figure 5 and Figure 6 show the discharge voltage and current versus time and the corresponding V-I curves, obtained in He at $P = 500 \text{ Torr}$ for anisotropic and isotropic cavity micro-reactors respectively during one period of powering voltage signal. There are similarities in both cases. First, after breakdown has occurred, the micro-discharge enters in an abnormal glow regime, with a linear increase of discharge voltage with current. The immediate entrance in abnormal regime (which is one of the necessary conditions for operation of micro-discharge array [17]) is due to the intrinsic limited coverage of the cathode surface inside the micro-cavity. The extension of the cathode sheath area being limited by the cavity surface, the discharge current I_d can only increase if the externally applied voltage increases. Second, the abnormal regime allows successive ignition of a few micro-discharges in both cases.



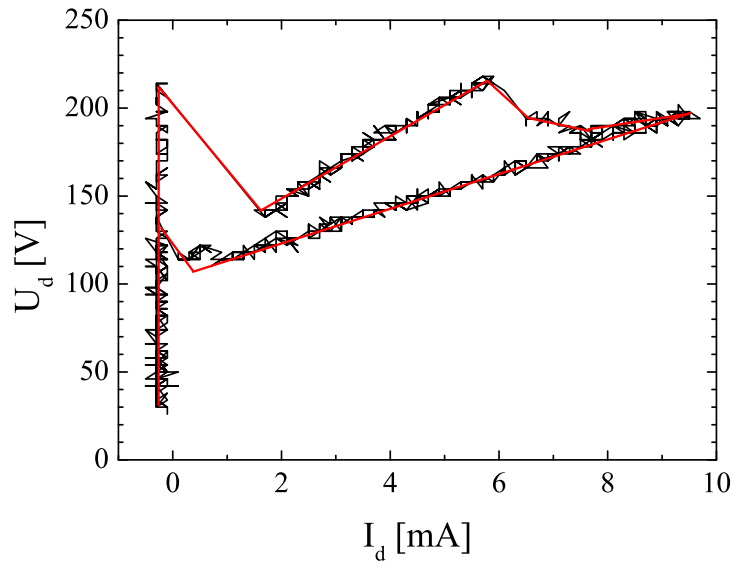
(a) Anisotropic



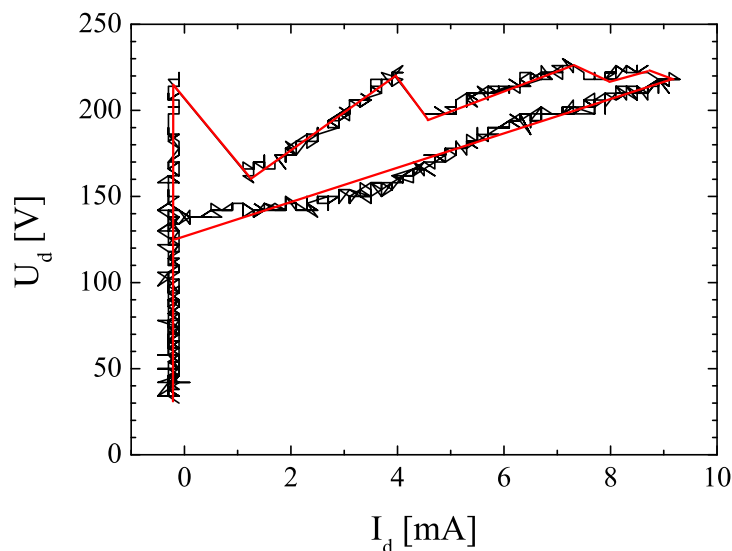
(b) Isotropic

Figure 5. Discharge voltage and current versus time for the 1024, $D = 100 \mu\text{m}$ cavities array micro-reactor, in both anisotropic (a) and isotropic (b) cases, during a period of the voltage power supply ($f = 200 \text{ mHz}$, $T = 5 \text{ s}$), in He at $P = 500 \text{ Torr}$.

We can notice that, even if the number of ignited discharges remains small in both cases, the tendency in the isotropic case is to ignite more micro-discharges (generally, two times more: 4 compared to 2). On the other hand, the voltage drop after the successive ignitions is in general lower in the isotropic case, which is characterized by an abnormal regime whose differential resistance is slightly higher ($r \sim 25 \text{ k}\Omega$) compared to the anisotropic cavity ($r \sim 17 \text{ k}\Omega$). That difference in differential resistance might be due to the smaller cathode surface in the case of isotropic cavities (steeper abnormal regime in that case). This can explain the slightly higher number of micro-discharges ignited in the isotropic case because it is faster in that case to reach again the breakdown



(a) Anisotropic



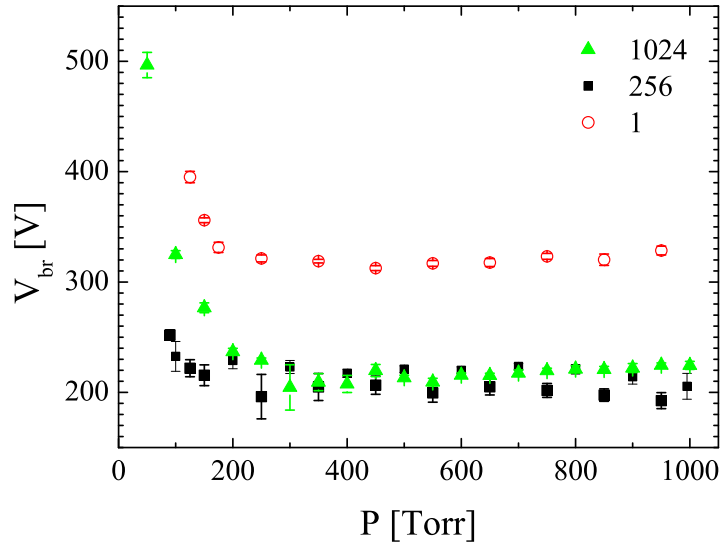
(b) Isotropic

Figure 6. IV curves for the 1024 $D = 100 \mu\text{m}$ cavities array micro-reactor, in both anisotropic (a) and isotropic (b) cases, during a period ($f = 200 \text{ mHz}$, $T = 5 \text{ s}$), in He at $P = 500 \text{ Torr}$.

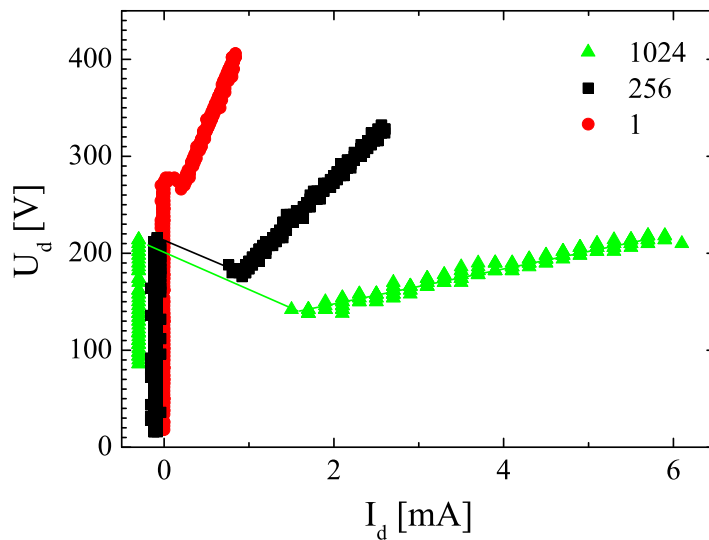
voltage. The voltage drop after breakdown, i.e. the gap between breakdown voltage and the sustaining voltage immediately after breakdown, together with the differential resistance of the abnormal regime are key parameters for ignition of micro-discharges in parallel. But those differences do not seem to come as much from the cavity shape (anisotropic/isotropic) as from the available surface area of the cathode surface. Indeed, as indicated in table 1, the cathode surface in the isotropic case is half of that in the anisotropic case and Dufour *et al.* [17] have shown that the smaller the cathodic surface,

the more emphasized the abnormal glow regime. Concerning the ignition of micro-cavity discharges in array configuration, it is worthwhile to say that we could probably control the number of ignited micro-discharges with variation of the slope and amplitude of the voltage ramp.

3.1.2. Micro-reactor configuration The influence of the microreactor configuration on both breakdown and operation of micro-discharges has been studied using three micro-reactors consisting of identical cavities but with different configurations: 1024 cavities array, 256 cavities array and single cavity. The cavities are identical in shape (anisotropic) and dimensions (diameter $D = 100 \mu\text{m}$, depth $l = 150 \mu\text{m}$). The breakdown voltage curves versus pressure obtained in helium for pressure ranging from 100 to 1000 Torr are shown in figure 7(a). Qualitatively the three curves have the same shape and also the same shape as those obtained in the study of the cavity shape. Nevertheless, the values of breakdown voltage for the single-cavity configuration is about 100 V higher than that for the two array configurations over the full pressure range. Two hypotheses may be given to explain this observation. The first one originates from the fact that gaseous electrical breakdown is a stochastic process. That is to say: its actual occurrence depends on the probability that an initiatory/seed electron will be available and that it will lead to an avalanche of sufficient size for the development of a conductive breakdown channel in the gas. That initiatory electron must be available in a suitable location (preferably close to the cathode) for maximum electron amplification. As we already stated, the measurement of the breakdown voltage is carried out by powering the micro-reactor using an increasing voltage ramp. The rise time is 2.5 s. During this period, the discharge can only be ignited if the electron density reaches a critical value. The real time needed to reach that critical value after the voltage has reached the minimum static breakdown voltage, V_s , that is the lowest breakdown voltage which would ignite the discharge after a sufficiently long application time, is the breakdown delay time [24]. It is statistically distributed and consists of two parts $t = t_s + t_f$: the statistical time t_s which is the time that elapses from the moment when V_s is reached until an initiatory electron appears in the high-field region to initiate the discharge, and the formative time t_f which is the time required for the breakdown to develop once initiated. The overvoltage is the difference ($V_p - V_s$) between the peak voltage V_p , at which breakdown is measured, and the minimum static breakdown voltage V_s . The statistical time t_s depends on the amount of preionization in the gap which in turn depends upon the size of the gap and the sources producing the seed electrons. In our case, no external source exists, and the initiatory electrons originate only by natural external ionizing radiation, i.e. cosmic rays and natural radioactivity of materials. The rate of initiatory electron generation by such external radiation is about $4 \cdot 10^{-5} \text{ electrons} \cdot \text{s}^{-1} \cdot \text{cm}^{-3} \cdot \text{Pa}^{-1}$ in most gases [25]. At atmospheric pressure ($\sim 10^5 \text{ Pa}$), the electron generation rate in each cavity with a volume of about $\sim 10^{-3} \text{ mm}^3$ is about $4 \cdot 10^{-6} \text{ s}^{-1}$ which corresponds to a prohibitively long statistical time. In the case of the 1024 cavities microreactor, the electrons generation rate in the volume corresponding



(a)



(b)

Figure 7. Electrical characteristics of three different micro-reactor configurations consisting of same cavities (anisotropic, $D = 100 \mu\text{m}$, $l = 150 \mu\text{m}$): (a) breakdown voltage versus pressure and (b) V-I curves at $P = 500 \text{ Torr}$, in helium, for $f = 200 \text{ mHz}$.

to the sum of the 1024 cavity volumes (which are powered in parallel) is about 10^3 higher. The probability for initiatory electron generation in the array case is 10^3 higher and the statistical time t_s in that case could be reduced compared to the single cavity case. This could induce a lower overvoltage and explain the difference of breakdown voltage in figure 7. However, that much smaller statistical for single cavity should be accompanied by larger error bars than for 1024 cavities what is not observed. That huge difference in initiatory electrons generation rate and consequently in the statistical time

between array and single case is not met in the breakdown voltage. This could be due to the fact that t_s decreases with increasing overvoltage [24]. The second hypothesis is the possible presence of electron field emission. The voltage, just before breakdown is about 220 V for both the 1024 and 256 microcavities array and is applied through a 6 μm thick dielectric which corresponds to an electric field of about $5 \cdot 10^7 \text{ V}\cdot\text{m}^{-1}$. The possible presence of cathode surface ripples (scalping) of few tenth of microns, due to alternance between etching and passivation steps in the etching process [23], would enhance locally the electric field and could induce electron field emission. The probability to encounter such surface irregularities might be higher in the array case compared to the single cavity case. The field emission effect could reduce the statistical time and consequently the overvoltage by providing seed electrons.

The figure 7(b) presents the V-I curves corresponding to the three micro-reactors. As already observed on figure 7(a), the breakdown voltage of both array micro-reactors are similar to each other, of the order of 220 V and much less than that of the single cavity micro-reactor. As expected from the limitation of the cathode area, the discharge enters in an abnormal regime in the three cases. But this abnormal regime depends on the configuration. It is less pronounced when the number of cavities increases. In other words, the differential resistance characterizing the abnormal regime in which the first ignited discharge enters, decreases as the number of cavities increases. Moreover, the voltage drop after breakdown differs depending on the configuration. The field emission effect by itself could explain as an additional electron source both observations. For exactly the same cavity features, depending on the micro-reactor configuration, the maximum current driven by a single cavity is quite different. It is 1, 2.5 and 6 mA for the 1, 256 and 1024 cavities micro-reactor respectively. It is worthy to note that, despite exhibiting a smaller voltage drop and a larger slope in the abnormal regime than the 1024 cavity array, only one micro-discharge in the 256 cavity array ignited. We speculate that this could be due to the stochastic nature of gas breakdown.

3.1.3. Cavity opening diameter Here we report results obtained varying the cavity opening diameter. In the case of anisotropically etched cavities, the opening diameter is equivalent to the inner cavity diameter. The influence of that parameter on the electrical discharge characteristics has been studied using a multi-diameter micro-reactor consisting in anisotropic cavities $l = 150 \mu\text{m}$ deep. For that case, two diameters $D = 100$ and $150 \mu\text{m}$ have been tested. The geometrical characteristics of both cavities are indicated in table 2. For surface and volume calculations, the cavity was considered to be cylindrical. The corresponding breakdown curves with respect to pressure and the I-V curves at 500 Torr are shown figure 8(a) and figure 8(b) respectively. The breakdown voltage curves match quite well over the full pressure range. For that type of cavity (anisotropic $l = 150 \mu\text{m}$ deep), experiments show that the cavity opening diameter does not influence the breakdown voltage. 2D axisymmetric electric field simulation using the finite element method (FEMM [26]) shows that opening diameter does not influence the geometrical electric field strength distributions significantly. The I-V curves of

Table 2. Geometrical features of the cavities of the two micro-reactors ($16 \times 16 = 256$) used for cavity opening diameter study; D : opening diameter, d_n : distance to nearest neighbor cavity, l : depth, S_{cath} : wall surface area (cathode surface), V : volume.

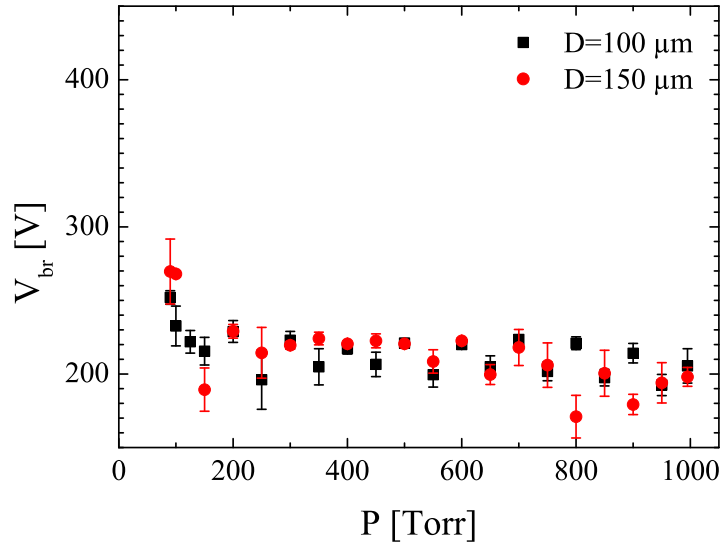
D [μm]	d_n [μm]	l [μm]	S_{cath} [mm^2]	V [mm^3]
100	100	150	0.055	$1.18 \cdot 10^{-3}$
150	150	150	0.088	$2.65 \cdot 10^{-3}$

figure 8(b) show that a single micro-discharge ignites in both cases and the abnormal regime in which it enters does not depend on diameter. However, we also observed in other experiments, considering diameter ranging from 25 to 150 μm that opening diameter does have influence on ignition. The smaller diameter cavities tend to ignite first at higher pressures while bigger diameter cavities ignite preferentially at lower pressures.

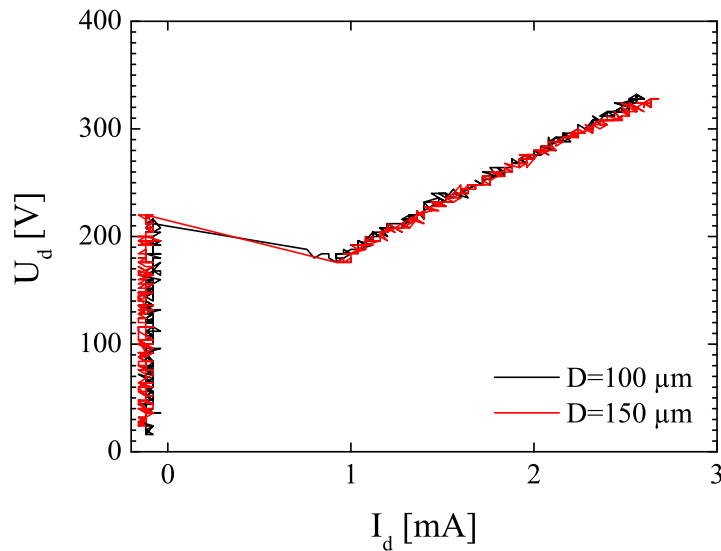
3.1.4. Cavity depth The influence of cavity depth has been tested using two micro-reactors having the same configuration (1024 cavities arrays, diameter $D = 150 \mu\text{m}$, but with different cavity depths, $l = 70 \mu\text{m}$ and $l = 0 \mu\text{m}$ (non-etched)). The breakdown voltage curves between 100 and 1000 Torr and the corresponding I-V characteristics at 500 Torr are shown in figure 9. What is quite obvious is the much (60-70 V) lower breakdown voltage for the non-etched (0 μm deep) cavity microreactor compared to the etched one. It is approximately 160 V over the pressure range (200-1000 Torr), the curve shape being qualitatively the same as that of the etched cavity. Some effect must compensate the higher statistical time expected in the non-etched case due to a lower electron generation probability (because of the smaller cavity volume) which should have increased the breakdown voltage. The most straightforward explanation could come from the difference between electric field strength distribution in the etched and non-etched cases. 2D axisymmetric simulation of geometrical (before breakdown) electric field using the finite element method [26] shows similar electric field strength distributions for voltage drop V_{ac} between electrodes of 225 and 160 V for the 70 μm deep and non-etched cavities respectively. Figure 10 shows the electric field strength distribution with isovalues in the range $0 - 5 \cdot 10^6 \text{ V}\cdot\text{m}^{-1}$. The darker zone thus corresponds in both cases to an electric field strength higher than $5 \cdot 10^6 \text{ V}\cdot\text{m}^{-1}$. From that plot, it can be seen that the electric field distributions are quite similar in both cases. Compared to the non-etched cavity, 65 V more in voltage drop between electrodes is required for the etched cavity to get similar electric field distribution. They could consequently provide similar conditions for electron multiplication.

3.2. Operating parameters

3.2.1. Rate of the voltage ramp All I-V curves presented in the last sections are obtained by applying a triangular voltage waveform to the micro-reactors and acquiring



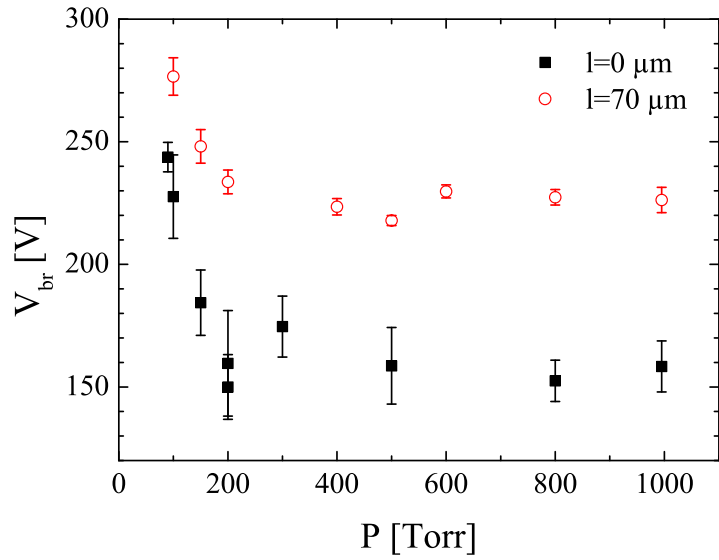
(a)



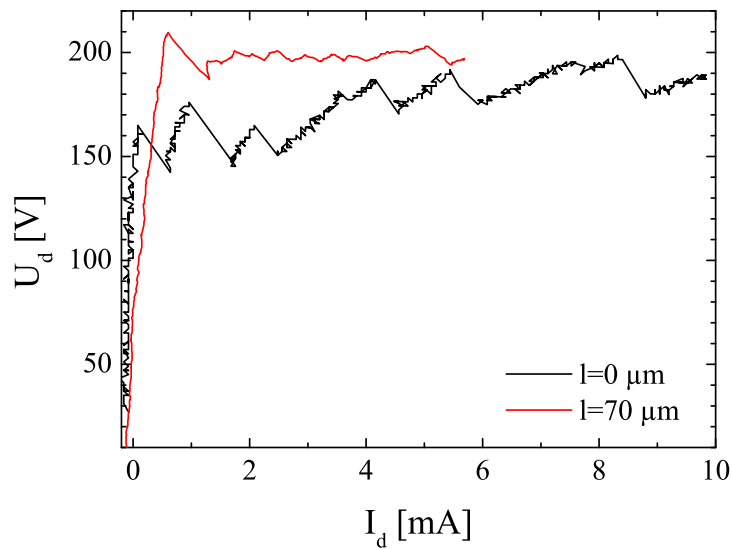
(b)

Figure 8. Electrical characteristics of two 256 cavity arrays having the same cavity shape and depth (anisotropic, $l = 150 \mu\text{m}$) but different diameters ($D = 100$ and $150 \mu\text{m}$): (a) breakdown voltage versus pressure and (b) I-V curves at 500 Torr, in helium, for $f = 200$ mHz.

the discharge voltage and current signals over one period. Therefore, we have investigated the influence of the voltage rate of rise on the I-V characteristics by varying the waveform frequency (period) while keeping the amplitude constant. Measurements have been carried out using a 1024 array of $D = 100 \mu\text{m}$ isotropic cavities as shown on figure 3(b). Figure 11 is a plot of the I-V curves, obtained for two different frequencies, $f = 50$ and 200 mHz, in He at 500 Torr. Those waveform frequencies correspond to



(a)



(b)

Figure 9. Electrical characteristics of two 1024 cavities arrays with same cavity shape and diameter (anisotropic, $D = 150 \mu\text{m}$) but different depths $l = 70$ and $0 \mu\text{m}$: (a) breakdown voltage versus pressure and (b) V-I curves at $P = 500$ Torr, in helium, for $f = 200$ mHz.

waveform period $T = 20$ and 5 seconds respectively, and voltage rise rates of $60 \text{ V}\cdot\text{s}^{-1}$ and $240 \text{ V}\cdot\text{s}^{-1}$ respectively. First, the number of micro-discharges which ignite depends on the voltage rate of rise. It increases with decreasing rate of rise: 3 cavities ignited for $f = 200$ mHz while 8 ignited for 50 mHz. The longer the waveform period, the larger the number of ignited microdischarges. This can be explained through the statistical generation time t_s (§ 3.1.2). For the same initiating electron generation rate from natural

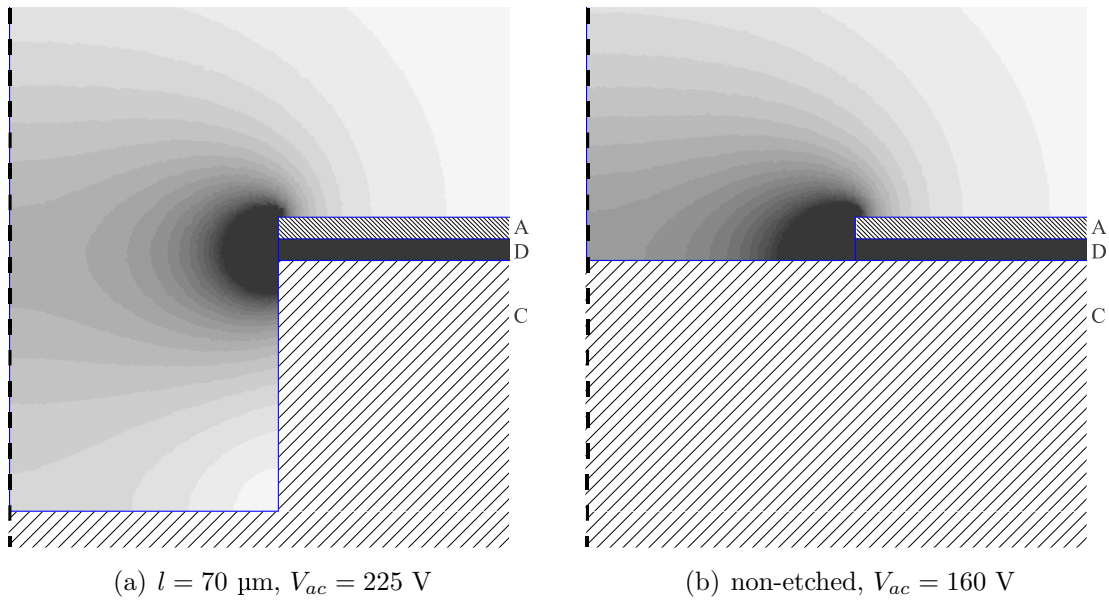


Figure 10. 2D geometrical electric field in a single cavity with diameter $D = 150 \mu\text{m}$; A (nickel), D (SiO_2) and C (silicon) stand for anode, dielectric and cathode respectively; the dotted line represents the cylindrical symmetry axis; the darker zone in the electric field strength distribution corresponds to values higher than $5 \cdot 10^6 \text{ V} \cdot \text{m}^{-1}$.

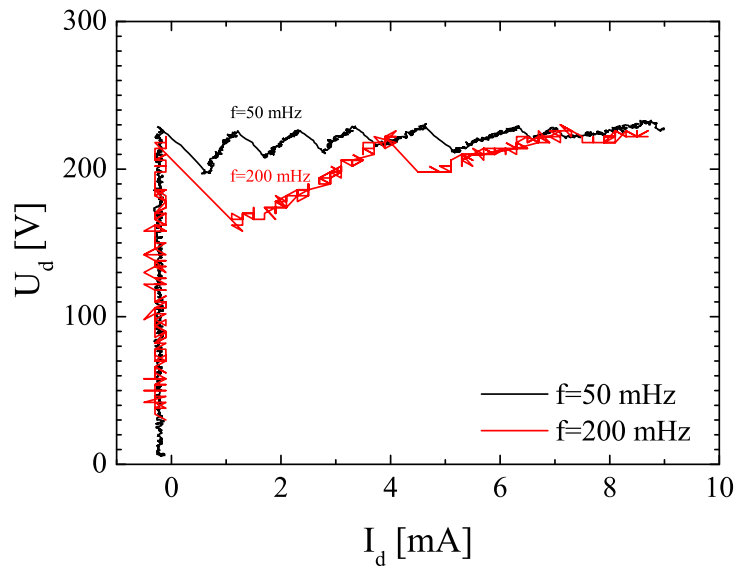
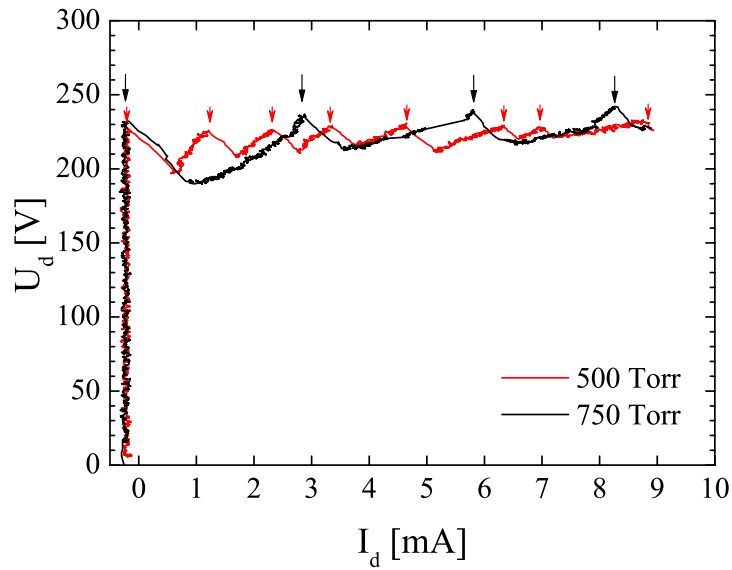


Figure 11. I-V characteristics of a 1024 cavities array micro-reactor with isotropically etched cavity with diameter $D = 100 \mu\text{m}$ (Figure 3(b)) obtained in helium at $P = 500 \text{ Torr}$ for two different voltage signal frequencies $f = 200 \text{ mHz}$ ($T = 5 \text{ s}$) $f = 50 \text{ mHz}$ ($T = 20 \text{ s}$).

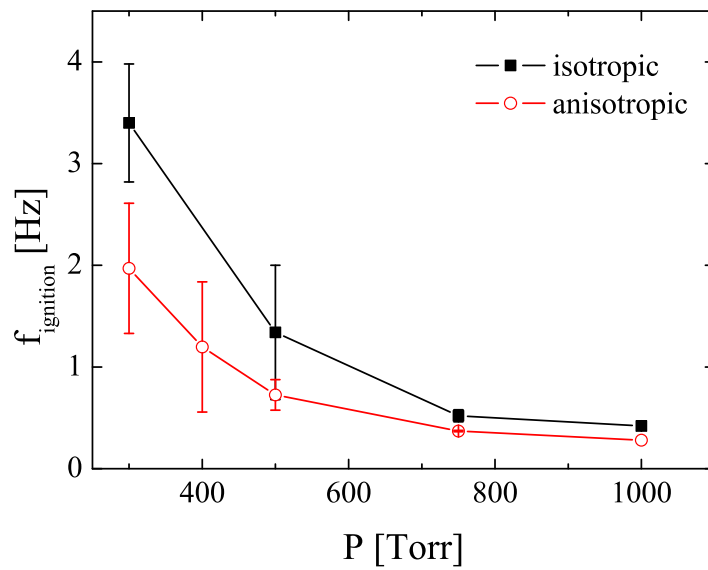
sources (same microreactor configuration, same cavity volume, same pressure), the probability of appearance of electrons is higher in the case when the voltage application time is longer.

3.2.2. Pressure To test the influence of pressure on operation of micro-reactors, we used the same micro-reactor as in section 3.2.1. The I-V characteristics have been obtained in helium for pressure ranging from 100 to 1000 Torr from which the I-V curves at two representative pressures have been plotted in figure 12(a). Here, the waveform frequency is $f = 50$ mHz. Only the increasing phase of the voltage waveform is shown in figure 12 (that is half the period: $T/2 = 10$ s) in order to emphasize the effect on micro-discharge ignition. For the same voltage rate of rise (same signal frequency $f = 50$ mHz and same amplitude), the number of micro-discharges which ignite (indicated by arrows) during that time interval varies with pressure, more ignite at lower pressure. The time interval between successive ignitions being quite constant at a given pressure, we can speak in terms of ignition frequency. In other words, the ignition frequency decreases as the pressure increases as shown in figure 12(b). That tendency has also been observed for anisotropic cavities. The efficiency of the ionization process is known to depend on the reduced electric field, E/n , which decreases with increasing pressure as we observed.

3.2.3. Polarity All the results have been obtained so far by biasing negatively the silicon (what we will term “direct” polarity). As we explained in section 1, the reason is it takes advantage of the inherent limitation of the cavity surface area to force the micro-discharge to enter an abnormal glow regime and ignite many micro-discharges in parallel. We studied the effect of polarization on the electrical characteristics of micro-reactors and the results obtained using a single cavity (anisotropic, $D = 100$ μm , $l = 150$ μm) are presented in figure 13. The breakdown voltage is clearly higher over the full pressure range for reverse polarization. By reversing polarities, we change the cathode from silicon to nickel. It is known that the cathode material and topography affects the breakdown voltage. The secondary emission coefficient, γ , of the material, which provides information on the efficiency of electron emission from the cathode due to ion bombardment, can have a large impact on the breakdown voltage [27]. The surface roughness of the nickel layer and silicon cavity might also influence the electron emission and consequently the breakdown voltage. It is noteworthy that these results were obtained using a previously tested microreactor rather a new one. Indeed, the cathode surface topography evolves with operation time and may give results which have some level of variance. A rougher surface in the used microreactor case could enhance the emission of electrons from the cathode surface through field emission, thus reducing the breakdown voltage as observed in figure 13(a). On the other hand, we note the close correlation to figure 7(a). This indicates that the single cavity of these experiments was not unduly affected. In addition, it has already been shown [28] that the electrode polarity, when using non-uniform field, could have a large influence on the breakdown voltage. Concerning the I-V characteristics, first, the two different polarizations give two different shapes of curves. Compared to the direct polarization where the discharge is clearly in an abnormal glow regime identified by its positive slope I-V relationship, the reverse polarity is clearly in a normal glow regime as can be seen by the nearly zero slope of the I-V relationship and was expected. It is due



(a)



(b)

Figure 12. Influence of helium pressure on ignition of a 1024 cavities array micro-reactor with isotropically etched cavities with diameter $D = 100 \mu\text{m}$ and depth $l = 150 \mu\text{m}$ (Figure 3(b)): (a) V-I characteristics (the arrows indicate micro-cavity discharge ignition: the small ones for 500 Torr and long ones for 750 Torr), (b) microcavity discharge ignition frequency, for a same voltage rate ($f = 50 \text{ mHz}$).

to the possibility for the discharge, in the reverse polarity case compared to the direct one, to spread over the cathode surface when increasing current, keeping constant the current density. Second, the order of magnitude of the maximum current driven by the single micro-discharge are very different depending on polarities. It is approximately

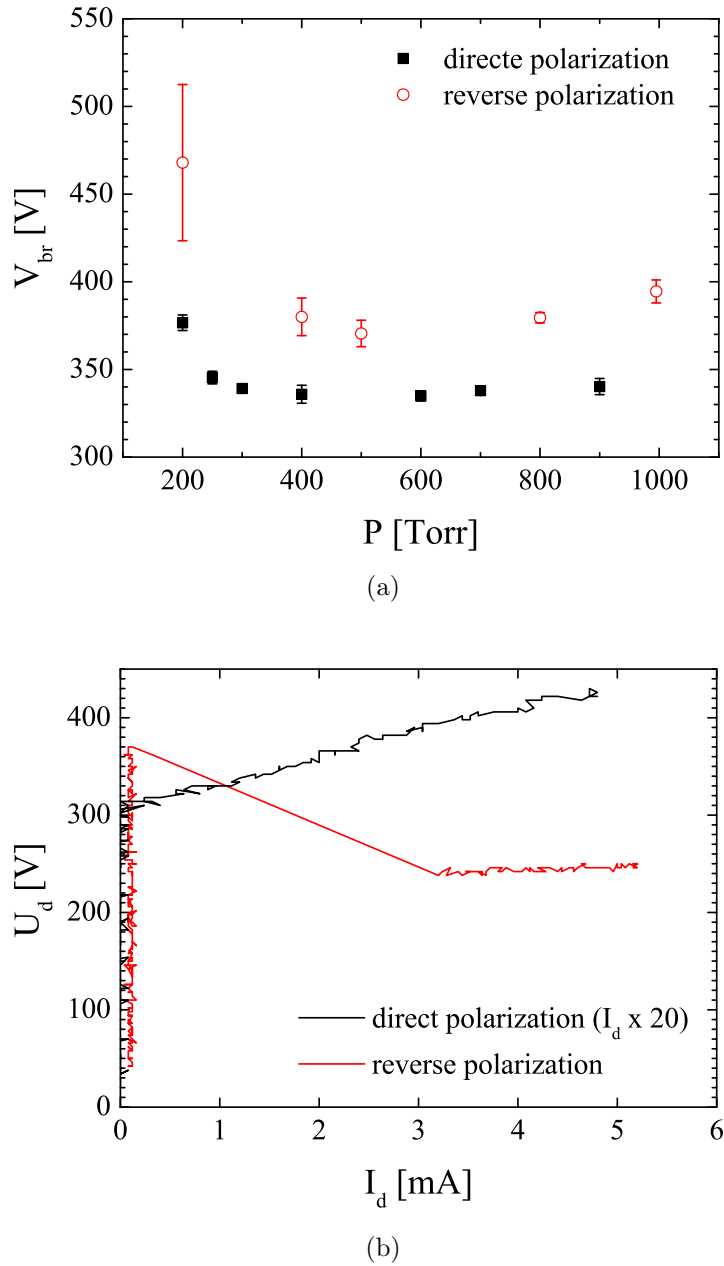


Figure 13. Electrical characteristics of a single cavity micro-reactor (anisotropic, $D = 100 \mu\text{m}$, $l = 150 \mu\text{m}$): (a) breakdown voltage versus pressure and (b) I-V curves at $P = 500$ Torr, in helium for direct and reverse electrode polarization, for $f = 200$ mHz.

20 times larger in the reverse polarity case. The dependence of secondary electron emission on cathode material and topography can be proposed as an explanation, but the difficulty to find the secondary electron emission coefficients for both materials makes the explanation speculative. The non-uniform electric field distribution in the present electrode configuration could produce by changing polarities different ionizing efficiency due to differences in charges trajectories which has already been stated in 2D electric field distributions [28].

4. Discussion

All breakdown voltage curves versus pressure, obtained by varying cavity shape, diameter, depth, microreactor configuration and polarization have the same qualitative shape. They all present two distinct parts: at small pressures, basically below 200-300 Torr, the breakdown voltage rapidly increases with decreasing pressure and at high pressure $> 200 - 300$ Torr, the breakdown voltage remains almost constant.

Paschen [6] has shown experimentally, in the case of parallel electrodes (uniform electric field), that, for a given gas and cathode material, the breakdown voltage V_{br} only depends on the product pd (p : pressure, d : electrodes gap). We must point out that the relationship $V_{br} = f(pd)$ is valid only for a given temperature and that for a more general applicability, that is to be valid in case where temperature is varying, it should be written in terms of nd , where n is the number density of gas, in order to have a temperature-independent relationship. Here we assume that, during the measurement of the breakdown voltage, the temperature is constant that is we can speak in term of pressure without ambiguity. The theoretical model he used to explain that dependence, based on electronic avalanche phenomenon, takes into account two physical processes. One is a volume process which occurs in the electrode gap (electronic impact ionization). The other is a surface process and occurs at the cathode surface (secondary electron emission). Each of these processes is characterized by a parameter, respectively the ionization coefficient (first Townsend coefficient α) and the secondary electron emission coefficient of the cathode (second Townsend coefficient γ) which both depend on the reduced electric field E/p . The second process is necessary for maintaining the discharge since otherwise the initial population of electrons (produced by the first process) would be quickly collected by anode and not replaced fast enough to sustain the discharge. The breakdown or the self-sustaining condition depends on both those parameters through the relation $\gamma[m - 1] = 1$ where $m = \exp(\int_S \alpha(s) ds) = \exp(\alpha d)$ is the electronic multiplication. Using the semi-empirical expression $\alpha/p = f(A, B, E/p)$ for the ionization coefficient, where A and B are gas dependent and determined experimentally, the breakdown voltage can be written $V_{br} = f(pd; A, B(\text{gas}); \gamma(\text{cathode material}))$. It follows that for a given electrode system with cathode material (with a specific γ) and a given gas (with specific A and B coefficient), V_{br} is only a function of the product pd .

In the case of a parallel electrode system, the distance over which the discharge occurs is well defined - assuming care has been taken to prevent long-path breakdown for low values of pd (which correspond to the left branch of the Paschen curve). This distance corresponds to the electrode separation d because electrons will drift in the electric field direction, which in this case is perpendicular to the electrodes. With such a system, it is possible to get the pd dependence of V_{br} due to the possibility to fix independently p and d .

In the microcavity case, despite a well defined electrode separation which is the thickness of the dielectric, it is difficult to define accurately the effective discharge gap d for breakdown. The distance over which the discharge occurs might change,

depending on the pressure, allowing a low breakdown voltage even if the pressure changes from the value that favors the minimum electrode spacing. Indeed, from the Paschen model, there exists a value $(pd)_{min}$ of the pd parameter, for which the breakdown voltage is minimal. It corresponds to a value of the reduced field $(E/p)_{min} = B$ which corresponds to an optimum electron energy giving a maximum ionization probability. Thus, the conditions for breakdown are the easiest at $(pd)_{min}$ because the conditions for electrons multiplication are optimal. For helium, in the parallel electrode configuration, $(pd)_{min} \sim 5 \text{ Torr}\cdot\text{cm}$.

It follows that, in the same way, there should exist in the present electrode configuration, a value $(pd)'_{min}$ providing optimal conditions for breakdown with minimal breakdown voltage. It means that for a given pressure p , the discharge should strike over a distance d such that $pd = (pd)'_{min}$. The geometry of the micro-reactor used here (height of the cavity side wall) is such that the gap width over which the discharge can ignite varies over a certain range. It means that for two different pressures p_1 and $p_2 > p_1$ the distance d over which the breakdown occurs can adapt itself to d_1 and $d_2 < d_1$ respectively in such a way that the parameter pd remains constant : $p_1d_1 = p_2d_2 = (pd)'_{min}$ permitting the lowest breakdown voltage V_{br}^{min} . This should be possible within a certain pressure range. In the present study, that range is 300-1000 Torr. Beyond, limitations should appear which would probably induce an increase of the breakdown voltage. At a certain higher pressure, the discharge gap for breakdown could not be reduced more, limited by the electrode separation. For a pressure even higher, the pd parameter could not be kept constant and would increase, inducing, according to the Paschen model, an increase of breakdown voltage. At pressure lower than about 200-300 Torr, the observed increase in breakdown voltage with decreasing pressure may be explained in terms of limitation of the breakdown distance gap. Indeed, due to some geometrical limitations, d can not further increase while decreasing pressure, leading to a decrease of the pd parameter inducing, still according to the Paschen model, an increase of breakdown voltage

5. Conclusion

Breakdown of microdischarges ignited in silicon cavities has been studied. Different micro-reactor configurations, cavity shapes, sizes and operating conditions have been investigated. The cavity shape (whether anisotropic or isotropic) as well as the cavity opening diameter have been shown not to be important parameters determining breakdown voltage. No significant influence by either of those parameters was observed in breakdown voltage or in the I-V characteristics. On the contrary, the configuration and the cavity depth have a big influence on both measurements. The delay time and electron field emission have been proposed as explanations of the differences in breakdown voltage in the three investigated configurations. Also, much lower breakdown voltages have been obtained for non-etched cavities as compared to etched cavities. As shown by finite element modeling, the geometrical electric field distribution might enhance electron

multiplication in non-etched cavities. Moreover, changing the voltage rate of rise or the pressure has been shown to have an impact on the number of microdischarges that could be ignited. This can be explained through arguments utilizing the delay time and the reduced electric field respectively. Finally, the difference in breakdown voltage and I-V characteristic observed when inverting polarization was found to be due to the different cathode materials and surface topography as well as the non-uniformity of the electric field.

Acknowledgments

This work is financially supported by the French Agence Nationale de la Recherche through the contract No. ANR-09-JCJC-0007-01 under the name SIMPAS project and supported by the RENATECH network. We would like to thank CTU-IEF team for their valuable help.

References

- [1] M.J. Kushner. Modelling of microdischarge devices: plasma and gas dynamics. *Journal of Physics D: Applied Physics*, 38:1633–1643, 2005.
- [2] K.H. Becker, U. Kogelschatz, K.H. Schoenbach, and R.J. Barker. *Non-Equilibrium Air Plasmas at Atmospheric Pressure*. Taylor and Francis, 2004.
- [3] H. Conrads and M. Schmidt. Plasma generation and plasma sources. *Plasma Sources Science and Technology*, 9:441–454, 2000.
- [4] M.A. Lieberman and A.J. Lichtenberg. *Principles of plasma discharges and materials processing*. John Wiley & Sons, 1994.
- [5] Y.P. Raizer. *Gas discharge physics*. Springer-Verlag, 1991.
- [6] F. Paschen. Ueber die zum funkenübergang in luft, wasserstoff und kohlenäure bei verschiedenen drucken erforderliche potentialdifferenz. *Annalen der Physik*, 273:69–96, 1889.
- [7] K.H. Becker, K.H. Schoenbach, and J.G. Eden. Microplasmas and applications. *Journal of Physics D: Applied Physics*, 39:R55–R70, 2006.
- [8] R. Foest, M. Schmidt, and K.H. Becker. Microplasmas, an emerging field of low-temperature plasma science and technology. *Mass Spectrometry*, 248:87–102, 2006.
- [9] F. Iza, G.J. Kim, S.M. Lee, J.K. Lee, J.L. Walsh, Y.T. Zhang, and M.G. Kong. Microplasmas: Sources, particle kinetics, and biomedical applications. *Plasma Processes and Polymers*, 5:322–344, 2008.
- [10] K.H. Schoenbach, R. Verhappen, T. Tessnow, F.E. Peterkin, and W.W. Byszewski. Microhollow cathode discharges. *Applied Physics Letters*, 68(1):13–15, 1996.
- [11] J.-P. Boeuf, L.C. Pitchford, and K.H. Schoenbach. Predicted properties of microhollow cathode discharges in xenon. *Applied Physics Letters*, 86:071501, 2005.
- [12] R.H. Stark and K.H. Schoenbach. Direct current glow discharges in atmospheric air. *Applied Physics Letters*, 74(25):3770, 1999.
- [13] Y.-B. Guo and F.C.-N. Hong. Radio-frequency microdischarge arrays for large-area cold atmospheric plasma generation. *Applied Physics Letters*, 82(3):337–339, 2003.
- [14] P. von Allmen, S.T. McCain, N.P. Ostrom, B.A. Vojak, J.G. Eden, F. Zenhausern, C. Jensen, and M. Olivier. Ceramic microdischarge arrays with individually ballasted pixels. *Applied Physics Letters*, 82(16):2562–2564, 2003.
- [15] W. Shi, R.H. Stark, and K.H. Schoenbach. Parallel operation of microhollow cathode discharges. *IEEE Transactions on Plasma Science*, 27(1):16–17, 1999.

- [16] C. Jiang and Y.-Q. Wang. Plasma display panel with micro-discharge array. *Optoelectronics Letters*, 1(3):0175–0178, 2005.
- [17] T. Dufour, R. Dussart, P. Lefauchaux, P. Ranson, L.J. Overzet, M. Mandra, J.-B. Lee, and M. Goeckner. Effect of limiting the cathode surface on direct current microhollow cathode discharge in helium. *Applied Physics Letters*, 93:071508, 2008.
- [18] J.W. Frame, D.J. Wheeler, T.A. DeTemple, and J.G. Eden. Microdischarge devices fabricated in silicon. *Applied Physics Letters*, 71(9):1165–1167, 1997.
- [19] S.-J. Park, J. Chen, C. Liu, and J.G. Eden. Silicon microdischarge devices having inverted pyramidal cathodes: Fabrication and performance of arrays. *Applied Physics Letters*, 78(4):419–421, 2001.
- [20] J. Chen, S.-J. Park, Z. Fan, J.G. Eden, and C. Liu. Development and characterization of micromachined hollow cathode plasma display devices. *Journal of Microelectromechanical Systems*, 11(5):536–543, 2002.
- [21] J.G. Eden, S.-J. Park, N.P. Ostrom, S.T. McCain, C.J. Wagner, B.A. Vojak, J. Chen, C. Liu, P. von Allmen, F. Zenhausern, D.J. Sadler, C. Jensen, D.J. Wilcox, and J.J. Ewing. Microplasma devices fabricated in silicon, ceramic, and metal/polymer structures: arrays, emitters and photodetectors. *Journal of Physics D: Applied Physics*, 36:2869–2877, 2003.
- [22] R. Dussart, L.J. Overzet, P. Lefauchaux, T. Dufour, M. Kulsreshath, M.A. Mandra, T. Tillocher, O. Aubry, S. Dozias, P. Ranson, J.B. Lee, and M. Goeckner. Integrated micro-plasmas in silicon operating in helium. *The European Physical Journal D*, 60(3):601–608, 2010.
- [23] T. Tillocher, W. Kafrouni, J. Ladroue, P. Lefauchaux, M. Boufnichel, P. Ranson, and R. Dussart. Optimization of submicron deep trench profiles with the stiger cryoetching process: reduction of defects. *Journal of Microelectromechanics and Microengineering*, 21(8):085005, 2011.
- [24] E. Kuffel, W.S. Zaengl, and J. Kuffel. *High Voltage Engineering, Fundamentals*. Butterworth-Heinemann, 2000.
- [25] L.G. Christophorou and L.A. Pinnaduwege. Basic physics of gaseous dielectrics. *IEEE Transactions on Electrical Insulation*, 25(1):55–74, 1990.
- [26] D.C. Meeker. Finite element method magnetics, version 4.0.1. <http://www.femm.info/wiki/HomePage>.
- [27] M.S. Naidu and V. Kamaraju. *High Voltage Engineering*. McGraw-Hill, 2 edition, 1996.
- [28] L.G. Guseva. *Investigation into electrical discharges in gases*, chapter Discharge striking in non-uniform fields at low pressures, pages 12–35. Klyarfel'd B.N., 1964.