



## Morbidity of diaphragmatic surgery for advanced ovarian cancer: Retrospective study of 148 cases

E. Chéreau, Roman Rouzier, S. Gouy, G. Ferron, F. Narducci, C. Bergzoll, C. Huchon, F. Lécuru, C. Pomel, E. Daraï, et al.

### ► To cite this version:

E. Chéreau, Roman Rouzier, S. Gouy, G. Ferron, F. Narducci, et al.. Morbidity of diaphragmatic surgery for advanced ovarian cancer: Retrospective study of 148 cases. *EJSO - European Journal of Surgical Oncology*, 2011, 37 (2), pp.175. 10.1016/j.ejso.2010.10.004 . hal-00663064

**HAL Id: hal-00663064**

**<https://hal.science/hal-00663064>**

Submitted on 26 Jan 2012

**HAL** is a multi-disciplinary open access archive for the deposit and dissemination of scientific research documents, whether they are published or not. The documents may come from teaching and research institutions in France or abroad, or from public or private research centers.

L'archive ouverte pluridisciplinaire **HAL**, est destinée au dépôt et à la diffusion de documents scientifiques de niveau recherche, publiés ou non, émanant des établissements d'enseignement et de recherche français ou étrangers, des laboratoires publics ou privés.

# Accepted Manuscript

Title: Morbidity of diaphragmatic surgery for advanced ovarian cancer: Retrospective study of 148 cases

Authors: E. Chéreau, MD R. Rouzier, MD, PhD S. Gouy, MD G. Ferron, MD F. Narducci, MD C. Bergzoll, MD C. Huchon, MD F. Lécure, MD, PhD C. Pomel, MD E. Daraï, MD, PhD E. Leblanc, MD D. Querleu, MD, PhD P. Morice, MD, PhD.

PII: S0748-7983(10)00546-9

DOI: [10.1016/j.ejso.2010.10.004](https://doi.org/10.1016/j.ejso.2010.10.004)

Reference: YEJSO 3061

To appear in: *European Journal of Surgical Oncology*

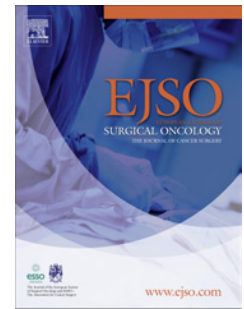
Received Date: 13 July 2010

Revised Date: 19 September 2010

Accepted Date: 26 October 2010

Please cite this article as: Chéreau E, Rouzier R, Gouy S, Ferron G, Narducci F, Bergzoll C, Huchon C, Lécure F, Pomel C, Daraï E, Leblanc E, Querleu D, Morice P. Morbidity of diaphragmatic surgery for advanced ovarian cancer: Retrospective study of 148 cases, *European Journal of Surgical Oncology* (2010), doi: 10.1016/j.ejso.2010.10.004

This is a PDF file of an unedited manuscript that has been accepted for publication. As a service to our customers we are providing this early version of the manuscript. The manuscript will undergo copyediting, typesetting, and review of the resulting proof before it is published in its final form. Please note that during the production process errors may be discovered which could affect the content, and all legal disclaimers that apply to the journal pertain.



**Morbidity of diaphragmatic surgery for advanced ovarian cancer:  
retrospective study of 148 cases**

E CHÉREAU<sup>1</sup> MD, R ROUZIER<sup>1</sup> MD, PhD, S GOUY<sup>2</sup> MD, G FERRON<sup>3</sup> MD, F NARDUCCI<sup>4</sup> MD, C BERGZOLL<sup>5</sup> MD, C HUCHON<sup>6</sup> MD, F LÉCURU<sup>6</sup> MD, PhD, C POMEL<sup>5</sup> MD, E DARAÏ<sup>1</sup> MD, PhD, E LEBLANC<sup>4</sup> MD, D QUERLEU<sup>3</sup> MD, PhD, P MORICE<sup>2</sup> MD, PhD.

1. Department of Gynecology-Obstetrics,  
Hôpital Tenon, Paris, France

2. Department of Surgical Oncology  
Institut Gustave Roussy, Villejuif, France

3. Department of Surgical Oncology  
Institut Claudius Regaud, Toulouse, France

4. Department of Surgical Oncology  
Centre Oscar Lambret, Lille, France

5. Department of Surgical Oncology  
Centre Jean Perrin, Clermont-Ferrand, France

6. Department of Gynecologic and Oncologic Surgery  
Hopital Européen Georges Pompidou, Paris, France.

**Corresponding author:**

Elisabeth Chéreau

Service de Gynécologie-Obstétrique

Hôpital Tenon, 4 rue de la Chine, 75020 Paris, France

Sec : +33 (0)1 56 01 73 18

Fax : +33 (0)1 56 01 73 17

e-mail: elisabeth.chereau@gmail.com

## Abstract

**Background:** Treatment of Advanced Ovarian Cancer (AOC) includes surgery with complete cytoreduction, one of the strongest prognostic factors. To achieve complete cytoreduction, diaphragmatic surgery is often required. There is currently a lack of information in the literature regarding the morbidity and impact of this type of surgery. The aim of this study is to report specific pulmonary morbidity and overall morbidity associated with diaphragmatic surgery in patients with AOC.

**Materials and Methods:** We conducted a multicentric (6 centres), retrospective study that included 148 patients operated on between 2004 and 2008. Patient characteristics, surgical course and postoperative complications were collected.

**Results:** The complete cytoreduction rate was 84%. The surgery was categorised by timing as initial, interval or recurrence surgery in 38%, 51% and 11% of patients, respectively. In 69% of patients, one or more postoperative complications occurred: pulmonary complication (42%), digestive fistula (7%) or lymphocyst (18%). The pulmonary complications were pleural effusion (37%), pulmonary embolism (5%), pneumothorax (4%) and pulmonary infection (2%). These complications required revision surgery, pleural evacuation, or lymphocyst evacuation in 13%, 14%, and 11% of the cases, respectively. Postoperative mortality was 3%. Risk factors for pulmonary complications were the addition of extensive upper surgery to the diaphragmatic surgery ( $p=0.014$ ) and the size of the diaphragmatic resection ( $p=0.012$ ).

**Conclusions:** Diaphragmatic surgery achieved complete removal of the tumour but resulted in pulmonary complications in addition to complications of radical surgery.

**Key words:** ovarian cancer, diaphragmatic surgery, complete surgery, morbidity, survival

## Introduction

Both retrospective and prospective reports have demonstrated that optimal cytoreduction for advanced epithelial ovarian cancer is the cornerstone of effective treatment <sup>1,2</sup>. In patients with stage IIIC/IV disease (i.e., Advanced Ovarian Cancer, AOC), diaphragm involvement is very common <sup>3</sup>. Because of late diagnosis, the overall five-year survival rate for ovarian cancer is commonly approximately 30% <sup>4</sup>. Bulky diaphragm disease had been reported as one of the most common sites of disease leading to suboptimal cytoreduction and therefore to a lower rate of survival. Surgical procedures already exist to treat diaphragm disease, which typically increase the rate of complete and optimal debulking and yield better survival compared to patients with residual disease found only in the diaphragm <sup>5</sup>. Since 1986, some authors have reported their experience with diaphragmatic surgery in advanced ovarian cancer. The related reports highlighted feasibility, improvement in outcome in cases of optimal cytoreduction and specific pulmonary morbidity <sup>6-16</sup>. Moreover, incorporation of extensive upper abdominal procedures, such as partial liver section, distal pancreatectomy or splenectomy, may lead to improved cytoreduction <sup>17-23</sup>. Extensive surgery could increase postoperative morbidity (digestive fistula, lymphocyst or infection) <sup>13, 24-34</sup>. Therefore, radical surgery for advanced ovarian cancer could improve survival but with an increase in postoperative morbidity. To date, the studies reporting diaphragmatic surgery in AOC have included less than 90 patients, were unicentric studies, and were focused on pulmonary complications only. We conducted a retrospective, multicentric study that included 148 patients who underwent diaphragmatic surgery for AOC to investigate pulmonary and general complications due to extensive surgery.

## Materials and Methods

During the period from 2004 to 2008, 148 patients underwent diaphragmatic surgery for stage IIIC or IV ovarian cancer at six French surgical oncology departments. The individual records of all patients were reviewed and analysed. Patient and tumour characteristics, intra-operative findings, postoperative courses and outcomes were analysed. Diaphragmatic surgeries may have consisted of stripping, muscle resection or electrosurgical ablation. The mean diameter of the diaphragmatic resection was also studied. The indication of chest tube placement followed the surgeon's preference and typical practice at each centre. The chest tube was typically placed at the pleural opening, especially in the case of multiple openings. Extensive upper abdominal surgery included splenectomy, cholecystectomy, distal pancreatectomy, partial liver section and lesser omentum resection. Residual disease was reported as complete (no residual disease, R0) or incomplete<sup>35</sup>. Intra-operative estimated blood loss, operative time, and length of hospitalisation were all recorded. The duration of drainage, secondary pleural puncture requirement and post-operative complications such as digestive fistula, lymphocyst and infection were also recorded.

Because this study was a retrospective study, no Institutional Review Board approval was needed.

## Statistical Analysis

Data were analysed using the chi-square test and Student's t-test. Differences were considered significant at a level of  $p < 0.05$ . Cox proportional hazards regression was used for multivariate analysis.

## Results

The median age of patients was 59 years (Table 1). Most patients were of stage FIGO 3C (91%) and had grade 2 (46%) or 3 (43%) lesions. The mean rate of CA 125 at the time of the diagnosis was 1588 UI/l. Eighty-one patients received neo-adjuvant chemotherapy. Initial surgery was performed in 38% of patients, interval surgery in 51% of cases and surgery for recurrent disease in 11% of cases. The histological type was more often serous (69%) or endometrioid (8%), and the mean size of ovarian tumours was 67 mm. During cytoreduction, 80% of patients had salpingo-oophorectomy, 76% had hysterectomy, 91% had omentectomy, 69% had pelvic lymph node dissection, 72% had para-aortic lymph node dissection, and 55% underwent appendectomy. Intestinal resection was performed in 68% of cases. Extensive upper abdominal surgery included lesser omentum resection (35%), splenectomy (31%), cholecystectomy (18%), distal pancreatectomy (4%), partial liver section (9%) and partial gastrectomy (3%). All patients underwent diaphragmatic surgery. On the right hemi-diaphragm, coagulation was performed in 25% of cases, stripping (resection of the diaphragm peritoneum) was performed in 91% of cases, and muscle resection was performed in 62% of cases, with 51% of pleural openings (procedures may have been combined). Fewer patients underwent left hemi-diaphragm surgery (42%): coagulation was performed in 32% of cases, stripping in 74% of cases and muscle resection in 15% of cases (including 8% with pleural opening). The mean size of diaphragmatic resection was 126 mm for the right side and 74 mm for the left side. Pleural drainage was established during the surgical course for 35% of patients, and the mean duration of drainage was 5.1 days. The mean operative time was 426 minutes, and the estimated blood loss was 1465 ml. One hundred and twenty-four (84%) patients underwent complete cytoreduction (R0), and 24 underwent incomplete resection (16%).

Details about the extent of surgery according to the timing of surgery (i.e., initial, interval or recurrence) are reported in Supplementary file 1.

Postoperative complications occurred in 102 patients (Table 2), and pulmonary complications were diagnosed in 63 patients. The complications included pleural effusions in 37% of patients, pulmonary embolisms in 5%, pneumothorax in 4% and pulmonary infections in 2%. Sixty-two patients had non-pulmonary complications, including digestive fistulas (7%), lymphocysts (18%) and fever or infections (55%). Revision surgery was necessary for 13% of patients, secondary drainages or pleural punctures for 14% of patients and lymphocyst punctures for 11% of patients. Rehospitalisation was required for 20% of patients. Four patients died within 30 days of operation (3%), all from septic complications.

When we calculated the rate of postoperative complications (total, pulmonary or non-pulmonary) according to the number of patients managed during the study period ( $>$  or  $<$  20 patients), there was no significant difference between the groups (Supplementary file 2).

We next compared surgical characteristics and postoperative complications between initial surgery and interval surgery. We found significant differences in the mean duration of surgery (467 min for initial surgery vs. 409 for interval surgery,  $p=0.019$ ) and for the occurrence of intestinal resection ( $p=0.011$ ), lymphadenectomy ( $p=0.04$ ) and partial liver section ( $p=0.004$ ). Despite these results, we did not find any significant differences in the occurrence of postoperative complications or the results of the surgery.

Risk factors for pulmonary complications were the addition of extensive upper surgery to the diaphragmatic surgery ( $p=0.014$ ) and the size of the diaphragmatic resection ( $p=0.012$ ). For severe complications (resulting in death or high morbidity), we identified past history of surgery ( $p=0.012$ ) and intestinal resection ( $p=0.013$ ) as risk factors. Time of surgery (initial or interval surgery) was not a risk factor for the occurrence of postoperative complications, regardless of type (pulmonary, non-pulmonary or severe complications).



The median follow-up time for the group was 19.1 months. The two-year disease-free survival was 37%. The five-year overall survival and disease-free survival estimations were 45% and 10%, respectively. There were no differences for disease free survival (DFS) or overall survival (OS) between initial and interval surgeries.

## Discussion

For AOC, residual disease after surgery is the most relevant determining factor for survival<sup>1,2</sup>. Because more than 75% of patients with advanced ovarian cancer had diaphragmatic disease on at least one side, diaphragmatic surgery is a major step in cytoreductive surgery<sup>3</sup>. However, radical surgery has its own morbidity, including both pulmonary and non-pulmonary (digestive fistula, lymphocyst, fever or infection) complications. In this study of 148 patients with diaphragmatic surgery as part of the radical cytoreductive surgery for stage-3C and stage-4 ovarian cancer, postoperative complications occurred in 69% of cases: 43% of patients had pulmonary complications, and 42% of patients had non-pulmonary complications.

### Extension of radical surgery

Diaphragmatic carcinomatosis is one of the most frequent localisations in AOC. We reported patient and tumour characteristics in accordance with literature findings: the median age was 59 years, and the tumours were most often serous (49%) and grade 2 (46%) or 3 (43%). The rate of complete cytoreduction was 84%. To obtain this high rate of complete cytoreduction, extensive surgery including upper abdominal surgery and digestive resection was often performed. Moreover, this rate can be explained by the high rate of interval surgery. In the literature, during extensive surgery with the aim of optimal resection, authors reported rates of diaphragmatic surgery ranging from 10 to 100%, intestinal resection from 20 to 100%, splenectomy from 1 to 33%, distal pancreatectomy from 0 to 11%, partial liver section from 0 to 16% and cholecystectomy from 2 to 20%<sup>2,5,10,13,22,25,36</sup>. In this study, in addition to systematic diaphragmatic surgery, we performed similar rates of intestinal resection (68%), splenectomy (31%), cholecystectomy (18%), partial liver section (9%) and distal

pancreatectomy (4%). These results suggest that diaphragmatic surgery is only one component of radical surgery. Therefore, postoperative morbidity included, in addition to pulmonary complications, other specific complications such as digestive fistula and lymphocysts.

### **Pulmonary complications**

During diaphragmatic surgery, the pleural space was opened in 51% of cases. Rates found in others studies ranged from 7 to 52% (Table 3) <sup>6-16</sup>. Pulmonary complications occurred in 43% of cases, with the main complication being pleural effusion (37%). Other complications were pneumothorax (4%), pulmonary infections (2%) and pulmonary embolism (5%). Several studies have reported rates of pulmonary complications after diaphragmatic surgery for ovarian cancer (Table 3). In these studies, the rates of diaphragmatic surgery ranged from 14 to 100%, and complete surgery was achieved in 43 to 93% of cases. Pneumothorax was found in 0 to 33% of cases. Pleural effusion occurred in 0 to 59% of cases, depending on the rate of chest drainage established during surgery (from 0 to 65%). In a previous study, we concluded on the relevance of chest drainage in cases of pleural opening <sup>13</sup>. Eisenhauer et al. <sup>10</sup> had previously claimed that systematic placement of chest tubes was not justified because, in their view, the occurrence of postoperative pleural effusion was not a major postoperative complication. However, in their study, only 40% of patients had lymphadenectomies, and 60% had only diaphragmatic surgery. In our experience, the need for secondary drainage or pleural puncture extended the length of hospitalisation and post-operative pain; therefore, placement of a chest tube in cases of pleural opening might be relevant <sup>13</sup>. Rates of secondary pleural puncture or chest tube placement in the literature ranged from 0 to 44%; this variability may be related to the number of chest drains inserted during surgery. The rates of secondary pleural puncture or chest tube placement in our study

were 14%, in agreement with these data. The rate of pleural effusion reported in our study could be explained by the importance of achieving 62% muscle resection and a median size of right hemi-diaphragm resection of 126 mm in diaphragmatic surgery. This rate emphasised the relevance of chest drainage in decreasing postoperative interventions.

Risk factors for the occurrence of pulmonary complications were the addition of other upper abdominal procedures and the size of the diaphragmatic resection<sup>15</sup>. Other studies found liver mobilisation<sup>10</sup> or pleural opening<sup>11</sup> to be risk factors. Because we routinely divide the hepatic ligaments to mobilise the liver, we were unable to test this association in our cohort.

### **Non-pulmonary complications**

The rates of non-pulmonary complications found in our study were similar to those reported in the literature<sup>13,21-34</sup>: digestive fistula from 1.4 to 8.2%, lymphocyst from 0.6 to 32%, and septic complications from 3.7 to 41.4%. The revision surgery rate in our study was in accordance with data in the literature that report rates from 4.1 to 16.5%. Four patients died during the 30 postoperative days, all from septic complications. Rates in the literature ranged from 0.3 to 5.7%. In a recent meta-analysis, Gerestein et al.<sup>30,37</sup> found that the more frequent causes of postoperative mortality were adverse surgical events, pulmonary complications and cardiovascular complications.

The important rate of iterative surgery found among our population was in accordance with the rates reported in the literature for extensive surgery (from 4.1% to 16%)<sup>13,24-26,28,31</sup>.

### **Expert centres**

Another major consideration when debating morbidity for AOC is the management of patients in expert centres. Indeed, publications increasingly highlight the importance of not only

surgical skills and experience but also of high-quality surgical care delivered by a multidisciplinary team that includes oncology nurses, anaesthesiologists, pathologists, dieticians and physiotherapists for the management of advanced ovarian cancer patients <sup>19</sup>. Many retrospective studies have reported that debulking operations performed by gynaecologic oncologists result in the best outcomes (including survival) compared to surgery performed by general gynaecologists or general surgeons <sup>20-22</sup>. Therefore, centralisation of these patients in expert centres is recommended.

In this study, no differences were found between the centres with under or over 20 patients. This outcome was expected because all surgeons were gynaecologic oncologists and all these centres were used to perform radical surgery not only for ovarian cancer but also for advanced cervical, endometrial or vulvar cancer.

## **Conclusion**

One of the strengths of this study is the report of not only specific postoperative complications of diaphragmatic surgery but also other complications of extensive surgery for AOC.

In conclusion, diaphragmatic surgery is an essential step in cytoreductive surgery for AOC and improves survival. When this surgery is used, it causes pulmonary complications in addition to morbidity due to the need for radical surgery.

## References

1. Bristow RE, Tomacruz RS, Armstrong DK, Trimble EL, Montz FJ. Survival effect of maximal cytoreductive surgery for advanced ovarian carcinoma during the platinum era: a meta-analysis. *Journal of Clinical Oncology*, Vol 20, 2002: 1248-1259
2. Chi DS, Eisenhauer EL, Lang J, Huh J, Haddad L, Abu-Rustum NR, Sonoda Y, Levine DA, Hensley M, Barakat RR. What is the optimal goal of primary cytoreductive surgery for bulky stage IIIC epithelial ovarian carcinoma (EOC)? *Gynecol Oncol*. 2006 Nov;103(2):559-64.
3. Hacker NF, Berek JS, Lagasse LD, Nieberg RK, Elashoff RM. Primary cytoreductive surgery for epithelial ovarian cancer. *Obstet Gynecol*. 1983 Apr;61(4):413-20
4. Eisenkop SM, Spirtos NM, Lin WC. "Optimal" cytoreduction for advanced epithelial ovarian cancer: a commentary. *Gynecol Oncol*. 2006 Oct;103(1):329-35.
5. Chi DS, Franklin CC, Levine DA, Akselrod F, Sabbatini P, Jarnagin WR, et al. Improved optimal cytoreduction rates for stages IIIC and IV epithelial ovarian, fallopian tube, and primary peritoneal cancer: a change in surgical approach. *Gynecol Oncol* 2004;94:650-4.
6. Deppe G, Malviya VK, Boike G, Hampton A. Surgical approach to diaphragmatic metastases from ovarian cancer. *Gynecol Oncol*. 1986 Jun;24(2):258-60.
7. Montz FJ, Schlaerth JB, Berek JS. Resection of diaphragmatic peritoneum and muscle: role in cytoreductive surgery for ovarian cancer. *Gynecol Oncol*. 1989 Dec;35(3):338-40.
8. Kapnick SJ, Griffiths CT, Finkler NJ. Occult pleural involvement in stage III ovarian carcinoma: role of diaphragm resection. *Gynecol Oncol*. 1990 Nov;39(2):135-8.

9. Cliby W, Dowdy S, Feitoza SS, Gostout BS, Podratz KC. Diaphragm resection for ovarian cancer: technique and short-term complications. *Gynecol Oncol.* 2004 Sep;94(3):655-60.
10. Eisenhauer EL, D'Angelica MI, Abu-Rustum NR, Sonoda Y, Jarnagin WR, Barakat RR, Chi DS. Incidence and management of pleural effusions after diaphragm peritonectomy or resection for advanced mullerian cancer. *Gynecol Oncol.* 2006 Dec;103(3):871-7.
11. Dowdy SC, Loewen RT, Aletti G, Feitoza SS, Cliby W. Assessment of outcomes and morbidity following diaphragmatic peritonectomy for women with ovarian carcinoma. *Gynecol Oncol.* 2008 May;109(2):303-7.
12. Devolder K, Amant F, Neven P, van Gorp T, Leunen K, Vergote I. Role of diaphragmatic surgery in 69 patients with ovarian carcinoma. *Int J Gynecol Cancer.* 2008 Mar-Apr;18(2):363-8.
13. Chéreau E, Ballester M, Selle F, Cortez A, Pomel C, Darai E, Rouzier R. Pulmonary morbidity of diaphragmatic surgery for stage III/IV ovarian cancer. *BJOG.* 2009 Jul;116(8):1062-8.
14. Fanfani F, Fagotti A, Gallotta V, Ercoli A, Pacelli F, Costantini B, Vizzielli G, Margariti PA, Garganese G, Scambia G. Upper abdominal surgery in advanced and recurrent ovarian cancer: role of diaphragmatic surgery. *Gynecol Oncol.* 2010 Mar;116(3):497-501.
15. Tsolakidis D, Amant F, Van Gorp T, Leunen K, Neven P, Vergote I. Diaphragmatic surgery during primary debulking in 89 patients with stage IIIB-IV epithelial ovarian cancer. *Gynecol Oncol.* 2010 Mar;116(3):489-96.
16. Gouy S, Chereau E, Custodio AS, Uzan C, Pautier P, Haie-Meder C, Duvillard P, Morice P. Surgical procedures and morbidities of diaphragmatic surgery in patients

undergoing initial or interval debulking surgery for advanced-stage ovarian cancer. *J Am Coll Surg*. 2010 Apr;210(4):509-14.

17. Eisenhauer EL, Abu-Rustum NR, Sonoda Y, Levine DA, Poynor EA, Aghajanian C, Jarnagin WR, DeMatteo RP, D'Angelica MI, Barakat RR, Chi DS. The addition of extensive upper abdominal surgery to achieve optimal cytoreduction improves survival in patients with stages IIIC-IV epithelial ovarian cancer. *Gynecol Oncol*. 2006 Dec;103(3):1083-90.
18. Zivanovic O, Eisenhauer EL, Zhou Q, Iasonos A, Sabbatini P, Sonoda Y, Abu-Rustum NR, Barakat RR, Chi DS. The impact of bulky upper abdominal disease cephalad to the greater omentum on surgical outcome for stage IIIC epithelial ovarian, fallopian tube, and primary peritoneal cancer. *Gynecol Oncol*. 2008 Feb;108(2):287-92.
19. Aletti GD, Dowdy SC, Podratz KC, Cliby WA. Surgical treatment of diaphragm disease correlates with improved survival in optimally debulked advanced stage ovarian cancer. *Gynecol Oncol*. 2006 Feb;100(2):283-7.
20. Kehoe SM, Eisenhauer EL, Chi DS. Upper abdominal surgical procedures: liver mobilization and diaphragm peritonectomy/resection, splenectomy, and distal pancreatectomy. *Gynecol Oncol*. 2008 Nov;111(2 Suppl):S51-5.
21. Colombo PE, Mourregot A, Fabbro M, Gutowski M, Saint-Aubert B, Quenet F, Gourgou S, Rouanet P. Aggressive surgical strategies in advanced ovarian cancer: a monocentric study of 203 stage IIIC and IV patients. *Eur J Surg Oncol*. 2009 Feb;35(2):135-43.
22. Chi DS, Eisenhauer E, Zivanovic O, Sonoda Y, Abu-Rustum N, Levine DA, Guile MW, Bristow RE, Aghajanian C, Barakat RR. Improved progression-free and overall survival in advanced ovarian cancer as a result of a change in surgical paradigm. *Gynecol Oncol* 2009 :114,26–31.



23. Chi DS, Franklin CC, Levine DA, Akselrod F, Sabbatini P, Jarnagin WR, DeMatteo R, Poynor EA, Abu-Rustum NR, Barakat RR. Improved optimal cytoreduction rates for stages IIIC and IV epithelial ovarian, fallopian tube, and primary peritoneal cancer: a change in surgical approach. *Gynecol Oncol* 2004 ;94:650–654.
24. Estes JM, Leath CA 3rd, Straughn JM Jr, Rocconi RP, Kirby TO, Huh WK, Barnes MN 3rd. Bowel resection at the time of primary debulking for epithelial ovarian carcinoma: outcomes in patients treated with platinum and taxane-based chemotherapy. *J Am Coll Surg*. 2006 Oct;203(4):527-32.
25. Mourton SM, Temple LK, Abu-Rustum NR, Gemignani ML, Sonoda Y, Bochner BH, Barakat RR, Chi DS. Morbidity of rectosigmoid resection and primary anastomosis in patients undergoing primary cytoreductive surgery for advanced epithelial ovarian cancer. *Gynecol Oncol*. 2005 Dec;99(3):608-14.
26. Tamussino KF, Lim PC, Webb MJ, Lee RA, Lesnick TG. Gastrointestinal surgery in patients with ovarian cancer. *Gynecol Oncol*. 2001 Jan;80(1):79-84.
27. Houvenaeghel G, Gutowski M, Buttarelli M, Cuisenier J, Narducci F, Dalle C, Ferron G, Morice P, Meeus P, Stockle E, Bannier M, Lambaudie E, Rouanet P, Fraisse J, Leblanc E, Dauplat J, Querleu D, Martel P, Castaigne D. Modified posterior pelvic exenteration for ovarian cancer. *Int J Gynecol Cancer*. 2009 Jul;19(5):968-73.
28. Gillette-Cloven N, Burger RA, Monk BJ, McMeekin DS, Vasilev S, DiSaia PJ, Kohler MF. Bowel resection at the time of primary cytoreduction for epithelial ovarian cancer. *J Am Coll Surg*. 2001 Dec;193(6):626-32.
29. Richardson DL, Mariani A, Cliby WA. Risk factors for anastomotic leak after rectosigmoid resection for ovarian cancer. *Gynecol Oncol*. 2006 Nov;103(2):667-72.
30. Gerestein CG, Damhuis RA, de Vries M, Reedijk A, Burger CW, Kooi GS. Causes of postoperative mortality after surgery for ovarian cancer. *Eur J Cancer*. 2009 Jul 15.

31. Obermair A, Hagenauer S, Tamandl D, Clayton RD, Nicklin JL, Perrin LC, Ward BG, Crandon AJ. Safety and efficacy of low anterior en bloc resection as part of cytoreductive surgery for patients with ovarian cancer. *Gynecol Oncol*. 2001 Oct;83(1):115-20.
32. Petru E, Tamussino K, Lahousen M, Winter R, Pickel H, Haas J. Pelvic and paraaortic lymphocysts after radical surgery because of cervical and ovarian cancer. *Am J Obstet Gynecol*. 1989 Oct;161(4):937-41.
33. Benedetti-Panici P, Maneschi F, Cutillo G, D'Andrea G, di Palumbo VS, Conte M, Scambia G, Mancuso S. A randomized study comparing retroperitoneal drainage with no drainage after lymphadenectomy in gynecologic malignancies. *Gynecol Oncol*. 1997 Jun;65(3):478-82.
34. Morice P, Lassau N, Pautier P, Haie-Meder C, Lhomme C, Castaigne D. Retroperitoneal drainage after complete Para-aortic lymphadenectomy for gynecologic cancer: a randomized trial. *Obstet Gynecol*. 2001 Feb;97(2):243-7.
35. du Bois A, Reuss A, Pujade-Lauraine E, Harter P, Ray-Coquard I, Pfisterer J. Role of surgical outcome as prognostic factor in advanced epithelial ovarian cancer: a combined exploratory analysis of 3 prospectively randomized phase 3 multicenter trials: by the Arbeitsgemeinschaft Gynaekologische Onkologie Studiengruppe Ovarialkarzinom (AGO-OVAR) and the Groupe d'Investigateurs Nationaux Pour les Etudes des Cancers de l'Ovaire (GINECO). *Cancer*. 2009 Mar 15;115(6):1234-44.
36. Eisenkop SM, Friedman RL, Wang HJ. Complete cytoreductive surgery is feasible and maximizes survival in patients with advanced epithelial ovarian cancer: a prospective study. *Gynecol Oncol*. 1998 May;69(2):103-8.

37. Gerestein CG, Damhuis RA, Burger CW, Kooi GS. Postoperative mortality after primary cytoreductive surgery for advanced stage epithelial ovarian cancer: a systematic review. *Gynecol Oncol*. 2009 Sep;114(3):523-7.
38. Verleye L, Ottevanger PB, Vergote I. Surgical program building in advanced ovarian cancer: European perspective. *Gynecol Oncol* 2009;114: S10-4.
39. Giede KC, Kieser K, Dodge J, Rosen B. Who should operate on patients with ovarian cancer? An evidence-based review. *Gynecol Oncol* 2005;99: 447-61.
40. Vernooij F, Heintz P, Witteveen E, van der Graaf Y. The outcomes of ovarian cancer treatment are better when provided by gynecologic oncologists and in specialized hospitals: a systematic review. *Gynecol Oncol* 2007;105: 801-12.
41. Munstedt K, von Georgi R, Misselwitz B, Zygmunt M, Stillger R, Kunzel W. Centralizing surgery for gynecologic oncology--a strategy assuring better quality treatment? *Gynecol Oncol* 2003;89: 4-8.

**Table 1. Patients, tumor characteristics and surgical procedures performed.**

	n (%)
<b>Median age (range)</b>	59 (18 – 84)
<b>BMI (range)</b>	23.1 (16.4 – 52)
<b>FIGO stage</b>	
III C	135 (91%)
IV	13 (9%)
<b>Tumor grade (n=76)</b>	
1	8 (11%)
2	35 (46%)
3	33 (43%)
<b>Histologic type</b>	
Serous	102 (69%)
Endometrioid	13 (8%)
Mucinous	4 (3%)
Other	29 (20%)
<b>Type of surgery</b>	
Initial	57 (38%)
Interval	75 (51%)
Recurrence	16 (11%)
<b>Pre-operative CA 125 level (range)</b>	1588 (10 – 12500)
<b>Neo-adjuvant chemotherapy</b>	81 (55%)
<b>Standard Surgery</b>	
Hysterectomy	112 (76%)
Unilateral or bilateral salpingo-oophorectomy	119 (80%)
Omentectomy	134 (91%)
Intestinal resection	100 (68%)
Appendectomy	81 (55%)
Pelvic lymphadenectomy	102 (69%)
Para-aortic lymphadenectomy	107 (72%)
<b>Extensive upper abdominal surgery</b>	
Splenectomy	46 (31%)
Cholecystectomy	26 (18%)
Distal pancreatectomy	6 (4%)

Partial liver section	13 (9%)
Partial gastrectomy	4 (3%)
Lesser omentum resection	52 (35%)
<b>Diaphragmatic surgery</b>	
<b>Right</b>	<b>148 (100%)</b>
Coagulation	37 (25%)
Stripping	134 (91%)
Muscle resection	91 (62%)
Pleural opening	75 (51%)
Mean diameter size of diaphragmatic resection (mm)	126 (8 – 400)
<b>Left</b>	<b>62 (42%)</b>
Coagulation	20 (32%)
Stripping	45 (74%)
Muscle resection	9 (15%)
Pleural opening	5 (8%)
Mean diameter size of diaphragmatic resection (mm)	74 (10 – 250)
Pleural drainage	52 (35%)
Mean operative time (min) (range)	426 (150 – 720)
Estimated blood loss (ml) (range)	1465 (200 – 7000)
<b>Resection</b>	
Complete R0	124 (84%)
Incomplete	24 (16%)

**Table 2. Surgical Outcome**

	n (%)
Patients with one or more post-operative complications	102 (69%)
Patients with non-pulmonary complications	62 (42%)
Fever / infection	81 (55%)
Lymphocyst	26 (18%)
Digestive fistula	10 (7%)
Urinary fistula	1 (1%)
Patients with pulmonary complications	63 (43%)
Pleural effusion	55 (37%)
Pulmonary embolism	7 (5%)
Pneumothorax	6 (4%)
Pulmonary infection	3 (2%)
Secondary drainage or pleural puncture	21 (14%)
Length of hospitalization (days) (range)	14.8 (1 – 60)
Re-hospitalization	30 (20%)
Iterative surgery	19 (13%)
Post-operative mortality	4 (3%)

**Table 3: Review of studies on diaphragmatic surgery for ovarian cancer. (RD: Residual disease)**

	Year	Number of patients	Diaphragmatic surgery	Time of surgery	Complete surgery	Pleural opening	Chest drain	Pleural effusion	Pneumothorax	Pleural punctures or chest tube
<b>Deppe (6)</b>	1986	14	100%	Initial	100% RD < 2 cm	-	-	0 %	0 %	0 %
<b>Montz (7)</b>	1989	14	100%	Initial	93%	28 %	28 %	0 %	7 %	0 %
<b>Kapnick (8)</b>	1990	21	100%	Initial (76%) Recurrence (24%)	100% RD <1 cm	52 %	52 %	0 %	33 %	0 %
<b>Cliby (9)</b>	2004	41	100%	Recurrence (85%)	80%	24 %	24 %	9,8%	5%	15%
<b>Eisenhauer (10)</b>	2006	59 / 215	27%	Initial	-	27 %	12%	58 %	2 %	15 %
<b>Dowdy (11)</b>	2008	56 / 382	14%	Initial (66%) Interval (34%)	95% RD < 1 cm	-	-	30 %	0 %	12.5%
<b>Devolder (12)</b>	2008	69 / 137	50%	Initial (55%) Interval (42%) Recurrence (3%)	85 %	7 %	0 %	59 %	6 %	17 %
<b>Chéreau (13)</b>	2009	18 / 37	48%	Initial	89 %	38 %	0 %	38 %	5 %	44 %
<b>Fanfani (14)</b>	2010	87/234	37%	Initial (58%) Interval (18%) Recurrence (24%)	100% RD < 1 cm	13.8%	65%	43%	5%	11%
<b>Tsolakidis (15)</b>	2010	89	100%	Initial	90%	-	-	63%	10%	16%
<b>Gouy (16)</b>	2010	63	100%	Initial (35%) Interval (65%)	95%	47%	14%	2%	3%	5%
<b>Current Study</b>	2010	148	100%	Initial (38%) Interval (51%) Recurrence (11%)	84%	51%	35%	37%	4%	14%

**Figure 1 : Progression-free and Overall Survival**

Figure 1a : Progression-free Survival

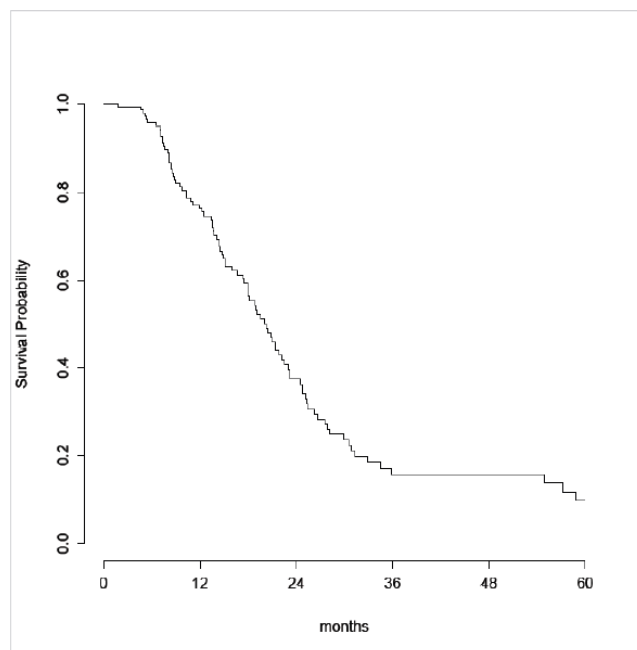


Figure 1b : Overall Survival

