



HAL
open science

XPS study of adsorption and desorption of a Bi thin film on the fivefold icosahedral Al-Pd-Mn surface

Kirsty Moray Young, Joseph A. Smerdon, Vinod R. Dhanak, Hem Raj Sharma, Ronan Mcgrath, Thomas Lograsso, Amy Ross, Nicholas Cross

► To cite this version:

Kirsty Moray Young, Joseph A. Smerdon, Vinod R. Dhanak, Hem Raj Sharma, Ronan Mcgrath, et al.. XPS study of adsorption and desorption of a Bi thin film on the fivefold icosahedral Al-Pd-Mn surface. Philosophical Magazine, 2011, pp.1. 10.1080/14786435.2010.536793 . hal-00660030

HAL Id: hal-00660030

<https://hal.science/hal-00660030>

Submitted on 15 Jan 2012

HAL is a multi-disciplinary open access archive for the deposit and dissemination of scientific research documents, whether they are published or not. The documents may come from teaching and research institutions in France or abroad, or from public or private research centers.

L'archive ouverte pluridisciplinaire **HAL**, est destinée au dépôt et à la diffusion de documents scientifiques de niveau recherche, publiés ou non, émanant des établissements d'enseignement et de recherche français ou étrangers, des laboratoires publics ou privés.



XPS study of adsorption and desorption of a Bi thin film on the fivefold icosahedral Al-Pd-Mn surface

Journal:	<i>Philosophical Magazine & Philosophical Magazine Letters</i>
Manuscript ID:	TPHM-10-May-0217.R2
Journal Selection:	Philosophical Magazine
Date Submitted by the Author:	07-Oct-2010
Complete List of Authors:	Young, Kirsty; University of Liverpool, Department of Physics and Surface Science Research Centre Smerdon, Joseph; Argonne National Laboratory, Centre for Nanoscale Materials Dhanak, Vinod; University of Liverpool, Department of Physics Sharma, Hem Raj; University of Liverpool, Department of Physics McGrath, Ronan; University of Liverpool, Department of Physics Lograsso, Thomas; Iowa State University, Ames Laboratory Ross, Amy; Los Alamos Natl. Lab, MST metallography team Cross, Nicholas; Teachers College
Keywords:	scanning probe microscopy, adsorption, quasicrystals, X-ray spectroscopy, surface analysis, thin films
Keywords (user supplied):	Al-Pd-Mn

SCHOLARONE™
Manuscripts

1
2
3
4
5
6
7
8
9
10
11
12
13
14
15
16
17
18
19
20
21
22
23
24
25
26
27
28
29
30
31
32
33
34
35
36
37
38
39
40
41
42
43
44
45
46
47
48
49
50
51
52
53
54
55
56
57
58
59
60

XPS study of adsorption and desorption of a Bi thin film on the fivefold icosahedral Al-Pd-Mn surface

K. M. Young¹, N. Cross¹, J. A. Smerdon^{1*}, V. R. Dhanak¹, H. R. Sharma¹, T. A. Lograsso², A. R. Ross², R. McGrath¹

¹*Surface Science Research Centre and Department of Physics, The University of Liverpool, Liverpool L69 3BX, UK*

²*Ames Laboratory, Iowa State University, Ames, Iowa 50011 USA*

We have employed x-ray photoelectron spectroscopy to characterise the growth and thermal stability of a Bi thin film on the fivefold icosahedral Al-Pd-Mn surface. The growth can be characterised as Stranski-Krastanov, in agreement with previous STM studies. As a function of annealing temperature, the multilayer desorbs first and thereafter coverages of 1 ML and 0.5 ML are stable for significant temperature ranges.

Keywords: bismuth; aluminium-palladium-manganese; x-ray photoelectron spectroscopy; scanning tunnelling microscopy; quasicrystal; surface; adsorption

1. Introduction

There have been numerous studies in recent years of the growth of thin films on quasicrystal surfaces [1–4]. The surfaces of quasicrystals offer a unique template for epitaxial growth, and several pseudomorphic systems have been discovered [5–7]. The study of such systems can provide insight on the influence of quasiperiodic order on their physical properties and on their potential for technological application.

The semi-metal bismuth (Bi) adsorbed on the fivefold surface of *i*-Al-Pd-Mn was one of the first systems found experimentally to form a quasiperiodic pseudomorphic monolayer [5]. A scanning tunnelling microscopy (STM) study of the initial growth showed that the atoms first adsorb in a pentagonal arrangement at sites above truncated pseudo-Mackay clusters [8]. After approximately 0.5 ML coverage (one monolayer (ML) corresponds to an adsorbate layer which completely covers the surface), the nucleation sites become exhausted and further Bi adatoms occupy sites interstitial to the clusters to form a complete monolayer. Further deposition above a monolayer leads to the formation of {100}-pseudo-cubic Bi islands [9]. The most stable islands form with heights of 4 and 8 ML.

In our recent study [10] atomic resolution STM images confirmed the structure of these pseudo-cubic, nano-scale islands. It was found that with time the pseudo-cubic islands transformed to larger, hexagonal islands, orientated with the {111}-pseudo-cubic ({0001}-hexagonal) plane parallel to the surface. This orientation is the preferred epitaxial allotrope observed for deposited Bi [11]. By increasing the flux of Bi it was possible to increase the density of pseudo-cubic islands and prevent the transformation to the hexagonal phase. These surfaces were in turn utilised to compare their reactivity to molecular adsorbates [10, 12].

In this article, we describe the results of an X-ray photoelectron spectroscopy (XPS) study of the growth of Bi on the fivefold surface of *i*-Al-Pd-Mn, and of the stability of the overlayer as a function of substrate temperature. We establish the desorption temperature ranges for the multi-layer and monolayer regimes.

*Current address: Center for Nanoscale Materials, Argonne National Laboratory, 9700 S Cass Avenue Argonne, IL 60439

1
2
3
4
5
6
7
8
9
10
11
12
13
14
15
16
17
18
19
20
21
22
23
24
25
26
27
28
29
30
31
32
33
34
35
36
37
38
39
40
41
42
43
44
45
46
47
48
49
50
51
52
53
54
55
56
57
58
59
60

2. Experimental Details

The sample surface was oriented perpendicular to the fivefold axis. The nominal composition of the sample was $\text{Al}_{70.5}\text{Pd}_{19.5}\text{Mn}_{8.5}$. After insertion into a UHV chamber it was cleaned by sputtering with Ar^+ ions at grazing incidence. Surface order was subsequently restored by annealing for 2 hours at a temperature of 923 ± 10 K. It has been shown that the resulting surface can be considered as a bulk termination [13].

The x-ray source employed an Al anode target (x-ray energy line $\text{Al K}\alpha = 1486$ eV). A hemispherical analyser was used for photoelectron detection. XPS scans were recorded at 15° off normal emission. The angular acceptance of the analyser is $\pm 8^\circ$. The surface was checked for contamination by an XPS scan after every anneal. The base pressure in the chamber was 5×10^{-10} mbar. STM data were taken using an Omicron STM-1 equipped with a chemically etched tungsten (W) tip.

The amount of Bi deposited on the surface was calibrated using XPS intensity measurements of the Mn $2p$, Pd $3d$, Al $2s$, Al $2p$ and Bi $4f$ core-level photoemission peaks as the dose was increased. The estimated coverage was therefore a dose equivalent to the monolayer (quoted as monolayer equivalent - MLE). A Shirley background was fitted to the peaks and the the peaks were then fitted with a Gaussian-Lorentzian sum, from which the total area was deduced to represent the peak intensity. The order of the clean surface was confirmed by observation of a distinct, fivefold low energy electron diffraction (LEED) pattern. The stability of the film structures was determined by incremental desorption of the film. This was performed by directly heating the sample with a multilayer present and monitoring changes in the photoemission peak intensities. The sample temperature was measured using a previously calibrated optical pyrometer.

3. Results and discussion

STM scans obtained from the clean surface show a flat step and terrace substrate morphology. A quasiperiodic Bi layer wets this surface. Further deposition on this wetting layer, leads to two different allotropes (Figure 1) depending on the growth conditions. Initially, $\{100\}$ -pseudo-cubic islands are observed, as shown in Figure 1 a). This structure was formed using a Bi flux of $0.16 \text{ MLE min}^{-1}$. The stepped, pseudo-cubic $\{100\}$ islands are composed of 4, 8 or a larger number of multilayers.

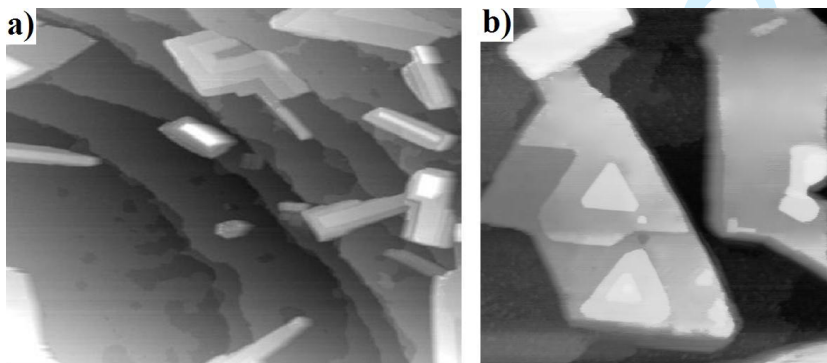


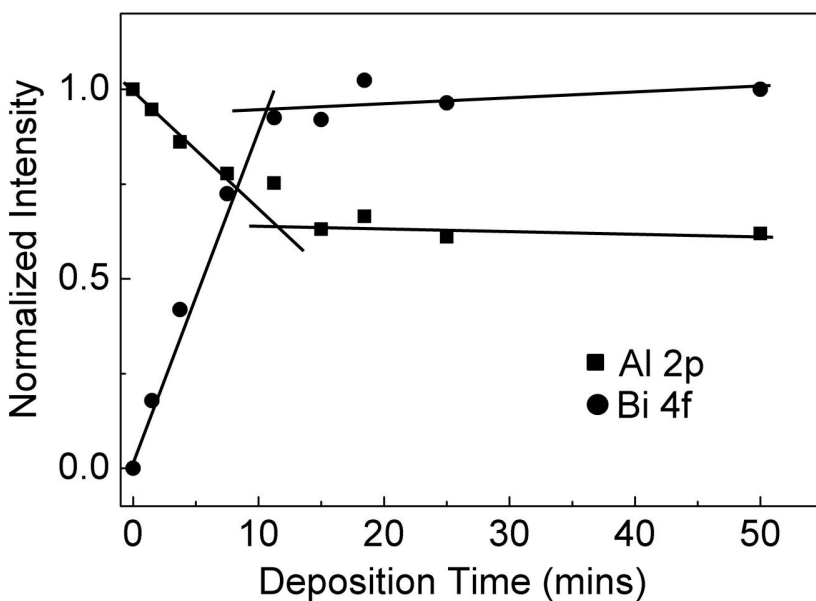
Figure 1. STM images taken of the fivefold surface of Al-Pd-M after Bi deposition. Bi multilayer islands of two different allotropes are present on the quasicrystalline wetting layer. Coverage of Bi is estimated at 4.1 ML. a) $395 \text{ nm} \times 500 \text{ nm}$ image displaying the stepped, rectangular $\{100\}$ -pseudo-cubic orientated Bi islands. b) $200 \text{ nm} \times 200 \text{ nm}$ scan displaying the stepped, $\{111\}$ -pseudo-cubic structure islands.

1 The {100}-pseudo-cubic islands are found to transform to the stable, {111}-
2 pseudo-cubic phase over time (Figure 1 b)). Occasionally a mixture of the two
3 phases was observed. Details of these STM results, and of the factors influencing
4 the morphological transition, have been published elsewhere [10].

5 As mentioned in Section 2, the evolution of the core-level photoemission peaks
6 was monitored as an increasing amount of Bi was adsorbed to determine the growth
7 mode. Figure 2 displays the variation in substrate (Al 2p) and film (Bi 4f) intensity
8 after each deposition. The peak areas were normalised to the maximum intensity
9 reading on each curve so that they may be compared on the same plot. A change
10 in gradient of the curve at a dose of around 11 min indicates the completion of the
11 monolayer preceding formation of the islands.
12

13 LEED patterns obtained from a complete deposited monolayer of Bi displayed
14 principal spots in a 1 x 1 pattern. Such a result indicates pseudomorphic growth
15 [5]. The LEED pattern for the Bi monolayer showed greater contrast than that of
16 the clean surface. This observation has previously been suggested to be due to the
17 larger electron scattering cross-section of the heavier Bi atoms rather than surface
18 reconstruction or differing instrument parameters [5].
19

20 A linear variation in intensity with increasing deposition and lack of further
21 breaks in the deposition curve is evidence for a Stranski-Krastanov (initial layer
22 plus island growth) type growth mode of Bi [14]. This observation is consistent
23 with the STM results discussed above.
24



25
26
27
28
29
30
31
32
33
34
35
36
37
38
39
40
41
42
43
44
45
46
47
48 Figure 2. Variation in Al 2p and Bi 4f intensity as a function of deposition time, showing line segments of
49 different gradients. The Al 2p intensity is normalized with respect to the clean surface and Bi 4f intensity
50 is normalised to the peak intensity and after 50 mins Bi deposition.

51
52 Figure 3 shows the desorption curve obtained by heating the sample with a
53 coverage of 56 MLE of Bi. The sample was heated to each temperature for a
54 duration of 10 minutes and then allowed to cool for 5 minutes before spectra were
55 recorded. The plot shows that the multilayer desorbs between 520-620 K. This
56 range agrees with previous studies which found the multilayer completely desorbed
57 at 620 K leaving a monolayer [9]. The ratio of intensities of Pd 3d to the Bi 4f
58 peak matches well with that of the monolayer transition in the deposition curves.
59
60

The monolayer coverage is relatively stable for a large temperature range of 620-800 K. The monolayer desorbed at 820 K leaving ≈ 0.5 ML on the surface. This coverage correlates with the previously determined point at which saturation of the pentagonal nucleation sites occurs and the pure growth regime begins [8]. At 900 K the Bi peak intensity is reduced to the background count indicating that all the adsorbate atoms have desorbed. This temperature is significantly higher than that reported in a previous study where the monolayer was estimated to desorb between 670-870 K [5]. However this estimate was inferred from an observed structural change without any direct chemical information.

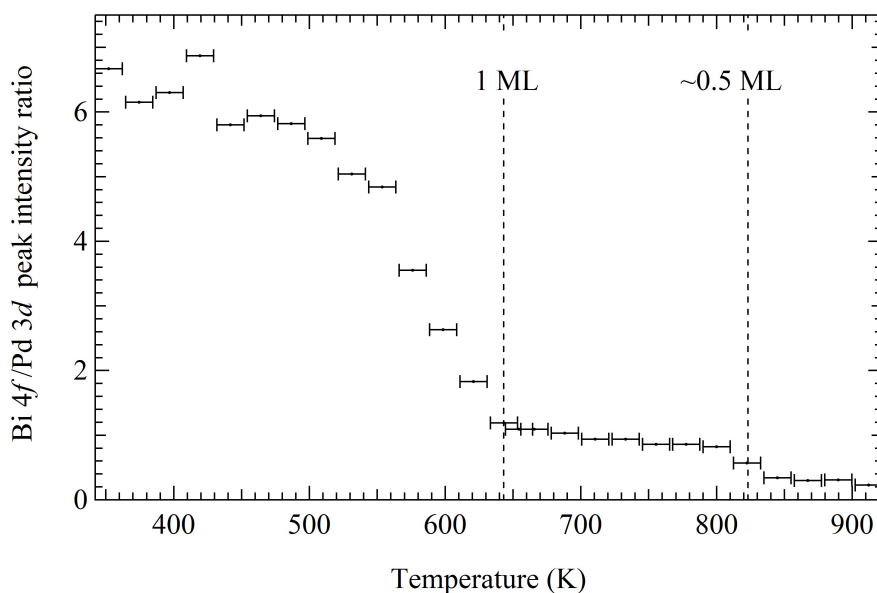


Figure 3. Desorption of Bi from the fivefold *i*-Al-Pd-Mn substrate: the plot shows the ratio of the Bi 4f to Pd 3d photoemission peak intensity as a function of increasing sample temperature.

4. Summary

XPS has been utilised to study Bi films adsorbed on the fivefold *i*-Al-Pd-Mn surface. The deposition curve supports a Stranski-Krastanov growth mode for Bi on the quasicrystal. The two plateaux in the desorption curve show the relative thermal stability of the monolayer and sub-monolayer coverages. The coverage of around 0.5 ML that is stable for a large high temperature range corresponds to the point at which the initial nucleation adsorption sites are saturated. The sub-monolayer coverage was found to desorb at 900 K leaving the clean substrate.

Acknowledgements

Thanks is extended to the EPSRC for part-funding this project under Grants EP/D05253X/1 and EP/D071828/1.

References

- [1] H.R. Sharma, M. Shimoda and A.P. Tsai, Adv. Phys. 56 (2007) p.403-464.

- 1 [2] J.A. Smerdon, L.H. Wearing, J.K. Parle, L. Leung, H.R. Sharma, J. Ledieu and R. McGrath, *Philos.*
2 *Mag.* 88 (2008) p.2073.
- 3 [3] P. Thiel, *Ann. Rev. Phys. Chem.* 59 (2008) p.129–152.
- 4 [4] R. McGrath, J.A. Smerdon, H.R. Sharma, W. Theis and J. Ledieu, *J. Phys.-Condensed Matter* 22
5 (2010) p.084022.
- 6 [5] K.J. Franke, H.R. Sharma, W. Theis, P. Gille, P. Ebert and K.H. Rieder, *Phys. Rev. Lett.* 89 (2002)
7 p.156104.
- 8 [6] J.A. Smerdon, H.R. Sharma, J. Ledieu and R. McGrath, *J. Phys.: Condens. Matter* 20 (2008) p.314005.
- 9 [7] J. Ledieu, L. Leung, L.H. Wearing, R. McGrath, T.A. Lograsso, D. Wu and V. Fournée, *Phys. Rev.*
10 *B.* 77 (2008) p.073409.
- 11 [8] J.A. Smerdon, J.K. Parle, L.H. Wearing, T.A. Lograsso, A.R. Ross and R. McGrath, *Phys. Rev. B*
12 78 (2008) p.075407.
- 13 [9] H.R. Sharma, V. Fournée, M. Shimoda, A.R. Ross, T.A. Lograsso, P. Gille and A.P. Tsai, *Phys. Rev.*
14 *B.* 78 (2008) p.155416.
- 15 [10] J.A. Smerdon, N. Cross, V.R. Dhanak, H.R. Sharma, K.M. Young, T.A. Lograsso, A.R. Ross and R.
16 McGrath, *J. Phys.: Condensed Matter* 22 (2010) p.345002.
- 17 [11] P. Hofmann, *Prog. Surf. Sci.* 81 (2006) p.191–245.
- 18 [12] R. McGrath, J. Ledieu, E.J. Cox, S. Haq, R.D. Diehl, C.J. Jenks, I. Fisher, A.R. Ross and T.A.
19 Lograsso, *J. Alloys Compounds* 342 (2002) p.432–436.
- 20 [13] Z. Papadopoulos, G. Kasner, J. Ledieu, E.J. Cox, N.V. Richardson, Q. Chen, R.D. Diehl, T.A. Lograsso,
21 A.R. Ross and R. McGrath, *Phys. Rev. B* 66 (2002) p.184207.
- 22 [14] G.E. Rhead, M.G. Barthes and C. Argile, *Thin Solid Films* 82 (1981) p.201–211.
- 23
24
25
26
27
28
29
30
31
32
33
34
35
36
37
38
39
40
41
42
43
44
45
46
47
48
49
50
51
52
53
54
55
56
57
58
59
60