



**HAL**  
open science

## Association between genetic variation in a region on chromosome 11 and schizophrenia in large samples from Europe

Sven Cichon, Marcella Rietschel, Manuel Mattheisen, Franziska Degenhardt, Thomas Mühleisen, Peter Kirsch, Christine Esslinger, Stefan Herms, Ditte Demontis, Michael Steffens, et al.

► **To cite this version:**

Sven Cichon, Marcella Rietschel, Manuel Mattheisen, Franziska Degenhardt, Thomas Mühleisen, et al.. Association between genetic variation in a region on chromosome 11 and schizophrenia in large samples from Europe. *Molecular Psychiatry*, 2011, 10.1038/mp.2011.80 . hal-00659044

**HAL Id: hal-00659044**

**<https://hal.science/hal-00659044v1>**

Submitted on 12 Jan 2012

**HAL** is a multi-disciplinary open access archive for the deposit and dissemination of scientific research documents, whether they are published or not. The documents may come from teaching and research institutions in France or abroad, or from public or private research centers.

L'archive ouverte pluridisciplinaire **HAL**, est destinée au dépôt et à la diffusion de documents scientifiques de niveau recherche, publiés ou non, émanant des établissements d'enseignement et de recherche français ou étrangers, des laboratoires publics ou privés.

## Association between genetic variation in a region on chromosome 11 and schizophrenia in large samples from Europe

*Running Title:* Variation in *AMBR1* conferring risk of schizophrenia

Marcella Rietschel<sup>1,29, ‡</sup>, Manuel Mattheisen<sup>2,3,4,29</sup>, Franziska Degenhardt<sup>2,3</sup>, GROUP Investigators<sup>5</sup>, Thomas W. Mühleisen<sup>2,3</sup>, Peter Kirsch<sup>6</sup>, Christine Esslinger<sup>6</sup>, Stefan Herms<sup>2,3</sup>, Ditte Demontis<sup>7</sup>, Michael Steffens<sup>4</sup>, Jana Strohmaier<sup>1</sup>, Britta Haenisch<sup>2,3</sup>, René Breuer<sup>1</sup>, Piotr M. Czerski<sup>8</sup>, Ina Giegling<sup>9</sup>, Eric Strengman<sup>10</sup>, Christine Schmael<sup>1</sup>, Ole Mors<sup>11</sup>, Preben Bo Mortensen<sup>12</sup>, David M. Hougaard<sup>13</sup>, Torben Ørntoft<sup>14</sup>, Paweł Kapelski<sup>8</sup>, Lutz Priebe<sup>2,3</sup>, F. Buket Basmanav<sup>2,3</sup>, Andreas J. Forstner<sup>2,3</sup>, Per Hoffmann<sup>2,3</sup>, Sandra Meier<sup>1</sup>, Susanne Moebus<sup>15</sup>, Michael Alexander<sup>2,3</sup>, Rainald Mössner<sup>16</sup>, H.-Erich Wichmann<sup>17,18</sup>, Stefan Schreiber<sup>19</sup>, Fernando Rivandeneira<sup>20,21</sup>, Albert Hofman<sup>21</sup>, Andre G Uitterlinden<sup>20,21</sup>, Thomas F. Wienker<sup>4</sup>, Johannes Schumacher<sup>2,3</sup>, Joanna Hauser<sup>8</sup>, Wolfgang Maier<sup>16</sup>, Rita M. Cantor<sup>22</sup>, Susanne Erk<sup>23,24</sup>, Thomas G. Schulze<sup>25,1</sup>, SGENE-plus consortium<sup>5</sup>, Nick Craddock<sup>26</sup>, Michael J. Owen<sup>26</sup>, Michael C. O'Donovan<sup>26</sup>, Anders D. Børglum<sup>7,27</sup>, Dan Rujescu<sup>9</sup>, Henrik Walter<sup>23,24</sup>, Andreas Meyer-Lindenberg<sup>6</sup>, Markus M. Nöthen<sup>2,3</sup>, Roel A. Ophoff<sup>10,22,30</sup>, Sven Cichon<sup>2,3,28,30, ‡</sup>

<sup>1</sup>Department of Genetic Epidemiology in Psychiatry, Central Institute of Mental Health, University of Heidelberg, Mannheim, Germany. <sup>2</sup>Department of Genomics, Life & Brain Center, University of Bonn, Bonn, Germany. <sup>3</sup>Institute of Human Genetics, University of Bonn, Bonn, Germany. <sup>4</sup>Institute for Medical Biometry, Informatics, and Epidemiology, University of Bonn, Bonn, Germany. <sup>5</sup>For a full list of members see Acknowledgements. <sup>6</sup>Dept of Psychiatry and Psychotherapy, Central Institute of Mental Health, Mannheim, Germany <sup>7</sup>Department of Human Genetics, The Bartholin Building, Aarhus University, Aarhus, Denmark. <sup>8</sup>Laboratory of Psychiatric Genetics, Department of Psychiatry, Poznan University of Medical Sciences, Poznan, Poland. <sup>9</sup>Division of Molecular and Clinical Neurobiology, Department of Psychiatry, Ludwig-Maximilians-University, Munich, Germany. <sup>10</sup>Department of Medical Genetics and Rudolf Magnus Institute of Neuroscience, University Medical Center Utrecht, Utrecht, The Netherlands. <sup>11</sup>Centre for Psychiatric Research, Aarhus University Hospital, Risskov, Denmark. <sup>12</sup>National Centre for Register-based Research, Aarhus University, Aarhus, Denmark <sup>13</sup>Section of Neonatal Screening and Hormones, Dept. Clinical Chemistry and Immunology, The State Serum Institute, Copenhagen, Denmark. <sup>14</sup>AROS Applied Biotechnology A/S and Department of Molecular Medicine, Aarhus University Hospital, Skejby, Aarhus, Denmark. <sup>15</sup>Institute of Medical Informatics, Biometry, and Epidemiology, University Duisburg-Essen, Essen, Germany. <sup>16</sup>Department of Psychiatry, University of Bonn, Bonn, Germany. <sup>17</sup>Institute of Epidemiology, Helmholtz Zentrum München, German Research Center for Environmental Health, Neuherberg, Germany. <sup>18</sup>Institute of Medical Informatics, Biometry and Epidemiology, Chair of Epidemiology, Ludwig-Maximilians-

University, Munich, Germany. <sup>19</sup>Institute of Clinical Molecular Biology, Christian-Albrechts University Kiel, Kiel, Germany. <sup>20</sup>Department of Internal Medicine, Genetics Laboratory, Erasmus Medical Center Rotterdam, Rotterdam, The Netherlands. <sup>21</sup>Department of Epidemiology, Erasmus University Medical Center, Rotterdam, The Netherlands. <sup>22</sup>UCLA Center for Neurobehavioral Genetics, Los Angeles, California, USA. <sup>23</sup>Department of Psychiatry, Division of Mind and Brain Research, Charite Medical University Berlin, Charité Campus Mitte, Berlin, Germany. <sup>24</sup>Division of Medical Psychology, Dept of Psychiatry and Psychotherapy, University of Bonn, Bonn, Germany. <sup>25</sup>Department of Psychiatry and Psychotherapy, Georg-August-University Göttingen, Göttingen, Germany. <sup>26</sup>Medical Research Council (MRC) Centre for Neuropsychiatric Genetics and Genomics, Department of Psychological Medicine and Neurology, School of Medicine, Cardiff University, Cardiff, UK. <sup>27</sup>Centre for Psychiatric Research, Aarhus University Hospital, Risskov, Denmark. <sup>28</sup>Institute of Neuroscience and Medicine (INM-1), Research Center Juelich, Juelich, Germany. <sup>29, 30</sup>These authors contributed equally to this work

‡Correspondence to:

Sven Cichon, PhD

Department of Genomics, Life & Brain Center, University of Bonn,  
Sigmund-Freud-Str. 25, D-53127 Bonn, Germany.

phone: +49 (0)228 6885 405 ; fax: +49 (0)228 6885 401 ;

email: sven.cichon@uni-bonn.de.

and

Marcella Rietschel, MD

Department of Genetic Epidemiology in Psychiatry,  
Central Institute of Mental Health, University of Heidelberg,  
J5, D-68159 Mannheim, Germany

phone: +49 (0)621 1703 6051; fax: +49 (0)621 1703 6055;

email: marcella.rietschel@zi-mannheim.de

**For Information on support for work please refer to the Acknowledgement**

## **Abstract**

Recent molecular studies have implicated common alleles of small to moderate effect and rare alleles with larger effect sizes in the genetic architecture of schizophrenia (SCZ). It is expected that the reliable detection of risk variants with very small effect sizes can only be achieved through the recruitment of very large samples of patients and controls (i.e. tens of thousands) , or large, potentially more homogeneous samples that have been recruited from confined geographical areas using identical diagnostic criteria. Applying the latter strategy, we performed a genome-wide association study (GWAS) of 1,169 clinically well-characterized and ethnically homogeneous SCZ patients from a confined area of Western Europe (464 from Germany, 705 from The Netherlands) and 3,714 ethnically matched controls (1,272 and 2,442, respectively). In a subsequent follow-up study of our top GWAS results, we included an additional 2,569 SCZ patients and 4,088 controls (from Germany, The Netherlands, and Denmark). Genetic variation in a region on chromosome 11 that contains the candidate genes *AMBRA1*, *DGKZ*, *CHRM4*, and *MDK* was significantly associated with SCZ in the combined sample ( $n= 11,540$ ;  $P= 3.89 \times 10^{-9}$ , OR= 1.25). This finding was replicated in 23,206 independent samples of European ancestry ( $P= 0.0029$ , OR= 1.11). In a subsequent imaging genetics study, healthy carriers of the risk allele exhibited altered activation in the cingulate cortex during a cognitive control task. The area of interest is a critical interface between emotion-regulation and cognition that is structurally and functionally abnormal in SCZ and bipolar disorder.

**Keywords:** genome-wide association study, GWAS, schizophrenia, common variation, imaging genetics

## Introduction

Schizophrenia (SCZ) is a severe psychiatric disorder characterized by fundamental and characteristic distortions of thought and perception. It has a life-time prevalence of around 0.5–1%. Formal genetic studies have shown that genetic factors contribute substantially to the disease risk. Meta-analyses of pooled data from 12 twin studies have estimated that susceptibility to SCZ has a heritability of approximately 80%<sup>1</sup>. Recent molecular studies have implicated common alleles of small to moderate effect and rare alleles with larger effect sizes in the genetic architecture of SCZ<sup>2</sup>. Genome-wide association studies (GWAS) using Single Nucleotide Polymorphism (SNP) array technologies have been applied to detect common risk alleles, and a total of 12 GWAS of SCZ have been published to date (**Table S3**). Common risk alleles in the major histocompatibility (MHC) region on chromosome 6 have so far shown the most statistically significant evidence of association<sup>3-5</sup>. Interestingly, the MHC region, which is involved in the immune response, has long been postulated to harbor variants conferring a risk for SCZ since there is evidence for linkage in this region<sup>6</sup> and research has suggested the involvement of infection in disease development<sup>7</sup>. Genome-wide significance has also been reported for risk alleles at *TCF4*<sup>3</sup>, *NGRN*<sup>3</sup>, and *ZNF804A*<sup>8</sup>.

All GWAS of SCZ performed to date have indicated that the strongest common genetic risk factors have odds ratios that are no greater than 1.15-1.20. In fact, recent molecular genetic evidence points to a substantial polygenic component to the risk of SCZ that involves a large number of common risk alleles of very small effect<sup>4</sup>. It is likely that the reliable detection of risk variants with very small effects can only be achieved through the study of very large samples of patients and controls (i.e. tens of thousands) or large, potentially more homogeneous samples that have been recruited from a confined geographical area using the same diagnostic criteria. Using the latter

strategy, we performed a GWAS of clinically well-characterized and ethnically homogeneous SCZ patients recruited from a confined area of Western Europe (Germany, The Netherlands, and Denmark). Our results suggest that genetic variation in a region on chromosome 11, which contains the candidate genes *AMBRA1*, *DGKZ*, *CHRM4*, and *MDK*, is implicated in the etiology of SCZ.

### ***Patients and Methods***

The following section provides details of sample recruitment and quality control for the GWAS dataset. Information concerning specific aspects of the GWAS dataset, and data from the follow-up samples is provided in the *SI Patients and Methods*.

#### *Sample Ascertainment and Selection for the GWAS sample*

All participating individuals provided written informed consent. The study protocols were approved by the respective institutional review boards or ethics committees.

*German Sample (Bonn - Mannheim).* The German SCZ patients used in the GWAS step ( $n= 487$ ) were recruited from consecutive hospital admissions and were all of German descent. Lifetime best estimate diagnoses were assigned according to DSM-IV criteria on the basis of multiple sources of information including structured interviews with the SCID<sup>9</sup> or SADS-L<sup>10</sup>, the OPCRIT<sup>11</sup>, medical records, and family history. Best estimate diagnoses were assigned by at least 2 experienced psychiatrists/psychologists. The controls were drawn from 3 population-based epidemiological studies: (A) PopGen<sup>12</sup> ( $n= 490$ ), (B) KORA<sup>13</sup> ( $n= 488$ ), and (C) the Heinz Nixdorf Recall (HNR,  $n= 383$ ) study<sup>14</sup> (Risk Factors, Evaluation of Coronary Calcification, and Lifestyle). The recruitment areas for PopGen, KORA, and HNR were located in: (i) Schleswig-Holstein (Northern Germany); (ii) Essen, Bochum, and Mühlheim

(Ruhr area); and (iii) Augsburg (Southern Germany), respectively. Ethnicity was assigned to patients and controls on the basis of self-reported ancestry.

*Dutch Sample (Utrecht and Rotterdam).* Inpatients and outpatients ( $n= 804$ ) were recruited from various psychiatric hospitals and institutions throughout the Netherlands. Detailed medical and psychiatric histories were collected, and this process included use of the Comprehensive Assessment of Symptoms and History (CASH)<sup>15</sup>, an instrument for assessing diagnosis and psychopathology. Only those patients with a DSM-IV diagnosis of SCZ were finally included as cases. The controls from Utrecht ( $n= 704$ ) were volunteers with no history of psychiatric disorder. The Rotterdam control individuals ( $n= 2302$ ) were drawn from a large population-based project on the genetics of complex traits and diseases which is financed by the Dutch government through the Netherlands Scientific Organization – Large Investments (NWO Groot; 175.010.2005.011). This prospective population-based cohort study of chronic disabling conditions in Dutch individuals aged 55 years and above is described elsewhere<sup>16,17</sup>. All patients and controls had at least 3 grandparents of Dutch ancestry.

#### *Sample ascertainment and Selection for the Imaging Genetics Study sample*

Subjects ( $n= 122$ ) were drawn from an ongoing large-scale multicenter imaging genetics study<sup>18</sup> (Esslinger et al. plus 7 subsequently scanned subjects) that is being conducted at two sites in Mannheim and Bonn, Germany. All participants were healthy German volunteers with parents and grandparents of European origin. None of the participants had any self-reported lifetime or family history of SCZ or affective disorder. All subjects provided written informed consent. The study was approved by the local ethics committees of the Universities of Heidelberg and Bonn.

#### *Genotyping and Quality Control for the GWAS and the Imaging Genetics Study*

Ethylenediaminetetraacetic acid anti-coagulated venous blood samples were collected from all participating individuals (GWAS and imaging genetics study). Lymphocyte DNA was isolated by salting-out<sup>19</sup> with saturated sodium chloride solution or by a Chemagic Magnetic Separation Module I (Chemagen, Baesweiler, Germany) used according to the manufacturer's recommendations. The GWAS dataset was assembled from 7 sub-datasets which were genotyped by: (i) Illumina's customer service, San Diego, CA, USA (all PopGen controls, all German SCZ patients); (ii) the Department of Genomics, Life & Brain Center, University of Bonn (all HNR controls); (iii) the Helmholtz Zentrum München, Germany (all KORA controls); (iv) The Southern California Genotyping Consortium (SCGC) at UCLA, Los Angeles, USA (all Dutch SCZ patients and  $n= 704$  Dutch controls); and (v) the genotyping facility of the ErasmusMC Biomics core facility, Rotterdam, The Netherlands ( $n= 2,302$  Dutch controls, including the controls for the follow-up sample). All genome-wide genotyping for the GWAS was performed on HumanHap550v3 BeadArrays using the Infinium II assay (Illumina, San Diego, CA, USA). The imaging genetics sample ( $n= 122$ ) was genotyped by the Department of Genomics, Life & Brain Center, University of Bonn. The genome-wide genotyping was performed on Human610-quad beadchips using the Infinium HD assay (Illumina, San Diego, CA, USA). For a discussion on the possible confounding of case/control status with plate and genotyping procedures please see the *SI Patients and Methods*.

We developed a protocol of filters for the stringent quality control (QC) of whole-genome and sub-whole genome datasets. This accounted for call rates (CR), heterozygosity, cross-contamination, population stratification, relatedness, non-random-missingness, Hardy-Weinberg equilibrium (HWE), minor allele frequency (MAF), and others. With the exception of the cluster plot investigations for the follow-up SNPs, each QC filter for the GWAS, the imaging genetics study, and the



follow-up datasets was performed using the PLINK toolset<sup>20</sup>. The samples from the Rotterdam study (controls for the GWAS and the replication step) underwent QC together with the other GWAS samples.

The QC protocol was applied to a total of 1,291 patients and 4,367 controls for the GWAS step. As a result, 375 individuals including 122 patients and 253 controls (representing 6.70%, 9.73%, and 5.80%, of the sample) as well as 86,037 SNPs (15.32% of the HumanHap550v3 BeadArray content) were excluded prior to the association analysis. The final GWAS data set was comprised of 464,030 autosomal (including PAR1+2) and 11,397 X-chromosomal SNPs, genotyped in 1,169 SCZ patients and 3,714 controls. An additional 400 controls were added to the Dutch follow-up dataset described above.

The QC protocol was also applied to the 122 healthy German individuals who participated in the imaging genetics study. As a result, one individual and 39,356 SNPs (6.64% of the Human610-quad BeadArray content of evaluable 592,532 SNPs) were excluded prior to the association analyses. The mean age of the remaining 121 individuals (43.4 % males) was 33.1 (SD 10.3). For the analysis of the imaging genetics data, only information for rs11819869, which was present in the post QC dataset, was extracted and analyzed.

A detailed description of the QC filters is provided in the *SI Patients and Methods*.

#### *Statistical analyses for GWAS and Follow-Up*

All association analyses were performed using PLINK<sup>20</sup> (v1.07). In the single-marker analysis, all autosomal (including PAR1 and PAR2) and gonosomal SNPs that passed QC checks were tested for association with SCZ using the Cochran-Mantel-Haenszel test (CMH) with 2 x 2 x K stratified tables  $\{disease \times SNP \mid cluster\}$  with K= 2 (assigning German and Dutch individuals to one cluster each) for the GWAS step,

K= 4 (one cluster for the German, Dutch, and Danish samples, respectively) for Replication 1, and K= 6 for the combined analysis. Following analysis of the initial GWAS, a set of 60 SNPs was chosen for the follow-up step using a top-down approach (Replication 1; more information on the selection of SNPs is provided in the *SI Patients and Methods*). The CMH was also applied to the replication sample as described above. In the replication analysis, the test statistic was one-tailed if the OR was in the same direction as in the GWAS. SNPs that exceeded the threshold for nominal significance ( $P= 0.05$ ) were identified. Finally, for all SNPs included in the replication step, a combined analysis of individuals from the GWAS and the replication step was performed using the CMH (K= 6; test statistic always two-tailed). The Breslow-Day test was used to investigate the homogeneity of the odds ratios for the replicated SNPs. The meta-analysis for the 15 independent samples of European ancestry (Replication 2) was performed using PLINK<sup>20</sup> (v1.07) and considering a fixed effect model. There was no evidence of heterogeneity (Cochrane's  $Q$ ). In cases where genome-wide data was available, the two-tailed  $P$ -value of the TREND test was corrected by the genomic inflation factor for the specific sample as calculated from the genome-wide data.

#### *A note on possible stratification*

We have assumed that our sample is characterized by a high degree of ethnic (and presumably genetic) homogeneity. Nonetheless, several steps were taken to minimize population stratification. Patients and controls were only included when a minimum of 3 grandparents originated from the respective country. Outliers were identified using 2 methods: 1) multidimensional scaling (MDS), and 2) outlier detection diagnostics as implemented in PLINK<sup>20</sup>. This was performed for the Dutch and German samples individually, and then in the combined sample (*Figure S6*, further information is provided in the *SI Patients and Methods*). Tests were applied to detect

differences in allele frequencies and missingness patterns between the single Dutch and German control samples (Rotterdam, Utrecht, Kiel, Munich, and Essen). Finally, association analyses were performed using a Cochran-Mantel-Haenszel test and a logistic regression with covariates derived from MDS analyses (first six dimensions) to minimize potential stratification effects (**Figure S5**, more information is provided in the ***SI Patients and Methods***).

#### *Imaging Genetics Study*

The participants of the imaging genetics study completed a battery of six cognitive tasks that have been used and validated previously in imaging genetics. Specifically, the following tasks were performed: (1) an associative learning task<sup>21</sup>, in which subjects learn and are then tested on face-job associations, (2) an n-back working memory task<sup>22</sup>, in which subjects are presented with a sequence of numbers and press a button corresponding either to the number currently seen (control condition, ‘0-back’) or the number seen two presentations previously (‘2-back’), (3) a theory of mind task<sup>23</sup>, in which subjects have to make inferences about the state of mind of a human based on a series of cartoons, (4) a flanker task<sup>24</sup> in which subjects have to perform or withhold a button press depending on a set of either congruent or incongruent stimuli, requiring cognitive control, (5) an implicit emotion recognition task<sup>25</sup>, in which subjects match pictures of angry and fearful faces, (6) a monetary reward task<sup>26</sup>, in which subjects receive or do not receive monetary rewards according to their performance in a reaction time task and a 5 minutes of rest period. Further information, including details of the imaging parameters, is provided in the ***SI Patients and Methods***.

For analysis of the influence of rs11819869, contrast images of incongruent > congruent trials were subjected to a two sample t-test with age, gender, and scanning site as covariates of no interest. To avoid small cell sizes, CT heterozygotes and TT

homozygotes were combined and compared with the CC homozygous group.

In view of our exploratory approach, we used a significant threshold of  $P < 0.0083$  (equivalent to  $P < 0.05$  with Bonferroni correction for 6 tasks), correcting for multiple comparisons across all voxels of the brain using family-wise error (FWE), based on Gaussian Random Fields theory. Further information is provided in the *SI Patients and Methods*.

## **Results**

We performed a GWAS of 1,169 clinically well-characterized and ethnically homogeneous SCZ patients who had been recruited from a confined area of Western Europe ( $n = 464$  from Germany,  $n = 705$  from The Netherlands) and 3,714 ethnically matched controls ( $n = 1,272$  and  $n = 2,442$ , respectively; **Table 1**). A total of 475,427 SNPs (Illumina's HumanHap550v3 BeadArray) were tested using the Cochran Mantel Haenszel test (CMH, for  $2 \times 2 \times K$  stratified tables, **Methods section**). No marker exceeded the widely acknowledged genome-wide significance threshold of  $5 \times 10^{-8}$ , or a Bonferroni-corrected significance threshold of  $1.1 \times 10^{-7}$ . The best result ( $P_{\text{GWAS}} = 4.50 \times 10^{-7}$ ) was for the SNP rs11154491, which is located in an intron of the *Rho GTPase activating protein 18* gene on chromosome 6 (*ARGHAP18*, **Figure S2**). An overview of the GWAS results is provided in **Figure 1a**.

Under the assumptions that the most significantly associated SNPs included true SCZ susceptibility factors and that the failure to reach genome-wide significance in the GWAS step was a result of insufficient power, we performed a subsequent follow-up analysis (Replication 1). A total of 43 SNPs were selected using a top down  $P$ -value approach in 2,569 additional patients and 4,088 controls from Western Europe (Germany/Munich: 913 patients/1,668 controls; Bonn/Mannheim: 600/1,146; The Netherlands: 178/400; Denmark: 878/874; **Table 1**). Nine of the 43 SNPs (21%)

showed nominal significance in the combined replication samples, and all with the same alleles as in the GWAS (**Table 2** and **Table S1a/b**). The strongest evidence for association was found for 4 highly correlated SNPs (rs7112229, rs11819869, rs7130141, and rs12575668). These 4 SNPs are located in intronic regions of the *activating molecule in beclin-1-regulated* gene (*AMBRA1*) on chromosome 11. The best SNP (rs11819869) showed  $P_{\text{REPLI}} = 5.04 \times 10^{-5}$  ( $P_{\text{CORR}} = 0.0022$ ). One further SNP (rs4309482) withstood Bonferroni correction ( $P_{\text{CORR}} = 0.013$ ) for the number of SNPs tested in the replication step. This SNP is located in an intergenic region of chromosome 18 between the *coiled-coil domain containing 68* gene (*CCDC68*) and the transcription factor 4 gene (*TCF4*). Our top GWAS SNP (rs11154491), which is located in *ARGHAP18* on chromosome 6q22.33, was not replicated ( $P_{\text{REPLI}} = 0.38$ ).

In an analysis of the combined samples (GWAS + follow-up;  $n = 3,738$  patients/ 7,802 controls; CMH,  $K = 6$ ), variation in the chromosome 11 region surpassed the threshold for genome-wide significance (rs11819869,  $P_{\text{COMB}} = 3.89 \times 10^{-9}$ , OR = 1.25, Figure 1b). A Breslow-Day test was performed across all of the analyzed samples for all SNPs that had withstood Bonferroni correction in the replication step. This revealed no significant differences in odds ratios ( $P > 0.05$ ) between the investigated samples. In support of this, subtraction of any one individual replication sample failed to alter the effect sizes to any substantial degree (**Table S1b**).

We then attempted to replicate our genome-wide significant result for rs11819869 in 15 independent samples of European ancestry (Replication 2; 4,734 patients and 18,472 controls). We observed significant association for the T risk allele of rs11819869, as had been observed in the GWAS study ( $P_{\text{META}} = 0.0029$ , OR = 1.11; **Table 3**). We then applied a functional magnetic resonance imaging (fMRI) test battery for imaging genetics in a total of 121 healthy subjects (53 males, 68 females) of German descent with no family history of affective disorder or SCZ. This

demonstrated a significant effect of the rs11819869 genotype on medial prefrontal activation during a flanker task which contrasted incongruent and congruent stimuli configurations ( $P < 0.05$ , family wise error corrected for multiple testing, Cluster size:  $K = 9$ , Maximum activation found at  $[-3, 36, -18]$ ,  $T(116) = 5.522$ ,  $P_{\text{CORR}} < 0.008$  (see ***Patients and Methods*** for details of the task and the statistics). Carriers of the risk allele showed increased activation during incongruent conditions, whereas homozygote carriers of the C-allele showed decreased activation (***Figure 2b***).

### ***Discussion***

The SNP rs11819869 is located in the gene *AMBRA1*, in a region of strong LD that spans approximately 360 kb ( $r^2 > 0.8$  based on HapMap Phase 2 CEU data<sup>27</sup>, ***Figure S3***). Other RefSeq genes in the LD region are *KIAA0652/ATG13*, *CHRM4*, *DGKZ*, *MDK*, *HARB11*, *ARGAPH1*, and *ZNF408*. In our initial GWAS, 11 of the 25 most significant SNPs were located in this region. Although this region also showed evidence for association in the GWAS study of the SGENE consortium<sup>3</sup>, it was not among the top findings selected for follow-up<sup>3</sup>.

*AMBRA1* plays a major role in the development of the nervous system and has been reported to be a member of the Autophagy Interaction Network (AIN)<sup>30</sup>. In mouse models, *AMBRA1* functional deficiency results in severe neural tube defects that are associated with impaired autophagy, accumulation of ubiquitinated proteins, unbalanced cell proliferation, and excessive apoptotic cell death<sup>28,29</sup>. The gene is highly expressed in the most ventral part of the undifferentiated neural tube during embryogenesis<sup>29</sup>. Another gene in the chromosome 11 region of strong LD (*KIAA0652/ATG13*) is also a member of the AIN<sup>30</sup> and acts as a regulator of autophagy<sup>30</sup>. Together with the association findings for genetic variation in *TCF4* and *NRGN*<sup>3</sup>, these reports and our findings may be regarded as supportive evidence for the

role of brain-development-genes in the etiology of SCZ.

Although *AMBRA1* is an interesting functional candidate gene and includes the top associated SNP, (**Figure 1b**, **Figure S3**) it is difficult to pinpoint the potential susceptibility gene on the basis of the genetic data alone due to the presence of strong LD in the associated region. Another very interesting gene that is covered by LD in this region is the *muscarinic acetylcholine receptor M4* gene (*CHRM4*). Neuropsychopharmacological and neuroimaging studies have produced strong evidence that muscarinic cholinergic receptors are involved in SCZ<sup>31</sup>. Studies of muscarinic receptor knockout (KO) mice have suggested that *CHRM4* has an impact on the homeostatic control of cholinergic activity and dopaminergic neurotransmission in mesolimbic and hippocampal brain regions<sup>32</sup>. Interestingly, the muscarinic agonist Xanomeline, which is selective for the CHRM1 and CHRM4 subtypes, exhibited functional dopamine antagonism and resulted in antipsychotic-like effects in rodent models predictive of antipsychotic behaviors<sup>32</sup>. Furthermore, a recent study proposed allosteric modulation of the muscarinic M<sub>4</sub> receptor as a potential approach to the treatment of SCZ<sup>33</sup>. Further information concerning the impact of *CHRM4* on the pharmaceutical treatment of SCZ is provided in the *SI*.

Another gene of interest in the LD region of chromosome 11 (**Figure 1b**, **Figure S3**) is the *diacylglycerol kinase zeta* gene (*DGKZ*). There are a total of 10 diacylglycerol kinase enzymes (DGKs) (DGKalpha, DGKbeta, DGKgamma, DGKdelta, DGKepsilon, DGKzeta, DGKeta, DGKtheta, DGKiota and DGKkappa) and these metabolize 1,2-diacylglycerol (DAG) to phosphatidic acid (PA). Diacylglycerol kinases are central to a wide range of signal transduction pathways of potential relevance to neuropsychiatric disorders<sup>34</sup>. The diacylglycerol kinase eta (DGKH), a key protein in the lithium-sensitive phosphatidyl inositol pathway, has recently been implicated in the etiology of bipolar disorder<sup>35</sup>. A further member of this protein

family, DGKbeta, has been reported to promote dendritic outgrowth and spine maturation in developing hippocampal neurons<sup>36</sup>. In addition, gene-wide evidence for association with SCZ has been reported for the gene that encodes for DGKiota (*DGKI*)<sup>33</sup>. One independent study<sup>3</sup> found evidence for association between SCZ and a *DGKI* variant. In view of these findings, *DGKZ* may represent a further promising candidate gene for SCZ in the LD region of chromosome 11.

Last but not least, *Midkine* (*MDK*) is an interesting candidate gene in the region of our top finding. It has been shown that *Mdk*(*-/-*) mice exhibited a delayed hippocampal development with impaired working memory and increased anxiety<sup>37</sup>. In addition, midkine was found to accumulate in senile plaques in the hippocampus of patients with Alzheimer's disease<sup>38</sup>. Ohgake et al. (2009) reported that *Mdk*(*-/-*) mice showed a significantly disrupted Prepulse inhibition (PPI) test when compared to *Mdk*(*+/+*) mice<sup>39</sup>. This is interesting, because PPI has previously been shown to be a valuable tool for evaluating models or model organisms relevant to schizophrenia<sup>40</sup>. The PPI reduction was compensated when *Mdk*(*-/-*) mice were pre-treated with either haloperidol or clozapine (both known to reverse PPI deficits)<sup>39</sup>. In view of their findings, Ohgake et al. (2009) hypothesized, that *Mdk*(*-/-*) mice might act as a putative animal model of schizophrenia<sup>39</sup>.

Since none of the 11 top SNPs, which are all located in introns of *AMBR1*, have any known disease causing function, the SNAP tool<sup>41</sup> was used to test whether our top SNP (rs11819869) was in strong LD ( $r^2 > 0.8$ , based on HapMap<sup>27</sup> CEU Phase 2 and 3 data) with SNPs that are functional variants. We found that a *DGKZ* splice-site variant (rs2046768) was in strong LD with our top SNP ( $r^2 = 0.935$  for HapMap<sup>10</sup> CEU data of Phase 2 release 22, **Figure S3**). Since this SNP was not present in our post QC dataset, it was necessary to impute the information for the GWAS dataset using the strategy described in the **SI Patients and Methods** (rs2046768,  $P_{\text{IMPUT}} = 8.79$



$\times 10^{-5}$ ). Although the result for the functional variant itself lags behind the GWAS result for the top SNP (rs11819869,  $P_{\text{GWAS}} = 4.71 \times 10^{-6}$ ), we cannot excluded the possibility that this is the functionally relevant effect that was picked up by our top SNP in AMBRA1.

Irrespective of which specific gene in the region is tagged by the identified SNPs, the impact of the risk allele on brain function and SCZ can be tested using imaging genetics. This approach has high specificity when applied to risk genes for SCZ<sup>42</sup>. The stringent statistics statistical approach, which combines Bonferroni correction over tasks with family-wise error correction over brain regions tested, provides strong protection against false positive findings<sup>42</sup>. The present results therefore indicate a regionally specific impact on the function of the subgenual cingulate during a cognitive control task. This represents a critical interface between emotion regulation and cognition that is structurally<sup>43</sup> and functionally<sup>44</sup> abnormal in SCZ and bipolar disorder. The present findings therefore provide evidence that the identified risk allele is functional in a neural system of relevance to the disorder.

Our second best result was for rs4309482 ( $P_{\text{COMB}} = 9.68 \times 10^{-7}$ , OR=0.87, **Figure 1c**), which is located near *CCDC68* and *TCF4* on chromosome 18. This SNP, unlike the SNPs in the chromosome 11 region, was included in the follow-up of the SGENE study and achieved a combined *P*-value of  $7.1 \times 10^{-5}$  (Supplementary Table 2 in Stefansson et al.<sup>3</sup>). However, since a substantial proportion of our combined case sample (and a smaller proportion of our control sample) was included in that study, our result for this SNP cannot be regarded as an independent replication.

In summary, the present study has identified a susceptibility region for SCZ on chromosome 11 which contains four excellent functional candidate genes: *AMBRA1*, *DGKZ*, *CHRM4*, and *MDK*. In addition, we found evidence that the identified risk allele is functional in a neural system that is of relevance to the disorder. The aim of

future studies will be to determine which of the genes in the region contribute to the risk for SCZ. *CHRM4* is of particular interest as it may lead to novel therapeutic interventions for SCZ.

## ACKNOWLEDGMENTS

We are grateful to all of the patients who contributed to this study. We also thank the probands from the community-based cohorts of PopGen, KORA, the Heinz Nixdorf Recall (HNR) study, the Rotterdam Elderly Study, as well as the Munich controls. This study was supported by the German Federal Ministry of Education and Research (BMBF), within the context of the National Genome Research Network plus (NGFNplus) and the MoodS-Net (grant 01GS08144 to S.C. and M.M.N., grant 01GS08147 to M.R.). M.M.N. also received support from the Alfried Krupp von Bohlen und Halbach-Stiftung. Further funding came from the European Union Seventh Framework Programme [FP7/2007-2011] under grant agreement n° 242257 (ADAMS). The Heinz Nixdorf Recall cohort was established with the support of the Heinz Nixdorf Foundation (Dr. G. Schmidt, Chairman). This study was also supported by The Polish Ministry of Science and Higher Education (grant N N402 244035 to P.M.C.), The Danish Council for Strategic Research (grant no. 2101-07-0059), H. Lundbeck A/S, the Faculty of Health Sciences, Aarhus University, and the Stanley Medical Research Institute. Genotyping of the Dutch samples from Utrecht was sponsored by NIMH funding, R01 MH078075.

Supplementary information is available at Molecular Psychiatry's website.

### ***Genetic Risk and Outcome in Psychosis (GROUP investigators)***

René S. Kahn<sup>1</sup>, Don H. Linszen<sup>2</sup>, Jim van Os<sup>3</sup>, Durk Wiersma<sup>4</sup>, Richard Bruggeman<sup>4</sup>, Wiepke Cahn<sup>1</sup>, Lieuwe de Haan<sup>2</sup>, Lydia Krabbendam<sup>3</sup> & Inez Myin-Germeys<sup>3</sup>

<sup>1</sup>Department of Psychiatry, Rudolf Magnus Institute of Neuroscience, University Medical Center Utrecht, Utrecht, The Netherlands. <sup>2</sup>Academic Medical Centre University of Amsterdam, Department of Psychiatry, Amsterdam, The Netherlands. <sup>3</sup>Maastricht University Medical Centre, South Limburg Mental Health Research and Teaching Network, Maastricht, The Netherlands. <sup>4</sup>University Medical Center Groningen, Department of Psychiatry, University of Groningen, Groningen, The Netherlands.



## **SGENE-plus consortium**

(Only those persons responsible for the samples of Replication 2 are listed)

Hreinn Stefansson<sup>1</sup>, Stacy Steinberg<sup>1</sup>, Omar Gustafsson<sup>1</sup>, Engilbert Sigurdsson<sup>2</sup>, Hannes Petursson<sup>2</sup>, Augustine Kong<sup>1</sup>, Kari Stefansson<sup>1</sup>, Olli P.H. Pietiläinen<sup>3,4</sup>, Annamari Tuulio-Henriksson<sup>5</sup>, Tiina Paunio<sup>6</sup>, Jouko Lonnqvist<sup>5</sup>, Jaana Suvisaari<sup>5</sup>, Leena Peltonen<sup>3,4</sup>, Mirella Ruggeri<sup>7</sup>, Sarah Tosato<sup>7</sup>, Muriel Walshe<sup>8</sup>, Robin Murray<sup>8</sup>, David A. Collier<sup>8</sup>, David St Clair<sup>9</sup>, Thomas Hansen<sup>10</sup>, Andres Ingason<sup>10</sup>, Klaus D. Jakobsen<sup>10</sup>, Linh Duong<sup>10</sup>, Thomas Werge<sup>10</sup>, Ingrid Melle<sup>11</sup>, Ole A. Andreassen<sup>12</sup>, Srdjan Djurovic<sup>12</sup>, István Bitter<sup>13</sup>, János M. Réthelyi<sup>13</sup>, Lilia Abramova<sup>14</sup>, Vasily Kaleda<sup>14</sup>, Vera Golimbet<sup>14</sup>, Erik G. Jönsson<sup>15</sup>, Lars Terenius<sup>15</sup>, Ingrid Agartz<sup>15</sup>, Ruud van Winkel<sup>16,17</sup>, Gunter Kenis<sup>16</sup>, Marc De Hert<sup>17</sup>, Jan Veldink<sup>18</sup>, Carsten Wiuf<sup>19</sup>, Michael Didriksen<sup>20</sup>

<sup>1</sup>*deCODE genetics, Sturlugata 8, IS-101, Reykjavik, Iceland.* <sup>2</sup>*Department of Psychiatry, National University Hospital, Hringbraut, IS-101 Reykjavik, Iceland.* <sup>3</sup>*Institute for Molecular Medicine Finland FIMM and Department of Medical Genetics, University of Helsinki, FI-00014 Helsinki Finland.* <sup>4</sup>*Wellcome Trust Sanger Institute, Cambridge CB10 1SA, UK.* <sup>5</sup>*Department of Mental Health and Alcohol Research, National Public Health Institute, Mannerheimintie 166, FI-00300 Helsinki, Finland.* <sup>6</sup>*Health Genomics Unit, National Institute for Health and Welfare THL, FI-00270 Helsinki, Finland.* <sup>7</sup>*Section of Psychiatry and Clinical Psychology, University of Verona, 37134 Verona, Italy.* <sup>8</sup>*Institute of Psychiatry, King's College, London SE5 8AF, UK.* <sup>9</sup>*Department of Mental Health, University of Aberdeen, Royal Cornhill Hospital, Aberdeen AB25 2ZD, UK.* <sup>10</sup>*Institute of Biological Psychiatry, Mental Health Centre Sct. Hans Copenhagen University Hospital, DK-4000 Roskilde, Denmark.* <sup>11</sup>*Departments of Medical Genetics, Ulleval University Hospital, Institute of Psychiatry, University of Oslo, Kirkeveien 166, N-0407 Oslo, Norway.* <sup>12</sup>*Dept. of Psychiatry, Ullevål University Hospital and Institute of Psychiatry, University of Oslo, Kirkeveien 166, N-0407 Oslo, Norway.* <sup>13</sup>*Semmelweis University, Department of Psychiatry and Psychotherapy, Budapest, Hungary.* <sup>14</sup>*Mental Health Research Center, Russian Academy of Medical Sciences, Zagorodnoe sh. 2/2, 117152 Moscow, Russia.* <sup>15</sup>*Department of Clinical Neuroscience, HUBIN project, Karolinska Institutet and Hospital, R5:00, SE-171 76 Stockholm, Sweden.* <sup>16</sup>*Department of Psychiatry and Psychology, School of Mental Health and Neuroscience, European Graduate School of Neuroscience (EURON), South Limburg Mental Health Research and Teaching Network (SEARCH), Maastricht University Medical Centre, 6200 MD Maastricht, The Netherlands.* <sup>17</sup>*University Psychiatric Centre Catholic University Leuven, Leuvensesteenweg 517, B-3070 Kortenberg, Belgium.* <sup>18</sup>*Rudolf Magnus Institute of Neuroscience, Dept of Neurology, UMC Utrecht, 3584 CG Utrecht, The Netherlands.* <sup>19</sup>*Bioinformatics Research Centre, Aarhus University, DK-8000 Aarhus C, Denmark.* <sup>20</sup>*Discovery Biology Research, H. Lundbeck A/S, Ottiliavej 9, DK-2500 Valby, Denmark.*

**Conflict of interest**

The authors declare no conflict of interest.

## References

1. Sullivan PF, Kendler KS, Neale MC. Schizophrenia as a complex trait: evidence from a meta-analysis of twin studies. *Arch Gen Psychiatry* 2003; **60**: 1187-1192.
2. Williams HJ, Owen MJ, O'Donovan MC. New findings from genetic association studies of schizophrenia. *J Hum Genet* 2009; **54**: 9-14.
3. Stefansson H, Ophoff RA, Steinberg S, Andreassen OA, Cichon S, Rujescu D et al. Common variants conferring risk of schizophrenia. *Nature* 2009; **460**: 744-747.
4. International Schizophrenia Consortium, Purcell SM, Wray NR, Stone JL, Visscher PM, O'Donovan MC et al. Common polygenic variation contributes to risk of schizophrenia and bipolar disorder. *Nature* 2009; **460**: 748-752.
5. Shi J, Levinson DF, Duan J, Sanders AR, Zheng Y, Pe'er I et al. Common variants on chromosome 6p22.1 are associated with schizophrenia. *Nature* 2009; **460**: 753-757.
6. Lewis CM, Levinson DF, Wise LH, DeLisi LE, Straub RE, Hovatta I et al. Genome scan meta-analysis of schizophrenia and bipolar disorder, part II: Schizophrenia. *Am J Hum Genet* 2003; **73**: 34-48.
7. Brown AS and Derkits EJ. Prenatal infection and schizophrenia: a review of epidemiologic and translational studies. *Am J Psychiatry* 2010; **167**: 261-280.
8. O'Donovan MC, Craddock N, Norton N, Williams H, Peirce T, Moskvina V et al. Identification of loci associated with schizophrenia by genome-wide association and follow-up. *Nat Genet* 2008; **40**: 1053-1055.
9. First MB, Spitzer RL, Gibbon M, Williams JBW. *Structured clinical interview for DSM-IV axis I disorders*. New York State Psychiatric Institute, Biometrics Research, New York, 1994.
10. Spitzer RL, Endicott J and Robins E. Research diagnostic criteria: rationale and reliability. *Arch Gen Psychiatry* 1978; **35**: 773-782.
11. McGuffin P, Farmer A and Harvey I. A polydiagnostic application of operational criteria in studies of psychotic illness. Development and reliability of the OPCRIT system. *Arch Gen Psychiatry* 1991; **48**: 764-770.
12. Krawczak M, Nikolaus S, von Eberstein H, Croucher PJ, El Mokhtari NE, Schreiber S. PopGen: Population-based recruitment of patients and controls for the analysis of complex genotype-phenotype relationships. *Community Genet* 2006; **9**: 55-61.
13. Wichmann HE, Gieger C, Illig T; MONICA/KORA Study Group. KORA-gen – Resource for population genetics, controls and a broad spectrum of disease phenotypes. KORA- gen – Ressource für Bevölkerungsgenetik, Kontrolle und ein breites Spektrum an Krankheitsphänotypen. *Gesundheitswesen* 2005; **67**: S26-S30.
14. Schmermund A, Möhlenkamp S, Stang A, Grönemeyer D, Seibel R, Hirche H et al. Assessment of clinically silent atherosclerotic disease and established and novel risk factors for predicting myocardial infarction and cardiac death in healthy middle-aged subjects: rationale and design of the Heinz Nixdorf Recall Study. *Am Heart J* 2002; **144**: 212-218.
15. Andreasen NC, Flaum M, Arndt S. The Comprehensive Assessment of Symptoms and History (CASH). An instrument for assessing diagnosis and psychopathology. *Arch Gen Psychiatry* 1992; **49**: 615-623.
16. Hofman A, Breteler MM, van Duijn CM, Krestin GP, Pols HA, Stricker BH et al. The Rotterdam Study: objectives and design update. *Eur J Epidemiol* 2007; **22**: 819-829.
17. Hofman A, Grobbee DE, de Jong PT, van den Ouweland FA. Determinants of disease and disability in the elderly: the Rotterdam Elderly Study. *Eur J Epidemiol* 1991; **7**: 403-422.
18. Esslinger C, Walter H, Kirsch P, Erk S, Schnell K, Arnold C et al. Neural mechanisms of a genome-wide supported psychosis variant. *Science* 2009; **324**: 605.
19. Miller SA, Dykes DD, Polesky HF. A simple salting out procedure for extracting DNA from Human nucleated cells. *Nucleic Acids Res* 1988; **16**: 1215.
20. Purcell S, Neale B, Todd-Brown K, Thomas L, Ferreira MA, Bender D et al. PLINK: a tool set for whole-genome association and population-based linkage analyses. *Am J Hum Genet* 2007; **81**: 559-575.
21. Erk S, Meyer-Lindenberg A, Schnell K, Opitz von Boberfeld C, Esslinger C, Kirsch P et al. Altered neural function in carriers of a bipolar disorder variant with genome-wide support. *Arch Gen Psychiatry* 2010; **67**: 803-811.
22. Callicott JH, Ramsey NF, Tallent K, Bertolino A, Knable MB, Coppola R et al. Functional magnetic resonance imaging brain mapping in psychiatry: methodological issues illustrated in a study of working memory in schizophrenia. *Neuropsychopharmacology* 1998; **18**: 186-196.
23. Walter H, Schnell K, Erk S, Arnold C, Kirsch P, Esslinger C et al. Effects of a genome-wide supported psychosis risk variant on neural activation during a theory-of-mind task. *Mol Psychiatry* 2010; e-pub ahead of print 16 March 2010; doi:10.1038/mp.2010.18.

24. Meyer-Lindenberg A, Buckholtz JW, Kolachana B, Hariri A, Pezawas L, Blasi G et al. Neural mechanisms of genetic risk for impulsivity and violence in humans. *Proc Natl Acad Sci U S A* 2006; **103**: 6269-6274.
25. Hariri AR, Tessitore A, Mattay VS, Fera F, Weinberger DR. The amygdala response to emotional stimuli: a comparison of faces and scenes. *Neuroimage* 2002; **17**: 317-323.
26. Kirsch P, Schienle A, Stark R, Sammer G, Blecker C, Walter B et al. Anticipation of reward in a nonaversive differential conditioning paradigm and the brain reward system: an event-related fMRI study. *Neuroimage* 2003; **20**: 1086-1095.
27. The International HapMap Consortium. A haplotype map of the human genome. *Nature* 2005; **437**: 1299-1320.
28. Fimia GM, Stoykova A, Romagnoli A, Giunta L, Di Bartolomeo S, Nardacci R et al. Ambra1 regulates autophagy and development of the nervous system. *Nature* 2007; **447**: 1121-1125.
29. Cecconi F, Di Bartolomeo S, Nardacci R, Fuoco C, Corazzari M, Giunta L et al. A novel role for autophagy in neurodevelopment. *Autophagy* 2007; **3**: 506-508.
30. Behrends C, Sowa ME, Gygi SP, Harper JW. Network organization of the human autophagy system. *Nature* 2010; **466**: 68-76.
31. Scarr E. Muscarinic Receptors in Psychiatric Disorders - Can We Mimic 'Health'? *Neurosignals* 2009; **17**: 298-310.
32. Raedler TJ and Tandon R. Cholinergic mechanisms in schizophrenia: Current concepts. *Curr Psychosis Therapeutics Rep* 2006; **4**: 20-26.
33. Chan WY, McKinzie DL, Bose S, Mitchell SN, Witkin JM, Thompson RC et al. Allosteric modulation of the muscarinic M4 receptor as an approach to treating schizophrenia. *Proc Natl Acad Sci U S A* 2008; **105**: 10978-10983.
34. Moskvina V, Craddock N, Holmans P, Nikolov I, Pahwa JS, Green E et al. Gene-wide analyses of genome-wide association data sets: evidence for multiple common risk alleles for schizophrenia and bipolar disorder and for overlap in genetic risk. *Mol Psychiatry* 2009; **14**: 252-260.
35. Baum AE, Akula N, Cabanero M, Cardona I, Corona W, Klemens B et al. A genome-wide association study implicates diacylglycerol kinase eta (DGKH) and several other genes in the etiology of bipolar disorder. *Mol Psychiatry* 2008; **13**: 197-207.
36. Hozumi Y, Watanabe M, Otani K, Goto K. Diacylglycerol kinase beta promotes dendritic outgrowth and spine maturation in developing hippocampal neurons. *BMC Neurosci* 2009; **10**: 99.
37. Nakamura E, Kadomatsu K, Yuasa S, Muramatsu H, Mamiya T, Nabeshima T et al. Disruption of the midkine gene (Mdk) resulted in altered expression of a calcium binding protein in the hippocampus of infant mice and their abnormal behaviour. *Genes Cells* 1998; **3**: 811-22.
38. Yasuhara O, Muramatsu H, Kim SU, Muramatsu T, Maruta H, McGeer PL. Midkine, a novel neurotrophic factor, is present in senile plaques of Alzheimer disease. *Biochem Biophys Res Commun* 1993; **192**: 246-251.
39. Ohgake S, Shimizu E, Hashimoto K, Okamura N, Koike K, Koizumi H. et al. Dopaminergic hypofunctions and prepulse inhibition deficits in mice lacking midkine. *Prog Neuropsychopharmacol Biol Psychiatry* 2009; **33**: 541-546.
40. Swerdlow NR, Weber M, Qu Y, Light GA, Braff DL. Realistic expectations of prepulse inhibition in translational models for schizophrenia research. *Psychopharmacology (Berl)* 2008; **199**: 331-388.
41. Johnson AD, Handsaker RE, Pulit SL, Nizzari MM, O'Donnell CJ, de Bakker PI. SNAP: A web-based tool for identification and annotation of proxy SNPs using HapMap. *Bioinformatics* 2008; **24**: 2938-2939.
42. Meyer-Lindenberg A, Nicodemus KK, Egan MF, Callicott JH, Mattay V, Weinberger DR. False positives in imaging genetics. *Neuroimage* 2008; **40**: 655-661.
43. Koo MS, Levitt JJ, Salisbury DF, Nakamura M, Shenton ME, McCarley RW. A cross-sectional and longitudinal magnetic resonance imaging study of cingulate gyrus gray matter volume abnormalities in first-episode schizophrenia and first-episode affective psychosis. *Arch Gen Psychiatry* 2008; **65**: 746-760.
44. Rasetti R, Mattay VS, Wiedholz LM, Kolachana BS, Hariri AR, Callicott JH et al. Evidence that altered amygdala activity in schizophrenia is related to clinical state and not genetic risk. *Am J Psychiatry* 2009; **166**: 216-225.



## Figure Legend

**Figure 1:** Association results for the GWAS and the 2 best supported genes from the follow-up study (replication 1). **(a)** Manhattan plot. Regional plots depicting **(b)** *AMBRA1/CHRM4/DGKZ/MDK* region and **(c)** *CCDC68/TCF4* region. The best-associated marker from the GWAS (enlarged red diamond) is centered in a genomic window of 1 Mb (hg18, RefSeq genes); its  $P$ -value from the combined analysis ( $P_{\text{COMB}}$ ) is shown (enlarged blue diamond). The LD strength ( $r^2$ ) between the sentinel SNP from the GWAS and its flanking markers is demonstrated by the red (high) to white (low) colored bar. The recombination rate (cM/Mb; second y-axis) is plotted in blue, according to HapMap<sup>27</sup> CEU.

**Figure 2:** Effect of the rs11819869 genotype on brain activation during a flanker task (contrast incongruent trials > congruent trials). **(a)** The only cluster showing a significant group difference between carriers of at least one T allele and homozygote C allele carriers after correction for multiple testing. ( $P < 0.05$ , family wise error corrected for the entire brain and the number of different tasks tested). **(b)** Mean contrast estimates (+/- standard errors) for the significant cluster, reflecting an increased activation during incongruent trials for the T-allele carriers and during congruent trials for participants homozygous for the C allele.

**Table 1:** Descriptive data for schizophrenia patients and controls following quality control

	GWAS				Follow-up study (Replication 1)							
	Germany (Bonn – Mannheim)		The Netherlands		Germany (Munich)		The Netherlands		Germany (Bonn – Mannheim)		Denmark (Aarhus)	
	Patients	Controls	Patients	Controls	Patients	Controls	Patients	Controls	Patients	Controls	Patients	Controls
Individuals	464	1272	705	2442	913	1668	178	400	600	1146	878	874
Males (in %)	233 (50.1%)	649 (51.0%)	539 (76.5%)	1224 (50.1%)	572 (62.7%)	810 (48.6%)	124 (69.7%)	165 (41.3%)	372 (62.0%)	566 (49.4%)	479 (54.8%)	475 (54.3%)
Mean age at recruitment in years (s.d.)	34.1 (11.0)	50.4 (11.4)	34.4 (13.1)	59.1 (18.3)	37.7 (11.7)	49.5 (16.0)	37.9 (10.9)	70.0 (9.5)	38.4 (12.3)	46.5 (15.8)	20.1 (2.7)	20.1 (2.7)
Mean age of onset in years (s.d.)	21.9 (6.5)	N/A	N/A	N/A	23.6 (8.7)	N/A	N/A	N/A	29.1 (9.5)	N/A	18.9 (2.8)	N/A

N/A, not applicable or not available; s.d., standard deviation

**Table 2:** Nine SNPs replicated in the follow-up study (Replication 1) with the same alleles as in the GWAS

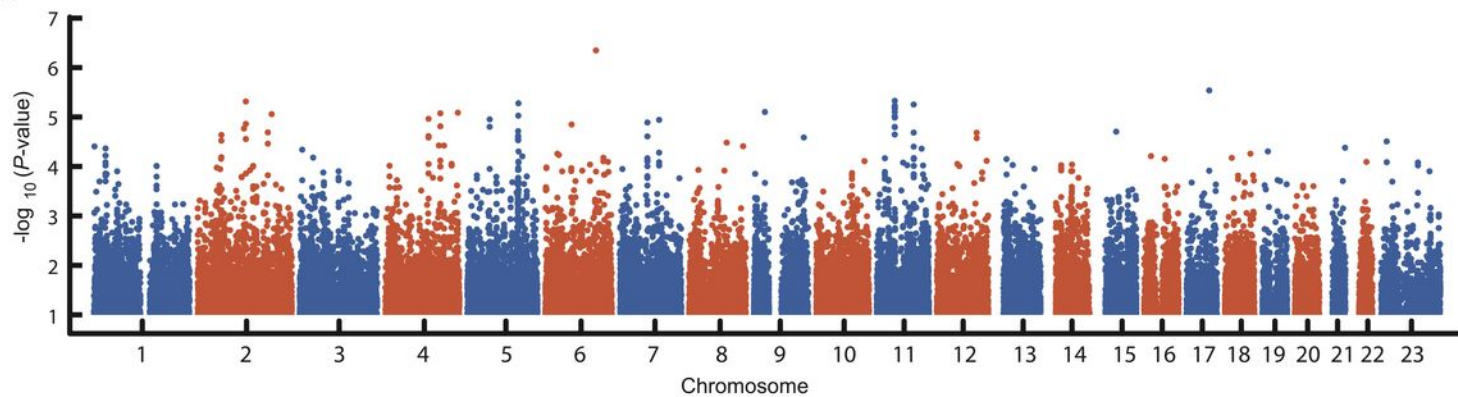
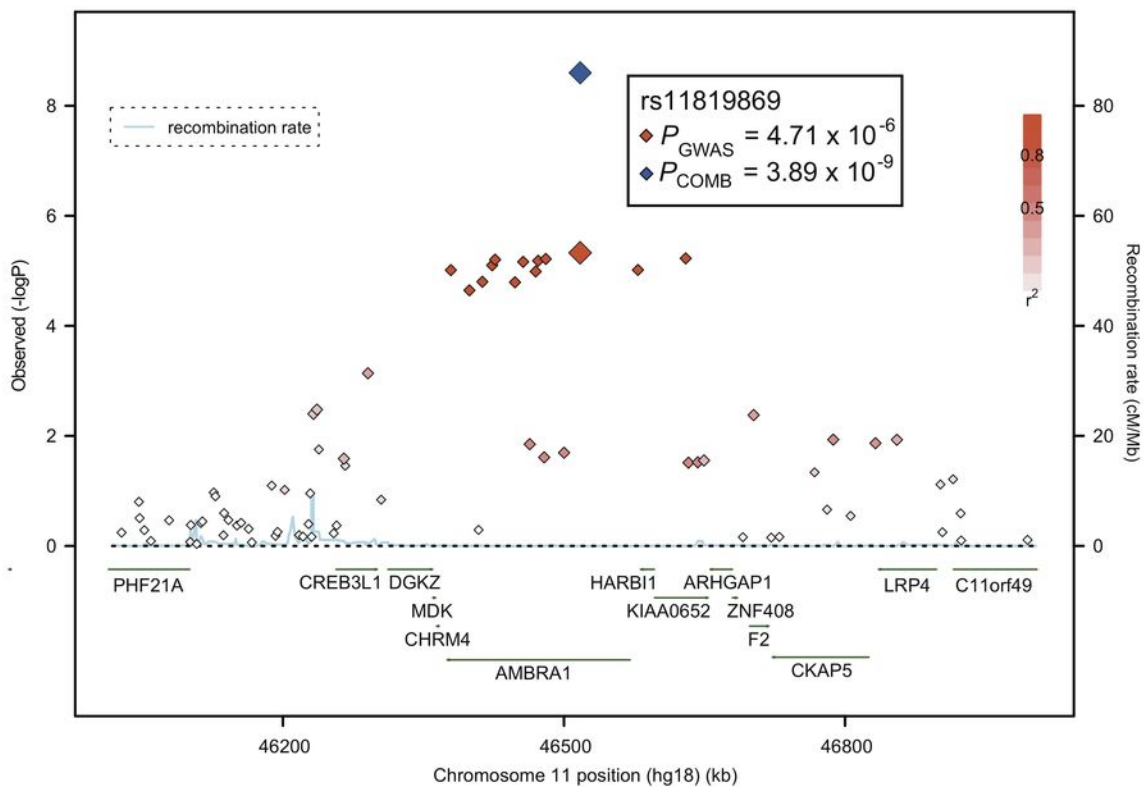
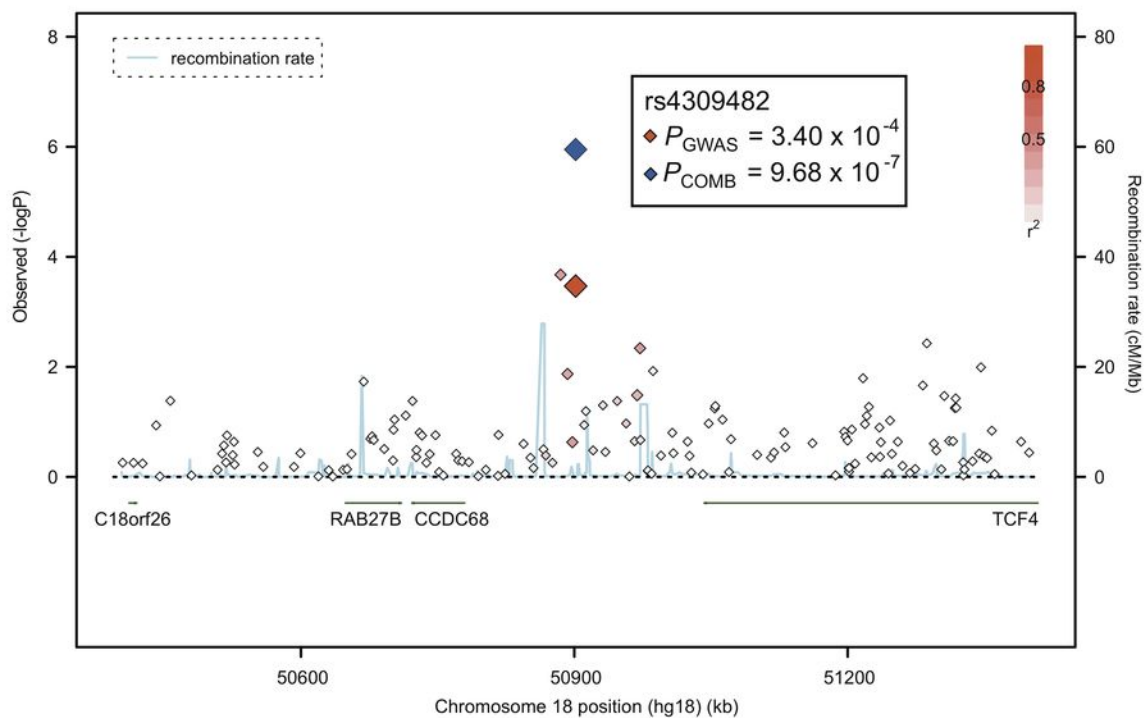
SNP data			Association data										Gene data		
SNP	Chr.	Alleles	GWAS		Replication 1				Combined analysis (GWAS + Replication 1)				Nearest gene or transcript		
			CMH (K= 2)	MAF	CMH (K= 4)	MAF	CMH (K= 6)	MAF							
			$P_{\text{GWAS}}$	OR	Patients <i>n</i> = 1169	Controls <i>n</i> = 3714	$P_{\text{REPLI}}$	OR	Patients <i>n</i> = 2569	Controls <i>n</i> = 4088	$P_{\text{COMB}}$	OR	Patients <i>n</i> = 3738	Controls <i>n</i> = 7802	
<b>rs11819869</b>	11p11.2	T/C	$4.71 \times 10^{-6}$	1.32	0.19	0.15	$5.04 \times 10^{-5}$	1.20	0.18	0.16	$3.89 \times 10^{-9}$	1.25	0.19	0.16	<i>AMBRA1</i> , intronic
<b>rs7112229</b>	11p11.2	T/C	$1.03 \times 10^{-5}$	1.32	0.18	0.15	$5.32 \times 10^{-5}$	1.21	0.17	0.14	$7.38 \times 10^{-9}$	1.25	0.17	0.14	<i>AMBRA1</i> , intronic
<b>rs7130141</b>	11p11.2	T/C	$6.87 \times 10^{-6}$	1.32	0.19	0.16	$6.47 \times 10^{-5}$	1.20	0.18	0.16	$6.96 \times 10^{-9}$	1.24	0.19	0.16	<i>AMBRA1</i> , intronic
<b>rs12574668</b>	11p11.2	A/C	$9.71 \times 10^{-6}$	1.31	0.19	0.15	$7.17 \times 10^{-5}$	1.20	0.18	0.16	$1.02 \times 10^{-8}$	1.24	0.19	0.16	<i>AMBRA1</i> , intronic
<b>rs4309482</b>	18q21.2	G/A	$3.40 \times 10^{-4}$	0.84	0.38	0.43	$2.93 \times 10^{-4}$	0.88	0.39	0.41	$9.68 \times 10^{-7}$	0.87	0.39	0.42	<i>CCDC68/TCF4</i> , intergenic
<b>rs6465845</b>	7q22.1	C/T	$1.14 \times 10^{-5}$	1.28	0.25	0.21	0.0064	1.11	0.23	0.21	$4.31 \times 10^{-6}$	1.17	0.24	0.21	<i>CUX1</i> , intronic
<b>rs370760</b>	7q22.1	G/A	$9.31 \times 10^{-5}$	1.26	0.22	0.18	0.0084	1.12	0.19	0.18	$2.65 \times 10^{-5}$	1.17	0.20	0.18	<i>CUX1</i> , intronic
<b>rs404523</b>	7q22.1	A/G	$8.19 \times 10^{-5}$	1.26	0.22	0.18	0.0119	1.11	0.19	0.18	$3.84 \times 10^{-5}$	1.17	0.20	0.18	<i>CUX1</i> , intronic
<b>rs2717001</b>	2p16.1	C/T	$3.20 \times 10^{-4}$	0.84	0.38	0.42	0.0174	0.93	0.39	0.41	$1.00 \times 10^{-4}$	0.89	0.39	0.42	<i>VRK2</i> , intronic

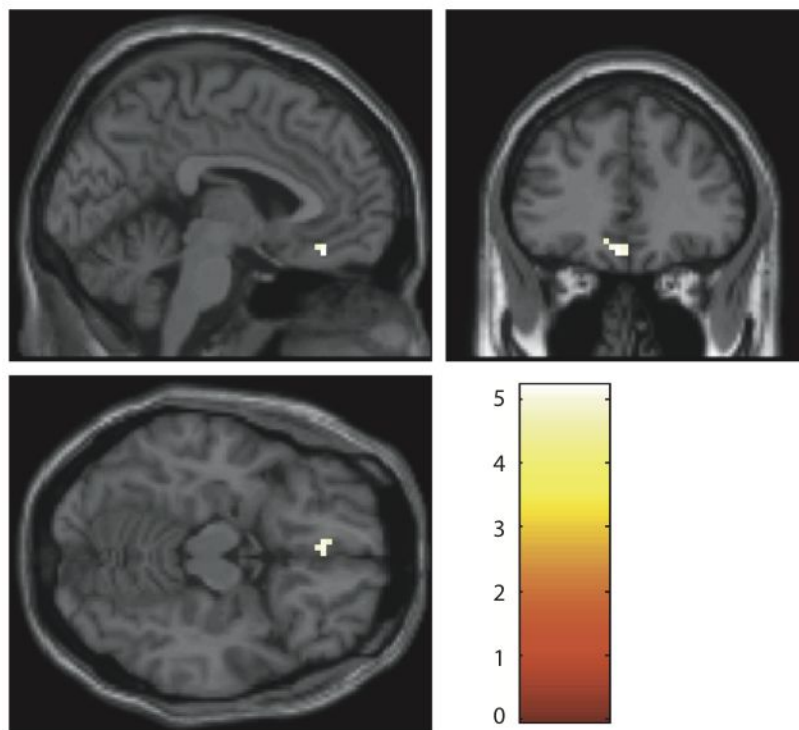
Alleles, major/minor allele where minor allele refers to dbSNP build129 and was determined in patients and controls in each analysis; CMH, Cochran-Mantel-Haenszel test; MAF, minor allele frequency; OR, odds ratio referring to minor allele; CMH was one-tailed for the replication analysis if OR was in the same direction as in the GWAS and two-tailed for the meta-analysis; K, CMH's cluster variable; The table is sorted according to the results of the follow-up analysis (Replication 1).

**Table 3:** Association results for rs11819869 at all stages of the analysis: GWAS, Replication 1, and Replication 2.

SNP	Sample (Patients / Controls)	% Males		Test, <i>P</i>	OR	MA	MAF	
		Pat	Con				Pat	Con
rs11819869	<b>GWAS (1169 / 3714)</b>			<b>CMH (K= 2), 4.71 x 10<sup>-6</sup></b>	<b>1.32</b>			
	Germany	50.1	51.0	TREND, 0.008	1.31	T	0.19	0.15
	The Netherlands	76.5	50.1	TREND, 1.85 x 10 <sup>-4</sup>	1.34	T	0.20	0.16
	<b>Replication 1 (2569 / 4088)</b>			<b>CMH (K= 4), 5.04 x 10<sup>-5</sup></b>	<b>1.20</b>			
	Germany (Bonn – Mannheim)	62.0	49.4	TREND, 0.012	1.24	T	0.18	0.15
	The Netherlands	69.7	41.3	TREND, 0.033	1.36	T	0.19	0.15
	Germany (Munich)	62.7	48.6	TREND, 0.038	1.15	T	0.17	0.15
	Denmark (Aarhus)	54.8	54.3	TREND, 0.016	1.20	T	0.20	0.17
	<b>GWAS + Replication 1 (3738, 7802)</b>			<b>CMH (K= 6), 3.89 x 10<sup>-9</sup></b>	<b>1.25</b>			
	<b>Replication 2 (4734/ 18472)</b>			<b>META (n= 15), 0.0029</b>	<b>1.11</b>			
	Denmark (Copenhagen)	58.6	58.1	LOGISTIC, 0.133	1.12	T	0.18	0.17
	England	76.3	54.5	LOGISTIC, 0.172	1.29	T	0.20	0.16
	Finland (Helsinki)	59.3	65.3	LOGISTIC, 0.256	1.26	T	0.13	0.11
	Finland (Kuusamo)	62.6	52.0	LOGISTIC, 0.423	<i>0.73</i>	T	0.08	0.11
	Iceland	64.5	49.9	LOGISTIC, 0.101	1.11	T	0.19	0.17
	Wales/ UK (Cardiff)	67.8	49.2	LOGISTIC, 0.052	1.16	T	0.19	0.17
	Italy	57.1	56.2	LOGISTIC, 0.784	<i>0.91</i>	T	0.18	0.19
	Scotland	72.2	58.1	LOGISTIC, 0.211	1.09	T	0.18	0.16
	Denmark (Aarhus)	53.7	35.7	LOGISTIC, 0.698	<i>0.94</i>	T	0.16	0.17
	Poland	46.9	51.6	LOGISTIC, 0.098	1.19	T	0.18	0.16
	Belgium	68.3	43.7	LOGISTIC, 0.317	1.10	T	0.17	0.16
	Hungary	43.6	41.6	LOGISTIC, 0.354	1.07	T	0.20	0.19
	Russia	27.8	38.0	LOGISTIC, 0.172	1.13	T	0.17	0.16
Sweden	62.7	62.0	LOGISTIC, 0.461	1.02	T	0.14	0.14	
Norway	59.2	50.4	LOGISTIC, 0.112	1.24	T	0.18	0.15	

CMH, Cochran-Mantel-Haenszel test, was one-tailed for Replication 1, and two-tailed for GWAS and the combined analysis of GWAS plus Replication 1; TREND, Cochran-Armitage test, was one-tailed when OR was in the same direction as in the GWAS for Replication 1 subsamples and two-tailed for GWAS subsamples; LOGISTIC, Logistic regression (additive effect) was one-tailed when OR was in the same direction as in the GWAS for Replication 2 subsamples; META, meta-analysis (random effects model) was two-tailed; OR, odds ratio referring to the minor allele (MA), *italic* when OR was in the opposite direction to GWAS (; MAF, MA frequency; Pat, patients; Con, controls.

**a****b****c**

**a****b**