



HAL
open science

From the western boundary currents to the Pacific Equatorial Undercurrent: Modeled pathways and water mass evolutions

Mélanie Grenier, Sophie Cravatte, Bruno Blanke, Christophe E. Menkès, Ariane Koch-Larrouy, Fabien Durand, Angélique Mélet, Catherine Jeandel

► To cite this version:

Mélanie Grenier, Sophie Cravatte, Bruno Blanke, Christophe E. Menkès, Ariane Koch-Larrouy, et al.. From the western boundary currents to the Pacific Equatorial Undercurrent: Modeled pathways and water mass evolutions. *Journal of Geophysical Research*, 2011, 116 (C12), pp.C12044. 10.1029/2011JC007477 . hal-00655768

HAL Id: hal-00655768

<https://hal.science/hal-00655768>

Submitted on 2 Jan 2012

HAL is a multi-disciplinary open access archive for the deposit and dissemination of scientific research documents, whether they are published or not. The documents may come from teaching and research institutions in France or abroad, or from public or private research centers.

L'archive ouverte pluridisciplinaire **HAL**, est destinée au dépôt et à la diffusion de documents scientifiques de niveau recherche, publiés ou non, émanant des établissements d'enseignement et de recherche français ou étrangers, des laboratoires publics ou privés.

From the western boundary currents to the Pacific Equatorial Undercurrent: Modeled pathways and water mass evolutions

Mélanie Grenier,¹ Sophie Cravatte,^{1,2} Bruno Blanke,³ Christophe Menkes,^{4,5}
Ariane Koch-Larrouy,^{1,2} Fabien Durand,^{1,6} Angélique Melet,⁷ and Catherine Jeandel^{1,8}

Received 29 July 2011; revised 21 October 2011; accepted 25 October 2011; published 30 December 2011.

[1] The hydrological and geochemical properties of the waters constituting the Pacific Equatorial Undercurrent (EUC) determine the properties of the equatorial cold tongue. Understanding and quantifying the various EUC origins is therefore of prime importance. For this purpose, a high-resolution ($1/4^\circ$) interannual oceanic simulation was analyzed from the western tropical Pacific boundaries to 140°W , using a Lagrangian framework. Waters from the Low-Latitude Western Boundary Currents (LLWBCs) transiting from Vitiaz Strait (the main contributor), from Solomon Strait, and via the Mindanao Current were identified as the principal sources to the EUC. Waters conveyed by the interior ocean off equator are negligible till 180°E . The LLWBCs' waters represent 87% of the EUC transport at 156°E out of which the New Guinea Coastal Undercurrent (NGCU) is as large as 47%. The EUC meridional distribution suggests that the waters originating from Solomon Strait and Mindanao Current mostly remain in the hemisphere from which they originate. Contrastingly, Vitiaz Strait waters are found in both hemispheres. The vertical EUC distribution shows that the lower layer of the EUC is mainly composed of Vitiaz Strait waters. Finally, the source transport distributions were characterized, at their origin and within the EUC, as a function of density. These distributions showed that waters flowing through Vitiaz Strait at densities higher than those of the EUC (down to $\sigma_\theta = 27.2 \text{ kg m}^{-3}$) undergo a diapycnal mixing and lighten during their journey to join the EUC. This lightening supports the suggestion that the NGCU is a major source for the EUC geochemical enrichment.

Citation: Grenier, M., S. Cravatte, B. Blanke, C. Menkes, A. Koch-Larrouy, F. Durand, A. Melet, and C. Jeandel (2011), From the western boundary currents to the Pacific Equatorial Undercurrent: Modeled pathways and water mass evolutions, *J. Geophys. Res.*, 116, C12044, doi:10.1029/2011JC007477.

1. Introduction

[2] Along the equatorial Pacific, the Equatorial Undercurrent (EUC) flows eastward as a powerful narrow tongue, salty and oxygenated, from north of Papua New Guinea (PNG) to the coast of South America [e.g., Johnson *et al.*, 2002]. The EUC is 500 km wide, centered on the 200 m depth in the western part of the basin, and then it gradually shoals along its 14,000 km pathway. It upwells in the eastern equatorial Pacific into the overlying South Equatorial

Current (SEC) and diverges from the equator. The EUC transports a variety of density horizons (approximately from 23 to 26.5 kg m^{-3}) and other properties [Tsuchiya *et al.*, 1989; Gouriou and Toole, 1993]. It is the main source of water masses upwelled in the equatorial cold tongue in the central eastern Pacific.

[3] In terms of biogeochemistry, the equatorial Pacific upwelling supports $\sim 20\%$ of the world's primary production [Chavez and Barber, 1987; Chavez and Toggweiler, 1995], but it is also a high-nutrient, low-chlorophyll (HNLC) region, a characterization arising from the relatively low-chlorophyll content compared to what would be expected from the high concentration of macronutrients. The consensus is that the region is limited by micronutrients, among which iron seems to be the main limitation [Martin *et al.*, 1994; Murray *et al.*, 1994; Gordon *et al.*, 1997; Landry *et al.*, 1997]. Although the EUC is possibly the main micronutrient conveyor to the equatorial Pacific, data are still lacking to completely characterize its role on the iron fluxes supporting primary production in the equatorial upwelling [Gordon *et al.*, 1997; Slemmons *et al.*, 2009, 2010].

[4] The transports of EUC water in the central eastern Pacific are known to be dependent on the EUC sources.

¹LEGOS, Université de Toulouse, UPS, OMP-PCA, Toulouse, France.

²LEGOS, IRD, Toulouse, France.

³Laboratoire de Physique des Océans, UMR 6523, CNRS/IFREMER/IRD/UBO, Université de Bretagne Occidentale, UFR Sciences, Brest, France.

⁴LOCEAN, UPMC/IRD/CNRS/MNHN, Université Pierre et Marie Curie, Paris, France.

⁵LOCEAN-IRD Nouméa, Nouméa, New Caledonia.

⁶LEGOS-IRD Nouméa, Nouméa, New Caledonia.

⁷LEGI, UMR 5519, CNRS, Université de Grenoble, Grenoble, France.

⁸LEGOS, CNRS, Toulouse, France.

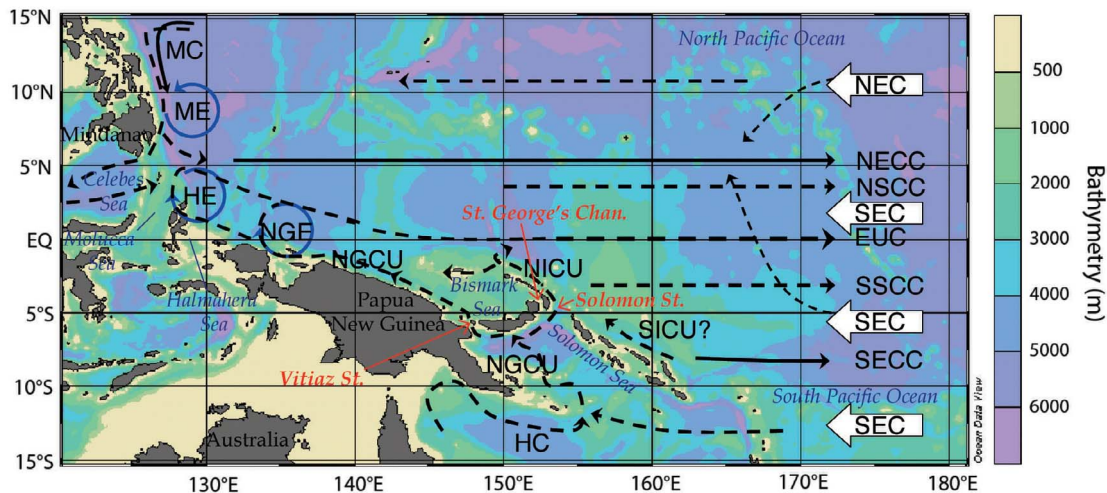


Figure 1. Schematic map of the major surface currents (solid arrows) and subsurface currents (dashed arrows) in the western tropical Pacific Ocean: westward North Equatorial Current (NEC) and South Equatorial Current (SEC); equatorward Mindanao Current (MC), New Guinea Coastal Undercurrent (NGCU), New Ireland Coastal Undercurrent (NICU), and Solomon Island Coastal Undercurrent (SICU); and eastward Hiri Current (HC), North and South Subsurface Countercurrents (NSCC and SSCC), North and South Equatorial Countercurrents (NECC and SECC), and Equatorial Undercurrent (EUC). The Mindanao Eddy (ME), the Halmahera Eddy (HE), and the New Guinea Eddy (NGE) are also shown. Vitiiaz and Solomon Straits and the St. George's Channel are identified in red.

Improving our knowledge about the EUC sources and their hydrological and geochemical properties is important for two reasons. First, water masses conveyed by this current are primary constituents of the equatorial thermocline waters and are therefore suspected to play a crucial role in climate variations and in modulation of the ENSO (El Niño Southern Oscillation) cycle. Indeed, on the one hand, it has been suggested that the EUC is advecting spiciness anomalies (density-compensating temperature and salinity anomalies) formerly subducted in the subtropics. These anomalies may eventually contribute to the decadal changes observed in the structure of the equatorial pycnocline and partly explain the observed decadal variability of ENSO [e.g., Schneider, 2004]. On the other hand, variations of EUC transport may lead to variations of nutrient supplies to the photic layer [Ryan *et al.*, 2006; Slemons *et al.*, 2009; Gorgues *et al.*, 2010], therefore modifying key elements of the food web such as the primary production of the HNLC area and involving climatic and economic (fisheries) consequences.

[5] The main pathways of the EUC water sources have been previously studied. As a summary, Figure 1 presents a schematic view of the circulation in the western tropical Pacific, building on Figure 1 from Fine *et al.* [1994] and Kashino *et al.* [2007] and Plate 2 from Schott *et al.* [2004]. EUC water sources are mainly subducted in the subtropics and advected by meridional convergence in the pycnocline following either an interior oceanic pathway [Johnson and McPhaden, 1999; Schott *et al.*, 2004] or the Low-Latitude Western Boundary Currents (LLWBCs) [Tsuchiya *et al.* 1989; Fine *et al.*, 1994]. The LLWBCs converge in the western equatorial Pacific, where the circulation is complicated (Figure 1). From the north, the Mindanao Current (MC) flows southward along the Philippine Islands [Wijffels *et al.*, 1995; Kashino *et al.*, 2007] and feeds the Indonesian

Throughflow, the North Equatorial Countercurrent (NECC) and the EUC [Fine *et al.*, 1994]. From the south, a double boundary current system flows through and east of the Solomon Sea [Melet *et al.*, 2010a; Cravatte *et al.*, 2011]. The main branch, the New Guinea Coastal Undercurrent (NGCU), flows northwestward along PNG, exiting the Solomon Sea through Vitiiaz Strait [Lindstrom *et al.*, 1987; Tsuchiya *et al.*, 1989; Ueki *et al.*, 2003]. The second branch, the New Ireland Coastal Undercurrent (NICU) flows along the eastern coast of New Ireland [Butt and Lindstrom, 1994; Melet *et al.*, 2010a]. It is fed by the current flowing through Solomon Strait, by the SEC and potentially by a western boundary current flowing along the Solomon Islands, the Solomon Island Coastal Undercurrent (SICU), described by Melet *et al.* [2010a]. These authors found that, climatologically, half of the NICU turns westward in the Bismarck Sea to join the NGCU, and half directly retroflects into the EUC. This retroflexion would be the most direct route for subtropical thermocline water on its way to the equator via the western boundary.

[6] More quantitatively, several model studies [Blanke and Raynaud, 1997; Rodgers *et al.*, 2003; Fukumori *et al.*, 2004; Goodman *et al.*, 2005] estimated that 2/3 of the EUC sources are located in the southern Pacific and 1/3 in the northern Pacific. Using climatological simulations, Blanke and Raynaud [1997] estimated that more than 60% of the southern supply flows along the southwestern boundaries. The global climate model used by Goodman *et al.* [2005] suggested that, seasonally, more than half of the Pacific EUC at 140°W originates south of the equator. These authors also concluded that LLWBCs were major contributors to the EUC flow, transporting 3/4 of the EUC waters. In contrast, Izumo *et al.* [2002] found a more balanced contribution from both hemispheres, when modeling

the sources of the EUC outcropping water during the rapid transition between El Niño and La Niña events, in May 1998.

[7] Several questions remain concerning the EUC sources. Most of the previous numerical studies defined the southern LLWBCs as a broad region west of 160°E, without distinguishing the NGCU from the NICU. Differentiating these routes may be important for the EUC in several ways. First, the longitude at which waters join the EUC, as well as their transit time, may change depending on the sources with potential repercussions on the rapidity of the equatorial response to changes in the southwest Pacific circulation. Also, whether waters transit or not through the Solomon Sea is important for the definition of the equatorial water mass geochemical properties. Indeed, the PNG coast has been hypothesized to be the primary source of micronutrients for the deeper layers of the EUC [Mackey *et al.*, 2002]. Lacan and Jeandel [2001] suggested that NGCU waters were enriched in lithogenic inputs by dissolution of continental material as they flowed along the PNG slope. This hypothesis was confirmed by Slemons *et al.* [2010, also Particulate iron, aluminium and manganese in the Pacific equatorial undercurrent and low latitude western boundary current sources, submitted to *Marine Chemistry*, 2011], who showed high concentrations of total dissolvable iron and particulate iron in the western equatorial Pacific, decreasing eastward but persisting to 140°W in the lower EUC. Hence, understanding the role and routes of the respective sources of the EUC waters is of crucial importance in understanding the concentrations of micro and macronutrients supporting primary production in the eastern Pacific.

[8] Surprisingly enough, little is known about (1) the distribution of these hydrographic sources within the EUC, (2) the evolution of this distribution from the western to the central equatorial Pacific, and (3) the densities of the sources feeding the EUC. While some hypotheses have been made on the basis of water mass hydrological properties [e.g., Tsuchiya *et al.*, 1989], the lack of observational data over a long time range prevents precise determination of the above mentioned processes. In order to circumvent that problem, realistic numerical modeling seems a particularly useful tool for studying the various sources of the EUC.

[9] This study will specifically address the following questions: how do the northern and southern hemisphere sources organize to shape the EUC waters along its path to the eastern Pacific? Which density layers are conveyed from each source within the EUC? Our results will help improve our characterization of the biogeochemical supply toward the eastern equatorial upwelling region.

[10] The present study focuses on the sources of the EUC along its pathway from 156°E to 140°W, using a 1/4° resolution Ocean General Circulation Model (OGCM) and a quantitative Lagrangian analysis. The absolute and relative contributions of the various sources composing the EUC were investigated in order to improve our knowledge about the fate of the water masses conveyed by the LLWBCs that potentially carry an important part of the nutrients to the HNLC area.

[11] Section 2 describes the numerical tools used in this study. The EUC sources and related transports from 156°E to 140°W are presented in section 3 as well as the distribution of the various sources within the EUC at 165°E.

Section 4 focuses on the water density characterization of the EUC sources downstream and within the EUC at 165°E. We discuss the results and conclusions in section 5.

2. Methodology

2.1. The OGCM

2.1.1. Description

[12] We used the global interannual reference simulation (47 years, from 1958 to 2004) of the DRAKKAR project, referred to as “ORCA025-G70” [Barnier *et al.*, 2006]. The model had a 0.25° eddy-permitting horizontal resolution. The vertical grid had 46 levels, with a resolution ranging from 6 m near the surface to 250 m at 5750 m. The depth of the bottom cell was variable (the so-called “partial-step”) and was adjusted to match the true depth of the ocean for a better representation of small topographic slopes. The diffusion of tracers was performed along isopycnal surfaces through a Laplacian operator while dissipation of momentum was performed along geopotential surfaces using a biharmonic operator. The horizontal eddy viscosity and diffusivity coefficients were $300 \text{ m}^2 \text{ s}^{-1}$ and $-1.5 \cdot 10^{11} \text{ m}^4 \text{ s}^{-2}$ at the equator, respectively. They decreased poleward proportionally to the size and the cubic size of the model grid cells, respectively. The vertical eddy viscosity and diffusivity coefficients were computed from a 1.5-order turbulent closure scheme based on a prognostic equation for the turbulent kinetic energy (TKE) [Blanke and Delecluse, 1993] and a diagnostic equation for the dissipation and mixing turbulent length scales.

[13] Surface wind stresses and heat fluxes were computed from the CORE bulk formulae [Large and Yeager, 2004], which used data from ERA40 [Uppala *et al.*, 2005] for years 1958 to 2001, and ECMWF analysis for years 2002–2004. The change in 2002 resulted in a spurious adjustment of the upper ocean especially in the tropics [Molines *et al.*, 2006]. To avoid this problem in our study, we limited our analysis to the end of 2001. The initial conditions for temperature and salinity were derived from Levitus *et al.*'s [1998] climatological data set for midlatitudes and low latitudes. Model outputs consisted of 5 day means. Note that with this spatial resolution, the St. George's Channel in the Bismarck Archipelago was closed and Vitiaz Strait was 630 m deep and 55 km wide at the surface. The ORCA025-G70 simulation has been widely used (<http://www.drakkar-ocean.eu/>) and we refer the reader to Molines *et al.* [2006] for more details on the simulation.

2.1.2. Validation

[14] The realism of our simulation was first assessed by comparing the simulated currents to observations. Along the PNG coast, current observations were available from a mooring deployed during a 5 year period from 1995 to 2000 [Ueki *et al.*, 2003]. At the equator, zonal current observations were available from the TAO-TRITON array [Hayes *et al.*, 1991; McPhaden, 1988]. At some equatorial sites (147°E, 156°E, 165°E, 170°W, 140°W and 110°W), acoustic Doppler current profilers (ADCP) and/or mechanical current meters were deployed and measured ocean currents down to 300 m. Owing to instrumental failure, the time series have missing values at some times and depths. For the purpose of comparison with the model outputs, the daily current observations were averaged into 5 day bins, and the

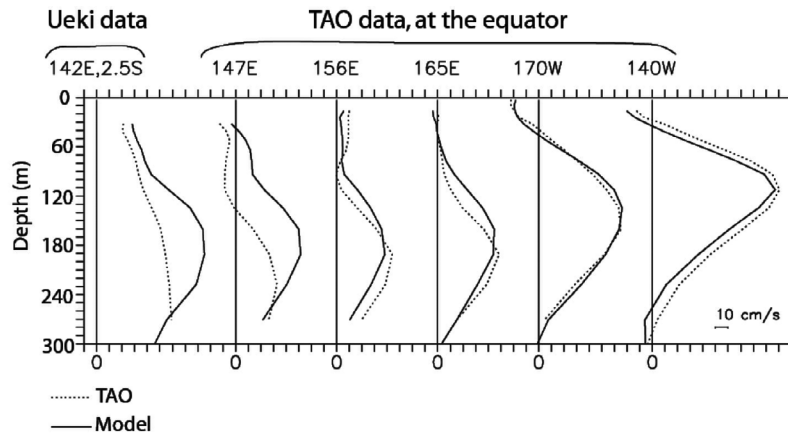


Figure 2. Dotted lines represent mean vertical profile of current speed from *Ueki et al.* [2003] data (142°E – 2.5°S , along the New Guinea coast) and mean vertical profiles of zonal velocity for Tropical Atmosphere Ocean (TAO) data (147°E , 156°E , 165°E , 170°W , and 140°W , at the equator), compared with equivalent information from the model (solid lines). One graduation along the horizontal axis is 10 cm s^{-1} .

simulated zonal currents were extracted from the model at the Tropical Atmosphere Ocean (TAO) mooring locations at every date for which observed data were available during the 1990–2001 period.

[15] Figure 2 shows the resulting mean vertical profiles for observed and simulated zonal currents at 147°E , 156°E , 165°E , 170°W , and 140°W , showing the EUC structure. It also shows the mean observed and simulated horizontal velocity magnitude at 142°E – 2.5°S (PNG mooring). Currents simulated by the model showed an excellent agreement with data at 170°W and 140°W . They are also well reproduced at 156°E and 165°E , with a fair simulation of the EUC mean velocity core, although the core was slightly deeper in the observations. Contrastingly, mean zonal currents were not well simulated at 147°E – 0°N . At this location, the modeled EUC was much stronger and its core was much

shallower than observed. The cause and implications of this discrepancy will be discussed later. At 142°E – 2.5°S , the NGCU core was poorly simulated. However, a small shift in the core of the NGCU relative to the model bathymetry or mooring position could explain large differences in current strength.

[16] Meridional sections of shipboard ADCP (SADCP) mean zonal velocity [*Johnson et al.*, 2002] were compared with the simulated mean zonal velocity at 165°E and 140°W in Figure 3. Data were taken mostly in the 1990s and correspond to 172 synoptic meridional CTD/ADCP sections in the tropical Pacific [*Johnson et al.*, 2002]. For both sections, mean isopycnals (data from *Johnson et al.* [2002]) were also plotted. At 165°E , both observed and simulated EUC cores were located between $\sigma_{\theta} = 25 \text{ kg m}^{-3}$ and $\sigma_{\theta} = 25.8 \text{ kg m}^{-3}$. The transition from the EUC to the underlying Equatorial

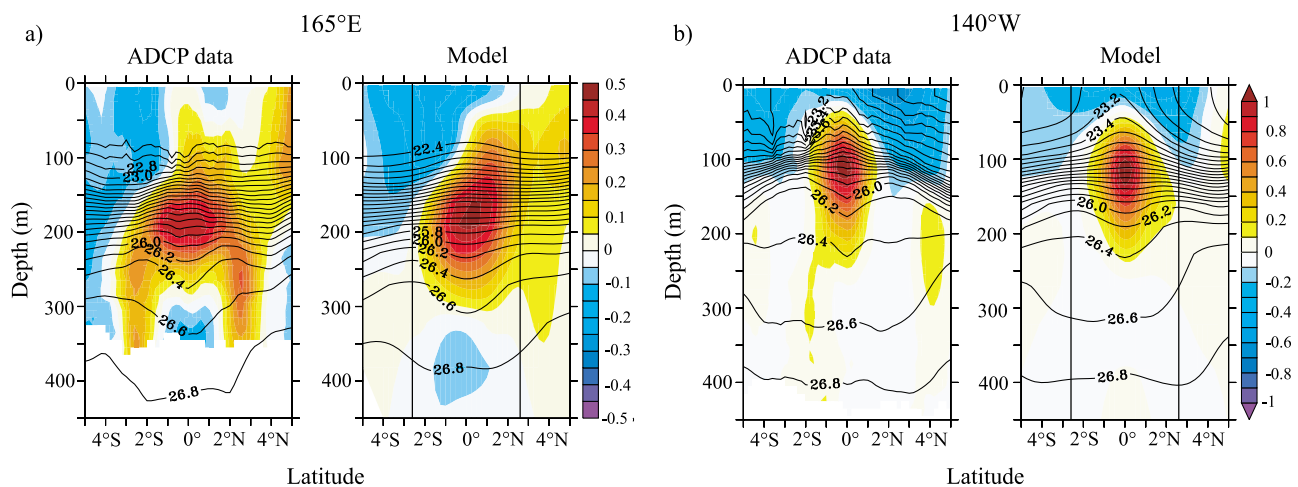


Figure 3. Meridional sections of mean zonal velocity expressed in m s^{-1} at (a) 165°E and (b) 140°W . At both longitudes, *Johnson et al.* [2002] data (ADCP data) are compared to the OGCM velocity averaged over the 1970–2001 period (Model). Isopycnals are superimposed in black with a 0.2 kg m^{-3} contour interval. The dashed isopycnal refers to $\sigma_{\theta} = 25.0 \text{ kg m}^{-3}$. The two black vertical lines show the latitude range that bounds our definition of the EUC (see section 3.1).

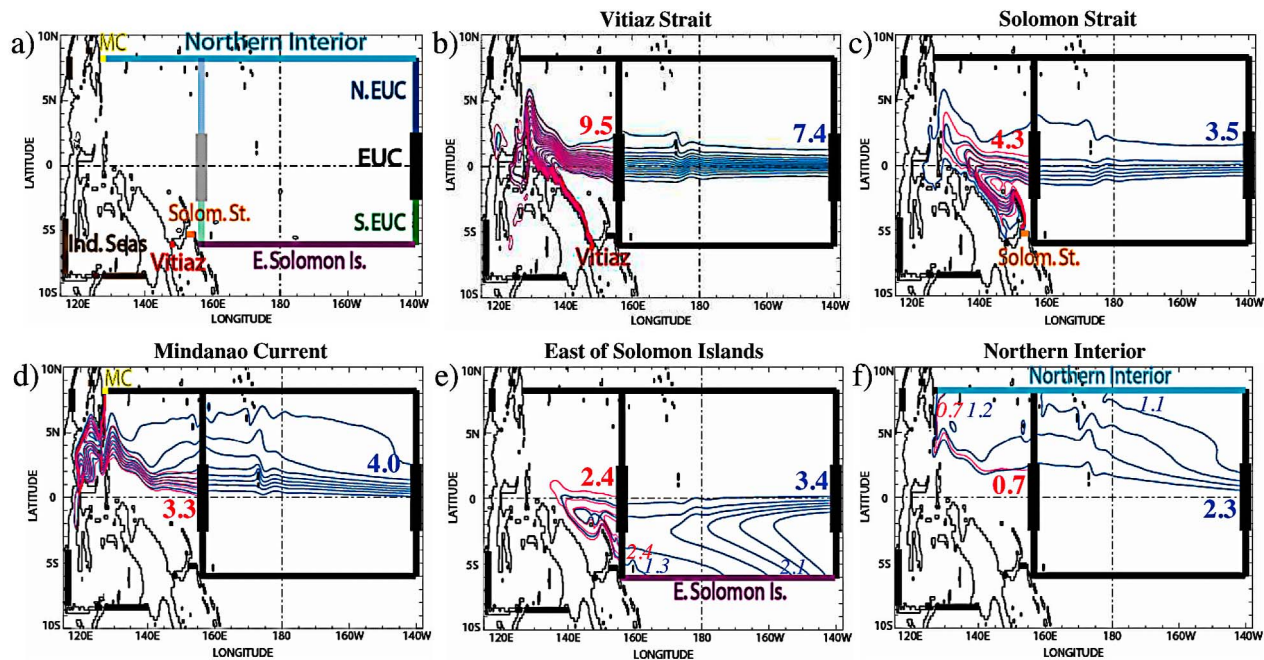


Figure 4. (a) Control sections used in the Lagrangian backward experiment started at 140°W . The translucent sections show the eastern limits for the experiment started at 156°E , with other sections unchanged. The domain of integration is bounded by eight interception sections (in color) and an injection section (across the EUC, in black) that also acts as an interception section over its whole extent. The Lagrangian stream function of the mass transfer, associated with each source and integrated both in time and depth, is shown with a 0.5 Sv contour interval as thin pink lines and thick blue lines for the EUC studied at 156°E and at 140°W , respectively, for waters originating from (b) Vitiaz Strait, (c) Solomon Strait, (d) Mindanao Current, (e) east of Solomon Islands, and (f) northern interior Pacific Ocean. The transport value of each source is reported close to the EUC section, at 156°E and 140°W , in bold pink and bold blue, respectively (in Sv). The transport values in italic detail, for sections representing interior ocean sources, the part that eventually flows along the boundaries and the part that flows through interior pathways (in Sv).

Intermediate Current (EIC) was slightly too deep in the model. The main discrepancy concerns the observed well developed Subsurface Countercurrents (SCCs), also called Tsuchiya Jets, between 200 m and 350 m depth at 3°N and 3°S , which would require higher vertical resolution and smaller viscosity in the model for appropriate representation [Marin et al., 2000; Stockdale et al., 1998]. In the central Pacific, at 140°W , the width, depth, current intensity, and density ranges of the EUC were in very good agreement with observations and the SEC was also realistically reproduced in the model.

[17] To conclude, the location and intensity of the mean modeled LLWBCs and EUC (especially east of 147°E) were correctly simulated. The transports and locations of the western boundary currents in Vitiaz Strait, Solomon Strait, and along the Mindanao coast (not shown) were also consistent with previous observations and transport estimates [Cravatte et al., 2011; Wijffels et al., 1995; Dutrieux et al., 2008]. These model performances allowed us to analyze water pathways and transports between the LLWBCs and the EUC with some confidence in the robustness of our results. The implications of our findings of the discrepancies between the modeled and observed currents will be discussed in section 5.

2.2. The ARIANE Lagrangian Tool

[18] ARIANE is an off-line diagnostic tool dedicated to the computation of 3D streamlines in a given velocity field (as the output of an OGCM) and subsequent water masses analyzes on the basis of multiple particle trajectories [Blanke and Raynaud, 1997; Blanke et al., 1999]. In this study, we used 5 day average outputs of the zonal and meridional velocity fields as well as salinity (S) and temperature (T) fields. The temporal integration of these fields allows tracing of the average origin (backward integration) or fate (forward integration) of selected water masses. Here, the average behavior was determined thanks to the injection of particles over a long period (20 years) that integrated the interannual variability present in the simulated data. Turbulent diffusion processes were not used to calculate the trajectories, as particles are only advected by the modeled velocity. Instead, effects of turbulent mixing on the followed water masses were provided implicitly by the along-trajectory changes in tracer properties (T and S).

[19] Using the ORCA025-G70 “C” grid [see Arakawa, 1972] we defined several segments that form, with the land grid cells, a closed oceanic domain. One of these segments was used as the injection segment, where particles were seeded at each time step for the grid cells where the

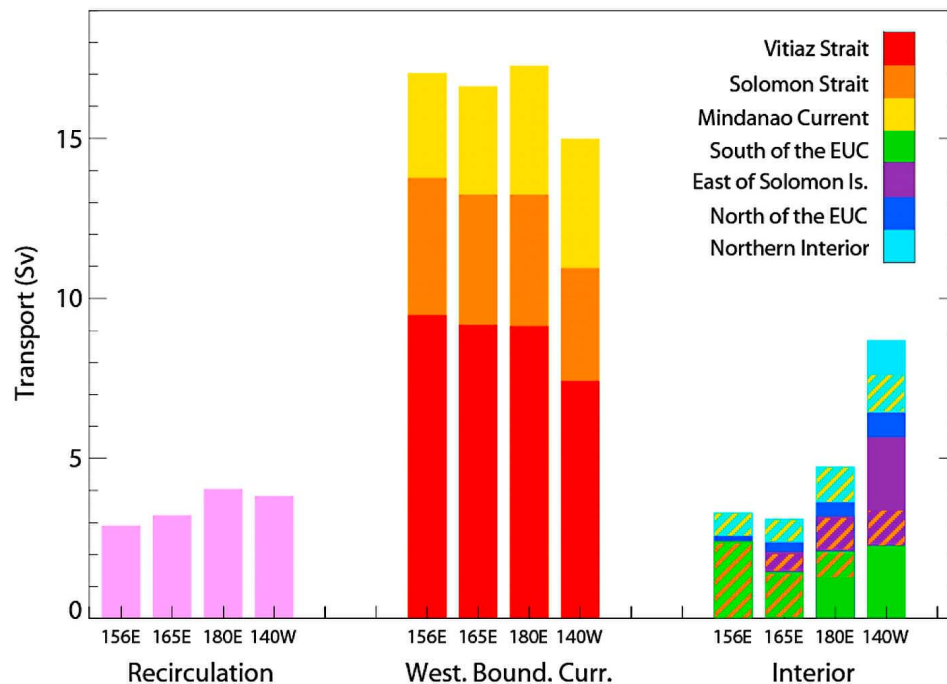


Figure 5. Contribution (in Sv) of the different sources to the EUC transport considered at 156°E, 165°E, 180°E, and 140°W. “West. Bound. Curr.” means Western Boundary Currents and includes the origins Vitiaz Strait (red bars), Solomon Strait (orange), and Mindanao Current (yellow). The “Interior Ocean” contributions, i.e., south of the EUC (green bars), east of the Solomon Islands (purple), north of the EUC (blue), and Northern Interior (cyan), are shown in the bottom right-hand corner. The recirculation, defined at the end of section 2, is shown in the bottom left-hand corner. The orange-hatched shading specifies the fraction of the sources that is eventually conveyed by the NICU and that must be added to the Solomon Strait contribution for the full estimation of the NICU source. In a similar way, the yellow-hatched shading specifies the fraction of the sources that contributes ultimately to the Mindanao Current transport.

transverse velocity was inward the domain (i.e., these particles will enter the domain the following time step). Other segments were “interception” segments (see Figure 4a for the segment locations and details). For a backward integration from the injection section, they represented the locations of the diverse origins of the followed water masses. Following *Blanke et al.* [1999], each seeded particle was bearing an infinitesimal transport and the sum of all the transports amounts to the available inflow. Owing to water incompressibility, a given particle conserves its infinitesimal mass along its trajectory. A water mass can be defined by a set of particles that match selected position, velocity or density criterion. Thus, this mass-preserving method allows quantifying the transport of a given water mass, adding up the elementary transports of the particles that compose it. Note that the segment where particles were injected also acts as an interception section over its whole extent. It was used to quantify the water flowing initially westward in the SEC or in the EIC, and joining the EUC afterward. This zonal sea-saw motion is referred to as recirculation (see Figure 5).

3. Pathways of the EUC Sources

3.1. Experiments

[20] The main difficulty in estimating the transport of the EUC is definitional: there are several eastward currents close

to the EUC (Figures 1 and 3), and it is somewhat arbitrary to define the boundaries between the EUC, the North Equatorial Countercurrent (NECC) to the north, the SCCs on both flanks and the Equatorial Intermediate Current (EIC) below. In this study, we defined the EUC as the eastward flow greater than 0.1 m s^{-1} , in the latitude band from 2.625°N to 2.625°S and in the density range from 22.4 kg m^{-3} to 26.8 kg m^{-3} (Figure 3). The shallower limit in density was chosen to distinguish the EUC flow from the eastward surface jets occasionally generated by westerly winds. The deeper limit in density was chosen to avoid inclusion of waters from the westward EIC that reverses seasonally [*Marin et al.*, 2010]. A stronger constraint for the magnitude of the zonal velocity, added to a density definition, results in a loss of waters at the edge of the EUC. On the contrary, we would get some intrusions from the NECC or from the EIC within our EUC definition if only the sign of the velocity was imposed.

[21] Four experiments were performed, in which particles were injected into the EUC at 156°E, 165°E, 180°, and 140°W, respectively, and integrated backward in time until they reach one of the 8 source sections defined in Figure 4 and Table 1. Particles were injected from the end of 2001 to the beginning of 1982 (i.e., for 20 years), and followed backward for 11 years. These time ranges were chosen to have a long enough temporal integration so that a maximum

Table 1. Coordinates of the Sections Delimiting Our Domain

Sections	Longitude	Latitude
EUC (recirculation)	155.6°E or 164.9°E or 179.9°E or 140.1°W	2.624°N–2.624°S
Vitiaz Strait	147.4°E–148.9°E	5.865°S
Solomon Strait	152.1°E–154.6°E	5.118°S
Indonesian Seas	124.4°E–126.4°E, 127.1°E–140.4°E, 116.4°E, 117.6°E, 119.9°E–122.9°E, 123.1°E	8.345°S, 8.345°S, 8.345°S–3.872°S, 6.610°N–8.345°N, 10.32°N, 8.593°N–9.087°N
Mindanao Current	126.4°E–127.4°E	8.098°N
East of Solomon Islands	155.4°E–164.9°E or 155.4°E–179.9°E or 155.4°E–140.1°W	5.865°S
Northern Interior	127.4°E–155.6°E or 127.4°E–164.9°E or 127.4°E–179.9°E or 127.4°E–140.1°W	8.098°N
South of the EUC	155.6°E or 164.9°E or 179.9°E or 140.1°W	5.865°S–2.624°S
North of the EUC	155.6°E or 164.9°E or 179.9°E or 140.1°W	2.624°N–8.098°N

of fluid particles exited the closed domain by one of the eight sections (see eleventh row in Table 2). The vertically integrated and time averaged stream functions obtained separately for each source are shown for 156°E and 140°W in Figure 4. The transport values of each EUC source are summarized for the four experiments in Table 2 and displayed in Figure 5.

3.2. EUC Sources at 156°E

[22] A large majority of the EUC waters considered at 156°E passes first through the LLWBCs (87%, among which 13% originate from interior sections and flow ultimately via the LLWBCs, as specified by the yellow and orange hatches in Figure 5), whereas 12% originate from east of 156°E, conveyed by westward currents, and recirculate within the EUC (Figure 5 and Table 2). The LLWBCs contribution comes mostly from the south. 40% of the EUC

waters flow through Vitiaz Strait, within the NGCU, and 28% flow east of New Ireland within the NICU. The NICU is mainly fed by the flow exiting through Solomon Strait (4.3 Sv, 18% of the EUC waters), and directly by the SEC (2.4 Sv, 10% of the EUC waters). Thus, in our model, 58% of the EUC waters at 156°E pass first through the Solomon Sea. Only 18% of the EUC waters originate from the Mindanao Current.

[23] The pathways of the waters composing the EUC at 156°E are shown in Figure 4 (pink lines). They are quite complex. The flow originating from Vitiaz Strait (Figure 4b) overshoots the equator and splits into three different branches before retroflecting into the EUC.

[24] 1. The westernmost flow (~ 1.5 – 2 Sv) retroflects southwestward into the Halmahera Sea (Figure 1), turns around the Halmahera coast, and recirculates into the Halmahera Eddy (HE) to reach the EUC. Its associated transport is well preserved, in absolute contribution, all along its eastward transport within the EUC. Such a pathway was already suggested by observations from *Gordon and Fine* [1996, Figure 1] and from *Hautala et al.* [1996] and was simulated in the BRAN model [Schiller et al., 2008].

[25] 2. The central flow (~ 3.5 Sv at 156°E) directly recirculates in the Halmahera Eddy (HE) after crossing the equator and reaches the EUC. This pathway is also consistent with former observations [e.g., *Kashino et al.*, 1996] that reported intrusions of southern hemisphere saline waters as far north as 5°–6°N.

[26] 3. Finally, the main branch originating from Vitiaz Strait and feeding the EUC, i.e., the easternmost one (~ 4 Sv at 156°E), retroflects into the EUC north of the equator via the New Guinea Eddy (Figure 1) without recirculating in the HE.

[27] The NICU waters (Figures 4c and 4e) are mostly advected westward toward the PNG coast before reaching the EUC. The whole flow through Solomon Strait (Figure 4c) is advected southwestward into the Bismarck Sea before being conveyed northwestward by the NGCU. Then, these Solomon Strait–originating waters follow the same pathway as the Vitiaz Strait water masses described above. The major part of the SEC vein joining the NICU

Table 2. Summary of the Source Transports Feeding the 156°E EUC, the 165°E EUC, the 180°E EUC, and the 140°W EUC^a

Sections	156°E-EUC		165°E-EUC		180°E-EUC		140°W-EUC	
	Sv	%	Sv	%	Sv	%	Sv	%
EUC (recirculation)	2.9	12	3.2	14	4.0	15	3.8	14
Vitiaz Strait	9.5*	41	9.2*	40	9.1*	35	7.4*	26
Solomon Strait	4.3*	18	4.1*	18	4.1*	16	3.5*	13
Indonesian Seas	0.1*	0	0.1*	0	0.1*	0	0.1*	0
Mindanao Current	3.3*	14	3.4*	15	4.0*	15	4.0*	14
East of Solomon Islands	-	-	0.6 (0.6*)	3 (3)	1.1 (1.1*)	4 (4)	3.4 (1.3*)	12 (5)
South of the EUC	2.4 (2.4*)	10	1.5 (1.5*)	6 (6)	2.1 (0.8*)	8 (3)	2.3	8
Northern Interior	0.7 (0.7*)	3 (3)	0.7 (0.6*)	3 (3)	1.1 (1.0*)	4 (4)	2.3 (1.2*)	8 (4)
North of the EUC	0.2	1	0.3	1	0.3	2	0.8	3
Surface	0.0	0	0.0	0	0.0	0	0.0	0
Temporal interception	0.1	0	0.1	0	0.2	1	0.5	2
Total	23.4	100	23.1	100	26.3	1000	28.0	100
LLWBCs	20.3*	87	19.5*	84	20.5*	78	17.5*	63
Interior pathways	0.2	1	0.4	2	1.8	7	6.3	23

^aTransports on the left are in sverdrups, and those on the right are in percent. Numbers in parentheses show the fraction of transport that transits ultimately through the NICU and the Mindanao Current. The “temporal interception” criterion corresponds to transport that did not reach any section before the end of the temporal integration. Asterisks refer to transport conveyed by the LLWBCs; the total of this transport is given in the thirteenth row. Contribution of Interior Ocean off the equator is given in the fourteenth row.

along the New Ireland coast (2 Sv out of 2.4 Sv) follows about the same pathway as the flow exiting from Solomon Strait (Figure 4e). The remaining 0.4 Sv retroflects into the EUC north of New Ireland. This pattern differs from the results of P. Dutrieux et al. (Direct measurements of intermediate and upper ocean currents in the western tropical Pacific, manuscript in preparation, 2011) and Melet et al. [2010a]. Indeed, the latter study estimates that 3/5 of the NICU directly retroflects in the EUC north of New Ireland. Here, less than 10% of the NICU waters follow this pathway.

[28] The thermocline waters that feed the EUC from the Mindanao Current (Figures 4d and 4f) mainly flow within the Celebes Sea, feeding the Indonesian Throughflow, before bifurcating toward the EUC through the northern part of the HE toward the EUC. This is fully consistent with previous observations [Fine et al., 1994; Kashino et al., 1996; Lukas et al., 1996].

[29] The travel time of water masses from their sources to the EUC at 156°E varies between one and two years depending on their route. Half of the particles conveyed by the southern LLWBCs reach the EUC at 156°E in about 15–16 months. Most of the waters originating in Vitiaz Strait travel in around 9 months. For the NICU origin, waters reach the EUC in about either 4 months or 1 year. The 4 month route corresponds to NICU water masses retroflecting into the EUC north of New Ireland: this is the fastest and shortest western boundary route to the EUC of our study. The 1 year path corresponds to the NICU route via the NGCU. Mindanao Current water masses have a longer travel time than the southern hemisphere sources. Half of the particles reach the EUC at 156°E after 2 years of transit.

[30] The EUC recirculation represents the transport that flows back to the initial section, being converted or not into another hydrological class than the one defined at the injection. Whereas the injection over the EUC at 165°E is controlled by density and velocity criteria, the whole vertical plan at 165°E, from 2.625°N to 2.625°S and from the surface to the ocean bottom, becomes an interception section for the particles integrated backward in time. The recirculation around 165°E is associated with waters flowing initially westward at 165°E in the SEC or in the EIC, and joining the EUC later. Half of particles recirculating between the SEC and the EUC remain during a year within the domain of integration. The particles participating in the lower recirculation, between the EIC and the EUC, have a longer median age, equal to one and a half year.

3.3. From 156°E to 140°W: Evolution of the Transports of the EUC Sources

[31] The source contributions of the EUC, taken at different longitudes, are represented in Figure 5. This allows following the evolution of the relative importance of the EUC sources along the equator, from its origin in the western Pacific to 140°W. One must be attentive here about the distinction between “Western Boundary Currents” versus “Interior Ocean.” Indeed, “Interior Ocean” refers to sections located in the open ocean. However, a part of the southern “Interior Ocean” transport converges toward the New Ireland coast and is conveyed ultimately by the NICU (orange hatched portions in Figure 5). Consequently, this transport

should be added to the Solomon Strait transport for the estimation of NICU supplies. A similar remark applies for the yellow-hatched portion of the northern interior transport that flows within the MC (Figure 5).

3.3.1. Evolution of the Interior Pathways' Contributions to the EUC

[32] At 156°E and 165°E, almost all the waters that compose the EUC passed first through the LLWBCs (Figure 5). As expected, contributions from interior oceanic pathways increase progressively from 156°E to 140°W, and become significant only east of 180°. At 140°W, 32% of the EUC sources originate from interior sections among which 23% follow interior pathways all along their route (see non-hatched interior fraction in Figure 5 and Table 2). Interior southern supplies are larger than their northern counterpart. This hemispheric difference is likely due to the existence of a high potential vorticity ridge in the North Pacific, located under the Intertropical Convergence Zone, which limits the connection between the Northern Interior Pacific Ocean and the equator [e.g., Liu et al., 1994; Lu and McCreary, 1995; Johnson and McPhaden, 1999; Fukumori et al., 2004].

3.3.2. Evolution of the Western Boundary Contributions

[33] Interestingly, the Mindanao Current contribution increases between 156°E and 140°W (Figure 5 and Table 2). However, only 50% of the MC-originating waters flowing within the EUC at 140°W flow already in the EUC at 156°E. The other 50% are first conveyed eastward by the NECC, converging progressively toward the equator after 175°E, before they eventually enter the EUC (Figures 4d and 4f). This is in agreement with the results of Johnson and McPhaden [1999].

[34] Surprisingly, the Vitiaz Strait contribution to the EUC transport decreases from 9.5 Sv to 7.4 Sv between 156°E and 140°W, meaning that 2.1 Sv of Vitiaz Strait-originating waters exit the EUC during its eastward advection from 156°E to 140°W. More generally, a decrease of 20% of the southern LLWBCs supplies is observed between 156°E and 140°W, partly compensated by MC supplies. Actually, about 1/3 of the EUC waters coming from each western boundary section at 156°E does not reach 140°W.

[35] Forward Lagrangian experiments were performed for each of the LLWBCs' sources to identify where and how these waters are leaking from the EUC between 156°E and 140°W. We isolated the waters that feed the 156°E EUC from each LLWBCs' section, and advected them from 156°E to 140°W (not shown). The major part of the LLWBCs' waters present within the EUC at 156°E but not anymore at 140°W exit the EUC through the lateral limits at 2.625°N and 2.625°S. 40% of the transport losses of the Vitiaz Strait source leak out at the northern EUC boundary, 30% at the southern one, and 20% recirculates in the SEC or the EIC. This spatial distribution of Vitiaz Strait losses is coherent with the fact that a larger part of this source crosses the equator north of PNG and transits within the EUC in its northern part. 76% of MC source transport losses leak out of the EUC to the north whereas 56% of the loss of NICU source transport leaks out to the south, suggesting a greater return of the northern sources to their own hemisphere. These lateral losses mainly result from equatorial divergence of the waters located above the EUC core.

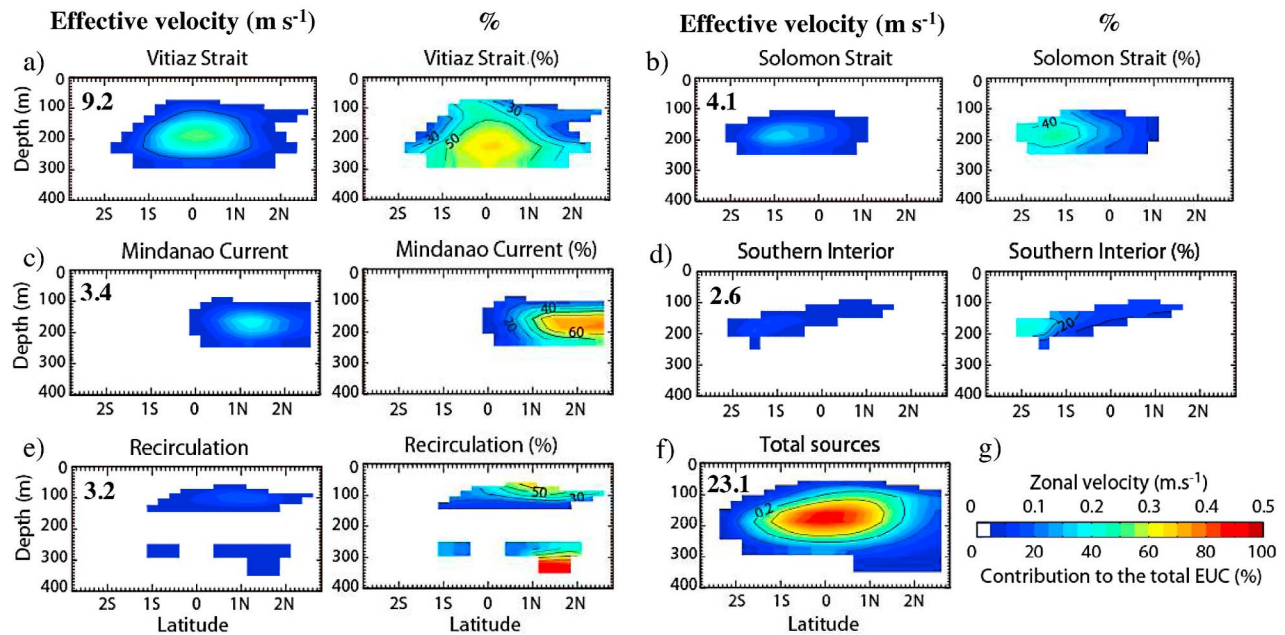


Figure 6. Contribution of the major sources to the EUC zonal velocity profile at 165°E , expressed either as an “effective velocity” (left graphs, in m s^{-1}) or as a fraction of the local EUC velocity (right graphs, in percent): (a) Vitiaz Strait, (b) Solomon Strait, (c) Mindanao Current, (d) Southern Interior (east of Solomon Islands + south of the EUC), and (e) recirculation. Regions where the velocity is less than 0.025 m s^{-1} are blanked out. The “effective velocity” is obtained by the remapping on the injection section of the infinitesimal transports carried by particles with a specific origin. (f) The sum of the individual velocity components provides the mean EUC zonal velocity profile. (g) Explanation of the color bar. The associated transport is reported (in Sv) on the top left corner of the total EUC and of the “effective velocity” of each source.

3.4. Structure of the EUC at 165°E as a Function of Its Origins

[36] The effective velocity (m s^{-1}) contributions of the various sources of the EUC at 165°E are shown as a function of latitude and depth in Figure 6. For each source, a complementary graph shows its contribution as a percentage of the EUC transport.

[37] Interestingly, the water masses originating from the MC or Solomon Strait are confined to their respective hemispheres (Figures 6b and 6c), whereas the waters originating from the NGCU spread almost uniformly within the EUC (Figure 6a). More precisely, the EUC water masses flowing from the NGCU are characterized by a core centered on 190 m and extending from 110 m to 260 m. They represent more than 60% of the total EUC transport between 0.5°S and 1°N , between 180 m and 280 m depth. Thus, these waters constitute the major contribution to the EUC waters, especially at the equator and below 200 m.

[38] At 165°E , Solomon Strait waters feeding the EUC are centered on 0.9°S and 190 m depth where they represent more than 40% of the total EUC transport (Figure 6b). They extend from 2°S to 1°N and are the major component of the southern part of the EUC, between 100 m and 250 m depth. Waters from the SEC joining the NICU (Southern Interior section, Figure 6d) feed a small part of the 165°E EUC, with a core centered on 180 m, between 2°S and 0.5°S . They are even more confined in the southern EUC part than Solomon Strait–originating waters.

[39] The Mindanao Current water core is centered on 1.2°N , at 170 m depth (Figure 6c). This source extends from 0.2°S to the northern EUC boundary. It contributes to more than 50% of the total 165°E -EUC transport, between 150 and 200 m depth, from the northern EUC boundary to 1°N . Thus, MC waters are the main component of the northern EUC.

[40] Finally, a large part of the EUC transports at 165°E above 100 m depth or below 280–300 m depth consist of recirculating waters. Thus, the upper and lower depth limits of the EUC are mainly fed by the waters conveyed by the surrounding westward flowing currents such as the SEC or the EIC.

[41] Interestingly, these model results confirm the findings of Tsuchiya *et al.* [1989] based on water mass hydrological properties observed during WEPOCS cruises. Indeed, these authors suggested that the major source of the EUC is Coral Sea water transported by the NGCU. They also suggested that at 143°E , between 0.5°N and 2°N , the northern portion of the EUC contains northern hemisphere waters. Downstream, at 155°E , their observations suggested that the southern portion of the EUC contains the tropical water flowing north of New Ireland and Solomon Islands.

[42] These findings are summarized in Figure 7, and the locations of the various sources within the EUC at several longitudes are represented in Figure 7. We decided to represent the dominant sources of the EUC as functions of depth and latitude (for more details about the definition of

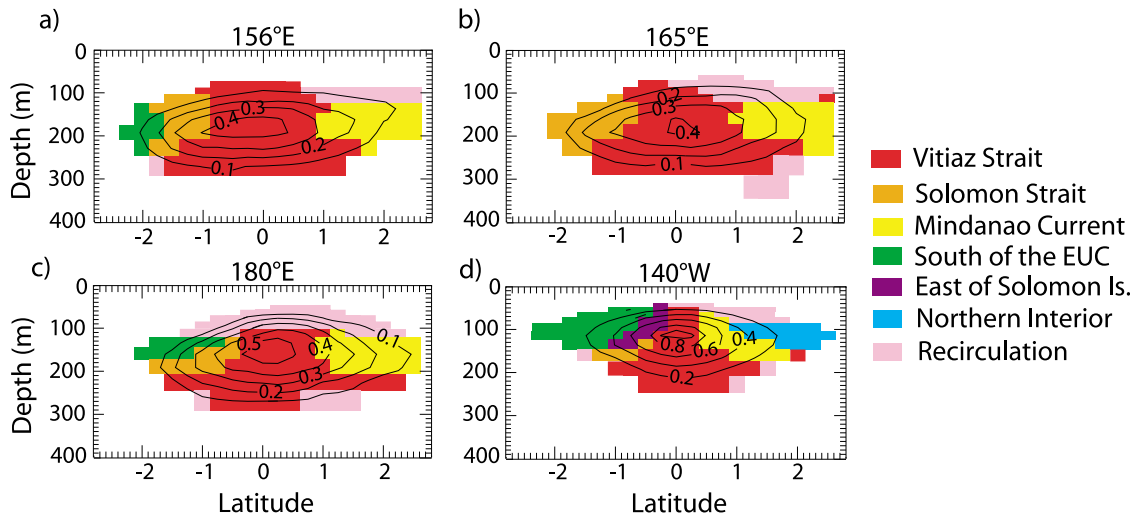


Figure 7. Recapitulative diagram of the dominant constituents of the EUC as a function of depth and latitude. The dominant source is the source that represents the largest transport within the grid cell. A red grid cell means that the largest part of transport comes from Vitiiaz Strait. However, other sources can contribute to the transport existing in this grid cell, but their transports are smaller. The color code is the same as that in Figure 5, and the mean zonal velocity profile is contoured in black with a 0.1 m s^{-1} interval (0.2 m s^{-1} interval for 140°W) for the EUC considered at (a) 156°E , (b) 165°E , (c) 180°E , and (d) 140°W .

“dominant source,” see the caption of Figure 7). It shows that along its pathway from 156°E to 140°W , the central EUC, throughout its depth, including its core, is dominated by Vitiiaz Strait waters. These waters also dominate the lower part of the EUC, between 1°S and 1°N , till 140°W . Mindanao Current and Solomon Strait waters are dominant in their respective hemispheres, poleward of 0.8° , surrounding Vitiiaz Strait waters around the EUC core depth. The contribution of Mindanao Current waters remains important in the northern part of the EUC till 140°W , whereas the Solomon Strait waters are replaced by waters coming from southern interior pathways. The upper part of the EUC is mainly ventilated by SEC waters and, from east of 180° , by interior oceanic pathways in its southern part. An important conclusion is that the EUC waters below 200 m mostly originate from the NGCU all along the equator from 156°E to 140°W . Below 280–300 m, EUC waters mainly come from EIC recirculation. This is an important result for the issue of EUC micronutrient enrichment, and this point will be discussed in section 5.

4. Maxima Transport of Sources and Associated Densities

[43] We now examine precisely the density range associated with each EUC source. For this purpose, we analyzed the transport distribution as a function of potential density at the origin sections and within the EUC at 165°E or at 140°W (Figure 8). Two different longitudes are considered because, as seen in section 3, interior oceanic sources do not contribute significantly to the EUC at 165°E , whereas they represent 23% of the total EUC at 140°W (Table 2). Thus, the density distributions were examined at 165°E for the LLWBC sources and at 140°W for the interior oceanic

sources (Figures 8a and 8b, respectively). Two curves are deduced from simulation with the Lagrangian tool representing the initial and final hydrological properties of each fluid particle. In Figure 8, gray histograms and black curves represent the transport distribution of all sources defined in Table 1, at their origin sections (coordinates in Table 1) and within the EUC, respectively. Colored histograms and curves show the same information for each LLWBC or interior source taken individually.

[44] Within the EUC at 165°E the total density distribution is characterized by a maximum of transport at $\sigma_\theta = 26.2 \text{ kg m}^{-3}$ (Figure 8a, black curve). This density is close to the lower EUC boundary defined at $\sigma_\theta = 26.8 \text{ kg m}^{-3}$. The transport distribution of waters flowing from Vitiiaz Strait, maximum at $\sigma_\theta = 26.2 \text{ kg m}^{-3}$, is clearly determining the shape of the total transport distribution, although contributions from the Solomon Strait and Mindanao Current sources remain significant. However, the maximum of transport of these two sources, occurring at $\sigma_\theta = 26.0 \text{ kg m}^{-3}$, is slightly less dense than that of Vitiiaz Strait (Figure 8a, orange and yellow curves). During its eastward transit (to 140°W), the transport distribution of the total EUC remains maximum at $\sigma_\theta = 26.2 \text{ kg m}^{-3}$ but is less confined to denser waters as the distribution is seen to broaden (Figure 8b). The apparent shift toward lighter densities results from contributions of interior oceanic sources which are, at 140°W , centered on $\sigma_\theta = 24.2 \text{ kg m}^{-3}$ (Figure 8b, black, green, and blue curves) that is within the EUC upper layer (Figure 3b).

[45] These results confirm the vertical distribution of the EUC sources illustrated in Figures 6 and 7, the densest waters originating from Vitiiaz Strait. Moreover, these transport distributions show that (1) the EUC maximum of transport is located in its lower part, below $\sigma_\theta = 25.0 \text{ kg m}^{-3}$, and (2) this maximum of transport is primarily constituted by dense

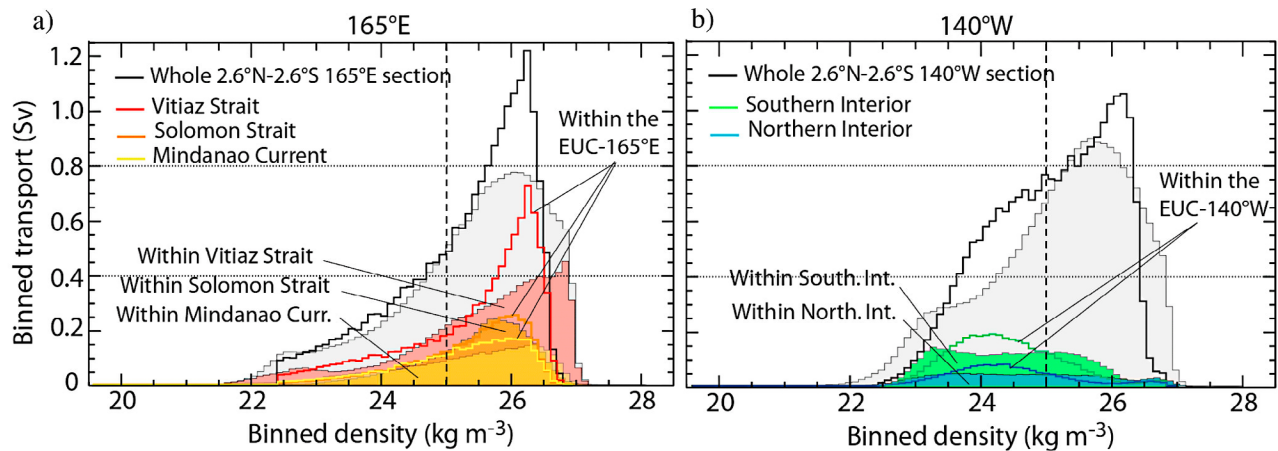


Figure 8. Contribution to the EUC transport binned as a function of density for (a) Vitiaz Strait (NGCU), Solomon Strait (NICU), and Mindanao Current and (b) Southern Interior and Northern Interior pathways. The first three sources, the LLWBCs, refer to the 165°E-EUC experiment. The last two sources, flowing through the interior ocean, refer to the 140°W-EUC experiment. The histograms refer to hydrological properties calculated at the sources, whereas the curves show the distribution within the EUC. The individual contribution of each source is shown in color, whereas the dark and gray refer to the sum of all the contributions, which amounts to the full EUC transport. The dashed line at $\sigma_\theta = 25.0 \text{ kg m}^{-3}$ represents the density limit between the upper and lower layers of the EUC. The bin interval is 0.1 kg m^{-3} .

Vitiaz Strait waters. At 140°W the contribution of the light interior oceanic waters becomes significant whereas that of the dense LLWBC-originating waters decreases (Figure 5 and Table 2). Thus, the EUC transport is more equally distributed between the upper (light) and lower (dense) parts.

[46] In the origin sections, the transport distribution as a function of density is represented by the gray shaded (total) and colored histograms (each source contribution) in Figure 8. Concerning the 165°E-EUC experiment, the total transport distribution is maximum at $\sigma_\theta = 26.0 \text{ kg m}^{-3}$. This transport distribution also includes waters denser than the EUC ones (density range $26.5\text{--}27.0 \text{ kg m}^{-3}$; Figure 8a, gray histogram). These very dense waters come from the Vitiaz Strait before joining the EUC. They are also present in the EIC (not shown), before recirculating into the EUC at 165°E. Indeed, in Vitiaz Strait the transport distribution is maximum at $\sigma_\theta = 26.8 \text{ kg m}^{-3}$ (Figure 8a, red histogram). This is consistent with observations that show strong transport on deep isopycnals downstream of the Solomon Sea (W. S. Kessler, personal communication, 2010). The two other LLWBCs' sources convey lighter waters, particularly the Solomon Strait source, with a maximum of transport at $\sigma_\theta = 25.7 \text{ kg m}^{-3}$ whereas the transport distribution within the Mindanao Current source is maximum at $\sigma_\theta = 26.3 \text{ kg m}^{-3}$ (Figure 8a, orange and yellow histograms, respectively). Within the interior sections, the transport is uniformly distributed in the density range of $23.1\text{--}25.7 \text{ kg m}^{-3}$ (Figure 8b, green and blue histograms).

[47] The most striking feature in the comparison of the initial (at the origin sections) and final (at 165°E and 140°W) transport distributions of the EUC sources is an important lightening of the very dense waters originating from Vitiaz Strait. The waters initially between 26.5 and 27.0 kg m^{-3} in Vitiaz Strait are modified so they can feed the EUC at 165°E in its density range, with a maximum of transport shifted to

$\sigma_\theta = 26.2 \text{ kg m}^{-3}$ (Figure 8a, red histogram compared to red curve). Mindanao Current waters also lighten, although less significantly. Contrastingly, Solomon Strait waters become slightly denser during their transit to 165°E. These results suggest that in the model, the EUC is fed by thermocline waters that are denser in Vitiaz Strait (and to a lesser extent in Mindanao Current) than the EUC waters. This may have important implications for geochemistry, and will be discussed in section 5.

[48] The densities of the interior oceanic sources are also modified between their origin and the EUC at 140°W. Their transport distribution is more confined within the EUC (curves in Figure 8b), meaning that relative density modifications also occur along their pathways.

[49] The simulated density modifications affecting sources of the EUC suggest that an important diapycnal mixing occurs along their pathways, particularly between Vitiaz Strait and the EUC. *Rodgers et al.* [2003], in a similar numerical approach, showed a much more important diapycnal mixing of the EUC sources between their subduction sites and 10° latitude than the mixing experienced between the LLWBCs and the EUC. Nevertheless, our results show that even along a short pathway, within a small latitude range, diapycnal mixing is important. Understanding the location, intensity and processes yielding this mixing is a key issue but beyond the scope of this study. As a first step toward such understanding, the time mean vertical eddy diffusivity (K_z) is plotted along selected density surfaces in Figure 9, in logarithmic scale because K_z spans a broad range of values. Although this diagnostic is imperfect, since K_z is highly variable in time, it helps to qualitatively identify and locate favorable mixing areas. Whatever the considered isopycnal surface, the western boundaries are clearly areas of important vertical mixing. More precisely, high vertical turbulence is seen in the Vitiaz Strait, along the PNG,

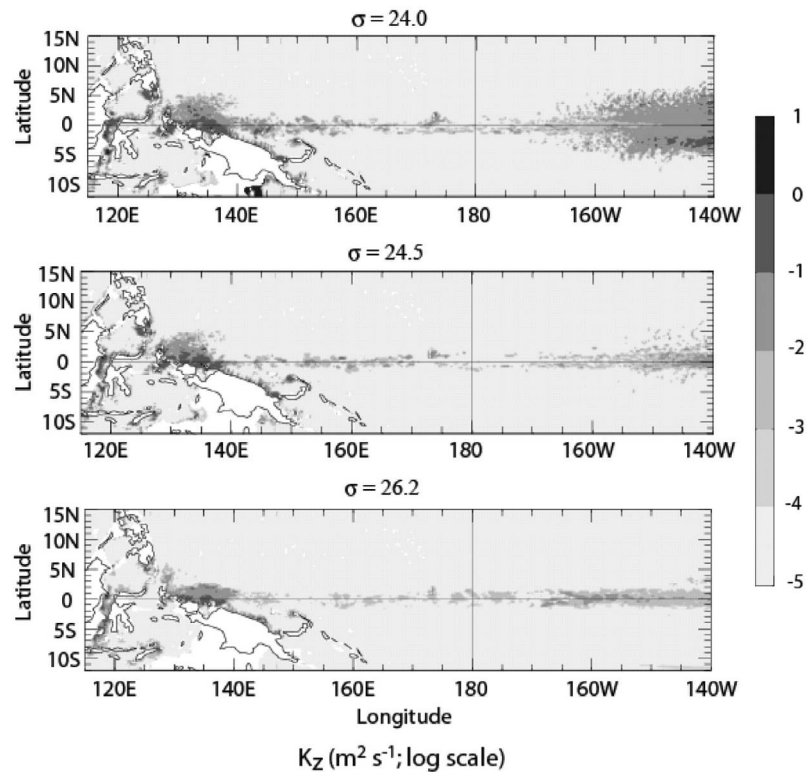


Figure 9. Time mean vertical eddy diffusion mapped with a logarithmic scale along (top) $\sigma_{\theta} = 24.0 \text{ kg m}^{-3}$, (middle) $\sigma_{\theta} = 24.5 \text{ kg m}^{-3}$, and (bottom) $\sigma_{\theta} = 26.2 \text{ kg m}^{-3}$. The 24.0 kg m^{-3} isopycnal surface corresponds to the upper layer core of interior oceanic sources. The 24.5 and 26.2 kg m^{-3} isopycnal surfaces illustrate the initial upper and lower layer cores of the LLWBCs' sources, respectively, and correspond to the central and lower thermocline.

Mindanao and Celebes coasts, north of New Ireland, within the Halmahera Eddy and within the New Guinea Eddy (NGE). Between 150°E to 165°W , K_z is weak along the equator and insignificant elsewhere (Figure 9). East of 165°W , along the equator, mixing is important, owing to vertical current shear. Along the 24.0 kg m^{-3} isopycnal surface, between 5°S and 6°N , it strengthens significantly (Figure 9, top). This indicates that EUC waters undergo continuously mixing along their pathway to the eastern Pacific.

[50] These K_z distributions are coherent with the fact that Vitiaz Strait waters are the most modified along their transit, compared to other sources. Indeed, they flow through areas of high K_z all along their travel from their source to 150°E (Figures 4b and 9). However, this conclusion does not hold for the Solomon Strait waters, which follow a similar route to Vitiaz Strait waters, without flowing along the PNG coast. An ongoing detailed analysis of the present model and other simulations together with field data will help to better understand and quantify these differences. Along $\sigma_{\theta} = 24.0 \text{ kg m}^{-3}$, the high equatorial K_z , east of 165°W suggests a favorable area for the property modifications of the interior oceanic sources which is coherent with the interior source modifications observed in Figure 8.

[51] The EUC is not the sole destination of water carried by the LLWBCs. Figure 10 shows the fate of the total equatorward transport incoming at the western boundary

sections. Waters from the NGCU also feed the NECC, mainly in the surface layer (not shown). About half of the waters flowing through Vitiaz Strait within the density range $26.9\text{--}27.2 \text{ kg m}^{-3}$ join the equatorial intermediate waters, and 30% feed the Indonesian Throughflow. Only a negligible fraction flows northward below the MC. This result conflicts with *Qu and Lindstrom's* [2004] paper that shows a northward intrusion of intermediate waters to 15°N , but it agrees with the observational and numerical results of *Zenk et al.* [2005]. Indeed, the later authors observed two fates for the Antarctic Intermediate Water (AAIW): the eastward Southern and Northern Intermediate Countercurrents (SICC and NICC) centered on 2°S and 2°N , respectively, and the deep throughflow into the Celebes Sea.

[52] The destination of the Solomon Strait outflow is almost entirely the EUC in the density range $23.0\text{--}26.0 \text{ kg m}^{-3}$ (Figure 10b). At higher densities, most of the flow recirculates within the strait, and a peak transport centered on 27.2 kg m^{-3} , corresponding to the AAIW, reaches the equatorial intermediate current system.

[53] Finally, the smallest equatorial Pacific supply comes from the Mindanao Current (Figure 10c). Indeed, almost half of the total flow, initially distributed between $\sigma_{\theta} = 21.1 \text{ kg m}^{-3}$ and $\sigma_{\theta} = 27.2 \text{ kg m}^{-3}$, feeds the Indonesian throughflow. An important southward flow centered on $\sigma_{\theta} = 27.8 \text{ kg m}^{-3}$ recirculates or feeds the equatorial and northern interior sections. This transport corresponds to

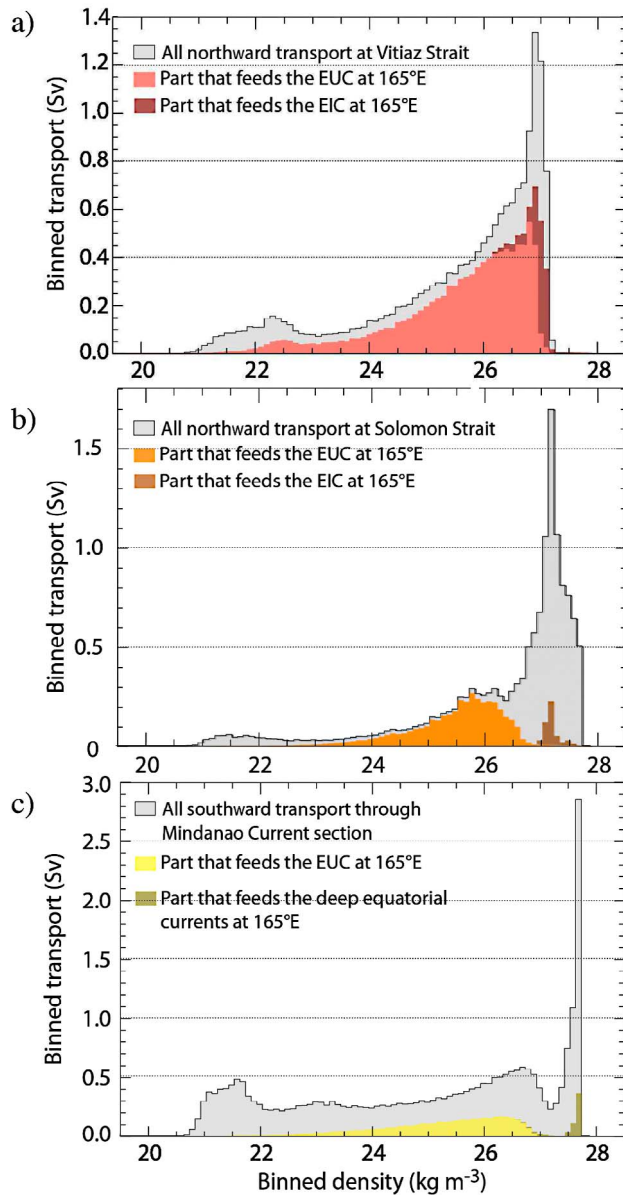


Figure 10. Transport distribution as a function of density of the equatorward inflow through the three LLWBC sections: (a) Vitiiaz Strait, (b) Solomon Strait, and (c) along Mindanao coast. The full inflow is shown in the gray background, whereas the fraction that eventually reaches the 2.625°S–2.625°N section at 165°E is shown in the foreground, with bright colors when it is conveyed by the EUC and with dark colors when it is conveyed by other equatorial currents (SEC, EIC, or deeper currents). Here, the Lagrangian particles are injected only during 10 years, from 1971 to 1980, to allow a temporal integration 10 years longer than that for the backward experiment and thus to intercept slower deep currents.

deep waters; the spin-up of the model is however too short (8 years, from 1950 to 1957) compared with the advective time scales of these waters to allow us to draw conclusions on these water masses.

5. Conclusions and Discussion

[54] This study investigated the supply of water to the EUC from the Low-Latitude Western Boundary Currents of the western Pacific. In this area, defined as a water mass crossroads by *Fine et al.* [1994], converging northern and southern hemisphere waters meet in the vicinity of the equator and mix together. Thus, their contribution to the EUC transport and their properties evolve along their pathways to the EUC. Since the EUC is the main source of waters for the equatorial upwelling, improving our knowledge about its sources is crucial.

[55] We used a Lagrangian framework applied to a 1/4° resolution OGCM to quantify the transports, pathways and density evolution of the waters that form the EUC from 156°E to 140°W. Our model results mostly confirm the pathways deduced from previous observational studies [*Tsuchiya et al.*, 1989; *Fine et al.*, 1994; *Kashino et al.*, 1996]. Yet, the modeled analysis used in this study allowed a more detailed and quantified description of these pathways. We notably found that the EUC waters at 156°E mainly come from the South Pacific LLWBCs, with 40% of the EUC transport due to waters originating from the NGCU at Vitiiaz Strait and 28% from the NICU east of New Ireland. The North Pacific LLWBC, the Mindanao Current, also significantly feeds up to 18% of the transport of the EUC. Most of these MC waters circulate into the Celebes Sea, and/or around the Halmahera Eddy before joining the equatorial band. Our results suggest that the contribution of the LLWBCs to the EUC is higher than formerly thought: west of the dateline, they supply almost the entire EUC transport.

[56] This study brings new information about the distribution of sources within the EUC. In our model, waters conveyed by the NGCU from Vitiiaz Strait are the major contributors to the EUC transport and feed its central and lower parts on both sides of the equator. Waters conveyed by the Mindanao Current and by the NICU remain within the northern (0°–2°N) and southern (2°S–1°N) portions of the EUC, respectively. The Interior Ocean ventilates the upper part of the EUC in each hemisphere while the lowest part of the EUC is fed by recirculation from the equatorial intermediate waters.

[57] Interestingly, our model also suggests that the EUC is fed by waters flowing through Vitiiaz Strait and along the PNG coasts at higher densities than those of the EUC (down to $\sigma_\theta = 27.2 \text{ kg m}^{-3}$). These waters undergo an important density modification between Vitiiaz Strait and the EUC at 165°E with notably a substantial lightening of dense waters that eventually enter the equatorial band within the range of EUC densities.

[58] Waters flowing equatorward in the MC and NICU that are incorporated into the EUC have lower densities than Vitiiaz Strait water masses. As a consequence, the waters originating from other sources than the NGCU (MC, Solomon Strait and interior pathways) are less modified in density, but also undergo mixing. Some strong vertical eddy diffusivity exists in many areas of the western equatorial

Pacific. Eastern coasts of New Guinea, New Guinea and Halmahera Eddies, New Ireland and Mindanao islands appear to be areas of increased turbulence for the upper, central and lower thermocline. In the upper thermocline, vertical mixing also occurs east of 165°W along the equator within the EUC. Thus, all pathways followed by the waters feeding the EUC are subject to mixing. The detailed location, intensity, and processes yielding this mixing will be detailed in a further work, as well as the temperature and salinity modifications of the LLWBCs' waters.

[59] The Lagrangian software coupled to the OGCM is a powerful tool, and provided important new results about the EUC sources pathways, properties and evolutions. However, the results are reliant on the model performance. The OGCM, validated against observations, showed good skill in simulating the mean currents and densities, but also some weaknesses. The validity of our results is now discussed in the light of the model drawbacks.

[60] First, the model 1/4° zonal resolution is not sufficient to resolve all the complex topography of the small islands and straits in the southwestern tropical Pacific. For instance, the St. George's Channel is closed in our model, whereas Melet *et al.* [2011] estimated its outflow to a significant transport of 2.5 Sv in the thermocline. The evolution of water masses exiting the Solomon Sea through St. George's Channel may be different from the evolution of those flowing through Solomon Strait, because the former may not undergo as strong turbulent mixing as the one diagnosed along the New Ireland coast. Our 1/4° resolution model is not fully eddy resolving and an analysis of horizontal resolution impacts is beyond the scope of this study. However, we compared our results with those given by a 1/8° resolution ROMS simulation, where the St. George's Channel is open, and found similar transports, in average different by 5%. Consequently, this comparison made us confident in the robustness of our results. Nevertheless, an interesting perspective to this work is to investigate whether our conclusions change when using a model with higher resolution and/or different numerical settings.

[61] Both the modeled NGCU along PNG and the EUC at 147°E are shallower and stronger than observed. However, the depth of the EUC core at 156°E and downstream is correctly simulated. It is possible that, in reality, the NGCU waters flowing at higher densities than modeled exit the EUC between 147°E and 156°E. The fraction of NICU waters (flowing at lower densities than the NGCU waters) that directly retroflects and join the EUC between 147°E and 156°E, without rejoining the NGCU along the PNG coast, may also be more important than the one found in the model. Thus, along the PNG coast, and west of 156°E, the real NGCU and EUC should be weaker and deeper than modeled, but the observed EUC should be similar to the modeled EUC east of 156°E. This is exactly what is shown in Figure 3. Thus, the exact pathways of the NICU branch are subject to uncertainty. However, our conclusions about the transports at 156°E and eastward should not be affected. Nevertheless, this study highlights temporal and spatial undersampling of this critical region. The transport variability of the two branches downstream the NICU bifurcation, north of New Ireland, would especially be worth sampling.

[62] Another limitation of our model is the misrepresentation of the Subsurface Countercurrents (SCCs). The southern SCC origin is located close to Solomon Strait and flows at densities close to 26.5 – 26.75 kg m⁻³ [Rowe *et al.*, 2000]. Some of the waters of the NGCU and NICU flowing at these densities may feed this SCC instead of the EUC, and our model may overestimate the contribution of these sources to the EUC. The same is true for the Mindanao Current and the northern SCC.

[63] Mackey *et al.* [2002], Lacan and Jeandel [2001], and Slemons *et al.* [2010, also submitted manuscript, 2011] highlighted the western Pacific and the NGCU as being a major source of iron for the EUC waters. Iron is considered the main limiting nutrient for phytoplankton growth in the eastern equatorial Pacific, which explains its HNLC nature [Martin *et al.*, 1994]. Our results fully support the fact that the NGCU is a major route for EUC waters. In addition, Slemons *et al.* [2010] found maximum iron concentrations to be located in the deepest part at 165°E, at ~250 m (and downstream) at densities of 26.4 kg m⁻³ while the same maximum was found deepest in the NGCU (460 m, 26.9 kg m⁻³) [see Slemons *et al.*, 2010, Figures 5 and 6]. Such depth difference was a somewhat puzzling result as it was not clear how to relate the two water masses. Our findings give a rationale for Slemons *et al.*'s [2010] results where iron rich waters from the NGCU at such low densities can eventually feed the lowest EUC part, lightening along their route to the EUC under the influence of mixing. However, our study does not provide information about the SCCs capacity to convey enriched waters toward the eastern Pacific, because of their misrepresentation in the model. Whether or not these powerful eastward veins play an important role as micro-nutrient conveyers remains to be elucidated.

[64] Finally, the Lagrangian calculations are made here over 20 years and therefore simulate pathways integrated in time. However, the pathways vary depending on the season and on the El Niño–Southern Oscillation phase [Ryan *et al.*, 2006; Gorgues *et al.*, 2010]. Ridgway *et al.* [1993] and Melet *et al.* [2010b] demonstrated that the transports in Vitiaz and Solomon Straits increase during an El Niño event. What is the fate of this excess water transport? Do these sources differently feed the EUC, which strongly weakens during an El Niño event? This should be explored in future studies.

[65] **Acknowledgments.** We would like to thank Gregory C. Johnson, Jawo Ueki, and the TAO project office for making their data available to us (TAO data are available online at <http://www.pmel.noaa.gov>). We also want to thank the DRACKAR project for making the ORCA025-G70 simulation available. We acknowledge the use of the ARIANE Lagrangian tool (<http://www.univ-brest.fr/lpo/ariane/>). Support for this study has been provided by the Centre National de Recherche Scientifique (CNRS/INSU, LEFE program), the Agence Nationale de la Recherche (ANR), and the Institut de Recherche pour le Développement (IRD). Finally, we would like to thank James W. Murray and the anonymous reviewer for their valuable comments and suggestions, which improved the quality of this paper.

References

- Arakawa, A. (1972), Design of the UCLA general circulation model: Numerical simulation of weather and climate, *Tech. Rep.* 7, 116 pp., Dep. of Meteorol., Univ. of Calif., Los Angeles.
- Barnier, B., et al. (2006), Impact of partial steps and momentum advection schemes in a global ocean circulation model at eddy-permitting resolution, *Ocean Dyn.*, 56, 543–567, doi:10.1007/s10236-006-0082-1.
- Blanke, B., and P. Delecluse (1993), Variability of the tropical Atlantic Ocean simulated by a general circulation model with two different

- mixed-layer physics, *J. Phys. Oceanogr.*, *23*, 1363–1388, doi:10.1175/1520-0485(1993)023<1363:VOTTAO>2.0.CO;2.
- Blanke, B., and S. Raynaud (1997), Kinematics of the Pacific Equatorial Undercurrent: An Eulerian and Lagrangian approach from GCM results, *J. Phys. Oceanogr.*, *27*, 1038–1053, doi:10.1175/1520-0485(1997)027<1038:KOTPEU>2.0.CO;2.
- Blanke, B., M. Arhan, G. Madec, and S. Roche (1999), Warm water paths in the equatorial Atlantic as diagnosed with a general circulation model, *J. Phys. Oceanogr.*, *29*, 2753–2768, doi:10.1175/1520-0485(1999)029<2753:WWPITE>2.0.CO;2.
- Butt, J., and E. Lindstrom (1994), Currents off the east coast of New Ireland, Papua New Guinea, and their relevance to regional undercurrents in the western equatorial Pacific Ocean, *J. Geophys. Res.*, *99*, 12,503–12,514, doi:10.1029/94JC00399.
- Chavez, F. P., and R. T. Barber (1987), An estimate of new production in the equatorial Pacific, *Deep Sea Res., Part A*, *34*, 1229–1243, doi:10.1016/0198-0149(87)90073-2.
- Chavez, F. P., and J. R. Toggweiler (1995), Physical estimates of global new production: The upwelling contribution, in *Upwelling in the Ocean: Modern Processes and Ancient Records*, edited by C. P. Summerhayes, pp. 313–320, John Wiley, New York.
- Cravatte, S., A. Ganachaud, Q.-P. Duong, W. S. Kessler, G. Eldin, and P. Dutrieux (2011), Observed circulation in the Solomon Sea from SADCP data, *Prog. Oceanogr.*, *88*, 116–130, doi:10.1016/j.pocan.2010.12.015.
- Dutrieux, P., et al. (2008), Thermocline and subthermocline currents from the central to western equatorial Pacific: A snapshot view from the EUC-Fe campaign, paper presented at the 2008 Ocean Sciences Meeting, Am. Soc. of Limnol. and Oceanogr., Orlando, Fla., 2–7 March.
- Fine, R. A., R. Lukas, F. Bingham, M. J. Warnar, and R. H. Gammon (1994), The western equatorial Pacific: A water mass crossroads, *J. Geophys. Res.*, *99*, 25,063–25,080, doi:10.1029/94JC02277.
- Fukumori, I., T. Lee, B. Cheng, and D. Menemenlis (2004), The origin, pathway, and destination of Niño-3 water estimated by a simulated passive tracer and its adjoint, *J. Phys. Oceanogr.*, *34*, 582–604, doi:10.1175/2015.1.
- Goodman, P. J., W. Hazeleger, P. de Vries, and M. Cane (2005), Pathways into the Pacific Equatorial Undercurrent: A trajectory analysis, *J. Phys. Oceanogr.*, *35*, 2134–2151, doi:10.1175/JPO2825.1.
- Gordon, A. L., and R. A. Fine (1996), Pathways of water between the Pacific and Indian oceans in the Indonesian seas, *Nature*, *379*, 146–149, doi:10.1038/379146a0.
- Gordon, R. M., K. H. Coale, and K. S. Johnson (1997), Iron distributions in the equatorial Pacific: Implications for new production, *Limnol. Oceanogr.*, *42*, 419–431, doi:10.4319/lo.1997.42.3.0419.
- Gorgues, T., C. Menkes, Y. Dandonneau, S. Alvain, C. Moulin, L. Slemmons, and M.-H. Radenac (2010), Revisiting the La Niña 1998 phytoplankton blooms in the equatorial Pacific, *Deep Sea Res., Part I*, *57*, 567–576, doi:10.1016/j.dsr.2009.12.008.
- Gouriou, Y., and J. Toole (1993), Mean circulation of the upper layers of the western equatorial Pacific ocean, *J. Geophys. Res.*, *98*, 22,495–22,520, doi:10.1029/93JC02513.
- Hautala, S. L., J. S. Reid, and N. Bray (1996), The distribution and mixing of Pacific water masses in the Indonesian Seas, *J. Geophys. Res.*, *101*, 12,353–12,373, doi:10.1029/96JC00037.
- Hayes, S. P., L. J. Mangum, J. Picaut, A. Sumi, and K. Takeuchi (1991), TOGATAO: A moored array for real-time measurements in the tropical Pacific Ocean, *Bull. Am. Meteorol. Soc.*, *72*, 339–347, doi:10.1175/1520-0477(1991)072<0339:TTAMAF>2.0.CO;2.
- Izumo, T., J. Picaut, and B. Blanke (2002), Tropical pathways, equatorial undercurrent variability and the 1998 La Niña, *Geophys. Res. Lett.*, *29*(22), 2080, doi:10.1029/2002GL015073.
- Johnson, G. C., and M. J. McPhaden (1999), Interior pycnocline flow from the subtropical to the equatorial Pacific Ocean, *J. Phys. Oceanogr.*, *29*, 3073–3089, doi:10.1175/1520-0485(1999)029<3073:IPFFTS>2.0.CO;2.
- Johnson, G. C., B. M. Sloyan, W. S. Kessler, and K. E. McTaggart (2002), Direct measurements of upper ocean currents and water properties across the tropical Pacific during the 1990s, *Prog. Oceanogr.*, *52*, 31–61, doi:10.1016/S0079-6611(02)00021-6.
- Kashino, Y., M. Aoyama, T. Kawano, N. Hendiarti, Syaefudin, Y. Anantaseña, K. Muneyama, and H. Watanabe (1996), The water masses between Mindanao and New Guinea, *J. Geophys. Res.*, *101*, 12,391–12,400, doi:10.1029/95JC03797.
- Kashino, Y., I. Ueki, Y. Kuroda, and A. Purwandani (2007), Ocean variability north of New Guinea derived from TRITON buoy data, *J. Oceanogr.*, *63*, 545–559, doi:10.1007/s10872-007-0049-y.
- Lacan, F., and C. Jeandel (2001), Tracing Papua New Guinea imprint on the central equatorial Pacific Ocean using neodymium isotopic compositions and Rare Earth Element patterns, *Earth Planet. Sci. Lett.*, *186*, 497–512, doi:10.1016/S0012-821X(01)00263-1.
- Landry, M. R., et al. (1997), Iron and grazing constraints on primary production in the central equatorial Pacific: An EqPac synthesis, *Limnol. Oceanogr.*, *42*, 405–418, doi:10.4319/lo.1997.42.3.0405.
- Large, W., and S. Yeager (2004), Diurnal to decadal global forcing for ocean and sea-ice models: The datasets and flux climatologies, *Tech. Note NCAR/TN-460+STR*, Natl. Cent. for Atmos. Res., Boulder, Colo.
- Levitus, S., et al. (1998), *World Ocean Database 1998*, vol. 1, *Introduction*, NOAA Atlas NESDIS 18, 346 pp., U.S. Dep. of Commer., Washington, D.C.
- Lindstrom, E., R. Lukas, R. Fine, E. Firing, S. Godfrey, G. Meyers, and M. Tsuchiya (1987), The western equatorial ocean circulation study, *Nature*, *330*, 533–537, doi:10.1038/330533a0.
- Liu, Z., S. G. H. Philander, and R. C. Pacanowski (1994), A GCM study of tropical-subtropical upper-ocean water exchange, *J. Phys. Oceanogr.*, *24*, 2606–2623, doi:10.1175/1520-0485(1994)024<2606:AGSOTU>2.0.CO;2.
- Lu, P., and J. P. McCreary (1995), Influence of the ITCZ on the flow of the thermocline water from the subtropical to the equatorial Pacific Ocean, *J. Phys. Oceanogr.*, *25*, 3076–3088, doi:10.1175/1520-0485(1995)025<3076:IOTIOT>2.0.CO;2.
- Lukas, R., T. Yamagata, and J. P. McCreary (1996), Pacific low-latitude western boundary currents and the Indonesian throughflow, *J. Geophys. Res.*, *101*, 12,209–12,216, doi:10.1029/96JC01204.
- Mackey, D. J., J. E. O'Sullivan, and R. J. Watson (2002), Iron in the western Pacific: A riverine or hydrothermal source for iron in the Equatorial Undercurrent, *Deep Sea Res., Part I*, *49*, 877–893, doi:10.1016/S0967-0637(01)00075-9.
- Marin, F., B. L. Hua, and S. Wacong (2000), The equatorial thermocline and subsurface countercurrents in the light of atmospheric Hadley cells mechanism, *J. Mar. Res.*, *58*, 405–437, doi:10.1357/002224000321511098.
- Marin, F., E. Kestenare, T. Delcroix, F. Durand, S. Cravatte, G. Eldin, and R. Bourdallé-Badie (2010), Annual reversal of the Equatorial Intermediate Current in the Pacific: Observations and model diagnostics, *J. Phys. Oceanogr.*, *40*, 915–933, doi:10.1175/2009JPO4318.1.
- Martin, J. H., et al. (1994), Testing the iron hypothesis in ecosystems of the equatorial Pacific Ocean, *Nature*, *371*, 123–129, doi:10.1038/371123a0.
- McPhaden, M. J. (1988), PMEL current mooring program in the tropical Pacific, in *Proceedings of the U.S. Global Ocean Flux Study Pacific Planning Report*, JGOFS Plann. Rep. 9, pp. 91–94, Woods Hole Oceanogr. Inst., Woods Hole, Mass.
- Melet, A., L. Gourdeau, W. S. Kessler, J. Verron, and J.-M. Molines (2010a), Thermocline circulation in the Solomon Sea: A modeling study, *J. Phys. Oceanogr.*, *40*, 1302–1319, doi:10.1175/2009JPO4264.1.
- Melet, A., L. Gourdeau, and J. Verron (2010b), Variability in Solomon Sea circulation derived from altimeter sea level data, *Ocean Dyn.*, *60*, 883–900, doi:10.1007/s10236-010-0302-6.
- Melet, A., J. Verron, L. Gourdeau, and A. Koch-Larrouy (2011), Equatorward pathways of Solomon Sea water masses and their modifications, *J. Phys. Oceanogr.*, *41*, 810–826, doi:10.1175/2010JPO4559.1.
- Molines, J.-M., B. Barnier, T. Penduff, L. Brodeau, A.-M. Treguier, S. Theetten, and G. Madec (2006), Definition of the interannual experiment ORCA025-G70, 1958–2004, *Rep. LEGI-DRA-2-11-2006i*, Lab. des Ecoulements Geophys. et Ind., Grenoble, France.
- Murray, J. W., R. T. Barber, M. R. Roman, M. P. Bacon, and R. A. Feely (1994), Physical and biological controls on carbon cycling in the equatorial Pacific, *Science*, *266*, 58–65, doi:10.1126/science.266.5182.58.
- Qu, T., and E. J. Lindstrom (2004), Northward intrusion of Antarctic Intermediate Water in the western Pacific, *J. Phys. Oceanogr.*, *34*, 2104–2118, doi:10.1175/1520-0485(2004)034<2104:NIOAIW>2.0.CO;2.
- Ridgway, K. R., J. S. Godfrey, G. Meyers, and R. Bailey (1993), Sea level response to the 1986–1987 El-Niño Southern Oscillation event in the western Pacific in the vicinity of Papua New Guinea, *J. Geophys. Res.*, *98*, 16,387–16,395, doi:10.1029/93JC00766.
- Rodgers, K. B., B. Blanke, G. Madec, O. Aumont, P. Ciais, and J.-C. Dutay (2003), Extratropical sources of equatorial Pacific upwelling in an OGCM, *Geophys. Res. Lett.*, *30*(2), 1084, doi:10.1029/2002GL016003.
- Rowe, G. D., E. Firing, and G. C. Johnson (2000), Pacific equatorial subsurface countercurrent velocity, transport, and potential vorticity, *J. Phys. Oceanogr.*, *30*, 1172–1187, doi:10.1175/1520-0485(2000)030<1172:PESCVT>2.0.CO;2.
- Ryan, J. P., I. Ueki, Y. Chao, H. Hang, P. S. Polito, and F. P. Chavez (2006), Western Pacific modulation of large phytoplankton blooms in the central and eastern equatorial Pacific, *J. Geophys. Res.*, *111*, G02013, doi:10.1029/2005JG000084.
- Schiller, A., P. R. Oke, G. B. Brassington, M. Entel, R. Fiedler, D. A. Griffin, and J. V. Mansbridge (2008), Eddy-resolving ocean circulation

- in the Asian-Australian region inferred from an ocean reanalysis effort, *Prog. Oceanogr.*, *76*, 334–365, doi:10.1016/j.pocean.2008.01.003.
- Schneider, N. (2004), The response of tropical climate to the equatorial emergence of spiciness anomalies, *J. Clim.*, *17*, 1083–1095, doi:10.1175/1520-0442(2004)017<1083:TROTCT>2.0.CO;2.
- Schott, F. A., J. P. McCreary, and G. C. Johnson (2004), Shallow overturning circulations of the tropical-subtropical oceans, in *Earth Climate: The Ocean-Atmosphere Interaction, Geophys. Monogr. Ser.*, vol. 147, edited by C. Wang et al., pp. 261–304, AGU, Washington, D. C.
- Slemons, L. O., J. W. Murray, T. Gorgues, O. Aumont, and C. Menkes (2009), Biogeochemical impact of a model western iron source in the Pacific Equatorial Undercurrent, *Deep Sea Res., Part I*, *56*, 2115–2128, doi:10.1016/j.dsr.2009.08.005.
- Slemons, L. O., J. W. Murray, B. Paul, and P. Dutrieux (2010), Western Pacific coastal sources of iron, manganese and aluminum to the Equatorial Undercurrent, *Global Biogeochem. Cycles*, *24*, GB3024, doi:10.1029/2009GB003693.
- Stockdale, T., A. Busalacchi, D. E. Harrison, and R. Seager (1998), Ocean modeling for ENSO, *J. Geophys. Res.*, *103*, 14,325–14,355, doi:10.1029/97JC02440.
- Tsuchiya, M., R. Lukas, R. Fine, E. Firing, and E. Lindstrom (1989), Source waters of the Pacific Equatorial Undercurrent, *Prog. Oceanogr.*, *23*, 101–147, doi:10.1016/0079-6611(89)90012-8.
- Ueki, I., Y. Kashino, and Y. Kuroda (2003), Observation of current variations off the New Guinea coast including the 1997–1998 El Niño period and their relationship with Sverdrup transport, *J. Geophys. Res.*, *108*(C7), 3243, doi:10.1029/2002JC001611.
- Uppala, S. M., et al. (2005), The ERA-40 re-analysis, *Q. J. R. Meteorol. Soc.*, *131*, 2961–3012, doi:10.1256/qj.04.176.
- Wijffels, S., E. Firing, and J. Toole (1995), The mean structure and variability of the Mindanao Current at 8°N, *J. Geophys. Res.*, *100*, 18,421–18,435, doi:10.1029/95JC01347.
- Zenk, W., G. Siedler, A. Ishida, J. Holfort, Y. Kashino, Y. Kuroda, T. Miyama, and T. J. Müller (2005), Pathways and variability of the Antarctic Intermediate Water in the western equatorial Pacific Ocean, *Prog. Oceanogr.*, *67*, 245–281, doi:10.1016/j.pocean.2005.05.003.
-
- B. Blanke, Laboratoire de Physique des Océans, UMR 6523, CNRS/IFREMER/IRD/UBO, Université de Bretagne Occidentale, UFR Sciences, 6 avenue Le Gorgeu, F-29238 Brest CEDEX, France.
- S. Cravatte, F. Durand, M. Grenier, C. Jeandel, and A. Koch-Larrouy, LEGOS, 14 Avenue Edouard Belin, F-31400 Toulouse CEDEX, France. (melanie.grenier@legos.obs-mip.fr)
- A. Melet, LEGI, UMR 5519, CNRS, Université de Grenoble, BP 53, F-38041 Grenoble CEDEX 9, France.
- C. Menkes, LOCEAN, UPMC/IRD/CNRS/MNH, Université Pierre et Marie Curie, Case 100, 4 place Jussieu, F-75252 Paris CEDEX 05, France.