



HAL
open science

Regional Dynamics of Innovation: Investigating the Co-Evolution of Patents, R&D, and Employment

Matthias Bürger, Tom Broekel, Alex Coad

► **To cite this version:**

Matthias Bürger, Tom Broekel, Alex Coad. Regional Dynamics of Innovation: Investigating the Co-Evolution of Patents, R&D, and Employment. *Regional Studies*, 2010, pp.1. 10.1080/00343404.2010.520693 . hal-00648533

HAL Id: hal-00648533

<https://hal.science/hal-00648533v1>

Submitted on 6 Dec 2011

HAL is a multi-disciplinary open access archive for the deposit and dissemination of scientific research documents, whether they are published or not. The documents may come from teaching and research institutions in France or abroad, or from public or private research centers.

L'archive ouverte pluridisciplinaire **HAL**, est destinée au dépôt et à la diffusion de documents scientifiques de niveau recherche, publiés ou non, émanant des établissements d'enseignement et de recherche français ou étrangers, des laboratoires publics ou privés.



Regional Dynamics of Innovation: Investigating the Co-Evolution of Patents, R&D, and Employment

Journal:	<i>Regional Studies</i>
Manuscript ID:	CRES-2009-0242.R1
Manuscript Type:	Main Section
JEL codes:	O18 - Regional, Urban, and Rural Analyses < O1 - Economic Development < O - Economic Development, Technological Change, and Growth, R11 - Regional Economic Activity: Growth, Development, and Changes < R1 - General Regional Economics < R - Urban, Rural, and Regional Economics
Keywords:	Regional Growth, VAR, Innovation, Employment growth

SCHOLARONE™
Manuscripts

Regional Dynamics of Innovation: Investigating the Co-Evolution of Patents, R&D, and Employment

MATTHIAS BUERGER^a, TOM BROEKEL^b, and ALEX COAD^c

^a Friedrich-Schiller-University Jena, Department of Economics & Graduate College “The Economics of Innovative Change” (DFG-GK-1411) Carl-Zeiss-Strasse 3, D-07743 Jena, Germany. Email:

matthias.buerger@uni-jena.de

^b Utrecht University, Faculty of Geosciences, Section of Economic Geography, P.O. Box 80.115, 3508

TC Utrecht, The Netherlands, Email: t.broekel@geo.uu.nl

^c Max Planck Institute of Economics, Evolutionary Economics Group, Kahlaische Straße 10, D-07745

Jena, Germany, Email: coad@econ.mpg.de

(Received July 2009; in revised form August 2010)

1
2
3
4
5 Abstract. The paper investigates the lead-lag relationships between the growth rates
6 of patents, R&D, and employment for German regions over the period 1999-2005.
7
8 The panel dataset employed includes information on four two-digit industries. The
9
10 results obtained from a vector autoregression model show that an increase in patents
11
12 is associated with subsequent growth of employment in the Medical and Optical
13
14 Equipment industry as well as in the Electrics and Electronics industry. With
15
16 respect to the latter, growth of patents is also associated with subsequent growth of
17
18 R&D. Neither of these effects can be found for the Chemicals and Transport
19
20 equipment industries.
21
22
23
24
25
26
27

28 *JEL codes:* O18, O30, R11

29
30 *Keywords:* Regional Growth, VAR, Innovation, Patents
31
32
33
34
35
36
37
38
39
40
41
42
43
44
45
46
47
48
49
50
51
52
53
54
55
56
57
58
59
60

Introduction

During the last two decades the regional dimension of innovation has gained importance in both scientific debate and innovation policy (see, e.g., Audretsch, 1998; Feldman, 1994; Jaffe, 1989; Krugman, 1991). Particular attention was given to geographically bounded knowledge spillovers (e.g., Acs et al., 1992; Jaffe et al., 1993) as well as to the spatial concentration of industries or the innovative activity as such (e.g., Audretsch and Feldman, 1996; Brenner, 2004, 2006; Brenner and Gildner, 2006; Porter, 1990). The influence of local factors on regional innovativeness has been addressed by the concept of a geographically defined 'technological infrastructure' (Feldman and Florida, 1994). Moreover, the effect of industrial concentration on regional innovative activity and growth has been subject to a heated debate, starting with the seminal work of Glaeser et al. (1992). The combination of the geographic dimension and the systemic nature of the innovation process led to the emergence of a whole new strand of research, viz. the regional innovation systems approach (e.g., Cooke, 1992; Doloreux, 2002).

With respect to the employment effects of innovation the regional dimension has been somewhat neglected in the literature, though. The interdependencies between innovation and employment have been subject to research at the firm level (e.g. Smolny, 1998; Greenan and Guellec, 2000; Coad and Rao, 2007) as well as at the industry level (e.g. Antonucci and Pianta, 2002; Evangelista and Savona, 2003). However, very little is known about how the observed effects relate to the regional level and which role agglomeration economies play in this respect. It is still unknown whether employment gains of innovative firms outweigh employment losses of non-innovative firms located in the same region.

1
2
3
4 Another unanswered question concerns differences in the impact of innovation in
5
6 different types of regions. In terms of innovation policy is 'picking the winners' more or
7
8 less effective than a levelling-out strategy? Are there differences in employment growth
9
10 and innovation dynamics between specialized and diversified regions?
11
12

13
14 The paper aims at shedding light on these issues by exploring the co-evolution of three
15
16 statistical series: growth of employment, growth of R&D and growth of patents at the
17
18 regional level for four different industries.
19

20
21 A unique panel dataset is used to gain new insights into the dynamics of innovation at a
22
23 regional level. The dataset tracks the 270 German labour market regions over the period
24
25 1999-2005. In order to exploit this dataset properly 'reduced-form' vector
26
27 autoregressions (VAR) are utilised, which have been successfully used in firm level
28
29 studies (see the survey in Coad, 2009 Chapter 5). The intention in adopting this
30
31 methodology in regional economics is to provide a description of the interrelated
32
33 processes regarding the growth rates of the three variables. New evidence shall be
34
35 presented on how regions develop over time.
36
37
38
39

40
41 The remainder of the paper is structured as follows. In the following section, the
42
43 theoretical underpinnings are presented at both, the level of the firm and the regional
44
45 level. In the third section, the particularities of the industries under consideration are
46
47 pointed out. In the subsequent section the methodology of the empirical analysis is
48
49 explained. The dataset is introduced in the fifth section, followed by the presentation
50
51 and a discussion of the results. Finally, the last section offers some concluding remarks
52
53 along with a critical discussion.
54
55
56
57
58
59
60

Theoretical Considerations

Innovation at the firm level

In the analysis of employment effects of innovation it is convenient and common practice to distinguish between product innovations and process innovations. Both types of innovation are likely to exert different effects on employment.

At the firm level product innovations are usually viewed as employment enhancing since new products create new demand. This effect will however be reduced if new products substitute other products of the firm (Harrison et al., 2005; van Reenen, 1997), a pattern that is commonly known as cannibalisation. Moreover, product innovations may also have productivity effects if affecting production methods and the input mix. Nevertheless, the positive compensation effects due to an increased demand are typically regarded as being most important (Harrison et al., 2005).

Regarding process innovations it is rather straightforward to assume that innovations will reduce the need for most of the required factors at a given output level. A first intuition therefore is that process innovations reduce employment. This is however conditional on the nature of the particular innovation, i.e. if it is rather labour or capital augmenting, as well as on the competition the firm is exposed to. A reduction in costs per unit may eventually also lead to a lower price, which in turn stimulates demand (Harrison et al., 2005). Other compensation mechanisms may gain importance as well (see Spiezia and Vivarelli, 2000 for an overview).

Consequently the sign and magnitude of innovation's firm level employment effects are not clear a priori and have to be determined empirically, which has stimulated a notable number of studies. Doms et al. (1995) explore survey data on U.S. manufacturing plants and find that the use of advanced manufacturing technologies influences plant-level employment growth in a positive way. Hall (1987, p. 603) in analyzing panel data on

1
2
3
4 the publicly traded firms in the US manufacturing sector observes that “a dollar of R&D
5
6 expenditures is a more important predictor of growth in the immediate future than is a
7
8 dollar of expenditure on physical capital”. Coad and Rao (2007) by investigating patent
9
10 data on four manufacturing industries report a rather small effect of innovation that is
11
12 more positive for large firms compared to small ones. Evangelista and Savona (2003)
13
14 instead provide evidence for a negative overall impact of innovation on employment in
15
16 the Italian services sector.
17
18

19
20
21 Lachenmaier and Rottmann (2007) draw on a panel data set of German manufacturing
22
23 firms. Their results reveal positive employment effects of innovation in general with the
24
25 impact of process innovation being higher than that of product innovation. The
26
27 respective coefficients are significant mostly for the first or second lag. Similarly
28
29 Smolny (1998) finds positive effects for both product and process innovation for West
30
31 German manufacturing firms. While Van Reenen (1997) also reports positive effects of
32
33 new products for UK manufacturing firms the coefficients for process innovations are
34
35 insignificant and small (often negative). Regarding the manufacturing sector in four
36
37 European countries Harrison et al. (2005) show that product innovation is associated
38
39 with employment growth. Moreover, they report that the tendency of process innovation
40
41 to displace employment is partly counteracted by compensation mechanisms.
42
43 Summarizing these findings one may conclude that the positive effects of product
44
45 innovation seem to be clear while the results regarding new processes are less
46
47 harmonious (see also Greenan and Guellec, 2000; Peters, 2004; Smolny, 2002).
48
49
50
51
52

53
54 Regarding the co-evolution of R&D and patenting one may think of two causal
55
56 relationships. First and most intuitive, one anticipates a positive correlation between
57
58 growth of R&D employment and later growth of patents. In order to create innovations
59
60 firms depend on creative minds, which is why R&D employees are to be considered the

1
2
3
4 most important input into the process of knowledge generation (Henderson et al., 1995;
5
6 Brenner and Broekel, 2009). Although there is indeed a positive relationship between
7
8 R&D and innovation at the firm level (e.g. Mairesse and Mohnen, 2005) various studies
9
10 indicate that there is no time lag between changes in R&D and patents (Ernst, 1998). As
11
12 a consequence Griliches (1990) regards patents as an indicator of both inventive input
13
14 and output. In this context it appears unlikely that the present study will reveal a lead
15
16 lag relationship between R&D employment and patent growth.
17
18

19
20
21 On the other hand one can rightly argue that successful firms will make further R&D
22
23 investments. If innovation leads to firm growth as described above firms may invest a
24
25 fraction of their earnings in further R&D projects in order to maintain competitiveness.
26
27 Indeed Gomory (1992, p.392) vividly describes how “R&D is often a fixed percent of
28
29 sales” and Coad and Rao (2010) show that growth of employment and sales is
30
31 associated with subsequent growth of R&D. Coad (2010) furthermore shows that
32
33 employment growth precedes growth of sales, which in turn is followed by growth of
34
35 profits. Hence the relationship between growth of patent applications and later growth
36
37 of R&D seems to be mediated through the economic success of innovation. Accordingly
38
39 a positive relationship is to be expected between growth of R&D and previous growth
40
41 of patents and/or employment. This ultimately corresponds to a 'success breeds success'
42
43 hypothesis at the firm level.
44
45
46
47
48
49
50

51 *Dynamics in the region*

52
53
54 Since the focus of this paper is the relationship between regional innovation,
55
56 employment, and R&D, the firm level effects need to be related to the more aggregate
57
58 regional level. Firms in a region are no isolated entities but may be embedded into the
59
60 regional innovation system (e.g. Cooke, 2001). They interact, i.e. they compete,

1
2
3
4 cooperate, and supply each other. Other actors in the region, such as universities or local
5
6 policy makers, also influence them. Regionally embedded firms exert influence on their
7
8 environment and are affected by it at the same time. All this has to be taken into account
9
10 when investigating the regional relationships between the aforementioned variables.
11
12

13
14 From a policy perspective the most interesting relationship is probably that between
15
16 employment and innovation in the region. Of course one cannot get to the regional
17
18 impact of innovation by simply multiplying the average firm level effect by the number
19
20 of firms in a certain area (see, e.g., Harrison et al., 2005).
21
22

23
24 One reason for why analyses treating firms as isolated fail in this context is that while
25
26 observing a positive effect for a single firm it is impossible to distinguish between an
27
28 expanding market as a result of innovation on the one hand, and simple market share
29
30 stealing effects on the other hand. If positive firm level effects are based on market
31
32 share gains at the expense of less innovative firms then the aggregate effect will be
33
34 much smaller (see, e.g., Harrison et al., 2005).
35
36

37
38 In this case, the spatial distribution of innovating firms in relation to that of non-
39
40 innovators gains importance. Most likely these distributions will overlap and the
41
42 question remains, whether for a particular region the employment gains of innovative
43
44 firms outweigh the reductions of non-innovative firms. In this respect also firm entry
45
46 (stimulated by innovation) and exit (due to eroding market shares) becomes relevant (cf.
47
48 Harrison et al., 2005; Pianta, 2005).
49
50
51

52
53 The direction of the regional effects depends among other things on an industry's
54
55 degree of spatial concentration and the spatial distribution of innovative and non-
56
57 innovative firms. In case of industries concentrated in few regions the market stealing
58
59 effects become effective in the same region in which the innovative firms are located
60

1
2
3
4 because this region is also a very likely location of non-innovative firms. Hence the
5
6 overall employment effects of innovation are smaller in this region than in the case
7
8 when the locations of less innovative and innovative firms fall apart. Such is more likely
9
10 to happen in industries rather uniformly distributed over space. In this case the
11
12 probability is higher that employment gains in one region cause employment losses in
13
14 other regions, which leads to a clear association between growth of innovation and
15
16 employment. Either way one can still expect a positive correlation between both
17
18 variables for which reason the first hypothesis to be tested is:
19
20
21

- 22
23 • Hypothesis 1: Growth of employment is
24
25 positively related to previous growth of patents.
26
27

28
29 The spatial distribution of an industry also refers to another concept in regional science,
30
31 namely agglomeration economies. During the last two decades in regional science a
32
33 large body of empirical literature has been dedicated to investigate different types of
34
35 agglomeration economies. This research is based on the seminal works of Marshall
36
37 (1890), Arrow (1962), and Romer (1986) on the one hand and on that of Jacobs (1970)
38
39 on the other hand. Therefore the literature refers to the different notions of
40
41 agglomeration economies as MAR and Jacobs externalities respectively (Glaeser et al.,
42
43 1992).
44
45
46
47

48
49 The notion of MAR-externalities addresses the spatial concentration of a single industry
50
51 (see, e.g., Rosenthal and Strange, 2001). An industry which is concentrated
52
53 disproportionately high in a region may benefit from labour market pooling, input-
54
55 output linkages, and intra-industry knowledge spillovers. Consequently the firms in
56
57 such specialised regions can produce more efficiently than elsewhere.
58
59
60

1
2
3
4 Jacobs externalities instead derive from the variety of industries in the region (see, e.g.,
5
6 Frenken et al., 2007; Neffke et al., 2008). In Jacobs' (1970) view the creation of new
7
8 knowledge is based on spillovers between rather than within industries. Accordingly,
9
10 only a large local variety of different industries allows for the beneficial exchange of
11
12 complementary knowledge, which translates into a competitive advantage for firms in
13
14 diversified regions over firms located in less diversified areas. While diversity is argued
15
16 to directly impact innovation its effect on growth of employment is likely to be
17
18 mediated through its effect on innovation.
19
20
21

22
23 Among other authors Frenken et al. (2007) distinguish an additional form of
24
25 agglomeration economies, i.e. urbanisation economies. While the name is often used
26
27 synonymously with Jacobs externalities the definition used here refers to it as being
28
29 independent from a region's industrial structure. Urbanisation economies are rather seen
30
31 as arising from urban size and population density per se. Urban centres not only host
32
33 universities and extramural research facilities but also important social or cultural
34
35 organisations. Frenken et al. (2007, p. 687) argue that "it is the dense presence of these
36
37 organizations ... that supports the production and absorption of know-how, stimulating
38
39 innovative behaviour, and which contributes to differential rates of interregional
40
41 growth."
42
43
44
45
46
47

48 Research has been dedicated to analyze empirically the relationship between all kinds of
49
50 externalities and regional economic growth on the one hand (e.g., Glaeser et al., 1992;
51
52 Henderson et al., 1995; Henderson, 1997; Combes, 2000; de Lucio et al., 2002) and
53
54 their influence on regional innovation activities on the other hand (e.g., Feldman and
55
56 Audretsch, 1999; Paci and Usai, 1999; Greunz, 2004; van der Panne and van Beers,
57
58 2006). Positive evidence for all types of externalities has been found (see Beaudry and
59
60 Schiffauerova, 2009 for an overview). In keeping with this literature the present study

1
2
3
4 explores the effects of agglomeration economies on the growth rates of employment,
5
6 innovation as well as R&D and thus contributes to both strands in the literature. Which
7
8 industry benefits from which type of agglomeration economies is unclear a priori.
9
10
11 Therefore, the second hypothesis is put forward as:

- 12
13
14 • Hypothesis 2: Depending on the industry there is
15
16 a positive relationship between some indicator of
17
18 agglomeration economies and economic growth.
19
20
21

22 The aforementioned firm-level 'success-breeds-success' mechanisms as reflected in a
23
24 lead-lag relationship between innovation and R&D and/or employment and R&D is
25
26 likely to be observed at the regional level, too. However, the regional dimension adds an
27
28 extra rationale for a positive relationship between the growth of innovation and
29
30 subsequent growth of R&D.
31
32

33
34 A spinoff from an incumbent firm represents an important vehicle for regional
35
36 knowledge transfer. A considerable number of research projects have been set up in
37
38 order to explore the regularities of market entry by spinoffs. Klepper and Thompson
39
40 (2005) summarize the findings from some of the most important studies concerning the
41
42 semiconductor, automobile, hard drive, and biotech industry. With respect to these
43
44 studies around 20% of all entrants can be considered spinoffs, which are markedly good
45
46 performers. Spinoffs are typically formed by a few well educated employees whose
47
48 prime reason for starting an own business has been identified in strategic disagreements
49
50 with the incumbent firm's management (Klepper and Thompson, 2005; Klepper and
51
52 Sleeper, 2005).
53
54
55
56

57
58 It may rather be the case that spinoffs and their well-educated personnel will contribute
59
60 to a large degree to the category of R&D employees in the present study. An increase in

1
2
3
4 innovations also implies an increase in potential disagreements on how to pursue these
5
6 innovations and thus raises the opportunities for potential entrepreneurs to start their
7
8 own businesses. Both the decision to leave the old employer and start a new venture as
9
10 well as the replacement of R&D personnel in the incumbent firm are very likely to
11
12 require quite some time. It is thus plausible to anticipate a certain delay for the effects of
13
14 a growing number of patent applications on growth of R&D employees.
15
16

17
18 Accordingly the last two hypotheses tested address the existence of ‘success-breeds-
19
20 success’ mechanisms and spin-off effects in the region:
21
22

- 23
24 • Hypothesis 3: Growth of employment is
25
26 succeeded by growth of R&D.
27
- 28
29 • Hypothesis 4: Growth of patents precedes growth
30
31 of R&D.
32
33

34 35 36 Industry Characteristics

37
38 The present study distinguishes between four different industries: Chemicals (CHEM),
39
40 manufacturers of transport equipment (TRANS), Electrics and Electronics (ELEC), and
41
42 manufacturers of medical, optical, and precision instruments (INSTR). These industries
43
44 differ with respect to their spatial distribution, innovation modes, and production
45
46 schemes.
47
48
49

50
51 For instance innovations can be very heterogeneous in value for firms of different
52
53 industries (Van Reenen, 1997). In scale intensive industries, such as transport
54
55 equipment, process innovations are of outweighing importance (Arndt, 2000), whereas
56
57 the firms in the instruments industries focus on product innovations (Pavitt, 1984). Also
58
59
60

1
2
3
4 the degree to which innovations are captured by common innovation indicators varies
5
6 between industries (Arundel and Kabla, 1998; Cohen et al., 2000).
7
8

9 Concerning Europe's largest firms in the 'manufacturers of automobiles' and
10 'manufacturers of other transport equipment' industry Arundel and Kabla (1998) report
11 a sales-weighted patent propensity rate for process (product) innovations of only 17 %
12 (30 %) and 10.9 % (31.2 %) respectively. In contrast, the ratio for process (product)
13 innovations for chemicals and pharmaceuticals in the same study is 39 % (57.3 %) and
14 45.6 % (80%) respectively. For the industries covered by ELEC the authors report ratios
15 of slightly above 20 % for process innovations and of around 50 % for product
16 innovations. For precision instruments the reported ratios for both kinds of innovations
17 are about 50 %. Cohen et al. (2000) arrive at similar results for U.S. manufacturing
18 firms.¹
19
20
21
22
23
24
25
26
27
28
29
30
31
32

33 These differences have to be kept in mind as the present study relies on patent data as an
34 innovation indicator. Scepticism arises about finding the relations specified in
35 hypotheses 1 and 4 for the manufacturers of transport equipment (TRANS). The patent
36 propensity rate in this industry is extremely low, most notably for new processes which
37 are however eminently important in this sector.
38
39
40
41
42
43
44

45 Regarding the Chemicals industry there is another reason to be pessimistic about the
46 detection of innovation dynamics in the present data. Firms in this industry face a rather
47 long time-to-market for new products. For the pharmaceutical industry, e.g., Dranove
48 and Meltzer (1994) report an average time from a drug's first patent application to its
49 approval by the FDA of about thirteen years. Only at this time the employment effects
50 of innovation may become visible. However, the data at hand do not allow for
51 considering more than three one-year lags. Thus it is rather questionable whether the
52
53
54
55
56
57
58
59
60

1
2
3
4 expected co-evolutionary dynamics concerning patents (hypotheses 1 and 4) can be
5
6 detected in this industry. Moreover, the employed classification does not allow
7
8 disaggregating the chemicals industry into organic and inorganic chemistry as well as
9
10 pharmaceuticals. These branches might however be characterized by varying co-evolution
11
12 patterns, which can lead to insignificant results at the higher level of aggregation used in
13
14 the paper.
15
16

17
18 Malerba and Orsenigo (1995, p. 62) show 'that patterns of innovative activities differ
19
20 systematically across technology classes'. In their study the authors identify two groups
21
22 of technological classes, commonly known as 'Schumpeter Mark I' and 'Schumpeter
23
24 Mark II'. Innovative activities within these groups follow very different rules. The first
25
26 is characterized by a widening pattern, i.e. main innovative contributions stem from
27
28 small firms and the entry of new innovators is high. The latter instead is dominated by
29
30 large corporations representing a stable core of persistent innovators. Malerba and
31
32 Orsenigo (1996) identify large parts of the instruments industry as 'Schumpeter Mark I'
33
34 whilst they classify Chemicals and Electronics into 'Schumpeter Mark II'. Considering
35
36 the study by Coad and Rao (2007) finding more positive effects for large compared to
37
38 small firms one must expect to find more explicit evidence for hypothesis 1 in the
39
40 electrics and electronics industry.²
41
42
43
44
45
46

47
48 It has been argued above that industries may differ as to the extent to which they benefit
49
50 from different types of agglomeration economies. Pavitt (1984) offers a way to classify
51
52 industries according to their innovation characteristics; a taxonomy which has been
53
54 validated in recent studies (e.g. Archibugi, 2001; de Jong and Marsili, 2006). According
55
56 to this taxonomy CHEM and ELEC are to be considered science based industries in
57
58 which innovation mainly originates from the firms' own R&D activities based on the
59
60 underlying sciences. The firms concentrate on their principal sector which can hardly be

1
2
3
4 entered by firms outside the industry because of the sophisticated technologies applied
5
6 (Pavitt, 1984). Given this sophistication one would expect these industries to benefit
7
8 rather from MAR as opposed to Jacobs externalities.
9

10
11 The same holds for scale-intensive producers which Pavitt (1984) identifies in the motor
12
13 vehicles industry. There “innovative firms produce a relatively high proportion of their
14
15 own process technology” and “make a relatively big contribution to all the innovations
16
17 produced in their principal sectors of activity” (Pavitt, 1984 p.359). Accordingly it is
18
19 rather straightforward to presume a less important role of Jacobs externalities compared
20
21 to MAR externalities for TRANS.
22
23
24

25
26 For INSTR instead Jacobs externalities might be more relevant than in other industries.
27
28 Pavitt (1984) classifies instrument engineering firms into the category of specialised
29
30 suppliers. In such industries innovative impetus stems from a variety of firms outside
31
32 the principal sector while its innovations in turn are used in a number of other sectors.
33
34 This already illustrates the role played by other industries and, as a consequence, a large
35
36 local variety of sectors may be conducive to the industry’s innovative activities.
37
38
39
40
41

42 Methodology

43
44
45 One of the main aims of this paper is to exploit a unique dataset that provides fresh
46
47 insights into industrial dynamics at the regional level. This panel dataset tracks a
48
49 reasonably large number of regions over the period 1999-2005. The main focus of this
50
51 study is on the observation of the co-evolutionary dynamics between the three statistical
52
53 series – employment, R&D, and patenting activity. In recognition of the complex and
54
55 endogenous nature of the growth of employment, R&D and patents, a vector
56
57 autoregression model is applied.
58
59
60

The regression equation of interest is of the following form:

$$w_{rt} = c + \beta w_{r,t-1} + CTRL_{rt} + \varepsilon_{rt} \quad (1)$$

where w_{it} is an $m \times 1$ vector of random variables for region r at time t . β corresponds to an $m \times m$ matrix of slope coefficients that are to be estimated. In this particular case, $m=3$ and corresponds to the vector (Employment growth (r,t), R&D growth (r,t), growth of patent applications (r,t)). CTRL refers to our control variables, which are the specialization index, the diversity variable, and the population density of a region. ε is an $m \times 1$ vector of disturbances.

In keeping with previous studies, the measure of growth rates is based on the differences of the logarithms of the respective variables. Let $X_r(t)$ represent the absolute value of total employment, R&D employees, or patent applications in region r at time t . Define the normalized (log) value of this variable as

$$x_r(t) = \log(X_r(t)) - \frac{1}{N} \sum_{r=1}^R \log(X_r(t)) \quad (2)$$

where R is the number of regions. In what follows growth rates are defined as the first difference of normalized (log) values according to

$$g_r(t) = x_r(t) - x_r(t-1) \quad (3)$$

Thus common macroeconomic shocks are already controlled for because the growth rate distribution was normalized to zero for each variable in each industry in each year.

Equation (1) is estimated via 'reduced-form' VARs, which do not impose any a priori causal structure on the relationships between the variables, and are therefore suitable for the explorative nature of this analysis. These reduced-form VARs effectively correspond to a series of m individual OLS regressions (Stock and Watson, 2001).

1
2
3
4 One problem with OLS regressions in this particular case, however, is that the
5
6 distribution of growth rates is typically exponentially distributed and has much heavier
7
8 tails than the Gaussian. The heavy tailed nature of growth rate distributions has been
9
10 observed for the growth of firms (Coad 2009, Chapter 3), industrial sectors (Castaldi
11
12 and Sapio, 2008) as well as at the level of countries (Lee et al., 1998). Figure 1 shows
13
14 that the unconditional growth rates distributions for the present regional data also
15
16 exhibit heavy tails. In this case OLS may provide unreliable results, and as a result
17
18 Least Absolute Deviation (LAD) estimation seems to be appropriate, as it is better
19
20 suited to the case of non-Gaussian residuals.³
21
22
23
24
25

26 **FIGURE 1 ABOUT HERE**
27

28
29 Since the main variables are expressed in terms of growth rates (i.e. differences rather
30
31 than levels), one is not concerned with the issue of unobserved heterogeneity in the
32
33 form of time-invariant region-specific 'fixed effects' because these fixed effects have
34
35 effectively been removed in the process of taking differences.
36
37

38
39 It is also worth emphasizing that issues of causality between growth of employment,
40
41 R&D and patents are not claimed to be strictly resolved. Instead, the results shall be
42
43 interpreted merely in terms of describing the regularities that may be observed during
44
45 the processes of industrial and regional evolution.
46
47
48
49
50

51 **The Dataset**

52

53
54 The 270 German labour market regions are chosen as unit of analysis, because they
55
56 seem to best capture the regional dimension of innovation processes (Broekel and
57
58 Binder, 2007) and have been used in similar studies (see, e.g., Combes, 2000).
59
60

1
2
3
4 The data on patent applications is published by the German Patent Office in Greif and
5
6 Schmiedl (2002). The applications by public research institutes as well as the patent
7
8 applications by private inventors are not included. The latter is because the
9
10 corresponding R&D employment data covers only industrial R&D. Hence, only the
11
12 innovations resulting from industrial R&D should be considered.
13
14

15
16 Data on R&D employees is obtained from the German labour market statistics provided
17
18 by the German Federal Employment Agency. It covers all employees subject to social
19
20 insurance contribution. The R&D personnel is defined as the sum of the occupational
21
22 groups agrarian engineers (032), engineers (60), physicists, chemists, mathematicians
23
24 (61) and other natural scientists (883) (Bade, 1987, p. 194ff.). From the same source
25
26 data on industries' total regional employment are obtained. For sound empirical
27
28 estimations the number of R&D employees is subtracted.
29
30
31

32
33 Conducting industry specific analyses requires a definition of industries that, in the
34
35 context here, covers all three variables: patent applications, R&D employees, and total
36
37 employment. In the case of R&D employees and total employment this is easy. Both are
38
39 organized according to the German Industry Classification, which is the German
40
41 equivalent to the international NACE classification. However, the patent applications
42
43 are classified according to 31 technological fields (TF) defined by Greif and Schmiedl
44
45 (2002). A concordance between these two classifications is applied that has been
46
47 developed by Broekel (2007). It adapts the concordance by Schmoch et al. (2003) to the
48
49 present data. Table 1 gives an overview of the industries and the included technological
50
51 fields.
52
53
54
55
56
57
58

59 TABLE 1 ABOUT HERE
60

1
2
3
4 Following van der Panne and van Beers (2006) the presence of MAR-externalities is
5
6 approximated by an industry's location coefficients (*SPEC*). This index is defined as an
7
8 industry's employment share in a region related to the same ratio at the national level
9
10
11 (see, e.g., Feldman and Audretsch, 1999).

$$12 \quad SPEC_{s,r} = \frac{empl_{s,r} / empl_r}{empl_s / empl}$$

13
14
15
16
17
18 with $empl_{s,r}$ and $empl_s$ referring to the employment of sector s and $empl_r$ and $empl$
19
20 represent the total employment in region r and Germany respectively. As put forward
21
22 by Laursen (1998) the index is made symmetric by estimating:

$$23 \quad \frac{SPEC_{s,r} - 1}{SPEC_{s,r} + 1} + 1$$

24
25
26
27
28
29
30 The normalised location coefficient takes values between zero and two. A value of unity
31
32 indicates that the regional employment share of the respective industry equals the
33
34 industry's average employment share in Germany.

35
36
37 In a common fashion, urbanization advantages are approximated by population density
38
39 (Fritsch and Slavtchev, 2008). It is estimated as the number of inhabitants per square
40
41 kilometre (*POP_DEN*). The data for this variable are obtained from the German Federal
42
43 Institute for Research on Building (INKAR, 2005).

44
45
46
47 In the literature, Jacobs externalities are approximated by many different indices.
48
49 Following Henderson et al. (1995) an inverted Hirschman-Herfindahl index based on
50
51 industry employment is used in this paper. As suggested by Combes (2000) the index is
52
53 normalized at the value it takes at the national level. The index is estimated the
54
55 following.
56
57
58
59
60

$$DIV_{s,r} = \frac{1/\sum_{s'=1, s' \neq s}^S (emp_{s',r} / (emp_r - emp_{s,r}))^2}{1/\sum_{s'=1, s' \neq s}^S (emp_{s'} / (emp - emp_s))^2}$$

S represents the total number of sectors, i.e. the number of two-digit manufacturing industries. The numerator is maximal in the case that all industries (except the one under investigation) are of identical size. The advantage of this diversification index is that it estimates the “sectoral diversity faced by sector *s* in this zone [region] and is therefore not necessarily negatively linked with the own local specialization of sector *s*” (Combes, 2000, p. 337). Hence, it is an industry specific diversification index, which is not just reflecting ‘negative specialization’. It indicates the diversification in the manufacturing sector. The index shares the same non-symmetry as the location coefficient, which is why it is made symmetric in an identical manner.

Some basic summary statistics regarding the main variables are reproduced in Table 2. The sizes of the four industries vary considerably across the regions. There are also a few null values in some cases for each of the variables leading to the exclusion of some observations in the subsequent analysis based on growth rates. In addition, data constraints limit this study to no more than three lags because of a sharp decline in the number of observations if more lags are taken.

TABLE 2 ABOUT HERE

In order to check for spatial autocorrelation Moran’s *I* was estimated on the regions’ average growth rates (see Table 3). Average growth rates were used because they reflect the fundamental relations between the regions in contrast to fluctuating yearly growth rates. While most of the growth rates show significant spatial autocorrelation the correlation coefficient is very low. Therefore, this should not bias the subsequent

1
2
3
4 estimations in any serious way. This is even more so as LAD estimation techniques are
5
6 preferred over standard OLS.
7
8
9

10
11 TABLE 3 ABOUT HERE
12
13

14 15 Results

16
17
18 The exhaustive results of the ‘reduced-form’ vector autoregressions are reproduced in
19
20 Table 4, which should be read as follows. In the first row, the dependent variable is
21
22 employment growth, and the explanatory variables are the three VAR series (three lags
23
24 are included) and also the control variables; at the end of the row the R^2 and the number
25
26 of observations are reported. The second row shows the regression with patent growth
27
28 as the dependent variable, and the third row shows the regression with R&D growth as
29
30 the dependent variable, and the third row shows the regression with R&D growth as
31
32 the dependent variable.
33
34
35
36

37
38 TABLE 4 ABOUT HERE
39
40

41 42 *Autocorrelation Series*

43
44 With respect to the observed autocorrelation R&D growth does not appear to be
45
46 persistent. The respective coefficients are sometimes positive and sometimes negative
47
48 but almost always insignificant. Growth of total employment instead shows a certain
49
50 positive persistence. In fact the coefficients are positive and significant for the first lag
51
52 in the transport equipment industry (TRANS), for the first and second lag in the
53
54 Electrics and Electronics industry (ELEC), as well as for the second lag in the Chemical
55
56 industry (CHEM). Only for the manufacturers of medical, optical and precision
57
58 instruments (INSTR) the coefficients remain insignificant.
59
60

1
2
3
4 By contrast what turns out to be consistent over all industries is a negative
5 autocorrelation of the patent growth variable, with coefficients of decreasing
6 magnitudes for longer lags. The coefficients are negative and highly significant for all
7 lags and all industries. A first intuition that this regularity could be caused by regions
8 with very small amounts of patents is not confirmed by an analysis of sub-samples (see
9 tables A1 and A2 in the appendix). The effect is confirmed for high and low patenting
10 regions as well as for regions with high and low industry employment. Hence, this
11 result might be ascribed to erratic growth dynamics since the innovative process as
12 measured by patenting activity has a large stochastic element. Fortuity deriving from the
13 non-deterministic nature of human creativity is always an inherent part of the innovative
14 activity. However, the regularity of this pattern is surprisingly strong for which reason
15 future research should investigate this in more detail.
16
17
18
19
20
21
22
23
24
25
26
27
28
29
30
31
32
33

Innovation and Employment

34
35
36
37 Turning to hypothesis 1, for TRANS there are no significant correlations between
38 growth of patent applications and subsequent growth of total employment. This,
39 however, is perfectly in line with previous expectations concerning the industry's low
40 patent propensity rate. Moreover, this industry is the most agglomerated of all four
41 industries considered here and the results very likely encompass market-stealing effects
42 within the region. Such may hide as well the 'real' relationship between these variables.
43
44
45
46
47
48
49
50

51
52 Concerning CHEM the coefficient for the first lag of growth of patent applications is
53 negative and significant at the 10 % level, although the effect vanishes once the sample
54 is split into high and low employment regions. While a possible explanation for this
55 might be market-stealing effects within the region, the correlation should not be
56 overrated because of the low significance level, the industry's comparatively low
57
58
59
60

1
2
3
4 regional concentration and the long time-to-market. As in the transport equipment
5
6 industry the insignificant coefficients are consistent with earlier arguments based on the
7
8 industry's innovation characteristics.
9

10
11 For the remaining two industries expectations were different and so are the results.
12
13 Hypothesis 1 appears to be valid for the industries ELEC and INSTR. In both cases
14
15 growth of patents is associated with subsequent growth of total employment. Regarding
16
17 ELEC the coefficients are positive and significant for all three lags. The relationship is
18
19 strongest for the first two lags, which coincides with the findings by Lachenmaier and
20
21 Rottmann (2007) who report positive effects for the first and second lag at the level of
22
23 the firm. Moreover, the effect is stronger in regions which are larger in terms of industry
24
25 employment.
26
27
28
29

30
31 For INSTR the analysis reveals positive coefficients for the second and the third lag of
32
33 growth of patents, both being highly significant. However, in regions with low industry
34
35 employment this relationship is not observable. Only for larger regions one can note
36
37 that growth of patents is followed by growth of total employment two and three years
38
39 later. Compared to ELEC the coefficients are smaller confirming the findings by Coad
40
41 and Rao (2007). As in their analysis the relationship between innovation and
42
43 employment here seems to be more pronounced in an industry (ELEC) in which
44
45 innovation is dominated by large firms (Malerba and Orsenigo, 1996).
46
47
48
49

50
51 As a robustness check, the possibility was investigated that patents and R&D are
52
53 imperfect indicators of a region's underlying innovation activity, although they both
54
55 shed light on different facets of the innovation process. Therefore Principal Components
56
57 Analysis (PCA) was used to extract the common variance between R&D levels and
58
59 patent counts,⁴ and then growth of innovation was calculated in terms of growth of this
60

1
2
3
4 PCA-generated variable. The results from this robustness check (not shown here) are
5
6 that innovation is positively associated with subsequent employment growth in the
7
8 ELEC sector, but no significant results were found for the other sectors.
9

10
11 In sum, the findings that patent growth is followed by employment growth suggest that,
12
13 (i) there are positive compensation effects of innovations, and (ii) the employment gains
14
15 of innovative firms are higher than the losses of less innovative firms potentially located
16
17 in the same region.
18
19

20 21 22 *Agglomeration Economies* 23

24
25 Regarding hypothesis 2 it has been argued that, for the CHEM, ELEC, and TRANS
26
27 sectors, Jacobs externalities would be less relevant than MAR externalities due to the
28
29 industries' innovation characteristics as reported in Pavitt (1984). The empirical results
30
31 seem to support this view.
32
33

34
35 Specialisation is positively related to employment growth in the industries CHEM and
36
37 ELEC, while at the same time the coefficients for diversity remain insignificant. Put
38
39 differently, specialised regions experience stronger growth of employment than less
40
41 specialised regions. Dividing the dataset reveals that in both industries this effect is
42
43 more pronounced in regions with less industry employment (see Tables A1 and A2 in
44
45 the appendix). For CHEM the effect even vanishes for larger regions while in smaller
46
47 regions specialisation is additionally associated with growth of patents. The result
48
49 indicates the existence of a self-reinforcing process regarding smaller regions. Small
50
51 specialised regions grow faster in terms of employment which ceteris paribus again
52
53 increases the regions' degree of specialisation. This might as well indicate a process of
54
55 regional reallocation of employment towards smaller, though already specialised,
56
57 regions.
58
59
60

1
2
3
4 For TRANS the same mechanisms as for CHEM and ELEC were expected but the
5
6 coefficients for specialisation are insignificant. Nevertheless, there is a significantly
7
8 negative relationship between diversity and employment growth. This relationship
9
10 especially holds for regions with low industry employment in which population density
11
12 is furthermore negatively correlated with growth of R&D. Considering only high
13
14 employment regions, though, reveals a positive relationship between the degree of
15
16 specialisation and growth of R&D employees. This is to say that diversified urban
17
18 regions with low industry employment seem to be disadvantaged against specialised
19
20 regions with high industry employment.
21
22
23
24

25
26 The results also reveal that MAR externalities do not necessarily affect all employment
27
28 groups equally. Instead there seems to be a regional reallocation of R&D employees
29
30 towards large and specialised regions, which highlights the importance of intra-industry
31
32 knowledge spillovers for this industry as argued earlier in this paper. As total
33
34 employment does not appear to be affected by specialisation, the transport industry
35
36 might benefit from a relatively specialised manufacturing structure which is related to,
37
38 but not exclusively consisting of, firms from the transport equipment industry.
39
40 Important suppliers, for example, could potentially be classified into the machinery
41
42 industry (NACE 29).
43
44
45
46

47
48 Interestingly, neither specialisation nor diversity is related to growth in the INSTR
49
50 industry. Only low industry employment regions somehow seem to benefit from
51
52 specialisation. Although it has been argued that Jacobs externalities would be more
53
54 conducive to growth in specialised supplier industries like instrument engineering
55
56 (Pavitt, 1984), the results do not support this line of reasoning. One explanation could
57
58 be the relatively broad industry classification. Beaudry and Schiffauerova (2009) indeed
59
60 show that at such aggregated levels only a small percentage of studies find a positive

1
2
3
4 relationship between diversity and innovation. Moreover, it is possible that diversity
5
6 influences the innovation level in a region but not so much its growth rates which in
7
8 general seem to be harder to explain. The missing link between diversity and growth of
9
10 employment, though, is less surprising as this relationship is likely to be an indirect one
11
12 mediated through growth of innovation which, however, separately enters into the
13
14 regression.
15
16

17 18 19 20 *R&D Dynamics*

21
22 The assumption of a positive relationship between growth of employment and
23
24 subsequent growth of R&D put forward in hypothesis 3 is based on a ‘success-breeds-
25
26 success’ mechanism. The results confirm the findings by Coad and Rao (2007) for the
27
28 industries CHEM and TRANS at the regional level. In both industries past growth of
29
30 employment is associated with growth of R&D employees one year later. For TRANS
31
32 this effect is also detectable at the third lag while there is no such effect in the ELEC
33
34 and INSTR industry.
35
36

37
38
39 Dividing the sample reduces the number of observations causing the disappearance of
40
41 this effect in the CHEM industry. For TRANS instead the positive relationship can be
42
43 observed at all three lags in small regions but only at the third lag in high employment
44
45 regions. Remarkably, growth of employment is also associated with growth of R&D
46
47 employees three years later in high industry employment regions in the INSTR industry.
48
49 The same holds for ELEC when only low employment regions are considered. The
50
51 somewhat longer lag structure may indicate that this effect is mediated through an
52
53 increase in sales which succeeds growth of employment as reported by Coad (2010).
54
55 Hence there is evidence for the validity of hypothesis 3 and thus for a regional ‘success-
56
57
58
59
60

1
2
3
4 breeds-success' mechanism in all industries which is, however, dependent on the size of
5
6 the region.
7

8
9 As to hypothesis 4 regarding the relationship between patent growth and subsequent
10 growth of R&D employees there are no significant correlations in the INSTR industry.
11
12 But, surprisingly, the coefficient for the second lag of growth of patents is negative and
13 significant for high and low employment regions in the TRANS industry as well as for
14 regions with high industry employment in the CHEM industry.
15
16
17
18
19

20
21 There are several possible explanations for this relationship related to, e.g., the
22 restructuring of R&D capacities. Most likely, however, the results indicate an
23 innovation cycle in which a period of high innovative activities is followed by a period
24 in which innovation activities are reduced. Due to the different reaction times of the two
25 variables the above patterns may emerge. These cycles may relate to an industry's
26 business cycle (see, e.g, Giedeman et al. 2006). However, such explanations remain
27 speculative. Moreover, as patents are a very weak innovation indicator in the TRANS
28 industry and considering the long time-to-market in the CHEM industry such
29 relationship should not be overrated.
30
31
32
33
34
35
36
37
38
39
40
41
42

43 The expected positive correlations though are found for ELEC, which provides support
44 for hypothesis 4 in this industry. The coefficients for the second and the third lag are
45 positive and significant at the 5% level. Hence growth of patent applications is
46 associated with growth of R&D employees two and three years later. This either
47 suggests a 'success-breeds-success' mechanism and/or increased chances for
48 opportunity spinoffs in this industry. Dividing the sample reveals that the relationship is
49 driven by regions with high industry employment for which the effect is also detectable
50 at the first lag. In low employment regions, though more numerous, the effect vanishes.
51
52
53
54
55
56
57
58
59
60

1
2
3
4 This is in line with the employment effects of innovation which are found to be stronger
5
6 in high employment regions as well. Hence larger regions in general seem to benefit
7
8 more from innovation in this industry.
9

10 11 12 13 Conclusions

14
15
16 The paper aimed at investigating the co-evolutionary dynamics, i.e. the lead-lag
17
18 relationship between growth of patent applications, R&D, and employment for German
19
20 labour market regions over a period of seven years. Different types of agglomeration
21
22 economies were additionally controlled for. The unique panel dataset employed
23
24 comprises the Chemicals industry, manufacturers of transport equipment, manufacturers
25
26 of medical, optical, and precision instruments, as well as the Electrics and Electronics
27
28 industry. Because of the complex and endogenous nature of the respective growth rates,
29
30 'reduced form' vector autoregressions were applied. In introducing this methodology
31
32 into the regional innovation literature the analysis provided deeper insights into the
33
34 development of regions over time. To know about these processes is a prerequisite for
35
36 designing appropriate regional innovation policies.
37
38
39
40
41

42
43 For the manufacturers of medical, optical, and precision instruments as well as for
44
45 Electrics and Electronics past growth of patents is associated with subsequent growth of
46
47 employment. For the latter industry there is also a positive relationship between growth
48
49 of patents and later growth of R&D. Disaggregating by size of industry employment
50
51 reveals that in both industries high employment regions benefit more from an increase
52
53 in patents. Prima facie this finding might perhaps be interpreted as in line with a
54
55 'picking the winner' approach as applied in recent contest based innovation policies
56
57 (see, e.g., Eickelpasch and Fritsch, 2005). However, the results still do not strongly
58
59
60

1
2
3
4 suggest that this was a more effective way to achieve economic growth than a
5
6 'levelling-out' strategy.
7

8
9 This is underlined by the results regarding agglomeration economies. Specialisation
10
11 turned out to exert different effects not only in different industries but also in different
12
13 regions and for different employment groups. In the Chemicals as well as in the
14
15 Electrics and Electronics industry specialisation is associated with growth of
16
17 employment. In both cases low employment regions seem to benefit more from a
18
19 specialised industry structure. For manufacturer of transport equipment the opposite
20
21 holds. In this industry specialisation is not related to growth of total employment but
22
23 only to growth of R&D in regions with high industry employment. Hence if at all the
24
25 results suggest that the adequacy of a 'picking the winner' approach crucially depends
26
27 on the respective industry's characteristics and the employment groups addressed.
28
29
30
31

32
33 Moreover, the results show that in the Chemical and for the manufacturers of transport
34
35 equipment growth of employment is associated with subsequent growth of R&D. This
36
37 finding closely matches the firm-level results reported by Coad and Rao (2010).
38
39

40
41 A few limitations of this analysis should be mentioned at this point as well. First of all
42
43 this study does not claim to resolve any issues of causality. The results should rather be
44
45 interpreted as a description of the interrelated processes concerning the growth rates of
46
47 the variables as may be observed during industrial and regional evolution. Since we
48
49 cannot be certain about the causal nature of the relationships, we cannot guarantee that
50
51 an exogenous policy stimulus to one variable will have the expected effects on the other
52
53 variables. Nevertheless previous expectations based on the theoretical and empirical
54
55 literature and the results obtained from this study match rather well.
56
57
58
59
60

1
2
3
4 Regarding the data one has to admit that patent data is not equally suited as an
5
6 innovation indicator for all industries. In the case of the transport equipment industry
7
8 the results support the previous concern that patent applications would not depict the
9
10 industry's innovative activity properly. With respect to the Chemical industry this
11
12 concern does not hold. However, the panel dataset employed seems to be too short in
13
14 order to detect any long-term co-evolutionary dynamics related to innovation in the
15
16 Chemical industry.
17
18
19
20
21
22
23
24
25
26
27
28
29
30
31
32
33
34
35
36
37
38
39
40
41
42
43
44
45
46
47
48
49
50
51
52
53
54
55
56
57
58
59
60

1
2
3
4
5
6
7
8
9
10
11
12
13
14
15
16
17
18
19
20
21
22
23
24
25
26
27
28
29
30
31
32
33
34
35
36
37
38
39
40
41
42
43
44
45
46
47
48
49
50
51
52
53
54
55
56
57
58
59
60

Appendix

TABLE A1 ABOUT HERE

TABLE A2 ABOUT HERE

For Peer Review Only

References

- 1
2
3
4
5
6
7 Acs Z. J., Audretsch D. B. and Feldman M. P. (1992) Real Effects of Academic
8
9 Research: Comment, *The American Economic Review* 82(1), 363-367.
10
11
12 Antonucci T. and Pianta M. (2002) Employment Effects of Product and Process
13
14 Innovation in Europe, *International Review of Applied Economics* 16, 295-308.
15
16
17 Archibugi D. (2001) Pavitt's taxonomy 16 years on: A review article, *Economics of*
18
19 *Innovation and New Technology* 10(5), 415-425.
20
21
22
23 Arndt O. (2000) Innovative Netzwerke als Determinante betrieblicher
24
25 Innovationstätigkeit: Das Beispiel Süd-Wales/UK., Selbstverlag im Wirtschafts-
26
27 und Sozialgeographischen Institut der Universität zu Köln, Köln.
28
29
30
31 Arrow K. J. (1962) The Economic Implications of Learning by Doing, *Review of*
32
33 *Economic Studies* 29, 155-173.
34
35
36 Arundel A. and Kabla I. (1998) What Percentage of Innovations are Patented?
37
38 Empirical Estimates for European Firms, *Research Policy* 27, 127-141.
39
40
41 Audretsch D. B. (1998) Agglomeration and the Location of Innovative Activity, *Oxford*
42
43 *Review of Economic Policy* 14, 18-29.
44
45
46 Audretsch D. B. and Feldman M. P. (1996) R&D Spillovers and the Geography of
47
48 Innovation and Production, *The American Economic Review* 86, 630-640.
49
50
51
52 Bade F.-J. (1987) Regionale Beschäftigungsentwicklung und produktionsorientierte
53
54 Dienstleistungen, Sonderheft 143, Deutsches Institut für Wirtschaftsforschung,
55
56 Berlin.
57
58
59 Beaudry C. and Schiffauerova A. (2009) Who's right, Marshall or Jacobs? The
60
localization versus urbanization debate, *Research Policy* 38, 318-337.

- 1
2
3
4 Brenner T. (2004) *Local Industrial Clusters: Existence, Emergence, and Evolution*,
5
6 Routledge, London.
7
8
9 Brenner T. (2006) An Identification of Local Industrial Clusters in Germany, *Regional*
10
11 *Studies* 40, 991-1004.
12
13
14 Brenner T. and Broekel T. (2009) Methodological Issues in Measuring Innovation
15
16 Performance of Spatial Units, *Papers in Evolutionary Economic Geography* No.
17
18 2009-04, Urban & Regional Research Centre Utrecht, Utrecht University.
19
20
21
22 Brenner T. and Gildner A. (2006) The Long-term Implications of Local Industrial
23
24 Clusters, *European Planning Studies* 14, 1315-1328.
25
26
27 Broekel T. (2007) A Concordance between Industries and Technologies - Matching the
28
29 technological fields of the Patentatlas to the German Industry Classification, *Jena*
30
31 *Economic Research Papers* No. 2007-013, Friedrich Schiller University and Max
32
33 Planck Institute of Economics, Jena.
34
35
36
37 Broekel T. and Binder M. (2007) The Regional Dimension of Knowledge Transfers - A
38
39 Behavioral Approach, *Industry and Innovation* 14, 151-175.
40
41
42 Castaldi C. and Sapio S. (2008) Growing like mushrooms? Sectoral evidence from four
43
44 large European economies. *Journal of Evolutionary Economics* 18 (3), 509-527.
45
46
47
48 Coad A. (2009) *The growth of firms: A survey of theories and empirical evidence*,
49
50 Edward Elgar, Cheltenham.
51
52
53 Coad A. (2010) Exploring the processes of firm growth: evidence from a vector auto-
54
55 regression, *Industrial and Corporate Change*, 1-27, doi:10.1093/icc/dtq018.
56
57
58
59
60

- 1
2
3
4 Coad A. and Rao R. (2007) The Employment Effects of Innovations in High-Tech
5
6 Industries, *Papers on Economics and Evolution* No. 0705, Max Planck Institute of
7
8 Economics, Jena.
9
- 10
11 Coad A. and Rao R. (2010) Firm growth and R&D expenditure, *Economics of*
12
13 *Innovation and New Technology* 19(2), 127-145.
14
- 15
16
17 Cohen W. M., Nelson R. R. and Walsh J. P. (2000) Protecting their Intellectual Assets:
18
19 Appropriability Conditions and why U.S. Manufacturing Firms Patent (or not),
20
21 *NBER Working Paper* No. 7552, National Bureau of Economic Research,
22
23 Cambridge, MA.
24
25
- 26
27 Combes P.-P. (2000) Economic Structure and Local Growth: France, 1984-1993,
28
29 *Journal of Urban Economics* 47, 329-355.
30
- 31
32 Cooke P. (1992) Regional innovation systems: Competitive regulation in the new
33
34 Europe, *Geo-forum* 23, 365-382.
35
36
- 37
38 Cooke P. (2001) Regional Innovation Systems, Clusters, and the Knowledge Economy,
39
40 *Industrial and Corporate Change* 10, 945-974.
41
- 42
43 de Jong J. P. J., Marsili O. (2006) The fruit flies of innovations: A taxonomy of
44
45 innovative small firms, *Research Policy* 35, 213-229.
46
47
- 48
49 de Lucio J. J., Herce J. A. and Goicolea A. (2002) The Effects of Externalities on
50
51 Productivity Growth in Spanish Industries, *Regional Science and Urban*
52
53 *Economics* 32, 241-258.
54
- 55
56 DESTATIS (2002) Klassifikation der Wirtschaftszweige, Ausgabe 2003 (WZ2003),
57
58 Statistisches Bundesamt, Wiesbaden.
59
60

- 1
2
3
4 Doloreux D. (2002) What we should know about regional systems of innovation,
5
6 *Technology in Society* 24, 243-263.
7
8
- 9 Doms M., Dunne T. and Roberts M. J. (1995) The role of technology use in the survival
10
11 and growth of manufacturing plants, *International Journal of Industrial*
12
13 *Organization* 13, 523-542.
14
15
- 16 Dranove D. and Meltzer D. (1994) Do important drugs reach the market sooner?, *The*
17
18 *RAND Journal of Economics* 25, 402-423.
19
20
21
- 22 Eickelpasch A. and Fritsch M. (2005) Contests for cooperation – A new approach in
23
24 German innovation policy, *Research Policy* 34, 1269-1282.
25
26
- 27 Ernst H. (1998) Industrial research as a source of important patents, *Research Policy* 27,
28
29 1-15.
30
31
- 32 Evangelista R. and Savona M. (2003) Innovation, employment and skills in services.
33
34 Firm and sectoral evidence, *Structural Change and Economic Dynamics* 14, 449-
35
36 474.
37
38
39
- 40 Feldman M. P. (1994) *The Geography of Innovation*, Kluwer, Boston.
41
42
- 43 Feldman M. P. and Audretsch D. B. (1999) Innovation in Cities: Science-based
44
45 Diversity, Specialization and Localized Competition, *European Economic Review*
46
47 43, 409-429.
48
49
- 50 Feldman M. P. and Florida R. (1994) The geographic sources of innovation:
51
52 technological infrastructure and product innovation in the United States. *Annals of*
53
54 *the Association of American Geographers* 84, 210-229.
55
56
57
- 58 Frenken K., van Oort F. and Verburg T. (2007) Related Variety, Unrelated Variety and
59
60 Regional Economic Growth, *Regional Studies* 41, 685-697.

- 1
2
3
4 Fritsch, M. and Slavtchev, V. (2008) Determinants of the Efficiency of Regional
5
6 Innovation Systems. *Regional Studies*, DOI:10.1080/00343400802251494.
7
8
9 Giedeman D., Isely P. and G. Simons (2006) Innovation and the Business Cycle: A
10
11 Comparison of the U.S. Semiconductor and Automobile Industries, *International*
12
13 *Advances in Economic Research* 12(2), 277-286.
14
15
16
17 Glaeser E. L., Kallal H., Scheinkman J. and Shleifer A. (1992) Growth in Cities, *Journal*
18
19 *of Political Economy* 100, 1126-1152.
20
21
22 Gomory R. (1992) The technology-product relationship: Early and late stages, in
23
24 Rosenberg N., Landau R. and Mowery D. (Eds) *Technology and the wealth of*
25
26 *nations*, pp. 383-394. Stanford University Press, Palo Alto, CA.
27
28
29
30 Greenan N. and Guellec D. (2000) Technological innovation and employment
31
32 reallocation, *Labour* 14, 547-590.
33
34
35 Greif S. and Schmiedl D. (2002) Patentatlas 2002 Dynamik und Strukturen der
36
37 Erfindungstätigkeit, Deutsches Patent- und Markenamt, München.
38
39
40 Greunz L. (2004) Industrial Structure and Innovation - Evidence from European
41
42 Regions, *Journal of Evolutionary Economics* 14, 563-592.
43
44
45 Griliches Z. (1990) Patent statistics as economic indicators: A survey, *Journal of*
46
47 *Economic Literature* 28, 1661-1707.
48
49
50
51 Hall B. H. (1987) The Relationship Between Firm Size and Firm Growth in the US
52
53 Manufacturing Sector, *The Journal of Industrial Economics* 35, 583-606.
54
55
56 Harrison R., Jaumandreu J., Mairesse J. and Peters B. (2005) Does innovation stimulate
57
58 employment? A firm-level analysis using comparable micro data from four
59
60 European countries, *MPRA Papers*, 1245, Universität München, Munich.

- 1
2
3
4 Henderson V. (1997) Externalities and Industrial Development, *Journal of Urban*
5
6 *Economics* 42, 449-470.
7
8
- 9 Henderson V., Kuncoro A. and Turner M. (1995) Industrial Development in Cities, *The*
10
11 *Journal of Political Economy* 103, 1067-1090.
12
13
- 14 INKAR (2005). Aktuelle Daten zur Entwicklung der Städte, Kreise und Gemeinden,
15
16 CD-Rom, Berichte 8, Volume 14. Bundesministerium für Bauwesen und
17
18 Raumplanung, Berlin.
19
20
- 21
22 Jacobs J. (1970) *The Economy of Cities*, Vintage Books, New York.
23
24
- 25 Jaffe A. B. (1989) Real Effects of Academic Research, *The American Economic Review*
26
27 79, 957-970.
28
29
- 30 Jaffe A. B., Trajtenberg M. and Henderson R. (1993) Geographic Localization of
31
32 Knowledge Spillovers as Evidenced by Patent Citations, *Quarterly Journal of*
33
34 *Economics* 108, 577-598.
35
36
- 37
38 Klepper S. and Thompson P. (2005) Spinoff Entry in High-tech Industries: Motives and
39
40 Consequences, *Working Papers* No. 0503, Department of Economics, Florida
41
42 International University, Miami, FL.
43
44
- 45 Klepper S. and Sleeper S. (2005) Entry by Spinoffs, *Management Science* 51, 1291-
46
47 1306.
48
49
- 50
51 Krugman P. (1991) *Geography and Trade*, MIT Press, Cambridge.
52
53
- 54 Lachenmaier S. and Rottmann H. (2007) Effects of innovation on employment: A
55
56 dynamic panel analysis, *CESIFO Working Papers* No. 2015, Ifo Institute for
57
58 Economic Research, Munich.
59
60

1
2
3
4 Laursen K. (1998) Revealed Comparative Advantage and the Alternatives as Measures
5
6 of International Specialisation, *DRUID Working Papers* No. 98-30, Department of
7
8 Industrial Economics and Strategy, Copenhagen Business School and Department
9
10 of Business Studies, Aalborg University.

11
12
13
14 Lee Y., Amaral L. A. N., Canning D., Meyer M. and Stanley H. E. (1998) Universal
15
16 features in the growth dynamics of complex organizations, *Physical Review*
17
18 *Letters* 1, 3275-3278.

19
20
21
22 Mairesse J. and Mohnen P. (2005) The Importance of R&D for Innovation: A
23
24 Reassessment Using French Survey Data, *Journal of Technology Transfer* 30,
25
26 183-197.

27
28
29
30 Malerba F. and Orsenigo L. (1995) Schumpeterian patterns of innovation, *Cambridge*
31
32 *Journal of Economics* 19, 47-65.

33
34
35
36 Malerba F. and Orsenigo L. (1996) Schumpeterian patterns of innovation are
37
38 technology-specific, *Research Policy* 25, 451-478.

39
40 Marshall A. (1890) *Principles of Economics*, Macmillan, London.

41
42
43
44
45
46
47
48
49
50
51
52
53
54
55
56
57
58
59
60
Neffke F., Svensson Henning M., Boschma R., Lundquist K.-J. and Olander L.-O.
(2008) Who Needs Agglomeration? Varying Agglomeration Externalities and the
Industry Life Cycle, *Papers in Evolutionary Economic Geography* No. 08.08,
Urban & Regional Research Centre Utrecht, Utrecht University.

59
60
Paci R. and Usai S. (1999) The Role of Specialization and Diversity Externalities in the
Agglomeration of Innovative Activity, *Working Paper CRENoS* No. 199915,
University of Cagliari.

- 1
2
3
4 Pavitt K. (1984) Sectoral patterns of technical change: Towards a taxonomy and a
5
6 theory, *Research Policy* 13, 343-373.
7
8
- 9 Peters B. (2004) Employment Effects of Different Innovation Activities:
10
11 Microeconomic Evidence, *ZEW Discussion Paper* No. 04-73, Centre for
12
13 European Economic Research, Mannheim.
14
15
- 16 Pianta M. (2005) Innovation and Employment, in Fagerberg J., Mowery D. C. and
17
18 Nelson R. R. (Eds) *The Oxford Handbook of Innovation*, pp. 568-598, Oxford
19
20 University Press, Oxford, New York.
21
22
23
- 24 Porter M. E. (1990) *The Competitive Advantage of Nations*, Free Press, New York.
25
26
- 27 Romer P. M. (1986) Increasing Returns and Long-Run Growth, *The Journal of Political*
28
29 *Economy* 94, 1002-1037.
30
31
- 32 Rosenthal S. S. and Strange W. C. (2001) The Determinants of Agglomeration, *Journal*
33
34 *of Urban Economics* 50, 191-229.
35
36
- 37 Schmoch U., Laville F., Patel P. and Frietsch R. (2003) Linking Technology Areas to
38
39 Industrial Sectors, *Final Report to the European Commission*, DG Research,
40
41 Karlsruhe, Paris, Brighton.
42
43
44
- 45 Smolny W. (1998) Innovation, prices and employment – a theoretical model and an
46
47 empirical application for West German manufacturing firms, *The Journal of*
48
49 *Industrial Economics* XLVI, 359-381.
50
51
52
- 53 Smolny W. (2002) Employment adjustment at the firm level. A theoretical model and
54
55 empirical investigation for West-German manufacturing firms, *Labour* 16, 65-88.
56
57
58
59
60

1
2
3
4 Spiezia V. and Vivarelli M. (2000) The Analysis of Technological Change and
5
6 Employment, in Vivarelli M. and Pianta M. (Eds) The Employment Impact of
7
8 Innovation – Evidence and Policy, pp. 12-25, Routledge, London, New York.
9

10
11 Stock J. H. and Watson M. W. (2001) Vector autoregressions, *Journal of Economic*
12
13 *Perspectives* 15, 101-115.
14

15
16 van der Panne G. and van Beers C. (2006) On the Marshall-Jacobs Controversy: It
17
18 Takes Two to Tango, *Industrial and Corporate Change* 15, 877-890.
19

20
21 van Reenen J. (1997) Employment and Technological Innovation: Evidence from U.K.
22
23 Manufacturing Firms, *Journal of Labor Economics* 15, 255-284.
24
25
26
27
28
29
30
31
32
33
34
35
36
37
38
39
40
41
42
43
44
45
46
47
48
49
50
51
52
53
54
55
56
57
58
59
60

Tables and Figures

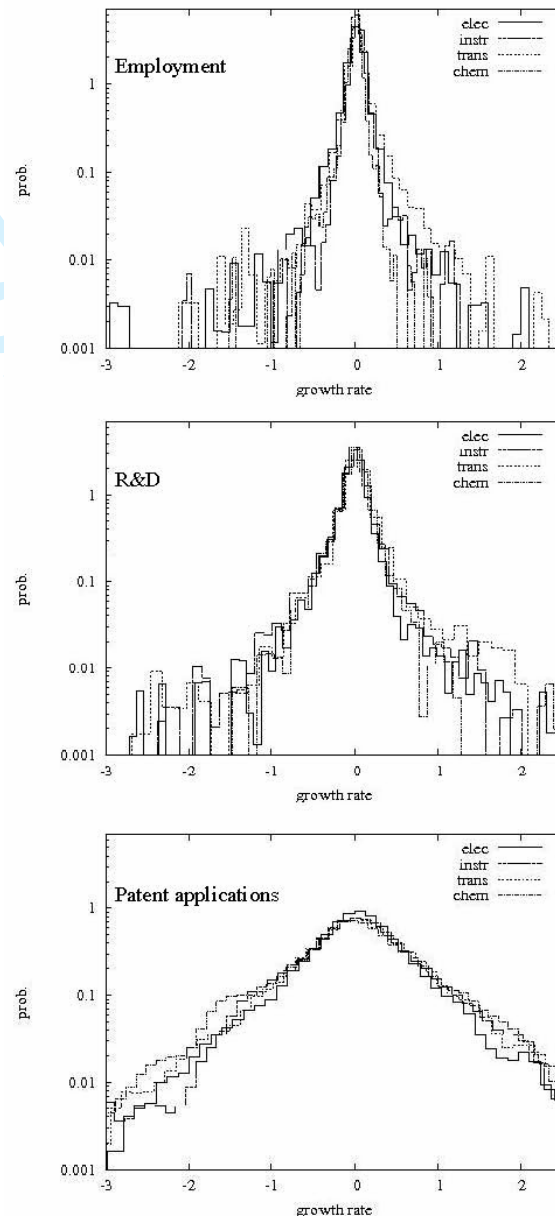


Figure 1: Annual growth rate distributions for regional employment, R&D and patent applications. Growth rates are normalized around zero for each year, and then the years are pooled together. Kernel densities computed using an Epanechnikov kernel.

Sector	Technological fields*	Industries**
CHEM	TF5, TF12, TF13, TF14, TF15	DG24, DI26
ELEC	TF27, TF28, TF29, TF30, TF31	DL30, DL31, DL32
INSTR	TF4, TF16, TF26	DL33, DF23
TRANS	TF10, TF22	DM34, DM35

* As defined in Greif & Schmiedel (2002); ** According to the GIC DESTATIS (2002)

Table 1: Overview technological fields.

For Peer Review Only

	Mean	Std Dev	10%	25%	median	75%	90%	Min	Max	Obs
Chem										
Empl	2793.189	4875.299	323	644	1319	2658	6069	38	49218	270
R&D	146.930	402.685	5.5	14	40.5	112	304.5	0	4408	270
Patents	12.371	38.869	0	0.6	1.9	6.2	27.75	0	382	270
ELEC										
Empl	2421.804	5024.096	107	275	836	2476	5623.5	1	55861	270
R&D	610.819	1405.686	7	42	165	591	1555.5	0	16548	270
Patents	22.240	73.180	0	1.8	6.15	16.8	42.15	0	956.2	270
INSTR										
Empl	1544.874	2729.405	123.5	244	614.5	1593	3517	11	18124	270
R&D	254.207	541.826	2	11	64	193	703.5	0	3731	270
Patents	11.500	28.149	0	1	3.3	11.1	26.25	0	272.3	270
TRANS										
Empl	3014.722	8894.129	30	137	563	1663	7379.5	0	99320	270
R&D	553.537	1994.839	0	5	60	265	1315.5	0	25986	270
Patents	16.632	64.966	0	1.3	4.5	12	32.5	0	951.1	270

Table 2: Summary statistics for the four industries in 1999. The statistics refer to the absolute numbers of total employment, R&D employees and patent applications.

Moran's I	CHEM	ELEC	INSTR	TRANS
R&D	-0.0178	-0.0018	0.0.03*	0.0621***
Pat	0.058**	0.0114**	0.103***	0.0313*
Empl	-0.002	0.0065	0.005	0.085***

*p-value based on Monto-Carlo simulation.

Table 3: Check for spatial autocorrelation.

For Peer Review Only

w_t	β_{t-1}			β_{t-2}			β_{t-3}			spec	div	pop_den	R^2	Obs
	gr_empl	gr_pat	gr_rnd	gr_empl	gr_pat	gr_rnd	gr_empl	gr_pat	gr_rnd					
CHEM														
gr_empl	0.0376	-0.0059	0.0066	0.0883	-0.0013	-0.0179	0.0475	0.0008	-0.0399	0.0167	-0.0002	0.0000	0.0212	562
t-stat	1.48	-1.86	0.83	2.88	-0.40	-1.51	1.58	0.26	-3.35	3.07	-0.04	-0.44		
gr_pat	0.4086	-0.5780	0.0260	0.1264	-0.3237	0.1092	-0.1490	-0.1372	0.1148	0.1012	-0.0838	0.0000	0.1285	547
t-stat	1.08	-12.05	0.21	0.28	-6.48	0.63	-0.33	-3.04	0.65	1.25	-1.05	0.31		
gr_rnd	0.1271	-0.0083	-0.0286	0.0496	0.0026	-0.0321	0.1313	-0.0006	-0.1552	0.0068	0.0041	0.0000	0.0143	562
t-stat	2.22	-1.17	-1.35	0.74	0.35	-1.19	1.95	-0.08	-5.79	0.56	0.35	0.04		
ELEC														
gr_empl	0.0381	0.0237	0.0126	0.0512	0.0254	0.0234	0.0411	0.0117	0.0195	0.0138	-0.0067	0.0000	0.0413	665
t-stat	2.47	4.18	0.91	2.51	4.52	1.60	1.90	2.40	1.39	1.96	-0.86	-2.23		
gr_pat	-0.0635	-0.3727	0.0285	-0.1393	-0.2415	0.1232	0.0878	-0.1427	-0.1276	0.0417	0.0425	0.0000	0.0781	655
t-stat	-0.50	-8.77	0.29	-0.93	-5.76	1.10	0.56	-3.99	-1.22	0.80	0.73	-0.98		
gr_rnd	0.0190	0.0137	0.0338	-0.0046	0.0187	0.0097	0.0273	0.0184	-0.0089	0.0015	-0.0011	0.0000	0.0076	665
t-stat	0.73	1.62	1.70	-0.15	2.24	0.42	0.86	2.54	-0.44	0.14	-0.09	-0.58		
INSTR														
gr_empl	0.0215	0.0047	0.0180	0.0019	0.0111	-0.0093	0.0336	0.0105	0.0055	0.0065	0.0009	0.0000	0.0155	633
t-stat	0.97	1.20	1.68	0.10	2.71	-1.04	1.52	2.99	0.67	0.94	0.15	-1.35		
gr_pat	-0.0315	-0.6058	0.1169	-0.1700	-0.2670	0.0714	0.1078	-0.1490	-0.0677	0.0683	0.0558	0.0000	0.1714	629
t-stat	-0.15	-15.19	1.08	-0.77	-6.46	0.76	0.47	-4.23	-0.80	0.98	0.88	-1.35		
gr_rnd	0.0584	0.0010	0.0126	0.0148	0.0008	0.0206	0.0134	-0.0026	-0.0173	-0.0032	-0.0011	0.0000	0.0050	633
t-stat	1.94	0.18	0.88	0.49	0.14	1.59	0.43	-0.54	-1.47	-0.34	-0.12	-0.36		
TRANS														
gr_empl	0.0395	-0.0088	-0.0123	0.0176	-0.0060	-0.0101	0.0119	0.0022	-0.0051	0.0137	-0.0302	0.0000	0.0189	573
t-stat	3.26	-1.62	-1.07	1.29	-0.98	-1.01	0.98	0.41	-0.67	1.92	-3.18	-0.37		
gr_pat	-0.0612	-0.5605	-0.0308	-0.0484	-0.3715	0.1423	0.0451	-0.2719	-0.0157	-0.0433	0.1205	0.0000	0.1612	569
t-stat	-0.51	-11.24	-0.29	-0.45	-6.57	1.57	0.40	-5.63	-0.20	-0.67	1.39	-1.17		
gr_rnd	0.0541	-0.0074	-0.0055	0.0204	-0.0228	0.0007	0.0666	-0.0071	-0.0054	0.0184	-0.0071	0.0000	0.0115	573
t-stat	2.86	-0.96	-0.33	1.22	-2.64	0.05	3.10	-0.95	-0.45	1.83	-0.53	-1.12		

Table 4: LAD estimation of equation (1) where m=3 and corresponds to the vector (gr_empl (r,t), gr_pat (r,t), gr_rnd (r,t)).

w_t	β_{t-1}			β_{t-2}			β_{t-3}			spec	div	pop_den	R^2	Obs
	gr_empl	gr_pat	gr_rnd	gr_empl	gr_pat	gr_rnd	gr_empl	gr_pat	gr_rnd					
CHEM														
gr_empl	0.0121	-0.0092	0.0064	0.0460	0.0018	-0.0436	0.0259	-0.0004	-0.0570	0.0431	-0.0088	0.0000	0.0525	214
t-stat	0.23	-1.37	0.35	0.75	0.24	-1.92	0.41	-0.07	-2.64	1.96	-0.66	1.27		
gr_pat	0.3067	-0.6667	0.0771	-0.3805	-0.4484	-0.0823	-0.3678	-0.1749	0.3219	0.6498	-0.2414	0.0000	0.1774	202
t-stat	0.52	-10.70	0.58	-0.78	-6.77	-0.40	-0.62	-2.99	1.53	3.15	-1.98	0.41		
gr_rnd	0.0712	-0.0261	-0.0213	0.0648	-0.0006	-0.0548	0.1125	-0.0040	-0.1174	0.0857	-0.0075	0.0000	0.0415	214
t-stat	0.51	-1.70	-0.51	0.47	-0.04	-0.97	0.79	-0.27	-2.28	1.68	-0.24	0.69		
ELEC														
gr_empl	0.0340	0.0176	0.0148	0.0590	0.0229	0.0084	0.0501	0.0077	0.0008	0.0357	0.0132	0.0000	0.0399	401
t-stat	1.49	2.08	0.76	1.87	2.72	0.38	1.39	1.07	0.03	2.14	1.01	-1.21		
gr_pat	-0.1209	-0.3997	0.0456	-0.3459	-0.2634	0.1438	0.0523	-0.1809	-0.3013	0.0725	0.0498	0.0000	0.0869	391
t-stat	-0.81	-7.45	0.39	-1.79	-5.00	1.00	0.24	-4.06	-2.16	0.70	0.62	0.25		
gr_rnd	0.0230	0.0069	-0.0208	0.0677	0.0166	-0.0171	0.1020	0.0185	-0.0333	0.0043	-0.0014	0.0000	0.0100	401
t-stat	0.69	0.60	-0.79	1.61	1.47	-0.55	2.21	1.93	-1.15	0.20	-0.08	0.70		
INSTR														
gr_empl	0.0367	-0.0002	0.0010	0.0145	0.0072	-0.0162	0.0239	0.0081	0.0047	0.0333	0.0065	0.0000	0.0164	424
t-stat	1.03	-0.04	0.07	0.46	1.16	-1.17	0.67	1.56	0.37	2.35	0.59	0.22		
gr_pat	-0.0082	-0.5799	0.0927	-0.3055	-0.2539	0.1461	0.3052	-0.1472	-0.1726	0.1117	0.1107	0.0000	0.1735	420
t-stat	-0.03	-12.60	0.80	-1.27	-5.37	1.42	1.06	-3.75	-1.75	1.03	1.33	-0.64		
gr_rnd	0.0527	0.0044	0.0008	0.0333	0.0013	0.0353	0.0370	-0.0032	-0.0311	0.0230	-0.0079	0.0000	0.0074	424
t-stat	1.31	0.63	0.05	0.92	0.18	2.20	0.88	-0.54	-2.05	1.42	-0.64	0.86		
TRANS														
gr_empl	0.0442	-0.0009	-0.0202	0.0194	0.0026	-0.0114	0.0208	0.0031	-0.0077	0.0237	-0.0414	0.0000	0.0250	362
t-stat	2.98	-0.12	-1.31	1.21	0.30	-0.90	1.11	0.42	-0.76	1.58	-2.84	-0.46		
gr_pat	-0.0363	-0.5876	-0.0507	-0.0604	-0.4157	0.1318	0.1124	-0.2478	-0.1319	0.0970	0.1558	0.0000	0.1777	358
t-stat	-0.41	-12.44	-0.56	-0.67	-7.86	1.70	1.24	-5.35	-1.80	1.05	1.67	0.21		
gr_rnd	0.0749	-0.0061	-0.0186	0.0328	-0.0247	-0.0085	0.0883	-0.0117	-0.0367	0.0152	-0.0019	0.0000	0.0142	362
t-stat	3.90	-0.69	-1.06	1.94	-2.40	-0.56	3.92	-1.31	-2.98	0.85	-0.11	-2.99		

Table A1: LAD estimation of equation (1) for regions with low industry employment.

w_t	β_{t-1}			β_{t-2}			β_{t-3}			spec	div	pop_den	R ²	Obs
	gr_empl	gr_pat	gr_rnd	gr_empl	gr_pat	gr_rnd	gr_empl	gr_pat	gr_rnd					
CHEM														
gr_empl	0.0671	-0.0055	0.0024	0.1146	-0.0089	0.0020	-0.0359	-0.0027	0.0131	0.0016	-0.0028	0.0000	0.0305	348
t-stat	1.43	-0.92	0.10	1.84	-1.52	0.08	-0.58	-0.50	0.48	0.17	-0.33	-0.82		
gr_pat	0.4133	-0.4559	-0.2164	0.6949	-0.2297	0.2942	-0.2031	-0.0900	0.1444	-0.0807	-0.0682	0.0000	0.1255	345
t-stat	0.94	-8.47	-1.12	1.22	-4.15	1.25	-0.36	-1.82	0.58	-0.97	-0.88	-0.38		
gr_rnd	0.0163	-0.0022	0.0377	0.1304	-0.0189	0.0097	0.0798	-0.0047	-0.1030	-0.0084	-0.0111	0.0000	0.0137	348
t-stat	0.24	-0.26	1.12	1.43	-2.20	0.26	0.89	-0.60	-2.58	-0.67	-0.91	0.21		
ELEC														
gr_empl	0.0102	0.0233	0.0217	0.0805	0.0310	-0.0185	0.0362	0.0236	-0.0049	0.0285	-0.0275	0.0000	0.0937	264
t-stat	0.33	2.96	0.71	2.79	3.53	-0.90	1.41	2.94	-0.26	2.81	-2.95	0.10		
gr_pat	0.5194	-0.4181	-0.3119	-0.1156	-0.1991	0.2140	-0.1346	-0.0025	0.2408	0.1151	0.0426	0.0000	0.1093	264
t-stat	2.48	-7.34	-1.51	-0.58	-3.32	1.54	-0.79	-0.05	1.91	1.66	0.69	-0.83		
gr_rnd	-0.0910	0.0495	0.2474	-0.0297	0.0423	-0.0104	-0.0283	0.0359	-0.0072	0.0386	-0.0071	0.0000	0.0561	264
t-stat	-1.29	2.60	3.50	-0.43	2.31	-0.21	-0.50	2.04	-0.18	1.67	-0.35	0.48		
INSTR														
gr_empl	-0.0165	0.0039	0.0349	-0.0522	0.0186	0.0097	0.1434	0.0187	0.0128	0.0112	-0.0063	0.0000	0.0386	209
t-stat	-0.40	0.53	1.20	-1.64	2.15	0.46	3.64	2.22	0.79	0.99	-0.78	0.01		
gr_pat	-1.1539	-0.6993	0.6106	0.0738	-0.2667	0.0832	0.1616	-0.0721	0.0720	0.0430	-0.0590	0.0000	0.2128	209
t-stat	-2.21	-7.25	1.70	0.17	-2.24	0.31	0.30	-0.61	0.30	0.28	-0.52	-0.08		
gr_rnd	-0.0219	-0.0122	0.1500	-0.1051	0.0128	-0.0639	0.1797	0.0059	-0.0022	0.0070	-0.0025	0.0000	0.0313	209
t-stat	-0.47	-1.44	4.53	-2.90	1.26	-2.82	4.11	0.59	-0.12	0.54	-0.27	-0.06		
TRANS														
gr_empl	0.0025	-0.0175	0.0052	-0.0439	-0.0127	-0.0214	0.0473	-0.0033	0.0035	0.0214	-0.0105	0.0000	0.0297	211
t-stat	0.05	-1.73	0.18	-0.58	-1.30	-0.76	0.82	-0.42	0.18	1.59	-0.71	0.29		
gr_pat	0.0772	-0.4683	-0.0648	0.2811	-0.2964	-0.0034	0.4173	-0.1842	0.1959	-0.1269	0.1663	0.0000	0.1767	211
t-stat	0.31	-5.37	-0.31	0.43	-3.24	-0.01	0.83	-2.32	1.12	-1.10	1.31	-0.91		
gr_rnd	-0.0116	-0.0107	0.1120	0.0336	-0.0228	-0.0303	0.1390	-0.0056	0.0073	0.0299	-0.0051	0.0000	0.0316	211
t-stat	-0.35	-1.09	3.89	0.42	-2.20	-1.12	2.25	-0.68	0.34	2.24	-0.35	-1.23		

Table A2: LAD estimation of equation (1) for regions with high industry employment.

Endnotes

¹ Note, however, that Cohen et al. (2000) find higher ratios for product innovations in the car/trucks and autoparts industry. But their results for the much more important process innovations in these industries again are comparable to those by Arundel and Kabla (1998).

² Note however that the industries in the present study are defined broader than the industries in Malerba and Orsenigo (1996).

³ We also investigated the possibility of heterogeneous effects at different quantiles of the conditional distribution of the dependent variable, using quantile regression. This analysis did not yield any remarkable results, however.

⁴ In each case, the generated innovation indicator extracts over 90% of the common variance in R&D and patent levels, and is very highly correlated with each of these two variables.

Peer Review Only