



HAL
open science

Flip-flop kinetics of ropivacaine during continuous epidural infusion influences its accumulation rate

Maria Cusato, Massimo Allegri, Tekla Niebel, Pablo Ingelmo, Monica Broglia, Antonio Braschi, Mario Regazzi

► **To cite this version:**

Maria Cusato, Massimo Allegri, Tekla Niebel, Pablo Ingelmo, Monica Broglia, et al.. Flip-flop kinetics of ropivacaine during continuous epidural infusion influences its accumulation rate. *European Journal of Clinical Pharmacology*, 2010, 67 (4), pp.399-406. 10.1007/s00228-010-0927-x . hal-00642397

HAL Id: hal-00642397

<https://hal.science/hal-00642397>

Submitted on 18 Nov 2011

HAL is a multi-disciplinary open access archive for the deposit and dissemination of scientific research documents, whether they are published or not. The documents may come from teaching and research institutions in France or abroad, or from public or private research centers.

L'archive ouverte pluridisciplinaire **HAL**, est destinée au dépôt et à la diffusion de documents scientifiques de niveau recherche, publiés ou non, émanant des établissements d'enseignement et de recherche français ou étrangers, des laboratoires publics ou privés.

1
2
3
4 **FLIP-FLOP KINETICS OF ROPIVACAINE DURING CONTINUOUS EPIDURAL**
5 **INFUSION INFLUENCES ITS ACCUMULATION RATE**
6
7

8
9 | *Cusato M¹, Allegri M², Niebel T^{2,3}, Ingelmo P⁴, Broglia M¹, Braschi A^{2,5}, Regazzi M.¹*

0
1
2 ¹ Laboratory of Clinical Pharmacokinetics, Foundation IRCCS Policlinico San Matteo,
Pavia, Italy;

3
4 ² Department of Anesthesia and Intensive Care I and Pain Therapy, Foundation IRCCS
5 Policlinico San Matteo, Pavia, Italy;

6
7 ³ Department of Surgical Science– Pavia's University, Pavia, Italy;

8
9 ⁴ First Service of Anesthesia and Intensive Care San Gerardo Hospital Monza (MI) -
0 Department of Experimental Medicine Milan Bicocca's University, Milan, Italy;

1
2
3 ⁵ Department of Resuscitation and Organ Transplantation Surgery Sciences, Section of
4 Anesthesiology and Resuscitation, University of Pavia
5
6
7
8
9
0
1
2
3
4
5
6
7
8
9
0
1
2
3
4
5
6
7
8
9
0
1
2
3
4
5
6
7
8
9
0
1
2
3
4
5
6
7
8
9
0

Correspondence to:

Dr. Mario Regazzi

Head of Laboratory of Clinical Pharmacokinetics

Foundation IRCCS Policlinico San Matteo

P.le Golgi, 2

I - 27100 Pavia

Italy

Tel. +39 0382 503471

Fax +39 0382 422701

e-mail address: regazzim@smatteo.pv.it

Acknowledgements:

This research is supported by a grant of Scientific Direction of Fondazione IRCCS
Policlinico San Matteo, Pavia, Italy.

Abstract

Background

Ropivacaine has an optimal toxicity profile for epidural anesthesia in adults, but there are currently no studies concerning its pharmacokinetics during continuous infusion. The primary objective of this study was to evaluate the pharmacokinetics and safety of ropivacaine in adults during a 48-hours continuous epidural infusion.

Materials and methods

We enrolled 43 adults (ASA I-II) scheduled for major abdominal or urologic surgery with postoperative continuous epidural analgesia with ropivacaine 0.2% (5mL/h) and sufentanil 0.75 µg/mL for 48 hours.

Deleted: 5 mL/h

Ropivacaine blood samples were collected, during continuous epidural infusion, before the bolus and 3, 6, 12, 24, 48, 54, 60 hours after the bolus; plasma concentrations were measured on HPLC-UV. The concentration-time relationship of ropivacaine levels was analyzed using a population pharmacokinetic method based on a mixed-effect-model approach (P-PHARM software).

Results

Mean plasma concentration of ropivacaine at the end of epidural infusion (C_{48h}) was 1.69 µg/mL (0.21-3.8 µg/mL). Mean (range) C_{max} was 1.82 µg/L (0.61-4.0 µg/mL); the area under the plasma concentration curve, $AUC_{(0-60)}$, was 67.48 ± 30.60 µg.h/mL.

Deleted: this level was found at a mean time (t_{max}) of 48 hours (12-60 hours). T

Total plasma ropivacaine concentrations fell mainly within (84%) or below (12%) the range reported to be safe in adults (1.0-3.0 µg/mL). Only 2 patients (5%) reached ropivacaine plasma levels higher than 3 µg/mL, namely 3.8 and 4.0 µg/mL at 48 and 54 hours, respectively. Total ropivacaine concentrations up to 4.0 µg/mL were tolerated during long-term epidural ropivacaine infusion.

Mean clearance for total ropivacaine was 5.33 L/h. Age was the only covariable to significantly reduce clearance variability: $CL_{(L/h)} = 15.04 - 0.148 * \text{age (years)}$. The volume of distribution (V_d) was 92.15 L. The infusion dosing period half-life ($t_{1/2,DP} = 0.693 * V_d/CL$) was 10.8 hours.

Deleted: (CV 22%)

Deleted: (CV 16.4%)

Conclusions

Exposure to ropivacaine during epidural infusion is highly variable. The apparent infusion dosing half-life $t_{1/2,DP}$ is the most appropriate parameter to predict drug

1
2
3
4
5
6
7
8
9
0
1
2
3
4
5
6
7
8
9
0
1
2
3
4
5
6
7
8
9
0
1
2
3
4
5
6
7
8
9
0
1
2
3
4
5
6
7
8
9
0

accumulation upon epidural infusion since it appears to better reflect the interplay interference between volume distribution and absorption rate during the accumulation phase. Prediction of ropivacaine accumulation can be improved by considering patient age.

For Peer Review

Introduction

Ropivacaine (RPV) is a long-acting amide-type local anesthetic with a similar structure to bupivacaine [1]. Many literature studies have demonstrated the clinical efficacy of ropivacaine 0.2% epidural infusion, with only some individual case reports of major side-effects. [2,3,4,5] Although ropivacaine is a safer alternative to bupivacaine, excessive plasma concentrations of ropivacaine can cause severe central nervous system and cardiac toxicity. After epidural administration, both the systemic absorption and the systemic disposition of ropivacaine play an important role in determining the clinical profile and the risk of systemic toxicity. [6,7,8,9]

Formatted: Not Superscript/ Subscript

Formatted: Not Superscript/ Subscript

Formatted: Not Superscript/ Subscript

Ropivacaine calculated terminal half-life is significantly longer after epidural than after intravenous administration. Ropivacaine absorption after epidural administration cannot be derived directly from plasma concentration-time curves because of flip-flop kinetics.

[9,10] The flip-flop model implies slow absorption of ropivacaine from the epidural space into the systemic circulation rate-limits drug elimination. Therefore, when the process of absorption is a limiting factor, the terminal half-life reflects the rate and the extent of absorption and not the elimination process. [10,11] In a system consisting of a series of processes, the decrease in concentrations after administration is discontinued and the time to reach the steady-state depends on the slowest process in the chain. This has implication for designing epidural continuous infusion schedules of ropivacaine, considering the clinical significance of accumulation reaching either toxic or ineffective concentrations.

Formatted: Not Superscript/ Subscript

Formatted: Not Superscript/ Subscript

The primary goal of this study was to evaluate the pharmacokinetics of ropivacaine accumulation in adults receiving continuous epidural analgesia during the first 48 h after major surgery.

Material and methods

After approval from the Ethics Committee of San Matteo Hospital (EudraCT number 2010-019393-32) and written informed consent 49 adult patients, ASA class I-II, scheduled for major abdominal or urological surgery and planned to receive a postoperative epidural infusion after surgery for pain control were enrolled. Exclusion criteria were emergency surgery, coagulopathy, renal, hepatic, neurological or psychiatric diseases, a history of peripheral neuropathies and chronic opioid therapy.

Before anesthesia induction epidural catheter was positioned in sitting position, using the loss resistance technique. In patients scheduled for upper abdominal surgery the epidural catheter was placed between T7-T8 or T9-T10. In patients scheduled for lower abdominal or urologic surgery between T10-T11. General anesthesia was induced with Propofol 2mg/kg, Fentanyl 2 µg/kg, Cisatracurium 0.15 mg/kg, and was maintained with Fentanyl and Sevoflurane 2%. Forty five minutes before the end of surgery patients received an epidural loading dose (RPV 0.2% 5 ml + Sufentanil 10 µg), followed by a second bolus (RPV 0.2% 5 ml) 15 minutes later. At the end of surgery an epidural infusion of Ropivacaine 0.2% plus Sufentanil 0.8 µg/ml was started. Ropivacaine/Sufentanil epidural infusion was constantly delivered at a rate of 5ml/h using an electronic infusion pump during the first 48 hs after surgery.

Patients were evaluated every 6 hours during the first day after surgery and every 12 hours in the second postoperative day. We recorded vital signs (arterial pressure and heart rate), pain according to the Numeric Rate Scale (at rest - NRS - and after movement -mNRS-), analgesic rescue dose (administered if NRS>4), Holmen scale (to assess if there was sensory block), sedation scale and clinical side-effects (nausea, vomiting, itching, hypotension, systemic neurological side effects)

Reagents

RPV was a gift of the Department of Anesthesia and Intensive Care. Phenacetin was purchased from Sigma (St. Louis, MO, USA). All other chemicals and reagents used were of the highest commercially available quality.

Instrumentation

Deleted: Equipment

The HPLC system consisted of Varian Prostar Mod.430 a pump equipped with variable-wavelength UV detector (Varian Prostar Mod.330). Separation was achieved using a reverse-phase C-18 column (250×4.6 mm I.D., particle size 5µm, Hypersil BDS-CPS Analytica, Italy). The mobile phase was acetonitrile-methanol-50mM potassium dihydrogen phosphate (pH=6) (180:160:660, v/v/v) delivered at a flow rate of 1.3 mL/min. Chromatographic separation was performed at laboratory room temperature and monitored at 210nm.

The HPLC method has been validated over the range 0.1-4 µg/mL. The assay was linear over the entire concentration range ($r^2 = 0.99$). Intra- and inter-day precision and accuracy was less than 6%.

The limit of detection (LOD) was 0.050 µg/mL, the limit of quantification (LOQ) was 0.1 µg/mL.

Preparation of Standard solution and standard curves

A standard stock solution (1mg/mL) of drug was prepared in methanol-water (50/50), stored at -20°C and were stable for at least 6 months. Plasma standards and controls were prepared at concentrations of 0.1, 0.2, 0.4, 1.0, 2.0, 4.0 µg/mL and 0.12 (Low), 0.8 (Medium) and 1.6 (High) µg/mL, respectively, by diluting appropriate aliquots of the stock solution with drug-free serum. The calibration curve was obtained by linear regression of the peak-height ratios of ropivacaine to the internal standard and plotting these against the nominal concentration of the drug.

Blood sampling

Blood samples were obtained immediately before bolus drug administration and 3, 6, 12, 24, 48, 54 and 60 h after starting the infusion. Plasma was separated by centrifugation, transferred to clean prelabeled tubes and frozen at -20°C until analysis.

Sample preparation

250 µL of distilled deionized water, 500 µL of dichloromethane and 10 µL phenacetin (10 µg/mL, I.S.) were added to 250 µL of plasma. After vortex mixing for 3 minutes, the tubes were centrifuged at 1200g for 10 min. The organic phase was transferred into a clean conical tube and evaporated to dryness under a gentle nitrogen stream. The residue was dissolved in 200 µL mobile phase and 50 µL was injected into HPLC.

Deleted: equipment

Deleted: a pump (

Deleted:)

Deleted: and a

Deleted: C₁₈

Deleted:

Deleted: y

Formatted: Font: (Default) Arial, Not Bold

Deleted: KH₂PO₄

Formatted: Not Superscript/ Subscript

Formatted: Not Superscript/ Subscript

Deleted: and

Deleted: the

Deleted: was

Deleted:

Deleted: and

Deleted: for at least 6 months

Deleted: .

Pharmacokinetic analysis

The concentration-time relationship of ropivacaine levels (corresponding to 6 data points) during an epidural infusion preceded by 2 sequential boluses was analyzed using a population pharmacokinetic method based on a mixed-effect-model approach. This method separates explicitly the variability of drug concentrations in the population into two parts: interindividual variability characterized by the distribution of pharmacokinetic parameters in the population and residual variability (e.g., measurement errors). A parametric approach [12,13] was used (using the P-PHARM software, which is now incorporated into the Innaphase Kinetica suite) to estimate the mean and interindividual variance of each pharmacokinetic parameter in the population, to calculate the Bayesian maximum a posteriori estimates of individual pharmacokinetic parameters, and to test the relationships between these individual estimates and several covariates (gender, age, body weight, height, renal and hepatic function indices). During covariate modeling, P-PHARM can automatically search for a linear relationship between covariates and the population parameter estimates.

Pharmacokinetic data were fitted with different compartmental models. The most appropriate model was chosen based on the Akaike information criterion [12] and the examination of residual plots. A one-compartment model with sequential bolus and infusion inputs was fitted to the total plasma ropivacaine concentration-time data.

The plasma concentration versus time curve of ropivacaine during continuous epidural infusion (R_0 : rate of epidural infusion) was described by the equation:

$$C = (R_0/CL) \cdot (1 - e^{-\lambda_{DP} \cdot t})$$

λ_{DP} indicates the "mixed" (absorption/distribution/elimination) rate constant of ropivacaine observed during 48-hour epidural drug administration and calculated by the CL/V_d ratio. $t_{1/2,DP}$ was defined as the $0.693/\lambda_{DP}$ ratio and represents the infusion dosing half-life.

Ropivacaine pharmacokinetic starting estimates for the population analysis were obtained from previous studies. A heteroscedastic error variance (1/Y) model was used to describe residual error, and a log-normal distribution was used to describe

Formatted: Not Superscript/
Subscript

Formatted: Not Superscript/
Subscript

Deleted:

interpatient variability in apparent clearance (CL) and apparent volume of distribution (Vd).

When bioavailability (F) is not known, estimates of CL should be related to F, *i.e.*, CL/F. Bioavailability was fixed to 1, assuming total (100%) absorption after epidural administration. Model evaluation was conducted as recommended in the P-PHARM manual and also by examination of a plot of measured/predicted concentration data versus time.

Deleted: validation

After the end of infusion, the terminal rate constant ($\lambda_{\text{terminal}}$) was determined for total ropivacaine by linear regression of the last 3 data points on the plasma concentration-time curve (from the 48th hour to the 60th hour):

$$C' = C_{48h} \cdot e^{-\lambda_{\text{terminal}} \cdot t'}$$

$t_{1/2, \text{terminal}}$ was defined as the $0.693/\lambda_{\text{terminal}}$ ratio and represents the terminal half-life after the infusion is stopped. t' is the time since the end of the infusion.

The area under the plasma concentration time curve was calculated by numeric integration using the linear trapezoidal rule. C_{max} was the highest concentration achieved; the time to C_{max} and the plasma concentrations at 3, 6, 12, 24, 48, 54 and 60 h after starting ropivacaine administration (C_{3h} , C_{6h} , C_{12h} , C_{24h} , C_{48h} , C_{54h} , C_{60h} , respectively) were derived directly from ropivacaine levels.

Statistical analysis

Patient characteristics are summarized as median values (range). Total plasma ropivacaine concentrations and derived pharmacokinetic data are summarized as geometric mean (geometric coefficient of variation, CV%) and/or mean (\pm SD) values. Multiple-linear regression analysis with stepwise inclusion between maximum *a posteriori* estimates of all pharmacokinetic parameters and all covariates was performed with the analysis of variance to determine the relevant relationships (with the P-PHARM software). [12] A value of $P < 0.05$ was considered significant.

Formatted: Not Superscript/ Subscript

Deleted:

Results

Forty-nine adults consecutive were enrolled and six were excluded after discontinuation of epidural continuous infusion because of clinical or hemodynamic problems not related to ropivacaine epidural infusion; data collection was incomplete in one other patient, whose data were nevertheless included in our PK analysis. Forty-three patients completed the analysis.

Deleted: 1

Thirty-five patients underwent major abdominal surgery and eight underwent urological surgery (29 males and 14 females). Patient age ranged from 41 to 83 years (median=63 years) and body weight ranged from 50 to 100 kg (median= 75.5 kg).

Analgesia was satisfactory in all cases and there were no cardiocirculatory side-effects, such as major hypotension or arrhythmia, which could require discontinuation of the epidural infusion. There were no minor (facial dyesthesia, tinnitus, changes in sensitivity and strength) or major (convulsions, hallucinations) neurological complications during continuous epidural infusion of ropivacaine.

A total of 330 plasma concentrations from 43 patients were used to compute pharmacokinetic parameters including a baseline sample, four samples collected during ropivacaine infusion and three samples collected during the first 12 h after ropivacaine infusion discontinuation.

Pharmacokinetic data (geometric mean and geometric coefficient of variation, CV%) are summarized in Table I.

During the epidural infusion (ropivacaine 10mg/h) preceded by 2 sequential boluses of 10 mg each, plasma concentrations of ropivacaine leveled off, as expected. Exposure to ropivacaine during epidural infusion was highly variable.

The plasma concentration of ropivacaine at the end of epidural infusion (C_{48h}) was $1.60 \pm 0.89 \mu\text{g/mL}$. After 12 hours and 24 hours, respectively, ~50% and ~75% of the 48-hour level of ropivacaine were reached. C_{max} was $1.82 \pm 0.89 \mu\text{g/L}$ and was observed at a mean time (t_{max}) of 48 hours.

Total plasma ropivacaine concentrations were mainly within (84%) or below (12%) the range reported to be safe in adults (1.0–3.00 $\mu\text{g/mL}$). [5,6, 9, 14,15,16]. Only 2 patients (5%) reached ropivacaine plasma levels higher than 3.0 $\mu\text{g/mL}$, namely 3.8 and 4.0

Formatted: Not Superscript/ Subscript

Deleted:

1
2
3 µg/mL at 48 and 54 hours, respectively. Total ropivacaine concentrations up to 4.0
4 µg/mL were tolerated during long-term epidural ropivacaine infusion.

Deleted: u

5
6 Figure 1 shows all the measured plasma ropivacaine concentrations and the drug
7 concentration-time curve resulting from the average population parameters estimated
8 with P-Pharm.

9
0 Estimated population characteristics of the kinetic parameters together for ropivacaine
1 clearance (CL) and the apparent volume of distribution (Vd) with their coefficient of
2 variation are presented in Table II.

3
4
5 The dosing period absorption/distribution/elimination rate constant of ropivacaine
6 calculated by the average population parameters ($\lambda_{DP} = CL/Vd$) was $0.064h^{-1}$ and the
7 corresponding $t_{1/2,DP} = (0.693 \cdot Vd)/CL = 10.8$ hours.

Deleted: The population geometric mean estimates for ropivacaine clearance (CL) and the Vd were 5.33 L/h and 92.15 L, respectively. The estimated interpatient variability (expressed as a coefficient of variation) in ropivacaine clearance and volume of distribution was 21.7% and 16.4%, respectively. ¶

8 Following the end of epidural infusion of ropivacaine, the terminal half-life ($t_{1/2,terminal}$),
9 determined for total ropivacaine by linear regression of the last 3 data points on the
0 plasma concentration-time curve was 7.4 hours.

1
2 The pharmacokinetic population parameters were subsequently used to fit the
3 concentration data up to 48 h using the Bayesian estimation method. This procedure
4 enables the estimation of individual pharmacokinetic parameters for ropivacaine. The
5 individual posterior Bayesian estimates of ropivacaine pharmacokinetic parameters
6 were generated using a maximum *a posteriori* probability Bayesian fitting procedure.^{23]}

7
8 The performance of individualized Bayesian estimation steps is shown in the plots of
9 the observed versus estimated plasma concentrations in Figure 2, and by the
0 frequency distribution histogram of the normalized residuals which revealed a
1 distribution very close to the expected one (normal with zero mean and unitary
2 variance).

3
4 Through covariate analysis, we found that age was the only independent predictor
5 identified.

6
7 In fact, the stepwise inclusion performed on P-PHARM revealed an age effect on CL,
8 which explains 39.8% of the interindividual variability of the population pharmacokinetic
9 parameters. Ropivacaine clearance correlated inversely with age. The linear correlation
0 between age and ropivacaine clearance was best described by the equation (least
1 square regression; $r = 0.63$, $p < 0.001$):

1
2
3
4
5
6
7
8
9
0
1
2
3
4
5
6
7
8
9
0
1
2
3
4
5
6
7
8
9
0
1
2
3
4
5
6
7
8
9
0
1
2
3
4
5
6
7
8
9
0

$$CL (L/h) = 14.9 - 0.15 \cdot \text{age (years)}$$

For Peer Review

Discussion

Pharmacokinetic of epidural ropivacaine was well described after single dose, but it was important to detect what it can happen during continuous infusion. Whereby we investigated which kind of kinetic we have during epidural continuous infusion and if there are predictors that can determine a change in the pharmacokinetic profile.

In fact, plasma concentration profiles and the potential risk of systemic toxicity after epidural administration of ropivacaine depends on the administered dose and the interaction between the rate processes involved in drug absorption and systemic disposition. [2,16,17,18,19] Unfortunately, absorption and disposition kinetics cannot be derived directly from the plasma concentration–time profile, since local anesthetics exhibit flip-flop kinetics after epidural administration. In a system consisting of a series of processes or compartments, not only the decrease in the concentrations after stopping administration but also the time to reach steady-state depend on the slowest process in the chain.

Half-life is the most clinically relevant pharmacokinetic parameter to predict drug accumulation time in a patient upon constant rate administration. Problems arise when we have to pick the half-life upon which to calculate drug accumulation. Also, when estimating the time for the epidural administration to achieve steady-state, we have to decide if we should work with the actual elimination half-life of ropivacaine obtained from the PK of the intravenous formulation ($t_{1/2,IV}$), consider the terminal half-life calculated after the end of the infusion ($t_{1/2,terminal}$), or take into account the “mixed” absorption/distribution/elimination half-life estimated during the epidural infusion ($t_{1/2,DP}$).

When the process of absorption is not a limiting factor, half-life is a hybrid parameter controlled by plasma clearance and extent of distribution. When the process of absorption is a limiting factor, the terminal half-life reflects mainly the rate and extent of absorption and not the elimination process (flip-flop pharmacokinetics). [20] Our data indicate that the true half-life of ropivacaine, as reported after IV administration ($t_{1/2,IV}$ 1.8 ± 0.7 hours) [21], is irrelevant to the time to reach steady-state.

Formatted: Not Superscript/
Subscript

Formatted: Not Superscript/
Subscript

Formatted: Not Superscript/
Subscript

1
2
3 In order to predict drug accumulation upon epidural infusion dosing, it is more
4 appropriate to use the apparent infusion dosing half-life $t_{1/2,DP}$ since this parameter
5 appears to better reflect the interplay interference between volume distribution and
6 absorption rate during the accumulation phase. Our data indicate that this infusion
7 dosing period half-life ($t_{1/2,DP} = 10.8$ hours) was higher ($\uparrow 45\%$) than the terminal half-life
8 ($t_{1/2,terminal} = 7.4$ hours); a more pronounced sensitivity of the $t_{1/2,DP}$ to the absorption rate
9 process probably explains the difference. This difference seems to confirm the
0 indication by Sahin and Benet [22] to avoid the acritical use of a drug's terminal half-life
1 to predict the drug's accumulation rate.

Formatted: Not Superscript/
Subscript

2
3 A one-compartment model with zero-order input and first-order elimination was optimal
4 for describing the data in the accumulation phase during epidural infusion of
5 ropivacaine. The same model was used by Hansen et al. [16] to describe the trend of
6 ropivacaine concentrations during the accumulation phase in pediatric patients (mean
7 age: 3.3 years, range: 0.3-7.3 years) under continuous epidural infusion. In the majority
8 of children ropivacaine concentrations had reached the steady-state within 36 hours
9 and the half life ($t_{1/2,DP}$) of total ropivacaine was 4.9 hours. The apparent total clearance
0 (0.51L/h/kg) and the apparent volume of distribution (3.1L/kg) were about six and three
1 times the values obtained in our adult patients, respectively. The pharmacokinetic
2 parameters obtained in our study from data following continuous epidural infusion are
3 different from the corresponding values reported after IV administration (V_d : 88.8L vs.
4 41.7L, CL : 5.7L/h vs. 23.2L/h) in adult patients. On the other hand, the final parameters
5 of ropivacaine obtained by a population pharmacokinetic analysis [23] (NONMEN) after
6 loco-regional administration as an anesthetic in hip or knee replacement surgery were
7 quite similar: the apparent clearance was 3.5L/h and the volume of distribution was
8 65.3L. When evaluating the individual pharmacokinetic parameters, though, we must
9 keep in mind that modeling is always dangerous if no IV data are available, because
0 we may get a good fit of data to our equations but the parameters are hybridized and
1 therefore incorrect. It has been underlined that when one models with sums of
2 exponentials, one can simply assume consistency (best to assume this for the equation
3 and not the model). Thus, good fits do not validate our model but only indicate
4 consistency. In most cases, like this one, it is not strictly necessary to assume

Formatted: Not Superscript/
Subscript

Formatted: Not Superscript/
Subscript

1
2
3
4
5
6
7
8
9
0
1
2
3
4
5
6
7
8
9
0
1
2
3
4
5
6
7
8
9
0
1
2
3
4
5
6
7
8
9
0
1
2
3
4
5
6
7
8
9
0

validation [20]. Modeling with sums of exponentials is feasible, as long as the results are reported in terms of macroscopic parameters (coefficients and exponents) and model-independent parameters, such as mean systemic or oral clearance, which is always dose over AUC (Table II).

Formatted: Not Superscript/ Subscript

For a drug such as ropivacaine, the time to reach the steady-state may be influenced by the absorption rate (if administered by extravascular route), by the volume of distribution and by clearance; however, mean steady-state concentration depends only on clearance. Also, it is well recognized that clearance (divided by bioavailability) defines the appropriate rate of administration of a particular drug through the relationship: $R_0 = CL \cdot C_{ss,ave} \cdot F$. For ropivacaine (10 mg/hour), a drug following linear kinetics, the predicted concentration at steady-state, $C_{ss,ave}$, based on individual *a posteriori* Bayesian estimates of ropivacaine pharmacokinetic clearance resulted in a mean value of $2.0 (\pm 0.62) \mu\text{g/mL}$. At the end of infusion (48 h after the start of treatment) the ropivacaine plasma levels achieved corresponded on average to ~ 90% of the levels that would be achieved at the steady-state.

Formatted: Font color: Auto

Our data showed that prediction of ropivacaine accumulation can be improved by considering patient age. After epidural infusion, a trend towards a lower total plasma clearance with increasing age was observed (Fig.3). Simon et al. [24] studied the influence of age on pharmacokinetics of ropivacaine after single epidural administration and reported similar results: clearance is significantly decreased in the oldest patients relative to the youngest ones. In our study we confirmed that also during continuous infusion there is an inversely correlation between age and clearance. In fact RPV clearance in a 40-year-old individual is about twice as high as in a 70-year-old subject. As ropivacaine is extensively metabolized in the liver [8], the age dependence in clearance may presumably reflect decreased enzyme activity.

Deleted:

Formatted: Not Superscript/ Subscript

Deleted:

Deleted: results,

Deleted: that

Deleted: a

Deleted: clearance

Deleted:

Formatted: Not Superscript/ Subscript

Studies during prolonged epidural infusion of ropivacaine showed that postoperative increases in plasma α_1 -acid glycoprotein concentrations are associated with increases in the plasma protein binding and in the total plasma concentrations of ropivacaine. Ropivacaine total clearance depends on liver enzyme activity and on the

1
2
3 free drug fraction in plasma ($CL \sim CL_i * f_u$; CL_i = drug intrinsic clearance, f_u : unbound
4 drug fraction), while the clearance of the unbound drug depends solely on enzyme
5 activity. [25,26] Therefore, changes in the fraction bound to proteins (alpha₁-acid
6 glycoprotein) may affect the drug's total clearance but might also alter the relationship
7
8 between total drug concentration and possible toxic effects. [26,27,28] We did not
9
0 measure alpha₁-acid glycoprotein concentrations and to some extent this is a limitation
1
2 of our study. However, the postoperative course of the patients included in our trial did
3
4 not exhibit any pathophysiological changes other than those expected in patients
5
6 undergoing this type of surgical procedure.

7
8 In conclusion, we demonstrate that during continuous epidural infusion of ropivacaine
9
0 there is a flip flop kinetic and that we have to avoid the acritical use of a drug's terminal
1
2 half-life to predict the drug's accumulation rate. Furthermore, we found an equation that
3
4 could correlate the ropivacaine clearance to age also during epidural continuous
5
6 infusion. It will be necessary to perform other trials in order to improve ropivacaine
7
8 dosage individualization on the basis of pharmacokinetic data of patients.

Formatted: Not Superscript/
Subscript

Formatted: Not Superscript/
Subscript

Deleted:

Deleted:

Review

1
2
3
4
5
6
7
8
9
0
1
2
3
4
5
6
7
8
9
0
1
2
3
4
5
6
7
8
9
0
1
2
3
4
5
6
7
8
9
0

References

1. McClellan KJ, Faulds D. Ropivacaine: an update of its use in regional anaesthesia. *Drugs* 2000; 60: 1065-93.
2. Allegri M, Delazzo MG, Grossi P, Borghi B. Efficacy of drugs in regional anesthesia: A review. *Eu J Pain* 2009; 3(2): 41-8.
3. Mather LE, Chang DH. Cardiotoxicity with modern local anaesthetics: is there a safer choice? *Drugs* 2001; 61: 333-42.
4. Groban L, Deal DD, Vernon JC, James RL, Butterworth J. Cardiac resuscitation after incremental overdosage with lidocaine, bupivacaine, and ropivacaine in anesthetized dogs. *Anesth Analg* 2001; 92: 37-43.
5. Knudsen K, Beckmann Suurkula M, Blomberg S, Sjövall J, Edvardsson N. Central nervous and cardiovascular effects of i.v. infusions of ropivacaine, bupivacaine and placebo in volunteers. *Br J Anaesth* 1997; 78: 507-14.
6. Scott DB, Lee A, Fagan D, Bowler GMR, Bloomfield P, Lundh R. Acute toxicity of ropivacaine compared with that of bupivacaine. *Anesth Analg* 1989; 69: 563-9.
7. Knudsen K, Beckman M, Suurkula M, Blomberg S, Sjövall J, Edvardsson N: Central nervous and cardiovascular effects of i.v. infusions of ropivacaine, bupivacaine and placebo in volunteers. *Br J Anaesth* 1997; 78:507–14.
8. Jokinen MJ. The pharmacokinetics of ropivacaine in hepatic and renal insufficiency. *Best Practice Research Clinical Anaesthesiol* 2005; 19(2): 269-74.
9. Erichsen CJ, Sjoval J, Kehlet H, hedlund C, Arvidsson T. Pharmacokinetics and analgesic effect of ropivacaine during continous epidural infusion for postoperative pain relief. *Anesthesiology* 1996; 84(4): 834-42.
10. Lee A, Fagan D, Lamont M, Tucker GT, Halldin M, Scott DB: Disposition kinetics of ropivacaine in humans. *Anesth Analg* 1989; 69: 736–8.
11. Emanuelsson B-MK, Persson J, Alm C, Heller A, Gustafsson LL. Systemic absorption and block after epidural injection of ropivacaine in healthy volunteers. *Anesthesiology* 1997; 87: 1309-17.
12. SIMED P-PHARM user's guide. SIMED, Creteil, France 17, 1994.
13. Mentre F, Mallet A. Handling covariates in population pharmacokinetics. *Int J Biomed Comput* 1994; 36: 25–33.
14. Morton CPJ, Bloomfield S, Magnusson A, Jozwiak A, McClure JH. Ropivacaine 0.75% for extradural anaesthesia in elective caesarean section: an open clinical and pharmacokinetic study in mother and neonate. *Br J Anaesth* 1997; 79(1): 3-8.

Formatted: English (U.S.)

Formatted: English (U.S.)

15. Emanuelsson B-MK, Persson J, Sandin S, Alm C, Gustafsson LL. Intraindividual and interindividual variability in the disposition of the local anesthetic ropivacaine in healthy subjects. *Therap Drug Monitor* 1997; 19: 126-31.
16. Hansen TG, Ilett KF, Lim SI, Reid C, Hackett LP, Bergesio R. Pharmacokinetics and clinical efficacy of long-term epidural ropivacaine infusion in children. *Br J Anaesth* 2000; 85: 347-53.
17. Emanuelsson B-MK, Zaric D, Nydahl PA, Axelsson K. Pharmacokinetics of ropivacaine and bupivacaine during 21 hours of continuous epidural infusion in healthy male volunteers. *Anesth Analg*; 1995; 81: 1163-8.
18. Halldin MM, Bredberg E, Angelin B, Arvidsson T, Askemark Y, Elofsson S, Widman M. Metabolism and excretion of ropivacaine in humans. *Drug Metab Dispos* 1996; 24: 962-8.
19. Helton SH, Denson DD. Pharmacodynamics and pharmacokinetics of epidural ropivacaine in humans. *Anesth Analg* 1990; 70: 16-21.
20. PharmPK Discussion-Steady state and long half-life. PharmPK Discussion List Archive – PK2006542.html-2006.
21. Habre W, Bergesio R, Johnson C, Hackett P, Joyce D, Sims C. Pharmacokinetics of ropivacaine following caudal analgesia in children. *Paediatr Anaesth* 2000; 10: 143-7.
22. Sahin S, Benet LZ. The operational multiple dosing half-life: a key to defining drug accumulation in patients and to designing extended release dosage forms. *Pharmaceutical Research* 2008; 25(12): 2869-77.
23. Nicòlas J, Oltra D, Navarro-Fontestad C, Nicòlas N, Ramirez F, Alòs M, Casabo VG. Population pharmacokinetics of ropivacaine and bupivacaine after loco-regional administration as anesthetic in hip or knee replacement surgery. Annual Meeting of the Population Approach Group in Europe 2009;. Abstr 1571.
24. Simon MJG, Veering BT, Stienstra R, Van Kleef JW, Burm AGL. The effects of age on neural blockade and hemodynamic changes after epidural anesthesia with ropivacaine. *Anesth Analg* 2002; 94: 1325-30.
25. MacKichan JJ. Influence of protein binding and use of unbound (free) drug concentrations. *Applied Pharmacokinetics- Principles of Therapeutic Drug Monitoring*. In *Applied Therapeutics III* edition 1992; Chapter 5.
26. Wiedemann D, Mühlnickel B, Staroske E, Neumann W, Röse R. Ropivacaine plasma concentrations during 120-hour epidural infusion. *Br J Anaesth*. 2000; 85(6): 830-5.
27. Hansen TG, Ilett KF, Reid C, Lim SI, Hackett LP, Bergesio R. Caudal ropivacaine in infants: population pharmacokinetics and plasma concentrations. *Anesthesiology* 2001; 94: 579-84.
28. Bleckner LL, Bina S, Kwon KH, McKnight G, Dragovich A, Buckenmaier CC. Serum Ropivacaine Concentrations and Systemic Local Anesthetic Toxicity in

Trauma Patients Receiving Long-Term Continuous Peripheral Nerve Block
Catheters. Anesth Analg 2010; 110: 630-4.

For Peer Review

1
2
3
4
5
6
7
8
9
0
1
2
3
4
5
6
7
8
9
0
1
2
3
4
5
6
7
8
9
0
1
2
3
4
5
6
7
8
9
0
1
2
3
4
5
6
7
8
9
0

Table I. Total plasma ropivacaine concentrations (geometric mean, geometric coefficient of variation (%)) at different time points during epidural infusion (ropivacaine 10mg/h) preceded by 2 sequential boluses of 10 mg each.

PK parameter	Unit	Geometric Mean	Geometric coefficient of variation (%)
C_{0h}	$\mu\text{g/mL}$	0.00	0.00
C_{3h}	$\mu\text{g/mL}$	0.40	87.7
C_{6h}	$\mu\text{g/mL}$	0.59	56.1
C_{12h}	$\mu\text{g/mL}$	0.88	31.5
C_{24h}	$\mu\text{g/mL}$	1.22	20.6
C_{48h}	$\mu\text{g/mL}$	1.60	3.1
C_{54h}	$\mu\text{g/mL}$	0.81	8.5
C_{60h}	$\mu\text{g/mL}$	0.56	39.5
C_{3h}/C_{48h}	-	0.25	28.3
C_{12h}/C_{48h}	-	0.55	10.2
C_{24h}/C_{48h}	-	0.76	6.6
C_{max}	$\mu\text{g/mL}$	1.82	2.9
t_{max}	hours	43	2.4
$\text{AUC}_{(0-60h)}$	$\mu\text{g.h/mL}$	67.48	2.2
$\text{CL}=(D/\text{AUC}_{\text{tot}})$	L/h	6.96	8.6

Table II – Ropivacaine population pharmacokinetic results

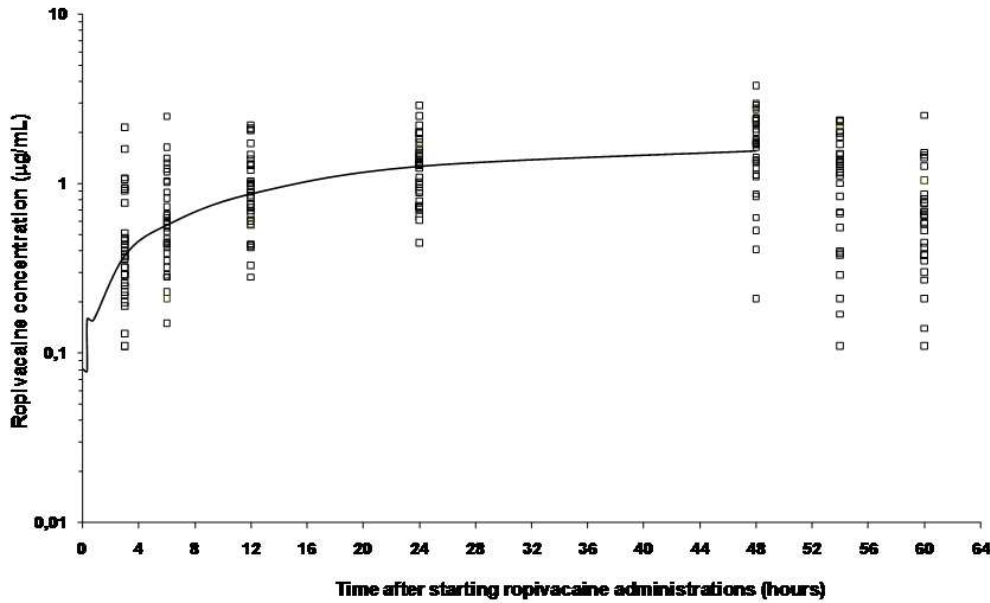
Parameter	Unit	Mean	Percent Coefficient of Variation
Apparent Clearance (CL/F)	L/h	5.33	21.69
Apparent Volume of Distribution (Vd/F)	L	92.15	16.42

Values are mean (percent coefficient of variation)

For Peer Review

1
2
3
4
5
6
7
8
9
0
1
2
3
4
5
6
7
8
9
0
1
2
3
4
5
6
7
8
9
0
1
2
3
4
5
6
7
8
9
0
1
2
3
4
5
6
7
8
9
0

1
2
3
4
5
6
7
8
9
10
11
12
13
14
15
16
17
18
19
20
21
22
23
24
25
26
27
28
29
30
31
32
33
34
35
36
37
38
39
40
41
42
43
44
45
46
47
48
49
50
51
52
53
54
55
56
57
58
59
60



Deleted: ¶

Figure 1. Total plasma ropivacaine concentration *versus* time during and after an epidural continuous infusion of 10mg/hour preceded by 2 sequential epidural boluses. The solid line shows the computer-generated line of the best fit up to 48 h, for a one-compartment model with zero-order input and first-order elimination.

Deleted:

Formatted: Justified

Deleted:

Formatted: English (U.S.)

Deleted: ¶

¶

Deleted: ¶

¶

¶

¶

¶

Deleted: Figure 1. Total plasma ropivacaine concentration *versus* time during and after an epidural continuous infusion of 10mg/hour preceded by 2 sequential epidural boluses. The solid line shows the computer-generated line of the best fit up to 48 h, for a one-compartment model with zero-order input and first-order elimination.

¶

¶

¶

¶

¶

¶

¶

¶

¶

¶

¶

¶

¶

¶

¶

¶

¶

¶

¶

¶

¶

¶

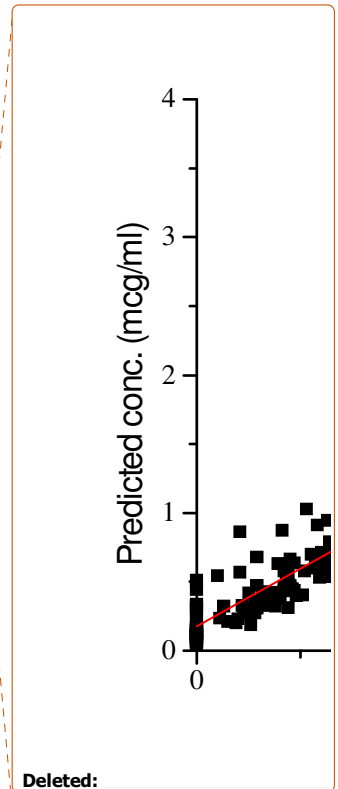
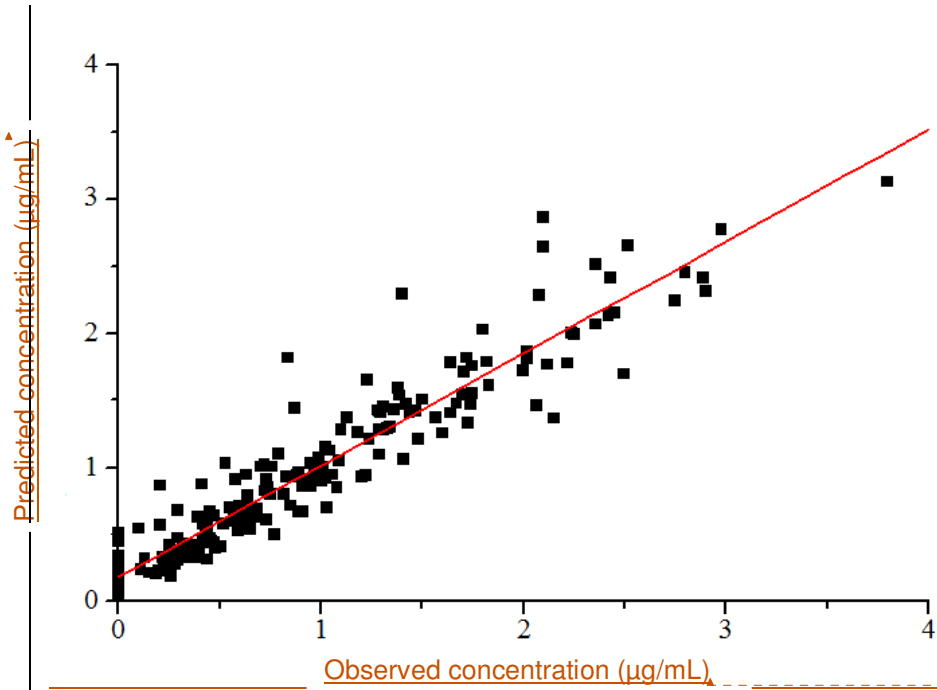


Figure 2. Scatterplot of estimated versus measured serum concentrations, in micrograms per milliliter, based on individual patient Bayesian posteriori parameter distributions. Pooled data of all 43 patients.

- Deleted:**
- Formatted:** Italian (Italy)
- Formatted:** Italian (Italy)
- Formatted:** Justified
- Deleted:** medians of
- Formatted:** English (U.S.)

Peer Review

1
2
3
4
5
6
7
8
9
0
1
2
3
4
5
6
7
8
9
0
1
2
3
4
5
6
7
8
9
0
1
2
3
4
5
6
7
8
9
0

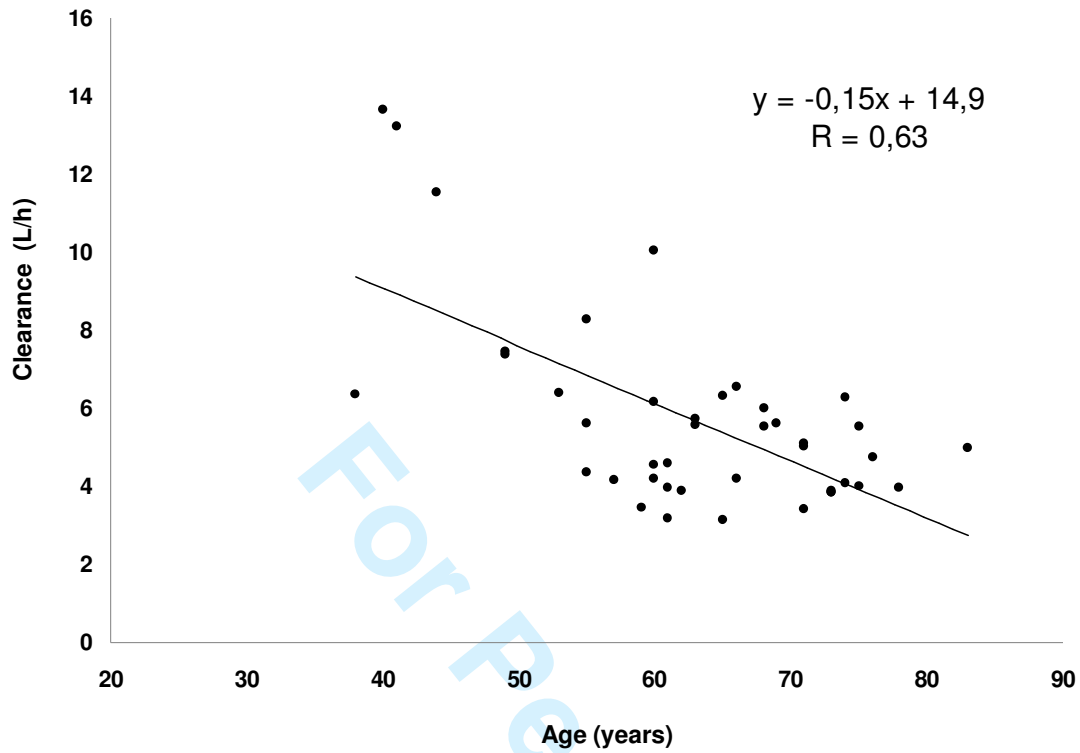


Fig 3. Relationship between ropivacaine total clearance (L/h) and age (years)

FLIP-FLOP KINETICS OF ROPIVACAINE DURING CONTINUOUS EPIDURAL INFUSION INFLUENCES ITS ACCUMULATION RATE

Cusato M¹, Allegri M², Niebel T^{2,3}, Ingelmo P⁴, Broglia M¹, Braschi A^{2,5}, Regazzi M.¹

¹ Laboratory of Clinical Pharmacokinetics, Foundation IRCCS Policlinico San Matteo, Pavia, Italy;

² Department of Anesthesia and Intensive Care I and Pain Therapy, Foundation IRCCS Policlinico San Matteo, Pavia, Italy;

³ Department of Surgical Science– Pavia's University, Pavia, Italy;

⁴ First Service of Anesthesia and Intensive Care San Gerardo Hospital Monza (MI) - Department of Experimental Medicine Milan Bicocca's University, Milan, Italy;

⁵ Department of Resuscitation and Organ Transplantation Surgery Sciences, Section of Anesthesiology and Resuscitation, University of Pavia

Correspondence to:

Dr. Mario Regazzi

Head of Laboratory of Clinical Pharmacokinetics

Foundation IRCCS Policlinico San Matteo

P.le Golgi, 2

I - 27100 Pavia

Italy

Tel. +39 0382 503471

Fax +39 0382 422701

e-mail address: regazzim@smatteo.pv.it

Acknowledgements:

This research is supported by a grant of Scientific Direction of Fondazione IRCCS Policlinico San Matteo, Pavia, Italy.

Abstract

Background

Ropivacaine has an optimal toxicity profile for epidural anesthesia in adults, but there are currently no studies concerning its pharmacokinetics during continuous infusion. The primary objective of this study was to evaluate the pharmacokinetics and safety of ropivacaine in adults during a 48-hours continuous epidural infusion.

Materials and methods

We enrolled 43 adults (ASA I-II) scheduled for major abdominal or urologic surgery with postoperative continuous epidural analgesia with ropivacaine 0.2% (5mL/h) and sufentanil 0.75 µg/mL for 48 hours.

Ropivacaine blood samples were collected, during continuous epidural infusion, before the bolus and 3, 6, 12, 24, 48, 54, 60 hours after the bolus; plasma concentrations were measured on HPLC-UV. The concentration-time relationship of ropivacaine levels was analyzed using a population pharmacokinetic method based on a mixed-effect-model approach (P-PHARM software).

Results

Mean plasma concentration of ropivacaine at the end of epidural infusion (C_{48h}) was 1.69 µg/mL (0.21-3.8 µg/mL). Mean (range) C_{max} , was 1.82 µg/L (0.61–4.0 µg/mL); the area under the plasma concentration curve, $AUC_{(0-60)}$, was 67.48 ± 30.60 µg.h/mL.

Total plasma ropivacaine concentrations fell mainly within (84%) or below (12%) the range reported to be safe in adults (1.0–3.0 µg/mL). Only 2 patients (5%) reached ropivacaine plasma levels higher than 3 µg/mL, namely 3.8 and 4.0 µg/mL at 48 and 54 hours, respectively. Total ropivacaine concentrations up to 4.0 µg/mL were tolerated during long-term epidural ropivacaine infusion.

Mean clearance for total ropivacaine was 5.33 L/h. Age was the only covariable to significantly reduce clearance variability: CL (L/h) = $15.04 - 0.148 * \text{age}$ (years). The volume of distribution (V_d) was 92.15 L. The infusion dosing period half-life ($t_{1/2,DP} = 0.693 * V_d/CL$) was 10.8 hours.

Conclusions

Exposure to ropivacaine during epidural infusion is highly variable. The apparent infusion dosing half-life $t_{1/2,DP}$ is the most appropriate parameter to predict drug

1
2
3
4
5
6
7
8
9
0
1
2
3
4
5
6
7
8
9
0
1
2
3
4
5
6
7
8
9
0
1
2
3
4
5
6
7
8
9
0
1
2
3
4
5
6
7
8
9
0
1
2
3
4
5
6
7
8
9
0
1
2
3
4
5
6
7
8
9
0

accumulation upon epidural infusion since it appears to better reflect the interplay interference between volume distribution and absorption rate during the accumulation phase. Prediction of ropivacaine accumulation can be improved by considering patient age.

For Peer Review

Introduction

Ropivacaine (RPV) is a long-acting amide-type local anesthetic with a similar structure to bupivacaine [1]. Many literature studies have demonstrated the clinical efficacy of ropivacaine 0.2% epidural infusion, with only some individual case reports of major side-effects. [2,3,4,5] Although ropivacaine is a safer alternative to bupivacaine, excessive plasma concentrations of ropivacaine can cause severe central nervous system and cardiac toxicity. After epidural administration, both the systemic absorption and the systemic disposition of ropivacaine play an important role in determining the clinical profile and the risk of systemic toxicity. [6,7,8,9]

Ropivacaine calculated terminal half-life is significantly longer after epidural than after intravenous administration. Ropivacaine absorption after epidural administration cannot be derived directly from plasma concentration-time curves because of flip-flop kinetics. [9,10] The flip-flop model implies slow absorption of ropivacaine from the epidural space into the systemic circulation rate-limits drug elimination. Therefore, when the process of absorption is a limiting factor, the terminal half-life reflects the rate and the extent of absorption and not the elimination process. [10,11] In a system consisting of a series of processes, the decrease in concentrations after administration is discontinued and the time to reach the steady-state depends on the slowest process in the chain. This has implication for designing epidural continuous infusion schedules of ropivacaine, considering the clinical significance of accumulation reaching either toxic or ineffective concentrations.

The primary goal of this study was to evaluate the pharmacokinetics of ropivacaine accumulation in adults receiving continuous epidural analgesia during the first 48 h after major surgery.

Material and methods

After approval from the Ethics Committee of San Matteo Hospital (EudraCT number 2010-019393-32) and written informed consent 49 adult patients, ASA class I-II, scheduled for major abdominal or urological surgery and planned to receive a postoperative epidural infusion after surgery for pain control were enrolled. Exclusion criteria were emergency surgery, coagulopathy, renal, hepatic, neurological or psychiatric diseases, a history of peripheral neuropathies and chronic opioid therapy.

Before anesthesia induction epidural catheter was positioned in sitting position, using the loss resistance technique. In patients scheduled for upper abdominal surgery the epidural catheter was placed between T7-T8 or T9-T10. In patients scheduled for lower abdominal or urologic surgery between T10-T11. General anesthesia was induced with Propofol 2mg/kg, Fentanyl 2 µg/kg, Cisatracurium 0.15 mg/kg, and was maintained with Fentanyl and Sevoflurane 2%. Forty five minutes before the end of surgery patients received an epidural loading dose (RPV 0.2% 5 ml + Sufentanil 10 µg), followed by a second bolus (RPV 0.2% 5 ml) 15 minutes later. At the end of surgery an epidural infusion of Ropivacaine 0.2% plus Sufentanil 0.8 µg/ml was started. Ropivacaine/Sufentanil epidural infusion was constantly delivered at a rate of 5ml/h using an electronic infusion pump during the first 48 hs after surgery.

Patients were evaluated every 6 hours during the first day after surgery and every 12 hours in the second postoperative day. We recorded vital signs (arterial pressure and heart rate), pain according to the Numeric Rate Scale (at rest - NRS - and after movement -mNRS-), analgesic rescue dose (administered if NRS>4), Holmen scale (to assess if there was sensory block), sedation scale and clinical side-effects (nausea, vomiting, itching, hypotension, systemic neurological side effects)

Reagents

RPV was a gift of the Department of Anesthesia and Intensive Care. Phenacetin was purchased from Sigma (St. Louis, MO, USA). All other chemicals and reagents used were of the highest commercially available quality.

Instrumentation

1
2
3
4 The HPLC system consisted of Varian Prostar Mod.430 a pump equipped with
5 variable-wavelength UV detector (Varian Prostar Mod.330). Separation was achieved
6 using a reverse-phase C-18 column (250×4.6 mm I.D., particle size 5µm, Hypersil
7 BDS-CPS Analitica, Italy). The mobile phase was acetonitrile-methanol-50mM
8 potassium dihydrogen phosphate (pH=6) (180:160:660, v/v/v) delivered at a flow rate of
9 1.3 mL/min. Chromatographic separation was performed at laboratory room
0 temperature and monitored at 210nm.

1 The HPLC method has been validated over the range 0.1-4 µg/mL. The assay was
2 linear over the entire concentration range ($r^2= 0.99$). Intra- and inter-day precision and
3 accuracy was less than 6%.

4 The limit of detection (LOD) was 0.050 µg/mL, the limit of quantification (LOQ) was 0.1
5 µg/mL.

6 *Preparation of Standard solution and standard curves*

7 A standard stock solution (1mg/mL) of drug was prepared in methanol-water (50/50),
8 stored at -20°C and were stable for at least 6 months. Plasma standards and controls
9 were prepared at concentrations of 0.1, 0.2, 0.4, 1.0, 2.0, 4.0 µg/mL and 0.12 (Low),
0 0.8 (Medium) and 1.6 (High) µg/mL, respectively, by diluting appropriate aliquots of the
1 stock solution with drug-free serum. The calibration curve was obtained by linear
2 regression of the peak-height ratios of ropivacaine to the internal standard and plotting
3 these against the nominal concentration of the drug.

4 *Blood sampling*

5 Blood samples were obtained immediately before bolus drug administration and 3, 6,
6 12, 24, 48, 54 and 60 h after starting the infusion. Plasma was separated by
7 centrifugation, transferred to clean prelabeled tubes and frozen at -20°C until analysis.

8 *Sample preparation*

9 250 µL of distilled deionized water, 500 µL of dichloromethane and 10 µL phenacetin
0 (10 µg/mL, I.S.) were added to 250 µL of plasma. After vortex mixing for 3 minutes, the
1 tubes were centrifuged at 1200g for 10 min. The organic phase was transferred into a
2 clean conical tube and evaporated to dryness under a gentle nitrogen stream. The
3 residue was dissolved in 200 µL mobile phase and 50 µL was injected into HPLC.
4
5
6
7
8
9
0

Pharmacokinetic analysis

The concentration-time relationship of ropivacaine levels (corresponding to 6 data points) during an epidural infusion preceded by 2 sequential boluses was analyzed using a population pharmacokinetic method based on a mixed-effect-model approach. This method separates explicitly the variability of drug concentrations in the population into two parts: interindividual variability characterized by the distribution of pharmacokinetic parameters in the population and residual variability (e.g., measurement errors). A parametric approach [12,13] was used (using the P-PHARM software, which is now incorporated into the Innaphase Kinetica suite) to estimate the mean and interindividual variance of each pharmacokinetic parameter in the population, to calculate the Bayesian maximum a posteriori estimates of individual pharmacokinetic parameters, and to test the relationships between these individual estimates and several covariates (gender, age, body weight, height, renal and hepatic function indices). During covariate modeling, P-PHARM can automatically search for a linear relationship between covariates and the population parameter estimates.

Pharmacokinetic data were fitted with different compartmental models. The most appropriate model was chosen based on the Akaike information criterion [12] and the examination of residual plots. A one-compartment model with sequential bolus and infusion inputs was fitted to the total plasma ropivacaine concentration-time data.

The plasma concentration versus time curve of ropivacaine during continuous epidural infusion (R_0 : rate of epidural infusion) was described by the equation:

$$C = (R_0/CL) \cdot (1 - e^{-\lambda_{DP} \cdot t})$$

λ_{DP} indicates the “mixed” (absorption/distribution/elimination) rate constant of ropivacaine observed during 48-hour epidural drug administration and calculated by the CL/V_d ratio. $t_{1/2,DP}$ was defined as the $0.693/\lambda_{DP}$ ratio and represents the infusion dosing half-life.

Ropivacaine pharmacokinetic starting estimates for the population analysis were obtained from previous studies. A heteroscedastic error variance (1/Y) model was used to describe residual error, and a log-normal distribution was used to describe

interpatient variability in apparent clearance (CL) and apparent volume of distribution (Vd).

When bioavailability (F) is not known, estimates of CL should be related to F, *i.e.*, CL/F. Bioavailability was fixed to 1, assuming total (100%) absorption after epidural administration. Model evaluation was conducted as recommended in the P-PHARM manual and also by examination of a plot of measured/predicted concentration data versus time.

After the end of infusion, the terminal rate constant ($\lambda_{\text{terminal}}$) was determined for total ropivacaine by linear regression of the last 3 data points on the plasma concentration-time curve (from the 48th hour to the 60th hour):

$$C' = C_{48\text{h}} \cdot e^{-\lambda_{\text{terminal}} \cdot t'}$$

$t_{1/2,\text{terminal}}$ was defined as the $0.693/\lambda_{\text{terminal}}$ ratio and represents the terminal half-life after the infusion is stopped. t' is the time since the end of the infusion.

The area under the plasma concentration time curve was calculated by numeric integration using the linear trapezoidal rule. C_{max} was the highest concentration achieved; the time to C_{max} and the plasma concentrations at 3, 6, 12, 24, 48, 54 and 60 h after starting ropivacaine administration ($C_{3\text{h}}$, $C_{6\text{h}}$, $C_{12\text{h}}$, $C_{24\text{h}}$, $C_{48\text{h}}$, $C_{54\text{h}}$, $C_{60\text{h}}$, respectively) were derived directly from ropivacaine levels.

Statistical analysis

Patient characteristics are summarized as median values (range). Total plasma ropivacaine concentrations and derived pharmacokinetic data are summarized as geometric mean (geometric coefficient of variation, CV%) and/or mean (\pm SD) values. Multiple-linear regression analysis with stepwise inclusion between maximum *a posteriori* estimates of all pharmacokinetic parameters and all covariates was performed with the analysis of variance to determine the relevant relationships (with the P-PHARM software). [12] A value of $P < 0.05$ was considered significant.

Results

Forty-nine adults consecutive were enrolled and six were excluded after discontinuation of epidural continuous infusion because of clinical or hemodynamic problems not related to ropivacaine epidural infusion; data collection was incomplete in one other patient, whose data were nevertheless included in our PK analysis. Forty-three patients completed the analysis.

Thirty-five patients underwent major abdominal surgery and eight underwent urological surgery (29 males and 14 females). Patient age ranged from 41 to 83 years (median=63 years) and body weight ranged from 50 to 100 kg (median= 75.5 kg).

Analgesia was satisfactory in all cases and there were no cardiocirculatory side-effects, such as major hypotension or arrhythmia, which could require discontinuation of the epidural infusion. There were no minor (facial dyesthesia, tinnitus, changes in sensitivity and strength) or major (convulsions, hallucinations) neurological complications during continuous epidural infusion of ropivacaine.

A total of 330 plasma concentrations from 43 patients were used to compute pharmacokinetic parameters including a baseline sample, four samples collected during ropivacaine infusion and three samples collected during the first 12 h after ropivacaine infusion discontinuation.

Pharmacokinetic data (geometric mean and geometric coefficient of variation, CV%) are summarized in Table I.

During the epidural infusion (ropivacaine 10mg/h) preceded by 2 sequential boluses of 10 mg each, plasma concentrations of ropivacaine leveled off, as expected. Exposure to ropivacaine during epidural infusion was highly variable.

The plasma concentration of ropivacaine at the end of epidural infusion (C_{48h}) was $1.60 \pm 0.89 \mu\text{g/mL}$. After 12 hours and 24 hours, respectively, ~50% and ~75% of the 48-hour level of ropivacaine were reached. C_{max} , was $1.82 \pm 0.89 \mu\text{g/L}$ and was observed at a mean time (t_{max}) of 48 hours.

Total plasma ropivacaine concentrations were mainly within (84%) or below (12%) the range reported to be safe in adults (1.0–3.00 $\mu\text{g/mL}$). [5,6, 9, 14,15,16] Only 2 patients (5%) reached ropivacaine plasma levels higher than 3.0 $\mu\text{g/mL}$, namely 3.8 and 4.0

1
2
3
4 µg/mL at 48 and 54 hours, respectively. Total ropivacaine concentrations up to 4.0
5 µg/mL were tolerated during long-term epidural ropivacaine infusion.

6
7 Figure 1 shows all the measured plasma ropivacaine concentrations and the drug
8 concentration-time curve resulting from the average population parameters estimated
9 with P-Pharm.
0

1
2
3 Estimated population characteristics of the kinetic parameters together for ropivacaine
4 clearance (CL) and the apparent volume of distribution (Vd) with their coefficient of
5 variation are presented in Table II.
6

7
8 The dosing period absorption/distribution/elimination rate constant of ropivacaine
9 calculated by the average population parameters ($\lambda_{DP} = CL/Vd$) was $0.064h^{-1}$ and the
0 corresponding $t_{1/2,DP} = (0.693 \cdot Vd)/CL = 10.8$ hours.
1
2

3
4 Following the end of epidural infusion of ropivacaine, the terminal half-life ($t_{1/2,terminal}$),
5 determined for total ropivacaine by linear regression of the last 3 data points on the
6 plasma concentration-time curve was 7.4 hours.
7

8
9 The pharmacokinetic population parameters were subsequently used to fit the
0 concentration data up to 48 h using the Bayesian estimation method. This procedure
1 enables the estimation of individual pharmacokinetic parameters for ropivacaine. The
2 individual posterior Bayesian estimates of ropivacaine pharmacokinetic parameters
3 were generated using a maximum *a posteriori* probability Bayesian fitting procedure.^{23]}
4

5
6 The performance of individualized Bayesian estimation steps is shown in the plots of
7 the observed versus estimated plasma concentrations in Figure 2, and by the
8 frequency distribution histogram of the normalized residuals which revealed a
9 distribution very close to the expected one (normal with zero mean and unitary
0 variance).
1

2
3 Through covariate analysis, we found that age was the only independent predictor
4 identified.
5

6
7 In fact, the stepwise inclusion performed on P-PHARM revealed an age effect on CL,
8 which explains 39.8% of the interindividual variability of the population pharmacokinetic
9 parameters. Ropivacaine clearance correlated inversely with age. The linear correlation
0 between age and ropivacaine clearance was best described by the equation (least
1 square regression; $r = 0.63$, $p < 0.001$):
2
3
4
5
6
7
8
9
0

$$CL (L/h) = 14.9 - 0.15 \cdot \text{age (years)}$$

For Peer Review

1
2
3
4
5
6
7
8
9
0
1
2
3
4
5
6
7
8
9
0
1
2
3
4
5
6
7
8
9
0
1
2
3
4
5
6
7
8
9
0
1
2
3
4
5
6
7
8
9
0

Discussion

Pharmacokinetic of epidural ropivacaine was well described after single dose, but it was important to detect what it can happen during continuous infusion. Whereby we investigated which kind of kinetic we have during epidural continuous infusion and if there are predictors that can determine a change in the pharmacokinetic profile.

In fact, plasma concentration profiles and the potential risk of systemic toxicity after epidural administration of ropivacaine depends on the administered dose and the interaction between the rate processes involved in drug absorption and systemic disposition. [2,16,17,18,19] Unfortunately, absorption and disposition kinetics cannot be derived directly from the plasma concentration–time profile, since local anesthetics exhibit flip-flop kinetics after epidural administration. In a system consisting of a series of processes or compartments, not only the decrease in the concentrations after stopping administration but also the time to reach steady-state depend on the slowest process in the chain.

Half-life is the most clinically relevant pharmacokinetic parameter to predict drug accumulation time in a patient upon constant rate administration. Problems arise when we have to pick the half-life upon which to calculate drug accumulation. Also, when estimating the time for the epidural administration to achieve steady-state, we have to decide if we should work with the actual elimination half-life of ropivacaine obtained from the PK of the intravenous formulation ($t_{1/2,IV}$), consider the terminal half-life calculated after the end of the infusion ($t_{1/2,terminal}$), or take into account the “mixed” absorption/distribution/elimination half-life estimated during the epidural infusion ($t_{1/2,DP}$).

When the process of absorption is not a limiting factor, half-life is a hybrid parameter controlled by plasma clearance and extent of distribution. When the process of absorption is a limiting factor, the terminal half-life reflects mainly the rate and extent of absorption and not the elimination process (flip-flop pharmacokinetics). [20] Our data indicate that the true half-life of ropivacaine, as reported after IV administration ($t_{1/2,IV}$ 1.8 ± 0.7 hours) [21], is irrelevant to the time to reach steady-state.

1
2
3
4 In order to predict drug accumulation upon epidural infusion dosing, it is more
5 appropriate to use the apparent infusion dosing half-life $t_{1/2,DP}$ since this parameter
6 appears to better reflect the interplay interference between volume distribution and
7 absorption rate during the accumulation phase. Our data indicate that this infusion
8 dosing period half-life ($t_{1/2,DP} = 10.8$ hours) was higher ($\uparrow 45\%$) than the terminal half-life
9 ($t_{1/2,terminal} = 7.4$ hours); a more pronounced sensitivity of the $t_{1/2,DP}$ to the absorption rate
0 process probably explains the difference. This difference seems to confirm the
1 indication by Sahin and Benet [22] to avoid the acritical use of a drug's terminal half-life
2 to predict the drug's accumulation rate.
3

4 A one-compartment model with zero-order input and first-order elimination was optimal
5 for describing the data in the accumulation phase during epidural infusion of
6 ropivacaine. The same model was used by Hansen et al. [16] to describe the trend of
7 ropivacaine concentrations during the accumulation phase in pediatric patients (mean
8 age: 3.3 years, range: 0.3-7.3 years) under continuous epidural infusion. In the majority
9 of children ropivacaine concentrations had reached the steady-state within 36 hours
0 and the half life ($t_{1/2,DP}$) of total ropivacaine was 4.9 hours. The apparent total clearance
1 (0.51L/h/kg) and the apparent volume of distribution (3.1L/kg) were about six and three
2 times the values obtained in our adult patients, respectively. The pharmacokinetic
3 parameters obtained in our study from data following continuous epidural infusion are
4 different from the corresponding values reported after IV administration (V_d : 88.8L vs.
5 41.7L, CL : 5.7L/h vs. 23.2L/h) in adult patients. On the other hand, the final parameters
6 of ropivacaine obtained by a population pharmacokinetic analysis [23] (NONMEN) after
7 loco-regional administration as an anesthetic in hip or knee replacement surgery were
8 quite similar: the apparent clearance was 3.5L/h and the volume of distribution was
9 65.3L. When evaluating the individual pharmacokinetic parameters, though, we must
0 keep in mind that modeling is always dangerous if no IV data are available, because
1 we may get a good fit of data to our equations but the parameters are hybridized and
2 therefore incorrect. It has been underlined that when one models with sums of
3 exponentials, one can simply assume consistency (best to assume this for the equation
4 and not the model). Thus, good fits do not validate our model but only indicate
5 consistency. In most cases, like this one, it is not strictly necessary to assume
6

validation [20]. Modeling with sums of exponentials is feasible, as long as the results are reported in terms of macroscopic parameters (coefficients and exponents) and model-independent parameters, such as mean systemic or oral clearance, which is always dose over AUC (Table II).

For a drug such as ropivacaine, the time to reach the steady-state may be influenced by the absorption rate (if administered by extravascular route), by the volume of distribution and by clearance; however, mean steady-state concentration depends only on clearance. Also, it is well recognized that clearance (divided by bioavailability) defines the appropriate rate of administration of a particular drug through the relationship: $R_0 = CL \cdot C_{ss,ave} \cdot F$. For ropivacaine (10 mg/hour), a drug following linear kinetics, the predicted concentration at steady-state, $C_{ss,ave}$, based on individual *a posteriori* Bayesian estimates of ropivacaine pharmacokinetic clearance resulted in a mean value of 2.0 (± 0.62) $\mu\text{g/mL}$. At the end of infusion (48 h after the start of treatment) the ropivacaine plasma levels achieved corresponded on average to $\sim 90\%$ of the levels that would be achieved at the steady-state.

Our data showed that prediction of ropivacaine accumulation can be improved by considering patient age. After epidural infusion, a trend towards a lower total plasma clearance with increasing age was observed (Fig.3). Simon et al.[24] studied the influence of age on pharmacokinetics of ropivacaine after single epidural administration and reported similar results: clearance is significantly decreased in the oldest patients relative to the youngest ones. In our study we confirmed that also during continuous infusion there is an inversely correlation between age and clearance. In fact RPV clearance in a 40-year-old individual is about twice as high as in a 70-year-old subject. As ropivacaine is extensively metabolized in the liver [8], the age dependence in clearance may presumably reflect decreased enzyme activity.

Studies during prolonged epidural infusion of ropivacaine showed that postoperative increases in plasma α_1 -acid glycoprotein concentrations are associated with increases in the plasma protein binding and in the total plasma concentrations of ropivacaine. Ropivacaine total clearance depends on liver enzyme activity and on the

1
2
3
4 free drug fraction in plasma ($CL \sim CL_i \cdot f_u$; CL_i = drug intrinsic clearance, f_u : unbound
5 drug fraction), while the clearance of the unbound drug depends solely on enzyme
6 activity. [25,26] Therefore, changes in the fraction bound to proteins (alpha₁-acid
7 glycoprotein) may affect the drug's total clearance but might also alter the relationship
8 between total drug concentration and possible toxic effects. [26,27,28] We did not
9 measure alpha₁-acid glycoprotein concentrations and to some extent this is a limitation
0 of our study. However, the postoperative course of the patients included in our trial did
1 not exhibit any pathophysiological changes other than those expected in patients
2 undergoing this type of surgical procedure.

3
4 In conclusion, we demonstrate that during continuous epidural infusion of ropivacaine
5 there is a flip flop kinetic and that we have to avoid the acritical use of a drug's terminal
6 half-life to predict the drug's accumulation rate. Furthermore, we found an equation that
7 could correlate the ropivacaine clearance to age also during epidural continuous
8 infusion. It will be necessary to perform other trials in order to improve ropivacaine
9 dosage individualization on the basis of pharmacokinetic data of patients.
0
1
2
3
4
5
6
7
8
9
0
1
2
3
4
5
6
7
8
9
0
1
2
3
4
5
6
7
8
9
0

view

References

1. McClellan KJ, Faulds D. Ropivacaine: an update of its use in regional anaesthesia. *Drugs* 2000; 60: 1065-93.
2. Allegri M, Delazzo MG, Grossi P, Borghi B. Efficacy of drugs in regional anesthesia: A review. *Eu J Pain* 2009; 3(2): 41-8.
3. Mather LE, Chang DH. Cardiotoxicity with modern local anaesthetics: is there a safer choice? *Drugs* 2001; 61: 333-42.
4. Groban L, Deal DD, Vernon JC, James RL, Butterworth J. Cardiac resuscitation after incremental overdosage with lidocaine, bupivacaine, and ropivacaine in anesthetized dogs. *Anesth Analg* 2001; 92: 37-43.
5. Knudsen K, Beckmann Suurkula M, Blomberg S, Sjövall J, Edvardsson N. Central nervous and cardiovascular effects of i.v. infusions of ropivacaine, bupivacaine and placebo in volunteers. *Br J Anaesth* 1997; 78: 507-14.
6. Scott DB, Lee A, Fagan D, Bowler GMR, Bloomfield P, Lundh R. Acute toxicity of ropivacaine compared with that of bupivacaine. *Anesth Analg* 1989; 69: 563-9.
7. Knudsen K, Beckman M, Suurküla M, Blomberg S, Sjövall J, Edvardsson N: Central nervous and cardiovascular effects of i.v. infusions of ropivacaine, bupivacaine and placebo in volunteers. *Br J Anaesth* 1997; 78:507–14.
8. Jokinen MJ. The pharmacokinetics of ropivacaine in hepatic and renal insufficiency. *Best Practice Research Clinical Anaesthesiol* 2005; 19(2): 269-74.
9. Erichsen CJ, Sjovall J, Kehlet H, hedlund C, Arvidsson T. Pharmacokinetics and analgesic effect of ropivacaine during continous epidural infusion for postoperative pain relief. *Anesthesiology* 1996; 84(4): 834-42.
10. Lee A, Fagan D, Lamont M, Tucker GT, Halldin M, Scott DB: Disposition kinetics of ropivacaine in humans. *Anesth Analg* 1989; 69: 736–8.
11. Emanuelsson B-MK, Persson J, Alm C, Heller A, Gustafsson LL. Systemic absorption and block after epidural injection of ropivacaine in healthy volunteers. *Anesthesiology* 1997; 87: 1309-17.
12. SIMED P-PHARM user's guide. SIMED, Creteil, France 17, 1994.
13. Mentre F, Mallet A. Handling covariates in population pharmacokinetics. *Int J Biomed Comput* 1994; 36: 25–33.
14. Morton CPJ, Bloomfield S, Magnusson A, Jozwiak A, McClure JH. Ropivacaine 0.75% for extradural anaesthesia in elective caesarean section: an open clinical and pharmacokinetic study in mother and neonate. *Br J Anaesth* 1997; 79(1): 3-8.
15. Emanuelsson B-MK, Persson J, Sandin S, Alm C, Gustafsson LL. Intraindividual and interindividual variability in the disposition of the local anesthetic ropivacaine in healthy subjects. *Therap Drug Monitor* 1997; 19: 126-31.

16. Hansen TG, Ilett KF, Lim SI, Reid C, Hackett LP, Bergesio: Pharmacokinetics and clinical efficacy of long-term epidural ropivacaine infusion in children. *Br J Anaesth* 2000; 85: 347–53.
17. Emanuelsson B-MK, Zaric D, Nydahl PA, Axelsson K. Pharmacokinetics of ropivacaine and bupivacaine during 21 hours of continuous epidural infusion in healthy male volunteers. *Anesth Analg*; 1995; 81: 1163-8.
18. Halldin MM, Bredberg E, Angelin B, Arvidsson T, Askemark Y, Elofsson S, Widman M. Metabolism and excretion of ropivacaine in humans. *Drug Metab Dispos* 1996; 24: 962–8.
19. Helton SH, Denson DD. Pharmacodynamics and pharmacokinetics of epidural ropivacaine in humans. *Anesth Analg* 1990; 70: 16-21.
20. PharmPK Discussion-Steady state and long half-life. PharmPK Discussion List Archive – PK2006542.html-2006.
21. Habre W, Bergesio R, Johnson C, Hackett P, Joyce D, Sims C. Pharmacokinetics of ropivacaine following caudal analgesia in children. *Paediatr Anaesth* 2000; 10: 143–7.
22. Sahin S, Benet LZ. The operational multiple dosing half-life: a key to defining drug accumulation in patients and to designing extended release dosage forms. *Pharmaceutical Research* 2008; 25(12): 2869-77.
23. Nicòlas J, Oltra D, Navarro-Fontestad C, Nicòlas N, Ramìrez F, Alòs M, Casabo VG. Population pharmacokinetics of ropivacaine and bupivacaine after loco-regional administration as anesthetic in hip or knee replacement surgery. Annual Meeting of the Population Approach Group in Europe 2009;. Abstr 1571.
24. Simon MJG, Veering BT, Stienstra R, Van Kleef JW, Burm AGL. The effects of age on neural blockade and hemodynamic changes after epidural anesthesia with ropivacaine. *Anesth Analg* 2002; 94: 1325–30.
25. MacKichan JJ. Influence of protein binding and use of unbound (free) drug concentrations. *Applied Pharmacokinetics- Principles of Therapeutic Drug Monitoring*. In *Applied Therapeutics III* edition 1992; Chapter 5.
26. Wiedemann D, Mühlnickel B, Staroske E, Neumann W, Röse Ropivacaine plasma concentrations during 120-hour epidural infusion. *Br J Anaesth*. 2000; 85(6): 830-5.
27. Hansen TG, Ilett KF, Reid C, Lim SI, Hackett LP, Bergesio R. Caudal ropivacaine in infants: population pharmacokinetics and plasma concentrations. *Anesthesiology* 2001; 94: 579-84.
28. Bleckner LL, Bina S, Kwon KH, McKnight G, Dragovich A, Buckenmaier CC. Serum Ropivacaine Concentrations and Systemic Local Anesthetic Toxicity in Trauma Patients Receiving Long-Term Continuous Peripheral Nerve Block Catheters. *Anesth Analg* 2010; 110: 630-4.

Table I. Total plasma ropivacaine concentrations (geometric mean, geometric coefficient of variation (%)) at different time points during epidural infusion (ropivacaine 10mg/h) preceded by 2 sequential boluses of 10 mg each.

PK parameter	Unit	Geometric Mean	Geometric coefficient of variation (%)
C_{0h}	$\mu\text{g/mL}$	0.00	0.00
C_{3h}	$\mu\text{g/mL}$	0.40	87.7
C_{6h}	$\mu\text{g/mL}$	0.59	56.1
C_{12h}	$\mu\text{g/mL}$	0.88	31.5
C_{24h}	$\mu\text{g/mL}$	1.22	20.6
C_{48h}	$\mu\text{g/mL}$	1.60	3.1
C_{54h}	$\mu\text{g/mL}$	0.81	8.5
C_{60h}	$\mu\text{g/mL}$	0.56	39.5
C_{3h}/C_{48h}	-	0.25	28.3
C_{12h}/C_{48h}	-	0.55	10.2
C_{24h}/C_{48h}	-	0.76	6.6
C_{max}	$\mu\text{g/mL}$	1.82	2.9
t_{max}	hours	43	2.4
$AUC_{(0-60h)}$	$\mu\text{g.h/mL}$	67.48	2.2
$CL=(D/AUC_{\text{tot}})$	L/h	6.96	8.6

Table II – Ropivacaine population pharmacokinetic results

Parameter	Unit	Mean	Percent Coefficient of Variation
Apparent Clearance (CL/F)	L/h	5.33	21.69
Apparent Volume of Distribution (Vd/F)	L	92.15	16.42

Values are mean (percent coefficient of variation)

Or Peer Review

1
2
3
4
5
6
7
8
9
0
1
2
3
4
5
6
7
8
9
0
1
2
2
3
4
5
6
7
8
9
0
1
2
3
3
5
6
7
8
9
0
4
4
5
6
6
7
8
9
0
1
2
3
4
5
6
7
8
9
0

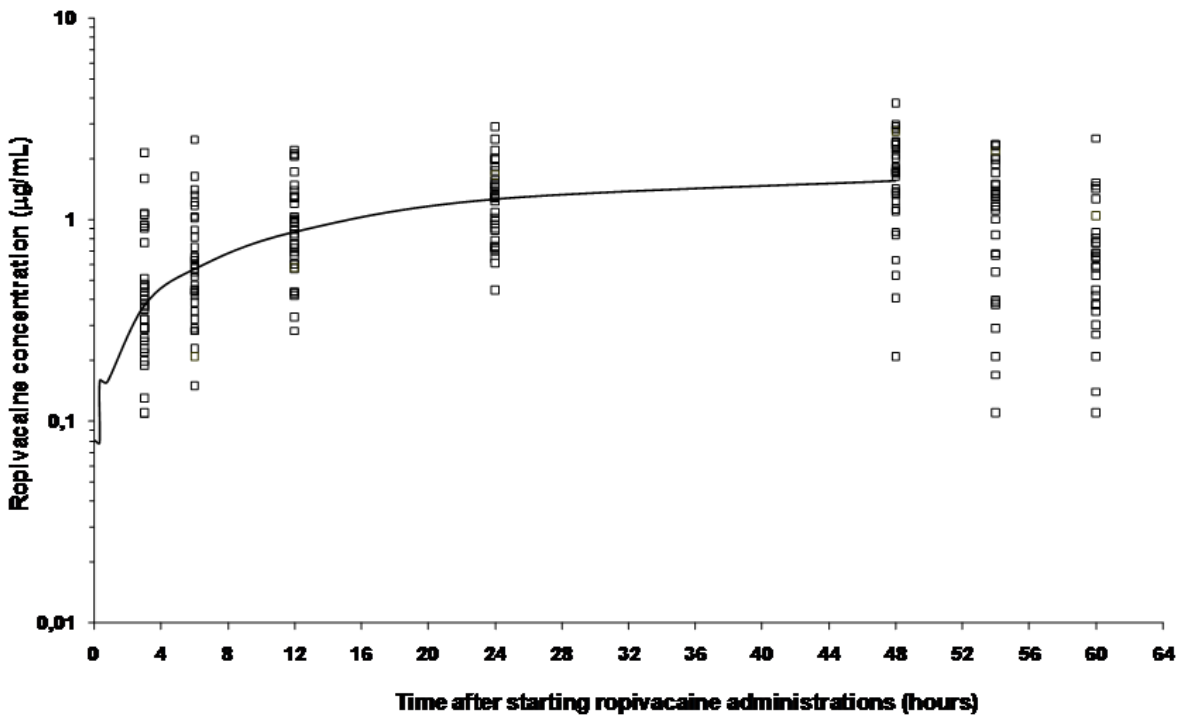


Figure 1. Total plasma ropivacaine concentration *versus* time during and after an epidural continuous infusion of 10mg/hour preceded by 2 sequential epidural boluses. The solid line shows the computer-generated line of the best fit up to 48 h, for a one-compartment model with zero-order input and first-order elimination.

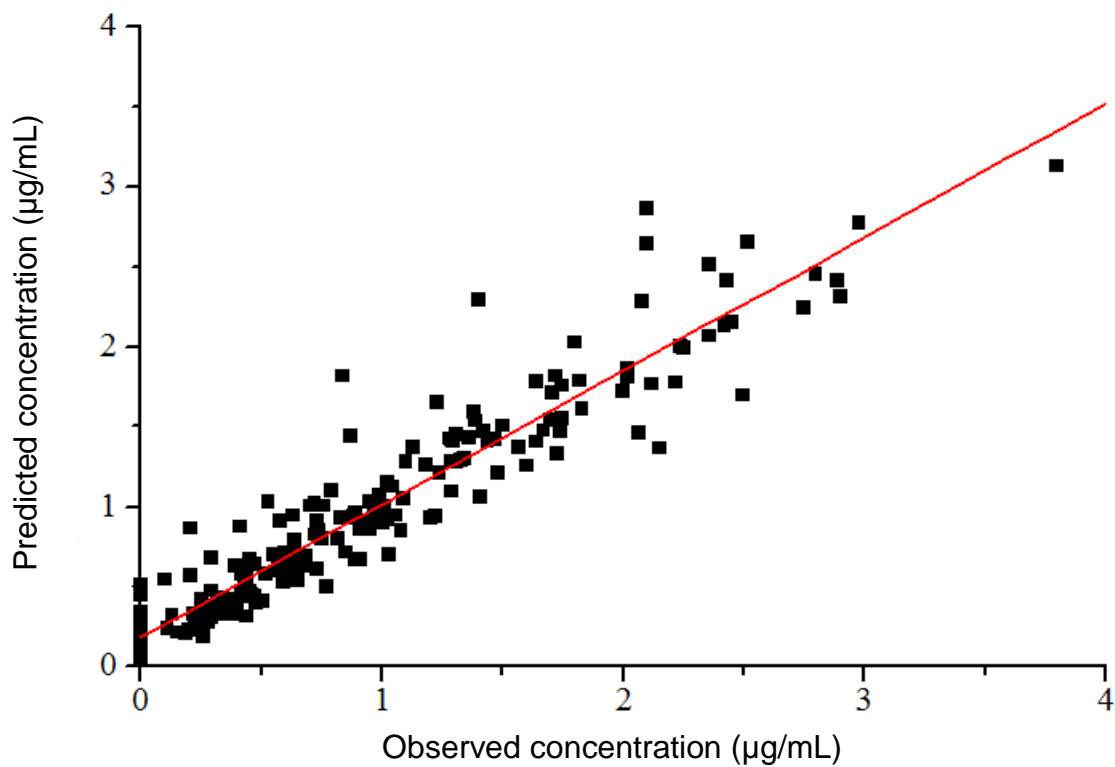


Figure 2. Scatterplot of estimated versus measured serum concentrations, in micrograms per milliliter, based on individual patient Bayesian posteriori parameter distributions. Pooled data of all 43 patients.

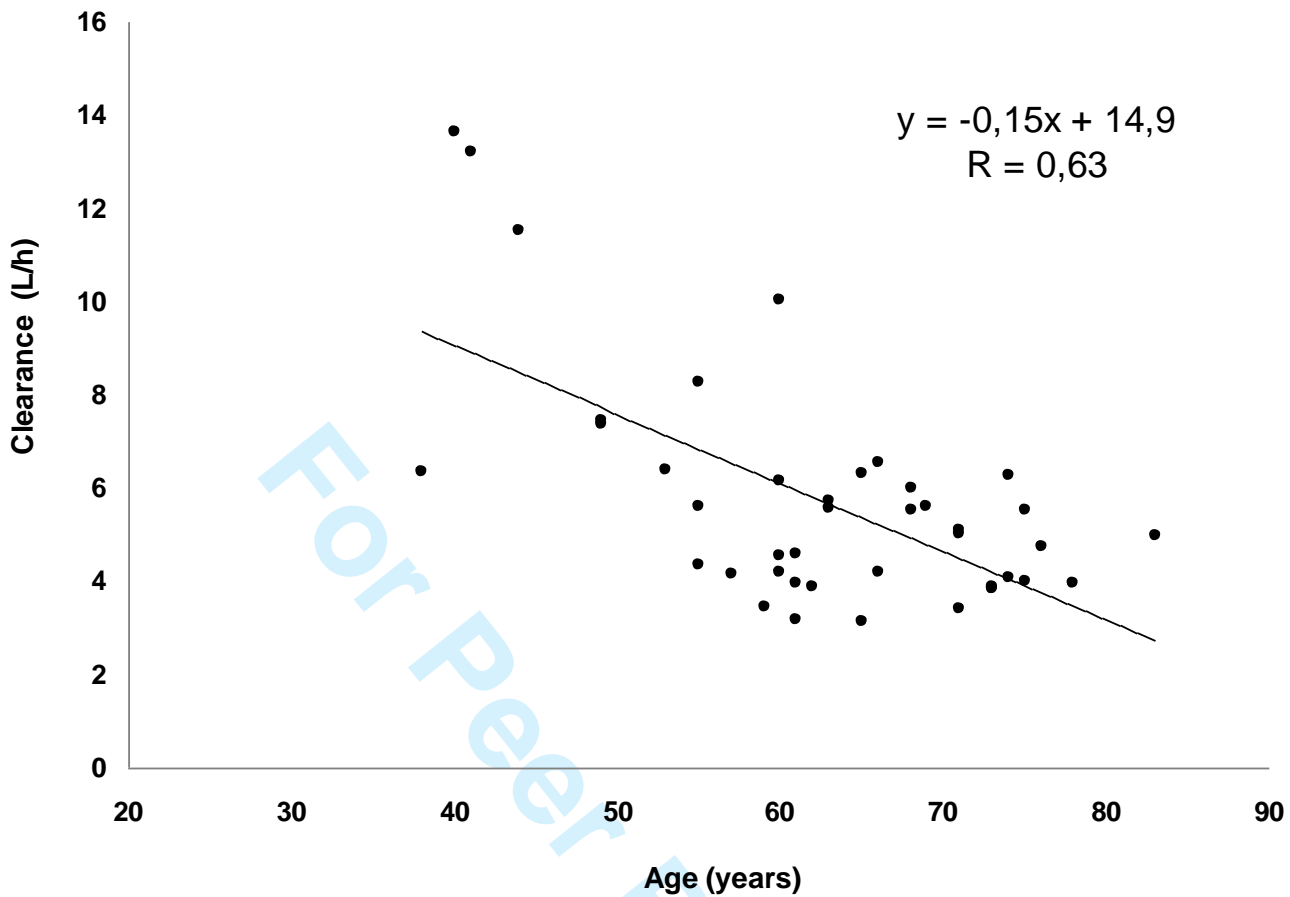


Fig 3. Relationship between ropivacaine total clearance (L/h) and age (years)

1
2
3
4
5
6
7
8
9
0
1
2
3
4
5
6
7
8
9
0
1
2
3
4
5
6
7
8
9
0
1
2
3
4
5
6
7
8
9
0
1
2
3
4
5
6
7
8
9
0