



HAL
open science

Do not forget the electrochemical characteristics of the membrane electrode assembly when designing a Proton Exchange Membrane Fuel Cell stack

Claude Lamy, Deborah Jones, Christophe Coutanceau, Pascal Brault, Sergueï Martemianov, Yann Bultel

► To cite this version:

Claude Lamy, Deborah Jones, Christophe Coutanceau, Pascal Brault, Sergueï Martemianov, et al.. Do not forget the electrochemical characteristics of the membrane electrode assembly when designing a Proton Exchange Membrane Fuel Cell stack. *Electrochimica Acta*, 2011, 56, pp.10406-10423. 10.1016/j.electacta.2011.05.098 . hal-00642249

HAL Id: hal-00642249

<https://hal.science/hal-00642249v1>

Submitted on 17 Nov 2011

HAL is a multi-disciplinary open access archive for the deposit and dissemination of scientific research documents, whether they are published or not. The documents may come from teaching and research institutions in France or abroad, or from public or private research centers.

L'archive ouverte pluridisciplinaire **HAL**, est destinée au dépôt et à la diffusion de documents scientifiques de niveau recherche, publiés ou non, émanant des établissements d'enseignement et de recherche français ou étrangers, des laboratoires publics ou privés.

Do not forget the **electrochemical** characteristics of the Membrane-Electrode-Assembly when designing a PEMFC stack

Claude Lamy^(a), Deborah J. Jones^(b), Christophe Coutanceau^(c), Pascal Brault^(d),

Sergueï Martemianov^(e) and Yann Bultel^(f), CNRS GDR n° 2985 (PACTE),

University of Poitiers, 40 Avenue du Recteur Pineau, 86022 Poitiers Cedex, France

I Introduction: Principle of Fuel Cells

I.1 Fuel Cell system

I.2 Proton Exchange Membrane Fuel Cell (PEMFC)

I.3 Components of a PEM Elementary Cell (Membrane, Catalysts, GDL)

I.4 Electrical characteristics of PEM Elementary Cell

.. Effect of the membrane properties

.. Effect of the nature of the catalytic layer

.. Effect of the structure of the gas diffusion layer

II. Experimental results obtained in the GDR PACTE

II.1 Membrane Development Needs

II.2 New preparation methods of efficient electrode catalysts

II.3 Characterization of the MEA by Electrochemical Spectroscopy (EIS)

II.4 Optimization of the Membrane-Electrode Assembly

III Conclusions

^(a) to whom correspondence should be sent : E-mail:< claude.lamy@univ-poitiers.fr>

^(b) Institut Charles Gerhardt, UMR 5253, CNRS-Université Montpellier 2, Aggregates, Interfaces and Energy Materials, Place Eugène Bataillon, 34095 Montpellier Cedex 5, France

^(c) Laboratory of Electrocatalysis, LACCO, CNRS UMR 6503, University of Poitiers, 40 Avenue du Recteur Pineau, 86022 Poitiers Cedex, France LACCO, CNRS Poitiers

^(d) GREMI, UMR6606, CNRS - Université d'Orléans, 14 rue d'Issoudun, BP6744, F-45067 ORLEANS Cedex2

^(e) Institut Pprime, UPR 3346, CNRS - Université de Poitiers; ENSMA, 40 avenue du Recteur Pineau, 86022, Poitiers, France

^(f) Laboratoire d'Electrochimie et de Physico-chimie des Matériaux et des Interfaces, UMR CNRS-GINP-UJF 5279, 1130 rue de la piscine, BP75, 38042 Saint-Marin d'Hères, France.

ABSTRACT.

The Membrane-Electrode-Assembly (MEA) is the key component of a PEMFC stack. Conventional MEAs are composed of catalyzed electrodes loaded with $0.1\text{-}0.4 \text{ mg}_{\text{Pt}} \text{ cm}^{-2}$ pressed against a Nafion[®] membrane, leading to cell performance close to 0.8 W cm^{-2} at 0.6 V . Due to their limited stability at high temperatures, the cost of platinum catalysts and that of proton exchange membranes, the recycling problems and material availability, the MEA components do not match the requirements for large scale development of PEMFCs at a low cost, particularly for automotive applications.

Novel approaches to medium and high temperature membranes are described in this work, and a composite polybenzimidazole-poly(vinylphosphonic) acid membrane, stable up to 190°C , led to a power density of 0.5 W cm^{-2} at 160°C under 3 bars abs with hydrogen and air. Concerning the preparation of efficient electrocatalysts supported on a Vulcan XC72 carbon powder, the Bönemann colloidal method and above all plasma sputtering allowed preparing bimetallic platinum-based electrocatalysts with a low Pt loading. In the case of plasma deposition of Pt nanoclusters, Pt loadings as low as $10 \mu\text{g cm}^{-2}$ were achieved, leading to a very high mass power density of ca. $20 \text{ kW g}_{\text{Pt}}^{-1}$. Finally characterization of the MEA electrical properties by Electrochemical Impedance Spectroscopy (EIS) based on a theoretical model of mass and charge transport inside the active and gas diffusion layers, together with the optimization of the operating parameters (cell temperature, humidity, flow rate and pressure) allowed obtaining electrical performance greater than 1.2 W cm^{-2} using an homemade MEA with a rather low Pt loading.

INTRODUCTION

1
2 Discovered in England in 1839 by Sir William Grove [1-2], the fuel cell is an electrochemical
3 device which transforms directly the heat of combustion of a fuel (hydrogen, natural gas,
4 methanol, ethanol, hydrocarbons, etc.) into electricity. The fuel is oxidized electrochemically
5 at the anode, without producing any pollutants (only water and/or carbon dioxide are rejected
6 in the atmosphere), whereas the oxidant (oxygen from the air) is reduced at the cathode. This
7 process does not follow Carnot's theorem, so that higher energy efficiencies are expected, e.g.
8 40 to 50 % in electrical energy, 80 to 90 % in total energy (electricity + heat production).
9

10
11
12
13 There is now a great interest in developing different kinds of fuel cells with several
14 applications (besides the first and until now main application in space programs) depending
15 on their nominal power: stationary electric power plants (100 kW to 10 MW), electricity and
16 heat production for houses and buildings (5 to 200 kW), power train sources (20 to 200 kW)
17 for the electrical vehicle (bus, truck and individual car), auxiliary power units (1 to 100 kW)
18 for various uses (automobiles, aircrafts, space launchers, space stations, etc.) and also for
19 portable electronic devices (1 W to 100 W), such as cell phones, computers, cam recorders,
20 etc. For the latter applications low temperature fuel cells are more convenient, particularly the
21 Alkaline Fuel Cell (AFC) working at 80°C with pure hydrogen and oxygen, the Proton
22 Exchange Membrane Fuel Cell (PEMFC), which can operate from ambient temperature to 60-
23 80°C with hydrogen as the fuel, either ultra-pure hydrogen (produced e.g. by water
24 electrolysis) or hydrogen-containing reformat gas, and the Direct Alcohol (Methanol or
25 Ethanol) Fuel Cell (DAFC), i.e. DMFC or DEFC, which needs higher temperatures (up to
26 120-150°C) to directly electro-oxidize methanol (ethanol). In these cases, because of the
27 relatively low working temperature, the kinetics of the electrochemical reactions involved is
28 rather slow. This requires the development of new electrocatalysts, in order to increase the
29 rate of fuel oxidation and oxygen reduction [3-5].
30
31
32
33
34
35
36
37
38
39
40

I. INTRODUCTION: PRINCIPLE OF FUEL CELLS [6-9]

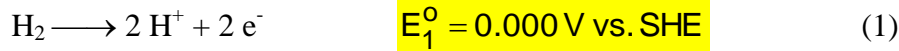
41
42
43 A fuel cell is an electrochemical power source with the advantages of both the internal
44 combustion engine and the battery. Like a combustion engine, a fuel cell will run as long as it
45 is fed with fuel, and like a battery, fuel cells convert chemical energy directly to electrical
46 energy without the Carnot limitations of combustion engines. Such an electrochemical power
47 source can reach, in theory, 100% efficiency; practical efficiencies are approximately 50%
48 electrical and more than 90% when combining electricity and heat production. Internal
49 combustion engines have a 40% maximum theoretical efficiency (Diesel engines) and a
50 practical efficiency between 15 and 25%.
51
52
53
54
55
56
57
58
59
60
61
62
63
64
65

1.1 Fuel Cell System

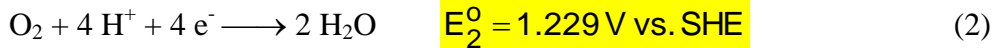
A fuel cell system consists in a fuel cell stack and auxiliary equipments, which produce electrical energy (and heat) directly from the electrochemical oxidation of a fuel in an elementary electrochemical cell (Fig.1).

An elementary electrochemical cell directly converts the chemical energy of combustion in oxygen (i.e. the Gibbs energy change, $-\Delta G$) of a given fuel (hydrogen, natural gas, hydrocarbons, kerosene, alcohols, etc.) into electricity [10-12]. Electrons liberated at the anode (negative pole of the cell) by the electro-oxidation of the fuel pass through the external circuit (producing an electrical energy, $W_e = n F E_{cell}$, equal to $-\Delta G$, where E_{cell} is the cell voltage and $F = 96485$ C the Faraday constant) and reach the cathode (positive pole), where they reduce oxygen (from air). Inside the fuel cell the electrical current is transported by migration and diffusion of the electrolyte ions (H^+ , OH^- , O^{2-} , CO_3^{2-}).

The electrochemical reactions involved are the electro-oxidation of hydrogen at the anode:



and the electro-reduction of oxygen at the cathode:



where E_i^0 are the electrode potentials versus the Standard Hydrogen (reference) Electrode (SHE). These electrochemical reactions correspond to the combustion reaction of hydrogen in oxygen:



with the thermodynamic data, under standard conditions (liquid water):

$$\Delta G^0 = -237 \text{ kJ mol}^{-1} \text{ of } H_2; \Delta H^0 = -286 \text{ kJ mol}^{-1} \text{ of } H_2.$$

The cell voltage, E_{eq}^0 at equilibrium (no current flowing) under standard conditions, is thus:

$$E_{eq}^0 = -\frac{\Delta G_0}{n F} = \frac{237 \times 10^3}{2 \times 96485} = E_2^0 - E_1^0 = 1.229 \text{ V} \approx 1.23 \text{ V} \quad (4)$$

This process produces an electrical energy, $W_e = n F E_{eq}^0 = -\Delta G^0$, corresponding to a mass energy density of the fuel, $W_{em} = -\Delta G^0 / (3600 M) = 32.9 \text{ kWh kg}^{-1} \approx 33 \text{ kWh kg}^{-1}$, with $M = 0.002$ kg the molecular weight of hydrogen and $n = 2$ the number of electrons involved in the oxidation of one hydrogen molecule. However hydrogen has to be stored, either as a pressurized gas (200 to 700 bars) or in the liquid state (at 20K) greatly reducing the volumetric energy density (15 g to 71 g per liter), i.e. 1.5 to 12 % weight storage density (0.5 to 4 kWh kg⁻¹, instead of the theoretical density 33 kWh kg⁻¹).

The working of the cell under reversible thermodynamic conditions does not follow Carnot's theorem, so that the theoretical energy efficiency, ε_{cell}^{rev} , defined as the ratio of the produced electrical energy ($-\Delta G$) to the chemical combustion energy ($-\Delta H$), i.e.

$\varepsilon_{cell}^{rev} = \Delta G / \Delta H$, is very high, e.g. 83% for the hydrogen-oxygen fuel cell at 25°C under

standard conditions, 97% for the DMFC and for the DEFC.

This theoretical efficiency is much greater (by a factor at least of 2) than that of a thermal combustion engine, producing the reversible work, W_r , according to Carnot's theorem:

$$\varepsilon_{therm}^{rev} = \frac{W_r}{(-\Delta H^\circ)} = 1 - \frac{Q_2}{Q_1} = 1 - \frac{T_2}{T_1} = 0.43 \quad \text{for e.g. } T_1 = 350^\circ\text{C and } T_2 = 80^\circ\text{C}, \quad (5)$$

where Q_1, Q_2 are the heat exchanged with the hot source and cold source, at temperature T_1, T_2 , respectively.

1.2 Proton Exchange Membrane Fuel Cell (PEMFC)

One of the first PEMFC systems was developed in 1987 by Ballard Power Systems using a new ion-conducting polymer membrane from Dow Chemical, a sulfonated fluorocarbon polymer similar to Nafion[®]. The power density achieved ($\approx 2 \text{ W cm}^{-2}$) was roughly a factor of 10 greater than that obtained for the other fuel cell systems. This may potentially lead to a significant reduction in stack size and cost compared to other fuel cells. PEMFC is now the most advanced fuel cell technology, and it can be used in several applications (space, electric vehicle, stationary power plants, portable electronics), the progress made in one application being beneficial to the others.

The main advantages of the PEMFC are that it may be operated at high current densities resulting in a power source which has a fast start capability, compact and light weight design, and where there is no corrosive fluid leakage because the only liquid present in the cell is water. Recent advances in performance and design offer the possibility of lower cost than any other fuel cell system.

The PEMFC can work either with pure hydrogen or H_2 from reformed hydrocarbon fuels, or alcohols, and on oxygen from air. The PEMFC typically operates from 65°C to 80°C . About 50% of maximum power is available immediately at room temperature. Full operating power is available within about 3 minutes under normal conditions. The low temperature of operation also reduces or eliminates the need for thermal insulation to protect personnel or other equipment.

The excess heat can be used for room heating or for residential hot water, but is not hot enough to generate steam for fuel reforming or for utility bottoming cycles. Thus, a PEMFC is well suited for use in vehicles and in portable electronics. A disadvantage associated with this type of fuel cell, however, is that Pt catalysts are required to activate the electrochemical reactions, leading to a relatively high cost of the system.

1.3 Components of a PEM elementary cell

An elementary PEMFC comprises several elements and components: the membrane-electrode assembly (MEA), the flow-field plate (bipolar plate, BP, which also ensures electric contact with the adjacent cell), gaskets to ensure tightness to reactants and end plates (Fig. 2).

1 The membrane-electrode assembly, which is the heart of the PEMFC, consists in a
2 thin (10 to 200 μm) solid polymer electrolyte (a proton exchange membrane, such as Nafion[®])
3 on both sides of which are the electrode structures (fuel anode and oxygen cathode) (Fig. 3).
4 The electrode structure comprises several layers: a first layer made of carbon paper (or cloth)
5 to strength the structure, on which are coated the Gas Diffusion Layer (GDL), and then the
6 catalyst layer (CL), directly in contact with the proton exchange membrane.
7
8
9

10 The ion exchange membrane serves as the separator between the anode where
11 hydrogen is oxidized and the cathode where oxygen is reduced. In this system, oxygen may be
12 either pure oxygen or oxygen from the air. Each electrode consists in a heterogeneous, porous
13 layer that serves as electron conductor, ion conductor, and gas transport region. The catalytic
14 reaction occurs at the three-phase contact with the catalyst. The catalyst is mainly platinum
15 dispersed on a high surface area carbon (e.g. Vulcan XC72R), but any variety of catalysts,
16 usually noble metals and their alloys, may be employed under different conditions. As the
17 gases react, protons generated at the anode cross the membrane to the cathode, whereas
18 electrons flow through the external circuit to reduce oxygen at the cathode. The membrane
19 provides ionic conduction and prevents direct reaction of the hydrogen and oxygen at the
20 platinum catalyst.
21
22
23
24
25
26

27 To produce electricity in large amounts, many cells are combined into a fuel cell stack.
28 Bipolar plates separate neighbouring cells and serve as the anode for one fuel cell and the
29 cathode for the adjacent one. To generate appropriate voltage and power, MEAs, connected
30 by bipolar plates, are assembled in stack. Current is increased by using larger electrodes and
31 stack voltage is increased by putting several elementary cells in series (filter type
32 configuration). In a system, several conditions must be fulfilled for the fuel cell to generate
33 appropriate power. The catalyst for the anode and cathode must be efficient. The membrane
34 must be highly proton-conducting and sufficiently gas-tight to avoid any leakage of the
35 potentially explosive fuel and oxidant. The catalyst layers must allow for effective and
36 balanced transport of gases, electrons, and protons. Thermodynamically, the reactions of
37 hydrogen and oxygen should give 1.23 V under standard conditions through a four
38 electron/four proton process. Fuel cells do not give this thermodynamic voltage. Several
39 important factors contribute to lower the electrical performance of PEM fuel cells. The
40 kinetics of the anode and cathode reactions is not necessarily ideal. In particular, the oxygen
41 reduction kinetics is a limiting factor, even with noble metal catalysts. The kinetics of
42 hydrogen oxidation is usually not rate limiting, but questions remain as to whether or not
43 hydrogen is the optimum fuel for a variety of fuel cell applications. These questions arise for
44 reasons of safety, cost effective production of hydrogen, and efficient storage of hydrogen.
45 Thus, the main difficulties with hydrogen fuel cells are the oxygen reduction electrocatalysis,
46 the ionic conductivity and stability of the membrane, the crossover of reactants, and hydrogen
47 storage.
48
49
50
51
52
53
54
55
56
57
58
59
60
61
62
63
64
65

1 In a PEMFC working at low temperature (20 to 90°C) several problems still need to be
2 solved to facilitate the large-scale technological development of fuel cell stacks for different
3 applications. This concerns the components of the elementary cell, i.e. the proton exchange
4 membrane, the electrode (anode and cathode) catalysts, the membrane - electrode assemblies
5 and the bipolar plates [13].
6
7

8 The proton exchange membrane, which is a solid polymer electrolyte, plays a key role
9 in the PEMFC. It allows the electrical current to pass through it due to its proton conductivity
10 and prevents any electronic current through it in order that electrons are obliged to circulate in
11 the external electric circuit to produce the electrical energy corresponding to the combustion
12 reaction of the fuel ; it must avoid any gas leakage between the anodic and cathodic
13 compartments, so that no chemical combination between hydrogen and oxygen is directly
14 allowed ; it must be stable mechanically, thermally (up to 150°C in order to increase the
15 working temperature of the cell) and chemically ; and finally its lifetime must be sufficient for
16 practical applications (e.g. > 4 000 hrs for transportation power trains or > 40 000 hrs for
17 stationary power plants).
18
19
20
21
22
23

24 The currently developed PEMFCs have a perfluorinated membrane, such as Nafion[®],
25 which partially fulfils these requirements. Nafion[®] has excellent *ex-situ* chemical stability due
26 to its perfluorocarbon backbone and the sulfonic acid groups of its side chains lead to high
27 proton conductivity. In the absence of applied pressure, its conductivity decreases above
28 100°C because of its dehydration. On the other hand it is not completely tight to liquid fuels
29 (such as alcohols). This is as more important as the membrane is thin (a few 10 µm).
30 Furthermore its current cost is high (> 500 € m⁻²), so that its use in a PEMFC for a low cost
31 passenger electric car is actually difficult.
32
33
34
35
36

37 One of the main problems of low temperature PEMFCs is the relatively low kinetics of
38 the electrochemical reactions involved, e.g. the oxygen reduction at the cathode and fuel
39 (hydrogen from a reformat gas, or alcohols) oxidation at the anode. Another problem,
40 particularly crucial for the electric vehicle, is the relatively low working temperature (70-
41 80°C), which prevents efficient exhaust of the excess heat generated by the power fuel cell.
42
43
44

45 On the other hand the intolerance of the catalysts to impurities such as carbon
46 monoxide has led to the development of high temperature resistant membranes which can
47 operate at 150-180°C. This enables the catalysts to tolerate greater impurities in the hydrogen
48 supply or from air in the oxygen supply.
49
50

51 Therefore new membranes are investigated with improved stability and conductivity at
52 higher temperatures (up to 180°C). For power FC the increase of temperature will increase the
53 rate of the electrochemical reactions occurring at both electrodes, i.e. the current density at a
54 given cell voltage and the specific power. Furthermore thermal management and heat
55 utilization will be improved, particularly for residential applications with heat cogeneration,
56 and for large scale applications to exhaust excess heat.
57
58
59
60
61
62
63
64
65

The reaction rates can be increased by the simultaneous action of the electrode potential and electrode material (this is the field of electrocatalysis) [3-5]. On the other hand increasing the working temperature, e.g. from 65 to 150°C, would greatly increase (by a factor of about 100 times, assuming an activation energy of about 65 kJ mol⁻¹, value usually encountered for the ORR, which is the main limiting process in the overall kinetics) the rates of the electrochemical reactions (thermal activation). All these combined effects would increase the cell voltage by ca. 0.1 to 0.2 V leading to values close to 0.7-0.9 V, instead of the 1.23 V theoretical cell voltage under standard conditions. The investigation of new electrocatalysts more active for the oxygen reduction and fuel oxidation (hydrogen from reformat gas, or alcohols) is thus an important challenge for the development of PEMFCs [14, 15].

The fabrication of the Membrane-Electrode Assembly (MEA) is a crucial point for a good fuel cell stack. The method currently used consists in hot-pressing (e.g. at 130°C and 35 kg cm⁻²) the electrode structures on the polymer membrane (Nafion[®]). This gives not very much reproducible results (in terms of interface resistance) and is difficult to scale-up. New concepts must be elaborated, such as the continuous assembly of the 3 elements using a roll-to-roll process (like in the magnetic tape industry), or successive deposition of the component layers (microelectronic process), etc.

The bipolar plates, which separate both electrodes of neighboring cells (one anode of a cell, and one cathode of the other), have a triple role:

- to ensure the electronic conductivity between 2 neighboring cells,
- to allow the distribution of reactants (gases and liquids in the case of alcohols) to the electrode catalytic sites, and to evacuate the reaction products (H₂O, and CO₂, in the case of alcohols),
- to provide thermal management inside the elementary cell by evacuating the excess heat. The bipolar plates are usually fabricated with non porous machined graphite or corrosion resistant metal plates. Distribution channels are engraved in these plates. Metallic foams can also be used for distributing the reactants.

A more detailed scheme of a PEMFC system, including the auxiliary and control equipments, is given in Figure 4. Fuel supply is usually from liquid hydrogen or pressurized gaseous hydrogen. For other fuels a fuel processor is needed, which includes a reformer, gas shift reactors, and purification reactors, in order to decrease the amount of CO to an acceptable level (a few tens of ppm), which would otherwise poison the platinum-based catalysts. This equipment is still heavy and bulky and limits the dynamic response of the fuel cell stack, particularly for the electric vehicle in some urban driving cycle.

1.4 Electrical characteristics of a PEM elementary Cell

Under working conditions with a current density j (different from zero) the cell voltage $E(j)$ becomes smaller than the equilibrium voltage E_{eq} as the result of reaction overvoltages η_a and

η_c at both electrodes (η is defined as the difference between the working electrode potential $E_{(i)}$ and the equilibrium potential $E_{eq}^{(i)}$), and ohmic losses.

This deviation from the thermodynamic reversible behavior leads to a decrease of the cell voltage by ca. 0.4 to 0.6 V, which reduces the energy efficiency of the fuel cell by a factor $\varepsilon_E = E(j)/E_{eq}$, called voltage efficiency ($\varepsilon_E = 0.70/1.23 = 0.57$ for a cell voltage of 0.70 V), so that the overall energy efficiency at 25°C for the H₂/O₂ Fuel Cell becomes $0.83 \times 0.57 = 0.47$.

For the elementary fuel cell, the cell voltage $E(j)$ is the difference between the cathode potential E_c and the anode potential E_a :

$$E(j) = E_c(j) - E_a(j) = E_{eq} - (|\eta_a| + |\eta_c| + R_e j) \quad (6)$$

where E_{eq} is the equilibrium cell voltage under the temperature and pressure working conditions, and R_e is the specific resistance of the cell (membrane + interfacial resistances). In the $E(j)$ characteristics one may distinguish 3 zones associated with these energy losses (Figs.5a, b, c):

- Effect of the membrane properties (Zone I): the E vs. j linear curve corresponds to ohmic losses $R_e j$ in the membrane and interface resistances; a decrease of the electric resistance R_e from ca. 0.3 to 0.15 $\Omega \text{ cm}^2$ leads to an increase of the current density j (at 0.7 V) from 0.25 A cm^{-2} to 0.4 A cm^{-2} , i.e. an increase in the energy efficiency and in the power density by 1.6 times (Fig 5a). This was experimentally observed by Ballard Power Systems when comparing the Nafion[®] and Dow[®] membranes (Fig 6) [16].
- Effect of the nature of the catalytic layer (Zone II): the E vs. $\ln(j/j_0)$ logarithmic curve corresponds to the charge transfer polarization, i.e. to the activation overvoltages due to a relatively low electron exchange rate at the electrode-electrolyte interface, particularly for the oxygen reduction reaction whose exchange current density j_0 is much smaller than that of the hydrogen oxidation: an increase of j_0 from 10^{-8} to 10^{-6} A cm^{-2} leads to an increase of the current density j (at 0.7 V) from 0.4 to 0.9 A cm^{-2} , i.e. an increase in the energy efficiency and in the power density by 3.6 times compared to the initial curve (Fig 5b). This is illustrated by the cell voltage and power density vs. current density characteristics of a Direct Ethanol Fuel Cell (DEFC) where the kinetics of ethanol electrooxidation is rather slow (Fig 7) [17].
- Effect of the structure of the gas diffusion layer (Zone III): the E vs. $\ln(1-j/j_l)$ logarithmic curve corresponds to concentration polarization which results from the limiting value j_l of the mass transfer limiting current density for the reactive species and reaction products to and/or from the electrode active sites ; an increase of j_l from 1.4 to 2.2 A cm^{-2} leads to a further increase of the current density j (at 0.7 V) from 0.9 to 1.5 A cm^{-2} , i.e. an overall increase in the energy efficiency and in the power density by 6 times compared to the initial curve (Fig 5c). This was experimentally observed for 3 different gas diffusion layer (GDL) of different composition at the air cathode: a micro-porous layer (MPL) coated with 30% wt. FEP, and 2 other FEP impregnated layers with 30 and 10 % wt. FEP, respectively (Fig 8) [18].

1 Thus these 3 key points will determine the energy efficiency and the specific power of
2 the elementary fuel cell: in these examples an improvement in each component of the cell will
3 increase the power density from 0.175 W cm^{-2} to 1.05 W cm^{-2} , i.e. an increase by a factor of
4 6. As a consequence for the fuel cell systems the weight and volume will be decreased by a
5 similar factor, for a given power of the system, and presumably the overall cost will be
6 similarly diminished. The improvement in the components of the elementary fuel cell has a
7 direct effect on the system technology and therefore on the overall cost.

8 This is summarized in Table 1, where the estimated costs of the different components
9 of the MEA (membrane, catalyst, etc.) and the total cost of the materials used in the MEA of a
10 63 kW fuel cell power train (for an electric vehicle taken as an example) are discussed
11 according to the power density of the elementary cell. Thus a target cost of 50 €/kW (EU FP7
12 and US DoE targets for the electric vehicle) can only be reached with improved performance,
13 i.e. for a power density of the MEA at least of 1 W cm^{-2} .

24 II. EXPERIMENTAL RESULTS OBTAINED IN THE GDR PACTE

25 The Research Grouping n°2985 of CNRS (GDR PACTE) aims to coordinate the research
26 activity of several teams of CNRS Laboratories involved in the basic understanding and
27 technological development of PEMFC components. In particular the investigation of new
28 catalysts, both for the ORR and for the oxidation of reformate-hydrogen and alcohols, are
29 carried out, together with the synthesis of new Proton Exchange Membranes with high proton
30 conductivity and stability at higher temperatures (until 150-180°C). Besides, some other
31 research teams focus their activity on the characterization and optimization of MEAs
32 fabricated with the components (membrane, catalysts, etc.) developed by the previously cited
33 teams.

43 II.1 Membrane Development Needs

44 In recent years, a great number of polymers have been proposed and evaluated as possible
45 electrolytes for PEMFCs, in particular for automotive application. Sulfonic acid
46 functionalized perfluorinated polymers are a class of benchmark materials having excellent
47 proton conductivity, mechanical and chemical stabilities. The Dupont Nafion[®], the 3M[™] and
48 the Solvay-Solexis Aquivion[™] membranes are representative of perfluorosulfonic acid
49 (PFSA) ionomers. These differ in one or more of the following items: length of the
50 perfluorovinyloether side chain, presence or not of pendant $-\text{CF}_3$ group, molar ratio of
51 tetrafluoroethylene (TFE) and side-chain functionalized TFE, all of which impart specific
52 properties. For example, a shorter side chain without the pendant CF_3 group gives a polymer

1 of higher crystallinity and higher glass transition temperature at a given polymer equivalent
2 weight (EW) or ion exchange capacity (IEC). Aquivion™ membranes have been operated at
3 temperatures up to 110-120°C in stacks developed in the FP6 Autobrane "automotive fuel cell
4 membranes" project [19], and they represent a viable option for automotive and small
5 stationary applications, although their long-term durability at higher temperatures must be
6 increased. With the trend to higher temperature of operation, and the requirement for higher
7 performance, recent developments have tended towards low EW PFSA polymer membranes,
8 having a high density of sulfonic acid groups, and in the use of membranes of thickness only
9 25-30 μm (compared with the use of membranes of ca. 175 μm some 10 years ago), thin
10 membranes being required for their low area specific resistance. In particular, in conditions of
11 use of stop/start or load cycling, the variation in relative humidity causes membrane swelling
12 and contraction particularly exacerbated in low EW polymer membranes. In this respect, short
13 side chain PFSA polymer membranes such as Aquivion™ appear to have some advantages
14 over long side chain Nafion® type membranes due to a higher degree of crystallinity as
15 indicated by heat of fusion data. Nevertheless, in such membranes unsatisfactory mechanical
16 properties remain a limitation for cell and stack lifetime.

17
18
19
20
21
22
23
24
25
26
27
28
29
30
31
32
33
34
35
36
37
38
39
40
41
42
43
44
45
46
47
48
49
50
A series of approaches for the covalent cross-linking of PFSA's in order to improve
membrane mechanical properties and reduce membrane swelling in the presence of water
have been screened and are under further development. On the one hand, novel side-chain
component multifunctional monomers have been developed that are cross-linkable after
membrane fabrication, and can lead, for example, to triazine, or perfluorobutyl cross-links
[20]. On the other hand, methodologies have been devised for cross-linking of low EW
membranes in sulfonyl fluoride precursor form, with subsequent conversion to the sulfonic
acid form [21]. In all cases, the degree of cross-linking must be fine-tuned in order to achieve
the required mechanical stabilization without detriment to the proton conductivity. The
reactive cross-linking procedures have been designed to meet with both solution casting and
extrusion techniques for large scale manufacture of membranes. The cross-linking of long
side chain PFSA through sulfonimide bridges is shown in Figure 9.

51
52
53
54
55
56
57
58
59
60
61
62
63
64
65
Characterization of the degree of cross linking is not trivial in such systems; however
recent work has shown the use of X-ray photoelectron spectroscopy to demonstrate
unequivocally the presence of sulfonimide groups [22], while indirect evidence for cross-
linking is inferred by the significant reduction in water uptake and dimensional swelling in the
cross-linked membranes (Fig. 10).

Many significant advances have been made in the design and development of a broad

1 range of polymers and membranes as alternatives to conventional PFSA type [23]. These
2 materials generally have more facile preparation routes, and are less costly than perfluorinated
3 materials. These new materials have primarily explored radiation induced graft
4 polymerization on per- or partially fluorinated aliphatic polymers [24], and development of
5 sulfonated aromatic or heterocyclic polymers, in particular polysulfones [25],
6 polyetherketones [26], polybenzimidazoles [27] and polyimides [28], in which the protogenic
7 groups are covalently bound either to the polymer backbone or via a spacer. Polyaromatic
8 polymers have generally been preferred because of their thermal and chemical stabilities. PBI
9 polymers are particularly thermally and chemically stable and novel ether-linked
10 polybenzimidazoles can be functionalized by direct sulfonation in heterogeneous [27] or
11 homogeneous [29] media, with control both of the degree and the site of sulfonation reaction.
12 Appropriate polymer design also allows for discriminatory cross-linking between polymer
13 chains. A recent example is the direct sulfonation in solution of poly(arylene ether
14 benzimidazole), poly[(1-(3,3'-phthalido-*p*-phenylene)-5-oxylbenzimidazole)-benzimidazole]
15 (PBI-OPh) (Fig. 11), for which the effect of the nature of the sulfonating agent (concentrated
16 or fuming sulfuric acid), temperature and duration of the reaction on degree and site of
17 sulfonation (using 2D COSY ^1H NMR) were investigated [30]. At all reaction temperatures
18 studied, only the sites located in proximity to the ether linkages of the polymer are sulfonated
19 using concentrated H_2SO_4 , while the use of fuming sulfuric acid allows sulfonation also of
20 less electrophilic sites, and the preparation of samples with a high degree of sulfonation
21 (> 430%). The difference in the distribution of sulfonic acid groups in samples prepared by
22 sulfonation in concentrated or fuming sulfuric acid affects the observed water uptake
23 properties and proton conductivity, the most highly conducting samples (25 mS cm^{-1} at 25°C
24 and 100% relative humidity) being those in which percolation is favored through substitution
25 concomitantly at the ether-linked and Cardo segments of the polymer (Fig. 11).
26
27
28
29
30
31
32
33
34
35
36
37
38
39
40
41
42
43
44

45 All the above materials have relied on the presence of water as proton carrier.
46 Although practicable at lower temperatures, water management at temperatures higher than
47 100°C has a significant impact on the viability of the membrane electrode assembly (MEA)
48 and on the overall operation of the system. Over the last decade, new concepts have evolved
49 engaging alternative proton carriers that mark a move towards reducing the need for high
50 levels of hydration of the fuel cell membrane [31]. The ideal protogenic group in a "quasi-
51 anhydrous" membrane environment should be amphoteric, exhibit proton donor and acceptor
52 properties and show a high degree of self-dissociation. It also should have a high dielectric
53
54
55
56
57
58
59
60
61
62
63
64
65

constant to enhance the charge separation and be stable under fuel cell operation conditions. Acid-doped polybenzimidazole, in which the phosphoric acid electrolyte is in liquid form in a non-functionalised polymer matrix [32], may be considered as a prime example. Fuel cells incorporating these membranes have reached a certain level of technological maturity for use in MEAs operating above 150°C, with stack and system being commercially available. However this type of membrane is presently not suitable for operation at temperatures lower than 100°C or under automotive conditions, where water can condense and dilute or leach the electrolyte, and further efforts are required to immobilise the protogenic groups, for example as phosphonic acid groups on a polymer backbone. While early work on model compounds or polymers having a low concentration of grafted phosphonic groups led to electrolytes of rather low conductivity [33], on-going investigations have identified two factors important for high intrinsic conductivity: firstly that a high local concentration of phosphonic acid groups is required and secondly that membrane morphology is of great importance since it is essential that the acidic groups be able to locally cluster into phosphonic acid rich domains [34]. Recent work in collaboration with BASF Fuel Cell has demonstrated particularly encouraging fuel cell performance for high temperature PEMFC using membranes based on PBI and poly(vinylphosphonic) acid. With this high temperature ionomer, performance increases with temperature (to 190°C) and with pressure, and for operation on hydrogen and air hydrated respectively at 80 and 64°C, a power density of 0.5 W cm⁻² is obtained at 160°C and 3 bar abs (Fig. 12) [35]. Under conditions of accelerated thermal ageing at 190°C, 3000 h of operation were reached, with a cell voltage degradation rate of ca. 10 μV h⁻¹.

II.2 New preparation methods of efficient electrode catalysts

According to equation (6) in section I.4, for a given solid electrolyte (of known specific resistance R_e), the increase of the potential efficiency of a fuel cell is directly related to the decrease of the overpotentials of the oxygen reduction and fuel oxidation reactions, and needs therefore the enhancement of the catalyst activity at low overpotentials. Until now, platinum appears unavoidable as a catalytic material for activating the oxygen reduction reaction and fuel dissociative adsorption. In the case of PEMFCs, the decrease of platinum loading is relatively easy at the anode due to very high hydrogen oxidation reaction kinetics, whereas the oxygen reduction reaction (ORR) is known to greatly limit the PEMFC performances [15]. However, in the case of Direct Alcohol Fuel Cells (DAFCs), both electrodes display low reaction kinetics [15]. Due to its high cost and low availability on earth, the decrease of platinum loading in fuel cell electrodes is one of the main issues for a

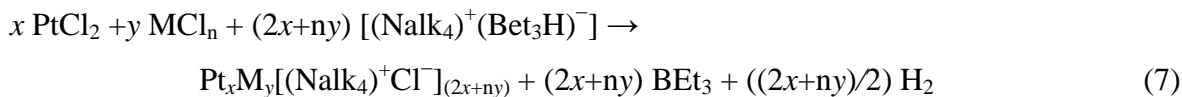
large scale development of PEMFCs and DAFCs.

To decrease the amount of platinum, several solutions have been proposed: decrease of the platinum particle size, localization of the platinum layer as close as possible to the electrolytic membrane, synthesis of bimetallic platinum-based catalysts and development of non platinum-based catalysts. Non-noble metal catalysts based on chalcogenides [36-39] and macrocycles of transition metals [40-44] have shown good activity for the ORR. However these materials did not yet match the catalytic activity of dispersed platinum. To achieve economic metal loadings, fuel cell electrodes have to be designed from Pt nanoparticles ($d < 5$ nm) supported on high-surface-area carbon black, such as Vulcan XC72R. Indeed, for the ORR the specific activity (SA in $A\text{ cm}^{-2}_{\text{Pt}}$) decreases when decreasing the particle size, while SA for larger particles ($d > 5$ nm) is approximately the same as for the smooth platinum electrode [45]. As a result, the plots of mass activity (MA in $A\text{ g}^{-1}_{\text{Pt}}$) versus particle size for oxygen reduction in a sulfuric or a phosphoric acid electrolyte exhibit a marked maximum at $d = 3.5$ nm [45]. Ultra-low Pt loading electrodes (anodes and cathodes) prepared by plasma sputtering technique have led to excellent fuel cell performance (see section II.4). This was partly explained by a very high platinum utilization efficiency, due to its localization very close to the membrane leading to increase the density of the triple phase boundary where electrochemical reactions occurs [46].

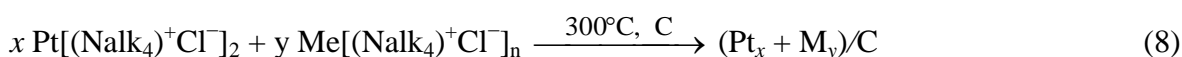
Numerous studies have shown that platinum-based binary electrocatalysts such as PtFe, PtCo, PtNi, and PtCr exhibit a higher catalytic activity for the ORR in acid electrolytes than pure platinum [47-53]. For alcohol oxidation, Pt-based bimetallic catalysts were also developed in order to increase the anode activity and selectivity [54-57]. Because all considered reactions in fuel cells are known to be structure sensitive, a versatile catalyst synthesis method, derived from a colloidal route developed by Bönemann et al. [58-62], has been used and slightly modified to obtain multimetallic platinum-based materials. This method allows varying easily the foreign metal nature, the atomic composition and the microstructures of the catalysts [61, 62]. The synthesis is carried out under a controlled atmosphere (argon) free of oxygen and water, with non-hydrated metal salts (99.9% PtCl_2 , RuCl_3 , SnCl_2 , CoCl_2 , NiCl_2 , FeCl_2 , etc., from Alfa Aesar). Briefly, the first step consists in the preparation of a tetraalkyl triethylborohydride reducing agent $(\text{Nalk}_4)^+(\text{Bet}_3\text{H})^-$, which will also act as a surfactant after metal salt reduction, preventing any agglomeration of the metallic particles. The colloidal precursors are then dispersed on a carbon support (e.g. Vulcan XC72 thermally treated at 400°C under a nitrogen atmosphere for 4 h in order to clean it) and thermally treated at 300°C for 1 h under air atmosphere to remove the organic surfactant, in

order to obtain a metal loading of 40 wt%. Different possibilities for the synthesis of supported multi-metallic catalysts are allowed:

(1) Synthesis of catalysts with a controlled atomic ratio by co-reduction of different metal salts and formation of the colloid precursor before the deposition step on carbon (Fig. 13a):



(2) Synthesis of catalysts with a controlled atomic ratio by co-deposition of different metal colloids before the thermal treatment step and formation of the catalytic powder (Fig. 13b):



TEM pictures were recorded to check the dispersion of Pt/XC72 catalysts, as well as to determine the mean apparent particle size. Figure 14a shows, as an example, a typical TEM micrograph of a freshly prepared Pt(30 wt%)/XC72 catalytic powder. Platinum particles look round-shaped and are relatively well dispersed on the carbon support, although some entities with misshapen aspects are visible. For this reason, the Feret diameter, which takes into account the particle shapes, was used to establish the size distribution. The related histogram realized by counting isolated platinum entities is given in Figure 14b. A mean particle size d_{TEM} of 2.4 ± 0.4 nm is calculated. Table 2 gives the structural data determined for bimetallic PtRu catalysts, with an atomic ratio 0.8(Pt)/0.2(Ru) as an example. The co-reduced $\text{Pt}_{0.8}\text{Ru}_{0.2}/\text{C}$ catalyst displays well dispersed particles with a narrow size distribution (Fig. 15a), a mean particle size close to 2 nm and an alloy character as determined in a previous work from XRD measurements [61], whereas the co-deposited $(\text{Pt}_{0.8}+\text{Ru}_{0.2})/\text{XC72}$ catalyst displayed also a mean particle size close to 2 nm, but analysis of the XRD pattern (Fig. 15b) indicated that the compound was not an alloy, but looked like particles of platinum in strong interaction with smaller ruthenium particles, maybe a decoration of platinum particles by very small ruthenium particles.

PtRu catalysts are very active for the oxidation of carbon monoxide arising either from the dissociative chemisorption of many alcohols (methanol, ethanol, etc.) or contained in small amounts into reformat gases. In both cases the presence of Ru allows CO to be oxidized at lower anodic potentials than at pure Pt electrodes, thus preventing the deactivation of Pt catalysts by strong poisoning of the active sites. As previously shown [63], platinum particles decorated with ruthenium (i. e. PtRu catalysts obtained via the co-deposition process) displayed higher activity towards the oxidation of hydrogen in a reformat gas or methanol than alloyed particles of the same atomic composition. The best composition of

PtRu catalysts depends greatly on the working potential [61]. This fact can be related to the change in the rate-determining step as a function of potential.

PtM catalysts (M = Co, Fe, Ni) were also synthesized for the ORR. In the case of nominal Pt_{0.75}M_{0.25}/XC72 catalysts as examples, TEM analyses showed that the mean size of isolated particles was in the range of 2.0 – 2.5 nm (Table 3). EDX analyses allowed to evaluate the bulk catalyst atomic compositions and to compare them with the nominal one. The PtFe catalyst displayed a bulk composition close to the nominal one, whereas the PtCo and above all the PtNi catalyst were platinum rich. Different reasons could be invoked to explain this fact, as for example: i) the metal salt solubility in THF (used as solvent in the Bönemann's method) could be different; ii) the reduction kinetics of metal salt could also be different, which could lead to the enrichment of the particle surface by the less noble metal, followed by dissolution (de-alloying) during the cleaning step of the particles. XRD patterns of the different PtM/XC72 catalysts (Fig. 16) display the typical diffraction peaks of the platinum fcc structure. On the one hand, the analysis of the patterns showed that the crystallite size of bimetallic catalysts was close to that of the Pt/XC72 sample, i.e. close to (2 nm). On the other hand, a low contraction of the cell parameter could be detected (shift of the diffraction peaks toward higher 2θ values). This low cell parameter contraction (ca. 2 pm for PtCo and 6 pm for PtNi and PtFe) is related to the fraction of the second metal in the alloy.

The active surface area, as calculated by integrating the charge in the hydrogen adsorption–desorption region of a cyclic voltammogram recorded at a sweep rate of 20 mV s⁻¹ in N₂-saturated electrolyte, was found to be ca. 50 m² g⁻¹ for PtFe/C, 55 m² g⁻¹ for PtNi/C and 65 m² g⁻¹ for PtCo/C, comparatively to 45 m² g⁻¹ for Pt/C.

The oxygen reduction reaction was studied by rotating disc electrode (RDE) voltammetry recorded at 3 mV s⁻¹ and with an electrode rotation rate of 2500 rpm; the kinetics data (Tafel slopes, limiting current density and kinetic current density) were evaluated from the Koutecky-Levich equation. Figure 17 and Table 3 indicate that all bimetallic catalysts lead to higher catalytic activity towards the ORR as higher current densities are recorded at high electrode potentials. The PtCo/XC72 catalyst, although being that displaying the lower alloying ratio, leads to the higher kinetic current density measured at 0.95 V vs. RHE. The activity order is: Pt < PtNi ~ PtFe < PtCo. On the other hand, it was checked using a rotating ring disc electrode (RRDE) that no hydrogen peroxide was formed on the catalytic electrode from 1.1 V to 0.7 V vs. RHE. Then, replacing 10 to 20% of the platinum atoms by a non noble metal leads to increase the catalytic activity without modifying the selectivity towards water production. The observed electrocatalytic enhancement was interpreted either by an

1
2
3
4
5
6
7
8
9
10
11
12
13
14
15
16
17
18
19
20
21
22
23
24
25
26
27
28
29
30
31
32
33
34
35
36
37
38
39
40
41
42
43
44
45
46
47
48
49
50
51
52
53
54
55
56
57
58
59
60
61
62
63
64
65

electronic effect, i.e. the change of the "d band" vacancy in Pt upon alloying, and/or geometric effects (Pt coordination number and Pt–Pt distance). Both effects may enhance the reaction rates of oxygen adsorption and of the breaking of the O-O bond during the reduction reaction. For example, the lattice parameter a_0 in the case of a cubic PtX catalyst (X = Fe, Co, Ni) decreases with an increase of the amount of the alloying component X leading to a variation in the catalytic behavior. In the case of PtNi alloys the maximum electrochemical activity for ORR was found to be at 30 at% Ni [51]. Different works available in the literature pointed out several interesting properties of PtCo alloys as catalysts for the ORR: a higher active surface area [64], an increase of the free 5d electronic orbital density [51], a more favorable Pt-Pt interatomic distance [65], and hence a more favorable surface structure for the ORR, and even a better resistance towards sintering [66].

Platinum cluster deposition by plasma sputtering is an other suitable way for decreasing the catalyst loading onto relevant material supports, e.g. gas diffusion layer supported on carbon cloth or paper. The simple exposure of an un-catalyzed gas diffusion layer to a flux of platinum atoms leads to the diffusion of the metal atoms into the gas diffusion layer (GDL) to a sufficient depth. Low Pt loading electrodes can be produced leading to achieve convenient fuel cell performance. Plasma sputtering has thus the advantage of controlling the depth profile and reducing the amount of catalyst by localizing the catalytic material as close as possible to the electrolyte membrane [67-76]. Platinum can be sputtered in many manners depending on the plasma sources. Magnetron sputtering and Inducing Coupled Plasma (ICP) sputtering are the main ways to handle deposition of the required Pt nanoclusters [68-75], allowing preparing different kinds of platinum-based thin films. The control of the deposition parameters (target composition, chamber pressure, bias voltage applied between the targets and the substrate, energy of the plasma, distance between target and substrate, etc.) allows to control the deposited quantity, the film morphology, and the depth repartition of platinum inside the gas diffusion layer. Figure 18a shows as an example a typical scanning electron microscopy image obtained after deposition by plasma sputtering of $80 \mu\text{g}_{\text{Pt}} \text{cm}^{-2}$ on a Gas Diffusion Layer. The carbon support appears completely recovered by a platinum film made of compacted platinum clusters in the size range from 1 to 5 nm. An interesting feature of plasma sputtering deposition is the layered structure. It is often a columnar structure (Figs. 18b and c) due to low lateral mobility of atoms at ambient temperature deposition. Such a structure is meaningful for PEMFC electrodes. Indeed, co-deposition or alternate deposition of carbon and platinum can lead to multilayer C-Pt catalysts or carbon columns decorated by a gradient of Pt nanoclusters [77, 78]. Moreover, the

1 structures of Gas Diffusion Electrodes (GDE) prepared either by alternate deposition or by co-
2 deposition (from a target composed of 1 wt% Pt and 99 wt% C) of platinum atoms and carbon
3 atoms on the GDL are completely different, as SEM images of the cross section of the GDEs,
4 given in Figures 18b and c, show clearly that the density of platinum is higher on the top of
5 the GDE in the case of the alternate deposition, whereas its repartition seems more
6 homogeneous in the case of co-sputtering. The reduction of the Pt quantity can be
7 successfully achieved due to the Pt concentration profile in the GDL, penetrating to a
8 shallowness of the GDL (over a thickness of 200 - 700 nm) and exhibiting a decreasing
9 platinum amount from the side being in contact with the polymer electrolyte to the depth of
10 the GDL (Fig. 19). Due to this controlled localisation of platinum clusters in the GDL, the
11 reduction of the platinum amount to surface concentrations ranging from $0.1 \text{ mg}_{\text{Pt}}\text{cm}^{-2}$ down
12 to $0.01 \text{ mg}_{\text{Pt}}\text{cm}^{-2}$ has been achieved [76, 79-81]. Figure 20 shows a comparison of the
13 polarization curves and power density curves obtained for several MEAs with low platinum
14 loadings prepared via plasma sputtering and a classical MEA fabricated with electrodes
15 loaded at $0.35 \text{ mg}_{\text{Pt}} \text{ cm}^{-2}$ (Pt/C catalyst from E-tek). Remark that the maximum power density
16 of the cells fitted with plasma electrodes is only reduced by a factor 2 comparatively to the
17 classical MEA, whereas the platinum loading in the electrodes was decreased by factors
18 ranging from 3.5 to 35. Very high specific power density from 1 to $20 \text{ kW g}_{\text{Pt}}^{-1}$ could thus be
19 achieved with such electrodes, as seen in Figure 21 [81]. Such a result is the greatest
20 performance obtained to date, as recognized recently [82]. It should be noticed that,
21 conversely to classical MEA [83, 84], no Nafion[®] solution is added in the electrode catalytic
22 layers before testing them in a 5 cm^2 PEMFC fed with pure H_2 and O_2 gases and no hot
23 pressing is necessary. This confirms that the localisation of platinum the nearest as possible to
24 the membrane leads to increase its utilization efficiency. Moreover, the process for fabricating
25 MEAs is simplified, which leads to decrease their cost.

26
27
28
29
30
31
32
33
34
35
36
37
38
39
40
41
42
43
44
45
46
47
48
49
50
51
52
53
54
55
56
57
58
59
60
61
62
63
64
65
The deposition of Pt alloy is also easily available using such a technique by simply
adding one or more targets facing the substrate, e.g. carbon cloth of paper. In this case, the
various possibilities in powering the targets will lead to different compositions and structures
of the growing catalyst clusters. Simultaneous and alternate depositions are expected to
explore the various possible structures: alloyed nanoclusters, separated pure elements
nanoclusters and core shell nanostructures [85].

II.3 Characterization of the MEA by Electrochemical Impedance Spectroscopy

Electrochemical Impedance Spectroscopy (E.I.S) is a very powerful characterization

1 technique, which allows separating and characterizing the various phenomena involved in
2 electrochemical systems in order to optimize the whole process [86]. The ac impedance
3 technique considered for PEMFC, has been increasingly used in recent years, particularly for
4 characterizing MEA. Most of the EIS studies have been focused rather on the optimization of
5 cathode structure and composition [87] (i.e. catalyst utilization and performance) than on the
6 understanding of kinetic mechanisms [88]. Many studies investigated phenomena occurring in
7 the active layer, and some attention has been paid to the transport limitation inside the gas
8 diffusion layer [89].

9
10
11
12
13
14 EIS appears to be of great interest for providing a better understanding of transport and
15 transfer limitations in PEMFCs. Some theoretical works have been devoted to predicting the
16 direct (dc) and alternating current (ac) responses of the active layer [90] and the ac behavior
17 of the gas diffusion layer [91]. For PEMFC, experimental impedance diagrams exhibit one or
18 two depressed semicircle depending on the operating conditions.

19
20
21
22
23 PEMFCs should be able to operate at high current densities with an acceptable
24 efficiency, i.e. at a relatively high cell voltage ($E_{\text{cell}} > 0.7$ V). Losses inherent to high current
25 densities are ohmic losses and slow gas diffusion to the electrodes. These transport limitations
26 add to the limited interfacial kinetics of the Oxygen Reduction Reaction (ORR) and Hydrogen
27 Oxidation Reaction (HOR) in the active layer.

28
29
30
31
32 The MEA has to be optimized to allow supplying the reactant species (O_2 and H_2) and charges
33 (H^+ , e^-) to the three phase boundary interfaces.

34 Ac response of the active layer

35
36
37
38 For low current densities when mass and charge transport limitations remain negligible, the
39 electrode impedance is represented in the complex plane plot by only one semicircle which
40 corresponds to the contribution of charge transfer resistance in parallel with the double layer
41 capacitance. As expected, the semicircle diameter decreases when the current density
42 increases.

43
44
45
46
47 Conversely, when diffusion in the active layer is partly controlling the kinetics
48 process, it is well-known that a limiting current behavior does not occur, but rather a doubling
49 of the effective Tafel slope in a steady-state polarization curves [92] and a capacitive loop
50 may be distinguished at low frequency (Fig. 22). Nevertheless, the separation of the charge
51 transfer resistance and diffusion arcs clearly appears only when considering a very small
52 double layer capacitance: decreasing the double layer capacitance leads to shift the frequency
53 domain of the charge transfer arc towards higher frequencies [93]. It means that the formation
54 of a capacitive loop at low frequencies is directly related to concentration gradient for
55
56
57
58
59
60
61
62
63
64
65

dissolved oxygen in the active layer. Therefore, the contribution of diffusion in the active layer appears in the complex plane plot as a nearly perfect semicircle according to other authors.

In agreement with previous studies, the diffusion limitation effect within active layers on polarization curves and impedance spectra for GDE is only partial. Under diffusion control, the tendency to a doubling of the apparent Tafel slope in the dc response corresponds to a polarization resistance, which is at most twice the charge transfer resistance in the ac response. However the active layer situation alone never leads to such a limiting current, because catalyst particles are always present in a region of nonzero concentration close to the active layer/diffusion backing interface. Moreover, a straight line at a 45°-angle could be respectively distinguished in the high-frequency limit. Such a behavior could be attributed to ionic transport into the active layer, which dominates the overall electrode response for high frequencies in the case of low ionic conductivity.

The influence of the active layer thickness (L) and roughness factor (γ) has been investigated by using a previous published model [93]. The general model is limited to a one-dimension and considers the effects related to ohmic losses and losses due to diffusion within the active layer, interfacial charge transfer and double layer charging. This one-dimensional dc and ac model of the active layer can be developed by considering conservation of mass and charge, transport of species and the reaction kinetics. On the one hand, the equation of continuity for a species X_i in the electrolyte can be written classically for a porous media as:

$$\frac{\partial[X_i]}{\partial t} - D^{\text{eff}} \frac{\partial^2[X_i]}{\partial x^2} + \frac{\gamma}{L} \frac{j_f}{n_e F} = 0 \quad (9)$$

where D^{eff} represents the effective diffusion coefficient, n_e the exchange number of electron, F, the Faraday's constant and j_f the current density.

On the other hand, Ohm's law in the electrolyte phase, the continuity equation which describes the transformation of reacting species into electronic current via faradic processes and the double layer charging, must be taken into account [93]. This leads to the charge balance equation:

$$\frac{\gamma}{L} C_{\text{dl}} \frac{\partial \eta}{\partial t} - \kappa^{\text{eff}} \frac{\partial^2 \eta}{\partial y^2} + \frac{\gamma}{L} j_f = 0 \quad (10)$$

where η is the overpotential and κ^{eff} the effective ionic conductivity.

For sake of simplicity, a one-step mechanism is assumed in order to describe kinetic processes at the GDE. As an example, we can consider the simplified single 4-electron step

mechanism, which is often assumed for the ORR mechanism in acidic and alkaline media. For such an electrochemical reaction involving two reacting species and occurring at the catalyst surface in the active layer, the current density j_f per unit of catalyst surface area is given by:

$$j_f = j_o \left[\exp\left(\frac{\alpha_o F}{RT} \eta\right) \frac{[X_1]}{[X_1]_0} - \exp\left(\frac{-\alpha_r F}{RT} \eta\right) \frac{[X_2]}{[X_2]_0} \right] \quad (11)$$

Table 4 summarizes the parameters used for simulation.

Figure 22 presents the theoretical influence of the catalyst layer properties on the ac response. An increase of the catalyst loading (i.e. larger catalyst layer) enhances the polarization resistance of the GDE active layer. Conversely, better performances are obtained when considering a thinner active layer i.e. using smaller catalyst particles for example. This means that smaller catalyst layer allows better catalyst utilization.

Previous published results [94] highlighted the influence of catalyst gradients on PEMFC performances. The catalyst utilization efficiency depends on the diffusion and ionic ohmic drop limitations. For a porous active layer, performances are improved when the catalyst particles are located close to the active layer | membrane interface. Conversely, for a non-porous active layer, best performances are obtained when the catalyst particles are located close to the gas diffusion layer. These results show that the optimal catalyst utilization is observed with a thin active layer improving the catalyst access.

Ac response of the gas diffusion layer

Experimental impedance spectra exhibit a large capacitive loop in the Nyquist plane at low frequency (1-10 Hz) but it is intimately intertwined with capacitive arcs which are created by charge-transfer, double layer capacitance and mass-transport limitations within the active layer [91]. These results demonstrate that slow oxygen diffusion in the diffusion layer is a major concern, especially with non-optimized diffusion layers. Among the various microstructural parameters, the gas diffusion layer porosity plays an important role on the gas access to the triple phase boundary.

The Stefan-Maxwell equations allow us to describe diffusion of gaseous species in the GDL. Based on this description of the GDE, the solution is obtained from the mass-balance equation within the gas diffusion layer:

$$\varepsilon^{\text{GDL}} c_T \frac{\partial X_i}{\partial t} = - \frac{\partial N_i}{\partial x} \quad (12)$$

where ε^{GDL} is the porosity and N the flux. The fluxes within the GDL are governed by the Stefan-Maxwell equation for multi-component diffusion:

$$c_T \frac{dx_i}{dx} = \sum_{j \neq i} \frac{x_i N_j - x_j N_i}{D_{ij}^{\text{eff,GDL}}} \quad \text{and} \quad \sum_i x_i = 1 \quad (13)$$

where D_{ij} are the binary diffusion coefficients.

Figure 23 presents simulated impedance diagrams of Gas Diffusion Electrode varying the gas diffusion layer porosity. Simulations were performed by using a previous published model [91].

According to classical models of gas diffusion electrodes, processes characteristic of oxygen diffusion within both gas diffusion and active layers may appear in the impedance spectra. At high current densities, theoretical approaches predict that these mass-transport processes should split the electrode impedance into three arcs corresponding to kinetics, diffusion in agglomerates and diffusion in the GDL. None of these arcs can be seen separately in the experimental impedance spectra due to a masking effect of the large value of the double layer capacitance at the electrode/electrolyte interface. In this theoretical case, one high and one moderate frequency semi-circle related to charge transfer and oxygen diffusion within the agglomerates, respectively, are observed and at low frequency a restricted Warburg impedance, due to O_2 diffusion in the GDL, is also predicted. This last contribution is strongly affected by the porosity of the gas diffusion layer. It is well-known that the gas diffusion layer properties have to avoid water flooding the gas pores. So the presence of liquid water on the pore walls may reduce the gas diffusion porosity available for gas transport.

II.4 Optimization of the Membrane-Electrode Assembly

The development of the elementary components (membranes, catalysts) is of course necessary but not sufficient for optimizing the fuel cell electrical performance. The improvement of the membrane electrode assembly, of the cell assembling and also the determination of the best configuration of the cell working parameters (gas temperature, hydration, pressure and flow of reactants, and operating cell temperature) [95] may have a great influence on the cell electrical response.

In order to improve the Membrane Electrode Assembly performance, hot pressing of electrodes against a membrane is often carried out. Such a simple method for the MEA fabrication allows obtaining a good interface between the protonic membrane and the electrode active layers. The hot pressing method consists in thermo-welding two Nafion-containing gas diffusion electrodes against a Nafion[®] membrane, under some experimental conditions. However, the physical phenomena relative to such process are not yet well known. The structure of MEAs can dramatically vary during the hot pressing process due to relatively

1 high temperatures (from 100°C to 160°C) and pressures (20 to 100 kg cm⁻²) [96], which can
2 provoke some irreversible losses in the fuel cell performance. Several works were focused on
3 the optimization of the hot pressure procedure [86, 97, 98], but the question remains still
4 open.
5

6
7 However, it was clearly shown by Le Ninivin et al. that hot pressing a Nafion-
8 containing electrodes against a Nafion[®] 117 membrane at 130°C under 35 kg cm⁻² for 3 min
9 led to improve the DMFC performance by a factor 3 [99]. Moreover, the determination of the
10 optimal ionomer content in the electrodes is also an important factor for improving the fuel
11 cell performance. For example, recent works indicated that the content of the Nafion[®]
12 ionomer in the cathode catalyst-layer of a PEMFC, made by the “decal” hot pressing method,
13 have an important effect on performance within the entire region of polarization curves (i.e.
14 kinetics, ohmic, and mass-transport regions) as well as on the electrode structure. The authors
15 determined an optimized Nafion[®] content in a range of 27±6 wt% for a cathodic E-TEK 20%
16 Pt₃Cr/C catalyst with a loading of 0.20 mg_{Pt} cm⁻² [100].
17

18
19 Assembling cells in series is also a delicate procedure, which has a very important
20 influence on the stack performance. Special attention has to be paid for the correct assembling
21 of fuel cells, in particular, for the choice of the bolt torque that clamps the elementary cells
22 together. The importance of this factor has been discussed by Lee et al. [101]. A correct
23 choice for the bolt torque (8 Nm) allows obtaining well reproducible results for each type of
24 MEA used in our experiments as it was showed in previous works [102, 103].
25

26
27 Fuel Cell experiments were carried out with a single PEM fuel cell (surface area of 5
28 cm×5 cm). The beneficial effect of the cell assembling procedure is confirmed in Figure 24,
29 where excellent reproducible cell performance of almost 1.3W cm⁻² has been recorded with a
30 MEA fabricated with Pt/C catalysts synthesized via the Bönemann colloidal method as
31 described in section II.2. Electrodes (platinum loading of 0.35 mg_{Pt} cm⁻² in both electrodes)
32 are pressed against a Nafion[®] 112 membrane. Before the development of optimized procedure
33 of cell assembling, only 0.5W cm⁻² could be achieved with the same assembly [104, 105].
34

35
36 The MEA fabricated with electrodes prepared via the colloidal route (MEA 3 in Fig.
37 25) made possible to obtain a maximum power density higher than 1.2 W cm⁻² with a total
38 catalyst loading of 0.7 mg_{Pt} cm⁻², which corresponds to a specific power density of 1.7 W
39 mg_{Pt}⁻¹. This is more than two times higher than that obtained with a commercial MEA., e.g.
40 from Fuel Cell Store (FCS) leading to 0.9 W cm⁻² with a total platinum loading of 1.2 mg_{Pt}
41 cm⁻², corresponding to 0.75 W mg_{Pt}⁻¹ as shown in Figure 25.
42

43
44 The method of catalyst deposition by plasma sputtering was also used to further
45
46
47
48
49
50
51
52
53
54
55
56
57
58
59
60
61
62
63
64
65

1 decrease the total catalyst amount down to $0.45 \text{ mg}_{\text{Pt}} \text{ cm}^{-2}$ (cathode $0.35 \text{ mg}_{\text{Pt}} \text{ cm}^{-2}$ by
2 colloidal route / Nafion[®] 112 / anode $0.1 \text{ mg}_{\text{Pt}} \text{ cm}^{-2}$ from plasma sputtering process). Very
3 interesting performances (close to 0.7 W cm^{-2}) were obtained with such a low-platinum
4 loading in MEA 1. This performance corresponds to a platinum utilization efficiency of *ca.*
5 $1.6 \text{ W mg}_{\text{Pt}}^{-1}$, which is two times higher than that obtained with a commercial MEA from Fuel
6 Cell Store (FCS). It is important to note that the decrease of the platinum loading is easier at
7 the anode side than at the cathode side, as expected. Figure 26 illustrates this fact by
8 comparing the cell performance obtained with the same MEAs as MEA 1, but with the low Pt
9 loading electrode used either as anode or as cathode. When used as cathode the low Pt loading
10 electrode leads to a dramatic decrease of the cell performance down to 0.45 W cm^{-2} , which is
11 two thirds of the maximum power density achieved with MEA 1 in Figure 25.

12 Then, considering that plasma sputtering is a clean and well-controlled procedure used
13 by microelectronic manufacturers, it could be a good way for the fabrication of fuel cell
14 electrodes and/or MEAs. Moreover, the powerful method of plasma sputtering let foresee the
15 possibility of optimization of the platinum deposition (structure of the platinum thin film,
16 particle size, depth profile, etc.) to decrease precious metal loading and to increase the fuel
17 cell performance.

31 CONCLUSIONS

32 This paper has first discussed the effects of the properties of the MEA components on
33 the electrical characteristics of a PEM elementary cell, then presented some experimental
34 results obtained in the development of medium and high temperature membranes, in the
35 achievement of low Pt loading of the electrode active layer by improved synthesis methods,
36 and in the characterization and optimization of the MEA.

37 The most important key factor to decrease the volume, weight and cost of a PEMFC
38 system is to increase the electrical characteristics of the MEA by improving the properties of
39 its components (membrane, electrode catalysts, gas diffusion and active layers, etc.).

40 We have described here some novel membrane systems adapted for the medium
41 temperature (cross-linked low equivalent weight PFSA, novel hypersulfonated polybenzimid-
42 azoles) and high temperature ranges (PBI-polyvinylphosphonic acid membranes), the latter
43 being able to work up to $190 \text{ }^{\circ}\text{C}$ and leading to a power density of 0.5 W cm^{-2} at $160 \text{ }^{\circ}\text{C}$ under
44 3 bars abs with hydrogen and air.

45 Concerning the preparation of efficient electrocatalysts supported on a Vulcan XC72
46 carbon powder, the Bönemann colloidal method and above all plasma sputtering allowed
47
48
49
50
51
52
53
54
55
56
57
58
59
60
61
62
63
64
65

1
2 preparing bimetallic platinum-based electrocatalysts with a low Pt loading. In the case of
3 plasma deposition of Pt nanoclusters, Pt loadings as low as $10 \mu\text{g cm}^{-2}$ were achieved, leading
4 to a very high mass power density of ca. $20 \text{ kW g}_{\text{Pt}}^{-1}$.

5 Finally characterization of the MEA electrical properties by Electrochemical Impedance
6 Spectroscopy (EIS) based on a theoretical model of mass and charge transport inside the
7 active and gas diffusion layers, together with the optimization of the operating parameters
8 (cell temperature, humidity, flow rate and pressure) allowed obtaining electrical performance
9 greater than 1.2 W cm^{-2} using an homemade MEAs with a rather low Pt loading.
10

11 In conclusion, it is important to develop new MEA components, based on a better
12 localization of the catalyst layer in order to decrease the amount of noble metals, on new
13 proton conducting membranes with higher conductivity and stability at higher temperatures
14 and on the optimization of heat and mass transfer together the water management within the
15 MEA.
16

17 18 19 20 21 22 23 24 25 **ACKNOWLEDGEMENTS**

26
27 The authors greatly acknowledge the French National Centre for Scientific Research
28 (CNRS) for its continuous support to the GDR PACTE through the Institute of Chemistry and
29 the Institute for Engineering and System Sciences of CNRS.
30

31 They would also acknowledge the Energy-Program of CNRS under the contract n°
32 PR08-1.5-3 (AMELI-0Pt) and the MID Innovation Agency of Dreux Town for their financial
33 supports.
34

35
36
37
38 DJJ gratefully acknowledges financial support from the European Commission under
39 FP6 Autobrane, contract n°020074 and FP6 IPHE-GENIE, contract n°039016.
40
41
42
43
44
45
46
47
48
49
50
51
52
53
54
55
56
57
58
59
60
61
62
63
64
65

References

1. W. R. Grove *Phil. Mag.* **1839**, *14*, 127.
2. W. R. Grove *Phil. Mag.* **1839**, *15*, 287.
3. J. O'M. Bockris, A. K. N. Reddy, *Modern Electrochemistry*, Plenum Press, New York, **1972**, Vol. 2, p. 1141.
4. G. P. Sakellaropoulos in *Advances in Catalysis*, D. D. Eley, H. Pines, P. B. Weisz, Eds., Academic Press, New York, **1981**, p. 218.
5. A. J. Appleby in *Comprehensive Treatise of Electrochemistry*, B. E. Conway, J. O'M. Bockris, E. Yeager, S. U. M. Khan, R. E. White, Eds., Plenum Press, New York, **1983**, Vol. 7, pp. 173-239.
6. A.J Appleby and F.R. Foulkes, *Fuel Cell Handbook*, Van Nostrand Reinhold, New York, **1989**, pp. 203-500.
7. K. Kordesch and G. Simader, *Fuel Cells and their Applications*, VCH, Weinheim, **1996**.
8. P. Stevens, F. Novel-Catin, A. Hammou, C. Lamy and M. Cassir, *Piles à combustible*, Techniques de l'Ingénieur, traité Génie Electrique, D3 340 (2000), pp. 1-28.
9. W. Vielstich, A. Lamm and H. Geisteiger, *Fuel Cells: Fundamental, Technology and Applications*, Wiley, Chichester, **2003**.
10. B. V. Tilak, R. S. Yeo, S. Srinivasan in *Comprehensive Treatise of Electrochemistry*, J. O'M. Bockris, B. E. Conway, E. Yeager, R. E. White, Eds., Plenum Press, New York, **1981**, Vol. 3, pp. 39-122.
11. C. Lamy, J.-M. Léger *J. Phys. IV* **1994**, C1-253.
12. C. Lamy, J.-M. Léger, S. Srinivasan in *Modern Aspects of Electrochemistry*, J. O'M. Bockris, B. E. Conway, R. E. White, Eds., Kluwer Academic / Plenum Publishers, New York, **2001**, Vol. 34, pp. 53-118.
13. *Fuel Cell Technology Handbook*., edited by Gregor Hoogers, CRC Pres LLC, Boca Raton, Florida, **2003**.
14. M. R. Tarasevich, A. Sadkowski, E. Yeager in *Comprehensive Treatise of Electrochemistry*, B. E. Conway, J. O'M. Bockris, E. Yeager, S. U. M. Khan, R. E. White, Eds., Plenum Press, New York, **1983**, Vol. 7, pp. 301-398.
15. T. R. Ralph, M. P. Hogarth, *Platinum Metals Rev.* **2002**, 46, 3; 146.
16. K. Prater, *J. Power Sources*, 29 (1990) 239.
17. C. Lamy, C. Coutanceau, J.-M. Léger, "The Direct Ethanol Fuel Cell: a challenge to convert Bioethanol cleanly into electric energy", in "Catalysis for Sustainable Energy

Production”, edited by P. Barbaro and C. Bianchini, Wiley-VCH, Weinheim, 2009, Chap.1, pp. 3-46.

18. C. Lim, C.Y. Wang, *Electrochim. Acta* 49 (2004) 4149.
19. A. S. Aricò, A. Di Blasi, G. Brunaccini, F. Sergi, G. Dispenza, L. Andaloro, M. Ferraro, V. Antonucci, P. Asher, S. Buche, D. Fongalland, G. A. Hards, J. D. B. Sharman, A. Bayer, G. Heinz, N. Zandonà, R. Zuber, M. Gebert, M. Corasaniti, A. Ghielmi, D. J. Jones, *Fuel Cells* 10 (2010) 1013.
20. H. R. Gao, Y. M. Zhang, B. Bauer, D. J. Jones, J. Rozière, IPHE-GENIE, An international partnership for the generation of novel ionomer membranes, Final Report, 2009.
21. Y. M. Zhang, L. Li, J. K. Tang, B. Bauer, W. Zhang, H. R. Gao, M. Taillades-Jacquin, D. J. Jones, J. Rozière, N. Lebedeva, R. K. A. M. Mallant, *ECS Transactions* 25 (2009) 1469.
22. H. R. Gao, PhD Thesis, University of Montpellier 2 (France), 2010.
23. J. Rozière, D. J. Jones, *Annu. Rev. Mater. Res.* 33 (2003) 503.
24. L. Gubler, S. A. Gürsel, G. G. Scherer, *Fuel Cells* 3 (2005) 317.
25. Y. S. Kim, M. A. Hickner, L. Dong, B. S. Pivovar, J. E. McGrath, *J. Membr. Sci.* 243 (2004) 317.
26. B. Bauer, D. J. Jones, J. Rozière, L. Tchicaya, G. Alberti, M. Casciola, L. Massinelli, A. Peraio, S. Besse, E. Rammuni, *J. New Mater. Electrochem. Syst.* 3 (2000) 93.
27. J. Peron, E. Ruiz, D. Jones, J. Rozière, *J. Membr. Sci.* 314 (2008) 247.
28. C. Marestin, G. Gebel, O. Diat, R. Mercier, *Adv. Polym. Sci.* 216 (2008) 185.
29. S. Subianto, D. J. Jones, J. Rozière, *J. Membr. Sci.*, manuscript in preparation.
30. F. Ng, D. J. Jones, J. Rozière, M. J. Jeske, M. J. Schuster, B. Bauer, *J. Membr. Sci.* 362 (2010) 184.
31. D. J. Jones, J. Rozière, in: *Encyclopedia of Electrochemical Power Sources*, C. D. J. Garche, P. Moseley, B. Scrosati, Z. Ogumi, D. Rand, (Ed.), Elsevier, Amsterdam, Vol. 2, 2009, pp. 667-679.
32. Q. F. Li, J. O. Jensen, R. Savinell, N. J. Bjerrum, *Prog. Polymer Sci.* 34 (2009) 449.
33. H. Steininger, M. Schuster, K. D. Kreuer, J. Maier, *Solid State Ionics* 177 (2006) 2457.
34. J. Parvole, P. Jannasch, *J. Mater. Chem.* 18 (2008) 5547.
35. Y. Nedellec, M. Dupont, I. Kundler, J. Belack, D. J. Jones, J. Rozière, *Progress MEA* 2010, La Grande Motte, 2010, Proceedings p. 142.
36. B. Schubert, H. Tributsch, N. Alonso-Vante, A. Perrin, *J. Catal.* 112(1988) 384..

- 1
2
3
4
5
6
7
8
9
10
11
12
13
14
15
16
17
18
19
20
21
22
23
24
25
26
27
28
29
30
31
32
33
34
35
36
37
38
39
40
41
42
43
44
45
46
47
48
49
50
51
52
53
54
55
56
57
58
59
60
61
62
63
64
65
37. B. Schubert, N. Alonso-Vante, E. Gocke, H. Tributsch, *Ber. Bunseng. Phys. Chem.* 92 (1988) 1279.
 38. N. Alonso-Vante, H. Tributsch, *Nature* 323 (1996) 431.
 39. T.J. Schmidt, U.A. Paulus, H.A. Gasteiger, N. Alonso-Vante, R.J. Behm, *J. Electrochem. Soc.* 147 (2000) 2620.
 40. R. Jiang, D. Chu, *J. Electrochem. Soc.* 147 (2000) 4605.
 41. P. Convert, C. Coutanceau, P. Crouigneau, F. Gloaguen, C. Lamy, *J. Appl. Electrochem.* 31 (2001).
 42. S. Baranton, C. Coutanceau, J.-M. Léger, C. Roux, P. Capron, *Electrochimica Acta* 51 (2005) 517.
 43. S. Baranton, C. Coutanceau, C. Roux, F. Hahn, J.-M. Léger, *J. Electroanal. Chem.* 577 (2005) 223.
 44. S. Baranton, C. Coutanceau, E. Garnier, J.-M. Léger, *J. Electroanal. Chem.* 590 (2006) 100.
 45. K. Kinoshita, *Electrochemical Oxygen Technology*, Wiley, New York, 1992, p. 46.
 46. P. Brault, S. Roualdès, A. Caillard, A.-L. Thomann, J. Mathias, J. Durand, C. Coutanceau, J.-M. Léger, C. Charles, R. Boswell, *Eur. Phys. J. Appl. Phys.* 34 (2006) 151.
 47. M.T. Paffet, J.G. Beery, S. Gottesfeld, *J. Electrochem. Soc.* 135 (1988) 1431.
 48. B.C. Beard, P.N. Ross, *J. Electrochem. Soc.* 137 (1990) 3368.
 49. T. Toda, H. Igarashi, M. Watanabe, *J. Electroanal. Chem.* 460 (1999) 258.
 50. N. Neergat, A. Shukla, K.S. Gandhi, *J. Appl. Electrochem.* 31 (2001) 373.
 51. T. Toda, H. Igarashi, H. Ushida, M. Watanabe, *J. Electrochem. Soc.* 146 (1999) 3750.
 52. R.C. Koffi, C. Coutanceau, E. Garnier, J.-M. Léger, C. Lamy, *Electrochim. Acta* 50 (2005) 4117.
 53. C. Grolleau, C. Coutanceau, F. Pierre, J.-M. Léger, *J. Power Sources* 195 (2010) 1569.
 54. C. Lamy, A. Lima, V. LeRhun, F. Delime, C. Coutanceau, J.-M. Léger, *J. Power Sources*, 105, (2002) 283.
 55. C. Coutanceau, A. Rakotondrainibe, A. Lima, E. Garnier, S. Pronier, J. M. Léger, C. Lamy, *J. Appl. Electrochem.* 34 (2004) 61.
 56. F. Vigier, C. Coutanceau, A. Perrard, E. M. Belgsir, C. Lamy, *J. Appl. Electrochem.* 34, (2004) 439 - 446.
 57. 24- C. Lamy, S. Rousseau, E. M. Belgsir, C. Coutanceau, J. -M. Léger, *Electrochim. Acta* 49 (2004) 3901.

- 1
2
3
4
5
6
7
8
9
10
11
12
13
14
15
16
17
18
19
20
21
22
23
24
25
26
27
28
29
30
31
32
33
34
35
36
37
38
39
40
41
42
43
44
45
46
47
48
49
50
51
52
53
54
55
56
57
58
59
60
61
62
63
64
65
58. H. Bönne-man, W. Brijoux, R. Brinkmann, E. Dinjus, T. Jousen, B. Korall, *Angew. Chem. Int. Engl.* 30 (1991) 1312.
 59. H. Bönne-man, W. Brijoux, R. Brinkmann, R. Fretzen, T. Jousen, R. Köppler, B. Korall, P. Neiteler, J. Richter, *J. Mol. Catal.* 86 (1994) 129.
 60. C. Grolleau, C. Coutanceau, F. Pierre, J.M. Leger. *Electrochim. Acta.* 53 (2008) 7157.
 61. L. Dubau, C. Coutanceau, E. Garnier, J. -M. Léger, C. Lamy, *J. Appl. Electrochem.* 33 (2003) 419.
 62. S. Rousseau, C. Coutanceau, C. Lamy, J.-M. Léger, *J. Power Sources* 158 (2006) 18.
 63. P. Waszczuk, J. Solla-Gullon, H.-S. Kim, Y.-Y. Tong, V. Montiel, A. Aldaz, A. Wieckowski, *J. Catal.* 203 (2001) 1.
 64. S. Koh, P. Strasser, *J. Am. Soc.* 129 (2007) 12624.
 65. E. Antolini, J.R.C. Salgado, R.M. da Silva, E.R. Gonzalez, *Materials Chemistry and Physics* 101-2 (2007) 395.
 66. P. Yu, M. Pemberton, P. Plasse. *J. Power Sources* 144 (2005) 11.
 67. S. Litster and G. McLean, *J. Power Sources* 130 (2004) 61.
 68. T. H. Yang, Y. G. Yoon, C. S. Kim, S. H., K. H. Yoon, *J. Power Sources* 106 (2002) 328.
 69. A. T. Haug, R. E. White, J. W. Weidner, W. Huang, S. Shi, T. Stoner, N. Rana, *J. Electrochem. Soc.* 149 (2002) A280.
 70. A. T. Haug, R. E. White, J. W. Weidner, W. Huang, *J. Electrochem. Soc.* 149 (2002) A862.
 71. A. T. Haug, R. E. White, J. W. Weidner, W. Huang, S. Shi, N. Rana, S. Grunow, T. Stoner *J. Electrochem. Soc.* 149 (2002) A868.
 72. S. Y. Cha and W. M. Lee, *J. Electrochem. Soc.* 146 (1999) 4055.
 73. S. Hira, J. Kim, S. Srinivasan, *Electrochim. Acta* 42 (1997) 1587.
 74. S. Mukerjee, S. Srinivasan, A. J. Appleby *Electrochim. Acta* 38 (1993) 1661.
 75. P. Brault, A. Caillard, A. L. Thomann, J. Mathias, C. Charles, R. W. Boswell, S. Escribano, J. Durand, T. Sauvage, *J. Phys. D* 37 (2004) 3419.
 76. A. Caillard, P. Brault, J. Mathias, C. Charles, R. Boswell, T. Sauvage, *Surf. Coatings Technol.* 200 (2005) 391.
 77. H. Rabat, P. Brault, *Fuel Cells* 8 (2008) 81.
 78. H. Rabat, C. Andrezza, P. Brault, A. Caillard, F. Béguin, C. Charles, R. Boswell, *Carbon* 47 (2009) 209.
 79. A. Caillard, C. Charles, R. Boswell, P. Brault, C. Coutanceau, *Appl. Phys. Lett.* 90 (2007) 223119.

- 1
2
3
4
5
6
7
8
9
10
11
12
13
14
15
16
17
18
19
20
21
22
23
24
25
26
27
28
29
30
31
32
33
34
35
36
37
38
39
40
41
42
43
44
45
46
47
48
49
50
51
52
53
54
55
56
57
58
59
60
61
62
63
64
65
80. A. Caillard, C. Charles, R. Boswell, P. Brault, *Nanotechnology* 18 (2007) 305603.
 81. M. Cavarroc, A. Ennadjaoui, M. Mougnot, P. Brault, R. Escalier, Y. Tessier, J. Durand, S. Roualdès, T. Sauvage, C. Coutanceau, *Electrochem. Comm.* 11 (2009) 859.
 82. S. Martin, P.L. Garcia-Ybarra, J.L. Castillo, *Int. J. Hydrogen Energy* 35 (2010) 10446.
 83. E. Antolini, L. Giorgi, A. Pozio, E. Passalacqua, *J. Power Sources* 77 (1999) 136.
 84. G. Sasikumar, J.W. Ihm, H. Ryu, *J. Power Sources* 132 (2004) 11.
 85. A. Caillard, C. Coutanceau, P. Brault, J. Mathias, J.-M. Léger, *J. Power Sources* 162 (2006) 66.
 86. J. Perez, E. R. Gonzales, E. A. Ticianelli, *Electrochim. Acta* 44 (1998) 1329.
 87. M. Eikerling, A.A. Kornyshev, *J. Electroanal. Chem.* 475 (1999) 107.
 88. O. Antoine, Y. Bultel, R. Durand, *J. Electroanal. Chem.* 499 (2001) 85.
 89. Q. Guo, R.E. White, *J. Electrochem. Soc.* 151(4) (2004) E133.
 90. T.E. Springer, T.A. Zawodzinski, S. Gottesfeld, *J. Electrochem. Soc.* 138 (1991) 2334.
 91. Y. Bultel, K. Wiezell, F. Jaouen, P. Ozil, G. Lindbergh, *Electrochim. Acta* 51 (2005) 474.
 92. M. Keddou, C. Rakotomavo, H. Takenouti, *J. Appl. Electrochem* 14 (1984) 437.
 93. Y. Bultel, L. Genies, O. Antoine, P. Ozil and R. Durand, *J. Electroanal. Chem.* 527 (2002) 143.
 94. O. Antoine, Y. Bultel, P. Ozil, R. Durand, *Electrochim. Acta* 45 (2000) 4493.
 95. J.-J. A. Kadjo, P. Brault, A. Caillard, C. Coutanceau, J.-P. Garnier, S. Martemianov, *J. Power Sources* 72 (2007) 613
 96. A. Therdthianwong, P. Manomayidthikarn, S. Therdthianwong, *Energy* 32 (2007) 2401.
 97. B. Nakrumpai, K. Pruksathorn, P. Piumsomboon, *Korean J. Chem. Eng.* 2 (2006) 570..
 98. J. Zhang, G. Yin, Z. Wang, Q. Lai, K. Cai, *J. Power Sources* 165 (2007) 73.
 99. C. Le Ninivin, A. Balland-Longeau, D. Demattei, C. Coutanceau, C. Lamy, J.- M. Léger, *J. Appl. Electrochem.* 34 (2004) 1159.
 100. J. Xie, F. Xu, D. L. Wood, K. L. More, T. A. Zawodzinski, W. H. Smith, *Electrochim. Acta* 55 (2010) 7404.
 101. W.-K. Lee, C.-H. Ho, J.W.V. Zee, M. Murthy, *J. Power Sources* 84 (1999) 45.
 102. D. Bograchev, M. Gueguen, J. C. Grandidier, S. Martemianov, *J. Power Sources* 180 (2008) 393.
 103. D. Bograchev, M. Gueguen, J. C. Grandidier, S. Martemianov, *Int. J. Hydrogen Energy* 33 (2008) 5703.

- 1
2
3
4
5
6
7
8
9
10
11
12
13
14
15
16
17
18
19
20
21
22
23
24
25
26
27
28
29
30
31
32
33
34
35
36
37
38
39
40
41
42
43
44
45
46
47
48
49
50
51
52
53
54
55
56
57
58
59
60
61
62
63
64
65
104. J.-J. A. Kadjo, J.-P. Garnier, S. Martemianov, J.-P. Maye, C. Coutanceau, S. Grigoriev, Proceedings of the French Heat Transfer Congress, Transfers in Heterogeneous Mediums, Peninsula of Giens, 2004, pp. 928–932.
105. J.-J. A. Kadjo, J.-P. Garnier, J.-P. Maye, F. Relot, S. Martemianov, Russian J. Electrochem. 42 (2006) 467.

Figure captions

Figure 1: Hydrogen/oxygen fuel cell system.

Figure 2: Components of a Proton Exchange Membrane Elementary Cell.

Figure 3: Schematic representation of the Membrane-Electrode Assembly of a PEMFC.

Figure 4: Detailed scheme of a PEMFC system with its auxiliary and control equipments.

Figure 5a: Theoretical E(j) electric characteristics of a fuel cell : influence of the membrane specific resistance ($R_e = e/\sigma$) on the E(j) curves: (◆) $j_o = 10^{-8} \text{ A cm}^{-2}$; $R_e = 0.15 \Omega \text{ cm}^2$; $j_l = 1.3 \text{ A cm}^{-2}$; (■) $j_o = 10^{-8} \text{ A cm}^{-2}$; $R_e = 0.30 \Omega \text{ cm}^2$; $j_l = 1.2 \text{ A cm}^{-2}$.

Figure 5b: Theoretical E(j) electric characteristics of a fuel cell : Influence of the catalytic properties of electrodes (exchange current density j_o) on the E(j)curves: (△) $j_o = 10^{-6} \text{ A cm}^{-2}$; $R_e = 0.15 \Omega \text{ cm}^2$; $j_l = 1.4 \text{ A cm}^{-2}$; (◆) $j_o = 10^{-8} \text{ A cm}^{-2}$; $R_e = 0.15 \Omega \text{ cm}^2$; $j_l = 1.3 \text{ A cm}^{-2}$.

Figure 5c: Theoretical E(j) electric characteristics of a fuel cell : Influence of the mass transfer limitations (limiting current density j_l) on the E(j)curves: (△) $j_o = 10^{-6} \text{ A cm}^{-2}$; $R_e = 0.15 \Omega \text{ cm}^2$; $j_l = 1.4 \text{ A cm}^{-2}$; (+) $j_o = 10^{-6} \text{ A cm}^{-2}$; $R_e = 0.10 \Omega \text{ cm}^2$; $j_l = 2.2 \text{ A cm}^{-2}$.

Figure 6: E(j) characteristics of a PEMFC elementary cell with different membranes : (▲) Dow ($e = 125 \mu\text{m}$) ; (○) Nafion® 115 ($e = 125 \mu\text{m}$) ; (△) Nafion® 117 ($e = 175 \mu\text{m}$) ; *After* K. Prater (Ballard), J. Power Sources, 29 (1990) 239 [16].

Figure 7: Fuel cell characteristics of a DEFC recorded at 110°C. Influence of the nature of the bimetallic anodic catalyst (30% loading). Anode catalyst : 1.5 mg.cm^{-2} ; Cathode catalyst : 2 mg.cm^{-2} (40% Pt/XC72 E-TEK); Membrane : Nafion® 117; Ethanol concentration : 1 M; *After* C. Lamy et al, Chap.1, C. Bianchini et al. [17].

Figure 8: Cell voltage vs. current density curves for an H₂/air FC with MEAs using three different types of carbon cathode GDL (80°C, 0.22 mg cm⁻² Pt loading): (●) microporous layer-coated and 30 wt% FEP-impregnated; (■) 30 wt% FEP-impregnated; (▲) 10 wt% FEP-impregnated; *After* C. Lim, C.Y. Wang, Electrochim. Acta 49 (2004) 4149–4156 [18].

Figure 9: Acid form of sulfonimide-bridged perfluorosulfonic ionomer.

Figure 10: Water uptake (%) at 25°C (△) and 80°C (▲), and area dimensional change (%) at 25°C (□) and 80°C (■) in reference PFSA membrane, non-cross-linked sulfonamide and cross-linked (XL) sulfonimide forms prepared by thermal treatment at 200, 240 and 270°C.

Figure 11: Conductivity of sPBI-OPh sulfonated in a) 96% H₂SO₄ b) 30% oleum at 25°C and 100% relative humidity, as a function of the IEC of the sulfonated polymer. In a), sulfonation occurs preferentially on the benzyl rings adjacent to ether linkages; in b) sulfonation also occurs on the Cardo group.

Figure 12: Cell voltage and power density as a function of current density (active surface area 45 cm²) of Celtec-V type MEAs based on PBI and poly(vinylphosphonic) acid, operated on hydrogen and air hydrated at 80/64°C respectively, under the temperature and pressure conditions shown (collaboration CNRS-ICGM – BASF Fuel Cell in FP6 Autobrane).

Figure 13: Deposition of colloidal particles on a carbon powder.

Figure 14: Characterization of a Pt catalyst prepared by the colloidal method.

Figure 15: Characterization of a Pt_{0.8}Ru_{0.2}/C bimetallic catalyst prepared by the Bönemann

colloidal method: (a) co-reduced catalyst ; 'b) co-deposited catalyst.

Figure 16: XRD patterns of different PtM(40wt%)/XC72 catalysts prepared by the Bönemann method.

Figure 17: Voltammetric curves of the ORR at Pt₃M(40wt%)/C binary catalysts (M = Co, Fe, Ni) in O₂-saturated H₂SO₄ at T = 20°C, v = 3 mV s⁻¹ and Ω = 2500 rpm.

Figure 18: PEMFC electrode deposition on a carbon diffusion layer. *After* H. Rabat, P. Brault, Fuel Cells **8**, 81-86 (2008) [77] ; H. Rabat, C. Andreatza, P. Brault, A. Caillard, F. Béguin, C. Charles, R. Boswell, Carbon **47**, 209-214 (2009) [78].

Figure 19: Depth distribution of platinum inside the C/Pt electrode (as measured by RBS).

Figure 20: Electrical performances of several PEMFC with plasma cathodes made with different Pt loadings; H₂ and O₂ at 4 bars; cell at 80°C.

Figure 21: Fuel cell tests of a C-Pt co-deposited on an E-Tek diffusion layer [81].

Figure 22: Simulated impedance diagrams for a catalyst layer (η=0.4V): (●) γ=50 cm² cm⁻² and L=5 μm; (■) γ=50 cm² cm⁻² and L=10 μm; (▲) γ=100 cm² cm⁻² and L=20 μm.

Figure 23: Simulated impedance diagrams for a GDE (j=1 A cm⁻² and L^{GDL}=500 μm): (■) ε^{GDL}=40%; (◆) ε^{GDL}=20%.

Figure 24: Performance of a MEA fabricated with Pt/C catalysts synthesized by the colloidal route. Membrane: Nafion 112; Symmetric electrodes: 0.35 mg_{Pt} cm⁻²; Pt loading 40 wt % /C (T_{cell} = T_{huma} = 70°C, T_{humc} = 25°C, H₂ flow = 600 mL min⁻¹, O₂ flow = 300 mL min⁻¹, P_{H₂} = P_{O₂} = 3 bar).

Figure 25: Comparison between commercial and homemade MEAs. MEA 1: homemade anode via platinum plasma sputtering + homemade cathode via the colloidal route (0.45 mg_{Pt} cm⁻² total loading); MEA 2: commercial MEA from FCS (1.2 mg_{Pt} cm⁻² total loading); MEA 3 : homemade electrodes via the colloidal route (0.7 mg_{Pt} cm⁻² total loading). T_{cell} = 85°C; T_{huma} = 80°C, T_{humc} = 35°C, H₂ flow = 600 mL min⁻¹, O₂ flow = 300 mL min⁻¹, P_{H₂} = P_{O₂} = 2.3 bar

Figure 26: Performance of MEAs fabricated with Pt40wt%/C electrodes synthesized by plasma sputtering (0.1 mg_{Pt} cm⁻²) or by the colloidal route (0.35 mg_{Pt} cm⁻²) and a Nafion 112 membrane. (T_{cell} = T_{huma} = 70°C, T_{humc} = 25°C, H₂ flow = 600 mL min⁻¹, O₂ flow = 300 mL min⁻¹, P_{H₂} = P_{O₂} = 3 bar).

Table 1: Consequences of the electrical characteristics E(j) on the PEMFC stack cost (estimated cost of the MEA based on the actual cost of its constituents): example of an electrical vehicle with a power train FC stack of 63 kW

Power density / W cm ⁻²	Electrode surface area / m ²	Membrane cost ⁽¹⁾ / €	Platinum metal loading ⁽²⁾ / g	Platinum metal cost ⁽³⁾ / €	Total cost of the stack MEA / €	MEA cost per kW / €
0.175	36	14 400	36	1 800	16 200	257
0.28	22.5	9 000	22.5	1 125	10 125	161
0.63	10	4 000	10	500	4 500	71.4
1.05	6	2 400	6	300	2 700	42.9

- (1) based on a Nafion[®] membrane cost of 400 € / m²
- (2) based on a platinum loading of 0.1 mg / cm²
- (3) based on a platinum cost of 50 € / g

Table 2: Mean particle sizes as determined by TEM and crystallographic structure as determined by XRD measurements of the different supported catalysts prepared by the Bönemann method.

Catalyst	d_{TEM} / nm	Crystallographic structure
Pt/XC72	2.2	Fcc
Pt+Ru(80:20)/XC72	2.1	Fcc Pt + hc Ru (in interaction)
Pt-Ru(80:20)/XC72	1.9	Fcc alloy
Pt/XC72 + Ru/XC72 (80:20)	Pt(2.1)+Ru(1.5)	Fcc Pt + hc Ru
Ru/XC72	1.5	Hexagonal compact (hc)

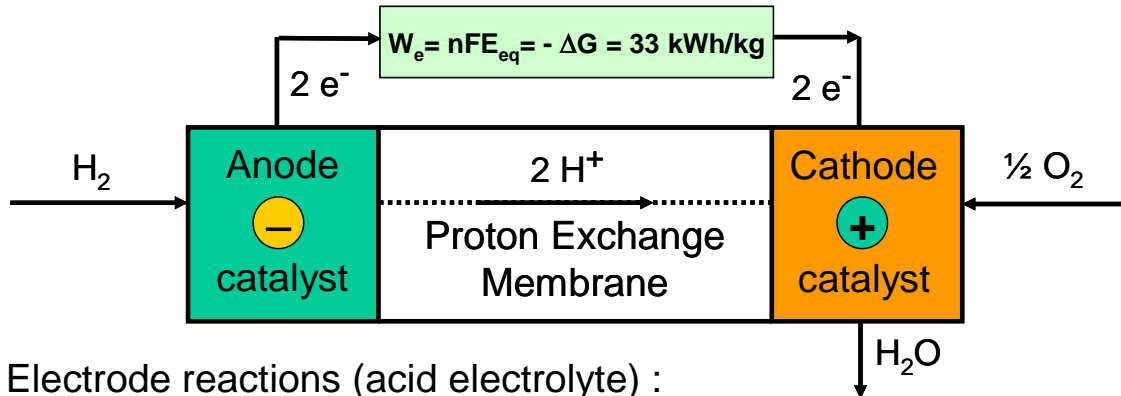
Table 3: Bulk atomic composition as determined by EDX, mean particle sizes as determined by TEM and catalytic activity towards the ORR of the different Pt₃M/XC72 catalysts prepared by the Bönemann method.

Catalyst	Nominal composition / at%	EDX composition / at%	d_{TEM} / nm	j_k at 0.95 V for the ORR / mA cm⁻²
Pt	100	100	2.5	0.82
PtNi	75/25	91/9	2.0	1.09
PtFe	75/25	78/22	2.5	1.11
PtCo	75/25	84/16	2.0	1.68

Table 4: Summary of the parameters used for simulation.

Kinetic parameters	$j_0=10^{-3} \text{ A m}^{-2}$, $\alpha_o=0.5$, $\alpha_r=0.5$
Mass and charge transport parameters	$D^{\text{eff}}=10^{-9} \text{ m}^2 \text{ s}^{-1}$ and $\kappa^{\text{eff}}=0.01 \text{ S m}^{-1}$
Double layer Capacitance	$C_{\text{dl}}=0.1 \text{ F m}^{-2}$

1
2
3
4
5
6
7
8
9
10
11
12
13
14
15
16
17
18
19
20
21
22
23
24
25
26
27
28
29
30
31
32
33
34
35
36
37
38
39
40
41
42
43
44
45
46
47
48
49
50
51
52
53
54
55
56
57
58
59
60
61
62
63
64
65



Electrode reactions (acid electrolyte) :

- Anode $H_2 \longrightarrow 2 H^+ + 2 e^-$
- Cathode $\frac{1}{2} O_2 + 2 H^+ + 2 e^- \longrightarrow H_2O$

$H_2 + \frac{1}{2} O_2 \rightarrow H_2O$ with $\Delta G^\circ = -237 \text{ kJ/mole}$ and $E_{eq} = 1.23 \text{ V}$

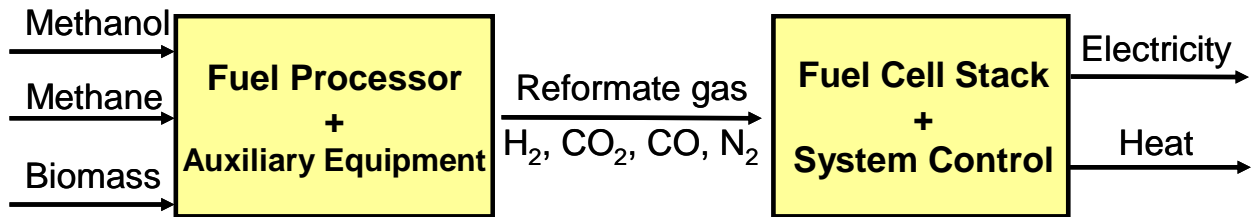


Figure 1: Hydrogen/oxygen fuel cell system

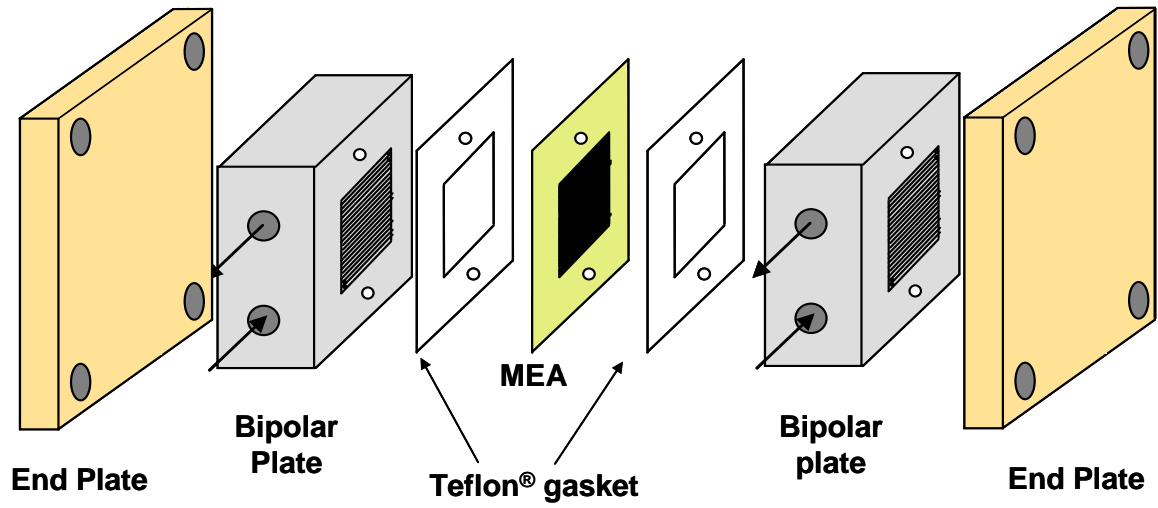


Figure 2: Components of a Proton Exchange Membrane Elementary Cell

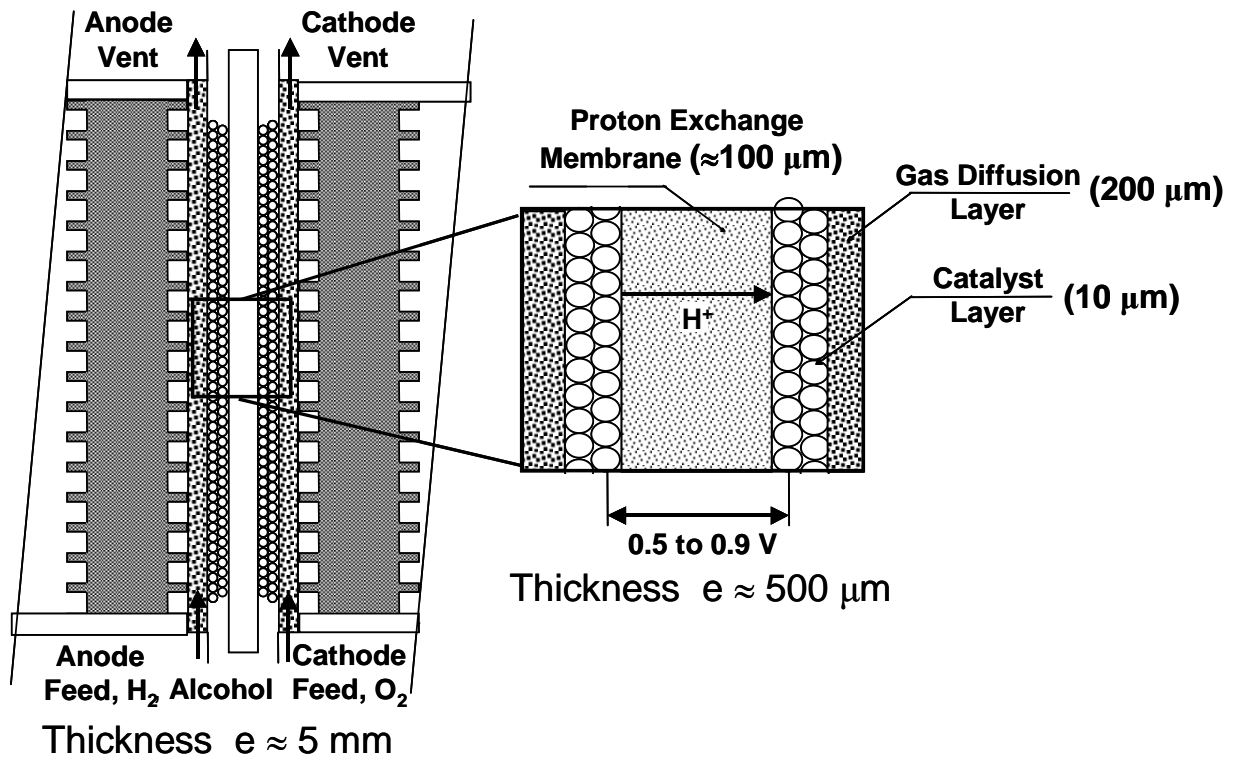


Figure 3: Schematic representation of the Membrane-Electrode Assembly of a PEMFC

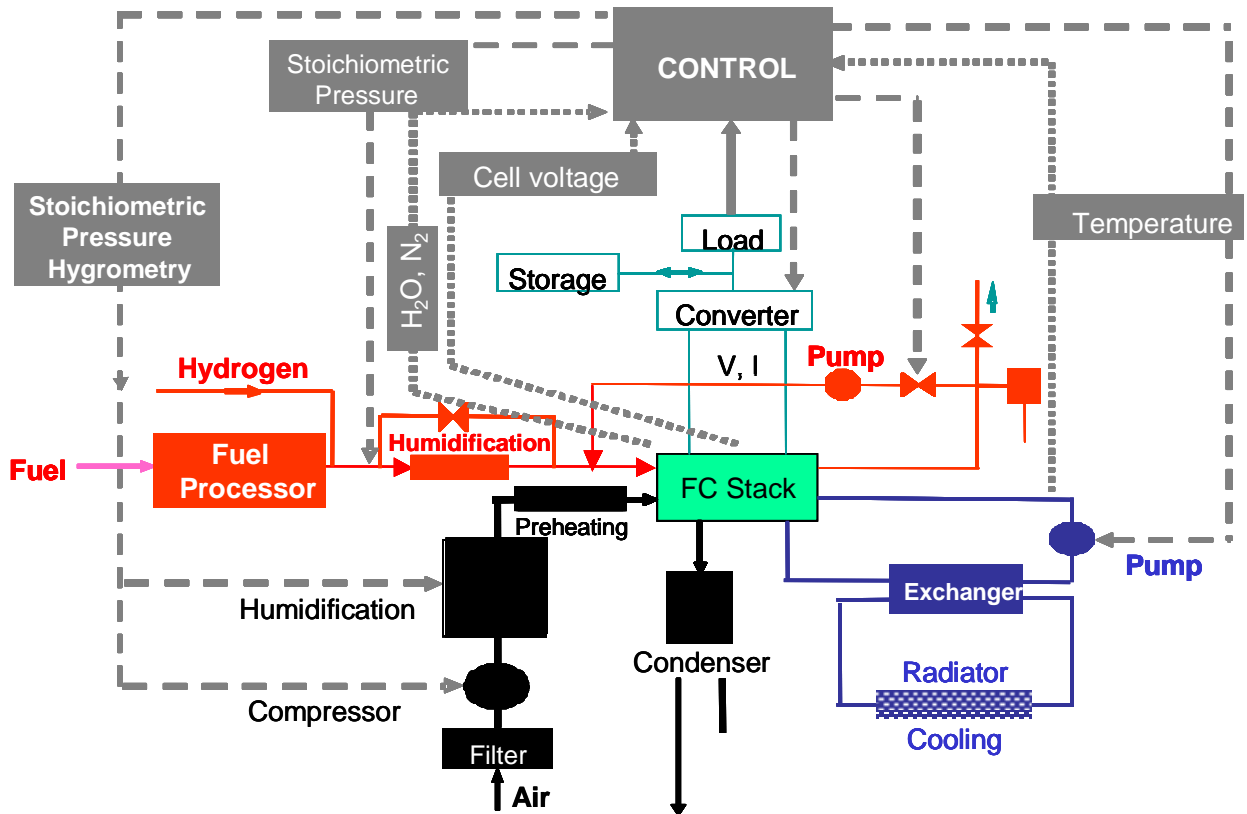


Figure 4: Detailed scheme of a PEMFC system with its auxiliary and control equipments.

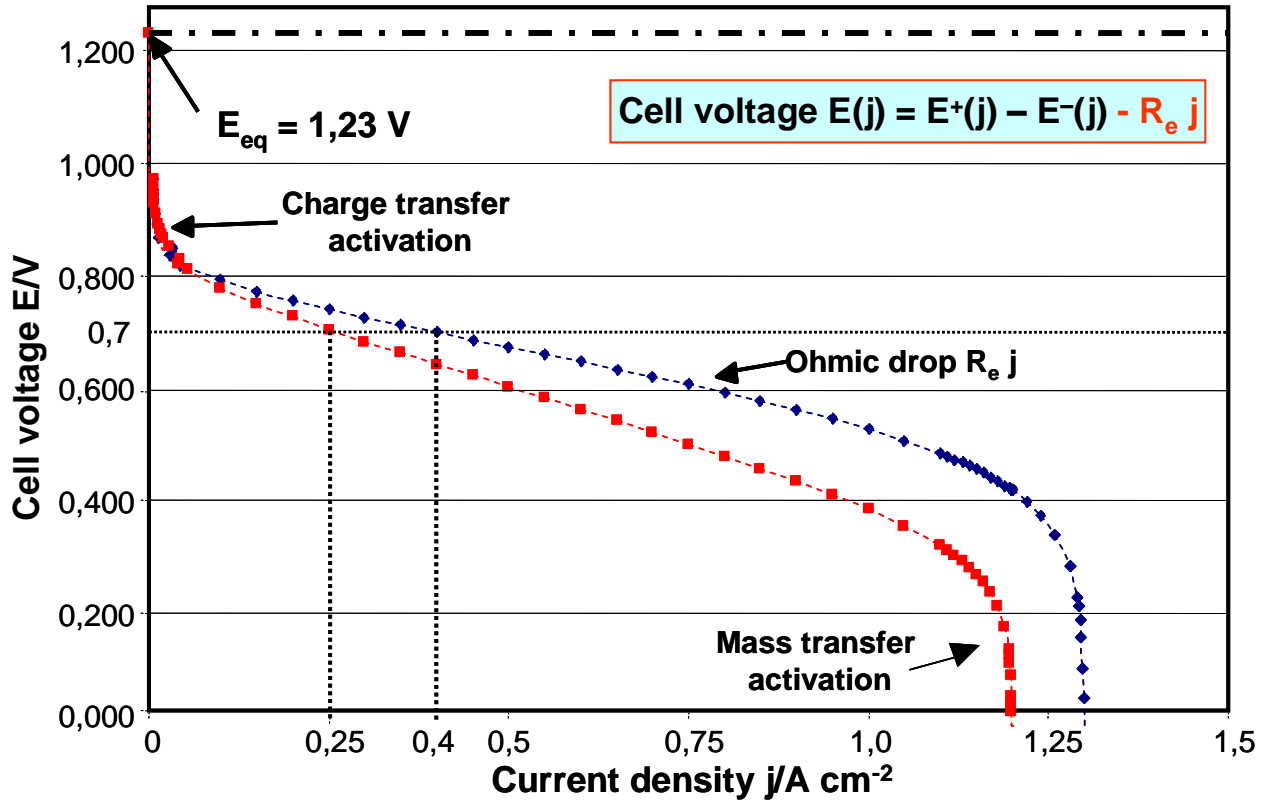


Figure 5a: Theoretical $E(j)$ electric characteristics of a fuel cell : influence of the membrane specific resistance ($R_e = e/\sigma$) on the $E(j)$ curves.

(◆) $j_o = 10^{-8} \text{ A cm}^{-2}$; $R_e = 0.15 \text{ } \Omega \text{ cm}^2$; $j_l = 1.3 \text{ A cm}^{-2}$

(■) $j_o = 10^{-8} \text{ A cm}^{-2}$; $R_e = 0.30 \text{ } \Omega \text{ cm}^2$; $j_l = 1.2 \text{ A cm}^{-2}$

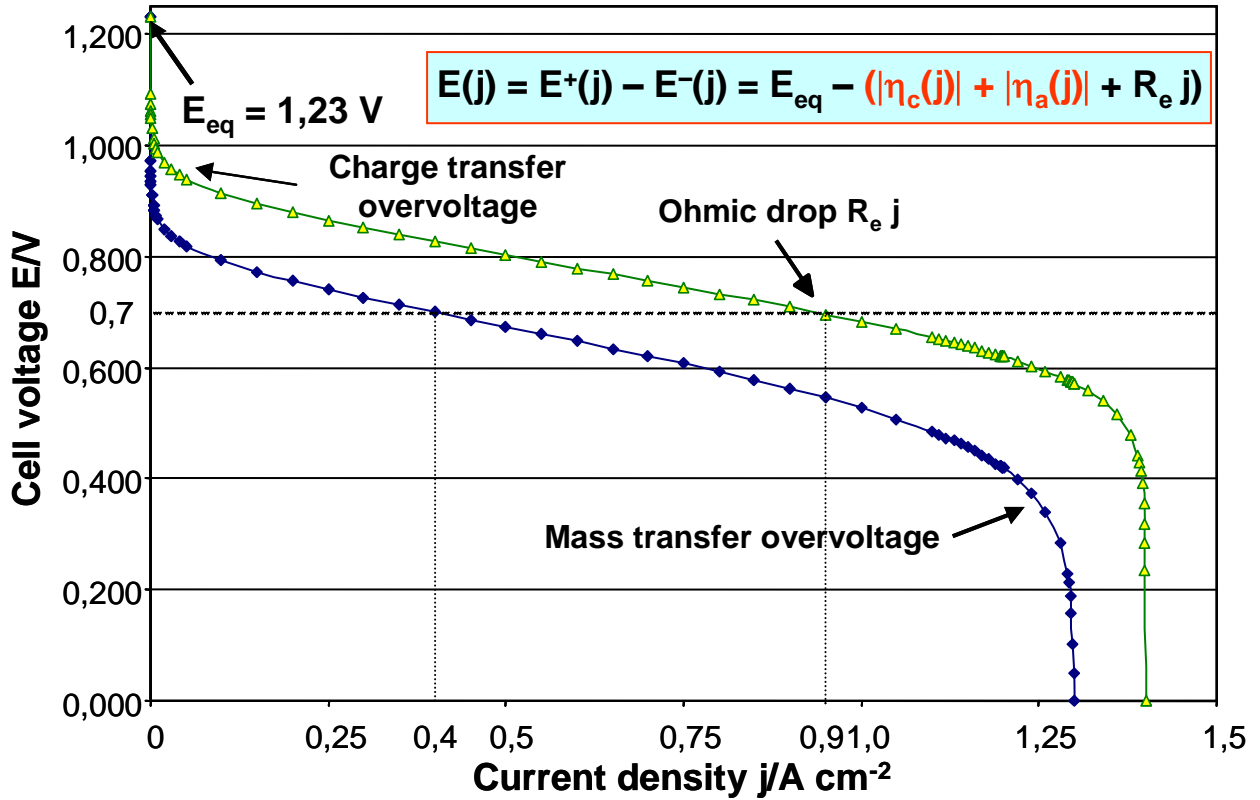


Figure 5b: Theoretical $E(j)$ electric characteristics of a fuel cell : Influence of the catalytic properties of electrodes (exchange current density j_0) on the $E(j)$ curves.

(\triangle) $j_0 = 10^{-6} \text{ A cm}^{-2}$; $R_e = 0.15 \Omega \text{ cm}^2$; $j_l = 1.4 \text{ A cm}^{-2}$

(\blacklozenge) $j_0 = 10^{-8} \text{ A cm}^{-2}$; $R_e = 0.15 \Omega \text{ cm}^2$; $j_l = 1.3 \text{ A cm}^{-2}$

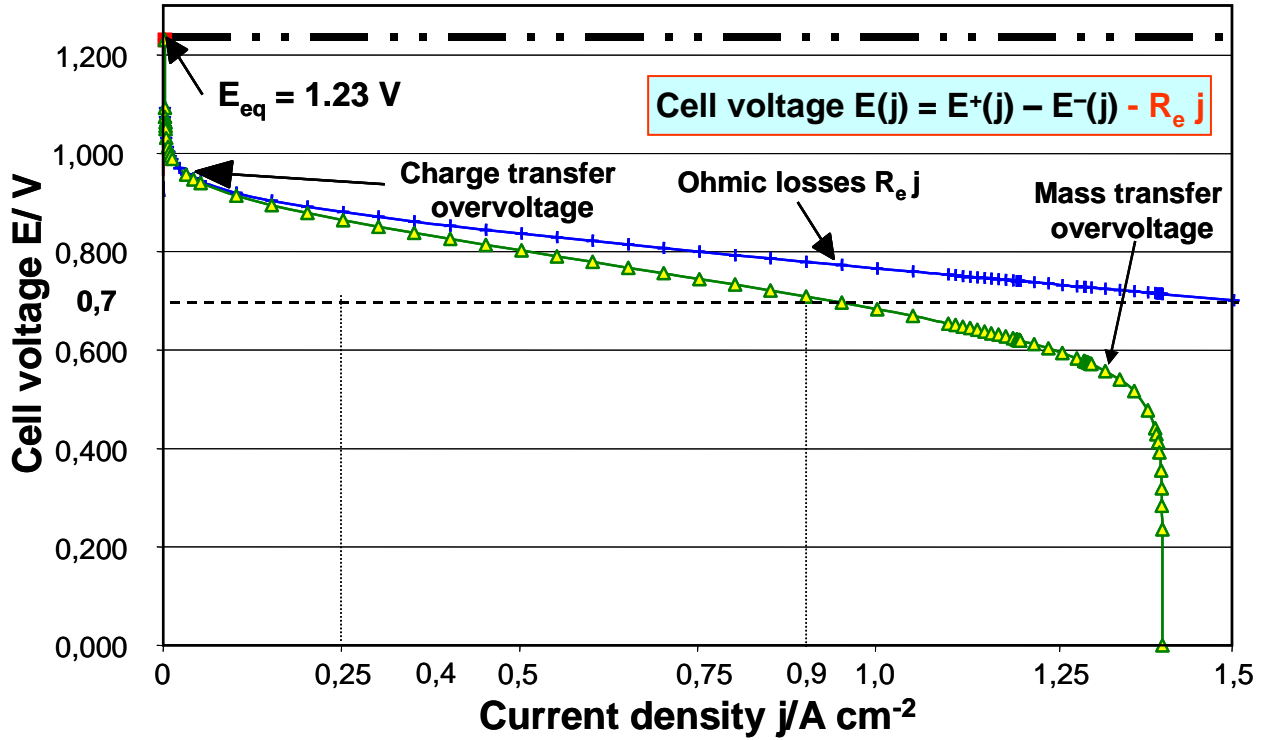


Figure 5c: Theoretical $E(j)$ electric characteristics of a fuel cell : Influence of the mass transfer limitations (limiting current density j_l) on the $E(j)$ curves.

(Δ) $j_o = 10^{-6} \text{ A cm}^{-2}$; $R_e = 0.15 \text{ } \Omega \text{ cm}^2$; $j_l = 1.4 \text{ A cm}^{-2}$

($+$) $j_o = 10^{-6} \text{ A cm}^{-2}$; $R_e = 0.10 \text{ } \Omega \text{ cm}^2$; $j_l = 2.2 \text{ A cm}^{-2}$

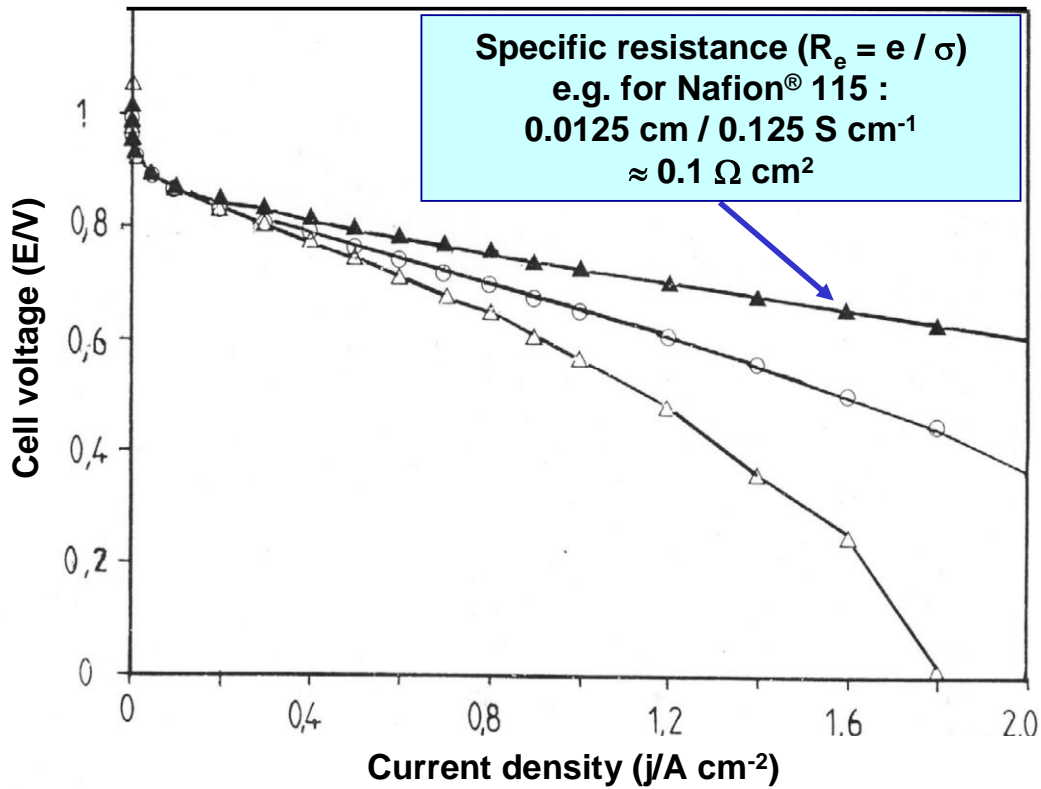


Figure 6: E(j) characteristics of a PEMFC elementary cell with different membranes :

(▲) Dow (e = 125 μm) ; (○) Nafion® 115 (e = 125 μm) ; (△) Nafion® 117 (e = 175 μm)

After K. Prater (Ballard), J. Power Sources, 29 (1990) 239

[16]

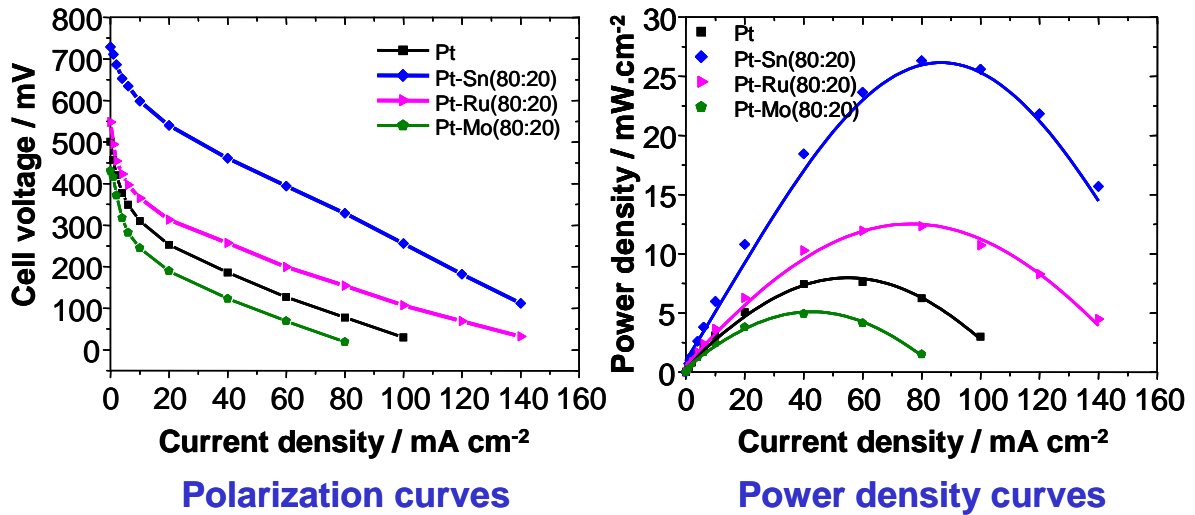


Figure 7: Fuel cell characteristics of a DEFC recorded at 110°C. Influence of the nature of the bimetallic anodic catalyst (30% loading). Anode catalyst : 1.5 mg.cm⁻² ; Cathode catalyst : 2 mg.cm⁻² (40% Pt/XC72 E-TEK) ; Membrane : Nafion[®] 117; Ethanol concentration : 1 M.

After C. Lamy et al, Chap.1, C. Bianchini et al.

[17]

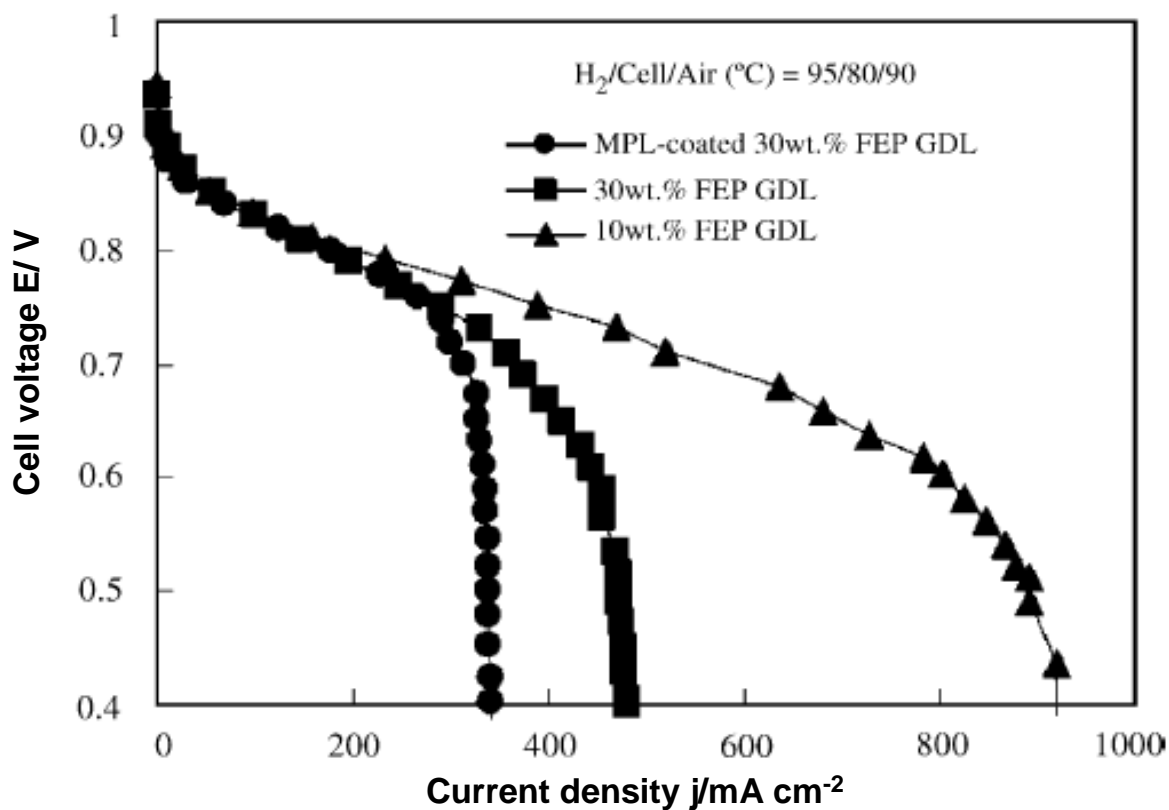


Figure 8: Cell voltage vs. current density curves for an H₂/air FC with MEAs using three different types of carbon cathode GDL (80°C, 0.22 mg cm⁻² Pt loading) :

- (●) microporous layer-coated and 30 wt.% FEP-impregnated; (■) 30 wt.% FEP-impregnated;
- (▲) 10 wt.% FEP-impregnated

After C. Lim, C.Y. Wang, *Electrochim. Acta* 49 (2004) 4149–4156 [18]

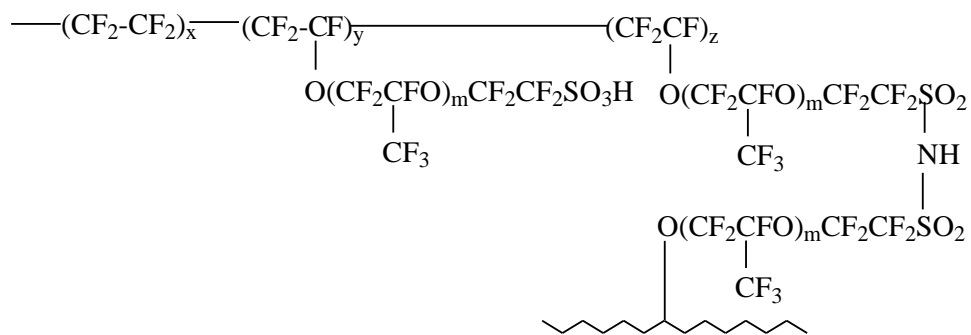


Figure 9: Acid form of sulfonimide-bridged perfluorosulfonic ionomer

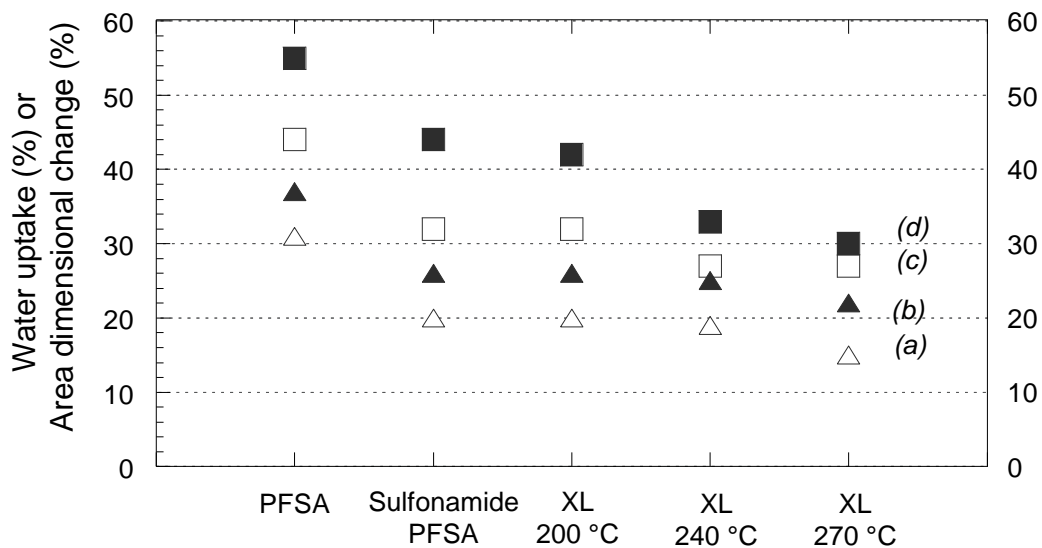


Figure 10: Water uptake (%) at 25°C (△) and 80°C (▲), and area dimensional change (%) at 25°C (□) and 80°C (■) in reference PFSA membrane, non-cross-linked sulfonamide and cross-linked (XL) sulfonimide forms prepared by thermal treatment at 200, 240 and 270°C.

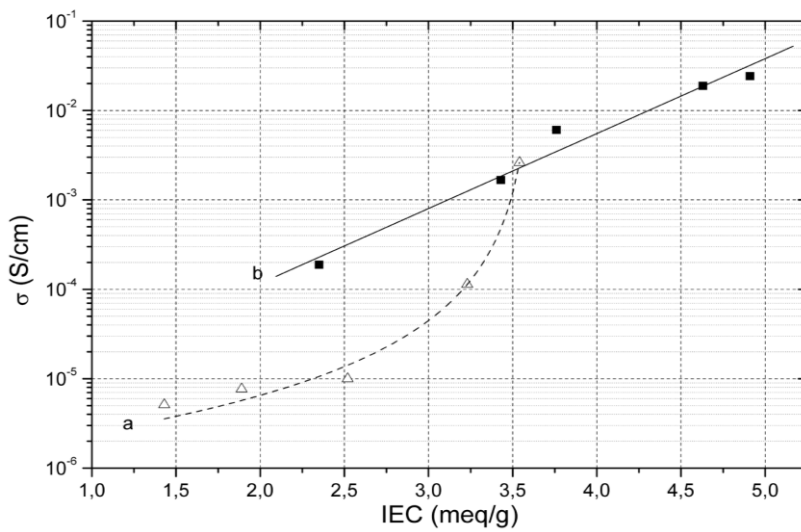
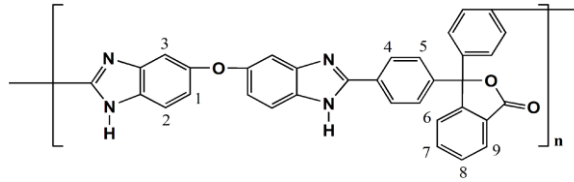


Figure 11: Conductivity of sPBI-OPh sulfonated in a) 96% H₂SO₄ b) 30% oleum at 25°C and 100% relative humidity, as a function of the IEC of the sulfonated polymer. In a), sulfonation occurs preferentially on the benzyl rings adjacent to ether linkages; in b) sulfonation also occurs on the Cardo group.

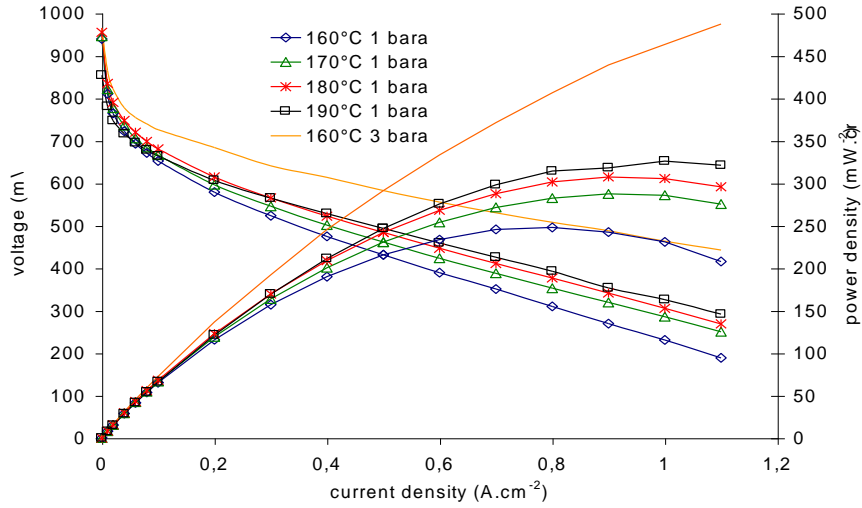


Figure 12: Cell voltage and power density as a function of current density (active surface area 45 cm²) of Celtec-V type MEAs based on PBI and poly(vinylphosphonic) acid, operated on hydrogen and air hydrated at 80/64°C respectively, under the temperature and pressure conditions shown (collaboration CNRS-ICGM – BASF Fuel Cell in FP6 Autobrane).

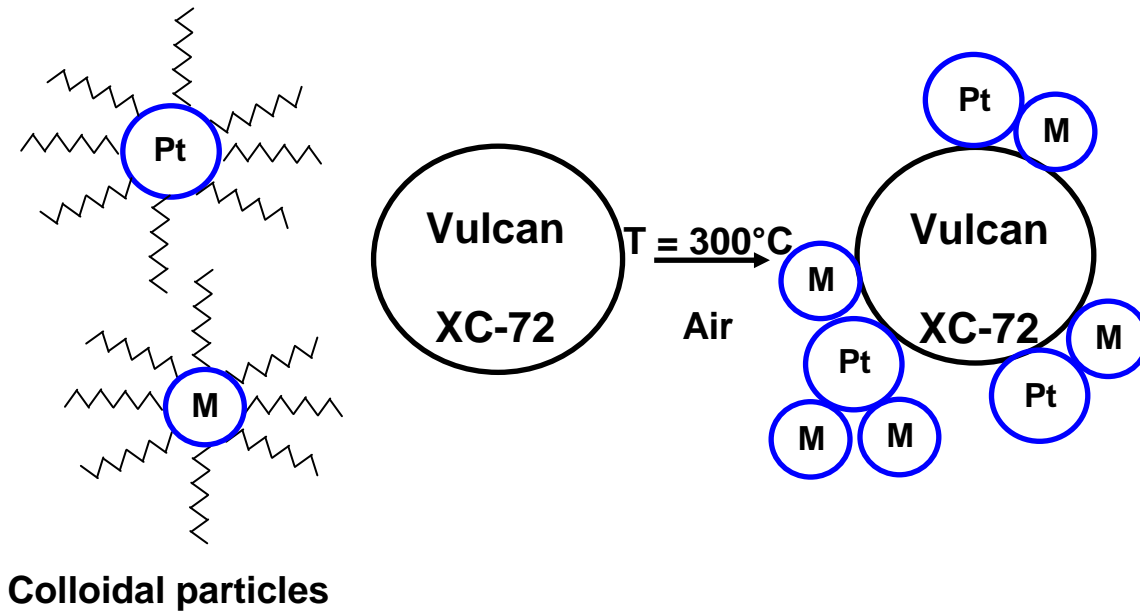
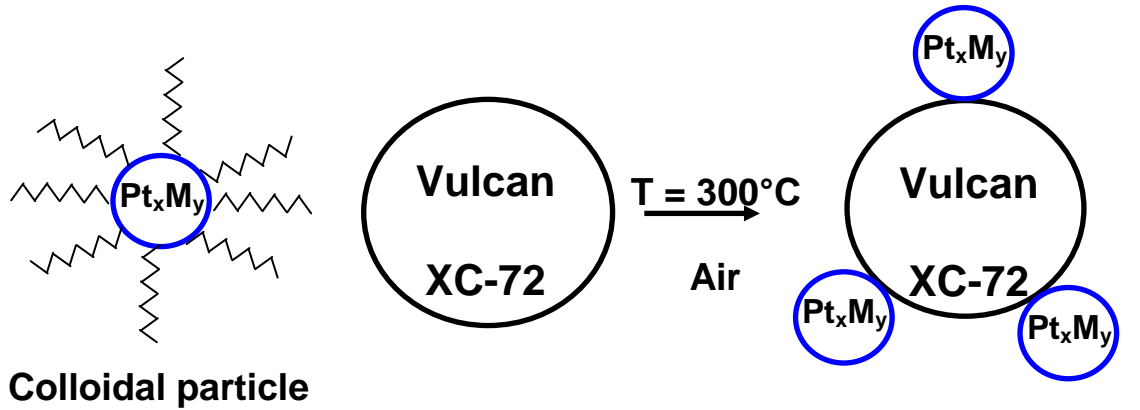
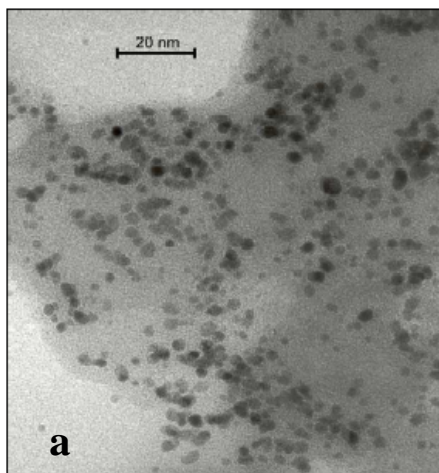
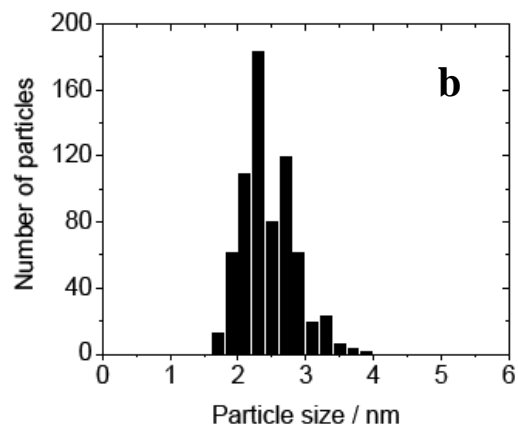


Figure 13: Deposition of colloidal particles on a carbon powder.



23
24
25
26
27
28
29
30

**TEM image of a Vulcan supported
Pt/XC72 catalyst
(with a metal loading of 30%)
prepared by the colloidal method**



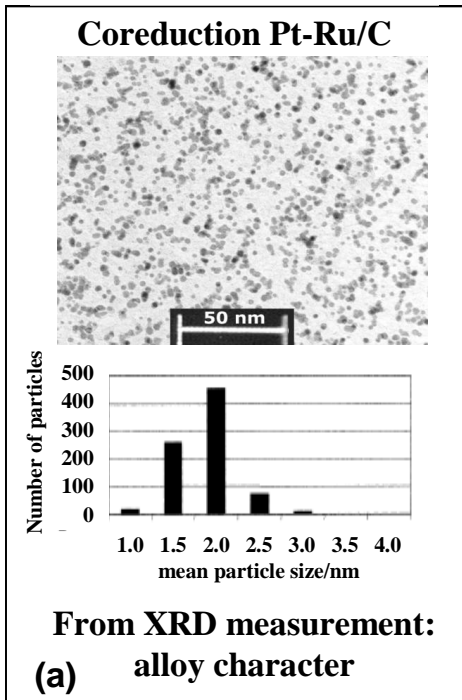
66
67
68
69
70
71
72
73
74
75
76
77
78
79
80
81
82
83
84
85
86
87
88
89
90
91
92
93
94
95
96
97
98
99
100

**Particle size distribution of the
corresponding Pt/XC72 catalyst
(based on the observation
of 678 particles)**

Mean diameter : 2.4 ± 0.4 nm

101
102
103
104
105
106
107
108
109
110
111
112
113
114
115
116
117
118
119
120
121
122
123
124
125
126
127
128
129
130
131
132
133
134
135
136
137
138
139
140
141
142
143
144
145
146
147
148
149
150
151
152
153
154
155
156
157
158
159
160
161
162
163
164
165

Figure 14: Characterization of a Pt catalyst prepared by the colloidal method



$$\bar{d}_{\text{TEM}} = \frac{\sum n_i d_i}{n}$$

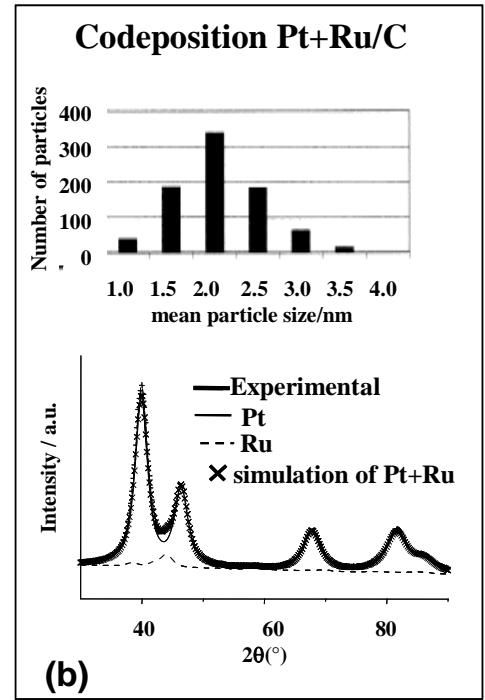


Figure 15: Characterization of a $\text{Pt}_{0.8}\text{Ru}_{0.2}/\text{C}$ bimetallic catalyst prepared by the Bönemann colloidal method: (a) co-reduced catalyst; (b) co-deposited catalyst.

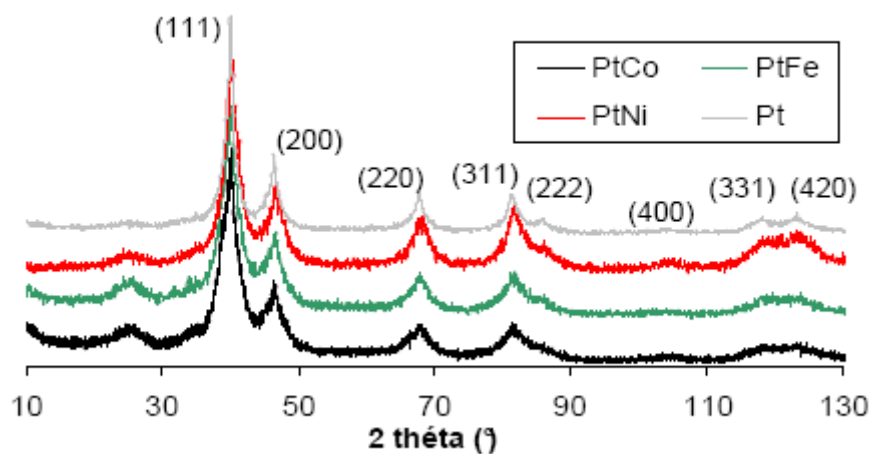


Figure 16: XRD patterns of different PtM(40wt%)/XC72 catalysts prepared by the Bönemann method.

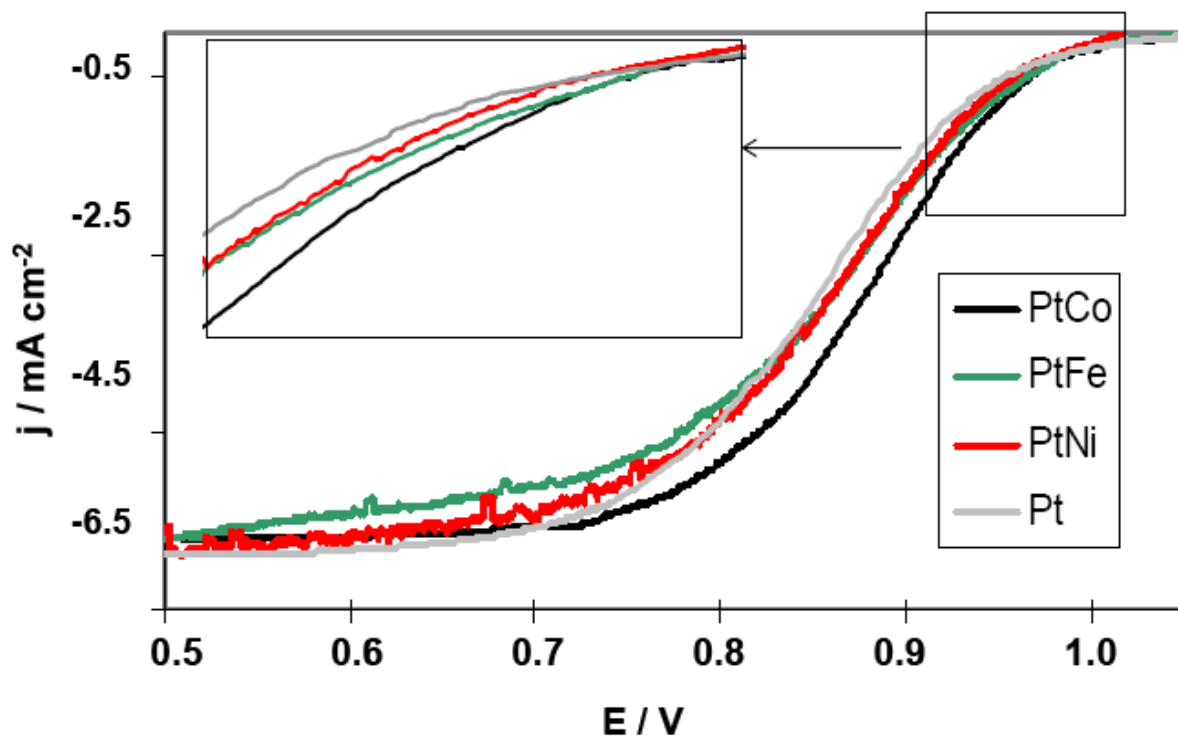
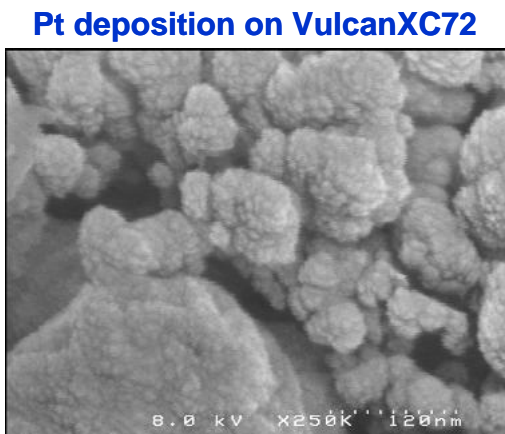


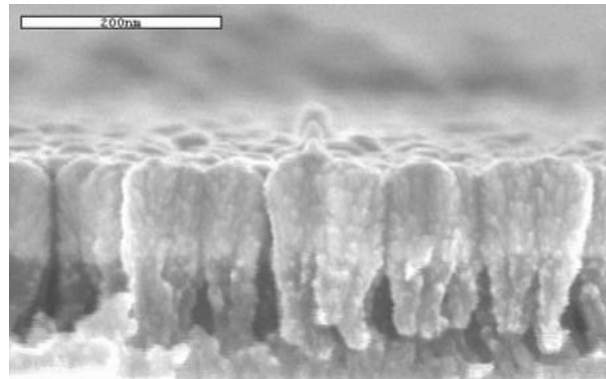
Figure 17: Voltammetric curves of the ORR at $\text{Pt}_3\text{M}(40\text{wt}\%)/\text{C}$ binary catalysts ($\text{M} = \text{Co}, \text{Fe}, \text{Ni}$) in O_2 -saturated H_2SO_4 at $T = 20^\circ\text{C}$, $v = 3 \text{ mV s}^{-1}$ and $\Omega = 2500 \text{ rpm}$.

SEM pictures: D.Cot (IEM, Montpellier, France)

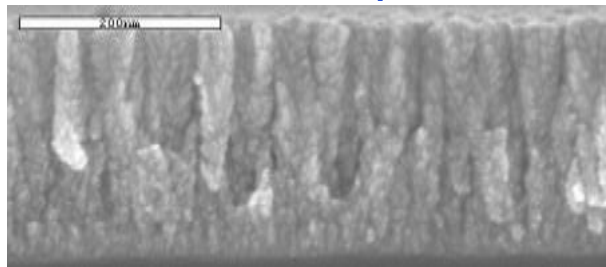


SEM experiments ($80 \mu\text{g Pt}/\text{cm}^2$)
Cluster growth
depth dependent size

Alternate Carbon and Pt deposition



Carbon-Pt co-deposition



SEM pictures A. Richard, CME, Univ. Orléans

Figure 18: PEMFC electrode deposition on a carbon diffusion layer

After H. Rabat, P. Brault, *Plasma sputtering deposition of PEMFC porous carbon platinum electrodes*, Fuel Cells **8**, 81-86 (2008) [77]

H. Rabat, C. Andrezza, P. Brault, A. Caillard, F. Béguin, C. Charles, R. Boswell, *Carbon /platinum nanotextured films produced by plasma sputtering*, Carbon **47**, 209-214 (2009) [78]

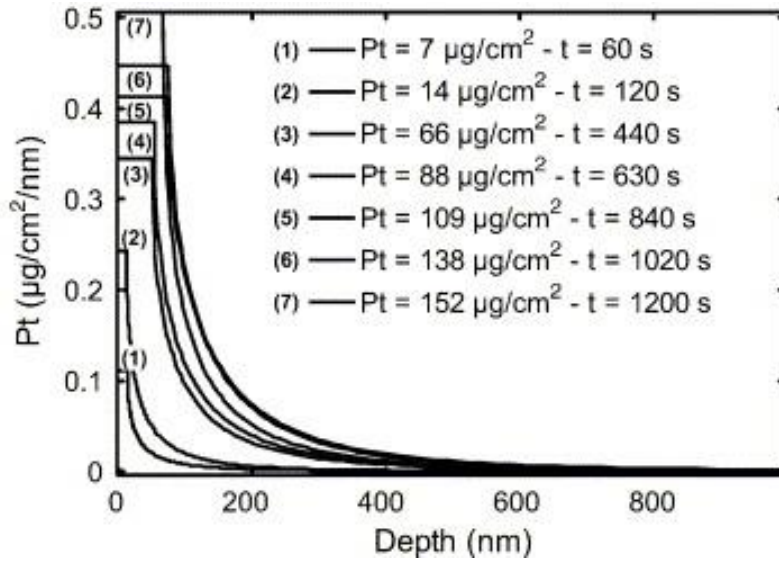


Figure 19: Depth distribution of platinum inside the C/Pt electrode (as measured by RBS)

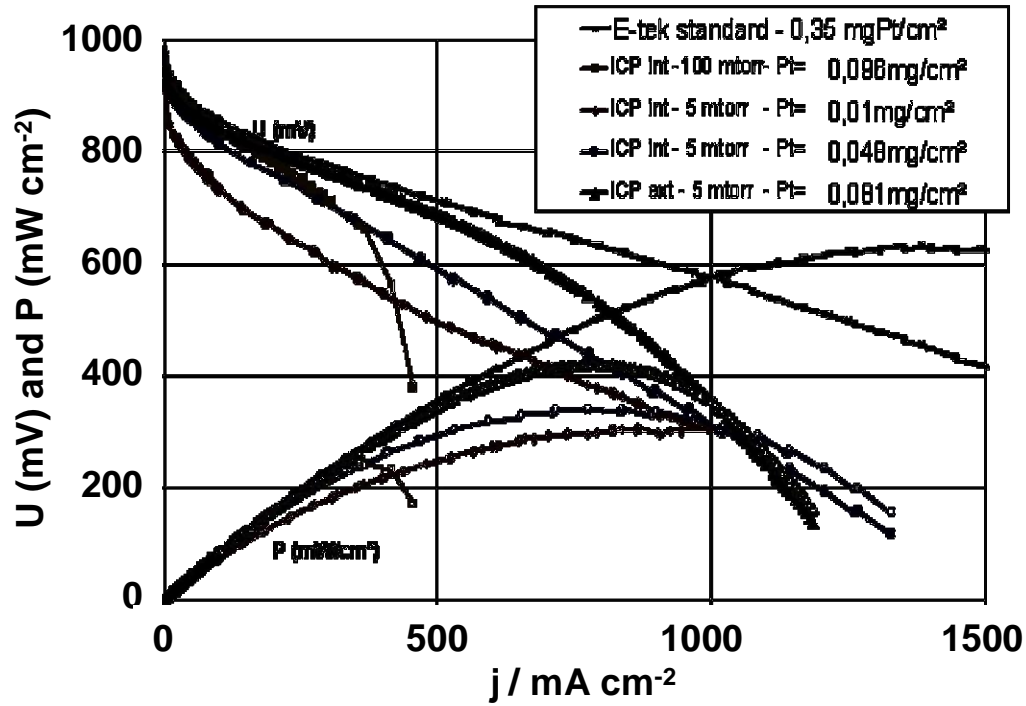


Figure 20: Electrical performances of several PEMFC with plasma cathodes made with different Pt loadings; H₂ and O₂ at 4 bars; cell at 80°C.

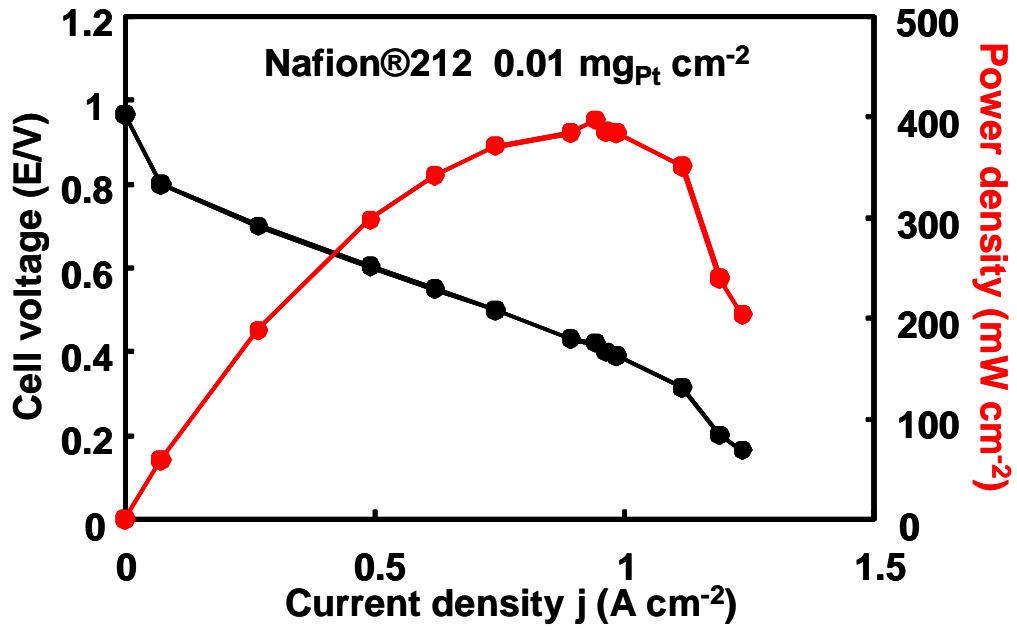


Figure 21: Fuel cell tests of a C-Pt co-deposited on an E-Tek diffusion layer [81].

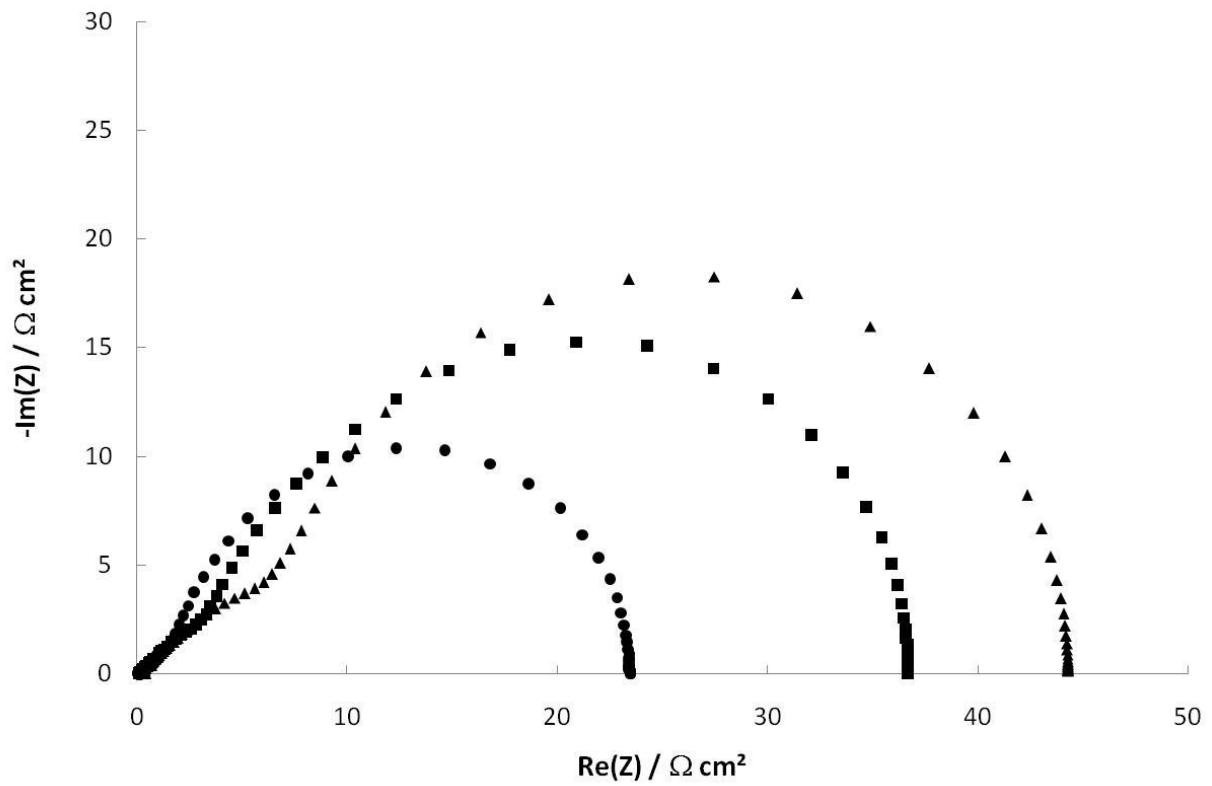


Figure 22: Simulated impedance diagrams for a catalyst layer ($\eta=0.4V$): (●) $\gamma=50 \text{ cm}^2 \text{ cm}^{-2}$ and $L=5 \text{ }\mu\text{m}$; (■) $\gamma=50 \text{ cm}^2 \text{ cm}^{-2}$ and $L=10 \text{ }\mu\text{m}$; (▲) $\gamma=100 \text{ cm}^2 \text{ cm}^{-2}$ and $L=20 \text{ }\mu\text{m}$.

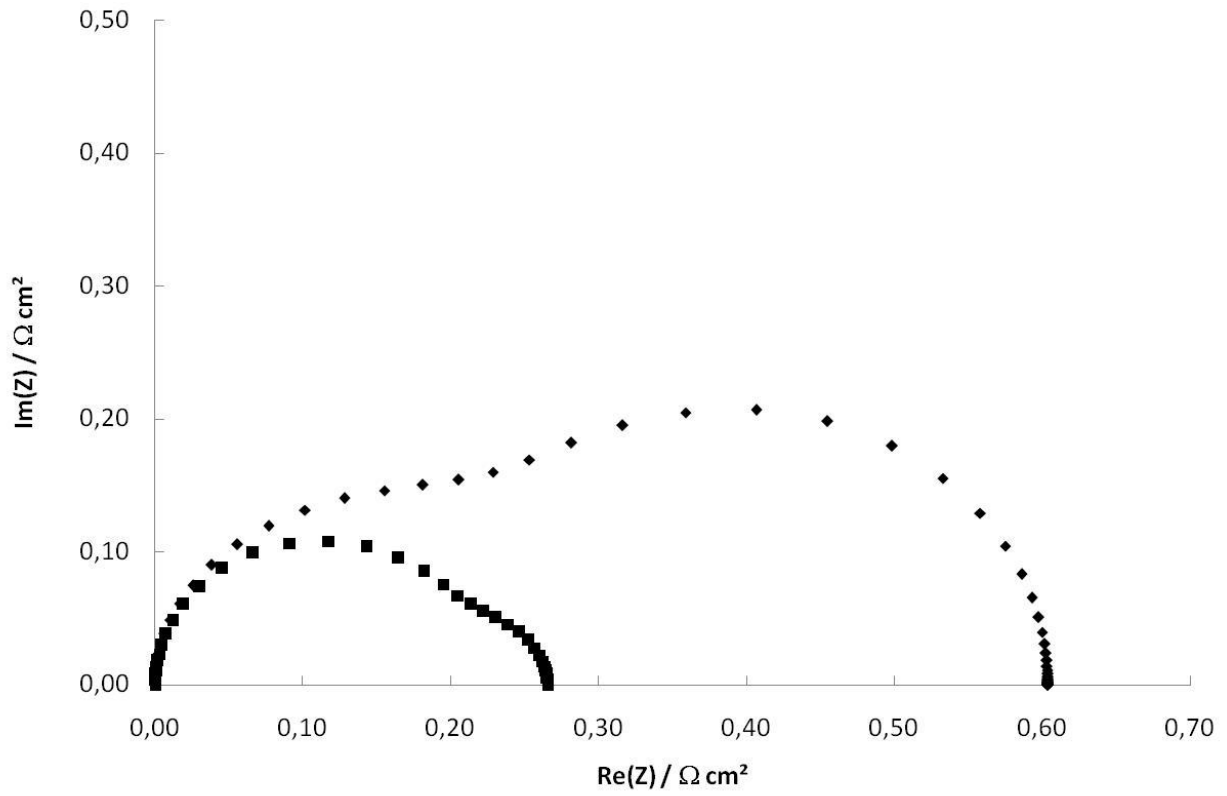


Figure 23: Simulated impedance diagrams for a GDE ($j=1 \text{ A cm}^{-2}$ and $L^{\text{GDL}}=500 \mu\text{m}$): (■)

$\epsilon^{\text{GDL}}=40\%$; (◆) $\epsilon^{\text{GDL}}=20\%$

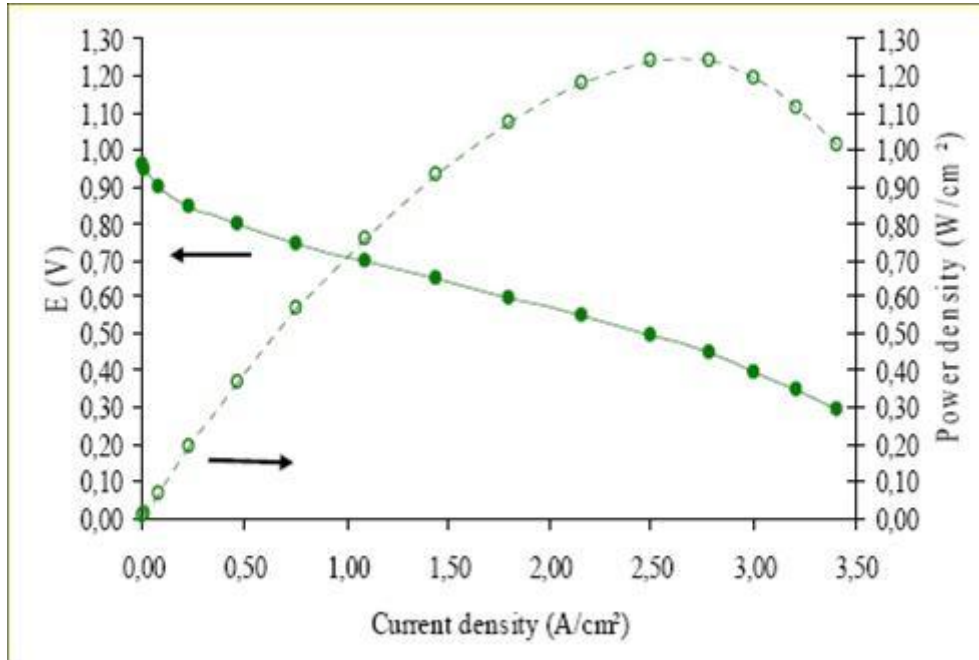


Figure 24: Performance of a MEA fabricated with Pt/C catalysts synthesized by the colloidal route. Membrane: Nafion 112; Symmetric electrodes : $0.35 \text{ mg}_{\text{Pt}} \text{ cm}^{-2}$; Pt loading 40 wt. % /C ($T_{\text{cell}} = T_{\text{huma}} = 70^{\circ}\text{C}$, $T_{\text{humc}} = 25^{\circ}\text{C}$, H_2 flow = 600 mL min^{-1} , O_2 flow = 300 mL min^{-1} , $P_{\text{H}_2} = P_{\text{O}_2} = 3 \text{ bar}$).

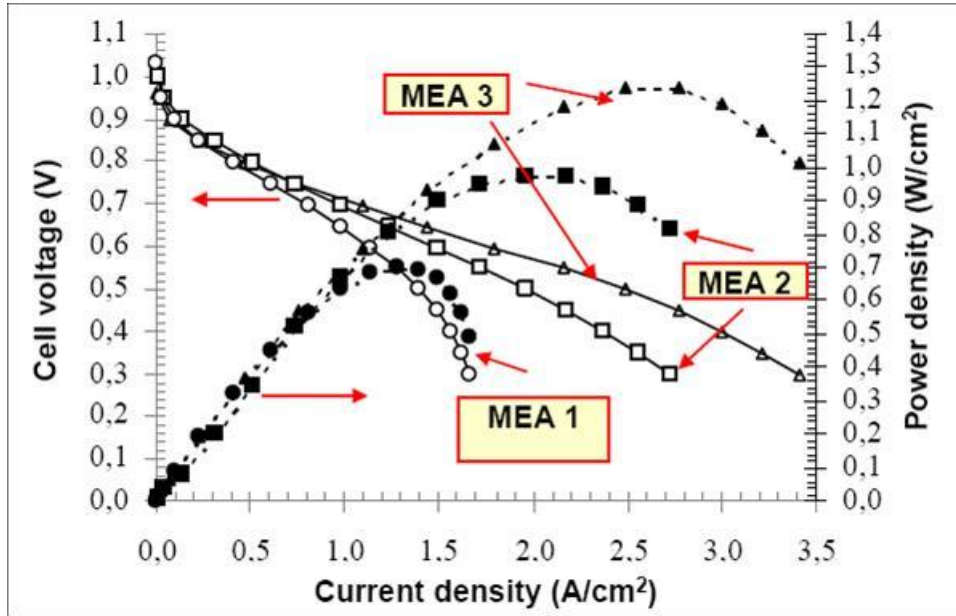


Figure 25: Comparison between commercial and homemade MEAs. MEA 1 : homemade anode via platinum plasma sputtering + homemade cathode via the colloidal route ($0.45 \text{ mg}_{\text{Pt}} \text{ cm}^{-2}$ total loading); MEA 2 : commercial MEA from FCS ($1.2 \text{ mg}_{\text{Pt}} \text{ cm}^{-2}$ total loading); MEA 3 : homemade electrodes via the colloidal route ($0.7 \text{ mg}_{\text{Pt}} \text{ cm}^{-2}$ total loading). $T_{\text{cell}} = 85^\circ\text{C}$; $T_{\text{huma}} = 80^\circ\text{C}$, $T_{\text{humc}} = 35^\circ\text{C}$, H_2 flow = 600 mL min^{-1} , O_2 flow = 300 mL min^{-1} , $P_{\text{H}_2} = P_{\text{O}_2} = 2.3 \text{ bar}$

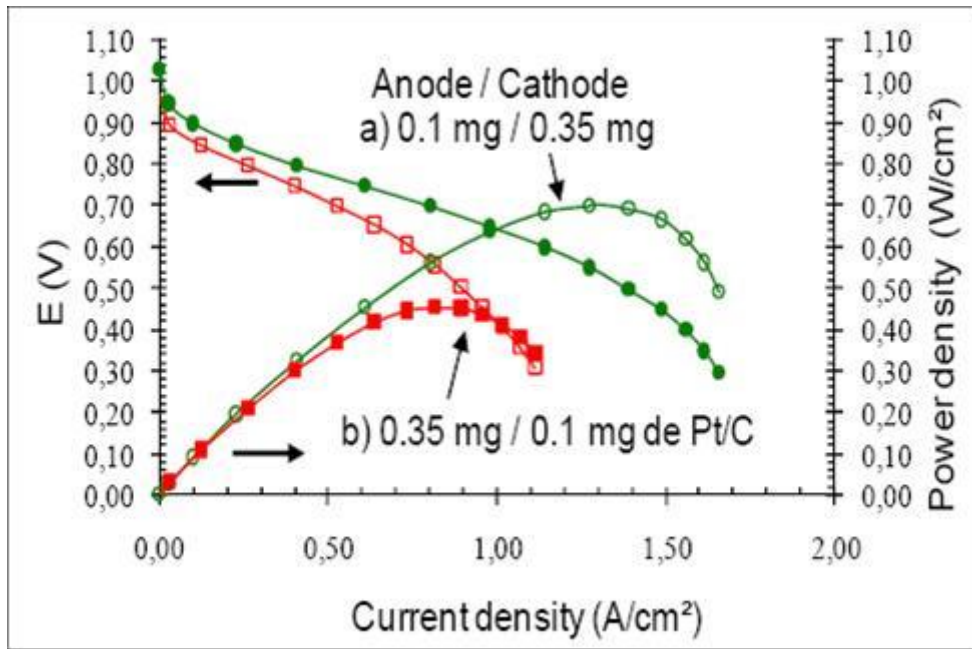


Figure 26: Performance of MEAs fabricated with Pt40wt.%/C electrodes synthesized by plasma sputtering ($0.1 \text{ mg}_{\text{Pt}} \text{ cm}^{-2}$) or by the colloidal route ($0.35 \text{ mg}_{\text{Pt}} \text{ cm}^{-2}$) and a Nafion[®] 112 membrane. ($T_{\text{cell}} = T_{\text{huma}} = 70^{\circ}\text{C}$, $T_{\text{humc}} = 25^{\circ}\text{C}$, H_2 flow = 600 mL min^{-1} , O_2 flow = 300 mL min^{-1} , $P_{\text{H}_2} = P_{\text{O}_2} = 3 \text{ bar}$).