



sp. nov. and sp. nov. (Kinorhyncha, Homalorhagida, Pycnophyidae), two new kinorhynchs from Spain with a reevaluation of homalorhagid taxonomic characters

Nuria Sánchez, Fernando Pardos, María Herranz, Jesús Benito

► **To cite this version:**

Nuria Sánchez, Fernando Pardos, María Herranz, Jesús Benito. sp. nov. and sp. nov. (Kinorhyncha, Homalorhagida, Pycnophyidae), two new kinorhynchs from Spain with a reevaluation of homalorhagid taxonomic characters. *Helgoland Marine Research*, 2010, 65 (3), pp.319-334. 10.1007/s10152-010-0226-z . hal-00639784

HAL Id: hal-00639784

<https://hal.science/hal-00639784>

Submitted on 10 Nov 2011

HAL is a multi-disciplinary open access archive for the deposit and dissemination of scientific research documents, whether they are published or not. The documents may come from teaching and research institutions in France or abroad, or from public or private research centers.

L'archive ouverte pluridisciplinaire **HAL**, est destinée au dépôt et à la diffusion de documents scientifiques de niveau recherche, publiés ou non, émanant des établissements d'enseignement et de recherche français ou étrangers, des laboratoires publics ou privés.

***Pycnophyes dolichurus* sp. nov. and *P. aulacodes* sp. nov. (Kinorhyncha, Homalorhagida, Pycnophyidae), two new kinorhynchs from Spain with a reevaluation of homalorhagid taxonomic characters**

Nuria Sánchez, Fernando Pardos*, María Herranz and Jesús Benito

Dpto. Zoología y Antropología Física, Facultad de Biología, Universidad, Complutense de Madrid, C/ José Antonio Novais 2, 28040, Madrid, Spain

**Corresponding author*

e-mail: fpardos@bio.ucm.es

Phone +34 91 394 4055

Fax +34 91 394 4947

Abstract

Two new species of the kinorhynch genus *Pycnophyes* are described from the Atlantic Ocean, Northwest Spain, and the Mediterranean Sea, East of Spain, using differential interference contrast microscopy and scanning electron microscopy (SEM): *Pycnophyes dolichurus* sp. nov. and *P. aulacodes* sp. nov. Taxonomic characters from cuticular structures in homalorhagids are discussed and reevaluated. The longitudinal positions of cuticular structures along the trunk are furthermore defined and the positional terminology is standardized. The distribution of the genus *Pycnophyes* in European waters is revised, revealing a poor knowledge of kinorhynch biogeography, probably due to incomplete sampling.

Keywords: *Pycnophyes*; Kinorhyncha; meiofauna; geographic distribution; cuticular characters; taxonomy.

Introduction

Kinorhyncha is a phylum of meiobenthic animals. Their total lengths never exceed more than 1 mm and they are found in marine or estuarine sediments exclusively, from coarse sand or shell gravel to very fine mud (Higgins, 1964a, 1983, 1988). Their body is covered by cuticle and divided into an anterior, eversible introvert with scalds, a neck and a trunk with 11 segments. For a description of the general anatomy and taxonomic characters of kinorhynchs see Higgins (1983), Kristensen and Higgins (1991) and Sørensen and Pardos (2008).

The order Homalorhagida Zelinka, 1896 comprises two families: Neocentrophyidae Higgins, 1969 and Pycnophyidae Zelinka, 1896, of which the latter is characterized by having the first trunk segment consisting of one tergal and one sternal plate. The sternal plate may be either partially or completely divided into three additional subunits: two episternal plates and one midsternal. Segments 2 to 11 are composed of one tergal and two sternal plates. Unlike many other species of kinorhynchs, members of the family Pycnophyidae have no middorsal spines on the trunk segments; however, many species present keel-like middorsal, posteriorly directed processes. Furthermore, cuticular setae may be present in various positions (Higgins, 1983, 1988). The family Pycnophyidae comprises two genera: *Pycnophyes* and *Kinorhynchus*, which can be discriminated by the absence of lateral terminal spines in the latter, whereas species of *Pycnophyes* show lateral terminal spines on segment 11 in both sexes. Males of *Pycnophyes* can be distinguished from females by the presence of ventrolateral tubules on segment 2 and penile spines on the terminal trunk segment (Zelinka, 1928).

Currently, the genus *Pycnophyes* includes 43 species. 11 species have been recorded from European waters: 7 in the Atlantic (Table 1) and 8 in the Mediterranean (Table 2), with 4 species being present in both waters. Furthermore species of other homalorhagid genera have been found in European waters: *Kinorhynchus* and *Paracentrophyes* have been reported from the Atlantic and Mediterranean (see references in Higgins and Adrianov, 1991; Adrianov and Malakhov, 1999; Sørensen and Pardos, 2008; Sørensen et al., 2010). *Pycnophyes quadridentatus* Zelinka, 1928 and *P. flagellatus* Zelinka, 1928 were originally described from the gulf of Naples (Zelinka, 1928), but the two species were subsequently considered conspecific non-*Pycnophyes*, and a new genus, *Paracentrophyes*, was erected to accommodate the new species combination (Higgins, 1983).

Along the Spanish coasts species of *Pycnophyes* have not previously been recorded, and studies about kinorhynchs in Spain have been limited to the Cyclorhagid genus *Echinoderes*. *E. canariensis* Greeff, 1869 was described from the Canary Islands, but was later considered as *species inquirendum* (Pardos et al., 1998). *E. dujardinii* was reported from the Balears Islands (Pagenstecher, 1875), and in 1998 two new species were described from the Cantabric Sea (NW Spain): *E. hispanicus* Pardos et al., 1998, and *E. cantabricus* Pardos et al., 1998, followed in 2008 by three additional new species: *E. isabelae* GªOrdóñez et al., 2008, *E. parrai* GªOrdóñez et al., 2008, and *E. neospinosus* GªOrdóñez et al., 2008 (see GªOrdóñez et al., 2008).

The aim of the present paper is to describe two new species of the genus *Pycnophyes* from the Spanish coasts - one from the Atlantic coast and one from the Mediterranean. These species are the first homalorhagids reported for the Iberian Peninsula and the first new species of *Pycnophyes* from the Mediterranean Sea since the times of Zelinka's monography in 1928. Furthermore, the present paper offers a complete and up to date overview of the *Pycnophyes* species distribution in the European coasts.

Materials and methods

Specimens of *Pycnophyes* were collected at various localities in the Mediterranean and Atlantic coasts. Data on sampling localities, including position, sediment type and depth are summarized in Table 3. Mediterranean sampling localities included Garrucha (Almeria, SE Spain) and Denia (Alicante, E Spain), visited in 1997, and Blanes (Gerona, NE Spain) in 1999. Sampling along the Atlantic coasts included stations in the fjords Ría de Ferrol and Ría de Ares (La Coruña, NW Spain) in 2007 and in Ría de La Coruña and Ría de Ares (La Coruña, NW Spain) in 2008 (Fig. 1). All samples were subtidal, and although exact depths are not available for all sampling stations, the deepest locality was in the Ría de Ares, with 45,4 m.

Sediment samples were taken using a Higgins Meiobenthic Dredge (Higgins, 1964b, 1988) that collects the upper centimeters of sediment. The meiofauna was extracted from sediment samples using the bubble and blot method (Higgins, 1964b, 1988; Sørensen and Pardos, 2008). Samples were fixed with 7-10% formalin and dyed with Rose Bengal. 300 kinorhynch specimens were sorted under a dissecting and mounted for LM either on regular slides or on Cobb-slides with either Hoyer's medium or Fluoromount-G®, following standard procedures (Sørensen and Pardos, 2008). The specimens were observed and photographed using an Olympus BX51 microscope equipped with differential interference (DIC) optics. Several specimens were dehydrated through a graded series of ethanol, transferred to acetone, critical point dried and mounted on aluminum stubs for observation and photography with a JSM 6400 JEOL scanning electron microscope.

Segment numbering follows the terminology established by Neuhaus and Higgins (2002) and applied by Sørensen and Pardos (2008). The present study revealed some inconsistencies in the literature regarding the terminology of systematic characters and their precise location along the body. In order to provide a sound basis for the present and future studies, we marked positions along longitudinal lines or bands on the trunk where taxonomically important cuticular characters usually appear in homalorhagids. These additions to the terminology are in agreement with the corresponding terminology established by Pardos et al. (1998) for cyclorhagid kinorhynchs. However, anatomical differences between cyclorhagids and homalorhagids prevent in some instances the application of the same terms and positions for both groups. Furthermore, and because of the expected variability, some positions refer to longitudinal lines, more fixed and stable, and others to bands or strips, where some slight variation among species or individuals may appear. Following the emended terminology, positions in homalorhagid kinorhynchs are defined as follows (see also Fig. 2):

Dorsal series

Middorsal (MD). Line. Refers to structures located dorsal on the midpoint of the tergal plate. This is the highest elevated point on the trunk, that appears triangular shaped in cross section. The position can only be observed from the dorsal side of a dorsoventrally mounted specimen.

Paradorsal (PD). Line. Refers to structures immediately adjacent to the middorsal position of the segment. The position can only be observed from the dorsal side of a dorsoventrally mounted specimen.

Subdorsal (SD). Band. Refers to structures located bilaterally on the dorsalmost 50% of the tergal area between the paradorsal position and the widest point of the trunk. The position can only be observed from the dorsal side of a dorsoventrally mounted specimen.

Laterodorsal (LD). Band. Refers to structures located bilaterally on the ventralmost 50% of the tergal area between the paradorsal position and the widest point of the trunk. The position can only be observed from the dorsal side of a dorsoventrally mounted specimen.

Positions of dorsal series are the same in both cyclorhagids and homalorhagids.

Lateral series

Paralateral (PL). Line. Refers to structures located bilaterally adjacent and dorsal to the midlateral position of the segment. The position can only be observed from the dorsal side of a dorsoventrally mounted specimen.

Midlateral (ML). Line. Refers to structures located bilaterally on the tergal plate at the lateral edge of the segment, as seen from both the dorsal and ventral sides. It marks the widest point of the segment.

Lateroventral (LV). Line. Refers to structures located bilaterally on the tergal plate, immediately adjacent to the tergosternal junction, as seen from the ventral side of a dorsoventrally mounted specimen.

LV is the ventralmost position of the lateral series in both cyclorhagids and homalorhagids. In homalorhagids, PL is the dorsalmost position of the series, whereas such a position does not apply to the

cyclorhagid trunk shape. Hence, ML is the dorsalmost position in the lateral series of cyclorhagids, and they have in addition two positions, lateral accessory (LA) and sublateral (SL), located in between ML and LV. None of these additional positions apply to the more triangular homalorhagid trunk shape. However, cuticular structures have been detected close, but still dorsal, to the ML position (the widest point of the segment). Hence, the new position paralateral (PL) is introduced to comply with structures in this position. In our system, the PL position is related to the ML in the same way as the PD is related to the MD, or the LA is related to LV in cyclorhagids.

Ventral series

Ventrolateral (VL). Band. Refers to structures located bilaterally on the sternal plate, adjacent to the tergosternal junction. It extends over the outer longitudinal quarter of the sternal plate. The position can only be observed from the ventral side of a dorsoventrally mounted specimen.

Ventromedial (VM). Band. Refers to structures located bilaterally at or near the middle of the sternal plate, between ventrolateral and paraventral bands. The position can only be observed from the ventral side of a dorsoventrally mounted specimen.

Paraventral (PV). Band. Refers to structures located bilaterally adjacent to the midventral line of the segment. It extends over the inner quarter of the sternal plate. The position can only be observed from the ventral side of a dorsoventrally mounted specimen.

Positions of ventral series are the same in both homalorhagids and cyclorhagids.

Both the dorsal and lateral series refer to positions on the tergal plate, whereas the ventral series refers to positions on the sternal plates. In the subsequent description the word 'pair' will refer to bilateral symmetrical structures. When two very closely positioned cuticular structures appear, they will be referred to as 'twins', having their correspondent pair of twin structures on the other side of the animal.

Results

Taxonomic account

Pycnophyes dolichurus sp. nov.

Order Homalorhagida Zelinka, 1896

Suborder Homalorhagae Zelinka, 1896

Family Pycnophyidae Zelinka, 1896

Genus *Pycnophyes* Zelinka, 1907

Examined material

A total of 34 specimens (18 males and 16 females) have been examined with DIC, and 5 additional specimens (3 females and 2 males) with SEM. All specimens were collected in Ría de Ares, NW Spain. The type series includes the holotype, an adult female (locality: Ría de Ares, station no. 070627. 3, position 43° 24.844'N, 008° 17.832'W, date 2007/06/27), the allotypic adult male (locality: Ría de Ares, station no. 080404.3, position 43° 25.400'N, 008° 20.769'W; date 2008/04/04) and 10 additional paratypes, 5 males and 5 females from the same locality as the allotype. All type specimens are mounted with Fluoromount-G® and deposited at the Zoological Museum, University of Copenhagen under accession numbers ZMUC KIN-430 (holotype), ZMUC KIN-431 (allotype), and ZMUC KIN-432 to KIN-441 (paratypes). Additional specimens remain in the personal collection of the first author.

Etymology

The species name, *dolichurus*, is masculine, derived from Greek *dolichos*, long, and *oura*, tail, and refers to the lateral terminal spines - the longest described so far.

Diagnosis

Pycnophyes with middorsal elevations from segment 2 to 7, that extend into middorsal processes in segments 8 and 9. Anterior margin of tergal plate of first trunk segment strongly denticulated. A pair of paradorsal setae on segments 4, 6 and 8 and other pair of twin paraventral setae on segments 3 to 7. Lateral terminal spines very long, more than 40% of trunk length. Males without big adhesive tubes on the sternal plates of the second segment (Figs. 3, 4a-b).

Description

Holotype, adult female (Fig. 3). All dimensions and measurements for the examined specimens are summarized in Table 4. The distribution of cuticular trunk structures is summarized in Table 5.

The introvert of the specimens examined was retracted or not extended enough to allow full description.

Neck: With 4 dorsal and 2 ventral placids (Fig. 5b).

Segment 1: Anterior dorsal margin of segment serrulated. Anterior lateral margins of tergal plate projecting into horn-like structures (Fig. 4e). Posterior margin forming a free flap that partially overlaps the next segment. The free flap is striated longitudinally, a feature corresponding to the "Knöpfchenreihen" of Zelinka (1928). These structures are in fact small cuticular pillars as shown with TEM by Neuhaus (1993: Fig 13) (Fig. 5b). Minute pectinate fringe. Two episternal plates and a trapezoidal midsternal plate (Fig. 5a). Episternal plates with sensory spots in ventromedial and ventrolateral positions, and with a muscle scar in ventromedial position. Tergal plate with three pairs of sensory spots (two subdorsal and one laterodorsal pairs), one pair of paralateral setae adjacent to the laterodorsal sensory spot (Figs. 3, 4e), and one pair of subdorsal muscular scars. Segments furthermore with one pair of subcuticular glands (Fig. 5b).

Segment 2: Pachycycli of tergal and sternal plates well developed. Conspicuous secondary fringe of tiny, denticulated cuticular hairs all around the segment. Sternal plates with a pair of ventromedial sensory spots and a pair of ventrolateral setae (Fig. 5c). One pair of longitudinal, ventrolateral muscular scars anterior to the secondary fringe. Tergal plate with smooth posterior margin showing a hairy middorsal elevation, not protruding beyond the segment margin. One pair of paradorsal sensory spots near posterior margin. Prominent paradorsal butterfly-like structures that correspond to subcuticular atria of sensory spots, only visible with DIC optics. One pair of subdorsal twin sensory spots and one pair of lateroventral setae. Males always without paired adhesive tubes that otherwise typically are found on the second segment of the sternal plates in species of *Pycnophyes*.

Segment 3: Sternal plates with a pair of paraventral twin setae and a pair of ventromedial sensory spots (Figs. 4f, 5c). The position of the paraventral twin setae is very consistent in the studied specimens. The only observed variation was displayed as a slight displacement of one of the twin setae in a few specimens. This kind of variation may appear at any segment. Tergal plate with a middorsal elevation, one pair of paradorsal sensory spots near posterior margin with their associated subcuticular atria, one pair of subdorsal sensory spots, one pair of laterodorsal setae and one pair of lateroventral setae. Secondary fringe similar to fringe on segment 2. One pair of longitudinal ventrolateral muscular scars present anterior to the secondary fringe.

Segment 4: Tergal and sternal plates same as those on segment 3 but with one pair of paradorsal setae flanking the middorsal elevation. Secondary fringe similar to fringe on segment 2. One pair of longitudinal ventrolateral muscular scars anterior to the secondary fringe.

Segment 5: Sternal plates similar to those on segment 3 except for the presence of a pair of ventrolateral setae (Fig. 4f). Tergal plate same as on segment 3 except for the absence of lateroventral setae. Secondary fringe similar to fringe on segment 2. One pair of longitudinal ventrolateral muscular scars present anterior to the secondary fringe.

Segment 6: Sternal plates same as on segment 3. Tergal plate same as on segment 4 except for the laterodorsal setae that are situated slightly more laterally. Secondary fringe similar to fringe on segment 2. One pair of longitudinal ventrolateral muscular scars present anterior to the secondary fringe.

Segment 7: Sternal plates same as on segment 3. Tergal plate similar to plate on segment 6, except for the absence of paradorsal setae flanking the middorsal elevation (Fig. 4c). Secondary fringe similar to fringe on segment 2. One pair of longitudinal ventrolateral muscular scars present anterior to the secondary fringe.

Segment 8: Sternal plates without paraventral setae. Segment with a pair of ventromedial sensory spots and one pair of ventrolateral twin setae. The presence of ventrolateral twin setae is very consistent in the animals studied, however a little variation regarding the relative position of the two setae can be detected in different specimens. Midventral thickenings of ventral pachycycli (Mittelwülste) present near anteromesial margin of segment. Tergal plate same as on segment 6. The middorsal process protruding beyond the segment margin appears bigger and more pointed than the corresponding structures of preceeding segments (Fig. 5d). Secondary fringe similar to fringe on segment 2. One pair of longitudinal ventrolateral muscular scars anterior present to the secondary fringe.

Segment 9: Sternal plates without paraventral setae. Sternal plates with pair of ventromedial and ventrolateral sensory spots. The latter is located in twin positions with a pair of ventrolateral setae. Midventral thickenings of ventral pachycycli (Mittelwülste) present near anteromesial margin of segment. One pair of muscular scars, visible only with LM, present in paraventral position. Tergal plate same as on segment 7, except for the absence of lateroventral setae, and the presence of a protruding middorsal process that appears more developed and pointed than on segment 8 (Fig. 4d). Secondary fringe similar to fringe on segment 2. One pair of longitudinal ventrolateral muscular scars present anterior to the secondary fringe.

Segment 10: Sternal plates with a pair of paraventral sensory spots near the posterior margin of segment. Midventral thickenings of ventral pachycycli (Mittelwülste) present near anteromesial margin of segment (Fig. 5c). Tergal plate with one pair of subdorsal sensory spots and one pair of twin lateroventral setae. Laterodorsal setae not present. Posterior margin pointed but without middorsal elevation and with a pair of paradorsal sensory spots (Fig. 5f). Secondary fringe similar to fringe on segment 2. One pair of longitudinal ventrolateral muscular scars anterior to the secondary fringe.

Segment 11: Lateral terminal spines very long, almost half of the trunk length (Fig. 5e). Males with two pairs of penile spines near anterior segment margin (Fig. 3c).

Taxonomic account

Pycnophyes aulacodes sp. nov.

Order Homalorhagida Zelinka, 1896

Suborder Homalorhagae Zelinka, 1896

Family Pycnophyidae Zelinka, 1896

Genus *Pycnophyes* Zelinka, 1907

Examined material

A total of 36 specimens (14 males and 22 females) were examined with DIC, and 6 additional specimens (3 males and 3 females) with SEM. The specimens were collected in Ría de Ares and Ría de La Coruña, NW Spain; Blanes, NE Spain and Garrucha and Denia, E Spain. The type series includes the holotypic adult female (locality: Ría de Ares, station no. 070627.1, position: 43° 25.064'N, 008° 16.558'W, date 2007/06/27), allotypic adult male (locality: Ría de Ares, station no. 080404.3; position: 43° 25.400'N, 008° 20.769'W; date

2008/04/04), and 10 paratypes, 5 males and 5 females from the same locality as the holotype. All type specimens are mounted in Fluoromount-G[®] and deposited at the Zoological Museum, University of Copenhagen under accession numbers ZMUC KIN-442 (holotype), ZMUC KIN-443 (allotype), and ZMUC KIN- 444 to KIN-453 (paratypes). Additional specimens remain in the personal collection of the first author.

Etymology

The species name, *aulacodes*, is masculine, derived from Greek *aulakodes*, meaning “furrowlike”, and refers to the prominent and slit-like subdorsal muscular scars.

Diagnosis

Pycnophyes with middorsal elevations present on segments 1 to 9. Paradorsal setae present on segments 4 and 6. Tergal anterior margin of segment 1 finely denticulated. Without lateroventral setae on segments 3, 5, 7 and 9. Conspicuous oblique, groove-like muscular scars in the subdorsal position, and crescentic muscular scars in the paraventral position present on all segments (Figs. 6, 8 b-f).

Description

Holotype, adult female. All dimensions and measurements of the examined specimens are summarized in Table 6. The distribution of cuticular trunk structures is summarized in Table 7.

Neck: Placids could not be observed.

Segment 1: Anterior margin of tergal plate serrated. Lateral margins of tergal plate extend into horn-like structures. The posterior dorsal segment margin free, covering the anterior edge of the following segment and overlaps some mucous gland openings (Fig. 7e). This area often appears filled with a mixture of mucus and organic debris, a picture repeated for all trunk segments. Pectinate fringe inconspicuous in the dorsal region but more developed in the ventral region. Ventral side with two episternal plates and a trapezoidal midsternal plate. The midsternal plate shows a midventral, pointed, posteriorly orientated projection (Figs. 7f, 8b). Each episternal plate with a conspicuous ventrolateral sensory spot near the posterior margin and a ventromedial muscular scar in the middle region of plate. Tergal plate with a pair of paralateral setae and two pairs of sensory spots, one paradorsal and near the groove-like muscular scars, and one laterodorsal pair. Additionally there is a small middorsal elevation, which never surpasses the posterior margin of the segment, with a pair of paradorsal sensory spots near its posterior margin. Prominent paradorsal butterfly-like structures that correspond to subcuticular atria of sensory spots, only visible with DIC optics (Figs. 8a, 8c).

Segment 2: Sternal plates with a pair of crescentic paraventral muscular scars and a pair of ventromedial sensory spots (Fig. 8b). Females furthermore with a pair of ventrolateral setae. Pectinate fringe strongly reduced, only visible with SEM. Tergal plate with a pair of lateroventral and laterodorsal setae. Subdorsal twin sensory spots and one pair of laterodorsal sensory spots close to the laterodorsal setae are present. Middorsal elevation with a pair of paradorsal, marginal sensory spots (Fig. 8c). Subcuticular structure similar to the one on segment 1. A pair of subdorsal groove-like, oblique muscular scars (Fig. 8c) is present. Males always with one pair of big, adhesive tubes located ventromedially on the sternal plates (Fig. 6c). Secondary fringe near anterior margin, parallel to the segment edge with two subdorsal and two ventromedial indentations (Fig. 8b).

Segment 3: Sternal plates with a pair of paraventral crescentic muscular scars and a pair of ventromedial setae near more lateral sensory spot (Fig. 8b). Tergal plate with middorsal elevation and associated structures similar to those on segment 2, a pair of subdorsal groove-like muscular scars, a pair of laterodorsal setae, and a pair of sensory spots in paradorsal, subdorsal and laterodorsal positions. Secondary fringe same as fringe on segment 2 (Fig. 7c).

Segment 4: Tergal and sternal plates same as on segment 3, except for the presence of a pair of paradorsal setae in the middorsal elevation and a pair of lateroventral setae. Secondary fringe as fringe on segment 3.

Segment 5: Sternal plates similar to those on segment 3 except for the presence of a pair of ventrolateral setae. Tergal plate same as on segment 3 (Fig. 7d).

Segment 6: Sternal and tergal plates same as those on segment 4.

Segment 7: Sternal and tergal plates same as those on segment 3 (Fig. 8d-e).

Segment 8: Sternal plates same as those on segment 3. One pair of anteromesial thickenings of ventral pachycycli (Mittelwülste) present near anterior segment margin. Tergal plate same as on segment 2 except for the presence of an unpaired paradorsal seta in the right side of middorsal elevation. Middorsal elevation wider than those on the previous segments.

Segment 9: Sternal plates same as those on segment 3, but in addition with one pair of anteromesial thickenings of ventral pachycycli (Mittelwülste) near anterior margin of segment. Tergal plate same as on segment 8 but without lateroventral and paradorsal setae. Middorsal elevation even wider and less conspicuous than the one on the previous segment.

Segment 10: Sternal plates with a pair of droplet-shaped muscular scars and a pair of paraventral sensory spots near the posterior segment margin (Fig. 8f). Anteromesial thickenings of ventral pachycycli (Mittelwülste) present near anterior margin. Tergal plate with a pair of groove-like muscular scars, a pair of paradorsal and laterodorsal sensory spots, and a pair of lateroventral setae. Middorsal elevation not present.

Segment 11: With lateral terminal spines. Males with two pairs of penile spines (Figs. 6d, 8f).

Discussion

Taxonomy

A commonly used diagnostic trait for species of the genus *Pycnophyes* is the presence and appearance of the middorsal- (Higgins, 1983) or spinose processes, following the terminology established by Higgins (1983) and summarized by Sørensen and Pardos (2008). The middorsal process is a longitudinal, keel-like protruding edge located in the middorsal line of the segment. It may or may not surpass the posterior margin of the segment, and hence form a free tip. Two types are usually recognized: obtuse/rounded ones or pointed/horned ones. The two types are not easily distinguished from each other in practice. Here, we identify the obtuse/rounded type with a “middorsal elevation” that never surpasses the posterior edge of the segment, and the pointed/horned type with a “middorsal process” that surpasses the posterior segment edge. It should be stressed that both types of processes can be present in the same individual but on different segments. Regarding this trait, reported very confusingly in the literature, *Pycnophyes dolichurus* sp. nov. shows both middorsal processes (pointed, protruding) and middorsal elevations (rounded, not protruding) whereas *P. aulacodes* sp. nov. has only middorsal elevations.

Pycnophyes dolichurus sp. nov. has middorsal elevations on segment 2 and the following five segments. On segments 8 and 9 these elevations are modified into middorsal processes. All middorsal elevations and processes are equipped with paradorsal, subcuticular, butterfly-like atria. Diagnostic characters for the species include a tergal anterior margin of the first trunk segment being strongly denticulated, a pair of paradorsal setae on segments 4, 6 and 8, and pairs of twin paraventral setae on segments 3 to 7. Furthermore its lateral terminal spines are conspicuously long, more than 40% of trunk length. A feature not very common in the genus is the absence of the characteristic big adhesive tubes on the sternal plates of segment 2 in males. This last trait is only shared with three other species in the genus, namely *P. ecphantor* Higgins, 1983, *P. egyptensis* Higgins, 1966, and *P. longicornis* Higgins, 1983, but all of them have a different distribution of setae: *P. ecphantor* and *P. egyptensis* have middorsal setae and *P. longicornis* has setae present in females only, whereas *P. dolichurus* sp. nov. has no middorsal but paradorsal setae in different segments (Higgins, 1966, 1983). Two additional species, *P. mokievskii* Adrianov, 1995, and *P. spitsbergensis* Adrianov 1995, have confusing descriptions, since the

364 adhesive tubes on segment 2 are reported in the text but not illustrated in drawings (see Adrianov 1995, Figs. 7,
365 11 and 13).

366 *Pycnophyes dolichurus* sp. nov. is the species of the genus with the longest lateral terminal spines described so
367 far. Other species, including *P. longicornis*, *P. chiliensis* Lang, 1953, and *P. canadensis* Higgins and Korczynski,
368 1989 also have extraordinary long lateral terminal spines - a character that enables the observer to identify these
369 species of *Pycnophyes* easily. However, none of them present a TL/LTS proportion similar to *P. dolichurus* sp.
370 nov. (Lang, 1953; Higgins, 1983; Higgins and Korczynski, 1989). From these, the closest species in terms of
371 lateral terminal spine length is *P. longicornis* (37.7 % of TL in males). However, this species shows a transverse
372 mark at each lateral terminal spine about 3/4 from its base. Such marks are not present in *P. dolichurus* sp. nov.

373 The presence of paired paradorsal setae in *Pycnophyes dolichurus* sp. nov. is shared with *P. parasanjuanensis*
374 Adrianov and Higgins, 1996, *P. greenlandicus* Higgins and Kristensen, 1988, *P. faveolus* (in Brown (1985), see
375 Adrianov & Malakhov, 1999) and *P. kielensis* Zelinka, 1928. However, *P. dolichurus* sp. nov. possesses
376 paradorsal setae on segments 4, 6 and 8, whereas such setae are found on segment 6 only in *P. parasanjuanensis*
377 and on segment 8 in *P. greenlandicus* (Higgins and Kristensen, 1988; Adrianov and Higgins, 1996). Also, *P.*
378 *faveolus* and *P. kielensis* have paradorsal setae, but in these species the setae are not only restricted to segments
379 4, 6 and 8. Hence, *P. faveolus* has paradorsal setae on five segments (Brown, 1985), whereas such setae are
380 present on at least eight segments in *P. kielensis* (not reported by Zelinka (1928), but see Neuhaus (1993) and
381 Adrianov and Malakov (1999)).

382 Moreover, *Pycnophyes dolichurus* sp. nov. shows unique characters that are not present in any other species of
383 the genus, such as one pair of twin setae on every sternite of segments 3-7.

384 *Pycnophyes aulacodes* sp. nov. has middorsal elevations with subcuticular butterfly-like atria on
385 segment 1 and following segments, and on segments 4 and 6 also a pair of adjacent paradorsal setae is present.
386 Tergal anterior margin of segment 1 is minutely denticulated, and lateroventral setae are lacking on segments 3,
387 5, 7 and 9.

388
389 *Pycnophyes aulacodes* sp. nov. is easily recognized by the presence and appearance of muscular scars on all
390 segments. The scars are groove-like on the tergal plates, and appear crescentic on the sternal plates of segments 2
391 to 9. It should be noted that these cuticular marks show some variation among specimens, being even more
392 conspicuous in older animals, where the cuticle becomes thicker with age. Furthermore, some species
393 descriptions dating back to the middle of the twentieth century do not document this feature. Hence, this
394 character should be used with caution when comparing species and specimens, and a revision and redescription
395 of many species in the genus would be needed in order to come to sound taxonomic statements.

396 There are some species in which similar groove-like and crescentic muscular scars have been reported, including
397 *P. beaufortensis* Higgins, 1964, *P. egyptensis*, *P. corrugatus* Higgins, 1983, *P. ecphantor* and *P. neuhausi*
398 Martorelli and Higgins, 2004 (Higgins, 1964b, 1966, 1983; Martorelli and Higgins, 2004). However, *P.*
399 *beaufortensis*, *P. corrugatus* and *P. ecphantor* have no middorsal elevation on segment 1. Moreover, none of
400 these three species have paradorsal setae, although *P. corrugatus* and *P. ecphantor* show middorsal setae 2-9 and
401 2, 4-8 respectively. *P. egyptensis* differs from *P. aulacodes* sp. nov. in having no middorsal elevations or
402 processes, and although middorsal setae are present (4-10, see Higgins, 1966), they never possess paired
403 paradorsal setae. *Pycnophyes neuhausi* has a middorsal elevation on segment 1 but the posterior margin of this
404 segment extends posteriorly well over the following segment. Moreover, *P. aulacodes* sp. nov. and *P. neuhausi*
405 differ in their distributions of ventral setae (two pairs of setae on the sternal plates in segments 3-5 of *P.*
406 *neuhausi* and only one in *P. aulacodes*) and in the absence of middorsal setae in *P. neuhausi*.

407 The presence of paradorsal setae on the segments 4 and 6 in *Pycnophyes aulacodes* sp. nov. is shared with *P.*
408 *dolichurus* sp. nov., and as stated above, *P. parasanjuanensis*, *P. greenlandicus*, *P. faveolus* and *P. kielensis*
409 (Zelinka, 1928; Brown, 1985; Higgins and Kristensen, 1988; Adrianov and Higgins, 1996; Adrianov and
410 Malakhov, 1999). However, both *P. parasanjuanensis* and *P. greenlandicus* show paradorsal setae on one

segment only, whereas *P. faveolus* and *P. kielensis* show paradorsal setae on more segments or the setae have a different distribution. Hence, *P. aulacodes* sp. nov. can easily be distinguished from any known species in the genus.

Character evaluation

The main source of mistakes in the determination of specimens in the genus *Pycnophyes* is the triangular shape of the animals in cross section, which makes it difficult to distinguish and locate some diagnostic characters using LM. Due to this, the ability to make accurate observations of the dorsal or ventral regions of the specimens depends on the specimen's orientation (dorsal or ventral up) on the glass slide. In addition, a further consequence is the difficulty to locate and discriminate laterodorsal structures because they often appear too close the lateral margins of the specimen.

These problems are best solved by the use of SEM, which allows observation from any point of view. However, SEM is restricted to provide information about cuticular surface characters, whereas LM allows observation of subcuticular structures. Hence, the optimal examination of a species is obtained when the two techniques are used in combination.

Finally, there are some characters used in identification keys that are ambiguous and lead to confusion. For example, the determination of whether a middorsal process is more or less rounded or pointed, or the exact consideration of a middorsal process that exceeds or not exceeds the segment margin - a feature that may vary according of the contraction or squeezing state of the specimen. Those are very subjective characters and their accurate evaluation depends mostly on the researcher view and ability. Unfortunately, most, if not all keys for homalorhagid kinorhynchs make frequent use of those characters and features. We hope that the description of the new species presented here and other to come in a near future will enable the preparation of completely new, unambiguous keys for homalorhagid kinorhynchs.

Faunistic remarks

Information on kinorhynch distribution is scarce. The available data refer only to the species found in sampling localities randomly selected by several authors throughout a long timespan, whereas only few expanded areas or long coast lines have been object of systematic sampling campaigns. Hence, the distribution patterns of most kinorhynch species are not fully understood. This paper is part of a long-term study along the coasts of Spain, facing the Atlantic Ocean to the north and west and the Mediterranean to the east.

The first recordings of species of the genus *Pycnophyes* along the Spanish coasts were surprising. Since species of the genus not previously have been recorded from Iberian Peninsula, it was expected that the specimens collected in the sampled localities, from Galicia (NW) to the Costa Brava (NE), including Almeria (SE) and the Levantine coast (E) would, at least in part, be conspecific with those that had been reported from localities close to the Iberian Peninsula. In fact, and as stated previously, 11 species of this genus have been recorded from the Atlantic Ocean and the Mediterranean Sea (Reinhard 1881; Southern, 1914; Zelinka, 1928; Reimer, 1963; Higgins, 1983; Adrianov and Malakhov, 1999).

However, none of the previously recorded species were encountered among the specimens collected for the present study. This excluding distribution may be due to two reasons. First, the genus is most probably more diverse in European waters than we know currently, hence the new species described in the present contribution will probably appear at other Atlantic and Mediterranean localities as well. Secondly, the meiofauna distribution and in particular the kinorhynch distribution is strongly patched (Gray and Rieger, 1971; McLachlan, 1978; Findlay, 1981; Higgins, 1988). As a consequence, it is highly probable that the present sampling campaign, although more intense than other sampling around Europe, has not revealed all existing species around the

Iberian Peninsula. Therefore, it should be expected that future samplings in the same or in other localities will demonstrate the presence of different species of *Pycnophyes* that already has been recorded elsewhere in Europe.

Pycnophyes dolichurus sp. nov. appeared only in the Ría de Ares, Galicia, NW Spain, whereas *P. aulacodes* sp. nov. was found on the same locality but also at the nearby Ferrol and La Coruña, as well as in the Mediterranean localities of Blanes, Garrucha and Denia, NE, SE and E Spain. This geographical distribution suggests that *P. dolichurus* sp. nov. has a more restricted distribution, whereas *P. aulacodes* sp. nov. probably occurs all along the Iberian coast. Nevertheless, more intense sampling campaigns should be carried out to confirm these rather different biogeographical distributions.

In addition, the two species also appear to differ in their sediment preferences. From our results, none of them appeared in shell gravel or amphioxus sand (samples not shown in Table 3), and *P. dolichurus* sp. nov. never appeared in muddy sediments. *P. dolichurus* sp. nov. is found in sandy sediments, and mostly in the fine sand. *P. aulacodes* sp. nov. prefer silty and sandy sediments, apparently with a preference for the more muddy ones.

Acknowledgements

This paper received financial support from the Research Project CGL 2005-04310 (Ministerio de Ciencia y Tecnología, Government of Spain). The authors want to thank Dr. V. Urgorri, Director of La Graña Marine Station in Ferrol; Dr. S. Parra, Director of Instituto Español de Oceanografía at La Coruña, and Dr. M. Maldonado, from the Instituto de Estudios Avanzados in Blanes for their enthusiastic help during sampling campaigns. Thanks are also due to the staff of the Centro de Microscopía Luis Bru (UCM) for their excellent technical assistance with SEM.

The materials, procedures and techniques used in this research comply with the current laws of Spain.

References

- Adrianov AV (1995) The first description of kinorhynchs from the Spitsbergen Archipelago (Greenland Sea), with a key to the genus *Pycnophyes* (Homalorhagida, Kinorhyncha). Canadian Journal of Zoology 73: 1554-1566
- Adrianov AV, Higgins RP (1996) *Pycnophyes parasanjuanensis*, a new kinorhynch (Kinorhyncha: Homalorhagida: Pycnophyidae) from San Juan Island, Washington, U.S.A. Proceedings of the Biological Society of Washington 109(2):236-247
- Adrianov AV, Malakhov VV (1999) Cephalorhyncha of the world ocean. KMK Scientific Press, Ltd. Moscow
- Băcescu M, Băcescu E (1956) Kinorhynchii. Reprezentanti ai unei clase de animale, noua pentru fauna Romineasca. Comunicarile Academiei Republicii Populare Romane 6: 543-549.
- Băcescu M (1968) Class Kinorhyncha. Identification of the Black Sea and Azov Sea fauna. Naukova Dumka 1: 237-250
- Brown R (1985) Developmental and taxonomic studies of Sydney Harbour Kinorhyncha. Ph.D. thesis. Macquarie University, Australia, pp 193 + figures and plates
- Bruce JR, Colman JS, Jones NS (1963) Marine fauna of the Isle of Man and its surrounding seas. Liverpool Marine Biology Committee LMBC Memoirs 36. 307 pp.
- Findlay SEG (1981) Small scale spatial distribution of meiofauna for benthos communities. Oecologia 6:176-190

- 494 Gray JS, Rieger RM (1971) A quantitative study of the meiofauna of an exposed sandy beach, at Robin Hood's
495 Bay, Yorkshire. Journal of the Marine Biological Association of U.K. 51: 1-19
- 496 GªOrdóñez, D., F. Pardos, J. Benito (2008) Three new *Echinoderes* (Kinorhyncha, Cyclorhagida) from North
497 Spain, with new evolutionary aspects in the genus. Zoologischer Anzeiger 247:95-111
- 498 Higgins RP (1964a) A method for meiobenthic invertebrate collection. American Zoologist 4: 291
- 499 Higgins RP (1964b) Three new Kinorhynchs from the North Carolina Coast. Bulletin of Marine Science of the
500 Gulf and Caribbean 14 (3): 479-493
- 501 Higgins RP (1966) Faunistic Studies in the Red Sea (in Winter, 1961-1962). Part II: Kinorhynchs from the Area
502 of Al-Ghardaqa. Zoologisches Jahrbücher, Systematik, Oekologie und Geographie der Tiere 93: 118-126
- 503 Higgins RP (1983) The Atlantic barrier reef Ecosystem at Carrie Bow Cay Belize II: Kinorhyncha. Smithsonian
504 Contributions to the Marine Science 18: 1-131
- 505 Higgins RP (1988) Kinorhyncha. In: Higgins RP and Thiel H (eds) Introduction to the Study of Meiofauna.
506 Smithsonian Institution Press, Washington DC, pp 328-331
- 507 Higgins RP, Kristensen R M (1988) Kinorhynch from Disko Island, West Greenland. Smithsonian Contributions
508 to Zoology 458: 34-54
- 509 Higgins RP, Korczynski RE (1989) Two new species of *Pycnophyes* (Homalorhagida, Kinorhynch) from the
510 Canadian coast of Beaufort Sea. Canadian Journal of Zoology 67: 2056-2064
- 511 Higgins RP, Adrianov A (1991) Kinorhyncha from the Black Sea. I. Redescription of *Kinorhynchus*
512 *paraneapolitanus*. Transactions of the American Microscopical Society 110(4): 328-336
- 513 Huys R, Coomans A (1989) *Echinoderes higginsi* sp. n. (Kinorhyncha, Cyclorhagida) from the southern North
514 Sea with a key to the genus *Echinoderes* Claparede. Zoologica Scripta 18: 211-221.
- 515 Kristensen RM, Higgins RP (1991) Kinorhyncha. In: Harrison FW, Ruppert EE (eds) Microscopic anatomy of
516 invertebrates, the Aschelminthes, vol 4. Wiley, New York, pp 377-404
- 517 Lang K (1936) Undersökningar över Öresund, XXI: Einige Kleintiere aus dem Öresund. Kungliga Fysiografiska
518 Sällskapets Handlingar, new series 46 (10): 1-8
- 519 Lang K (1953) Reports of the Lund University Chile Expedition 1948-49. 9. Echinoderida. Kunngl.
520 Fysiografiska. Sällskapet I Lund Handlingar, N.F 64: 1-8
- 521 Marinov T (1964) On the microzoobenthos Fauna of the Black Sea (Kinorhyncha and Halacaridae). Bulletin of
522 the Institute of Fish Culture and Fisheries, Varna KH 4: 61-71.
- 523 Martorelli S, Higgins RP (2004) Kinorhyncha from the stomach of the shrimp *Pleoticus muelleri* (Bate, 1888)
524 from Comodoro Rivadavia, Argentina. Zoologischer Anzeiger 243: 85-98
- 525 McIntyre AD (1962) The class Kinorhyncha (Echinoderida) in British waters. Journal of the Marine Biological
526 Association of U.K. 42: 503-509
- 527 McLachlan A (1978) A quantitative analysis of the meiofauna and the chemistry of the redox potential
528 discontinuity zone in a sheltered sandy beach. Estuarine and Coastal Marine Science 7:275-290
- 529 Neuhaus B (1988) Ultrastructure of the Protonephridia in *Pycnophyes kielensis* (Kinorhyncha, Homalorhagida).
530 Zoomorphology 108: 245-253

- 531 Neuhaus B (1993) Postembryonic development of *Pycnophyes kielensis* and *P. dentatus* (Kinorhyncha) from the
532 North Sea. *Microfauna Marina* 8: 163-193
- 533 Neuhaus B, Higgins RP (2002) Ultrastructure, biology and phylogenetic relationships of Kinorhyncha.
534 *Integrative and Comparative Biology* 42:619–632
- 535 Nyholm KG (1947) *Campyloderes*: an “Antarctic” genus of Echinoderida off the West coast of Sweden. *Arkiv*
536 *för Zoology* 39 A: 1-6
- 537
538 Pagenstecher A (1875) *Echinoderes Sieboldii*. *Zeitschrift für Wissenschaftliche Zoologie supplement* 25(S):
539 117-123
- 540
541 Pardos F, Higgins RP, Benito J (1998) Two new *Echinoderes* (Kinorhyncha, Cyclorhagida) from Spain
542 including a reevaluation of kinorhynch taxonomic characters. *Zoologischer Anzeiger* 237:195–208
- 543 Reimer L (1963) Zur Verbreitung der Kinorhyncha in der Mittleren Ostsee. *Zoologischer Anzeiger* 171: 440-447
- 544 Reinhard W (1881) Über *Echinoderes* und *Desmocolex* der Umgegend von Odessa. *Zoologischer Anzeiger*
545 4(97): 558-592
- 546 Sheremetivskij AM (1974) Kinorhynchs of the Black Sea. *Zoologicheskii Zhurnal* 53: 974-987
- 547 Sørensen MV, Pardos F (2008) Kinorhynch systematics and biology an introduction to the study of kinorhynchs,
548 inclusive identification keys to the genera. *Meiofauna Marina* 16:21–73
- 549 Sørensen MV, Pardos F, Herranz M, Rho HS (2010) New Data on the Genus *Paracentrophyes* (Homalorhagida,
550 Kinorhyncha), with the Description of a New Species from the West Pacific. *The Open Zoology Journal*
551 3:42-59
- 552 Southern R (1914) Nematelminia, Kinorhyncha and Chaetognatha. Part 54. In: Clare Island Survey. *Proceedings*
553 *of the Royal Irish Academy* 31: 1-80
- 554 Zaneveld JS (1938) Marine Gatrotricha and Kinorhyncha from Scheveningen. *Zool Meddelingen. Leiden* 20:
555 247-262
- 556 Zelinka C (1928) *Monographie der Echinodera*. Verlag Wilhelm Engelmann, Leipzig

557

558 **Figure Captions**

559 **Fig. 1** Mediterranean and Atlantic sampling localities

560 **Fig. 2** Schematic transverse section across a trunk segment of a homalorhagid kinorhynch, showing positions of
561 cuticular characters. Lines are marked by circles. Bands are limited by dotted lines. Abbreviations: *LD*
562 laterodorsal, *LV* lateroventral, *MD* middorsal, *ML* midlateral, *PD* paradorsal, *PL* paralateral, *PV* paraventral, *SD*
563 subdorsal, *VL* ventrolateral, *VM* ventromedial

564 **Fig. 3** *Pycnophyes dolichurus* sp. nov. **a** Female, ventral view. **b** Female, dorsal view. **c** Male, ventral view of
565 segments 10 and 11. **d** Male, dorsal view of segments 10 and 11. Scale bar: 100 µm. Abbreviations: *esp*
566 episternal plate, *ff* free flap, *lds* laterodorsal seta, *lts* lateroterminal spine, *lvs* lateroventral seta, *me* middorsal
567 elevation, *mp* middorsal process, *ms* muscular scar, *msp* midsternal plate, *mt* anteromesial thickenings of ventral
568 pachycycli (Mittelwülste), *pds* paradorsal seta, *pls* paralateral seta, *ps* penile spine, *pvs* paraventral seta, *sbs*
569 subcuticular structure (atria), *scg* subcuticular gland, *sf* secondary fringe, *ss* sensory spot, *vls* ventrolateral seta

570

Fig. 4 *Pycnophyes dolichurus* sp. nov., SEM photographs. **a** Male, ventral view. **b** Male, dorsal view. **c** Female; detail of segment 7 showing middorsal elevation near posterior segment margin. **d** Male; detail of segment 9 showing middorsal process near posterior segment margin. **e** Male; detail of anterolateral part of tergal plate of segment 1. **f** Male; segments 3-7, ventral view. Abbreviations: *hp* horn-like protrusion, *lvs* lateroventral seta, *me* middorsal elevation, *mp* middorsal process, *pls* paralateral seta, *pvs* paraventral seta, *sf* secondary fringe, *ss* sensory spot, *vls* ventrolateral seta

Fig. 5 *Pycnophyes dolichurus* sp. nov., interference-contrast (DIC) photographs. **a** Paratype, female; head and segments 1-2, ventral view. **b** Paratype, female; segment 1, dorsal view. **c** Paratype, female; segments 2-3, ventral view. **d** Paratype, female; segment 8, dorsal view. **e** Allotype, male; segments 9-11, ventral view. **f** Paratype, female; segments 9-10, dorsal view. Abbreviations: *esp* episternal plate, *ff* free flap, *in* introvert, *lds* laterodorsal seta, *lts* lateroterminal spine, *lvs* lateroventral seta, *mc* mouth cone, *mss* midsternal plate, *mt* anteromesial thickenings of ventral pachycycli (Mittelwülste), *pvs* paraventral seta, *sbs* subcuticular structure (atria), *scg* subcuticular gland, *ss* sensory spot, *vls* ventrolateral seta

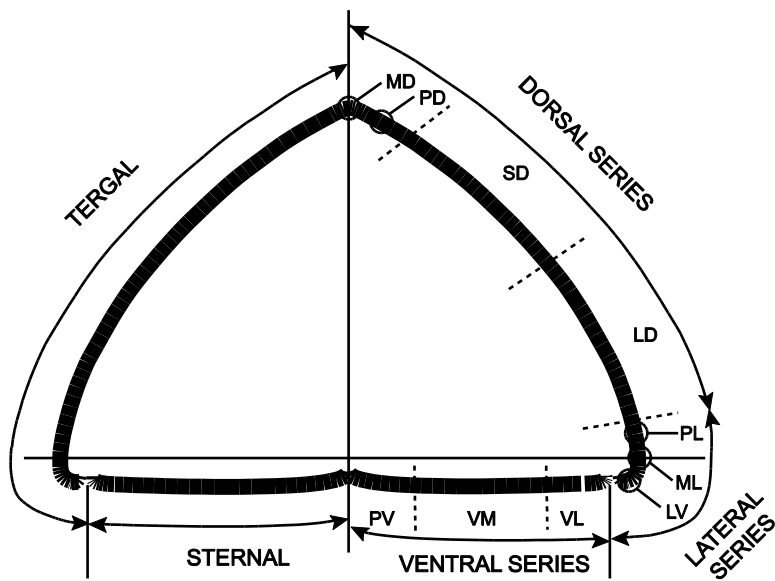
Fig. 6 *Pycnophyes aulacodes* sp. nov. **a** Female, ventral view. **b** Female, dorsal view. **c** Male, ventral view of segments 1 and 2. **d** Male, ventral view of segments 10 and 11. Scale bar: 100 µm. Abbreviations: *at* adhesive tube, *esp* episternal plate, *lds* laterodorsal seta, *lts* lateroterminal spine, *lvs* lateroventral seta, *mds* middorsal seta, *ms* muscular scar, *mss* midsternal plate, *mt* anteromesial thickenings of ventral pachycycli (Mittelwülste), *pds* paradorsal seta, *pls* paralateral seta, *ps* penile spine, *sbs* subcuticular structure (atria), *sf* secondary fringe, *ss* sensory spot, *vls* ventrolateral seta, *vms* ventromedial seta.

Fig. 7 *Pycnophyes aulacodes* sp. nov., SEM photographs. **a** Male, ventral view. **b** Male, dorsal view. **c** Female; detail showing middorsal position on segments 2-3. **d** Male; segment 5, detail of ventromedial position on left sternal plate. **e**, Male; segments 4-7, dorsal view. **f** Male; segment 1-2, ventral view. Abbreviations: *at* adhesive tube, *go* gland opening, *me* middorsal elevation, *pp* pointed projection, *sf* secondary fringe, *ss* sensory spot, *vms* ventromedial seta

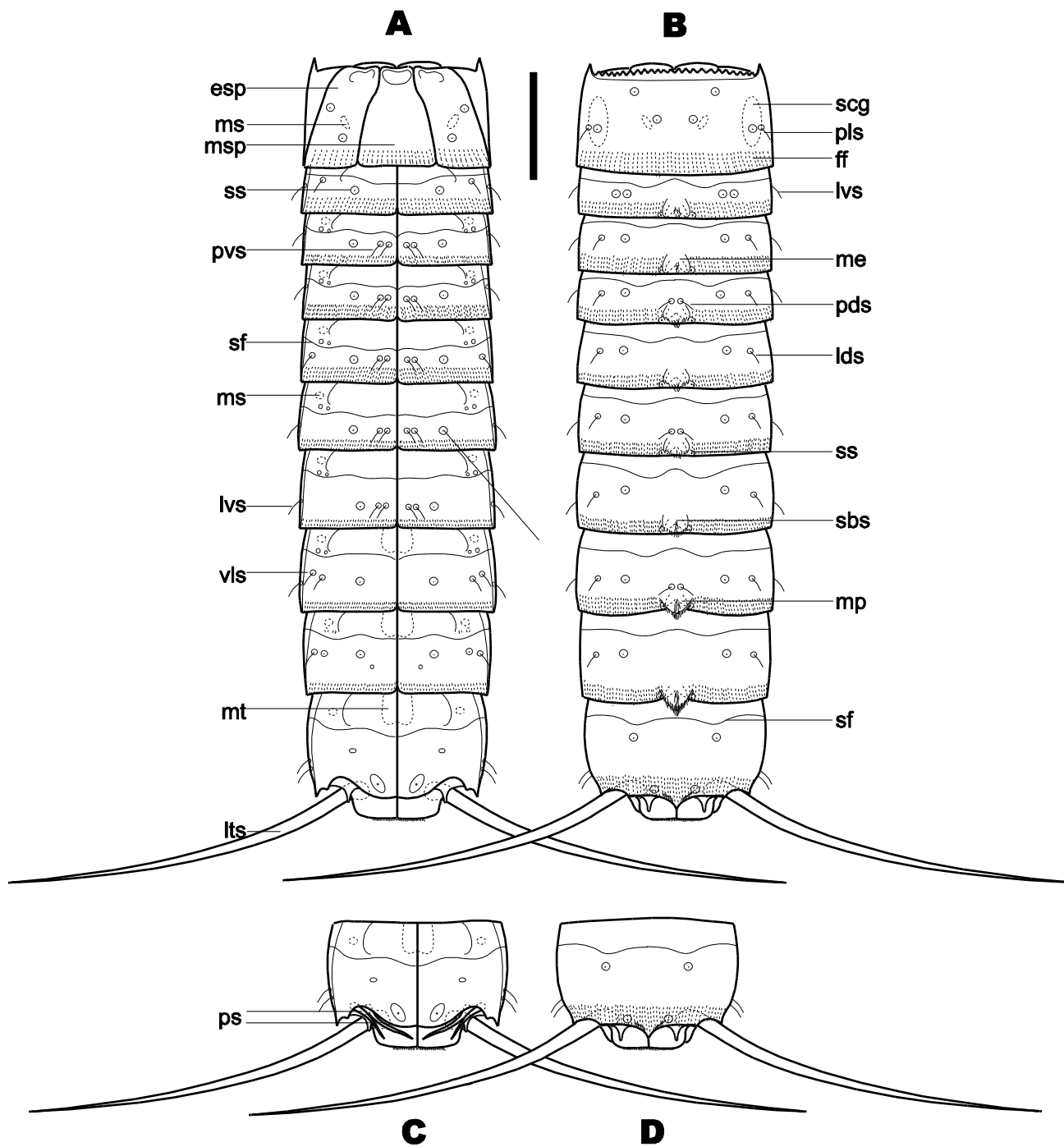
Fig. 8 *Pycnophyes aulacodes*, sp. nov., interference-contrast (DIC) photographs. **a** Allotype, male; segments 1-5, dorsal view. **b** Paratype, male; segments 2-3, ventral view. **c** Paratype, female; segments 1-4, dorsal view. **d** Holotype, female; right sternal plates of segments 7-8, ventral view. **e** Paratype, male; segments 7-11, ventral view. **f** Paratype, male; segments 10-11, ventral view. Abbreviations: *at* adhesive tube, *lts* lateroterminal spine, *lvs* lateroventral seta, *ms* muscular scar, *pp* pointed projection, *ps* penile spine, *sbs* subcuticular structure (atria), *sf* secondary fringe, *vms* ventromedial seta

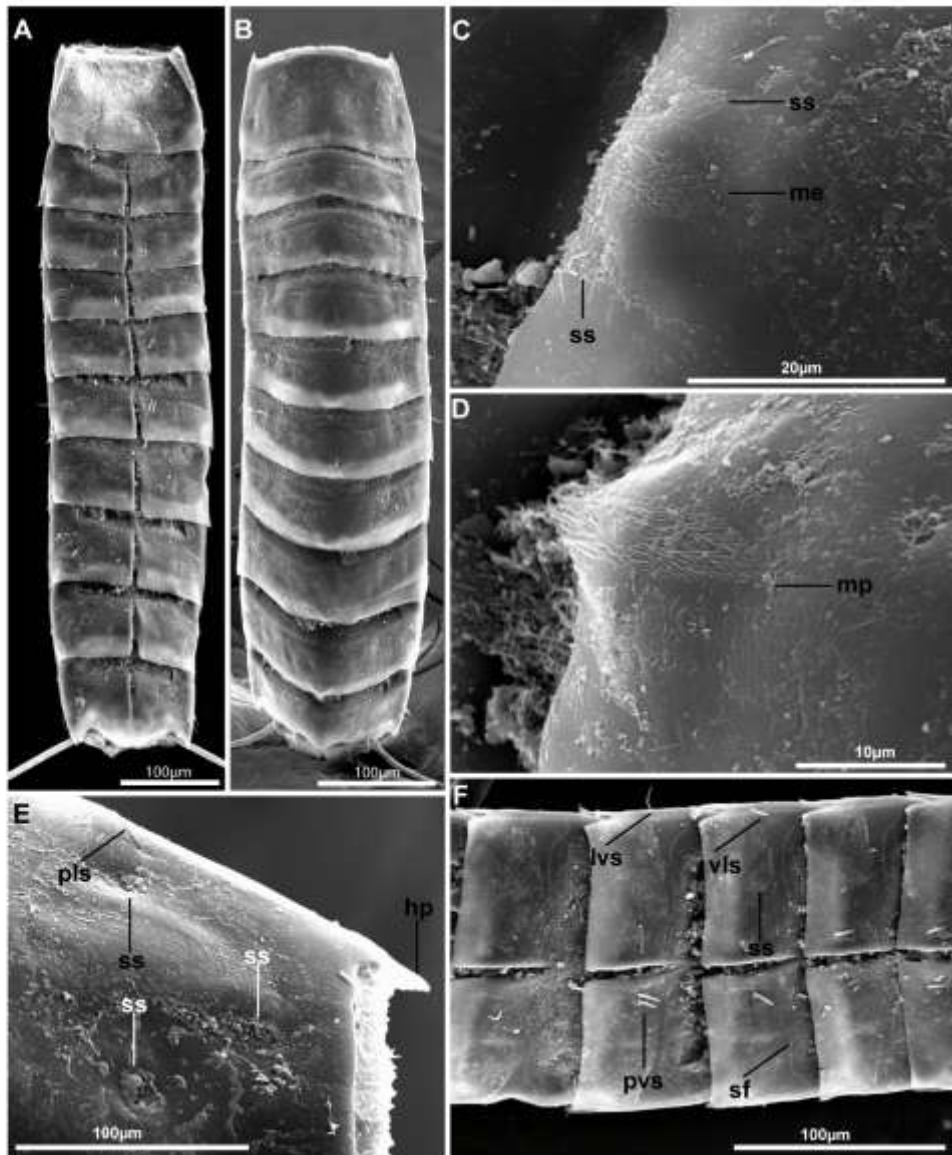


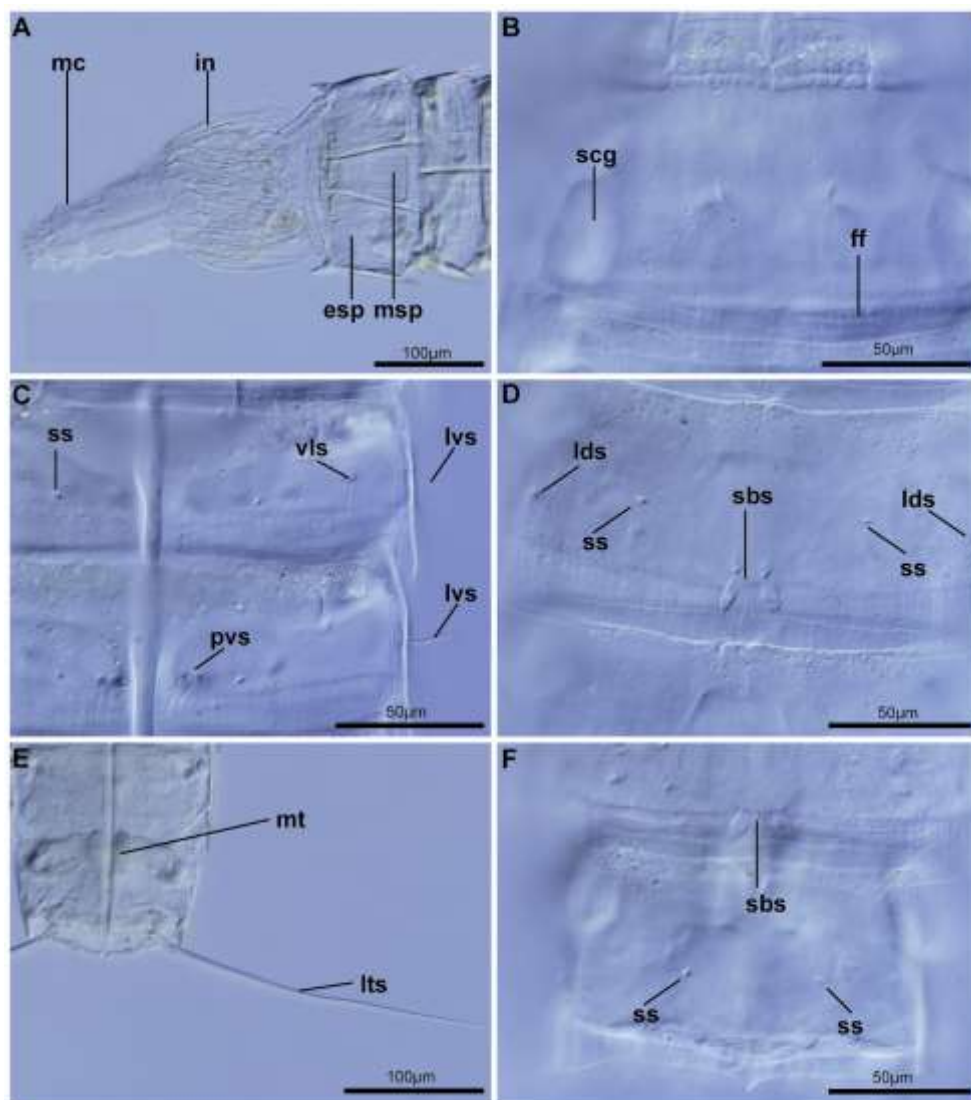
605



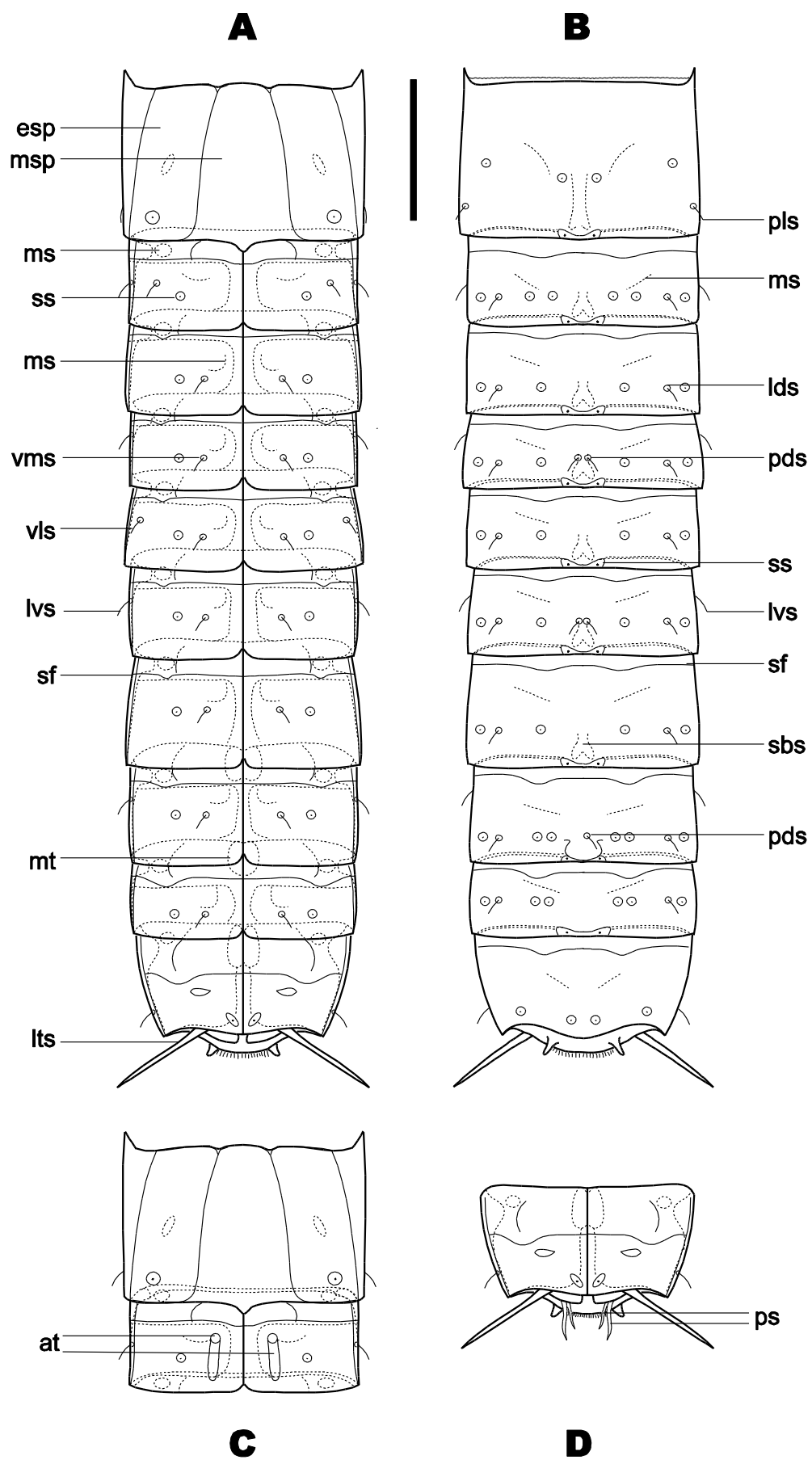
606

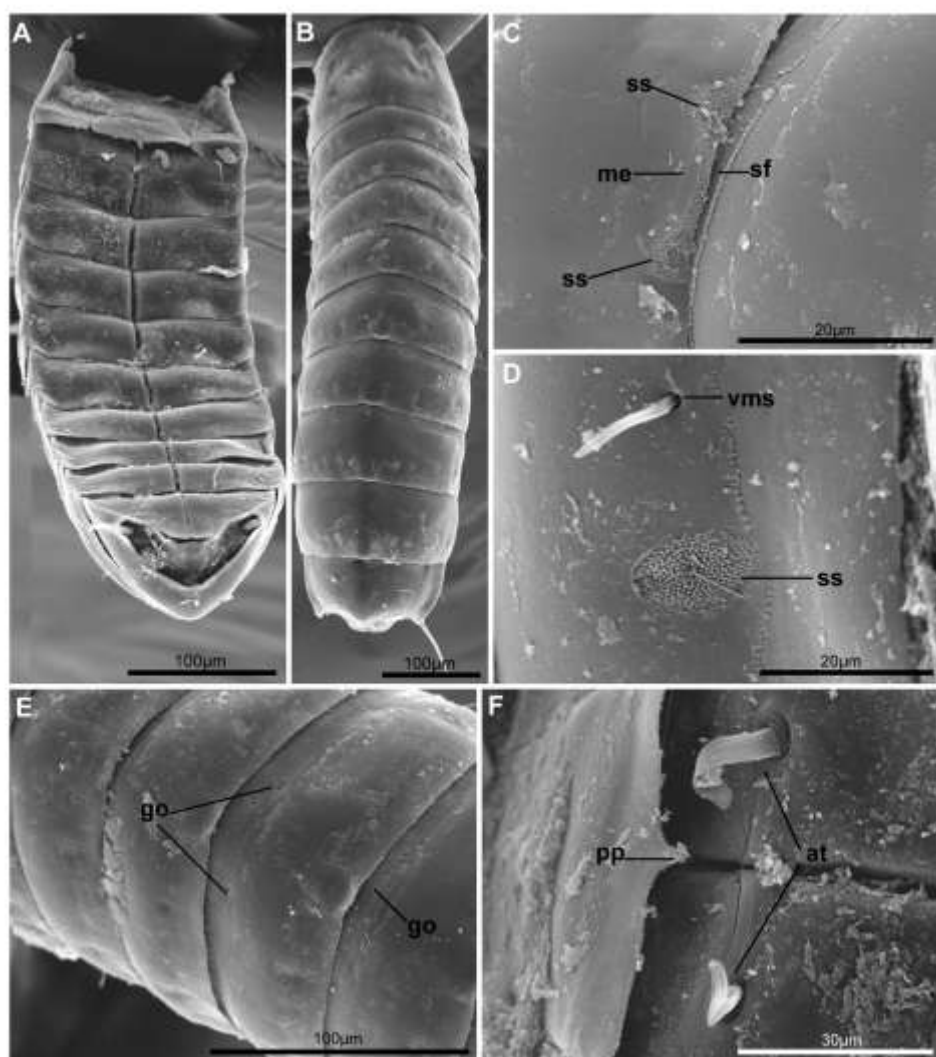






609





611

SPECIES	LOCALITY	REFERENCE
<i>Pycnophyes zelinkaei</i> Southern, 1914	Ireland, Clew Bay UK, Fladden	Southern (1914) McIntyre (1962)
<i>P. calmani</i> (Southern, 1914)	Ireland, Clew Bay UK, St. Andrews Bay Ireland, Irish coast Denmark, Gilleleje Flak (Oresund) Clay Deep, North Sea	Southern (1914) Zelinka (1928) Zelinka (1928) Lang (1936) Huys & Coomans (1989)
<i>P. dentatus</i> (Reinhard, 1881)	Ireland, Clew Bay Germany, Kiel Bay Netherlands, Scheveningen UK, Isle of Man Germany, Helgoland, Sylt (North Sea)	Southern (1914) Zelinka (1928) Zaneveld (1938) Bruce et al. (1963) Neuhaus (1993)
<i>P. communis</i> Zelinka, 1908	Sweden, Gullmar Fjord	Nyholm (1947)
<i>P. flaveolatus</i> Zelinka, 1928	Sweden, Gullmar Fjord Denmark, Gilleleje Flak (Oresund)	Nyholm (1947) Lang (1936)
<i>P. kielensis</i> Zelinka, 1928	Germany, Kiel Bay	Zelinka (1928)



	Denmark, Vedbæk (Oresund)	Lang (1936)	613	Table 1 Atlantic European species of <i>Pycnophyes</i>
	Germany, Greifswalder Bodden	Reimer (1963)	614	
	Germany, Helgoland, Sylt (North Sea)	Neuhaus (1988)	615	
			616	
<i>P. maximus</i> Reimer, 1963	Germany, Kadettrinne	Reimer (1963)	617	

618

619 **Table 2** Mediterranean European species of *Pycnophyes*

SPECIES	LOCALITY	REFERENCE
<i>Pycnophyes communis</i> Zelinka, 1908	Italy, Naples Gulf	Zelinka (1928)
	Italy, Trieste Gulf	Zelinka (1928)
<i>P. robustus</i> Zelinka, 1928	Italy, Naples Gulf	Zelinka (1928)
	Italy, Trieste Gulf	Zelinka (1928)
<i>P. carinatus</i> Zelinka, 1928	Italy, Naples Gulf	Zelinka (1928)
	Italy, Trieste Gulf	Zelinka (1928)
<i>P. flaveolatus</i> Zelinka, 1928	Italy, Naples Gulf	Zelinka (1928)
	Italy, Trieste Gulf	Zelinka (1928)
<i>P. rugosus</i> Zelinka, 1928	Italy, Naples Gulf	Zelinka (1928)
<i>P. ponticus</i> (Reinhard, 1881)	Ukrania, Odessa, Black Sea	Reinhard (1881)
	Italy, Naples Gulf	Zelinka (1928)
	Rumania, Black Sea	Băcescu & Băcescu (1956)
	Bulgaria, Black Sea	Marinov (1964)
	Russia, Black Sea	Sheremetevskij (1974)
<i>P. dentatus</i> (Reinhard, 1881)	Ukrania, Odessa, Black Sea	Reinhard (1881)
	Rumania, Black Sea	Băcescu & Băcescu (1956)
	Russia, Black Sea	Sheremetevskij (1974)
<i>P. kielensis</i> Zelinka, 1928	Ukrania, Odessa, Black Sea	Reinhard (1881)
	Rumania, Black Sea	Băcescu (1968)
	Russia, Black Sea	Sheremetevskij (1974)

620

621 **Table 3** Sampling localities for *Pycnophyes dolichurus* sp. nov. and *P. aulacodes* sp. nov., including number of
622 specimens obtained (*n*), geographic coordinates, type of sediment, depth and type locality(*)

SAMPLE	<i>n P. dolichurus</i>	<i>n P. aulacodes</i>	LOCALITY	COORDINATES	SEDIMENT	DEPTH
970324.1B	0	1	Garrucha	37° 9' 13.97'' N 1° 47' 57.12'' W	coarse sand	-
970325.3B	0	1	Garrucha	37° 10' 55.53'' N 1° 49' 30.3'' W	mud	-
970327.2B	0	6	Denia	38° 50' 14'' N 0° 9' 25'' E	fine sand	-
990324.3B	0	1	Blanes	41° 38.596' N 02° 46.255' E	midfine sand	-
070626.5	0	1	Ría de Ferrol	43° 28.178' N 008° 14.716' W	mud	-

070627.1*	0	15	Ría de Ares	43° 25.064'N 008° 16.558'W	mud	-
070627.3*	13	1	Ría de Ares	43° 24.844'N 008° 17.832'W	coarse sand	-
070627.5	0	2	Ría de Ferrol, San Cristobo	43° 27.887'N 008° 18.118'W	midfine sand muddy	-
080403.3	0	1	Ría Coruña	43° 22.208'N 008° 21.177'W	midfine sand	19m
080403.4	0	1	Ría Coruña	43° 22,718'N 008° 21.858'W	fine sand	27m
080403.6	0	1	Ría Coruña	43° 21.697'N 008° 22.713'W	midfine sand muddy	19,1m
080404.3	21	1	Ría de Ares	43° 25.400'N 008° 20.769'W	fine sand	45,4m
080404.5	0	4	Ría de Ares	43° 23.232'N 008° 15.391'W	fine sand	13m

623

624

625

626

627

628

629

630

631 **Table 4** *Pycnophyes dolichurus* sp. nov. Measurements (µm) for holotype and means of studied specimens,
632 females and males.

Character	Holotype	<i>n</i>	Range	Mean	SD	SD ♀-♂
TL	715	♀10 ♂4	♀649-746 ♂660-769	♀699 ♂707	♀35,87 ♂50,64	39,11
MSW-6	186	♀1	-	-	-	-
SW-10	151	♀1	-	-	-	-
SL1	90	♀10 ♂4	♀84-96 ♂86-93	♀90 ♂90	♀3,10 ♂3,96	3,20
SL2	58	♀10 ♂4	♀49-63 ♂52-60	♀58 ♂57	♀3,68 ♂3,47	3,36
SL3	54	♀10 ♂4	♀54-70 ♂58-63	♀64 ♂60	♀4,19 ♂3,12	3,80
SL4	64	♀10 ♂4	♀59-72 ♂61-66	♀67 ♂64	♀4,81 ♂1,74	3,90
SL5	69	♀10 ♂4	♀65-76 ♂61-68	♀70 ♂65	♀7,83 ♂3,64	7,07
SL6	74	♀10 ♂4	♀68-79 ♂64-74	♀75 ♂68	♀3,98 ♂6,38	4,94

SL7	75	♀10 ♂4	♀75-81 ♂69-80	♀78 ♂74	♀2,00 ♂3,89	3,04
SL8	84	♀10 ♂4	♀81-88 ♂78-87	♀84 ♂82	♀2,64 ♂3,26	2,83
SL9	88	♀10 ♂4	♀81-93 ♂81-94	♀88 ♂87	♀4,13 ♂4,49	3,93
SL10	92	♀10 ♂4	♀89-99 ♂86-99	♀96 ♂93	♀3,59 ♂5,48	3,87
SL11	55	♀10 ♂4	♀38-55 ♂43-50	♀44 ♂47	♀18,29 ♂3,51	15,55
LTS	320	♀10 ♂3	♀286-332 ♂243-317	♀315 ♂288	♀13,82 ♂39,83	23,43
%LTS/TL	45%	♀10 ♂3	♀41%-48% ♂32%-49%	♀45% ♂42%	♀0,02 ♂0,09	0,05

Abbreviations: *LTS*, lateroterminal spine; *MSW-6*, maximum sternal width (on segment 6); *n* number of measured specimens; *SD*, standard deviation; *SL*, segment length; *SW-10*, standard width (on segment 10); *TL*, total length; ♀, female; ♂, male

Table 5 Summary of location of setae and sensory spots in *Pycnophyes dolichurus* sp. nov. arranged by series

Segment	PD	SD	LD	PL	LV	VL	VM	PV
1		ss,ss	ss	se		ss	ss	
2	ss	tss			se	se	ss	
3	ss	ss	se		se		ss	tse
4	se,ss	ss	se		se		ss	tse
5	ss	ss	se			se	ss	tse
6	se,ss	ss	se		se		ss	tse
7	ss	ss	se		se		ss	tse
8	se,ss	ss	se		se	tse	ss	
9	ss	ss	se			se,ss	ss	
10	ss	ss			tse			ss
11					lts	ps(2,m)		

LD laterodorsal, *LV* lateroventral, *PD* paradorsal, *PL* paralateral, *PV* paraventral, *SD* subdorsal, *VL* ventrolateral, *VM* ventromedial. Abbreviations: *m* male condition of sexually dimorphic character, *lts* lateroterminal spine, *ps* penile spine, *se* seta, *ss* sensory spot, *tse* twin of setae, *tss* twin of sensory spots

Table 6 *Pycnophyes aulacodes* sp. nov. Measurements (µm) for holotype and means of studied specimens, females and males

Character	Holotype	<i>n</i>	Range	Mean	SD	SD♀-♂
-----------	----------	----------	-------	------	----	-------

TL	713	♀6 ♂5	♀662-806 ♂727-808	♀736 ♂775	♀53,01 ♂30,70	47,04
MSW-7	171	♀1	-	-	-	-
SW-10	168	♀1	-	-	-	-
SL1	112	♀6 ♂5	♀97-115 ♂107-120	♀109 ♂113	♀6,95 ♂6,52	6,63
SL2	71	♀6 ♂5	♀48-72 ♂66-79	♀65 ♂72	♀8,67 ♂5,22	7,84
SL3	74	♀6 ♂5	♀60-77 ♂70-79	♀70 ♂75	♀5,95 ♂3,93	5,38
SL4	75	♀6 ♂5	♀66-76 ♂66-79	♀73 ♂72	♀3,76 ♂5,93	4,62
SL5	76	♀6 ♂5	♀67-76 ♂68-79	♀74 ♂76	♀3,54 ♂7,10	5,25
SL6	79	♀6 ♂5	♀70-87 ♂75-87	♀79 ♂80	♀5,67 ♂4,64	4,97
SL7	85	♀6 ♂5	♀71-92 ♂76-92	♀82 ♂84	♀7,10 ♂6,72	6,68
SL8	87	♀6 ♂5	♀75-88 ♂83-92	♀83 ♂87	♀4,60 ♂3,36	4,45
SL9	86	♀6 ♂5	♀72-87 ♂84-90	♀83 ♂88	♀5,65 ♂2,58	5,12
SL10	85	♀4 ♂5	♀83-100 ♂88-96	♀91 ♂92	♀7,75 ♂3,41	5,36
SL11	17	♀1 ♂0	- -	♀17 -	- -	-
LTS	74	♀6 ♂3	♀74-93 ♂86-89	♀80 ♂82	♀6,57 ♂10,05	7,28
%LTS/TL	10%	♀6 ♂3	♀10%-12% ♂9%-11%	♀11% ♂10%	♀0,01 ♂0,01	0,01

Abbreviations: *LTS*, lateroterminal spine; *MSW-7*, maximum sternal width (on segment 7); *n* number of measured specimens; *SD*, standard deviation; *SL*, segment length; *SW-10*, standard width (on segment 10); *TL*, total length; ♀, female; ♂, male

Table 7 Summary of location of setae and sensory spots in *Pycnophyes aulacodes* sp. nov.

Segment	PD	SD	LD	PL	LV	VL	VM	PV
1	ss,ss		ss	se		ss		
2	ss	tss	se,ss		se	se(f)	ss,at(m)	
3	ss	ss	se,ss				se,ss	
4	se,ss	ss	se,ss		se		se,ss	
5	ss	ss	se,ss			se	se,ss	
6	se,ss	ss	se,ss		se		se,ss	
7	ss	ss	se,ss				se,ss	
8	se(1),ss	tss	se,ss		se		se,ss	
9	ss	tss	se,ss				se,ss	
10	ss		ss		se			ss

656 *LD* laterodorsal, *LV* lateroventral, *PD* paradorsal, *PL* paralateral, *PV* paraventral, *SD* subdorsal, *VL* ventrolateral,
657 *VM* ventromedial. Abbreviations: *at* adhesive tube, *f* female condition of sexually dimorphic character, *lts*
658 *tateroterminal spine*, *m* male condition of sexually dimorphic character, *se* seta, *ss* sensory spot, *tss* twin of
659 sensory spots, *(1)* only one unpaired cuticular structure
660