



**HAL**  
open science

# The Gyro-Kinetic Approximation: an attempt at explaining the method based on Darboux Algorithm and Lie Transform

Emmanuel Frenod, Mathieu Lutz

► **To cite this version:**

Emmanuel Frenod, Mathieu Lutz. The Gyro-Kinetic Approximation: an attempt at explaining the method based on Darboux Algorithm and Lie Transform. 2011. hal-00638657

**HAL Id: hal-00638657**

**<https://hal.science/hal-00638657>**

Preprint submitted on 6 Nov 2011

**HAL** is a multi-disciplinary open access archive for the deposit and dissemination of scientific research documents, whether they are published or not. The documents may come from teaching and research institutions in France or abroad, or from public or private research centers.

L'archive ouverte pluridisciplinaire **HAL**, est destinée au dépôt et à la diffusion de documents scientifiques de niveau recherche, publiés ou non, émanant des établissements d'enseignement et de recherche français ou étrangers, des laboratoires publics ou privés.

# The Gyro-Kinetic Approximation

## An attempt at explaining the method based on Darboux Algorithm and Lie Transform

Emmanuel Frénod\*      Mathieu Lutz†

*Summer school Fusion - Paris - September 2011*

### Abstract

This Proceeding presents the method that allows us to get the Gyro-Kinetic Approximation of the Dynamical System satisfied by the trajectory of a particle submitted to a Strong Magnetic Field. The goal of the method is to build a change of coordinates in order to make the dynamic of two components of the trajectory to disappear. This change of coordinates is based on a Darboux mathematical Algorithm and on a Lie Transform

## 1 Introduction

**Scientific framework** - At the end of the 70', Littlejohn [11, 12, 13] shed new light on what is called *the Guiding Center Approximation*. His approach was based on mathematical theories - Hamiltonian Mechanics, Differential Geometry, Symplectic Geometry - in order to clarify what has been done for years in the domain (see Kruskal [10], Gardner [4], Northrop [14], Northrop & Rome [15]). His papers claim that it has been for him an enormous effort to reach this goal, since he had to incorporate into a physical affordable theory high level mathematics. Sure, this theory is a nice success. It has been being widely used by physicists to deduce related models (*Finite Larmor Radius Approximation, Drift Kinetic Model, Quasi-Neutral Gyro-kinetic Model, etc.*, see for instance Koseleff [9], Brizard [1], Dubin *et al.* [2], Frieman & Chen [3], Hahm [7], Hahm, Lee & Brizard [8], Parra & Catto [16, 17, 18]) making up the *Gyro-Kinetic Approximation Theory*, which is the basis of all kinetic codes used to simulate Plasma Turbulence emergence and evolution in Tokamak (see for instance Grandgirard *et al.* [5, 6]).

The incorporation of mathematical concepts into a physical theory has been done so nicely that the resulting Gyro-Kinetic Approximation Theory is now very difficult for mathematicians.

---

\*Université Européenne de Bretagne, Lab-STICC (UMR CNRS 3192), Université de Bretagne-Sud, Centre Yves Coppens, Campus de Tohannic, F-56017, Vannes & Projet INRIA Calvi, Université de Strasbourg, IRMA, 7 rue René Descartes, F-67084 Strasbourg Cedex, France.

†Université de Strasbourg, IRMA, 7 rue René Descartes, F-67084 Strasbourg Cedex, France & Projet INRIA Calvi.

This talk (and proceeding) is the first step into the rewriting of the Gyro-Kinetic Approximation Theory into a mathematically affordable theory. It is only a summarize, to understand, with a mathematical slant, several aspects of what is done in the references just cited.

**Charge particles submitted to Strong Magnetic Field -** The context of the Gyro-kinetic Approximation is Tokamak Physics. An artist vision of Iter, which is a Tokamak, is given in Figure 1. The vessel of a Tokamak is the interior of a torus with a vertical axis of symmetry. Along the torus, electromagnets can generate a large magnetic field.

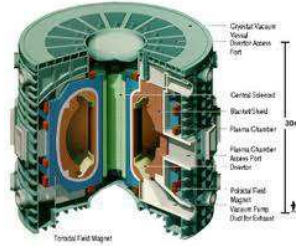


Figure 1: Artist vision of Iter.

We begin by considering a charged particle within the vessel of a Tokamak in service. In Usual Coordinates  $(\mathbf{x}, \mathbf{v}) = (x_1, x_2, x_3, v_1, v_2, v_3)$ , where  $\mathbf{x}$  stands for the position variable and  $\mathbf{v}$  for the velocity variable, the position and the velocity at time  $t$  ( $\mathbf{X}(t; \mathbf{x}, \mathbf{v}, s)$ ,  $\mathbf{V}(t; \mathbf{x}, \mathbf{v}, s)$ ) of the particle which is in  $\mathbf{x}$  with velocity  $\mathbf{v}$  at time  $s$  is the solution to

$$\frac{\partial \mathbf{X}}{\partial t} = \mathbf{V}, \quad (1)$$

$$\frac{\partial \mathbf{V}}{\partial t} = \frac{q}{m} (\mathbf{E}(\mathbf{X}) + \mathbf{V} \times \mathbf{B}(\mathbf{X})). \quad (2)$$

This dynamical system means nothing but that time derivative of the position is the velocity and that time derivative of the velocity, which is the acceleration, is linked with Lorentz force by Newton's law. In this dynamical system magnetic field  $\mathbf{B}$  is composed of a strong applied piece, of a strong self induced piece and of a self induced perturbations. The strong applied piece is generated by the electromagnets and wind around the axis of symmetry of the tokamak. Charged particles winding, with a relatively large velocity, around the axis of symmetry within the vessel generate the indispensable vertical component of the large magnetic field. This is what is called here the strong self induced piece. The part of the self induced magnetic field which is not vertical is called here the self induced perturbations and is, from now, forgotten. Electric field  $\mathbf{E}$  is induced by the particles of the vessel.

Without loss of generality, we can consider that  $\mathbf{E}$  is the opposite of the gradient of an electric potential, and  $\mathbf{B}$  the curl of vector potential, i.e.:

$$\mathbf{E} = -\nabla\Phi, \quad \mathbf{B} = \nabla \times \mathbf{A}. \quad (3)$$

**Helicoidal trajectories - Larmor Radius -** It is well known that the trajectory of a charged particle submitted to a magnetic field is a helix. The helix axis is the magnetic field direction and its radius, which is called in the context of Tokamak

Plasma the Larmor Radius, equals the norm of the projection of the velocity on the plan orthogonal to the magnetic field divided by the particle's mass time the norm of the magnetic field. As illustrated in left picture of Figure 2, because of the mass ratio

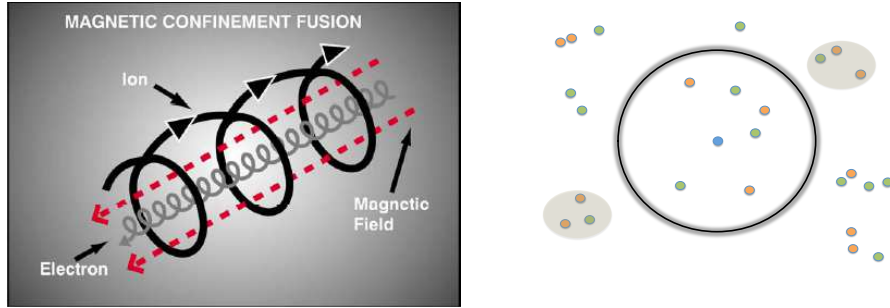


Figure 2: Left: Helicoidal trajectories of ions and electrons submitted to a magnetic field. (Source: S. Jardin's Lectures at Cemracs'10). Right: Screen effect and Debye Length in a plasma.

between ions and electrons, the order of magnitude of electron Larmor Radius is much smaller than that of ions. In Tokamak, those order of magnitude are  $\sim 5 \cdot 10^{-4}m$  for electrons and  $\sim 10^{-2}m$  for ions. Those two lengths are two important scales of Tokamak Plasma Physics.

To simplify the purpose, from now we will forget the scale of electron Larmor Radius and only take ions under consideration.

**Debye Length -** We now explain an important phenomenon of Plasma Physics which is the Screen Effect, with its related length which is the Debye Length.

It is well known that a charged particle generates around it an electric potential which depends on the inverse of the distance to it, say  $\sim 1/r$ . Since this function is the Green Kernel of the opposite to the Laplace operator, when following the Mean Field routine to deduce the model taking under consideration interactions of many particles, it is gotten that the electric field that fills the space is the solution to  $-\Delta\Phi = Cst$  **Charge Density**. Because, of the long range of  $\sim (1/r)$ -potential, the regularization properties of minus Laplacian are such that space variations of the electric potential (and consequently of the electric field) occure at a large scale.

Now, if the density of particles is relatively large, as it happens in Plasma, and if we consider a test particle (which is drawn in blue in right picture of Figure 2), the other particles (in the picture, orange particles are positively charged and green particles negatively charged) which are beyond a given length  $\lambda$ , which is the Debye Length (the black circle in the picture is censed being of radius  $\lambda$ ), may be gathered into subsets (the two grey ellipses in the picture are such subsets) which are such that the resulting action of pairs of those subsets on the test particle is negligible. This has the following consequence: it can be considered that the potential  $\sim 1/r$  generated by a particle may be approximated by a  $\sim e^{-r/\lambda}/r$  potential. Then, following the Mean Field routine with this new assumption leads an electric field that fills the space which is the solution to  $-\mathcal{D}\Phi = Cst$  **Charge Density**. Operator  $-\mathcal{D}$  is the pseudo-differential operator which Green Kernel is  $e^{-r/\lambda}/r$  whose regularization properties are much less than that of minus Laplacian. Then the regularity of the electric field is not as high as we could think before this formal analysis. In particular the electric field can be prone

to variations over lengths ranging from several Debye Lengths to several hundreds of Debye Lengths. Those variations are maybe not extremely large, but as no principle fends them off, they are stable.

**What Ions see -** In a very simplified slant, Electric field in a plasma is a bed with variations which are not so large but not negligible, and, more than anything, stable at scales ranging from several Debye Lengths to several hundreds of Debye Lengths. In

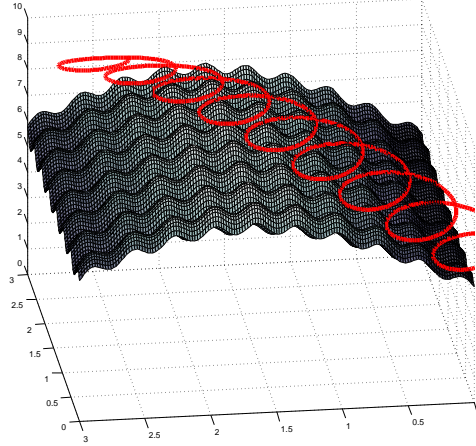


Figure 3: Symbolic picture of oscillating trajectory of ion in a electric field with variations with typical size comparable with trajectory oscillation.

Figure 3 we symbolically represent this bed as a charcoal grey surface. (It is symbolic because a surface is drawn while, in real world, Electric Field fills a 3D space.) This surface shows variations at two scales which are cenced to be about 100 times the Debye Lengths and 1.000 times the Debye Lengths. Those variations are not of large amplitude but are stable. Now, ion motion, symbolically represented in red in the figure, shows an oscillation of amplitude which is about 100 times the Debye Length (ion Larmor Radius  $\sim 10^{-2}m$ , Debye Length :  $\sim 10^{-4}m$ ). Hence, because of the stability of bed variations, its resulting effect can be important on ion trajectory after several periods of oscillation. To take into account this resulting effect, the concept of gyro-average was introduced.

**Dimensionless Dynamical System -** Here, we do not present the scaling routine, we only mention that two small parameters may be introduced. The first one is

$$\varepsilon \sim \frac{\text{Ion Larmor Radius}}{\text{Tokamak size}} \sim \frac{10^{-2}m}{10m} \sim 10^{-3} \quad (4)$$

The second one is  $\eta$  the Debye Length linked variations of the Electric Field and Potential. It is defined as

$$\eta \sim \frac{\text{Characteristic scale of variations of the Electric Field}}{\text{Tokamak size}}. \quad (5)$$

If we follow a scaling routine, we will get that the dimensionless Electric Potential and Field write

$$\Phi(\mathbf{x}) = \Phi_0(\mathbf{x}) + \eta\Phi_1\left(\frac{\mathbf{x}}{\eta}\right) \quad \text{and} \quad \mathbf{E}(\mathbf{x}) = \mathbf{E}_0(\mathbf{x}) + \mathbf{E}_1\left(\frac{\mathbf{x}}{\eta}\right), \quad (6)$$

with

$$\mathbf{E}(\mathbf{x}) = -(\nabla\Phi)(\mathbf{x}), \quad (7)$$

and that the dimensionless Magnetic Field write

$$\frac{\mathbf{B}(\mathbf{x})}{\varepsilon} = (\nabla \times \frac{\mathbf{A}}{\varepsilon})(\mathbf{x}). \quad (8)$$

Then, the dimensionless trajectory, is solution to the following dynamical system:

$$\frac{\partial \mathbf{X}}{\partial t} = \mathbf{V} \quad (9)$$

$$\frac{\partial \mathbf{V}}{\partial t} = \mathbf{E}_0(\mathbf{X}) + \mathbf{E}_1\left(\frac{\mathbf{X}}{\eta}\right) + \mathbf{V} \times \frac{\mathbf{B}(\mathbf{X})}{\varepsilon}. \quad (10)$$

We guess that anybody agree with the fact that this system is a good model to describe motion of charged particle within Tokamak.

**Gyro-kinetic Model** - Yet, there is the Gyro-Kinetic Model. It claims that a trajectory  $(r, \psi, \varphi, W_{\parallel}, J, \Gamma)$  in a coordinates system  $(r, \psi, \varphi, w_{\parallel}, j, \gamma)$  we will discuss on later on, is solution to:

$$\begin{aligned} \frac{\partial r}{\partial t} &= (ED_r + MCD_r), & \frac{\partial \psi}{\partial t} &= \frac{W_{\parallel}}{q(r)R} + \frac{ED_{\psi} + MCD_{\psi}}{r}, \\ \frac{\partial \varphi}{\partial t} &= \frac{W_{\parallel}}{R}, & \frac{\partial W_{\parallel}}{\partial t} &= (E_0 + \langle E_1 \rangle)_{\parallel} - \frac{J}{\varepsilon} \nabla_{\parallel} |\mathbf{B}| + \frac{W_{\parallel}}{|\mathbf{B}|} ED \cdot (\nabla |\mathbf{B}|), \end{aligned} \quad (11)$$

where

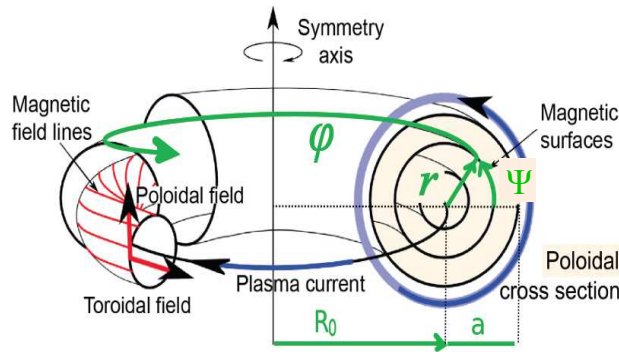


Figure 4: Position coordinates in use in a Tokamak. (Source: V. Grandgirard's Lectures at Cemracs'10).

$$R = R_0 + r \cos(\psi), \quad ED = \varepsilon \frac{\mathbf{B} \times (E_0 + \langle E_1 \rangle)}{|\mathbf{B}|^2}, \quad MCD = \varepsilon \frac{\mathbf{B} \times (\nabla |\mathbf{B}|)}{|\mathbf{B}|^3} (W_{\parallel}^2 + J \frac{|\mathbf{B}|}{\varepsilon}), \quad (12)$$

and

$$\nabla_{\parallel} = \frac{1}{R} \left( \frac{\partial}{\partial \varphi} + \frac{1}{q(r)} \frac{\partial}{\partial \psi} \right). \quad (13)$$

We now explain how to read equations (11) - (13). A Tokamak is the interior of a torus with a vertical symmetry axis. (A Tokamak and its associated position coordinate system  $(r, \psi, \varphi)$  is given in Figure 4.) Hence, it is thought as a small disc carried by a large circle of radius  $R_0$ . Then, for a given point of the Tokamak,  $r$  is (*almost*) its distance from the center of the small disk,  $\psi$  is (*almost*) the angle that the point makes in the small disk and  $\varphi$  is (*almost*) the angle that it makes on the large circle.

In what concerns the velocity variable system  $(w_{\parallel}, j, \gamma)$ , if a moving point is in  $(r, \psi, \varphi)$ , the  $w_{\parallel}$ -component of its velocity stands (*almost*) for the projection of its velocity on the direction the Magnetic Field has in  $(r, \psi, \varphi)$  (which is not far from being tangent to the large circle but which has a small component tangent to the small circle),  $j$  is (*almost*) half the square of the norm of its velocity on the plan orthogonal to the Magnetic Field direction, and  $\gamma$  is (*almost*) the angle that this projection makes in this plan.

Above, precision "*almost*" is essential, and constitutes the core of the Gyro-Kinetic Approximation which consists, as we will see, in building infinitesimal changes of coordinates to set out a dynamical system shaped like (11).

We now comment system (11), forgetting that the variables are only *almost* what they are supposed to be. The first equation in (11) says that the  $r$ -component of a particle trajectory varies with a velocity which is the projection on the direction of the vector joining the center of the small disk and the point of the Electric Drift velocity  $ED$  and the Magnetic Curvature Drift velocity  $MCD$ , both defined in (12). The Electric Drift velocity  $ED$  involves the cross product of the Magnetic Field and what is called the gyro-average of the Electric Field, which is indicated by symbol  $\langle \cdot \rangle$ . The Magnetic Curvature Drift velocity  $MCD$  involves the cross product of the Magnetic Field with the gradient of the Magnetic Field norm.

In the second equation of (11),  $q(r)$  is called the quality factor. Essentially, it is the number of revolutions in the small disk a particle makes while making one revolution along the large circle. Then, term  $W_{\parallel}/(q(r)R)$ , where  $R$  is defined in (12), generates the winding of the particle trajectory in the small disk (this is illustrated by the red curves drawn on the left of the figure). The second term of the second equation of (11) is linked with the action of the Electric Drift velocity and Magnetic Curvature Drift velocity.

The third equation involves the contribution  $W_{\parallel}/R$  of the  $w_{\parallel}$ -component of the particle velocity to the variation of the  $\varphi$ -component of the particle position.

The last equation describes the variation of  $w_{\parallel}$ -component of the particle velocity. It involves, among other terms, the projection of the gyro-average of the Electric Field on the direction of the Magnetic Field and the variation of the Magnetic Field norm in the direction of the Magnetic Field, materialized by operator  $\nabla_{\parallel}$  defined by (13).

In system (11), there is neither equation for  $J$  (the  $j$ -component of the particle velocity) nor for  $\Gamma$  (the  $\gamma$ -component of the particle velocity). This may be considered as a strange fact. The reason why this happens is that the dynamics of  $r, \psi, \varphi, W_{\parallel}$ , the  $r$ -,  $\psi$ -,  $\varphi$ -,  $w_{\parallel}$ -components of the particle trajectory and velocity do not depend on the  $\gamma$ -component of the particle velocity and that its  $j$ -component is invariant. This is summarized as:

$$\frac{\partial J}{\partial t} = 0, \quad \frac{\partial \Gamma}{\partial t} = \text{Does not matter.} \quad (14)$$

**What we explain and what we do not explain** - In this document we give the key ideas that bring the deduction of the Gyro-Kinetic Dynamical System (12) from the original one (9) - (10).

Among thing that we do not tackle, there is the question of the specific position coordinates  $(r, \psi, \varphi)$ . We will remain with a generic position coordinate system. We will not talk about Gyro-average either. The question of the coupling of Gyro-Kinetic Approximation with computation of Electric and Magnetic Fields, using Quasi-Neutral Poisson Equation or Maxwell Equation is also not addressed here.

To end this paragraph we mention that the method only works in case when  $\eta$  is larger than  $\varepsilon$ , or in other words, when  $\eta = \varepsilon^{1-\kappa}$  for  $\kappa > 0$ . This is a important limitation in the theory.

## 2 Methode summarize

**Key result** - The method allowing us to go from system (9) - (10) to a system of the kind of (11), i.e. to make disappear two equations, has nothing to do with magic. It is based on the following result:

**Theorem 2.1.** *If, in a given coordinate system  $\mathbf{r} = (r_1, r_2, r_3, r_4, r_5, r_6)$ , a Hamiltonian Dynamical System writes:*

$$\frac{\partial \mathbf{R}}{\partial t} = \mathcal{P}(\mathbf{R}) \nabla_{\mathbf{r}} H(\mathbf{R}), \quad \mathcal{P}(\mathbf{R}) = \left( \begin{array}{c|cc} \mathcal{M} & 0 & 0 \\ & \vdots & \vdots \\ & 0 & 0 \\ \hline 0 \cdots 0 & 0 & 1 \\ 0 \cdots 0 & -1 & 0 \end{array} \right), \quad (15)$$

(for a trajectory  $\mathbf{R} = (R_1, R_2, R_3, R_4, R_5, R_6)^T$ ) with a Hamiltonian Function that does not depend on the last variable, i.e.

$$\frac{\partial H}{\partial r_6} = 0, \quad (16)$$

Then, submatrix  $\mathcal{M}$  does not depend on the two last variables, i.e.

$$\frac{\partial \mathcal{M}}{\partial r_5} = 0 \text{ and } \frac{\partial \mathcal{M}}{\partial r_6} = 0, \quad (17)$$

and consequently, time-evolution of the four first components  $R_1, R_2, R_3, R_4$  is independent of the last component  $R_6$ ; and, the penultimate component  $R_5$  of the trajectory is not time-evolving, i.e.

$$\frac{\partial R_5}{\partial t} = 0. \quad (18)$$

The proof of property (17) is relatively straightforward by a calculation. Equation (18) is a direct consequence of (16) that yields a sixth component of  $\nabla_{\mathbf{r}} H(\mathbf{R})$  with worth 0 and consequently, because of the form of  $\mathcal{P}(\mathbf{R})$  a fifth line of Dynamical System (15) which is exactly (18).

Essentially, the Gyro-Kinetic version of Dynamical System (9) - (10) exhibit essentially a property like (18) and the property that the four first components of the trajectory are independent of the last component.

As a matter of fact, building the Gyro-Kinetic Approximation consists in building a change of coordinates that bring a system of coordinates in which  $\mathcal{P}(\mathbf{R})$  has the same form as in (15) and in which (16) is true.



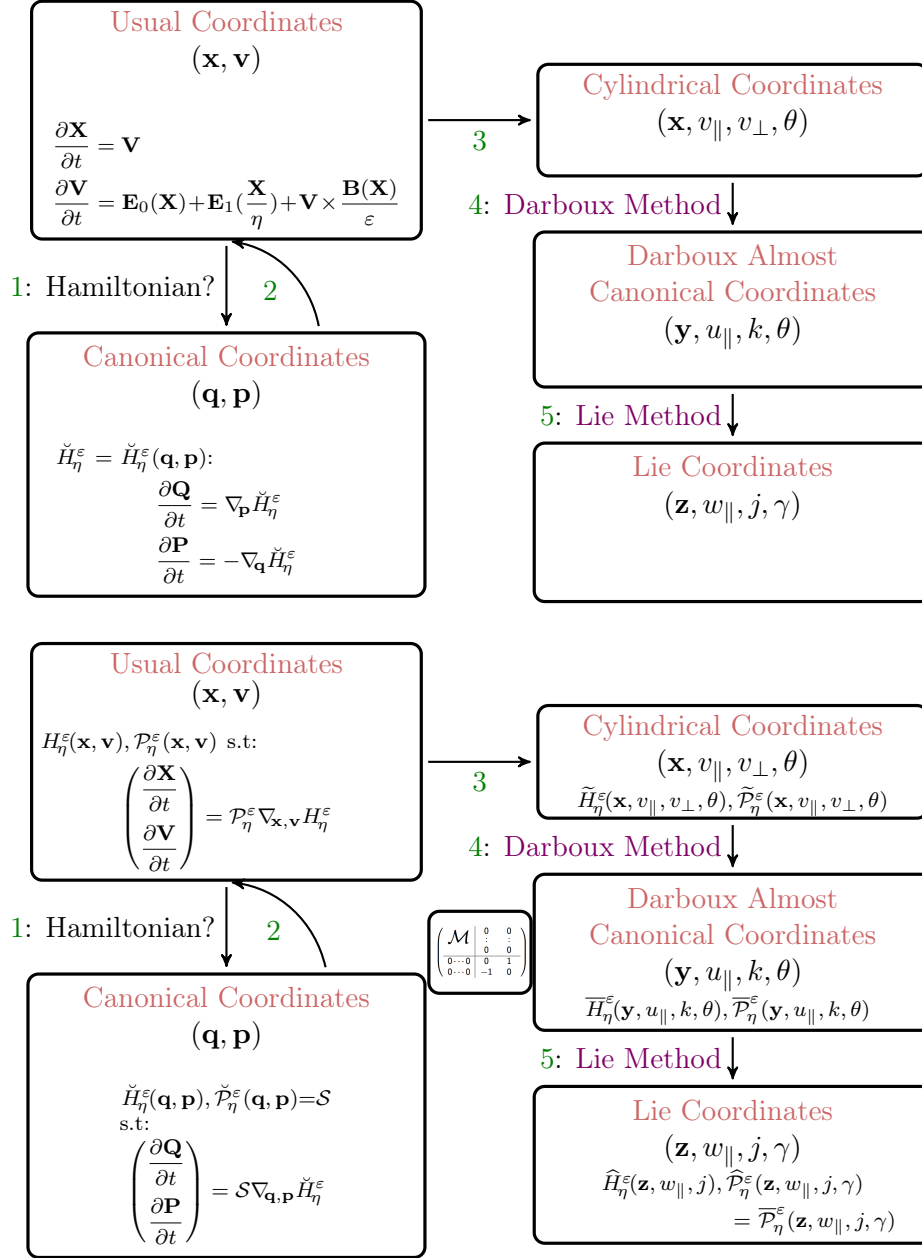


Figure 5: The method is made of 5 steps. 1: Check that the Dynamical System (9)- (10) is well Hamiltonian. 2: Write the system using Hamiltonian Function and Poisson Matrix. 3: Write the system in a cylindrical in velocity coordinate system using the formula giving how the Poisson Matrix and the Hamiltonian Function is transformed by change of coordinates. 4: Make another change of coordinates in order to have the Poisson Matrix form allowing the application of the Key Result (Theorem 2.1). 5: Make a last change of coordinates, leaving the Poisson Matrix form unchanged and leading to a Hamiltonian independent of the last variable.

**Panorama** - As illustrated in Figure 5, the method to build the desired change of coordinates is made of 5 steps. The first one consists in checking that the Dynamical System (9) - (10) is well Hamiltonian. This is symbolized by arrow 1 in the top picture of the Figure. Once this is done, we can go back into the Usual Coordinate System but knowing that the system writes as in the square which is in the top-left of the bottom picture, i.e. involving a Poisson Matrix  $\mathcal{P}_\eta^\varepsilon$  and the gradient  $\nabla_{\mathbf{x},\mathbf{v}}H_\eta^\varepsilon$  of a Hamiltonian Function. It may be written in that form in any Coordinate System, and formula give how to transform the Hamiltonian Function and the Poisson Matrix while changing of Coordinates. The goal of the third step is to introduce a Cylindrical in Velocity Coordinate system which is known has being close to the Gyro-Kinetic Coordinate System. Writing the system in this coordinate system uses the formula giving how the Poisson Matrix and the Hamiltonian Function are transformed by change of coordinates. (At this level, it would be also possible to make a position change of coordinates fitting Tokamak geometry.) In the fourth step, we make another change of coordinates in order to have the Poisson Matrix form allowing the application of the Key Result (Theorem 2.1). In the fifth step, we make a last change of coordinates, leaving the Poisson Matrix form unchanged and leading to a Hamiltonian independent of the last variable.

### 3 Hamiltonian System

We make here the first step: we check that Dynamical System (9) - (10) is Hamiltonian. Essentially, this means nothing but that there exists a coordinate system in which it writes:

$$\frac{\partial \mathbf{Q}}{\partial t} = \nabla_{\mathbf{p}} \check{H}_\eta^\varepsilon, \quad (19)$$

$$\frac{\partial \mathbf{P}}{\partial t} = -\nabla_{\mathbf{q}} \check{H}_\eta^\varepsilon, \quad (20)$$

or

$$\begin{pmatrix} \frac{\partial \mathbf{Q}}{\partial t} \\ \frac{\partial \mathbf{P}}{\partial t} \end{pmatrix} = \mathcal{S} \nabla_{\mathbf{q},\mathbf{p}} \check{H}_\eta^\varepsilon, \quad \text{with } \mathcal{S} = \begin{pmatrix} 0 & I_3 \\ -I_3 & 0 \end{pmatrix}, \quad (21)$$

where  $\check{H}_\eta^\varepsilon$  is a function.

**The Canonical Coordinates** - If we use (7) and (8) in (9) - (10), we get that in the Usual Coordinates  $(\mathbf{x}, \mathbf{v}) = (x_1, x_2, x_3, v_1, v_2, v_3)$ , trajectory :  $(\mathbf{X}(t; \mathbf{x}, \mathbf{v}, s), \mathbf{V}(t; \mathbf{x}, \mathbf{v}, s))$  is solution to

$$\frac{\partial \mathbf{X}}{\partial t} = \mathbf{V}, \quad (22)$$

$$\frac{\partial \mathbf{V}}{\partial t} = -\nabla [\Phi_0(\mathbf{X}) + \eta \Phi_1(\frac{\mathbf{X}}{\eta})] + \mathbf{V} \times \frac{\nabla \times \mathbf{A}(\mathbf{X})}{\varepsilon}. \quad (23)$$

We recall that  $(\mathbf{X}, \mathbf{V}) = (X_1, X_2, X_3, V_1, V_2, V_3)$ .

We will show, in the next paragraph, that in coordinate system  $(\mathbf{q}, \mathbf{p}) = (q_1, q_2, q_3, p_1, p_2, p_3)$  defined by

$$\mathbf{q} = \mathbf{x}, \quad \mathbf{p} = \mathbf{v} + \frac{\mathbf{A}(\mathbf{x})}{\varepsilon}, \quad (24)$$

with reverse transformation given by

$$\mathbf{x} = \mathbf{q}, \quad \mathbf{v} = \mathbf{p} - \frac{\mathbf{A}(\mathbf{q})}{\varepsilon}, \quad (25)$$

the trajectory  $(\mathbf{Q}(t; \mathbf{q}, \mathbf{p}, s), \mathbf{P}(t; \mathbf{q}, \mathbf{p}, s))$  ( $(\mathbf{Q}, \mathbf{P}) = (Q_1, Q_2, Q_3, P_1, P_2, P_3)$ ) which is given by

$$\mathbf{Q} = \mathbf{X}, \quad \mathbf{P} = \mathbf{V} + \frac{\mathbf{A}(\mathbf{X})}{\varepsilon}, \quad \mathbf{X} = \mathbf{Q}, \quad \mathbf{V} = \mathbf{P} - \frac{\mathbf{A}(\mathbf{Q})}{\varepsilon}, \quad (26)$$

is solution of a Dynamical System of the form (19) - (20) or (21), with

$$\check{H}_\eta^\varepsilon(\mathbf{q}, \mathbf{p}) = \frac{1}{2} \left| \mathbf{p} - \frac{\mathbf{A}(\mathbf{q})}{\varepsilon} \right|^2 + \Phi_0(\mathbf{q}) + \eta \Phi_1\left(\frac{\mathbf{q}}{\eta}\right). \quad (27)$$

Those  $(\mathbf{q}, \mathbf{p})$  coordinates will be called Canonical Coordinates.

**Check of Canonical nature of Canonical Coordinates** - Making calculations suggested by (19) - (20) with  $\check{H}_\eta^\varepsilon$  given by (27) gives

$$\frac{\partial \mathbf{Q}}{\partial t} = \nabla_{\mathbf{p}} \check{H}_\eta^\varepsilon(\mathbf{Q}, \mathbf{P}) = \mathbf{P} - \frac{\mathbf{A}(\mathbf{Q})}{\varepsilon}, \quad (28)$$

$$\frac{\partial \mathbf{P}}{\partial t} = -\nabla_{\mathbf{q}} \check{H}_\eta^\varepsilon(\mathbf{Q}, \mathbf{P}) = \frac{(\nabla \mathbf{A}(\mathbf{Q}))^T}{\varepsilon} \left( \mathbf{P} - \frac{\mathbf{A}(\mathbf{Q})}{\varepsilon} \right) - \nabla [\Phi_0(\mathbf{Q}) + \eta \Phi_1\left(\frac{\mathbf{Q}}{\eta}\right)], \quad (29)$$

which applying the following formula

$$(\nabla \mathbf{A})^T (\mathbf{p} - \mathbf{A}) = (\nabla \mathbf{A})(\mathbf{p} - \mathbf{A}) + (\mathbf{p} - \mathbf{A}) \times (\nabla \times \mathbf{A}), \quad (30)$$

yields

$$\frac{\partial \mathbf{Q}}{\partial t} = \mathbf{P} - \frac{\mathbf{A}(\mathbf{Q})}{\varepsilon}, \quad (31)$$

$$\frac{\partial \mathbf{P}}{\partial t} - \frac{(\nabla \mathbf{A}(\mathbf{Q}))}{\varepsilon} \left( \mathbf{P} - \frac{\mathbf{A}(\mathbf{Q})}{\varepsilon} \right) = \left( \mathbf{P} - \frac{\mathbf{A}(\mathbf{Q})}{\varepsilon} \right) \times \frac{\nabla \times \mathbf{A}(\mathbf{Q})}{\varepsilon} - \nabla [\Phi_0(\mathbf{Q}) + \eta \Phi_1\left(\frac{\mathbf{Q}}{\eta}\right)]. \quad (32)$$

Now, using (26) we get

$$\frac{\partial \mathbf{X}}{\partial t} = \mathbf{V}, \quad (33)$$

$$\begin{aligned} \frac{\partial \mathbf{P}}{\partial t} - \frac{(\nabla \mathbf{A}(\mathbf{Q}))}{\varepsilon} \left( \frac{\partial \mathbf{Q}}{\partial t} \right) &= \frac{\partial \left[ \mathbf{P} - \frac{\mathbf{A}(\mathbf{Q})}{\varepsilon} \right]}{\partial t} = \\ \frac{\partial \mathbf{V}}{\partial t} &= \left( \mathbf{P} - \frac{\mathbf{A}(\mathbf{Q})}{\varepsilon} \right) \times \frac{\nabla \times \mathbf{A}(\mathbf{Q})}{\varepsilon} - \nabla [\Phi_0(\mathbf{Q}) + \eta \Phi_1\left(\frac{\mathbf{Q}}{\eta}\right)] \\ &= \mathbf{V} \times \frac{\nabla \times \mathbf{A}(\mathbf{X})}{\varepsilon} - \nabla [\Phi_0(\mathbf{X}) + \eta \Phi_1\left(\frac{\mathbf{X}}{\eta}\right)]. \end{aligned} \quad (34)$$

which is (22) - (23), and then proving the equivalence between the two systems and leads to the conclusion that the Dynamical System we take interest in is Hamiltonian.

**As by-products : Poisson Matrix, Poisson Bracket, Change of Coordinates Formula** - To end the first step we now list some properties we can moreover deduce from the fact that Dynamical System (9) - (10) is Hamiltonian.

In any coordinate system  $\mathbf{r} = (r_1, r_2, r_3, r_4, r_5, r_6)$ , the Dynamical System writes:

$$\frac{\partial \mathbf{R}}{\partial t} = \mathcal{P}(\mathbf{R}) \nabla_{\mathbf{r}} H(\mathbf{R}), \quad (35)$$

for a Poisson Matrix  $\mathcal{P}$ , which is antisymmetric, and a Hamiltonian Function  $H$ .

We can consider the Poisson Bracket which is defined for two regular functions  $f$  and  $g : \mathbb{R}^6 \rightarrow \mathbb{R}$  by

$$\{f, g\}(\mathbf{r}) = (\nabla_{\mathbf{r}} f(\mathbf{r})) \cdot (\mathcal{P}(\mathbf{r})(\nabla_{\mathbf{r}} g(\mathbf{r}))). \quad (36)$$

If one of the two function is vector-valued, i.e. if for instance  $\mathbf{f} : \mathbb{R}^6 \rightarrow \mathbb{R}^6$  and  $g : \mathbb{R}^6 \rightarrow \mathbb{R}$ , then it is defined, for any component  $i = 1, \dots, 6$ , by

$$(\{\mathbf{f}, g\}(\mathbf{r}))_i = (\nabla_{\mathbf{r}} \mathbf{f}_i(\mathbf{r})) \cdot (\mathcal{P}(\mathbf{r})(\nabla_{\mathbf{r}} g(\mathbf{r}))). \quad (37)$$

Then, if we introduce the Coordinate Function  $\mathbf{I}$ , defined by  $\mathbf{I}(\mathbf{r}) = \mathbf{r}$ , then (35) reads also:

$$\frac{\partial \mathbf{R}}{\partial t} = \{\mathbf{I}, H\}(\mathbf{R}). \quad (38)$$

**Remark 3.1.** *In papers of physicists, formula (38) is generally read  $\frac{\partial \mathbf{r}}{\partial t} = \{\mathbf{r}, H\}$ .*

In another coordinate system  $\tilde{\mathbf{r}} = (\tilde{r}_1, \tilde{r}_2, \tilde{r}_3, \tilde{r}_4, \tilde{r}_5, \tilde{r}_6)$  which is tied with the first one by change-of-coordinates formula  $\tilde{\mathbf{r}} = \boldsymbol{\rho}(\mathbf{r})$  and  $\mathbf{r} = \tilde{\boldsymbol{\rho}}(\tilde{\mathbf{r}}) = \boldsymbol{\rho}^{-1}(\tilde{\mathbf{r}})$ , the system writes

$$\frac{\partial \tilde{\mathbf{R}}}{\partial t} = \tilde{\mathcal{P}}(\tilde{\mathbf{R}}) \nabla_{\tilde{\mathbf{r}}} \tilde{H}(\tilde{\mathbf{R}}), \quad (39)$$

where  $\tilde{\mathbf{R}} = \boldsymbol{\rho}(\mathbf{R})$ , with Hamiltonian Function and Poisson Matrix given by

$$\tilde{H}(\tilde{\mathbf{r}}) = H(\tilde{\boldsymbol{\rho}}(\tilde{\mathbf{r}})) \quad \text{and} \quad (\tilde{\mathcal{P}}(\tilde{\mathbf{r}}))_{ij} = \{\boldsymbol{\rho}_i, \boldsymbol{\rho}_j\}(\tilde{\boldsymbol{\rho}}(\tilde{\mathbf{r}})). \quad (40)$$

**Remark 3.2.** *From (27) and applying (40), in Usual Coordinates, Hamiltonian Function expression is*

$$H_{\eta}^{\varepsilon}(\mathbf{x}, \mathbf{v}) = \frac{1}{2} |\mathbf{v}|^2 + \Phi_0(\mathbf{x}) + \eta \Phi_1\left(\frac{\mathbf{x}}{\eta}\right), \quad (41)$$

leading to

$$\nabla_{\mathbf{x}, \mathbf{v}} H_{\eta}^{\varepsilon} = \left( \begin{array}{c} \nabla [\Phi_0(\mathbf{x}) + \eta \Phi_1(\frac{\mathbf{x}}{\eta})] \\ \mathbf{v} \end{array} \right), \quad (42)$$

and Poisson Matrix expression is

$$\mathcal{P}_{\eta}^{\varepsilon}(\mathbf{x}, \mathbf{v}) = \left( \begin{array}{cc} 0 & I_3 \\ -I_3 & \frac{(\nabla A(\mathbf{x}))^T - (\nabla A(\mathbf{x}))}{\varepsilon} \end{array} \right). \quad (43)$$

This can be easily checked calculating

$$\mathcal{P}_\eta^\varepsilon(\mathbf{x}, \mathbf{v}) \nabla_{\mathbf{x}, \mathbf{v}} H_\eta^\varepsilon = \left( -\nabla[\Phi_0(\mathbf{x}) + \eta\Phi_1(\frac{\mathbf{x}}{\eta})] + \frac{\mathbf{v}}{\varepsilon} \frac{(\nabla A(\mathbf{x}))^T - (\nabla A(\mathbf{x}))}{\varepsilon} \mathbf{v} \right), \quad (44)$$

using (29), and comparing with (22) - (23).

Expression (41) is consistent with (40), let us check that it is the same for (43). To do this, let us write the change of coordinates in the following way:  $(\mathbf{x}, \mathbf{v}) = \mathbf{v}(\mathbf{q}, \mathbf{p})$  and  $(\mathbf{q}, \mathbf{p}) = \boldsymbol{\pi}(\mathbf{x}, \mathbf{v})$ . Then, for instance:  $\mathbf{v}_5(\mathbf{q}, \mathbf{p}) = p_2 - \frac{\mathbf{A}_2(\mathbf{q})}{\varepsilon}$ ,  $\mathbf{v}_6(\mathbf{q}, \mathbf{p}) = p_3 - \frac{\mathbf{A}_3(\mathbf{q})}{\varepsilon}$  and

$$\nabla \mathbf{v}_5(\mathbf{q}, \mathbf{p}) = \begin{pmatrix} \frac{1}{\varepsilon} \frac{\partial \mathbf{A}_2}{\partial q_1}(\mathbf{q}) \\ \frac{1}{\varepsilon} \frac{\partial \mathbf{A}_2}{\partial q_2}(\mathbf{q}) \\ \frac{1}{\varepsilon} \frac{\partial \mathbf{A}_2}{\partial q_3}(\mathbf{q}) \\ 0 \\ 1 \\ 0 \end{pmatrix}, \quad S = \begin{pmatrix} 0 & I_3 \\ -I_3 & 0 \end{pmatrix}, \quad \nabla \mathbf{v}_6(\mathbf{q}, \mathbf{p}) = \begin{pmatrix} \frac{1}{\varepsilon} \frac{\partial \mathbf{A}_3}{\partial q_1}(\mathbf{q}) \\ \frac{1}{\varepsilon} \frac{\partial \mathbf{A}_3}{\partial q_2}(\mathbf{q}) \\ \frac{1}{\varepsilon} \frac{\partial \mathbf{A}_3}{\partial q_3}(\mathbf{q}) \\ 0 \\ 0 \\ 1 \end{pmatrix}. \quad (45)$$

Hence, since  $\{\mathbf{v}_5, \mathbf{v}_6\} = (\nabla \mathbf{v}_5) \cdot (S \nabla \mathbf{v}_6)$ , expression of  $(\mathcal{P}_\eta^\varepsilon)_{56}$ , obtained applying (40), is

$$\{\mathbf{v}_5, \mathbf{v}_6\}(\boldsymbol{\pi}(\mathbf{x}, \mathbf{v})) = \frac{1}{\varepsilon} \left( \frac{\partial \mathbf{A}_3}{\partial q_2}(\mathbf{x}) - \frac{\partial \mathbf{A}_2}{\partial q_3}(\mathbf{x}) \right), \quad (46)$$

which is also the expression of  $(\mathcal{P}_\eta^\varepsilon)_{56}$  obtained applying (43). (This may of course be led for the other entries of the matrix also.)

## 4 Cylindrical Coordinates

**Cylindrical Coordinates in velocity** - We now turn to the second step which consists in setting the expression of Dynamical System (22) - (23) (or (9) - (10) or (19), (20), (27)) in a Cylindrical in velocity Coordinate System  $(\mathbf{x}, v_\parallel, v_\perp, \theta)$  which is such that

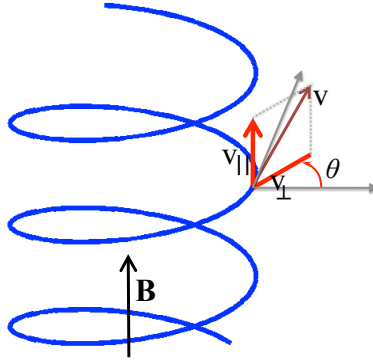


Figure 6: Helicoidal trajectory and Cylindrical Coordinates for the velocity variable.

$$v_{\parallel} = \mathbf{v} \cdot \frac{\mathbf{B}}{|\mathbf{B}|}, \quad v_{\perp} = \left| \mathbf{v} - \left( \mathbf{v} \cdot \frac{\mathbf{B}}{|\mathbf{B}|} \right) \frac{\mathbf{B}}{|\mathbf{B}|} \right|, \quad \theta \text{ s.t. } \mathbf{v} - \left( \mathbf{v} \cdot \frac{\mathbf{B}}{|\mathbf{B}|} \right) \frac{\mathbf{B}}{|\mathbf{B}|} = v_{\perp} (\cos \theta, \sin \theta). \quad (47)$$

This means, as shown in Figure 6 where a helicoidal trajectory induced by a Magnetic Field pointing upward, that  $v_{\parallel}$  is the projection of the velocity on the direction of the Magnetic Field,  $v_{\perp}$  is the norm of the projection of the velocity on the plan orthogonal to the Magnetic Field and  $\theta$  is the angle that this projection makes in this plan.

### Hamiltonian Function and Poisson Matrix in Cylindrical Coordinates -

Applying formula (41), we get the expression of the Hamiltonian Function in this System:

$$\tilde{H}_{\eta}^{\varepsilon}(\mathbf{x}, v_{\parallel}, v_{\perp}, \theta) = \frac{1}{2}(v_{\parallel}^2 + v_{\perp}^2) + \Phi_0(\mathbf{x}) + \eta \Phi_1\left(\frac{\mathbf{x}}{\eta}\right). \quad (48)$$

We can also get the expression of the Poisson Matrix, which is heavy, applying formula (41).

Here, we give its expression in the case when

$$\mathbf{B}(\mathbf{x}) = \begin{pmatrix} b(\mathbf{x}) \\ 0 \\ 0 \end{pmatrix}, \quad b > 0, \quad (49)$$

only. It is:

$$\tilde{\mathcal{P}}_{\eta}^{\varepsilon}(\mathbf{x}, v_{\parallel}, v_{\perp}, \theta) = \begin{pmatrix} 0 & 0 & 0 & \frac{b(\mathbf{x})}{\varepsilon} & 0 & 0 \\ 0 & 0 & 0 & 0 & -\sin(\theta) & -\frac{\cos(\theta)}{v_{\perp}} \\ 0 & 0 & 0 & 0 & -\cos(\theta) & \frac{\sin(\theta)}{v_{\perp}} \\ -\frac{b(\mathbf{x})}{\varepsilon} & 0 & 0 & 0 & \$\$ & \$ \\ 0 & \sin(\theta) & \cos(\theta) & -\$\$ & 0 & -\frac{b(\mathbf{x})}{\varepsilon v_{\perp}} \\ 0 & \frac{\cos(\theta)}{v_{\perp}} & -\frac{\sin(\theta)}{v_{\perp}} & -\$ & \frac{b(\mathbf{x})}{\varepsilon v_{\perp}} & 0 \end{pmatrix}, \quad (50)$$

where

$$\$ = \frac{v_{\parallel}}{\varepsilon} \left( \frac{\partial b}{\partial x_2}(\mathbf{x}) + \frac{\partial b}{\partial x_3}(\mathbf{x}) \right) \quad \text{and} \quad \$\$ = \frac{v_{\parallel}}{\varepsilon v_{\perp}} (\sin(\theta) \frac{\partial b}{\partial x_2}(\mathbf{x}) + \frac{1 + \sin^2(\theta)}{\cos(\theta)} \frac{\partial b}{\partial x_3}(\mathbf{x})). \quad (51)$$

In more general cases, we do not give the Poisson Matrix expression. Yet we mention a very important fact which is that

$$(\tilde{\mathcal{P}}_{\eta}^{\varepsilon}(\mathbf{x}, v_{\parallel}, v_{\perp}, \theta))_{56} = (\tilde{\mathcal{P}}_{\eta}^{\varepsilon}(\mathbf{x}, v_{\parallel}, v_{\perp}, \theta))_{v_{\perp}\theta} = \frac{|\mathbf{B}(\mathbf{x})|}{\varepsilon v_{\perp}} > 0, \quad (52)$$

is always true. This is Important for the Darboux Method which will be reached in a few lines. We will denote:

$$\frac{|\mathbf{B}(\mathbf{x})|}{\varepsilon v_{\perp}} = \omega(\mathbf{x}, v_{\perp}). \quad (53)$$

## 5 Darboux Algorithm

**Darboux Algorithm Target** - The third step is the application of a mathematical algorithm, so called the Darboux Algorithm, to build a Coordinate System  $(\mathbf{y}, u_{\parallel}, k, \theta)$  in which the Poisson Matrix has the required form, given by (15), to apply the Key Result. In fact, in order to manage the small parameter  $\varepsilon$ , we will build the Coordinate System  $(\mathbf{y}, u_{\parallel}, k, \theta)$  in order to get  $\bar{\mathcal{P}}_{\eta}^{\varepsilon}$  with the following form:

$$\left( \begin{array}{c|cc} \mathcal{M} & 0 & 0 \\ & \vdots & \vdots \\ & 0 & 0 \\ \hline 0 \dots 0 & 0 & \frac{1}{\varepsilon} \\ 0 \dots 0 & -\frac{1}{\varepsilon} & 0 \end{array} \right). \quad (54)$$

We introduce the following notations to manage change-of-coordinates mappings:  $(\mathbf{y}, u_{\parallel}, k, \theta) = \mathbf{\Upsilon}(\mathbf{x}, v_{\parallel}, v_{\perp}, \theta)$  and  $(\mathbf{x}, v_{\parallel}, v_{\perp}, \theta) = \boldsymbol{\xi}(\mathbf{y}, u_{\parallel}, k, \theta)$ , ( $\boldsymbol{\xi} = \mathbf{\Upsilon}^{-1}$ ).

An important and constitutive fact in the Darboux Algorithm is that the  $\theta$ -variable is left unchanged.

Now, Since

$$(\bar{\mathcal{P}}_{\eta}^{\varepsilon}(\mathbf{y}, v_{\parallel}, k, \theta))_{ij} = \{\Upsilon_i, \Upsilon_j\}(\boldsymbol{\xi}(\mathbf{y}, v_{\parallel}, k, \theta)), \{\Upsilon_i, \Upsilon_j\} = (\nabla \Upsilon_i) \cdot (\tilde{\mathcal{P}}^{\varepsilon}(\nabla \Upsilon_j)), \quad (55)$$

the bottom-right of form given in (54), results from:

$$\{\Upsilon_6, \Upsilon_5\} = -\frac{1}{\varepsilon}. \quad (56)$$

**Remark 5.1.** If we write  $\Upsilon_6 = \Upsilon_{\theta}$  and  $\Upsilon_5 = \Upsilon_k$ , (56) may be also read  $\{\Upsilon_{\theta}, \Upsilon_k\} = -\frac{1}{\varepsilon}$ . In articles of physicists, this last equation reads  $\{\theta, k\} = -\frac{1}{\varepsilon}$ .

In the same way, the fact that the two last lines (or columns) contain only zeros results from:

$$\begin{aligned} \{\Upsilon_1, \Upsilon_5\} &= 0, & \{\Upsilon_1, \Upsilon_6\} &= 0, \\ \{\Upsilon_2, \Upsilon_5\} &= 0, & \{\Upsilon_2, \Upsilon_6\} &= 0, \\ \{\Upsilon_3, \Upsilon_5\} &= 0, & \{\Upsilon_3, \Upsilon_6\} &= 0, \\ \{\Upsilon_4, \Upsilon_5\} &= 0, & \{\Upsilon_4, \Upsilon_6\} &= 0. \end{aligned} \quad (57)$$

**Remark 5.2.** Using the same conventions as in Remark 5.1, (57) may also read

$$\begin{aligned} \{\Upsilon_{y_1}, \Upsilon_k\} &= 0, \text{ or } \{y_1, k\} = 0, & \{\Upsilon_{y_1}, \Upsilon_{\theta}\} &= 0, \text{ or } \{y_1, \theta\} = 0, \\ \{\Upsilon_{y_2}, \Upsilon_k\} &= 0, \text{ or } \{y_2, k\} = 0, & \{\Upsilon_{y_2}, \Upsilon_{\theta}\} &= 0, \text{ or } \{y_2, \theta\} = 0, \\ \{\Upsilon_{y_3}, \Upsilon_k\} &= 0, \text{ or } \{y_3, k\} = 0, & \{\Upsilon_{y_3}, \Upsilon_{\theta}\} &= 0, \text{ or } \{y_3, \theta\} = 0, \\ \{\Upsilon_{y_4}, \Upsilon_k\} &= 0, \text{ or } \{v_{\parallel}, k\} = 0, & \{\Upsilon_{v_{\parallel}}, \Upsilon_{\theta}\} &= 0, \text{ or } \{v_{\parallel}, \theta\} = 0. \end{aligned} \quad (58)$$

Equations (56) and (57) are hyperbolic PDEs that need to be solve to get change-of-coordinates mapping  $\mathbf{\Upsilon}$ .

**First equation processing** - Since (and this is a consequence of the fact that the  $\theta$ -variable is left unchanged in the sought change-of-coordinates)

$$\nabla \Upsilon_6 (= \nabla \Upsilon_{\theta}) = (0, 0, 0, 0, 0, 1)^T, \quad (59)$$

we deduce  $\{\Upsilon_6, \Upsilon_5\} = (\nabla \Upsilon_6) \cdot (\tilde{\mathcal{P}}^\varepsilon(\nabla \Upsilon_5))$  is the last component of  $(\tilde{\mathcal{P}}^\varepsilon(\nabla \Upsilon_5))$ . Hence, equation (57) reads

$$F_1 \frac{\partial \Upsilon_5}{\partial x_1} + F_2 \frac{\partial \Upsilon_5}{\partial x_2} + F_3 \frac{\partial \Upsilon_5}{\partial x_3} + F_{\parallel} \frac{\partial \Upsilon_5}{\partial v_{\parallel}} + \omega \frac{\partial \Upsilon_5}{\partial v_{\perp}} = -\frac{1}{\varepsilon}, \quad (60)$$

where  $F_n$  and  $\omega$  are functions of  $(\mathbf{x}, v_{\parallel}, v_{\perp}, \theta)$ . Function  $\omega$  is given by (53) and is positive. Solving (60) will give  $\Upsilon_5(\mathbf{x}, v_{\parallel}, v_{\perp}, \theta)$  which is the expression of component  $k$  of the Darboux Coordinates in terms of the Cylindrical in Velocity Coordinates  $(\mathbf{x}, v_{\parallel}, v_{\perp}, \theta)$ .

To solve this equation we will use the Method of Characteristics.

**Method of Characteristics** - Dividing by  $\omega$ , which is possible since  $\omega$  is positive, (60) gives

$$\frac{\partial \Upsilon_5}{\partial v_{\perp}} + \varepsilon \frac{v_{\perp} F_1}{|\mathbf{B}|} \frac{\partial \Upsilon_5}{\partial x_1} + \varepsilon \frac{v_{\perp} F_2}{|\mathbf{B}|} \frac{\partial \Upsilon_5}{\partial x_2} + \varepsilon \frac{v_{\perp} F_3}{|\mathbf{B}|} \frac{\partial \Upsilon_5}{\partial x_3} + \varepsilon \frac{v_{\perp} F_{\parallel}}{|\mathbf{B}|} \frac{\partial \Upsilon_5}{\partial v_{\parallel}} = \frac{v_{\perp}}{|\mathbf{B}|}. \quad (61)$$

In order to get a solution to this equation, we need to add a boundary (or initial) condition in a point where the involved vector field  $(\varepsilon v_{\perp}/|\mathbf{B}|)(F_1, F_2, F_3, F_{\parallel})$  does not vanish. Hence we set

$$\Upsilon_5|_{v_{\perp}=\nu} = 0 \quad \text{for a small } \nu > 0. \quad (62)$$

We consider the following characteristics  $(\mathcal{X}, \mathcal{V}_{\parallel}) = (\mathcal{X}_1, \mathcal{X}_2, \mathcal{X}_3, \mathcal{V}_{\parallel})$ :

$$\begin{aligned} \mathcal{X}_1(v_{\perp}; \mathbf{x}, v_{\parallel}, u_{\perp}) \text{ such that } & \frac{\partial \mathcal{X}_1}{\partial v_{\perp}} = \varepsilon \frac{v_{\perp} F_1(\mathcal{X}_1, \mathcal{X}_2, \mathcal{X}_3, \mathcal{V}_{\parallel}, v_{\perp}, \theta)}{|\mathbf{B}|(\mathcal{X}_1, \mathcal{X}_2, \mathcal{X}_3)}, & \mathcal{X}_1(u_{\perp}) = x_1, \\ \mathcal{X}_2(v_{\perp}; \mathbf{x}, v_{\parallel}, u_{\perp}) \text{ such that } & \frac{\partial \mathcal{X}_2}{\partial v_{\perp}} = \varepsilon \frac{v_{\perp} F_2(\mathcal{X}_1, \mathcal{X}_2, \mathcal{X}_3, \mathcal{V}_{\parallel}, v_{\perp}, \theta)}{|\mathbf{B}|(\mathcal{X}_1, \mathcal{X}_2, \mathcal{X}_3)}, & \mathcal{X}_2(u_{\perp}) = x_2, \\ \mathcal{X}_3(v_{\perp}; \mathbf{x}, v_{\parallel}, u_{\perp}) \text{ such that } & \frac{\partial \mathcal{X}_3}{\partial v_{\perp}} = \varepsilon \frac{v_{\perp} F_3(\mathcal{X}_1, \mathcal{X}_2, \mathcal{X}_3, \mathcal{V}_{\parallel}, v_{\perp}, \theta)}{|\mathbf{B}|(\mathcal{X}_1, \mathcal{X}_2, \mathcal{X}_3)}, & \mathcal{X}_3(u_{\perp}) = x_3, \\ \mathcal{V}_{\parallel}(v_{\perp}; \mathbf{x}, v_{\parallel}, u_{\perp}) \text{ such that } & \frac{\partial \mathcal{V}_{\parallel}}{\partial v_{\perp}} = \varepsilon \frac{v_{\perp} F_{\parallel}(\mathcal{X}_1, \mathcal{X}_2, \mathcal{X}_3, \mathcal{V}_{\parallel}, v_{\perp}, \theta)}{|\mathbf{B}|(\mathcal{X}_1, \mathcal{X}_2, \mathcal{X}_3)}, & \mathcal{V}_{\parallel}(u_{\perp}) = v_{\parallel}, \end{aligned} \quad (63)$$

and the solution to (61) - (62) is given by

$$\begin{aligned} \Upsilon_5(\mathbf{x}, v_{\parallel}, v_{\perp}, \theta) &= \Upsilon_5(\mathcal{X}(\nu; \mathbf{x}, v_{\parallel}, v_{\perp}), \mathcal{V}_{\parallel}(\nu; \mathbf{x}, v_{\parallel}, v_{\perp}), \nu, \theta) + \int_{\nu}^{v_{\perp}} \frac{s}{|\mathbf{B}(\mathcal{X}(s; \mathbf{x}, v_{\parallel}, v_{\perp}))|} ds \\ &= \int_{\nu}^{v_{\perp}} \frac{s}{|\mathbf{B}(\mathcal{X}(s; \mathbf{x}, v_{\parallel}, v_{\perp}))|} ds. \end{aligned} \quad (64)$$

(The last equality is gotten because of (62).)

Rewriting system (63) in the following compact form,

$$\frac{\partial \begin{pmatrix} \mathcal{X} \\ \mathcal{V}_{\parallel} \end{pmatrix}}{\partial v_{\perp}} = \varepsilon \mathbf{F}(\mathcal{X}_1, \mathcal{V}_{\parallel}, v_{\perp}, \theta), \quad \begin{pmatrix} \mathcal{X} \\ \mathcal{V}_{\parallel} \end{pmatrix}(u_{\perp}) = \begin{pmatrix} \mathbf{x} \\ v_{\parallel} \end{pmatrix}, \quad (65)$$

with  $\mathbf{F} = (v_{\perp}/|\mathbf{B}|)(F_1, F_2, F_3, F_{\parallel})$  and applying the formula that gives the expansion of the solution of a dynamical system in terms of its parameter, we get that



$$\begin{pmatrix} \boldsymbol{\mathcal{X}} \\ \nu_{\parallel} \end{pmatrix} = \begin{pmatrix} \mathbf{x} \\ v_{\parallel} \end{pmatrix} (v_{\perp}; \mathbf{x}, v_{\parallel}, u_{\perp}), \quad (66)$$

writes

$$\begin{aligned} \begin{pmatrix} \boldsymbol{\mathcal{X}} \\ \nu_{\parallel} \end{pmatrix} &= \begin{pmatrix} \mathbf{x} \\ v_{\parallel} \end{pmatrix} + \frac{v_{\perp}}{1!} \varepsilon \mathbf{F}(\mathbf{x}, v_{\parallel}, v_{\perp}, \theta) + \frac{v_{\perp}^2}{2!} \mathcal{L}_{\varepsilon \mathbf{F}}(\varepsilon \mathbf{F})(\mathbf{x}_1, v_{\parallel}, v_{\perp}, \theta) \\ &\quad + \frac{v_{\perp}^3}{3!} \mathcal{L}_{\varepsilon^2 \mathbf{F}}^2(\varepsilon \mathbf{F})(\mathbf{x}_1, v_{\parallel}, v_{\perp}, \theta) + \dots \\ &= \begin{pmatrix} \mathbf{x} \\ v_{\parallel} \end{pmatrix} + \frac{\varepsilon v_{\perp}}{1!} \mathbf{F}(\mathbf{x}, v_{\parallel}, v_{\perp}, \theta) + \frac{\varepsilon^2 v_{\perp}^2}{2!} \mathcal{L}_{\mathbf{F}}(\mathbf{F})(\mathbf{x}_1, v_{\parallel}, v_{\perp}, \theta) \\ &\quad + \frac{\varepsilon^3 v_{\perp}^3}{3!} \mathcal{L}_{\mathbf{F}}^2(\mathbf{F})(\mathbf{x}_1, v_{\parallel}, v_{\perp}, \theta) + \dots \end{aligned} \quad (67)$$

where  $\mathcal{L}_{\mathbf{F}}(\mathbf{F})$  is the the Lie Derivative of vector field  $\mathbf{F}$  in the direction of vector field  $\mathbf{F}$ ,  $\mathcal{L}_{\mathbf{F}}^2(\mathbf{F}) = \mathcal{L}_{\mathbf{F}}(\mathcal{L}_{\mathbf{F}}(\mathbf{F}))$  and  $\mathcal{L}_{\mathbf{F}}^3(\mathbf{F}) = \mathcal{L}_{\mathbf{F}}(\mathcal{L}_{\mathbf{F}}^2(\mathbf{F}))$ , and so on.

Rewriting this expansion, we get

$$\boldsymbol{\mathcal{X}} = \mathbf{x} + \varepsilon v_{\perp} \boldsymbol{\mathcal{X}}^1 + \varepsilon^2 v_{\perp}^2 \boldsymbol{\mathcal{X}}^2 + \varepsilon^3 v_{\perp}^3 \boldsymbol{\mathcal{X}}^3 + \dots \quad (68)$$

$$\nu_{\parallel} = v_{\parallel} + \varepsilon v_{\perp} \nu_{\parallel}^1 + \varepsilon^2 v_{\perp}^2 \nu_{\parallel}^2 + \varepsilon^3 v_{\perp}^3 \nu_{\parallel}^3 + \dots \quad (69)$$

with

$$\begin{pmatrix} \boldsymbol{\mathcal{X}}^1 \\ \nu_{\parallel}^1 \end{pmatrix} = \mathbf{F}(\mathbf{x}, v_{\parallel}, v_{\perp}, \theta), \quad \begin{pmatrix} \boldsymbol{\mathcal{X}}^2 \\ \nu_{\parallel}^2 \end{pmatrix} = \frac{1}{2!} \mathcal{L}_{\mathbf{F}}(\mathbf{F})(\mathbf{x}, v_{\parallel}, v_{\perp}, \theta), \quad \begin{pmatrix} \boldsymbol{\mathcal{X}}^3 \\ \nu_{\parallel}^3 \end{pmatrix} = \frac{1}{3!} \mathcal{L}_{\mathbf{F}}^2(\mathbf{F})(\mathbf{x}, v_{\parallel}, v_{\perp}, \theta), \dots \quad (70)$$

Now, injecting (69) in expression (64) on  $\boldsymbol{\Upsilon}_5$ , we get:

$$\begin{aligned} \boldsymbol{\Upsilon}_5(\mathbf{x}, v_{\parallel}, v_{\perp}, \theta) &= \int_{\nu}^{v_{\perp}} \frac{s}{|\mathbf{B}(\boldsymbol{\mathcal{X}}(s; \mathbf{x}, v_{\parallel}, v_{\perp}))|} ds = \\ &\quad \int_{\nu}^{v_{\perp}} \frac{s}{|\mathbf{B}(\mathbf{x})|} ds + \varepsilon \int_{\nu}^{v_{\perp}} s^2 \mathcal{T}^1\left(\frac{1}{|\mathbf{B}(\mathbf{x})|}\right) \boldsymbol{\mathcal{X}}^1 ds + \\ &\quad \varepsilon^2 \int_{\nu}^{v_{\perp}} s^3 \left( \mathcal{T}^2\left(\frac{1}{|\mathbf{B}(\mathbf{x})|}\right) \boldsymbol{\mathcal{X}}^1 + \mathcal{T}^1\left(\frac{1}{|\mathbf{B}(\mathbf{x})|}\right) \boldsymbol{\mathcal{X}}^2 \right) ds + \dots \\ &= \frac{(v_{\perp} - \nu)^2}{2|\mathbf{B}(\mathbf{x})|} + \varepsilon \int_{\nu}^{v_{\perp}} s^2 \mathcal{T}^1\left(\frac{1}{|\mathbf{B}(\mathbf{x})|}\right) \boldsymbol{\mathcal{X}}^1 ds + \\ &\quad \varepsilon^2 \int_{\nu}^{v_{\perp}} s^3 \left( \mathcal{T}^2\left(\frac{1}{|\mathbf{B}(\mathbf{x})|}\right) \boldsymbol{\mathcal{X}}^1 + \mathcal{T}^1\left(\frac{1}{|\mathbf{B}(\mathbf{x})|}\right) \boldsymbol{\mathcal{X}}^2 \right) ds + \dots, \end{aligned} \quad (71)$$

where  $\mathcal{T}^i(1/|\mathbf{B}(\mathbf{x})|)$  is the  $i^{\text{th}}$  coefficient of the Taylor expansion of  $1/|\mathbf{B}(\mathbf{x})|$ .

Formula (71) gives the expression of  $\boldsymbol{\Upsilon}_5$ , i.e. the expression of new variable  $k$  in terms of Cylindrical Coordinates  $(\mathbf{x}, v_{\parallel}, v_{\perp}, \theta)$ , as an expansion in  $\varepsilon$ .

**Remark 5.3.** In (71), it is possible to choose  $\nu$  as small as we want. Hence, the first term of the expansion is essentially the Magnetic Moment  $v_{\perp}/|\mathbf{B}(\mathbf{x})|$ .

### On other equations and on Poisson Matrix in Darboux Coordinates

Equation (56) was processed and gave expression of  $k$ . Equations (57) can be processed using similar Methods of Characteristics. A special attention needs to be given to the fact that  $\Upsilon_1, \dots, \Upsilon_4$  are solutions of a PDE involving  $\Upsilon_5$  and of another one involving  $\Upsilon_6$  that need to be tackled together. They will give  $\mathbf{y}$  and  $u_{\parallel}$  as expansions in  $\varepsilon$ . Once this done, we will have

$$\Upsilon = \Upsilon_0 + \varepsilon \Upsilon_1 + \varepsilon^2 \Upsilon_2 + \varepsilon^3 \Upsilon_3 + \dots, \quad (72)$$

or, in other words, the expression of  $(\mathbf{y}, u_{\parallel}, k)$  in terms of  $(\mathbf{x}, v_{\parallel}, v_{\perp}, \theta)$  and as an expansion in  $\varepsilon$ .

The other terms of the new Poisson matrix  $\overline{\mathcal{P}}_{\eta}^{\varepsilon}(\mathbf{y}, u_{\parallel}, k, \theta)$  are given computing:  $(\widehat{\mathcal{P}}_{\eta}^{\varepsilon})_{12} = \{\Upsilon_1, \Upsilon_2\} (= \{\Upsilon_{y_1}, \Upsilon_{y_2}\} = \{y_1, y_2\})$ ,  $(\widehat{\mathcal{P}}_{\eta}^{\varepsilon})_{13} = \{\Upsilon_1, \Upsilon_3\} (= \{\Upsilon_{y_1}, \Upsilon_{y_3}\} = \{y_1, y_3\})$ ,  $\dots$

**Hamiltonian Function in Darboux Coordinates -** We now have to compute the Hamiltonian Function in the Darboux Coordinates. For this, we build from expansion (72) of  $\Upsilon$ , an asymptotic expansion of  $\xi = \Upsilon^{-1}$ :

$$\xi = \xi_0 + \varepsilon \xi_1 + \varepsilon^2 \xi_2 + \varepsilon^3 \xi_3 + \dots \quad (73)$$

Then, we use the expression of the Hamiltonian Function in Cylindrical in Velocity Coordinates:

$$\widetilde{H}_{\eta}^{\varepsilon}(\mathbf{x}, v_{\parallel}, v_{\perp}, \theta) = \frac{1}{2}(v_{\parallel}^2 + v_{\perp}^2) + \Phi_0(\mathbf{x}) + \eta \Phi_1\left(\frac{\mathbf{x}}{\eta}\right), \quad (74)$$

and the following formula, which is gotten from (40),

$$\begin{aligned} \overline{H}_{\eta}^{\varepsilon}(\mathbf{y}, u_{\parallel}, k, \theta) &= \widetilde{H}_{\eta}^{\varepsilon}(\xi(\mathbf{y}, u_{\parallel}, k, \theta)) = \widetilde{H}_{\eta}^{\varepsilon}(\xi_0 + \varepsilon \xi_1 + \varepsilon^2 \xi_2 + \varepsilon^3 \xi_3 + \dots) = \\ &= \widetilde{H}_{\eta}^{\varepsilon}(\xi_0) + \varepsilon \mathcal{T}^1(\widetilde{H}_{\eta}^{\varepsilon})(\xi_0) \cdot \xi_1 + \dots = \\ &= \frac{u_{\parallel}^2}{2} + |\mathbf{B}(\mathbf{y})|k + \Phi_0(\mathbf{y}) + \eta \Phi_1\left(\frac{\mathbf{y}}{\eta}\right) + \varepsilon \overline{H}_{1,\eta}(\mathbf{y}, u_{\parallel}, k, \theta) + \varepsilon^2 \overline{H}_{2,\eta}(\mathbf{y}, u_{\parallel}, k, \theta) + \dots \end{aligned} \quad (75)$$

Notice that for this expansion to be valid, it is necessary to have the property we mention on page 7:  $\eta = \varepsilon^{1-\kappa}$  for  $\kappa > 0$ .

In expression (75), there is an important fact for the setting out of the to come Lie Transform based Method: the first term is independent of  $\theta$ .

## 6 Lie Transform based Method

**Lie Transform based Method Target -** As a result of the Darboux Algorithm, we obtained a Poisson Matrix  $\overline{\mathcal{P}}_{\eta}^{\varepsilon}(\mathbf{y}, u_{\parallel}, k, \theta)$  with the required form to apply the Key Result (Theorem 2.1), but the resulting Hamiltonian Function

$$\overline{H}_{\eta}^{\varepsilon}(\mathbf{y}, u_{\parallel}, k, \theta) = \overline{H}_{0,\eta}(\mathbf{y}, u_{\parallel}, k) + \varepsilon \overline{H}_{1,\eta}(\mathbf{y}, u_{\parallel}, k, \theta) + \varepsilon^2 \overline{H}_{2,\eta}(\mathbf{y}, u_{\parallel}, k, \theta) + \dots, \quad (76)$$

depends on  $\theta$ . And we need to make this dependency to vanish.

Let us notice two important facts, which are in fact linked: The first term in the asymptotic expansion (75) does not depend on  $\theta$  and the Hamiltonian Function expressed in the Cylindrical in Velocity Coordinates does not depend on  $\theta$ . The consequence of those facts is that it is certainly possible to make the last variable to vanish using a mapping parametrized by  $\varepsilon$  and close to identity for small  $\varepsilon$ . Moreover, we need to build this sought mapping in such a way that it does not change the Poisson Matrix expression. This means that, as viewed as functions,  $\overline{\mathcal{P}}_\eta^\varepsilon$  and  $\widehat{\mathcal{P}}_\eta^\varepsilon$  must be the same, i.e.:

$$\widehat{\mathcal{P}}_\eta^\varepsilon(\mathbf{z}, w_\parallel, j, \gamma) = \overline{\mathcal{P}}_\eta^\varepsilon(\mathbf{z}, w_\parallel, j, \gamma) \text{ or } \overline{\mathcal{P}}_\eta^\varepsilon(\mathbf{y}, u_\parallel, k, \theta) = \widehat{\mathcal{P}}_\eta^\varepsilon(\mathbf{y}, u_\parallel, k, \theta), \quad (77)$$

for any  $\mathbf{z}, w_\parallel, j, \gamma$  or  $\mathbf{y}, u_\parallel, k, \theta$ . Yet, among changes of variables, the symplectic ones do not change the Poisson Matrix expression. And among symplectic changes of variables, are the flows of Hamiltonian Vector Fields, which are moreover close to identity for small values of their parameter.

Hence, the Lie Transform based Method consists in building a change of variables, parametrized by  $\varepsilon$ , reading

$$(\mathbf{y}, u_\parallel, k, \theta) \mapsto (\mathbf{z}, w_\parallel, j, \gamma) = \zeta(\varepsilon; \mathbf{y}, u_\parallel, k, \theta), \quad (78)$$

with

$$\zeta(\varepsilon; \mathbf{y}, u_\parallel, k, \theta) = (\mathbf{y}, u_\parallel, k, \theta) + \varepsilon \zeta_1(\mathbf{y}, u_\parallel, k, \theta) + \varepsilon^2 \zeta_2(\mathbf{y}, u_\parallel, k, \theta) + \dots, \quad (79)$$

which is the flow of parameter  $\varepsilon$  of a Hamiltonian Vector Fields.

**The way to do -** Looking for  $\zeta$  as the flow of a Hamiltonian Vector Field means looking for a Hamiltonian Function:

$$G(\varepsilon; \mathbf{y}, u_\parallel, k, \theta) = G_0(\mathbf{y}, u_\parallel, k, \theta) + \varepsilon G_1(\mathbf{y}, u_\parallel, k, \theta) + \varepsilon^2 G_2(\mathbf{y}, u_\parallel, k, \theta) + \dots, \quad (80)$$

such that  $\zeta(\varepsilon; \mathbf{y}, u_\parallel, k, \theta)$  is solution to:

$$\frac{\partial \zeta}{\partial \varepsilon} = \overline{\mathcal{P}}_\eta^\varepsilon \nabla G, \quad \zeta(\varepsilon = 0; \mathbf{y}, u_\parallel, k, \theta) = (\mathbf{y}, u_\parallel, k, \theta). \quad (81)$$

Hence the target becomes to find functions  $G_0, G_1, G_2, \dots$ , such that:

$$\widehat{H}_\eta^\varepsilon(\mathbf{z}, w_\parallel, j) = \overline{H}_\eta^\varepsilon(\boldsymbol{\lambda}(\mathbf{z}, w_\parallel, j, \gamma)) \text{ where } \boldsymbol{\lambda} = \zeta^{-1}. \quad (82)$$

**A result -** We will use the following theorem

**Theorem 6.1.** *For any two Hamiltonian Functions:*

$$\overline{H}_\eta^\varepsilon(\mathbf{y}, u_\parallel, k, \theta) = \overline{H}_{0,\eta}(\mathbf{y}, u_\parallel, k) + \varepsilon \overline{H}_{1,\eta}(\mathbf{y}, u_\parallel, k, \theta) + \varepsilon^2 \overline{H}_{2,\eta}(\mathbf{y}, u_\parallel, k, \theta) + \dots, \quad (83)$$

and

$$\widehat{H}_\eta^\varepsilon(\mathbf{z}, w_\parallel, j) = \widehat{H}_{0,\eta}(\mathbf{z}, w_\parallel, j) + \varepsilon \widehat{H}_{1,\eta}(\mathbf{z}, w_\parallel, j) + \varepsilon^2 \widehat{H}_{2,\eta}(\mathbf{z}, w_\parallel, j) + \dots, \quad (84)$$

expressed in two different variable systems  $(\mathbf{y}, u_\parallel, k, \theta)$  and  $(\mathbf{z}, w_\parallel, j, \gamma)$ , with the property that

$$\widehat{H}_{0,\eta}(\mathbf{z}, w_\parallel, j) = \overline{H}_{0,\eta}(\mathbf{z}, w_\parallel, j), \quad (85)$$

There exists a Hamiltonian Function writing

$$G(\varepsilon; \mathbf{y}, u_{\parallel}, k, \theta) = G_0(\mathbf{y}, u_{\parallel}, k, \theta) + \varepsilon G_1(\mathbf{y}, u_{\parallel}, k, \theta) + \varepsilon^2 G_2(\mathbf{y}, u_{\parallel}, k, \theta) + \dots, \quad (86)$$

such that the solution  $\zeta$  of the Hamiltonian Dynamical System associated with  $G$  and with parameter  $\varepsilon$ , i.e. solution to:

$$\frac{\partial \zeta}{\partial \varepsilon} = \overline{\mathcal{P}}_{\eta}^{\varepsilon} \nabla G, \quad \zeta(\varepsilon = 0; \mathbf{z}, w_{\parallel}, j, \gamma) = (\mathbf{y}, u_{\parallel}, k, \theta), \quad (87)$$

is such that

$$\widehat{H}_{\eta}^{\varepsilon}(\mathbf{z}, w_{\parallel}, j) = \overline{H}_{\eta}^{\varepsilon}(\boldsymbol{\lambda}(\mathbf{z}, w_{\parallel}, j, \gamma)) \text{ where } \boldsymbol{\lambda} = \zeta^{-1}. \quad (88)$$

Moreover, the Hamiltonian Function  $g(\varepsilon; \mathbf{z}, w_{\parallel}, j, \gamma)$  such that  $\boldsymbol{\lambda}$  is solution to

$$\frac{\partial \boldsymbol{\lambda}}{\partial \varepsilon} = \overline{\mathcal{P}}_{\eta}^{\varepsilon} \nabla g, \quad \boldsymbol{\lambda}(\varepsilon = 0; \mathbf{z}, w_{\parallel}, j, \gamma) = (\mathbf{z}, w_{\parallel}, j, \gamma), \quad (89)$$

writes

$$g(\varepsilon; \mathbf{z}, w_{\parallel}, j, \gamma) = g_0(\mathbf{z}, w_{\parallel}, j, \gamma) + \varepsilon g_1(\mathbf{z}, w_{\parallel}, j, \gamma) + \varepsilon^2 g_2(\mathbf{z}, w_{\parallel}, j, \gamma) + \dots, \quad (90)$$

where  $g_0, g_1, g_2, \dots$  are given by

$$\begin{aligned} \{g_0, \overline{H}_{0,\eta}\} &= \mathcal{O}_0(\overline{H}_{0,\eta}), & \{g_1, \overline{H}_{0,\eta}\} &= \mathcal{O}_1(\overline{H}_{0,\eta}, \overline{H}_{1,\eta}, \widehat{H}_{1,\eta}, g_0), \\ \{g_2, \overline{H}_{0,\eta}\} &= \mathcal{O}_2(\overline{H}_{0,\eta}, \overline{H}_{1,\eta}, \widehat{H}_{1,\eta}, \overline{H}_{2,\eta}, \widehat{H}_{2,\eta}, g_0, g_1), \dots \end{aligned} \quad (91)$$

for differential operators  $\mathcal{O}_0, \mathcal{O}_1, \mathcal{O}_2, \dots$  defined by recursive formula.

**Remark 6.1.** Despite we do not explicitly write the dependency of  $\boldsymbol{\lambda}, g_0, g_1, g_2, \dots, \boldsymbol{\lambda}$  and  $G_0, G_1, G_2, \dots$  with respect  $\eta$  to all those functions do depend on  $\eta$ . Here again, to be able to write the expansions with respect to  $\varepsilon$ , it is necessary to have the property mentioned on page 7:  $\eta = \varepsilon^{1-\kappa}$  for  $\kappa > 0$ .

**The Lie Transform based Method -** As in the case of the Darboux Algorithm, we do not do the computations that give  $\zeta$  and  $\boldsymbol{\lambda}$ . We only give the steps that allows us to get them. The Lie Transform based Method may be summarized as:

1. Fix :  $\widehat{H}_{1,\eta}(\mathbf{z}, w_{\parallel}, j), \widehat{H}_{2,\eta}(\mathbf{z}, w_{\parallel}, j), \dots$   
They can be fixed, a priori, with no restriction. Nevertheless those functions are involved in the PDEs of (91). Hence, they need to be chosen in a way that leads to PDEs which are as simple as possible to solve.
2. Solve PDE in (91) to get  $g_0, g_1, g_2$  recursively.  
They are quite complex but we can solve them using the Method of Characteristics.
3. Get  $\zeta$  solving (87).  
It is gotten as an expansion in  $\varepsilon$ .
4. Compute expression of the Lie Variables:  $(\mathbf{z}, w_{\parallel}, j, \gamma) = \zeta(\mathbf{y}, u_{\parallel}, k, \theta)$
5. Since  $\widehat{H}_{1,\eta}, \widehat{H}_{2,\eta}, \dots$  were fixed in the begining of the process, it is not necessary to compute  $\boldsymbol{\lambda}$  to get:  $\widehat{H}_{\eta}^{\varepsilon}(\mathbf{z}, w_{\parallel}, j) = \overline{H}_{\eta}^{\varepsilon}(\boldsymbol{\lambda}(\mathbf{z}, w_{\parallel}, j, \gamma))$ . Nonetheless,  $\boldsymbol{\lambda}$  may be gotten as an expansion in  $\varepsilon$  by inverting expansion of  $\zeta$ .

## 7 Brief conclusion

At the end of the day, in the Lie Coordinates System, the trajectory  $(\mathbf{Z}, W_{\parallel}, J, \Gamma)$  of a charged particle is solution to a Dynamical System which has the following form:

$$\frac{\partial \Gamma}{\partial t} = \text{Something complicated}, \quad (92)$$

$$\frac{\partial J}{\partial t} = 0, \quad (93)$$

$$\frac{\partial \begin{pmatrix} \mathbf{Z} \\ W_{\parallel} \end{pmatrix}}{\partial t} = \text{Something independent of } \Gamma. \quad (94)$$

This form is essentially the same as the one of (11).

As a conclusion, we just say that the method which is summarized here is the one that allows us to get (11) or any other Gyro-Kinetic Approximation Model.

Insisting one more time, the important facts in system (92) - (94) is that the evolution of the components  $\mathbf{Z}$  and  $W_{\parallel}$  of the trajectory and of its  $\gamma$ -component  $\Gamma$  are uncoupled and that component  $J$  does not evolve and then becomes a parameter. Hence, even if the  $\gamma$ -component  $\Gamma$  is not computed, it does not preclude the computation of  $J$ ,  $\mathbf{Z}$  and  $W_{\parallel}$  solving a collection, parametrized by  $J$ , of four-dimensional Dynamical Systems.

## References

- [1] J. A. Brizard. Nonlinear gyrokinetic Vlasov equation for toroidally rotating axisymmetric tokamaks. *Physics of Plasmas*, 2(2):459–471, 1995.
- [2] D. H. E. Dubin, J. A. Krommes, C. Oberman, and W. W. Lee. Nonlinear gyrokinetic equations. *Physics of Fluids*, XXVI(12):3524–3535, 1983.
- [3] E. A. Frieman and L. Chen. Nonlinear gyrokinetic equations for low-frequency electromagnetic waves in general plasma equilibria. *Physics of Fluids*, 25(3):502–508, 1982.
- [4] C. S. Gardner. Adiabatic invariants of periodic classical systems. *Physical Review*, 115, 1959.
- [5] V. Grandgirard, M. Brunetti, P. Bertrand, N. Besse, X. Garbet, P. Ghendrih, G. Manfredi, Y. Sarazin, O. Sauter, E. Sonnendrücker, J. Vaclavik, and L. Villard. A drift-kinetic semi-lagrangian 4d code for ion turbulence simulation. *Journal of Computational Physics*, 217(2):395 – 423, 2006.
- [6] V. Grandgirard, Y. Sarazin, P. Angelino, A. Bottino, N. Crouseilles, G. Darmet, G. Dif-Pradalier, X. Garbet, Ph. Ghendrih, S. Jolliet, G. Latu, E. Sonnendrücker, and L. Villard. Global full- $f$  gyrokinetic simulations of plasma turbulence. *Plasma Physics and Controlled Fusion*, 49(12B):B173, 2007.
- [7] T. S. Hahm. Nonlinear gyrokinetic equations for tokamak microturbulence. *Physics of Fluids*, 31(9):2670–2673, 1988.
- [8] T. S. Hahm, W. W. Lee, and A. Brizard. Nonlinear gyrokinetic theory for finite-beta plasmas. *Physics of Fluids*, 31(7):1940–1948, 1988.
- [9] P.-V. Koseff. Comparison between deprit and dragt-finn perturbation methods, 1994.

- [10] M. D. Kruskal. *Plasma Physics*, chapter Elementary Orbit and Drift Theory. International Atomic Energy Agency, Vienna, 1965.
- [11] R. G. Littlejohn. A guiding center Hamiltonian: A new approach. *Journal of Mathematical Physics*, 20(12):2445–2458, 1979.
- [12] R. G. Littlejohn. Hamiltonian formulation of guiding center motion. *Physics of Fluids*, 24(9):1730–1749, 1981.
- [13] R. G. Littlejohn. Hamiltonian perturbation theory in noncanonical coordinates. *Journal of Mathematical Physics*, 23(5):742–747, 1982.
- [14] T. G. Northrop. The guiding center approximation to charged particle motion. *Annals of Physics*, 15(1):79–101, 1961.
- [15] T. G. Northrop and J. A. Rome. Extensions of guiding center motion to higher order. *Physics of Fluids*, 21(3):384–389, 1978.
- [16] F. I. Parra and P. J. Catto. Limitations of gyrokinetics on transport time scales. *Plasma Physics and Controlled Fusion*, 50(6):065014, 2008.
- [17] F. I. Parra and P. J. Catto. Gyrokinetic equivalence. *Plasma Physics and Controlled Fusion*, 51(6):065002, 2009.
- [18] F. I. Parra and P. J. Catto. Turbulent transport of toroidal angular momentum in low flow gyrokinetics. *Plasma Physics and Controlled Fusion*, 52(4):045004, 2010.