



**HAL**  
open science

## On the retinal toxicity of intra ocular glucocorticoids

Alicia Torriglia, Fatemeh Valamanesh, Francine Behar-Cohen

► **To cite this version:**

Alicia Torriglia, Fatemeh Valamanesh, Francine Behar-Cohen. On the retinal toxicity of intra ocular glucocorticoids. *Biochemical Pharmacology*, 2010, 80 (12), pp.1878. 10.1016/j.bcp.2010.07.012 . hal-00637149

**HAL Id: hal-00637149**

**<https://hal.science/hal-00637149>**

Submitted on 31 Oct 2011

**HAL** is a multi-disciplinary open access archive for the deposit and dissemination of scientific research documents, whether they are published or not. The documents may come from teaching and research institutions in France or abroad, or from public or private research centers.

L'archive ouverte pluridisciplinaire **HAL**, est destinée au dépôt et à la diffusion de documents scientifiques de niveau recherche, publiés ou non, émanant des établissements d'enseignement et de recherche français ou étrangers, des laboratoires publics ou privés.

## Accepted Manuscript

Title: On the retinal toxicity of intra ocular glucocorticoids

Authors: Alicia Torriglia, Fatemeh Valamanesh, Francine Behar-Cohen

PII: S0006-2952(10)00523-X  
DOI: doi:10.1016/j.bcp.2010.07.012  
Reference: BCP 10645

To appear in: *BCP*

Received date: 29-4-2010  
Revised date: 6-7-2010  
Accepted date: 8-7-2010

Please cite this article as: Torriglia A, Valamanesh F, Behar-Cohen F, On the retinal toxicity of intra ocular glucocorticoids, *Biochemical Pharmacology* (2010), doi:10.1016/j.bcp.2010.07.012

This is a PDF file of an unedited manuscript that has been accepted for publication. As a service to our customers we are providing this early version of the manuscript. The manuscript will undergo copyediting, typesetting, and review of the resulting proof before it is published in its final form. Please note that during the production process errors may be discovered which could affect the content, and all legal disclaimers that apply to the journal pertain.



**On the retinal toxicity of intra ocular glucocorticoids**

Alicia Torriglia<sup>a,b,c,g</sup>, Fatemeh Valamanesh<sup>c,e</sup>, Francine Behar-Cohen<sup>a,b,c,d</sup>

**a.** INSERM, Centre de Recherches des Cordeliers, UMR S 872, 15, rue de L'école de médecine 75006 Paris, France ; **b.** Université Pierre et Marie Curie - Paris 6 ; **c.** Université Paris Descartes ; **d.** Assistance publique hôpitaux de Paris, Hotel-Dieu de Paris ; **e.** Fondation ophtalmologique Adolphe de Rothschild, Paris, France ; **g.** Ecole Nationale Vétérinaire D'Alfort

Corresponding author :

Dr. Alicia Torriglia

INSERM UMRS 872 lab 17

15, rue de l'Ecole de Médecine

75006 Paris

France

e-mail: [alicia.torriglia@inserm.fr](mailto:alicia.torriglia@inserm.fr)

Tel: + 33 1 40 46 78 50

Fax:+ 33 1 40 46 78 65 (or 55)

Authors e-mails':

Fatemeh Valamanesh : fatemeh [valamanesh@inserm.fr](mailto:valamanesh@inserm.fr)

Francine Behar-Cohen: [francine.behar@gmail.com](mailto:francine.behar@gmail.com)

Accepted Manuscript

1  
2  
3  
4  
5  
6  
7  
8  
9  
10  
11  
12  
13  
14  
15  
16  
17  
18  
19  
20  
21  
22  
23  
24  
25  
26  
27  
28  
29  
30  
31  
32  
33  
34  
35  
36  
37  
38  
39  
40  
41  
42  
43  
44  
45  
46  
47  
48  
49  
50  
51  
52  
53  
54  
55  
56  
57  
58  
59  
60  
61  
62  
63  
64  
65

## Abstract

1  
2  
3 Corticosteroids are hormones involved in many physiological responses such as  
4 stress, immune modulation, protein catabolism and water homeostasis. The  
5  
6 subfamily of glucocorticoids are used systemically in the treatment of inflammatory  
7  
8 diseases or allergic reactions. In the eye, glucocorticoides are used to treat macular  
9  
10 oedema, inflammation and neovascularization. The most commonly used  
11  
12 glucocorticoid is Triamcinolone acetonide (TA). The pharmaceutical formulation of  
13  
14 TA is not adapted for intravitreal administration but has been selected by  
15  
16 ophthalmologists because its very low intraocular solubility provides sustained effect.  
17  
18 Visual benefits of intraocular TA do not clearly correlate with morpho-anatomical  
19  
20 improvements, suggesting potential toxicity. We therefore studied, non common, but  
21  
22 deleterious effects of glucocorticoids on the retina. We found that the intravitreal  
23  
24 administration of TA is beneficial in the treatment of neovascularization because it  
25  
26 triggers cell death of endothelial cells of neovessels by a caspase independent  
27  
28 mechanism. However, this treatment is toxic for the retina because it induces a non-  
29  
30 apoptotic, caspase independent cell death related to paraptosis, mostly in the retinal  
31  
32 pigmented epithelium cells and the Müller cells.  
33  
34  
35  
36  
37  
38  
39  
40  
41  
42  
43  
44  
45  
46

47 Keywords: retina, glucocorticoids, non apoptotic cell death, caspase-independent  
48 cell death, intravitreal administration  
49  
50  
51  
52  
53  
54  
55  
56  
57  
58  
59  
60  
61  
62  
63  
64  
65

## 1. Corticosteroids

1  
2  
3 Corticosteroids are hormones produced in the adrenal cortex. They are involved in  
4  
5 many physiological responses such as stress, immune modulation, protein  
6  
7 catabolism and water homeostasis. This hormone family comprises two subfamilies:  
8  
9 mineralocorticoids, involved mostly in electrolyte control and glucocorticoids  
10  
11 controlling fat, protein and carbohydrate metabolism.  
12  
13  
14

15  
16 Therapeutically, glucocorticoids are used systemically in the treatment of  
17  
18 inflammatory diseases like arthritis, asthma and allergic reactions. They are also  
19  
20 administered topically to the skin, nose or lungs [1].  
21  
22  
23  
24  
25  
26

## 2. The use of glucocorticoids in the eye

27  
28 The retina is a neural tissue lining in the inner surface of the eye. In humans and  
29  
30 other vertebrates the retina is composed of three layers of nerve cell bodies and two  
31  
32 layers of synapses (fig 1A). The outer nuclear layer contains the photoreceptors,  
33  
34 which are the main light sensitive cells of the retina. Two types of photoreceptors are  
35  
36 found: the rods and the cones. Rods provide black-and-white vision, while cones are  
37  
38 responsible for the perception of colour. The inner nuclear layer contains bipolar,  
39  
40 horizontal and amacrine cells, while the ganglion cell layer contains essentially the  
41  
42 ganglion cells. These neural layers are separated by two layers of synaptic contacts,  
43  
44 the so called outer and inner plexiform layers (OPL and IPL respectively) (figure 1A).  
45  
46 The neural impulse, originating in the photoreceptors, undergoes complex  
47  
48 processing by the neurons of the inner nuclear layer and exits the retina through the  
49  
50 ganglion cells whose axons form the optic nerve. In the eyes of humans and other  
51  
52  
53  
54  
55  
56  
57  
58  
59  
60  
61  
62  
63  
64  
65

1  
2  
3  
4  
5  
6  
7  
8  
9  
10  
11  
12  
13  
14  
15  
16  
17  
18  
19  
20  
21  
22  
23  
24  
25  
26  
27  
28  
29  
30  
31  
32  
33  
34  
35  
36  
37  
38  
39  
40  
41  
42  
43  
44  
45  
46  
47  
48  
49  
50  
51  
52  
53  
54  
55  
56  
57  
58  
59  
60  
61  
62  
63  
64  
65

primates, the retina has an area where cones are most concentrated, the macula lutea. The macula represents 2-3% of the surface of the retina but is responsible for 90% of the information coming out of the retina. A small depression is seen in the center of the macula, known as fovea, where only cones are found. This is the area of maximal visual acuity (figure 1B).

In order to avoid diffraction of photons by blood cells, the fovea does not contain blood vessels. In addition, the homeostasis of fluids in this region is critical for its proper function. These characteristics are altered in several retinal diseases. For example, an increase in water content in the macula, called macular edema, is one of the leading causes of blindness in diabetic retinopathy. The unbalance between fluid entry and exit in the retina results in increased retinal thickness, intra retinal cysts and sub retinal fluid, forming a cystoid macular edema (Figure 1C). Moreover, a person with macular edema is likely to have blurred vision, leading to social blindness (no recognition of faces, inability to read). In the proliferative forms of diabetic retinopathy (less common since laser photocoagulation has become widely used in industrialized countries), new blood vessels form at the surface of the retina. These new vessels can bleed and induce tractional retinal detachments, ultimately causing total blindness without active treatment.

Intravitreal administration of glucocorticoids is a very commonly practiced treatment for macular edema and less commonly for some forms of neovascularisation [2]. The most frequently used corticoid is Triamcinolone acetonide (TA). This specific corticosteroid formulation, not adapted and not originally indicated for the eye, has been selected by ophthalmologists because of its sustained effect, due to its very low intraocular solubility. The effect of the intravitreal injection of TA is impressive in

1  
2  
3  
4  
5  
6  
7  
8  
9  
10  
11  
12  
13  
14  
15  
16  
17  
18  
19  
20  
21  
22  
23  
24  
25  
26  
27  
28  
29  
30  
31  
32  
33  
34  
35  
36  
37  
38  
39  
40  
41  
42  
43  
44  
45  
46  
47  
48  
49  
50  
51  
52  
53  
54  
55  
56  
57  
58  
59  
60  
61  
62  
63  
64  
65

some aspects. For instance, a single administration results in a dramatic decrease in macular edema. [Figure 1 C and D shows OCT images of the same eye before and 1 week after injection](#). This effect begins to be noticed already one hour after the treatment. When used for the treatment of choroidal neovascularizations associated with Age-related Macular Degeneration (AMD), for example, TA decreases the vascular leakage in the short-term. The vascular effects of TA have been confirmed in animal models of choroidal and retinal neovascularization [3].

In spite of these positive effects of TA on retinal anatomy, the improvement of long term visual acuity is observed in only 50% of patients treated for macular edema [4]. When associated with other anti vascular drugs for the treatment of neovascular AMD, severe side effects have been reported [5].

In addition, the safety of TA is still a subject of controversies. In particular, it is not clear whether the observed toxicity results from the glucocorticoids themselves (including TA) or is a consequence of the use of specific vehicles . This led us to investigate the toxicity of glucocorticoids in the retina, with a particular emphasis on TA.

### 3. The toxicity of TA in the retina

Previous research has allowed the toxicity of TA in non ocular tissues to be minimized. However, the toxic effect of TA is a fact and has been initially reported after administration to chick embryo where it is responsible for lymphocyte toxicity and malformations [6]. Several authors have also performed studies on TA toxicity in the retina. A non exhaustive list is shown in Table 1. Overall, this table indicates that the results are inconclusive, spanning from toxic to non toxic effects for TA, or



1 pointing to the toxic effects of preservative used in the pharmaceutical preparations.

2 One of the most limiting points of these studies is that no mechanism of cell death  
3 could be identified, thus questioning the suspected toxicity of TA.  
4

5  
6 A similar situation can be seen concerning the control of neovascularization with this  
7 drug. TA has been shown to down regulate the expression of tumour necrosis factor  
8  $\alpha$ , vascular endothelial growth factor (VEGF), interleukin 1, and matrix  
9 metalloproteinases, all of them influencing neovascularization [7, 8]. TA has also  
10 been reported to have an anti-proliferative effect on endothelial cells [9, 10]. So far,  
11 the antiangiogenic/angiostatic activity of corticosteroids results from a combination of  
12 factors. It remains however unknown if TA can directly induce vascular endothelial  
13 cell death.  
14  
15  
16  
17  
18  
19  
20  
21  
22  
23  
24  
25  
26  
27  
28

### 29 **3.1 The mechanisms of cell death**

30  
31 During most pathological processes cell death is essentially carried out  
32 through either passive or active mechanisms. Passive mechanisms are involved in  
33 extreme cell injury and end up into the release of the entire cell contents in the  
34 tissue. This process of cell death is called necrosis. By contrast, the cells suffering  
35 from mild or light injury die through an active and programmed cell death [11] that  
36 will protect the neighbouring cells from extensive damage. Caspase-dependent  
37 apoptosis is the most widely studied and characterized pathway of programmed cell  
38 death (for a review see [12]). However, other forms of active cell death are now  
39 recognized and their role in tissue homeostasis and pathology is being unveiled [13-  
40 15]. Thus, other apoptotic caspase-independent mechanisms (also called apoptotic-  
41 like mechanisms) have been described. Caspase-independent cell death  
42 mechanisms result from the activation of other proteases such as calpains [16]  
43  
44  
45  
46  
47  
48  
49  
50  
51  
52  
53  
54  
55  
56  
57  
58  
59  
60  
61  
62  
63  
64  
65

1  
2  
3  
4  
5  
6  
7  
8  
9  
10  
11  
12  
13  
14  
15  
16  
17  
18  
19  
20  
21  
22  
23  
24  
25  
26  
27  
28  
29  
30  
31  
32  
33  
34  
35  
36  
37  
38  
39  
40  
41  
42  
43  
44  
45  
46  
47  
48  
49  
50  
51  
52  
53  
54  
55  
56  
57  
58  
59  
60  
61  
62  
63  
64  
65

cathepsins [17, 18] or serine proteases [19, 20] that in turn activate other effectors of cell death such as Apoptosis-Inducing Factor, AIF [21] or L-DNase II [22, 23]. In recent years other processes have been considered as involved in mechanisms of cell death. Autophagy, for instance, is an evolutionarily conserved mechanism allowing the elimination of unnecessary or damaged organelles and the recycling of their proteins. In neural cells, autophagy is essential for cell survival, but when over activated may lead to cell death [24, 25]. Recently, an additional cell death program, initiated in the cytoplasm and named paraptosis, has been characterized [13]. This type of cell death has been first described after the activation of the insulin-like growth factor receptor [26-28]. A similar death phenotype is initiated after the activation of neurokinin-1 receptor by its ligand, substance-P[29]. These types of cell death are insensitive to broad-range caspase inhibitors and present an extensive cytoplasmic vacuolization [29, 30]. Paraptosis also involves the activation of MAP kinases and can specifically be blocked by AIP-1/Alix [13]. This last characteristic is, up to now, the only functional evidence that allows this type of cell death to be identified.

### 3.2 TA induces cell death in endothelial cells and neovessels

We have recently shown that TA strongly affects endothelial cell viability when assayed on bovine retinal endothelial cells (BREC) [31]. In these experiments, the percentage of living cells was reduced to almost 50% after exposure to TA for 24 hours at a concentration of 1 mg/ml, which is the concentration normally used in human clinics. The rate of survival was further reduced as exposure time increased. This effect was similar regardless of whether confluent or non-confluent cells were used, suggesting that proliferation is not a major process controlling the size of the

1 studied cell population. However, this does not mean that proliferation is not  
2 affected. Indeed,, the evaluation of the rate of DNA synthesis using BrdU  
3  
4 incorporation revealed a reduced proliferation [31]. However, the effects on  
5  
6 proliferation could not explain the magnitude of cell loss quantitatively. To test the  
7  
8 hypothesis that cell death is contributing to the observed, TA-induced cell loss, we  
9  
10 first measured the amount of free lactate dehydrogenase (LDH) in the culture  
11  
12 medium. This enzyme was used as a marker of passive cell death by necrosis. We  
13  
14 found that necrosis-related LDH release was increased. However, a decrease in the  
15  
16 size of the cell population through the combined decrease of proliferation and  
17  
18 increased necrosis could still not entirely explain the magnitude of the observed cell  
19  
20 loss. Taken together, this evidence suggests that additional mechanism of cell death,  
21  
22 via active pathways, are also involved. Indeed, our experiments showed that these  
23  
24 cells expose phosphatidyl serine on the outer side of the plasma membrane, as  
25  
26 revealed by annexin V binding. However, neither activation of the central caspase of  
27  
28 the classic apoptotic pathway, caspase 3, nor TUNEL labelling (indicating a  
29  
30 degradation of DNA in the nucleus) were seen. These results suggest that the  
31  
32 classic apoptotic pathway of cell death is not activated.  
33  
34  
35  
36  
37  
38  
39  
40

41 The presence of cell death in TUNEL negative cells may be explained by either a  
42  
43 lack of DNA degradation or by a degradation of DNA which can not be labelled with  
44  
45 this technique. This happens for instance when L-DNase II, an enzyme activated by  
46  
47 serine proteases, produces 3'P ends which can not be labelled by the terminal  
48  
49 transferase, enzyme used in TUNEL assays. It is worth noting that terminal  
50  
51 transferase can only add nucleotides to 3'OH ends. Consistently, L-DNase II, an acid  
52  
53 endonuclease, cleaves DNA and releases 3'P ends that can not be labelled by the  
54  
55 TUNEL technique. In our experiments, LEI/L-DNase II was associated with apoptosis  
56  
57  
58  
59  
60  
61  
62  
63  
64  
65

1 of BRECs after 72 h of TA exposure (figure 2). This explains why these cells,  
2 displaying apoptotic morphology and Annexin V staining, but yet remain TUNEL  
3 negative. In addition, as TUNEL is the common technique used to assay the  
4 induction of cell death in a tissue, many dying cells remain unrevealed. In addition to  
5 LEI/L-DNase II-induced cell death where L-DNase II is translocated to the nucleus  
6 upon its activation by serine proteases, AIF is also targeted to the nucleus (fig 2).  
7 Interestingly, it has to be stressed that AIF is translocated to the nucleus only after L-  
8 DNase II. Indeed,, double immunolabelling of these two effectors of apoptosis  
9 showed that cells can display activated L-DNase II without nuclear translocation of  
10 AIF. The opposite was never seen, suggesting that AIF is involved in this cell death  
11 only at later stages.

12 According to these data, activation of a caspase-independent apoptosis-like cell  
13 death is responsible for the death of endothelial cells. Previous studies performed in  
14 our laboratory showed a decrease in neovascularization after treatment with TA in an  
15 induced model of choroidal neovascularization [32]. To induce the growth of  
16 neovessels C57/B6 mice were exposed to an Argon laser at 400mW, a procedure  
17 that burns the retina and destroys the pigmented epithelium in a reduced area  
18 (50 $\mu$ m). 2 weeks after this treatment, the eyes were injected intravitreally with TA.  
19 The effects were evaluated 1 month later. Figure 3 shows a burned retinal area  
20 where, the vessels are labelled with CD31. The neovessels that are growing in a  
21 normally avascular area are shown by an arrow. It can be seen that after TA  
22 treatment the nuclei of the endothelial cells of these vessels are fragmented and  
23 labelled with anti-LDNase II, a feature not seen in control eyes burned but not  
24 treated with TA. This suggests that in vivo TA has the same effect on endothelial cells  
25 as in vitro.

1  
2  
3  
4  
5  
6  
7  
8  
9  
10  
11  
12  
13  
14  
15  
16  
17  
18  
19  
20  
21  
22  
23  
24  
25  
26  
27  
28  
29  
30  
31  
32  
33  
34  
35  
36  
37  
38  
39  
40  
41  
42  
43  
44  
45  
46  
47  
48  
49  
50  
51  
52  
53  
54  
55  
56  
57  
58  
59  
60  
61  
62  
63  
64  
65

Taken together these data indicate that TA relieves neovascularization by decreasing proliferation and inducing caspase-independent cell death of endothelial cells. This represents a potentially beneficial effect in the treatment of neovascularization. The question which remains to be answered is then: is TA safe for the retina?

### 3.3 The retinal toxicity of TA:

In order to investigate the effects of TA on the rat retina, we injected TA into the vitreous of rat eyes [33]. While the control eye, injected with a saline solution, showed no abnormalities (figure 4), the eyes receiving TA showed marked morphological changes 8 days after injection mostly in in RPE (retinal pigmented epithelial cells) cells (figure 4). The photoreceptors outer segments were disorganized but the cell bodies were preserved. The RPE layer was not interrupted but the individual cells were enlarged and presented cytoplasmic vacuoles and increased microvilli, a morphology suggesting a replacement of lost RPE cells by enlargement of the neighbouring cells. These modifications were confirmed by electron microscopy (figure 4). The cells of the RPE were not the only cells modified. Vacuolization within the cytoplasm was also observed in Müller cells. In these cells, the vacuoles were essentially seen in their prolongations at the outer nuclear layer level. These morphological changes suggested a cellular stress but they were not in accordance with an apoptotic cell death. Moreover, immunostaining of cryosections of these retinas with anti-activated caspase 3 and TUNEL assays were negative. No nuclear translocation of L-DNase II or AIF was found suggesting the absence of their activation [33]. In order to explore the effects of TA on these cells, we investigated its actions in vitro in cultured RPE and Müller cells. It is interesting to note that the

1 morphological effects observed in vitro were similar to those seen in vivo. Figure 5  
2 shows the electronic micrography of a cultured RPE cell where the presence of  
3 vacuoles is also induced by TA. In cultured cells TA induced a dose-dependent  
4 reduction in cell viability of both cell types with the loss of about 50% of living cells at  
5 0.1 mg/ml concentration, indicating that TA was highly toxic for these cells. However,  
6 as observed with retinal sections, no TUNEL positive cells could be detected (figure  
7 6). In addition, annexin-V did not bind to cells exposed to TA. Other biochemical  
8 markers of apoptosis, such as activation of caspase-3 and release of cytochrome C  
9 from the mitochondria, were also negative. These data excluded caspase-dependent  
10 apoptosis as a potential mechanism for the observed cell death induced by TA. Two  
11 markers of caspase-independent apoptosis (L-DNase II and AIF) were further  
12 investigated and their activation was also not detected (figure 6). The morphological  
13 modifications observed in these cells are indicative of different types of cell death:  
14 necrosis, autophagy and paraptosis. To investigate the possible involvement of a  
15 passive cell death, i.e. necrosis, we measured the LDH cell release. Only cells  
16 exposed to very high concentrations of TA, inducing the formation of crystals,  
17 triggered necrosis. In the absence of crystals, this type of cell death was not induced.  
18 Autophagic activity was investigated by using both monodansylcadaverine (a  
19 compound staining acidic vesicles) and anti-LC3, an antibody staining mature  
20 autophagic vacuoles [33]. Only some of the vacuoles were stained with  
21 monodansylcadaverine in TA-treated RPE cells. Most importantly, MAP-LC3  
22 labelling was not significantly different in TA treated and control cells, indicating that  
23 autophagy is not activated. We finally, decided to explore the possible involvement of  
24 paraptosis.  
25  
26  
27  
28  
29  
30  
31  
32  
33  
34  
35  
36  
37  
38  
39  
40  
41  
42  
43  
44  
45  
46  
47  
48  
49  
50  
51  
52  
53  
54  
55  
56  
57  
58  
59  
60  
61  
62  
63  
64  
65

1  
2  
3  
4  
5  
6  
7  
8  
9  
10  
11  
12  
13  
14  
15  
16  
17  
18  
19  
20  
21  
22  
23  
24  
25  
26  
27  
28  
29  
30  
31  
32  
33  
34  
35  
36  
37  
38  
39  
40  
41  
42  
43  
44  
45  
46  
47  
48  
49  
50  
51  
52  
53  
54  
55  
56  
57  
58  
59  
60  
61  
62  
63  
64  
65

Several cues were in favour of the activation of paraptosis in TA treated cells: the observed cell death occurs with no DNA condensation, no formation of apoptotic bodies, no caspases activity and no DNA degradation. However, extensive cytoplasmic vacuolization is seen. In order to test this hypothesis, we over-expressed AIP-1/ Alix in these cells. As shown in Figure 7, over-expression of AIP-1/Alix in wild type significantly reduced TA-induced toxicity. This protection is lost if only the C-terminal part of the protein is expressed.

Taken together these data indicate that when exposed to TA, RPE and RMG cells die by paraptosis, a non-classical form of cell death.

#### 4. The use of glucocorticosteroids in the eye revisited

Contradictory observations and discrepancies regarding the clinical safety of intravitreal TA toxicity have been published [34-36], depending mostly on the techniques used to detect toxicity. In the rat eye, using electron microscopy we could detect clear lesions in RPE and in Müller cells 8 days after injection of TA. However, all currently used immunohistochemical markers for apoptosis or autophagy (activated caspase-3, TUNEL assay, and MAP-LCA) are negative. This may explain why other authors previously failed to clearly detect any cell death even when toxicity markers have been observed. Previous in vitro experiments have also shown that direct incubation of cells with crystalline TA induces activation of caspases and stress proteins [37, 38]. This effect was lost when the crystals were separated from the cells by a microporous membrane [39]. However, in these experiments, other potential mechanisms of cell death were not explored. It is interesting to note that this situation does not seem to be exclusive for the retina, but might also explain the “absence” of cell death in various brain regions reported in some neurodegenerative

1 pathologies [40, 41] where, as in the retina, no classical apoptosis markers could be  
2 detected. The involvement of non-classical cell death effectors, similar to that  
3  
4 discussed in this report, should be performed in the relevant paradigms of  
5  
6 neurodegenerative pathologies occurring in the absence of the classical apoptosis.  
7  
8 The cell death induced by TA is related to paraptosis. It is worth noting that  
9  
10 paraptosis takes place during cell differentiation in the development of the nervous  
11  
12 system as well as in some cases of neurodegeneration [42]. This indicates that the  
13  
14 investigation of different cell death mechanisms is critically important in evaluating  
15  
16 the toxicity of a product or even its therapeutic efficacy. This is clearly the case for  
17  
18 the anti-vascular activity of steroids.

19  
20  
21  
22  
23  
24 Glucocorticoids were known from a long time to induce vascular effects. Actually, the  
25  
26 McKenzie test, based on skin bleaching [43, 44], has been used to establish the  
27  
28 classification of glucocorticoid potency and cutaneous absorption. This test uses the  
29  
30 visual quantification of the skin whitening after 8 to 48 h of exposure to different  
31  
32 glucocorticoids applied topically under occlusion. Although this test is widely used,  
33  
34 the exact mechanism of skin whitening remains unknown . The effects of steroids on  
35  
36 growing vessels have been described in a seminal paper by Folkman and Ingber  
37  
38 [45]. These authors showed that dexamethasone or hydrocortisone induces the  
39  
40 regression of neovessels in the chorioallantoid membrane. They have demonstrated  
41  
42 that the vascular action of these drugs is related to their effect on the basal  
43  
44 membrane of growing vessels. Further studies have shown that steroids inhibit the  
45  
46 proliferation of human endothelial cells [46]. In our work we showed a decrease of  
47  
48 proliferation but also an induction of cell death. Here again, classical mechanisms of  
49  
50 cell death, caspases-dependent apoptosis or necrosis, are not activated and the use  
51  
52 of the classical TUNEL technique cannot accurately reveal dying cells. Moreover, TA  
53  
54  
55  
56  
57  
58  
59  
60  
61  
62  
63  
64  
65



1 has also been shown to induce vascular changes, at the level of the choroids [47-49]  
2 in normal eyes. The potential toxic effect of TA on resting versus proliferating  
3 choroidal neovessels is currently under investigation.  
4

5  
6  
7 Glucocorticosteroids are frequently used in a systemic way and injected  
8  
9 intravenously. Our results raise the question of the effect of these bolus injections on  
10 vasculature. Endothelial cell damage has been reported in veins of rabbits treated  
11 with methylprednisolone. This observation is in agreement with the superficial skin  
12 ecchymoses frequently seen after long-term corticotherapy [50]. Also the question of  
13 the effects of corticosteroids on other endothelia of the microcirculation has to be  
14 addressed. In our experiments, we found a relatively selective effect of TA on the  
15 choriocapillaries as compared to the retinal vasculature. In fact, these two types of  
16 capillaries are quite different. Choriocapillary endothelium is fenestrated and much  
17 less protected than retinal capillaries, which are surrounded by pericytes, astrocytes,  
18 and retinal Müller glial cells. Moreover, TA could also exert an indirect effect through  
19 the downregulation of COX2 in RPE cells [31]. This evidence points to the fact that  
20 the results obtained on one type of these two capillaries cannot obviously be  
21 extrapolated to the other one. [The deleterious effects of chronic use of  
22 glucocorticoids have been described in other systems. For instance, the long-term  
23 use of topical steroids on the skin is often accompanied by severe and often  
24 irreversible effects as skin atrophy \[51\]. This is also the case for the muscle, where  
25 the use of glucocorticoids is a common cause of muscle atrophy \[52\]. Whether these  
26 tissues are also suffering cell death by non canonical mechanisms is not know. This  
27 issue is critical in the evaluation of the safe use of theses valuables drugs and will be  
28 matter of a future investigation.](#)  
29  
30  
31  
32  
33  
34  
35  
36  
37  
38  
39  
40  
41  
42  
43  
44  
45  
46  
47  
48  
49  
50  
51  
52  
53  
54  
55  
56  
57  
58  
59  
60  
61  
62  
63  
64  
65

## 5. Conclusion

Our work shows for the first time that glucocorticoids limit neovascularization by inducing cell death in endothelial cells. We also demonstrate a direct retinal toxicity of glucocorticoids. In both cases, the activated cell death mechanism is caspase independent, therefore undetectable when using techniques that detect this form of cell death. Taking into account that caspase-independent cell death may occur without any macroscopic reaction, in the long term, such cell death may remain undetectable in the routine clinical practice and promote deleterious consequences on visual acuity.

## Acknowledgments:

The authors are indebted with Dr. Jean Claude Jeanny , Dr Corine Dot and Mr Laurent Jonet for help in laser treatment of mice, Dr. Elisabeth Martin for correction of the manuscript, Dr. Chelsea Cavanagh and Dr. Slavica Krantic for English revision.

## References

- [1] De Bosscher K, Haegeman G. Minireview: latest perspectives on antiinflammatory actions of glucocorticoids. *Mol Endocrinol* 2009;23:281-91.
- [2] Kiernan DF, Mieler WF. The use of intraocular corticosteroids. *Expert Opin Pharmacother* 2009;10:2511-25.
- [3] Obata R, Iriyama A, Inoue Y, Takahashi H, Tamaki Y, Yanagi Y. Triamcinolone acetonide suppresses early proangiogenic response in retinal pigment epithelial cells after photodynamic therapy in vitro. *Br J Ophthalmol* 2007;91:100-4.
- [4] Jonas JB, Hayler JK, Sofker A, Panda-Jonas S. Intravitreal injection of crystalline cortisone as adjunctive treatment of proliferative diabetic retinopathy. *Am J Ophthalmol* 2001;131:468-71.
- [5] Krebs I, Krepler K, Stolba U, Goll A, Binder S. Retinal angiomatous proliferation: combined therapy of intravitreal triamcinolone acetonide and PDT versus PDT alone. *Graefes Arch Clin Exp Ophthalmol* 2008;246:237-43.
- [6] Fisher CJ, Sawyer RH. The effect of triamcinolone on the development of the bursa of Fabricius in chick embryos. *Teratology* 1980;22:7-12.
- [7] Nowak DG, Amin EM, Rennel ES, Hoareau-Aveilla C, Gammons M, Damodoran G, et al. Regulation of vascular endothelial growth factor (VEGF) splicing from pro-angiogenic to anti-angiogenic isoforms: a novel therapeutic strategy for angiogenesis. *J Biol Chem* 285:5532-40.
- [8] Tombran-Tink J. PEDF in angiogenic eye diseases. *Curr Mol Med* 10:267-78.
- [9] Maberley D. Photodynamic therapy and intravitreal triamcinolone for neovascular age-related macular degeneration: a randomized clinical trial. *Ophthalmology* 2009;116:2149-57 e1.
- [10] Tatar O, Adam A, Shinoda K, Kaiserling E, Boeyden V, Claes C, et al. Early effects of intravitreal triamcinolone acetonide on inflammation and proliferation in human choroidal neovascularization. *Arch Ophthalmol* 2009;127:275-81.
- [11] Kourtis N, Tavernarakis N. Autophagy and cell death in model organisms. *Cell Death Differ* 2009;16:21-30.
- [12] Brenner D, Mak TW. Mitochondrial cell death effectors. *Curr Opin Cell Biol* 2009;21:871-7.
- [13] Sperandio S, Poksay K, de Belle I, Lafuente MJ, Liu B, Nasir J, et al. Paraptosis: mediation by MAP kinases and inhibition by AIP-1/Alix. *Cell Death Differ* 2004;11:1066-75.
- [14] Galluzzi L, Kroemer G. Necroptosis: a specialized pathway of programmed necrosis. *Cell* 2008;135:1161-3.
- [15] Bergsbaken T, Fink SL, Cookson BT. Pyroptosis: host cell death and inflammation. *Nat Rev Microbiol* 2009;7:99-109.
- [16] Tan Y, Wu C, De Veyra T, Greer PA. Ubiquitous calpains promote both apoptosis and survival signals in response to different cell death stimuli. *J Biol Chem* 2006;281:17689-98.
- [17] Broker LE, Huisman C, Span SW, Rodriguez JA, Kruyt FA, Giaccone G. Cathepsin B mediates caspase-independent cell death induced by microtubule stabilizing agents in non-small cell lung cancer cells. *Cancer Res* 2004;64:27-30.
- [18] Emert-Sedlak L, Shangary S, Rabinovitz A, Miranda MB, Delach SM, Johnson DE. Involvement of cathepsin D in chemotherapy-induced cytochrome c release, caspase activation, and cell death. *Mol Cancer Ther* 2005;4:733-42.
- [19] O'Connell AR, Holohan C, Torriglia A, Lee BW, Stenson-Cox C. Characterization of a serine protease-mediated cell death program activated in human leukemia cells. *Exp Cell Res* 2006;312:27-39.

- 1 [20] Stenson-Cox C, FitzGerald U, Samali A. In the cut and thrust of apoptosis, serine  
2 proteases come of age. *Biochem Pharmacol* 2003;66:1469-74.
- 3 [21] Artus C, Maquarre E, Moubarak RS, Delettre C, Jasmin C, Susin SA, et al. CD44  
4 ligation induces caspase-independent cell death via a novel calpain/AIF pathway in  
5 human erythroleukemia cells. *Oncogene* 2006;25:5741-51.
- 6 [22] Torriglia A, Lepretre C. LEI/L-DNase II: interplay between caspase-dependent and  
7 independent pathways. *Front Biosci* 2009;14:4836-47.
- 8 [23] Torriglia A, Lepretre C, Padron-Barthe L, Chahory S, Martin E. Molecular mechanism  
9 of L-DNase II activation and function as a molecular switch in apoptosis. *Biochem  
10 Pharmacol* 2008;76:1490-502.
- 11 [24] Tachibana K, Kitanaka C. [Autophagy and autophagic cell death]. *Tanpakushitsu  
12 Kakusan Koso* 2006;51:1519-24.
- 13 [25] Tsujimoto Y, Shimizu S. Another way to die: autophagic programmed cell death. *Cell  
14 Death Differ* 2005;12 Suppl 2:1528-34.
- 15 [26] Bredesen DE. Key note lecture: toward a mechanistic taxonomy for cell death  
16 programs. *Stroke* 2007;38:652-60.
- 17 [27] Bredesen DE. Programmed cell death mechanisms in neurological disease. *Curr Mol  
18 Med* 2008;8:173-86.
- 19 [28] Rao RV, Poksay KS, Castro-Obregon S, Schilling B, Row RH, del Rio G, et al.  
20 Molecular components of a cell death pathway activated by endoplasmic reticulum  
21 stress. *J Biol Chem* 2004;279:177-87.
- 22 [29] Castro-Obregon S, Del Rio G, Chen SF, Swanson RA, Frankowski H, Rao RV, et al. A  
23 ligand-receptor pair that triggers a non-apoptotic form of programmed cell death. *Cell  
24 Death Differ* 2002;9:807-17.
- 25 [30] Sperandio S, de Belle I, Bredesen DE. An alternative, nonapoptotic form of  
26 programmed cell death. *Proc Natl Acad Sci U S A* 2000;97:14376-81.
- 27 [31] Valamanesh F, Berdugo M, Sennlaub F, Savoldelli M, Goumeaux C, Houssier M, et al.  
28 Effects of triamcinolone acetonide on vessels of the posterior segment of the eye. *Mol  
29 Vis* 2009;15:2634-48.
- 30 [32] Dot C, Parier V, Behar-Cohen F, Benezra D, Jonet L, Goldenberg B, et al. Influence of  
31 age on retinochoroidal healing processes after argon photocoagulation in C57bl/6j  
32 mice. *Mol Vis* 2009;15:670-84.
- 33 [33] Valamanesh F, Torriglia A, Savoldelli M, Gandolphe C, Jeanny JC, BenEzra D, et al.  
34 Glucocorticoids induce retinal toxicity through mechanisms mainly associated with  
35 paraptosis. *Mol Vis* 2007;13:1746-57.
- 36 [34] Araiz Iribarren J. [Intravitreal triamcinolone]. *Arch Soc Esp Oftalmol* 2004;79:583-5.
- 37 [35] Carvounis PE, Abd-El-Barr MM, Albini TA, Holz ER. Effects of intravitreal injection of  
38 preserved and non-preserved triamcinolone in rabbit retina. *Arch Ophthalmol*  
39 2006;124:1666; author reply -8.
- 40 [36] Kozak I, Cheng L, Falkenstein I, Tammewar AM, Freeman WR. Evaluation of  
41 subretinal triamcinolone acetonide in patients with exudative age-related macular  
42 degeneration. *J Ocul Pharmacol Ther* 2007;23:46-53.
- 43 [37] Schlichtenbrede FC, Mittmann W, Rensch F, Vom Hagen F, Jonas JB, Euler T.  
44 Toxicity assessment of intravitreal triamcinolone and bevacizumab in a retinal explant  
45 mouse model using two-photon microscopy. *Invest Ophthalmol Vis Sci* 2009;50:5880-  
46 7.
- 47 [38] Yeung CK, Chan KP, Chiang SW, Pang CP, Lam DS. The toxic and stress responses  
48 of cultured human retinal pigment epithelium (ARPE19) and human glial cells (SVG) in  
49 the presence of triamcinolone. *Invest Ophthalmol Vis Sci* 2003;44:5293-300.
- 50 [39] Szurman P, Kaczmarek R, Spitzer MS, Jaissle GB, Decker P, Grisanti S, et al.  
51 Differential toxic effect of dissolved triamcinolone and its crystalline deposits on  
52 cultured human retinal pigment epithelium (ARPE19) cells. *Exp Eye Res* 2006;83:584-  
53 92.
- 54  
55  
56  
57  
58  
59  
60  
61  
62  
63  
64  
65

- 1 [40] Chen X, Zhang KL, Yang SY, Dong JF, Zhang JN. Glucocorticoids aggravate  
2 retrograde memory deficiency associated with traumatic brain injury in rats. *J*  
3 *Neurotrauma* 2009;26:253-60.
- 4 [41] Fukumoto K, Morita T, Mayanagi T, Tanokashira D, Yoshida T, Sakai A, et al.  
5 Detrimental effects of glucocorticoids on neuronal migration during brain development.  
6 *Mol Psychiatry* 2009;14:1119-31.
- 7 [42] Fombonne J, Padron L, Enjalbert A, Krantic S, Torriglia A. A novel paraptosis pathway  
8 involving LEI/L-DNaseII for EGF-induced cell death in somato-lactotrope pituitary cells.  
9 *Apoptosis* 2006;11:367-75.
- 10 [43] Bucks DA, Maibach HI, Guy RH. Percutaneous absorption of steroids: effect of  
11 repeated application. *J Pharm Sci* 1985;74:1337-9.
- 12 [44] Stuttgart G. [Letter: Percutaneous absorption of steroids]. *Dtsch Med Wochenschr*  
13 1974;99:1944.
- 14 [45] Folkman J, Ingber DE. Angiostatic steroids. Method of discovery and mechanism of  
15 action. *Ann Surg* 1987;206:374-83.
- 16 [46] Cariou R, Harousseau JL, Tobelem G. Inhibition of human endothelial cell proliferation  
17 by heparin and steroids. *Cell Biol Int Rep* 1988;12:1037-47.
- 18 [47] Hirata A, Kubo M, Okinami S. Severe retinal atrophy due to retinal and choroidal  
19 vascular occlusion following triamcinolone injection into the nasal mucosa. *Jpn J*  
20 *Ophthalmol* 2008;52:510-1.
- 21 [48] Penfold PL, Wen L, Madigan MC, King NJ, Provis JM. Modulation of permeability and  
22 adhesion molecule expression by human choroidal endothelial cells. *Invest Ophthalmol*  
23 *Vis Sci* 2002;43:3125-30.
- 24 [49] Wang YS, Friedrichs U, Eichler W, Hoffmann S, Wiedemann P. Inhibitory effects of  
25 triamcinolone acetonide on bFGF-induced migration and tube formation in choroidal  
26 microvascular endothelial cells. *Graefes Arch Clin Exp Ophthalmol* 2002;240:42-8.
- 27 [50] Allen DB, Bielory L, Derendorf H, Dluhy R, Colice GL, Szeffler SJ. Inhaled  
28 corticosteroids: past lessons and future issues. *J Allergy Clin Immunol* 2003;112:S1-  
29 40.
- 30 [51] Schoepe S, Schacke H, May E, Asadullah K. Glucocorticoid therapy-induced skin  
31 atrophy. *Exp Dermatol* 2006;15:406-20.
- 32 [52] Schakman O, Gilson H, Thissen JP. Mechanisms of glucocorticoid-induced myopathy.  
33 *J Endocrinol* 2008;197:1-10.
- 34  
35  
36  
37  
38  
39  
40  
41  
42  
43  
44  
45  
46  
47  
48  
49  
50  
51  
52  
53  
54  
55  
56  
57  
58  
59  
60  
61  
62  
63  
64  
65

Captions to figures:

1  
2  
3  
4  
5  
6  
7  
8  
9  
10  
11  
12  
13  
14  
15  
16  
17  
18  
19  
20  
21  
22  
23  
24  
25  
26  
27  
28  
29  
30  
31  
32  
33  
34  
35  
36  
37  
38  
39  
40  
41  
42  
43  
44  
45  
46  
47  
48  
49  
50  
51  
52  
53  
54  
55  
56  
57  
58  
59  
60  
61  
62  
63  
64  
65

Figure 1 : Anatomy of the retina and macular edema : Panel A: Cross section of a rat retina stained with Toluidine Blue. The different cellular layers of the retina are shown: GCL: ganglion cell layer, INL: Inner nuclear layer, which contains the bodies of bipolar cells, Müller cells and intermediate cells. ONL: outer nuclear layer, containing the photoreceptor cell bodies, RPE: retinal pigmented epithelium cells. RIS: Rod inner segments, ROS: Rod outer segments. Panel B: Fovea and macula. The upper panel shows an eye fundus. On the left there is the optic nerve (ON) and the normal retinal vascularization. In the a darker, avascular, area can be seen: the macula. In the center of this area a depression is found: the fovea, the region of highest visual acuity. The lower panel shows a cross section of the fovea. The different cell layers are pushed to the side and the photoreceptors are directly exposed to light. Panel C: Optical coherence tomography (OCT) scan of a diabetic patient before triamcinolone acetonide (TA) injection and in panel **D**, 1 week after TA administration. Printed with permission from **Miyamoto** et al Ophthalmology Volume 113, Issue 11, November 2006, Pages 2048-2053. Elsevier Copyright 2006

Figure 2 : AIF and L-DNase II activation in TA treated BRECs.

Right panel: Apoptosis inducing factor (AIF) immuno-labeling was performed in control cells treated with the TA vehicle (1% ethanol), where cytoplasmic labeling can be seen. This is also the case in cells treated with 0.1 mg/ml TA for 3 days. After 5 days of TA treatment, cells with condensed nuclei (arrows) show nuclear staining for AIF. Nuclei were identified by DAPI staining. Left panel: L-DNase II activation in TA treated BRECs. LEI/L-DNase II immuno-labeling was performed in control cells as

1 before and cytoplasmic labelling is seen. Cells treated with 0.1 mg/ml TA for 3 or 5  
2 days have condensed nuclei (arrows) and present nuclear staining of LEI/L-DNase II,  
3  
4 indicating L-DNase II activation. Reproduced with permission from Molecular Vision  
5  
6  
7 2009; 15:2634-2648.  
8  
9

10  
11 Figure 3 : TA effects on neovessels in vivo : 10-12 week old C57/bk6 mice were  
12  
13 treated with an argon laser of 50 $\mu$ , 400mW, 0.05 sec (burning rate 0.40. 2 weeks after  
14  
15 burning), 15 $\mu$ g of TA was injected in the eye (panels A to F) or a saline solution was  
16  
17 used for control animals (panels G to J). Mice were sacrificed using CO<sub>2</sub> 1 month  
18  
19 later. The eyes were cryosectionned and immunostained with DAPI (panel A and G) to  
20  
21 identify nuclei, anti-LEI/L-DNase II (panel B and H) and anti CD31 (panel C and I),  
22  
23 which identifies endothelial cells. Panel D and J depict the merged images.  
24  
25 Neovessels are present in the outer nuclear layer, a zone that is normally avascular  
26  
27 (white arrows on panel C and I). Panel E and F are higher magnifications of the red  
28  
29 square areas. The chromatin in the endothelial cells is disrupted and a clear nuclear  
30  
31 labelling of L-DNase II is seen. Scale bar represents 50 $\mu$ m.  
32  
33  
34  
35  
36  
37  
38  
39  
40

41 Figure 4: Structural alterations of the rat retina 8 days after intravitreal injection of  
42  
43 TA. A: Retina from a PBS-treated rat (control). B: Retina from TA-injected eyes. Black  
44  
45 arrows show vacuoles and enlarged retinal pigment epithelium (RPE) cells. Scale bar  
46  
47 represents 10 $\mu$ m. Lower panels are ultrathin sections. D: Retina from a PBS-treated  
48  
49 rat (control). E: Retina from TA-injected eyes. Panels C and F are higher  
50  
51 magnifications of degraded mitochondria ( F arrows). C: Vacuoles (arrows) are also  
52  
53 observed in retina glial Müller cells prolongations. Note preservation of photoreceptor  
54  
55 nuclei. ROS indicates rod outer segments, RIS indicates inner segments. RPE  
56  
57  
58  
59  
60  
61  
62  
63  
64  
65

1 indicates retinal pigmented epithelial cells. Reproduced with permission from  
2 Molecular Vision **2007; 13:1746-57.**  
3  
4  
5

6  
7 **Figure 5:** Transmission electron microscopy observations of TA-treated ARPE 19  
8 cells. **A:** Control ARPE 19 cells. **B** and **C:** ARPE-19 cells TA-treated with 0.1 mg/ml  
9 (**B**) and 1 mg/ml TA (**C**), showing membrane limited (arrows) or unlimited vesicles and  
10 dilated endoplasmic reticulum (arrowhead). In panel **C**, a more advanced stage of  
11 degeneration is represented. Reproduced with permission from Molecular Vision  
12 **2007; 13:1746-57.**  
13  
14  
15  
16  
17  
18  
19  
20  
21  
22  
23

24 Figure 6. The cell death activated in ARPE19 is caspase-independent. A:  
25 Subconfluent ARPE 19 cells were incubated for 72 h in the presence 0.1 mg/ml  
26 triamcinolone. Protein extracts were separated in 4-10% PAGE, transferred to  
27 nitrocellulose and revealed with anti-caspase 3. No activation of caspase 3 is seen in  
28 TA-treated cells. Apoptosis induced in HL-60 with etoposide (50  $\mu$ M for 24 h) was  
29 used as positive control. B: Triamcinolone-treated or control ARPE 19 cells were  
30 stained with DAPI or immunostained with anti-AIF (red) or anti LEI/L-DNase II (green).  
31 No nuclear translocation of these apoptosis markers was seen, neither in cells with  
32 normal morphology, nor in cells with an altered nuclear morphology . Reproduced with  
33 permission from Molecular Vision 2007; 13:1746-57.  
34  
35  
36  
37  
38  
39  
40  
41  
42  
43  
44  
45  
46  
47  
48  
49  
50  
51  
52

53 Figure 7: Paraptosis in TA treated-ARPE-19 cells. A: Effect of Alix overexpression on  
54 TA induced cell death. ARPE 19 cells were nucleofected with Alix-WT or with its C-  
55 terminal moiety. Controls were run with untransfected cells or in cells transfected with  
56  
57  
58  
59  
60  
61  
62  
63  
64  
65



1 the PCI empty vector. 48 h after transfection cells were treated with TA and cell  
2 survival was measured with the 3-(4,5-dimethylthiazol-2-yl)-2,5 phenyltetrazolium  
3 bromide test method. Alix-CT has no effect on cell survival but Alix-WT protects cells  
4 form death. \* indicates a  $p < 0.05$  . Reproduced with permission from Molecular Vision  
5  
6  
7  
8  
9  
10 2007; 13:1746-57.

Accepted Manuscript

Accepted Manuscript

1  
2  
3  
4  
5  
6  
7  
8  
9  
10  
11  
12  
13  
14  
15  
16  
17  
18  
19  
20  
21  
22  
23  
24  
25  
26  
27  
28  
29  
30  
31  
32  
33  
34  
35  
36  
37  
38  
39  
40  
41  
42  
43  
44  
45  
46  
47  
48  
49

**Table 1 : Retinal toxicity of TA In vivo**

IVT= intravitreal administration, ERG = electroretinogramme, OCT = optical coherence tomography

	<b>Experimental settings</b>	<b>Injection</b>	<b>length</b>	<b>Analysis</b>	<b>Results and conclusions</b>
McCuen et al. 1981[50]	IVT rabbit eye fundus intraocular pressure Histology	TA1mg/NaCl	3 months	Slit lamp optical and electronic microscopy ERG	No toxicity
Hida et al. 1986 [40]	IVT rabbit eye fundus Histology	Vehicles of Kenacort	2 weeks	Slit lamp optical microscopy	Benzyl alcohol toxicity
Kilvilcim et al. 2000 [51]	IVT rabbit ( after vitrectomy	1, 2 ou 4 mg TA	140 days	Slit lamp optical and electronic	No toxicity

	+silicone) eye fundus Histology	orKenakort		microscopy ERG	
Dierks et al. 2005[52]	IVT rabbit eye fundus Histology	4 mg whole Kenacort or w/o vehicles Vehicles alone	7 days	Slit lamp optical microscopy ERG	No toxicity
Kai et al. 2006[53]	IVT rabbit intraocular pressure Histology	4 or 25 mg whole Kenacort or w/o vehicle	2 months	optical and electronic microscopy ERG	Increase in intraocular pressure Decrease of ERG Toxicity of vehicle but not TA
deKozak et al. 2006[54]	Subretinal injection rabbit Histology	2 mg Kenacort w/o vehicle	3 months	optical and electronic microscopy ERG OCT	Toxic for the RPE and outer rod segments of photoreceptors Crystals of TA toxic for the retina

YU et al. 2006[55]	IVT rabbit Histology	0,5, 1, 4, 8 and 20 mg whole Kenacort or vehicles alone	14 days	optical and electronic microscopy ERG	Toxic for the RPE and outer rod segments of photoreceptors above 4mg vehicles not toxics
Morrison et al. 2006[56]	IVT rabbit Histology	0.022,0.073, 0.222 and 0.733% in benzyl alcool	14 days	optical and electronic microscopy ERG	Toxic for the RPE and outer rod segments of photoreceptors above 0.073
Lang et al. 2007[57]	IVT rabbit eye fundus Histology	4 mg whole Kenacort or vehicles alone	6 weeks	optical microscopy ERG	Retinal toxicity due to vehicles
Albini et al. 2007[58]	IVT rabbit	4 mg ken complet	17 weeks	optical and electronic microscopy	No toxicity

				Histology ERG	
Ruiz-Moreno et al. 2007[59]	IVT rabbit Histologie immunohistochimie	4, 20 whole Kenacort	28 weeks	optical and electronic microscopy ERG	No toxicity
Macky et al. 2007[60]	IVT/œil Lapin eye fundus Histologie	0.1 ml vehicles of Kenacort	6 weeks	optical and electronic microscopy ERG	Toxic for all the layers of the retina
Ruiz-Moreno et al. 2007[61]	IVT rabbit Histology	4, 20 or 30 mg TA Benzyl alcool	28 days	optical and electronic microscopy ERG immunohistochemistry	No toxicity
Yi et al. 2008[62]	IVT horse eye fundus Histology	10, 20 or 40 mg TA	7 or 21 days	Biomicroscope ERG slit lamp	No toxicity

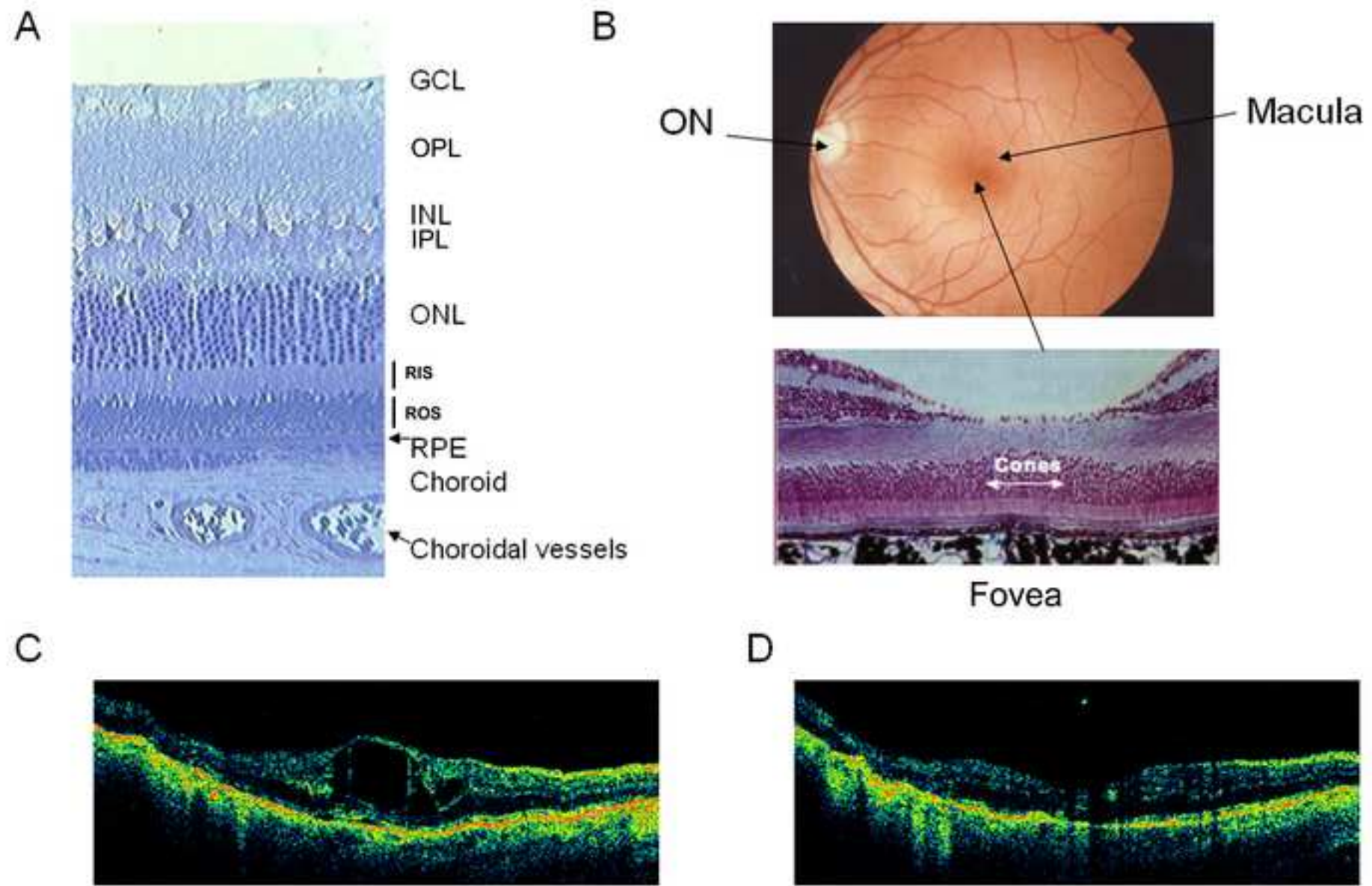


Figure 1

USCRIPT

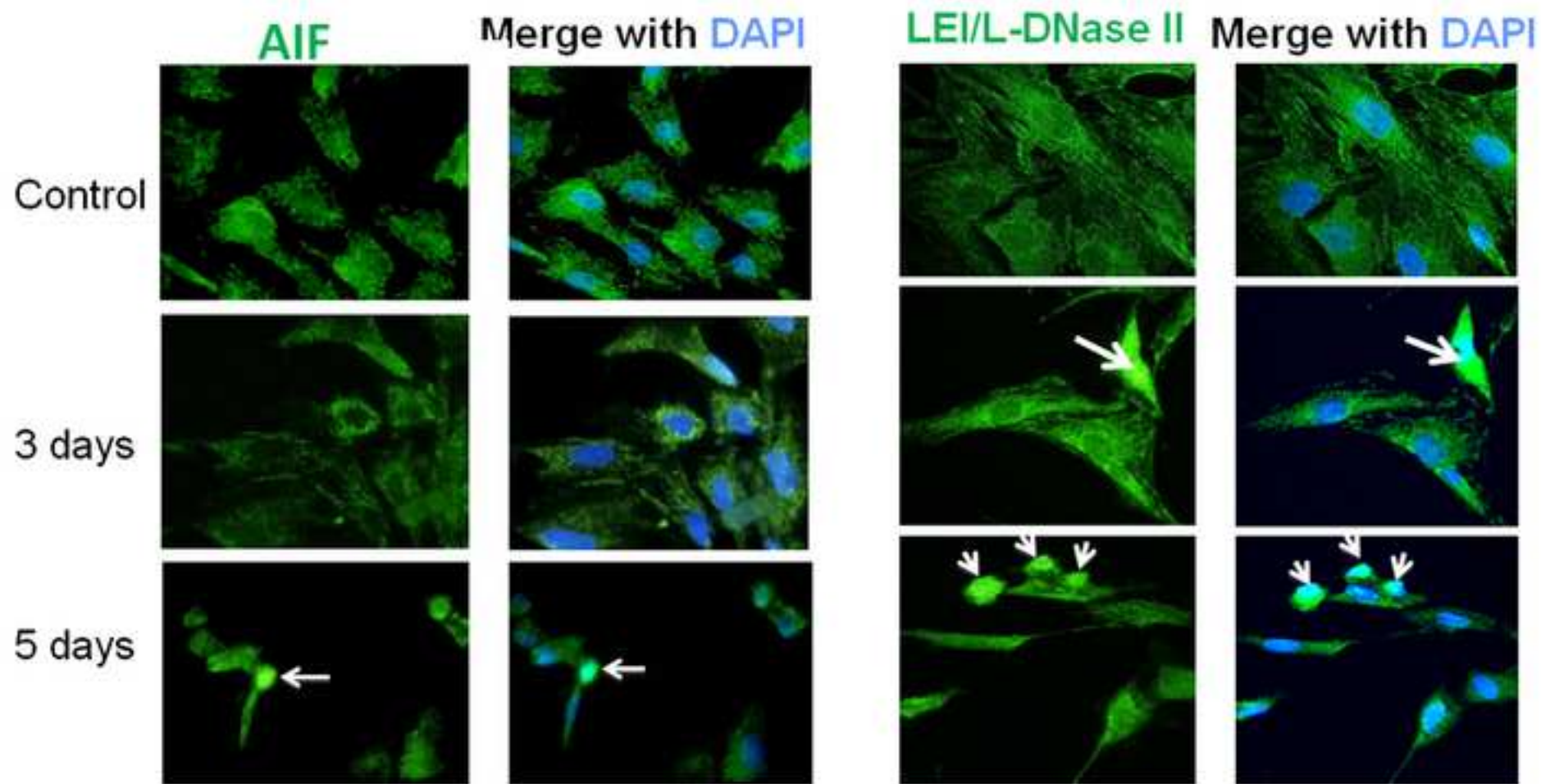


fig 2



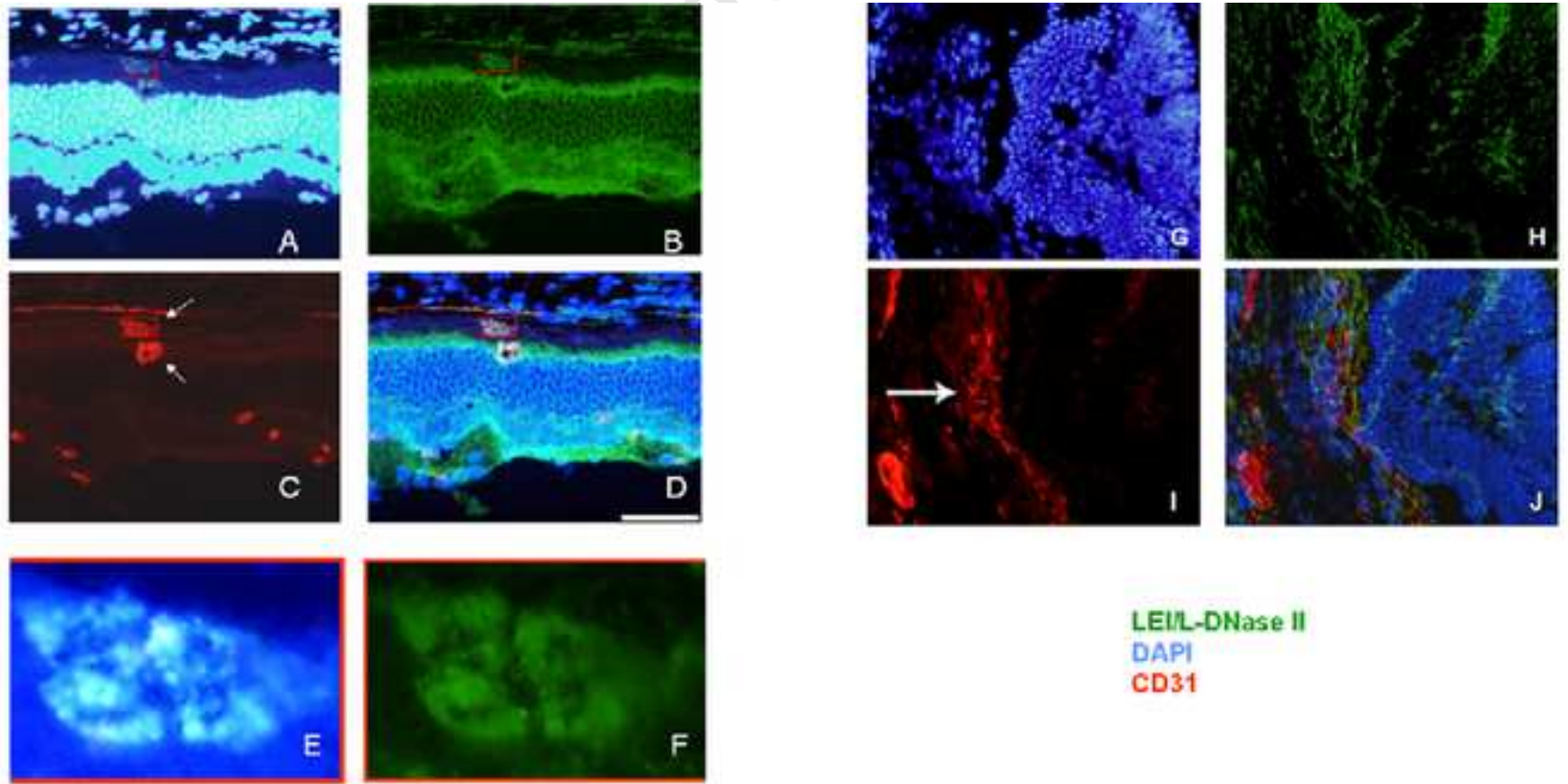


Fig 3

control 8 d

TA 40  $\mu$ g 8 d

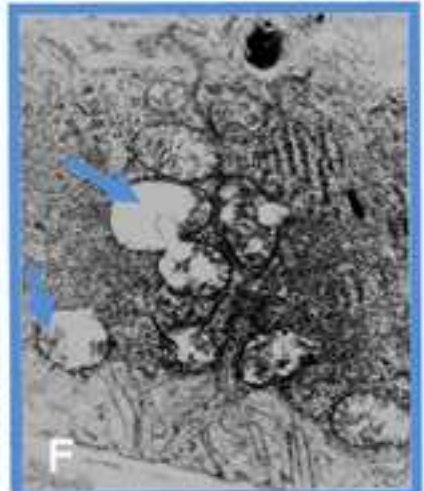
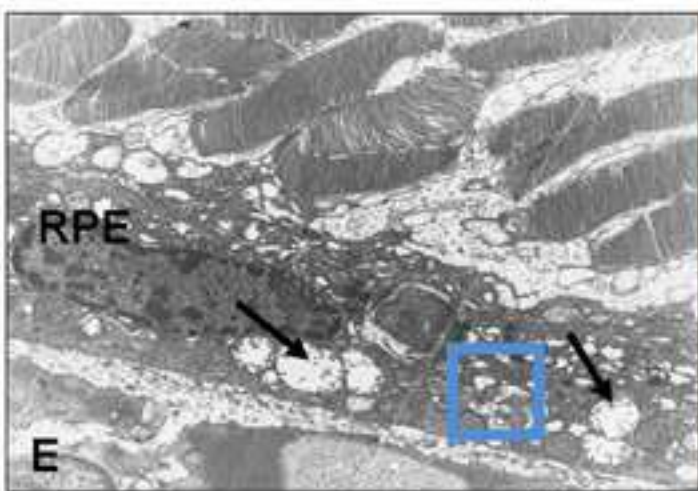
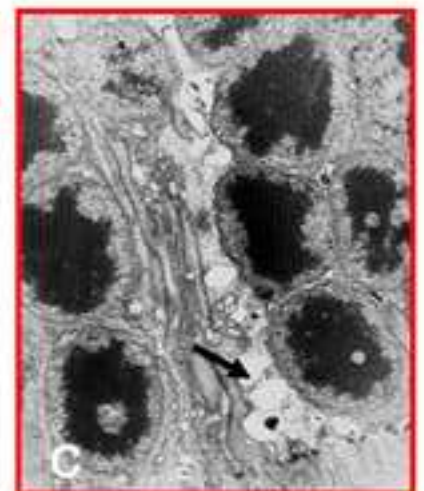
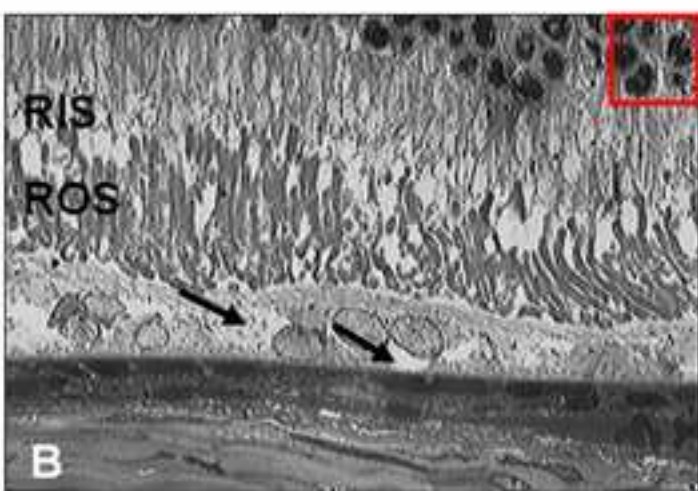
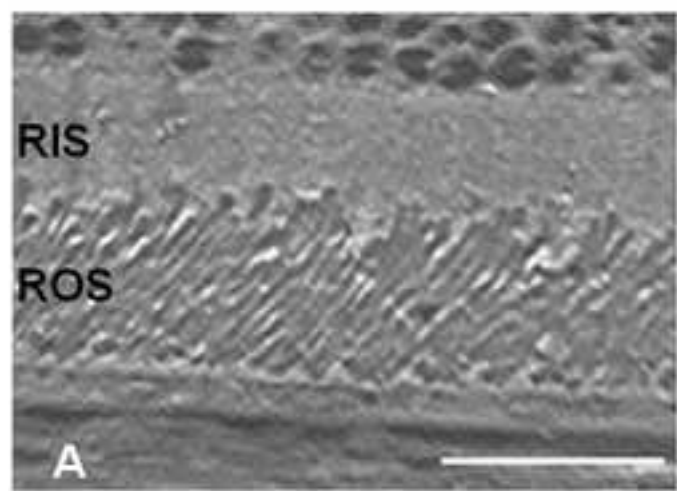


fig 4

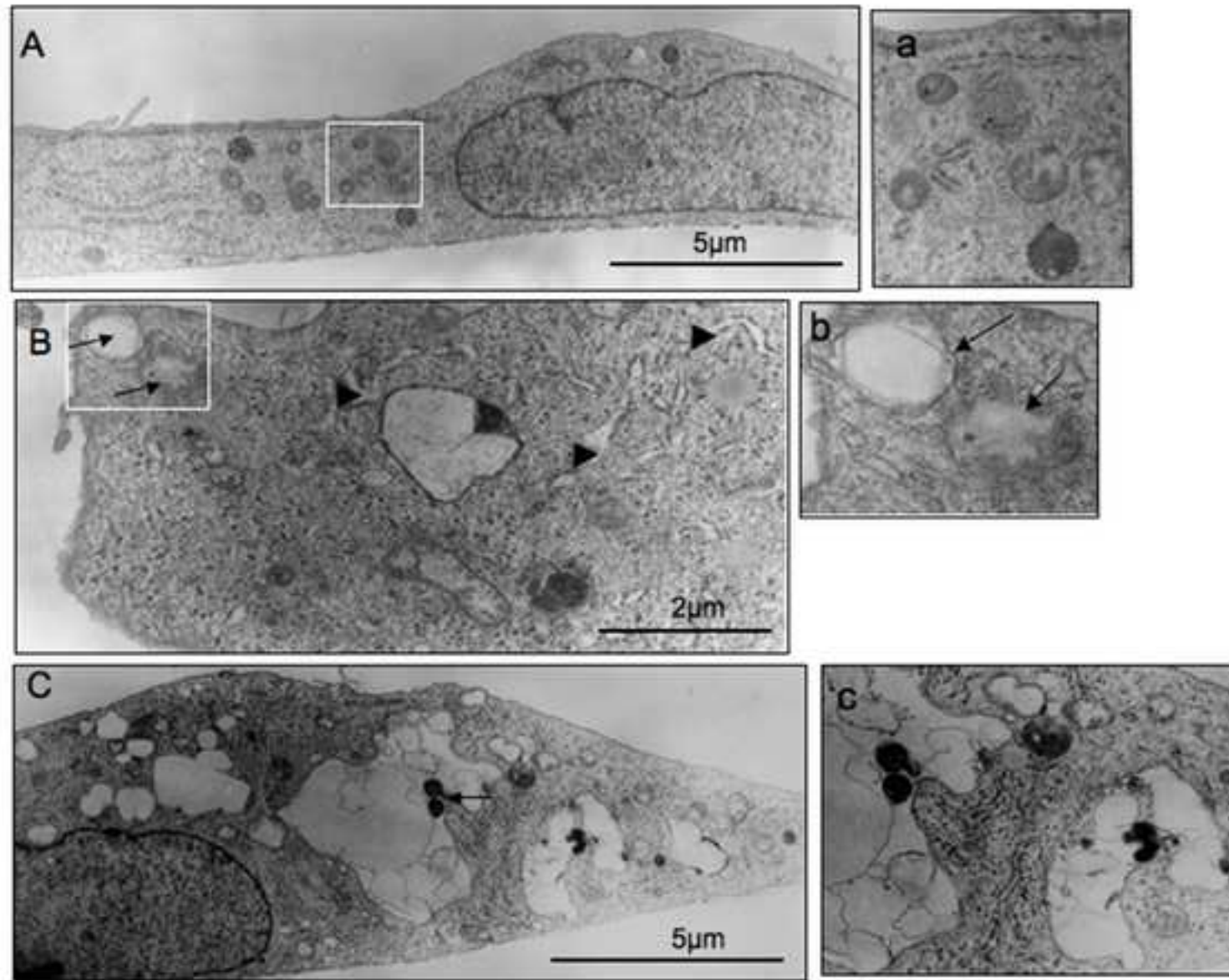
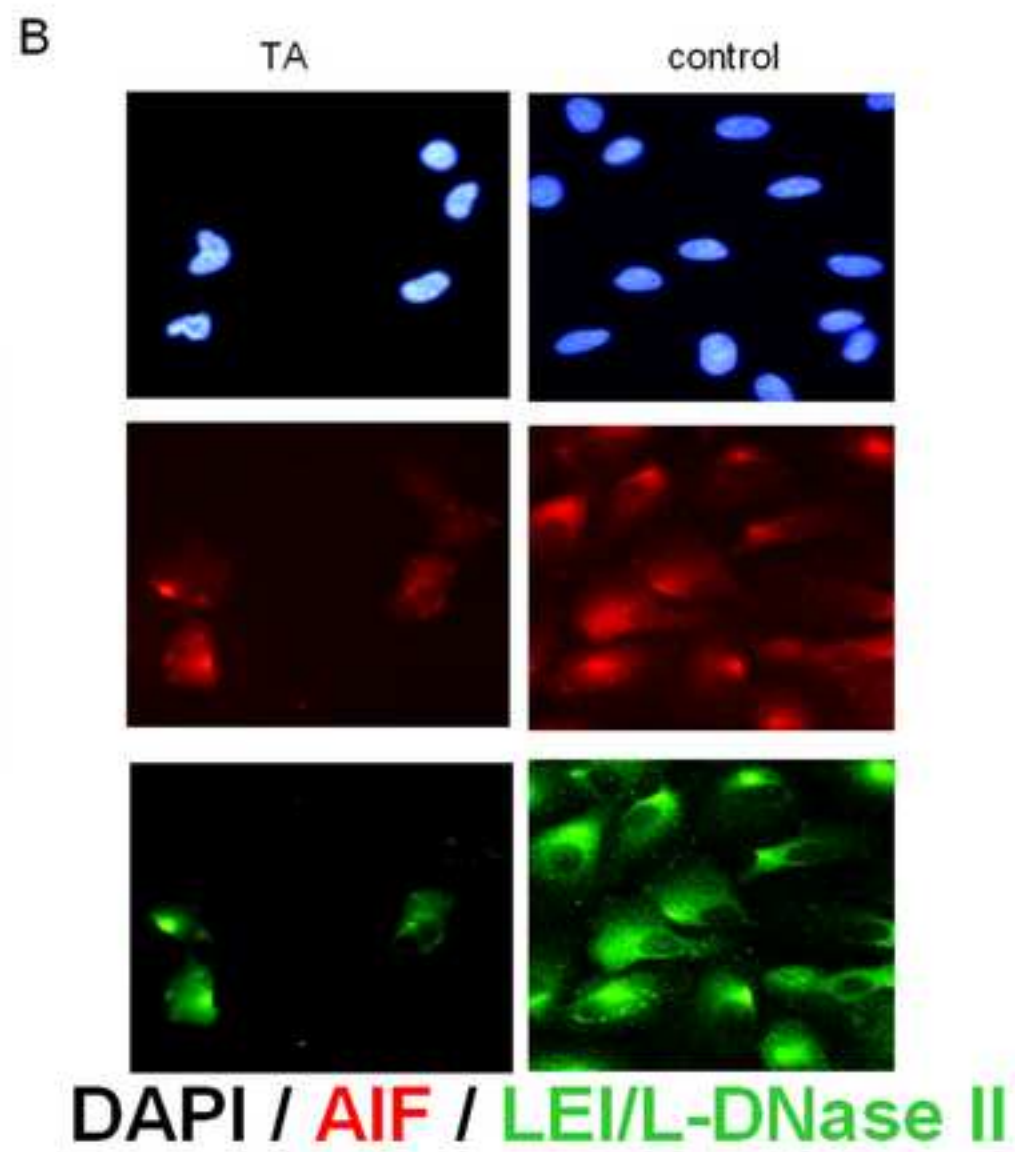
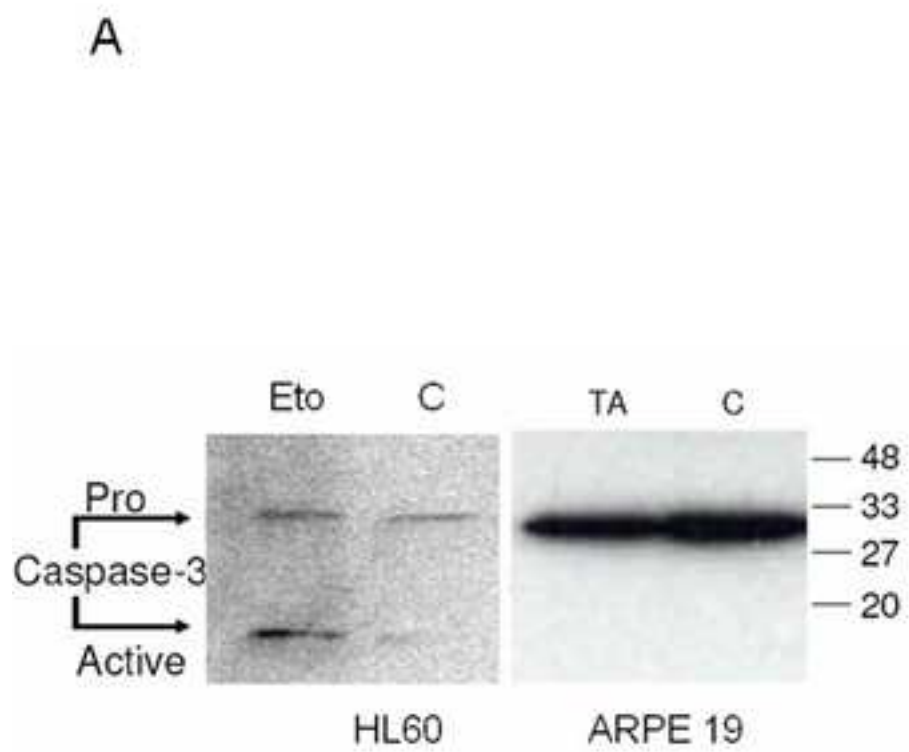


Figure 5



**Fig 6**

Manuscript

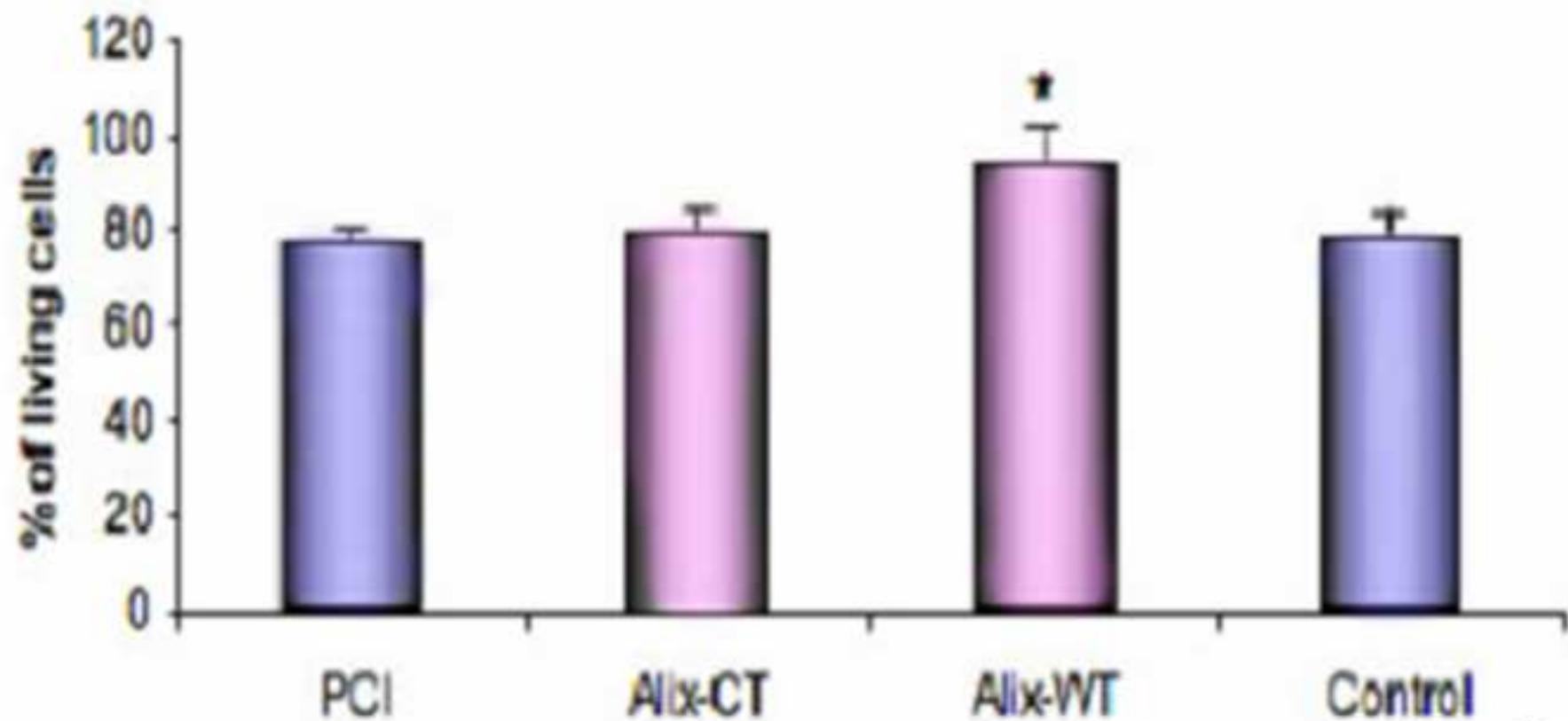
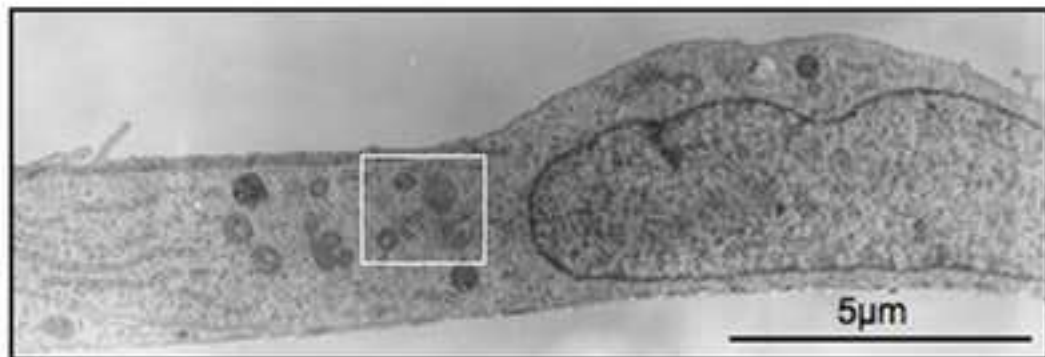
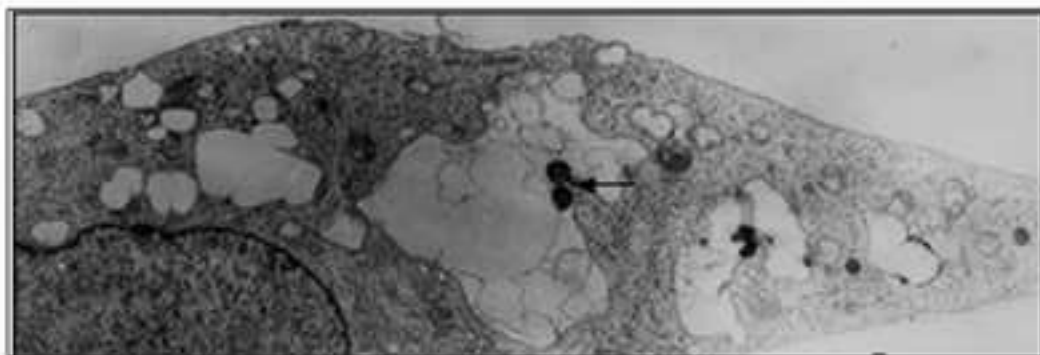


Fig 7

scrip



↓  
TA



Human pigmented epithelial cell before and after exposure to triamcinolone acetonide.