

Title: Elevated frequencies of leukemic myeloid and plasmacytoid dendritic cells in acute myeloid leukemia with the FLT3 internal tandem duplication

Running Head: mDC and pDC in FLT3/ITD AML

Mareike Rickmann¹, Juergen Krauter¹, Kathrin Stamer¹, Michael Heuser¹, Gustavo Salguero¹, Eva Mischak-Weissinger¹, Arnold Ganser¹, Renata Stripecke¹

¹ Dept. of Hematology, Hemostasis, Oncology and Stem Cell Transplantation, Hannover Medical School (MHH)

Corresponding Author:

Name: Renata Stripecke
Address: Lymphatic Cell Therapy Laboratory
Hannover Medical School - OE6860
Carl-Neuberg Str. 1
30625 Hannover
Mail: stripecke.renata@mh-hannover.de
Phone: 0049-(0)511 532-6999
Fax: 0049-(0)511 532-6975

Main Manuscript

Text: 19 pages

Figures: 7

Tables: 3

Total : 29 pages

Abstract

30% of acute myeloid leukemia (AML) patients display an internal tandem duplication (ITD) mutation in the FMS-like tyrosine kinase 3 (FLT3) gene. FLT3-ITDs are known to drive hematopoietic stem cells towards FLT3 ligand independent growth, but the effects on dendritic cell (DC) differentiation during leukemogenesis are not clear. We compared the frequency of cells with immunophenotype of myeloid DC (mDC: Lin⁻, HLA-DR⁺, CD11c⁺, CD86⁺) and plasmacytoid DC (pDC: Lin⁻, HLA-DR⁺, CD123⁺, CD86⁺) in diagnostic samples of 47 FLT3-ITD⁻ and 40 FLT3-ITD⁺ AML patients. The majority of ITD⁺ AML samples showed high frequencies of mDCs or pDCs, with significantly decreased HLA-DR expression compared with DCs detectable in ITD⁻ AML samples. Interestingly, mDCs and pDCs sorted out from ITD⁺ AML samples contained the ITD insert revealing their leukemic origin and, upon *ex vivo* culture with cytokines, they acquired DC morphology. Notably, mDC/ pDCs were detectable concurrently with single lineage mDCs and pDCs in all ITD⁺ AML (n=11) and ITD⁻ AML (n=12) samples analyzed for mixed lineage DCs (Lin⁻, HLA-DR⁺, CD11c⁺, CD123⁺). ITD⁺ AML mDCs/ pDCs could be only partially activated with CD40L and CpG for production of IFN- α , TNF- α and IL-1 α , which may affect the anti-leukemia immune surveillance in the course of disease progression.

Keywords: acute myeloid leukemia; dendritic cells; Flt3 - ITD (FMS-like tyrosine kinase - internal tandem duplication)

Introduction

Dendritic cells (DCs) are professional antigen-presenting-cells (APCs) derived from bone-marrow precursors. DCs internalize and process antigens for presentation to T and B cells in the lymphatic tissue for induction of adaptive cellular and humoral responses. There are two major subpopulations of DCs in the human peripheral blood, CD11c⁺CD123⁻ (mDC, also known as myeloid DC or DC1) and CD11c⁻CD123⁺ DC (known as plasmacytoid DC, pDC, or also DC2). DCs occur in very low frequency in the peripheral blood of both humans and mice (<1%)[1], and the homeostatic mechanism regulating DC frequency has not been fully elucidated. It is established that DC progenitors require factors such as granulocyte-macrophage colony stimulating factor (GM-CSF: mDC) and FMS-like tyrosine kinase 3 ligand (FL: mDC, pDC) to expand and differentiate. [2-3] FL is proposed to be a key regulator of the DC compartment as it is expressed on early hematopoietic stem and progenitor cells, particularly DC precursors.[4-5] Therefore, exposure of myeloid and lymphoid committed precursors to soluble FL can dramatically increase mDC and pDC frequencies in mice and humans.[6,4]

FLT3, the cognate FL receptor, is a frequent target for mutations in leukemia. An internal tandem duplication (ITD) mutation within FLT3 is found in approximately 30% of acute myeloid leukemia (AML) cases with normal cytogenetics. The leukemic population is commonly monoclonal and its occurrence is linked with a particularly poor prognosis and increased incidence of relapse. [7,2,8-10] A hallmark of FLT3-ITD⁺ AML blasts is a constitutive activation of the tyrosine kinase, leading to prolonged survival and promoted proliferation of hematopoietic stem/progenitor cells (independent of FL), as well as a partially blocked differentiation along the granulocytic/monocytic lineages. [2,7,5,11] FLT3-ITD seems to be preferentially associated with

myelomonocytic and monocytic leukemia (M4, M5). [12] Although some DC markers have been detected in FLT3-ITD⁺ AML cells (HLA-DR, CD123, CD4) [9], the association of FLT3-ITD⁺ with abnormal frequencies of mDCs or pDCs has not been described previously in humans. Attempts to generate AML-DCs using *in vitro* culture systems with cytokines have previously indicated that FLT3-ITD would hamper the differentiation of AML blasts towards dendritic cells [13], but these studies did not specifically address the presence of ITD⁺ AML-DCs in the original diagnostic samples. Incidentally, results obtained from murine bone marrow transplantation assays demonstrated that a knock-in of an ITD into murine FLT3 conferred myeloproliferative disease with increment in the frequency of circulating and spleen mDCs (CD11c⁺, CD86⁺).[14]

Since the characterization of DC frequencies in clinical ITD⁺ AML samples were not described before, we examined whether the presence of the FLT3-ITD mutation in diagnostic peripheral blood samples obtained from AML patients would affect the occurrence of mDCs and pDCs. Samples obtained from healthy donors and ITD⁻ AML patients were used as a comparative parameter. Here, we demonstrate that at leukemia presentation, FLT3-ITD⁺ AML patients and FLT3-ITD⁻ AML patients have a conspicuously high frequency of circulating mDCs, pDCs and also mixed lineage mDCs/ pDCs. Mixed lineage mDCs/ pDCs detected in FLT3-ITD⁺ AML samples could only be partially activated *in vitro* to produce inflammatory cytokines.

Materials and Methods

Patient Samples

Collection of peripheral blood samples from healthy volunteers (n=10) and AML patients was approved by the local ethics committee of the Hannover Medical School (MHH) and were obtained after informed consent. A total of 40 FLT3-ITD⁺ and 47 FLT3-ITD⁻ AML patients were included in the study (**Table 1**). Due to limitations on the number of viable cells present in

diagnostic leukemia samples required for more complex flow cytometry analyses (detection of mixed lineage DCs and analyses of cytokine production), an additional second cohort was included in the study, corresponding to eleven FLT3-ITD⁺ patients and twelve FLT3-ITD⁻ patients (Table 1).

Cytogenetics and FLT3-ITD analyses

Cytogenetic and molecular genetic studies were performed by the German–Austrian Acute Myeloid Leukemia Study Group at Hannover Medical School or at the University of Ulm. Blood diagnostic samples were analyzed for the presence of ITD mutations in the FLT3 gene by polymerase-chain-reaction as described previously. [15] For FLT3-ITD molecular analyses, DNA was extracted from approximately 5×10^6 cells using Qiagen Blood Mini Columns according to the protocol of the manufacturer. PCR was performed with genomic DNA using primer molecules FLT3-14f-6F 5'-GCA ATT TAG GTA TGA AAG CCA GC-3' and FLT3-E15R 5'-CTT TCA GCA TTT TGA CGG CAA CC. 5 ng of DNA was amplified in a total volume of 50 μ l containing 50 mM KCl, 10 mM Tris-HCl, pH 8.3, 1.5 mM MgCl₂ and 0.001% (w/v) gelatine, 200 μ M dNTPs, primer oligonucleotides (FLT3-E14-6F [5-prime labeled with 6-FAM] and FLT3-E5R; 0.5 μ M each) and 1 unit of AmpliTaq Gold DNA-polymerase (Perkin-Elmer, Norwalk, CO, USA). The PCR consisted of an initial incubation step at 95°C for 11 min followed by 27 cycles at 94°C for 30 sec, 57 °C for 60 seconds and 72°C for 120 seconds, and a final elongation step at 94°C for 30 seconds and 60°C for 45 min in ABI 9700 PCR machines. PCR products were resolved on 2% agarose gels stained with ethidium bromide. DNA of FACS-sorted cells with DC immunophenotype was amplified by PCR and sequencing was performed on an Applied Biosystems 3130 sequencer and analysed with GeneMapper 4.0 (Applied Biosystems, Delaware/US).

Immunophenotypic analyses and sorting of mDCs and pDCs

PBMCs obtained from patients and healthy volunteers were isolated by standard density gradient centrifugation using Ficoll (Biocoll separating solution, Greiner, Bio-One, Germany) separation and cryopreserved in 90% FBS and 10% DMSO. mDCs and pDCs were identified using a commercially available kit ("peripheral blood dendritic cell detection by flow cytometry", Becton Dickinson BD, San Jose, CA, USA). The protocol is based on a 4-color staining. For detection of myeloid DCs we used: lineage cocktail 1 (FITC), containing monoclonal antibodies (mABs) against CD3, CD14, CD16, CD19, CD20 and CD56 as a negative selection, a mAB against CD11c (APC, clone S-HCL-3), a mAB against HLA-DR (PerCp, clone L243), and a mAB against CD86 (clone FUN-1) or CD83 (clone HB15e) (both PE). Detection of plasmacytoid DCs was similar, except that instead CD11c, CD123 detection (PE, clone 9F5) was performed. Stained cells were analyzed on a FACSCalibur cytometer using CellQuest software (BD, San Jose, CA, USA). 50.000 viable cells gated on the FSC/SSC scatter were negatively selected using the lineage markers. The resulting lin^- population was analyzed for HLA-DR/CD11c- (mDCs) or HLA-DR/CD123- (pDCs) expressing cells. The activation/ maturation status of DCs was evaluated by analyses of CD86- and CD83-expression.

11 additional ITD⁺ AML samples for which we could obtain higher viable cell numbers were further characterized as mixed lineage mDCs and pDCs upon analyses of lin^- /HLA-DR⁺ / CD11c⁺ /CD123⁺ cells. Four of the 11 patients were analyzed with an analysis based on lin^- /HLA-DR⁺ / CD4⁺ /CD11c⁺ /CD123⁺. Samples were incubated for two hours with Golgi Plug (BD, Heidelberg) to inhibit cytokine secretion. Cells were prepared following a BD cytofix/cytoperm protocol for intracellular staining. Cells were harvested on ice, washed and stained for the expression of cell surface lineage markers (FITC), HLA-DR (V450, BD), CD11c (APC, BD), CD123 (PerCp Cy-5.5, BD) and CD4 (Alexa700, BD). Cells were subsequently stained intracellularly for TNF- α (PE-Cy 7) and INF- α (PE-Green A, BD) or IL-1 α (PE-Green A, BD), respectively. After staining, cells were acquired at a minimum of 100.000 events. Five-color flow

cytometry analysis was performed using a LSR II apparatus. Analyses were made with BD FACS DIVA.

Morphological analyses of thawed/ sorted and ex vivo cultured samples

In order to analyze the morphology of cells with mDC or pDC immunophenotypes, diagnostic samples from six ITD⁺ patients were thawed, sorted for lin⁻CD11c⁺HLA-DR⁺ (mDCs) and lin⁻CD123⁺HLA-DR⁺ (pDCs) on a FACS Aria (BD). Cells were analyzed directly after sorting by cyospin, Giemsa staining and microscopy (Olympus CKX 41) or were further cultivated under DC differentiation/ maturation conditions. ITD⁺ mDC sorted cells were cultured in 12-well culture plates in X-vivo medium (Lonza, Basel, Switzerland) in the presence of recombinant human granulocyte macrophage colony stimulating factor (rhGM-CSF) (20 ng/μl, Cell Genix GmbH, Freiburg, Germany) and recombinant human Interleukin 4 (rhIL-4) (20 ng/μl, Cell Genix GmbH, Freiburg, Germany). ITD⁺ pDC sorted cells were cultured in the presence of rhIL-3 (10 ng/ml, R&D systems, Cologne, Germany). After five to seven days in culture, mDCs and pDCs were stimulated with rhCD40-ligand (CD40L) (50 ng/ml, R&D Systems, Cologne, Germany).

Results and Discussion

ITD negative and positive AML samples show elevated frequencies of mDCs and pDCs

We used a commercially available analytical procedure for quantification of DC subsets in whole blood PBMC. CD3⁻, CD14⁻, CD16⁻, CD19⁻, CD20⁻, CD56⁻ cells were analyzed for expression of HLA-DR/CD11c (mDCs) or HLA-DR/CD123 (pDCs) (**Fig. 1A**). Activated and matured DCs were further characterized through analyses of CD86 and CD83 expression, respectively [1]. In order to validate the methodology for DC frequency analyses in a healthy control group, we initially analyzed the frequency of mDCs and pDCs in fresh and cryopreserved samples obtained from ten healthy volunteers (**Fig. 1B**). The fresh samples were

analyzed on the day of blood draw, whereas the cryopreserved samples were maintained frozen for at least one week prior to analysis. Although the numbers of detectable mDCs ($\text{lin}^-/\text{CD11c}^+/\text{HLA-DR}^+$) and pDCs ($\text{lin}^-/\text{CD123}^+/\text{HLA-DR}^+$) in cryopreserved samples were lower than fresh samples, the difference was found not to be statistically significant (**Fig. 1B**). Cryopreserved mDCs of healthy volunteers (0.82 ± 0.23 % of PBMC) contained mainly activated (CD86^+) and mature (CD83^+) cells. In contrast, in pDCs (0.44 ± 0.19 of PBMC), only approximately half of the cells were activated and mature. (**Fig. 1C**).

In contrast to the homogeneous frequencies of the mDCs (in the range between 0.4 and 1.2%) and pDCs (0.3 - 0.8%) in the PBMC obtained from healthy volunteers, extremely variable frequencies of mDCs (0.3 – 60%) and pDCs (0.2 – 70%) were observed in AML diagnostic samples of both ITD^+ and ITD^- patients (**Fig. 2A, B**).

Due to the high variability in the frequencies of cells with mDC immunophenotype, we considered an “aberrant” mDC frequency for those samples showing mDC frequencies equal or greater than 10% of the total viable cells included in the analyses (thus, roughly corresponding to 10-fold higher than the normal mDC frequency observed in healthy controls). A remarkable proportion of AML samples had an “aberrant” mDC frequency (42% for ITD^+ and 38% for ITD^-). We did not observe significant differences between the distributions of activated and matured mDCs in ITD^+ and ITD^- samples (**Fig. 2A**). Nevertheless, what was noticeable in these AML samples in comparison to the samples of healthy volunteers, was that a much smaller fraction of the AML-mDCs co-expressed CD86 or CD83, indicating a lower activation and maturation status, respectively.

The average frequency of cells with pDC immunophenotype was also dramatically increased in AML diagnostic samples compared to healthy controls (**Fig. 2B**). To facilitate analyses of the highly variable pDC frequencies, we considered “aberrant” the samples with equal or greater than 2% frequency of pDCs (thus, more than 5-fold higher than healthy

controls). Approximately 40% of the samples analyzed in the ITD⁺ group and 26% in the ITD⁻ group were classified as “aberrant”, indicating an overall trend for high accumulation of pDCs.

Mohty et al previously reported aberrant frequencies of DCs in cryopreserved AML samples [16]. In their work, however, samples were not stratified according to the presence of FLT3-ITD and they used immunoglobulin-like transcript 3 (ILT3) instead of HLA-DR as co-expressed DC marker. In view of our current results, ITD⁺ AML samples seem to demonstrate an even more pronounced pattern of aberrant DC frequencies than ITD⁻ AML samples.

ITD negative and positive DCs detected in AML samples show down-regulation of HLA-DR

Expression of HLA-DR (corresponding to the major histocompatibility complex II, MHC II) in DCs detected in AML diagnostic samples was expressed at significantly lower levels than for DCs analyzed in samples of healthy controls (**Fig. 3**), a finding that correlates with previous observations regarding the down-regulation of HLA-DR in AML samples obtained from ITD⁺ patients [17-18]. Notably, within the AML groups, expression of HLA-DR in DC populations detectable in ITD⁺ AML was significantly lower than in DCs detectable in ITD⁻ samples (**Fig. 3**). The profound down-regulation of HLA-DR in ITD⁺ DC-subsets might be implicated in defective class II antigen presentation leading to dysregulation of these APCs. This could potentially affect presentation of leukemia antigens to CD4⁺ T helper cells, hampering development of a stimulatory cytokine environment for anti-leukemia immune responses.

mDCs and pDCs detectable in ITD⁺ AML samples are derived from leukemia and can be driven to further differentiate morphologically with cytokines in vitro

An important observation by Mohty et al [16], who had previously reported high frequencies of mDC and pDC subsets in diagnostic AML samples, was that these cells were likely of leukemic origin since they carried the same translocations as the original leukemia. In

order to extend this observation to ITD⁺ leukemia, DCs obtained from three different ITD⁺ AML samples were sorted and examined for the presence of the ITD by PCR. DCs sorted from the ITD⁺ AML samples contained the ITD mutation, demonstrating that they originated from leukemic blasts (**Fig. 4**).

These ITD⁺ sorted DCs were then used for cytopsin/Giemsa preparations and morphological analyses (**Fig. 5**). Sorted mDCs (Lin⁻ HLA-DR⁺ CD11c⁺) corresponded to cells with appearance of monocytic blasts with high nuclear-to-cytoplasmic ratio (**Fig. 5A**). Sorted pDCs demonstrated blast-like morphology with some cells resembling the normal pDC morphology originally described by Siegal et al [19] and some presenting the "AML-cuplike" description of Kussick et al [18], who previously described FLT3-ITD⁺ blasts with prominent nuclear invagination and decreased HLA-DR expression (**Fig. 5B**). Sorted ITD⁺ DCs that could be cultured *ex vivo* in the presence of cytokines commonly used for terminal differentiation of mDCs (GM-CSF, IL-4, CD40L) or pDCs (IL-3, CD40L) were analyzed. ITD⁺ mDCs maintained in the presence of GM-CSF/ IL-4 for 5 days resulted in a population of large cells with dendrites, and upon subsequent 24h treatment with CD40L, abundant veils on the cell surface typical of mDCs were observed (**Fig. 5C**). Sorted ITD⁺ pDCs cultured in the presence of IL-3 for 5 days resulted in conspicuously large cells, and subsequent 24 h treatment with CD40L resulted in cells with high granularity (**Fig. 5D**).

Put together, these results demonstrated that circulating ITD⁺ DCs have characteristics of leukemic blasts, which upon *ex vivo* supra-physiological stimulation with cytokines and maturation factors could drive the cells to acquire more differentiated characteristics.

General occurrence of a mixed lineage population of mDCs (CD11c⁺) /pDCs (CD123⁺) in ITD⁺ and ITD⁻ AML samples

Previous work describing the occurrence of high frequencies of DCs in AML samples considered the CD11c⁺ mDC and CD123⁺ pDC populations as mutually exclusive events [16].

Since we had observed that some AML samples had high frequencies of both mDCs and pDCs and since expression of markers of various hematopoietic lineages is common in leukemogenesis, we evaluated whether mixed mDCs/ pDCs lineages could also be found in ITD⁺ and/or ITD⁻ AML samples. The subsequent flow cytometry analyses consisted in the negative selection of non-DC lineage markers, positive selection of HLA-DR⁺ DCs and, within this defined DC population, we analyzed the frequencies of single or double CD11c⁺ and CD123⁺ cells (**Fig. 6A**). For a subset of ITD⁺ patients we also included the selection of CD4⁺ cells for a more stringent characterization of DCs (three representative examples are shown in **Fig. 7**).

Surprisingly, double positive mDC/ pDC populations were observed in all ITD⁺ and ITD⁻ AML samples analyzed, and the frequency of double positive DCs corresponded to an average of 58% for ITD⁺ and 67% of ITD⁻, indicating their preponderance (**Fig. 6 B, Table 2 and 3**). In addition to the double positive mDCs/ pDCs, single mDCs and pDCs cell populations were also detectable in the samples in different distributions (**Tables 2 and 3 A-C**). Of note, CD11c⁺/ CD123⁺ cells have recently been described as early precursors of myelocytic DCs derived from CD34⁺ progenitors [20-22]. In fact, CD123 is the IL-3 receptor (IL-3R) alpha chain, which is a well established stem cell marker in healthy and leukemic CD34⁺ stem cells, and is known to be down-regulated only late in myeloid differentiation.[23-25]. IL-3R/ CD123 expression in ITD⁺ AML blasts has been described as a frequent event [26-27], which here seems to be associated with the accumulation of DC precursors that are not terminally differentiated towards mDC or pDC. Of note, in this study we also observed that a subset of ITD⁺ AML samples showed a significantly higher expression of CD123 when compared with ITD⁻ AML samples (data not shown).

Analogous to our findings, Ma et al [28] have also demonstrated clonal involvement in circulating myeloid and lymphoid precursors of dendritic cells in peripheral blood of patients with myelodysplastic syndromes (MDS). Altogether, these observations provide evidence that ITD⁺

but also ITD⁻ leukemic or progenitor stem cells differentiate towards common CD11c⁺ / CD123⁺ mDC/ pDC precursors which are accumulated, prior to subsequent split between differentiated mDCs and pDCs.

Stimulation of mDCs/ pDCs with CD40L or CpG results into partial activation of the cells for production of inflammatory cytokines

ITD⁺ AML samples were further analyzed for mDC/ pDC frequencies based on detection of the surface markers Lin⁻/ HLA-DR⁺/ CD4⁺. Using these more stringent analyses, 5.2 – 20.5% of the DCs present in the ITD⁺ AML samples corresponded to mDC/ pDCs (**Fig. 7A**).

In order to correlate the immunophenotypic characteristics of the mDC/ pDC mixed lineage population with DC function, we performed intracellular staining of inflammatory cytokines (IFN- α , TNF- α , IL-1 α) after stimulation of the AML blasts with CD40L or CpG (**Fig. 7B**). We used healthy donors as controls for these analyses, which confirmed up-regulation of IFN- α production by pDCs after CpG stimulation (**Fig. 7**). IFN- α and IL-1 α were detectable in all mDC/ pDC populations, but their regulation through CpG and CD40L was extremely variable. Production of TNF- α by mDCs/ pDCs was hardly detectable in comparison to healthy mDCs and pDCs (**Fig. 7**). Thus, these functional analyses indicated a deregulated baseline cytokine production and stimulatory responses in mDCs/ pDCs.

Based on long-standing clinical expertise that graft-versus leukemia (GVL) effect is an immunologic factor positively influencing leukemia eradication, immunotherapeutic approaches to enhance GVL have been sought. During past years, several groups have pointed to the fact that AML cells can express antigens and can be “corrected” as antigen presenting cells through cytokine stimulation leading to their terminal differentiation [29]. This approach was however not shown practical for ITD⁺ AML cultures maintained *in vitro*, which failed to generate ITD⁺ AML-DCs in the presence of GM-CSF, IL-4 and TNF- α [13]. In our work, we did obtain partial

correction of the DC morphology and cytokine production, but this was mainly noticeable in the presence of CD40L or CpG, which drive terminal maturation of DCs.

In summary, our work demonstrates that both ITD⁺ and ITD⁻ AML samples contain a high proportion of cells with DC progenitor characteristics, hindered in terminal differentiation, partially blocked for maturation and with deregulated cytokine production characteristics. Thus, our study indicates immunosuppressive mechanisms of an immature mDC/ pDC leukemic lineage, which might be operative during leukemogenesis and can potentially promote anergy induction, tolerance, and ultimately immune-escape of leukemia cells.

These results suggest that, by hindering the “AML-DC” differentiation and maturation, the occurrence of FLT3-ITD can potentially undermine anti-leukemia immune responses, which calls for more effective adjuvant immunotherapeutic strategies in ITD⁺ leukemia in order to rebound the immune regeneration for ultimate leukemia elimination.

Acknowledgments

M.R. designed and performed experiments, analyzed data and wrote the manuscript; J.K. and A.G. provided AML samples and clinical data and assisted in the characterization of the FLT3-ITD insert; K.S. designed and performed experiments; M.H. performed the statistical analyses; G.S. and E.M.W. analyzed data; and R.S. designed experiments, analyzed data, corrected and completed the manuscript. We are grateful to Dr. Carsten Wiethe for exceptional technical support regarding flow cytometry analyses. We thank members of the Stripecke laboratory for their contributions to the completion of this work. We also thank the MHH sorting facility staff and the clinicians, nurses and technicians in the Department of Hematology for their professional support. Use of the LSR II flow cytometer was made possible through SFB-738 and technical support of Artur Wilms. The authors gratefully acknowledge Dr. Christopher Baum and

Dr. Michael Morgan for critical reading of the manuscript. This work was supported by a collaborative research grant from the Jose Carreras Foundation (to R.S.) and a grant of the German Research Council (DFG/ SFB738 to R.S. and A.G.). R.S. is further supported by the DFG Excellence Cluster Rebirth in Regenerative Medicine and by the Deutsche Krebshilfe. M.R. was supported by a MHH-HBRS/ Strucmed fellowship.

References

1. Rovati B, Mariucci S, Manzoni M, Bencardino K, Danova M (2008) Flow cytometric detection of circulating dendritic cells in healthy subjects. *Eur J Histochem* 52 (1):45-52
2. Li L, Piloto O, Kim KT, Ye Z, Nguyen HB, Yu X, Levis M, Cheng L, Small D (2007) FLT3/ITD expression increases expansion, survival and entry into cell cycle of human haematopoietic stem/progenitor cells. *Br J Haematol* 137 (1):64-75
3. Naik SH (2008) Demystifying the development of dendritic cell subtypes, a little. *Immunol Cell Biol* 86 (5):439-452
4. Karsunky H, Merad M, Cozzio A, Weissman IL, Manz MG (2003) Flt3 ligand regulates dendritic cell development from Flt3+ lymphoid and myeloid-committed progenitors to Flt3+ dendritic cells in vivo. *J Exp Med* 198 (2):305-313
5. Kelly LM, Liu Q, Kutok JL, Williams IR, Boulton CL, Gilliland DG (2002) FLT3 internal tandem duplication mutations associated with human acute myeloid leukemias induce myeloproliferative disease in a murine bone marrow transplant model. *Blood* 99 (1):310-318
6. Maraskovsky E, Daro E, Roux E, Teepe M, Maliszewski CR, Hoek J, Caron D, Lebsack ME, McKenna HJ (2000) In vivo generation of human dendritic cell subsets by Flt3 ligand. *Blood* 96 (3):878-884
7. Bruserud O, Hovland R, Wergeland L, Huang TS, Gjertsen BT (2003) Flt3-mediated signaling in human acute myelogenous leukemia (AML) blasts: a functional characterization of Flt3-ligand effects in AML cell populations with and without genetic Flt3 abnormalities. *Haematologica* 88 (4):416-428
8. Gilliland DG, Griffin JD (2002) Role of FLT3 in leukemia. *Curr Opin Hematol* 9 (4):274-281
9. Munoz L, Aventin A, Villamor N, Junca J, Acebedo G, Domingo A, Rozman M, Torres JP, Tormo M, Nomdedeu JF (2003) Immunophenotypic findings in acute myeloid leukemia with FLT3 internal tandem duplication. *Haematologica* 88 (6):637-645
10. Schlenk RF, Dohner K, Krauter J, Frohling S, Corbacioglu A, Bullinger L, Habdank M, Spath D, Morgan M, Benner A, Schlegelberger B, Heil G, Ganser A, Dohner H (2008) Mutations and treatment outcome in cytogenetically normal acute myeloid leukemia. *N Engl J Med* 358 (18):1909-1918
11. Zheng R, Friedman AD, Small D (2002) Targeted inhibition of FLT3 overcomes the block to myeloid differentiation in 32Dcl3 cells caused by expression of FLT3/ITD mutations. *Blood* 100 (12):4154-4161

12. Thiede C, Steudel C, Mohr B, Schaich M, Schakel U, Platzbecker U, Wermke M, Bornhauser M, Ritter M, Neubauer A, Ehninger G, Illmer T (2002) Analysis of FLT3-activating mutations in 979 patients with acute myelogenous leukemia: association with FAB subtypes and identification of subgroups with poor prognosis. *Blood* 99 (12):4326-4335
13. Houtenbos I, Westers TM, Hess CJ, Waisfisz Q, Ossenkoppele GJ, van de Loosdrecht AA (2006) Flt-3 internal tandem duplication hampers differentiation of AML blasts towards leukemic dendritic cells. *Leukemia* 20 (10):1892-1895
14. Li L, Piloto O, Nguyen HB, Greenberg K, Takamiya K, Racke F, Huso D, Small D (2008) Knock-in of an internal tandem duplication mutation into murine FLT3 confers myeloproliferative disease in a mouse model. *Blood* 111 (7):3849-3858
15. Frohling S, Schlenk RF, Breitruck J, Benner A, Kreitmeier S, Tobis K, Dohner H, Dohner K (2002) Prognostic significance of activating FLT3 mutations in younger adults (16 to 60 years) with acute myeloid leukemia and normal cytogenetics: a study of the AML Study Group Ulm. *Blood* 100 (13):4372-4380
16. Mohty M, Jarrossay D, Lafage-Pochitaloff M, Zandotti C, Briere F, de Lamballeri XN, Isnardon D, Sainty D, Olive D, Gaugler B (2001) Circulating blood dendritic cells from myeloid leukemia patients display quantitative and cytogenetic abnormalities as well as functional impairment. *Blood* 98 (13):3750-3756
17. Syampurnawati M, Tatsumi E, Furuta K, Takenokuchi M, Nakamachi Y, Kawano S, Kumagai S, Saigo K, Matsui T, Takahashi T, Nagai K, Yabe H, Kondo S, Hayashi Y (2007) HLA-DR-negative AML (M1 and M2): FLT3 mutations (ITD and D835) and cell-surface antigen expression. *Leuk Res* 31 (7):921-929
18. Kussick SJ, Stirewalt DL, Yi HS, Sheets KM, Pogossova-Agadjanyan E, Braswell S, Norwood TH, Radich JP, Wood BL (2004) A distinctive nuclear morphology in acute myeloid leukemia is strongly associated with loss of HLA-DR expression and FLT3 internal tandem duplication. *Leukemia* 18 (10):1591-1598
19. Siegal FP, Kadowaki N, Shodell M, Fitzgerald-Bocarsly PA, Shah K, Ho S, Antonenko S, Liu YJ (1999) The nature of the principal type 1 interferon-producing cells in human blood. *Science* 284 (5421):1835-1837
20. Ebner S, Hofer S, Nguyen VA, Furhapter C, Herold M, Fritsch P, Heufler C, Romani N (2002) A novel role for IL-3: human monocytes cultured in the presence of IL-3 and IL-4 differentiate into dendritic cells that produce less IL-12 and shift Th cell responses toward a Th2 cytokine pattern. *J Immunol* 168 (12):6199-6207
21. Shi J, Wang M, Wan Y, Ikeda K (2009) [The biological characteristics of peripheral blood CD123+ myeloid dendritic cell]. *Xi Bao Yu Fen Zi Mian Yi Xue Za Zhi* 25 (3):204-207
22. Ward KA, Stewart LA, Schwarzer AP (2006) CD34+-derived CD11c+ + + BDCA-1+ + CD123+ + DC: expansion of a phenotypically undescribed myeloid DC1 population for use in adoptive immunotherapy. *Cytotherapy* 8 (2):130-140
23. Sato N, Caux C, Kitamura T, Watanabe Y, Arai K, Banchereau J, Miyajima A (1993) Expression and factor-dependent modulation of the interleukin-3 receptor subunits on human hematopoietic cells. *Blood* 82 (3):752-761
24. Munoz L, Nomdedeu JF, Lopez O, Carnicer MJ, Bellido M, Aventin A, Brunet S, Sierra J (2001) Interleukin-3 receptor alpha chain (CD123) is widely expressed in hematologic malignancies. *Haematologica* 86 (12):1261-1269
25. Jordan CT, Upchurch D, Szilvassy SJ, Guzman ML, Howard DS, Pettigrew AL, Meyerrose T, Rossi R, Grimes B, Rizzieri DA, Luger SM, Phillips GL (2000) The interleukin-3 receptor

alpha chain is a unique marker for human acute myelogenous leukemia stem cells. *Leukemia* 14 (10):1777-1784

26. Riccioni R, Diverio D, Riti V, Buffolino S, Mariani G, Boe A, Cedrone M, Ottone T, Foa R, Testa U (2009) Interleukin (IL)-3/granulocyte macrophage-colony stimulating factor/IL-5 receptor alpha and beta chains are preferentially expressed in acute myeloid leukaemias with mutated FMS-related tyrosine kinase 3 receptor. *Br J Haematol* 144 (3):376-387

27. Sell S (2005) Leukemia: stem cells, maturation arrest, and differentiation therapy. *Stem Cell Rev* 1 (3):197-205

28. Ma L, Delforge M, van Duppen V, Verhoef G, Emanuel B, Boogaerts M, Hagemeijer A, Vandenberghe P (2004) Circulating myeloid and lymphoid precursor dendritic cells are clonally involved in myelodysplastic syndromes. *Leukemia* 18 (9):1451-1456

29. Stripecke R, Levine AM, Pullarkat V, Cardoso AA (2002) Immunotherapy with acute leukemia cells modified into antigen-presenting cells: ex vivo culture and gene transfer methods. *Leukemia* 16 (10):1974-1983

Figure legends

Fig. 1. Experimental design and validation of methods. (A) Schema of the flow cytometry analyses for detection of mDCs and pDCs. (B) Frequencies of DCs detectable in fresh (black) versus thawed (grey) PBMCs obtained from healthy donors (n=10) do not differ significantly (p values mDCs: 0.15, pDCs: 0.44.) (C) Frequencies of cells with mDC and pDC immunophenotypes as total cells or with additional expression of the activation marker CD86 and maturation marker CD83 (numbers indicate the average and standard deviation for each analyses; n=10).

Fig. 2. Flow cytometry analyses of cells with DC immunophenotype in AML diagnostic samples. (A) Frequencies of mDCs and (B) pDCs detected in FLT3-ITD⁺ (upper graphs) and FLT3-ITD⁻ AML samples (lower graphs). All analyses indicated significantly higher frequencies of mDCs and pDCs in ITD⁺ and ITD⁻ AML samples in comparison with DCs analyses in healthy subjects (p< 0.05). The panels on the right side show representative FACS analyses samples with the gating strategy.

Fig. 3. Flow cytometry analyses of HLA-DR expression in AML cells. (A) Mean fluorescence intensity (M.F.I.) of HLA-DR expression on mDCs showing significant (*) differences in the expression level comparing healthy (n=10), ITD⁻ (n=42) and ITD⁺ (n=33) PBMC. (B) M.F.I. of HLA-DR expression on pDCs.

Fig. 4. Sequencing of PCR-ITD mutational insert product from ITD⁺ patients. In addition to the w.t. FLT3 amplification product, the ITD mutational insert is detectable in the original AML patient samples and in the sorted DCs.

Fig. 5. Morphological analyses of cytospin/ Giemsa preparations of FLT3-ITD⁺ AML diagnostic samples prior and post-sorting of mDCs and pDCs. AML samples obtained from three patients and containing high frequencies of mDCs **(A)** or pDCs **(B)** before and after sorting resemble leukemia blasts. **(C)** ITD⁺ AML-mDCs after sorting and culture with GM-CSF/ IL-4 and maturation with CD40L show cell enlargement and veils. **(D)** ITD⁺ AML pDCs after sorting and culture with IL-3 and maturation with CD40L show cell enlargement and high granularity.

Fig. 6. Immunophenotypic detection of mDCs/ pDCs mixed lineages. (A) Schematic presentation of flow cytometry analyses. (B) Average frequency of mixed lineage mDCs/ pDCs, single mDCs and pDCs obtained for ITD⁺ and ITD⁻ patients.

Fig. 7. Functional analyses of double positive CD11c/CD123 mDCs / pDCs in ITD⁺ AML samples of three patients. (A) Gating approach for detection of mDCs/ pDCs. (b) Frequency of mDC/ pDCs with detectable intracellular cytokines after stimulation with CD40L or CpG.

Table legends

Table 1. Patients characteristics for first cohort (mDCs or pDCs analyses) and second cohort (mDCs or pDCs or mDC/pDC analyses). (** $p \leq 0.05$),

Table 2. Frequency of double positive mDCs/ pDCs and single mDCs and pDCs in 11 ITD⁺ AML samples. Despite the fact that mDCs/ pDCs were observed in all AML samples, most of the samples showed high frequency of mDCs (A), and some samples showed also high frequencies of pDCs (B) or comparable frequencies of mDCs and pDCs (C).

Table 3. Frequency of double positive mDCs/ pDCs and single mDCs and pDCs in 12 ITD⁺ AML samples. The samples varied relative to the majority of mDCs (A), pDCs (B), but for most of the cases comparable frequencies of mDCs and pDCs were observed (C).

Figure 1

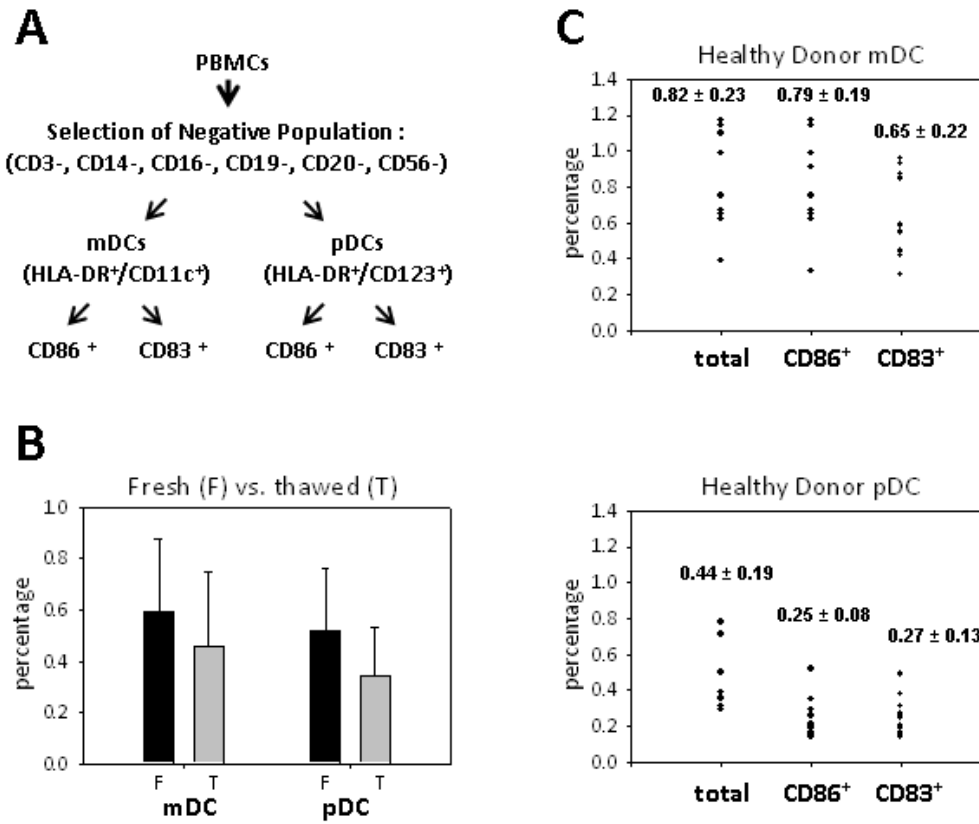


Figure 2

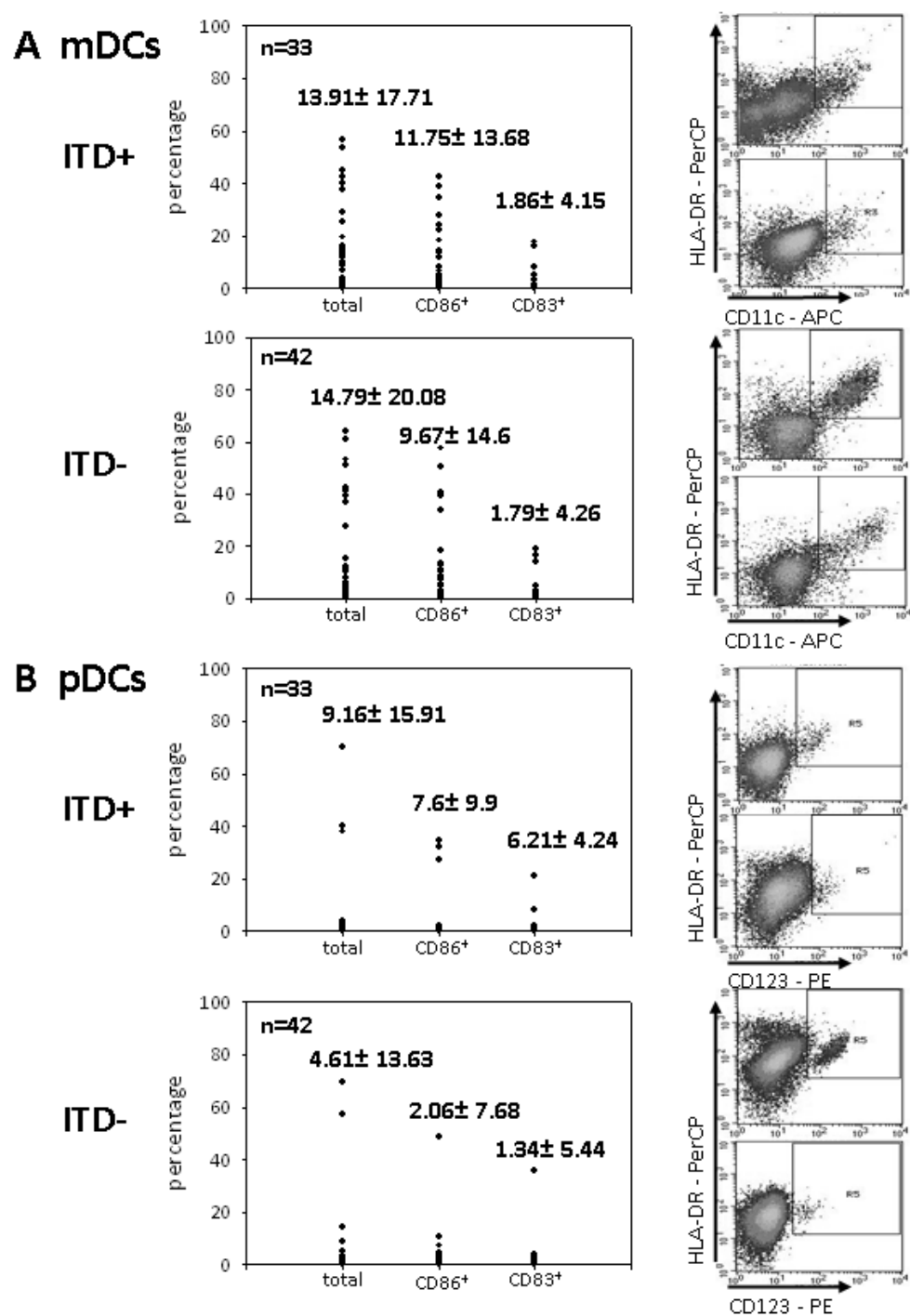
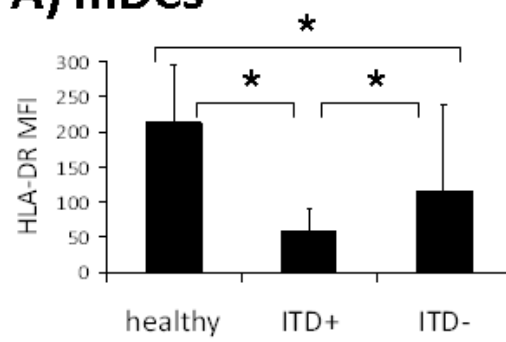


Figure 3

A) mDCs



B) pDCs

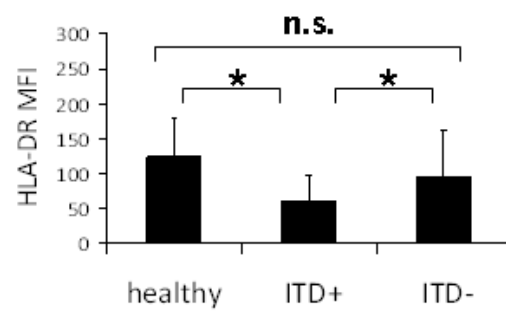


Figure 4

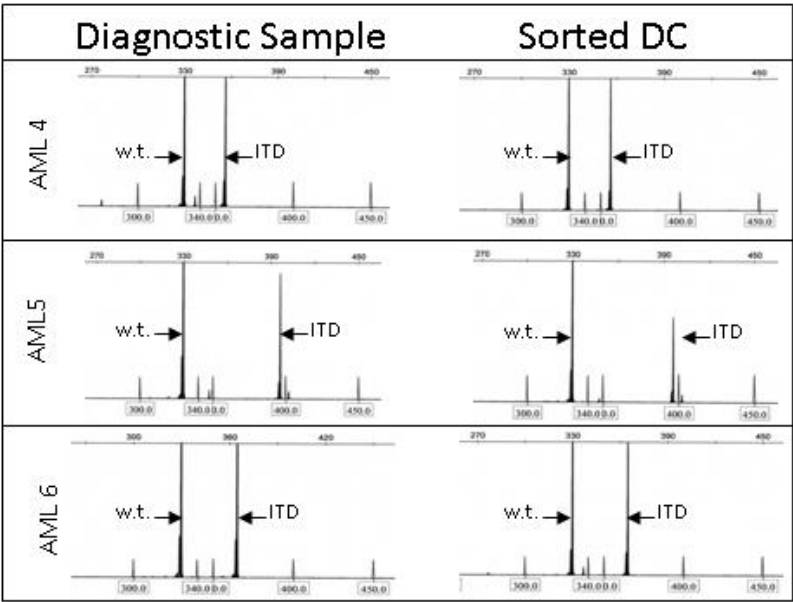


Figure 5

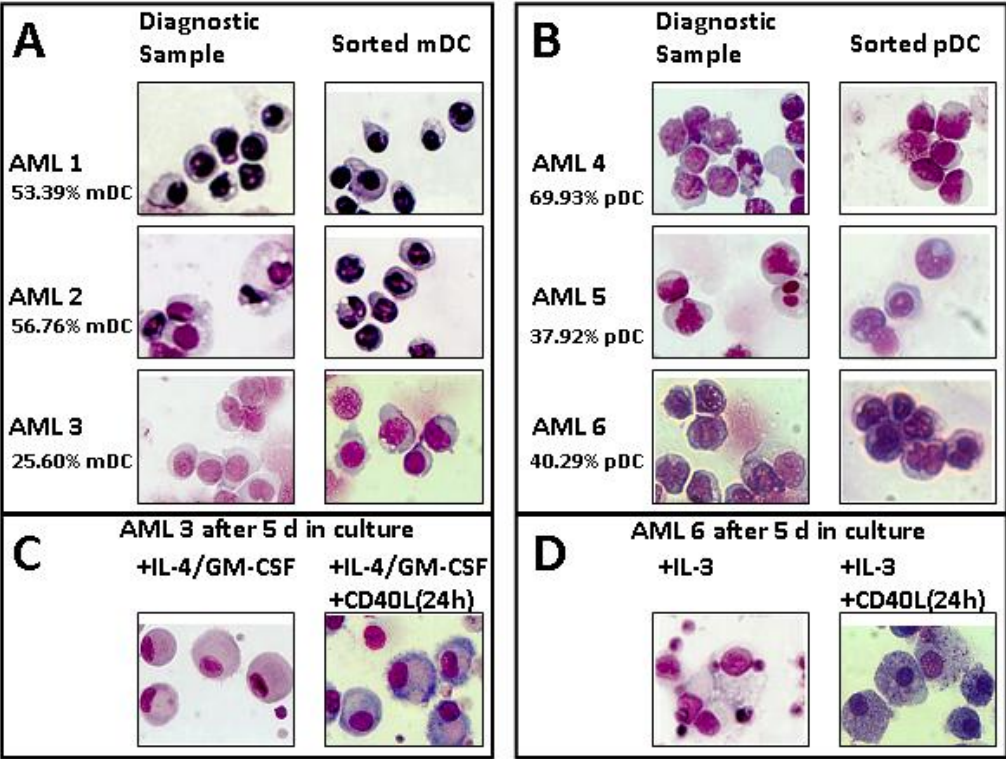
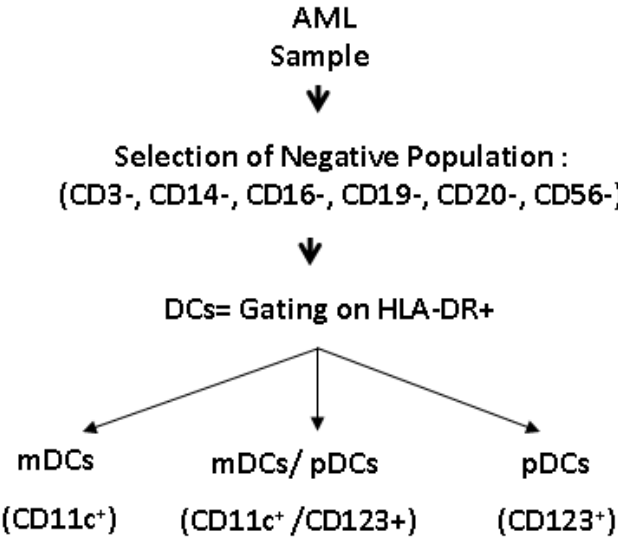


Figure 6

A Analysis Scheme



B Frequency of double mDCs/ pDCs in the DC population

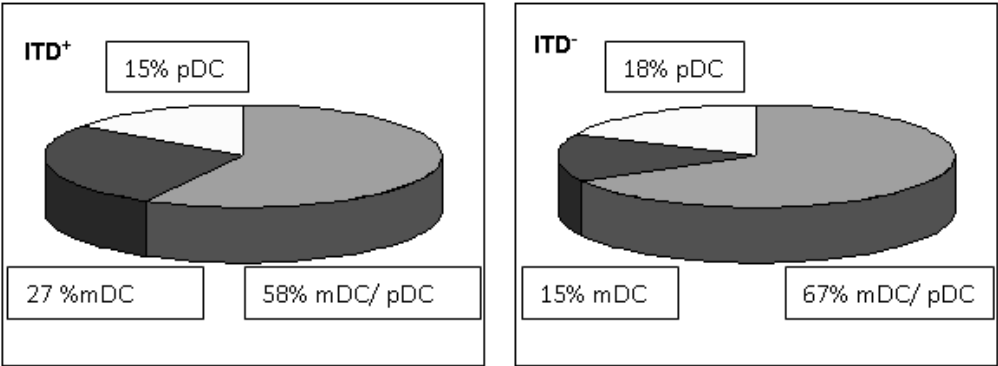


Figure 7

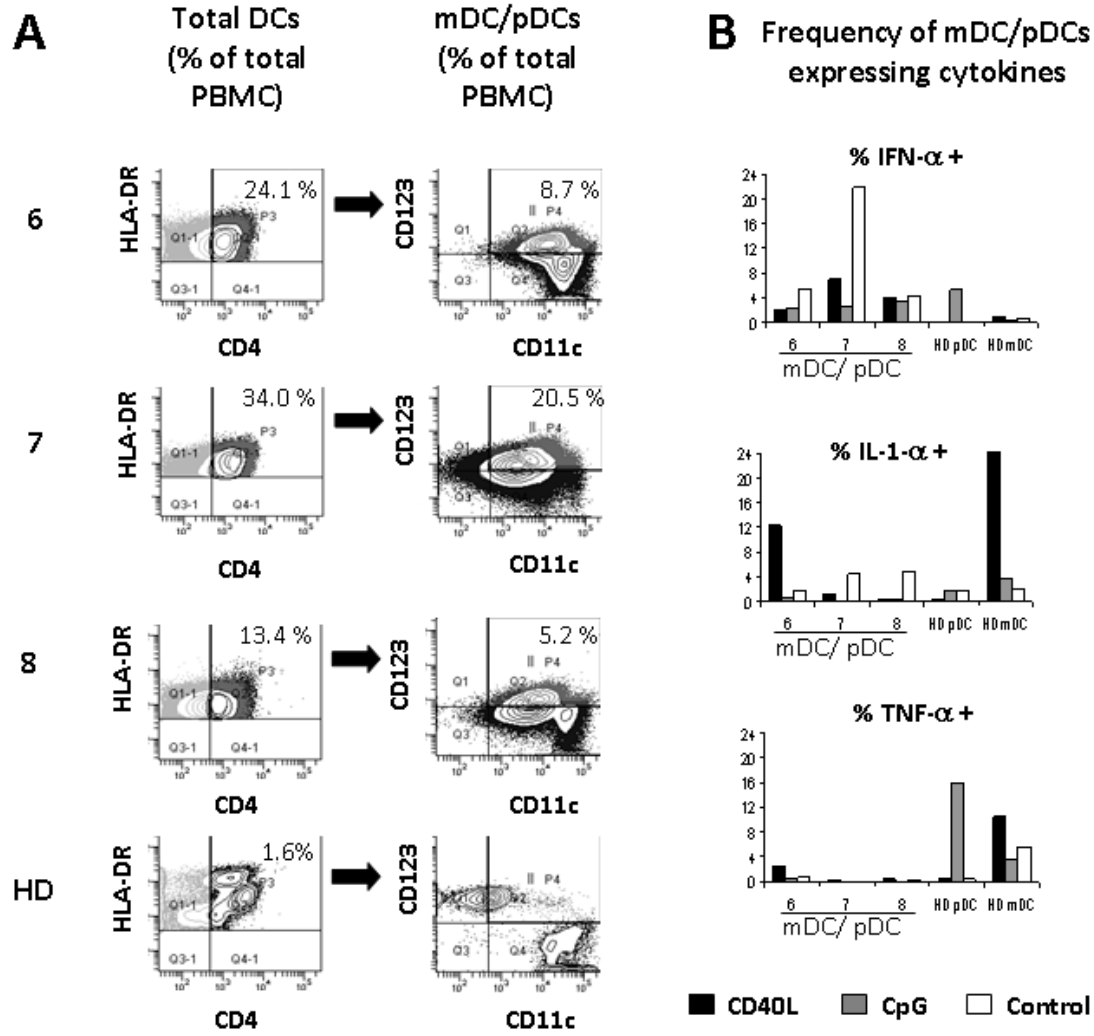


Table 1: Patient characteristics.

	First cohort FLT3 ITD positive (N=33)	First cohort FLT3 ITD negative (N=42)	p value	Second cohort FLT3 ITD positive (n=11)*	Second cohort FLT3 ITD negative (n=12)**
Age, median (range) years	62 (32-84)	56.5 (18-82)	0.17	60.38 (44-83)	56.8 (35-79)
Sex (no./%)					
Male	18 (55)	25 (60)	0.67	6 (54)	6 (60)
Female	15 (45)	17 (40)		5 (46)	4 (40)
WBC median (x10 ⁹ /L)	95.19	65.69	0.1	67.7	63.52
FAB (no./%)	N=18	N=21	0.29	N=10	N=8
M0	2 (11)	2 (10)		1 (9)	0 (0)
M1	1 (6)	5 (24)		2 (18)	2 (16)
M2	4 (22)	3 (14)		1 (9)	0 (10)
M3	3 (17)	0 (0)		0 (0)	0 (0)
M4	3 (17)	5 (24)		3 (27)	3 (25)
M5	5 (27)	6 (28)		5 (45)	3 (25)
(not FAB classified)	(15)	(21)		(1)	(4)
Cytogenetics (no./ %)			0.13		
Favorable	3 (9)	3 (7)		0 (0)	0 (0)
Intermediate	26 (79)	28 (67)		7 (63)	7 (58)
Adverse	2 (6)	10 (24)		2 (18)	4 (33)
Missing	2 (6)	1 (2)		2 (15)	1 (10)
Probability of relapse (%)	15	24	0.51	N.A.	N.A.
Allo- Transplantation (%)	21	31	0.33	36	33
Complete remission to date (CR) (no./ %)	15 (45)	22 (54)	0.48	4 (36)	9 (75)

* Four of the patients in this cohort were previously included in FLT3-ITD+ cohort 1.

** Seven of the patients in this cohort were previously included in FLT3-ITD- cohort 1.

Table 2: Characterization of the DC populations in FLT3-ITD⁺ patients.

A: High mDC/ pDC and high mDCs frequencies

AML sample	WBC	FAB	%DCs In PBMC	% mDC/pDC In DCs	% mDC In DCs	% pDC In DCs
5	6.3	M4	23.28	79.30	18.17	2.53
6	56.2	M5a	39.2	34.95	64.79	0.25
7	30.3	M4/5	34.7	64.54	30.84	4.61
8	216	M0	34.1	39.00	60.41	0.59
9	107	M5a	39.1	69.80	29.92	0.25
10	1.5	M1	3.57	27.74	60.50	11.76

B: High mDC/ pDC and high pDCs frequencies

AML sample	WBC	FAB	%DCs In PBMC	% mDC/pDC In DCs	% mDC In DCs	% pDC In DCs
1	69.9	M2	39.04	35.00	0.48	64.52
2	46.3	M5	52.02	64.28	6.62	29.10
11	65.5	M5	11.00	73.09	8.09	18.82
4	79.0	N.A.	11.55	55.16	10.32	34.52

C: High mDC/ pDC and low mDCs or pDCs

AML sample	WBC	FAB	%DCs In PBMC	% mDC/pDC In DCs	% mDC In DCs	% pDC In DCs
3	66.7	M5	45.97	90.12	5.21	4.67

Table 3: Characterization of the DC populations in FLT3-ITD⁺ patients.

A: High mDC/ pDC and high mDCs frequencies

AML sample	WBC	FAB	%DCs In PBMC	% mDC/pDC In DCs	% mDC In DCs	% pDC In DCs
1	4.7	M1	58.26	36.09	57.57	6.32
2	182	N.A.	9.9	87.36	10.20	2.41
3	76	M4	9.15	59.22	34.09	6.67

B: High mDC/ pDC and high pDCs frequencies

AML sample	WBC	FAB	%DCs In PBMC	% mDC/pDC In DCs	% mDC In DCs	% pDC In DCs
4	5.2	N.A.	8.11	81.37	3.33	15.29
5	34	M5b	53.71	71.37	0.36	28.23
6	6.8	M4	27.44	58.71	1.75	39.54
7	129.5	N.A.	52.79	61.53	1.52	36.94

C: High mDC/ pDC and high mDCs or pDCs

AML sample	WBC	FAB	%DCs In PBMC	% mDC/pDC In DCs	% mDC In DCs	% pDC In DCs
8	0.7	M4eo	23.97	60.52	18.22	21.23
9	69	N.A.	31.8	62.33	18.21	19.47
10	18.4	M5	21.97	61.63	15.66	22.70
11	23.2	M1	8.08	77.60	13.24	9.16
12	115.7	M5	1.57	82.17	7.01	10.83