



**HAL**  
open science

## First detection of VHE gamma-rays from SN 1006 by HESS

Fabio Acero, F. Aharonian, A. G. Akhperjanian, G. Anton, U. Barres de Almeida, A. R. Bazer-Bachi, Y. Becherini, B. Behera, M. Beilicke, K. Bernlöhr, et al.

► **To cite this version:**

Fabio Acero, F. Aharonian, A. G. Akhperjanian, G. Anton, U. Barres de Almeida, et al.. First detection of VHE gamma-rays from SN 1006 by HESS. *Astronomy and Astrophysics - A&A*, 2010, 516, pp.A62. hal-00631853

**HAL Id: hal-00631853**

**<https://hal.science/hal-00631853>**

Submitted on 18 Jan 2022

**HAL** is a multi-disciplinary open access archive for the deposit and dissemination of scientific research documents, whether they are published or not. The documents may come from teaching and research institutions in France or abroad, or from public or private research centers.

L'archive ouverte pluridisciplinaire **HAL**, est destinée au dépôt et à la diffusion de documents scientifiques de niveau recherche, publiés ou non, émanant des établissements d'enseignement et de recherche français ou étrangers, des laboratoires publics ou privés.



Distributed under a Creative Commons Attribution 4.0 International License

## First detection of VHE $\gamma$ -rays from SN 1006 by HESS

F. Acero<sup>15</sup>, F. Aharonian<sup>1,13</sup>, A. G. Akhperjanian<sup>2</sup>, G. Anton<sup>16</sup>, U. Barres de Almeida<sup>8,\*</sup>, A. R. Bazer-Bachi<sup>3</sup>, Y. Becherini<sup>12</sup>, B. Behera<sup>14</sup>, M. Beilicke<sup>4,\*\*</sup>, K. Bernlöhr<sup>1,5</sup>, A. Bochow<sup>1</sup>, C. Boisson<sup>6</sup>, J. Bolmont<sup>19</sup>, V. Borrel<sup>3</sup>, J. Brucker<sup>16</sup>, F. Brun<sup>19</sup>, P. Brun<sup>7</sup>, R. Bühler<sup>1</sup>, T. Bulik<sup>29</sup>, I. Büsching<sup>9</sup>, T. Boutelier<sup>17</sup>, P. M. Chadwick<sup>8</sup>, A. Charbonnier<sup>19</sup>, R. C. G. Chaves<sup>1</sup>, A. Cheesebrough<sup>8</sup>, J. Conrad<sup>31</sup>, L.-M. Chounet<sup>10</sup>, A. C. Clapson<sup>1</sup>, G. Coignet<sup>11</sup>, M. Dalton<sup>5</sup>, M. K. Daniel<sup>8</sup>, I. D. Davids<sup>22,9</sup>, B. Degrange<sup>10</sup>, C. Deil<sup>1</sup>, H. J. Dickinson<sup>8</sup>, A. Djannati-Atai<sup>12</sup>, W. Domainko<sup>1</sup>, L. O'C. Drury<sup>13</sup>, F. Dubois<sup>11</sup>, G. Dubus<sup>17</sup>, J. Dyks<sup>24</sup>, M. Dyrda<sup>28</sup>, K. Egberts<sup>1,30</sup>, P. Eger<sup>16</sup>, P. Espigat<sup>12</sup>, L. Fallon<sup>13</sup>, C. Farnier<sup>15</sup>, S. Fegan<sup>10</sup>, F. Feinstein<sup>15</sup>, A. Fiasson<sup>11</sup>, A. Förster<sup>1</sup>, G. Fontaine<sup>10</sup>, M. Füßling<sup>5</sup>, S. Gabici<sup>13</sup>, Y. A. Gallant<sup>15</sup>, L. Gérard<sup>12</sup>, D. Gerbig<sup>21</sup>, B. Giebels<sup>10</sup>, J. F. Glicenstein<sup>7</sup>, B. Glück<sup>16</sup>, P. Goret<sup>7</sup>, D. Göring<sup>16</sup>, D. Hauser<sup>14</sup>, M. Hauser<sup>14</sup>, S. Heinz<sup>16</sup>, G. Heinzlmann<sup>4</sup>, G. Henri<sup>17</sup>, G. Hermann<sup>1</sup>, J. A. Hinton<sup>25</sup>, A. Hoffmann<sup>18</sup>, W. Hofmann<sup>1</sup>, P. Hofverberg<sup>1</sup>, M. Holleran<sup>9</sup>, S. Hoppe<sup>1</sup>, D. Horns<sup>4</sup>, A. Jacholkowska<sup>19</sup>, O. C. de Jager<sup>9</sup>, C. Jahn<sup>16</sup>, I. Jung<sup>16</sup>, K. Katarzyński<sup>27</sup>, U. Katz<sup>16</sup>, S. Kaufmann<sup>14</sup>, M. Kerschhaggl<sup>5</sup>, D. Khangulyan<sup>1</sup>, B. Khélifi<sup>10</sup>, D. Keogh<sup>8</sup>, D. Klochkov<sup>18</sup>, W. Kluźniak<sup>24</sup>, T. Kneiske<sup>4</sup>, Nu. Komin<sup>7</sup>, K. Kosack<sup>7</sup>, R. Kossakowski<sup>11</sup>, G. Lamanna<sup>11</sup>, M. Lemoine-Goumard<sup>34</sup>, J.-P. Lenain<sup>6</sup>, T. Lohse<sup>5</sup>, V. Marandon<sup>12</sup>, A. Marcowith<sup>15</sup>, J. Masbou<sup>11</sup>, D. Maurin<sup>19</sup>, T. J. L. McComb<sup>8</sup>, M. C. Medina<sup>6</sup>, J. Méhault<sup>15</sup>, R. Moderski<sup>24</sup>, E. Moulin<sup>7</sup>, M. Naumann-Godo<sup>10</sup>, M. de Naurois<sup>19</sup>, D. Nedbal<sup>20</sup>, D. Nekrassov<sup>1</sup>, B. Nicholas<sup>26</sup>, J. Niemiec<sup>28</sup>, S. J. Nolan<sup>8</sup>, S. Ohm<sup>1</sup>, J.-F. Olive<sup>3</sup>, E. de Oña Wilhelmi<sup>1</sup>, K. J. Orford<sup>8</sup>, M. Ostrowski<sup>23</sup>, M. Panter<sup>1</sup>, M. Paz Arribas<sup>5</sup>, G. Pedalletti<sup>14</sup>, G. Pelletier<sup>17</sup>, P.-O. Petrucci<sup>17</sup>, S. Pita<sup>12</sup>, G. Pühlhofer<sup>18</sup>, M. Punch<sup>12</sup>, A. Quirrenbach<sup>14</sup>, B. C. Raubenheimer<sup>9</sup>, M. Raue<sup>1,33</sup>, S. M. Rayner<sup>8</sup>, O. Reimer<sup>30</sup>, M. Renaud<sup>12</sup>, R. de los Reyes<sup>1</sup>, F. Rieger<sup>1,33</sup>, J. Ripken<sup>31</sup>, L. Rob<sup>20</sup>, S. Rosier-Lees<sup>11</sup>, G. Rowell<sup>26</sup>, B. Rudak<sup>24</sup>, C. B. Rulten<sup>8</sup>, J. Ruppel<sup>21</sup>, F. Ryde<sup>32</sup>, V. Sahakian<sup>2</sup>, A. Santangelo<sup>18</sup>, R. Schlickeiser<sup>21</sup>, F. M. Schöck<sup>16</sup>, A. Schönwald<sup>5</sup>, U. Schwanke<sup>5</sup>, S. Schwarzbach<sup>18</sup>, S. Schwemmer<sup>14</sup>, A. Shalchi<sup>21</sup>, I. Sushch<sup>5</sup>, M. Sikora<sup>24</sup>, J. L. Skilton<sup>25</sup>, H. Sol<sup>6</sup>, Ł. Stawarz<sup>23</sup>, R. Steenkamp<sup>22</sup>, C. Stegmann<sup>16</sup>, F. Stinzing<sup>16</sup>, G. Superina<sup>10</sup>, A. Szostek<sup>23,17</sup>, P. H. Tam<sup>14</sup>, J.-P. Tavernet<sup>19</sup>, R. Terrier<sup>12</sup>, O. Tibolla<sup>1</sup>, M. Tluczykont<sup>4</sup>, C. van Eldik<sup>1</sup>, G. Vasileiadis<sup>15</sup>, C. Venter<sup>9</sup>, L. Venter<sup>6</sup>, J. P. Vialle<sup>11</sup>, P. Vincent<sup>19</sup>, J. Vink<sup>35</sup>, M. Vivier<sup>7</sup>, H. J. Völk<sup>1</sup>, F. Volpe<sup>1</sup>, S. Vorobiov<sup>15</sup>, S. J. Wagner<sup>14</sup>, M. Ward<sup>8</sup>, A. A. Zdziarski<sup>24</sup>, A. Zech<sup>6</sup>, and HESS collaboration

(Affiliations can be found after the references)

Received 18 December 2009 / Accepted 7 March 2010

### ABSTRACT

**Aims.** Recent theoretical predictions of the lowest very high energy (VHE) luminosity of SN 1006 are only a factor 5 below the previously published HESS upper limit, thus motivating further in-depth observations of this source.

**Methods.** Deep observations at VHE energies (above 100 GeV) were carried out with the high energy stereoscopic system (HESS) of Cherenkov Telescopes from 2003 to 2008. More than 100 h of data have been collected and subjected to an improved analysis procedure.

**Results.** Observations resulted in the detection of VHE  $\gamma$ -rays from SN 1006. The measured  $\gamma$ -ray spectrum is compatible with a power-law, the flux is of the order of 1% of that detected from the Crab Nebula, and is thus consistent with the previously established HESS upper limit. The source exhibits a bipolar morphology, which is strongly correlated with non-thermal X-rays.

**Conclusions.** Because the thickness of the VHE-shell is compatible with emission from a thin rim, particle acceleration in shock waves is likely to be the origin of the  $\gamma$ -ray signal. The measured flux level can be accounted for by inverse Compton emission, but a mixed scenario that includes leptonic and hadronic components and takes into account the ambient matter density inferred from observations also leads to a satisfactory description of the multi-wavelength spectrum.

**Key words.** gamma rays: stars – supernovae: individual: SN 1006 (G327.6+14.6)

### 1. Introduction

The source SN 1006 is the remnant of one of the few historical supernovae. It appeared in the southern sky on 1006 May 1 and

was recorded by Chinese and Arab astronomers (Stephenson & Green 2002). The remnant of this explosion was first identified at radio wavelengths on the basis of historical evidence (Gardner & Milne 1965). The evolution of its luminosity indicates that it is the result of a type Ia supernova (Schaefer 1996), probably the brightest supernova in recorded history. A distance of 2.2 kpc was derived by Winkler et al. (2003) based on comparing the optical proper motion with an estimate of the shock velocity

\* Supported by CAPES Foundation, Ministry of Education of Brazil.

\*\* Now at Washington University, St. Louis, USA.

derived from optical thermal line broadening assuming a high Mach number single-fluid shock.

Contemporary interest in the very high energy (VHE) emission from supernova remnants (SNRs) has arisen due to their association as prime candidates for Galactic cosmic-ray acceleration. Firstly, Galactic SNRs have sufficient kinetic energy to explain the estimated Galactic luminosity in cosmic rays of  $10^{40}$  erg s<sup>-1</sup>. Secondly, and more importantly, it has been shown that diffusive shock acceleration provides a viable mechanism which can efficiently accelerate charged particles in the blast waves of SNRs (e.g. Drury 1983; Blandford & Eichler 1987; Jones & Ellison 1991; Berezhko et al. 1996). Indeed, most shell-type SNRs are non-thermal radio emitters, which confirms that electrons are accelerated up to at least GeV energies. Moreover, the limb-brightened non-thermal radio emission traces the site of effective particle acceleration.

The source SN 1006 was also the first SNR in which a non-thermal component of hard X-rays was detected in the rims of the remnant by ASCA (Koyama et al. 1995) and ROSAT (Willingale et al. 1996), whereas the interior of the remnant exhibits a thermal spectrum with line emission. The hard featureless power-law spectrum strongly implies a synchrotron origin of the radiation, which in turn suggests that electrons can be accelerated up to energies of  $\sim 100$  TeV. Subsequent arcsecond resolution images by Chandra revealed a small-scale structure in the nonthermal X-ray filaments of the NE rim of SN 1006 (Bamba et al. 2003; Long et al. 2003), supporting the idea of high B-fields in the bright limbs of the remnant (Berezhko et al. 2002). An analysis of the X-ray observations from XMM-Newton by Rothenflug et al. (2004) leads to the conclusion that the magnetic field in the remnant is oriented in the NE-SW direction. The synchrotron emission would then be concentrated in regions where the shock is quasi-parallel (Völk et al. 2003).

Also,  $\gamma$ -ray observations of SN 1006 were carried out by ground-based  $\gamma$ -ray telescopes. A TeV  $\gamma$ -ray signal at the level of the Crab flux was claimed by the CANGAROO-I (Tanimori et al. 1998) and CANGAROO-II (Tanimori et al. 2001) telescopes, but subsequent stereoscopic observations of the source with the HESS telescopes in 2003 and 2004 found no evidence of VHE  $\gamma$ -ray emission and derived an upper limit of  $\Phi(>0.26$  TeV)  $< 2.4 \times 10^{-12}$  ph cm<sup>-2</sup> s<sup>-1</sup> at 99.9% confidence level (Aharonian et al. 2005). The CANGAROO-III telescope array found only an upper limit which is consistent with the HESS result (Tanimori et al. 2005).

The initial non-detection of SN 1006 in VHE  $\gamma$ -rays does not invalidate the hypothesis of nuclear particle acceleration in the shock. Indeed, the hadronic  $\gamma$ -ray flux is very sensitive to the ambient gas density  $n_H$  and hence the HESS upper limit implies a constraint on  $n_H < 0.1$  cm<sup>-3</sup> (Ksenofontov et al. 2005). Indeed, being 500 pc above the Galactic plane, the remnant is relatively isolated, and the gas density around SN 1006 was recently estimated to be around 0.085 cm<sup>-3</sup> (Katsuda et al. 2009). Ksenofontov et al. (2005) furthermore showed that the lower limit for the VHE  $\gamma$ -ray flux, which is given by the inverse Compton (IC) component derived from the integrated synchrotron flux and field amplification alone, was only a factor 5 below the HESS upper limit. These predictions promoted deep observations with the HESS telescopes.

## 2. HESS observations and analysis methods

HESS is an array of four 13 m diameter imaging atmospheric Cherenkov telescopes situated in the Khomas Highland in

Namibia at an altitude of 1800 m above sea level (Bernloehr et al. 2003; Funk et al. 2004). The source SN 1006 was observed in 2003 with the two telescopes that were operational at that time and with the complete HESS array in the years since. After run selection the data set comprises 130 h (live time) of observations, of which 18 hours were taken with two telescopes only. The latter yielded a smaller effective area than the data set recorded with the full array. For that reason they are used only in morphological studies and excluded in the spectral analysis.

The data were analysed with the *Model Analysis* (de Naurois & Rolland 2009), in which shower images of all triggered telescopes are compared to a pre-calculated model by means of a log-likelihood minimisation. The Model Analysis does not rely on any image-cleaning procedure and uses all pixels in the camera. The noise distributions in the pixels due to the night sky background are taken into account in the model fit and result in a superior treatment of shower tails. Therefore the Model Analysis results in a more precise reconstruction and better background suppression than more conventional techniques, thus leading to improved sensitivity.

Two different sets of cuts were used: The *standard cuts*, including a minimum image charge of 60 photoelectrons ( $E_{th} = 260$  GeV), cover the full energy range and are used for the spectral analysis only. The *hard cuts*, with a larger charge cut of 200 photoelectrons, result in an improved signal-to-background ratio at the expense of lower statistics and a higher threshold of 500 GeV. These are used for the studies of source morphology.

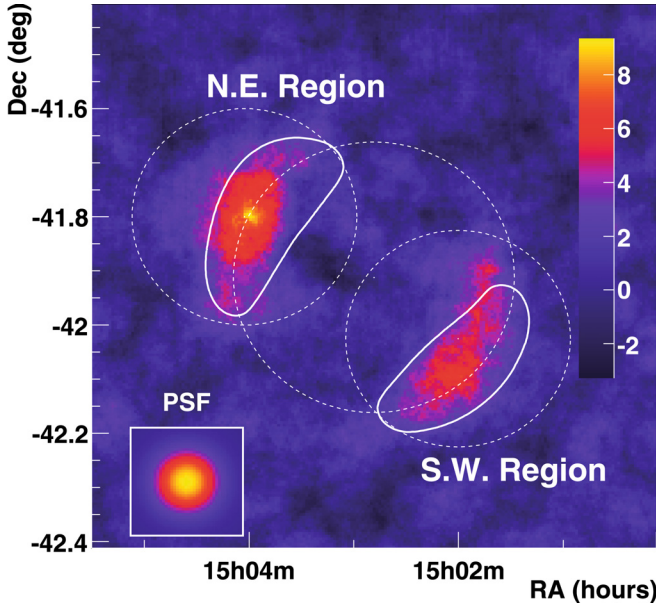
The results presented below have been cross-checked using the 3D Model Analysis (Lemoine-Goumard et al. 2006; Naumann-Godo et al. 2009). Both analyses yielded consistent results.

Significant  $\gamma$ -ray emission is detected from the direction of SN 1006, concentrated in two extended regions as shown in Fig. 1. This map shows the significance over a field-of-view of  $1^\circ \times 1^\circ$  with a pixel size of  $0.005^\circ$  obtained with hard cuts using the ring background subtraction technique (Berge et al. 2007) and a small integration radius of  $0.05^\circ$ , close to the HESS PSF of  $R_{68} = 0.064^\circ$ . As the pixel size is a factor 10 smaller than the integration radius, the bins are highly correlated. In two regions of the map the significance of the HESS observation clearly exceeds  $5\sigma$ .

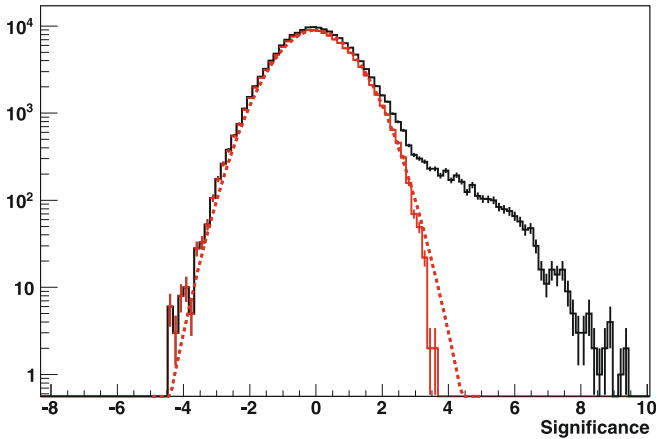
The significance distribution over the field-of-view of  $2^\circ \times 2^\circ$  is shown in Fig. 2, while Fig. 3 illustrates the area corresponding to the significance above a given level. The black histogram in both figures corresponds to the full field-of-view and exhibits strong deviation from a normal distribution at large significance values. The red histogram, restricted to the part of the field-of-view outside of the white dashed circles (Fig. 1) is compatible with a normal distribution, as denoted by the red dashed line (Fig. 2). This demonstrates that the distribution of events over the field-of-view (outside the two exclusion regions) is compatible with expectation from statistical fluctuations and that systematic effects concerning background estimation are under control.

## 3. Morphology

Two different integration regions were defined a priori from the XMM-Newton data set (Rothenflug et al. 2004): a map of the flux in the 2–4.5 keV energy range (to exclude thermal contamination) was smoothed with the HESS PSF, and regions which contained 80% of the flux were calculated. The two resulting regions, denoted as *NE Region* and *SW Region*, are displayed as white contours in Fig. 1 and coincide well with the regions of largest HESS significance.

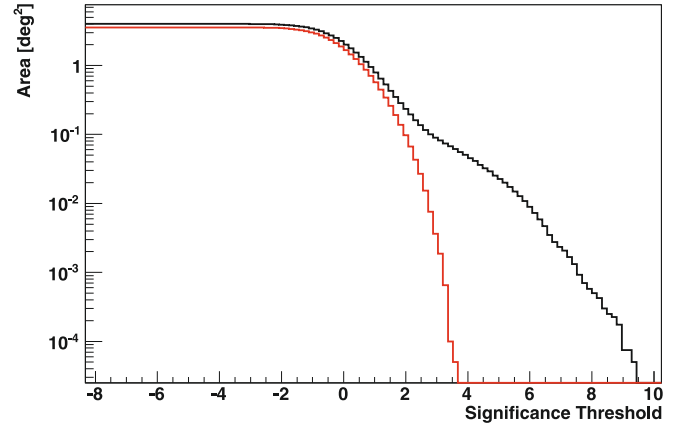


**Fig. 1.** HESS  $\gamma$ -ray significance map of SN 1006 using an integration radius of  $0.05^\circ$ . The linear colour scale is in units of standard deviations. The white solid contours correspond to the regions which contain 80% of the non-thermal X-ray emission from the XMM-Newton flux map in the 2–4.5 keV energy range after smearing with the HESS PSF, shown in the inset. The white dashed circles correspond to the regions that are excluded from background determination.



**Fig. 2.** HESS  $\gamma$ -ray significance distribution over the full field-of-view of SN 1006 (black histogram) and excluding the circular regions around the NE and SW emission regions (red histogram). A normal distribution (red dashed line) shows that the significance distribution over the rest of the field-of-view is compatible with expectation from statistical noise fluctuations.

Excess event counts and significances for both regions are given in Table 1 for the two sets of cuts. The ON photons are from the regions enclosed by the solid lines in Fig. 1, while the OFF events are taken from regions of identical shape rotated in the field-of-view of the instrument around the observation position and not intersecting the exclusion regions (enclosed by dashed lines in Fig. 1). Due to varying observation positions, the number of OFF regions varies from observation to observation. Individual observation values are combined into an average normalisation factor ( $\alpha$ ) quoted in Table 1. Similar excess event counts and significances are observed in both regions, thus attesting to the bipolar morphology of the remnant in the TeV energy range. This is a highly constraining result, because



**Fig. 3.** HESS sky area with  $\gamma$ -ray significance above some threshold as a function of its value over the full field-of-view of SN 1006 (black histogram) and excluding the circular regions around the NE and SW emission regions (red histogram).

**Table 1.** HESS excess events and significances for the two regions defined from X-ray observations.

Region	ON	OFF	$\alpha$	# $\gamma$	Significance
NE, Std Cuts	4306	25421	6.67	495	7.3
NE, Hard Cuts	619	2575	6.44	219	9.3
SW, Std Cuts	3798	26523	7.615	315	4.9
SW, Hard Cuts	548	2591	7.25	191	8.7

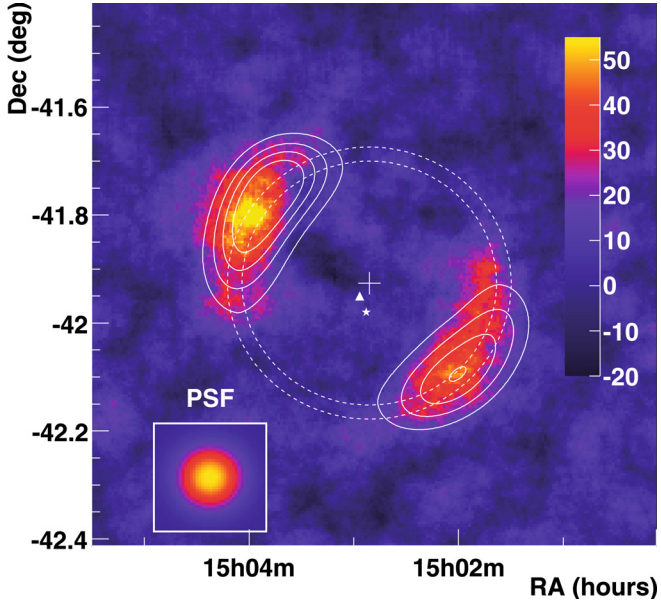
**Notes.**  $\alpha$  is the normalisation factor between OFF and ON exposures.

due to the relatively uniform target density around the remnant the HESS morphology directly reflects the distribution of high-energy particles responsible for the  $\gamma$ -ray emission.

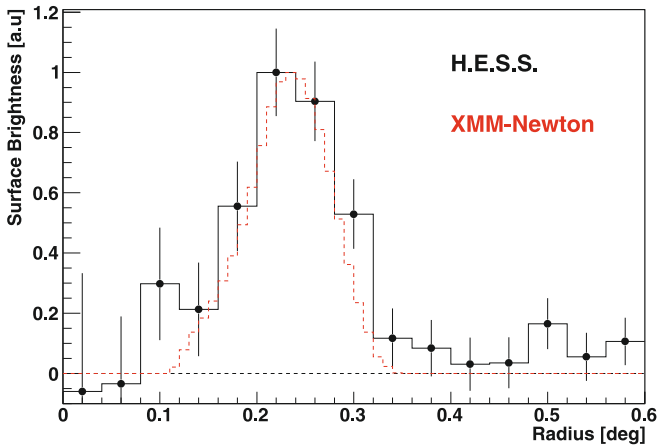
Figure 4 shows the  $\gamma$ -ray HESS excess map, produced with hard cuts and the same integration radius of  $0.05^\circ$ , overlaid with the smoothed XMM-Newton flux contours. A striking similarity between the  $\gamma$ -ray and X-ray emission regions is found. For a quantitative analysis uncorrelated radial and azimuthal profiles of the HESS excess events were derived and compared to the XMM-Newton profiles (Figs. 5 and 6). Again the XMM-Newton data were smoothed to match the HESS point spread function, and the relative normalisation was adjusted to the maximum value. Within error bars, the HESS and XMM-Newton emission profiles are almost identical, thus possibly indicating a common origin.

The geometrical X-ray centre of the SNR was derived from the unsmoothed XMM-Newton data by fitting them with a Gaussian radial profile convolved with an azimuthal profile with two Gaussian components, yielding  $15^{\text{h}}2^{\text{m}}51.1^{\text{s}}$ ,  $-41^{\text{d}}55'32.2''$  as the centre of the SNR with a radius of  $R = 0.239^\circ$  and a thickness of  $dR = 0.013^\circ$ . Figure 5 shows the radial profiles of HESS and smoothed XMM-Newton excess events from the centre of the SNR. When a Gaussian is fit to the HESS profile (Fig. 5) the shell radius is found to be  $0.24^\circ \pm 0.01^\circ$  and the width of the radial distribution is  $0.05^\circ \pm 0.01^\circ$ , which is consistent with the HESS point spread function, thereby showing that the emission region is compatible with a thin rim.

The azimuthal profile, restricted to radii  $0.12^\circ \leq r \leq 0.36^\circ$  from the centre of the SNR, is shown in Fig. 6 for HESS data and smoothed XMM-Newton data in the 2–4.5 keV energy band. The azimuth is defined clockwise with zero toward the East. The HESS profile is compatible with a superposition of two Gaussian emission regions almost at  $180^\circ$  from each other, respectively



**Fig. 4.** HESS  $\gamma$ -ray image of SN 1006. The linear colour scale is in units of excess counts per  $\pi \times (0.05^\circ)^2$ . Points within  $(0.05^\circ)^2$  are correlated. The white cross indicates the geometrical centre of the SNR obtained from XMM data as explained in the text and the dashed circles correspond to  $R \pm dR$  as derived from the fit. The white star shows the centre of the circle encompassing the whole X-ray emission as derived by Rothenflug et al. (2004) and the white triangle the centre derived by Cassam-Chenaï et al. (2008) from  $H\alpha$  data. The white contours correspond to a constant X-ray intensity as derived from the XMM-Newton flux map and smoothed to the HESS point spread function, enclosing respectively 80%, 60%, 40% and 20% of the X-ray emission. The inset shows the HESS PSF using an integration radius of  $0.05^\circ$ .

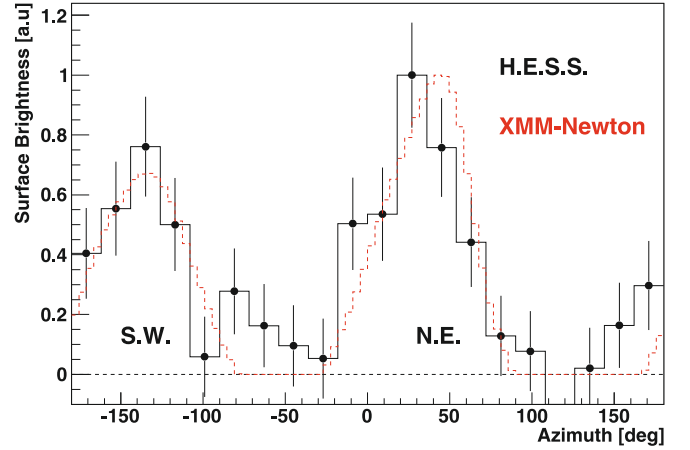


**Fig. 5.** Radial profile around the centre of the SNR obtained from HESS data and XMM-Newton data in the 2–4.5 keV energy band smoothed to HESS PSF.

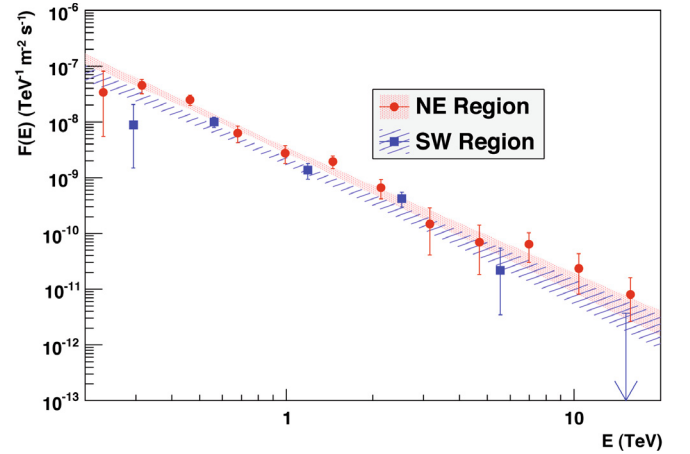
centred on  $-143.6^\circ \pm 6.1^\circ$  (SW region) and  $29.3^\circ \pm 4.0^\circ$  (NE region) and with similar widths of  $33.8^\circ \pm 7.0^\circ$  and  $27.9^\circ \pm 4.0^\circ$ .

#### 4. Spectral analysis

Differential energy spectra of the VHE  $\gamma$ -ray emission were derived for both regions above the energy threshold of  $\sim 260$  GeV. These regions correspond to 80% of the X-ray emission (after smearing with the HESS PSF) and therefore slightly underestimate the TeV emission of the full remnant.



**Fig. 6.** Azimuthal profile obtained from HESS data and XMM-Newton data in the 2–4.5 keV energy band and smoothed to HESS PSF, restricted to radii  $0.12^\circ \leq r \leq 0.36^\circ$  from the centre of the SNR. Azimuth  $0^\circ$  corresponds to East,  $90^\circ$  corresponds to North,  $180^\circ$  to West and  $-90^\circ$  to South.

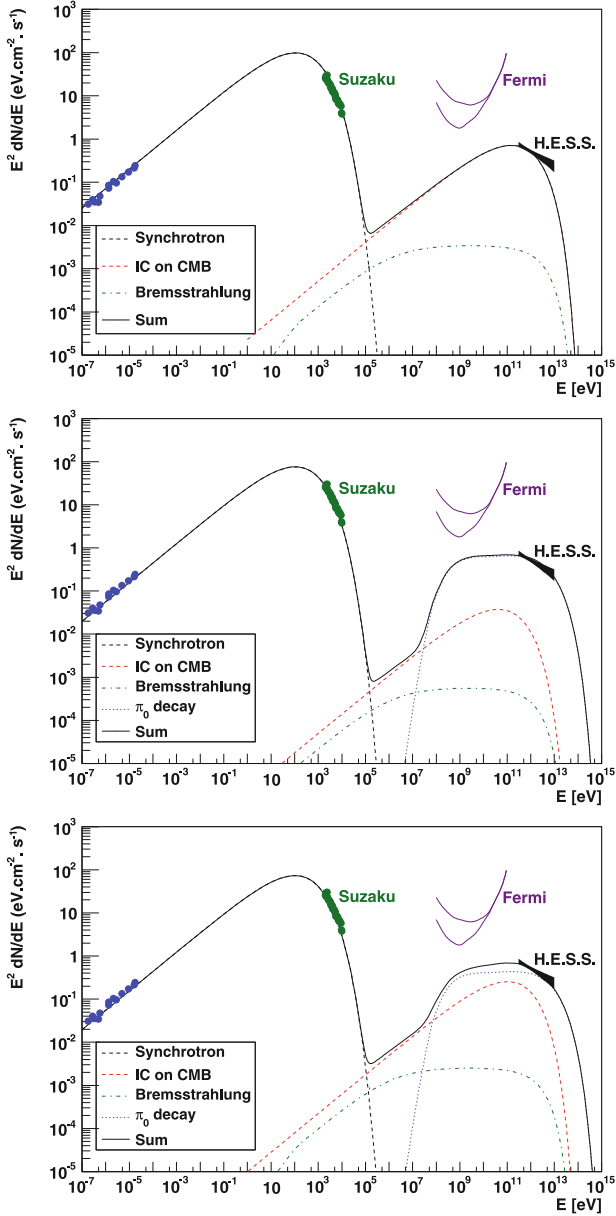


**Fig. 7.** Differential energy spectra of SN 1006 extracted from the two regions NE and SW as defined in Sect. 2. The shaded bands correspond to the range of the power-law fit, taking into account statistical errors.

**Table 2.** Fit results for power-law fits to the energy spectra.

Region	Photon index $\Gamma$	$\Phi(>1 \text{ TeV})$ ( $10^{-12} \text{ cm}^{-2} \text{ s}^{-1}$ )
NE	$2.35 \pm 0.14_{\text{stat}} \pm 0.2_{\text{syst}}$	$0.233 \pm 0.043_{\text{stat}} \pm 0.047_{\text{syst}}$
SW	$2.29 \pm 0.18_{\text{stat}} \pm 0.2_{\text{syst}}$	$0.155 \pm 0.037_{\text{stat}} \pm 0.031_{\text{syst}}$

The spectra for the NE and SW regions are compatible with power law distributions,  $F(E) \propto E^{-\Gamma}$ , with comparable photon indices  $\Gamma$  and fluxes. Confidence bands for power-law fits are shown in Fig. 7 and Table 2. The integral fluxes above 1 TeV correspond to less than 1% of the Crab flux, making SN 1006 one of the faintest known VHE sources (Table 2). The derived fluxes are well below the previously published HESS upper limits (Aharonian et al. 2005). The observed photon index  $\Gamma \approx 2.3$  is somewhat steeper than generally expected from diffusive shock acceleration theory and may indicate that the upper cut-off of the high-energy particle distribution is being observed; however, the uncertainties on the spectrum preclude definitive conclusions on this point.



**Fig. 8.** Broadband SED models of SN 1006 for a leptonic scenario (*top*), a hadronic one (*centre*) and a mixed leptonic/hadronic scenario (*bottom*). *Top*: Modelling was done by using an electron spectrum in the form of a power law with an index of 2.1, an exponential cutoff at 10 TeV and a total energy of  $W_e = 3.3 \times 10^{47}$  erg. The magnetic field amounts to  $30 \mu\text{G}$ . *Centre*: Modelling using a proton spectrum in the form of a power law with an index of 2.0, an exponential cutoff at 80 TeV and a total proton energy of  $W_p = 3.0 \times 10^{50}$  erg (using a lower energy cut off of 1 GeV). The electron/proton ratio above 1 GeV was  $K_{ep} = 1 \times 10^{-4}$  with an electron spectral index of 2.1 and cutoff energy at 5 TeV. The magnetic field amounts to  $120 \mu\text{G}$  and the average medium density is  $0.085 \text{ cm}^{-3}$ . *Bottom*: Modelling using a mixture of the above two cases. The total proton energy was  $W_p = 2.0 \times 10^{50}$  erg, with  $K_{ep} = 7 \times 10^{-3}$ , with exponential cutoffs at 8 TeV and 100 TeV for electrons and protons respectively. The magnetic field amounts to  $45 \mu\text{G}$ . The radio data Reynolds (1996), X-ray data Bamba et al. (2008) and HESS data (sum of the two regions) are indicated. The following processes have been taken into account: synchrotron radiation from primary electrons (dashed black lines), IC scattering (dotted red lines), bremsstrahlung (dot-dashed green lines) and proton-proton interactions (dotted blue lines). The Fermi/LAT sensitivity for one year is shown (pink) for Galactic (upper) and extragalactic (lower) background. The latter is more representative given that SN 1006 is  $14^\circ$  north of the Galactic plane.

## 5. Discussion

The source SN 1006 is an ideal example of a shell-type supernova remnant because it represents a type Ia supernova exploding into an approximately uniform medium and magnetic field, thereby essentially maintaining the spherical geometry of a point explosion. This can be attributed to the fact that SN 1006 is about 500 pc above the Galactic plane in a relatively clean environment, where the external gas density is rather low,  $n_H \approx 0.085 \text{ cm}^{-3}$  as indicated by Katsuda et al. (2009). Moreover, SN 1006 is one of the best-observed SNRs with a rich data-set of astronomical multi-wavelength information in radio, optical and X-rays, and all the important parameters like the ejected mass, its distance and age are fairly well-known (Cassam-Chenaï et al. 2008). For this reason, the semi-analytical models of Truelove & McKee (1999) can be approximately applied and the velocity of the shock calculated. The value of the shock velocity calculated by this means agrees well with the recent measurement in X-rays by Katsuda et al. (2009), yielding  $(0.48 \pm 0.04) \text{ arcsec yr}^{-1}$  in the synchrotron emitting regions (NE and SW), which corresponds to  $5000 \pm 400 \text{ km s}^{-1}$  for a distance of 2.2 kpc. This does not contradict the value of  $(0.28 \pm 0.008) \text{ arcsec yr}^{-1}$  measured by Winkler et al. (2003) in the optical filaments, which are situated in the NW region of the remnant. All those calculations neglect the dynamic role of accelerated particles however, which is potentially quite important.

The basic model of VHE  $\gamma$ -ray production requires particles accelerated to multi-TeV energies and a target comprising photons and/or matter of sufficient density. The close correlation between X-ray and VHE-emission points toward particle acceleration in the strong shocks revealed by the Chandra observation of the X-ray filaments. Moreover, the bipolar morphology of the VHE-emission in the NE and SW regions of the remnant supports a major result of diffusive shock acceleration theory, according to which efficient injection of suprathermal downstream charged nuclear ions is only possible for sufficiently small angles between the ambient magnetic field and shock normal, and therefore a higher density of accelerated nuclei at the poles is predicted (Ellison et al. 1995; Malkov & Völk 1995; Völk et al. 2003).

Radio (Reynolds 1996) and X-ray (Bamba et al. 2008) data integrated over the full remnant were combined with VHE  $\gamma$ -ray measurements to model the spectral energy distribution of the source in a simple one-zone stationary model. For the sake of consistency, the VHE  $\gamma$ -ray energy distribution was determined from the sum of the two previously defined regions. In this phenomenological model the current distribution of particles (electrons and/or protons) is prescribed with a given spectral shape corresponding to a power law with an exponential cutoff, from which emission due to synchrotron radiation, bremsstrahlung and IC scattering on the Cosmic Microwave Background (CMB) photons is computed. The  $\pi^0$  production through interactions of protons with the ambient matter are obtained following Kelner et al. (2006).

It is clear that this model oversimplifies the acceleration process in an expanding remnant, as discussed by e.g. Drury et al. (1989) and Berezhko et al. (1996). In addition one must include the uncertainties introduced by the dynamics of the ejecta, the nonuniform structure of the ambient medium and the complexities of the reaction of the accelerated particles on both the magnetic field and the remnant dynamics. This is of importance when comparing the data to the model results below.

Assuming first a purely leptonic form (Fig. 8, top), the radio and X-ray data constrain the synchrotron part of the SED in a

way that the slope of the electron spectrum, which is particularly sensitive to the slope of the radio data, is bounded between 2.0 and 2.2, while the cutoff energy of electrons is limited to about 10 TeV by the X-ray data assuming a magnetic field of 30  $\mu\text{G}$ . With the particle spectrum constrained by radio and X-ray data, the resulting magnetic field needs to be higher than 30  $\mu\text{G}$  so that the IC emission does not exceed the measured VHE-flux. A magnetic field of 30  $\mu\text{G}$  implies that assuming Bohm diffusion, electrons of 1 TeV are confined in a shell of the width of 10 arcseconds, which is much smaller than the PSF of the HESS instrument and is therefore compatible with the radial profile shown in Fig. 5. However, while this simple leptonic scenario can account for the measured VHE  $\gamma$ -ray flux, it fails to reproduce the slope of the VHE spectrum, which is much harder than the expectations from the IC process (see Fig. 8 top). But it should be noted that non-linear Fermi shock acceleration as reviewed by Malkov & Drury (2001) usually predicts curved cosmic ray spectra with different spectral shapes for protons and electrons. There is a hint of spectral curvature observed in the case of Tycho's and Kepler's supernova remnants in the radio regime Reynolds & Ellison (1992). For SN 1006 there is also an indication of the curvature of the electron spectrum in the GeV to TeV energy range Allen et al. (2008). These non-linear effects, which also might well introduce a spectral curvature in the VHE regime, are not addressed by this simple model.

In a second dominantly hadronic model (Fig. 8, middle) TeV emission results from proton-proton interactions with  $\pi^0$ -production and subsequent decay, whereas the X-ray emission is still produced by leptonic interactions. A rough representation of the effect of spectral curvature is included by allowing for a slightly harder spectral index for protons than for radio-emitting electrons. A lower electron fraction allows us to account for the X-ray and radio emission with a higher field value of 120  $\mu\text{G}$ , which is consistent with magnetic field amplification at the shock, as indicated by the above-mentioned measurements of thin X-ray filaments. Assuming an average medium density of 0.085  $\text{cm}^{-3}$  and a proton spectral index of 2.0 with a cutoff energy of 80 TeV (inferred from the maximum energy of TeV photons), this model requires a high overall fraction of about 20% of the supernova energy to be converted into high-energy protons. Here  $E_{\text{SN}} = 1.4 \times 10^{51}$  erg was assumed, near the upper end of the typical range of type Ia SN explosion energies (e.g. Woosley et al. 2007), as the assumed density, observed radius and known age of SN 1006 appear to require a higher than average explosion energy. Given that the VHE emission is concentrated in polar regions of the shell, the local shock acceleration efficiency would then be several times higher than this fraction.

In a third example (mixed model), hadronic and leptonic processes contribute almost equally to the very high-energy emission. The electron spectrum is similar to the aforementioned leptonic case and the total proton energy is set to 14% of the mechanical supernova energy with the electron/proton ratio  $K_{\text{ep}} = 3.9 \times 10^{-3}$ , thus leaving the magnetic field and the cutoff energy of protons the only free parameters. In the example shown in Fig. 8 (bottom panel) the magnetic field amounts to 45  $\mu\text{G}$  and the cutoff energy of protons is 100 TeV. This example illustrates that in this simple one-zone case it is possible to reproduce all the multi-wavelength data on SN 1006 to a reasonable degree of accuracy including the slope of the VHE-data. While these considerations cannot exclude any of the astrophysical scenarios, they serve as a quantitative illustration of the various alternatives.

Values of total electron and proton energy, cutoff energy and magnetic field obtained in the three aforementioned cases are

**Table 3.** Parameters used in the spectral energy modelling shown in Fig. 8.

Model	$E_{\text{cut,e}}$ [TeV]	$E_{\text{cut,p}}$ [TeV]	$W_e$ [ $10^{47}$ erg]	$W_p$ [ $10^{50}$ erg]	$B$ [ $\mu\text{G}$ ]
Leptonic	10	–	3.3	–	30
Hadronic	5	80	0.3	3.0	120
Mixed	8	100	1.4	2.0	45

**Notes.** Spectral indices have been fixed to 2.1 and 2.0 respectively for electrons and protons.

summarised in Table 3. These parameters yield very similar values when the NE and SW regions are adjusted independently.

More elaborate models using e.g. a nonlinear kinetic acceleration theory Berezhko et al. (2009) go beyond the simple approach developed here and lead to precise predictions that could be quantitatively tested against the data. Several effects which were not included in the simple model above would alter the total energy in accelerated particles required for the hadronic component. Beyond the spectral curvature mentioned previously, these include the higher compression of the target matter induced by the dynamical reaction of the accelerated particles, and consideration of the heavier nuclei composition of the accelerated hadrons instead of the pure protons assumed here. Measurements in the GeV-energy range would be pivotal to distinguish between the different scenarios. Unfortunately, the sensitivity of the Fermi Large Area Telescope for one year as given in Atwood et al. (2009) is of a factor of the order of 10 too low (depending on the model and the exact diffuse background flux) to measure the predicted flux at 1 GeV as shown in Fig. 8, which makes the detection of SN 1006 by Fermi LAT rather unlikely.

## 6. Conclusions

Very high energy  $\gamma$ -rays from SN 1006 have been detected by HESS. The measured flux above 1 TeV is of the order of 1% of that detected from the Crab Nebula and therefore compatible with the previously published upper limit Aharonian et al. (2005). The bipolar morphology apparent in  $\gamma$ -rays is consistent with the non-thermal emission regions also visible in X-rays. As the VHE-shell is compatible with a scenario of thin rim emission, particle acceleration in the very narrow X-ray filaments, which are signatures of shocks, is also likely to be at the origin of the  $\gamma$ -ray signal. The measured flux level can be accounted for by inverse Compton emission assuming a magnetic field of about 30  $\mu\text{G}$ . A mixed scenario including leptonic and hadronic processes and taking into account the ambient matter density estimated from observation also leads to a satisfactory description of the multi-wavelength spectrum, assuming a high proton-acceleration efficiency. None of the models can be excluded at the level of modelling presented here.

*Acknowledgements.* The support of the Namibian authorities and of the University of Namibia in facilitating the construction and operation of HESS is gratefully acknowledged, as is the support by the German Ministry for Education and Research (BMBF), the Max Planck Society, the French Ministry for Research, the CNRS-IN2P3 and the Astroparticle Interdisciplinary Programme of the CNRS, the UK Science and Technology Facilities Council (STFC), the IPNP of the Charles University, the Polish Ministry of Science and Higher Education, the South African Department of Science and Technology and National Research Foundation, and by the University of Namibia. We appreciate the excellent work of the technical support staff in Berlin, Durham, Hamburg, Heidelberg, Palaiseau, Paris, Saclay, and in Namibia in the construction and operation of the equipment.

## References

- Aharonian, F., Akhperjanian, A. G., Aye, K.-M., et al. (HESS Collaboration) 2005, *A&A*, 437, 135
- Allen, G. E., Houck, J. C., & Sturmer, S. J. 2008, *ApJ*, 683, 773
- Atwood, W. B., Abdo, A. A., Ackermann, M., et al. 2009, *ApJ*, 697, 1071
- Bamba, A., Yamazaki, R., Keno, M., & Koyama, K. 2003, *ApJ*, 589, 827
- Bamba, A., Fukazawa, Y., Hiraga, J. S. et al. 2008, *PASJ*, 60, S153
- Berezhko, E. G., Elshin, V. K., & Ksenofontov, L. T. 1996, *J. Exp. Theor. Phys.*, 82, 1
- Berezhko, E. G., Ksenofontov, L. T., & Völk, H. 2002, *A&A*, 395, 943
- Berezhko, E. G., Ksenofontov, L. T., & Völk, H. 2009, *A&A*, 505, 169
- Berge, D., Funk, S., & Hinton, J. 2007, *A&A*, 466, 1219
- Bernlöhr, K., Carrol, O., Cornils R., et al. 2003, *Astropart. Phys.*, 20, 111
- Blandford, R. D., & Eichler, D. 1987, *Phys. Rep.*, 154, 1
- Cassam-Chenaï, G., Hughes, J. P., Reynoso, E. M., Badenes C., & Moffett, D. 2008, *ApJ*, 680, 1180
- Drury, L. O'C. 1983, *Rep. Prog. Phys.*, 46, 973
- Drury, L. O'C., Markiewicz, W. J., & Völk, H. J. 1989, *A&A*, 225, 179
- Ellison, D. C., Baring, M. G., & Jones, F. C. 1995, *ApJ*, 453, 873
- Funk, S., Hermann, G., Hinton, J., et al. 2004, *Astropart. Phys.*, 22, 285
- Gardner, F. F., & Milne, D. K. 1965, *AJ*, 70, 754
- Jones, F. C., & Ellison, D. C. 1991, *Space Sci. Rev.*, 58, 259
- Katsuda, S., Petre, R., Long, K. S., et al. 2009, *ApJ*, 692, L105
- Kelner, S. R., Aharonian, F. A., & Bugayov, V. V. 2006, *Phys. Rev. D*, 74, 034018
- Koyama, K., Petre, R., Gotthelf E. V., et al. 1995, *Nature*, 378, 378
- Ksenofontov, L. T., Berezhko E. G., & Völk, H. J. 2005, *A&A*, 443, 973
- Lemoine-Goumard, M., Degrange, B., & Tluczykont, M. 2006, *Astropart. Phys.*, 25, 195
- Long, K. S., Reynolds, S. P., Raymond, J. C. et al. 2003, *ApJ*, 586, L1162
- Malkov, M. A., & Völk, H.-J. 1995, *A&A*, 300, 605
- Malkov, M. A., & Drury, L. O'C. 2001, *Rep. Prog. Phys.*, 64, 429
- Naumann-Godo, M., Lemoine-Goumard, M., & Degrange, B. 2009, *Astropart. Phys.*, 31, 421
- de Naurois, M., & Rolland, L. 2009, *Astropart. Phys.*, 32, 231
- Reynolds, S. P. 1996, *ApJ*, 459, L13
- Reynolds, S. P., & Ellison, D. C. 1992, *ApJ*, 399, L75
- Rothenflug, R., Ballet, J., Dubner, G., et al. 2004, *A&A*, 425, 121
- Schaefer, B. E. 1996, *ApJ*, 459, 438
- Stephenson, F. R., & Green, D. A. 2002, *Historical supernovae and their remnants* (Oxford: Clarendon Press)
- Tanimori, T., Hayami, Y., Kamei, S., et al. 1998, *ApJ*, 497, L25
- Tanimori, T., et al. 2001, *CRR Rep*, 478, 33
- Tanimori, T., et al. 2005, 29th International Cosmic Ray Conference, ICRC Conf. Proc., Pune, 4, 215
- Truelove, J. K., & McKee, C. F. 1999, *ApJS*, 120, 299
- Völk, H. E., Berezhko, G., & Ksenofontov, L. T. 2003, *A&A*, 409, 563
- Willingale, R., West, R. J., Pye, J. P., & Steward, G. C. 1996, *MNRAS*, 278, 749
- Winkler, P. F., Gupta, G., & Long, K. S. 2003, *ApJ*, 585, 324
- Woolsey, S. E., Kasen, D., Blinnikov, S., & Sorokina, E. 2007, *ApJ*, 662, 487
- <sup>9</sup> Unit for Space Physics, North-West University, Potchefstroom 2520, South Africa
- <sup>10</sup> Laboratoire Leprince-Ringuet, École Polytechnique, CNRS/IN2P3, 91128 Palaiseau, France  
e-mail: naumann-godo@in2p3.fr
- <sup>11</sup> Laboratoire d'Annecy-le-Vieux de Physique des Particules, Université de Savoie, CNRS/IN2P3, 74941 Annecy-le-Vieux, France
- <sup>12</sup> Astroparticule et Cosmologie (APC), CNRS, Université Paris 7 Denis Diderot, 10, Rue Alice Domon et Léonie Duquet, 75205 Paris Cedex 13, UMR 7164 (CNRS, Université Paris VII, CEA, Observatoire de Paris), France
- <sup>13</sup> Dublin Institute for Advanced Studies, 5 Merrion Square, Dublin 2, Ireland
- <sup>14</sup> Landessternwarte, Universität Heidelberg, Königstuhl, 69117 Heidelberg, Germany
- <sup>15</sup> Laboratoire de Physique Théorique et Astroparticules, Université Montpellier 2, CNRS/IN2P3, CC 70, Place Eugène Bataillon, 34095 Montpellier Cedex 5, France
- <sup>16</sup> Universität Erlangen-Nürnberg, Physikalisches Institut, Erwin-Rommel-Str. 1, 91058 Erlangen, Germany
- <sup>17</sup> Laboratoire d'Astrophysique de Grenoble, INSU/CNRS, Université Joseph Fourier, BP 53, 38041 Grenoble Cedex 9, France
- <sup>18</sup> Institut für Astronomie und Astrophysik, Universität Tübingen, Sand 1, 72076 Tübingen, Germany
- <sup>19</sup> LPNHE, Université Pierre et Marie Curie Paris 6, Université Denis Diderot Paris 7, CNRS/IN2P3, 4 place Jussieu, 75252 Paris Cedex 5, France  
e-mail: denauroi@in2p3.fr
- <sup>20</sup> Charles University, Faculty of Mathematics and Physics, Institute of Particle and Nuclear Physics, V Holešovičkách 2, 18000 Prague 8, Czech Republic
- <sup>21</sup> Institut für Theoretische Physik, Lehrstuhl IV: Weltraum und Astrophysik, Ruhr-Universität Bochum, 44780 Bochum, Germany
- <sup>22</sup> University of Namibia, Private Bag 13301, Windhoek, Namibia
- <sup>23</sup> Obserwatorium Astronomiczne, Uniwersytet Jagielloński, ul. Orla 171, 30-244 Kraków, Poland
- <sup>24</sup> Nicolaus Copernicus Astronomical Center, ul. Bartycka 18, 00-716 Warsaw, Poland
- <sup>25</sup> School of Physics & Astronomy, University of Leeds, Leeds LS2 9JT, UK
- <sup>26</sup> School of Chemistry & Physics, University of Adelaide, Adelaide 5005, Australia
- <sup>27</sup> Toruń Centre for Astronomy, Nicolaus Copernicus University, ul. Gagarina 11, 87-100 Toruń, Poland
- <sup>28</sup> Instytut Fizyki Jądrowej PAN, ul. Radzikowskiego 152, 31-342 Kraków, Poland
- <sup>29</sup> Astronomical Observatory, The University of Warsaw, Al. Ujazdowskie 4, 00-478 Warsaw, Poland
- <sup>30</sup> Institut für Astro- und Teilchenphysik, Leopold-Franzens-Universität Innsbruck, 6020 Innsbruck, Austria
- <sup>31</sup> Oskar Klein Centre, Department of Physics, Stockholm University, Albanova University Center, 10691 Stockholm, Sweden
- <sup>32</sup> Oskar Klein Centre, Department of Physics, Royal Institute of Technology (KTH), Albanova, 10691 Stockholm, Sweden
- <sup>33</sup> European Associated Laboratory for Gamma-Ray Astronomy, jointly supported by CNRS and MPG
- <sup>34</sup> Université Bordeaux 1; CNRS/IN2P3; Centre d'Études Nucléaires de Bordeaux Gradignan, UMR 5797, Chemin du Solarium, BP 120, 33175 Gradignan, France
- <sup>35</sup> Astronomical Institute Utrecht, University of Utrecht, PO Box 80000, 3508 TA Utrecht, The Netherlands

<sup>1</sup> Max-Planck-Institut für Kernphysik, PO Box 103980, 69029 Heidelberg, Germany

<sup>2</sup> Yerevan Physics Institute, 2 Alikhanian Brothers St., 375036 Yerevan, Armenia

<sup>3</sup> Centre d'Étude Spatiale des Rayonnements, CNRS/UPS, 9 Av. du Colonel Roche, BP 4346, 31029 Toulouse Cedex 4, France

<sup>4</sup> Universität Hamburg, Institut für Experimentalphysik, Luruper Chaussee 149, 22761 Hamburg, Germany

<sup>5</sup> Institut für Physik, Humboldt-Universität zu Berlin, Newtonstr. 15, 12489 Berlin, Germany

<sup>6</sup> LUTH, Observatoire de Paris, CNRS, Université Paris Diderot, 5 place Jules Janssen, 92190 Meudon, France

<sup>7</sup> IRFU/DSM/CEA, CE Saclay, 91191 Gif-sur-Yvette, Cedex, France

<sup>8</sup> University of Durham, Department of Physics, South Road, Durham DH1 3LE, UK