



HAL
open science

Antidepressants increase human hippocampal neurogenesis by activating the glucocorticoid receptor

Carmine Pariante, Christoph Anacker, Patricia A Zunszain, Annamaria Cattaneo, Livia A Carvalho, Sandrine Thuret, Jack Price, Michael J Garabedian

► To cite this version:

Carmine Pariante, Christoph Anacker, Patricia A Zunszain, Annamaria Cattaneo, Livia A Carvalho, et al.. Antidepressants increase human hippocampal neurogenesis by activating the glucocorticoid receptor. *Molecular Psychiatry*, 2011, 10.1038/mp.2011.26 . hal-00631253

HAL Id: hal-00631253

<https://hal.science/hal-00631253>

Submitted on 12 Oct 2011

HAL is a multi-disciplinary open access archive for the deposit and dissemination of scientific research documents, whether they are published or not. The documents may come from teaching and research institutions in France or abroad, or from public or private research centers.

L'archive ouverte pluridisciplinaire **HAL**, est destinée au dépôt et à la diffusion de documents scientifiques de niveau recherche, publiés ou non, émanant des établissements d'enseignement et de recherche français ou étrangers, des laboratoires publics ou privés.

Antidepressants increase human hippocampal neurogenesis by activating the glucocorticoid receptor

Revised February 8th, 2011

Christoph Anacker, MSc^{1,2,3}, Patricia A. Zunszain, PhD¹, Annamaria Cattaneo,
PhD^{1,4}, Livia A. Carvalho, PhD¹, Michael J. Garabedian, PhD⁵,
Sandrine Thuret, PhD^{3,*}, Jack Price, PhD³, and Carmine M. Pariante, MD, PhD^{1,2,*}

¹ King's College London, Institute of Psychiatry, Section of Perinatal Psychiatry and Stress, Psychiatry and Immunology (SPI-lab), Department of Psychological Medicine, 125 Coldharbour Lane, SE5 9NU, London, UK

² National Institute for Health Research "Biomedical Research Centre for Mental Health", Institute of Psychiatry and South London and Maudsley NHS Foundation Trust, London, UK

³ King's College London, Institute of Psychiatry, Centre for the Cellular Basis of Behaviour (CCBB), 125 Coldharbour Lane, SE5 9NU, London, UK

⁴ Genetics Unit, IRCCS San Giovanni di Dio, Fatebenefratelli, Brescia, Italy

⁵ Department of Microbiology, NYU School of Medicine, 550 First Avenue, New York, NY 10016

***Correspondence should be addressed to:**

Carmine M. Pariante, MD, MRCPsych, PhD
Head of Stress, Psychiatry and Immunology Laboratory (SPI-Lab),
Institute of Psychiatry, King's College London, UK
125 Coldharbour Lane
London SE5 9NU, UK
Email: carmine.pariante@kcl.ac.uk
Telephone number: +44(0)2078480807

Sandrine Thuret, PhD
Centre for the Cellular Basis of Behaviour and MRC Centre for
Neurodegeneration Research,
Institute of Psychiatry, King's College London, UK
125 Coldharbour Lane,
London SE5 9NU, UK
Email: sandrine.1.thuret@kcl.ac.uk

Running Title: Antidepressants, neurogenesis and glucocorticoid receptor

Conflict of interest: Prof. Jack Price acted as a consultant and received payment from ReNeuron Group within the last 2 years.

Acknowledgements: Funded by a studentship to C. Anacker from the NIHR “Biomedical Research Centre for Mental Health”, Institute of Psychiatry and South London and Maudsley NHS Foundation Trust, London, UK; a Clinician Scientist Fellowship from the Medical Research Council, UK; and a grant from the Commission of European Communities 7th Framework Programme Collaborative Project Grant Agreement n°22963 (Mood Inflammation) to C.M. Pariante. S. Thuret is supported in part by a grant from Research Councils UK. M.J. Garabedian is supported in part by a grant from the NIH (R01MH086651).

Abstract: Antidepressants increase adult hippocampal neurogenesis in animal models, but the underlying molecular mechanisms are unknown. Here we used human hippocampal progenitor cells to investigate the molecular pathways involved in the antidepressant-induced modulation of neurogenesis. Because our previous studies have shown that antidepressants regulate glucocorticoid receptor (GR) function, we specifically tested whether the GR may be involved in the effects of these drugs on neurogenesis. We found that treatment (for 3-10 days) with the antidepressant, sertraline, increased neuronal differentiation via a GR-dependent mechanism. Specifically, sertraline increased both immature, doublecortin (Dcx)-positive neuroblasts (+16%), and mature, microtubulin-associated protein-2 (MAP2)-positive neurons (+26%). This effect was abolished by the GR-antagonist, RU486. Interestingly, progenitor cell proliferation, as investigated by 5'-bromodeoxyuridine (BrdU) incorporation, was only increased when cells were co-treated with sertraline and the GR-agonist, dexamethasone, (+14%) an effect which was also abolished by RU486. Furthermore, the phosphodiesterase type 4 (PDE4)-inhibitor, rolipram, enhanced the effects of sertraline, whereas the protein kinase A (PKA)-inhibitor, H89, suppressed the effects of sertraline. Indeed, sertraline increased GR transactivation, modified GR phosphorylation, and increased expression of the GR-regulated cyclin-dependent kinase-2 (CDK2) inhibitors, p27^{Kip1} and p57^{Kip2}. In conclusion, our data suggest that the antidepressant, sertraline, increases human hippocampal neurogenesis via a GR-dependent mechanism that requires PKA-signaling, GR phosphorylation, and activation of a specific set of genes. Our data point towards an important role for the GR in the antidepressant-induced modulation of neurogenesis in humans.

Key-words: adult hippocampal neurogenesis; depression; glucocorticoids; neuroplasticity; stem cells.

Introduction

Several studies have shown that antidepressants increase hippocampal neurogenesis in both animals and humans,^{1,2,3,4,5} and whether this increase in neurogenesis is necessary to overcome behavioral deficits in animal models of depression is being intensely debated.^{5-9,10,11,12,13, 14,15,16} However, the molecular pathways underlying such effects have not been described to date. The effects of antidepressants on hippocampal neurogenesis have been demonstrated for different, chemically unrelated classes of antidepressants,¹ suggesting that a common molecular mechanism may underlie their neurogenic potential. Identifying such a mechanism would allow us to modulate neurogenesis and thereby possibly counteract some of the neurobiological disturbances in depression.

Notably, recent studies have suggested that glucocorticoids are involved in the neurogenic action of antidepressants.^{12,17} For example, one study has observed that antidepressants increase hippocampal neurogenesis only in mice that are co-treated with glucocorticoid hormones, but not in control mice.¹² The potential role of glucocorticoids in antidepressant-induced neurogenesis is also consistent with an extensive literature, some from our own group, which shows that antidepressants directly regulate the function of the glucocorticoid receptor (GR).^{18,19,20,21,22,23, 24} The GR is a ligand-activated nuclear transcription factor. Upon ligand binding, the GR translocates into the nucleus, binds to glucocorticoid response elements (GREs) on the DNA and subsequently activates gene transcription (so called transactivation). Multiple kinases have been reported to differentially phosphorylate the GR at its serine residues, S203, S211 and S226, an effect which regulates GR nuclear translocation and GR-dependent gene transcription.^{25,26,27-29} Studies by us and others

have shown that antidepressants also induce GR nuclear translocation and transactivation, which is, at least in part, mediated by the cyclic AMP (cAMP)/protein kinase A (PKA) cascade.^{21,22,23, 24,30,31,32,33} Moreover, the intracellular availability of cAMP is tightly regulated by phosphodiesterase type 4 (PDE4); and, consistent with PKA-dependent regulation of the GR, the PDE4 inhibitor, rolipram, enhances GR activation by antidepressants.³⁰

Considering this body of evidence, we hypothesized that antidepressants modulate adult hippocampal neurogenesis via a GR-dependent mechanism that requires PKA-signaling and GR phosphorylation. To test this hypothesis in a clinically-relevant model, we have used hippocampal progenitor cells from humans. Using this *in vitro* model, we have been able to separate the direct effects of antidepressants on progenitor cells from any potential indirect effects which would be present in an *in vivo* model. Moreover, we have examined the differential effects of antidepressants (and glucocorticoid hormones) on progenitor cell proliferation and differentiation, as well as on GR phosphorylation, transactivation, and subsequent changes in gene expression. In all our experiments, we have used the selective serotonin reuptake inhibitor (SSRI), sertraline, which has recently been described as one of the most clinically effective antidepressants.³⁴ Confirmatory replication experiments have been conducted also using the tricyclic antidepressants, amitriptyline and clomipramine.

Materials and Methods

Cell Culture

The multipotent, human hippocampal progenitor cell line HPC03A/07 (provided by ReNeuron Ltd., Surrey, UK) was used for all experiments. Further information on this cell line and media components is available in the Supplementary Materials.

Differentiation assay

To assess changes in neuronal differentiation, HPC03A/07 cells were plated on black-sided 96-well plates (Nunc) at a density of 1.1×10^4 cells per well. HPC03A/07 cells were cultured in the presence of growth factors and 4-OHT for 72 hours, and then washed and cultured in media without growth factors and 4-OHT for subsequent 7 days. Cells were treated with the antidepressant sertraline (1 μ M), the GR-agonists, dexamethasone (1 μ M) and cortisol (100 μ M), the GR-antagonist RU486 (50 nM), the PDE4-inhibitor rolipram (100 nM) or the PKA-inhibitor H89 (50 nM). For these experiments, cells were treated during the initial proliferation phase and the subsequent differentiation phase (total treatment of 10 days), or only during the proliferation phase (72 hours), or only during the differentiation phase (7 days). At the end of the total incubation time (10 days), cells were fixed with 4% paraformaldehyde (PFA) for 20 min at room-temperature.

Proliferation assay

To assess progenitor cell proliferation, HPC03A/07 cells were plated as described above, and cultured for 72 hours in the presence of growth factors and 4-OHT. The synthetic nucleotide 5'-bromodeoxyuridine (BrdU, 10 μ M) was added to the culture

media 4 hours before the end of the incubation, and cells were fixed as described above.

Immunocytochemistry

Neuronal differentiation was assessed by doublecortin (Dcx), microtubulin-associated protein-2 (MAP2) and neuron-specific class III β -tubulin (TuJ1) immunocytochemistry (Figure 1a, Supplementary Fig. 2a). Specificity of the MAP2 antibody for mature neurons in our culture was confirmed by co-labeling experiments and Western Blotting (Supplementary Fig. 11). Briefly, PFA-fixed cells were incubated in blocking solution (5% normal goat serum (NGS), Alpha Diagnostics, San Antonio, Texas) in PBS containing 0.3% Triton-X for 2 hours at room temperature, and with primary antibodies (rabbit anti-Dcx, 1:1000; mouse anti-MAP-2 [HM], 1:500, Abcam, Cambridge, UK; rabbit anti-TuJ1, 1:500, Sigma, St-Louis, MO) at 4°C over night. Cells were incubated sequentially in blocking solution for 30min, secondary antibodies (Alexa 594 goat anti-rabbit; 1:1000; Alexa 488 goat anti-mouse, 1:500, Invitrogen, Paisley, UK) for 1 hour, and Hoechst 33342 dye (0.01 mg/ml, Invitrogen) for 5 min at room temperature. The number of Dcx, MAP2 and TuJ1 positive cells over total Hoechst 33342 positive cells was counted in an unbiased setup with an inverted microscope (IX70, Olympus, Hamburg, Germany) and ImageJ 1.41 software. To assess progenitor cell proliferation, BrdU containing cells were incubated with hydrochloric acid (HCl, 2 N) for 15 min at room temperature, blocking solution for 60 min at room temperature, primary antibody (rat anti-BrdU, Serotec, Oxford, UK. 1:500) at 4°C over night, and secondary antibody (Alexa 488 goat anti-rat, 1:500, Invitrogen) for 2 hours at room temperature. The number of BrdU-positive cells over total Hoechst 33342-positive cells was determined as described above (see

Figure 1a). Negative controls were incubated with unspecific mouse IgGs (1:500, control for MAP-2), rabbit IgGs (1:500, control for Dcx and TuJ1) or rat IgGs (1:500, control for BrdU) in place of the specific primary antibody (see Figure 1a).

Western Blot analysis of GR phosphorylation

To assess changes in GR phosphorylation, HPC03A/07 cells were treated for 1 hour, 6 hours and 12 hours. Cells were washed with ice cold PBS containing phosphatase inhibitors (Pierce, Rockford, IL), scraped carefully from the flask and centrifuged in a pre-cooled centrifuge for 10 min at 3000rpm at 4°C. Cell pellets were resuspended in protein extraction buffer (20mM Tris-HCl, 150mM NaCl, 1mM EDTA, 1mM EGTA, 1% TritonX-100, 2nM calyculin A (Cell Signaling, Danvers, MA), 1x protease and phosphatase inhibitors (Pierce, Rockford, IL)), and incubated for 15 min at 4°C. Protein lysates were centrifuged for 15min at 14,000g at 4°C. Protein concentrations were quantified using a bicinchoninic acid (BCA) colorimetric assay system (Merck, Nottingham, UK) (see Supplementary Materials). Protein samples containing 50µg of total protein were boiled for 10min at 72°C in 1x NuPAGE[®] LDS sample buffer (Invitrogen) and 1x NuPAGE[®] sample reducing agent (Invitrogen), and subjected to reducing SDS-PAGE on 10% NuPAGE[®] Bis-Tris gels for 1 hour at 200V. Proteins were electrophoretically transferred to Immuno-Blot[™] PVDF membranes (Bio-Rad laboratories, Hercules, CA) at 110V for 1.5 hours at 4°C. Transfer efficiency was controlled by Ponceau S staining and by pre-stained protein standards. Unspecific binding sites were blocked for 1h in 5% BSA in TBS and membranes were immunoprobed with the polyclonal rabbit anti-P-S203 (1:10000) and anti-P-S226 (1:1000) antibodies (both from Dr. Michael J. Garabedian), anti-P-S211 antibody (1:500; abcam), anti-GR59 antibody (1:500, Fisher) and anti-beta-actin

antibody (1:500, Biolegend, San Diego, CA) in blocking solution at 4°C over night. Membranes were washed with TBS containing 0.1% Tween-20 (TBST) and incubated with a HRP-conjugated swine anti-rabbit secondary antibody (1:2000, DAKO, Glostrup, Denmark), in 5% non-fat dry milk in TBS, for 1h at room temperature. Membranes were washed in TBST and proteins were visualized with enhanced chemiluminescence (ECL) detection system (GE Healthcare, UK).

GR transactivation assay

To determine changes in GR transactivation, HPC03A/07 cells were treated with sertraline for 1 hour, 6 hours, 12 hours, 24 hours and 72 hours. Nuclear protein extracts were obtained using a commercially available nuclear extraction kit (Active Motif, Rixensart, Belgium). GR transactivation was analyzed using the ELISA based TransAM GR™ method (Active Motif) according to the manufacturer's instructions (see Supplementary Methods).

Gene expression analysis

RNA was isolated using RNeasy mini kit (Qiagen, Crawley, UK) and processed for gene expression analysis by quantitative Real-Time PCR using the SYBR Green method (see Supplementary Methods). Each sample was assayed in duplicate and each target gene (GR, GR α , p27^{Kip1}, p57^{Kip2}, p21^{Cip1}, cyclin-dependent kinase2 (CDK2), cyclin A2 (CCNA2), cyclin D1 (CCND1), p53, human murine double minute2 (HDM2), FK506 binding protein 5 (FKBP5), serum/glucocorticoid-regulated kinase 1 (SGK1), forkhead box O1 (FOXO1), growth-arrest and DNA-damage-inducible β (GADD45B), brain derived neurotrophic factor (BDNF), p11 and β -arrestin-2) was normalized to the geometric mean of the three reference genes

glyceraldehyde 3-phosphate dehydrogenase (GAPDH), beta-actin (ACTB) and beta-2-microglobulin (B2M). Pfaffl Method was used to determine relative target gene expression. Data are expressed as fold change from the vehicle treated control condition. Primer sequences are available upon request.

Drugs

All drugs and reagents were purchased from Sigma-Aldrich (St Louis, MO) unless otherwise stated. Growth factors EGF and bFGF were purchased from Peprotech (London, UK). Sertraline hydrochloride and rolipram were dissolved in 100% dimethyl sulfoxide (DMSO); dexamethasone, hydrocortisone and RU486 were dissolved in 100% ethanol (EtOH); H89 dihydrochloride hydrate, amitriptyline hydrochloride and clomipramine hydrochloride were dissolved in sterile, deionized water. BrdU was dissolved in phosphate-buffered saline (PBS) fresh before use.

Statistical Analysis

Data are presented as mean \pm SEM. All statistical analyses were performed with GraphPad Prism 4.03 on independent biological replicates (indicated as n). One-Way ANOVA with Newman-Keuls post hoc test was used for multiple comparisons among treatment groups. Student's *t*-test was used to compare means of two independent treatment groups. P-values <0.05 were considered significant.

Results

Antidepressants and glucocorticoids regulate neuronal differentiation of human hippocampal progenitor cells

To investigate the effects of antidepressants on neuronal differentiation, we treated human hippocampal progenitor cells (HPC03A/07) with sertraline for 72 hours during proliferation, and for subsequent 7 days of differentiation. Treatment with sertraline (1 μ M) increased the number of MAP2-positive neurons (by 28%; Fig. 1b, left white column) but did not significantly alter the number of Dcx-positive neuroblasts (Fig. 1b, right white column). The specific GR-agonist dexamethasone (1 μ M) decreased the number of MAP2-positive neurons and of Dcx-positive neuroblasts (by 27% and 25%, respectively; Fig. 1b, striped columns). Treatment with cortisol induced the same effects of dexamethasone (Supplementary Fig. 1a). Co-treatment of sertraline (1 μ M) and dexamethasone (1 μ M) abolished the reduction in MAP2 and Dcx-positive cells (Fig. 1b, squared columns).

We also wanted to test whether treatment with sertraline during progenitor cell proliferation is sufficient to induce neuronal differentiation. We thus treated cells only during the proliferation phase, but not during the subsequent differentiation phase. Under these conditions, sertraline did not alter the number of MAP2-positive neurons (Fig. 1c, left white column) but increased the number of Dcx-positive neuroblasts (by 16%; Fig. 1c, right white column), indicating that sertraline initiates neuronal differentiation by an effect on progenitor cells, but only induces neuronal maturation if continuously present also during neuronal differentiation (as shown in Fig. 1b). Dexamethasone reduced the number of MAP2-positive neurons and of Dcx-positive

neuroblasts (by 28% and 27%, respectively; Fig. 1c, striped column), an effect which was abolished by sertraline co-treatment (Fig. 1c, squared columns). Again, cortisol had the same effects of dexamethasone (Supplementary Fig 1b).

Interestingly, when we treated progenitor cells only during the differentiation phase (7 days), but not during the preceding proliferation phase (72 hours), neither sertraline nor dexamethasone (or cortisol) altered the number of MAP2-positive neurons or of Dcx-positive neuroblasts (see Fig. 1d and Supplementary Fig. 1c). Taken together, these data indicate that the effects of antidepressants on proliferating progenitor cells are essential to induce neuronal differentiation into Dcx-positive neuroblasts, but not sufficient to promote their maturation into MAP2-positive neurons. Additional experiments in which cells were immunostained for the pan-neuronal marker TuJ1 confirmed these findings (see Supplementary Results and Supplementary Fig. 2).

The effects of antidepressants on neurogenesis are dependent on the GR

We specifically wanted to test whether the GR is involved in the antidepressant-induced changes in neurogenesis. We therefore co-treated progenitor cells with sertraline and the GR-antagonist RU486 (50 nM), during both proliferation and differentiation. RU486 abolished the sertraline-induced increase in the number of MAP2-positive neurons (Fig. 2a, white columns), thus confirming a role for the GR in the neurogenic action of sertraline. As expected, RU486 also eliminated the dexamethasone- (and the cortisol-) induced decrease in MAP2-positive neurons (Fig. 2a, striped columns, Supplementary Fig. 1). Furthermore, and consistent with the data described above, RU486 abolished the sertraline-induced increase in Dcx-positive neuroblasts when cells were treated only during the proliferation phase but not during

the subsequent differentiation phase (Fig. 2b, white columns). Taken together, these data support the notion that sertraline induces neuronal differentiation and promotes neuronal maturation via a GR-dependent effect.

The effects of antidepressants on neurogenesis are mediated by PKA-signaling

Considering the role of PKA-signaling in antidepressant drug action, we then wanted to examine whether the effects of sertraline on neurogenesis are mediated by the PDE4/PKA-signaling cascade. Therefore, we co-treated cells with sertraline and the PKA-inhibitor, H89 (50 nM), or the PDE4-inhibitor, rolipram (100 nM), which enhances PKA activity by increasing cAMP levels. If treated during proliferation and differentiation, rolipram enhanced the effect of sertraline on MAP2-positive neurons (+ 43% vs. sertraline alone), whereas H89 abolished it (Fig 3a, white columns).

Interestingly, rolipram also counteracted the dexamethasone-induced reduction in MAP2-positive neurons, an effect which resembles the action of sertraline (Fig 3a, striped columns). Likewise, if cells were treated only during the proliferation phase, rolipram enhanced the sertraline-induced increase in Dcx-positive neuroblasts (+ 105% vs. sertraline alone) while H89 abolished this effect (Fig. 3b, white columns). Rolipram also counteracted the dexamethasone-induced reduction in Dcx-positive neuroblasts, which again resembles the action of sertraline (Fig. 3b, striped columns).

Antidepressants regulate human hippocampal progenitor cell proliferation

In all previous experiments, we examined the effects of sertraline on neuronal differentiation. In order to study the effects on cell proliferation, we treated progenitor cells with sertraline for 72 hours, and incorporated BrdU (10 μ M) during the last 4 hours of incubation. Treatment with sertraline decreased the number of BrdU-positive

cells (by 16%; Fig. 4a, left white column), which supports the notion that progenitor cells stop proliferating in order to start to develop into neurons (as displayed in Fig. 1). Again, as for the effects on neuronal differentiation, the effect of sertraline on progenitor proliferation was abolished by RU486 co-treatment (Fig. 4a, right white column). Dexamethasone also reduced the number of BrdU-positive cells (by 20%), an effect which was again abolished by RU486 (Fig. 4a, striped columns). A similar effect was observed using cortisol (Supplementary Fig. 3a, black columns). Interestingly, proliferation was significantly increased only when progenitor cells were co-treated with sertraline and dexamethasone (+14%; Fig. 4a, squared columns) (or sertraline and cortisol, Supplementary Fig. 3a, squared columns). This effect was again abolished by RU486 (Fig. 4a, squared columns).

The same results were obtained using lower concentrations of BrdU (1 μ M) (Supplementary Fig. 4), using Ki67 immunocytochemistry (Supplementary Methods and Supplementary Fig. 12), or using the tricyclic antidepressants, amitriptyline (1 μ M) and clomipramine (1 μ M) (Supplementary Fig. 5).

Finally, we wanted to investigate whether the effects of sertraline on cell proliferation also require PKA-signaling. Indeed, rolipram enhanced the sertraline-induced reduction in cell proliferation (+37% vs. sertraline alone), whereas H89 inhibited it (-41% vs. sertraline alone; Fig. 4b, white columns). Moreover, co-treatment with rolipram and dexamethasone significantly increased proliferation (+17% vs. vehicle; Fig. 4b, striped columns), which again resembles the effect of sertraline and dexamethasone co-treatment. Finally, rolipram further increased proliferation upon co-treatment with sertraline and dexamethasone (+59% vs. dexamethasone +

sertraline), and this effect was abolished by H89 (Fig. 4c, squared columns). These results support the notion that the effects of sertraline on cell proliferation, as those on neuronal differentiation, are mediated by PDE4/PKA-signaling. It is important to note that rolipram did not change cell proliferation at the concentration used in these experiments (i.e., 100 nM). However, higher concentrations of rolipram (10 μ M) did indeed decrease cell proliferation via a GR-dependent effect (Supplementary Fig. 6), further supporting a role for the interaction of PDE4/PKA and GR on neurogenesis.

Antidepressants modulate GR phosphorylation via PKA-signaling

In the experiments above, we have demonstrated that sertraline, dexamethasone, and sertraline and dexamethasone co-treatment, have profoundly different effects on neurogenesis, but all these effects are mediated by activation of the GR. One potential explanation for these results is differential regulation of GR phosphorylation by these three different treatment conditions. Therefore, we investigated GR phosphorylation at its serine residues S203, S211 and S226 at 1, 6 and 12 hours of treatment. Our data indeed show that sertraline, dexamethasone, and sertraline and dexamethasone co-treatment, activate distinct patterns of GR phosphorylation.

At the S203 residue, sertraline decreases GR phosphorylation after 1 hour of treatment (0.5 fold compared to control; Figure 5a, first white column), while it increases phosphorylation at 6 hours and 12 hours (both by 1.6 fold, white columns).

In line with our data showing that the antidepressant effect on neurogenesis is dependent on PKA, inhibition of PKA by H89 abolishes all sertraline-induced changes in S203 phosphorylation of the GR (Figure 5a). In contrast, treatment with dexamethasone has the opposite effect: it induces S203 phosphorylation after 1 hour

of treatment (1.6 fold; Figure 5a, first striped column) and it decreases phosphorylation after 6 hours (by 0.4 fold). Sertraline and dexamethasone co-treatment shows yet a third time-dependent phosphorylation profile: While no changes in S203 phosphorylation are observed after 1 hour (Figure 5a; first squared column), phosphorylation is increased at 6 hours and 12 hours (by 1.5 fold and 1.7 fold, respectively; squared columns). These co-treatment effects are again blocked by H89. H89 alone did not show any effect at the concentration used (data not shown).

Similar differential effects of the three treatment conditions are present at the S211 phosphosite. Sertraline alone does not induce changes in S211 phosphorylation at any time point (Figure 5b; white columns). In contrast, dexamethasone strongly induces phosphorylation at S211 at 1, 6 and 12 hours of treatment (by 9 fold, 2 fold and 3 fold, respectively; striped columns). Interestingly, co-treatment with sertraline and dexamethasone induces hyperphosphorylation at S211 to levels higher than those induced by dexamethasone alone (12 fold at 1 hour, 2.5 fold at 6 hours, 4 fold at 12 hours; squared columns). This hyperphosphorylation at S211 is also counteracted by H89, confirming again that the effect of sertraline on GR phosphorylation is indeed mediated by PKA-signaling (Figure 5b).

No significant treatment effects were observed for phosphorylation at the S226 phosphosite (Supplementary Figure 9).

Antidepressants induce GR transactivation and enhance expression of the GR-dependent genes p27^{Kip1} and p57^{Kip2}

To further elucidate the molecular mechanisms underlying the differential effects of sertraline, dexamethasone, and sertraline and dexamethasone co-treatment on neurogenesis, we compared the effects of these three treatments on gene expression of: the CDK2 inhibitors, p27^{Kip1}, p57^{Kip2} and p21^{Cip1}; the cell cycle regulating genes p53, CCNA2, CCND1 and HDM2; and the glucocorticoid- and antidepressant-responsive genes, FKBP5, SGK1, FOXO1, GADD45B, GR, GR α , p11 and β -arrestin-2. These genes were chosen because they have all recently been implicated in antidepressant drug action and neurogenesis.^{35-37 36-38,39,12, 40-42,43,44,45, 46,47,48,49} We conducted these experiments during cell proliferation, because, as described above, all effects (including those on differentiation) were initiated during the proliferation phase .

Gene expression analysis revealed that the three treatment conditions indeed activate distinct gene expression profiles. Details of the gene expression profiles and gene interactions for the three treatment conditions (at 6, 12, 24, 48 and 72 hours) are described in Figure 5, Supplementary Results and Supplementary Figures 7 and 8. Here we summarize the main findings.

Sertraline increased expression of the CDK2 inhibitors, p27^{Kip1} and p57^{Kip2} (Fig. 5c,e), an effect that was particularly prominent after 12 hours of treatment. Indeed, at this 12 hour time point, sertraline also induced GR transactivation (+20%, Fig. 5g; an effect which was abolished by H89, Fig. 5h) and reduced GR-expression (GR α mRNA by -30%, GR mRNA by -40%, GR protein by -50%; also blocked by H89;

Supplementary Fig. 7). The increased expression of p27^{Kip1} and p57^{Kip2} was also blocked by RU486 after 12 hours of treatment (Fig. 5d,f). Moreover, sertraline increased p11 and β -arrestin-2 (Supplementary Fig. 8l,m), and reduced GADD45B gene expression (Supplementary Fig. 8j).

In contrast, dexamethasone reduced p27^{Kip1} and p57^{Kip2} (Fig. 5c,e) and upregulated GADD45B, FKBP5, SGK1, and FOXO1 (Supplementary Fig.8g-j).

The only genes which were regulated only by sertraline and dexamethasone co-treatment were the cell-cycle promoting genes, CCND1 and HDM2, which were both upregulated by this co-treatment (Supplementary Figure 8e,f).

Discussion

Here we identify for the first time that the antidepressant-induced changes in neurogenesis are dependent on the GR. Specifically, the SSRI antidepressant, sertraline, increases neuronal differentiation and promotes neuronal maturation of human hippocampal progenitor cells via a GR-dependent mechanism that is associated with GR phosphorylation via PKA-signaling. Interestingly, this effect is only observed when sertraline is present during the proliferation phase, and it is accompanied by exit of cells from the cell cycle, as shown by reduced proliferation and increased GR-dependent expression of the CDK2 inhibitors, p27^{Kip1} and p57^{Kip2}.

We and others have previously shown that antidepressants, including SSRIs, induce GR nuclear translocation,^{50,21,22} modulate GR-dependent gene transcription,^{21, 24, 50,30}

and change GR expression in cell culture,^{51,52,53, 54,55,19} animals^{19, 52,56,57,36,58,59-61} and humans.^{19, 62,63,64} Here we identify for the first time a critical role for the GR in the antidepressant effects on neurogenesis: first, the sertraline-induced changes in neuronal differentiation and progenitor cell proliferation are abolished by the GR antagonist, RU486; and second, sertraline modulates GR phosphorylation, induces GR transactivation and changes the expression of GR-regulated genes relevant to neurogenesis (see below).

Surprisingly, sertraline (like amitriptyline and clomipramine) increases proliferation *only* in the presence of glucocorticoids (dexamethasone or cortisol), but not by itself. The strength of our *in vitro* model is that it separates the direct effects of antidepressants on progenitor cells from the indirect effects which occur *in vivo*. Notably, increased hippocampal cell proliferation by antidepressant treatment in animals occurs always in the context of endogenous glucocorticoid production – which is not present in our *in vitro* system, unless when cells are co-treated. Indeed, some animal studies have reported that administration of exogenous glucocorticoids, or circadian fluctuations of endogenous glucocorticoids, are required for increased hippocampal cell proliferation upon antidepressant treatment.^{12,17} Moreover, a study on human post-mortem brain tissue has found that antidepressants increase the number of neural progenitor cells in patients with major depression to levels above those present in controls, and depressed patients are generally characterized by elevated endogenous levels of glucocorticoids.⁴ Taken together, our *in vitro* findings and the above mentioned *in vivo* studies indicate a pivotal role of the GR in the effects of antidepressants on hippocampal progenitor cells. It is important, however, to emphasize that our findings also demonstrate that the molecular processes which lead

to increased neuronal differentiation are activated directly by antidepressants alone and do not require glucocorticoids. Our data suggest that such complex GR-dependent regulation of cell fate is the result of differential GR phosphorylation and GR-dependent gene expression by antidepressants, glucocorticoids, and by antidepressant and glucocorticoid co-treatment. Indeed, different GR phosphoisoforms have been reported to selectively occupy different GR target genes, which may therefore explain the diverse GR-dependent effects on gene expression and neurogenesis that we observed in our study (see below).^{26, 65-68}

Further investigation of the molecular signaling mechanisms which underlie the effect of antidepressants on neurogenesis showed that sertraline increases GR transactivation after 12 hours of treatment. At this time-point, expression of the CDK2 inhibitors, p27^{Kip1} and p57^{Kip2}, was strongly increased, and this increase was blocked by RU486. p27^{Kip1} and p57^{Kip2} are GR-target genes which promote cell cycle exit and increase neuronal differentiation in the developing rat brain.^{39,38,69} Therefore, increased expression of these genes is consistent with our findings (discussed above) which show that sertraline decreases proliferation and initiates neuronal differentiation already during the proliferation phase. It is also of note that sertraline decreased GR expression (both at the mRNA and the protein level) at the same time point at which it induced GR transactivation. This is in line with reports from the literature in both cell culture and animal studies,^{23,51,61} and results from the increased GR transactivation.^{19, 23, 24} Finally, sertraline increased expression of p11 and β -arrestin-2, which have both recently been implicated in the antidepressant effects on neurogenesis *in vivo*.^{12,40,42,43} Interestingly, the cell cycle promoting genes CCND1 and HDM2 were upregulated only by sertraline and dexamethasone co-treatment, the

only condition which increases cell proliferation. In contrast, dexamethasone increased expression of the cell cycle inhibiting genes, FOXO1 and GADD45B, which may explain the reduced cell proliferation and reduced neuronal differentiation with this treatment. See also Supplementary Discussion ('Gene interactions') and Supplementary Fig. 13 for further discussion and a summary model.

Previous studies have proposed that antidepressants modulate GR-function by cAMP/PKA-signaling.^{30,31} Our data confirm and extend this model, by showing that the GR-dependent changes in neurogenesis upon sertraline treatment are mediated by PKA. Specifically, the PDE4-inhibitor, rolipram, which increases cAMP levels and thus leads to higher PKA activity, mimics and enhances the effects of sertraline on neuronal differentiation and progenitor proliferation. Accordingly, the PKA inhibitor, H89, inhibits the effects of sertraline. Furthermore, the sertraline-induced changes in GR phosphorylation and GR transactivation are also abolished by inhibition of PKA. One potential mechanism by which sertraline may cause this PKA activation is by liberating G-protein alpha(s) subunits from membrane-associated lipid rafts.^{70, 71, 72, 73} The subsequent cAMP production and PKA activation may then ultimately induce the GR phosphorylation, GR transactivation and GR-dependent gene transcription which we observed in our study.^{19, 66, 74, 25, 26} Interestingly, such a mechanism may be independent of monoamine reuptake systems, and could thus explain how neurogenesis is modulated by antidepressants of different pharmacological classes³ (and, in our experiments, by both the SSRI, sertraline, and the tricyclic antidepressants, amitriptyline and clomipramine).

In conclusion, our data suggest that antidepressants regulate differentiation and proliferation of human hippocampal progenitor cells by a GR-dependent mechanism that requires PKA-signaling. This is accompanied by changes in GR phosphorylation and GR-dependent gene transcription, including increased expression of p27^{Kip1} and p57^{Kip2}. Of note, our findings point towards a complex regulation of neurogenesis by antidepressants, with different GR-dependent mechanisms which lead to enhanced cell proliferation without changes in neuronal differentiation, or enhanced neuronal differentiation in the presence of decreased cell proliferation. It will be important for future studies to elucidate the impact of progenitor proliferation vs. neuronal differentiation on depression and other mental illnesses. Moreover, modulation of GR phosphorylation and GR-dependent gene transcription may represent a future strategy of antidepressant drug treatment to overcome neurogenesis related disturbances in depression.

Supplementary information is available at *Molecular Psychiatry's* website

Bibliography

1. Duman RS. Role of neurotrophic factors in the etiology and treatment of mood disorders. *Neuromolecular Med* 2004; **5**(1): 11-25.
2. Wang JW, David DJ, Monckton JE, Battaglia F, Hen R. Chronic fluoxetine stimulates maturation and synaptic plasticity of adult-born hippocampal granule cells. *J Neurosci* 2008; **28**(6): 1374-1384.
3. Malberg JE, Eisch AJ, Nestler EJ, Duman RS. Chronic antidepressant treatment increases neurogenesis in adult rat hippocampus. *J Neurosci* 2000; **20**(24): 9104-9110.
4. Boldrini M, Underwood MD, Hen R, Rosoklija GB, Dwork AJ, John Mann J *et al.* Antidepressants increase neural progenitor cells in the human hippocampus. *Neuropsychopharmacology* 2009; **34**(11): 2376-2389.
5. Jacobs BL, van Praag H, Gage FH. Adult brain neurogenesis and psychiatry: a novel theory of depression. *Mol Psychiatry* 2000; **5**(3): 262-269.
6. Huang GJ, Bannerman D, Flint J. Chronic fluoxetine treatment alters behavior, but not adult hippocampal neurogenesis, in BALB/cJ mice. *Mol Psychiatry* 2008; **13**(2): 119-121.
7. Tfilin M, Sudai E, Merenlender A, Gispan I, Yadid G, Turgeman G. Mesenchymal stem cells increase hippocampal neurogenesis and counteract depressive-like behavior. *Mol Psychiatry* 2009.
8. Montero-Pedrazuela A, Venero C, Lavado-Autric R, Fernandez-Lamo I, Garcia-Verdugo JM, Bernal J *et al.* Modulation of adult hippocampal neurogenesis by thyroid hormones: implications in depressive-like behavior. *Mol Psychiatry* 2006; **11**(4): 361-371.
9. Santarelli L, Saxe M, Gross C, Surget A, Battaglia F, Dulawa S *et al.* Requirement of hippocampal neurogenesis for the behavioral effects of antidepressants. *Science* 2003; **301**(5634): 805-809.
10. Surget A, Saxe M, Leman S, Ibarguen-Vargas Y, Chalon S, Griebel G *et al.* Drug-dependent requirement of hippocampal neurogenesis in a model of depression and of antidepressant reversal. *Biol Psychiatry* 2008; **64**(4): 293-301.
11. Bessa JM, Ferreira D, Melo I, Marques F, Cerqueira JJ, Palha JA *et al.* The mood-improving actions of antidepressants do not depend on neurogenesis but are associated with neuronal remodeling. *Mol Psychiatry* 2009; **14**(8): 764-773, 739.
12. David DJ, Samuels BA, Rainer Q, Wang JW, Marsteller D, Mendez I *et al.* Neurogenesis-dependent and -independent effects of fluoxetine in an animal model of anxiety/depression. *Neuron* 2009; **62**(4): 479-493.

13. Parihar VK, Hattiangady B, Kuruba R, Shuai B, Shetty AK. Predictable chronic mild stress improves mood, hippocampal neurogenesis and memory. *Mol Psychiatry* 2009.
14. Schloesser RJ, Lehmann M, Martinowich K, Manji HK, Herkenham M. Environmental enrichment requires adult neurogenesis to facilitate the recovery from psychosocial stress. *Mol Psychiatry*.
15. Revest JM, Dupret D, Koehl M, Funk-Reiter C, Grosjean N, Piazza PV *et al*. Adult hippocampal neurogenesis is involved in anxiety-related behaviors. *Mol Psychiatry* 2009; **14**(10): 959-967.
16. Lucassen PJ, Stumpel MW, Wang Q, Aronica E. Decreased numbers of progenitor cells but no response to antidepressant drugs in the hippocampus of elderly depressed patients. *Neuropharmacology*; **58**(6): 940-949.
17. Huang GJ, Herbert J. Stimulation of neurogenesis in the hippocampus of the adult rat by fluoxetine requires rhythmic change in corticosterone. *Biol Psychiatry* 2006; **59**(7): 619-624.
18. Pariante CM, Lightman SL. The HPA axis in major depression: classical theories and new developments. *Trends Neurosci* 2008; **31**(9): 464-468.
19. Anacker C, Zunszain PA, Carvalho LA, Pariante CM. The glucocorticoid receptor: Pivot of depression and of antidepressant treatment? *Psychoneuroendocrinology*.
20. Zunszain PA, Anacker C, Cattaneo A, Carvalho LA, Pariante CM. Glucocorticoids, cytokines and brain abnormalities in depression. *Prog Neuropsychopharmacol Biol Psychiatry*.
21. Pariante CM, Pearce BD, Pisell TL, Owens MJ, Miller AH. Steroid-independent translocation of the glucocorticoid receptor by the antidepressant desipramine. *Mol Pharmacol* 1997; **52**(4): 571-581.
22. Funato H, Kobayashi A, Watanabe Y. Differential effects of antidepressants on dexamethasone-induced nuclear translocation and expression of glucocorticoid receptor. *Brain Res* 2006; **1117**(1): 125-134.
23. Pariante CM, Hye A, Williamson R, Makoff A, Lovestone S, Kerwin RW. The antidepressant clomipramine regulates cortisol intracellular concentrations and glucocorticoid receptor expression in fibroblasts and rat primary neurones. *Neuropsychopharmacology* 2003; **28**(9): 1553-1561.
24. Pariante CM, Kim RB, Makoff A, Kerwin RW. Antidepressant fluoxetine enhances glucocorticoid receptor function in vitro by modulating membrane steroid transporters. *Br J Pharmacol* 2003; **139**(6): 1111-1118.

25. Wang Z, Frederick J, Garabedian MJ. Deciphering the phosphorylation "code" of the glucocorticoid receptor in vivo. *J Biol Chem* 2002; **277**(29): 26573-26580.
26. Galliher-Beckley AJ, Williams JG, Collins JB, Cidlowski JA. Glycogen synthase kinase 3 β -mediated serine phosphorylation of the human glucocorticoid receptor redirects gene expression profiles. *Mol Cell Biol* 2008; **28**(24): 7309-7322.
27. Takabe S, Mochizuki K, Goda T. De-phosphorylation of GR at Ser203 in nuclei associates with GR nuclear translocation and GLUT5 gene expression in Caco-2 cells. *Arch Biochem Biophys* 2008; **475**(1): 1-6.
28. Orti E, Hu LM, Munck A. Kinetics of glucocorticoid receptor phosphorylation in intact cells. Evidence for hormone-induced hyperphosphorylation after activation and recycling of hyperphosphorylated receptors. *J Biol Chem* 1993; **268**(11): 7779-7784.
29. Mason SA, Housley PR. Site-directed mutagenesis of the phosphorylation sites in the mouse glucocorticoid receptor. *J Biol Chem* 1993; **268**(29): 21501-21504.
30. Miller AH, Vogt GJ, Pearce BD. The phosphodiesterase type 4 inhibitor, rolipram, enhances glucocorticoid receptor function. *Neuropsychopharmacology* 2002; **27**(6): 939-948.
31. Rangarajan PN, Umesono K, Evans RM. Modulation of glucocorticoid receptor function by protein kinase A. *Mol Endocrinol* 1992; **6**(9): 1451-1457.
32. Eickelberg O, Roth M, Lorx R, Bruce V, Rudiger J, Johnson M *et al.* Ligand-independent activation of the glucocorticoid receptor by beta2-adrenergic receptor agonists in primary human lung fibroblasts and vascular smooth muscle cells. *J Biol Chem* 1999; **274**(2): 1005-1010.
33. Blendy JA. The role of CREB in depression and antidepressant treatment. *Biol Psychiatry* 2006; **59**(12): 1144-1150.
34. Cipriani A, Furukawa TA, Salanti G, Geddes JR, Higgins JP, Churchill R *et al.* Comparative efficacy and acceptability of 12 new-generation antidepressants: a multiple-treatments meta-analysis. *Lancet* 2009; **373**(9665): 746-758.
35. Chesnokova V, Pechnick RN. Antidepressants and Cdk inhibitors: releasing the brake on neurogenesis? *Cell Cycle* 2008; **7**(15): 2321-2326.
36. Pechnick RN, Zonis S, Wawrowsky K, Pourmorady J, Chesnokova V. p21Cip1 restricts neuronal proliferation in the subgranular zone of the dentate gyrus of the hippocampus. *Proc Natl Acad Sci U S A* 2008; **105**(4): 1358-1363.

37. Taliatz D, Stall N, Dar DE, Zangen A. Knockdown of brain-derived neurotrophic factor in specific brain sites precipitates behaviors associated with depression and reduces neurogenesis. *Mol Psychiatry*; **15**(1): 80-92.
38. Shin MH, Mavila N, Wang WH, Vega Alvarez S, Hall MC, Andrisani OM. Time-dependent activation of Phox2a by the cyclic AMP pathway modulates onset and duration of p27Kip1 transcription. *Mol Cell Biol* 2009; **29**(18): 4878-4890.
39. Ye W, Mairet-Coello G, Pasoreck E, Diccico-Bloom E. Patterns of p57Kip2 expression in embryonic rat brain suggest roles in progenitor cell cycle exit and neuronal differentiation. *Dev Neurobiol* 2009; **69**(1): 1-21.
40. Egeland M, Warner-Schmidt J, Greengard P, Svenningsson P. Neurogenic effects of fluoxetine are attenuated in p11 (S100A10) knockout mice. *Biol Psychiatry*; **67**(11): 1048-1056.
41. Golan M, Schreiber G, Avissar S. Antidepressants, beta-arrestins and GRKs: from regulation of signal desensitization to intracellular multifunctional adaptor functions. *Curr Pharm Des* 2009; **15**(14): 1699-1708.
42. Svenningsson P, Chergui K, Rachleff I, Flajolet M, Zhang X, El Yacoubi M *et al.* Alterations in 5-HT1B receptor function by p11 in depression-like states. *Science* 2006; **311**(5757): 77-80.
43. Golan M, Schreiber G, Avissar S. Antidepressants increase beta-arrestin2 ubiquitinylation and degradation by the proteasomal pathway in C6 rat glioma cells. *J Pharmacol Exp Ther*; **332**(3): 970-976.
44. Binder EB, Salyakina D, Lichtner P, Wochnik GM, Ising M, Putz B *et al.* Polymorphisms in FKBP5 are associated with increased recurrence of depressive episodes and rapid response to antidepressant treatment. *Nat Genet* 2004; **36**(12): 1319-1325.
45. Lang F, Bohmer C, Palmada M, Seebohm G, Strutz-Seebohm N, Vallon V. (Patho)physiological significance of the serum- and glucocorticoid-inducible kinase isoforms. *Physiol Rev* 2006; **86**(4): 1151-1178.
46. van Gemert NG, Meijer OC, Morsink MC, Joels M. Effect of brief corticosterone administration on SGK1 and RGS4 mRNA expression in rat hippocampus. *Stress* 2006; **9**(3): 165-170.
47. Schmidt M, Fernandez de Mattos S, van der Horst A, Klompmaker R, Kops GJ, Lam EW *et al.* Cell cycle inhibition by FoxO forkhead transcription factors involves downregulation of cyclin D. *Mol Cell Biol* 2002; **22**(22): 7842-7852.
48. Wang XW, Zhan Q, Coursen JD, Khan MA, Kontny HU, Yu L *et al.* GADD45 induction of a G2/M cell cycle checkpoint. *Proc Natl Acad Sci U S A* 1999; **96**(7): 3706-3711.

49. Chen CY, Oliner JD, Zhan Q, Fornace AJ, Jr., Vogelstein B, Kastan MB. Interactions between p53 and MDM2 in a mammalian cell cycle checkpoint pathway. *Proc Natl Acad Sci U S A* 1994; **91**(7): 2684-2688.
50. Pariante CM, Makoff A, Lovestone S, Feroli S, Heyden A, Miller AH *et al*. Antidepressants enhance glucocorticoid receptor function in vitro by modulating the membrane steroid transporters. *Br J Pharmacol* 2001; **134**(6): 1335-1343.
51. Heiske A, Jesberg J, Krieg JC, Vedder H. Differential effects of antidepressants on glucocorticoid receptors in human primary blood cells and human monocytic U-937 cells. *Neuropsychopharmacology* 2003; **28**(4): 807-817.
52. Okugawa G, Omori K, Suzukawa J, Fujiseki Y, Kinoshita T, Inagaki C. Long-term treatment with antidepressants increases glucocorticoid receptor binding and gene expression in cultured rat hippocampal neurones. *J Neuroendocrinol* 1999; **11**(11): 887-895.
53. Vedder H, Bening-Abu-Shach U, Lanquillon S, Krieg JC. Regulation of glucocorticoid receptor-mRNA in human blood cells by amitriptyline and dexamethasone. *J Psychiatr Res* 1999; **33**(4): 303-308.
54. Pepin MC, Beaulieu S, Barden N. Antidepressants regulate glucocorticoid receptor messenger RNA concentrations in primary neuronal cultures. *Brain Res Mol Brain Res* 1989; **6**(1): 77-83.
55. Lai M, McCormick JA, Chapman KE, Kelly PA, Seckl JR, Yau JL. Differential regulation of corticosteroid receptors by monoamine neurotransmitters and antidepressant drugs in primary hippocampal culture. *Neuroscience* 2003; **118**(4): 975-984.
56. Johansson IM, Bjartmar L, Marcusson J, Ross SB, Seckl JR, Olsson T. Chronic amitriptyline treatment induces hippocampal NGFI-A, glucocorticoid receptor and mineralocorticoid receptor mRNA expression in rats. *Brain Res Mol Brain Res* 1998; **62**(1): 92-95.
57. Frechilla D, Otano A, Del Rio J. Effect of chronic antidepressant treatment on transcription factor binding activity in rat hippocampus and frontal cortex. *Prog Neuropsychopharmacol Biol Psychiatry* 1998; **22**(5): 787-802.
58. Przegalinski E, Budziszewska B. The effect of long-term treatment with antidepressant drugs on the hippocampal mineralocorticoid and glucocorticoid receptors in rats. *Neurosci Lett* 1993; **161**(2): 215-218.
59. Yau JL, Noble J, Thomas S, Kerwin R, Morgan PE, Lightman S *et al*. The antidepressant desipramine requires the ABCB1 (Mdr1)-type p-glycoprotein to upregulate the glucocorticoid receptor in mice. *Neuropsychopharmacology* 2007; **32**(12): 2520-2529.

60. Yau JL, Noble J, Hibberd C, Rowe WB, Meaney MJ, Morris RG *et al.* Chronic treatment with the antidepressant amitriptyline prevents impairments in water maze learning in aging rats. *J Neurosci* 2002; **22**(4): 1436-1442.
61. Yau JL, Noble J, Hibberd C, Seckl JR. Short-term administration of fluoxetine and venlafaxine decreases corticosteroid receptor mRNA expression in the rat hippocampus. *Neurosci Lett* 2001; **306**(3): 161-164.
62. Calfa G, Kademian S, Ceschin D, Vega G, Rabinovich GA, Volosin M. Characterization and functional significance of glucocorticoid receptors in patients with major depression: modulation by antidepressant treatment. *Psychoneuroendocrinology* 2003; **28**(5): 687-701.
63. Carvalho LA, Juruena MF, Papadopoulos AS, Poon L, Kerwin R, Cleare AJ *et al.* Clomipramine in vitro reduces glucocorticoid receptor function in healthy subjects but not in patients with major depression. *Neuropsychopharmacology* 2008; **33**(13): 3182-3189.
64. Carvalho LA, Garner BA, Dew T, Fazakerley H, Pariante CM. Antidepressants, but not antipsychotics, modulate GR function in human whole blood: An insight into molecular mechanisms. *Eur Neuropsychopharmacol* 2010.
65. Blind RD, Garabedian MJ. Differential recruitment of glucocorticoid receptor phospho-isoforms to glucocorticoid-induced genes. *J Steroid Biochem Mol Biol* 2008; **109**(1-2): 150-157.
66. Chen W, Dang T, Blind RD, Wang Z, Cavasotto CN, Hittelman AB *et al.* Glucocorticoid receptor phosphorylation differentially affects target gene expression. *Mol Endocrinol* 2008; **22**(8): 1754-1766.
67. Kumar R, Calhoun WJ. Differential regulation of the transcriptional activity of the glucocorticoid receptor through site-specific phosphorylation. *Biologics* 2008; **2**(4): 845-854.
68. Webster JC, Jewell CM, Bodwell JE, Munck A, Sar M, Cidlowski JA. Mouse glucocorticoid receptor phosphorylation status influences multiple functions of the receptor protein. *J Biol Chem* 1997; **272**(14): 9287-9293.
69. Lee YS, Liu F, Segil N. A morphogenetic wave of p27Kip1 transcription directs cell cycle exit during organ of Corti development. *Development* 2006; **133**(15): 2817-2826.
70. Donati RJ, Rasenick MM. Chronic antidepressant treatment prevents accumulation of α in cholesterol-rich, cytoskeletal-associated, plasma membrane domains (lipid rafts). *Neuropsychopharmacology* 2005; **30**(7): 1238-1245.

71. Donati RJ, Dwivedi Y, Roberts RC, Conley RR, Pandey GN, Rasenick MM. Postmortem brain tissue of depressed suicides reveals increased Gs alpha localization in lipid raft domains where it is less likely to activate adenylyl cyclase. *J Neurosci* 2008; **28**(12): 3042-3050.
72. Nothdurfter C, Tanasic S, Di Benedetto B, Rammes G, Wagner EM, Kirmeier T *et al.* Impact of Lipid Raft Integrity on 5-HT(3) Receptor Function and its Modulation by Antidepressants. *Neuropsychopharmacology*.
73. Eisensamer B, Uhr M, Meyr S, Gimpl G, Deiml T, Rammes G *et al.* Antidepressants and antipsychotic drugs colocalize with 5-HT3 receptors in raft-like domains. *J Neurosci* 2005; **25**(44): 10198-10206.
74. Ismaili N, Garabedian MJ. Modulation of glucocorticoid receptor function via phosphorylation. *Ann N Y Acad Sci* 2004; **1024**: 86-101.

Figure 1

Antidepressants induce differentiation and neuronal maturation of HPC03A/07 human hippocampal progenitor cells. Immunocytochemistry (ICC) for doublecortin (Dcx) and microtubulin-associated protein-2 (MAP2) was used to assess neuronal differentiation and maturation, respectively. BrdU incorporation and immunocytochemistry was used to assess progenitor cell proliferation (a). When HPC03A/07 cells were treated during the proliferation phase (72 hours) and the subsequent differentiation phase (7 days), drug treatment had a significant effect on MAP2-positive neurons (One-Way ANOVA, $p < 0.0001$, $F_{1,4} = 62.22$, $R^2 = 0.9120$, $n = 5$) and on Dcx-positive neuroblasts (One-Way ANOVA, $p = 0.0007$, $F_{1,4} = 13.28$, $R^2 = 0.6713$, $n = 5$). Sertraline (SERT, $1 \mu\text{M}$) increased the number of MAP2-positive neurons but did not alter the number of Dcx-positive neuroblasts, whereas dexamethasone (DEX, $1 \mu\text{M}$) decreased both. No effect was observed upon co-treatment with SERT and DEX (b). When HPC03A/07 cells were treated only during the proliferation phase, drug treatment had a significant effect on MAP2-positive neurons (One-Way ANOVA, $p = 0.0022$, $F_{1,4} = 9.764$, $R^2 = 0.5824$, $n = 5$) and on Dcx-positive neuroblasts (One-Way ANOVA, $p < 0.0001$, $F_{1,4} = 44.44$, $R^2 = 0.8724$, $n = 5$). SERT increased the number of Dcx-positive neuroblasts without an effect on MAP2-positive neurons (c). Treatment only during the differentiation phase did not have an effect on MAP2-positive neurons (One-Way ANOVA, $p = 0.5699$, $F_{1,4} = 0.6184$, $R^2 = 0.1709$, $n = 5$) or on Dcx-positive neuroblasts (One-Way ANOVA, $p = 0.2146$, $F_{1,4} = 2.127$, $R^2 = 0.4596$, $n = 5$) (d). Five independent experiments were conducted on 5 independent cultures ($n = 5$), 4 wells were analyzed per treatment condition in each experiment and 3 random, non-overlapping pictures were analyzed for each well. All

data are mean \pm s.e.m. *P<0.05, **P<0.01, and ***P<0.001 compared with the corresponding vehicle treated control.

Figure 2

The effects of sertraline on neuronal differentiation are dependent on the GR. The GR-antagonist RU486 (50 nM) abolished the effect of SERT (1 μ M) and of DEX (1 μ M) on the number of MAP2-positive neurons (**a**) and on the number of Dcx-positive neuroblasts (**b**). Three independent experiments were conducted on 3 independent cultures (n=3), 4 wells were analyzed per treatment condition in each experiment, and 3 non-overlapping pictures were analyzed per well. All data are mean \pm s.e.m. *P<0.05, **P<0.01 compared with SERT or DEX-treatment alone.

Figure 3

The effects of sertraline on neuronal differentiation are mediated by PDE4/PKA-signaling. Rolipram (100 nM) increased the effect of SERT (1 μ M) on the number of MAP2-positive neurons whereas H89 abolished it. Rolipram and H89 also counteracted the effect of DEX (1 μ M) on MAP2-positive neurons (**a**). Rolipram increased the effect of SERT on the number of Dcx-positive neuroblasts whereas H89 abolished it. Rolipram also counteracted the effect of DEX (1 μ M) on Dcx-positive neuroblasts (**b**). Five independent experiments were conducted on 5 independent cultures (n=5), 4 wells were analyzed per treatment condition in each experiment and 3 random, non-overlapping pictures were analyzed for each well. All data are mean \pm s.e.m. *P<0.05, **P<0.01 compared with SERT or DEX alone.

Figure 4

Effects of sertraline on progenitor cell proliferation. SERT (1 μ M) and DEX (1 μ M) decreased the number of BrdU-positive cells. These effects were abolished by the GR-antagonist RU486 (50 nM). Co-treatment of DEX and SERT increased the number of BrdU-positive cells. This effect was also abolished by RU486 (*P<0.05, **P<0.01) (a). Rolipram (100 nM) enhanced the effect of SERT (b, **white columns**), and of SERT and DEX co-treatment (b, **squared columns**) whereas H89 (50 nM) abolished both effects. The number of BrdU-positive cells was significantly increased when cells were co-treated with rolipram and DEX (b, **striped columns**). Six independent experiments were conducted on 6 independent cultures (n=6), 4 wells were analyzed per treatment condition in each experiment and 3 random, non-overlapping pictures were analyzed for each well. All data are mean \pm s.e.m. *P<0.05, **P<0.01, and ***P<0.001 compared to the respective vehicle or as indicated.

Figure 5

Sertraline regulates GR phosphorylation, GR-mediated expression of p27^{Kip1} and p57^{Kip2}, and GR transactivation. During progenitor cell proliferation, SERT (1 μ M) decreases GR phosphorylation at S203 after 1 hour of treatment, but increases S203 phosphorylation after 6 hours and 12 hours (a, **white columns**). These effects are counteracted by H89. DEX increases S203 phosphorylation after 1 hour and decreases S203 phosphorylation after 6 hours (a, **striped columns**). DEX+SERT co-treatment does not change S203 phosphorylation at 1 hour, but increases S203 phosphorylation at 6 hours and 12 hours (a, **squared columns**). These effects of DEX+SERT are also abolished by H89. SERT does not change GR phosphorylation at S211 (b, **white**

columns). DEX increases S211 phosphorylation after 1, 6 and 12 hours (**b, striped columns**). DEX+SERT co-treatment induces hyperphosphorylation at S211, which exceeds the phosphorylation induced by DEX alone, and this effect is also abolished by H89 (**b, squared columns**). Western Blots for the GR-phosphoisoforms S203 and S211 are shown after 1 hour of treatment (**a,b**). SERT increased the expression of p27^{Kip1} (**c**) and p57^{Kip2} (**e**). The increased expression of p27^{Kip1} and p57^{Kip2} after 12 hours of sertraline treatment was abolished by RU486 (**d,f**). SERT increased GR transactivation after 12 hours of treatment (**g**), an effect which was abolished by H89 (**h**). S203 and S211 phosphorylation are normalized to the expression of the unphosphorylated, total GR protein. Gene expression of p27^{Kip1} and p57^{Kip2} is normalized to the housekeeping genes ACTB, GAPDH and B2M. All data are mean \pm s.e.m. *P<0.05, **P<0.01, and ***P<0.001 compared to the respective vehicle.

Figure 1

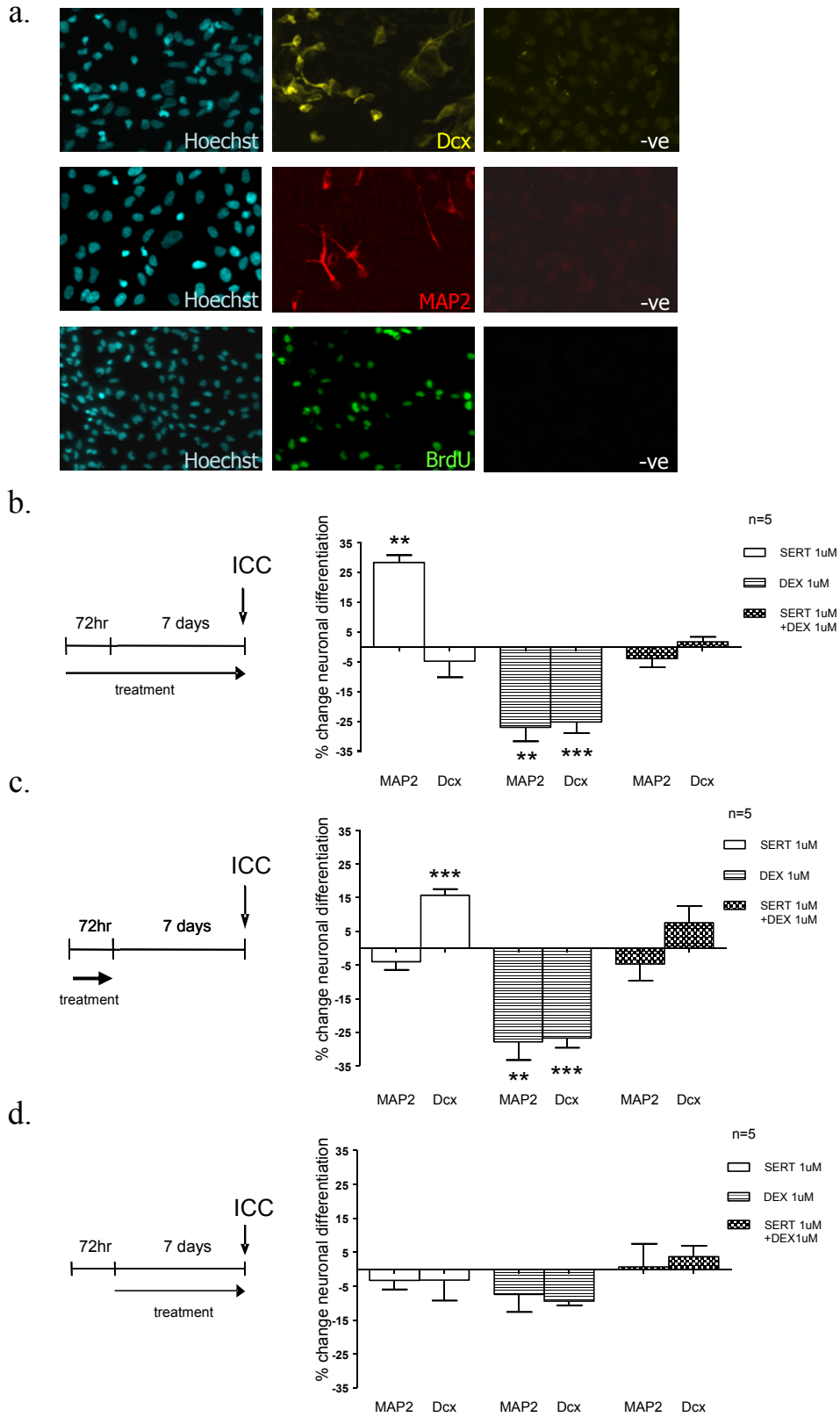


Figure 2

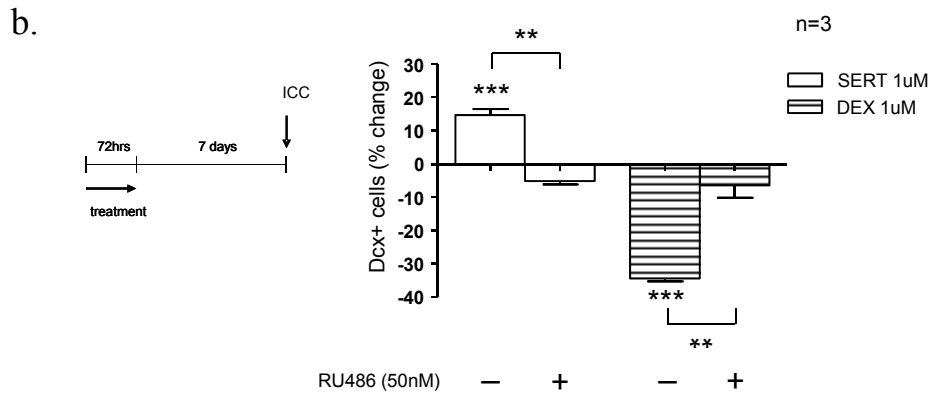
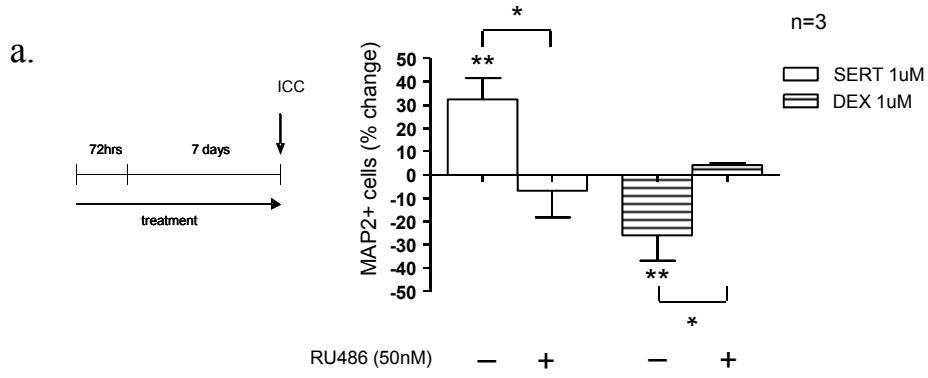
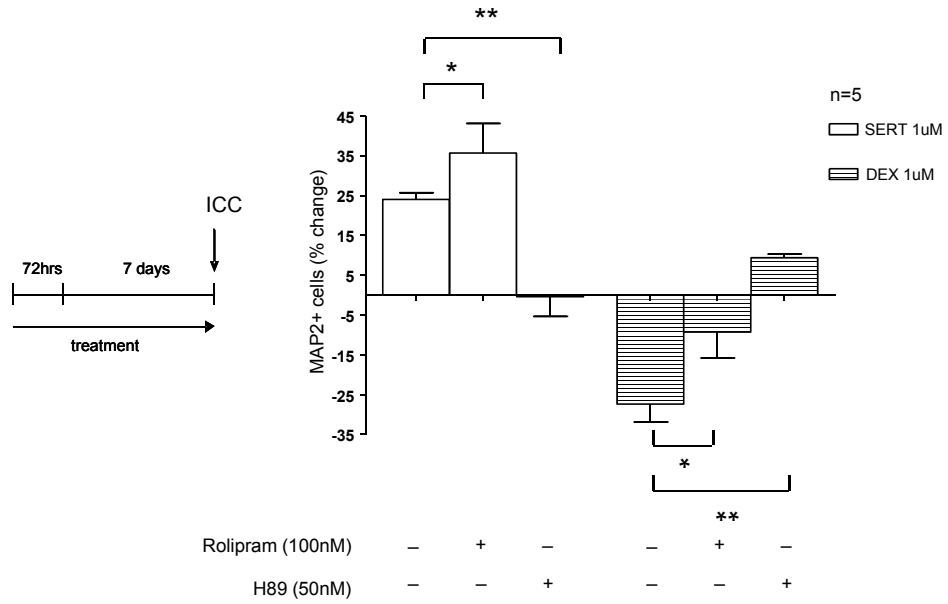


Figure 3

a.



b.

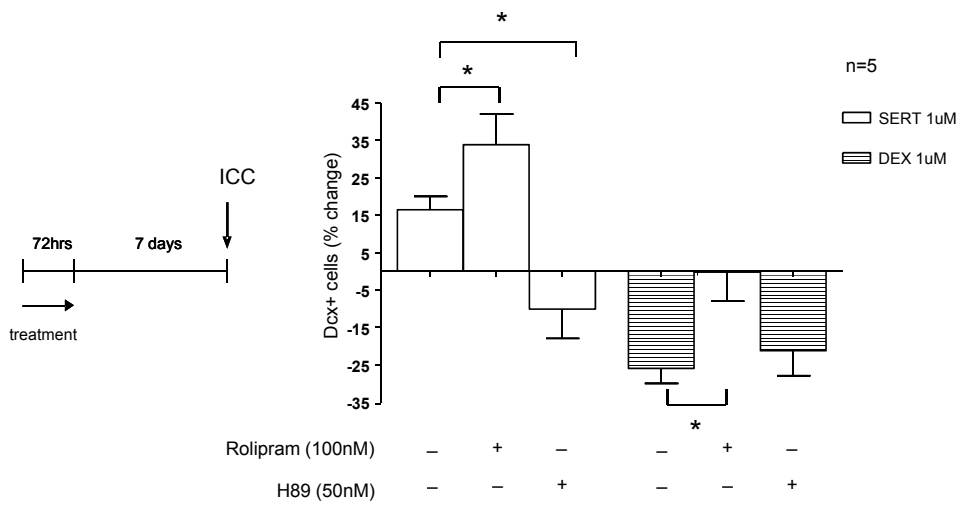


Figure 4

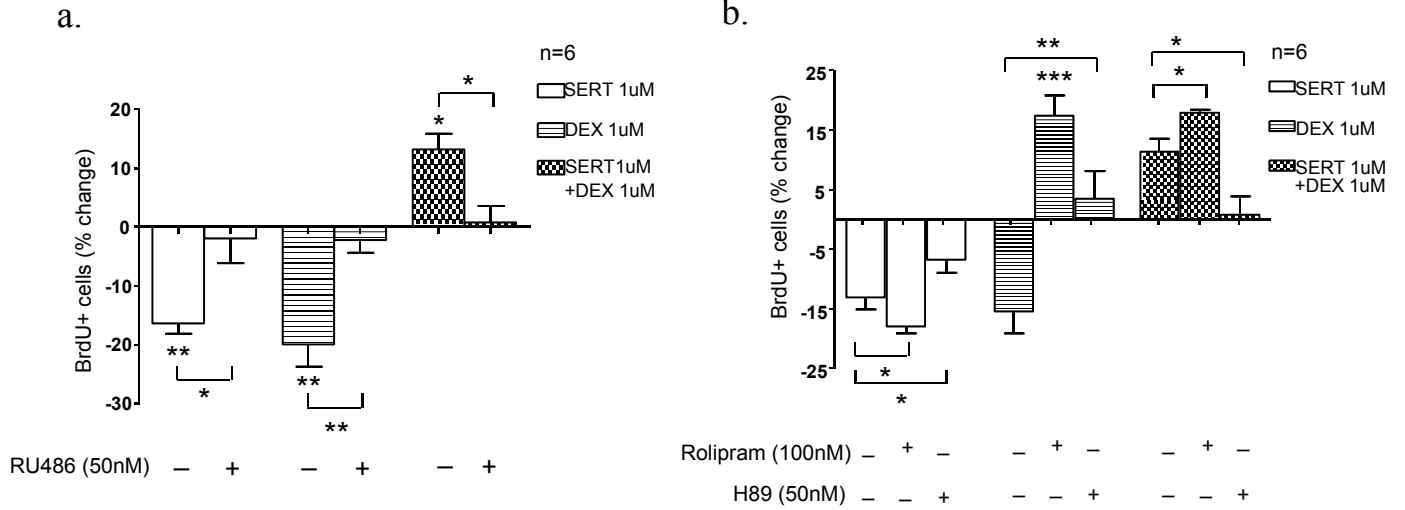


Figure 5.

