



HAL
open science

Ultra-high Resolution Spectroscopy with atomic or molecular Dark Resonances: Exact steady-state lineshapes and asymptotic profiles in the adiabatic pulsed regime

Thomas Zanon-Willette, Emeric de Clercq, Ennio Arimondo

► **To cite this version:**

Thomas Zanon-Willette, Emeric de Clercq, Ennio Arimondo. Ultra-high Resolution Spectroscopy with atomic or molecular Dark Resonances: Exact steady-state lineshapes and asymptotic profiles in the adiabatic pulsed regime. 2011. hal-00630748

HAL Id: hal-00630748

<https://hal.science/hal-00630748>

Preprint submitted on 11 Oct 2011

HAL is a multi-disciplinary open access archive for the deposit and dissemination of scientific research documents, whether they are published or not. The documents may come from teaching and research institutions in France or abroad, or from public or private research centers.

L'archive ouverte pluridisciplinaire **HAL**, est destinée au dépôt et à la diffusion de documents scientifiques de niveau recherche, publiés ou non, émanant des établissements d'enseignement et de recherche français ou étrangers, des laboratoires publics ou privés.

Ultra-high Resolution Spectroscopy with atomic or molecular Dark Resonances: Exact steady-state lineshapes and asymptotic profiles in the adiabatic pulsed regime

Thomas Zanon-Willette*

*Laboratoire de Physique Moléculaire pour l'Atmosphère et l'Astrophysique (LPMAA),
UPMC, CNRS UMR 7092, 4 place Jussieu, case 76, 75005 Paris, France*

Emeric de Clercq

*LNE-SYRTE, Observatoire de Paris, CNRS, UPMC,
61 avenue de l'Observatoire, 75014 Paris, France*

Ennio Arimondo

Dipartimento di Fisica "E. Fermi", Università di Pisa, Lgo. B. Pontecorvo 3, 56122 Pisa, Italy

(Dated: October 10, 2011)

Exact and asymptotic lineshape expressions are derived from the semi-classical density matrix representation describing a set of closed three-level Λ atomic or molecular states including decoherences, relaxation rates and light-shifts. An accurate analysis of the exact steady-state Dark Resonance profile describing the Autler-Townes doublet, the Electromagnetically Induced Transparency or Coherent Population Trapping resonance and the Fano-Feshbach lineshape, leads to the linewidth expression of the two-photon Raman transition and frequency-shifts associated to the clock transition. From an adiabatic analysis of the dynamical Optical Bloch Equations in the weak field limit, a pumping time required to efficiently trap a large number of atoms into a coherent superposition of long-lived states is established. For a highly asymmetrical configuration with different decay channels, a strong two-photon resonance based on a lower states population inversion is established when the driving continuous-wave laser fields are greatly unbalanced. When time separated resonant two-photon pulses are applied in the adiabatic pulsed regime for atomic or molecular clock engineering, where the first pulse is long enough to reach a coherent steady-state preparation and the second pulse is very short to avoid repumping into a new dark state, Dark Resonance fringes mixing continuous-wave lineshape properties and coherent Ramsey oscillations are created. Those fringes allow interrogation schemes bypassing the power broadening effect. Frequency-shifts affecting the central clock fringe computed from asymptotic profiles and related to Raman decoherence process, exhibit non-linear shapes with the three-level observable used for quantum measurement. We point out that different observables experience different shifts on the lower-state clock transition.

PACS numbers: 32.70.Jz, 32.80.Qk, 37.10.Jk, 06.20.Jr, 06.30.Ft, 03.65.Sq

I. INTRODUCTION

In the 1930s, molecular-beam magnetic resonance techniques achieved very high precision allowing the observation of atomic/molecular systems essentially in total isolation [1]. The Rabi method revealed coupling interactions between internal energy states and provided plenty of information not only on atomic and molecular structure, but also on nuclear properties. In the 1950s, N.F. Ramsey realized a scheme with much higher resolution by increasing the interaction time between the atom or molecule and the oscillating field [2]. Still today, this technique provides the highest resolution in order to follow a dynamical evolution of wave functions and probe its phase accumulations. Control and elimination of systematic frequency shifts dephasing a wave function oscillation at a natural Bohr frequency are fundamental tasks to achieve precision measurement [3].

An alternative tool to probe by the Rabi or Ramsey sequences, for a dipole-forbidden transition, is to radiatively mix the atomic or molecular states. As an example, without natural state mixing from spin-orbit interaction, a long-lived Raman coherence between a ground state and a long-lived (as in alkalis) or metastable (as in two-electron atoms) level, to be referred as clock states, can be established by a two-photon process via an upper excited level, thus forming a three-level Λ system. The properties of such a system are strongly determined by an optical pumping mechanism leading to a formation of a Dark Resonance associated with a trapping of the atomic population in a coherent superposition of states [4–10]. Since such quantum superposition states are radiatively stable, the associated Raman coherence production leads to extremely narrow Dark Resonances allowing high-resolution frequency measurements [11]. Such coherences were explored for single trapped ions [12, 13], microwave clocks [14], microwave chips [15, 16], optical lattice clocks [17], multi-photon excitations [18, 19], or nuclear clocks [20]. Similar coherent superpositions are used in solid-state physics for quantum information [21], in super-conducting circuits [22, 23],

*E-mail address: thomas.zanon@upmc.fr

in a single impurity ion inserted into a crystal [24], in quantum dots [25] with protection against random nuclear spin interactions [26], and in opto-mechanical systems [27, 28]. They are also actively considered within the future challenge of realising nuclear systems for quantum optics in the X-ray region [29, 30]. Dark Resonances, largely exploited in Quantum Optics, have been extended to the preparation of molecules in ro-vibrational ground states [31], and to coherent superposition of atomic-molecular states in order to measure atomic scattering lengths and lifetimes of exotic molecular states [32–35].

Three-level narrow resonances are associated to quantum interferences produced by amplitude scattering into different channels and are strongly dependent on the configuration intensities and detunings [36, 37]. Such different lineshapes were associated to quantum interferences as the Autler-Townes (AT) splitting of the resonance [38], the Fano-Feshbach (FF) canonical form [39], the Dark Resonance (DR) lineshape [8] known as Coherent Population Trapping (CPT) [6, 40] or Electromagnetically Induced Transparency (EIT) [41, 42].

Accurate calculation of the lineshape for a quantum superposition resonance requires numerical integration of the Bloch's equations. The literature reports on efforts to establish approximate analytic equations applicable to each particular case and, in a few cases, exact but rather complex [5, 10, 43–48]. The application of Λ schemes to high accuracy atomic clocks, in microwave or optical domains, requires to determine precisely the physical processes affecting the resonance lineshape and the shifts of the clock frequency. For that purpose this work provides a careful analysis of the lineshape dependence on different parameters characterizing the atomic or molecular system under investigation.

The standard clock interrogation of a three-level system involves continuous excitation of the two lower states while sweeping through the Raman resonance. For that regime, starting from the steady-state analytical solution of three-level Optical Bloch Equations we derive the exact expression of the resonance lineshape where the role of the relaxations and dephasing rates determining the absorption profile is expressed with physical meaning. Our detailed discussion of key lineshape parameters expands previous analysis [5, 6, 10, 13, 36, 37]. We show that Autler-Townes, CPT, EIT and FF lineshapes are associated to a universal two-photon resonance lineshape depending on system parameters [49]. The analytical expressions for the frequency shift associated either to the FF extrema or to the EIT resonance point out dependencies not obvious in a perturbation treatment.

An alternative clock operation scheme is based on a Raman-Ramsey scheme with the application of time separated but resonant two-photon pulses, experimentally introduced in the microwave domain [50, 51] and extended to rubidium cold atoms [52]. This operation was inspired by the Ezekiel's group work at MIT on a thermal

beam of sodium atoms [53]. While in the standard Ramsey approach, a coherent superposition of clock states in the bare atomic/molecular basis is dynamically produced by a $\pi/2$ pulse depending on pulse duration and laser power, the coherent superposition, in the three-level two-photon approach, is created by an optical pumping process long enough to reach a steady-state. This scheme overcomes the power broadening mechanism of the continuous wave resonance allowing to obtain high contrasted signals in a saturation regime. This idea was extended in refs. [54–56] to the realization of EIT-Raman (and hyper-Raman) optical clocks with alkaline-earth-metal atoms. The time-separated and individually tailored laser pulses may be designed to create an atomic coherent superposition while eliminating off-resonant ac Stark contributions from external levels modifying the optical clock resonance [54]. For the regime of the first laser pulse long enough to produce an efficient coherent superposition, we present here a detailed analysis describing the dependence of the DR lineshape on the system parameters.

Within the quantum clock framework, the determination of lineshapes and resonance shifts in different experimental configurations remains an important issue, to be carefully investigated within the present work. An important result of the present analytical and numerical analysis for the resonance frequency-shift of a three-level quantum clock, is that different lineshapes versus the optical detunings are obtained depending on the experimentally detected population or coherence observable.

The Λ system and the Bloch's equations for an homogeneous medium are introduced in Sec. II, where an adiabatic analysis of the time dependent equations determines the approximated time scale required to produce an efficient atomic/molecular coherent superposition. Sec. III establishes an exact treatment of the excited state steady-state regime and derives the key informations on the Dark Resonance lineshape. In Sect. IV, we derive the steady-state profile of a two-photon resonance between clock states. In Sec. V, we focus our attention to the Raman coherence lineshape observed between clock states. Finally Sec. VI analyzes DR fringes produced with resonant two-photon pulses separated in time mixing steady-state properties and Ramsey oscillations. A detailed analysis of the fringe properties is derived in the adiabatic regime where the first pulse establishes a steady-state solution and the probe pulse duration vanishes. Instead only dynamical properties of these phase-shifts were demonstrated in refs [54, 55, 72, 73]. In the Appendix A, we rewrite lineshape population solutions in terms of generalized multi-photon transition rates enhancing one and two photon transition rates in the three-level system. We finally derive in Appendix B a first order analytical expression of the central fringe Raman frequency-shift associated to the pulsed Dark Resonance lineshape.

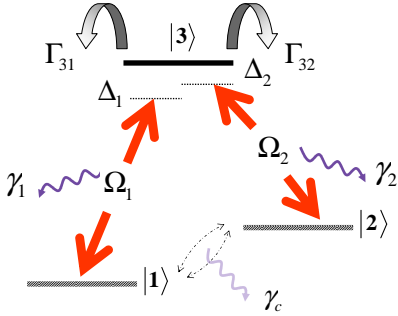


FIG. 1: Closed three-level Λ configuration in the density matrix representation including relaxation rates Γ_{31}, Γ_{32} , and decoherences $\gamma_1, \gamma_2, \gamma_c$. Optical detunings are Δ_1, Δ_2 . The parameter $\delta_r = \Delta_1 - \Delta_2$ defines the Raman resonance condition. Ω_1 and Ω_2 define the couplings with the applied laser fields. $|1\rangle$ and $|2\rangle$ are the clock states while $|3\rangle$ is the excited state.

II. THREE-LEVEL OPTICAL BLOCH EQUATIONS

The Doppler-free three-level system presented in Fig. 1 is described by the density matrix ρ_{ij} ($i, j = 1, 2, 3$) obeying the Liouville equation

$$\frac{d}{dt}\rho_{ij} = \frac{1}{i\hbar} \sum_k (H_{i,k}\rho_{k,j} - \rho_{i,k}H_{k,j}) + \mathcal{R}\rho_{ij}. \quad (1)$$

The coupling of the three atomic or molecular states to two coherent radiation fields, see Fig. 1, is described within the rotating wave approximation (RWA) by the following Hamiltonian:

$$H = \hbar \begin{pmatrix} \Delta_1 & 0 & \Omega_1 \\ 0 & \Delta_2 & \Omega_2 \\ \Omega_1 & \Omega_2 & 0 \end{pmatrix}, \quad (2)$$

where Δ_1, Δ_2 are the detunings of the two fields. Depending on the transition the Rabi frequencies Ω_1 and Ω_2 driving the system are determined by the product either between electric dipole and electric field amplitude or between magnetic dipole and magnetic field amplitude. It is worth noticing that Rabi frequencies defined here are half of the definition of ref. [57]. The matrix $\mathcal{R}\rho_{ij}$ taking into account relaxation and decoherence phenomena, is written

$$\mathcal{R}\rho_{ij} = \begin{pmatrix} \Gamma_{31}\rho_{33} & -\gamma_c\rho_{12} & -\gamma_1\rho_{13} \\ -\gamma_c\rho_{21} & \Gamma_{32}\rho_{33} & -\gamma_2\rho_{23} \\ -\gamma_1\rho_{31} & -\gamma_2\rho_{32} & -\Gamma\rho_{33} \end{pmatrix}. \quad (3)$$

The total spontaneous emission rate Γ is composed by the Γ_{31}, Γ_{32} rates (with $\Gamma = \Gamma_{31} + \Gamma_{32}$) describing either alkaline ($\Gamma_{31} \approx \Gamma_{32}$) or alkaline-earth ($\Gamma_{31} \neq \Gamma_{32}$) three-level

decay configuration. Optical coherences are relaxed with terms γ_1, γ_2 where $\gamma_1 + \gamma_2 = \gamma$. In a pure radiative process [57], optical decoherences are related to spontaneous emission rates by the relation $\gamma_1 = \gamma_2 = (\Gamma_{31} + \Gamma_{32})/2$. The ρ_{12} decoherence is described by the γ_c dephasing term. The optical Bloch equations describe the temporal evolution of the density matrix elements in the RWA as [49]:

$$\begin{cases} \frac{d\rho_{11}}{dt} = -2\Omega_1 \text{Im}\{\rho_{13}\} + \Gamma_{31}\rho_{33}, \\ \frac{d\rho_{22}}{dt} = -2\Omega_2 \text{Im}\{\rho_{23}\} + \Gamma_{32}\rho_{33}, \\ \frac{d\rho_{33}}{dt} = 2\Omega_1 \text{Im}\{\rho_{13}\} + 2\Omega_2 \text{Im}\{\rho_{23}\} - \Gamma\rho_{33}, \\ \frac{d\rho_{13}}{dt} = -[\gamma_1 + i\Delta_1]\rho_{13} + i\Omega_2\rho_{12} - i\Omega_1(\rho_{33} - \rho_{11}), \\ \frac{d\rho_{23}}{dt} = -[\gamma_2 + i\Delta_2]\rho_{23} + i\Omega_1\rho_{21} - i\Omega_2(\rho_{33} - \rho_{22}), \\ \frac{d\rho_{12}}{dt} = -[\gamma_c + i(\Delta_1 - \Delta_2)]\rho_{12} + i\Omega_2\rho_{13} - i\Omega_1\rho_{32}, \end{cases} \quad (4)$$

with $\rho_{ji} = \rho_{ij}^*$. The population conservation of the closed system is given by $\rho_{11} + \rho_{22} + \rho_{33} = 1$. The optical detunings will be related to the Raman detuning δ_r by $\Delta_1 = \Delta_0$ and $\Delta_2 = \Delta_0 - \delta_r$. Δ_0 represents the common optical detuning for a configuration where one laser is fixed while the other is frequency scanned. Notice that within the approach of deriving the Δ_1, Δ_2 laser modes from a single source by modulation at frequency δ_r , with $\Delta_1 = \Delta_0 \pm \delta_r/2$ and $\Delta_2 = \Delta_0 \mp \delta_r/2$, the light-shift derivation should be modified.

Eqs. (4) describe the transient dynamics and the steady state of populations and quantum coherences. A complete state mixing is reached when all atoms or molecules have been pumped efficiently into the dark state, a coherent superposition of the lower states. Thus, a pumping time is required to achieve an optimal atomic fraction trapped into the coherent state superposition. We derive such time scale evolution from Eq. (4) by an adiabatic elimination of the time derivative, $d\rho_{33}(t)/dt = d\rho_{13}(t)/dt = d\rho_{23}(t)/dt \equiv 0$ for pulse durations greater than $\Gamma_{31}^{-1}, \Gamma_{32}^{-1}$, as the population ρ_{33} and optical coherences ρ_{23} and ρ_{13} evolve more quickly than the populations ρ_{11}, ρ_{22} and the Raman coherence ρ_{12} .

We investigate the dynamics of the three-level Λ systems using various combination of long and short two-photon pulses separated in time. A straightforward temporal analysis of the resulting adiabatic set, similar to NMR equations [58, 59], exhibits two damping times: τ_{osc} , determining the phase memory of the Raman coherence precession (equivalent to a transversal or spin-spin relaxation rate), and τ_p which determines the typical population transfer into the dark state superposition (similar to a longitudinal or spin-lattice relaxation rate)

[60]. At low optical saturation $\Omega_1, \Omega_2 \ll \Gamma, \gamma$, we have

$$\begin{aligned} \tau_{osc}(\Delta_0) &\sim \left(\gamma_c + \frac{\Omega_1^2}{\tilde{\gamma}_2} + \frac{\Omega_2^2}{\tilde{\gamma}_1} \right)^{-1}, \\ \tau_p(\Delta_0) &\sim \left(\frac{\Omega_1^2}{\tilde{\gamma}_1} + \frac{\Omega_2^2}{\tilde{\gamma}_2} \right)^{-1} \left[1 + \tilde{\Upsilon} \frac{\Omega_2^2/\tilde{\gamma}_2 - \Omega_1^2/\tilde{\gamma}_1}{\Omega_2^2/\tilde{\gamma}_2 + \Omega_1^2/\tilde{\gamma}_1} \right]^{-1}, \end{aligned} \quad (5)$$

where we have introduced the following generalized relaxation rates:

$$\tilde{\gamma}_i = \frac{\Delta_i^2 + \gamma_i^2}{\gamma_i}, i = 1, 2. \quad (6)$$

The $\tilde{\Upsilon}$ generalized branching ratio difference is

$$\tilde{\Upsilon} = \frac{\frac{3}{\Gamma}(\Omega_1^2/\tilde{\gamma}_1 - \Omega_2^2/\tilde{\gamma}_2) + \Upsilon}{\frac{3}{\Gamma}(\Omega_1^2/\tilde{\gamma}_1 + \Omega_2^2/\tilde{\gamma}_2) + 1}, \quad (7)$$

with the Υ normalized branching ratio given by $\Upsilon = (\Gamma_{31} - \Gamma_{32})/(\Gamma_{31} + \Gamma_{32})$. The τ_{osc} and τ_p timescales play a key role on the population transfer between atomic or molecular states [54]. Indeed, optical coherences are efficiently generated only when the Ω_1 and Ω_2 Rabi frequencies are applied for a time τ exceeding $\Gamma_{31}^{-1}, \Gamma_{32}^{-1}$. A short pulse duration having $\Gamma_{31}^{-1}, \Gamma_{32}^{-1} < \tau < \tau_p$ will be Fourier limited and will lead to a weak contrast resonance profile, whereas a long pulse with $\tau \gg \tau_p \gg \Gamma_{31}^{-1}, \Gamma_{32}^{-1}$ will eliminate all time dependencies in lineshape and frequency shifts. This regime is latter examined within the following section.

III. THE STEADY-STATE LINESHAPE OF ρ_{33}

A. The Dark Resonance

In examining the steady-state situation with all time derivatives in Eq. (4) set to zero, we find the exact expression for the population of the upper state ρ_{33}

$$\rho_{33} = S^\Lambda \frac{(\Delta_1 - \Delta_2)^2 + \gamma_c \gamma_{eff}}{(\Delta_1 - \Delta_2)[\Delta_1 - \Delta_2 - \Delta_f] + \Gamma_{eff}^2}, \quad (8)$$

where $\Delta_1 - \Delta_2 = \delta_r$ is the Raman detuning. The expression of Δ_f , the frequency shift affecting the Raman detuning, and Γ_{eff} , halfwidth of the two-photon resonance, are reported in the following subsection. The coherence decay rate is $\gamma_{eff} = \gamma_c + \gamma^*$ with the γ^* saturation rate of the Raman coherence given by

$$\gamma^* = \frac{\Omega_1^2}{\gamma_2} + \frac{\Omega_2^2}{\gamma_1}, \quad (9)$$

Notice that γ_{eff} coincides with τ_{osc}^{-1} for the $\Delta_1 = \Delta_2 = 0$ resonant laser case.

S^Λ of Eq. (8) represents the signal amplitude. It contains the broad features of the ρ_{33} dependence on the optical detunings Δ_1, Δ_2 . The fraction on Eq.(8), whose

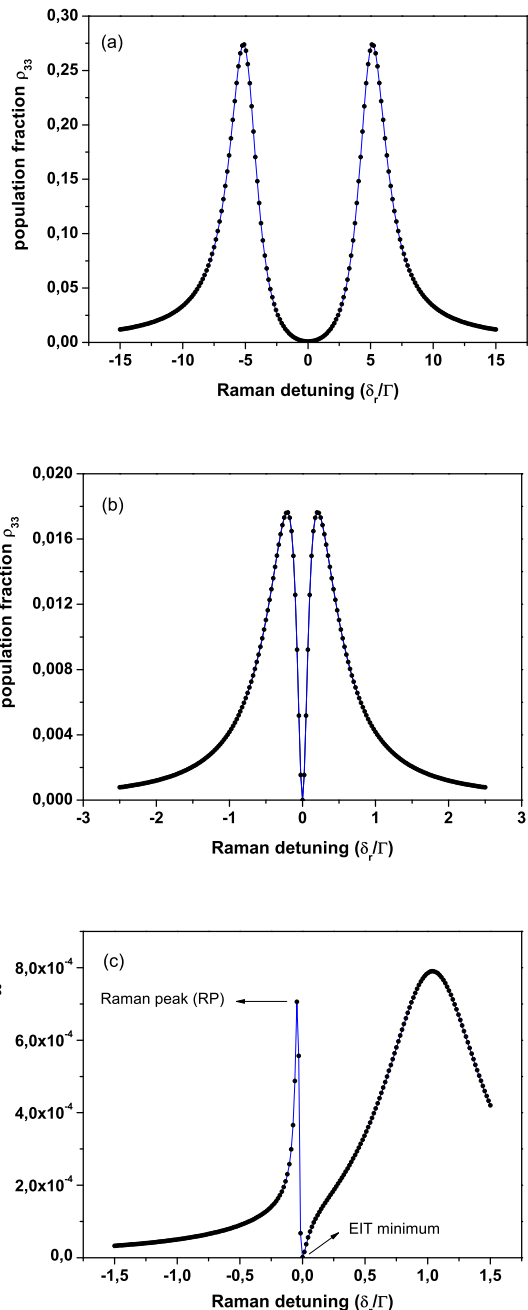


FIG. 2: Three-level spectra vs δ_r Raman detuning observed on the ρ_{33} population. For all spectra $\Gamma_{31} = \Gamma_{32} = \Gamma/2$, $\gamma_c = 0$. (a) AT spectrum at $\Delta_0 = 0$, $\Omega_1 = 5\Gamma$, and $\Omega_2 = \Gamma$. (b) Dark/EIT resonance at $\Delta_0 = 0$, $\Omega_1 = 0.2\Gamma$, and $\Omega_2 = 5 \times 10^{-2}\Gamma$. (c) FF resonance for $\Delta_0 = \Gamma$, $\Omega_1 = 0.2\Gamma$, $\Omega_2 = 10^{-2}\Gamma$. Solid lines from the analytic solution Eq. (8) and dots from the numerical integration of Eq. (4) at $\tau \gg \tau_p(0)$.

values lie in the $[0,1]$ interval, determines the ρ_{33} narrow variation with the Raman detuning $\Delta_1 - \Delta_2$. The

three-level signal amplitude S^A is given by

$$S^A = \frac{S}{1 + (3 - \frac{\Gamma}{\gamma})S + \frac{\bar{\Omega}_2^2 \Delta_1^2 + \bar{\Omega}_1^2 \Delta_2^2}{\gamma_1 \gamma_2}}, \quad (10)$$

where we introduced the normalized dimensionless Rabi frequencies [61]

$$\begin{aligned} \bar{\Omega}_1^2 &= \Omega_1^2 \frac{\Gamma_{32} \gamma_1}{\Omega_1^2 \Gamma_{32} \gamma_2 + \Omega_2^2 \Gamma_{31} \gamma_1}, \\ \bar{\Omega}_2^2 &= \Omega_2^2 \frac{\Gamma_{31} \gamma_2}{\Omega_1^2 \Gamma_{32} \gamma_2 + \Omega_2^2 \Gamma_{31} \gamma_1}. \end{aligned} \quad (11)$$

The saturation parameter S driving the population exchange between energy levels is determined from Einstein's rate equations as:

$$S = 2 \frac{\Omega_1^2 \Omega_2^2}{(\Gamma_{32} \gamma_2 \Omega_1^2 + \Gamma_{31} \gamma_1 \Omega_2^2)}. \quad (12)$$

The imaginary parts of optical coherences are related to the excited state lineshape expression by the relation:

$$Im\{\rho_{i3}\} = \frac{\Gamma_{i3}}{2\Omega_i} \rho_{33} \quad (i = 1, 2). \quad (13)$$

Therefore their lineshape is equivalent to that of ρ_{33} . In Appendix A, we recast all population lineshapes in terms of multi-photon transitions rates, pointing out the light-shift contributions to the optical detuning terms. We verified that the numerical results to be presented in the following can be derived also from that solution.

Depending on the detuning and intensity of the lasers or microwaves driving the three-level system, the lineshapes associated to Eqs. (8) and (13) present very different features, known as AT spectra, Dark/EIT resonance, and FF profile, associated to different degrees of interference between two-photon transition amplitudes.

The AT profile appears when one Rabi frequency is much larger than the natural linewidth of the excited state ($\Omega_i \gg \Gamma, i = 1, 2$), and in addition $\Omega_1 \ll \Omega_2$, or viceversa. Two splitted resonances, a doublet structure, appears in the frequency spectrum, as shown in Fig. 2(a).

At Rabi frequencies smaller than the excited state width, we reach the DR or EIT configuration where a narrow two-photon resonance is established from the quantum destructive interferences between the transition probability amplitudes [40, 42] as seen in Fig. 2(b). The system is placed in the dark state uncoupled from the driving fields. Note that at exact resonance, $\Delta_1 = \Delta_2 = 0$, $\rho_{33} = 0$ when $\gamma_c = 0$. These regimes are characterized ($\Delta_1 \approx \Delta_2 \lesssim \Gamma$), with $\Omega_1 \approx \Omega_2$ for the Dark Resonance, and $\Omega_i \gg \Omega_j; \Omega_i, \Omega_j < \Gamma$ for the EIT resonance.

The FF lineshape plotted in Fig. 2(c) is originated when one Rabi frequency is much larger than the second one, and in presence of an optical detuning from the excited state ($\Omega_i \gg \Omega_j, \Delta_1, \Delta_2 \geq \Gamma$). Two resonances appear in the FF spectrum, one broad corresponding to the saturated one-photon resonance. The second sharp

feature exhibits a characteristics asymmetric response, highly sensitive to changes in the system parameters and centered around the $\delta_r \approx 0$ Raman detuning. Its minimum is associated to the DR, or EIT dip, while the maximum is the Raman peak, or bright resonance, associated to the preparation of the coherent superposition of $|1\rangle$ and $|2\rangle$ states coupled to the driving electromagnetic fields. Both the EIT dip and the Raman peak are manifestations of the interference between the one-photon and two-photon amplitudes [36]. The asymmetry of the FF profile is reversed by changing the relative ratio between the Rabi frequencies.

B. Γ_{eff} Raman linewidth

The sub-natural EIT resonance of Fig. 2(b) experiences a linewidth which is power broadened by the optical saturation rate γ^* of Eq. (9). Let's note that such power broadening is important even for a laser intensity where the saturation is negligible on the optical transitions. In fact ref. [62] introduced a coherence saturation intensity, defined by $\gamma^* = \gamma_c$, smaller than the optical saturation intensity. The exact expression of the Γ_{eff} Raman linewidth is

$$\Gamma_{eff} = \sqrt{\frac{(\gamma_{eff} + 3\gamma_c S) \gamma_{eff}}{1 + (3 - \frac{\Gamma}{\gamma})S + \frac{\bar{\Omega}_2^2 \Delta_1^2 + \bar{\Omega}_1^2 \Delta_2^2}{\gamma_1 \gamma_2}}} \times \sqrt{1 + \zeta}, \quad (14)$$

where the factor ζ is

$$\begin{aligned} \zeta &= \frac{\Gamma \frac{\gamma_c S}{2\gamma_1 \gamma_2} [2\Delta_1 \Delta_2 + \Delta_1^2 - \Delta_2^2] + \gamma_c^2 \frac{\bar{\Omega}_2^2 \Delta_1^2 + \bar{\Omega}_1^2 \Delta_2^2}{\gamma_1 \gamma_2}}{(\gamma_{eff} + 3\gamma_c S) \gamma_{eff}} \\ &+ \frac{\frac{(\gamma_1 - \gamma_2) S}{2\gamma_1 \gamma_2} (\Gamma_{32} \gamma_2 - \Gamma_{31} \gamma_1)}{\gamma_{eff} + 3\gamma_c S}. \end{aligned} \quad (15)$$

ζ is very small ($\zeta \ll 1$) in a quasi-resonant laser interaction (according to the condition $\frac{\gamma_c}{\Gamma} \Delta_1^2, \frac{\gamma_c}{\Gamma} \Delta_2^2 \ll \Omega^2$) and a pure radiative process. As long as $\gamma_c, \Omega_1, \Omega_2 \ll \Gamma$, Γ_{eff} determines the half-linewidth of the sub-natural resonance. In that regime and for the pure radiative case, Γ_{eff} is well approximated by τ_{osc}^{-1} .

C. Δ_f Raman frequency-shift

The frequency shift Δ_f correcting the $\delta_r = 0$ Raman detuning condition is given by

$$\Delta_f = \Delta_{LS} + \Delta_{DS}, \quad (16)$$

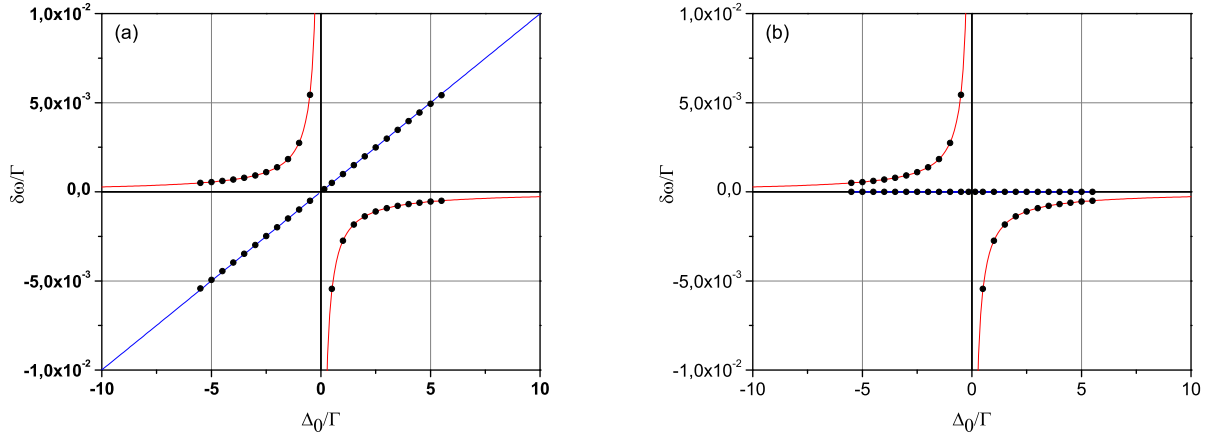


FIG. 3: Frequency shifts of the Dark/EIT dip and Raman peak observed on the ρ_{33} excited state population versus the optical detuning Δ_0 from Eq. (19) (solid blue and red lines, respectively), and from the numerical integration of Eq. (4) (solid dots \bullet). Parameters are $\Gamma_{31} = \Gamma_{32} = \Gamma/2$, $\Omega_1 = 5 \times 10^{-2}\Gamma$, and $\Omega_2 = 10^{-3}\Gamma$. In (a) $\gamma_c = 5 \times 10^{-4}\Gamma$; in (b) $\gamma_c = 0$ leads to a vanishing shift for the EIT resonance.

with the Δ_{LS} light-shift (LS) expression including the saturation effect given by

$$\Delta_{LS} = \frac{\frac{2}{\gamma_1\gamma_2} \left[\Omega_2^2 \overline{\Omega}_2^2 \Delta_1 - \Omega_1^2 \overline{\Omega}_1^2 \Delta_2 \right]}{1 + \left(3 - \frac{\Gamma}{\gamma}\right) S + \frac{\overline{\Omega}_2^2 \Delta_1^2 + \overline{\Omega}_1^2 \Delta_2^2}{\gamma_1\gamma_2}} - \frac{(\gamma_1 - \gamma_2)}{2\gamma_1\gamma_2\gamma} \frac{\Gamma S [\gamma_2 \Delta_1 + \gamma_1 \Delta_2]}{1 + \left(3 - \frac{\Gamma}{\gamma}\right) S + \frac{\overline{\Omega}_2^2 \Delta_1^2 + \overline{\Omega}_1^2 \Delta_2^2}{\gamma_1\gamma_2}}. \quad (17)$$

Notice that the second term of the above expression vanishes for the symmetric Λ scheme, i.e., with $\gamma_1 = \gamma_2$ (pure radiative process). In that case, the first term of Δ_{LS} could be associated to the light-shift expression, as pointed out in [5]. The Δ_{DS} decoherence shift (DS) depends on the γ_c rate as

$$\Delta_{DS} = \gamma_c \frac{S}{2\gamma_1\gamma_2} \frac{[\Gamma(\Delta_1 + \Delta_2) - (\Gamma_{31}\Delta_1 - \Gamma_{32}\Delta_2)]}{1 + \left(3 - \frac{\Gamma}{\gamma}\right) S + \frac{\overline{\Omega}_2^2 \Delta_1^2 + \overline{\Omega}_1^2 \Delta_2^2}{\gamma_1\gamma_2}}. \quad (18)$$

Let us emphasize that Δ_f is always null at $\Delta_1 = \Delta_2 = 0$ resonance [63].

D. Approximated frequency-shifts of EIT and FF resonances

Instead of the previous Section exact expression correcting the Raman detuning condition in the denominator, it is useful to derive the effective shift of the Dark/EIT resonance minimum, which is very relevant for precision spectroscopy or clock resonance. The calculation of the DR/EIT and FF frequency shifts requires to examine Eq. (8) with the Raman detuning δ_r as a free parameter. A valid approximation for the EIT and

Raman-peak shifts in various excitation configurations can be found when optical detuning $\Delta_1 \sim \Delta_2 \sim \Delta_0$ are tuned around the Raman condition $\Delta_1 - \Delta_2 = \delta_r$. A differentiation of Eq. (8) versus the δ_r parameter leads to roots of a quadratic equation defining the following extrema $\delta\omega_{33}(\Delta_0)$ of the EIT/FF lineshapes:

$$\delta\omega_{33}(\Delta_0) \approx \frac{\Gamma_{eff}^2 - \gamma_c\gamma_{eff}}{\Delta_f} \left(1 \mp \sqrt{1 + \frac{\gamma_c\gamma_{eff}\Delta_f^2}{(\Gamma_{eff}^2 - \gamma_c\gamma_{eff})^2}} \right). \quad (19)$$

The \mp solutions refer to the extrema of the FF lineshape. The minus (plus) sign holds for EIT dip (Raman Peak) when $\gamma_c\gamma_{eff}/\Gamma_{eff}^2 < 1$, and the opposite when $\gamma_c\gamma_{eff}/\Gamma_{eff}^2 > 1$. Fig. 3 shows the continuous-wave frequency shift versus the common optical detuning Δ_0 using Eq. (19). Results for both $\gamma_c = 5 \cdot 10^{-4}\Gamma$ and $\gamma_c = 0$ are presented. The EIT decoherence shift, proportional to γ_c exhibits a linear dependence on the optical detuning when radiative decay terms are symmetrical. As pointed in [10], when the decoherence term vanishes ($\gamma_c = 0$), there is no shift of the EIT minimum [64] except if we take into account external small off-resonant level contributions [65]. The Raman peak shift produced by light and decoherence varies with the inverse of the optical detuning as discussed by [37] and observed experimentally in [12]. For a quasi-resonant interaction we can further simplify the above expression for the Raman Peak and the EIT dip when $\gamma_c\gamma_{eff}/\Gamma_{eff}^2 \ll 1$ and $\Delta_f^2/\Gamma_{eff}^2 \ll 1$. Near the two-photon resonance, the shifts of Eq. (19) can

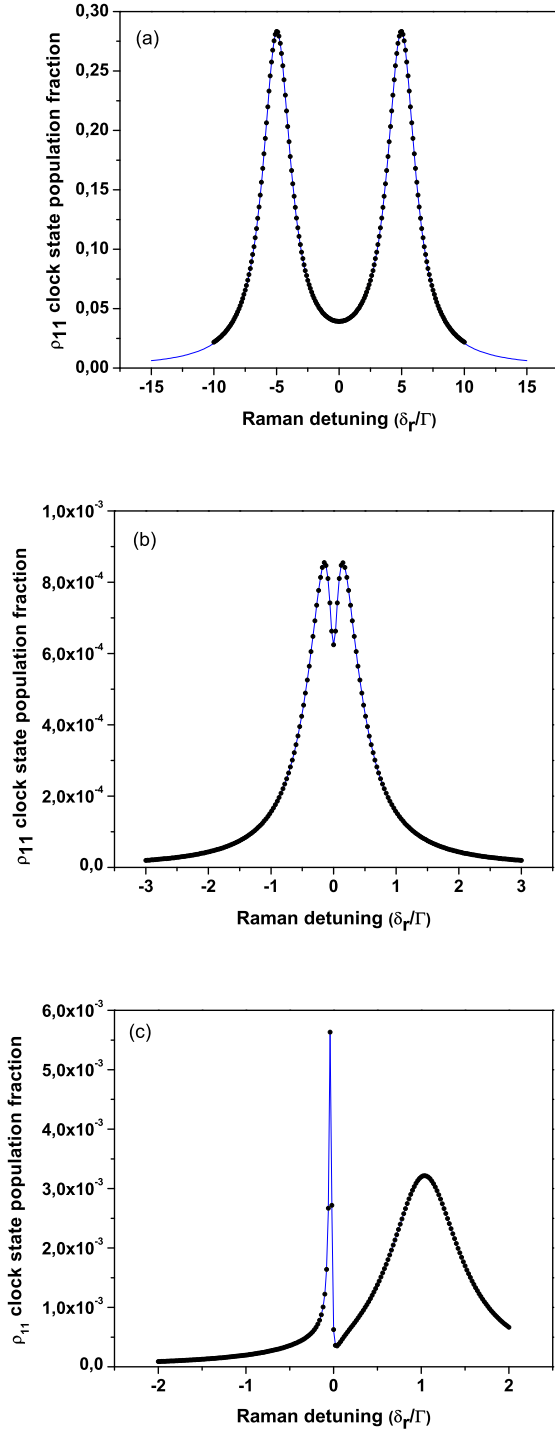


FIG. 4: Three-level spectra versus the δ_r Raman detuning observed on the ρ_{11} population using Eq. (21), solid blue line, and the numerical integration of Eq. (4), solid dots (\bullet). In (a) AT resonance, in (b) Lamb dip lineshape, and in (c) FF resonance. System parameters as in Fig. 2. In (a) and (b) Rabi frequencies as in Fig. 2. In (c) $\Omega_1 = 0.2\Gamma$, $\Omega_2 = 5 \times 10^{-3}\Gamma$, and $\Delta_0 = \Gamma$.

be accurately approximated as

$$\begin{aligned} \delta\omega_{33}^{EIT}(\Delta_0) &\approx -\gamma_c \Delta_f \frac{\gamma_{eff}}{2\Gamma_{eff}^2}, \\ \delta\omega_{33}^{RP}(\Delta_0) &\approx 2 \frac{\Gamma_{eff}^2}{\Delta_f}. \end{aligned} \quad (20)$$

The EIT dip frequency-shift is thus roughly given by the product of the γ_c decoherence rate and the Δ_f Raman frequency shift divided by the Γ_{eff} linewidth of the sub-natural resonance. Such a dependence was pointed out by [17] and by [46] based on a theoretical analysis of [66], and as mentioned in [48], was earlier derived in [67].

IV. STEADY-STATE LINESHAPES OF CLOCK STATE POPULATIONS ρ_{11}, ρ_{22}

A. The two-photon resonance

We focus now on clock-state resonances observed on the ρ_{11}, ρ_{22} populations and linked to the Raman coherence between those states. The clock state populations may be expressed in an exact form similar to that of Eq. (8) as

$$\begin{aligned} \rho_{11} &= S^{11} \frac{(\Delta_1 - \Delta_2)[\Delta_1 - \Delta_2 - \Delta_{11}] + \gamma_{11}^2}{(\Delta_1 - \Delta_2)[\Delta_1 - \Delta_2 - \Delta_f] + \Gamma_{eff}^2}, \\ \rho_{22} &= S^{22} \frac{(\Delta_1 - \Delta_2)[\Delta_1 - \Delta_2 + \Delta_{22}] + \gamma_{22}^2}{(\Delta_1 - \Delta_2)[\Delta_1 - \Delta_2 - \Delta_f] + \Gamma_{eff}^2}. \end{aligned} \quad (21)$$

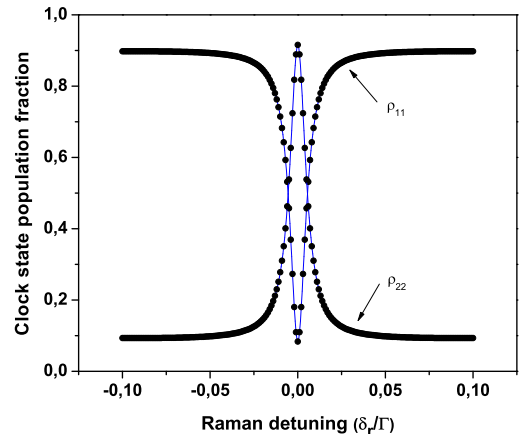


FIG. 5: Population inversion resonance between the $|1\rangle$ and $|2\rangle$ states, monitored on ρ_{11} and ρ_{22} , for unbalanced decay rates, $\Gamma_{32} = 10^{-5}\Gamma$, $\Gamma_{31} = \Gamma - \Gamma_{32}$. Solid dots (\bullet) are the result of the numerical integration of Eq. (4). Other parameters are $\Delta_0 = 0$, $\gamma_c = 0$, $\Omega_1 = 5 \times 10^{-2}\Gamma$ and $\Omega_2 = 5 \times 10^{-4}\Gamma$.

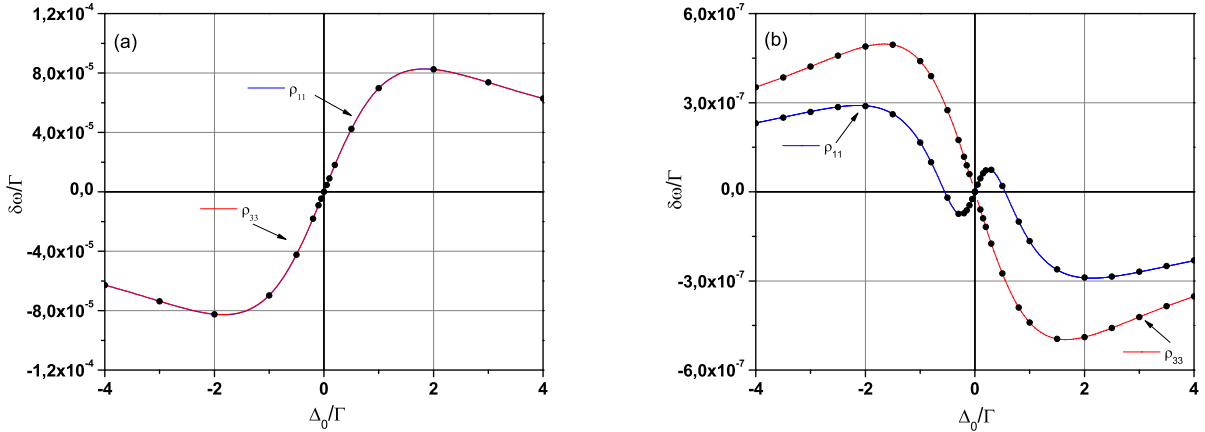


FIG. 6: Frequency shift of the population inversion resonance observed on ρ_{11} (or ρ_{22}) as derived from Eq. (25) (solid blue line) and frequency-shift of the ρ_{33} EIT resonance from Eq. (19) (solid red line) versus the optical detuning Δ_0 , for unbalanced decay rates. Solid dots (\bullet) are from the numerical integration of Eq. (4) with parameters $\Delta_0 = 0$, $\Omega_1 = 5 \times 10^{-2}\Gamma$, $\gamma_c = 5 \times 10^{-4}\Gamma$ and $\Omega_2 = 5 \times 10^{-4}\Gamma$. In (a) $\Gamma_{32} = 10^{-5}\Gamma$, $\Gamma_{31} = \Gamma - \Gamma_{32}$. Note that the $\delta\omega_{33}$ shift is indistinguishable from the $\delta\omega_{11}$ shift. In (b) $\Gamma_{32} = 10^{-10}\Gamma$, $\Gamma_{31} = \Gamma - \Gamma_{32}$.

where

$$S^{ii} = \left(1 + \frac{\tilde{\gamma}_i \Gamma_{3i}}{2\Omega_i^2}\right) S^\Lambda, \quad (i = 1, 2),$$

$$\Delta_{11} = \bar{\gamma}_{11} (\Delta_1 + \gamma_1 \bar{\Delta}),$$

$$\Delta_{22} = \bar{\gamma}_{22} (\Delta_2 - \gamma_2 \bar{\Delta}),$$

$$\bar{\Delta} = \frac{\Omega_2^2 \Gamma_{31} \gamma_2 \Delta_1 - \Omega_1^2 \Gamma_{32} \gamma_1 \Delta_2}{\gamma_1 \gamma_2 (\Omega_2^2 \Gamma_{31} + \Omega_1^2 \Gamma_{32})},$$
(22)

and

$$\gamma_{11}^2 = \gamma_c \gamma_{eff} + \bar{\gamma}_{11} (\gamma_1 \gamma_{eff} - \gamma_c \Delta_1 \bar{\Delta}),$$

$$\gamma_{22}^2 = \gamma_c \gamma_{eff} + \bar{\gamma}_{22} (\gamma_2 \gamma_{eff} + \gamma_c \Delta_2 \bar{\Delta}),$$
(23)

with

$$\bar{\gamma}_{11} = \frac{\Gamma_{31} \Omega_2^2 + \Gamma_{32} \Omega_1^2}{2\Omega_1^2 \gamma_1 + (\Delta_1^2 + \gamma_1^2) \Gamma_{31}},$$

$$\bar{\gamma}_{22} = \frac{\Gamma_{31} \Omega_2^2 + \Gamma_{32} \Omega_1^2}{2\Omega_2^2 \gamma_2 + (\Delta_2^2 + \gamma_2^2) \Gamma_{32}}.$$
(24)

Fig. 4 reports the population resonance under various saturation conditions, matching the AT, EIT and FF lineshapes of Fig. 2. Notice that the EIT regime of Fig. 4(b) corresponds to the case of Rabi frequencies smaller than the natural decay rate of the excited state. The "Lamb-dip" like lineshape for the resulting quasi saturated transition can conveniently be observed in the three-level configuration. This method of spectroscopy without Doppler broadening was proposed and experimentally accomplished by Javan and Schlossberg in [68, 69]. In such situation, the dip can be narrower than the homogeneous linewidth of the population resonance as in Fig. 4(b).

The clock state populations depend strongly on the normalized branching ratio difference Υ and on the Rabi frequencies driving atomic or molecular transitions. A numerical analysis of [70] demonstrated the occurrence of a strong population transfer for unequal Γ_{31}, Γ_{32} decay rates. Fig. 5 shows the steady-state complete population transfer for $\Omega_1 \gg \Omega_2$ and $\Upsilon \approx 1$ using the asymmetric decay rates associated to an alkaline-earth three-level system as strontium atoms [17, 54]. A large coherent population transfer $\rho_{22} - \rho_{11} = \pm 1$ is achieved when $\Omega_1 \gg \Omega_2$ for $\Upsilon \sim +1$ or $\Omega_2 \gg \Omega_1$ for $\Upsilon \sim -1$.

B. Approximated frequency-shift of the two-photon resonance

In an alkaline-earth frequency clock probing scheme, the large population transfer regime of Fig. 5 may be used to detect one lower state population, or the population difference between clock states. Thus, it is important to derive the two-photon shift also in this scheme. An analysis equivalent to the derivation of Eq. (19) when $\Delta_1 \sim \Delta_2 \sim \Delta_0$, we obtain, the frequency shift of ρ_{11} . For ρ_{22} , we make a similar derivation also using the population conservation condition. We obtain the following expression for $\delta\omega_{11}(\Delta_0)$ and similarly for $\delta\omega_{22}(\Delta_0)$

$$\delta\omega_{11}(\Delta_0) \sim \delta\omega_{22}(\Delta_0) \approx \frac{\gamma_{11}^2 - \Gamma_{eff}^2}{\Delta_{11} - \Delta_f} \left(1 \mp \sqrt{1 + \frac{(\Delta_f - \Delta_{11})(\gamma_{11}^2 \Delta_f - \Delta_{11} \Gamma_{eff}^2)}{(\Gamma_{eff}^2 - \gamma_{11}^2)^2}} \right).$$
(25)

For the specific radiative configuration of alkaline-earth species shown in Fig. 5, only the solution with the mi-

nus sign is needed but \mp solutions generally refer to the extrema of a dispersive lineshape. Our standard choice of the laser detunings $\Delta_1 = \Delta_0$ and $\Delta_2 = \Delta_0 - \delta_r$ introduces a very small difference in expressions of the frequency-shifts affecting each clock state population. For a quasi-resonant interaction when $\gamma_c \gamma_{eff} / \Gamma_{eff}^2 \ll 1$ with $\Delta_f / \Gamma_{eff} \ll 1$ and $\Delta_{11} / \Gamma_{eff} \ll 1$, the expression may be simplified to yield:

$$\delta\omega_{11}(\Delta_0) \sim \delta\omega_{22}(\Delta_0) \approx \frac{\Delta_{11} - \frac{\gamma_{11}^2}{\Gamma_{eff}^2} \Delta_f}{2(1 - \frac{\gamma_{11}^2}{\Gamma_{eff}^2})}. \quad (26)$$

The frequency shift versus the common mode optical detuning Δ_0 affecting the ρ_{11} (equivalently ρ_{22}) resonance is plotted in Fig. 6(a) and (b) for two particular ratios of the relaxation rates by spontaneous emission. In both cases, the shift of the two-photon resonance measured on the ρ_{11} or ρ_{22} observables has a dispersive lineshape versus the optical detuning Δ_0 . The slope is completely reversed owing to a nonlinear behavior when the ratio $\Upsilon \mapsto 1$ as in Fig. 6(b). A comparison with the frequency-shift of the excited state ρ_{33} is also included in the figure. Notice the difference in the ρ_{11}/ρ_{33} shifts for the case of a large asymmetry in the spontaneous decay rates.

V. STEADY-STATE LINESHAPE OF RAMAN COHERENCE ρ_{12}

A. The Raman coherence resonance

We are now focusing on the steady state Raman coherence resonance $\rho_{12} = Re\{\rho_{12}\} + i Im\{\rho_{12}\}$ given by

$$Re\{\rho_{12}\} = \Gamma_{12} S^\Lambda \frac{(\Delta_1 - \Delta_2) \bar{\Delta} - \gamma_{eff}}{(\Delta_1 - \Delta_2)[\Delta_1 - \Delta_2 - \Delta_f] + \Gamma_{eff}^2}, \quad (27)$$

$$Im\{\rho_{12}\} = \Gamma_{12} S^\Lambda \frac{(\Delta_1 - \Delta_2) + \bar{\Delta} \gamma_c}{(\Delta_1 - \Delta_2)[\Delta_1 - \Delta_2 - \Delta_f] + \Gamma_{eff}^2},$$

with

$$\Gamma_{12} = \frac{\Omega_2^2 \Gamma_{31} + \Omega_1^2 \Gamma_{32}}{2\Omega_1 \Omega_2}. \quad (28)$$

When the dipole transition is allowed, the Raman coherence resonance can be detected in several manners. If we deal with alkaline atoms such as Cs or Rb, the hyperfine Raman coherence might be detected as a microwave emission proportional to $|\rho_{12}|^2$, inserting the atomic medium into a micro-wave cavity [71]. Fig. 7 shows $|\rho_{12}|^2$ versus the Raman detuning condition δ_r when $\Gamma_{31} = \Gamma_{32} = \Gamma/2$ at different values of Δ_0 . The dispersive behavior of $Re\{\rho_{12}\}$ leads to a second resonant peak, appearing when $\Delta_0 > 3\Gamma$ as seen in Fig. 7(b) and Fig. 7(c).

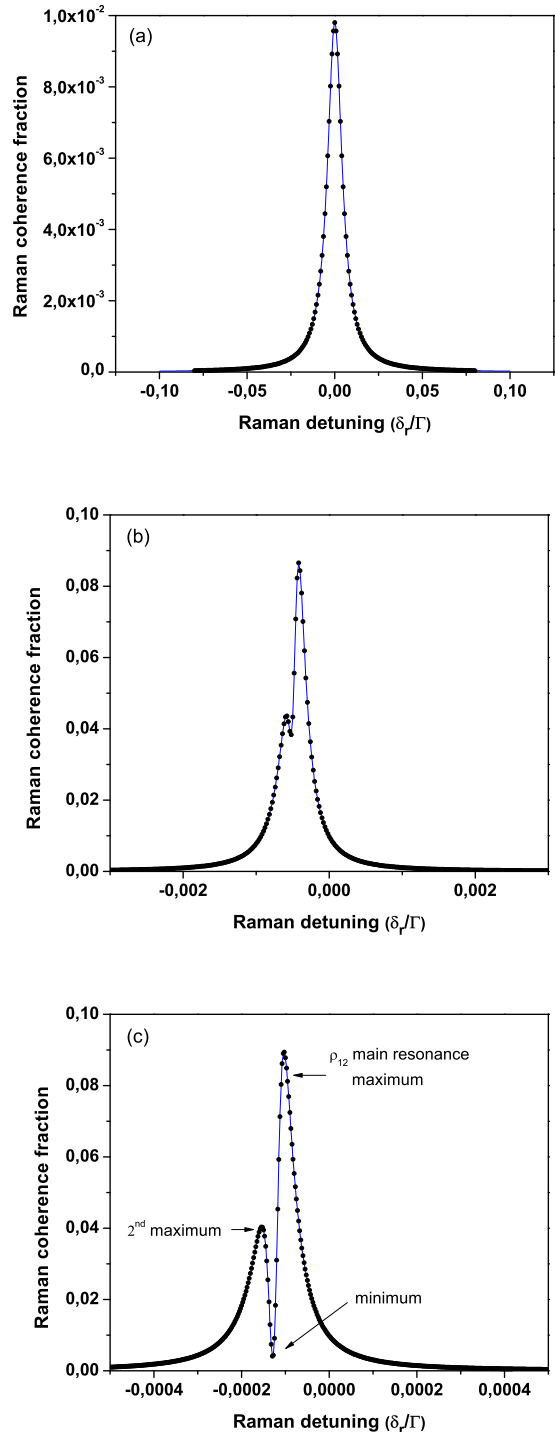


FIG. 7: (a) Steady-state lineshapes of the $|\rho_{12}|^2$ square modulus versus δ_r using Eq. (27) for $\Gamma_{31} = \Gamma_{32} = \Gamma/2$, $\Omega_1 = 5 \times 10^{-2}\Gamma$, $\Omega_2 = 5 \times 10^{-3}\Gamma$, and $\gamma_c = 0$. In (a) $\Delta_0 = 0$; in (b) $\Delta_0 = 5\Gamma$; in (c) $\Delta_0 = 20\Gamma$. Solid dots (\bullet) are from the numerical integration of Eq. (4).

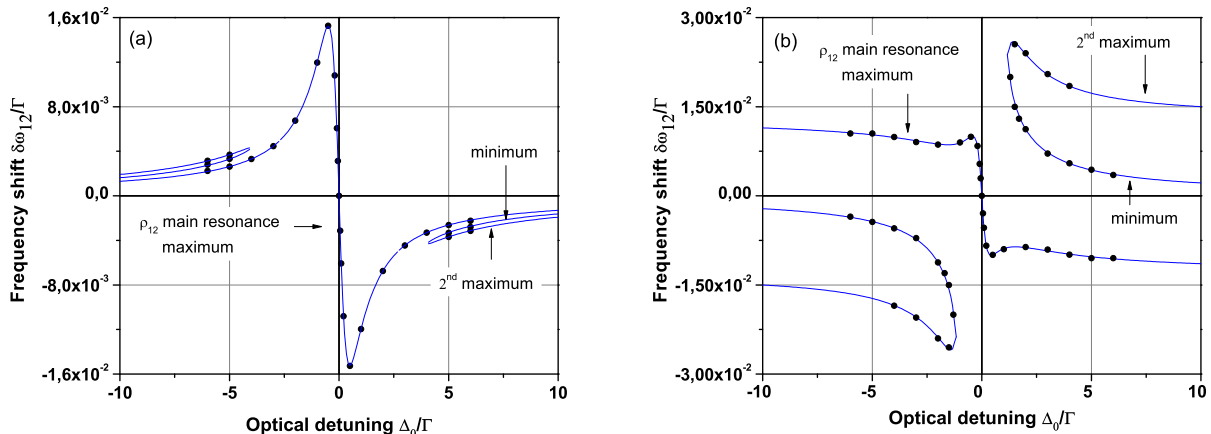


FIG. 8: (a) Frequency shift of the Raman coherence resonances observed on the $|\rho_{12}|^2$ as derived from Eq. (29) (solid blue line) versus the optical detuning Δ_0 . In (a) we have a symmetric radiative configuration with $\Gamma_{31} = \Gamma_{32} = \Gamma/2$ where $\Omega_1 = 5 \times 10^{-2}\Gamma$, $\Omega_2 = 5 \times 10^{-3}\Gamma$ and $\gamma_c = 0$. In (b) we have an asymmetric radiative configuration with $\Gamma_{31} = \Gamma - \Gamma_{32}$, $\Gamma_{32} = 10^{-5}\Gamma$ where $\Omega_1 = 5 \times 10^{-2}\Gamma$, $\Omega_2 = 5 \times 10^{-4}\Gamma$ and $\gamma_c = 5 \times 10^{-4}\Gamma$. Solid dots (\bullet) are from the numerical integration of Eq. (4).

B. Approximated frequency-shifts of the Raman coherence resonance

We derive here an accurate expression for the frequency-shifted resonance of $|\rho_{12}|^2$ when $\Delta_1 \sim \Delta_2 \sim \Delta_0$. A cubic equation is derived from the analytical differentiation of $|\rho_{12}|^2$ of Eq. (27) with respect to the Raman detuning δ_r . Using Cardan's solutions, the three roots are written as:

$$\delta\omega_{12}(\Delta_0) \sim -\frac{b}{3a} + \sqrt{-\frac{p}{3}} \text{Cos} \left[\frac{1}{3} \text{Cos}^{-1} \left[-\frac{3q}{p} \sqrt{-\frac{3}{p^3}} \right] + 2k \frac{\pi}{3} \right] \quad (29)$$

with $k = 0, 1, 2$, the p and q given by

$$p = \frac{3ac - b^2}{3a^2} \quad (30)$$

$$q = \frac{2b^3 - 9abc + 27a^2d}{27a^3}$$

and

$$a = -1 - \bar{\Delta}^2, \quad (31)$$

$$b = 3\bar{\Delta}(\gamma_{eff} - \gamma_c),$$

$$c = -2(\gamma_c^2 \bar{\Delta}^2 + \gamma_{eff}^2) + \Gamma_{eff}^2(1 + \bar{\Delta}^2) + \Delta_f \bar{\Delta}(\gamma_c + \gamma_{eff}),$$

$$d = \Gamma_{eff}^2 \bar{\Delta}(\gamma_c + \gamma_{eff}) + \Delta_f(\gamma_c^2 \bar{\Delta}^2 + \gamma_{eff}^2).$$

Eq. (29) allows us to obtain the frequency shift as a function of the common mode optical detuning Δ_0 plotted in Fig. 8. However an estimate of that shift is obtained looking only at the real part of the coherence solution which mainly describes the lineshape emission. From

the square modulus of the real part $|\text{Re}\{\rho_{12}\}|^2$, simple cubic solutions for the Raman coherence frequency-shift can be derived as:

$$\delta\omega_{12}(\Delta_0) \sim \frac{\gamma_{eff}}{\bar{\Delta}} \left(1 \mp \sqrt{1 + \frac{\bar{\Delta}\Gamma_{eff}}{\gamma_{eff}} \left(\frac{\bar{\Delta}\Gamma_{eff}}{\gamma_{eff}} - \frac{\Delta_f}{\Gamma_{eff}} \right)} \right), \quad (32)$$

or

$$\delta\omega_{12}(\Delta_0) \sim \frac{\gamma_{eff}}{\bar{\Delta}}. \quad (33)$$

When $\bar{\Delta}\Gamma_{eff}/\gamma_{eff} \ll 1$ and $\Delta_f/\Gamma_{eff} \ll 1$, the Raman coherence frequency-shift expression corresponding to the maximum emission becomes:

$$\delta\omega_{12}(\Delta_0) \sim \frac{\Delta_f}{2}. \quad (34)$$

For that case, we recover the usual dispersive shape related to the light-shift Δ_{LS} affecting clock states.

The frequency shift versus the common mode optical detuning Δ_0 derived from Eq. (29) is shown in Fig. 8. for the case of a symmetric radiative configuration with $\Gamma_{31} = \Gamma_{32}$ while in (b) for $\Gamma_{31} \gg \Gamma_{32}$. The central dispersive feature, related to the Raman shift expression Δ_f , corresponds to the maximum of the coherent emission. Other branches of the shift correspond to the extrema of the second resonance appearing for $\Delta_0 > 3\Gamma$ as from the lineshape simulation of Fig. 7(b). The results of Fig. 8 are in agreement with those derived in [71] for the microwave emission. A direct comparison of Fig. 7(b) with frequency shifts reported in Fig. 6 with similar conditions, yield to Raman coherence shifts larger by more than an order of magnitude than population frequency shifts.

VI. DARK RESONANCE FRINGES

A. Pulsed regime lineshape

The clock operation may be based on a pulsed Raman-Ramsey scheme, illustrated in Fig. 9, with beating oscillations observed whichever variable is monitored. This detection approach originally introduced in [53], was refined in [50, 51] and discussed in refs [54–56]. It allows to reach a higher precision in the clock frequency measurement, as typical of the Ramsey fringes. The present work focuses on the laser pulse scheme where the first pulse is long enough to allow the atomic or molecular preparation into the dark state superposition and the second delayed short pulse probing that superposition. Because the τ_p pumping time of Eq. (5) is required to reach the steady-state atomic or molecular preparation into the dark state, the length of the first pulse should satisfy $\tau \gg \tau_p(\Delta_0) \gg \Gamma_{31}^{-1}, \Gamma_{32}^{-1}$. From a mathematical point of view the $\tau \mapsto \infty$ steady state solution of the three-level optical Bloch equations may thus be used as initial condition for determining the evolution at later times. At time τ the laser fields are switched off in order to allow for a free evolution over the time T . Finally a readout operation is performed by applying a short pulse whose time duration τ_m is limited by $\Gamma_{31}^{-1}, \Gamma_{32}^{-1} < \tau_m \ll \tau_p(\Delta_0)$. In this adiabatic regime where $d\rho_{33}(t)/dt = d\rho_{13}(t)/dt = d\rho_{23}(t)/dt \equiv 0$, the short probe pulse operation is well described using the $\tau_m \mapsto 0$ limit. For a readout pulse as long as the preparation pulse, all atoms or molecules are repumped into a new dark state erasing interference fringes. Interferences fringes are detectable on all observables as a function of the T time delay, with very short readout pulses required for optical coherences and the excited state population fraction. Instead longer probing times are required for monitoring fringes on lower state populations due to slow time evolution of the clock states and the Raman coherence.

An analytical expression of the population fraction in the excited state can be established from Eq. (4) in the asymptotic limit of a long preparation pulse and a vanishing read out pulse, i.e. at the end of the free evolution time. In this regime, a pulsed DR expression $\rho_{33}(T)$ and related transmission parts of the $Im\{\rho_{13}\}(T), Im\{\rho_{23}\}(T)$ optical coherences can be rewritten in the exact $\alpha_{ij} [1 + \beta_{ij}|\rho_{12}|e^{-\gamma_c T} \cos(\delta_r T - \Phi_{ij})]$ form:

$$\rho_{33}(T) = \alpha_{33} \times (1 + \beta_{33}|\rho_{12}|e^{-\gamma_c T} \cos(\delta_r T - \Phi_{33})),$$

$$\alpha_{33} = \frac{\Omega_2^2(\Delta n + 1)/\Gamma\tilde{\gamma}_2 - \Omega_1^2(\Delta n - 1)/\Gamma\tilde{\gamma}_1}{1 + \frac{3}{\Gamma}(\Omega_1^2/\tilde{\gamma}_1 + \Omega_2^2/\tilde{\gamma}_2)}, \quad (35)$$

$$\beta_{33} = \frac{\sqrt{\mu_{\gamma 33}^2 + \mu_{\Delta 33}^2}}{\alpha_{33}}.$$

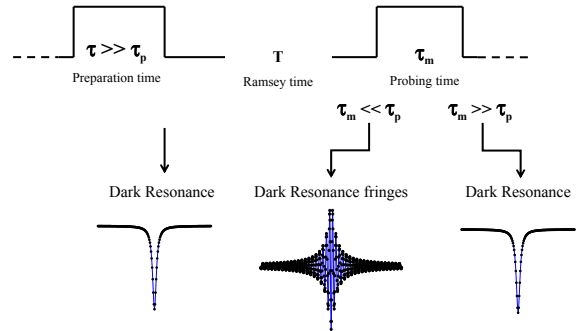


FIG. 9: Pulsed Dark Resonance detection scheme to perform high resolution spectroscopy of three-level Λ systems. T is the Ramsey time when both laser light fields Ω_1, Ω_2 are switched off. The first pulse is long enough $\tau \gg \tau_p(\Delta_0)$ to reach the stationary regime. During the second pulse, the probing time can be short $\tau_m \ll \tau_p(\Delta_0)$ to observe Dark Resonance fringes or long $\tau_m \gg \tau_p(\Delta_0)$ to recover a cw Dark Resonance as a new preparation stage for the next pulse.

$$Im\{\rho_{13}\}(T) = \alpha_{13} \times (1 + \beta_{13}|\rho_{12}|e^{-\gamma_c T} \cos(\delta_r T - \Phi_{13})),$$

$$\alpha_{13} = \frac{\Omega_1}{2\tilde{\gamma}_1} (3\alpha_{33} + (\Delta n - 1)), \quad (36)$$

$$\beta_{13} = \frac{\sqrt{\mu_{\gamma 13}^2 + \mu_{\Delta 13}^2}}{\alpha_{13}}.$$

$$Im\{\rho_{23}\}(T) = \alpha_{23} \times (1 + \beta_{23}|\rho_{12}|e^{-\gamma_c T} \cos(\delta_r T - \Phi_{23})),$$

$$\alpha_{23} = \frac{\Omega_2}{2\tilde{\gamma}_2} (3\alpha_{33} - (\Delta n + 1)), \quad (37)$$

$$\beta_{23} = \frac{\sqrt{\mu_{\gamma 23}^2 + \mu_{\Delta 23}^2}}{\alpha_{23}}.$$

where $\Delta n = \rho_{22} - \rho_{11}$ is the steady-state clock state population difference obtained from Eq. (21) and $|\rho_{12}|$ given by Eq. (27). The following quantities were introduced in the above expressions:

$$\mu_{\gamma 33} = \frac{2\Omega_1\Omega_2}{\Gamma} \left(\frac{(\tilde{\gamma}_1 + \tilde{\gamma}_2)/\tilde{\gamma}_1\tilde{\gamma}_2}{1 + \frac{3}{\Gamma}(\Omega_1^2/\tilde{\gamma}_1 + \Omega_2^2/\tilde{\gamma}_2)} \right), \quad (38)$$

$$\mu_{\Delta 33} = \frac{2\Omega_1\Omega_2}{\Gamma} \left(\frac{\Delta_1/\tilde{\gamma}_1\tilde{\gamma}_1 - \Delta_2/\tilde{\gamma}_2\tilde{\gamma}_2}{1 + \frac{3}{\Gamma}(\Omega_1^2/\tilde{\gamma}_1 + \Omega_2^2/\tilde{\gamma}_2)} \right),$$

$$\mu_{\gamma 13} = \frac{3}{2} \frac{\Omega_1}{\tilde{\gamma}_1} \mu_{\gamma 33} - \frac{\Omega_2}{\tilde{\gamma}_1}, \quad (39)$$

$$\mu_{\Delta 13} = \frac{3}{2} \frac{\Omega_1}{\tilde{\gamma}_1} \mu_{\Delta 33} - \Omega_2 \frac{\Delta_1}{\tilde{\gamma}_1\tilde{\gamma}_1},$$

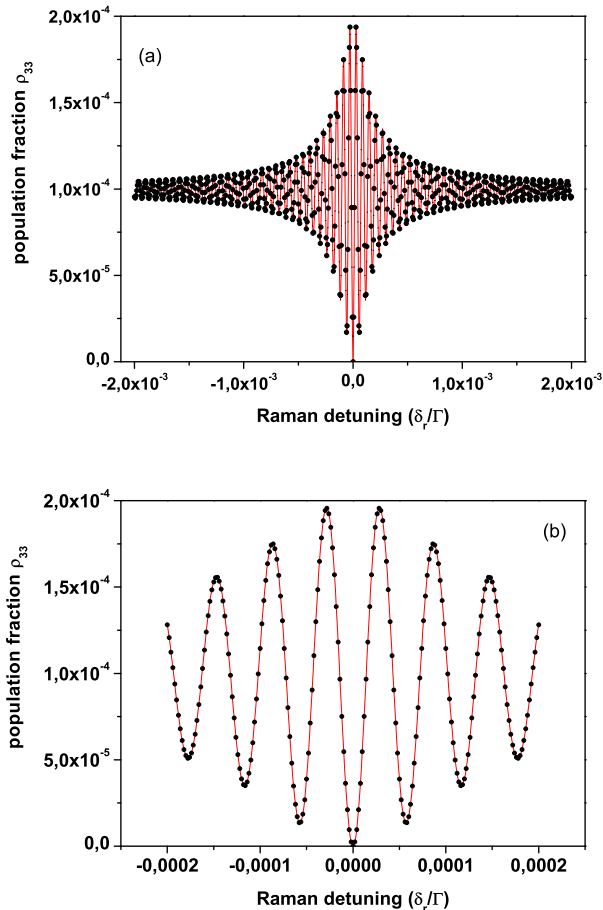


FIG. 10: (a) Dark Resonance fringes in the weak field limit. (b) Frequency span of the lineshape. Lines from Eq. (35) and dots (●) from Bloch's Eqs. (4). Common parameters: $\Gamma_{31} = \Gamma_{32} = \Gamma/2$, $\Delta_0 = 0$, $\gamma_c = 0$ and $T = 10\tau_p(0)$. In (a) and (b) Rabi frequencies $\Omega_1 = \Omega_2 = 0.005\Gamma$, free evolution time $T = 10\tau_p(0)$, probe time $\tau_m \sim 0.004\tau_p(0)$. Very good agreement between Eq. (4) and Eq. (35) results.

$$\begin{aligned}\mu_{\gamma 23} &= \frac{3}{2} \frac{\Omega_2}{\tilde{\gamma}_2} \mu_{\gamma 33} - \frac{\Omega_1}{\tilde{\gamma}_2}, \\ \mu_{\Delta 23} &= \frac{3}{2} \frac{\Omega_2}{\tilde{\gamma}_2} \mu_{\Delta 33} + \Omega_1 \frac{\Delta_2}{\gamma_2 \tilde{\gamma}_2}.\end{aligned}\quad (40)$$

In the non asymptotic limit where $\tau \sim \tau_m \sim \tau_p$, stationary solutions of $|\rho_{12}|$ and Δn have to be replaced by their transient expressions $|\rho_{12}(\tau, \tau_m)|$ and $\Delta n(\tau, \tau_m)$. When, $T \mapsto 0$, the lineshape expression from Eq. (35) is formally equivalent to Eq. (8).

A pulsed DR lineshape originated is plotted in Fig. 10(a) for small values of Rabi frequencies with a magnified span on the central fringe in Fig. 10(b). In these plots, the agreement between Eq. (35) (solid red line) and the Bloch's equations (dots ●) is very accurate. We have also studied the role of the Ramsey time T on the DR lineshape and amplitude. Fig. 11(a)-(c) shows the signal amplitude versus the Raman detuning for

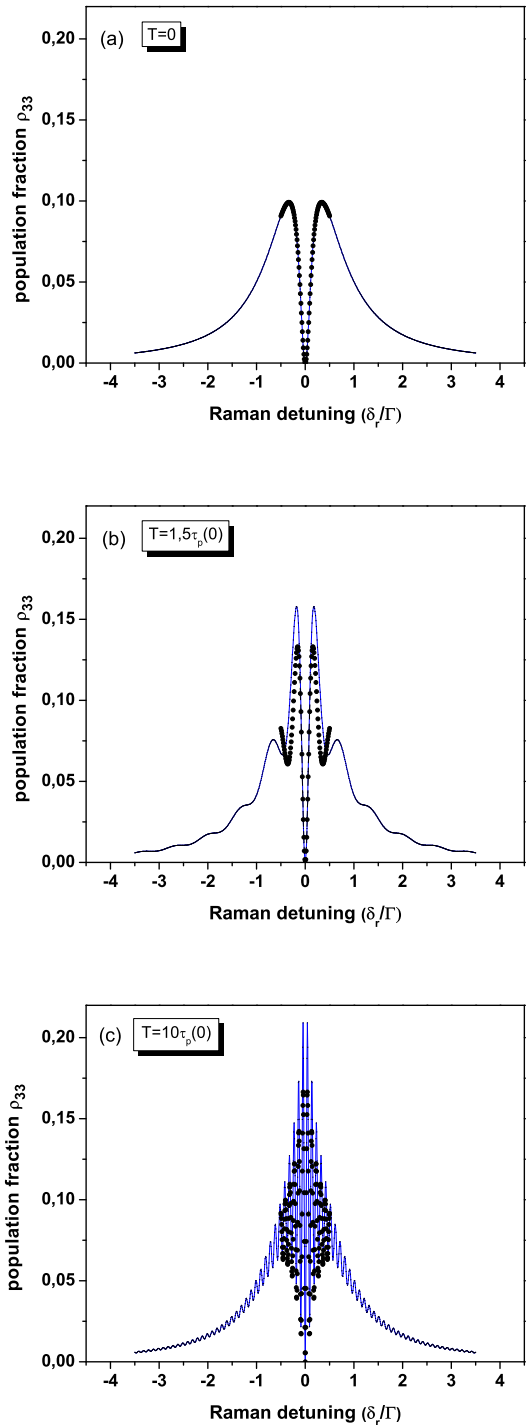


FIG. 11: DR lineshapes in strong laser fields computed from Eq. (35) versus Raman detuning for different Ramsey time T . Parameters $\Omega_1 = \Omega_2 = 0.2\Gamma$, $\Gamma_{31} = \Gamma_{32} = \Gamma/2$, $\Delta_0 = 0$ and $\gamma_c = 0$. Solid dots (●) from Bloch's Eqs. (4) with $\tau = 10\tau_p(0)$. In (b) and (c) $\tau_m 0.75\tau_p(0)$.

different values of T . The fringe amplitude is always twice the amplitude in the cw regime when $2T > \Gamma_{eff}^{-1}$

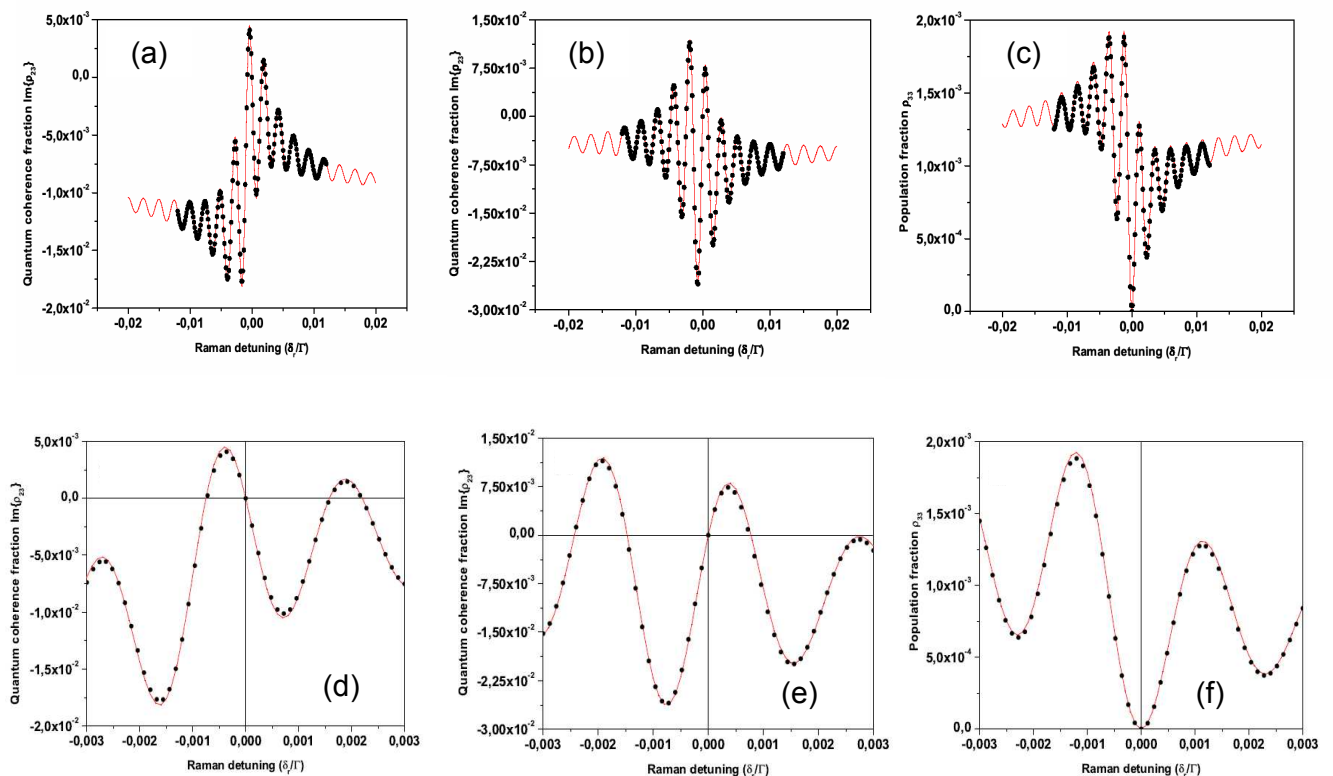


FIG. 12: Asymmetric fringes observed on the imaginary parts of optical coherences, $Im\{\rho_{13}\}(T)$ in (a) and $Im\{\rho_{23}\}(T)$ in (b), and on the excited population ρ_{33} , in (c), versus Raman frequency detuning. In (d), (e), and (f) expanded views of the central resonance fringe for each observable. Parameters $\Gamma_{31} = 0.8\Gamma$, $\Gamma_{32} = 0.2\Gamma$, $\Delta_0 = \Gamma$, $\gamma_c = 0$, $\Omega_1 = 5.10^{-2}\Gamma$, $\Omega_2 = 2.5 \times 10^{-2}\Gamma$, free evolution time $T = 10 \tau_p(0)$, $\tau > 10\tau_p(\Gamma)$, $\tau_m \sim 5.5 \times 10^{-3} \tau_p(\Gamma)$. Solid lines from the analytical forms of Eqs. (36), (37), and (35), respectively, in good agreement with the solid dots (\bullet) results from Bloch's Eqs. (4) .

and $\gamma_c = 0$. A careful comparison between Fig. 10 and Fig. 11(b) and Fig. 11(c) show that for Rabi frequencies comparable to the Γ_{31}, Γ_{32} relaxation rates, i.e., when saturation becomes important, the limit $\tau_m \mapsto 0$ used to obtain Eq. (35) is no longer valid and the effect of the readout duration pulse length τ_m has to be included into the analysis leading to a slight reduction of the fringe amplitude.

B. Stationary atomic/molecular Raman phase

The fringe signals appearing in the atomic observables are produced by the $\cos(\delta_r T - \Phi_{ij})$ terms appearing in the above expressions. Within a narrow region around the resonance, the lineshape is entirely described by a

phase given by

$$\begin{aligned} \Phi_{33} &= \text{Arctan} \left[\frac{\mu_{\gamma 33} \text{Im}\{\rho_{12}\} - \mu_{\Delta 33} \text{Re}\{\rho_{12}\}}{\mu_{\gamma 33} \text{Re}\{\rho_{12}\} + \mu_{\Delta 33} \text{Im}\{\rho_{12}\}} \right], \\ \Phi_{13} &= \text{Arctan} \left[\frac{\mu_{\gamma 13} \text{Im}\{\rho_{12}\} - \mu_{\Delta 13} \text{Re}\{\rho_{12}\}}{\mu_{\gamma 13} \text{Re}\{\rho_{12}\} + \mu_{\Delta 13} \text{Im}\{\rho_{12}\}} \right], \\ \Phi_{23} &= \text{Arctan} \left[\frac{\mu_{\gamma 23} \text{Im}\{\rho_{12}\} - \mu_{\Delta 23} \text{Re}\{\rho_{12}\}}{\mu_{\gamma 23} \text{Re}\{\rho_{12}\} + \mu_{\Delta 23} \text{Im}\{\rho_{12}\}} \right]. \end{aligned} \quad (41)$$

In the adiabatic regime, for a first pulse producing a steady state and a second pulse with a short duration, the $|\rho_{12}|$ steady state solution of Eq. (27) leads to cw expressions of Φ_{ij} ($i, j = 1, 2, 3$) where all time dependences are absent. For clock engineering, it is important to quantify the shift of the central fringe when the common mode optical detuning $\Delta_1 \sim \Delta_2 \sim \Delta_0$ is scanned around the $\delta_r = 0$ resonant value. Within the limit of a long first pulse and a short second pulse, in

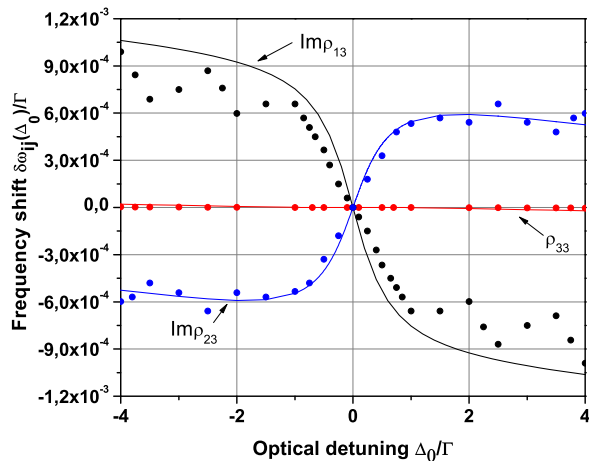


FIG. 13: Exact numerical tracking of fringe frequency-shifts $\delta\omega_{13}^{\text{fr}}$, $\delta\omega_{23}^{\text{fr}}$ and $\delta\omega_{33}^{\text{fr}}$ versus Δ_0 derived from Eqs. (35), (36) and (37). Parameters $\Gamma_{31} = 0.8\Gamma$, $\Gamma_{32} = 0.2\Gamma$, $\gamma_c = 5 \times 10^{-4}\Gamma$, $\Omega_1 = 5 \times 10^{-2}\Gamma$, $\Omega_2 = 3.7515 \times 10^{-2}\Gamma$, $T = 10 \tau_p(0)$. Solid dots (\bullet) from Bloch's equations (4) where we use $\tau > 10\tau_p(\Gamma)$, $\tau_m \sim 5.5 \times 10^{-3}\tau_p(\Gamma)$. Discrepancy between solid lines and dots are here due to the non vanishing τ_m readout time required with a numerical integration of Bloch's equations.

the weak field regime and for a sufficiently large Ramsey time ($T \gg \tau_p(\Delta_0), \tau_m$), the central fringe frequency-shift $\delta\omega_{ij}^{\text{fr}}$ should be connected to the Φ_{ij} phase accumulation. Time-dependent Raman frequency-shifts produced by short preparation pulses were examined in details in ref. [72, 73] using the Bloch vector model, but only for the excited state population. A complex wave-function formalism was also proposed for short pulses in [54] and extended in ref. [55] to derive analytical time-dependent expressions of any frequency-shift affecting the central fringe related to each possible observable.

Fig. 12(a)-(c) reports the fringes appearing on the imaginary parts $Im\{\rho_{13}\}(T)$, $Im\{\rho_{23}\}(T)$ and on the excited state population $\rho_{33}(T)$ for an asymmetrical radiative configuration with $\Gamma_{31} = 0.8\Gamma$ and $\Gamma_{32} = 0.2\Gamma$, a detuned laser excitation ($\Delta_0 = \Gamma$) with no Raman decoherence ($\gamma_c = 0$). Plots from Fig. 12(d)-(f) report a magnified span on the central fringe. The plots in Fig. 12(a),(b) for the optical coherences show asymmetrical lineshapes with the central fringe being blue or red shifted from the exact Raman resonance, a behaviour different from that observed in the cw regime. For the excited state fraction plotted in Fig. 12(c) under same conditions, the central fringe is not frequency shifted, as in the cw regime. These results point out, for the first time, that the imaginary parts of optical coherences, when individually probed, have a lineshape different from that observed on the excited state response due to asymmetric decay rates by spontaneous emission.

This different behaviour is also confirmed by the plots of Fig. 13 focusing on Dark Resonance fringe frequency-

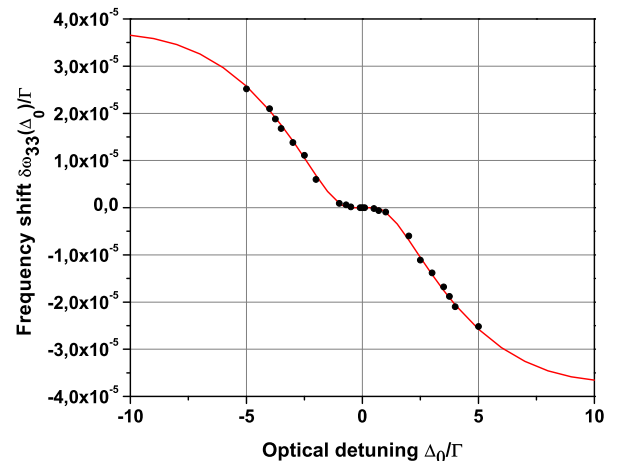


FIG. 14: Exact numerical tracking of the Dark Resonance fringe frequency-shift $\delta\omega_{33}^{\text{fr}}$ versus Δ_0 derived from Eqs. (35) following the approach of Appendix B. Solid dots (\bullet) are plotted from Bloch's Eqs. (4) with parameters as in Fig. 13.

shifts versus the common mode optical detuning Δ_0 when assuming a small decoherence term $\gamma_c = 5 \times 10^{-4}\Gamma$. Fig. 13 are numerical tracking of frequency-shifts from the Eq. (35) analytical form compared to the integration of Bloch's equations (4) (solid dots) for a particular ratio between Rabi frequencies. Oscillations around the numerical track of frequency shifts are observed for large optical detunings due to the non vanishing τ_m readout time used with Eqs. (4). Fig. 14 evidences a very weak slope near optical resonance; such dependence does not appear on the imaginary parts of the optical transmission. In absence of the γ_c decoherence the excited state dependence was recently discussed in works [74, 75] dealing with the time-dependant part of the Raman-Ramsey fringes reported earlier in [72, 73].

A perturbative expansion of Eq. (35) in the Raman detuning parameter is required to derive the correct non linear behavior of the frequency-shift versus the Δ_0 detuning, as reported in Eq. (B9) of Appendix B. Those dependencies (solid dots) are plotted in Fig. 15 for $\Omega_2/\Omega_1 \sim 0.75$ and compared to the numerical tracking shift of the fringe minimum from Eq. (35) (solid lines). A non linear behaviour with small oscillations around the optical resonance is correctly described. Increasing the T time, there is a small rotation of the frequency-shift around the $\Delta_0 = 0$ common mode detuning as shown in Fig. 15(b). This dependence appears only for a non vanishing γ_c decoherence rate. For a given value of T , at specific values of the optical detuning, an exact cancellation of the frequency-shift takes place as seen in Fig. 15(b).

VII. CONCLUSION

Three-level systems interacting with two coherent laser fields give rise to many phenomena, such as Autler-Townes doublet, Dark/EIT Resonance, and Fano-Feshbach transition. In all of them the Raman coherence, playing an essential role, is highly sensitive to the parameters of the laser interaction and of the decoherence processes. The present work explored how those parameters may be tuned for future optical clock devices providing sensitive measurements of energy levels shifts in neutral atoms clocks based on either fermionic or bosonic atomic species for example in dipolar traps [76] or in trapped ion clocks [77].

The three-level phenomena are well described by the

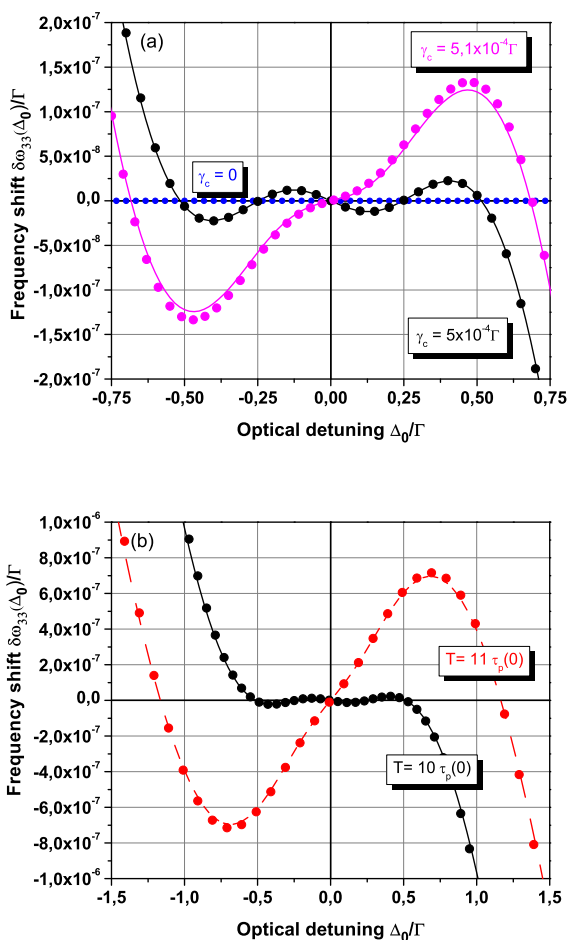


FIG. 15: (a) Expanded view of the fringe frequency-shift numerical tracking $\delta\omega_{33}^{\text{fr}}$ from Fig. 14 for various values of the small decoherence γ_c term. (b) Exact Numerical frequency-shift $\delta\omega_{33}^{\text{fr}}(\Delta_0)$ with different Ramsey time T for the particular ratio $\Omega_2/\Omega_1 \sim 0.75$ where $\Omega_1 = 5 \times 10^{-2} \Gamma$ and $\gamma_c = 5 \times 10^{-4} \Gamma$. Solid dots in (a) and (b) cases are plotted from the analytical first order expansion of the Raman shift using Eq. (B9). Note the oscillating pattern with small amplitude.

formalism of the Bloch's equations in a semi-classical density matrix representation. From the exact resolution of Bloch's equations we have derived general analytical expressions of the resonance lineshapes observed in the steady-state of different atomic observables. We have examined the linewidth and power broadening of the two-photon resonance. The precise dependence of the frequency shift associated to the Fano-Feshbach transition or to the EIT resonance, not appearing in a perturbation treatment, was discussed.

We have examined the resonance fluorescence and frequency-shift for a pulsed laser configuration in the adiabatic regime. The analytical but asymptotic solution allows us to write the lineshape solution of the narrow quantum resonance leading to formation of Dark Resonance fringes. The pulsed sequence overcomes the power broadening mechanism of the continuous-wave excitation while allowing high contrasted signals in a saturation regime. In the weak field limit, signals in pulsed regimes are two times the continuous-wave signals, except for the decrease due to the Raman coherence relaxation within the atomic free evolution. The lower limit to the resonance linewidth is $1/2T$ to be compared to the Γ_{eff} limit in the steady-state case. The resonance shift is still proportional to the γ_c decoherence as for the steady state regime, but it is now diluted over the Ramsey time.

An important and original result of our analysis is that different atomic or molecular quantum observables experience different non-linear lineshapes and therefore different shifts of the clock resonance. The choice of the observable is very important for the proper operation of a three-level atomic or molecular clock.

The present solution can be extended to the case of a train of laser pulses having different frequencies, optical detunings and phase steps as in refs [78, 79], in order to design more elaborated combinations of optical transient nutations and free evolutions and to explore more efficient detection scheme for very narrow transitions. For a treatment of the atom or molecule motion in matter wave interferometry [80], for instance based on a pulsed EIT/Raman interaction with a resonant excitation scheme and using stimulated photon recoils to create a beam splitter, the Bloch's set of Eq. (4) requires both the introduction of the recoil shift into the laser detunings and the recoil spread among different atomic momentum classes produced by spontaneous emission yielding to a full set of quantum coupled equations [81].

Acknowledgement

We would like to deeply thank Christof Janssen for a careful reading of the paper. T.Z.W is also extremely grateful to LPMAA for making possible the final completion of this work. T.Z.W would like to address his best acknowledgments to J. Ye from JILA-NIST supporting over a long time our ideas on three-level coherence for optical clocks.

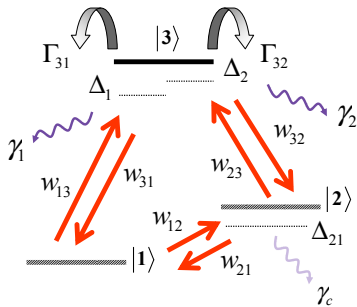


FIG. 16: Definition of the w_{ij} transition rates within the three-level Λ configuration

APPENDIX A: GENERALIZED MULTI-PHOTON STEADY-STATE RATE SOLUTIONS

The lineshape expressions of Eq. (8) and Eq. (21) may be recast in a different mathematical form using the generalized multi-photon rate solution of ref. [43], later employed in ref. [44] to establish conditions for the coherent population trapping in the steady-state regime. That analysis is based on three coupled equations for the $P_{ii}(Z)$, with $i = 1, 2, 3$, occupation probabilities of the three levels, equations written in the Laplace space of variable Z . This approach shown in Fig. (16) allows a reduction in the size of the linearly-coupled equation system to be solved. The three level populations are obtained as following:

$$\rho_{ii} = \lim_{t \rightarrow \infty} P_{ii}(t) = \lim_{Z \rightarrow 0} Z P_{ii}(Z). \quad (\text{A1})$$

From the steady-state solutions of refs. [43, 44] we obtain

$$\begin{aligned} \rho_{33} &= \frac{w_{12}w_{23} + w_{13}(w_{12} + w_{23})}{3w_{13}w_{12} + \Gamma_{32}W_{11} + \Gamma_{31}W_{22} + 3w_{23}W_{33}}, \\ \rho_{22} &= \frac{w_{12}w_{13} + \Gamma_{31}w_{12} + \Gamma_{32}(w_{13} + w_{12}) + w_{23}W_{33}}{3w_{13}w_{12} + \Gamma_{32}W_{11} + \Gamma_{31}W_{22} + 3w_{23}W_{33}}, \\ \rho_{11} &= \frac{w_{12}w_{13} + \Gamma_{32}w_{12} + \Gamma_{31}(w_{23} + w_{12}) + w_{23}W_{33}}{3w_{13}w_{12} + \Gamma_{32}W_{11} + \Gamma_{31}W_{22} + 3w_{23}W_{33}}. \end{aligned} \quad (\text{A2})$$

where the w_{ij} transition rates between each pair of states are defined in Fig. 16 and where

$$\begin{aligned} W_{11} &= w_{13} + 2w_{12}, \\ W_{22} &= w_{23} + 2w_{12}, \\ W_{33} &= w_{13} + w_{12}. \end{aligned} \quad (\text{A3})$$

The expressions for the two-photon ($w_{12} \propto \Omega_1^2 \Omega_2^2$) and one-photon ($w_{13} \propto \Omega_1^2, w_{23} \propto \Omega_2^2$) transitions rates are

$$\begin{aligned} w_{12} &= 2\text{Re}\left\{ \frac{\Omega_1^2 \Omega_2^2}{\xi_{31} \xi_{21} \xi_{32} + \Omega_1^2 \xi_{31} + \Omega_2^2 \xi_{32}} \right\}, \\ w_{13} &= 2\text{Re}\left\{ \frac{\Omega_1^2}{\xi_{31} + \frac{\Omega_2^2}{\xi_{21} + \frac{\Omega_1^2}{\xi_{32}}}} \right\} - w_{12}, \\ w_{23} &= 2\text{Re}\left\{ \frac{\Omega_2^2}{\xi_{32} + \frac{\Omega_1^2}{\xi_{21} + \frac{\Omega_2^2}{\xi_{31}}}} \right\} - w_{12}. \end{aligned} \quad (\text{A4})$$

The detuning parameters ξ_{ij} are complex numbers depending on the system parameters

$$\begin{aligned} \xi_{31} &= i\Delta_1 + \gamma_1, \\ \xi_{32} &= -i\Delta_2 + \gamma_2, \\ \xi_{21} &= i\Delta_{21} + \gamma_c = i(\Delta_1 - \Delta_2) + \gamma_c. \end{aligned} \quad (\text{A5})$$

The above expressions of the one and two-photon rates point out the light-shift contributions to the eigenfrequencies of the three-level Λ system.

APPENDIX B: DARK RESONANCE FRINGE FREQUENCY-SHIFT

1. First order expression of $\delta\omega_{33}^{fr}$

Eq. (35) can be recast in the following form:

$$\rho_{33}(T) = \alpha_{33} + B_{33} \cos(U), \quad (\text{B1})$$

where

$$\begin{aligned} B_{33} &= \mu |\rho_{12}| e^{-\gamma_c T}, \\ \mu &= \alpha_{33} \beta_{33}, \\ U &= \delta_r T - \Phi_{33}. \end{aligned} \quad (\text{B2})$$

To establish the frequency-shift, a track of the extremum of Eq. (35) produced by a differentiation versus δ_r leads to the following expression:

$$\rho'_{33} = \alpha'_{33} + \sqrt{B_{33}'^2 + B_{33}^2 U'^2} \sin(U + \theta_{33}), \quad (\text{B3})$$

with

$$\begin{cases} \theta_{33} = -\arctan\left(\frac{B_{33}'}{B_{33}U'}\right), & \text{if } T - \Phi'_{33} < 0, \\ \theta_{33} = -\arctan\left(\frac{B_{33}'}{B_{33}U'}\right) + \pi, & \text{if } T - \Phi'_{33} > 0. \end{cases} \quad (\text{B4})$$

The ρ'_{33} derivative vanishes at

$$U + \theta_{33} + \eta_{33} = 0, \quad (\text{B5})$$

where

$$\eta_{33} = \arcsin\left(\frac{\alpha'_{33}}{\sqrt{B_{33}'^2 + B_{33}^2 U'^2}}\right). \quad (\text{B6})$$

Rewriting the cancelation condition as:

$$\delta_r T - \Phi_{33} + \theta_{33} + \eta_{33} = 0, \quad (\text{B7})$$

we apply a first order expansion of Eq. (B7) into the δ_r Raman detuning leading to the following $\delta\omega_{33}^{fr}$ frequency shift:

$$\delta\omega_{33}^{fr} \equiv \delta_r = \frac{\Phi_{33}(0) - \theta_{33}(0) - \eta_{33}(0)}{T - \Phi'_{33}(0) + \theta'_{33}(0) + \eta'_{33}(0)}. \quad (\text{B8})$$

If we neglect $\theta_{33}(0)$ and $\eta_{33}(0)$ terms, the discrepancy is respectively +6% and -13%. If we neglect the $\theta'_{33}(0)$ or the $\eta'_{33}(0)$ term, the error is below +0.4%. Thus at the 1% level accuracy and at a common mode detuning small compared to spontaneous emission rates, we can rewrite the frequency-shift expression as

$$\delta\omega_{33}^{fr} \approx \frac{\Phi_{33}(0) - \theta_{33}(0) - \eta_{33}(0)}{T - \Phi'_{33}(0)}. \quad (\text{B9})$$

2. Derivative terms

This subsection reports the functions appearing in Eq. (B9) and required to determine the frequency-shift $\delta\omega_{33}^{fr}$ as a function of the common mode detuning Δ_0 and the system parameters. The additional functions may be obtained from the first order derivatives of the $\mu, \Phi_{33}, |\rho_{12}|, \alpha_{33}$ functions calculated at $\delta_r = 0$. In order to simplify the mathematics, those functions are here reported for the case of a pure radiative process $\gamma_1 = \gamma_2, \tilde{\gamma}_1 = \tilde{\gamma}_2$, and supposing $\Delta_1 = \Delta_2 = \Delta_0$.

$$\Phi_{33}(0) = -\text{Arctan} \left[\frac{\gamma_c \bar{\Delta}}{\gamma_{eff}} \right]. \quad (\text{B10})$$

$$\mu'(0) = \mu(0) \frac{\Delta_0 (\tilde{\gamma}_1 \Gamma + 3\Omega_1^2 - 3\Omega_2^2)}{\tilde{\gamma}_1 \gamma_1 (\tilde{\gamma}_1 \Gamma + 3\Omega_1^2 + 3\Omega_2^2)}. \quad (\text{B11})$$

$$\begin{aligned} \alpha'_{33}(0) &= \frac{4\Delta_0 \Omega_2^2 (\Gamma \tilde{\gamma}_1 + \Delta_n (\Gamma \tilde{\gamma}_1 + 6\Omega_1^2))}{\Gamma \tilde{\gamma}_1 (\Gamma \tilde{\gamma}_1 + 3(\Omega_1^2 + \Omega_2^2))^2} + \frac{\tilde{\gamma}_1 (\Omega_2^2 - \Omega_1^2)}{(\tilde{\gamma}_1^2 \Gamma + 3\tilde{\gamma}_1 (\Omega_1^2 + \Omega_2^2)) \Gamma_{eff}^2} \times \\ &\left[\Delta_{11} S^{11} + \Delta_{22} S^{22} - \gamma_c \bar{\Delta} \bar{\gamma}_{22} S^{22} + \gamma_c \Delta_0 \frac{2\bar{\Omega}_1^2}{\Gamma} (\bar{\gamma}_{11} S^{11} + \bar{\gamma}_{22} S^{22}) + \Delta_n \left(\Delta_f - \frac{8\Delta_0 \bar{\Omega}_1^2 (\Gamma_{eff}^2 - \gamma_c^2)}{4\Delta_0^2 + (1+2S)\Gamma^2} \right) \right. \\ &+ \frac{4\Delta_0 S \bar{\Omega}_1^2}{\left(1 + 2S + \frac{4\Delta_0^2}{\Gamma^2}\right)^2 \Gamma^2} \left(\gamma_{22}^2 \left(2 + \frac{\tilde{\gamma}_1 \Gamma_{32}}{\Omega_2^2}\right) - \gamma_{11}^2 \left(2 + \frac{\tilde{\gamma}_1 \Gamma_{31}}{\Omega_1^2}\right) \right) - \frac{2\Delta_0 \gamma_{22}^2 \Gamma_{32} S^\Lambda}{\Gamma \Omega_2^2} \\ &\left. + \frac{4\Delta_0 \bar{\gamma}_{22} S^{22} \Gamma_{32} (2\Delta_0 \bar{\Delta} \gamma_c + \Gamma \gamma_{eff})}{\Gamma_{32} (4\Delta_0^2 + \Gamma^2) + 4\Gamma \Omega_2^2} \right]. \end{aligned} \quad (\text{B12})$$

$$\Phi'_{33}(0) = -\frac{\bar{\Delta}^2 \gamma_c (2\gamma_1^2 \tilde{\gamma}_1 - 2\Delta_0^2 \gamma_c + \gamma_1 \tilde{\gamma}_1 \gamma_c) + \gamma_{eff} (2\gamma_1 \tilde{\gamma}_1 (\gamma_1 + \bar{\Omega}_1^2 \gamma_c) - 2\Delta_0^2 \gamma_{eff} + \gamma_1 \tilde{\gamma}_1 \gamma_{eff})}{2\gamma_1^2 \tilde{\gamma}_1 (\bar{\Delta}^2 \gamma_c^2 + \gamma_{eff}^2)}. \quad (\text{B13})$$

$$\begin{aligned} |\rho_{12}|'(0) &= |\rho_{12}|(0) \left(\frac{\Delta_f}{\Gamma_{eff}^2} - \frac{8\Delta_0 (4\Delta_0^2 \gamma_c S + \Gamma (\gamma_{eff}^2 + 3\gamma_c \gamma_{eff} S - \gamma_c^2 (1+2S))) \bar{\Omega}_1^2}{(1+2S + 4\Delta_0^2/\Gamma^2)^2 \Gamma^3 \Gamma_{eff}^2} \right. \\ &\left. + \frac{\bar{\Delta} (\gamma_c - \gamma_{eff} + 2\bar{\Omega}_1^2 \gamma_c^2/\Gamma)}{(\bar{\Delta}^2 \gamma_c^2 + \gamma_{eff}^2)} + \frac{8\Delta_0 \bar{\Omega}_1^2}{\Gamma^2 (1+2S + 4\Delta_0^2/\Gamma^2)} \right). \end{aligned} \quad (\text{B14})$$

These perturbative expressions were used to determine the $\delta\omega_{33}^{fr}$ frequency-shift plotted in Fig. 15 when $\Delta_0 \leq \Gamma$.

[1] J.B.M. Kellogg, S. Millman, Rev. Mod. Phys. **18**, 323 (1946).

[2] N.F. Ramsey, "Molecular Beams", Oxford University

- Press, (1956).
- [3] A.D. Cronin, J. Schmiedmayer, D.E. Pritchard, Rev. Mod. Phys. **81**, 1051 (2009).
- [4] T. Hansch, P. Toschek, Z. Physik **236**, 213 (1970).
- [5] R.G. Brewer, E.L. Hahn, Phys. Rev. A **11**, 1641 (1975).
- [6] R.M. Whitley, C.R. Stroud, Phys. Rev. A **14**, 1498 (1976).
- [7] E. Arimondo, G. Orriols, Lett. Nuovo Cimento **17**, 333 (1976).
- [8] G. Alzetta, A. Gozzini, L. Moi, G. Orriols, Nuovo Cimento B **36**, 5 (1976).
- [9] H.R. Gray, R.M. Whitley, C.R. Stroud Jr, Opt. Lett. **3**, 218 (1978).
- [10] G. Orriols, Il Nuovo Cimento, B **53**, 1 (1979).
- [11] V. Shah, J. Kitching, Advances in Atomic Molecular and Optical Physics, **59** 21 (2010).
- [12] I. Siemers, M. Schubert, R. Blatt, W. Neuhauser, P.E. Toschek, Euro. Phys. Lett. **18**, 139 (1992).
- [13] G. Janik, W. Nagourney, H. Dehmelt, J. Opt. Soc. Am. B **2**, 1251 (1985).
- [14] J. Vanier, Appl. Phys. B **81**, 421, (2005).
- [15] P. Treutlein, P. Hommelhoff, T. Steinmetz, T.W. Hansch, J. Reichel, Phys. Rev. Lett. **92**, 203005 (2004).
- [16] D.M. Farkas, A. Zozulya, D.Z. Anderson, Appl. Phys. B **101**, 701 (2010).
- [17] R. Santra, E. Arimondo, T. Ido, C. Greene, J. Ye, Phys. Rev. Lett. **94**, 173002 (2005).
- [18] T. Hong, C. Cramer, W. Nagourney, E. Forston, Phys. Rev. Lett. **94**, 050801 (2005).
- [19] C. Champenois, G. Hagel, M. Houssin, M. Knoop, C. Zumsteg, F. Vedel, Phys. Rev. Lett. **99**, 013001 (2007).
- [20] E. Peik, C. Tamm, EuroPhys. Lett. **61**, 181 (2002).
- [21] A. Greilich, R. Oulton, E. A. Zhukov, I.A. Yugova, D.R. Yakovlev, M. Bayer, A. Shabaev, A.L. Efros, I.A. Merkulov, V. Stavarache, D. Reuter, A. Wieck, Phys. Rev. Lett. **96**, 227401 (2006).
- [22] Z. Dutton, K.V.R.M. Murali, W.D. Oliver, T.P. Orlando, Phys. Rev. B **73**, 104516 (2006).
- [23] W.R. Kelly, Z. Dutton, J. Schlafer, B. Mookerji, T.A. Ohki, J.S. Kline, D.P. Pappas, Phys. Rev. Lett. **104**, 163601 (2010).
- [24] M. Santori, P. Tamarat, P. Neumann, J. Wrachtrup, D. Fattal, R.G. Beausoleil, J. Rabeau, P. Olivero, A.D. Greentree, S. Praver, F. Jelezko, P. Hemmer, Phys. Rev. Lett. **97**, 247401 (2006).
- [25] X. Xu, B. Sun, P.R. Berman, D.G. Steel, A.S. Bracker, D. Gammon, L.J. Sham, Nature, **4**, 692 (2008).
- [26] M. Issler, E.M. Kessler, G. Giedke, S. Yelin, I. Cirac, M.D. Lukin, A. Imamoglu, Phys. Rev. Lett. **105**, 267202 (2010).
- [27] S. Weis, R. Riviere, S. Delglise, E. Gavartin, O. Arcizet, A. Schliesser, T.J. Kippenberg, Science **330**, 1520 (2010).
- [28] A. H. Safavi-Naeini, T. P. Mayer Alegre, J. Chan, M. Eichenfield, M. Winger, Q. Lin, J. T. Hill, D. E. Chang, O. Painter, Nature **472**, 69 (2011).
- [29] R. Coussement, Y. Rostovtsev, J. Odeurs, G. Neyens, H. Muramatsu, S. Gheysen, R. Callens, K. Vyvey, G. Kozyreff, P. Mandel, R. Shakhmuratov, O. Kocharovskaya, Phys. Rev. Lett. **89**, 107601 (2002).
- [30] T.J. Bürvenich, J. Evers, C.H. Keitel, Phys. Rev. Lett. **96**, 142501 (2006).
- [31] M. J. Mark, J. G. Danzl, E. Haller, M. Gustavsson, N. Bouloufa, O. Dulieu, H. Salami, T. Bergeman, H. Ritsch, R. Hart, H.C. Nagerl, Appl. Phys. B. **95**, 219 (2009).
- [32] K. Winkler, G. Thalhammer, M. Theis, H. Ritsch, R. Grimm, J. Hecker Denschlag, Phys. Rev. Lett. **95**, 063202 (2005).
- [33] R. Dumke, J. D. Weinstein, M. Johanning, K. M. Jones, and P. D. Lett, Phys. Rev. A **72**, 041801R (2005).
- [34] S. Moal, M. Portier, J. Kim, J. Dugu, U.D. Rapol, M. Leduc, C. Cohen-Tannoudji, Phys. Rev. Lett. **96**, 023203 (2006).
- [35] S. Moal, M. Portier, N. Zahzam M. Leduc, Phys. Rev. A. **75**, 033415 (2007).
- [36] B. Lounis, C. Cohen-Tannoudji, J. Phys. II **2**, 579 (1992).
- [37] Y. Stalgies, I. Siemers, B. Appasamy, P.E. Toschek, J. Opt. Soc. Am. B **15**, 2505 (1998).
- [38] S.H. Autler, C.H. Townes, Phys. Rev. **100**, 703 (1955).
- [39] U. Fano, Phys. Rev. **124**, 1866 (1961); H. Feshbach, Rev. Mod. Phys. **36**, 1076 (1964).
- [40] E. Arimondo, Progress in Optics, **35**, 257 (1996).
- [41] S.E. Harris, J.E. Field, A. Imamoglu, Phys. Rev. Lett. **64**, 1107 (1990).
- [42] M. Fleischhauer, A. Imamoglu, J.P. Marangos, Rev. Mod. Phys. **72**, 633 (2005).
- [43] S. Swain, J. Phys. B: At. Mol. Phys. **13**, 2375 (1980).
- [44] S. Swain, J. Phys. B: At. Mol. Phys. **15**, 3405 (1982).
- [45] P.L. Kelley, P.J. Harshman, O. Blum, T.K. Gustafson, J. Opt. Soc. Am. B **11**, 2298 (1994).
- [46] R. Wynands and A. Nagel, Appl. Phys. B **68**, 1 (1999).
- [47] H. Lee, Y. Rostovtsev, C.J. Bednar, A. Javan, Appl. Phys. B **76**, 33 (2003).
- [48] M.J. MacDonnell, D.N. Stacey, M. Steane, Phys. Rev. A **70** 053802 (2004).
- [49] T. Zanon-Willette, Ph.D. thesis, LNE-SYRTE and UPMC, (2005), <http://tel.archives-ouvertes.fr/tel-00123499>.
- [50] T. Zanon, S. Guerandel, E. de Clercq, D. Holleville, N. Dimarcq, A. Clairon, Phys. Rev. Lett. **94**, 193002 (2005).
- [51] T. Zanon, S. Tremine, S. Guerandel, E. de Clercq, D. Holleville, N. Dimarcq, A. Clairon, IEEE. **54**, 776 (2005).
- [52] Xi Chen, G.-Q. Yang, J. Wang, M.-S. Zhan, Chin. Phys. Lett. **27**, 113201 (2010).
- [53] J.E. Thomas, P.R. Hemmer, S. Ezekiel, C.C. Leiby, Jr., R.H. Picard, C.R. Willis, Phys. Rev. Lett. **48**, 867545 (1982).
- [54] T. Zanon-Willette, A.D. Ludlow, S. Blatt, M.M. Boyd, E. Arimondo, J. Ye, Phys. Rev. Lett. **97**, 233001 (2006).
- [55] T.H. Yoon, Phys. Rev. A **76**, 013422 (2007).
- [56] V.I. Yudin, A.V. Taichenachev, C.W. Oates, Z. W. Barber, N.D. Lemke, A.D. Ludlow, U. Sterr, Ch. Lisda and F. Riehle, Phys. Rev. A **82**, 011804 (2010).
- [57] C. Cohen-Tannoudji, J. Dupont-Roc, G. Grynberg, *Atom-photon Interactions* (Wiley, New York, 1998).
- [58] E.T. Jaynes, Phys. Rev. **98**, 1099 (1955).
- [59] H.C. Torrey, Phys. Rev. **76**, 1059 (1949).
- [60] A. Abragam, "*Principles of Nuclear Magnetism*", Ed. Clarendon Press, Oxford. (1961); R.L. Schoemaker, in "*Laser coherence spectroscopy*", ed. J.I. Steinfeld, New York, Plenum Press, 197 (1978).
- [61] All quantities with an overbar are dimensionless.
- [62] O. Kocharovskaya and P. Mandel, Phys. Rev. A **42**, 523 (1990).
- [63] As mentioned in [37], in [5, 10] the Δ_{LS} Raman frequency-shift were erroneously associated to the shift of the Raman peak.
- [64] There is no internal shift of the EIT resonance when $\gamma_c = 0$ except if light-shift produced by additional levels

- external to the Λ system is introduced into the Raman detuning [17, 54].
- [65] E. De Clercq, P. Cerez, *Opt. Com.* **45**, 91 (1983).
 - [66] M. Fleischhauer, M.O. Scully, *Phys. Rev. A* **49**, 1973 (1994).
 - [67] A.G. Kofman, *Phys. Rev. A* **56**, 2280 (1997).
 - [68] H.R. Schlossberg, A. Javan, *Phys. Rev.* **150**, 267 (1966).
 - [69] H.R. Schlossberg, A. Javan, *Phys. Rev. Lett.* **17**, 1242 (1966).
 - [70] I.V. Jyotsna, G.S. Agarwal, *Phys. Rev. A* **52**, 3147 (1995).
 - [71] J. Vanier, A. Godone, and F. Levi, *Phys. Rev. A* **58**, 2345 (1998).
 - [72] P.R. Hemmer, M.S. Shahriar, V.D. Natoli, S. Ezekiel, *J. Opt. Soc. Am. B* **6**, 1519 (1989).
 - [73] M.S. Shahriar, P.R. Hemmer, D.P. Katz, A. Lee, M.G. Prentiss, *Phys. Rev. A* **55**, 2272 (1997).
 - [74] J. Zhang, J. Chen, Proceedings Frequency Control Symposium, 2007 Joint with the 21st European Frequency and Time Forum. (IEEE International), 49 (2007).
 - [75] W. Wenguo, P. Suping, *Chinese Journal of Electronics*, **19**, 229 (2010).
 - [76] A. Derevianko, H. Katori, *Rev. Mod. Phys.* **83**, 331 (2011).
 - [77] D. Leibfried, R. Blatt, C. Monroe, D. Wineland, *Rev. Mod. Phys.* **75**, 281 (2003).
 - [78] B.J. Dalton, T.D. Kieu, P.L. Knight, *Opt. Acta.* **33**, 459 (1986).
 - [79] L.M.K. Vandersypen, I.L. Chuang, *Rev. Mod. Phys.* **76**, 1037 (2005).
 - [80] C.J. Bordé, in *Atom Interferometry*, edited by P. Berman, Academic Press, 257 (1997).
 - [81] A. Aspect, E. Arimondo, R. Kaiser, N. Vansteenkiste, C. Cohen-Tannoudji, *J. Opt. Soc. Am. B* **6**, 2112 (1989).