



Preventive interventions in families with parental depression: children's psychosocial symptoms and prosocial behaviour

Tytti Solantaus, E. Juulia Paavonen, Sini Toikka, Raija-Leena Punamäki

► To cite this version:

Tytti Solantaus, E. Juulia Paavonen, Sini Toikka, Raija-Leena Punamäki. Preventive interventions in families with parental depression: children's psychosocial symptoms and prosocial behaviour. *European Child and Adolescent Psychiatry*, 2010, 19 (12), pp.883-892. 10.1007/s00787-010-0135-3 . hal-00628316

HAL Id: hal-00628316

<https://hal.science/hal-00628316>


Submitted on 2 Oct 2011

HAL is a multi-disciplinary open access archive for the deposit and dissemination of scientific research documents, whether they are published or not. The documents may come from teaching and research institutions in France or abroad, or from public or private research centers.

L'archive ouverte pluridisciplinaire **HAL**, est destinée au dépôt et à la diffusion de documents scientifiques de niveau recherche, publiés ou non, émanant des établissements d'enseignement et de recherche français ou étrangers, des laboratoires publics ou privés.

2.7.2010

Preventive interventions in families with parental depression: Children's psychosocial symptoms and prosocial behaviour

Tytti Solantaus ^{1,2}, E Juulia Paavonen¹, Sini Toikka³, Raija-Leena Punamäki⁴

1. National Institute of Health and Welfare, Child and Adolescent Mental Health
2. University of Tampere, School of Public Health
3. Finland's Slot Machine Association, Finland
4. Collegium of Advanced Studies, University of Helsinki, Finland

Column title: Prevention & Depression

 Tytti Solantaus

email Tytti.Solantaus@thl.fi

telephone +358 20 610 7625

mobile +358 50 595 0941

Fax +358 20 610 7155

ABSTRACT

Objective: The aim is to document the effectiveness of a preventive family intervention (Family Talk Intervention, FTI) and a brief psychoeducational discussion with parents (Let's Talk about the Children, LT) on children's psychosocial symptoms and prosocial behaviour in families with parental mood disorder, when the interventions are practiced in psychiatric services for adults in the Finnish National health service.

Method: Patients with mood disorder were invited to participate with their families. Consenting families were randomized to the two intervention groups. The initial sample comprised 119 families and their children aged 8-16. Of these, 109 completed the interventions and the baseline evaluation. Mothers and fathers filled out questionnaires including standardized rating scales for children's symptoms and prosocial behaviour at baseline and at four, ten and eighteen months post intervention. The final sample consisted of parental reports on 149 children with 83 complete data sets.

Results: Both interventions were effective in decreasing children's emotional symptoms, anxiety and, marginally, hyperactivity and in improving children's prosocial behaviour. The FTI was more effective than the LT on emotional symptoms particularly immediately after the intervention, while the effect of the LT emerged within a longer interval.

Conclusions: The study supports the effectiveness of both interventions in families with depressed parents. The Family Talk Intervention is applicable in cultural settings other than the USA. Our findings provide support for including preventive child mental health measures as part of psychiatric services for mentally ill parents.

Key words:

Parental depression, child mental health, preventive intervention, randomized trial

Introduction

Parental depression has extensive consequences on family life and on offspring social adjustment and mental health in childhood and in later life, depression and anxiety being the major psychiatric problems [5, 19, 40]. It is profoundly a family matter as depression changes one's behaviour and emotional presence. Insecurity, withdrawal and worry begin to characterize family relationships and negative family interactions have been documented to mediate between parental and child mental health problems [13, 14, 16, 22, 28, 32, 34].

The intergenerational transfer of psychiatric disorders and the present and predicted high depression rate among adults [24] have elicited an urgent need for promotion of child development and prevention of children's psychosocial symptoms and disorders as part of the services for families with parental depression [25, 31] [23, 25]. Fortunately, several preventive interventions for children with family adversity have been developed and found efficacious in randomized controlled trials [2, 7, 12, 17, 26, 33].

In Finland, the countrywide Effective Child & Family (EC&F) Programme was launched in 2001 to develop, study and implement preventive child mental health interventions in health services treating adult patients with mental health disorders [36]. It is a countrywide research, training and implementation programme for health and social services to attend to the needs of children and families with parental mental health and substance use disorder. The US originated Family Talk Intervention was adopted and a brief psychoeducational discussion with parents (Let's Talk about Children, LT) was developed for the EC&F Programme as well as a guide book for parents. This study belongs to the research arm of the EC&F Programme.

The Family Talk Intervention (FTI) aims to promote parenting and child development and prevent children's psychiatric problems in families with parental depression [6]. It is designed to enhance family communication and understanding concerning depression and to support interpersonal relationships in the family and children's social life outside the family, which have all been documented to build up family and child strengths and resilience [3, 25].

The efficacy of the FTI has been studied in comparison with a lecture intervention for parents in a randomized setting in the USA [2, 4, 7]. At the 4.5-year follow up the FTI group showed, relative to the lecture group, positive changes in family communication and children's understanding concerning parental depression. In addition, both interventions were associated with positive changes in family functioning and a decrease in children's depressive symptoms. The FTI has also been studied in African American and Latino

populations with similar results [15, 29]. However, recent research has shown that parental treatment and alleviation of parental symptoms is also reflected in decrease of children's symptoms [20, 21, 39], while this was not controlled in the US studies concerning the FTI.

Demonstration of efficacy is not enough for large scale implementation. Efficacy results are elicited in settings, which are optimal and highly controlled in order to ascertain the intervention impact on the expected outcomes. Efficacy studies are a test of the theoretical and empirical underpinnings of the interventions. Intervention delivery is carried out by highly trained experts, who enter the family or patient care only to carry out the given intervention. Furthermore, the interveners are usually given continuous supervision by the intervention developer to ensure adherence to the intervention protocol.

Concern has been expressed about evidence-based interventions not being implemented on a wide-scale basis and also about lack of effectiveness findings in public health services [25]. If an intervention is to be implemented on a large scale, it also needs to stand the test of 'real world' - those circumstances where it will be carried out when taken to scale. It means being practiced as part of standard services, i.e. (1) the intervention is carried out by grass root practitioners rather than outside experts, (2) the practitioners have been trained and they are experienced in carrying the intervention out as part of their services and (3) there is no such supervision, which is not intended to be part of the normal intervention practice. This is, indeed, the setting in our trial and this study will contribute its share to the understanding of taking preventive measures to standard services on a large scale.

In this paper, we study the effectiveness of the FTI [2, 6] and the LT. Both interventions have been previously reported to be safe and feasible in Finland, and parents reported increased understanding in the family, enhanced parenting, and feeling better immediately after the interventions [37]. Based on these findings and earlier research on the FTI [2, 7], we hypothesized that both interventions are associated with a positive impact on children's psychosocial symptoms and a promotion impact on children's prosocial behaviour, but more so in the FTI.

Methods

Study Design

This is a cluster, randomized, controlled intervention trial with approval of the ethical committee of the Hospital District of Helsinki and Uusimaa. The sample was studied at baseline (BL), and parental reports collected at 4, 10 and 18 months.

The Interventions

The FTI begins with two Parent Sessions covering personal and family history and psychoeducation about depression and resilience. A Child Session with each child follows. Children's psychosocial situation and their family experiences are mapped and possible questions concerning parental mental illness elicited. In the Planning Session, parents discuss with the clinician how to respond to children's questions, how to talk about depression with all family members present and how to best deal with possible family problems. In the Family Session the parents put mental illness into words for their children and answer children's questions with the clinician's help. Finally, the intervention is reviewed and plans for the future discussed in the Follow-Up Session with parents. In a family with one child, there are 6 sessions. The session number increases with the increasing child number.

The LT is a child-focused discussion conducted with the patient and possibly his/her partner to assess the child's situation and to provide information on how parents can support their children. The minimum discussion time was 15 minutes and the maximum two 45-minute sessions in the trial. Both interventions were manualized.

In both interventions, the parents were given a self help guide called *How Can I Help My Children, A Guide Book for Parents with Mental Health Problems* [35] and a standard information booklet about depression. If there was a need for other services, i.e. child psychiatric or social services, the families were helped in accessing them.

There was no practice as usual –group. Children's risks are so high in families with diagnosed parental depression that a no-discussion condition would have been unethical. The Child Welfare Act in Finland further provides that if a parent receives mental health services, the needs for care and support of dependent children are to be taken care of. The LT was developed with a minimal format so as to be as close as possible to practice as usual while also meeting the minimum requirements of the law.

Training

Clinicians working in mental health centres were trained to do the interventions. Training for the LT was three hours. Training for the FTI lasted about two years with 17 training days a year. The training included supervision of the trainees' cases as well as implementation issues.

Participants and procedure

Sixteen health care units in eight regional national health organizations located in different parts of the country participated in the study. Patients diagnosed in their medical records and currently treated for any

mood disorder defined in ICD-10 were invited to participate in the study with their partners, if they had at least one child aged 8 - 16 years not being treated for psychiatric disorder. Parental psychotherapy and comorbidity with both psychiatric and medical illness were allowed. However, schizophrenia and life threatening stage of a somatic disease of the parent or child, families with ongoing family therapy, custody dispute and immediate need for involvement of child protection services were excluded from the study.

Clinicians in the participating mental health units provided both verbal and written information of the study to the patients. Rights to refuse or later withdraw from the study were pointed out to the family members. Informed consent was obtained from parents and children over fifteen years of age, which is according to Finnish regulations. The parents were instructed to inform also younger children of their rights to refuse and withdraw from the study. Based on the clinicians' records, it was estimated that 40-45% of all eligible families consented to the study. As reported in more detail elsewhere [37], the major reasons for refusals were due to the patients themselves (about 35%) ("I am feeling better and want to put it behind", "I am not interested") and other family members not being willing to participate (about 40%).

The consenting families were randomized into two groups using computerized block randomization with block sizes 6-8. The clinicians carried out the interventions with their own patients, if the patient was randomized into the intervention type the clinician was trained to do. Otherwise a colleague trained in that particular intervention carried it out.

Measures

The Beck Depression Inventory (BDI) is a self-report measure to study parents' depressive symptoms [8]. There are 21 questions for measuring depressed feelings such as hopelessness and irritability, cognitions such as guilt or feelings of being punished, as well as physical symptoms. The responses are scored from 0 to 3, and a total score is calculated. The Spielberger State Anxiety Inventory (STAI) was used to measure parental anxiety [38]. It consists of 20 positively (e.g. 'I am calm') or negatively worded items ('I am nervous and restless') items that are rated on a four-point scale (0=not at all to 3=completely) and a total score is calculated. These scales were filled in at each time point.

Children's psychological symptoms and prosocial behaviour were measured by the 25-item Strengths and Difficulties Questionnaire (SDQ) which has good psychometric properties [10, 18]. The problem scale consists of 20 symptoms describing emotional, hyperactivity, conduct and peer problems. Both parents evaluated the fitness of the descriptions on a 3-point scale (0 = not at all, 1 = somewhat, 2 = yes, fit well). Four subscale scores, and a total score were constructed separately for mothers, fathers and children. Prosocial behaviour were assessed by the five-item scale in the SDQ. Children's anxiety was assessed by a

five-item version of Screen for Child Anxiety Related Emotional Disorders (SCARED) [9]. Parents rated the frequencies of children experiencing each symptom on a 3-point scale (0 =almost never, 1= sometimes, 3=often). A total score was obtained. Parental data reported comes from mothers and if the mother was missing, from the father.

The fidelity of the interventions was ascertained by logbooks filled out by practitioners. For the FTI, the logbooks listed the manualized topics for discussion and the practitioners marked down choices 'Discussed, yes/no'. Also the dates, participants and session types were documented in both interventions. According to Beardslee, as reported in [37], the FTI is carried out with fidelity if the family session (the second last session) is carried out. The LT was carried out with fidelity, if children were discussed for at least 15 minutes.

Sample

The initial sample consisted of 119 families (60 LT, 59 FTI). Six families (3 LT, 3 FTI) withdrew from the study before baseline assessment. Both the baseline evaluation and the interventions were completed by 109 families (56 LT, 53 FTI). The final sample (with the main outcome measures) consisted of 53 and 53 families at baseline, 43 and 35 families at four months, and 40 and 39 families at 10 months and 44 and 40 families at 18 months in the LT and FTI, respectively (Figure 1). The initial refusal rate was 9.2%, and dropout rates were 24.6% (LT) and 34.0% (FTI) at 4 months and 29.8% (LT) and 26.4% (FTI) at 10 months and 22.8% (LT) and 24.5% (FTI) at 18 months (compared with the number of intervention completers at BL). The final sample consisted of parental reports on 149 children with 83 (43 LT, 40 FTI) having complete data sets. There were no significant differences in the response rates between the two intervention groups (all p 's >0.157) and the patient's gender either did not affect the response rates (all p 's >0.108). The drop out analyses revealed that patient's lower level depression ($p=0.047$) and anxiety ($p=0.031$) at baseline, but not children's psychiatric symptom levels (all p 's > 0.07) predicted participation in the forthcoming data collection rounds.

Statistical methods

We first studied whether there were any significant baseline group differences using t-test for independent samples for continuous variables and χ^2 tests for categorical variables. Next we compared group differences in the changes of the symptom and behaviour scores using repeated measures ANOVA (BL vs. 4 mo, BL vs. 10 mo and BL vs 18 mo). Because parental depression can modify the findings, we statistically controlled for the patient's baseline BDI as well as its change over the corresponding time period in the models. To compare longitudinally the average change in each group and to take into account the dependence between the siblings, we used linear mixed effects models with two random effects (for dependence over

time and over siblings). However, due to the small number of families with more than one child, the intra-class correlation could not be estimated in every model. Whenever it could be estimated, the p-values changed only slightly, suggesting that the models are robust and that familial clustering had only a minimal impact on the findings. Final models control for dependence over time assuming autoregressive covariance structure that provided the best fit of the models. All the response variables were continuous and they were skewed only to some extent, which means that the normality assumptions of the parametric tests were not violated. None of the unequally distributed baseline variables affected the interpretation of the models.

Results

The intervention groups were similar in their baseline demographic factors, except for mothers' lower education and the larger number of divorced/separated families in the FTI (Table 1). The psychiatric characteristics of the participating parents were similar in both intervention groups. Of the mothers, 67 had a diagnosis of unipolar depression (33 in the LT, 34 in the FTI), eight had a diagnosis of bipolar depression (5 in the LT, 3 in the FTI) and 4 had a diagnosis of anxiety disorder with depression (2 in the LT, 2 in the FTI). There were also two mothers whose diagnoses were not reported. Of the fathers, 26 had a diagnosis of unipolar depression (13 in the LT, 13 in the FTI) and 6 had a diagnosis of bipolar depression (3 in the LT, 3 in the FTI). There were no statistical significant differences between the two intervention groups (all p's > 0.479). Most patients had had symptoms at least for a year, which reflects the well-known chronicity of depression.

The logbooks filled out by clinicians showed that both interventions were carried out with fidelity. All Family Talk Interventions included all of the different session types. The LT was carried out in one full session in 76% and in two sessions in 24% of the families.

As reported in Table 2 and shown in Figure 2, we found that children's emotional symptoms (SDQ) generally decreased during the follow-up ($p=0.036$) and time * group -interaction effect ($p = 0.040$) indicated differences between the FTI and LT intervention when controlling for the patient's depressiveness at baseline and its change over time. Repeated ANOVA specified that the greatest decrease in emotional symptoms happened in the FTI from baseline to four months, and in the LT from four to ten months, while there were no group differences from ten to eighteen month follow-up. Furthermore, children's anxiety decreased significantly in both intervention groups ($p = 0.003$) and hyperactivity tended to decrease although the change did not reach statistical significance ($p = 0.072$). Finally, children's prosocial behaviour improved in both groups ($p < 0.001$). Again, the repeated ANOVA specified that the

change emerged in the FTI group between baseline and four months, while it happened in the LT between ten and eighteen months. The results were similar when we did not covariate for the parental depression level.

DISCUSSION

Our concern is the transfer of mental illness from generation to generation and our interest is to learn how to contribute to breaking the cycle in everyday clinical practice in the health care system. We studied the effectiveness of two interventions, the more extensive Family Talk Intervention (FTI) and a short child focused Let's Talk about Children discussion (LT), when the interventions were carried out in psychiatric health services for adults. Both interventions were coupled with a guide book for parents.

As hypothesized, both interventions were associated with children's mental health and the effects could be still documented at 1,5 year follow up. The main aim of the interventions is to prevent the rise of children's psychosocial symptoms, and thereby eventually prevent outbreak of depressive and anxiety disorders in the offspring. The interventions did not only prevent the rise in children's symptoms, but even led to a decrease in these symptoms in both groups. As we were able to control for the parents' depression, these positive changes were not due to alleviation of parental depression, which is known to be associated with symptom reduction in children [20, 21, 39].

Children's prosocial behaviour improved and emotional symptoms, anxiety and, marginally, hyperactivity decreased both in the FTI and the LT, while the FTI was more effective in reducing emotional symptoms relative to the LT. The higher effectiveness of FTI was time-dependent.

It is noteworthy that the positive changes in the FTI tend to happen during the first four months, while the change in the LT takes more time. The FTI involves the whole family and also directly children and the intended family process is initiated during the intervention itself. In contrast, the impact of the LT on children is mediated totally through parents. Parents are given information, which they most likely process within themselves before they involve children, and the family process itself is likely to be slower.

Our study is the first one to document the effectiveness of the FTI over and above the control intervention. The US and Finnish studies have methodological differences which may explain this. Our study was a questionnaire study, while the Beardslee et al. study was interview-based. These discussions with the families may have increased the effectiveness of the lecture group. They might also predispose to report bias, i.e. parents may less openly express negative views on the interventions, when they are interviewed in person. The second difference concerns the study settings. As our study was carried out in real-world

conditions, the interventions were imbedded in the patient's normal treatment process. Therefore, the interveners may have been able to link the psycho-educational material and intervention process more closely to the patient's and the family's personal experiences and life situation. This is, indeed, the aim in the FTI and might contribute to its effectiveness in our trial. The effects of the FTI might be even stronger in real-world than in highly controlled efficacy trials.

Both interventions were related to a significant decrease in children's anxiety and marginal decrease in hyperactivity. Anxiety is linked with experiences of threat and insecurity about the present and the future, which often characterize families with parental mental illness [13, 14]. Hyperactivity in turn can be understood as a behavioural response to the fear, worry and relationship problems documented in families with parental depression [1]. Hyperactivity can evoke punitive parenting practices thus accelerating family problems.

The main focus of our preventive interventions is to help family members to come together to master the family situation and to find strategies to deal with problems in a constructive way. This might build up a sense of security for all family members. We have, indeed, previously reported that a majority of parents in both interventions experienced increased confidence in children's and family future and a decrease in their worries [37]. The present findings suggest that our interventions are successful in actually alleviating children's problems and enhancing promotive behaviour.

Promotion of protective factors is an important goal in preventive and promotion efforts. Prosocial behaviour provides means for children to solve interpersonal problems constructively and to strengthen their relationships. Connectedness to peers and family is essential for healthy development [25] and one of the key protective factors for children in families with parental mental health problems [3]. Both interventions promoted in the long run children's prosocial behaviour and thereby our finding suggests that they have not only preventive but also promotion capacity.

The relative similarity in the effectiveness of the intensive, family based FTI and the brief parent based LT is relevant for preventive policies. The costs of the FTI exceed those of the LT, but the FTI brings more immediate improvements to the children. Families with depressed parents are not a homogeneous group, but differ in their resources and vulnerabilities. Ideally depressed patients with children should be offered preventive alternatives tailored to their needs. Further research should shed light on the mechanisms of positive change and identify families who benefit from one intervention rather than from the other. These questions are important for clinical practice as well as for further intervention development.

It has been argued that intervention development should include its applicability in other than the original culture [27]. The FTI has been studied in middle class, predominantly white population [2, 7] as well as African American and Latino populations in the USA with favourable results [29, 30]. Our positive findings in the Finnish health care provide strong support for the applicability of the FTI in new cultural settings, albeit within the Western cultural sphere.

Apart from the actual effectiveness findings, the study provides evidence that attending to the preventive child mental health needs is possible and effective in services for adults. The preventive interventions were implemented in the Finnish National health service and carried out as part of the treatment protocol for adult patients with mood disorder. The Effective Child & Family Programme [36] thus presents a new approach, even a paradigm change for psychiatric services by including promotion of parenting and prevention of child mental health problems in the treatment for the adult psychiatric patient.

Strengths and limitations of the study

The strength of our study is in its nature as a true effectiveness study carried out by 'lay' practitioners in the national health services. As such it forms the next step [23] from the highly controlled efficacy studies in the process of intervention development and implementation.

There are also limitations, the main concern being the initial refusal rate (about 55-60%) and drop out rate during the study (about 25%). It is common that prevention trials report high refusal and attrition rates [11, 27]. Large fraction of those who have initially consented, never participate in the intervention or withdraw during the study [25]. It seems more difficult to promote subject involvement and adherence in preventive than in treatment trials. This is understandable as preventive interventions deal with predicted but not present problems. Furthermore, many subjects in risk groups never develop problems and their refusal to participate in preventive interventions can be considered rational. In addition, our study involved whole families. In family approaches, all family members have to consent to the study, which lowers the consent rate compared to interventions for individuals. This was also seen in our study.

On the other hand, in some families, the depression itself might contribute to lack of energy and motivation to participate. This was the case also in our study, since the initial level of depression and anxiety was higher in those who withdrew during the study than in those who persisted. It may interfere in the generalizability of our findings for parents with severe symptoms.

Furthermore, the effectiveness design in our study might have also contributed to the refusal and attrition. Our interventions were imbedded in the patients' normal clinical visits and carried out by the health care staff, while in efficacy studies, e.g. the Beardslee et al. study [1, 6] the families receive visits from outside experts coming from a prestigious research centre. This might raise the families' motivation and it presents one further difference between a real-world effectiveness and a controlled efficacy study. Finally, we offered no pay for participation, which is the standard in Finland.

A further limitation is the lack of a control, no-interference group. The LT was a very brief intervention, but it did depart from earlier practice in that children were systematically discussed and parents received the self help booklet [35]. A no-interference control group would have been needed to document a true prevention effect, i.e. a possible rise of symptoms in the control group with no change in the study group. The decrease of symptoms presented here is a treatment rather than prevention effect, although it might prevent the development of full blown disorder in a longer follow-up.

Finally, child reports should also be studied. It is important to learn about children's own experiences of their well being and family. Multiple informants also contribute to a more comprehensive understanding of family dynamics.

Conclusions

Our study is the first to document the effectiveness of preventive child mental health interventions when taken to psychiatric services for adults in a national health care system. The FTI and the brief LT stand the test of 'real world', and can be taken to scale. The FTI can be adopted across cultural boundaries at least within the Western cultural sphere. The study shows further how even just a brief discussion with parents coupled with a guidebook to support parenting is associated with parental reports on favourable changes in children's well being. This reflects depressed parents' immanent need and openness for support, when it is available as part of their own treatment.

The study provides evidence base for including preventive child mental health interventions in the treatment protocols for adult depressed patients. There are methods available, practitioners can be trained to do them, and the results are favourable. Our study gives support to the countrywide EC&F Programme in Finland [36] in its efforts to make a system change in psychiatric services for adults to include child mental health promotion and disorder prevention.

We hope that our findings encourage decision makers and clinicians also beyond Finland to heed to the needs of mentally ill parents and their children. This call for action has recently been expressed in NRC and IOM report [25] and in the editorial of American Journal of Psychiatry [31]. Norway and Sweden have joined Finland in legislating mental health promotion and disorder prevention for dependent children in health services for adults from the beginning of 2010. In Finland, the preventive and promotive work has extended to psychiatric patients with other than depression diagnosis, to parents with alcohol and drug abuse problems, to parents with severe somatic illness especially in cancer clinics, and to families with child protection needs. The training of the FTI has been condensed to 10-12 days.

Acknowledgements: We would like to thank all family members, clinics and clinicians who participated in the trial and made it possible. The study was funded by Finnish Academy Grants 77553; 215242; 209610 (TERTTU); 204337. KELA Dno 5/26/2006. Financial disclosure: The authors have no financial relationships to disclose.

References

1. Ashman SB, Dawson G, Panagiotides H (2008) Trajectories of maternal depression over 7 years: relations with child psychophysiology and behavior and role of contextual risks. *Dev Psychopathol* 20:55-77
2. Beardslee WR, Gladstone TR, Wright EJ, Cooper AB (2003) A family-based approach to the prevention of depressive symptoms in children at risk: evidence of parental and child change. *Pediatrics* 112:e119-131
3. Beardslee WR, Podorefsky D (1988) Resilient adolescents whose parents have serious affective and other psychiatric disorders: importance of self-understanding and relationships. *Am J Psychiatry* 145:63-69
4. Beardslee WR, Salt P, Versage EM, Gladstone TRG, Wright EJ, Rothberg PC (1997) Sustained Change in Parents Receiving Preventive Interventions for Families With Depression. *American Journal of Psychiatry* 154:510-515
5. Beardslee WR, Versage EM, Gladstone TRG (1998) Children of Affectively Ill Parents: A Review of the Past 10 Years. *Journal of the American Academy of Child & Adolescent Psychiatry* 37:1134-1141
6. Beardslee WR, Wright E, Rothberg PC, Salt P, Versage E (1996) Response of Families to Two Preventive Intervention Strategies: Long-Term Differences in Behavior and Attitude Change. *Journal of the American Academy of Child & Adolescent Psychiatry* 35:774-782
7. Beardslee WR, Wright EJ, Gladstone TR, Forbes P (2007) Long-term effects from a randomized trial of two public health preventive interventions for parental depression. *J Fam Psychol* 21:703-713
8. Beck AT, Ward CH, Mendelson M, Mock J, Erbaugh J (1961) An inventory for measuring depression. *Arch Gen Psychiatry* 4:561-571
9. Birmaher B, Brent DA, Chiappetta L, Bridge J, Monga S, Baugher M (1999) Psychometric properties of the screen for child anxiety related emotional disorders (SCARED): a replication study. *Journal of the American Academy of Child and Adolescent Psychiatry* 38:1230-1236
10. Bourdon KH, Goodman R, Rae DS, Simpson G, Koretz DS (2005) The Strengths and Difficulties Questionnaire: U.S. normative data and psychometric properties. *Journal of the American Academy of Child & Adolescent Psychiatry* 44:557-564
11. Braver SL, Smith MC (1996) Maximising both internal and external validity in longitudinal true experiments with voluntary treatments. The "combined modified" design. *Evaluation and Programme Planning* 19:287-300
12. Clarke GN, Hornbrook M, Lynch F, Polen M, Gale J, Beardslee W, O'Connor E, Seeley J (2001) A randomized trial of a group cognitive intervention for preventing depression in adolescent offspring of depressed parents. *Arch Gen Psychiatry* 58:1127-1134
13. Cummings EM (1995) Security, emotionality, and parental depression. *Dev Psychol* 31:425-427
14. Cummings EM, Davies PT (1994) Maternal depression and child development. *Journal of Child Psychology & Psychiatry* 35:73-112
15. D'Angelo EJ, Llerena-Quinn R, Shapiro R, Colon F, Rodriguez P, Gallagher K, Beardslee WR (2009) Adaptation of the preventive intervention program for depression for use with predominantly low-income Latino families. *Family Process* 48:269-291
16. Downey G, Coyne JC (1990) Children of Depressed Parents: An Integrative Review. *Psychological Bulletin* 108:50-76
17. Garber J, Clarke GN, Weersing VR, Beardslee WR, Brent DA, Gladstone TRG, Debar LL, Lynch FL, D'Angelo E, Hollon SD, Shamseddeen W, Iyengar S (2009) Prevention of Depression in At-Risk Adolescents. A randomized controlled trial. *JAMA* 301:2215-2224
18. Goodman R (1997) The Strengths and Difficulties Questionnaire: A research note. *Journal of Child Psychology and Psychiatry*, 38:581-586
19. Goodman SH, Gotlib IH (2002) Children of depressed parent. Mechanisms of risk and implications for treatment. American Psychological Association, Washington DC
20. Gunlicks ML, Weissman MM (2008) Change in child psychopathology with improvement in parental depression: a systematic review. *J Am Acad Child Adolesc Psychiatry* 47:379-389

21. Kennard BD, Hughes JL, Stewart SM, Mayes T, Nightingale-Teresi J, Tao R, Carmody T, Emslie GJ (2008) Maternal depressive symptoms in pediatric major depressive disorder: relationship to acute treatment outcome. *J Am Acad Child Adolesc Psychiatry* 47:694-699
22. Leinonen JA, Solantaus TS, Punamäki RL (2003) Parental mental health and children's adjustment: the quality of marital interaction and parenting as mediating factors. *J Child Psychol Psychiatry* 44:227-241
23. Mrazek PJ, Haggerty RJ (eds) (1994) Reducing risks for mental disorders: frontiers for preventive intervention research. National Academy Press, Institute of Medicine, Washington
24. Murray CJL, Lopez AD (eds) (1996) The global burden of disease. Harvard University Press on behalf of the World Health Organization, Cambridge
25. National Research Council and Institute of Medicine (2009) Preventing Mental, Emotional, and Behavioral Disorders Among Young People: Progress and Possibilities. Committee on Prevention of Mental Disorders and Substance Abuse Among Children, Youth, and Young Adults: Research Advances and Promising Interventions. The National Academies Press, Washington, DC
26. Niemelä M, Hakko H, Räsänen S (2009) A systematic narrative review of the studies on structured child-centred interventions for families with a parent with cancer. *Psycho-Oncology* epub ahead print
27. Olds DL, Sadler L, Kitzman H (2007) Programs for parents of infants and toddlers: recent evidence from randomized trials. *J Child Psychol Psychiatry* 48:355-391
28. Pilowsky DJ, Wickramaratne P, Nomura Y, Weissman MM (2006) Family discord, parental depression, and psychopathology in offspring: 20-year follow-up. *J Am Acad Child Adolesc Psychiatry* 45:452-460
29. Podorefsky DL, McDonald-Dowdell M, Beardslee WR (2001) Adaptation of preventive interventions for a low-income, culturally diverse community. *J Am Acad Child Adolesc Psychiatry* 40:879-886
30. Podorefsky DL, McDonald-Dowdell M, Beardslee WR (2001) Adaptation of Preventive Interventions for a Low-Income, Culturally Diverse Community. *J. Am. Acad. Child Adolesc. Psychiatry* 40:879-886
31. Reiss D (2008) Transmission and treatment of depression. *Am J Psychiatry* 165:1083-1085
32. Rutter M (1990) Commentary: Some processes and focus considerations considering effects of parental depression on children. *Dev Psychol* 26:60-67
33. Sandler IN, Ayers TS, Wolchik SA, Tein JY, Kwok OM, Haine RA, Twohey-Jacobs J, Suter J, Lin K, Padgett-Jones S, Weyer JL, Cole E, Kriege G, Griffin WA (2003) The family bereavement program: efficacy evaluation of a theory-based prevention program for parentally bereaved children and adolescents. *J Consult Clin Psychol* 71:587-600
34. Solantaus-Simula T, Punamäki R-L, Beardslee MD (2002) Children's responses to low parental mood. II: associations with family perceptions of parenting styles and child distress. *Journal of the American Academy of Child & Adolescent Psychiatry* 41:287-295
35. Solantaus T, Ringbom A (2002) Miten autan lastani? Opas vanhemmille, joilla on mielenterveyden ongelmia. Picascript, Helsinki
36. Solantaus T, Toikka S (2006) The effective family programme. Preventative services for the children of mentally ill parents in Finland. *International Journal of Mental Health Promotion* 8:37-44
37. Solantaus T, Toikka S, Alasuutari M, Beardslee WR, Paavonen EJ (2009) Safety, feasibility and family experiences of preventive interventions for children and families with parental depression. *International Journal of Mental Health Promotion* 11:14-23
38. Spielberger C, Gorsuch RL, Lushene RE (1970) The state-trait anxiety inventory. Consulting Psychologist Press, Palo Alto, CA
39. Weissman MM, Pilowsky DJ, Wickramaratne PJ, Talati A, Wisniewski SR, Fava M, Hughes CW, Garber J, Malloy E, King CA, Cerda G, Sood AB, Alpert JE, Trivedi MH, Rush AJ (2006) Remissions in maternal depression and child psychopathology: a STAR*D-child report. *JAMA* 295:1389-1398
40. Weissman MM, Wickramaratne P, Nomura Y, Warner V, Pilowsky D, Verdelli H (2006) Offspring of depressed parents: 20 years later. *Am J Psychiatry* 163:1001-1008

Figure 1. Participant flow chart showing numbers of families randomly assigned.

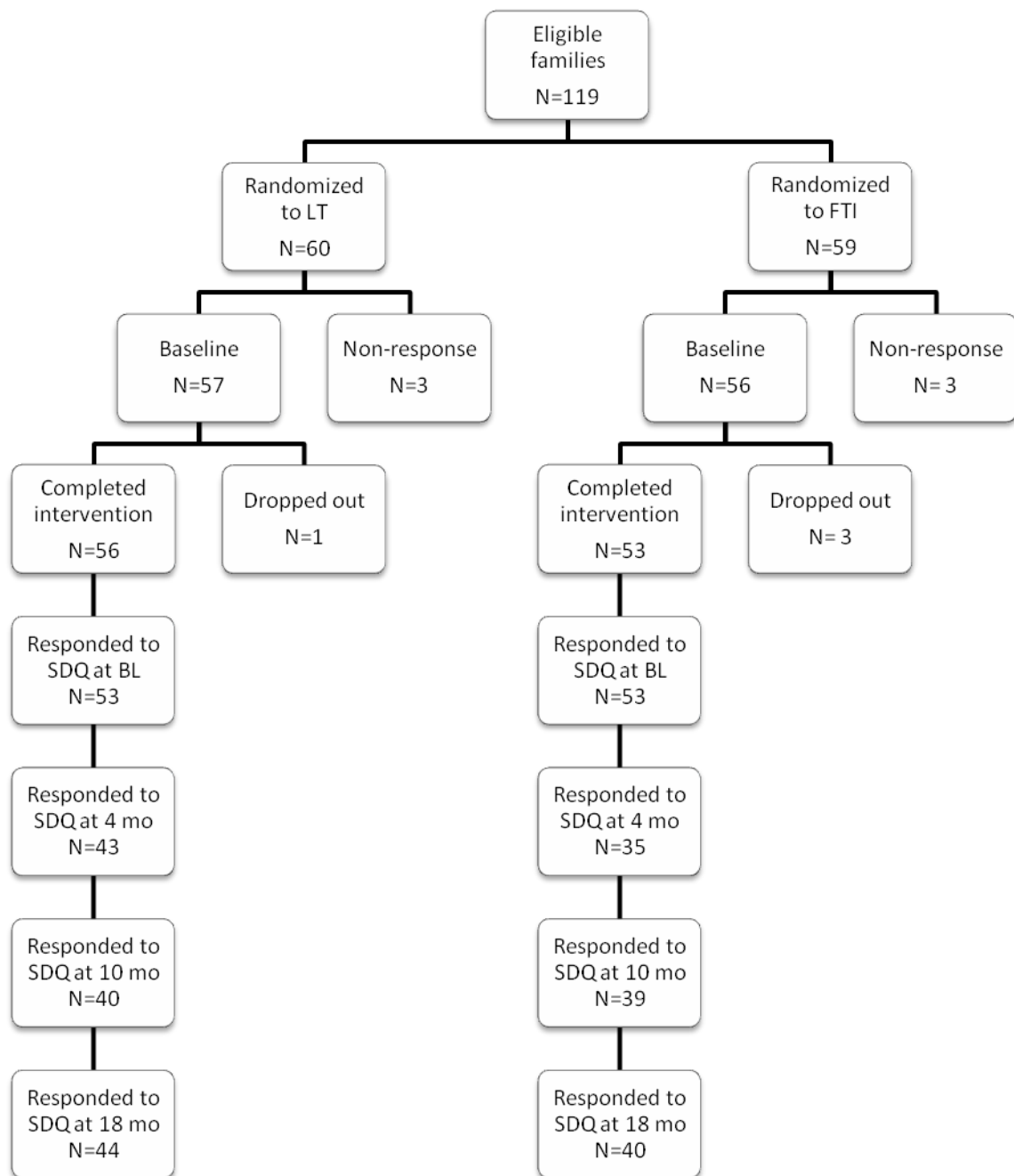


Table 1. Demographic and diagnostic data of the participating families

	LT N=53	FTI N=53	p
Number of participants at BL mothers fathers children	51 35 67	50 34 78	
Family structure both parents mother only father only	33 (62.3%) 18 (34.0%) 2 (3.8%)	31 (58.5%) 19 (35.8%) 3 (5.7%)	0.865
Number of children * one two three four five six or more	23 (45.1%) 15 (29.4%) 6 (11.8%) 6 (11.8%) 1 (2.0%) 0 (0.0%)	13 (26.5%) 12 (24.5%) 11 (22.4%) 8 (16.3%) 2 (4.1%) 3 (6.0%)	0.318
Marital status unmarried married or living together divorced/separated/widow	9 (17.6%) 35 (68.6%) 7 (13.7%)	3 (6.0%) 32 (64.0%) 15 (30.0%)	0.049
Mother's employment gainfully employed a student house wife unemployed or layed off retired doing something else	31 (60.8%) 2 (3.9%) 1 (2.0%) 7 (13.7%) 2 (3.9%) 8 (15.7%)	27 (54.0%) 0 (0.0%) 4 (8.0%) 8 (16.0%) 5 (10.0%) 6 (12.0%)	0.387 (F)
Father's employment gainfully employed a student house father unemployed or layed off retired doing something else	24 (70.6%) 0 (0.0%) 0 (0.0%) 4 (11.8%) 2 (5.9%) 4 (11.8%)	21 (61.8%) 0 (0.0%) 1 (2.9%) 5 (14.7%) 4 (11.8%) 3 (8.8%)	0.823 (F)
Mother's education no professional training vocational course(s) vocational training technical college or vocational institute university else	3 (5.9%) 5 (9.8%) 7 (13.7%) 25 (49.0%) 10 (19.6%) 1 (2.0%)	8 (16.0%) 11 (22.0%) 8 (16.0%) 14 (28.0%) 6 (12.0%) 3 (6.0%)	0.085
Father's education no professional training vocational course(s) vocational training technical college or vocational institute university else	3 (8.8%) 2 (5.9%) 8 (23.5%) 10 (29.4%) 9 (26.5%) 2 (5.9%)	5 (14.7%) 9 (26.5%) 5 (14.7%) 7 (20.6%) 7 (20.6%) 1 (2.9%)	0.232
Patient mother only father only both parents	37 (69.8%) 12 (24.5%) 3 (5.7%)	37 (69.8%) 12 (22.6%) 4 (7.5%)	0.913

Patient's BDI at baseline	20.9(11,9)	23.3(13.0)	0.322
Patient's BDI at 4 months	18.0(14,7)	21.1(13.3)	0.346
Patient's BDI at 10 months	19.4(16,4)	19.7 (13.2)	0.931
Patient's BDI at 18 months	19.4(16,4)	19.7(13.2)	0.931
When did the patient's symptoms start **			
< 6 mo ago	6 (13.3%)	8 (17.8%)	0.859
6-12 mo ago	11 (24.4%)	11 (24.4%)	
12-18 mo ago	6 (13.3%)	3 (6.7%)	
18-24 mo ago	5 (11.1%)	5 (11.1%)	
> 24 mo ago	17 (37.8%)	18 (40.0%)	

* Of these 8-16 yr old children were eligible for the study

** Mother was considered as the patient, if both parents had depression

F Fischer's exact test

Table 2. Children's symptom scores according to parents in the two intervention groups at Baseline (BL), 4 month, 10 month and eighteen months follow-ups.

	BL		4 mo		10 mo		18 mo		BL vs 4 mo (a)		BL vs 10 mo (b)		BL vs 18 mo (c)		MIXED (d)	
	LT	FTI	LT	FTI	LT	FTI	LT	FTI	time*	time*	time*	time*	time*	time*	time*	time*
	mean (SD)*	mean (SD)*	mean (SD)*	mean (SD)*	mean (SD)*	mean (SD)*	mean (SD)*	mean (SD)*	p	p	p	p	p	p	p	p
Emotional symptoms	2.18 (2.08)	2.46 (2.03)	2.26 (2.16)	1.53 (1.46)	1.85 (2.17)	1.88 (1.82)	1.73 (1.77)	1.77 (1.84)	0.196	0.012	0.009	0.430	0.005	0.478	0.036	0.040
Hyperactivity	2.54 (2.13)	2.75 (2.44)	2.76 (2.30)	2.53 (2.19)	2.17 (2.00)	2.33 (2.27)	2.49 (2.57)	2.42 (2.09)	0.808	0.201	0.470	0.442	0.051	0.445	0.072	0.884
Conduct problems	1.93 (1.41)	2.29 (1.71)	1.80 (1.69)	2.04 (1.50)	1.83 (1.62)	2.12 (1.70)	1.58 (1.38)	2.00 (1.97)	0.019	0.189	0.515	0.142	0.105	0.216	0.608	0.442
Peer problems	1.91 (1.95)	1.87 (1.82)	1.73 (1.55)	1.65 (1.37)	2.17 (1.98)	1.67 (1.69)	2.06 (2.06)	1.58 (1.61)	0.988	0.515	0.763	0.163	0.699	0.429	0.176	0.425
Total symptoms	8.56 (5.52)	9.37 (5.87)	8.55 (5.61)	7.75 (4.32)	8.02 (5.99)	8.00 (5.45)	7.85 (5.97)	7.76 (5.32)	0.158	0.015	0.144	0.094	0.016	0.181	0.252	0.259
Prosocial behaviour	6.86 (2.22)	6.14 (2.41)	6.90 (2.02)	7.06 (1.77)	6.79 (2.25)	6.87 (2.45)	7.79 (2.18)	7.75 (2.00)	0.153	0.021	0.173	0.024	<0.001	0.084	<0.001	0.157
Anxiety	1.29 (1.53)	1.71 (1.56)	NA	NA	1.00 (1.50)	1.47 (1.66)	1.06 (1.43)	1.18 (1.58)	NA	NA	0.034	0.997	0.034	0.183	0.003	0.230

* crude mean and standard deviation (SD)

a) covariated for the patient's baseline BDI and its change over BL vs 4 mo, N=98

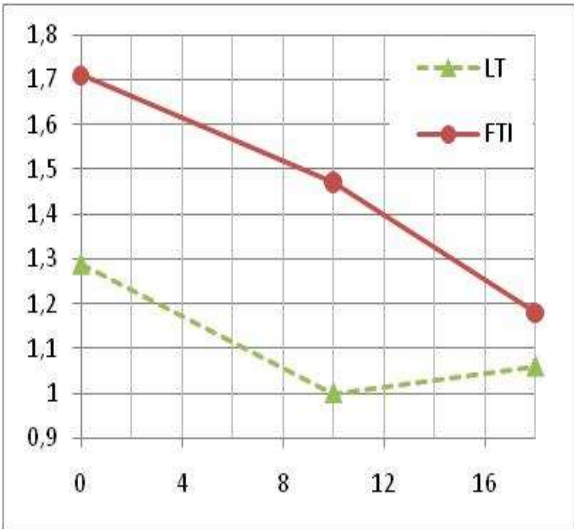
b) covariated for the patient's baseline BDI and its change over BL vs 10 mo, N=106

c) covariated for the patient's baseline BDI and its change over BL vs 18 mo, N=100

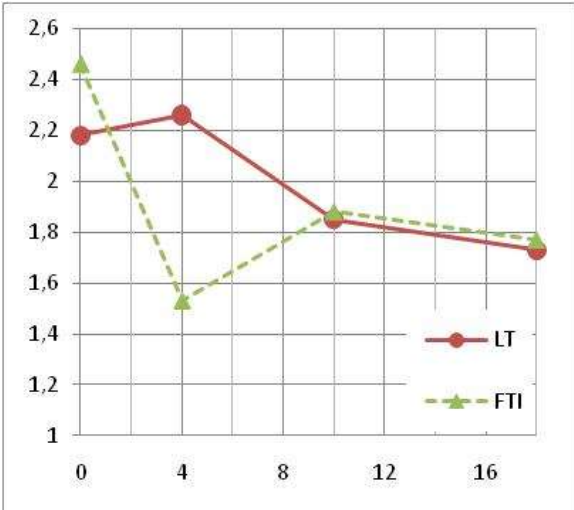
d) covariated for the patient's baseline BDI and its change over time, N=107

Figure 2. Graphical representations of the change in children’s emotional symptoms and anxiety as well as prosocial behaviour in the FTI and LT interventions.

Emotional symptoms



Anxiety



Prosocial
behaviour

