

# Object-based Layered Depth Images for improved virtual view synthesis in rate-constrained context

Vincent Jantet <sup>1</sup>, Christine Guillemot <sup>2</sup>, Luce Morin <sup>3</sup>

<sup>1</sup> ENS Cachan, Antenne de Bretagne, Campus de Ker Lann, 35170 Bruz – France

<sup>2</sup> INRIA Rennes, Bretagne Atlantique, Campus de Beaulieu, 35042 Rennes – France

<sup>3</sup> IETR - INSA Rennes, 20 avenue des Buttes de Coësmes, 35043 Rennes – France

ICIP 2011



# Context of multi-view videos

## Functionalities:

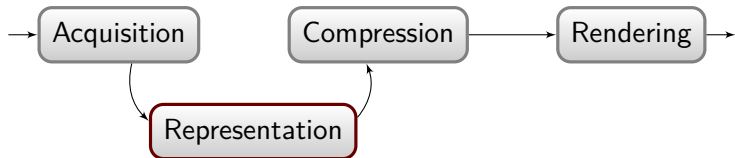
**3DTV:** Depth feeling by stereo-vision simulation.

**FVV:** Live viewpoint selection.

Require a virtual view synthesis method.



Fig: 3D rendering



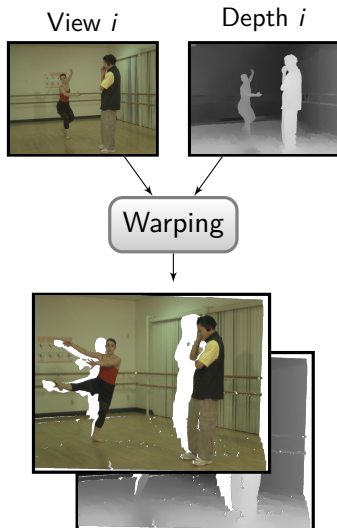
# Table on contents

- 1 Introduction
- 2 Object-based classification
- 3 Rendering results
- 4 Compression results

# Outline

- 1 Introduction
- 2 Object-based classification
- 3 Rendering results
- 4 Compression results

# Depth Image-Based Rendering (DIBR)



## Warping algorithm

**Input:** View and associated depth map

**Output:** New viewpoint (texture & depth)

## Disocclusions

Obstructed scene information from reference viewpoint

They appear along depth discontinuities

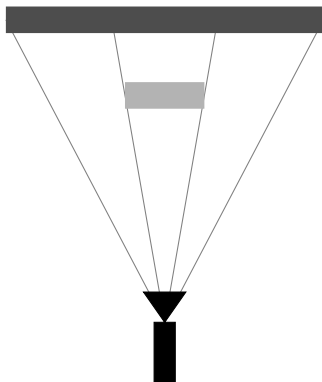
Solution: Add additional informations (**LDI**)



Fig: Disocclusion

# Layered Depth Image (LDI) [SGHS98]

A set of layers, containing depth pixels from a single viewpoint



## From a reference viewpoint

**1<sup>st</sup> layer**  $\Rightarrow$  Reference view

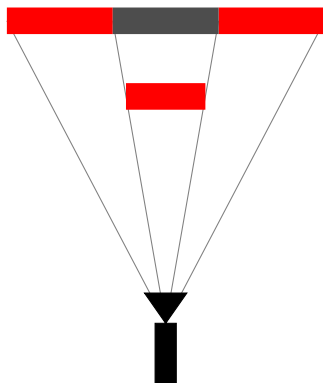
Visible texture and depth

**2<sup>nd</sup> layer**  $\Rightarrow$  Residual data

Hidden texture and depth

# Layered Depth Image (LDI) [SGHS98]

A set of layers, containing depth pixels from a single viewpoint



From a reference viewpoint

**1<sup>st</sup> layer**  $\Rightarrow$  Reference view

Visible texture and depth

**2<sup>nd</sup> layer**  $\Rightarrow$  Residual data

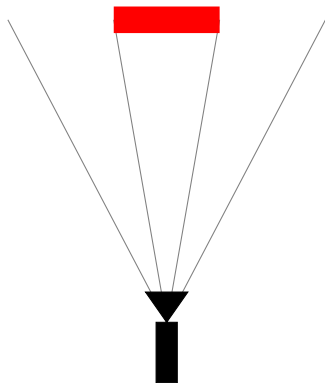
Hidden texture and depth



1<sup>st</sup> layer

# Layered Depth Image (LDI) [SGHS98]

A set of layers, containing depth pixels from a single viewpoint



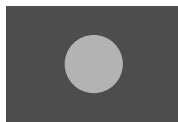
From a reference viewpoint

**1<sup>st</sup> layer**  $\Rightarrow$  Reference view

Visible texture and depth

**2<sup>nd</sup> layer**  $\Rightarrow$  Residual data

Hidden texture and depth



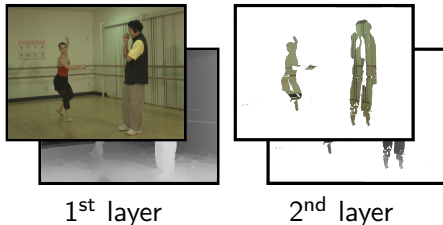
1<sup>st</sup> layer



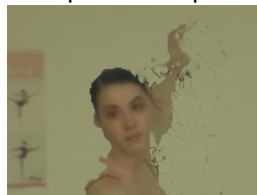
2<sup>nd</sup> layer



# LDI from real multi-view plus depth sequence [JMG09]



Compressed depth map



Synthesized virtual view

## Limitations

- Redundant boundaries in both layers
- Moving elements in both layers
- Layers contain large depth discontinuities (Discontinuities are hard to compress)

Fig: Rendering impact of depth map compression

# Outline

- 1 Introduction
- 2 Object-based classification**
- 3 Rendering results
- 4 Compression results

# Object-based LDI representation

This representation organizes pixels into layers to enhance depth continuity



1<sup>st</sup> layer



2<sup>nd</sup> layer

Fig: Classical LDI depth layers



Foreground



Background

Fig: Object-based LDI depth layers

## Method based on a growing-region algorithm

Region  $R$  initialized with pixels where  $Z_{FG}$  and  $Z_{BG}$  are already defined.

For each pixel  $q$  outside  $R$ :

- Extrapolate  $Z_{FG}$  and  $Z_{BG}$ .
- Classify  $q$ .

# Object-based LDI representation

This representation organizes pixels into layers to enhance depth continuity



1<sup>st</sup> layer



2<sup>nd</sup> layer

Fig: Classical LDI depth layers



Foreground



Background

Fig: Object-based LDI depth layers

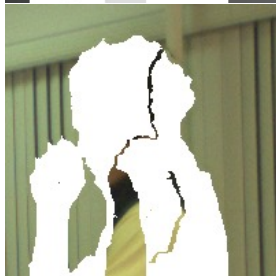
## Method based on a growing-region algorithm

Region  $R$  initialized with pixels where  $Z_{FG}$  and  $Z_{BG}$  are already defined.

For each pixel  $q$  outside  $R$ :

- Extrapolate  $Z_{FG}$  and  $Z_{BG}$ .
- Classify  $q$ .

# Classification: Initializing

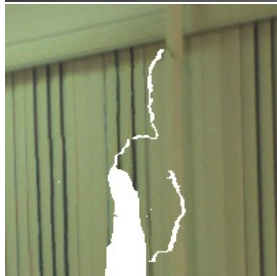


Foreground

Unclassified

Background

# Classification: Results



Foreground

Unclassified

Background

# Background inpainting [CPT03]

## Advantages

- Remove unnecessary boundaries
- Inpainting processed once, before encoding stage
- No need of inpainting method at rendering stage



Fig: Background inpainting

# Outline

- 1 Introduction
- 2 Object-based classification
- 3 Rendering results**
- 4 Compression results



# Rendering results



Classical LDI rendering   Virtual view inpainting   O-LDI rendering

# Fast mesh-based rendering

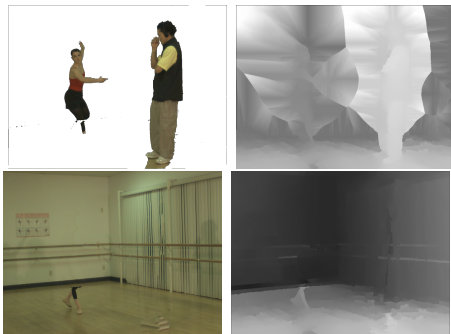


Fig: Object-based LDI

Continuous layers can be rendered as meshes.  
Foreground mesh is partially transparent.

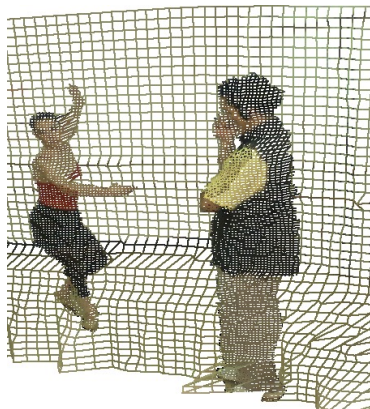


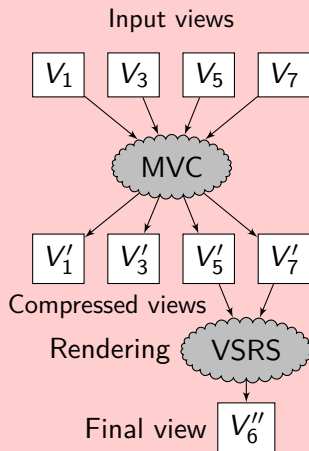
Fig: Meshes rendering

# Outline

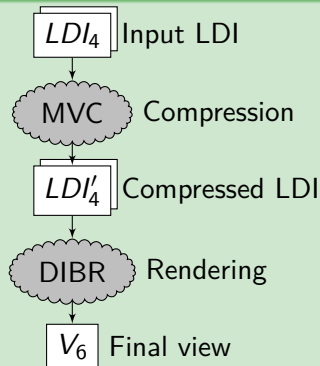
- 1 Introduction
- 2 Object-based classification
- 3 Rendering results
- 4 Compression results**

# LDI and MVD compression schemes

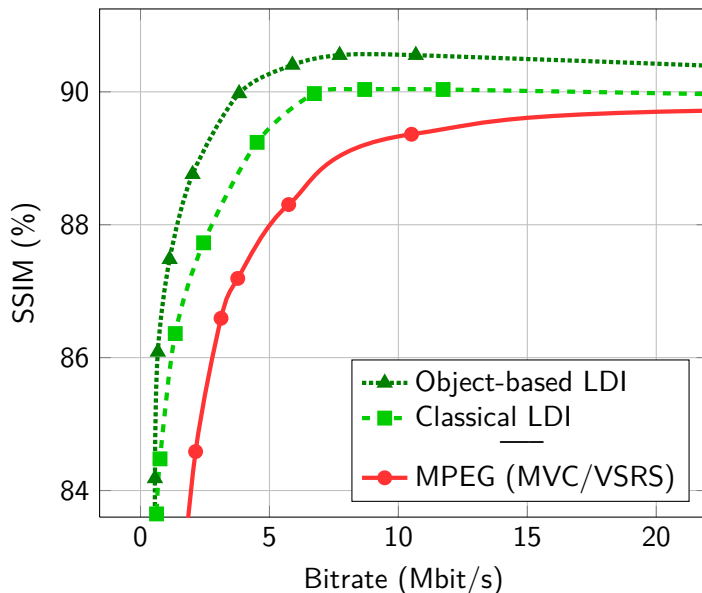
## MVD compression (MVC)



## LDI compression (MVC)



# Rate-distortion curve



# Conclusions on Object-Based LDI

## Advantages

- Remove unnecessary boundaries  $\Rightarrow$  Improve compression
- Static background along time
- Compatible with fast mesh-based rendering
- Depth continuity improves rendering quality

## Limit

- No backward compatibility with 2D decoding scheme

Questions?

- [CPT03] A. Criminisi, P. Pérez, and K. Toyama.  
Object removal by exemplar-based inpainting.  
In *Computer Vision and Pattern Recognition (CVPR), IEEE Computer Society Conference on*, volume 2, pages 721–728, June 2003.
- [JMG09] Vincent Jantet, Luce Morin, and Christine Guillemot.  
Incremental-Idi for multi-view coding.  
In *3DTV Conference: The True Vision - Capture, Transmission and Display of 3D Video*, pages 1–4, Potsdam, Germany, May 2009.
- [SGHS98] Jonathan Shade, Steven Gortler, Li-wei He, and Richard Szeliski.  
Layered depth images.  
In *SIGGRAPH '98: Proceedings of the 25th annual conference on Computer graphics and interactive techniques*, pages 231–242, New York, NY, USA, July 1998. ACM.