



**HAL**  
open science

# Methylphenidate normalises fronto-striatal underactivation during interference inhibition in medication-naive boys with Attention-Deficit Hyperactivity Disorder

Katya Rubia, Rozmin Halari, Ana Cubillo, Anna Smith, Abdul-Majeed Mohammad, Michael Brammer, Eric Taylor

## ► To cite this version:

Katya Rubia, Rozmin Halari, Ana Cubillo, Anna Smith, Abdul-Majeed Mohammad, et al.. Methylphenidate normalises fronto-striatal underactivation during interference inhibition in medication-naive boys with Attention-Deficit Hyperactivity Disorder. *Neuropsychopharmacology*, 2011, 10.1038/npp.2011.30 . hal-00627924

**HAL Id: hal-00627924**

**<https://hal.science/hal-00627924>**

Submitted on 30 Sep 2011

**HAL** is a multi-disciplinary open access archive for the deposit and dissemination of scientific research documents, whether they are published or not. The documents may come from teaching and research institutions in France or abroad, or from public or private research centers.

L'archive ouverte pluridisciplinaire **HAL**, est destinée au dépôt et à la diffusion de documents scientifiques de niveau recherche, publiés ou non, émanant des établissements d'enseignement et de recherche français ou étrangers, des laboratoires publics ou privés.

NPP-10-0946R.

Abstract: 250

Introduction: 750

Methods: 1507

Tables: 3

Figures: 3, 1 Supplementary Figure

Methylphenidate normalises fronto-striatal underactivation during interference inhibition in medication-naive boys with Attention-Deficit Hyperactivity Disorder

Katya Rubia, PhD, Rozmin Halari, PhD, Cubillo, A, Smith, A, PhD, Abdul-Majeed Mohammad, MD, Michael Brammer, PHD, Eric Taylor, MD

Departments of Child Psychiatry (Profs Rubia, Taylor, Drs Halari, Cubillo, Mohammad) and Neuroimaging (Prof Brammer), Institute of Psychiatry, King's College London, UK.

Correspondence to:

Prof Katya Rubia

Dep. Child Psychiatry, SGDP PO46

Institute of Psychiatry, King's College University London

De Crespigny Park, London SE5 8AF, UK.

Tel. 044-207-8480463

Fax : 0044-207-797580

[katya.rubia@kcl.ac.uk](mailto:katya.rubia@kcl.ac.uk)

## ABSTRACT

Youth with Attention Deficit Hyperactivity Disorder (ADHD) have deficits in interference inhibition, which can be improved with the indirect catecholamine agonist Methylphenidate (MPH). Functional magnetic resonance imaging (fMRI) was used to investigate the effects of a single dose of MPH on brain activation during interference inhibition in medication-naïve ADHD boys.

Medication-naïve boys with ADHD were scanned twice, in a randomised, double-blind design, under either a single clinical dose of MPH or Placebo, while performing a Simon task that measures interference inhibition and controls for the oddball effect of low frequency appearance of incongruent trials. Brain activation was compared within patients under either drug condition. To test for potential normalisation effects of MPH, brain activation in ADHD patients under either drug condition was compared to that of healthy age-matched comparison boys.

During incongruent trials compared to congruent oddball trials, boys with ADHD under placebo relative to controls showed reduced brain activation in typical areas of interference inhibition, including right inferior prefrontal cortex, left striatum and thalamus, mid-cingulate/Supplementary Motor Area and left superior temporal lobe. MPH relative to placebo upregulated brain activation in right inferior prefrontal and premotor cortices. Under the MPH condition, patients relative to controls no longer showed the reduced activation in right inferior prefrontal and striato-thalamic regions. Effect size comparison furthermore showed that these normalisation effects were significant.

MPH significantly normalised the fronto-striatal underfunctioning in ADHD patients relative to controls during interference inhibition, but did not affect medial frontal or temporal dysfunction. MPH therefore appears to have a region-specific upregulation effect on fronto-striatal activation.

Keywords: Attention Deficit Hyperactivity Disorder (ADHD); Methylphenidate; Stop task; performance monitoring; error processing; motor response inhibition.

## INTRODUCTION

Childhood Attention Deficit Hyperactivity Disorder (ADHD) is defined by age-inappropriate inattention, impulsiveness and hyperactivity (DSM IV) (American Psychiatric Association, 1994). ADHD has consistently been associated with neuropsychological deficits in tasks of motor and interference inhibition (Rubia, 2010; Rubia *et al*, 2007a; Willcutt *et al*, 2005). This has been underpinned by neuroimaging evidence for reduced activation of inhibition-associated inferior prefrontal and caudate regions (Konrad *et al*, 2006; Rubia *et al*, 2010a; Rubia *et al*, 2008; Rubia *et al*, 1999; Rubia *et al*, 2005), as well as more generic regions of cognitive control and attention in cingulate and parieto-temporal cortices during these and related tasks (Rubia *et al*, 2010a; Rubia *et al*, 2008; Rubia *et al*, 1999; Rubia *et al*, 2005; Vaidya *et al*, 2005). Psychostimulants, including Methylphenidate (MPH) and Amphetamines, are the most effective, first choice treatment for ADHD, improving symptoms in 70% of patients (Arnsten, 2006a; Wilens, 2008). MPH is a catecholamine reuptake inhibitor with stronger dopamine upregulating effects in striatal regions and both dopamine and noradrenaline upregulating effects in cortical areas (Arnsten, 2006a). There is consistent evidence that the behavioural and cognitive features of ADHD are mediated at least in part by catecholamine dysfunction, given that adults with ADHD have abnormal striatal dopamine (DA) transporter levels and reduced DA availability in the basal ganglia (Krause, 2008; Volkow *et al*, 2006; Volkow *et al*, 2007a; Volkow *et al*, 2007b). Relatively little, however, is known on the effects of MPH on brain function in ADHD. MPH has been shown to improve performance on motor and interference inhibition tasks (DeVito *et al*, 2009; Langleben *et al*, 2006; Tannock *et al*, 1989). Relatively few fMRI studies,

however, have investigated the acute effects of MPH on neural networks of inhibition functions. Vaidya et al., (1998) found that the single dose of MPH upregulated defined regions of interest of caudate, anterior cingulate and frontal brain regions in previously medicated children with ADHD during motor response inhibition. A recent study found no effect of a single dose MPH administration on the neural networks of interference inhibition in medication-responsive patients with ADHD, but on anterior and posterior cingulate activation during the control condition, which was interpreted as enhancement of the default mode network suppression (Peterson et al., 2009). A study in adults with ADHD testing for 6 weeks of chronic effects of MPH on brain activation during a Multisource-Interference inhibition task found an enhancement effect on anterior cingulate as well as dorsolateral prefrontal, striato-thalamic and parietal activation (Bush *et al*, 2008). All these studies were conducted in previously medicated patients with ADHD. Longitudinal studies, however, suggest that long-term medication may have an effect on both brain structure (Shaw *et al*, 2009) and function (Konrad *et al*, 2007).

To overcome these limitations, we aimed to investigate the effect of MPH on neural processes of interference inhibition in medication-naïve boys with ADHD. Imaging studies of interference inhibition tasks are typically confounded by the mismatch in frequency between low frequent interference inhibition and high frequent congruent trials, co-measuring the attentional oddball effect to less frequent trials. To avoid this confound we used our fMRI paradigm of the Simon task that incorporates an oddball task to control for the attention allocation effect (Rubia *et al*, 2010b; Smith *et al*, 2006). In healthy adolescents, task performance activates bilateral dorsolateral and inferior prefrontal, basal ganglia, thalamus, anterior cingulate and temporal brain regions (Christakou *et al*, 2009a; Rubia *et al*, 2006). Children with ADHD relative to

controls have shown reduced activation in fronto-striatal, medial frontal/anterior cingulate and temporo-parietal regions during this (Rubia *et al*, 2010b; Rubia *et al*, 2009c) and similar interference inhibition tasks (Konrad *et al*, 2006; Vaidya *et al*, 2005).

We hence conducted a randomised, double-blind, placebo-controlled pharmacological fMRI experiment to test for the effects of a single acute clinical dose of MPH on brain activation in 12 medication-naïve boys with ADHD during interference inhibition. Furthermore, brain activation in ADHD patients at baseline and after MPH was compared with that of a healthy age matched control group, to test for potential amelioration or normalisation effects of MPH on brain dysfunctions during the placebo condition. During tasks of sustained attention and time estimation, we previously observed normalisation of fronto-striatal and parietal brain activation in medication-naïve patients with ADHD (Rubia *et al*, 2009a; Rubia *et al*, 2009b). We therefore hypothesised that during interference inhibition, MPH would up-regulate and normalise areas of underactivation that are typically observed in ADHD patients relative to controls during this task in inferior and medial frontal/anterior cingulate and striatal brain regions.

## METHODS

### Subjects

Twelve male medication-naïve, right-handed boys aged 10-15 years who met clinical diagnostic criteria for the combined (inattentive-hyperactive) subtype of ADHD (DSM-IV), with a mean age of 13 years (SD = 1), were recruited through clinics. One additional patient was recruited but not included in the study due to

movement artefacts and non-completion of the second scan. Clinical diagnosis of ADHD was established through interviews with an experienced child psychiatrist (A-M.M.) using the standardized Maudsley diagnostic interview to check the presence or absence of each of the criteria and applying the numerical cut-offs for numbers of symptoms in each domain as set out by DSM-IV (Goldberg and Murray, 2002). The Maudsley diagnostic interview contains items on symptoms of ADHD, autism, conduct, bipolar, affective and anxiety and other pervasive developmental disorders. Items were then combined into diagnoses following the rules of the ICD-10 (Research Diagnostic Criteria); except that for ADHD the criteria of the DSM-IV (TR) were followed. Exclusion criteria were lifetime co-morbidity with any other psychiatric disorder, except for conduct/oppositional defiant disorder (present in one patient), as well as learning disability and specific reading disorder (as assessed by the full developmental and educational history of the child, taken from parent/carer, by school information and by excluding subjects with a Raven's IQ lower than the 5<sup>th</sup> percentile), neurological abnormalities, epilepsy, drug or substance abuse and previous exposure to stimulant medication. Patients with ADHD had to also score above cut-off for hyperactive/inattentive symptoms on the Strengths and Difficulties Questionnaire for parents (SDQ) (Goodman and Scott, 1999). Patients were scanned twice, in a randomised, counterbalanced fashion, one week apart, 1 hr after either 0.3mg/kg of MPH administration or placebo (Vitamin C, 100mg).

Thirteen male right-handed boys in the age range of 11 to 16 years (mean age = 13, SD = 1) were recruited through advertisements in the same geographic areas of South London to ensure similar socioeconomic status. They scored below the cut-off for behavioural problems in the SDQ, and had no history of psychiatric disorder.



All participants were above the 5<sup>th</sup> percentile on the Raven progressive matrices performance IQ (Raven, 1960) (IQ mean estimate Controls = 102, SD = 15, ADHD = 90, SD = 9) and paid £30 for participation. Parental and child informed consent/assent and approval from the local Ethical Committee was obtained.

Univariate ANOVAs showed no group differences between boys with ADHD and controls for age ( $F(1, 25) = 1.7, p = .2$ ) but there was a significant difference in IQ ( $F(1, 25) = 5.5, p < .023$ ). Consequently, all between-group performance and imaging data analyses were covaried for IQ.

fMRI paradigm: Simon task

Subjects practised the Simon task once prior to scanning. The 6 min fMRI adaptation of the Simon task involves a stimulus-response incompatibility effect and measures interference inhibition and selective attention. To control for the attentional oddball effect of low frequency appearance of incongruent trials, the task contains an oddball condition (Rubia *et al*, 2010b; Rubia *et al*, 2009c; Rubia *et al*, 2006; Smith *et al*, 2006).

Subjects have to press a left/right button depending on whether an arrow stimulus of 300ms duration points either to the left or right side of the screen. The mean ITI was 1.8s, but jittered between 1.6 and 2s for optimal statistical efficiency of fast event-related fMRI data analysis (Dale, 1999). In congruent trials (160 trials), the arrow pointing left (right) appears on the left (right) side of the screen. In 12% of trials (24 trials), arrows appear on the opposite side of where they point and subjects have to inhibit responding according to the interfering, predominant spatial information while continue to respond to the iconic information (arrow direction). To control for the attentional oddball effect of the low frequency appearance of the

incongruent trials, slightly slanted “oddball” but congruent stimuli appeared in another 12% of trials (24 trials), to which subjects have to respond to as to the congruent stimuli.

The event related analysis compares successfully performed incongruent with successfully performed oddball trials to measure the neural correlates of interference inhibition, controlling for the attentional oddball effect (incongruent-oddball trials).

#### fMRI image acquisition

Gradient-echo echoplanar MR imaging (EPI) data were acquired on a GE Signa 1.5T Horizon LX System (General; Electric, Milwaukee, WI, USA) at the Maudsley Hospital, London. A quadrature birdcage head coil was used for RF transmission and reception. In each of 16 non-contiguous planes parallel to the anterior-posterior commissural, 208  $T_2^*$ -weighted MR images depicting BOLD (Blood Oxygen Level Dependent) contrast covering the whole brain were acquired with TE = 40ms, TR = 1.8s, flip angle =  $90^\circ$ , in-plane resolution = 3.1mm, slice thickness = 7mm, slice-skip = 0.7mm, providing complete brain coverage.

#### fMRI image analysis

The method of fMRI analysis used (XBAM, <http://www.brainmap.co.uk>) (Brammer *et al*, 1997) makes no normality assumptions, which are usually violated in fMRI data, but instead uses median statistics to control outlier effects and permutation rather than normal theory based inference. Furthermore the most common test statistic is computed by standardising for individual difference in residual noise before embarking on second level, multi-subject testing using robust permutation-based

methods. This allows a mixed effects approach to analysis – an approach that has recently been recommended following a detailed analysis of the validity and impact of normal theory based inference in fMRI in large number of subjects (Thirion *et al*, 2007).

### Individual analyses

fMRI data were realigned to minimise motion-related artefacts (Bullmore *et al*, 1999) and smoothed using a Gaussian filter (full-width half maximum, 7.2mm). Time-series analysis of individual subject activation was performed using XBAM, with a wavelet-based re-sampling method previously described (Bullmore *et al*, 2001). Briefly, we first convolved each experimental condition with two Poisson model functions (delays of 4 and 8 s). Only correct trials were included in the analyses (i.e. correct incongruent/Simon and correct oddball trials, both contrasted with an implicit baseline, i.e. congruent trials). We then calculated the weighted sum of these two convolutions that gave the best fit (least-squares) to the time series at each voxel.

A goodness-of-fit statistic (the SSQ-ratio) was then computed at each voxel consisting of the ratio of the sum of squares of deviations from the mean intensity value due to the model (fitted time series) divided by the sum of squares due to the residuals (original time series minus model time series). The appropriate null distribution for assessing significance of any given SSQ-ratio was established using the wavelet-based data re-sampling method (Bullmore *et al*, 2001) and applying the model-fitting process to the re-sampled data. This process was repeated 20 times at each voxel and the data combined over all voxels, resulting in 20 null parametric maps of SSQ-ratio for each subject, which were combined to give the overall null distribution of SSQ-ratio. The same permutation strategy was applied at each voxel to preserve spatial

correlation structure in the data. Activated voxels, at a  $<1$  level of type I error, were identified through the appropriate critical value of the SSQ-ratio from the null distribution. Individual SSQ-ratio maps were then transformed into standard space, first by rigid body transformation of the fMRI data into a high-resolution inversion recovery image of the same subject, and then by affine transformation onto a Talairach template (Talairach and Tournoux, 1988)

### Group Analyses

A group activation map was then produced for the experimental condition of incongruent trials – oddball trials by calculating the median observed SSQ-ratio over all subjects at each voxel in standard space and testing them against the null distribution of median SSQ-ratios computed from the identically transformed wavelet re-sampled data (Brammer *et al*, 1997). The voxel-level threshold was first set to 0.05 to give maximum sensitivity and to avoid type II errors. Next, a cluster-level threshold was computed for the resulting 3D voxel clusters such that the final expected number of type I error clusters was  $<1$  per whole brain. The necessary combination of voxel and cluster level thresholds was not assumed from theory but rather was determined by direct permutation for each data set, giving excellent Type II error control (Bullmore *et al*, 1999). Cluster mass rather than a cluster extent threshold was used, to minimise discrimination against possible small, strongly responding foci of activation (Bullmore *et al*, 1999). For the group activation analyses, less than one false positive activation locus was expected for  $p < 0.05$  at voxel level and  $p < 0.05$  at cluster level.

## Within and between group comparisons

For the within-group comparisons of the effect of MPH versus Placebo on brain activation, one-way repeated measures ANOVA analyses were conducted using randomisation-based tests for voxel or cluster-wise differences as described in detail (Brammer *et al*, 1997; Bullmore *et al*, 2001). This was done for each of the two contrast conditions. Less than 1 false activated cluster was expected at  $p < 0.05$  for voxel- and  $p < 0.01$  for cluster comparisons for these tests.

To test for hypothesised amelioration/normalisation effects of MPH on brain activation compared to healthy controls, two ANCOVAs with IQ estimate as covariate were conducted: 1) between controls and boys with ADHD under the placebo condition and 2) between controls and boys with ADHD under the MPH condition. Less than 1 false activated cluster was expected at  $p < 0.05$  for voxel- and  $p < 0.01$  for cluster comparisons.

## RESULTS

### Performance data

#### *Within patient comparison between MPH and placebo*

Repeated measures ANOVAs within ADHD patients showed no significant difference between placebo or medication on overall reaction times (RT) ( $df = 1,11$ ;  $F = 1$ ,  $p < .3$ ), overall error rates ( $df = 1,11$ ;  $F = .001$ ,  $p < .9$ ) or on the difference in reaction time between incongruent and congruent trials (Simon RT effect) ( $df = 1,11$ ;  $F = .05$ ,  $p < .8$ ) or the Simon accuracy effect (differences in accuracy between incongruent and congruent trials) ( $df = 1,11$ ;  $F = .2$ ,  $p < .7$ ).

#### *Comparison between ADHD patients under placebo compared to controls*

Univariate ANCOVAs showed that ADHD patients under placebo were slower than controls in reaction times ( $df = 1,24$ ;  $F = 7$ ,  $p < 0.017$ ), but did not differ in errors ( $df = 1,24$ ;  $F = .8$ ,  $p < .4$ ). Repeated measures ANCOVA for the Simon RT time and Simon accuracy effect showed that there was no overall Simon effect for reaction times ( $df = 1,22$ ;  $F = .6$ ,  $p = .4$ ) and a trend-level significance for a Simon accuracy effect, which was due to larger error numbers in the incongruent compared to congruent trials ( $df = 1,22$ ;  $F = 2$ ,  $p < 0.1$ ). However, no significant interaction was observed between group and Simon RT effect ( $df = 1,22$ ;  $F = .2$ ,  $p = .7$ ) or between group and Simon accuracy effect ( $df = 1,22$ ;  $F = 2$ ,  $p = .2$ ).

#### *Comparison between ADHD patients under MPH compared to controls*

Univariate ANCOVAs showed that ADHD patients under MPH were still slower than controls in RT ( $df = 1,24$ ;  $F = 5$ ,  $p < 0.035$ ), but did not differ in errors ( $df = 1,24$ ;  $F = 1$ ,  $p < .2$ ). Repeated measures ANOVA for the Simon RT and Simon accuracy effect showed that there was no overall Simon effect for RT ( $df = 1,22$ ;  $F = .8$ ,  $p = .4$ ) but a significant Simon accuracy effect, due to larger error numbers in the incongruent compared to congruent trials ( $F = 2$ ,  $p < 0.42$ ). However, no significant interaction was observed between group and Simon reaction time effect (RT:  $df = 1,22$ ;  $F = .4$ ,  $p = .5$ ) or between group and Simon accuracy effect (RT:  $df = 1,22$ ;  $F = 2$ ,  $p = .2$ ).

## Brain activation

### Movement

There were no significant differences in the extent of 3-dimensional motion parameters between controls and ADHD boys under placebo for x,y,z rotation (df = 3,21;  $F = 2$ ,  $p < .14$ ) or x,y,z translation (df = 3,21;  $F = 1.3$ ,  $p < .3$ ) nor between controls and ADHD boys under MPH in x,y,z rotation (df = 3,21;  $F = 1.7$ ,  $p < .2$ ) or x,y,z translation (df = 3,21;  $F = 2$ ,  $p < .15$ ). Nor were there any differences in motion parameters for the drug comparison within patients for x,y,z rotation (df = 3,20;  $F = .3$ ,  $p < .8$ ) or x,y,z translation (df = 3,20;  $F = 1$ ,  $p < .4$ ).

One subject was excluded due to high head movement of over 2mm in the x,y, and z rotation and translation (see methods).

### *Within-group brain activations*

Controls activated relatively large clusters in right inferior prefrontal cortex, reaching deep into insula, basal ganglia, and thalamus, in left insula, basal ganglia and thalamus, in left and right dorsolateral prefrontal cortex, medial frontal cortex, including anterior cingulate and supplementary motor area (SMA), in left and right inferior parietal lobes and in right superior temporal lobe.

Activation in ADHD patients under placebo was in right inferior prefrontal cortex, reaching into insula, caudate and putamen, in left inferior prefrontal gyrus, in ventromedial frontal cortex, including anterior cingulate and SMA, in thalamus, bilateral inferior parietal lobe and in left middle temporal gyrus.

Activation in ADHD patients under MPH was in right inferior prefrontal cortex, reaching into insula, caudate and putamen and in medial frontal cortex, including anterior cingulate and SMA (see Supplementary Figure 1).

*ANOVA within-patient comparisons in brain activation between the placebo and the MPH conditions*

MPH contrasted with placebo elicited enhanced activation in two large clusters; one comprised right inferior prefrontal and premotor cortex reaching into superior temporal and inferior parietal lobes. The other cluster comprised left cerebellum and middle and inferior temporal lobes (see Table 2, Figure 1). The placebo condition elicited no enhanced activation over MPH.

*Comparison between controls and ADHD patients under either placebo or MPH*

Relative to controls, ADHD patients under the placebo condition showed underactivation in right inferior prefrontal cortex reaching into inferior parietal lobe, in left ventromedial frontal cortex, the basal ganglia, and thalamus, in a large cluster comprising right SMA, anterior and posterior cingulate gyri and in left superior and middle temporal/occipital cortex (Table 3, Figure 2).

Under the MPH condition, ADHD patients showed reduced activation in the same clusters with exception of two previous difference clusters of activation, the one in the left ventromedial frontal cortex, basal ganglia and thalamus and the other one in right inferior prefrontal cortex. Between-group differences in these two clusters were no longer observed (Fig 2, Table 3).



In order to establish whether the group differences between control boys and ADHD boys under the two drug comparisons in the inferior frontal and basal ganglia clusters were significantly different, we directly compared the effect sizes of the group differences in activation resulting from the two comparisons (Controls compared to ADHD under placebo; and controls compared to ADHD under MPH) (Mathews & Altman 1996). When comparing two effect sizes, the z-test can evaluate the likelihood of whether they are significantly different. The difference between the two effect sizes (es) can be considered a normalized variable, where the standard error of the difference (se) is a combination of the standard errors of the two comparisons. Based upon this, the probability of a Type I error can be calculated using the following formula:  $p(\alpha) = (es_1 - es_2) / \sqrt{se_1^2 + se_2^2}$  (Mathews & Altman 1996).

The effect size comparison showed that effect sizes for the group differences in the inferior prefrontal activation cluster for the two comparisons were significantly different (Statistical power of BOLD response: Control: 0.0142; ADHD placebo: - 0.0153; ADHD MPH: 0.087;  $z = -1.6$ ;  $p < 0.05$ ) as were the effect sizes for the group differences for the two comparisons in the basal ganglia activation cluster (Statistical power of BOLD response: Control 0.0042; ADHD placebo: - 0.0236; ADHD MPH 0.024;  $z = 0.5$ ;  $p < 0.04$ ).

Given that the brain activation differences were based on the higher-level contrast between Simon-Oddball conditions, we elucidated further these activation differences by extracting BOLD responses in these between-group difference clusters for the contrast of Simon-Oddball condition as well as for the lower level contrasts of Simon-Congruent and Oddball-Congruent trials in both groups. As can be observed in Figure 3a) for the ANCOVA difference clusters for the comparison between control boys and ADHD boys under placebo, the group differences in all clusters were arisen

because control boys recruited these brain regions to a greater extent for the Simon-Congruent condition than for the Oddball-Congruent condition, while in patients with ADHD these brain regions were more activated in the Oddball-Congruent condition than in the Simon-Congruent condition. In other words, in healthy boys these brain regions shifted towards greater activation from the Oddball to the Simon condition, while in ADHD patients these brain regions showed a greater response during the Oddball condition than the Simon condition.

For the comparison between control boys and ADHD patients under Methylphenidate the same patterns were observed for the 3 brain clusters that remained different between groups. In all 3 activation clusters, brain activation for the Simon-Congruent condition was higher in controls than for Oddball-Congruent condition, while ADHD patients showed a more pronounced activation in these regions during the Oddball-Congruent condition than for the Simon-Congruent condition (see Figure 3b).

In addition, we wanted to test whether the intensity of the brain under-activation in ADHD patients relative to controls during the placebo condition was associated with symptom severity. For this purpose, statistical measures of BOLD response for each ADHD participant was extracted in each of the significant clusters of between-group activation differences during the placebo condition and then correlated with inattentive-hyperactive symptoms on the SDQ. We observed a negative correlation within the ADHD group between the activation in the cluster in the basal ganglia and inattentive-hyperactive symptoms on the SDQ ( $r = -.7$ ;  $p < .016$ , two-tailed). No other correlations were observed.

## DISCUSSION

ADHD patients did not significantly differ from controls in task performance. MPH relative to placebo had no significant ameliorating effect on task performance within patients or on the differences relative to healthy controls. Nevertheless, MPH relative to placebo had significant upregulation and normalisation effects on brain activation. MPH elicited enhanced activation within ADHD patients in right inferior prefrontal and premotor cortices as well as in left cerebellum and inferior and middle temporal lobes. When patients under placebo were compared to controls, they showed reduced activation in right inferior prefrontal cortex reaching into inferior parietal lobe, in left basal ganglia and thalamus, in ventromedial and dorsomedial prefrontal and in temporal regions. The underactivation in basal ganglia, thalamus and ventromedial frontal lobe, furthermore, was negatively associated with symptom severity. No brain regions were increased in activation in patients relative to controls. All activation deficit clusters relative to controls remained when patients were under MPH with the exception of the under-activation clusters in right inferior prefrontal cortex, and the symptom-severity associated cluster in left basal ganglia/thalamus and ventromedial prefrontal cortex. Furthermore, the region-specific normalisation effects were significant, given that the effect sizes of the activation differences in these two activation clusters were significantly larger for the comparison between controls and ADHD under placebo than for the comparison between controls and ADHD under MPH. The findings suggest that a single clinical dose of MPH has region-specific normalisation effects on abnormal brain activation in ADHD patients in inferior and ventromedial fronto-striatal networks during interference inhibition.

Right inferior prefrontal cortex as well as the caudate and thalamus form part of a fronto-striatal network of motor and interference inhibition in adults and children (Aron and Poldrack, 2006; Li, 2008 #2694; Christakou *et al*, 2009a; Rubia, 2007; Rubia *et al*, 2003; Rubia *et al*, 2006). Furthermore, the underactivation in these brain regions for ADHD patients was specific to the interference condition, since the group differences in these regions seemed to arise from the fact that control boys showed more activation in these areas for the Simon condition while ADHD patients showed more activation in these regions during the Oddball condition. Inferior prefrontal underactivation in the context of tasks of cognitive control is one of the most consistent findings in fMRI studies in patients with ADHD (Dickstein *et al*, 2006; Durston *et al*, 2003; Konrad *et al*, 2006; Rubia *et al*, 1999; Rubia *et al*, 2005; Vaidya *et al*, 1998; Vaidya *et al*, 2005), for review see (Rubia, 2011). Inferior prefrontal cortex, as well as caudate and thalamus have furthermore been found to be dysfunctional in ADHD children during other, more generic attention functions such as performance monitoring (Pliszka *et al*, 2006; Rubia *et al*, 2010a), selective, sustained and flexible attention tasks (Rubia *et al*, 2010a; Rubia *et al*, 2010b; Rubia *et al*, 2009b; Rubia *et al*, 2009c; Rubia *et al*, 2009d; Rubia *et al*, 2007b; Smith *et al*, 2006). Inferior prefrontal dysfunction, furthermore, appears to be a disorder-specific neurofunctional deficit compared to patients with conduct (Rubia *et al*, 2010c; Rubia *et al*, 2009c; Rubia *et al*, 2008; Rubia *et al*, 2009d) and obsessive compulsive disorder (Rubia *et al*, 2010a), while striatal underactivation appears to be disorder-specific relative to OCD patients (Rubia *et al*, 2010a; Rubia *et al*, 2010b), for review see (Rubia, 2011). In these data, furthermore, the activation in the basal ganglia cluster correlated with symptom severity, so that the ADHD patients with more severe inattention and hyperactivity symptoms had more reduced activation. MPH therefore

appears to modulate an important neuro-functional biomarker of ADHD, a dysfunction in fronto-striatal neural networks that mediate cognitive control.

The findings of upregulation of activation in inferior prefrontal cortex and the basal ganglia under a single dose of MPH extend previous findings of upregulation of these brain regions in the context of other tasks. Thus, lateral prefrontal and caudate activation has previously been shown to be upregulated, but not normalised in ADHD patients with a single clinical dose of MPH during tasks of motor response inhibition (Vaidya *et al*, 1998). Furthermore, our findings of a significant specific normalisation effect on the activation in left basal ganglia but not in temporal lobes is in line with the study of Shafritz who also found a region-specific upregulation and normalisation effect of MPH on left striatal underactivation but not on the underactivation of middle temporal lobe (Shafritz *et al*, 2004). The finding of upregulation and normalisation of right inferior prefrontal/premotor cortex with MPH is in line with strikingly similar findings of upregulation and normalisation of underfunctioning relative to controls in this region in the same subjects with the same clinical dose of MPH during a sustained attention task (Rubia *et al*, 2009b). The upregulation effects in right prefrontal, premotor and left thalamic brain regions under a single dose of MPH is also in line with evidence for longer-term, chronic upregulation effects. Chronic doses of MPH over 6 weeks lead to a significant upregulation of these areas in adults with ADHD during a different interference inhibition task (Bush *et al*, 2008). The findings of upregulation of fronto-striatal brain activation during interference inhibition in ADHD boys in this study, however, are not in line with a recent study of Peterson who found that MPH had no effect on fronto-striatal activation during a Stroop interference inhibition task, but enhanced activation in the control condition of the

task in the ventral anterior cingulate and posterior cingulate, which was interpreted as suppression of default-mode activity (Peterson *et al*, 2009).

Also, in this study we did not observe a normalisation effect of MPH on the dysfunction in medial frontal activation. Like in this study, the SMA and anterior cingulate have previously been found to be underactivated in ADHD patients during interference inhibition tasks (Bush *et al*, 1999; Rubia *et al*, 2010b). Previous studies, however, unlike this one, found a modulation of either chronic (Bush *et al*, 2008) or single doses of MPH (Vaidya *et al*, 1998) on this structure during motor and interference inhibition, or on the control condition of the task (Peterson *et al*, 2009). Differences in findings may be due to the differences in task design or differences in medication history, as patients were not medication-naïve in these previous studies.

We observed, however, normalisation in a more ventromedial frontal location. Upregulation and normalisation of abnormal activation in this region has been observed in the same patient group during a time discrimination task (Rubia *et al*, 2009a). Ventromedial frontal cortex is thought to be important for holding information in representational memory (Schoenbaum *et al.*, 2006) and has been associated with selective attention and decision making (Christakou *et al.*, 2009b).

Posterior thalamic underactivation clusters in patients relative to controls under placebo were also upregulated and normalised with MPH. Posterior thalamic brain regions have been associated both with inhibitory control (Aron *et al*, 2006; Li *et al*, 2008), as well as attention to salient stimuli such as oddball, novel or incongruent targets (Rubia *et al*, 2009b; Rubia *et al*, 2009c; Rubia *et al*, 2007b; Stevens *et al*, 2007; Tamm *et al*, 2006). The significant normalisation effects in inferior and ventromedial frontal, striatal and thalamic brain regions therefore suggest that MPH appears to normalise activation of all parts of a fronto-striato-thalamic

cognitive control network (Rubia *et al.*, 2007b). Furthermore, this network cluster was significantly associated with symptom severity in ADHD patients. This suggests that MPH had a normalisation effect on brain deficits that are associated with symptom severity, which may be the mechanism of action that underlies behavioural improvement.

The inferior frontal underactivation cluster that was normalised with the single MPH dose in patients furthermore reached into inferior parietal lobe in more superior slices. To our knowledge, normalisation of inferior parietal activation with MPH has only recently been observed in ADHD patients, in the context of sustained attention (Rubia *et al.*, 2009b) and another interference inhibition task (Bush *et al.*, 2008).

MPH prevents the reuptake of catecholamines from the synaptic cleft by blocking dopamine and norepinephrine transporters (DAT/NET) (Volkow *et al.*, 1995; Volkow *et al.*, 1997). In vitro studies in animals show that methylphenidate has high affinity for the dopamine transporter (DAT), lower affinity for the norepinephrine transporter (NET) and minimum affinity for the serotonin transporter (SERT) (Bymaster *et al.*, 2002; Gatley *et al.*, 1996). In human kidney cells, MPH has shown to have greater affinity for NET than DAT (Eshleman *et al.*, 1999). Positron emission tomography (PET) studies show that MPH in healthy adults blocks 60-70% of striatal DAT in a dose-dependent manner and significantly increases levels of extracellular DA in the striatum (Schiffer *et al.*, 2006; Volkow *et al.*, 1997; Volkow *et al.*, 2002a; Volkow *et al.*, 2002b; Volkow *et al.*, 2007a), as well as in frontal, thalamic and temporal brain regions (Montgomery *et al.*, 2007). The upregulating effects on the caudate activation were therefore likely mediated by effects on the dopaminergic system. In frontal regions, however, studies in rats and mice have shown that MPH upregulates noradrenaline to the same or greater extent than dopamine (Balcioglu *et*

al., 2009; Berridge et al., 2006). This is thought to be mediated by reuptake inhibition of NET, since NET in frontal regions clear up both dopamine and noradrenaline, given that there are few DATs in these areas (Moron et al., 2002; Arnsten and Dudley, 2005; Arnsten, 2006b; Berridge *et al*, 2006; Bystander et al., 2002; Staller and Faraone, 2007). The effects of MPH on the inferior prefrontal activation could therefore have been associated with both dopamine and noradrenalin upregulation effects (Arnsten, 2006a). Likewise, the effect on thalamic upregulation may have been mediated by blockage of NETs, as these are densely distributed in the thalamus (Hannestad et al., 2010). Furthermore, a recent PET study showed that MPH at clinically relevant doses significantly occupies 70-80% of NETs in NET-rich regions, including cortical and thalamic areas, which is larger than the percentage of blockage that has previously been observed on DAT occupancy (Volkow et al., 1998). As opposed to the significantly high blockage of DAT in striatal regions, however, MPH had little effect on NET in the basal ganglia (Hannestad et al., 2010). The upregulating effects on frontal and thalamic activation, therefore, may have been mediated by enhanced dopamine and noradrenaline neurotransmission caused by NET blockage, while basal ganglia upregulation effects were more likely caused by DAT mediated effects on DA neurotransmission.

Patients compared to controls showed no performance deficits. Evidence for performance deficits in tasks of interference inhibition is controversial in the ADHD literature (Mullane *et al*, 2009; Rubia *et al*, 2007a; van Mourik *et al*, 2005). The negative findings may also be due to the relatively low statistical power for neuropsychological data and the use of an older adolescent age group compared to the childhood age groups previously shown to have performance deficits. The finding of no significant effects of the clinical dose of MPH on performance on the Simon task



is in line with previous negative findings of an effect of MPH on interference inhibition in the same Simon task (Rubia *et al*, 2007a; Smith *et al*, 2006) and in the related Stroop interference inhibition task (Solanto *et al*, 2009). The findings of brain dysfunctions in patients relative to controls and their upregulation and normalisation in boys with ADHD under the clinical dose of MPH despite no observable performance changes show that brain activation is more sensitive than performance to detect both abnormalities and pharmacological effects. We have previously shown that adolescents with ADHD show marked brain dysfunctions despite no task impairment in this and similar inhibition tasks (Rubia *et al*, 2009c; Rubia *et al*, 1999; Rubia *et al*, 2005) and brain activation has consistently been shown to be more sensitive than behaviour to show pharmacological effects of MPH in ADHD patients (Bush *et al*, 2008; Konrad *et al*, 2006; Peterson *et al*, 2009; Rubia *et al*, 2009a; Rubia *et al*, 2009b; Shafritz *et al*, 2004).

A limitation of the study is the relatively small sample size. Minimum numbers of 15-20 participants have been suggested for fMRI studies (Thirion *et al*., 2009, Carter *et al*., 2008). Repeated measures designs, however, are statistically more powerful than independent datasets which makes the within-subject ANOVA more robust. It cannot be excluded, however, that with larger sample sizes upregulation or normalisation effects of MPH could be found for other brain regions. The findings of region-specific normalisation effects of MPH on the activation in inferior frontal lobes and the basal ganglia, therefore, need to be considered with caution until replicated in larger datasets.

Another limitation of the study is that patients were tested twice, while controls were only scanned once, for ethical and financial reasons. Practice effects, however, were overcome by the counterbalanced design.

Also, this experimental study investigated the effects of one single clinical dose of MPH on brain activation in medication-naive boys with ADHD. Effects of a single acute dose of MPH are not comparable to long-term MPH treatment effects, where medication is typically titrated and given over longer periods of time. Studies of acute dosage only provide a unique probe of brief changes in catecholamine modulation that can provide insights into the effects of these brief changes on underlying brain function. The findings of this study can therefore not be transferred to elucidate underlying mechanisms of long-term clinical treatment and are hence limited in their applicability to clinical reality.

Furthermore, only male youth were included in the study to increase sample homogeneity. ADHD is more prevalent in boys (Merikangas et al., 2010) and gender differences exist in clinical manifestation, cognitive deficits and brain dysfunctions (Gershon, 2002; Mahone & Wodka, 2008; Valera *et al*, 2010). The findings may therefore not generalise to the female youth population.

The task design did not include an absolute rest condition, so that the active task condition (Simon condition) was contrasted with lower level baseline conditions (i.e. oddball; congruent trials). We found that the activation differences were due to stronger activation in controls relative to ADHD patients during the active task (incongruent trials) relative to the lower level baseline conditions. The contrast of the active task condition with an absolute baseline, such as a rest condition, could have provided additional information that might have further clarified the interaction findings. ADHD children, however, are known to differ from controls in their brain activation during the resting state (Konrad & Eickhoff, 2010) and a resting condition may therefore not necessarily be more disambiguating than a lower level baseline condition.

In conclusion, to our knowledge, this is the first study to show that a single clinical dose of MPH in medication-naïve youth with ADHD has a region-specific effect of significantly normalising symptom-associated fronto-striatal underfunctioning during interference inhibition.

#### DISCLOSURES

K.R. has received funding from Eli Lilly for another research project and speakers honoraria from Eli Lilly and Medice. None of the other authors has any conflict of interest to declare.

#### ACKNOWLEDGEMENTS

This research was funded by grants from the Wellcome Trust, UK to K.R. (053272/Z/98/Z/JRS/JP/JAT) and the Medical Research Council (G9900839), UK to E.T. R.H. was supported by a grant from the PPP Healthcare UK to K.R. (1206/1140).

## REFERENCES

- American Psychiatric Association (1994). *Diagnostic and Statistical Manual of Mental Disorders.*, 4th edn.: Washington, DC.
- Arnsten AF (2006a). Fundamentals of attention-deficit/hyperactivity disorder: circuits and pathways. *J Clin Psychiatry* 67 Suppl 8: 7-12.
- Arnsten AF, Dudley AG (2005). Methylphenidate improves prefrontal cortical cognitive function through alpha2 adrenoceptor and dopamine D1 receptor actions: Relevance to therapeutic effects in Attention Deficit Hyperactivity Disorder. *Behav Brain Funct* 1(1): 2.
- Arnsten AFT (2006b). Stimulants: Therapeutic actions in ADHD. *Neuropsychopharmacology* 31(11): 2376-2383.
- Aron AR, Poldrack RA (2006). Cortical and subcortical contributions to stop signal response inhibition: Role of the subthalamic nucleus. *Journal of Neuroscience* 26(9): 2424-2433.
- Balcioglu A, Ren JQ, McCarthy D, Spencer TJ, Biederman J, Bhide PG (2009). Plasma and brain concentrations of oral therapeutic doses of methylphenidate and their impact on brain monoamine content in mice. *Neuropharmacology* 57(7-8): 687-693.
- Berridge CW, Devilbiss DM, Andrzejewski ME, Arnsten AF, Kelley AE, Schmeichel B, *et al* (2006). Methylphenidate preferentially increases catecholamine neurotransmission within the prefrontal cortex at low doses that enhance cognitive function. *Biol Psychiatry* 60(10): 1111-1120.

- Brammer MJ, Bullmore ET, Simmons A, Williams SC, Grasby PM, Howard RJ, *et al* (1997). Generic brain activation mapping in functional magnetic resonance imaging: a nonparametric approach. *Magnetic Resonance Imaging* 15(7): 763-770.
- Bullmore E, Long C, Suckling J, Fadili J, Calvert G, Zelaya F, *et al* (2001). Colored noise and computational inference in neurophysiological (fMRI) time series analysis: resampling methods in time and wavelet domains. *Human Brain Mapping* 12(2): 61-78.
- Bullmore ET, Suckling J, Overmeyer S, Rabe-Hesketh S, Taylor E, Brammer MJ (1999). Global, voxel, and cluster tests, by theory and permutation, for a difference between two groups of structural MR images of the brain. *IEEE Transactions on Medical Imaging* 18(1): 32-42.
- Bush G, Frazier JA, Rauch SL, Seidman LJ, Whalen PJ, Jenike MA, *et al* (1999). Anterior cingulate cortex dysfunction in attention-deficit/hyperactivity disorder revealed by fMRI and the Counting Stroop. *Biological Psychiatry* 45(12): 1542-1552.
- Bush G, Spencer TJ, Holmes J, Shin LM, Valera EM, Seidman LJ, *et al* (2008). Functional magnetic resonance imaging of methylphenidate and placebo in attention-deficit/hyperactivity disorder during the multi-source interference task. *Arch Gen Psychiatry* 65(1): 102-114.
- Bymaster FP, Katner JS, Nelson DL, Hemrick-Luecke SK, Threlkeld PG, Heiligenstein JH, *et al* (2002). Atomoxetine increases extracellular levels of norepinephrine and dopamine in prefrontal cortex of rat: a potential mechanism for efficacy in attention deficit/hyperactivity disorder. *Neuropsychopharmacology* 27(5): 699-711.

- Christakou A, Halari R, Smith AB, Ifkovits E, Brammer M, Rubia K (2009a). Sex-dependent age modulation of frontostriatal and temporo-parietal activation during cognitive control. *Neuroimage* 48(1): 223-236.
- Christakou A, Brammer M, Giampietro V, Rubia K (2009b). Right Ventromedial and Dorsolateral Prefrontal Cortices Mediate Adaptive Decisions under Ambiguity by Integrating Choice Utility and Outcome Evaluation. *Journal of Neuroscience* 29(35): 11020-11028.
- Dale AM (1999). Optimal design for event-related fMRI. *Human Brain Mapping* 8: 109-114.
- DeVito EE, Blackwell AD, Clark L, Kent L, Dezsery AM, Turner DC, *et al* (2009). Methylphenidate improves response inhibition but not reflection-impulsivity in children with attention deficit hyperactivity disorder (ADHD). *Psychopharmacology* 202(1-3): 531-539.
- Dickstein SG, Bannon K, Castellanos FX, Milham MP (2006). The neural correlates of attention deficit hyperactivity disorder: an ALE meta-analysis. *Journal of Child Psychology and Psychiatry* 47(10): 1051-1062.
- Durston S, Tottenham NT, Thomas KM, Davidson MC, Eigsti IM, Yang YH, *et al* (2003). Differential patterns of striatal activation in young children with and without ADHD. *Biological Psychiatry* 53(10): 871-878.
- Eshleman AJ, Carmolli M, Cumbay M, Martens CR, Neve KA, Janowsky A (1999). Characteristics of drug interactions with recombinant biogenic amine transporters expressed in the same cell type. *Journal of Pharmacology and Experimental Therapeutics* 289(2): 877-885.

- Gatley SJ, Pan D, Chen R, Chaturvedi G, Ding YS (1996). Affinities of methylphenidate derivatives for dopamine, norepinephrine and serotonin transporters. *Life Sci* 58(12): 231-239.
- Gershon, J. (2002). A meta-analytic review of gender differences in ADHD. *J Atten Disord* 5(3): 143-54.
- Goldberg D, Murray R (2002). *Maudsley Handbook of Practical Psychiatry*.
- Goodman R, Scott S (1999). Comparing the strengths and difficulties questionnaire and the child behavior checklist: Is small beautiful? *Journal of Abnormal Child Psychology* 27(1): 17-24.
- Hannestad J, Gallezot JD, Planeta-Wilson B, Lin SF, Williams WA, van Dyck CH, *et al* (2010). Clinically Relevant Doses of Methylphenidate Significantly Occupy Norepinephrine Transporters in Humans In Vivo. *Biological Psychiatry* 68(9): 854-860.
- Konrad K, Eickhoff SB (2010). Is the ADHD Brain Wired Differently? A Review on Structural and Functional Connectivity in Attention Deficit Hyperactivity Disorder. *Human Brain Mapping* 31(6): 904-916.
- Konrad K, Neufang S, Fink GR, Herpertz-Dahlmann B (2007). Long-term effects of methylphenidate on neural networks associated with executive attention in children with ADHD: Results from a longitudinal functional MRI study. *Journal of the American Academy of Child and Adolescent Psychiatry* 46: 1633-1641.
- Konrad K, Neufang S, Hanisch C, Fink GR, Herpertz-Dahlmann B (2006). Dysfunctional attentional networks in children with attention deficit/hyperactivity disorder: Evidence from an event-related functional magnetic resonance imaging study. *Biological Psychiatry* 59(7): 643-651.

- Krause J (2008). SPECT and PET of the dopamine transporter in attention-deficit/hyperactivity disorder. *Expert Review of Neurotherapeutics* 8(4): 611-625.
- Langleben DD, Monterosso J, Elman I, Ash B, Krikorian G, Austin G (2006). Effect of methylphenidate on Stroop Color-Word task performance in children with attention deficit hyperactivity disorder. *Psychiatry Research* 141(3): 315-320.
- Li CSR, Yan P, Chao HHA, Sinha R, Paliwal P, Constable RT, *et al* (2008). Error-specific medial cortical and subcortical activity during the stop signal task: A functional magnetic resonance imaging study. *Neuroscience* 155(4): 1142-1151.
- Matthews, J.N.S., Altman, D.G. (1996) Statistics Notes: Interaction 2: compare effect sizes not P values. *British Medical Journal* 313: 808.
- Merikangas, K. R., He, J. P., Brody, D., Fisher, P. W., Bourdon, K., Koretz, D. S. (2010). Prevalence and treatment of mental disorders among US children in the 2001-2004 NHANES. *Pediatrics* 125(1): 75-81.
- Mahone, E. M., Wodka, E. L. (2008). The neurobiological profile of girls with ADHD. *Dev Disabil Res Rev* 14(4): 276-84.
- Montgomery AJ, Asselin MC, Farde L, Grasby PM (2007). Measurement of methylphenidate-induced change in extrastriatal dopamine concentration using [C-11]FLB 457 PET. *Journal of Cerebral Blood Flow and Metabolism* 27(2): 369-377.
- Moron JA, Brockington A, Wise RA, Rocha BA, Hope BT (2002): Dopamine uptake through the norepinephrine transporter in brain regions with low levels of the dopamine transporter: evidence from knock-out mouse lines. *J Neurosci* 22:389–395.



- Mullane JC, Corkum PV, Klein RM, McLaughlin E (2009). Interference control in children with and without ADHD: a systematic review of flanker and Simon task performance. *Child Neuropsychology* 15(4): 321-342.
- Peterson BS, Potenza MN, Wang ZS, Zhu HT, Martin A, Marsh R, *et al* (2009). An fMRI Study of the Effects of Psychostimulants on Default-Mode Processing During Stroop Task Performance in Youths With ADHD. *American Journal of Psychiatry* 166(11): 1286-1294.
- Pliszka SR, Glahn DC, Semrud-Clikeman M, Franklin C, Perez R, Xiong JJ (2006). Neuroimaging of inhibitory control areas in children with attention deficit hyperactivity disorder who were treatment naive or in long-term treatment. *American Journal of Psychiatry* 163(6): 1052-1060.
- Raven J (1960). *Guide to the Standard Progressive Matrices*. London HK Lewis: London.
- Rubia K (2007). Neuro-anatomic evidence for the maturational delay hypothesis of ADHD. *Proceedings of the National Academy of Sciences of the United States of America* 104(50): 19663-19664.
- Rubia K (2011). “Cool” inferior fronto-striatal dysfunction in Attention Deficit Hyperactivity Disorder (ADHD) versus “hot” ventromedial orbitofronto-limbic dysfunction in conduct disorder: a review *Biological Psychiatry* in press.
- Rubia K, Cubillo A, Smith AB, Woolley J, Heyman I, Brammer MJ (2010a). Disorder-specific dysfunction in right inferior prefrontal cortex during two inhibition tasks in boys with attention-deficit hyperactivity disorder compared to boys with obsessive-compulsive disorder. *Hum Brain Mapp* 31: 287-299.

- Rubia K, Cubillo A, Woolley J, Brammer MJ, Smith AB (2010b). Disorder-specific dysfunctions in patients with Attention-Deficit/Hyperactivity Disorder compared to patients with Obsessive-compulsive disorder during interference inhibition and attention allocation. *Human Brain Mapping, in press*. online publication: 2010c. DOI: 10.1002/hbm.21048.
- Rubia K, Halari R, Christakou A, Taylor E (2009a). Impulsiveness as a timing disturbance: neurocognitive abnormalities in attention-deficit hyperactivity disorder during temporal processes and normalization with methylphenidate. *Philos Trans R Soc Lond B Biol Sci* 364(1525): 1919-1931.
- Rubia K, Halari R, Cubillo A, Mohammad A, Scott S, Brammer M (2010c). Disorder-specific inferior frontal dysfunction in boys with pure Attention-Deficit/Hyperactivity Disorder compared to boys with pure CD during cognitive flexibility. *Hum Brain Mapp* 31 (12):1823–1833.
- Rubia K, Halari R, Cubillo A, Mohammad M, Taylor E (2009b). Methylphenidate normalises activation and functional connectivity deficits in attention and motivation networks in medication-naïve children with ADHD during a Rewarded Continuous Performance Task. *Neuropharmacology* 57 640-652.
- Rubia K, Halari R, Smith AB, Mohammad M, Scott S, Brammer MJ (2009c). Shared and disorder-specific prefrontal abnormalities in boys with pure attention-deficit/hyperactivity disorder compared to boys with pure CD during interference inhibition and attention allocation. *J Child Psychol Psychiatry* 50(6): 669-678.
- Rubia K, Halari R, Smith AB, Mohammed M, Scott S, Giampietro V, *et al* (2008). Dissociated functional brain abnormalities of inhibition in boys with pure conduct disorder and in boys with pure attention deficit hyperactivity disorder. *American Journal of Psychiatry* 165(7): 889-897.

- Rubia K, Overmeyer S, Taylor E, Brammer M, Williams SC, Simmons A, *et al* (1999). Hypofrontality in attention deficit hyperactivity disorder during higher-order motor control: a study with functional MRI. *American Journal of Psychiatry* 156(6): 891-896.
- Rubia K, Smith A, Brammer M, Taylor E (2007a). Performance of children with Attention Deficit Hyperactivity Disorder (ADHD) on a test battery for impulsiveness. *Child Neuropsychology* 30(2): 659-695.
- Rubia K, Smith A, Halari R, Matukura F, Mohammad M, Taylor E, *et al* (2009d). Disorder-specific dissociation of orbitofrontal dysfunction in boys with pure Conduct disorder during reward and ventrolateral prefrontal dysfunction in boys with pure Attention-Deficit/Hyperactivity Disorder during sustained attention. *American Journal of Psychiatry* 166: 83-94.
- Rubia K, Smith AB, Brammer MJ, Taylor E (2003). Right inferior prefrontal cortex mediates response inhibition while mesial prefrontal cortex is responsible for error detection. *Neuroimage* 20(1): 351-358.
- Rubia K, Smith AB, Brammer MJ, Taylor E (2007b). Temporal lobe dysfunction in medication-naive boys with attention-deficit/hyperactivity disorder during attention allocation and its relation to response variability. *Biological Psychiatry* 62(9): 999-1006.
- Rubia K, Smith AB, Brammer MJ, Toone B, Taylor E (2005). Abnormal brain activation during inhibition and error detection in medication-naive adolescents with ADHD. *American Journal of Psychiatry* 162(6): 1067-1075.
- Rubia K, Smith AB, Taylor E, Brammer M (2007b). Linear age-correlated functional development of right inferior fronto-striato-cerebellar networks during response

- inhibition and anterior Cingulate during error-related processes. *Human Brain Mapping* 28(11): 1163-1177.
- Rubia K, Smith AB, Woolley J, Nosarti C, Heyman I, Taylor E, *et al* (2006). Progressive increase of frontostriatal brain activation from childhood to adulthood during event-related tasks of cognitive control. *Human Brain Mapping* 27(12): 973-993.
- Schiffer WK, Volkow ND, Fowler JS, Alexoff DL, Logan J, Dewey SL (2006). Therapeutic doses of amphetamine or methylphenidate differentially increase synaptic and extracellular dopamine. *Synapse* 59(4): 243-251.
- Schoenbaum G, Roesch MR, Stalnaker TA (2006). Orbitofrontal cortex, decision-making and drug addiction. *Trends in Neurosciences* 29(2): 116-124.
- Shafritz KM, Marchione KE, Gore JC, Shaywitz SE, Shaywitz BA (2004). The effects of methylphenidate on neural systems of attention in attention deficit hyperactivity disorder. *American Journal of Psychiatry* 161(11): 1990-1997.
- Shaw P, Sharp WS, Morrison M, Eckstrand K, Greenstein DK, Clasen LS, *et al* (2009). Psychostimulant treatment and the developing cortex in attention deficit hyperactivity disorder. *Am J Psychiatry* 166(1): 58-63.
- Smith AB, Taylor E, Brammer M, Toone B, Rubia K (2006). Task-specific hypoactivation in prefrontal and temporoparietal brain regions during motor inhibition and task switching in medication-naive children and adolescents with attention deficit hyperactivity disorder. *American Journal of Psychiatry* 163(6): 1044-1051.
- Solanto M, Newcorn J, Vail L, Gilbert S, Ivanov I, Lara R (2009). Stimulant Drug Response in the Predominantly Inattentive and Combined Subtypes of Attention-

- Deficit/Hyperactivity Disorder. *Journal of Child and Adolescent Psychopharmacology* 19(6): 663-671.
- Staller JA, Faraone SV (2007). Targeting the dopamine system in the treatment of attention-deficit/hyperactivity disorder. *Expert Rev Neurother* 7(4): 351-362.
- Stevens MC, Pearlson GD, Kiehl KA (2007). An fMRI auditory oddball study of combined-subtype attention deficit hyperactivity disorder. *American Journal of Psychiatry* 164(11): 1737-1749.
- Talairach J, Tournoux P (1988). *Co-planar stereotaxic atlas of the brain* Thieme: New York.
- Tamm L, Menon V, Reiss AL (2006). Parietal attentional system aberrations during target detection in adolescents with attention deficit hyperactivity disorder: event-related fMRI evidence. *American Journal of Psychiatry* 163(6): 1033-1043.
- Tannock R, Schachar RJ, Carr RP, Chajczyk D, Logan GD (1989). Effects of methylphenidate on inhibitory control in hyperactive-children. *Journal of Abnormal Child Psychology* 17(5): 473-491.
- Thirion B, Pinel P, Meriaux S, Roche A, Dehaene S, Poline JB (2007). Analysis of a large fMRI cohort: Statistical and methodological issues for group analyses. *Neuroimage* 35(1): 105-120.
- Vaidya CJ, Austin G, Kirkorian G, Ridlehuber HW, Desmond JE, Glover GH, *et al* (1998). Selective effects of methylphenidate in attention deficit hyperactivity disorder: A functional magnetic resonance study. *Proceedings of the National Academy of Sciences of the United States of America* 95(24): 14494-14499.
- Vaidya CJ, Bunge SA, Dudukovic NM, Zalecki CA (2005). Altered neural substrates of cognitive control in childhood ADHD: Evidence from functional magnetic resonance imaging. *American Journal of Psychiatry* 162(9): 1605-1613.

- Valera, E. M., Brown, A., Biederman, J., Faraone, S. V., Makris, N., Monuteaux, M. C., Whitfield-Gabrieli, S., Vitulano, M., Schiller, M., & Seidman, L. J., 2010. Sex differences in the functional neuroanatomy of working memory in adults with ADHD. *Am J Psychiatry* 167, 87- 94.
- van Mourik R, Oosterlaan J, Sergeant JA (2005). The Stroop revisited: a meta-analysis of interference control in AD/HD. *J Child Psychol Psychiatry* 46(2): 150-165.
- Volkow N, Ding Y-S, Fowler J, Wang G, Logan J, Gatly J, *et al* (1995). Is Methylphenidate like Cocaine? Studies on thier phamacokinetics and distribution in the human brain. *Archives of General Psychiatry* 52: 456-463.
- Volkow N, Wang G, Fowler J, Logan J, Angrist B, Hitzemann R, *et al* (1997). Effects of Methylphenidate on Regional Brain Glucose Metabolism in Humans: Relationship to Dopamine D2 Receptors. *American Journal of Psychiatry* 154(1): 50-55.
- Volkow ND, Wang GJ, Fowler JS, Gatley SJ, Logan J, Ding YS, *et al* (1998). Dopamine transporter occupancy by intravenous methylphenidate: Implications for its reinforcing effects. *Society for Neuroscience Abstracts* 24(1-2): 778.
- Volkow ND, Fowler JS, Wang G, Ding Y, Gatley SJ (2002a). Mechanism of action of methylphenidate: insights from PET imaging studies. *J Atten Disord* 6 Suppl 1: S31-43.
- Volkow ND, Fowler JS, Wang GJ, Ding YS, Gatley SJ (2002b). Role of dopamine in the therapeutic and reinforcing effects of methylphenidate in humans: results from imaging studies. *European Neuropsychopharmacology* 12(6): 557-566.

- Volkow ND, Wang GJ, Kollins SH, Wigal TL, Newcorn JH, Telang F, *et al* (2009). Evaluating dopamine reward pathway in ADHD: clinical implications. *JAMA* 302(10): 1084-1091.
- Volkow ND, Wang GJ, Ma YM, Fowler JS, Wong C, Jayne M, *et al* (2006). Effects of expectation on the brain metabolic responses to methylphenidate and to its placebo in non-drug abusing subjects. *Neuroimage* 32(4): 1782-1792.
- Volkow ND, Wang GJ, Newcorn J, Fowler JS, Telang F, Solanto MV, *et al* (2007a). Brain dopamine transporter levels in treatment and drug naive adults with ADHD. *Neuroimage* 34(3): 1182-1190.
- Volkow ND, Wang GJ, Newcorn J, Telang F, Solanto MV, Fowler JS, *et al* (2007b). Depressed dopamine activity in caudate and preliminary evidence of limbic involvement in adults with attention-deficit/hyperactivity disorder. *Arch Gen Psychiatry* 64(8): 932-940.
- Wilens TE (2008). Effects of methylphenidate on the catecholaminergic system in attention-deficit/hyperactivity disorder. *J Clin Psychopharmacol* 28(3 Suppl 2): S46-53.
- Willcutt EG, Doyle AE, Nigg JT, Faraone SV, Pennington BF (2005). Validity of the executive function theory of attention-deficit/hyperactivity disorder: a meta-analytic review. *Biological Psychiatry* 57(11): 1336-1346.

Table 1. Main variables of the Simon task by group

Performance measure	Healthy Controls	ADHD placebo	ADHD MPH
	N = 13	N = 12	N = 12
MRT congruent (ms)	430 (72)	541 (124)	504 (124)
MRT incongruent (ms)	537 (89)	620 (122)	579 (128)
Error rate congruent (%)	2 (2)	3 (2)	2 (3)
Error rate incongruent (%)	23 (14)	19 (9)	19 (15)

MRT = mean reaction time.



Table 2. Within-group ANOVA differences in brain activation in boys with ADHD between Placebo and Methylphenidate for the Simon task

Brain region	Brodman area (BA)	Tal. coordinates (x;y;z)	N of voxels	Cluster p-value
Methylphenidate > Placebo				
L cerebellum/fusiform/middle/inferior temporal	37/21/19	-11;-52;-13	163	0.001
R inferior frontal/premotor/superior temporal/inferior parietal	45/44/6/42/22	65;-15;4	71	0.000
Placebo > Methylphenidate				
No effect				

Table 3. Between-group ANCOVA differences in brain activation between control boys and boys with ADHD under either the Placebo or the Methylphenidate condition for the contrast of Simon vs oddball condition

Brain region	Brodman area (BA)	Tal. coordinates (x;y;z)	N of voxels	Cluster p-value
Controls > ADHD under Placebo				
<i>R inferior frontal/inferior parietal*</i>	45/9/40	18;-33;59	182	0.007
<i>L ventromedial frontal/basal ganglia/thalamus*</i>		-25;0;9	242	0.003
R SMA/anterior/posterior cingulate/superior parietal	6/24/7	4;-11;37	282	0.004
L superior/middle temporal/occipital	22/39	-43;-37;20	69	0.003
Controls > ADHD under Methylphenidate				
L SMA/anterior cingulate/precuneus	24/32/6/7	-22;-11;48	297	0.006
L middle temporal/occipital	19/37	-36;-67;-13	53	0.001
L superior temporal/inferior parietal/precuneus	22/40/7	-36;-30;20	49	0.007

SMA = Supplementary Motor Area; N voxels = number of voxels. Tal. Coordinates = Talairach coordinates. P-value for ANCOVAs at family-wise error-corrected cluster-level contrast of  $p < 0.01$ . R = right; L = left. Boys with ADHD under placebo had no increased activation compared to controls for either condition. \*No differences were observed between boys with ADHD under Methylphenidate and healthy control boys in these two clusters.

## Figure Legends:

Figure 1. Increased brain activation with the single dose of Methylphenidate compared to placebo in boys with ADHD during interference inhibition. Axial slices for within-group ANOVA results comparing Methylphenidate and Placebo for the contrast of incongruent – oddball trials at family-wise error-corrected cluster-level contrast of  $p < 0.01$ . Methylphenidate compared to Placebo enhanced activation in right inferior/premotor cortex and in a cluster comprising left cerebellum and middle and inferior temporal lobes. No brain regions were enhanced under Placebo compared to Methylphenidate. Talairach z-coordinates are indicated for slice distance (in mm) from the intercommissural line. The right side of the Figure corresponds to the right side of the brain. The colour bars indicate p-values with lighter colours reflecting higher p-values.

Figure 2. Axial slices showing significantly reduced activation in boys with ADHD under Placebo compared to healthy comparison boys at family-wise error-corrected cluster-level contrast (ANCOVA) of  $p < 0.01$  for the contrast of incongruent – oddball trials in the Simon task. No increased activation was observed in ADHD patients compared to healthy controls. Under the Methylphenidate condition, brain activation differences between groups were no longer observed in the clusters in right inferior/DLPFC and the left caudate/thalamus/ventromedial frontal

lobe. Talairach z-coordinates are indicated for slice distance (in mm) from the intercommissural line. The right side of the Figure corresponds to the right side of the brain. The colour bars indicate p-values with lighter colours reflecting higher p-values.

Figure 3. Standardised BOLD responses in areas of ANCOVA group differences for a) comparison between healthy control boys and ADHD boys under the placebo condition and b) comparison between healthy control boys and ADHD boys under the Methylphenidate condition. The colour bars indicate p-values with lighter colours reflecting higher p-values.

Supplementary Figure 1. Axial slices for the within-group activation maps for the incongruent – oddball in the Simon task for the healthy control boys, and for the ADHD boys under either Placebo or Methylphenidate. Talairach z-coordinates are indicated for slice distance (in mm) from the intercommissural line. The right side of the figure corresponds to the right side of the brain. The colour bars indicate p-values with lighter colours reflecting higher p-values.

-10



0



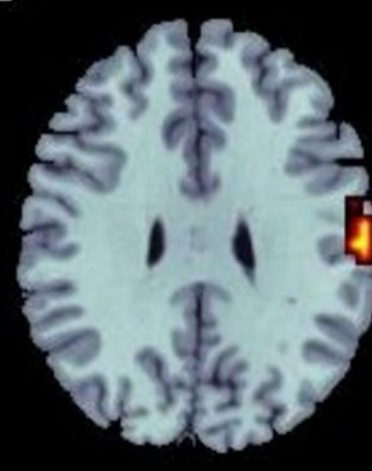
10



20



30



40



Pvalue

0.050000

0.000291

0.000000

0.000000

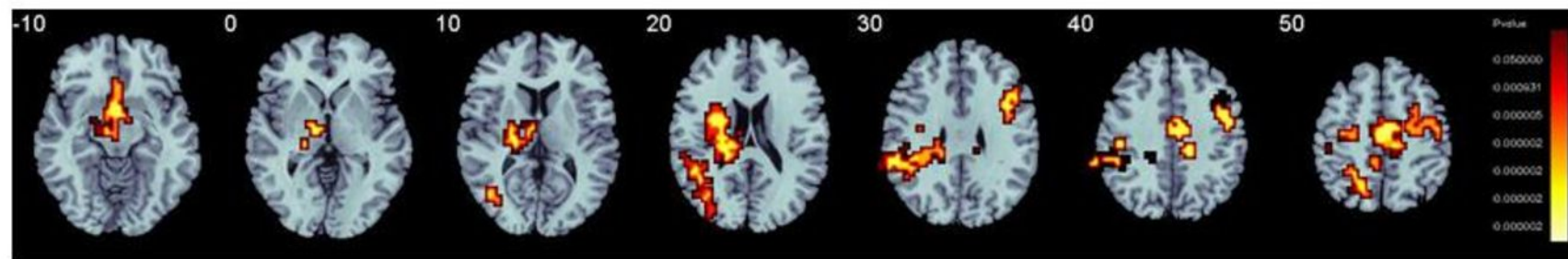
0.000000

0.000000

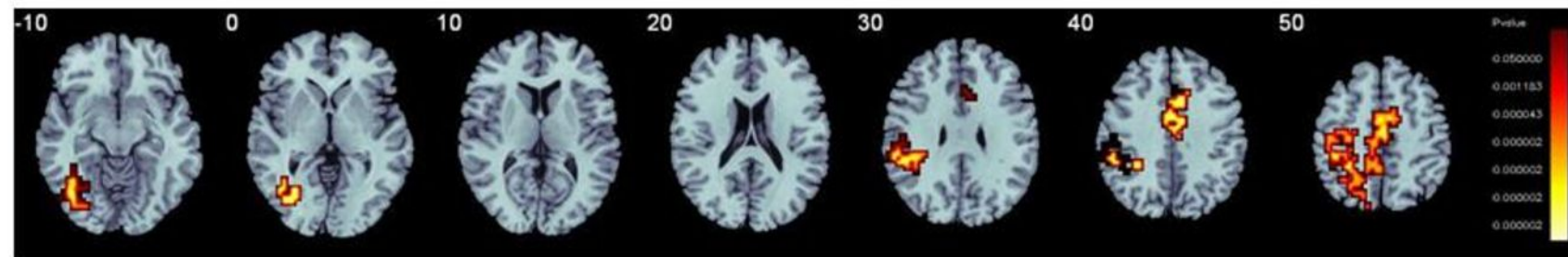
0.000000



Between-group ANOVA comparison between healthy boys and boys with ADHD under the Placebo condition

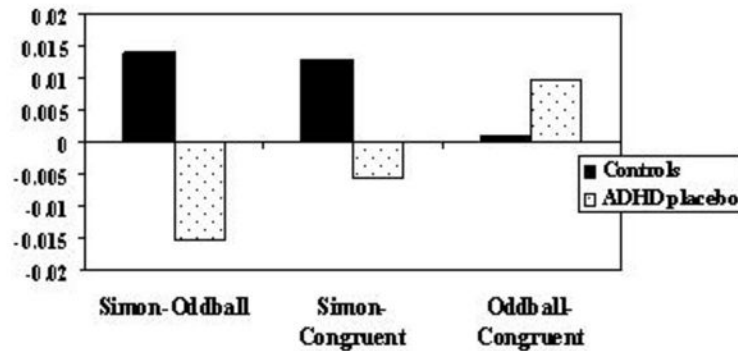


Between-group ANOVA comparison between healthy boys and boys with ADHD under the Methylphenidate condition

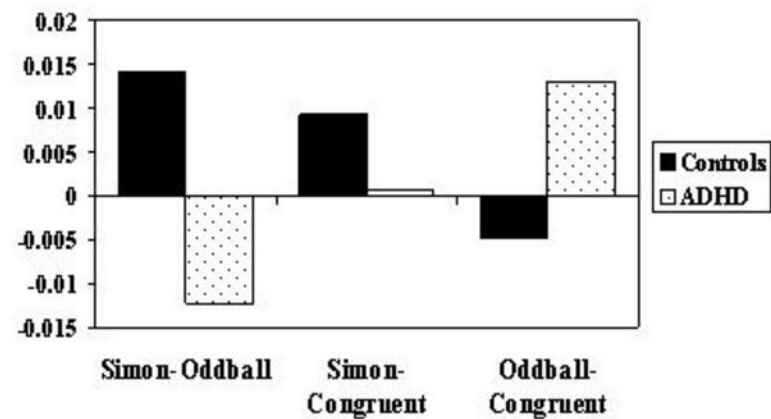


a) Standardised BOLD response in ANCOVA group difference clusters for the contrast of control versus ADHD boys under Placebo

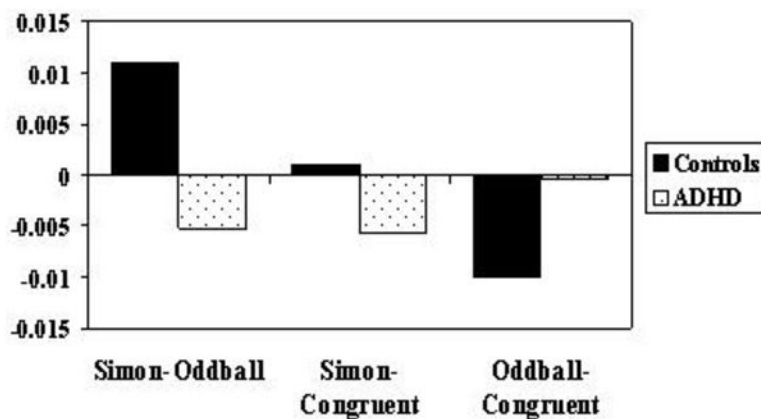
Right inferior frontal/parietal



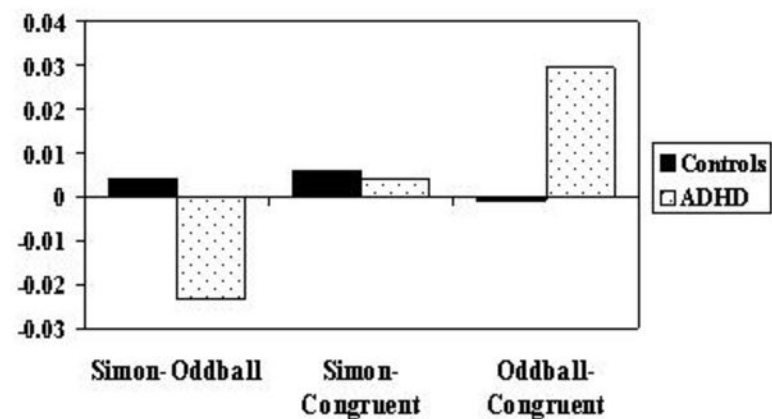
Left vmPFC/basal ganglia/thalamus



SMA/cingulate



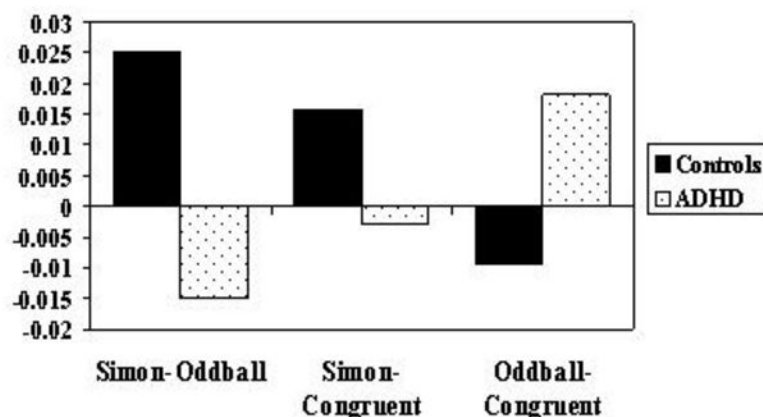
Left superior temporal



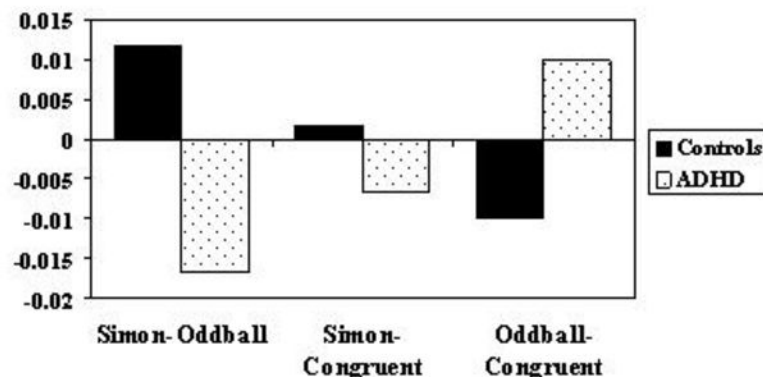


b) Standardised BOLD response in ANCOVA group difference clusters for the contrast of control versus ADHD boys under Methylphenidate

SMA/cingulate



Left superior temporal



Left occipital

