



HAL
open science

Neurocognitive function in dopamine- β -hydroxylase deficiency

Marieke Jepma, Jaap Deinum, Christopher Asplund, Serge Rombouts, Jouke Tamsma, Nathanja Tjeerdema, Michiel Spapé, Emily Garland, David Robertson, Jacques Lenders, et al.

► **To cite this version:**

Marieke Jepma, Jaap Deinum, Christopher Asplund, Serge Rombouts, Jouke Tamsma, et al.. Neurocognitive function in dopamine- β -hydroxylase deficiency. *Neuropsychopharmacology*, 2011, 10.1038/npp.2011.42 . hal-00627921

HAL Id: hal-00627921

<https://hal.science/hal-00627921>

Submitted on 30 Sep 2011

HAL is a multi-disciplinary open access archive for the deposit and dissemination of scientific research documents, whether they are published or not. The documents may come from teaching and research institutions in France or abroad, or from public or private research centers.

L'archive ouverte pluridisciplinaire **HAL**, est destinée au dépôt et à la diffusion de documents scientifiques de niveau recherche, publiés ou non, émanant des établissements d'enseignement et de recherche français ou étrangers, des laboratoires publics ou privés.

Neurocognitive function in dopamine- β -hydroxylase deficiency

Running title: D β H deficiency and cognition

Marieke Jepma^{1,2}, Jaap Deinum³, Christopher L. Asplund⁴, Serge A. R. B. Rombouts^{1,2,5}, Jouke T. Tamsma⁶, Nathanja Tjeerdema⁶, Michiel M. Spapé⁷, Emily M. Garland⁸, David Robertson⁸, Jacques W. M. Lenders^{3,9}, and Sander Nieuwenhuis^{1,2}

¹ Leiden University, Institute of Psychology, the Netherlands

² Leiden Institute for Brain and Cognition (LIBC), the Netherlands

³ Department of Internal Medicine, Division of Vascular Medicine, Radboud University Nijmegen Medical Center, Nijmegen, The Netherlands

⁴ Department of Psychology, Vanderbilt Vision Research Center, Vanderbilt University, Nashville, USA

⁵ Department of Radiology, Leiden University Medical Center, Leiden, the Netherlands

⁶ Department of General Internal Medicine & Endocrinology, Leiden University Medical Centre, the Netherlands

⁷ School of Psychology, University of Nottingham, Nottingham, UK

⁸ Vanderbilt University School of Medicine, Nashville, TN, USA

⁹ Department of Medicine III, Carl Gustav Carus University Medical Center, Dresden, Germany

Correspondence to: Marieke Jepma, Leiden University, Department of Psychology, Cognitive Psychology Unit, Wassenaarseweg 52, 2333 AK Leiden, the Netherlands. Phone: +31-71-5273646. Fax: +31-71-5273619. E-mail: mjepma@fsw.leidenuniv.nl

Abstract

Dopamine- β -hydroxylase (D β H) deficiency is a rare genetic syndrome characterized by the complete absence of norepinephrine in the peripheral and the central nervous system. D β H-deficient patients suffer from several physical symptoms, which can be treated successfully with L-threo-3,4-dihydroxyphenylserine, a synthetic precursor of norepinephrine. Informal clinical observations suggest that D β H-deficient patients do not have obvious cognitive impairments, even when they are not medicated, which is remarkable given the important role of norepinephrine in normal neurocognitive function. The present study provided the first systematic investigation of neurocognitive function in human D β H deficiency. We tested five D β H-deficient patients and ten matched healthy control participants on a comprehensive cognitive task battery, and examined their pupil dynamics, brain structure and the P3 component of the electroencephalogram. All participants were tested twice; the patients were tested once ON and once OFF medication. Magnetic resonance imaging scans of the brain revealed that the patients had a smaller total brain volume than the control group, which is in line with the recent hypothesis that norepinephrine has a neurotrophic effect. In addition, the patients showed an abnormally small or absent task-evoked pupil dilation. However, we found no substantial differences in cognitive performance or P3 amplitude between the patients and the control participants, with the exception of a temporal-attention deficit in the patients OFF medication. The largely spared neurocognitive function in D β H-deficient patients suggests that other neuromodulators have taken over the function of norepinephrine in the brains of these patients.

Keywords: Dopamine- β -hydroxylase deficiency, norepinephrine, cognition, brain, DOPS

Introduction

The locus coeruleus–norepinephrine (LC–NE) system is one of the major neuromodulatory systems in the brain. For a long time, investigators have associated this system with basic functions such as arousal and the sleep-wake cycle (Aston-Jones et al., 1984; Jouvet, 1969), and with various neuropsychiatric disorders such as depression and attention-deficit hyperactivity disorder (Ressler and Nemeroff, 2001; Siever and Davis, 1985). In addition, recent studies have shown that the LC-NE system is involved in more specific cognitive functions, such as memory, attention, perception, and decision making (Aston-Jones and Cohen, 2005; Robbins, 1997; Sara, 2009). These findings suggest that norepinephrine (NE) is essential for normal cognitive function in humans.

D β H deficiency is a rare genetic syndrome that is characterized by the congenital absence of the enzyme dopamine- β -hydroxylase (D β H), which is responsible for the conversion of dopamine (DA) to NE (Man in't Veld et al., 1987a; Robertson et al., 1986). As a result, D β H deficiency is characterized by a complete lack of NE and epinephrine in both the central and the peripheral nervous system (Man in't Veld et al., 1987a). There are currently approximately 15 patients with D β H deficiency known worldwide. These patients suffer from several physical symptoms, including severe orthostatic hypotension, fatigue and impaired exercise tolerance (Robertson and Garland, 2010). The only effective treatment of D β H deficiency involves administration of the drug L-threo-3,4-dihydroxyphenylserine (DOPS, droxidopa), which is converted directly into NE via L-aromatic-amino-acid decarboxylase, thereby bypassing D β H (Biaggioni and Robertson, 1987; Goldstein, 2006; Man in't Veld et al., 1987b). Studies in rats and mice have shown that DOPS crosses the blood-brain barrier, and activates the production of NE in the central nervous system as well as the peripheral nervous system (Ishikawa et al., 1987; Kato et al., 1987a,b; Semba et al., 1985; Thomas et al., 1998). Treatment

with DOPS results in a dramatic relief of physical symptoms and a substantial improvement of the quality of life of D β H-deficient patients.

The biochemical features, autonomic physiology and physical symptoms associated with human D β H deficiency have already been described in several studies (e.g., Mathias et al., 1990; Robertson et al., 1991; Thompson et al., 1995; Timmers et al., 2004). In addition, a post-mortem microscopic examination of the brain of one D β H-deficiency patient has revealed no histological abnormalities and no evidence for neuronal loss (Cheshire et al., 2006). However, to date there have been no systematic studies on cognitive and brain function in D β H deficiency. Informal clinical observations suggest that even before starting treatment, D β H-deficient patients do not have obvious cognitive impairments, which is striking given the large amount of evidence that NE plays an important role in normal cognitive function (Sara, 2009). This suggests that more carefully controlled laboratory tests may reveal subtle neurocognitive deficits in D β H-deficient patients that have remained unnoticed in informal observations.

The present study provides the first systematic evaluation of neurocognitive function in D β H deficiency. We tested 5 patients with D β H deficiency on a battery of cognitive tasks that have been proposed to depend on normal noradrenergic function, including an emotional working-memory task (Chamberlain et al., 2006; Oei et al., 2010) and a temporal-attention task (attentional-blink task; De Martino et al., 2007; Nieuwenhuis et al., 2005a; Warren et al., 2009), expecting that these tasks would reveal possible abnormalities in the D β H-deficient patients. In addition, we examined task-evoked changes in pupil diameter, and recorded the electroencephalogram (EEG) during a target-detection task to examine event-related potential (ERP) correlates of noradrenergic activity (Liu et al., 2009; Nieuwenhuis et al., 2005b; Pineda et al., 1989). To assess whether potential abnormalities in performance were restricted to NE-mediated tasks, we also tested the patients on a spatial-attention task

that does not probe noradrenergic function (Greenwood et al., 2005; Nieuwenhuis et al., 2007). Finally, we acquired an MRI scan of the patients' brain to assess possible abnormalities in brain volume and structure. We tested the patients once ON and once OFF DOPS medication, and compared their results with those of a matched healthy control group.

Materials and methods

Participants

We tested five D β H-deficient patients (two Dutch, two American, and one Canadian) and ten healthy controls (all Dutch). The two American patients were brothers, and the other patients were unrelated (see Supplementary Table 1 for the patients' demographic and clinical details). The genetic mutations in the DBH gene for the two Dutch patients (patients 1 and 2) and the Canadian patient (patient 5) have been identified (Deinum et al., 2004; Erez et al., 2010). Patient 1 is homozygous for the IVS1 +2T>C mutation, a mutation of the 5' splice site in the first intron which leads to abnormal splicing and hence a dysfunctional protein. Patient 2 is homozygous for a missense mutation in 764G>T (C255F). Patient 5 is homozygous for two missense mutations in 259G>A (V87M) and 991G>A (D331N). Patient 5 also has a rare mosaic deletion at chromosome 11p13 [46,XX,del(11)(p12p14)/46,XX] which is unrelated to her D β H-deficiency (Erez et al., 2010). The genetic mutations responsible for the D β H-deficiency in patients 3 and 4 are not yet known.

The patient and control group were matched for age, sex and IQ (Table 1). We used the Vocabulary subtest of the Wechsler Adult Intelligence Scale (WAIS III, Wechsler, 1997) and the Raven's Standard Progressive Matrices test (SPM; Raven et al., 1988) to estimate IQ. The Dutch patients and their controls were matched for educational level as well. Given the different educational systems in the US and the Netherlands it was not possible to match the American patients and their

Dutch control participants in terms of educational level; hence we matched for estimated IQ instead of educational level. Participants gave written informed consent before participation, and the study was approved by the medical ethics committee of the Leiden University Medical Center and the Institutional Review Board of Vanderbilt University.

General procedure

All participants were tested twice on the same cognitive-task battery, with an intervening period of six to thirteen days. Participants were seated in a chair during performance of all tests. The patient and control groups had similar intervening periods (Table 1). Two patients were tested ON medication on the first test day and OFF medication on the second test day, and the other three patients were tested in the opposite order. Two of these patients had never been on DOPS medication before and started taking medication at least two days before the second test day. The other patients stopped taking their daily medication four to thirteen days before the OFF-medication test day and stayed off medication up to and including this day. Preceding and during the ON-medication test day, the patients took their DOPS medication as usual.

The task battery included five cognitive tasks, described below and, in more detail, in the Supplementary Methods. At the beginning and end of each test day, participants completed the Positive Affect and Negative Affect Schedule (PANAS; Watson et al., 1988; translated into Dutch by Peeters et al., 1996). To measure catecholamine levels, we collected blood and 24-hour urine samples from the patients, prior to each test session (Table 1). Blood samples were taken after fifteen minutes of supine rest. We also collected blood samples from most control participants. Since we expected no differences in catecholamine levels between the two sessions for the control participants, their blood samples were

collected only once. Finally, on one of the test days a structural T1-weighted MRI brain scan was acquired (see Supplementary Methods for details of acquisition and analysis).

Emotional working-memory task

NE plays an important role in emotional memory (i.e., Chamberlain et al., 2006). The well-known phenomenon that emotional events are memorized better than neutral events (e.g., Cahill and McGaugh, 1998), for example, is associated with β -adrenergic-dependent modulations of amygdala-hippocampus interactions (Strange et al., 2003; Strange and Dolan, 2004). In addition, emotional distractor stimuli impair working-memory performance to a higher degree than neutral distractor stimuli (e.g., Buchner et al., 2004; Dolcos and McCarthy, 2006; Oei et al., 2009, 2010), an effect that is reduced by administration of the β -adrenergic antagonist propranolol (Oei et al., 2010). We examined the effects of emotional and neutral distractor stimuli on performance in the working-memory task used by Oei et al. (2009, 2010).

Each trial of this task started with the presentation of either one or four letters (the target set), which had to be held in memory for later recognition. The target set was followed by a 1,500-ms delay period during which either a neutral picture or a negatively arousing picture was presented. After this, four letters (the probe set) were presented and participants had to indicate, as quickly and accurately as possible, whether or not the probe set contained a letter from the preceding target set.

Attentional-blink task

The attentional-blink paradigm is the most commonly used paradigm for investigating attentional selection in the temporal domain (for a review see Martens and Wyble, 2010). The attentional blink refers to a deficit in processing the second of two target stimuli that are presented in

close temporal succession. This deficit is most severe when the second target is presented within 200-400 ms after the first target (Raymond et al., 1992), and is thought to result from competition between the two target stimuli for limited attentional resources (Shapiro et al., 1997). When the two targets are presented within approximately 200 ms, performance is often spared (e.g., Hommel and Akyürek, 2005), a phenomenon termed “lag-1 sparing”.

The temporal dynamics of the LC-NE system suggest that the LC-NE system mediates attentional selection in the temporal domain (Cohen et al., 2004; Dayan and Yu, 2006; Usher et al., 1999). LC neurons exhibit a phasic increase in activity shortly following task-relevant or otherwise motivationally significant stimuli (Aston-Jones et al., 2000). The resulting transient release of NE in cortical areas temporarily increases the responsivity of these areas to their input, which selectively facilitates the processing of the eliciting stimulus (Berridge and Waterhouse, 2003; Servan-Schreiber et al., 1990). Phasic increases in LC activity are followed by a brief refractory period during which LC-NE-mediated facilitation of information processing is temporarily unavailable (e.g., Aghajanian et al., 1977). These temporal dynamics of the LC-NE system suggest that the attentional blink may be mediated by the LC-NE system (Nieuwenhuis et al., 2005a; Warren et al., 2009). Consistent with this idea, β -adrenergic blockade impaired detection of the second target in an attentional-blink task (De Martino et al., 2007).

On each trial of this task, participants viewed a rapid serial visual presentation (RSVP) stream consisting of 2 target stimuli (T1 and T2; digits) and multiple distractor stimuli (letters), presented for about 100 ms each. The temporal distance between T1 and T2 was 1, 2, 3 or 7 items. Following each stream, participants were asked to report T1 and T2.

Visual-search task

This task examined attentional selection in the spatial domain. The spatially-nonspecific pattern of LC projections to the cortex suggests that the LC-NE system does not mediate spatial attention (Cohen et al., 2004; Greenwood et al., 2005; Nieuwenhuis et al., 2007). This task was included to assess whether possible performance abnormalities of the D β H-deficient patients were restricted to NE-mediated tasks. On each trial of this task, participants searched for a target stimulus (a red vertical bar) among a variable number of distractor stimuli (green vertical bars and red horizontal bars) in a visual-search array, and indicated as quickly as possible whether the target stimulus was present or absent.

Oddball tasks combined with EEG measurement

We examined the P3, a prominent component of the scalp-recorded event-related brain potential. The P3 component is a broad, positive, large-amplitude potential which peaks between 300 and 400 ms following presentation of stimuli in any sensory modality (Sutton et al., 1965), and is largest over central-parietal midline electrodes. The amplitude of the P3 is strongly affected by the subjective probability and motivational significance of the eliciting stimulus: P3 amplitude increases with decreasing probability and with increasing motivational significance of the eliciting stimulus. In contrast, with the exception of tone intensity (Roth et al., 1984), P3 amplitude is relatively insensitive to physical stimulus properties. Several lines of evidence suggest that the P3 reflects the phasic response of the LC-NE system to the outcome of stimulus evaluation and decision making, and the consequent effects of the noradrenergic potentiation of information processing (reviewed in Nieuwenhuis et al., 2005b; see also Liu et al., 2009; Pineda et al., 1989).

The most common paradigm for studying the P3 is the oddball task, in which infrequent target stimuli are embedded in a series of frequently presented non-target stimuli (standards), and participants have to respond to each target stimulus but not to the standard stimuli. We measured participants' EEG

while they performed visual and auditory versions of the oddball task, and assessed the P3 elicited by target stimuli.

Pitch-discrimination task combined with pupillometry

We examined participants' pupil diameter during performance of a pitch-discrimination task. Although the luminance level is the most important determinant of pupil diameter, there are also small but reliable changes in pupil diameter related to cognitive processing (Beatty and Wagoner, 1978; Kahneman, 1973). A large number of studies have shown that task processing is accompanied by a rapid increase in pupil diameter, and that the size of this pupil dilation reflects the information-processing load (e.g., Hess and Polt, 1964).

Several studies have reported that D β H-deficient patients have small pupils, but a normal pupillary light reflex and accommodation response (Biaggioni et al., 1990; Man in 't Veld et al., 1987a; Robertson et al., 1986). In addition, one study reported a prolonged redilation time following the light reflex in a sibling pair with D β H deficiency (Smith and Smith, 1999). The light reflex and accommodation response both produce pupil constrictions, which are subserved by the iris sphincter muscles. These muscles are innervated by cholinergic input from the parasympathetic nervous system. In contrast, pupil dilation is controlled by the iris dilator muscles which are activated primarily via noradrenergic innervation of α -1 adrenoceptors (Hoffman and Taylor, 2001). This suggests that task-evoked pupil dilations in D β H-deficient patients might be abnormal.

On each trial of this task, a sequence of two tones was presented, and participants had to indicate whether the second tone was higher or lower in pitch than the first. We analyzed participants' baseline pupil diameter and their pupil dilation in response to the second tone.

Results

The control participants' behavioral, EEG and pupil data were analyzed by means of repeated-measures ANOVAs, with session (session 1 vs. session 2) and the independent task variables as within-subject factors. We tested whether the critical measures/effects in each patient OFF medication deviated from those in the control group using a modified *t*-test developed specifically to compare individual patients with a small control group (Crawford and Howell, 1998). In addition, we examined the effects of medication on the patients' scores, using the regression-based method developed by Crawford and Garthwaite (2006; see Supplementary Methods for details of these analyses).

We focus our description of the results on the critical measures/effects of each task. The full factorial analyses of the data, the PANAS (i.e., subjective state) data, and results of the individual participants are reported in the Supplementary Results.

Catecholamine concentrations

Table 2 shows the average plasma and urine NE and DA concentrations in the patient group ON and OFF medication, and the plasma concentrations in the control group (see Supplementary Table 2 for the data from the individual patients). When OFF medication, two of the patients (patients 3 and 4) had plasma NE concentrations that were significantly lower than that in the control group [p s (1-tailed) < 0.03 ; Crawford and Howell's (1998) modified *t*-test] and the other patients had undetectable plasma NE concentrations. The apparent extremely low residual plasma NE concentration in patients 3 and 4 were likely due to technical artifacts, since plasma concentrations of the NE metabolite dihydroxyphenylglycol (DHPG) were extremely low in these patients when they were OFF medication. DHPG concentrations in patients 3 and 4 OFF medication were lower than 0.03 nmol/l, which is less than 1% of normal. As expected, all patients' plasma and urine NE concentrations were higher when

ON compared to OFF medication, and this effect was especially pronounced for the urine concentrations. For the ON-medication session, the plasma NE concentrations of patient 1 and 5 did not differ significantly from the control group [$p(1\text{-tailed}) = 0.09$ and 0.08 , respectively], but the plasma NE concentrations of patient 3 and 4 were still lower than that in the control group [$p(1\text{-tailed}) = 0.048$ and 0.049 , respectively].

When OFF medication, all patients had higher plasma DA concentrations than the control group (all p s < 0.001). Although most patients' plasma DA concentrations were lower when ON compared to OFF medication, the ON medication concentration was still larger than that in the control group for all but one patient. The medication effects on the urine DA concentrations were less consistent; patients 1 and 2 had higher urine DA concentrations when ON medication, whereas patients 3, 4 and 5 showed the opposite effect.

Emotional working-memory performance

The critical measure in this task was the interfering effect of emotional relative to neutral distractors on reaction time (RT). As expected, the control participants responded more slowly on trials with emotional compared to neutral distractors [$F(1, 7) = 14.7, p = 0.006$]. In addition, consistent with previous studies (Oei et al., 2009, 2010), distractor type interacted with target presence [$F(1, 7) = 16.3, p = 0.005$], indicating that the emotional-interference effect on RT was significant on target-present trials [$F(1, 7) = 43.9, p < 0.001$; effect range = 80 - 299 ms] but not on target-absent trials [$F(1, 7) = 0.75, p = 0.42$].

Figure 1 shows the average increase in correct RT on trials with emotional relative to neutral distractors as a function of target presence, in the control group and in the patient group OFF and ON medication. When OFF medication, all patients showed an emotion-related slowing of responses on

target-present trials that did not differ from the effect in the control group (effect range = 72 - 226 ms; all $t_s(7) < 0.8$; $p_s > 0.24$; Table 4; see Supplementary Figure 2 for the individual effects). In addition, all patients showed a smaller emotional interference effect when they were ON compared to OFF medication, but this medication effect did not differ significantly from the control group's practice effect in any of the patients (all $p_s > 0.08$; Table 4). The normal emotional-interference effect in the patients OFF medication, and the finding that this interference effect was less pronounced when the patients were ON medication are both remarkable given the evidence that emotional-interference effects are normally mediated by NE.

The full factorial analysis of the effects of target presence, working-memory load, distractor type and session on correct RT and accuracy in the control group is reported in the Supplementary Results and in Supplementary Figure 1.

Attentional-blink performance

Figure 2 shows the average T1 accuracy (upper panels) and T2 accuracy (lower panels; contingent on correct T1 identification) in the control group and the patient group, as a function of lag (1, 2, 3 or 7) and session. The T2 accuracy curves show a pattern that is characteristic of attentional blink data: lag-1 sparing, followed by a drop in performance for lags 2 and 3 (i.e., the attentional blink), and a recovery of performance at lag 7. This pattern was expressed in a significant effect of lag in the control group [$F(3, 27) = 12.1, p = 0.001$].

The critical measure in this task is the size of the attentional blink, which we defined as the decrease in T2 identification accuracy at lags 2 and 3, relative to lag 7 (Maclean and Arnell, 2010). When OFF medication, the patient group showed a larger attentional blink than the control group (average = 33.5% vs. 16.7%), but the difference from the control group only approached significance in

patient 1 (Table 4; see Supplementary Figure 3 for the individual T2 accuracy curves). In addition, the patients showed a smaller attentional blink when they were ON compared to OFF medication: for three of the four patients tested on this task, the effect of medication on attentional-blink size was significantly larger than the practice effect in the control group ($ps < 0.05$; Table 4). The fourth patient also showed a marked increase in T2 accuracy when ON compared to OFF medication, but this did not result in a significant effect on attentional-blink size because the enhancing effect of medication was present at lags 2, 3 and 7. Together, these findings suggest that T2 identification accuracy during the attentional blink was impaired in the patients OFF medication, and that this impairment was restored by the DOPS medication.

Visual-search performance

The critical measure in this task was the effect of set size (i.e., the total number of items in the search display) on RT. As expected, RT in the control group showed an increasing trend with set size [$F(2, 18) = 29.7, p < 0.001$], and set-size effects were larger for target-absent than target-present trials [$F(2, 18) = 7.8, p = 0.004$]. The variation in set size allowed us to derive the function relating RT to set size. The slope of this function measures the cost for adding additional items to the display and is often interpreted as “search efficiency,” with steeper slopes indicating slower, less efficient search.

Figure 3 shows the average slopes for the control group and the patient group, as a function of target presence and session. The average slopes in the patient group were very similar to those in the control group, both ON and OFF medication. In the OFF-medication session, none of the patients’ slopes deviated significantly from the control group (all $ts(9) < 1.2$; $ps > 0.13$; Table 4; see Supplementary Figure 5 for the individual slopes). In addition, the effects of medication did not differ significantly from the control group’s practice effect in any of the patients (all $ps > 0.11$; Table 4).

These results indicate that the patients had normal visual search efficiency, both ON and OFF medication.

The full factorial analysis of the effects of target presence, set size and session in the control group is reported in the Supplementary Results and in Supplementary Figure 4.

The P3 component of the electroencephalogram

P3 amplitudes were maximal at electrode Pz in both the control group and the patient group; hence we focused our analyses on this electrode position. Figure 4 shows the grand average waveforms for standard and target stimuli in the visual and auditory oddball task, for the control group and the patient group ON and OFF medication. As expected, P3s were much larger for target stimuli than for standard stimuli. Figure 5 shows the P3 amplitudes of the individual participants.

When OFF medication, patient 5 showed a significantly smaller P3 amplitude than the control group in both the auditory and the visual oddball task, and patient 4 showed a significantly smaller P3 amplitude than the control group in the visual oddball task only (Table 4). For the other patients, P3 amplitude did not differ significantly from the control group. The effect of medication on P3 amplitude did not differ significantly from the control group's test-retest effect in any of the patients (all $ps > 0.19$; Table 4). These findings suggest that some but not all patients showed a P3 that was smaller than the P3 in the normal population, independently of whether they were ON or OFF medication.

The analyses of target-detection performance (RT and accuracy) are reported in the Supplementary Results and in Supplementary Figure 6.

Pupil diameter during the pitch-discrimination task

The average baseline pupil diameter in the control group was 3.86 mm (SD = 0.56), and did not differ across the two sessions [$t(7) = 0.31, p = 0.77$]. When OFF medication, patient 2 had significantly smaller pupils than the control group. Patient 5 had significantly larger pupils than the control group which was due to a mosaic deletion at chromosome 11p13, unrelated to her D β H deficiency (Erez et al., 2010). The other patients' baseline pupil diameter did not differ significantly from the control group (Table 4; see Supplementary Table 1 for each patient's baseline pupil diameter). Remarkably, patient 4 had significantly smaller pupils when he was ON compared to OFF medication. For the other patients, there was no significant effect of medication on baseline pupil diameter (Table 4).

We next assessed the magnitude of the task-evoked pupil dilations. As expected, all control participants showed a substantial pupil dilation following the comparison tone (average pupil dilation = 0.16 mm; SD = 0.04). Pupil dilation in the control group was not significantly affected by session [$F(1, 7) = 2.3, p = 0.17$] or tone-discrimination difficulty [$F(3, 21) = 2.4, p = 0.09$]. Figure 6 shows the time course of the grand-average pupil dilation following the comparison tone, for the control group and the patient group ON and OFF medication. When OFF medication, all but one patient showed significantly smaller task-evoked pupil dilations than the control group (see Supplementary Table 1 for each patient's average pupil dilation). Remarkably, patient 4 showed a significantly smaller pupil dilation when ON compared to OFF medication. The pupil dilation of patient 3 was also significantly affected by medication, but this result must be interpreted with caution because this patient's pupil dilations were negative in both sessions. For the other patients, there was no significant effect of medication on the task-evoked pupil dilation (Table 4).

The analyses of tone-discrimination performance (RT and accuracy) are reported in the Supplementary Results and in Supplementary Figure 7.

Brain structure

Table 3 shows the average total brain volumes and the percentages of grey matter, white matter and cerebrospinal fluid (CSF) in the patient group and the control group, separately for the male and female participants. Four of the five patients had a smaller total brain volume than the control group. However, the proportions of grey matter, white matter and CSF did not differ from the control group in any of the patients (Table 4; see Supplementary Table 1 for the data of the individual patients).

The voxel-based morphometry analysis (Supplementary Material) revealed no significant topographic differences in grey matter density between the patient group and the control group. The TCFE-corrected p -values for both the controls > patients contrast and the patients > controls contrast were larger than 0.34 in all voxels, suggesting that there were no trends for a group difference in grey matter density in any brain region. Together, these results suggest that most of the patients had an overall smaller brain than the control group, but that this difference was not confined to a specific tissue type or brain region.

Discussion

The present study was the first systematic investigation of neurocognitive function in D β H deficiency. We tested five D β H-deficient patients and a matched healthy control group on a comprehensive cognitive task battery. In addition, we examined whether the patients differed from the control group with regard to the P3 component of the electroencephalogram, pupil dynamics and brain structure.

The patients' performance on most cognitive tasks did not differ substantially from the healthy control group, irrespective of whether they were ON or OFF DOPS medication. More specifically, the patients showed normal visual-search efficiency, tone-discrimination performance and target-detection

performance, and a normal emotional-interference effect. In addition, we found an intact P3 component in most patients. Since DOPS medication effectively ameliorates D β H-deficient patients' orthostatic hypotension, medication-related changes in blood pressure and consequent effects on fatigue and affective state are important factors to take into account when comparing the patients' performance ON versus OFF medication. However, it is unlikely that these factors were responsible for the lack of medication effects on cognitive performance, for the following reasons. First, potential effects of fatigue or other physical symptoms on task performance would predict impaired performance when patients were OFF relative to ON medication, which was not found in most tasks. Second, the patients reported no substantial differences in affective state between the two sessions (Supplementary Table 3). Third, the critical measures in our cognitive tasks were difference scores (i.e. differences between task conditions), hence general medication-related effects on performance would cancel out in these difference scores.

The only cognitive function that was affected in the patients OFF medication was attentional selection in the temporal domain, as reflected by an increased attentional blink (i.e., impairment in processing the second of two target stimuli that are presented in close temporal succession). The attentional blink has not only been associated with NE (De Martino et al., 2007; Nieuwenhuis et al., 2005a; Warren et al., 2009), but also with dopamine (DA; Colzato et al., 2008); Colzato et al. have provided indirect evidence that higher DA levels are associated with a smaller attentional blink. Because D β H-deficient patients do not convert DA to NE, they are not only characterized by a lack of NE but also by increased DA levels (Man in 't Veld, 1987a), and DOPS medication both increases NE levels and reduces the excessive DA levels (Man in 't Veld et al., 1987b; Thomas et al., 1998). Thus, based on the patients' DA levels, it would be predicted that the patients OFF medication would show a smaller attentional blink than the healthy control group, and that the patients would show a smaller

attentional blink OFF medication than ON medication. Since the opposite effects were found, this strongly suggests that the increased attentional blink in the patients OFF medication was due to the absence of NE rather than the excess of DA.

The largely spared neurocognitive function in the D β H-deficient patients is remarkable given the large body of evidence suggesting that the LC-NE system plays an important role in many aspects of neurocognitive function (for recent reviews see Robbins and Arnsten, 2009; Sara, 2009). For example, individual differences in noradrenergic genotype in the normal population are predictive of performance on cognitive tasks measuring attention (Greene et al., 2009) and working memory (Parasuraman et al., 2005), and have been related to vulnerability to several psychiatric disorders (e.g., Cubells and Zabetian, 2004; Roman et al., 2002). In addition, D β H-knockout mice that lack NE due to a targeted disruption of the D β H gene show several behavioral deficits, including impairments in active-avoidance learning (Thomas and Palmiter, 1997a), memory retrieval (Murchison et al., 2004), and maternal and social behavior (Marino et al., 2005; Thomas and Palmiter, 1997b). Finally, pharmacological, neurophysiological, and lesion studies in animals suggest that the LC-NE system plays a crucial role in regulating the optimization of behavioral performance (e.g., Aston-Jones and Cohen, 2005; Bouret and Sara, 2005). It must be noted, however, that our task battery did not address all aspects of cognitive function. For example, we did not assess higher-level cognitive functions such as executive control and exploratory behavior. Therefore, our results leave open the possibility that the patients have subtle cognitive deficits that were not revealed by our task battery. In addition, although our data clearly indicate that there were no substantial abnormalities in the patients' performance on our test battery, it cannot be excluded that there were some subtle differences which failed to reach significance due to a lack of power of our experimental design.

Although the patients' relatively normal performance on our cognitive task battery is striking, it is consistent with informal clinical observations that D β H-deficient patients do not have obvious cognitive impairments or psychiatric disorders. Indeed, the absence of mental problems in most D β H-deficient patients that have been encountered so far has intrigued investigators in the areas of depression and schizophrenia (Cubells and Zabetian, 2004). It is especially remarkable that the patients OFF medication did not show impaired performance on cognitive tasks that are normally mediated by the LC-NE system (e.g., the emotional working-memory task), and showed a relatively intact P3 component, which is thought to reflect the noradrenergic potentiation of information processing (Liu et al., 2009; Nieuwenhuis et al., 2005b; Pineda et al., 1989). These findings suggest that alternative neural mechanisms and/or neuromodulatory systems compensate for the absence of NE in D β H-deficient patients. Previous findings that D β H-deficient patients have a relatively normal sleep pattern (Tulen et al., 1990; 1991), although the sleep-wake cycle is normally mediated by the LC-NE system (Hobson et al., 1986; Jouvet, 1969), are consistent with this idea.

Since D β H is responsible for the conversion of DA to NE, it is thought that DA rather than NE is stored and released by noradrenergic neurons in D β H-deficient patients. Indeed, plasma DA levels in DBH-deficient patients respond to various physiological and pharmacological manipulations that normally affect plasma NE levels (Man in 't Veld, 1987a; Robertson et al., 1986), although it remains to be determined whether this also applies to DA levels in the central nervous system. Thus, a possible explanation for the spared neurocognitive function in D β H deficiency is that DA has, to some extent, taken over the function of NE in the brains of D β H-deficient patients. Obviously, a functional replacement of NE by DA would require the presence of postsynaptic receptors with DA affinity in noradrenergic synapses. Studies in mice suggest that some α 2-adrenergic receptor subtypes have a comparable affinity for DA and NE (Zhang et al., 1999), whereas α 1- and β -adrenergic receptors have a

much lower affinity for DA than for NE (Zhang et al., 2004). However, since the congenital absence of NE may have altered the affinity of adrenergic receptors, it is unknown whether the same receptor characteristics apply to D β H-deficient patients. Another possible explanation for a functional replacement of NE by DA is that D β H-deficient patients have an increased density of postsynaptic DA receptors on noradrenergic synapses. A recent positron emission tomography (PET) study in mice suggests that D β H knockout mice have a normal density of D2 dopamine receptors in the high-affinity state (Skinbjerg et al., 2010), which does not support this hypothesis. However, since results from D β H-knockout mice might not be generalizable to human D β H-deficient patients, the assessment of DA receptor densities in human D β H-deficient patients, for example using PET scanning, remains an important objective for future studies.

It is interesting to note that the first study that used gene targeting to produce D β H-deficient mice found that the majority of D β H-deficient embryos died in mid-gestation and only 5% reached adulthood (Thomas et al., 1995). To prevent embryonic lethality, subsequent studies using D β H-knockout mice have supplied the embryos with adrenergic agonists (isoproterenol and phenylephrine) and DOPS via the maternal drinking water, such that NE is present in the D β H-knockout mice until birth. Thomas et al.'s (1995) results suggest that the human D β H-deficient patients may represent the minority of D β H-deficiency cases that have survived this condition. If this is true, an interesting speculation is that these patients were able to survive because they happened to have optimal dopaminergic or noradrenergic genotypes to compensate for the absence of NE. Future studies might assess this possibility by examining whether the frequency of occurrence of specific alleles of dopaminergic and noradrenergic genes (e.g., the COMT, DAT, and the dopamine and noradrenergic receptor genes) in D β H-deficient patients deviates from those in the normal population.

In contrast to the generally normal neurocognitive function in the DBH-deficient patients, we did find clear abnormalities in their task-evoked pupil dilation response. The task-evoked pupil dilation was very small or absent in most of the patients, which might be due to a decreased noradrenergic innervation of the iris dilator muscle. However, it is also possible that the abnormal pupil dynamics in some of the patients resulted from ocular abnormalities unrelated to their DBH deficiency; this might explain why the pupil-dilation response was not restored by DOPS medication. Importantly, the patients' small or absent task-evoked pupil dilations did not reflect a decreased processing of the task-related stimuli, since their performance on the tone-discrimination task during which their pupils were measured was not impaired.

The patient group also differed from the control group with regard to total brain volume: all but one patient had a significantly smaller brain volume than the control group, but the relative proportions of grey matter, white matter and cerebrospinal fluid, and the distribution of grey matter volume across the brain did not deviate from those in the control group. The smaller brain volume in most DBH-deficient patients is in line with recent findings suggesting that NE has a neurotrophic effect on cortical neurons (e.g., Counts and Mufson, 2010; Kalinin et al., 2007; Madrigal et al., 2007, 2009). Apparently, the patients' decreased brain volume did not result in cognitive impairments; this suggests that although the patients have a smaller number of neurons, their neurons are intact and make proper connections.

To conclude, our findings suggest that neurocognitive function in human DBH-deficient patients is largely spared, even when they are OFF medication, but that their total brain volume is smaller than that of the normal population. The normal neurocognitive function in DBH-deficient patients is striking given the important role of NE in normal cognition, but corroborates informal clinical observations that most patients do not have obvious cognitive impairments. Our findings suggest that DBH-deficient patients have developed alternative mechanisms to compensate for the

absence of NE in the brain, possibly through a functional replacement of NE by DA; the nature of these compensatory mechanisms remains to be explored by future studies.

Disclosure/Conflict of Interest

The authors declare no conflict of interest.

Acknowledgements

This work was supported by the Netherlands Organization for Scientific Research. We would like to thank all patients for participating in the study, and Argho Ray, Rachel van der Ham, André Keizer, Sasha Key, Bonnie K. Black, and Susan Williams for their technical assistance.

References

- Aghajanian GK, Cedarbaum JM, Wang RY. Evidence for norepinephrine-mediated collateral inhibition of locus coeruleus neurons. *Brain Res* 1977; 136: 570-7.
- Aston-Jones G, Cohen JD. An integrative theory of locus coeruleus-norepinephrine function: adaptive gain and optimal performance. [Review]. *Annu Rev Neurosci* 2005; 28: 403-50.
- Aston-Jones G, Foote SL, Bloom FE. Anatomy and physiology of locus coeruleus neurons: functional implications. In: Ziegler M, Lake CR, editors. *Norepinephrine. Frontiers of Clinical Neuroscience*, Vol. 2. Baltimore, MD: Williams and Wilkins; 1984. p. 92-116.
- Aston-Jones G, Rajkowski J, Cohen J. Locus coeruleus and regulation of behavioral flexibility and attention. *Prog Brain Res* 2000; 126: 165-82.
- Beatty J, Wagoner BL. Pupillometric signs of brain activation vary with level of cognitive processing. *Science* 1978; 199: 1216-8.
- Berridge CW, Waterhouse BD. The locus coeruleus-noradrenergic system: modulation of behavioral state and state-dependent cognitive processes. *Brain Res Brain Res Rev* 2003; 42: 33-84.
- Biaggioni I, Goldstein DS, Atkinson T, Robertson D. Dopamine-beta-hydroxylase deficiency in humans. *Neurology* 1990; 40: 370-3.
- Biaggioni I, Robertson D. Endogenous restoration of noradrenaline by precursor therapy in dopamine beta-hydroxylase deficiency. *Lancet* 1987; 2: 1170-2.
- Bouret S, Sara SJ. Network reset: a simplified overarching theory of locus coeruleus noradrenaline function. [Review]. *Trends Neurosci* 2005; 28: 574-82.
- Buchner A, Rothermund K, Wentura D, Mehl B. Valence of distractor words increases the effects of irrelevant speech on serial recall. *Mem Cognit* 2004; 32: 722-31.

- Cahill L, McGaugh JL. Mechanisms of emotional arousal and lasting declarative memory. [Review]. *Trends Neurosci* 1998; 21: 294-9.
- Chamberlain SR, Müller U, Blackwell AD, Robbins TW, Sahakian BJ. Noradrenergic modulation of working memory and emotional memory in humans. [Review]. *Psychopharmacology (Berl)* 2006; 188: 397-407.
- Cheshire WP Jr, Dickson DW, Nahm KF, Kaufmann HC, Benarroch EE. Dopamine beta-hydroxylase deficiency involves the central autonomic network. *Acta Neuropathol* 2006; 112: 227-9.
- Cohen JD, Aston-Jones G, Gilzenrat MS. A systems-level theory on attention and cognitive control: Guided activation, adaptive gating, conflict monitoring, and exploitation versus exploration. In: Posner MI, editor. *Cognitive neuroscience of attention*. New York: Guilford Press; 2004. p. 71–90.
- Cohen JD, Aston-Jones G, Gilzenrat MS. A systems-level theory on attention and cognitive control: Guided activation, adaptive gating, conflict monitoring, and exploitation versus exploration. In: Posner MI, editor. *Cognitive neuroscience of attention*. New York: Guilford Press; 2004. p. 71–90.
- Colzato LS, Slagter HA, Spapé MM, Hommel B. Blinks of the eye predict blinks of the mind. *Neuropsychologia* 2008; 46: 3179-83.
- Counts SE, Mufson EJ. Noradrenaline activation of neurotrophic pathways protects against neuronal amyloid toxicity. *J Neurochem* 2010; 113: 649-60.
- Crawford JR, Garthwaite PH. Comparing patients' predicted test scores from a regression equation with their obtained scores: a significance test and point estimate of abnormality with accompanying confidence limits. *Neuropsychology* 2006; 20: 259-71.
- Crawford JR, Howell DC. Comparing an individual's test score against norms derived from small samples. *Clin Neuropsychol* 1998; 12: 482-86.

- Cubells JF, Zabetian CP. Human genetics of plasma dopamine beta-hydroxylase activity: applications to research in psychiatry and neurology. *Psychopharmacology (Berl)* 2004; 174: 463-76.
- Dayan P, Yu AJ. Phasic norepinephrine: a neural interrupt signal for unexpected events. *Network* 2006; 17: 335-50.
- De Martino B, Strange BA, Dolan RJ. Noradrenergic neuromodulation of human attention for emotional and neutral stimuli. *Psychopharmacology (Berl)* 2008; 197: 127-36.
- Erez A, Li J, Geraghty MT, Ben-Shachar S, Cooper ML, Mensing DE, et al. Mosaic deletion 11p13 in a child with dopamine beta-hydroxylase deficiency--case report and review of the literature. [Review]. *Am J Med Genet A* 2010; 152A: 732-6.
- Deinum J, Steenbergen-Spanjers GC, Jansen M, Boomsma F, Lenders JW, van Ittersum FJ, et al. DBH gene variants that cause low plasma dopamine beta hydroxylase with or without a severe orthostatic syndrome. *J Med Genet* 2004; 41: e38.
- Dolcos F, McCarthy G. Brain systems mediating cognitive interference by emotional distraction. *J Neurosci* 2006; 26: 2072-9.
- Goldstein DS. L-Dihydroxyphenylserine (L-DOPS): a norepinephrine prodrug. [Review]. *Cardiovasc Drug Rev* 2006; 24: 189-203.
- Greene CM, Bellgrove MA, Gill M, Robertson IH. Noradrenergic genotype predicts lapses in sustained attention. *Neuropsychologia* 2009; 47: 591-4.
- Greenwood PM, Fossella JA, Parasuraman R. Specificity of the effect of a nicotinic receptor polymorphism on individual differences in visuospatial attention. *J Cogn Neurosci* 2005; 17: 1611-20.
- Hess EH, Polt JM. Pupil Size in Relation to Mental Activity during Simple Problem-Solving. *Science* 1964; 143: 1190-2.

- Hobson JA, Lydic R, Bahdoyan HA. Evolving concepts of sleep cycle generation: from brain centers to neuronal population. *Behav Brain Sci* 1986; 9: 371-448.
- Hoffman BB, Taylor P. Neurotransmission: the autonomic and somatic motor nervous system. In: Hardman JG, Limbird LE, Molinoff PB, Gilman AG, editors. *Goodman & Gilman's the Pharmacological Basis of Therapeutics*. New York: McGraw-Hill; 2001. p 115–53.
- Hommel B, Akyürek EG. Lag-1 sparing in the attentional blink: benefits and costs of integrating two events into a single episode. *Q J Exp Psychol A* 2005; 58: 1415-33.
- Ishikawa Y, Kato Y, Murakami Y, Inoue T, Koshiyama H, Imura H. Effect of L-threo-3,4-dihydroxyphenylserine (L-DOPS) on catecholamine levels in plasma and cerebrospinal fluid (CSF) in anesthetized rats. *Proc Soc Exp Biol Med* 1987; 184: 197-200.
- Jouvet M. Biogenic amines and the states of sleep. *Science* 1969; 163: 32-41.
- Kahneman D. *Attention and Effort*. Englewood Cliffs, NJ: Prentice-Hall; 1973.
- Kalinin S, Gavrilyuk V, Polak PE, Vasser R, Zhao J, Heneka MT, et al. Noradrenaline deficiency in brain increases beta-amyloid plaque burden in an animal model of Alzheimer's disease. *Neurobiol Aging* 2007; 28: 1206-14.
- Kato T, Karai N, Katsuyama M, Nakamura M, Katsube J. Studies on the activity of L-threo-3,4-dihydroxyphenylserine (L-DOPS) as a catecholamine precursor in the brain. Comparison with that of L-dopa. *Biochem Pharmacol* 1987a; 36: 3051-7.
- Kato T, Katsuyama M, Karai N, Nakamura M, Katsube J. Studies on the central action of L-threo-3,4-dihydroxyphenyl-serine (L-threo-DOPS) in FLA-63-treated mice. *Pharmacol Biochem Behav* 1987b; 26: 407-11.

- Liu J, Kiehl KA, Pearlson G, Perrone-Bizzozero NI, Eichele T, Calhoun VD. Genetic determinants of target and novelty-related event-related potentials in the auditory oddball response. *Neuroimage* 2009; 46: 809-16.
- Maclean MH, Arnell KM. Personality predicts temporal attention costs in the attentional blink paradigm. *Psychon Bull Rev* 2010; 17:556-62.
- Madrigal JL, Kalinin S, Richardson JC, Feinstein DL. Neuroprotective actions of noradrenaline: effects on glutathione synthesis and activation of peroxisome proliferator activated receptor delta. *J Neurochem* 2007; 103: 2092–2101.
- Madrigal JL, Leza JC, Polak P, Kalinin S, Feinstein DL. Astrocyte-derived MCP-1 mediates neuroprotective effects of noradrenaline. *J Neurosci* 2009; 29: 263-267.
- Man in 't Veld AJ, Boomsma F, Moleman P, Schalekamp MA. Congenital dopamine-beta hydroxylase deficiency. A novel orthostatic syndrome. *Lancet* 1987a; 1: 183-8.
- Man in 't Veld AJ, Boomsma F, van den Meiracker AH, Schalekamp MA. Effect of unnatural noradrenaline precursor on sympathetic control and orthostatic hypotension in dopamine-beta-hydroxylase deficiency. *Lancet* 1987b; 2: 1172-5.
- Marino MD, Bourdélát-Parks BN, Cameron Liles L, Weinshenker D. Genetic reduction of noradrenergic function alters social memory and reduces aggression in mice. *Behav Brain Res.* 2005; 161: 197-203.
- Martens S, Wyble B. The attentional blink: past, present, and future of a blind spot in perceptual awareness. [Review]. *Neurosci Biobehav Rev* 2010; 34: 947-57.
- Mathias CJ, Bannister RB, Cortelli P, Heslop K, Polak JM, Raimbach S, et al. Clinical, autonomic and therapeutic observations in two siblings with postural hypotension and sympathetic failure due

to an inability to synthesize noradrenaline from dopamine because of a deficiency of dopamine beta hydroxylase. *Q J Med* 1990; 75: 617-33.

Murchison CF, Zhang XY, Zhang WP, Ouyang M, Lee A, Thomas SA. A distinct role for norepinephrine in memory retrieval. *Cell* 2004; 117: 131-43.

Nieuwenhuis S, Gilzenrat MS, Holmes BD, Cohen JD. The role of the locus coeruleus in mediating the attentional blink: a neurocomputational theory. *J Exp Psychol Gen* 2005a; 134: 291-307.

Nieuwenhuis S, Aston-Jones G, Cohen JD. Decision making, the P3, and the locus coeruleus norepinephrine system. [Review]. *Psychol Bull* 2005b; 131: 510-32.

Nieuwenhuis S, van Nieuwpoort IC, Veltman DJ, Drent ML. Effects of the noradrenergic agonist clonidine on temporal and spatial attention. *Psychopharmacology (Berl)* 2007; 193: 261-9.

Oei NY, Tollenaar MS, Elzinga BM, Spinhoven P. Propranolol reduces emotional distraction in working memory: a partial mediating role of propranolol-induced cortisol increases? *Neurobiol Learn Mem* 2010; 93: 388-95.

Oei NY, Tollenaar MS, Spinhoven P, Elzinga BM. Hydrocortisone reduces emotional distracter interference in working memory. *Psychoneuroendocrinology* 2009; 34: 1284-93.

Parasuraman R, Greenwood PM, Kumar R, Fossella J. Beyond heritability: neurotransmitter genes differentially modulate visuospatial attention and working memory. *Psychol Sci* 2005; 16: 200-7.

Peeters FPML, Ponds RWHM, Vermeeren MTG. Affectivity and self-report of depression and anxiety (Dutch). *Tijdschr Psych* 1996; 38: 240-50.

Pineda JA, Foote SL, Neville HJ. Effects of locus coeruleus lesions on auditory, long-latency, event-related potentials in monkey. *J Neurosci* 1989; 9: 81-93.

- Raven JC, Court JH, Raven J. Manual for Raven's progressive matrices and vocabulary scales: Section 3 Standard progressive matrices. London: Lewis; 1988.
- Raymond JE, Shapiro KL, Arnell KM. Temporary suppression of visual processing in an RSVP task: an attentional blink? *J Exp Psychol Hum Percept Perform* 1992; 18: 849-60.
- Ressler KJ, Nemeroff CB. Role of norepinephrine in the pathophysiology of neuropsychiatric disorders. *CNS Spectr* 2001; 6: 663-6.
- Robbins TW. Arousal systems and attentional processes. [Review]. *Biol Psychol* 1997; 45: 57-71.
- Robbins TW, Arnsten AF. The neuropsychopharmacology of fronto-executive function: monoaminergic modulation. [Review]. *Annu Rev Neurosci* 2009; 32: 267-87.
- Robertson D, Garland EM. Dopamine Beta-Hydroxylase Deficiency. *GeneReviews* 2010.
<http://www.ncbi.nlm.nih.gov/books/NBK1474/>
- Robertson D, Goldberg MR, Onrot J, Hollister AS, Wiley R, Thompson JG Jr, et al. Isolated failure of autonomic noradrenergic neurotransmission. Evidence for impaired beta-hydroxylation of dopamine. *N Engl J Med*. 1986; 314: 1494-7.
- Robertson D, Haile V, Perry SE, Robertson RM, Phillips JA, III, Biaggioni I. Dopamine beta-hydroxylase deficiency. A genetic disorder of cardiovascular regulation. *Hypertension* 1991; 18:1-8.
- Roman T, Schmitz M, Polanczyk GV, Eizirik M, Rohde LA, Hutz MH. Further evidence for the association between attention-deficit/hyperactivity disorder and the dopamine-beta-hydroxylase gene. *Am J Med Genet* 2002; 114: 154-8.
- Roth WT, Dorato KH, Kopell BS. Intensity and task effects on evoked physiological responses to noise bursts. *Psychophysiology* 1984; 21: 466-81.

- Sara SJ. The locus coeruleus and noradrenergic modulation of cognition. [Review]. *Nat Rev Neurosci* 2009; 10: 211-23.
- Semba J, Takahashi R. The effects of L-threo-dihydroxyphenylserine on norepinephrine metabolism in rat brain. *Psychiatry Res* 1985; 15: 319-26.
- Servan-Schreiber D, Printz H, Cohen JD. A network model of catecholamine effects: gain, signal-to-noise ratio, and behavior. *Science* 1990; 249: 892-5.
- Shapiro KL, Caldwell J, Sorensen RE. Personal names and the attentional blink: a visual "cocktail party" effect. *J Exp Psychol Hum Percept Perform* 1997; 23: 504-14.
- Siever LJ, Davis KL. Overview: toward a dysregulation hypothesis of depression. *Am J Psychiatry* 1985; 142: 1017-31.
- Skinbjerg M, Seneca N, Liow JS, Hong J, Weinshenker D, Pike VW, et al. Dopamine beta-hydroxylase-deficient mice have normal densities of D(2) dopamine receptors in the high-affinity state based on in vivo PET imaging and in vitro radioligand binding. *Synapse* 2010; 64: 699-703.
- Smith SA, Smith SE. Bilateral Horner's syndrome: detection and occurrence. *J Neurol Neurosurg Psychiatry* 1999; 66: 48-51.
- Strange BA, Dolan RJ. Beta-adrenergic modulation of emotional memory-evoked human amygdala and hippocampal responses. *Proc Natl Acad Sci U S A*. 2004; 101: 11454-8.
- Strange BA, Hurlmann R, Dolan RJ. An emotion-induced retrograde amnesia in humans is amygdala- and beta-adrenergic-dependent. *Proc Natl Acad Sci U S A*. 2003; 100: 13626-31.
- Sutton S, Braren M, Zubin J, John ER. Evoked-potential correlates of stimulus uncertainty. *Science* 1965; 150: 1187-8.

- Thomas SA, Marck BT, Palmiter RD, Matsumoto AM. Restoration of norepinephrine and reversal of phenotypes in mice lacking dopamine beta-hydroxylase. *J Neurochem* 1998; 70: 2468-76.
- Thomas SA, Matsumoto AM, Palmiter RD. Noradrenaline is essential for mouse fetal development. *Nature* 1995; 374: 643-6.
- Thomas SA, Palmiter RD. Disruption of the dopamine beta-hydroxylase gene in mice suggests roles for norepinephrine in motor function, learning, and memory. *Behav Neurosci* 1997a; 111: 579-89.
- Thomas SA, Palmiter RD. Impaired maternal behavior in mice lacking norepinephrine and epinephrine. *Cell*. 1997b; 91: 583-92.
- Thompson JM, O'Callaghan CJ, Kingwell BA, Lambert GW, Jennings GL, Esler MD. Total norepinephrine spillover, muscle sympathetic nerve activity and heart-rate spectral analysis in a patient with dopamine beta-hydroxylase deficiency. *J Auton Nerv Syst*. 1995;55:198-206.
- Timmers HJ, Deinum J, Wevers RA, Lenders JW. Congenital dopamine-beta-hydroxylase deficiency in humans. [Review]. *Ann N Y Acad Sci* 2004; 1018: 520-3.
- Tulen JH, Man in 't Veld AJ, Dzoljic MR, Mechelse K, Moleman P. Sleeping with and without norepinephrine: effects of metoclopramide and D,L-threo-3,4-dihydroxyphenylserine on sleep in dopamine beta-hydroxylase deficiency. *Sleep* 1991; 14: 32-8.
- Tulen JH, Man in't Veld AJ, Mechelse K, Boomsma F. Sleep patterns in congenital dopamine beta-hydroxylase deficiency. *J Neurol* 1990; 237: 98-102.
- Usher M, Cohen JD, Servan-Schreiber D, Rajkowski J, Aston-Jones G. The role of locus coeruleus in the regulation of cognitive performance. *Science* 1999; 283: 549-54.
- Warren CM, Breuer AT, Kantner J, Fiset D, Blais C, Masson ME. Target-distractor interference in the attentional blink implicates the locus coeruleus-norepinephrine system. *Psychon Bull Rev* 2009; 16: 1106-11.

- Watson D, Clark LA, Tellegen A. Development and validation of brief measures of positive and negative affect: the PANAS scales. *J Pers Soc Psychol* 1988; 54: 1063-70.
- Wechsler D. Wechsler Adult Intelligence Scale-III. San Antonio, TX: The Psychological Corporation; 1997.
- Zhang W, Klimek V, Farley JT, Zhu MY, Ordway GA. Alpha₂C adrenoceptors inhibit adenylyl cyclase in mouse striatum: potential activation by dopamine. *J Pharmacol Exp Ther* 1999; 289: 1286-92.
- Zhang WP, Ouyang M, Thomas SA. Potency of catecholamines and other L-tyrosine derivatives at the cloned mouse adrenergic receptors. *Neuropharmacology* 2004; 47: 438-49.

Titles and legends to figures

Figure 1. Average emotional-interference effect (i.e., RT on trials with emotional relative to neutral distractors) for the control group and the patient group OFF and ON medication, as a function of target presence (error bars are standard errors of the means). Because session did not interact with distractor type or target presence in the control group, the results from the control group are averaged across the two sessions.

Figure 2. Average T1 and T2 identification accuracy in the attentional-blink task for the control group and the patient group, as a function of lag and session (error bars are standard errors of the means).

Trials on which T1 and T2 were accurately identified but in the wrong order were treated as correct. As is usual, T2 accuracy is reported contingent on accurate identification of T1.

Figure 3. Average visual-search slopes for the control group and the patient group, as a function of target presence and session (error bars are standard errors of the means).

Figure 4. Grand-average waveforms for electrode Pz for the control group and the patient group, time-locked to the onset of the target and standard stimuli, in the auditory and visual oddball tasks. Because P3 amplitude in the control group did not differ across sessions [$F(1, 9) = 0.1, p = 0.72$], the data for the control participants are averaged across the two sessions.

Figure 5. P3 amplitudes for the control participants and the patients in the auditory and visual oddball task. The bold lines indicate the grand average amplitudes, and the thinner lines and points indicate the amplitudes of each individual participant. Because there was no effect of session in the control group, the data for the control participants are averaged across the two sessions.

Figure 6. Time course of the grand-average pupil dilations in response to the comparison tone, for the control group and the patient group ON and OFF medication.

Table 1. Demographic details of the control group and the patient group (means \pm standard deviations)

	Control group (N = 10)	Patient group (N = 5)
Age (years)	24.6 \pm 11.0	24.4 \pm 10.0
Sex (proportion female)	6/10	3/5
Interval between test sessions (days)	7.5 \pm 3.2	7.6 \pm 2.7
Scaled WAIS-III vocabulary score	8.6 \pm 2.3	11.4 \pm 3.4
Raven's SPM score	44.5 \pm 6.9	45.6 \pm 4.6
Estimated IQ (based on SPM score)	106.5 \pm 11.1	107.2 \pm 8.6

Notes: WAIS = Wechsler Adult Intelligence Scale, highest possible scaled vocabulary score = 19; SPM = standard progressive matrices, highest possible score = 66.

Table 2. Plasma and urine catecholamine concentrations in the control group and the patient group OFF and ON medication (means \pm standard deviations).

	Healthy controls ⁺	Patients OFF	Patients ON
Plasma NE	1.46 \pm 0.45	0.10 \pm 0.12	0.57 \pm 0.13
Urine NE	-	5.50 \pm 5.40	9682 \pm 4839
Plasma DA	0.06 \pm 0.02	1.28 \pm 1.43	0.40 \pm 0.40
Urine DA	-	1271 \pm 903	793 \pm 379

Notes: ⁺ plasma concentrations were determined for 6 control participants; OFF = off medication; ON = on DOPS medication; all concentrations are in nmol/l; see Supplementary Table 2 for the catecholamine concentrations of the individual patients and missing data.

Table 3. Whole-brain volume and percentage of grey matter, white matter and cerebrospinal fluid for the control group and the patient group, separately for the male and female participants (means \pm standard deviations).

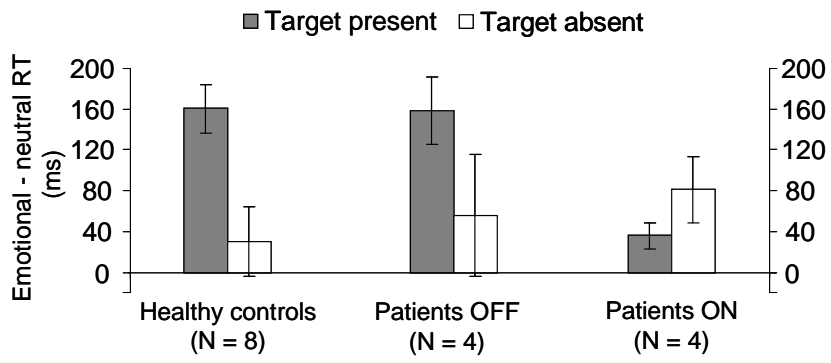
	Control group		Patient group	
	Men (N = 4)	Women (N = 5)	Men (N = 2)	Women (N = 3)
Brain volume (dm ³)	1.72 \pm 0.05	1.46 \pm 0.05	1.51 \pm 0.06	1.30 \pm 0.11
% grey matter	47.2 \pm 0.7	44.1 \pm 1.8	47.0 \pm 1.5	44.7 \pm 3.2
% white matter	38.7 \pm 1.2	39.3 \pm 2.0	38.5 \pm 0.5	38.9 \pm 2.2
% CSF	14.1 \pm 1.7	16.5 \pm 2.4	14.5 \pm 1.0	16.4 \pm 1.4

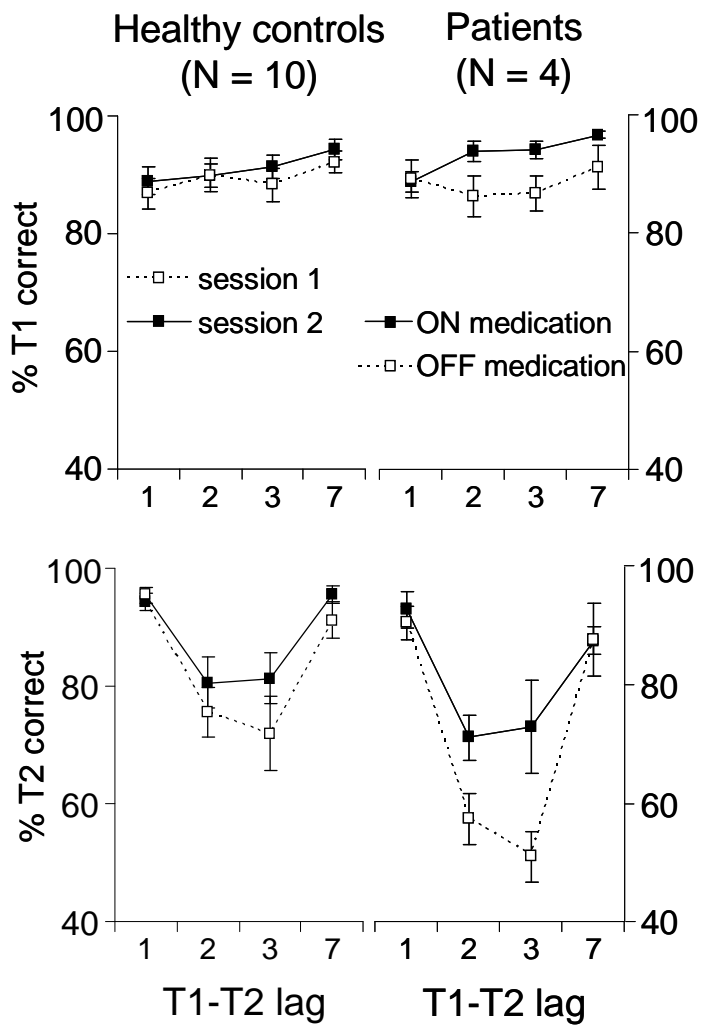
Notes: we did not collect MRI data from one female control participant; CSF = cerebrospinal fluid

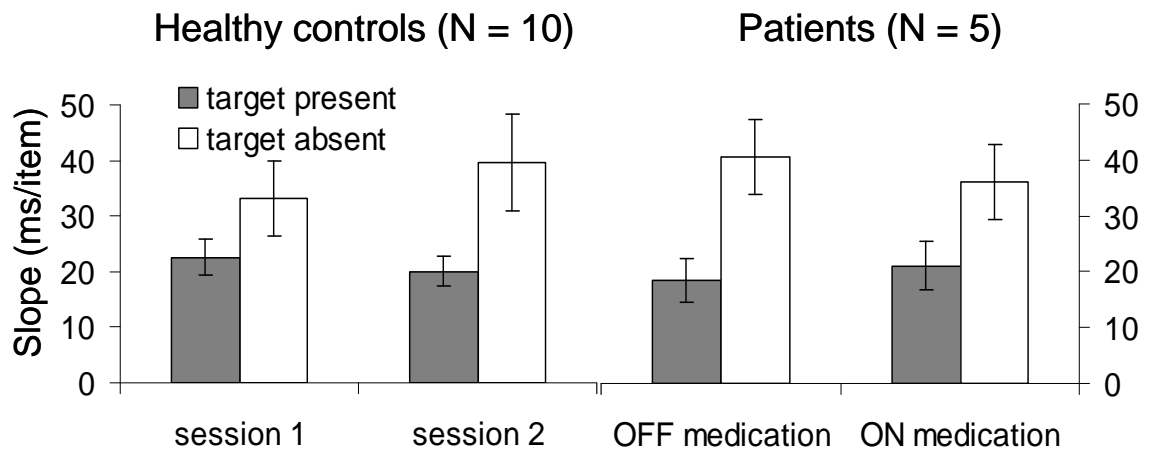
Table 4. For each critical effect/measure, the p value reflecting the significance of the difference between each patient's OFF medication score and the average score of the control group (Crawford and Howell, 1998), and the p value indicating the significance of the deviation of each patient's medication effect from the control group's practice effect (Crawford and Garthwaite, 2006). p values < 0.05 , which indicate that the estimated percentage of the normal population that would show a more extreme effect is smaller than 5%, are bold-faced.

Patient OFF medication vs. control group	patient				
	1	2	3	4	5
Emotional-interference effect on RT in target-present trials	-	0.44	0.25	0.29	0.41
Attentional-blink size	0.051	-	0.19	0.10	0.38
Visual search efficiency in target-present trials	0.36	0.15	0.14	0.15	0.41
Visual search efficiency in target-absent trials	0.41	0.23	0.36	0.24	0.50
P3 amplitude auditory oddball task	0.10	0.34	0.16	0.09	0.04
P3 amplitude visual oddball task	0.27	0.32	0.13	0.048	0.01
Baseline pupil diameter	-	0.03	0.45	0.22	0.002⁺
Pupil dilation response	-	0.03	0.003	0.21	0.001
Brain volume (dm ³)	0.29	0.006	0.03	0.01	0.02
% grey matter	0.46	0.16	0.16	0.10	0.053
% white matter	0.33	0.39	0.33	0.46	0.12
% cerebrospinal fluid	0.39	0.30	0.45	0.30	0.35
Patient's medication effect vs. control group's practice effect	1	2	3	4	5
Emotional-interference effect on RT in target-present trials	-	0.19	0.09	0.18	0.19
Attentional-blink size	0.045	-	0.003	0.049	0.24
Visual search efficiency in target-present trials	0.45	0.28	0.28	0.28	0.39
Visual search efficiency in target-absent trials	0.22	0.11	0.18	0.50	0.16
P3 amplitude auditory oddball task	0.19	0.44	0.41	0.38	0.19
P3 amplitude visual oddball task	0.21	0.27	0.29	0.36	0.35
Baseline pupil diameter	-	0.25	0.20	0.003	0.21
Pupil dilation response	-	0.34	0.03	0.04	0.08

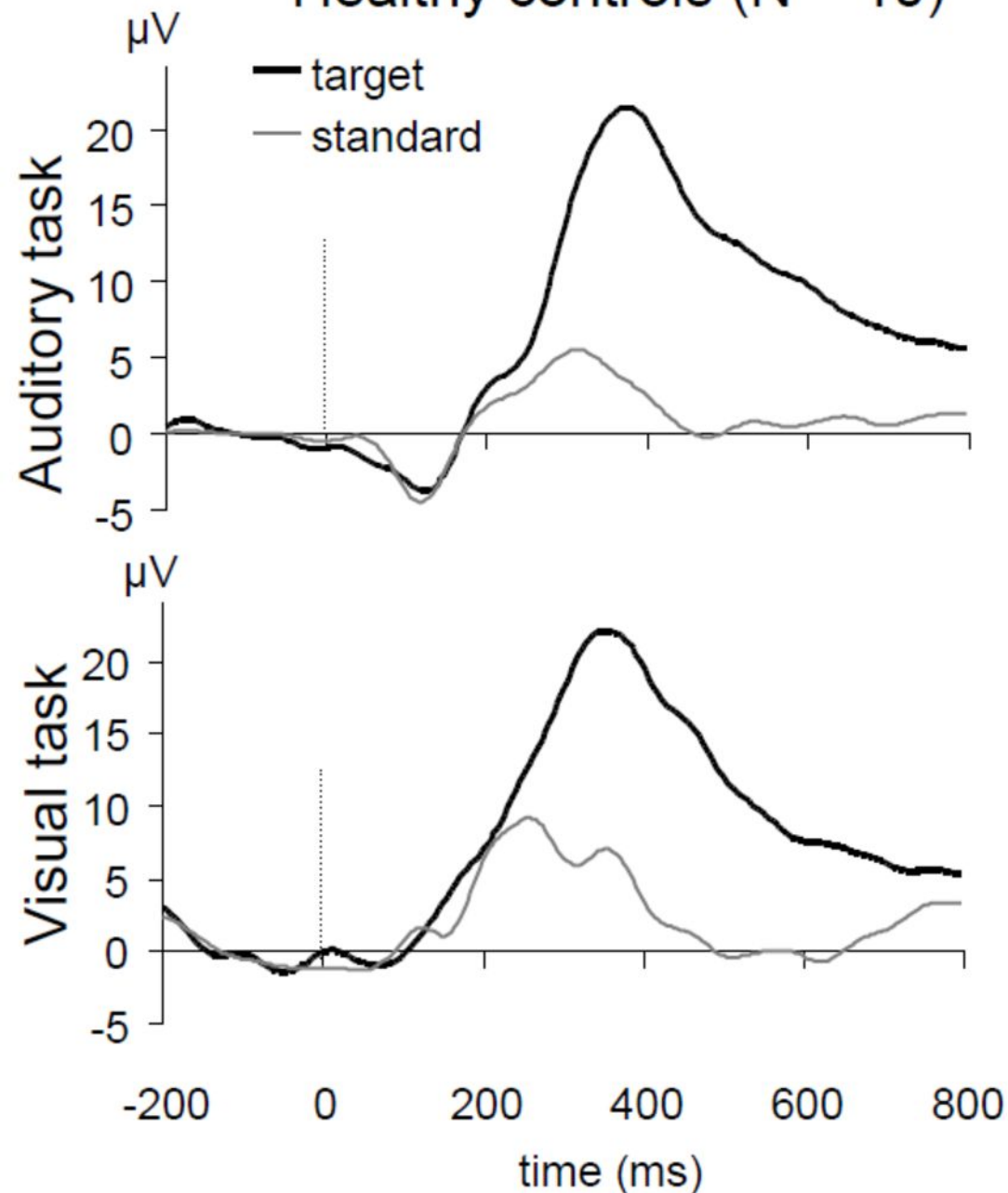
- = no data were collected; ⁺ this patient had significantly larger pupils than the control group, which was due to a genetic defect unrelated to DBH deficiency: a mosaic deletion at chromosome 11p13 (Erez et al., 2010)



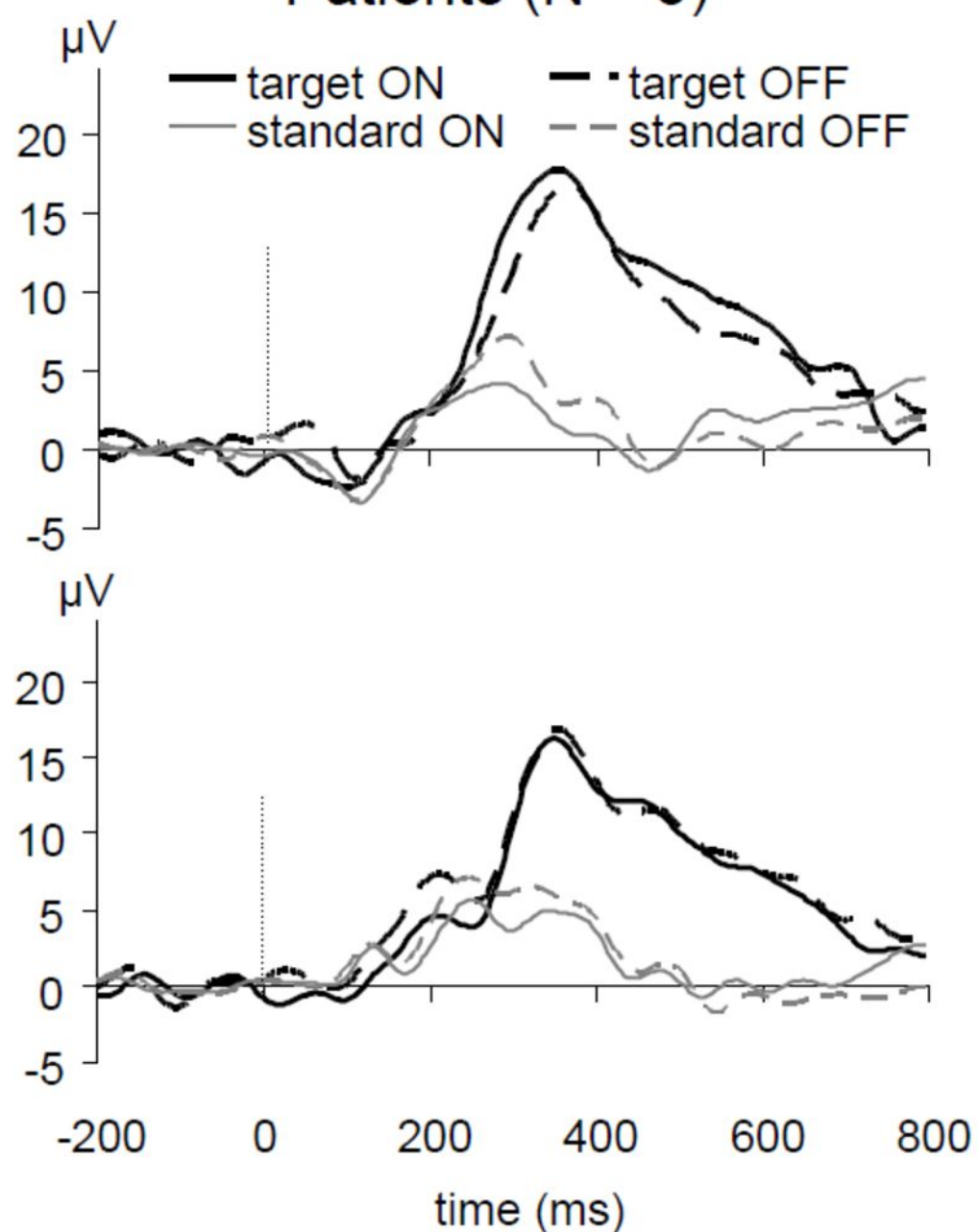




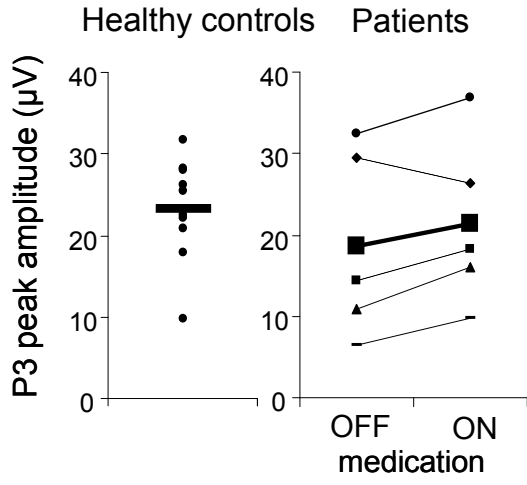
Healthy controls (N = 10)



Patients (N = 5)



Auditory oddball task



Visual oddball task

