



HAL
open science

Autophagy and BiP Level Decrease are Early Key Events in Retrograde Degeneration of Motoneurons

Caty Casas, Clara Penas, Mirian Font, Valerie Petegnief, Anna Planas,
Joaquim Fores, Xavier Navarro

► **To cite this version:**

Caty Casas, Clara Penas, Mirian Font, Valerie Petegnief, Anna Planas, et al.. Autophagy and BiP Level Decrease are Early Key Events in Retrograde Degeneration of Motoneurons. *Cell Death and Differentiation*, 2011, 10.1038/cdd.2011.24 . hal-00626283

HAL Id: hal-00626283

<https://hal.science/hal-00626283>

Submitted on 25 Sep 2011

HAL is a multi-disciplinary open access archive for the deposit and dissemination of scientific research documents, whether they are published or not. The documents may come from teaching and research institutions in France or abroad, or from public or private research centers.

L'archive ouverte pluridisciplinaire **HAL**, est destinée au dépôt et à la diffusion de documents scientifiques de niveau recherche, publiés ou non, émanant des établissements d'enseignement et de recherche français ou étrangers, des laboratoires publics ou privés.

Autophagy, and BiP Level Decrease are Early Key Events in Retrograde Degeneration of Motoneurons

Running title: BiP downregulation is relevant in motoneuron degeneration

Authors: Clara Penas¹, Miriam Font-Nieves², Joaquim Forés³, Valérie Petegnief², Anna Planas², Xavier Navarro¹, Caty Casas¹

Affiliations: ¹ Group of Neuroplasticity and Regeneration, Institute of Neurosciences, Department of Cell Biology, Physiology and Immunology, Universitat Autònoma de Barcelona, and Centro de Investigación Biomédica en Red sobre Enfermedades Neurodegenerativas (CIBERNED), Spain. ²Department of Brain Ischemia and Neurodegeneration, Institute for Biomedical Research of Barcelona (IIBB), Spanish Research Council (CSIC), Institut d'Investigacions Biomèdiques August Pi Sunyer (IDIBAPS), Barcelona, Spain. ³Hand and Peripheral Nerve Unit, Hospital Clínic i Provincial, Universitat de Barcelona, Barcelona, Spain.

Corresponding author: Caty Casas Louzao, Unitat de Fisiologia Mèdica, Edif. M, Universitat Autònoma de Barcelona, E-08193 Bellaterra, Spain.

Tel: +34-935811966, Fax: +34-935812986, E-mail: Caty.Casas@uab.cat

ABSTRACT

Disconnection of the axon from the soma of spinal motoneurons (MNs) leads either to a retrograde degenerative process or to a regenerative reaction, depending on the severity and the proximity to the soma of the axonal lesion. The endoplasmic reticulum (ER) is a continuous membranous network that extends from the nucleus to the entire cytoplasm of the neuronal soma, axon and dendrites. We investigated whether axonal injury is sensed by the ER and triggers the activation of protective mechanisms, such as the unfolded protein response (UPR) and autophagy. We found early (at 3 days) accumulation of beclin1, LC3II and Lamp-1, hallmarks of autophagy, in both degenerating MNs after spinal root avulsion and in non-degenerating MNs after distal nerve section, although Lamp-1 disappeared by 5 days only in the former. In contrast, only degenerating MNs presented early activation of IRE1 α , revealed by an increase of the spliced isoform of *Xbp1* and accumulation of ATF4 in their nucleus, two branches of the UPR, and late BiP downregulation in association with cytoskeletal and organelle disorganization. We conclude that BiP-decrease is a signature of the degenerating process since its overexpression led to an increase in MN survival after root avulsion. Besides, Bcl2 is strongly implicated in the survival pathway activated by BiP overexpression.

Keywords: spinal root avulsion, axotomy, motoneuron, neurodegeneration, apoptosis, lysosome, endoplasmic reticulum stress, autophagy, UPR, golgi fragmentation.

Abbreviations: ATF4, activating transcription factor 4; ATF6 α , activating transcription factor 6 alpha; BAD, Bcl-2-associated death promoter; BiP, immunoglobulin heavy chain-binding protein; ChAT, choline acetyltransferase; Grp78, glucose-regulated protein; eIF2 α , eukaryotic translation initiation factor 2a; ER, endoplasmic reticulum; ERAD, ER-associated protein degradation; GADD153/CHOP, growth arrest- and DNA damage-inducible gene; GFAP, glial fibrillar acidic protein; IRE1 α , inositol-requiring protein-1 alpha; LC3 microtubule associated protein 1 light chain 3; IB4, isolectin B4; MN, motoneuron; PERK, PRK (RNA-dependent protein kinase)-like ER kinase; UPR, unfolded protein response; XBP-1, X-box binding protein-1

INTRODUCTION

The mechanisms involved in degeneration and regeneration of adult spinal motoneurons (MNs) following axotomy and target deprivation are still poorly understood. Peripheral nerve injuries produce the disconnection and subsequent degeneration of the distal axon from the body of damaged neurons. The soma of axotomized neurons undergoes a series of phenotypic changes termed 'chromatolysis', which arise from dispersal of large Nissl bodies due to disintegration of stacked rough endoplasmic reticulum.¹ The accompanying metabolic changes are necessary for axonal regeneration, but the mechanisms involved in the neuronal reaction remain partially unknown.² However, in some instances the neuron is unable to survive the axotomy, particularly when the lesion is produced at sites near to the neuronal soma. Thus, after distal axotomy a non-significant loss of motoneurons has been found,³ whereas lesions at the spinal root, due to traction or avulsion, in the adult lead to progressive and marked loss of the axotomized MNs.^{4,5} There exist controversial studies about the processes that lead to this MN degeneration; some authors claimed that it is mainly an apoptotic process⁴ whereas others pointed to a rather necrotic death.^{6,7} Axotomy produces an initial rupture of the plasma membrane which leads to calcium influx⁸ and disassembly of the cytoskeleton, triggering long lasting electrophysiological disturbances involving the entire neuron.⁹ Besides, axotomy interrupts retrograde axonal transport of target-derived trophic factors to the neuronal perikarya. The lack of these trophic factors in turn initiates the cell responses of neurons and surrounding glia after axotomy.¹⁰

The endoplasmic reticulum (ER) is a dynamic network of interconnected membrane tubules that essentially reaches every part of the cell, including dendrites¹¹ and axons¹² in neurons. ER is associated with microtubules¹³ and largely contributes to local

calcium homeostasis and signalling, and protein and lipid biosynthesis. Thus, the ER may be one of the main organelles that sense the rupture of the axon and react sending back information to the soma. Disturbances in calcium homeostasis may lead to ER stress that produces accumulation of unfolded or misfolded proteins in the ER lumen,¹⁴ that takes place in several neurodegenerative events.^{15,16} ER stress leads to the activation of self-protective mechanisms that include the ER-associated protein degradation (ERAD) pathway,¹⁷ the unfolded protein response (UPR), and autophagy to avoid cell damage, although under conditions of severe ER stress it may activate cell death programs as well.¹⁸ The UPR is triggered by BiP, a reticulum-resident chaperone, when unbound from three major effectors:¹⁹ the RNA-activated protein kinase-like ER kinase (PERK), inositol-requiring protein-1 alpha (IRE1 α), and activating transcription factor-6 alpha (ATF6 α).²⁰ In addition, ER stress could also induce macroautophagy (referred hereafter as autophagy) activation.²¹⁻²³ Autophagy is a non-stop life-sustaining renewal process that is active under normal conditions and is further enhanced in response to tissue injury. It involves the formation of double membrane cisternae, which engulf cytoplasmic materials or whole organelles to become vacuoles called autophagosomes that fuse with lysosomes for degrading its content.²⁴ During the formation of autophagosomal membranes, cytosolic microtubule-associated protein light chain 3 (LC3I) is conjugated to phosphatidylethanolamine,²⁵ to convert to a membrane bound protein, LC3-II, becoming a structural component of the double-membrane cisterns or autophagosomes. Beclin-1 is required for autophagy initiation of cytoplasmic proteins under starvation conditions. Both Beclin-1 and LC3II are considered hallmarks of autophagy initiation and propagation.²⁶ BiP is also required for stress-induced autophagy.²⁷ In cells in which BiP expression is knocked down, despite

spontaneous activation of UPR pathways and LC3 conversion, autophagy is blocked and the ER is massively expanded and disorganized.²⁷

In the present work, we aimed to investigate whether ER stress and autophagy are involved in the degeneration of MNs after spinal root avulsion, and compared this lesion with a distal nerve injury that does not produce MN degeneration.

RESULTS

Degenerating motoneurons accumulate ATF4 early after root avulsion

We investigated the presence of ER stress markers in degenerating MNs after root avulsion by analyzing which of the three branches of the UPR were activated. One branch is mediated by ATF6 α (90KDa), a ER resident protein that, when unbound to BiP due to ER stress, is cleaved in the Golgi apparatus and shed a 50 kDa fragment.¹⁹ We did not detect any cleavage of ATF6 α in the ventral horns of the L4-L5 segments in the avulsed or the axotomized spinal cords at any time tested (Fig. 1). A second branch of the UPR is mediated by PERK, whose activation inhibits the translation initiation factor eIF2 α by phosphorylation, thereby reducing protein synthesis.¹⁹ One exception is the transcription factor ATF4 that escapes from the global shut-down translation promoted by eIF2 α phosphorylation.²⁰ Although we did not observe the presence of phosphorylated eIF2 α at any time after lesion (Fig. 1), we found an increase in ATF4 immunoreactivity in MNs at both sides of the ventral horn from 3 dpo and with maximal expression at 5 dpo after root avulsion (Fig. 1, bottom). In contrast, such increase was not observed after distal sciatic nerve lesion (Fig. 1). To further characterize this pathway, we looked for the presence of the pro-apoptotic factor CHOP, whose coding gene is a main target of ATF4. No significant differences were detected regarding the transcript or protein levels of *Chop* in the avulsed ventral horns from 3 dpo, by quantitative real time PCR, western blot and immunohistochemistry (Fig. 2). Besides, we did not find signs of apoptotic activation, neither caspase 12 or caspase 3 activation nor TUNEL positive staining in MNs (Fig. 2), in spite that at 7 days post avulsion there is loss of more than 25% of the MNs.⁵

In summary, these results showed that ATF4 protein levels differentially rose in the nucleus of degenerating versus non-degenerating MNs after axotomy. However, this increase did not correlate with CHOP protein accumulation and was not accompanied by signs of apoptosis in the degenerating MNs.

IRE1 α -XBP1 pathway is differentially activated in avulsed vs axotomized MNs

The third branch of the UPR is mediated through the activation of the ribonuclease activity of IRE1 α that generates a non-conventional processing of the transcript of *Xbp1* in the cytoplasm. Once processed, the open reading frame of *Xbp1* changes and is translated to an active form of a transcription factor (XBP1s, 50KDa), which can bind to several UPR response elements.²⁰ The non-processed form (XBP1u) can act as a negative regulator of XBP1s.³¹ We found an increase of XBP1s after root avulsion but an increase of XBP1u after distal nerve lesion, producing that the ratio XBP1s/XBP1u increased significantly in the root avulsed ventral horn at 3 dpo in comparison to the nerve distal axotomy model (Fig. 3, top). The immunohistochemical analysis performed with an anti-panXBP1 revealed that the factor was localized into the nucleus of MNs at the ipsilateral ventral horn of the spinal cord in both models from 3 dpo and thus independently of the isoform up-regulated (Fig. 3, bottom).

These results suggested that root avulsion produces an activation of the ribonuclease activity of IRE1 α , leading to an increase of XBP1s. In contrast, although XBP1u levels increase following distal axotomy/reconnection and nuclearized in MNs, there was not activation of IRE1 α in non-degenerating MNs.

BiP levels are distinctly reduced in degenerating *versus* non-degenerating motoneurons

We analyzed BiP levels by Western blot, since they are crucial to activate the self-protecting mechanisms of UPR and autophagy.²⁷ BiP levels **BiP levels remained statistically unchanged after root avulsion** (Fig. 4a). In contrast, in the distally axotomized spinal cords, BiP protein levels increased with a maximum at 5 dpo in both sides of the ventral horn (3.4 ± 0.2 fold) (Fig. 4a). By immunohistochemical analysis, we observed that in degenerating MNs, BiP presented the normal ER localization until 5 dpo, and later on it progressively disappeared as shown in figure 4B. In contrast, in non-degenerating MNs of the distal axotomy model, BiP presented a normal localization at all time-points analyzed (Fig. 4b). Therefore, it seems that there is a marked and specific difference between degenerating and non-degenerating MNs regarding BiP downregulation around 5-7 days postlesion which is hardly detected by western blot probably due to its sustained expression in glial cells.

In addition to BiP, we analyzed the Bcl-2 family of proteins that are considered critical in the regulation of ER functions as well as in the transmission of the apoptotic signal from the ER to the mitochondria during ER stress.³² We found that Bcl-2 was transiently reduced in non-degenerating MNs around 5 dpo, but permanently reduced in degenerating MNs after root avulsion (Fig. 4b).

Degenerating MNs have disordered organelles and microtubule disassembly

Since labelling of BiP and caspase 12, two ER proteins, disappeared by 5-7 dpo, we analyzed the organelles of the secretory pathway in degenerating MNs using structural markers. Using the H69 antibody that labels an structural glycoprotein of the ER membrane³³ we observed a progressive decrease in the MNs to be absent by 7 dpo (Fig. 5). Similarly, we found that the Golgi apparatus labeled with either the anti-58-K-Golgi or the α -giantin antibody, presented a fragmented appearance by the same time (Fig. 5).

In contrast, no obvious alterations were detected in MNs after distal axotomy at the same time-points. Contralateral MNs after both lesions maintained the normal immunoreactivity for these markers (data not shown).

Considering that organization and movement of organelles are maintained by direct linkage to microtubules,³⁴ we investigated whether there was any abnormality on the microtubule network. As expected, microtubule-associated protein 2A/B (MAP2A/B) staining disappeared progressively, being more evident in the soma of the MNs from 7 dpo onwards after root avulsion (Fig. 5 and data not shown). In contrast, the immunostaining of MAP2 maintained its normal aspect after distal nerve lesion. On the other hand, β -tubulin-III staining was unaltered in both models (Fig. 5).

These results showed that there is a disorganization of the endomembrane system and microtubule network in root avulsed MNs, whereas distally axotomized MNs do not show any organelle alteration.

Autophagy is activated in avulsed and axotomized MNs

In light of these alterations in organelles and cytoskeleton and since autophagy is activated upon ER stress as a defensive mechanism for survival,³⁵ we investigated whether autophagy might be implicated. For that purpose, we analysed three markers of autophagy in spinal cord sections of control and lesioned animals: LC3, Beclin and Lamp-1. The increase and redistribution of conjugated LC3-II was analysed by Western Blot and we observed a significant increase in the conversion from LC3-I to LC3-II by 3 dpo in both ipsilateral (6.9 ± 1.8 fold and 11.7 ± 5.6) and contralateral (4.7 ± 0.6 and 10 ± 5.3 fold) sides of the ventral horn, after root avulsion and distal axotomy, respectively (Fig. 6a). Thereafter, the protein levels returned to basal levels in both types of injury. At the same time-point, 3 dpo, Beclin-1 levels reached a statistically

significant increase to 4.4 ± 0.1 fold in ipsilateral ventral horn after root avulsion, and to 4.1 ± 1.3 and 4.7 ± 1.3 fold in the ipsilateral and the contralateral ventral horns after distal axotomy (Fig. 6a). Confocal analysis showed that Beclin-1 presented a speckled autophagosome-like pattern of distribution in the MNs after both types of injury by 3-5 dpo (Fig. 6b).

Formed autophagosomes develop into mature degradative vacuoles by progressive fusion with late endosomes and lysosomes. Therefore, we analyzed by immunohistochemistry the distribution of a 110 kDa lysosomal membrane glycoprotein (Lamp-1) which has been reported to be essential for the correct fusion with the autophagosome.³⁶ Control animals revealed a weak immunostaining for Lamp-1, indicating basal lysosomal traffic (Fig. 7). At 3 days after root avulsion, the Lamp-1 immunostaining increased substantially in MNs after both types of injury. However, from 5 days onwards the lysosomal marker completely disappeared only in root avulsed MNs (Fig. 7). Contralateral MNs maintained the Lamp-1 staining observed at 3 dpo at all time points analyzed (data not shown). In contrast, in MNs after distal axotomy, Lamp-1 immunoreactivity maintained the same earlier profile with sustained high staining from 3 dpo till 7 dpo when it returned to basal levels (Fig. 7 and data not shown). In this model, contralateral MNs had also an increased immunoreactivity for Lamp-1 at all time points analyzed. We discarded anomalies in lysosomal content by analysing cathepsin b expression, which confirmed a normal distribution in avulsed MNs at 7 dpo (Fig. 7).

These results indicated that autophagy is initiated following nerve injury independently of the distance and severity of the lesion. However, the normal autophagy outflow might be compromised in degenerating MNs in comparison to non-degenerating ones.

BiP overexpression protect root avulsed MNs

Considering that BiP is a key chaperone involved in the regulation of autophagy and because of the different dynamic regulation observed in degenerating *vs* non-degenerating MNs, we promoted its overexpression using adenoviral vectors. Intratechal injection of the virus at the lumbar region resulted in infection of all neural cell types (supplemental Fig. 1), including MNs. We delivered the virus immediately after root avulsion, and followed up the animals for three weeks. The histological assessment showed a significant increase in the number of surviving MNs, from 37.7 ± 2.4 % in the untreated to 54.7 ± 5.6 % per section in the root avulsed rats treated with AdCMVBiP (Fig. 8a). We analyzed molecular changes related to neuroprotection in samples taken at 7 dpo, when the most obvious changes in the root avulsed MNs were observed. The expression of Bcl-2 in the avulsed MNs was restored in the BiP-overexpressing rats compared to their respective controls (Fig. 8b). However, the expression of Beclin-1, Lamp-1 and MAP2A did not show differences between control and BiP-treated rats after root avulsion (data not shown). Thus, we analyzed treated and untreated rats at 3 dpo when obvious upregulation of LC3II was observed in injured animals. In avulsed rats treated with AdCMVBiP there was a inversion in the LC3 bands with reduced formation of LC3II (Fig. 8c) suggesting either lack of autophagy or a rapid dissipation due to increased autophagic flow that prevent LC3II accumulation. We also checked the corresponding increase in BiP levels. We observed higher levels although without statistical significance in part due to the normal increase produced at 3 dpo after root avulsion, as observed in samples from rats treated with AdCMV β gal. These findings suggested that overexpression of BiP promotes survival of root avulsed MNs and that neuroprotection may be operating through an specific action on the autophagic flow as well as the activation of Bcl-2 pro-survival factor.

DISCUSSION

We aimed to determine the molecular and cellular changes that contribute to the degeneration of MNs following spinal root avulsion. We found that root avulsion caused ER stress, revealed by an early activation of the IRE1 α /Xbp1 and ATF4-mediated branches of the UPR, and initiation of autophagy, with concomitant disorganization of the cytoskeleton and organelles from the secretory pathway. In contrast, the regenerative MN reaction following distal axotomy and reconnection did not induce ER stress and it triggered only autophagy. The GRP78/BiP protein level reduction found specifically in MNs around 7 dpo after root avulsion seems to be one of the key events in the degenerative process, since its overexpression led to a significant increase in MN survival.

The MN reaction after axotomy is produced by retrograde signals that convey information of axon damage from the periphery to the cell body. At the very beginning, calcium homeostasis disturbances⁹ and trophic factor withdrawal,¹⁰ occurs after axotomy and participate in this neuronal response. Both events had already been linked to ER stress *in vitro*.³⁷ Therefore, it was of interest to investigate the presence of ER stress after axotomy and its relationship with MN death *in vivo*. To cope with ER stress, the cell may respond activating UPR and autophagic events. We have found that following root avulsion, degenerating MNs initially suffer ER stress and respond increasing the ribonuclease activity of IRE1 α and raising ATF4 levels. These molecular events are distinctive from MNs that do not degenerate after distal nerve lesion and are allowed to regenerate. Considering the influence of trophic factor withdrawal from proximal nerve stump for axotomized MN survival, it is possible that this might trigger UPR activation as a protective self-defense mechanism. In fact, it has been proposed that ATF4 accumulation allows the cell to survive for a longer period following a

process of slow program death in contrast to a faster apoptotic program.³⁸ This slow process culminates with severe Golgi and ER fragmentation together with cytoskeletal abnormalities in the microtubule network which were not apparent in non-degenerating MNs. Considering that prolonged UPR leads to cell death via apoptosis, we expected to find any sign in this respect but we failed what was in agreement with previous reports suggesting rather a necrosis process implicated in the MN death.^{6,7} Thus, considering that ER stress can trigger autophagy and continued autophagy is detrimental to cell survival as a consequence of excess organelle and macromolecular catabolism, we investigate the presence of that event. Autophagy may be triggered by a PERK-independent ATF4 accumulation that induces LC3II formation.³⁸ IRE1/Xbp1 has been also implicated in the initiation of autophagy.²¹ In the root avulsed model, ATF4 accumulation and IRE1/Xbp1 activation in MNs was found coincident with early LC3 II and Beclin-1 accumulation and it persisted thereafter. It was surprising to find early detection of these events also in non-degenerating MNs, in which UPR was not triggered. These results suggested that although in gross, autophagy was early activated in both cases, substantial differences make MNs to render vulnerable to cell death or not. Autophagy might be initiated likely due to the rapid activation of several calcium-dependent kinases, such as calmodulin kinase II, due to axonal membrane rupture and massive calcium influx.³⁹ Thus, autophagy may be activated as a self-defense mechanism in response to the insult. In damaged MNs, this activation may supply energy while the cell re-programs its mode to initiate axonal regeneration.⁵ However, the autophagy process may be different depending on concomitant activation of other mechanisms, such as the UPR, to be detrimental or to become protective in regenerating MNs. We have found two molecular signatures that mark these differences: vanishing of Lamp-1 staining from 5 days postlesion, and a distinctive decrease of BiP levels

around 7 dpo. The total absence of Lamp-1 is unusual and we cannot discard that may be an artefact due to changes in cell phenotype that affect antigen presentation in the immunohistochemical analysis, but it seems to be specific for Lamp-1 since cathepsin B was well present. Lamp-1 is essential for the last steps in the autophagic flow and its reduction may affect also the resolution of the protective mechanism. On the other hand, we have found that BiP level is a key event in the survival of MNs following root avulsion. It is well known that BiP has essential roles in orchestrating ER stress and managing misfolded proteins through interactions with proteasome and autophagic initiation.^{17, 27} In light of our results, it seems that raising the levels of BiP early after lesion modifies the outcome of the autophagic flow leading to promotion of survival pathways with Bcl-2 upregulation. Both events might be linked since Bcl-2 can regulate autophagy by sequestering Beclin-1 and thus, inhibiting the promotion of autophagy^{40, 41, 42} Therefore, the increase of Bcl-2, promoted by BiP overexpression, may decrease caspase-independent cell death⁴² after root avulsion. Although we have not seen changes in Beclin-1 after Bcl-2 overexpression, further analyses of Bcl-2 on the autophagic flux should be performed in order to shed light into these mechanisms. It is out of the scope of the present work to decipher the detailed nature of these interactions in the context of MN degeneration, but we think that BiP-Bcl2 connection and the autophagic process deserve further study in relation to neuronal degeneration and survival after axonal damage. It may also lead to therapeutic perspectives in spinal cord trauma and MN diseases, since the root avulsion model has been proposed as non-genetic model for some neurodegenerative diseases.⁴ In this regard, gene therapy promoting overexpression of BiP seems a promising strategy.

MATERIALS AND METHODS

Surgical procedures

Sprague-Dawley female rats aged 12 weeks were kept under standard conditions of light and temperature and fed with food and water ad libitum. Surgical procedures were done under sodium pentobarbital (40 mg/kg, i.p.) anesthesia. For spinal root injury, an extravertebral avulsion of L4 and L5 roots was done as previously described.⁵ Briefly, after a midline skin incision, the right sciatic nerve was identified and the L4-L5 spinal nerves were separated. A moderate traction was applied away from the intervertebral foramina, delivering the mixed spinal nerves that contained the motor and sensory roots and dorsal root ganglia. The left roots were kept intact. To produce distal axotomy, the right sciatic nerve was exposed at mid thigh and freed from surrounding tissues; then, the nerve was transected and immediately repaired by fascicular suture (10-0, Ethicon).³ After both types of lesions, the wound was sutured by planes, disinfected with povidone iodine and the animals allowed recovering in a warm environment. Groups of rats (n=4-5) with root avulsion or nerve lesion and unoperated controls were used at different time intervals (1, 3, 5, 7, 10 and 21 days post operation (dpo)). All procedures involving animals were approved by the Ethics Committee of our institution, and followed the European Community Council Directive 86/609/EEC.

Construction, purification and infection with recombinant adenoviruses

cDNA encoding grp78 (ATCC, LGC Promochem) was cloned into the pAC.CMV shuttle vector. Recombinant adenoviruses were constructed by homologous recombination in HEK293 cells as described earlier,²⁸ and were replication deficient and included the cytomegalovirus (CMV) promoter. A control adenovirus expressing bacterial β -galactosidase (AdCMV β gal) was a kind gift of C.B. Newgard (Duke

University, Durham, NC). Viruses were purified using the Vivapure AdenoPack™ 20 kit according to the instructions of the manufacturer (Sartorius, Goettingen, Germany). For viral infection, immediately after root avulsion the animals were injected with 14 µl of either AdCMVgrp78 or AdCMVβgal viruses (10^8 pfu/ml) by means of a 30-gauge needle into the thecal space at the lumbar site. One minute post-infusion, the needle was removed and the incision closed. Untreated animals with root avulsion were also used as controls.

Histology and Immunohistochemistry

Control and lesioned animals were deeply anesthetized with sodium pentobarbital (60 mg/kg, i.p.) and perfused with 4% paraformaldehyde in phosphate-buffered saline (PBS) at 3, 5, 7 and 10 dpo (n=4 at each time post-lesion). The L4 and L5 segments (5 mm total length) of the spinal cord were removed, post-fixed in the same fixative for 24h and cryopreserved in 30% sucrose. Transverse sections (20 µm thick) were cut with a cryotome (Leica). The sections were distributed in 50 series of 5 sections each, and each series was prepared for immunohistochemical analysis by blocking with 10% bovine serum in Tris-buffered saline (TBS) for 2 days at 4°C with different primary antibodies (Table 1). After washes, sections were incubated for 1 day at 4°C with biotinylated secondary antibodies (Vector, Burlingame, CA, USA, 1:200) with Cy-2 or Cy-3 conjugated donkey anti-rabbit antibodies (Jackson ImmunoResearch, West Grove, PA, USA, 1:200). Slides were counterstained with DAPI (Sigma, 1:1000), dehydrated and mounted with DPX (Fluka, Buchs, Switzerland). Sections from different time points of injured and control animals were processed in parallel for immunohistochemistry. Images of the ventral area of the spinal cord were taken under the same exposure time, sensibility and resolution for each marker analyzed, with the

aid of a digital camera (Olympus DP50) attached to the microscope (Olympus BX51). Confocal microscope examinations were performed with a Leica TCS SP2 AOBS laser scanning confocal system (Leica, Heidelberg, Germany). Images were collected with a 1.4 numerical aperture oil-immersion 63X objective. Confocal images were obtained using two separate photomultiplier channels, either concurrently or in separate runs, and were separately projected and merged using a pseudocolor display showing green for Cy2, red for Cy3 and yellow for colocalization.

Spinal cords obtained from animals at 21 dpo were cut at 40 μm thickness. One series of five sections (separated by 200 μm) of each mm for each spinal cord was stained with cresyl violet for MN counting as previously described⁵. Only cells localized in the lateral ventral horn, with diameters ranging 30-70 μm , with a prominent nucleolus and polygonal in shape were accepted to selectively count the population of α -MNs.

Spinal cord sections from animals receiving the injection of AdCMV β gal virus were incubated in 5-bromo-4-chloro-3-indolyl-b-D-galactopyranoside (X-gal, 1 mg/ml final concentration from a 20 m/ml stock solution in *N,N*-dimethyl formamide) and buffer 100 mM sodium phosphate, 1.3 mM MgCl₂, 3 mM K₃Fe(CN)₆, 3 mM K₄Fe(CN)₆ at pH7.3 for 3 h at 37°C and mounted on slides as previously described.²⁹

For Terminal dUTP Nick End Labeling (TUNEL) staining, tissue sections were rinsed in Tris buffer (10 mM, pH 8) and EDTA (5 mM) and then immersed in the same buffer plus proteinase K (20 g/mL) for 15 min at room temperature. After washes with EDTA, sections were incubated for 10 min in TdT buffer (Tris 30 mM, 140 mM sodium cacodilate, 1 mM cobalt chloride, pH 7.7) and then in TdT buffer plus 0.161 U/L TdT enzyme (Terminal Transferase, 3333566 Roche, Mannheim, Germany) and 0.0161 nmol/L biotin-16-dUTP (1093070, Roche, Mannheim, Germany) for 30 min at 37°C. The reaction was stopped with citrate buffer (300 mM sodium chloride, 30 mM sodium

citrate, 5 mM EDTA). After washes, sections were incubated with HRP-conjugated streptavidin (1:400, SA5004, Vector Laboratories) and the peroxidase reaction product was visualized in a solution containing 0.02% DAB, 2.4% nickel ammonium, 0.04% chloride ammonium, 0.2% glucose D+, and 0.0027% glucose oxidase in 0.1 M acetate buffer (pH 6.0). The positive controls used for TUNEL and caspase-3 immunostaining were kindly provided by Dr. Bernardo Castellano and Dra. Berta Gonzalez from a well-characterized *in vivo* model of excitotoxicity in postnatal rats.³⁰

Protein extraction and western blot

Rats were anesthetised and decapitated at 3, 5, 7 and 9 days for sample preparation (n=3 per time point). The L4-L5 spinal cord segments were removed and divided into quarters to isolate the ventral part of each side. For protein extraction, the ipsilateral and contralateral ventral parts of L4-L5 cord segments were separately homogenized in RIPA modified buffer (50 mM Tris-HCl pH 7.5, 1% Triton X-100, 0.5% DOC Na, 0.2% SDS, 100 mM NaCl, 1 mM EDTA) with 10 µl/ml of a Protease Inhibitor Cocktail (Sigma, St. Louis, MO, USA). After clearance, protein concentration was measured by the BCA method assay (BCA Protein Assay kit, Pierce). Twenty micrograms of protein were loaded from each sample in 12% SDS-polyacrylamide gels. The transfer buffer was 25 mM trizma-base, 192 mM glycine, 20% (v/v) methanol, pH 8.4. The primary antibodies used are summarized in Table 1. The membrane was visualized by enhanced chemiluminescence method, and the images analyzed with Gene Snap and Gene Tools softwares, and Gene Genome apparatus (Syngene). The positive controls for ATF6, phosphorylated and total eIF2 α , CHOP and caspase 12 are thoracic 8 (T8) samples of animals submitted to spinal cord injury (c+)²⁸

Statistical analysis

All values are presented as mean \pm SEM. Statistical comparisons between means were made by one-way ANOVA followed by Dunnett's multiple comparison tests. A probability of 95% was taken to indicate significant differences.

ACKNOWLEDGMENTS

The authors thank Dr. Rosa Gasa from the Department of Diabetes, IDIBAPS, Barcelona (Spain) for her technical support and advice in the preparation and use of adenoviral vectors, and Drs. Berta Gonzalez and Bernardo Castellano for helpful advice on the study of TUNEL and caspase 3 activation. This work was supported by grants from the Ministerio de Ciencia y Tecnología (grants SAF2006-08682, SAF2009-12495), the Ministerio de Sanidad (FIS PI081932) and funds from Red de Terapia Celular (TERCEL) and from the Centro de investigación biomédica en Red para enfermedades neurodegenerativas (CIBERNED) of Spain.

REFERENCES

1. Nissl, F, (1892) Über die Veraenderungen der Ganglienzellen amFacialiskern des Kaninchens nach Ausreissung der Nerven. *Allg Z Psychiatr* 48: 197–198.
2. Hanz, S and Fainzilber, M, (2006) Retrograde signaling in injured nerve--the axon reaction revisited. *J Neurochem* 99: 13-9.
3. Valero-Cabre, A, Tsironis, K, Skouras, E, Navarro, X and Neiss, WF, (2004) Peripheral and spinal motor reorganization after nerve injury and repair. *J Neurotrauma* 21: 95-108.
4. Martin, LJ, Kaiser, A and Price, AC, (1999) Motor neuron degeneration after sciatic nerve avulsion in adult rat evolves with oxidative stress and is apoptosis. *J Neurobiol* 40: 185-201.
5. Penas, C, Casas, C, Robert, I, Fores, J and Navarro, X, (2009) Cytoskeletal and activity-related changes in spinal motoneurons after root avulsion. *J Neurotrauma* 26: 763-79.
6. Li, L, Houenou, LJ, Wu, W, Lei, M, Prevet, DM and Oppenheim, RW, (1998) Characterization of spinal motoneuron degeneration following different types of peripheral nerve injury in neonatal and adult mice. *J Comp Neurol* 396: 158-68.
7. Park, OH, Lee, KJ, Rhyu, IJ, Geum, D, Kim, H, Buss, R et al., (2007) Bax-dependent and -independent death of motoneurons after facial nerve injury in adult mice. *Eur J Neurosci* 26: 1421-32.
8. Ziv, NE and Spira, ME, (1995) Axotomy induces a transient and localized elevation of the free intracellular calcium concentration to the millimolar range. *J Neurophysiol* 74: 2625-37.
9. Titmus, MJ and Faber, DS, (1990) Axotomy-induced alterations in the electrophysiological characteristics of neurons. *Prog Neurobiol* 35: 1-51.
10. Purves, D, Snider, WD and Voyvodic, JT, (1988) Trophic regulation of nerve cell morphology and innervation in the autonomic nervous system. *Nature* 336: 123-8.
11. Spacek, J and Harris, KM, (1997) Three-dimensional organization of smooth endoplasmic reticulum in hippocampal CA1 dendrites and dendritic spines of the immature and mature rat. *J Neurosci* 17: 190-203.
12. Westrum, LE and Gray, EG, (1986) New observations on the substructure of the active zone of brain synapses and motor endplates. *Proc R Soc Lond B Biol Sci* 229: 29-38.
13. Feiguin, F, Ferreira, A, Kosik, KS and Caceres, A, (1994) Kinesin-mediated organelle translocation revealed by specific cellular manipulations. *J Cell Biol* 127: 1021-39.
14. Faitova, J, Krekac, D, Hrstka, R and Vojtesek, B, (2006) Endoplasmic reticulum stress and apoptosis. *Cell Mol Biol Lett* 11: 488-505.
15. Penas, C, Guzman, MS, Verdu, E, Fores, J, Navarro, X and Casas, C, (2007) Spinal cord injury induces endoplasmic reticulum stress with different cell-type dependent response. *J Neurochem* 102: 1242-55.
16. Yoshida, H, (2007) ER stress and diseases. *Febs J* 274: 630-58.
17. Tamura, T, Cormier, JH and Hebert, DN, (2008) Sweet bays of ERAD. *Trends Biochem Sci* 33: 298-300.
18. Kroemer, G and Levine, B, (2008) Autophagic cell death: the story of a misnomer. *Nat Rev Mol Cell Biol* 9: 1004-10.
19. Bertolotti, A, Zhang, Y, Hendershot, LM, Harding, HP and Ron, D, (2000) Dynamic interaction of BiP and ER stress transducers in the unfolded-protein response. *Nat Cell Biol* 2: 326-32.

20. Mori, K, (2000) Tripartite management of unfolded proteins in the endoplasmic reticulum. *Cell* 101: 451-4.
21. Ogata, M, Hino, S, Saito, A, Morikawa, K, Kondo, S, Kanemoto, S et al., (2006) Autophagy is activated for cell survival after endoplasmic reticulum stress. *Mol Cell Biol* 26: 9220-31.
22. Kouroku, Y, Fujita, E, Tanida, I, Ueno, T, Isoai, A, Kumagai, H et al., (2007) ER stress (PERK/eIF2 α phosphorylation) mediates the polyglutamine-induced LC3 conversion, an essential step for autophagy formation. *Cell Death Differ* 14: 230-9.
23. Ito, M, Nakagawa, H, Okada, T, Miyazaki, S and Matsuo, S, (2009) ER-stress caused by accumulated intracisternal granules activates autophagy through a different signal pathway from unfolded protein response in exocrine pancreas cells of rats exposed to fluoride. *Arch Toxicol* 83: 151-9.
24. Ohsumi, Y, (2001) Molecular dissection of autophagy: two ubiquitin-like systems. *Nat Rev Mol Cell Biol* 2: 211-6.
25. Sou, YS, Tanida, I, Komatsu, M, Ueno, T and Kominami, E, (2006) Phosphatidylserine in addition to phosphatidylethanolamine is an in vitro target of the mammalian Atg8 modifiers, LC3, GABARAP, and GATE-16. *J Biol Chem* 281: 3017-24.
26. He, C and Klionsky, DJ, (2009) Regulation mechanisms and signaling pathways of autophagy. *Annu Rev Genet* 43: 67-93.
27. Li, J, Ni, M, Lee, B, Barron, E, Hinton, DR and Lee, AS, (2008) The unfolded protein response regulator GRP78/BiP is required for endoplasmic reticulum integrity and stress-induced autophagy in mammalian cells. *Cell Death Differ* 15: 1460-71.
28. Becker, TC, Noel, RJ, Coats, WS, Gomez-Foix, AM, Alam, T, Gerard, RD et al., (1994) Use of recombinant adenovirus for metabolic engineering of mammalian cells. *Methods Cell Biol* 43 Pt A: 161-89.
29. Mannes, AJ, Caudle, RM, O'Connell, BC and Iadarola, MJ, (1998) Adenoviral gene transfer to spinal-cord neurons: intrathecal vs. intraparenchymal administration. *Brain Res* 793: 1-6.
30. Acarin, L, Villapol, S, Faiz, M, Rohn, TT, Castellano, B and Gonzalez, B, (2007) Caspase-3 activation in astrocytes following postnatal excitotoxic damage correlates with cytoskeletal remodeling but not with cell death or proliferation. *Glia* 55: 954-65.
31. Yoshida, H, Oku, M, Suzuki, M and Mori, K, (2006) pXBP1(U) encoded in XBP1 pre-mRNA negatively regulates unfolded protein response activator pXBP1(S) in mammalian ER stress response. *J Cell Biol* 172: 565-75.
32. Danial, NN and Korsmeyer, SJ, (2004) Cell death: critical control points. *Cell* 116: 205-19.
33. Hughes, EN and August, JT, (1981) Characterization of plasma membrane proteins identified by monoclonal antibodies. *J Biol Chem* 256: 664-71.
34. Waterman-Storer, CM and Salmon, ED, (1998) Endoplasmic reticulum membrane tubules are distributed by microtubules in living cells using three distinct mechanisms. *Curr Biol* 8: 798-806.
35. Ding, WX, Ni, HM, Gao, W, Hou, YF, Melan, MA, Chen, X et al., (2007) Differential effects of endoplasmic reticulum stress-induced autophagy on cell survival. *J Biol Chem* 282: 4702-10.
36. Binker, MG, Cosen-Binker, LI, Terebiznik, MR, Mallo, GV, McCaw, SE, Eskelinen, EL et al., (2007) Arrested maturation of Neisseria-containing

- phagosomes in the absence of the lysosome-associated membrane proteins, LAMP-1 and LAMP-2. *Cell Microbiol* 9: 2153-66.
37. Brewster, JL, Linseman, DA, Bouchard, RJ, Loucks, FA, Precht, TA, Esch, EA et al., (2006) Endoplasmic reticulum stress and trophic factor withdrawal activate distinct signaling cascades that induce glycogen synthase kinase-3 beta and a caspase-9-dependent apoptosis in cerebellar granule neurons. *Mol Cell Neurosci* 32: 242-53.
 38. Milani, M, Rzymiski, T, Mellor, HR, Pike, L, Bottini, A, Generali, D et al., (2009) The role of ATF4 stabilization and autophagy in resistance of breast cancer cells treated with Bortezomib. *Cancer Res* 69: 4415-23.
 39. Navarro, X, Vivo, M and Valero-Cabre, A, (2007) Neural plasticity after peripheral nerve injury and regeneration. *Prog Neurobiol* 82: 163-201.
 40. Liang, XH, Kleeman, LK, Jiang, HH, Gordon, G, Goldman, J E, Berry, G, Herman, B, and Levine, B, (1998). Protection against fatal Sindbis virus encephalitis by beclin, a novel Bcl-2-interacting protein. *J Virol*. 72: 8586-8596.
 41. Pattingre S, Tassa A, Qu X, Garuti R, Liang XH, Mizushima N, Packer M, Schneider MD, Levine, B, (2005) Bcl-2 antiapoptotic proteins inhibit Beclin-1-dependent autophagy. *Cell* 122: 927-39.
 42. Rashmi, R, Pillai, SG, Vijayalingam, S, Ryerse, J, Chinnadurai, G, (2008) BH3-only protein BIK induces caspase-independent cell death with autophagic features in Bcl-2 null cells *Oncogene* 27: 1366–1375.

FIGURE LEGENDS

Figure 1 *Top*. Western blots reveal the presence of the full length 90KDa fragment of ATF6 α but absence of its cleaved product and lack of phosphorylated eIF2 α referred to actin levels or total quantity of eIF2 α respectively, in the ventral horns of the L4-L5 spinal cord segments either at the ipsilateral (i) and the contralateral (co) sides at 3, 5, 7 and 9 days after root avulsion. Note that we added a positive control from samples of animals submitted to spinal cord injury (c+) ²⁸ *Bottom* Microphotographs of the ventral horn spinal cord (highlighted in the left picture) from a immunohistochemical analysis of ATF4 distribution in the spinal MNs of the ipsilateral side from control animals (c), and animals that were submitted to root avulsion (R.A) or to distal axotomy by nerve section (D.A) at 5 and 7 dpo. Note the increased immunoreactivity in the R.A model. Bar = 100 μ m.

Figure 2 (a) Histogram of mean values obtained by quantitative Real-time PCR for *Chop* mRNA referred to *Gapdh* levels in the ventral horn of the spinal cord of control rats and in the ipsilateral and contralateral sides of root avulsed rats. Samples were significantly different according to one-way ANOVA (*p<0.05), however post-hoc analysis did not show up differences between ipsilateral and contralateral or control sides. (b) Western blot analysis of CHOP protein levels and full-length (50 kDa) or cleaved fragment (25 kDa) of caspase 12 at different time points in the ipsilateral (i) and contralateral (co) ventral horns of the spinal cord of root avulsed animals. Note that we added a positive control from samples of animals submitted to spinal cord injury (c+) ²⁸. (c) Microphotographs of control and avulsed ventral horns immunostained for caspase 12 (A, B), and cleaved caspase 3 (red) (D, F) alone (D) or versus Choline acetyl transferase (ChAT, green) (F) at different times post-injury in control positive animals

(D) or root avulsed ones (E,F). Note that Caspase12 completely disappears from 7 dpo in the MNs and there is no co-localization between ChAT and cleaved caspase 3 immunostaining. TUNEL staining (black) was also performed in a positive control section of brain tissue from an excitotoxic rat model⁵²(C), and in the root avulsed model (E) colabeled for ChAT (brown). Bar = 100 μ m.

Figure 3 *Top*. Analysis of the presence of the spliced (XBP1s) or uncut (XBP1u) isoform of XBP1 by western blot. Histograms show the mean ratio for each isoform and referred to actin levels in ventral horns of control intact rats (c, empty bars), and of contralateral (grey bars) and ipsilateral (black bars) ventral horns of rats after root avulsion or after distal nerve axotomy. * $p < 0.05$ *Bottom*. Microphotographs of transverse sections of the spinal cord of control and axotomized showing the MNs at the ventral horns immunostained with anti-pan-XBP1 co-localizing with neuronal specific immunostaining for NeuN in both models at different time-points. Dotted lines separate white and grey matter at the ventral side of the spinal cord. Bar = 200 μ m.

Figure 4 (a) Western blots and histogram showing the analysis of BiP protein levels in control animals (c), root avulsed (R.A) and distal axotomized (D.A) ventral horns ipsilateral (i) and contralateral (co) to the lesion. (b) Microphotographs showing immunostaining for BiP *versus* neurofilament (SMI32) and for Bcl2 *versus* ChAT in both injury models at different time-points. Bar = 200 μ m.

Figure 5 Microphotographs of control, root avulsed (R.A) and axotomized (D.A) MNs immunostained for an ER structural protein with the antibody H69(red) *versus* GFAP positive astrocytes (green); for a Golgi apparatus structural protein with the antibody

58K (red) *versus* ChAT (green) and cytoskeletal proteins such as Map2 a/b (green) *versus* β -Tubulin III (red) at different time-points. Another marker (α -giantin) was used to better illustrate the fragmentation of the Golgi apparatus in the root avulsed MNs at different time points. Bar = 100 μ m for all microphotographs except for α -giantin in which bar = 40 μ m. Arrows indicate where MNs are located.

Figure 6 (a) Western blots of LC3I (superior arrow), LC3II (inferior arrow) and Beclin-1 from L4-L5 ventral spinal cords segments of control and lesioned animals at different days post-operation (dpo), referred to actin levels in control (c), contralateral (co) and ipsilateral (i) sides. * $p < 0.05$. (b) Confocal images of the distribution of Beclin-1 in the MNs from control rats (c), the root avulsed (RA) and the distal axotomy (DA) models. Bar = 100 μ m.

Figure 7 Immunohistochemical analysis of Lamp-1 lysosomal distribution *versus* ChAT immunostaining in MNs from root avulsion and nerve section models at different time-points. The presence of another lysosomal marker Cathepsin B was also analysed at 5 dpo. Bar = 40 μ m.

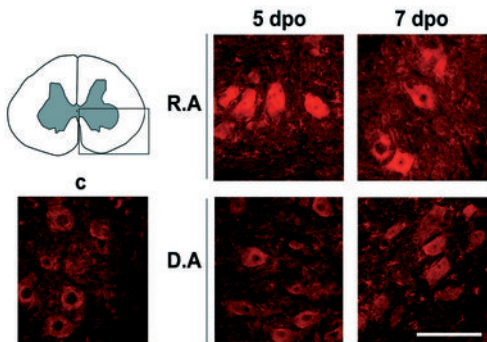
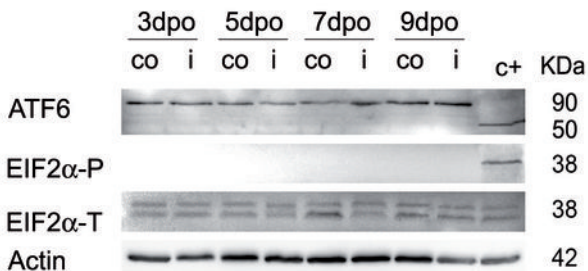
Figure 8 (a) Representative pictures of cresyl-violet stained ipsilateral ventral horns of untreated (U) root avulsed rats showing the reduction of MNs at 21 dpo, and the injured rats treated with either the AdCMVbGal or the AdCMVBiP viral vectors. The histogram represents the mean percentage of surviving MNs in the ipsilateral with respect to contralateral side. * $p < 0.05$. (b) Immunohistochemical analysis of the expression of Bcl2 in MNs labeled with anti-ChAT at 7dpo in root avulsed rats treated with the different vectors. Bar= 100 μ m. (c) Representative membranes of western blots

for LC3I (top band), LC3II (bottom band) and BiP from L4-L5 ventral spinal cord segments of injured rats treated with either AdCMVbGal or AdCMVBiP viral vectors. Bar graph representations (bottom) of band densitometry respective to actin levels (n=4). C stands for contralateral and I for ipsilateral.

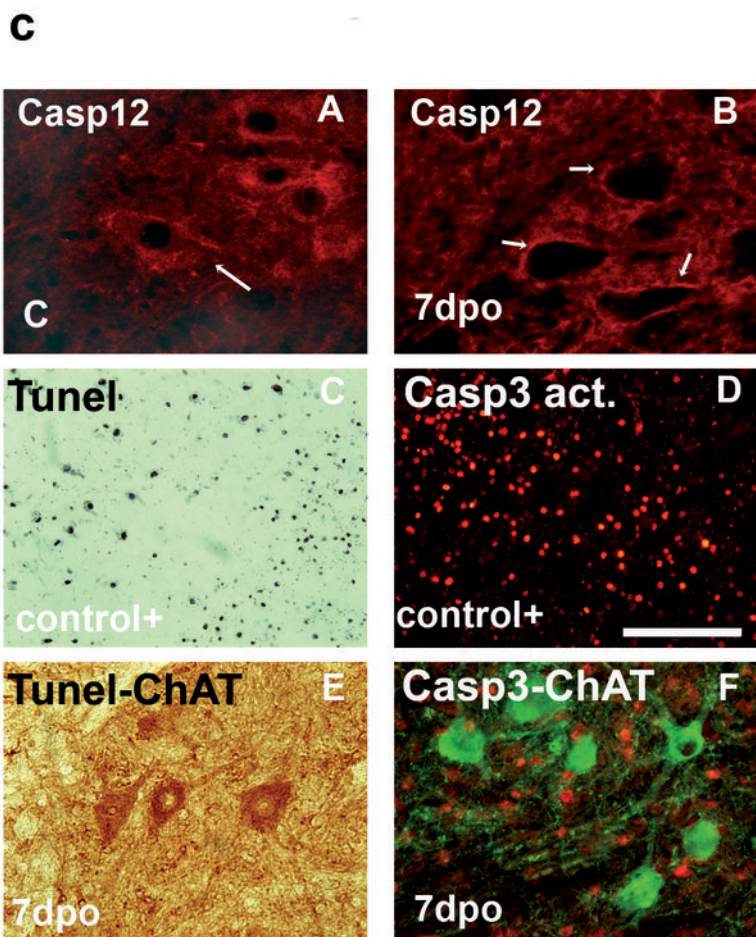
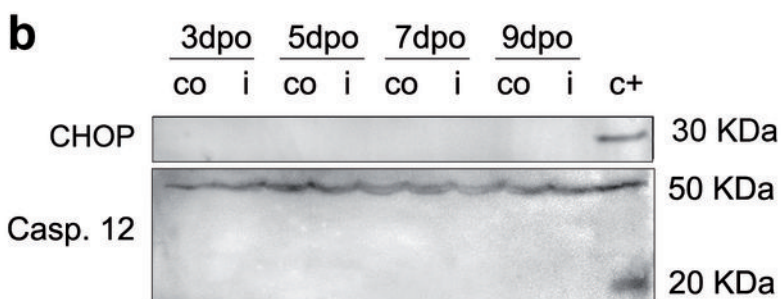
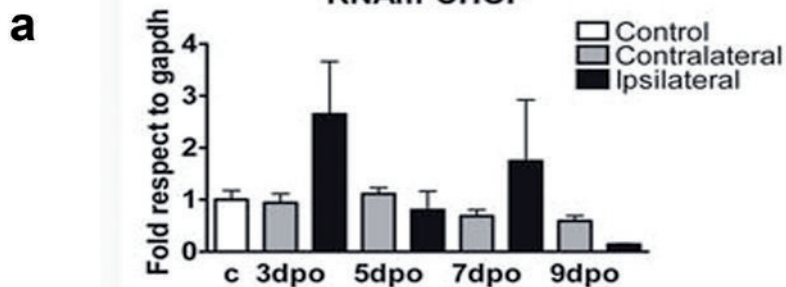
Supplemental figure 1 *Top.* Representative picture of transverse sections of spinal cord from root avulsed rats treated with AdCMV β gal and stained for the presence of β galactosidase at 3 dpo showing staining in MNs and other cells. *Bottom.* Microphotographs resulted for the immunostaining with anti-ChAT, with anti-APC to reveal oligodendrocytes, with anti- GFAP to reveal astrocytes and with Iba4 to reveal microglia to analyze BiP expression in root avulsed rats after the treatment with either AdCMV β gal or AdCMVBiP. Note overexpression in all cells in the latter case. Bar = 100 μ m.

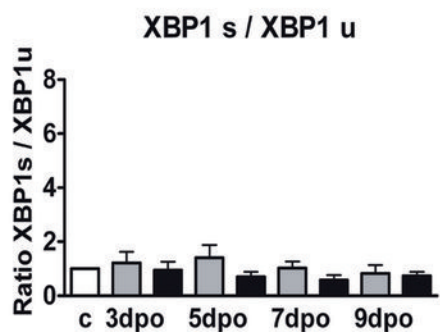
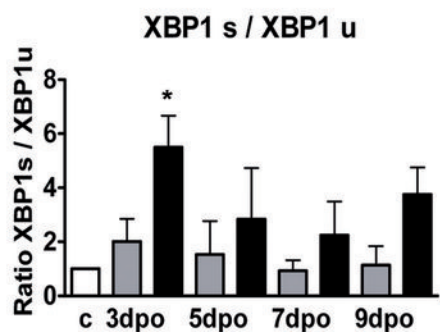
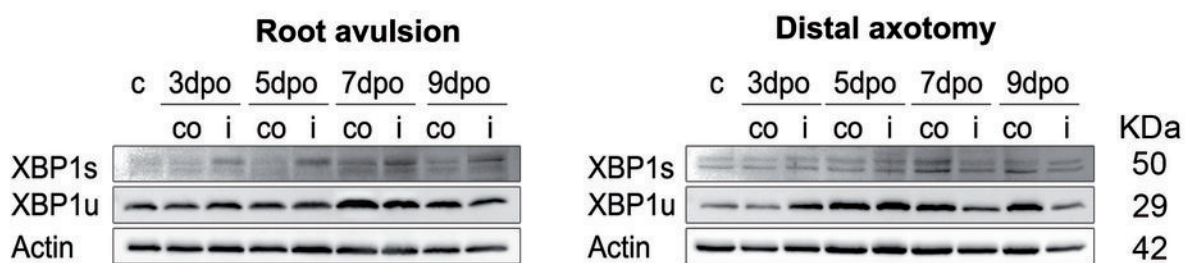
Table 1. List of antibodies used for Immunohistochemistry (IHC) and/or Western blot (WB).

Name	Host		Dilution for IHC	Dilution for WB
Cleaved casp 3 (Asp175)	Polyclonal	Cell Signalling Technologies, Danvers, USA	1/20	
GRP78/BiP	Polyclonal	Stressgen Biotechnologies, Victoria, BC, Canada,	1/200	1/10000
CREB2/ATF4	Polyclonal	Santa Cruz Biotechnologies, Santa Cruz, CA, USA	1/50	1/200
H69	Polyclonal	Developmental Studies Hybridoma Bank, Iowa, USA	1/100	
NeuN	Monoclonal	Chemicon, Temecula, CA, USA	1/100	
α-giantin	Monoclonal	kindly provided by Enrique Claro	1/1000	
58K-Golgi prot.	Polyclonal	Abcam, Cambridge, UK	1/1000	
Casp 12	Polyclonal	Sigma	1/350	
Beclin-1	Polyclonal	Abcam	1/200	1/500
Lamp-1	Polyclonal	Developmental Studies Hybridoma Bank	1/200	
ChAT	Polyclonal	Chemicon	1/75	
GFAP	Polyclonal	Dako	1/1000	
SMI32	Monoclonal	Stenberger Monoclonals, Baltimore, MD, USA	1/2500	
MAP2	Mouse	Sigma	1/500	
β-III-tubulin	Mouse	Covance, Berkeley, CA, USA	1/100	
CC1/APC	Mouse	Abcam, Cambridge, UK	1/400	
IB4	Polyclonal	Vector, Burlingame, CA, USA	1/1000	
Bcl-2	Polyclonal	BD Biosciences	1/200	



RNAi CHOP





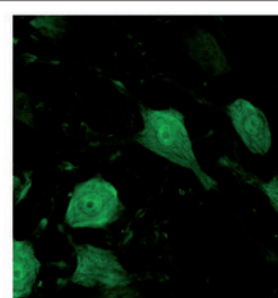
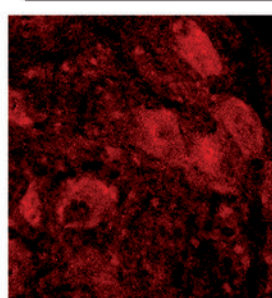
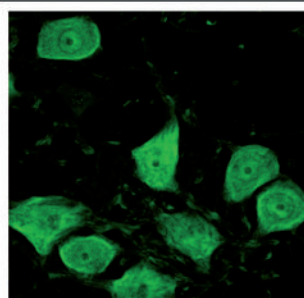
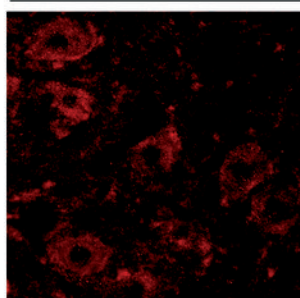
Xbp1

NeuN

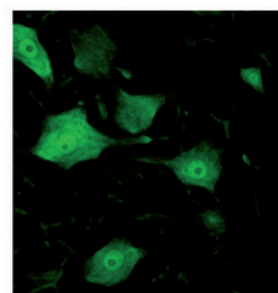
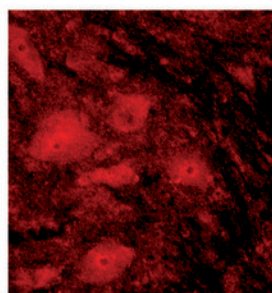
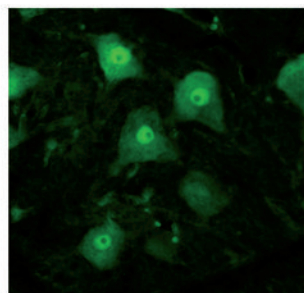
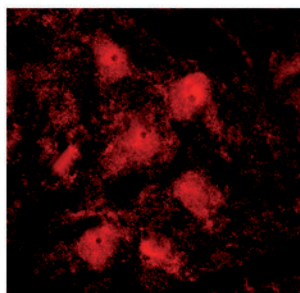
XBP1

NeuN

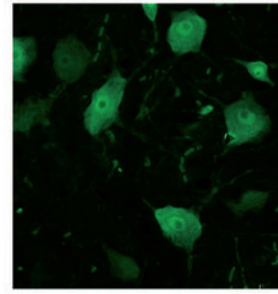
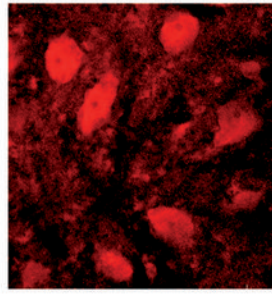
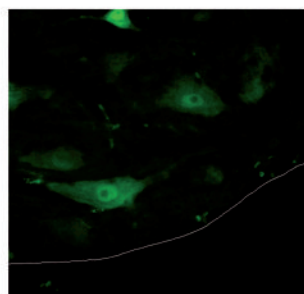
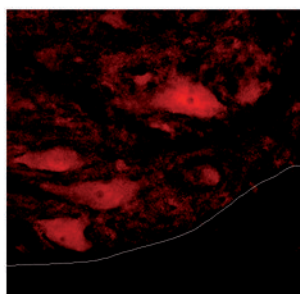
c



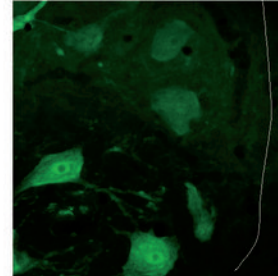
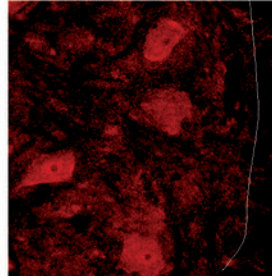
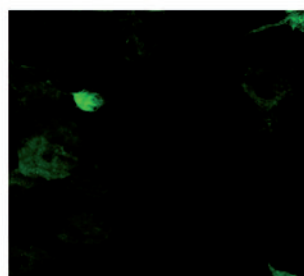
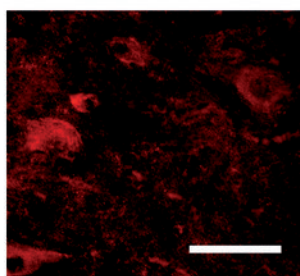
3dpo

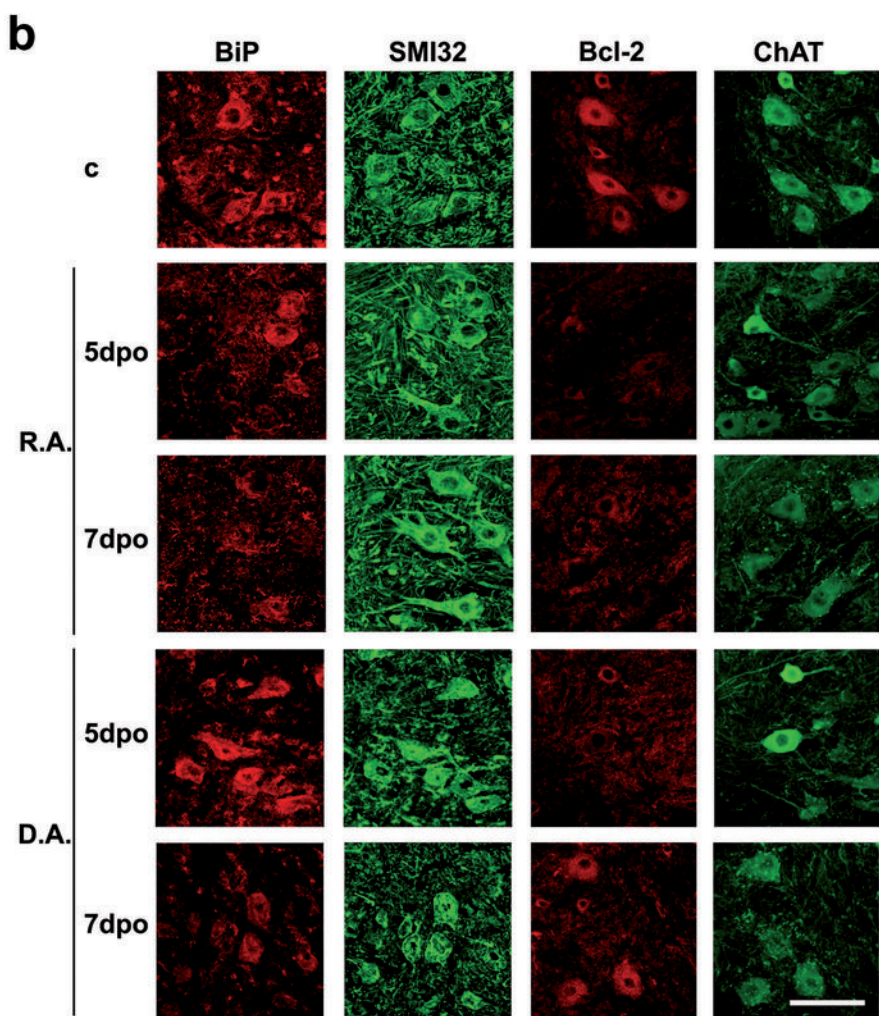
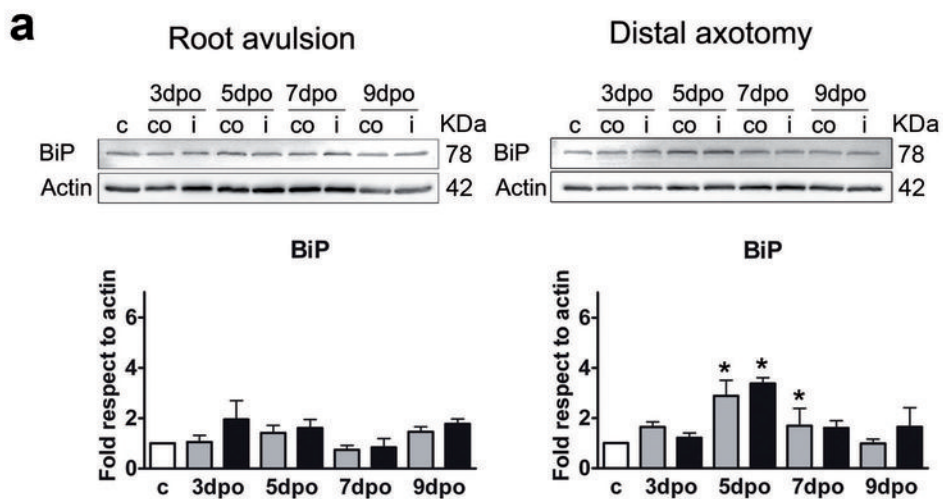


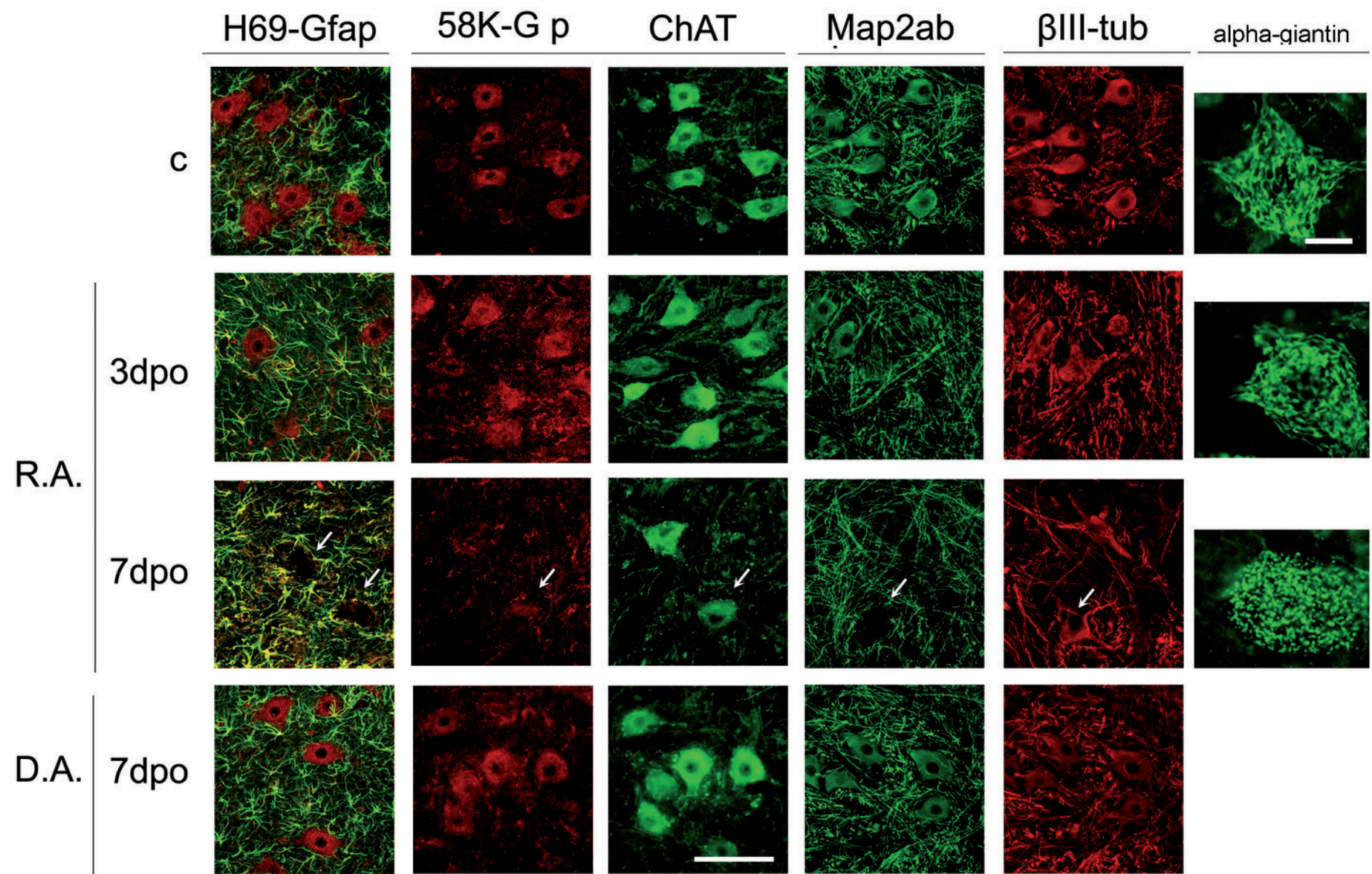
5dpo



7dpo



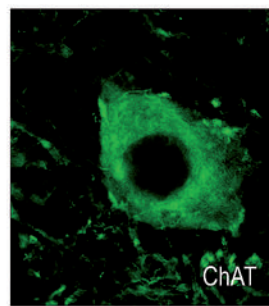
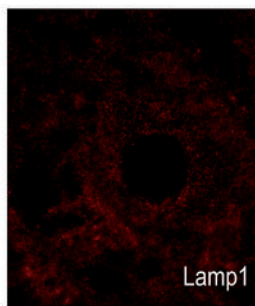
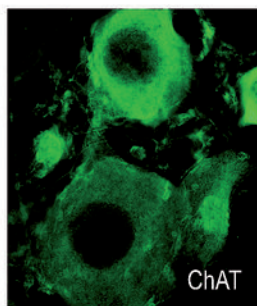
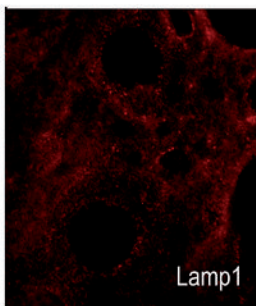




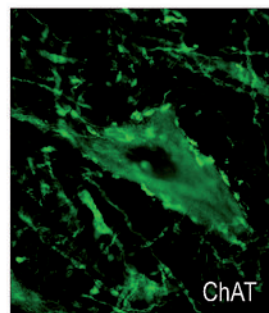
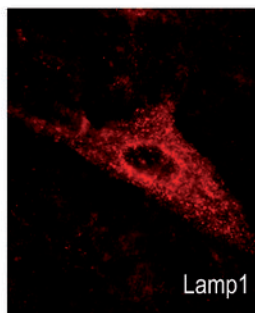
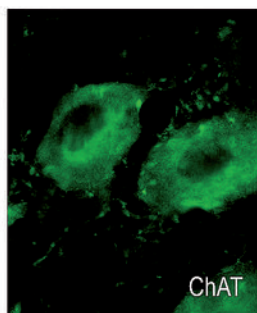
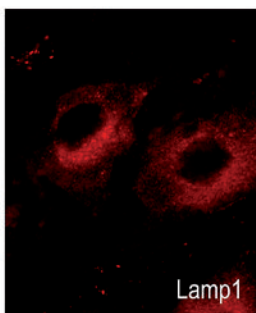
Root Avulsion

Distal Axotomy

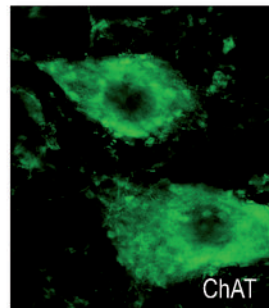
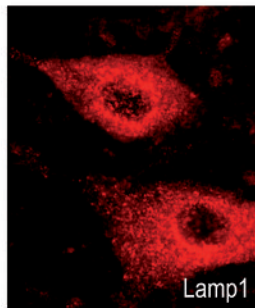
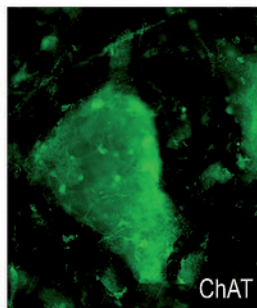
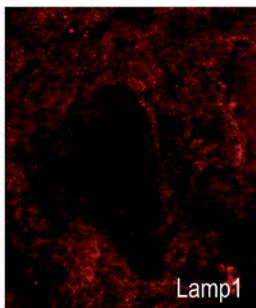
control



3dpo



5dpo



5dpo

