



**HAL**  
open science

## Hot-spots nanostructuration: Towards controlled Single Molecule Surface Enhanced Raman Scattering sensing

Jeremie Margueritat, H. Gehan, J. Grand, Giovanni Levi, J. Aubard, N. Félidj, O. Lecarme, T. Pinedo, David Peyrade, Alexandre Bouhelier, et al.

### ► To cite this version:

Jeremie Margueritat, H. Gehan, J. Grand, Giovanni Levi, J. Aubard, et al.. Hot-spots nanostructuration: Towards controlled Single Molecule Surface Enhanced Raman Scattering sensing. AIP Conference Proceedings, 2010, 1267 (1), pp.984-985. 10.1063/1.3482927 . hal-00623555

**HAL Id: hal-00623555**

**<https://hal.science/hal-00623555>**

Submitted on 28 Feb 2024

**HAL** is a multi-disciplinary open access archive for the deposit and dissemination of scientific research documents, whether they are published or not. The documents may come from teaching and research institutions in France or abroad, or from public or private research centers.

L'archive ouverte pluridisciplinaire **HAL**, est destinée au dépôt et à la diffusion de documents scientifiques de niveau recherche, publiés ou non, émanant des établissements d'enseignement et de recherche français ou étrangers, des laboratoires publics ou privés.

# Hot-spots nanostructuration: Towards controlled Single Molecule Surface Enhanced Raman Scattering sensing

J. Margueritat<sup>a,b</sup>, H. Gehan<sup>a</sup>, J. Grand<sup>a</sup>, G. Lévi<sup>a</sup>, J. Aubard<sup>a</sup>, N. Félidj<sup>a</sup>, O. Lecarme<sup>b</sup>, T. Pinedo<sup>b</sup>, D. Peyrade<sup>b</sup>, A. Bouhelier<sup>c</sup>, G. Colas-Des-Francis<sup>c</sup>, L. Markey<sup>c</sup>, C. Marco de Lucas<sup>c</sup>, A. Dereux<sup>c</sup>, and E. Finot<sup>c</sup>

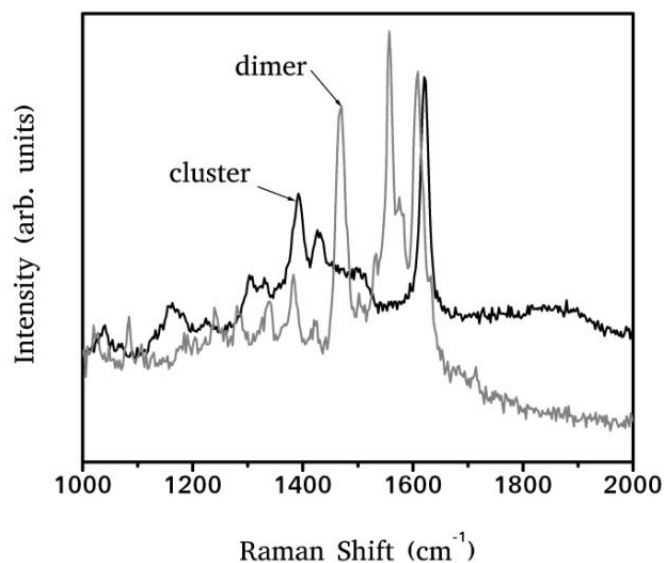
<sup>a</sup> *Interface, Traitements, Organisations et Dynamique des Systèmes, Université Paris7-Denis Diderot, UMR 7086, Bâtiment Lavoisier, 15 Rue Jean Antoine de Baïf 75205 Paris France.*

<sup>b</sup> *Laboratoire des Technologies de la Microélectronique, CNRS UMR 5129, 17 Rue des Martyrs, 38054, Grenoble, France.*

<sup>c</sup> *Laboratoire Interdisciplinaire Carnot de Bourgogne, CNRS UMR 5209, Université de Bourgogne, 9 Avenue Alain Savary, Dijon, France*

One of the challenges of the last decade is to control the assembly of gold or silver colloidal nanoparticles (NPs) onto a surface, in order to optimize the effects of surface enhancement. This reproducible and controlled nanostructuration could be useful to systematic investigation of the mechanism of surface enhanced Raman scattering (SERS)<sup>1</sup>. The fabrication of structures containing few colloidal NPs with controlled characteristics (gap, size and number of colloids...) and precisely localized onto a substrate, is particularly interesting for SERS application. The electromagnetic field concentrated within the gap<sup>2</sup>, namely “hot-spots”, is strongly enhanced due to near field coupling between NPs, and the resulting enhancement factors allow to detect a few molecules. Until now, the study of these hot-spots, was difficult, due to the lack of fabrication techniques.

In order to demonstrate that dimers of NPs are particularly suitable for polarization analysis and efficient for SM-SERS sensing we present the SERS study of arrangements of colloidal NPs immobilized by two different techniques. One coupling e-beam lithography (EBL) and chemical immobilization with 40 nm diameter colloidal NPs, the second coupling EBL and capillarity force assembly with 100 nm diameter colloidal NPs<sup>3</sup>. In order to study such structures, methylene blue (MB) has been used as probe molecule. The structures have been studied by SERS and confocal imaging as a function of polarization state, number, and size of colloidal NPs. The dimer of NPs was estimated to be the most efficient arrangement for SM-SERS. In particular, the comparison between SERS spectrum of dimer of NPs and NPs clusters revealed the existence of new Raman lines in the former case (**Figure 1**). It is likely due to the fact that different MB molecular structures are excited in the various SERS regimes.



**FIGURE 1.** SERS spectra of methylene blue obtained at 633 nm on a cluster of NPs (black curve), and on an isolated dimer of NPs (grey curve).

## ACKNOWLEDGMENTS

This work was supported by the contracts ANTARES 007-NANO-006 and DGA REI 2007-34-026.

## REFERENCES

1. E. Le Ru, J. Grand, N. Felidj, J. Aubard, G. Levi, A. Hohenau, J.R. Krenn, E. Blackie, and P. Etchegoin, *J.Phys.Chem*, **112**, 8117 (2008)
2. J. Berthelot, A. Bouhelier, C. Huang, J. Margueritat, G. Colas-des-Francis, E. Finot, J.C. Weeber, A. Dereux, S. Kostcheev, H. Ibn El Ahrach, A.L. Baudrion, J. Plain, R. Bachelot, P. Royer, and G. P. Wiederrecht, *Nanoletters*, **9** (11), 3914-3921 (2009).
3. T. Pinedo Rivera, O. Lecarme, J. Hartmann, R.L. Inglebert, and D. Peyrade, *Microelectronic Engineering*, **86**, 1089-1092 (2009).