



HAL
open science

Nested iterative algorithms for convex constrained image recovery problems

Caroline Chaux, Jean-Christophe Pesquet, Nelly Pustelnik

► **To cite this version:**

Caroline Chaux, Jean-Christophe Pesquet, Nelly Pustelnik. Nested iterative algorithms for convex constrained image recovery problems. *SIAM Journal on Imaging Sciences*, 2009, 2 (2), pp.730-762. hal-00621932v1

HAL Id: hal-00621932

<https://hal.science/hal-00621932v1>

Submitted on 11 Sep 2011 (v1), last revised 14 Dec 2012 (v2)

HAL is a multi-disciplinary open access archive for the deposit and dissemination of scientific research documents, whether they are published or not. The documents may come from teaching and research institutions in France or abroad, or from public or private research centers.

L'archive ouverte pluridisciplinaire **HAL**, est destinée au dépôt et à la diffusion de documents scientifiques de niveau recherche, publiés ou non, émanant des établissements d'enseignement et de recherche français ou étrangers, des laboratoires publics ou privés.

Nested iterative algorithms for convex constrained image recovery problems*

Caroline Chaux

Jean-Christophe Pesquet

Nelly Pustelnik †

July 13, 2009

Abstract

The objective of this paper is to develop methods for solving image recovery problems subject to constraints on the solution. More precisely, we will be interested in problems which can be formulated as the minimization over a closed convex constraint set of the sum of two convex functions f and g , where f may be nonsmooth and g is differentiable with a Lipschitz-continuous gradient. To reach this goal, we derive two types of algorithms that combine forward-backward and Douglas–Rachford iterations. The weak convergence of the proposed algorithms is proved. In the case when the Lipschitz-continuity property of the gradient of g is not satisfied, we also show that, under some assumptions, it remains possible to apply these methods to the considered optimization problem by making use of a quadratic extension technique. The effectiveness of the algorithms is demonstrated for two wavelet-based image restoration problems involving a signal-dependent Gaussian noise and a Poisson noise, respectively.

1 Introduction

Wavelet decompositions [34] proved their efficiency in solving many inverse problems. More recently, frame representations such as bandlets [32], curvelets [11], grouplets [35], or dual-trees [42, 15] have gained much popularity. These linear tools provide geometrical representations of images, and they are able to easily incorporate a priori information (e.g., via some simple statistical models) on the data. Variational or Bayesian formulations of inverse problems using such representations often lead to the minimization of convex objective functions including a nondifferentiable term having a sparsity promoting role [13, 38, 3, 12, 43, 19].

In restoration problems, the observed data are corrupted by a linear operator and a noise which is not necessarily additive. To solve this problem, one can adopt a variational approach, aiming at minimizing the sum of two functions f and g over a convex set C in the transform domain. Throughout the paper, f and g are assumed to be in the class $\Gamma_0(\mathcal{H})$ of lower semicontinuous convex functions taking their values in $]-\infty, +\infty]$ which are proper (i.e., not identically equal to $+\infty$) and defined on a real separable Hilbert space \mathcal{H} . Then, our objective is to solve the following problem.

*Part of this work appeared in the conference proceedings of EUSIPCO 2008 [40]. This work was supported by the Agence Nationale de la Recherche under grant ANR-05-MMSA-0014-01.

†C. Chaux, J.-C. Pesquet and N. Pustelnik are with the Université Paris-Est, Institut Gaspard Monge and CNRS-UMR 8049, 77454 Marne-la-Vallée Cedex 2, France. Phone: +33 1 60 95 77 39, E-mail: {caroline.chaux, jean-christophe.pesquet, nelly.pustelnik}@univ-paris-est.fr.

Problem 1.1 *Let C be a nonempty closed convex subset of \mathcal{H} . Let f and g be in $\Gamma_0(\mathcal{H})$, where g is differentiable on \mathcal{H} with a β -Lipschitz-continuous gradient for some $\beta \in]0, +\infty[$.*

$$\text{Find} \quad \min_{x \in C} f(x) + g(x).$$

Problem 1.1 is equivalent to minimizing $f + g + \iota_C$, where ι_C denotes the indicator function of C , i.e.,

$$(\forall x \in \mathcal{H}) \quad \iota_C(x) = \begin{cases} 0 & \text{if } x \in C, \\ +\infty & \text{otherwise.} \end{cases}$$

Up to now, many authors devoted their works to the unconstrained case, i.e., $C = \mathcal{H}$. So-called thresholded Landweber algorithms belonging to the more general class of forward-backward optimization methods were proposed in [28, 5, 22, 9] in order to solve the problem numerically. Daubechies, Defrise, and De Mol [22] investigated the convergence of these algorithms in the particular case when g is a quadratic function and f is a weighted ℓ^p -norm with $p \in [1, 2]$. These approaches were put into a more general convex analysis framework in [20] and were extended to frame representations in [14]. Attention was also paid to the improvement of the convergence speed of the forward-backward algorithm in [7] for some specific choices of f and g . In [45], an accelerated method was suggested in the specific case of a deconvolution in a Shannon wavelet basis. Then, a Douglas–Rachford algorithm relaxing the assumption of differentiability of g was introduced in [18]. In recent works [23, 24], a variational approach, which is grounded on a judicious use of the Anscombe transform, was developed for the deconvolution of data contaminated by Poisson noise. A modification of the forward-backward algorithm was subsequently proposed in finite dimension in order to solve the associated optimization problem. Additional comments concerning this approach will be given in sections 3.2.2 and 5.4. A key tool in the study of the aforementioned methods is the proximity operator introduced by Moreau in 1962 [36, 37]. The proximity operator of $f \in \Gamma_0(\mathcal{H})$ is $\text{prox}_f: \mathcal{H} \rightarrow \mathcal{H}: x \mapsto \arg \min_{y \in \mathcal{H}} \frac{1}{2} \|y - x\|^2 + f(y)$. We thus see that prox_{ι_C} reduces to the projection P_C onto the convex set C . The function f in Problem 1.1 may be nonsmooth, and, actually, it is often chosen as an ℓ^1 -norm, in which case its proximity operator reduces to a componentwise soft-thresholding [20]. In [19], the authors derived the concept of proximal thresholding by considering a larger set of nondifferentiable convex functions.

The goal of this paper is to propose iterative algorithms allowing us to solve Problem 1.1 when $C \neq \mathcal{H}$. The relevance of the proposed methods is shown for image recovery problems where convex constraints on the solution need to be satisfied.

In section 2, we start by recalling some properties of the proximity operator. Then, in section 3 we briefly describe the forward-backward and Douglas–Rachford methods. As the proximity operator of the sum of the indicator function of a convex set and a function in $\Gamma_0(\mathcal{H})$ cannot be easily expressed in general, we propose two iterative methods to compute this operator: the first one is a forward-backward algorithm, whereas the second one is a Douglas–Rachford algorithm. We also investigate the specific convergence properties of these two algorithms. In section 4, we derive two iterative methods to solve Problem 1.1, and their convergence behaviors are studied. Finally, in section 5, these algorithms are applied to a class of image recovery problems. In this case, the Lipschitz-continuity property of the gradient of g is not satisfied in the considered maximum a posteriori (MAP) criterion. To overcome this difficulty, a quadratic extension technique providing a lower approximation of the objective function is introduced. Numerical results concerning deconvolution problems in the presence of signal-dependent Gaussian noise or Poisson noise are then provided.

2 Some properties of proximity operators

As already mentioned, the proximity operator of $\iota_C + f$ plays a key role in our approach. Some useful results for the calculation of $\text{prox}_{\iota_C + f}$ are first recalled. Subsequently, the domain of a function $f : \mathcal{H} \rightarrow]-\infty, +\infty]$ is denoted by $\text{dom } f = \{x \in \mathcal{H} \mid f(x) < +\infty\}$.

Proposition 2.1 (see [18, Proposition 12]) *Let $f \in \Gamma_0(\mathcal{H})$, and let C be a closed convex subset of \mathcal{H} such that $C \cap \text{dom } f \neq \emptyset$. Then the following properties hold.*

(i) $(\forall x \in \mathcal{H}) \text{prox}_f x \in C \Rightarrow \text{prox}_{\iota_C + f} x = \text{prox}_f x$.

(ii) *Suppose that $\mathcal{H} = \mathbb{R}$. Then*

$$\text{prox}_{\iota_C + f} = P_C \circ \text{prox}_f. \quad (1)$$

Note that the second part of this proposition can be generalized, yielding the following result which appears also as an extension of [14, Proposition 2.10] when $C \neq \mathcal{H}$.

Proposition 2.2 *Let \mathbb{K} be a nonempty subset of \mathbb{N} , $(o_k)_{k \in \mathbb{K}}$ be an orthonormal basis of \mathcal{H} , and $(\varphi_k)_{k \in \mathbb{K}}$ be functions in $\Gamma_0(\mathbb{R})$. Set*

$$f : \mathcal{H} \rightarrow]-\infty, +\infty]: x \mapsto \sum_{k \in \mathbb{K}} \varphi_k(\langle x, o_k \rangle). \quad (2)$$

Let

$$C = \bigcap_{k \in \mathbb{K}} \{x \in \mathcal{H} \mid \langle x, o_k \rangle \in C_k\}, \quad (3)$$

where $(C_k)_{k \in \mathbb{K}}$ are closed intervals in \mathbb{R} such that $(\forall k \in \mathbb{K}) C_k \cap \text{dom } \varphi_k \neq \emptyset$.

Suppose that either \mathbb{K} is finite, or there exists a subset \mathbb{L} of \mathbb{K} such that

(i) $\mathbb{K} \setminus \mathbb{L}$ is finite;

(ii) $(\forall k \in \mathbb{L}) \varphi_k \geq \varphi_k(0) = 0$ and $0 \in C_k$.

Then,

$$(\forall x \in \mathcal{H}) \quad \text{prox}_{\iota_C + f} x = \sum_{k \in \mathbb{K}} \pi_k o_k, \quad (4)$$

where

$$\pi_k = \begin{cases} \inf C_k & \text{if } \text{prox}_{\varphi_k} \langle x, o_k \rangle < \inf C_k, \\ \sup C_k & \text{if } \text{prox}_{\varphi_k} \langle x, o_k \rangle > \sup C_k, \\ \text{prox}_{\varphi_k} \langle x, o_k \rangle & \text{otherwise.} \end{cases} \quad (5)$$

Proof. Due to the form of f and C , one can write

$$(\forall x \in \mathcal{H}) \quad (f + \iota_C)(x) = \sum_{k \in \mathbb{K}} (\varphi_k + \iota_{C_k})(\langle x, o_k \rangle).$$

For every $k \in \mathbb{K}$, $\varphi_k + \iota_{C_k} \in \Gamma_0(\mathbb{R})$ since $\varphi_k \in \Gamma_0(\mathbb{R})$ and C_k is assumed to be a closed convex set having a nonempty intersection with $\text{dom } \varphi_k$. If \mathbb{K} is not finite, in view of assumption (ii), we have $(\forall k \in \mathbb{L}) \varphi_k + \iota_{C_k} \geq (\varphi_k + i_{C_k})(0) = 0$. From [14, Remark 3.2(ii) and Proposition 2.10], it can be deduced that

$$(\forall x \in \mathcal{H}) \quad \text{prox}_{f+\iota_C} x = \sum_{k \in \mathbb{K}} (\text{prox}_{\varphi_k + \iota_{C_k}} \langle x, o_k \rangle) o_k. \quad (6)$$

On the other hand, since, for every $k \in \mathbb{K}$, C_k is a closed interval in \mathbb{R} such that $C_k \cap \text{dom } \varphi_k \neq \emptyset$, it follows from Proposition 2.1(ii) that

$$\begin{aligned} \text{prox}_{\varphi_k + \iota_{C_k}} \langle x, o_k \rangle &= (P_{C_k} \circ \text{prox}_{\varphi_k})(\langle x, o_k \rangle) \\ &= \begin{cases} \inf C_k & \text{if } \text{prox}_{\varphi_k} \langle x, o_k \rangle < \inf C_k, \\ \text{prox}_{\varphi_k} \langle x, o_k \rangle & \text{if } \text{prox}_{\varphi_k} \langle x, o_k \rangle \in C_k, \\ \sup C_k & \text{if } \text{prox}_{\varphi_k} \langle x, o_k \rangle > \sup C_k. \end{cases} \end{aligned} \quad (7)$$

Combining (6) and (7) yields (4) and (5). \square

A function f (resp., convex C) satisfying (2) (resp., (3)) will be called *separable*. Note that (4) and (5) imply that (1) holds. However, this relation has been proved under the restrictive assumption that both f and C are separable. In general, when either f or C is not separable, (1) is no longer valid. Let us give two simple counterexamples to illustrate this fact.

Example 2.3 Let $\mathcal{H} = \mathbb{R}^2$ and f be the function defined by $(\forall x \in \mathbb{R}^2) f(x) = \frac{1}{2}x^\top \Lambda x$ with $\Lambda = \begin{pmatrix} 1 & \Lambda_{1,2} \\ \Lambda_{1,2} & \Lambda_{2,2} \end{pmatrix}$, where $\Lambda_{2,2} \geq 0$ and $|\Lambda_{1,2}| \leq \Lambda_{2,2}^{1/2}$. Let $C = [-1, 1]^2$. This convex set is separable with respect to the canonical basis of \mathbb{R}^2 .

Now, set $x = 2(\Lambda_{1,2}, 1 + \Lambda_{2,2})^\top$. After some calculations (see Appendix A), one obtains

- $P_C(\text{prox}_f x) = (0, 1)^\top$,
- $\text{prox}_{\iota_C + f} x = (\pi, 1)^\top$, where

$$\pi = \begin{cases} \frac{\Lambda_{1,2}}{2} & \text{if } \Lambda_{1,2} \in [-2, 2], \\ 1 & \text{if } \Lambda_{1,2} > 2, \\ -1 & \text{if } \Lambda_{1,2} < -2. \end{cases} \quad (8)$$

We conclude that (1) is not satisfied as soon as $\Lambda_{1,2} \neq 0$; that is, f is not separable.

Example 2.4 Let $\mathcal{H} = \mathbb{R}^2$. Consider the separable function defined by $(\forall x = (x^{(1)}, x^{(2)})^\top \in \mathbb{R}^2) f(x) = (1 + \Lambda_{1,2})(x^{(1)})^2 + (1 - \Lambda_{1,2})(x^{(2)})^2$, where $0 < |\Lambda_{1,2}| \leq 1$. Let the nonseparable convex set C be defined by

$$C = \{x = (x^{(1)}, x^{(2)})^\top \in \mathbb{R}^2 \mid \max(|x^{(1)} - x^{(2)}|, |x^{(1)} + x^{(2)}|) \leq \sqrt{2}\}.$$

In this case, it is shown in Appendix B that (1) does not hold.

In summary, for an arbitrary function in $\Gamma_0(\mathcal{H})$ and an arbitrary closed convex set, we cannot trust (1) to determine the proximity operator of the sum of this function and the indicator function of the convex set. In the next section, we will propose efficient approaches to computing the desired proximity operator in a general setting.

Other more classical properties of the proximity operator which will be used in this paper are provided in what follows.

Proposition 2.5 (i) If $f = h + \kappa \langle \cdot, x \rangle$, where $h \in \Gamma_0(\mathcal{H})$, $x \in \mathcal{H}$, and $\kappa \in \mathbb{R}$, then $\text{prox}_f = \text{prox}_h(\cdot - \kappa x)$.

(ii) If $f = h + \vartheta \|\cdot\|^2/2$, where $h \in \Gamma_0(\mathcal{H})$ and $\vartheta \in]0, +\infty[$, then

(a) $\text{prox}_f = \text{prox}_{(1+\vartheta)^{-1}h}(\cdot/(1+\vartheta))$,

(b) $(\forall (y, z) \in \mathcal{H}^2) \langle \text{prox}_f y - \text{prox}_f z, y - z \rangle \geq (1+\vartheta) \|\text{prox}_f y - \text{prox}_f z\|^2$, and

(c) prox_f is strictly contractive¹ with constant $(1+\vartheta)^{-1}$.

Proof. Properties (i) and (ii)(a) result from straightforward calculations [20, Lemma 2.6]. (ii)(b) follows from the fact that $\text{prox}_{(1+\vartheta)^{-1}h}$ is firmly nonexpansive [20, Lemma 2.4], i.e.,

$$(\forall (y, z) \in \mathcal{H}^2) \quad \langle \text{prox}_{\frac{h}{1+\vartheta}} y - \text{prox}_{\frac{h}{1+\vartheta}} z, y - z \rangle \geq \|\text{prox}_{\frac{h}{1+\vartheta}} y - \text{prox}_{\frac{h}{1+\vartheta}} z\|^2.$$

Thus, by using (ii)(a), we have

$$\begin{aligned} (\forall (y, z) \in \mathcal{H}^2) \quad & \langle \text{prox}_f y - \text{prox}_f z, y - z \rangle \\ &= (1+\vartheta) \left\langle \text{prox}_{\frac{h}{1+\vartheta}} \left(\frac{y}{1+\vartheta} \right) - \text{prox}_{\frac{h}{1+\vartheta}} \left(\frac{z}{1+\vartheta} \right), \frac{y}{1+\vartheta} - \frac{z}{1+\vartheta} \right\rangle \\ &\geq (1+\vartheta) \left\| \text{prox}_{\frac{h}{1+\vartheta}} \left(\frac{y}{1+\vartheta} \right) - \text{prox}_{\frac{h}{1+\vartheta}} \left(\frac{z}{1+\vartheta} \right) \right\|^2 \\ &= (1+\vartheta) \|\text{prox}_f y - \text{prox}_f z\|^2. \end{aligned}$$

Property (ii)(c) can then be deduced by invoking the Cauchy–Schwarz inequality:

$$\begin{aligned} (\forall (y, z) \in \mathcal{H}^2) \quad (1+\vartheta) \|\text{prox}_f y - \text{prox}_f z\|^2 &\leq \langle \text{prox}_f y - \text{prox}_f z, y - z \rangle \\ &\leq \|\text{prox}_f y - \text{prox}_f z\| \|y - z\|. \quad \square \end{aligned}$$

□

Recall that a function $f \in \Gamma_0(\mathcal{H})$ satisfying the assumptions in (ii) is said to be strongly convex with modulus ϑ .

Proposition 2.6 (see [18, Proposition 11]) Let \mathcal{G} be a real Hilbert space, let $f \in \Gamma_0(\mathcal{G})$, and let $L: \mathcal{H} \rightarrow \mathcal{G}$ be a bounded linear operator. Suppose that the composition of L and L^* satisfies $L \circ L^* = \nu \text{Id}$ for some $\nu \in]0, +\infty[$. Then $f \circ L \in \Gamma_0(\mathcal{H})$ and

$$\text{prox}_{f \circ L} = \text{Id} + \nu^{-1} L^* \circ (\text{prox}_{\nu f} - \text{Id}) \circ L. \quad (9)$$

3 Iterative solutions to the minimization of a sum of two convex functions

3.1 Forward-backward approach

Consider the following optimization problem, which is a specialization of Problem 1.1.

¹An operator is strictly contractive with constant β if it is β -Lipschitz-continuous and $\beta \in]0, 1[$.

Problem 3.1 Let f_1 and f_2 be two functions in $\Gamma_0(\mathcal{H})$ such that $\text{Argmin } f_1 + f_2 \neq \emptyset$ and f_2 is differentiable on \mathcal{H} with a β -Lipschitz-continuous gradient for some $\beta \in]0, +\infty[$.

$$\text{Find } \min_{x \in \mathcal{H}} f_1(x) + f_2(x).$$

As mentioned in the introduction, the forward-backward algorithm is an effective method to solve the above problem.

3.1.1 Algorithm [20, eq. (3.6)]

Let $x_0 \in \mathcal{H}$ be an initial value. The algorithm constructs a sequence $(x_n)_{n \in \mathbb{N}}$ by setting, for every $n \in \mathbb{N}$,

$$x_{n+1} = x_n + \lambda_n (\text{prox}_{\gamma_n f_1}(x_n - \gamma_n \nabla f_2(x_n)) + b_n) + a_n - x_n, \quad (10)$$

where $\gamma_n > 0$ is the algorithm step-size, $\lambda_n > 0$ is a relaxation parameter, and $a_n \in \mathcal{H}$ (resp., $b_n \in \mathcal{H}$) represents an error allowed in the computation of the proximity operator (resp., the gradient). The weak convergence of $(x_n)_{n \in \mathbb{N}}$ to a solution to Problem 3.1 is then guaranteed provided that we assume the following.

Assumption 3.1 (i) $0 < \underline{\gamma} \leq \bar{\gamma} < 2\beta^{-1}$, where $\underline{\gamma} = \inf_{n \in \mathbb{N}} \gamma_n$ and $\bar{\gamma} = \sup_{n \in \mathbb{N}} \gamma_n$.

(ii) $(\forall n \in \mathbb{N}) 0 < \underline{\lambda} \leq \lambda_n \leq 1$.

(iii) $\sum_{n \in \mathbb{N}} \|a_n\| < +\infty$ and $\sum_{n \in \mathbb{N}} \|b_n\| < +\infty$.

More details concerning this algorithm can be found in [20, 14], and conditions for the strong convergence of the algorithm are also given in [19]. An additional result which will be useful in this paper is the following lemma.

Lemma 3.2 Suppose that Assumptions 3.1(i) and (ii) as well as the assumptions of Problem 3.1 hold. If f_1 is a strongly convex function with modulus ϑ , then the forward-backward algorithm in (10) with $a_n \equiv b_n \equiv 0$ converges linearly to the unique solution \tilde{x} to Problem 3.1. More precisely, we have

$$(\forall n \in \mathbb{N}) \quad \|x_n - \tilde{x}\| \leq \left(1 - \frac{\underline{\lambda} \underline{\gamma} \vartheta}{1 + \underline{\gamma} \vartheta}\right)^n \|x_0 - \tilde{x}\|. \quad (11)$$

Proof. Since $\text{Argmin } f_1 + f_2 \neq \emptyset$ and f_1 is strongly (thus strictly) convex, there exists a unique minimizer \tilde{x} of $f_1 + f_2$. Then, \tilde{x} is a fixed point of the forward-backward algorithm in (10) when $a_n \equiv b_n \equiv 0$. Thus, we have, for all $n \in \mathbb{N}$,

$$x_{n+1} - \tilde{x} = (1 - \lambda_n)(x_n - \tilde{x}) + \lambda_n (\text{prox}_{\gamma_n f_1}(x_n - \gamma_n \nabla f_2(x_n)) - \text{prox}_{\gamma_n f_1}(\tilde{x} - \gamma_n \nabla f_2(\tilde{x}))),$$

which yields

$$\begin{aligned} \|x_{n+1} - \tilde{x}\| &\leq (1 - \lambda_n) \|x_n - \tilde{x}\| \\ &\quad + \lambda_n \|\text{prox}_{\gamma_n f_1}(x_n - \gamma_n \nabla f_2(x_n)) - \text{prox}_{\gamma_n f_1}(\tilde{x} - \gamma_n \nabla f_2(\tilde{x}))\|. \end{aligned}$$

Since f_1 has been assumed strongly convex with modulus ϑ , $\gamma_n f_1$ is strongly convex with modulus $\gamma_n \vartheta$, and, according to Assumption 3.1(i), it is also strongly convex with modulus $\underline{\gamma} \vartheta$. We deduce from Proposition 2.5(ii)(c) that $\text{prox}_{\gamma_n f_1}$ is strictly contractive with constant $(1 + \underline{\gamma} \vartheta)^{-1}$. Hence, we have

$$\|x_{n+1} - \tilde{x}\| \leq (1 - \lambda_n)\|x_n - \tilde{x}\| + \frac{\lambda_n}{1 + \underline{\gamma}\vartheta} \|x_n - \gamma_n \nabla f_2(x_n) - \tilde{x} + \gamma_n \nabla f_2(\tilde{x})\|.$$

Recall that an operator $R : \mathcal{H} \rightarrow \mathcal{H}$ is nonexpansive if $(\forall (y, z) \in \mathcal{H}^2) \|R(y) - R(z)\| \leq \|y - z\|$. An operator $T : \mathcal{H} \rightarrow \mathcal{H}$ is α -averaged with $\alpha \in]0, 1[$ if $T = (1 - \alpha)\text{Id} + \alpha R$, where R is a nonexpansive operator.

Since f_2 is a differentiable convex function having a β -Lipschitz-continuous gradient with $\beta > 0$, we deduce from the Baillon–Haddad theorem [4] that $\nabla f_2/\beta$ is $1/2$ -average. As $\gamma_n \in]0, 2/\beta[$, by using [17, Lemma 2.3], $\text{Id} - \gamma_n \nabla f_2$ is $\frac{\underline{\gamma}\beta}{2}$ -averaged, and it is therefore nonexpansive (see [17, Lemma 2.1(ii)]).

This entails that

$$\|x_n - \gamma_n \nabla f_2(x_n) - \tilde{x} + \gamma_n \nabla f_2(\tilde{x})\| \leq \|x_n - \tilde{x}\|,$$

and, consequently,

$$\|x_{n+1} - \tilde{x}\| \leq \left(1 - \frac{\lambda_n \underline{\gamma}\vartheta}{1 + \underline{\gamma}\vartheta}\right) \|x_n - \tilde{x}\| \leq \left(1 - \frac{\underline{\lambda}\underline{\gamma}\vartheta}{1 + \underline{\gamma}\vartheta}\right) \|x_n - \tilde{x}\|,$$

which results in (11). \square

The linear convergence of the forward-backward algorithm was also proved in [8, 16] under different assumptions.

3.1.2 Computation of $\text{prox}_{\iota_C + \kappa g}$

Let $\kappa > 0$ and g be a differentiable function with a β -Lipschitz-continuous gradient, where $\beta \in]0, +\infty[$. Let C be a closed convex set such that $C \neq \emptyset$. Then, for every $x \in \mathcal{H}$, the determination of $\text{prox}_{\iota_C + \kappa g} x$ can be viewed as a minimization problem of the form of Problem 3.1. Indeed, by using the definition of the proximity operator, we have

$$(\forall x \in \mathcal{H}) \quad \text{prox}_{\kappa g + \iota_C} x = \arg \min_{y \in \mathcal{H}} \frac{1}{2} \|y - x\|^2 + \kappa g(y) + \iota_C(y).$$

Now, we can set $f_1 = \frac{1}{2} \|\cdot - x\|^2 + \iota_C$ and $f_2 = \kappa g$. The proximity operator of $\gamma_n f_1$ with $\gamma_n \in]0, +\infty[$ is the proximity operator of $\frac{\gamma_n}{2} \|\cdot\|^2 - \gamma_n \langle \cdot, x \rangle + \iota_C$, which is straightforwardly deduced from Proposition 2.5(i) and (ii)(a):

$$(\forall y \in \mathcal{H}) \quad \text{prox}_{\gamma_n f_1} y = P_C \left(\frac{y + \gamma_n x}{1 + \gamma_n} \right), \quad (12)$$

whereas f_2 has a $\kappa\beta$ -Lipschitz-continuous gradient. In this case, by setting $a_n \equiv b_n \equiv 0$ in algorithm (10), we get

$$(\forall n \in \mathbb{N}) \quad x_{n+1} = x_n + \lambda_n \left(P_C \left(\frac{x_n - \gamma_n (\kappa \nabla g(x_n) - x)}{1 + \gamma_n} \right) - x_n \right) \quad (13)$$

with

$$0 < \underline{\gamma} \leq \gamma_n \leq \bar{\gamma} < 2\kappa^{-1}\beta^{-1}. \quad (14)$$

The obtained algorithm possesses the following properties.

Proposition 3.3 *Suppose that condition (14) and Assumption 3.1(ii) hold. Consider the algorithm in (13) where $x \in \mathcal{H}$. Then,*

(i) we have

$$(\forall n \in \mathbb{N}) \quad \|x_n - \text{prox}_{\iota_C + \kappa g} x\| \leq \rho^n \|x_0 - \text{prox}_{\iota_C + \kappa g} x\|, \quad (15)$$

where

$$\rho = 1 - \frac{\underline{\lambda}\underline{\gamma}}{1 + \underline{\gamma}}; \quad (16)$$

(ii) by setting $x_0 = \text{prox}_{\kappa g} x$, we get

$$\text{prox}_{\kappa g} x \in C \quad \Rightarrow \quad (\forall n \in \mathbb{N}) \quad x_n = \text{prox}_{\iota_C + \kappa g} x. \quad (17)$$

Proof. (i) As f_1 is strongly convex with modulus 1, (15) is obtained by invoking Lemma 3.2.

(ii) If $x_0 = \text{prox}_{\kappa g} x \in C$, then (15) leads to

$$(\forall n \in \mathbb{N}) \quad \|x_n - \text{prox}_{\iota_C + \kappa g} x\| \leq \left(1 - \frac{\underline{\lambda}\underline{\gamma}}{1 + \underline{\gamma}}\right)^n \|\text{prox}_{\kappa g} x - \text{prox}_{\iota_C + \kappa g} x\| = 0, \quad (18)$$

where Proposition 2.1(i) has been used in the last equality. This shows that (17) is satisfied. \square

Remark 3.4 (i) Inequality (15) shows that $(x_n)_{n \in \mathbb{N}}$ converges linearly to $\text{prox}_{\iota_C + \kappa g} x$. Although this inequality provides an upper bound, it suggests choosing λ_n and γ_n as large as possible (i.e., $\lambda_n \equiv 1$ and γ_n close to $2\kappa^{-1}\beta^{-1}$) to optimize the convergence rate. This fact was confirmed by our simulations.

(ii) Proposition 3.3(ii) may appear as a desirable property since Proposition 2.1(i) states that, when $\text{prox}_{\kappa g} x \in C$, $\text{prox}_{\iota_C + \kappa g} x$ takes a trivial form. In this case, the convergence is indeed guaranteed in just one iteration by appropriately initializing the algorithm. Note, however, that $\text{prox}_{\kappa g} x$ may not always be simple to compute, depending on the form of g .

(iii) An alternative numerical method for the computation of $\text{prox}_{\iota_C + \kappa g} x$ would consist of setting $f_1 = \iota_C$ and $f_2 = \frac{1}{2} \|\cdot - x\|^2 + \kappa g$ in the forward-backward algorithm, yielding

$$(\forall n \in \mathbb{N}) \quad x_{n+1} = x_n + \lambda_n (P_C(x_n - \gamma_n(\kappa \nabla g(x_n) + x_n - x)) - x_n)$$

with $0 < \underline{\gamma} \leq \bar{\gamma} < 2(\kappa\beta + 1)^{-1}$. It can be noticed that the forward-backward algorithm then reduces to a projected gradient algorithm [6, Chap. 3., Sect. 3.3.2], [1], when $\lambda_n \equiv 1$. In our experiments, it was, however, observed that the convergence of this algorithm is slower than that in (13), probably due to the fact that $\text{prox}_{\gamma_n f_1}$ is no longer strictly contractive for the second choice of f_1 .

3.2 Douglas–Rachford approach

Let us relax the Lipschitz-continuity assumption in Problem 3.1 and turn our attention to the optimization problem.

Problem 3.2 Let g_1 and g_2 be functions in $\Gamma_0(\mathcal{H})$ such that $\text{Argmin } g_1 + g_2 \neq \emptyset$. Assume that one of the following three conditions is satisfied:

- (i) $\text{dom } g_2 \cap \text{int dom } g_1 \neq \emptyset$.²
- (ii) $\text{dom } g_1 \cap \text{int dom } g_2 \neq \emptyset$.

²The interior (resp., relative interior) of a set S of \mathcal{H} is designated by $\text{int } S$ (resp., $\text{rint } S$).

(iii) \mathcal{H} is finite dimensional and $\text{rint dom } g_1 \cap \text{rint dom } g_2 \neq \emptyset$.

$$\text{Find } \min_{z \in \mathcal{H}} g_1(z) + g_2(z).$$

In the statement of the above problem, the notation differs from that used in Problem 3.1 to emphasize the difference in the assumptions which have been adopted and facilitate the presentation of the algorithms subsequently presented in section 4.

The Douglas–Rachford algorithm, proposed in [33, 25], provides an appealing numerical solution to Problem 3.2, as described next.

3.2.1 Algorithm [18, eq. (19)]

Set $z_0 \in \mathcal{H}$ and compute, for every $m \in \mathbb{N}$,

$$\begin{cases} z_{m+\frac{1}{2}} = \text{prox}_{\kappa g_2} z_m + b_m, \\ z_{m+1} = z_m + \tau_m (\text{prox}_{\kappa g_1} (2z_{m+\frac{1}{2}} - z_m) + a_m - z_{m+\frac{1}{2}}), \end{cases} \quad (19)$$

where $\kappa > 0$, $(\tau_m)_{m \in \mathbb{N}}$ is a sequence of positive reals, and $(a_m)_{m \in \mathbb{N}}$ (resp., $(b_m)_{m \in \mathbb{N}}$) is a sequence of errors in \mathcal{H} allowed in the computation of the proximity operator of κg_1 (resp., κg_2).

Then, $(z_m)_{m \in \mathbb{N}}$ converges weakly to $z \in \mathcal{H}$ [17, Corollary 5.2] such that $\text{prox}_{\kappa g_2} z$ is solution to Problem 3.2, provided that we assume the following.

Assumption 3.5 (i) $(\forall m \in \mathbb{N}) \tau_m \in]0, 2[$ and $\sum_{m \in \mathbb{N}} \tau_m (2 - \tau_m) = +\infty$.

(ii) $\sum_{m \in \mathbb{N}} \tau_m (\|a_m\| + \|b_m\|) < +\infty$.

An alternate convergence result is the following.

Proposition 3.6 *Suppose that the assumptions of Problem 3.2 hold. If g_2 is a strongly convex function, then the Douglas–Rachford algorithm in (19) with $\inf_{m \in \mathbb{N}} \tau_m > 0$, $\sup_{m \in \mathbb{N}} \tau_m \leq 2$, and $a_m \equiv b_m \equiv 0$ is such that $(z_{m+1/2})_{m \in \mathbb{N}}$ converges strongly to the unique solution to Problem 3.2.*

Proof. Let the rprox operator be defined, for every $f \in \Gamma_0(\mathcal{H})$, by

$$\text{rprox}_f = 2\text{prox}_f - \text{Id}. \quad (20)$$

Let us rewrite the Douglas–Rachford iteration in (19) with $a_m \equiv b_m \equiv 0$ as $z_{m+1} = S_m z_m$, where

$$S_m = \tau_m \text{prox}_{\kappa g_1} (\text{rprox}_{\kappa g_2}) + \text{Id} - \tau_m \text{prox}_{\kappa g_2}. \quad (21)$$

For all $(y, y') \in \mathcal{H}^2$, we have

$$\begin{aligned} \|S_m y - S_m y'\|^2 &= \tau_m^2 \|\text{prox}_{\kappa g_1} (\text{rprox}_{\kappa g_2} y) - \text{prox}_{\kappa g_1} (\text{rprox}_{\kappa g_2} y')\|^2 \\ &\quad + 2\tau_m \langle \text{prox}_{\kappa g_1} (\text{rprox}_{\kappa g_2} y) - \text{prox}_{\kappa g_1} (\text{rprox}_{\kappa g_2} y'), y - \tau_m \text{prox}_{\kappa g_2} y - y' + \tau_m \text{prox}_{\kappa g_2} y' \rangle \\ &\quad + \|y - \tau_m \text{prox}_{\kappa g_2} y - y' + \tau_m \text{prox}_{\kappa g_2} y'\|^2. \end{aligned} \quad (22)$$

Since $\kappa g_1 \in \Gamma_0(\mathcal{H})$, $\text{prox}_{\kappa g_1}$ is firmly nonexpansive [20, Lemma 2.4], and the expression in (22) can be upper bounded as follows:

$$\begin{aligned} & \|S_m y - S_m y'\|^2 \\ & \leq \tau_m^2 \langle \text{prox}_{\kappa g_1}(\text{rprox}_{\kappa g_2} y) - \text{prox}_{\kappa g_1}(\text{rprox}_{\kappa g_2} y'), \text{rprox}_{\kappa g_2} y - \text{rprox}_{\kappa g_2} y' \rangle \\ & \quad + 2\tau_m \langle \text{prox}_{\kappa g_1}(\text{rprox}_{\kappa g_2} y) - \text{prox}_{\kappa g_1}(\text{rprox}_{\kappa g_2} y'), y - \tau_m \text{prox}_{\kappa g_2} y - y' + \tau_m \text{prox}_{\kappa g_2} y' \rangle \\ & \quad + \|y - \tau_m \text{prox}_{\kappa g_2} y - y' + \tau_m \text{prox}_{\kappa g_2} y'\|^2, \end{aligned}$$

which yields after simplifications

$$\begin{aligned} \|S_m y - S_m y'\|^2 & \leq \tau_m(2 - \tau_m) \langle \text{prox}_{\kappa g_1}(\text{rprox}_{\kappa g_2} y) - \text{prox}_{\kappa g_1}(\text{rprox}_{\kappa g_2} y'), y - y' \rangle \\ & \quad + \|y - \tau_m \text{prox}_{\kappa g_2} y - y' + \tau_m \text{prox}_{\kappa g_2} y'\|^2. \end{aligned}$$

Using the definition of the operator S_m in (21), we thus obtain, after some simple calculations,

$$\begin{aligned} \|S_m y - S_m y'\|^2 & \leq (2 - \tau_m) \langle S_m y - S_m y', y - y' \rangle + (\tau_m - 1) \|y - y'\|^2 \\ & \quad - \tau_m^2 (\langle \text{prox}_{\kappa g_2} y - \text{prox}_{\kappa g_2} y', y - y' \rangle - \|\text{prox}_{\kappa g_2} y - \text{prox}_{\kappa g_2} y'\|^2). \end{aligned} \quad (23)$$

Let θ be the modulus of the strongly convex function g_2 . Then κg_2 is strongly convex with modulus $\kappa\theta$, and Proposition 2.5(ii)(b) states that the following inequality holds:

$$\langle \text{prox}_{\kappa g_2} y - \text{prox}_{\kappa g_2} y', y - y' \rangle \geq (\kappa\theta + 1) \|\text{prox}_{\kappa g_2} y - \text{prox}_{\kappa g_2} y'\|^2,$$

which combined with (23) leads to

$$\begin{aligned} \|S_m y - S_m y'\|^2 & + \kappa\theta\tau_m^2 \|\text{prox}_{\kappa g_2} y - \text{prox}_{\kappa g_2} y'\|^2 \\ & \leq (2 - \tau_m) \langle S_m y - S_m y', y - y' \rangle + (\tau_m - 1) \|y - y'\|^2. \end{aligned} \quad (24)$$

Now, let \tilde{z} be the unique minimizer of $g_1 + g_2$. Hence, $\tilde{z} = \text{prox}_{\kappa g_2} z$, where z is a fixed point of S_m . Consequently, by setting $y = z_m$ and $y' = z$ in (24), we deduce that

$$\begin{aligned} \|z_{m+1} - z\|^2 + \kappa\theta\tau_m^2 \|z_{m+\frac{1}{2}} - \tilde{z}\|^2 \\ \leq (2 - \tau_m) \langle z_{m+1} - z, z_m - z \rangle + (\tau_m - 1) \|z_m - z\|^2. \end{aligned} \quad (25)$$

Using the fact that

$$2 \langle z_{m+1} - z, z_m - z \rangle = \|z_{m+1} - z\|^2 + \|z_m - z\|^2 - \|z_{m+1} - z_m\|^2,$$

we can rewrite (25) as

$$\tau_m \|z_{m+1} - z\|^2 + (2 - \tau_m) \|z_{m+1} - z_m\|^2 + 2\kappa\theta\tau_m^2 \|z_{m+\frac{1}{2}} - \tilde{z}\|^2 \leq \tau_m \|z_m - z\|^2. \quad (26)$$

Considering Assumption 3.5, $(2 - \tau_m) \|z_{m+1} - z_m\|^2$ is nonnegative, and the left-hand side term of inequality (26) can be lower bounded, yielding

$$\tau_m \|z_{m+1} - z\|^2 + 2\kappa\theta\tau_m^2 \|z_{m+\frac{1}{2}} - \tilde{z}\|^2 \leq \tau_m \|z_m - z\|^2.$$

Finally, by using the assumption that $\underline{\tau} = \inf_{m \in \mathbb{N}} \tau_m > 0$, we obtain

$$\|z_{m+1} - z\|^2 + 2\kappa\theta_{\mathcal{I}}\|z_{m+\frac{1}{2}} - \tilde{z}\|^2 \leq \|z_m - z\|^2. \quad (27)$$

This entails that $\|z_{m+1} - z\|^2 \leq \|z_m - z\|^2$, and, the sequence $(\|z_m - z\|)_{m \in \mathbb{N}}$ being decreasing, there exists $c \in]0, +\infty[$ such that $\lim_{m \rightarrow +\infty} \|z_m - z\| = c$. In turn, from (27), we conclude that $\lim_{m \rightarrow +\infty} z_{m+\frac{1}{2}} = \tilde{z}$, which shows the strong convergence of $(z_{m+1/2})_{m \in \mathbb{N}}$ to the unique minimizer of $g_1 + g_2$. \square

It can be noticed that, although the convergence of the Douglas–Rachford algorithm generally requires that $\tau_m < 2$, the strong convergence is obtained under the above assumptions when $\tau_m = 2$. The limit case of the Douglas–Rachford algorithm corresponding to $\tau_m \equiv 2$ is known as the Peaceman–Rachford algorithm [39, 17].

3.2.2 Computation of $\text{prox}_{\iota_C + \gamma f}$

Let C be a nonempty closed convex set of \mathcal{H} . The Douglas–Rachford algorithm can be used to compute $\text{prox}_{\iota_C + \gamma f}$, where $f \in \Gamma_0(\mathcal{H})$ and γ is a positive constant, using again the definition of the proximity operator:

$$(\forall x \in \mathcal{H}) \quad \text{prox}_{\iota_C + \gamma f} x = \arg \min_{y \in \mathcal{H}} \frac{1}{2} \|y - x\|^2 + \iota_C(y) + \gamma f(y). \quad (28)$$

The above minimization problem appears as a specialization of Problem 3.2 by setting $g_1 = \gamma f$ and $g_2 = \frac{1}{2} \|\cdot - x\|^2 + \iota_C$, provided that one of the following three conditions holds.

- Assumption 3.7** (i) $C \cap \text{int dom } f \neq \emptyset$.
(ii) $\text{dom } f \cap \text{int } C \neq \emptyset$.
(iii) \mathcal{H} is finite dimensional and $\text{rint } C \cap \text{rint dom } f \neq \emptyset$.

Subsequently, we propose using the Douglas–Rachford algorithm in (19) with $a_m \equiv b_m \equiv 0$ to compute the desired proximity operator. Note that both $\text{prox}_{\kappa g_1}$ and $\text{prox}_{\kappa g_2}$ with $\kappa > 0$ have to be calculated to apply this algorithm. In our case, we have

$$\text{prox}_{\kappa g_1} = \text{prox}_{\kappa \gamma f}$$

and, similarly to (12),

$$(\forall z \in \mathcal{H}) \quad \text{prox}_{\kappa g_2} z = P_C \left(\frac{z + \kappa x}{1 + \kappa} \right).$$

The resulting Douglas–Rachford iterations read, for every $m \in \mathbb{N}$,

$$\begin{cases} z_{m+\frac{1}{2}} = P_C \left(\frac{z_m + \kappa x}{1 + \kappa} \right), \\ z_{m+1} = z_m + \tau_m (\text{prox}_{\kappa \gamma f} (2z_{m+\frac{1}{2}} - z_m) - z_{m+\frac{1}{2}}). \end{cases} \quad (29)$$

This algorithm enjoys the following properties.

Proposition 3.8 *Suppose that one of Assumptions 3.7(i), 3.7(ii), or 3.7(iii) holds. Consider the algorithm in (29) where $x \in \mathcal{H}$, $\inf_{m \in \mathbb{N}} \tau_m > 0$, and $\sup_{m \in \mathbb{N}} \tau_m \leq 2$. Then,*

- (i) $(z_{m+\frac{1}{2}})_{m \in \mathbb{N}}$ converges strongly to $\text{prox}_{\iota_C + \gamma f} x$;
(ii) by setting $\kappa = 1$ and $z_0 = 2\text{prox}_{\gamma f} x - x$, we get

$$\text{prox}_{\gamma f} x \in C \quad \Rightarrow \quad (\forall m \in \mathbb{N}) \quad z_{m+\frac{1}{2}} = \text{prox}_{\iota_C + \gamma f} x. \quad (30)$$

Proof. (i) As g_2 is strongly convex with modulus 1, (i) holds by invoking Proposition 3.6.

(ii) Set $\kappa = 1$, $z_0 = 2\text{prox}_{\gamma f}x - x$ with $\text{prox}_{\gamma f}x \in C$. By considering the first iteration of the Douglas–Rachford algorithm ($m = 0$), we have $z_{\frac{1}{2}} = \text{prox}_{\gamma f}x$ and $z_1 = z_0$. So, by induction, $(\forall m \in \mathbb{N}) z_{m+\frac{1}{2}} = \text{prox}_{\gamma f}x$, which is also equal to $\text{prox}_{\iota_C + \gamma f}x$ according to Proposition 2.1(i). \square

Remark 3.9 (i) *As already observed in Remark 3.4(ii), (30) is a desirable property. It shows that the proposed algorithm converges in one iteration when $\text{prox}_{\gamma f}x \in C$, which appears quite consistent in light of Proposition 2.1(i).*

(ii) *Other choices can be envisaged for g_1 and g_2 , namely,*

(a) $g_1 = \frac{1}{2} \|\cdot - x\|^2 + \iota_C$ and $g_2 = \gamma f$,

(b) $g_1 = \frac{1}{2} \|\cdot - x\|^2 + \gamma f$ and $g_2 = \iota_C$,

(c) $g_1 = \iota_C$ and $g_2 = \frac{1}{2} \|\cdot - x\|^2 + \gamma f$.

Nevertheless, the strong convergence of $(z_{m+1/2})_{m \in \mathbb{N}}$ by virtue of Proposition 3.6 is guaranteed only in the third case, whereas property (30) holds only in the first case (when $\kappa = 1$ and $z_0 = x$). The second case was investigated in [24], where the good numerical behavior of the resulting algorithm was demonstrated.

3.3 Discussion

Both algorithms (13) and (29) allow us to determine the proximity operator of the sum of the indicator function of a closed convex set and a function in $\Gamma_0(\mathcal{H})$. The main difference between the two methods is that, in the former one, the convex function needs to be differentiable with a Lipschitz-continuous gradient, whereas the latter requires that the proximity operator of the convex function is easy to compute. In addition, the forward-backward algorithm converges linearly, while we were only able to prove the strong convergence of the Douglas–Rachford algorithm. Also, as we have shown, the two algorithms are consistent with Proposition 2.1(i).

4 Proposed algorithms to minimize $f + g + \iota_C$

We have presented two approaches to minimize the sum of two functions in $\Gamma_0(\mathcal{H})$. We have also seen that these methods can be employed to compute the proximity operator of the sum of the indicator function of a closed convex set C and a function in $\Gamma_0(\mathcal{H})$.

We now come back to the more general form of Problem 1.1, for which we will propose two solutions. Both of them correspond to a combination of the forward-backward and the Douglas–Rachford algorithms.

4.1 First method: Insertion of a forward-backward step in the Douglas–Rachford algorithm

We propose to apply the Douglas–Rachford algorithm as described in section 3.2, when $g_1 = f$ and $g_2 = \iota_C + g$. If we refer to (19), we need to determine $\text{prox}_{\kappa g_1} = \text{prox}_{\kappa f}$ and $\text{prox}_{\kappa g_2} = \text{prox}_{\iota_C + \kappa g}$, where $\kappa > 0$. The main difficulty lies in the computation of the second proximity operator. As proposed in section 3.1.2, we can use a forward-backward algorithm to achieve this goal. The resulting algorithm is as follows.

Algorithm 4.1 ① Set $\underline{\gamma} \in]0, 2\kappa^{-1}\beta^{-1}[$, $\underline{\lambda} \in]0, 1]$, and $\kappa \in]0, +\infty[$. Choose $(\tau_m)_{m \in \mathbb{N}}$ satisfying Assumption 3.5(i).

② Set $m = 0$, $z_0 = z_{-1/2} \in C$.

③ Set $x_{m,0} = z_{m-1/2}$.

④ For $n = 0, \dots, N_m - 1$,

(a) choose $\gamma_{m,n} \in [\underline{\gamma}, 2\kappa^{-1}\beta^{-1}[$ and $\lambda_{m,n} \in [\underline{\lambda}, 1]$;

(b) compute

$$x_{m,n+1} = x_{m,n} + \lambda_{m,n} \left(P_C \left(\frac{x_{m,n} - \gamma_{m,n}(\kappa \nabla g(x_{m,n}) - z_m)}{1 + \gamma_{m,n}} \right) - x_{m,n} \right).$$

⑤ Set $z_{m+\frac{1}{2}} = x_{m,N_m}$.

⑥ Set $z_{m+1} = z_m + \tau_m (\text{prox}_{\kappa f}(2z_{m+\frac{1}{2}} - z_m) - z_{m+\frac{1}{2}})$.

⑦ Increment m ($m \leftarrow m + 1$) and goto ③.

Step ① allows us to set the algorithm parameters, and step ② corresponds to the initialization of the algorithm. At iteration $m \geq 0$, step ④ consists of $N_m \geq 1$ iterations of the forward-backward part of the algorithm, where possibly varying step-sizes $(\gamma_{m,n})_n$ and relaxation parameters $(\lambda_{m,n})_n$ are used. Finally, steps ⑤ and ⑥ correspond to the Douglas–Rachford iteration. Here, the error term a_m in the computation of $\text{prox}_{\kappa f}$ is assumed to be equal to zero, but, due to the finite number of iterations N_m performed in step ④, an error $b_m = z_{m+1/2} - \text{prox}_{\iota_C + \kappa g} z_m$ may be introduced in step ④.

It can be noticed that the forward-backward algorithm has not been initialized in step ③ as suggested by Proposition 3.3(ii). Indeed, as already mentioned, the computation of $\text{prox}_{\kappa g} z_m$ would be generally costly. Furthermore, the initialization in step ③ is useful to guarantee the following properties.

Proposition 4.1 Suppose that Problem 1.1 has a solution and that one of Assumptions 3.7(i), 3.7(ii), or 3.7(iii) holds.

(i) Let $\xi > 0$ and ρ be given by (16). If $\inf g(C) > -\infty$ and, for every $m \in \mathbb{N}$, the positive integer N_m is chosen such that

$$\rho^{N_m} \sqrt{2\kappa} (g(z_0) - \inf g(C))^{1/2} \leq \xi \quad \text{if } m = 0, \quad (4.1a)$$

$$\rho^{N_m-1} (1 + \xi^{-1} \rho^{1-m} \|z_m - z_{m-1}\|) \leq 1 \quad \text{if } m > 0, \quad (4.1b)$$

then $(z_m)_{m \in \mathbb{N}}$ converges weakly to $z \in \mathcal{H}$ such that $\text{prox}_{\iota_C + \kappa g} z$ is a solution to Problem 1.1.

(ii) For every $m \in \mathbb{N}$, $(x_{m,n})_{0 \leq n \leq N_m}$ (and thus $z_{m+1/2}$) lies in C .

Proof. (i) According to Proposition 3.3(i), for every $m \in \mathbb{N}$,

$$(\forall n \in \{0, \dots, N_m\}) \quad \|x_{m,n} - \text{prox}_{\iota_C + \kappa g} z_m\| \leq \rho^n \|x_{m,0} - \text{prox}_{\iota_C + \kappa g} z_m\|$$

and, consequently,

$$\|b_m\| = \|z_{m+1/2} - \text{prox}_{\iota_C + \kappa g} z_m\| \leq \rho^{N_m} \|z_{m-1/2} - \text{prox}_{\iota_C + \kappa g} z_m\|. \quad (32)$$

Let us next show by induction that conditions (4.1a) and (4.1b) allow us to guarantee that

$$\|b_m\| \leq \rho^m \xi. \quad (33)$$

- If $m = 0$, we deduce from (32) that

$$\|b_0\| \leq \rho^{N_0} \|z_0 - \text{prox}_{\iota_C + \kappa g} z_0\|. \quad (34)$$

From the definition of the proximity operator, we have

$$\begin{aligned} (\forall x \in C) \quad & \frac{1}{2} \|z_0 - x\|^2 + \kappa g(x) \\ & \geq \frac{1}{2} \|z_0 - \text{prox}_{\iota_C + \kappa g} z_0\|^2 + \kappa g(\text{prox}_{\iota_C + \kappa g} z_0) \\ & \geq \frac{1}{2} \|z_0 - \text{prox}_{\iota_C + \kappa g} z_0\|^2 + \kappa \inf g(C) \end{aligned}$$

and, since $z_0 \in C$,

$$\|z_0 - \text{prox}_{\iota_C + \kappa g} z_0\|^2 \leq 2\kappa(g(z_0) - \inf g(C)).$$

By combining the latter inequality with (34) and (4.1a), we conclude that $\|b_0\| \leq \xi$.

- Now, let us show that (33) holds for $m > 0$, by assuming that $\|b_{m-1}\| \leq \rho^{m-1}\xi$. Using (32), we have

$$\begin{aligned} \|b_m\| & \leq \rho^{N_m} (\|z_{m-1/2} - \text{prox}_{\iota_C + \kappa g} z_{m-1} + \text{prox}_{\iota_C + \kappa g} z_{m-1} - \text{prox}_{\iota_C + \kappa g} z_m\|) \\ & \leq \rho^{N_m} (\|b_{m-1}\| + \|\text{prox}_{\iota_C + \kappa g} z_{m-1} - \text{prox}_{\iota_C + \kappa g} z_m\|) \\ & \leq \rho^{N_m} (\|b_{m-1}\| + \|z_{m-1} - z_m\|), \end{aligned}$$

where the nonexpansivity of $\text{prox}_{\iota_C + \kappa g}$ has been used in the last inequality. From the induction assumption, we deduce that

$$\|b_m\| \leq \rho^{N_m} (\rho^{m-1}\xi + \|z_{m-1} - z_m\|),$$

which, according to (4.1b), leads to (33).

Then, (33) allows us to claim that Assumption 3.5(ii) is satisfied since

$$\sum_{m \in \mathbb{N}} \tau_m (\|a_m\| + \|b_m\|) \leq 2\xi(1 - \rho)^{-1}.$$

By further noticing that Assumption 3.7 is equivalent to (i) ($\text{dom}(\iota_C + g) \cap \text{int dom } f \neq \emptyset$), (ii) ($\text{dom } f \cap \text{int dom}(\iota_C + g) \neq \emptyset$), or (iii) \mathcal{H} is finite dimensional and ($\text{rint dom } f \cap \text{rint dom}(\iota_C + g) \neq \emptyset$), the conditions for the weak convergence of the Douglas–Rachford algorithm are therefore fulfilled.

(ii) The property can be proved by induction by noticing that $x_{0,0} = z_{-1/2} \in C$ and that $x_{m,n+1}$ is a convex combination of $x_{m,n}$ and the projection onto C of an element of \mathcal{H} . \square

Inequalities (4.1a) and (4.1b) constitute a theoretical guarantee for the convergence of the proposed algorithm rather than a practical guideline for the choice of N_m . In our numerical experiments, these conditions were indeed observed to provide overly pessimistic values of the number of forward-backward iterations to be applied in step ④.

As a consequence of Proposition 4.1(ii), in step ④(b), the gradient of g is evaluated only on C . This means that the assumption of Lipschitz-continuity on the gradient of g is required only on C , and, therefore, the algorithm can be applied to the following more general setting.

Problem 4.1 *Let C be a nonempty closed convex subset of \mathcal{H} . Let f and g be in $\Gamma_0(\mathcal{H})$, where g is differentiable on C with a β -Lipschitz-continuous gradient for some $\beta \in]0, +\infty[$.³*

³That is, there exists an open set containing C on which g is differentiable with a β -Lipschitz-continuous gradient.

$$\text{Find } \min_{x \in C} f(x) + g(x).$$

Note that, in the latter problem, the function g does need to be finite.

4.2 Second method: Insertion of a Douglas–Rachford step in the forward-backward algorithm

For this method, a different association between the functions involved in Problem 1.1 is considered by setting $f_1 = \iota_C + f$ and $f_2 = g$. Since f_2 has then a β -Lipschitz-continuous gradient, we can apply the forward-backward algorithm presented in section 3.1.1. This requires us, however, to compute $\text{prox}_{\gamma_n f_1} = \text{prox}_{\iota_C + \gamma_n f}$, which can be performed with Douglas–Rachford iterations.

Let us summarize the complete form of the second algorithm we propose for solving Problem 1.1.

Algorithm 4.2 ① Choose sequences $(\gamma_n)_{n \in \mathbb{N}}$ and $(\lambda_n)_{n \in \mathbb{N}}$ satisfying Assumptions 3.1(i) and (ii). Set $\underline{\tau} \in]0, 2]$.

② Set $n = 0$, $x_0 \in C$.

③ Set $x'_n = x_n - \gamma_n \nabla g(x_n)$.

④ Set $z_{n,0} = 2\text{prox}_{\gamma_n f} x'_n - x'_n$.

⑤ For $m = 0, \dots, M_n - 1$,

(a) compute $z_{n,m+\frac{1}{2}} = P_C\left(\frac{z_{n,m} + x'_n}{2}\right)$;

(b) choose $\tau_{n,m} \in [\underline{\tau}, 2]$;

(c) compute $z_{n,m+1} = z_{n,m} + \tau_{n,m}(\text{prox}_{\gamma_n f}(2z_{n,m+\frac{1}{2}} - z_{n,m}) - z_{n,m+\frac{1}{2}})$;

(d) if $z_{n,m+1} = z_{n,m}$, then goto ⑥.

⑥ Set $x_{n+1} = x_n + \lambda_n(z_{n,m+\frac{1}{2}} - x_n)$.

⑦ Increment n ($n \leftarrow n + 1$) and goto ③.

We see that step ⑤ consists of at most $M_n \geq 1$ iterations of the Douglas–Rachford algorithm described in section 3.2.2, which is initialized in accordance with Proposition 3.8(ii). Steps ③ and ⑥ correspond to a forward-backward iteration. Let $m_n < M_n$ be the iteration number where the Douglas–Rachford algorithm stops. The error terms involved in step ⑥ are $a_n = z_{n,m_n+\frac{1}{2}} - \text{prox}_{\iota_C + \gamma_n f} x_n$ and $b_n = 0$. The properties of the algorithm are then the following.

Proposition 4.2 Suppose that Problem 1.1 has a solution and one of Assumptions 3.7(i), 3.7(ii), or 3.7(iii) holds.

(i) There exists a sequence of positive integers $(\overline{M}_n)_{n \in \mathbb{N}}$ such that, if $(\forall n \in \mathbb{N}) M_n \geq \overline{M}_n$, then $(x_n)_{n \in \mathbb{N}}$ converges weakly to a solution to Problem 1.1.

(ii) The sequence $(x_n)_{n \in \mathbb{N}}$ lies in C .

Proof. (i) Set $\rho \in]0, 1[$. Let $n \in \mathbb{N}$ and $(z_{n,m})_{m \in \mathbb{N}}$ be defined by iterating steps ⑤(a), (b), and (c). By invoking Proposition 3.8(i), we know that $(z_{n,m+\frac{1}{2}})_{m \in \mathbb{N}}$ converges strongly to $\text{prox}_{\iota_C + \gamma_n f} x'_n$. This implies that there exists $\overline{M}_n \geq 1$ such that

$$(\forall m \in \mathbb{N}) \quad m \geq \overline{M}_n - 1 \quad \Rightarrow \quad \|z_{n,m+\frac{1}{2}} - \text{prox}_{\iota_C + \gamma_n f} x'_n\| \leq \rho^n.$$

If $M_n \geq \overline{M}_n$, we deduce that

$$\|a_n\| = \|z_{n,m_n+\frac{1}{2}} - \text{prox}_{\iota_C + \gamma_n f} x'_n\| \leq \rho^n$$

since either $m_n = M_n - 1$ or the algorithm stops in step ⑤(d) (in which case z_{n,m_n} is a fixed point of the recursion in step ⑤(c) and $z_{n,m_n+\frac{1}{2}} = \text{prox}_{\iota_C + \gamma_n f} x'_n$). We therefore have $\sum_{n \in \mathbb{N}} \|a_n\| < +\infty$, and the conditions for the weak convergence of the forward-backward algorithm are fulfilled.

(ii) We have chosen $x_0 \in C$. In addition, $(\forall n \in \mathbb{N}) (z_{n,m+\frac{1}{2}})_m$ lies in C and x_{n+1} is convex combination of x_n and $z_{n,m+\frac{1}{2}}$. Hence, it is easily shown by induction that $(\forall n \geq 1) x_n \in C$. \square

Proposition 4.2(i) guarantees that, by choosing M_n large enough, the algorithm allows us to solve Problem 1.1. Although this result may appear somehow imprecise regarding the practical choice of M_n , it was observed in our simulations that small values of M_n are sufficient to ensure the convergence.

In addition, as a direct consequence of Proposition 4.2(ii), in step ③, the gradient of g is evaluated only on C . This means that, similarly to Algorithm 4.1, this algorithm is able to solve Problem 4.1. In the next section, we will show that a number of image restoration problems can be formulated as Problem 4.1.

5 Application to a class of image restoration problems

5.1 Context

We aim at restoring an image \overline{y} in a real separable Hilbert space \mathcal{G} from a degraded observation $z \in \mathcal{G}$. Here, digital images of size $N_1 \times N_2$ are considered, and thus $\mathcal{G} = \mathbb{R}^N$ with $N = N_1 N_2$. Let T be a linear operator from \mathcal{G} to \mathcal{G} modeling a linear degradation process, e.g., a convolutive blur. The image $\overline{u} = T\overline{y}$ (resp., $z = (z^{(i)})_{1 \leq i \leq N}$) is a realization of a real-valued random vector $\overline{U} = (\overline{U}^{(i)})_{1 \leq i \leq N}$ (resp., $Z = (Z^{(i)})_{1 \leq i \leq N}$). The image \overline{U} is contaminated by noise. Conditionally to $\overline{U} = (u^{(i)})_{1 \leq i \leq N} \in \mathcal{G}$, the random vector Z is assumed to have independent components, which are either discrete with conditional probability mass functions $(\mu_{Z_i | \overline{U}^{(i)} = u^{(i)}})_{1 \leq i \leq N}$ or absolutely continuous with conditional probability density functions which are also denoted by $(\mu_{Z_i | \overline{U}^{(i)} = u^{(i)}})_{1 \leq i \leq N}$. In this paper, we are interested in probability distributions such that

$$(\forall i \in \{1, \dots, N\})(\forall v \in \mathbb{R}) \quad \mu_{Z^{(i)} | \overline{U}^{(i)} = v}(z^{(i)}) \propto \exp(-\psi_i(v)), \quad (35)$$

where the functions $(\psi_i)_{1 \leq i \leq N}$ take their values in $]-\infty, +\infty]$ and satisfy the following assumption.

Assumption 5.1 *There exists a nonempty subset \mathbb{I} of $\{1, \dots, N\}$ and a constant $\delta \in \mathbb{R}$ such that, for all $i \in \{1, \dots, N\}$,*

- (i) $\text{dom } \psi_i =]\delta, +\infty[$ if $i \in \mathbb{I}$ and $\text{dom } \psi_i = [\delta, +\infty[$ if $i \notin \mathbb{I}$;
- (ii) if $i \in \mathbb{I}$, then ψ_i is twice continuously differentiable on $]\delta, +\infty[$ such that $\inf_{v \in]\delta, +\infty[} \psi_i(v) > -\infty$ and

$$\lim_{\substack{v \rightarrow \delta \\ v > \delta}} \psi_i(v) = +\infty;$$

its second-order derivative ψ_i'' is decreasing and satisfies

$$\lim_{v \rightarrow +\infty} \psi_i''(v) = 0;$$

(iii) if $i \notin \mathbb{I}$, then there exists $\alpha_i \in [0, +\infty[$ such that $(\forall v \in [\delta, +\infty[) \psi_i(v) = \alpha_i v$.

From Assumptions 5.1(ii) and (iii), it is clear that the functions $(\psi_i)_{1 \leq i \leq N}$ are convex (since $(\forall i \in \mathbb{I}) (\forall v \in]\delta, +\infty[) \psi_i''(v) \geq 0$) such that

$$\lim_{\substack{v \rightarrow \delta \\ v > \delta}} \psi_i''(v) = +\infty, \quad (36)$$

and they are lower semicontinuous (since $(\forall i \in \{1, \dots, N\}) \liminf_{v \rightarrow \delta} \psi_i(v) \geq \psi_i(\delta)$). Examples of such functions will be provided in sections 5.3 and 5.4.

In addition, a both simple and efficient prior probabilistic model on the unknown image \bar{y} is adopted by using a representation of this image in a frame [21, 29]. The frame coefficient space is the Euclidean space $\mathcal{H} = \mathbb{R}^K$ ($K \geq N$). We thus use a linear representation of the form

$$\bar{y} = F^* \bar{x},$$

where $F^* : \mathcal{H} \rightarrow \mathcal{G}$ is a frame synthesis operator, i.e., $\underline{\nu} \text{Id} \leq F^* \circ F \leq \bar{\nu} \text{Id}$ with $(\underline{\nu}, \bar{\nu}) \in]0, +\infty[^2$ (which implies that F^* is surjective).⁴ We then assume that the vector \bar{x} of frame coefficients is a realization of a random vector \bar{X} with independent components. Each component $\bar{X}^{(k)}$ with $k \in \{1, \dots, K\}$ of \bar{X} has a probability density $\exp(-\phi_k(\cdot)) / \int_{-\infty}^{+\infty} \exp(-\phi_k(\eta)) d\eta$, where ϕ_k is a finite function in $\Gamma_0(\mathbb{R})$.

Finally, we assume that we have prior information on \bar{x} which can be expressed by the fact that \bar{x} belongs to a closed convex set C of \mathcal{H} . The constraint set C will be assumed to satisfy

$$(TC^*) \cap \text{dom } \Psi \neq \emptyset, \quad (37)$$

where

$$C^* = F^* C = \{F^* x \mid x \in C\}$$

and

$$\left(\forall u = (u^{(i)})_{1 \leq i \leq N} \in \mathcal{G} \right) \quad \Psi(u) = \sum_{i=1}^N \psi_i(u^{(i)}).$$

With these assumptions, it can be shown (see [14]) that a MAP estimate of the vector of frame coefficients \bar{x} can be obtained from $z = (z^{(i)})_{1 \leq i \leq N}$ by minimizing in the Hilbert space \mathcal{H} the function $f + g + \iota_C$, where

$$\left(\forall x = (x^{(k)})_{1 \leq k \leq K} \in \mathcal{H} \right) \quad f(x) = \sum_{k=1}^K \phi_k(x^{(k)}) \quad (38)$$

and

$$g = \Psi \circ T \circ F^*. \quad (39)$$

We consequently have the following proposition.

Proposition 5.2 *Let $\mathcal{H} = \mathbb{R}^K$ and $\mathcal{G} = \mathbb{R}^N$ with $K \geq N$. Let f and g be defined by (38) and (39), respectively, where $T : \mathcal{G} \rightarrow \mathcal{G}$ is a linear operator. Under Assumption 5.1 and condition (37), then,*

- (i) f and g are in $\Gamma_0(\mathcal{H})$;
- (ii) if f is coercive⁵ or $\text{dom } g \cap C$ is bounded, then the minimization of $f + g + \iota_C$ admits a solution. In

⁴The existence of the lower bound implies the existence of the upper bound in the finite dimensional case.

⁵This means that $\lim_{\|x\| \rightarrow +\infty} f(x) = +\infty$.

addition, if f is strictly convex on $\text{dom } g \cap C$, the solution is unique.

Proof. (i) It is clear that f is a finite convex function of \mathcal{H} . As the functions $(\psi_i)_{1 \leq i \leq N}$ are in $\Gamma_0(\mathbb{R})$, Ψ belongs to $\Gamma_0(\mathcal{G})$. In addition, by using (37), we have $\text{ran}(T \circ F^*) \cap \text{dom } \Psi \neq \emptyset$. This allows us to deduce that $\text{dom } g \neq \emptyset$, and, therefore, $g \in \Gamma_0(\mathcal{H})$.

(ii) We have $\text{dom } f \cap \text{dom } g \cap C \neq \emptyset$ since $\text{dom } f = \mathcal{H}$ and (37) shows that $\text{dom } g \cap C = \text{dom}(\Psi \circ T \circ F^*) \cap C \neq \emptyset$. Since f and g are in $\Gamma_0(\mathcal{H})$, we deduce that $f + g + \iota_C$ is in $\Gamma_0(\mathcal{H})$.

Suppose now that f is coercive. By Assumption 5.1(ii), $(\forall i \in \mathbb{I}) \inf_{v \in]\delta, +\infty[} \psi_i(v) > -\infty$, whereas, due to Assumption 5.1(iii), $(\forall i \notin \mathbb{I}) \inf_{v \in]\delta, +\infty[} \psi_i(v) = \alpha_i \delta$. This implies that $\inf \Psi(\mathcal{G}) > -\infty$ and, consequently, $\inf g(\mathcal{H}) \geq \inf \Psi(\mathcal{G}) > -\infty$. As a result, $f + g + \iota_C \geq f + \iota_C + \inf g(\mathcal{H})$ is coercive. When $\text{dom } g \cap C$ is bounded, $f + g + \iota_C$ also is coercive. The existence of a solution to the minimization problem follows from classical results in convex analysis [26, Chap. 3, Prop. 1.2].

When f is strictly convex on $\text{dom } g \cap C$, the uniqueness of the solution follows from the fact that $f + g + \iota_C$ is strictly convex [26, Chap. 3, Prop. 1.2]. \square

Remark 5.3 *The function f is coercive (resp., strictly convex) if and only if the functions $(\phi_k)_{1 \leq k \leq N}$ are coercive [14, Prop. 3.3(iii)(c)] (resp., strictly convex).*

5.2 Quadratic extension

If we now investigate the Lipschitz-continuity of the gradient of g , it turns out that this property may be violated since Ψ is not finite. Due to (36), the gradient of g is not even guaranteed to be Lipschitz-continuous on $\text{int dom } g$.

To circumvent this problem, it can be noticed that, because of Assumption 5.1(ii) and (36), for all $i \in \mathbb{I}$, there exists a decreasing function $v_i :]0, +\infty[\rightarrow]\delta, +\infty[$ such that $\lim_{\theta \rightarrow +\infty} v_i(\theta) = \delta$ and

$$(\forall \theta \in]0, +\infty[)(\forall v \in]\delta, +\infty[) \quad 0 \leq \psi_i''(v) \leq \theta \Leftrightarrow v \geq v_i(\theta). \quad (40)$$

Let us now consider the function $g_\theta = \Psi_\theta \circ T \circ F^*$ with $\theta \in]0, +\infty[$, where

$$\left(\forall u = (u^{(i)})_{1 \leq i \leq N} \in \mathcal{G} \right) \quad \Psi_\theta(u) = \sum_{i=1}^N \psi_{\theta,i}(u^{(i)})$$

and the functions $(\psi_{\theta,i})_{1 \leq i \leq N}$ are chosen such that

$$(\forall v \in \mathbb{R}) \quad \psi_{\theta,i}(v) = \begin{cases} \frac{\theta}{2} v^2 + \zeta_{i,1}(\theta) v + \zeta_{i,0}(\theta) & \text{if } i \in \mathbb{I} \text{ and } \delta - \epsilon(\theta) \leq v < v_i(\theta), \\ \alpha_i v & \text{if } i \notin \mathbb{I} \text{ and } \delta - \epsilon(\theta) \leq v < \delta, \\ \psi_i(v) & \text{otherwise.} \end{cases} \quad (41)$$

Above, $\epsilon :]0, +\infty[\rightarrow]0, +\infty[$ is a decreasing function, and

$$\begin{aligned} (\forall i \in \mathbb{I}) \quad \zeta_{i,0}(\theta) &= \psi_i(v_i(\theta)) - v_i(\theta) \psi_i'(v_i(\theta)) + \frac{\theta}{2} (v_i(\theta))^2, \\ \zeta_{i,1}(\theta) &= \psi_i'(v_i(\theta)) - \theta v_i(\theta). \end{aligned}$$

For every $i \in \mathbb{I}$, the constants $\zeta_{i,0}(\theta)$ and $\zeta_{i,1}(\theta)$ have been determined so as to guarantee the continuity of $\psi_{\theta,i}$ and of its first order derivative at $v_i(\theta)$. Consequently, the following result can be obtained.

Proposition 5.4 *Suppose that Assumption 5.1 and condition (37) hold. Then, we have the following.*

- (i) $(\forall \theta \in]0, +\infty[) g_\theta \in \Gamma_0(\mathcal{H})$.
- (ii) $(\forall (\theta_1, \theta_2) \in]0, +\infty[^2) \theta_1 < \theta_2 \Rightarrow g_{\theta_1} \leq g_{\theta_2} \leq g$.
- (iii) *For every $\theta \in]0, +\infty[$, if $TC^* \subset]\delta - \epsilon(\theta), +\infty[^N$, then g_θ has a Lipschitz-continuous gradient over C with constant $\beta_\theta = \theta \|TF^*\|^2 \leq \theta \bar{\nu} \|T\|^2$.*
- (iv) *For every $\theta \in]0, +\infty[$, if f is coercive or if $\text{dom } g_\theta \cap C$ is bounded, then the minimization of $f + g_\theta + \iota_C$ admits a solution. In addition, if f is strictly convex on $\text{dom } g_\theta \cap C$, then $f + g_\theta + \iota_C$ has a unique minimizer \tilde{x}_θ .*
- (v) *Assume that*
 - (a) $\lim_{\theta \rightarrow +\infty} \epsilon(\theta) = 0$,
 - (b) $TC^* \subset]\delta, +\infty[^N$,
 - (c) f is coercive or C is bounded, and
 - (d) f is strictly convex on C .

Then, there exists $\bar{\theta} \in]0, +\infty[$ such that, for every $\theta \in [\bar{\theta}, +\infty[$, the minimizer \tilde{x}_θ of $f + g_\theta + \iota_C$ is the minimizer of $f + g + \iota_C$.

Proof. (i) Since Ψ_θ is defined and continuous on $[\delta - \epsilon(\theta), +\infty[^N$ and $(\forall i \in \{1, \dots, N\}) (\forall v \in]\delta - \epsilon(\theta), +\infty[) \psi''_{\theta,i}(v) \geq 0$, we have $\Psi_\theta \in \Gamma_0(\mathcal{G})$. In addition, $\text{dom } \Psi_\theta \cap \text{ran}(T \circ F^*) \supset \text{dom } \Psi \cap \text{ran}(T \circ F^*) \neq \emptyset$. Thus, $g_\theta \in \Gamma_0(\mathcal{H})$.

(ii) As a consequence of (41) and (40), we have, for every $i \in \mathbb{I}$,

$$(\forall v \in]\delta, v_i(\theta_2)[) \quad \psi''_i(v) > \psi''_{\theta_2,i}(v) = \theta_2.$$

So $\psi'_i - \psi'_{\theta_2,i}$ is a strictly increasing function over $] \delta, v_i(\theta_2) [$ and

$$(\forall v \in]\delta, v_i(\theta_2)[) \quad \psi'_i(v) - \psi'_{\theta_2,i}(v) < \psi'_i(v_i(\theta_2)) - \psi'_{\theta_2,i}(v_i(\theta_2)) = 0,$$

which, in turn, shows that $\psi_i - \psi_{\theta_2,i}$ is strictly decreasing on $] \delta, v_i(\theta_2) [$ and

$$(\forall v \in]\delta, v_i(\theta_2)[) \quad \psi_i(v) - \psi_{\theta_2,i}(v) > \psi_i(v_i(\theta_2)) - \psi_{\theta_2,i}(v_i(\theta_2)) = 0.$$

In addition, we know that, if $(i \in \mathbb{I} \text{ and } v \leq \delta)$ or $(i \notin \mathbb{I} \text{ and } v < \delta)$, then $\psi_i(v) = +\infty$ and, if $(i \in \mathbb{I} \text{ and } v \geq v_i(\theta_2))$ or $(i \notin \mathbb{I} \text{ and } v \geq \delta)$, then $\psi_i(v) = \psi_{\theta_2,i}(v)$. We deduce that, for all $i \in \{1, \dots, N\}$, $\psi_i \geq \psi_{\theta_2,i}$, and, therefore, g is lower bounded by g_{θ_2} .

By proceeding similarly, we have, for every $i \in \mathbb{I}$,

$$\begin{aligned} (\forall v \in [v_i(\theta_1), +\infty[) & \quad \psi_{\theta_2,i}(v) = \psi_i(v) = \psi_{\theta_1,i}(v), \\ (\forall v \in]\delta - \epsilon(\theta_2), v_i(\theta_1)[) & \quad \psi''_{\theta_2,i}(v) > \theta_1 = \psi''_{\theta_1,i}(v) \\ \Rightarrow (\forall v \in]\delta - \epsilon(\theta_2), v_i(\theta_1)[) & \quad \psi'_{\theta_2,i}(v) < \psi'_{\theta_1,i}(v) \\ \Rightarrow (\forall v \in [\delta - \epsilon(\theta_2), v_i(\theta_1)[) & \quad \psi_{\theta_2,i}(v) > \psi_{\theta_1,i}(v). \end{aligned}$$

In addition,

$$(\forall i \in \{1, \dots, N\})(\forall v \in]-\infty, \delta - \epsilon(\theta_2)[) \quad \psi_{\theta_2,i}(v) = +\infty \geq \psi_{\theta_1,i}(v)$$

and

$$(\forall i \notin \mathbb{I})(\forall v \in]\delta - \epsilon(\theta_2), +\infty[) \quad \psi_{\theta_2, i}(v) = \psi_{\theta_1, i}(v).$$

This shows that $\Psi_{\theta_2} \geq \Psi_{\theta_1}$ and, consequently, $g_{\theta_2} \geq g_{\theta_1}$.

(iii) As already mentioned, $\text{dom } \Psi_\theta =]\delta - \epsilon(\theta), +\infty[^N$. Consider

$$O_\theta = (TF^*)^{-1}(]\delta - \epsilon(\theta), +\infty[^N) = \{x \in \mathcal{H} \mid TF^*x \in]\delta - \epsilon(\theta), +\infty[^N\}.$$

O_θ is an open set and, as $TC^* \subset]\delta - \epsilon(\theta), +\infty[^N$, we have $C \subset O_\theta$. In addition, the function g_θ is differentiable on O_θ and its gradient is [26, Chap. 1, Prop. 5.7]

$$(\forall x \in O_\theta) \quad \nabla g_\theta(x) = FT^*(\nabla \Psi_\theta(TF^*x)), \quad (42)$$

where

$$(\forall u = (u^{(i)})_{1 \leq i \leq n} \in]\delta - \epsilon(\theta), +\infty[^N) \quad \nabla \Psi_\theta(u) = (\psi'_{\theta, i}(u^{(i)}))_{1 \leq i \leq n}.$$

We have then

$$\begin{aligned} (\forall u = (u^{(i)})_{1 \leq i \leq n} \in]\delta - \epsilon(\theta), +\infty[^N) (\forall v = (v^{(i)})_{1 \leq i \leq n} \in]\delta - \epsilon(\theta), +\infty[^N) \\ \|\nabla \Psi_\theta(u) - \nabla \Psi_\theta(v)\| = \left(\sum_{i=1}^n (\psi'_{\theta, i}(u^{(i)}) - \psi'_{\theta, i}(v^{(i)}))^2 \right)^{1/2} \end{aligned}$$

and, by the mean value theorem,

$$\begin{aligned} (\forall i \in \{1, \dots, n\}) \quad |\psi'_{\theta, i}(u^{(i)}) - \psi'_{\theta, i}(v^{(i)})| &\leq |u^{(i)} - v^{(i)}| \sup_{\xi \in]\delta - \epsilon(\theta), +\infty[} |\psi''_{\theta, i}(\xi)| \\ &\leq \theta |u^{(i)} - v^{(i)}|. \end{aligned}$$

This yields

$$(\forall u \in]\delta - \epsilon(\theta), +\infty[^N) (\forall v \in]\delta - \epsilon(\theta), +\infty[^N) \quad \|\nabla \Psi_\theta(u) - \nabla \Psi_\theta(v)\| \leq \theta \|u - v\|,$$

and we deduce from (42) that

$$(\forall (x, x') \in O_\theta^2) \quad \|\nabla g_\theta(x) - \nabla g_\theta(x')\| \leq \theta \|TF^*\|^2 \|x - x'\|$$

and $\|TF^*\|^2 \leq \|F\|^2 \|T\|^2 \leq \bar{\nu} \|T\|^2$.

(iv) The proof is similar to that of Proposition 5.2(ii).

(v) In the following, we use the notation $h = f + g + \iota_C$ and $(\forall \theta \in]0, +\infty[) h_\theta = f + g_\theta + \iota_C$.

Let $(\theta_\ell)_{\ell \in \mathbb{N}}$ be an increasing sequence of $]0, +\infty[$ such that $\lim_{\ell \rightarrow +\infty} \theta_\ell = +\infty$. As a consequence of (i) and (ii), $(h_{\theta_\ell})_{\ell \in \mathbb{N}}$ is an increasing sequence of functions in $\Gamma_0(\mathcal{H})$. We deduce from [41, Proposition 7.4(d)] that $(h_{\theta_\ell})_{\ell \in \mathbb{N}}$ epi-converges to its pointwise limit. By using (41) in combination with the facts that $(\forall i \in \mathbb{I}) \lim_{\theta \rightarrow +\infty} v_i(\theta) = \delta$ and $\lim_{\theta \rightarrow +\infty} \epsilon(\theta) = 0$, we see that the pointwise limit is equal to h .

Under assumptions (v)(b) and (v)(c), $(\forall \ell \in \mathbb{N}) h_{\theta_\ell}$ is coercive since $C \cap \text{dom } g_{\theta_\ell} = C$. Equivalently, its level sets $\text{lev}_{\leq \eta} h_{\theta_\ell} = \{x \in \mathcal{H} \mid h_{\theta_\ell}(x) \leq \eta\}$ with $\eta \in \mathbb{R}$ are bounded. $(h_{\theta_\ell})_{\ell \in \mathbb{N}}$ being a sequence of increasing functions, $\cup_{\ell \in \mathbb{N}} \text{lev}_{\leq \eta} h_{\theta_\ell} = \text{lev}_{\leq \eta} h_{\theta_0}$ is bounded. As the functions h_{θ_ℓ} with $\ell \in \mathbb{N}$ and h are lower semicontinuous and proper, [41, Theorem 7.33] allows us to claim that the sequence $(\tilde{x}_{\theta_\ell})_{\ell \in \mathbb{N}}$ converges to the minimizer \tilde{x} of h (by assumptions (v)(b) and (v)(d), both h_{θ_ℓ} with $\ell \in \mathbb{N}$ and h have a unique minimizer due to the strict convexity of f on $(C \cap \text{dom } g) \subset (C \cap \text{dom } g_{\theta_\ell}) = C$ and Propositions 5.2(ii) and 5.4(iv)). As $\tilde{x} \in \text{dom } h$, $(\forall i \in \mathbb{I}) (TF^*\tilde{x})^{(i)} \in \text{dom } \psi_i =]\delta, +\infty[$, where, for every $x \in \mathcal{H}$ and

$i \in \{1, \dots, N\}$, $(TF^*x)^{(i)}$ denotes the i th component of vector TF^*x . Since $\lim_{\ell \rightarrow +\infty} \tilde{x}_{\theta_\ell} = \tilde{x}$, we have, for every $i \in \mathbb{I}$,

$$\begin{aligned} (\forall \eta \in]0, +\infty[) (\exists \ell_{\eta,i} \in \mathbb{N}) \text{ such that} \\ (\forall \ell \in \mathbb{N}) \quad \ell \geq \ell_{\eta,i} \Rightarrow |(TF^*\tilde{x}_{\theta_\ell})^{(i)} - (TF^*\tilde{x})^{(i)}| < \eta \\ \Rightarrow (TF^*\tilde{x}_{\theta_\ell})^{(i)} > \min_{i \in \mathbb{I}} (TF^*\tilde{x})^{(i)} - \eta. \end{aligned}$$

By setting $\eta = \frac{\min_{i \in \mathbb{I}} (TF^*\tilde{x})^{(i)} - \delta}{2} > 0$ and $\ell_\eta = \max_{i \in \mathbb{I}} \ell_{\eta,i}$, we deduce that

$$(\forall \ell \in \mathbb{N}) \quad \ell \geq \ell_\eta \Rightarrow (TF^*\tilde{x}_{\theta_\ell})^{(i)} \geq \underline{\nu}, \quad (43)$$

where $\underline{\nu} = \frac{\delta + \min_{i \in \mathbb{I}} (TF^*\tilde{x})^{(i)}}{2} > \delta$. In addition, since $\lim_{\ell \rightarrow +\infty} \theta_\ell = +\infty \Rightarrow \lim_{\ell \rightarrow +\infty} \max_{i \in \mathbb{I}} v_i(\theta_\ell) = \delta$, there exists $\bar{\ell} \geq \ell_\eta$ such that $(\forall i \in \mathbb{I}) v_i(\theta_{\bar{\ell}}) \leq \underline{\nu}$. By using (41), this implies that $(\forall i \in \mathbb{I}) (\forall v \in [\underline{\nu}, +\infty[) \psi_{\theta_{\bar{\ell}},i}(v) = \psi_i(v)$. By defining now

$$D = \{x \in \text{dom } g \mid (\forall i \in \mathbb{I}) (TF^*x)^{(i)} \in [\underline{\nu}, +\infty[\},$$

we deduce that $(\forall x \in D) h_{\theta_{\bar{\ell}}}(x) = h(x)$. Moreover, according to assumption (v)(b), for every $\ell \in \mathbb{N}$, if $i \notin \mathbb{I}$, then

$$(TF^*\tilde{x}_{\theta_\ell})^{(i)} \in [\delta, +\infty[. \quad (44)$$

Altogether, (43) and (44) show that both $\tilde{x}_{\theta_{\bar{\ell}}}$ and \tilde{x} belong to D . Consequently, as $\tilde{x}_{\theta_{\bar{\ell}}} = \arg \min_{x \in \mathcal{H}} h_{\theta_{\bar{\ell}}}(x)$, we have $h(\tilde{x}_{\theta_{\bar{\ell}}}) = h_{\theta_{\bar{\ell}}}(\tilde{x}_{\theta_{\bar{\ell}}}) \leq h_{\theta_{\bar{\ell}}}(\tilde{x}) = h(\tilde{x})$, which proves that $\tilde{x}_{\theta_{\bar{\ell}}} = \tilde{x}$.

Considering now $\theta \in [\theta_{\bar{\ell}}, +\infty[$, from (ii) we get $h_{\theta_{\bar{\ell}}} \leq h_\theta \leq h$. Thus, $h(\tilde{x}) = h_{\theta_{\bar{\ell}}}(\tilde{x}) \leq h_\theta(\tilde{x}) \leq h(\tilde{x})$, which results in $h_\theta(\tilde{x}) = h(\tilde{x})$, while

$$(\forall x \in \mathcal{H}) \quad h_\theta(x) \geq h_{\theta_{\bar{\ell}}}(x) \geq h_{\theta_{\bar{\ell}}}(\tilde{x}) = h(\tilde{x}).$$

This allows us to conclude that $\tilde{x}_\theta = \tilde{x}$ as soon as $\theta \geq \theta_{\bar{\ell}} = \bar{\theta}$. \square

Remark 5.5 (i) *A polynomial approximation of the objective function was considered in [27] which is different from the proposed quadratic extension technique.*

(ii) *As expressed by Proposition 5.4(ii), g_θ (resp., $f + g_\theta + \iota_C$) with $\theta > 0$ constitutes a lower approximation of g (resp., $f + g + \iota_C$), which becomes closer as θ increases.*

(iii) *As shown by Proposition 5.4(iii), the main role of parameter θ is to control the Lipschitz constant of the gradient of this approximation of g .*

(iv) *At the same time, Proposition 5.4(v) indicates that this parameter allows us to control the closeness of the approximation to a minimizer of the original MAP criterion. This approximation becomes perfect when θ becomes greater than some value $\bar{\theta}$.*

Under the assumptions of Proposition 5.4(iii), the minimization of $f + g_\theta + \iota_C$ with $\theta \in]0, +\infty[$ is a problem of the type of Problem 4.1. Therefore, Propositions 4.1 and 4.2 show that, provided that f is coercive or C is bounded, Algorithms 4.1 and 4.2 can be applied in this context. In addition, Proposition 5.4(v) suggests that, by choosing θ large enough, a solution to the original MAP criterion can be found. However, according to Proposition 5.4(iii), a large value of θ induces a large value of the Lipschitz constant β_θ . This means that a small value of the step-size parameter must also be used in the forward iteration of the algorithms, which is detrimental to the convergence speed. In practice, the choice of θ results from a trade-off, as will be illustrated by the numerical results.

5.3 First example

5.3.1 Model

We want to restore an image $\bar{y} \in [0, +\infty[^N$ corrupted by a linear operator $T : \mathcal{G} \rightarrow \mathcal{G}$ and an additive noise $w \in \mathcal{G}$, having the observation

$$z = T\bar{y} + w = \bar{u} + w.$$

In addition, the linear operator T is assumed to be nonnegative-valued (in the sense that the matrix associated to T has nonnegative elements), and $w = (w^{(i)})_{1 \leq i \leq N}$ is a realization of an independent zero-mean Gaussian noise $W = (W^{(i)})_{1 \leq i \leq N}$. The variance of each random variable $W^{(i)}$ with $i \in \{1, \dots, N\}$ is signal-dependent and is equal to $\sigma_i^2(\bar{u}^{(i)})$, where

$$(\forall v \in [0, +\infty[) \quad \sigma_i^2(v) = \frac{v}{2\alpha_i}$$

with $\alpha_i \in]0, +\infty[$. So, the functions $(\psi_i)_{1 \leq i \leq N}$ as defined in (35) are, when $z^{(i)} \neq 0$,

$$(\forall v \in \mathbb{R}) \quad \psi_i(v) = \begin{cases} \frac{\alpha_i(v - z^{(i)})^2}{v} & \text{if } v \in]0, +\infty[, \\ +\infty & \text{otherwise} \end{cases}$$

and, when $z^{(i)} = 0$,

$$(\forall v \in \mathbb{R}) \quad \psi_i(v) = \begin{cases} \alpha_i v & \text{if } v \in [0, +\infty[, \\ +\infty & \text{otherwise.} \end{cases}$$

So, provided that $z \neq 0$, Assumption 5.1 is satisfied with $\delta = 0$ and $\mathbb{I} = \{i \in \{1, \dots, N\} \mid z^{(i)} \neq 0\}$ since, for all $i \in \mathbb{I}$,

$$\begin{aligned} (\forall v \in]0, +\infty[) \quad \psi_i'(v) &= \alpha_i \frac{v^2 - (z^{(i)})^2}{v^2}, \\ \psi_i''(v) &= \frac{2\alpha_i(z^{(i)})^2}{v^3}. \end{aligned}$$

We deduce from (40) that, for every $i \in \mathbb{I}$,

$$(\forall \theta \in]0, +\infty[) \quad v_i(\theta) = \left(\frac{2\alpha_i(z^{(i)})^2}{\theta} \right)^{1/3}.$$

5.3.2 Simulation results

Here, T is either a 3×3 or a 7×7 uniform convolutive blur with $\|T\| = 1$. The 512×512 satellite image \bar{y} ($N = 512^2$) shown in Figure 1(a) has been degraded by T and a signal-dependent additive noise following the model described in the previous section with $\alpha_i \equiv 1$ or $\alpha_i \equiv 5$. The degraded image z displayed in Figure 1(b) corresponds to a 7×7 uniform blur and $\alpha_i \equiv 1$.

A twice redundant dual-tree tight frame representation [15] ($\underline{\nu} = \bar{\nu} = 2$, $K = 2N$) using symlet filters of length 6 [21] has been employed in this example. The potential functions ϕ_k are taken to be of the form $\chi_k |\cdot| + \omega_k |\cdot|^{p_k}$, where $(\chi_k, \omega_k) \in]0, +\infty[^2$ and $p_k \in \{4/3, 3/2, 2\}$ are subband adaptive. These parameters have been determined by a maximum likelihood approach. The function f as defined by (38) is therefore coercive and strictly convex (see Remark 5.3).

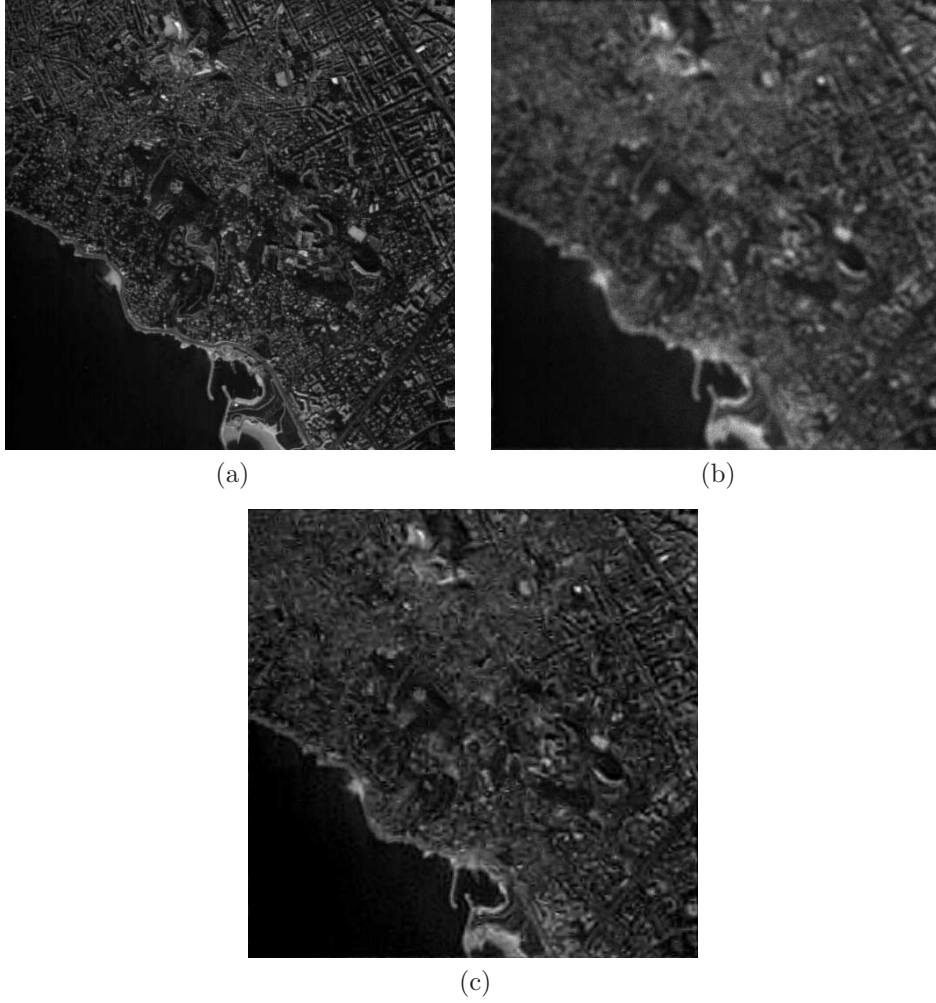


Figure 1: Results for a satellite image of the city of Marseille. (a) Original image; (b) degraded image; (c) restored using a dual-tree transform (DTT).

A constraint on the solution is introduced to take into account the range of admissible values in the image by choosing

$$C^* = [0, 255]^N. \quad (45)$$

Due to the form of the operator T , $TC^* = C^*$ and condition (37) is therefore satisfied. Proposition 5.2 thus guarantees that a unique solution \tilde{x} to the MAP estimation problem exists. According to Proposition 5.4(iv), for every $\theta \in]0, +\infty[$, a unique minimizer \tilde{x}_θ of $f + g_\theta + \iota_C$ also exists which allows us to approximate \tilde{x} as stated by Proposition 5.4(v).

Since, for every $\theta \in]0, +\infty[$, $TC^* = C^* \subset [-\epsilon(\theta), +\infty[^N$, Proposition 5.4(iii) shows that g_θ has a Lipschitz-continuous gradient over C and Algorithms 4.1 and 4.2 can be used to compute \tilde{x}_θ . The two algorithms are subsequently tested.

On the one hand, when Algorithm 4.1 is used, the initialization is performed by setting $z_0 = P_C z$, and we choose $\kappa \equiv 60$ and $\tau_m \equiv 1$. The projection onto $C = (F^*)^{-1}C^*$ is $P_C = \text{prox}_{\iota_{C^*} \circ F^*}$, which can be computed by using Proposition 2.6 with $L = F^*$. The other parameters have been fixed to $\lambda_{m,n} \equiv 1$ and

$\gamma_{m,n} \equiv 0.995/(\kappa\theta)$, in compliance with Proposition 5.4(iii). The convergence of the algorithm is secured by Proposition 4.1 since Assumption 3.7(i) trivially holds. However, to improve the convergence profile, the following empirical rule for choosing the number N_m of forward-backward iterations has been substituted for the necessary conditions (4.1a) and (4.1b):

$$N_m = \inf\{n \in \mathbb{N}^* \mid \|x_{m,n} - x_{m,n-1}\| \leq \eta\} \quad (46)$$

with $\eta = 10^{-4}$.

On the other hand, when Algorithm 4.2 is used, the parameters have been chosen as follows: $\lambda_n \equiv 1$, $\tau_{n,m} \equiv 1$, and $\gamma_n \equiv 0.995/\theta$. The algorithm has been initialized by setting $x_0 = P_C z$, where the projection onto C is computed as described previously. The convergence of the algorithm is ensured by Proposition 4.2. The number M_n of Douglas–Rachford iterations has been fixed as

$$M_n = \inf\{m \in \mathbb{N}^* \mid \|z_{n,m} - z_{n,m-1}\| \leq \eta\} \quad (47)$$

with the same value of η as for the first algorithm.

The error between an image y and the original image \bar{y} is evaluated by the signal to noise ratio (SNR) defined as $20 \log_{10}(\|\bar{y}\|/\|y - \bar{y}\|)$.

Three objectives are targeted in our experiments. First, we want to study the performance of the proposed approach using the redundant dual-tree transform (DTT). The results presented in Table 1 have been generated by Algorithm 4.1, but Algorithm 4.2 produces the same results.

Table 1: SNR for the satellite image.

		3 × 3 blur				7 × 7 blur				
		θ	0.025	0.05	5	7	0.025	0.05	5	7
$\alpha_i = 1$	SNR	13.9	16.3	16.8	16.8	10.9	11.9	12.1	12.1	
	θ	0.15	0.25	10	12	0.15	0.25	10	12	
$\alpha_i = 5$	SNR	15.9	18.0	18.8	18.8	12.6	13.3	13.7	13.7	
	θ	0.15	0.25	10	12	0.15	0.25	10	12	

As suggested by Proposition 5.4(v), as θ increases, the image is better restored. The effectiveness of the proposed approach is also demonstrated visually in Figure 1(c), showing the restored image when T is a 7×7 uniform blur, $\alpha_i \equiv 1$, and $\theta = 0.05$. It can be observed that the algorithm allows us to recover most of the details which were not perceptible due to blur and noise.

Second, we aim at comparing the two proposed algorithms in terms of convergence for a given value of θ . In Figure 2, the MAP criterion value is plotted as a function of the computational time for a 7×7 blur, $\alpha_i \equiv 5$, and $\theta = 0.25$. For improved readability, the criterion has been normalized by subtracting the final value and dividing by the initial one. It can be noticed that Algorithm 4.2 converges faster than Algorithm 4.1. This fact was confirmed by other simulation results performed in various contexts.

Finally, Figure 3 illustrates the influence of the choice of the parameter θ when Algorithm 4.2 is used for a 7×7 blur and $\alpha_i \equiv 5$. As expected, the larger θ is, the slower the convergence of the algorithms is. A trade-off has therefore to be made: θ must be chosen large enough to reach a good restoration quality, but it should not be too large in order to get a fast convergence.

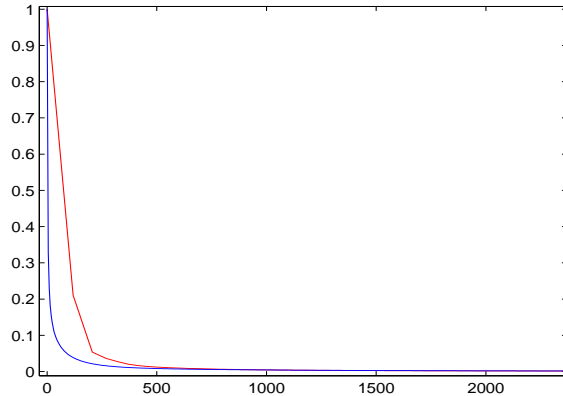


Figure 2: Normalized MAP criterion (Algorithm 4.1 in red and Algorithm 4.2 in blue) versus computational time (in seconds) (Intel Xeon 4 Core, 3.00 GHz).

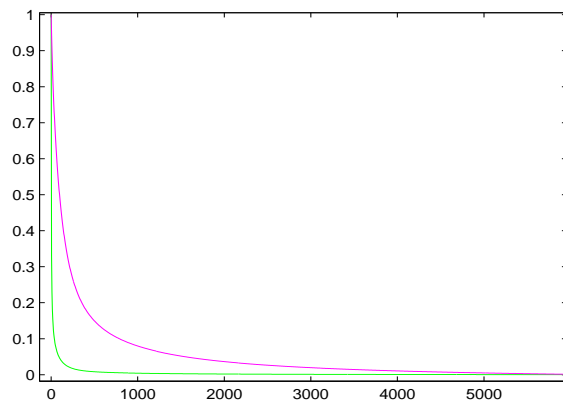


Figure 3: Normalized MAP criterion (for $\theta = 0.25$ in green and $\theta = 10$ in magenta) versus computational time (in seconds) (Intel Xeon 4 Core, 3.00 GHz).

5.4 Second example

5.4.1 Model

In this second scenario, we want to restore an image $\bar{y} \in [0, +\infty[^N$ which is corrupted by a linear operator $T : \mathcal{G} \rightarrow \mathcal{G}$, assumed to be nonnegative-valued, and which is embedded in (possibly inhomogeneous) Poisson noise. Thus, the observed image $z = (z^{(i)})_{1 \leq i \leq N} \in \mathbb{N}^N$ is Poisson distributed, its conditional probability mass function being given by

$$(\forall i \in \{1, \dots, N\})(\forall v \in [0, +\infty[) \quad \mu_{Z^{(i)} | \bar{U}^{(i)}=v}(z^{(i)}) = \frac{(\alpha_i v)^{z^{(i)}}}{z^{(i)}!} \exp(-\alpha_i v), \quad (48)$$

where $(\alpha_i)_{1 \leq i \leq N} \in]0, +\infty[^N$ are scaling parameters.

Consequently, using (35) and (48), for every $i \in \{1, \dots, N\}$, we have, when $z^{(i)} > 0$,

$$(\forall v \in \mathbb{R}) \quad \psi_i(v) = \begin{cases} \alpha_i v - z^{(i)} + z^{(i)} \ln\left(\frac{z^{(i)}}{\alpha_i v}\right) & \text{if } v \in]0, +\infty[, \\ +\infty & \text{otherwise,} \end{cases} \quad (49)$$

and, when $z^{(i)} = 0$,

$$(\forall v \in \mathbb{R}) \quad \psi_i(v) = \begin{cases} \alpha_i v & \text{if } v \in [0, +\infty[, \\ +\infty & \text{otherwise.} \end{cases}$$

As the functions $(\psi_i)_{1 \leq i \leq N}$ are defined up to additive constants, these constants have been chosen in (49) so as to obtain the expression of the classical Kullback–Leibler divergence term [10].

In this context, provided that $z \neq 0$, Assumption 5.1 holds with $\delta = 0$ and $\mathbb{I} = \{i \in \{1, \dots, N\} \mid z^{(i)} > 0\}$ since, for all $i \in \mathbb{I}$,

$$(\forall v \in]0, +\infty[) \quad \begin{aligned} \psi_i'(v) &= \alpha_i - \frac{z^{(i)}}{v}, \\ \psi_i''(v) &= \frac{z^{(i)}}{v^2}. \end{aligned}$$

We deduce from (40) that, for every $i \in \mathbb{I}$,

$$(\forall \theta \in]0, +\infty[) \quad v_i(\theta) = \sqrt{\frac{z^{(i)}}{\theta}}.$$

Remark 5.6 *At this point, it may be interesting to compare the proposed extension with the approach developed in [24]. The use of the Anscombe transform [2] in [24] is actually tantamount to approximating the anti-log-likelihood ψ_i of the Poisson distribution by*

$$(\forall v \in \mathbb{R}) \quad \tilde{\psi}_i(v) = \begin{cases} \frac{1}{2} \left(2\sqrt{\alpha_i v + \frac{3}{8}} - z^{(i)} \right)^2 & \text{if } v \in [0, +\infty[, \\ +\infty & \text{otherwise.} \end{cases} \quad (50)$$

The proposed quadratic extension is illustrated in Figure 4, where a graphical comparison with the Anscombe approximation is performed.

5.4.2 Simulation results

Here, T is a 5×5 uniform blur with $\|T\| = 1$. A 256×256 ($N = 256^2$) medical image \bar{y} shown in Figure 5(a) is degraded by T and corrupted by a Poisson noise following the model described in the previous section for various intensity levels. The degraded image z is displayed in Figure 5(b) when $\alpha_i \equiv 0.01$.

An orthonormal wavelet basis representation has been adopted using symlets of length 6 ($\underline{\nu} = \bar{\nu} = 1$, $K = N$). The potential functions ϕ_k are taken to be of the same form as in the first example, and the function f is therefore coercive and strictly convex.

The constraint imposed on the solution is given by $C = (F^*)^{-1}C^*$, where C^* is defined by (45). Since $TC^* = C^*$, Proposition 5.4(iv) guarantees that a unique minimizer \tilde{x}_θ of $f + g_\theta + \iota_C$ exists which has been computed with Algorithm 4.1. The algorithm has been initialized by setting $z_0 = P_C z$, and we have chosen $\gamma_{m,n} \equiv 1.99/(\kappa\theta)$, $\kappa = 60$, and $\lambda_{m,n} \equiv \tau_m \equiv 1$. The number of forward-backward iterations is given

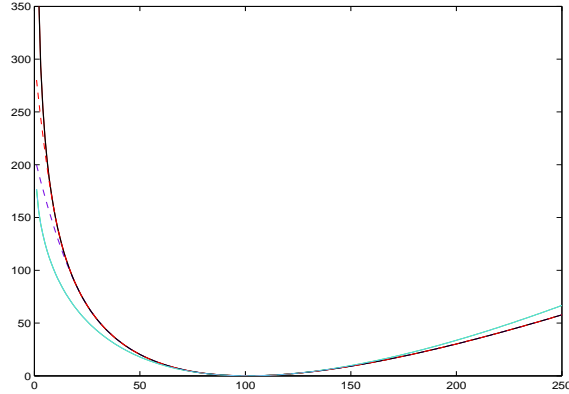


Figure 4: Graph of the function ψ_i (black continuous line) when $\delta = 0$, $\alpha_i = 1$, $z^{(i)} = 100$. Its quadratic extension $\psi_{\theta,i}$ with $\theta = 0.2$ (purple dashed line) and $\theta = 1$ (red dashed line) for $\epsilon(\theta) = 10^{-16}$ and its Anscombe approximation $\tilde{\psi}_i$ (cyan continuous line).

by (46) with $\eta = 10^{-4}$. Note that the convergence rate could be accelerated by using adaptive step-size methods such as the Armijo–Goldstein search [44, 24]. However, the computational time of the step-size determination should be taken into account.

To evaluate the performance of our algorithm we use the SNR defined in section 5.3.2. Table 2 shows the values of the SNR obtained for different values of α_i and θ . As predicted by Proposition 5.4(v), beyond some value of θ , which is dependent of α_i , the optimal value is found. We also compare our results with those provided by two different approaches. The first one is the regularized expectation maximization (EM) approach (also sometimes called SMART) [10, 31], where the Poisson antilikelihood penalized by a term proportional to the Kullback–Leibler divergence between the desired solution and a reference image is minimized. Its weighting factor has been adjusted manually so as to maximize the SNR, and the reference image is a constant image whose pixel value has been set to the mean value of the degraded image. The other approach is the method based on the Anscombe transform proposed in [24] and discussed in Remark 5.6. For fair comparisons, the method here employs the same orthonormal wavelet representation, the same functions $(\phi_k)_{1 \leq k \leq K}$ as ours, and the same constraint set C . It can be observed that the approach we propose gives good results. However, for high intensity levels ($\alpha_i \geq 0.1$), the method based on the Anscombe transform performs equally well in terms of SNR. The restored images are shown in Figure 5, when $\alpha_i \equiv 0.01$ and $\theta \equiv 0.001$ after 3000 iterations. In spite of an important degradation of the original image, it can be seen that our approach is able to recover the main features in the image. It can also be noticed that the image restored by the two methods exhibits different visual characteristics.

Table 2: SNR for the medical image.

α_i	Regularized EM	Anscombe	Quadratic extension				
			$\theta = 0.001$	$\theta = 0.005$	$\theta = 0.1$	$\theta = 1$	$\theta = 5$
0.01	6.47	8.24	9.75	9.75	9.75	9.75	9.75
0.05	9.01	11.5	11.7	11.9	11.9	11.9	11.9
0.1	10.1	12.4	12.0	12.5	12.5	12.5	12.5
1	13.8	15.1	0	10.1	13.7	15.1	15.1

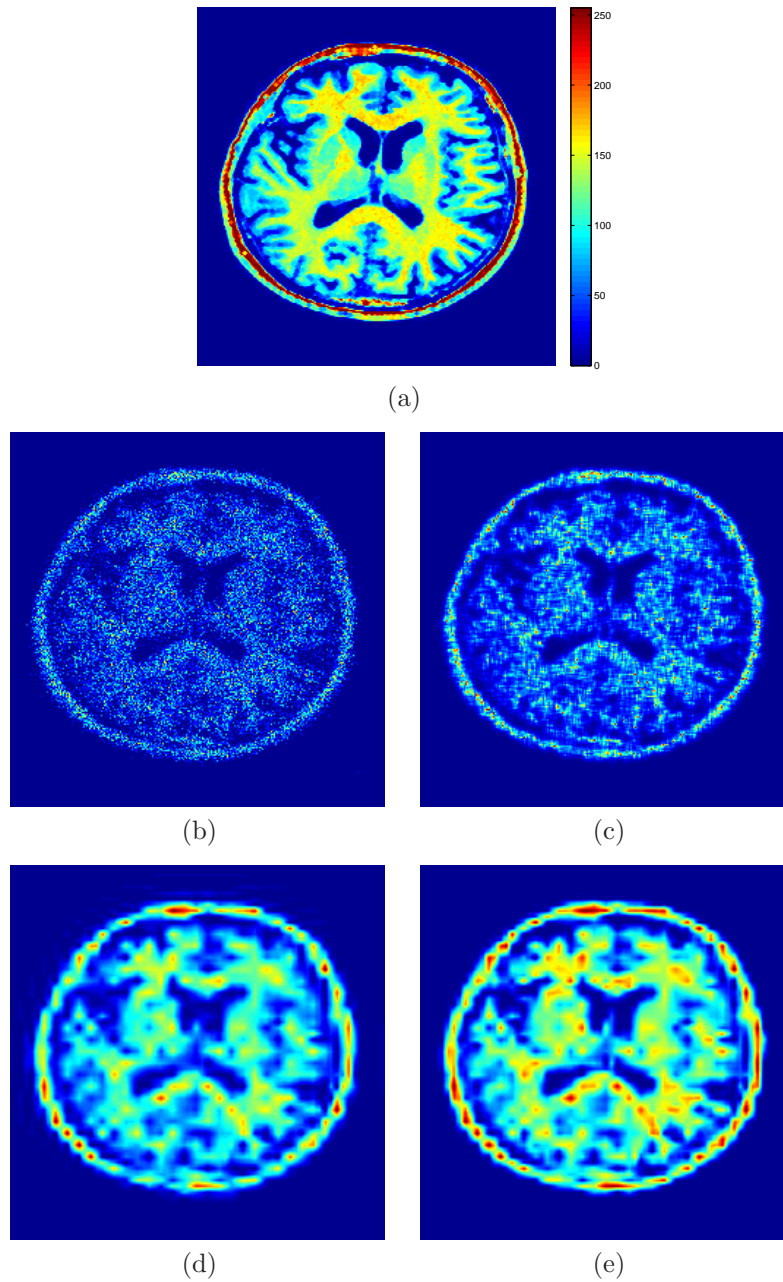


Figure 5: Results on the medical image. (a) Original, (b) degraded, (c) restored with EM, (d) restored with Anscombe transform, and (e) restored with quadratic extension.

6 Conclusion

Two main problems have been addressed in this paper.

The first one concerns the minimization on a convex set C of a sum of two functions, one of which, g , is smooth, while the other may be nonsmooth. Such a constrained minimization has been performed by

combining forward-backward and Douglas–Rachford iterations. Various combinations of these algorithms can be envisaged, and our study tends to show that Algorithm 4.2 is a good choice. It can be noticed that adding a constraint on the solution for a restoration problem was shown to be useful in another work [40], where it appeared that the visual quality of the restored image can be much improved with respect to the unconstrained case, when both restoration approaches are applicable.

The second point concerns the quadratic lower approximation technique we have proposed. This method offers a means of applying the proposed algorithms in cases when g is differentiable on C but the gradient of g is not necessarily Lipschitz-continuous on C . By quadratically extending g , the proposed constrained minimization algorithms can be used. This extension depends on a parameter θ which controls the precision (closeness to the solution of the original minimization problem) and the convergence speed of the algorithm. As illustrated by the simulations, the choice of this parameter should result from a trade-off. The numerical results have also shown the efficiency of the proposed methods in deconvolution problems involving a signal-dependent Gaussian noise or a Poisson noise.

Finally, it may be interesting to note that nested iterative algorithms similar to those developed in this paper can be used to solve $\min_{x \in \mathcal{H}} f + g + h$, where \mathcal{H} is a real separable Hilbert space, f , g , and h are functions in $\Gamma_0(\mathcal{H})$, and g is β -Lipschitz-differentiable.

A Study of Example 2.3

Let $p = \text{prox}_f x$ and $q = \text{prox}_{f+\iota_C} x$, where $x \in \mathcal{H}$. Let g be the convex function defined by $(\forall y \in \mathcal{H}) g(y) = \frac{1}{2} \|y - x\|^2 + \frac{1}{2} y^\top \Lambda y$. Consequently, $p = (I + \Lambda)^{-1} x$ is the minimizer of g on \mathcal{H} , whereas q is the minimizer of g on C . Thus, we can write $(\forall y \in \mathcal{H}) g(y) = \tilde{g}(y) + h_x$, where $\tilde{g}(y) = \frac{1}{2} (y - p)^\top (I + \Lambda)(y - p)$ and h_x is a function of x . Then, q also minimizes \tilde{g} on C .

In the example, we have chosen $x = 2(\Lambda_{1,2}, 1 + \Lambda_{2,2})^\top$, which yields $p = (0, 2)^\top$ and $P_C(p) = (0, 1)^\top$.

Let $\tilde{q} = (\pi, 1)^\top$. To show that $q = \tilde{q}$, we have to check that \tilde{q} minimizes \tilde{g} on C . A necessary and sufficient condition for the latter property to be satisfied [30, p. 293, Theorem 1.1.1] is that

$$(\forall y \in C) \quad (\nabla \tilde{g}(\tilde{q}))^\top (y - \tilde{q}) \geq 0,$$

where $\nabla \tilde{g}(\tilde{q}) = (I + \Lambda)(\tilde{q} - p)$ is the gradient of \tilde{g} at \tilde{q} . This is equivalent to proving that

$$(\forall (y^{(1)}, y^{(2)})^\top \in C) \quad (2\pi - \Lambda_{1,2})(y^{(1)} - \pi) + (\Lambda_{1,2}\pi - \Lambda_{2,2} - 1)(y^{(2)} - 1) \geq 0. \quad (51)$$

Three cases must be considered:

- When $\Lambda_{1,2} < -2$, $(y^{(1)}, y^{(2)})^\top \in C \Rightarrow y^{(1)} \geq -1 = \pi$ and $y^{(2)} \leq 1$. In addition, we have $2\pi - \Lambda_{1,2} = -2 - \Lambda_{1,2} > 0$ and $\Lambda_{2,2} - \Lambda_{1,2}^2 \geq 0 \Rightarrow \Lambda_{1,2}\pi - \Lambda_{2,2} - 1 \leq -\Lambda_{1,2}^2 - \Lambda_{1,2} - 1 < 0$. So, (51) holds.
- When $\Lambda_{1,2} > 2$, similar arguments hold.
- When $\Lambda_{1,2} \in [-2, 2]$, $2\pi - \Lambda_{1,2} = 0$ and $\Lambda_{1,2}\pi - \Lambda_{2,2} - 1 = \frac{\Lambda_{1,2}^2}{2} - \Lambda_{2,2} - 1 \leq -\frac{\Lambda_{1,2}^2}{2} - 1 \leq 0$, which shows that (51) is satisfied.

This leads to the conclusion of Example 2.3.

B Study of Example 2.4

Let f be the function defined in Example 2.4. Defining the rotation matrix $R = \frac{1}{\sqrt{2}} \begin{pmatrix} 1 & -1 \\ 1 & 1 \end{pmatrix}$, this function can be expressed as

$$(\forall x \in \mathbb{R}^2) \quad f(x) = \tilde{f}(Rx),$$

where $\tilde{f}(x) = \frac{1}{2}x^\top \Lambda x$ with

$$\Lambda = \begin{pmatrix} 1 & \Lambda_{1,2} \\ \Lambda_{1,2} & 1 \end{pmatrix}.$$

In addition,

$$C = \{x \in \mathbb{R}^2 \mid Rx \in [-1, 1]^2\} = R^\top [-1, 1]^2.$$

It can be noticed that $[-1, 1]^2$ is the separable convex set considered in Example 2.3, whereas \tilde{f} appears as a particular case in the class of quadratic functions considered in this example (by setting $\Lambda_{2,2} = 1$).

Thus, the proximity operator of f is

$$\begin{aligned} (\forall x \in \mathcal{H}) \quad \text{prox}_f x &= \arg \min_{y \in \mathcal{H}} \frac{1}{2} \|x - y\|^2 + f(y) \\ &= \arg \min_{y \in \mathcal{H}} \frac{1}{2} \|Rx - Ry\|^2 + \tilde{f}(Ry) = R^\top \text{prox}_{\tilde{f}}(Rx) \end{aligned}$$

and $P_C(\text{prox}_f x) = R^\top P_{[-1, 1]^2}(R \text{prox}_f x) = R^\top P_{[-1, 1]^2}(\text{prox}_{\tilde{f}}(Rx))$. Similarly, we have

$$(\forall x \in \mathcal{H}) \quad \text{prox}_{f+\iota_C} x = R^\top \text{prox}_{\tilde{f}+\iota_{[-1, 1]^2}}(Rx).$$

So, if $x = 2R^\top(\Lambda_{1,2}, 2)^\top = \sqrt{2}(2 + \Lambda_{1,2}, 2 - \Lambda_{1,2})^\top$, we deduce from Example 2.3 that $P_C(\text{prox}_f x) = \frac{1}{\sqrt{2}}(1, -1)^\top$ and $\text{prox}_{f+\iota_C} x = \frac{1}{\sqrt{2}}(1 + \pi + 1, 1 - \pi)^\top$, where the expression of π is given by (8). It can be concluded that $P_C(\text{prox}_f x) \neq \text{prox}_{f+\iota_C} x$.

References

- [1] Y. I. ALBER, A. N. IUSEM, AND M. V. SOLODOV, *On the projected subgradient method for nonsmooth convex optimization in a Hilbert space*, Math. Programming, 81 (1998), pp. 23–35.
- [2] F. J. ANSCOMBE, *The transformation of Poisson, binomial and negative-binomial data*, Biometrika, 35 (1948), pp. 246–254.
- [3] A. ANTONIADIS, D. LEPORINI, AND J.-C. PESQUET, *Wavelet thresholding for some classes of non-Gaussian noise*, Statist. Neerlandica, 56 (2002), pp. 434–453.
- [4] J. B. BAILLON AND G. HADDAD, *Quelques propriétés des opérateurs angle-bornés et n -cycliquement monotones*, Israel J. Math., 26 (1977), pp. 137–150.
- [5] J. BECT, L. BLANC-FÉRAUD, G. AUBERT, AND A. CHAMBOLLE, *A l^1 -unified variational framework for image restoration*, in Proceedings of the European Conference on Computer Vision (ECCV) (Prague, Czech Republic, 2004), Lecture Notes in Comput. Sci. 3024, T. Pajdla and J. Matas, eds., Springer-Verlag, Berlin, 2004, pp. 1–13.
- [6] D. P. BERTSEKAS AND J. N. TSITSIKLIS, *Parallel and Distributed Computation: Numerical Methods*, Athena Scientific, Nashua, NH, 1997.

- [7] J. M. BIOCAS-DIAS AND M. A. T. FIGUEIREDO, *A new TwIST: Two-step iterative shrinkage/thresholding algorithms for image restoration*, IEEE Trans. Image Process., 16 (2007), pp. 2992–3004.
- [8] K. BREDIES AND D. A. LORENZ, *Linear convergence of iterative soft-thresholding*, J. Fourier Anal. Appl., 14 (2008), pp. 813–837.
- [9] K. BREDIES, D. A. LORENZ, AND P. MAASS, *A generalized conditional gradient method and its connection to an iterative shrinkage method*, Comput. Optim. Appl., 42 (2009), pp. 173–193.
- [10] C. L. BYRNE, *Iterative image reconstruction algorithms based on cross-entropy minimization*, IEEE Trans. Image Process., 2 (1993), pp. 96–103.
- [11] E. J. CANDÈS AND D. L. DONOHO, *Recovering edges in ill-posed inverse problems: Optimality of curvelet frames*, Ann. Statist., 30 (2002), pp. 784–842.
- [12] E. J. CANDÈS AND J. ROMBERG, *Sparsity and incoherence in compressive sampling*, Inverse Problems, 23 (2006), pp. 969–985.
- [13] A. CHAMBOLLE, R. A. DEVORE, N. Y. LEE, AND B. J. LUCIER, *Nonlinear wavelet image processing: Variational problems, compression, and noise removal through wavelet shrinkage*, IEEE Trans. Image Process., 7 (1998), pp. 319–335.
- [14] C. CHAUX, P. L. COMBETTES, J.-C. PESQUET, AND V. R. WAJS, *A variational formulation for frame-based inverse problems*, Inverse Problems, 23 (2007), pp. 1495–1518.
- [15] C. CHAUX, L. DUVAL, AND J.-C. PESQUET, *Image analysis using a dual-tree M -band wavelet transform*, IEEE Trans. Image Process., 15 (2006), pp. 2397–2412.
- [16] G. H.-G. CHEN AND R. T. ROCKAFELLAR, *Convergence rates in forward–backward splitting*, SIAM J. Optim., 7 (1997), pp. 421–444.
- [17] P. L. COMBETTES, *Solving monotone inclusions via compositions of nonexpansive averaged operators*, Optimization, 53 (2004), pp. 475–504.
- [18] P. L. COMBETTES AND J.-C. PESQUET, *A Douglas-Rachford splitting approach to nonsmooth convex variational signal recovery*, IEEE J. Selected Topics in Signal Processing, 1 (2007), pp. 564–574.
- [19] P. L. COMBETTES AND J.-C. PESQUET, *Proximal thresholding algorithm for minimization over orthonormal bases*, SIAM J. Optim., 18 (2007), pp. 1351–1376.
- [20] P. L. COMBETTES AND V. R. WAJS, *Signal recovery by proximal forward-backward splitting*, Multiscale Model. Simul., 4 (2005), pp. 1168–1200.
- [21] I. DAUBECHIES, *Ten Lectures on Wavelets*, CBMS-NSF Regional Conf. Ser. in Appl. Math. 61, SIAM, Philadelphia, 1992.
- [22] I. DAUBECHIES, M. DEFRISE, AND C. DE MOL, *An iterative thresholding algorithm for linear inverse problems with a sparsity constraint*, Comm. Pure Appl. Math., 57 (2004), pp. 1413–1457.
- [23] F.-X. DUPÉ, M. J. FADILI, AND J.-L. STARCK, *Deconvolution of confocal microscopy images using proximal iteration and sparse representations*, in IEEE International Symposium on Biomedical Imaging, Paris, France, 2008, pp. 736–739.
- [24] F.-X. DUPÉ, M. J. FADILI, AND J.-L. STARCK, *A proximal iteration for deconvolving Poisson noisy images using sparse representations*, IEEE Trans. Image Process., 18 (2009), pp. 310–321.
- [25] J. ECKSTEIN AND D. P. BERTEKAS, *On the Douglas-Rachford splitting methods and the proximal point algorithm for maximal monotone operators*, Math. Programming, 55 (1992), pp. 293–318.

- [26] I. EKELAND AND R. TÉMAM, *Convex Analysis and Variational Problems*, Classics Appl. Math. 28, SIAM, Philadelphia, 1999.
- [27] J. A. FESSLER, *Hybrid Poisson/polynomial objective functions for tomographic image reconstruction from transmission scans*, IEEE Trans. Image Process., 4 (1995), pp. 1439–1450.
- [28] M. A. T. FIGUEIREDO AND R. D. NOWAK, *An EM algorithm for wavelet-based image restoration*, IEEE Trans. Image Process., 12 (2003), pp. 906–916.
- [29] D. HAN AND D. R. LARSON, *Frames, bases, and group representations*, Mem. Amer. Math. Soc., 147 (2000), no. 697.
- [30] J.-B. HIRIART-URRUTY AND C. LEMARÉCHAL, *Convex Analysis and Minimization Algorithms, Part I: Fundamentals*, 2nd ed., Grundlehren Math. Wiss. 305, Springer-Verlag, Berlin, Heidelberg, New York, 1996.
- [31] K. LANGE, M. BAHN, AND R. LITTLE, *A theoretical study of some maximum likelihood algorithms for emission and transmission tomography*, IEEE Trans. Med. Imaging, MI-6 (1987), pp. 106–114.
- [32] E. LE PENNEC AND S. MALLAT, *Sparse geometric image representations with bandelets*, IEEE Trans. Image Process., 14 (2005), pp. 423–438.
- [33] P. L. LIONS AND B. MERCIER, *Splitting algorithms for the sum of two nonlinear operators*, SIAM J. Numer. Anal., 16 (1979), pp. 964–979.
- [34] S. MALLAT, *A Wavelet Tour of Signal Processing*, Academic Press, San Diego, 1997.
- [35] S. MALLAT, *Geometrical grouplets*, Appl. Comput. Harmon. Anal., 26 (2009), pp. 143–290.
- [36] J. J. MOREAU, *Fonctions convexes duales et points proximaux dans un espace hilbertien*, C. R. Acad. Sci. Paris, 255 (1962), pp. 2897–2899.
- [37] J. J. MOREAU, *Proximité et dualité dans un espace hilbertien*, Bull. Soc. Math. France, 93 (1965), pp. 273–299.
- [38] M. NIKOLOVA, *Local strong homogeneity of a regularized estimator*, SIAM J. Appl. Math., 61 (2000), pp. 633–658.
- [39] D. W. PEACEMAN AND H. H. RACHFORD, JR., *The numerical solution of parabolic and elliptic differential equations*, J. Soc. Indust. Appl. Math., 3 (1955), pp. 28–41.
- [40] N. PUSTELNIK, C. CHAUX, AND J.-C. PESQUET, *A constrained forward-backward algorithm for image recovery problems*, in Proceedings of the European Signal and Image Processing Conference, Lausanne, Switzerland, 2008.
- [41] R. T. ROCKAFELLAR AND R. J.-B. WETS, *Variational Analysis*, Springer-Verlag, New York, 2004.
- [42] I. W. SELESNICK, R. G. BARANIUK, AND N. G. KINGSBURY, *The dual-tree complex wavelet transform*, IEEE Signal Processing Magazine, 22 (2005), pp. 123–151.
- [43] J. A. TROPP, *Just relax: Convex programming methods for identifying sparse signals in noise*, IEEE Trans. Inform. Theory, 52 (2006), pp. 1030–1051.
- [44] P. TSENG, *A modified forward-backward splitting method for maximal monotone mappings*, SIAM J. Control Optim., 38 (2000), pp. 431–446.
- [45] C. VONESCH AND M. UNSER, *A fast thresholded Landweber algorithm for wavelet-regularized multidimensional deconvolution*, IEEE Trans. Image Process., 17 (2008), pp. 539–549.