



HAL
open science

Hierarchical QOS-aware Routing in Multi-tier Multimedia Wireless Sensor Networks

Stéphane Lohier, Gilles Roussel, Yacine Ghamri-Doudane

► **To cite this version:**

Stéphane Lohier, Gilles Roussel, Yacine Ghamri-Doudane. Hierarchical QOS-aware Routing in Multi-tier Multimedia Wireless Sensor Networks. 10th IEEE International Conference on Management of Multimedia and Mobile Networks and Services (MMNS'07), Oct 2007, United States. pp.191-195. hal-00620150

HAL Id: hal-00620150

<https://hal.science/hal-00620150>

Submitted on 16 Apr 2012

HAL is a multi-disciplinary open access archive for the deposit and dissemination of scientific research documents, whether they are published or not. The documents may come from teaching and research institutions in France or abroad, or from public or private research centers.

L'archive ouverte pluridisciplinaire **HAL**, est destinée au dépôt et à la diffusion de documents scientifiques de niveau recherche, publiés ou non, émanant des établissements d'enseignement et de recherche français ou étrangers, des laboratoires publics ou privés.

Hierarchical and QoS-aware Routing in Multi-tier Wireless Multimedia Sensor Networks

Stephane Lohier¹, Gilles Roussel¹ and Yacine Ghamri Doudane²

¹ Université Paris-Est - IGM, 75420 Marne-la-Vallée Cedex – France

² IIE-CNAM, 18, allée Jean Rostand, 91025 Evry Cedex – France
lohier@univ-mlv.fr, roussel@univ-mlv.fr, ghamri@iie.cnam.fr

Abstract. The Wireless Multimedia Sensors Networks (WMSN) are a particular case of the Wireless Sensors Networks (WSN) as they present a lower density, a limited mobility, require more important resources and need especially QoS to transport the multimedia streams. In this paper, we propose, starting from a reference architecture of WMSN, a first approach to organize the routing in a hierarchical way while ensuring a certain level of QoS.

1 Introduction

The emergence and the development of the WMSN [1] are related to the availability of low-cost and low-consumption CMOS cameras. For this new kind of network the applications are numerous: monitoring of public or private places (concerts, borders, companies, houses...); detection, recognition and tracking of objects; automobile traffic management (speed control, car parking assistance...); industrial process control (visual inspection, automated actions...).

In these particular sensors networks, the main concerns are not only the scalability and the energy but also the QoS needed for the multimedia streams: delay for the real time flows; bandwidth on the links related to the tolerable compression ratio; limited loss ratios. Besides, the routing problem on the WSN [2] is different from that met on the MANET (many-to-one and not many-to-many); the type of routing (hierarchical or data-centric) and the QoS metrics are strongly related to the application (application aware). Moreover, for WMSN, we have to consider specific factors: low mobility, low density, heterogeneous sensors, specific nodes capabilities for the processing and the storage.

Figure 1 described our proposal for a multi-tier architecture inspired by the work of I.F. Akyldiz [1]. In this heterogeneous and hierarchical architecture, each tier corresponds to a category of video sensors with increasing performances in term of camera resolution, processing, storage and transmission capabilities. For the first tier, the sensors can be CMUCam (weak resolution of 160x255) coupled with microcontrollers allowing a minimum processing and not very greedy transmissions like in ZigBee, Bluetooth or UWB standards. The second tier can be made up of webcam and microcontrollers with more processing, more storage and mixed transmissions like ZigBee and 802.11, for example. The last tier is connected to the sink (multimedia server) and includes high resolution cameras coupled with laptop. An implementation example of this type of architecture is presented in [3].

For each tier, our proposal is to organize the topology in clusters with Cluster Head (CH), possibly Cluster Routers (CR), allowing multi-hop routing, and Cluster Terminals (CT), only able to capture video information and to transmit it. In order to

limit the interferences, the nearby clusters can use distinct transmission channels. The sensors of the various levels are not permanently mobile but can be moved.

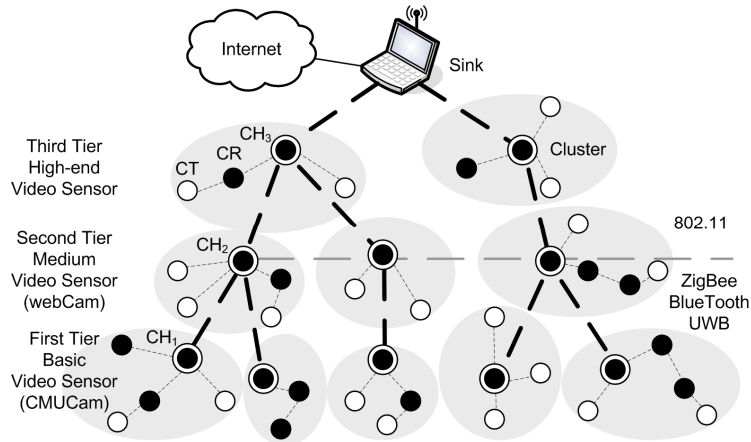


Fig. 1. Multi-tier Architecture of WMSN

Moreover, the processing, essentially carried out in the CHs and towards the collector, includes specific operations like data aggregation (images of different scenes in the same flow) and data suppression (redundant images of various sensors). For all these reasons (clustered architecture, many-to-one flows, heterogeneous capacities, processing into the CHs) we believe that a hierarchical routing is the most suited.

The following sections present a first approach for the QoS-aware hierarchical routing inside the clusters, whatever is the tier, and between the clusters of the various tier. The QoS routes setup is a first step of our proposition. Indeed, the organization of the network must remain evolutionary according to the periodic requests of nodes to join/leave a cluster and to the needs of the sink-application which will select, starting from descriptors, interesting flows (image of a particular zone with a selected resolution...). Thus, the objective here is not to guarantee a QoS constantly but to choose and receive pictures of a sufficient quality (soft QoS) by dynamically optimizing the links quality, the processing in the nodes and the choice of the sources.

2 Intra-cluster QoS Routing

The proposed QoS routing in each cluster is proactive and includes 6 stages for the cluster self-organization and the routes setup procedure (figure 2):

1. Each node self-determines its possible role (CH, CR or CT) in a cluster according to fixed or periodically re-evaluated criteria:
 - sufficient storage and energy (comparison with specific thresholds for each role);
 - for CH:
 - transmission capacities (need for the corresponding interfaces);
 - computation capacity for aggregation, suppression, compression....
2. Each CH initiates a cluster (scan channels, select a channel, select a cluster id...).
3. CR and CT carry out a research for a cluster:
 - CR/CT broadcast a message for discovery: *Cluster_Discovery_Request (Scan Channels...)*;

- response of the nearby CHs (and/or CR in case of multi-hop) with a *Cluster_Discovery_Response (Cluster_Description...)*.

4. Estimation of a cost for the concerned links (use of a function integrating the selected QoS metrics, see section 4) starting from the exchange of the *Cluster_Discovery* messages of stage 3.

5. CR and CT choose a CH (or a CR) according to the previous QoS estimate and join a cluster:

- CR/CT send a message *Cluster_Join_Request (Cluster id...)*;
- response of the selected CH (or CR) with a *Cluster_Join_Response (Cluster id, Network addresses...)*.

The associations of the CRs and the CTs are carried out in a recursive way: for the multi-hop routing, a CT out of the CH range has to wait for the association of a nearby CR to obtain an answer and to join in its turn a cluster.

6. The CR informs its CH (or its nearby CR which is closer to CH) of its router's role:

- CR send a message *Cluster_Router_Request (Cluster id...)*;
- Response of CH (or CR) with a *Cluster_Router_Response (Cluster id, Network address block...)*. In its response, the CH specifies the address block (or the sub-block for the response of a CR) which can be used by the CR for its CT (or its lower level CR).

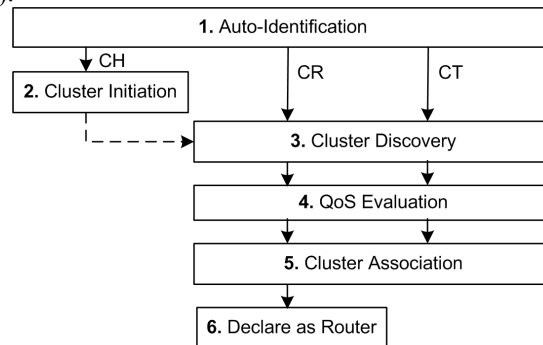


Fig. 2. Intra-cluster Routing Algorithm

After one or several exchange cycles, each CR or CT knows the address of its CH or its nearby CR (the one with the lower cost toward the CH); each CH has a routing table for all its nodes. The routing is hierarchical: all the data go towards CH. According to the network dynamicity, the various stages are periodically re-launched.

3 Inter-tier QoS Routing

The routing between the CHs of the various tiers (figure 1) proceeds in 5 stages according to the same hierarchical and recursive principle:

1. The CH₁ (CH of first tier) broadcast to know the CH₂.
2. The CH₁ choose a CH₂ according to a cost estimated on the links (see section 4).
3. The CH₂ broadcast in their turn on the corresponding interface to know the CH₃.
4. The CH₂ choose a CH₃ according to a cost estimated on the links.
5. The CH₃ broadcast to know the sink. In this last case, the cost is also computed to evaluate if, according to its position and its environment, the CH₃ can obtain a sufficient QoS on the link towards the sink.

After sufficient exchanges, each CH_i knows the address of its CH_{i+1} or of the sink (transmitted with the broadcast response). Each node of each cluster can thus transmit towards the sink and conversely (the sink knows the CH_3 which knows the $CH_2\dots$).

4 Estimation of the links cost

During the messages exchange of the discovery stage (between CT/CR and CR/CH or between CH_i and CH_{i+1}), the cost on each possible links is periodically estimated and compared (i) with a threshold to decide if the node is under the conditions (range, noise, contentions...) to obtain a sufficient QoS and (ii) with the costs on the other links to choose the most efficient CR/CH. The cost function on a link between two nodes i and j (j being the closest to the sink) can be expressed according to the chosen QoS metrics:

$$C_{ij} = c_1 \times f(\text{delay}_{ij}) + c_2 \times f(\text{SNR}_{ji}) + c_3 \times f(e_{ij}) + c_4 \times f(\text{energy}_i) + c_5 \times f(\text{energy}_j)$$

- $f(\text{delay}_{ij})$ is a function of the delay for a data packet transmitted from i towards j ;
- $f(\text{SNR}_{ji})$ is a function of the Signal/Noise Ratio measured from j towards i ;
- $f(e_{ij})$ gives the error rate for the data packets transmitted from i towards j ;
- $f(\text{energy}_i)$ and $f(\text{energy}_j)$ give respectively the remaining energy in i and j .

The choice of the coefficients c_1 to c_5 depends on the application and the type of traffic (the delay is more important than the loss rate for streaming...).

Besides, for “real time” applications, it is necessary to control the end-to-end delay. Rather than using higher level protocols like RTP and RTCP which involve overload we can evaluate this global delay at the routing level, starting from the delay on each link and the knowledge of the route towards the sink, both information being provided by our routing protocol. The loss rate on a path from a CT towards the sink can also be evaluated, starting from the successive loss rates and the knowledge of the route.

5 Conclusion

In this paper, we presented a first approach for QoS routing in the WMSN. Insofar as the nodes are very few, not very mobile, and heterogeneous in term of resources, a hierarchical routing passing by “Cluster Head” is the most suitable. To introduce QoS, we proposed a cost function, estimated on a hop and which can be extended on several hops or the complete route towards the sink. The continuation of this study will be directed to (i) the complete specifications and the tests of the routing algorithm and the cost function, in connection with the possible MAC layers (ZigBee, UWB, 80211) and (ii) the specification of the data exchanges and processing after the first stage of QoS routing.

References

1. I.F. Akyildiz et al., “A survey on wireless multimedia sensor networks”, Computer Network, 2006.
2. K. Akkaya, M. Younis, “A survey of routing protocols in wireless sensor networks”, Ad Hoc Network (Elsevier), 2005.
3. P. Kulkarni, D. Ganesan and P. Shenoy, “The Case for Multi-tier Camera Sensor Networks”, Proceedings of the Fifteenth International Workshop on Network and Operating Systems Support for Digital Audio and Video (NOSSDAV), 2005.