



HAL
open science

Who is *Oxyrrhis marina*? Morphological and phylogenetic studies on an unusual dinoflagellate

Christopher D Lowe, Patrick J Keeling, Laura E Martin, Phill C Watts, David Montagnes

► **To cite this version:**

Christopher D Lowe, Patrick J Keeling, Laura E Martin, Phill C Watts, David Montagnes. Who is *Oxyrrhis marina*? Morphological and phylogenetic studies on an unusual dinoflagellate. *Journal of Plankton Research*, 2010, <10.1093/plankt/FBQ110>. <hal-00616891>

HAL Id: hal-00616891

<https://hal.science/hal-00616891v1>

Submitted on 25 Aug 2011

HAL is a multi-disciplinary open access archive for the deposit and dissemination of scientific research documents, whether they are published or not. The documents may come from teaching and research institutions in France or abroad, or from public or private research centers.

L'archive ouverte pluridisciplinaire **HAL**, est destinée au dépôt et à la diffusion de documents scientifiques de niveau recherche, publiés ou non, émanant des établissements d'enseignement et de recherche français ou étrangers, des laboratoires publics ou privés.



HAL Authorization



Who is *Oxyrrhis marina*? Morphological and phylogenetic studies on an unusual dinoflagellate

| | |
|-------------------------------|--|
| Journal: | <i>Journal of Plankton Research</i> |
| Manuscript ID: | JPR-2010-137.R1 |
| Manuscript Type: | Review |
| Date Submitted by the Author: | 28-Jul-2010 |
| Complete List of Authors: | Lowe, Christopher; University of Liverpool, School of Biological Sciences Keeling, Patrick; University of British Columbia, Department of Botany Martin, Laura; University of Liverpool, School of Biological Sciences Watts, Phill; Univ. Liverpool, Biol Sci Montagnes, David; Univ Liverpool, Bio Sci; University of Liverpool, School of Biological Sciences |
| Keywords: | Protist diversity, phylogenetic species, intraspecific variation |
| | |

SCHOLARONE™
Manuscripts

Lowe *et al.* 2. *Oxyrrhis marina* taxonomy-phylogeny

To be submitted to Journal of Plankton Research

OXYRRHIS MARINA SPECIAL ISSUE; 2010

Who is *Oxyrrhis marina*? Morphological and phylogenetic studies on an unusual dinoflagellate

CHRIS D. LOWE^{1*}, PATRICK J. KEELING², LAURA E. MARTIN¹, CLAUDIO SLAMOVITS³, PHILLIP C. WATTS¹, DAVID J. S. MONTAGNES¹

¹SCHOOL OF BIOLOGICAL SCIENCES, UNIVERSITY OF LIVERPOOL, BIOSCIENCES BUILDING, CROWN STREET, LIVERPOOL, L69 7ZB. UK.

²DEPARTMENT OF BOTANY, UNIVERSITY OF BRITISH COLUMBIA, 3529-6270 UNIVERSITY BOULEVARD, VANCOUVER, BC, V6T 1Z4, CANADA, ³DEPARTMENT OF BIOCHEMISTRY AND MOLECULAR BIOLOGY, DALHOUSIE UNIVERSITY, HALIFAX, NS, CANADA

*CORRESPONDING AUTHOR: clowe@liv.ac.uk

Lowe *et al.* 2. *Oxyrrhis marina* taxonomy-phylogeny

ABSTRACT

Oxyrrhis marina is an extensively studied morphospecies and a common protist model used to examine a range of ecological processes. Further, as a result of a number of unusual cytological and genetic features, *Oxyrrhis* is increasingly a target for the study of evolutionary patterns and genome organisation within the Alveolata. However, a small number of early morphological studies and recent phylogenetic data suggest that *O. marina* represents more than one species. As different research groups employ different *O. marina* isolates (which are potentially highly divergent strains or different species), the context in which comparisons between isolates can be made is difficult to assess. In this paper we explore the literature that has contributed to the definition of *O. marina*, highlighting the unusual characteristics possessed by *O. marina* that have motivated much of the study on this organism and informed its key phylogenetic position. In addition, we assess historical and contemporary evidence for multiple *Oxyrrhis* species. Based on this assessment, in particular recent molecular genetic data, we assert that *O. marina*, represents two species: *O. marina* and *O. maritima*. Based on historical observations we also indicate that a third species (*O. tenticulifera*) may occur, though there are no contemporary data to support or refute this designation. Extensive cryptic diversity has important implications for researchers studying *Oxyrrhis*: caution must be exercised in characterising *Oxyrrhis* isolates for experimental study (i.e. it is inappropriate to report assessments concerning poorly characterised isolates), and comparative studies of multiple isolates are required to assess individual, population, and species level variation in the genus. Finally, in a broader context, the ecological and evolutionary processes driving diversity in free-living protists remains poorly understood. Model protists such as *O. marina* and *O. maritima* for which we are beginning to recognise and characterise an extensive pool of variation, present ideal opportunities to unravel these fundamental processes.

Key Words: Protist diversity, phylogenetic species, intraspecific variation

Lowe *et al.* 2. *Oxyrrhis marina* taxonomy-phylogeny

1
2
3
4
5
6
7
8
9
10
11
12
13
14
15
16
17
18
19
20
21
22
23
24
25
26
27
28
29
30
31
32
33
34
35
36
37
38
39
40
41
42
43
44
45
46
47
48
49
50
51
52
53
54
55
56
57
58
59
60

For Peer Review

Lowe *et al.* 2. *Oxyrrhis marina* taxonomy-phylogeny

INTRODUCTION

Oxyrrhis marina is an extensively studied morphospecies (Montagnes *et al.*, this issue-a), exhibiting a wide geographic distribution (Watts *et al.*, this issue). Much study of *O. marina* has been motivated by the recognition that it possesses unusual cytological and genetic features (e.g. Leander and Keeling, 2004; Slamovits *et al.*, 2007); accordingly, *O. marina* has become a significant target for the study of evolutionary patterns and genome organisation within the Alveolata (Slamovits *et al.*, 2007; Zhang *et al.*, 2007; Slamovits and Keeling, this issue). Despite this, the study of variability within the *O. marina* morphospecies has been ignored.

Recent work indicates that levels of genetic divergence within this taxon may be extensive, which coupled with substantial physiological variation, is potentially sufficient to infer that *O. marina* represents more than one species (e.g. Lowe *et al.*, 2010). Such diversity is alarming, as researchers around the world continue to isolate strains and conduct experiments on this “species” (Fig. 1). Here, we provide a brief historical guide to the morphological and phylogenetic literature that has defined *Oxyrrhis* - we highlight why *O. marina* is an important model organism, but also indicate that this taxon harbours extensive cryptic diversity, which has remained poorly described.

Superficially, *O. marina* is easily recognised (e.g. Dodge, 1982) and easy to isolate from the natural environment (Lowe *et al.*, this issue); while such characteristics make *O. marina* simple and practical to study, they also present significant problems. Approximately 40 *O. marina* isolates are reported in the literature. However, most of these are poorly characterised beyond their gross morphology. Consequently, the bulk of studies are not interpretable in a comparative context, and despite recent evidence of substantial genetic variation (Lowe *et al.*, 2010), there are limited molecular, physiological, morphological, or ultrastructural data to corroborate such diversity or aid the delineation of potentially multiple

Lowe *et al.* 2. *Oxyrrhis marina* taxonomy-phylogeny

1
2
3 species in the genus. This presents a dilemma: *O. marina* is commonly employed as a
4
5 ‘model’ to examine a broad range of ecological, physiological, and behavioural responses
6
7 (see other papers in this special issue). However, different research groups employing
8
9 different isolates of *O. marina* are potentially working on highly divergent strains or even
10
11 different species. Thus, the context in which comparisons between isolates can be made is
12
13 difficult to assess.
14
15
16

17
18 Indeed, a review of the literature since 1950 (Fig. 1a, b; Table 1) indicates that ~160
19
20 studies examined various aspects of *O. marina* biology and reveals that: 1) most studies
21
22 examine a single strain (74 examined one strain, 64 provided no isolate information, 14 were
23
24 not traceable by the authors); 2) many isolates are reported only once in the literature (38
25
26 isolates are reported, 30 of which are reported once or twice); and 3) most laboratories
27
28 (research groups) work on only a single strain. As a result, there are few comparative studies,
29
30 and our ability to resolve potential strain and species differences are limited. The articles in
31
32 this special issue expand on various aspects of *O. marina* biology. To place these, and future
33
34 work, in a taxonomic context, it is essential that we first explore our current understanding of
35
36 who *O. marina* is and the extent of diversity in this taxon.
37
38
39
40

41
42 In this paper, two major issues are examined. First, we explore the morphological,
43
44 cytological, and molecular literature that has contributed to the definition of *O. marina* -
45
46 highlighting in particular the historical and contemporary evidence for multiple *Oxyrrhis*
47
48 species. In parallel, we review the unusual characteristics possessed by *O. marina* that have
49
50 motivated much of the study on this organism and informed its key phylogenetic position
51
52 within the alveolates. We do not purport to have conducted an exhaustive review of the
53
54 literature (which is extensive and covers >160 years); instead, we highlight key studies and
55
56 provide sufficient guidance to allow researchers to further explore the topic. Ultimately, we
57
58 indicate that while the phylogenetic position of *O. marina* is now reasonably well established,
59
60

Lowe *et al.* 2. *Oxyrrhis marina* taxonomy-phylogeny

in other regards it remains poorly characterised. Most critically, we assert that *O. marina*, *sensu lato*, actually represents more than one species, for which we provide new diagnoses and a justification for this reclassification. Finally, we indicate that the recognition of extensive diversity within the *Oxyrrhis* genus provides productive new avenues of research based on this important model organism.

MORPHOLOGICAL STUDIES OF *OXYRRHIS MARINA*

Gross morphology

Oxyrrhis marina Dujardin, 1841 (Fig. 2a, Table 2) was originally described as oblong, oval bodied, with pointed anterior, obliquely notched anteriorly, possessing “several” flagella protruding sideways from the notch centre. Diagnostic features were: colourless, sub-cylindrical, rough bodied cell, with rounded posterior, 0.05 long (no units, but remarks on magnification of the original figure indicate 44 μm long). The type location was the Mediterranean (likely on the French coast), but, as was typical of protistan studies of the time, no type material was deposited.

The first main revision by Saville-Kent (1880) provided further details (Fig. 2b, Table 2), based on the literature and observations of isolates from Jersey (UK). The revision provided information on: two flagella, one extending and the other coiled within the oral aperture; swimming and feeding behaviour (e.g. the longitudinal flagellum being responsible for trapping prey, while the transverse flagellum pushes it into the oral cavity); division by transverse fission; an anterior contractile vacuole; and, in illustrations, a posterior ventral bulge (or tentacular lobe) within the posterior ventral depression.

Several other older *O. marina* reviews exist. Senn (1911) extensively reviewed the literature and provided new details (Fig. 2c), indicating: no observable contractile vacuole; the flagella insert on either side of the ventral bulge; *O. marina* was a dinoflagellate, possibly

Lowe *et al.* 2. *Oxyrrhis marina* taxonomy-phylogeny

1
2
3 related to *Gymnodinium*; and there was only one *Oxyrrhis* species. Hall (1924) provided a
4
5 later review, which included new observations of binary fission (Fig. 2d). However, of the
6
7 older literature we suggest that Kofoid and Swezy (1921) provide the best synthesis and most
8
9 rigorous diagnosis of the genus and species (for veracity, reported in full below); they also
10
11 supported the notion that there is only one species of *Oxyrrhis*, placed within the
12
13
14
15
16
17
18
19
20
21
22
23
24
25
26
27
28
29
30
31
32
33
34
35
36
37
38
39
40
41
42
43
44
45
46
47
48
49
50
51
52
53
54
55
56
57
58
59
60

Gymnodinioidae.

Diagnosis of Oxyrrhis

“Body subovoidal, asymmetrically contracted on the left posteriorly; girdle postmedian, incomplete distally, lacking postmargin; sulcus spreading posteroventrally, divided anteriorly by pendant tentacular lobe; transverse flagellum originating to the left and the longitudinal to the right of the lobe; nucleus with beaded chromatin; marine.” (Kofoid and Swezy, 1921).

Diagnosis of O. marina

“Body elongate oval, asymmetrical posteriorly; girdle imperfect on right side, without a postmargin; flagella midventral; stout tentacle-like lobe pendant between the two flagella, dividing the broad undeveloped ventral sulcus; colourless; length, 10-37 μm ; marine.” (Kofoid and Swezy, 1921).

Three other free-living *Oxyrrhis* species have been described: *O. phaeocysticola* Scherffel, 1900; *O. tentaculifera* Conrad, 1939; and *O. maritima* van Meel, 1969 (Fig. 3, Table 2). *Oxyrrhis phaeocysticola* (Fig. 3a) was distinguished as *Oxyrrhis*-shaped, including possessing a ventral bulge, but its swimming pattern was flagella first, in contrast to *O. marina*, which swims with the flagella in the posterior (e.g. Scherffel, 1900). *Oxyrrhis maritima* (Fig. 3b) and *O. tentaculifera* (Fig. 3c) were both isolated from Belgian coastal waters. *Oxyrrhis maritima* was ambiguously distinguished as larger and rounder than *O. marina*, while *O. tentaculifera* was defined as possessing a long tentacle (probably a longer

1
2
3
4
5
6
7
8
9
10
11
12
13
14
15
16
17
18
19
20
21
22
23
24
25
26
27
28
29
30
31
32
33
34
35
36
37
38
39
40
41
42
43
44
45
46
47
48
49
50
51
52
53
54
55
56
57
58
59
60

Lowe *et al.* 2. *Oxyrrhis marina* taxonomy-phylogeny

version of the ventral bulge indicated above), extending from the notch, but otherwise, it was superficially similar to *O. marina*. *Oxyrrhis phaeocysticola* was moved to the genus *Hemistasia* (Elbrächter *et al.*, 1996), thus creating the new combination *Hemistasia phaeocysticola*. *Oxyrrhis tentaculifera* and *O. maritima* were synonymised with *O. marina* by Dodge (1982), whose reasoning was that as *O. marina* exhibits considerable morphological variation, these two species were insufficiently different from *O. marina*. We suggest that the description by Conrad (1939) of *O. tentaculifera* is sufficiently distinct (particularly the presence of a conspicuous, long tentacle) to stand as a distinct species, though the lack of corroborating observations of this morphotype limits further consideration. Regardless, the question of multiple *Oxyrrhis* species has not been revisited until relatively recently (see below); thus the current genus *Oxyrrhis* contains only the original species, *O. marina*.

Other observations of gross morphology are distributed throughout the literature (Fig. 2). For example, isolates of *O. marina* collected from Venice were illustrated with a ventral bulge and were noted to vary extensively in cell size and shape in response to a range of osmotic conditions (Diskus, 1955; Fig. 2e). Cell shape and size appear to be highly variable in *O. marina*: Triemer (1982) noted changes in shape following food ingestion; concurrently, in our own experience of culturing large numbers of *O. marina* isolates, variation in size occurs depending on food concentration and culture status (e.g. Kimmance *et al.*, 2006). Furthermore, our own recent observations on clonal isolates collected across Europe suggest clone-specific variation in cell size (C. Lowe, unpublished data), though whether these differences are systematic and correlated with phylogenetic identity is not yet clear.

***Oxyrrhis* - an unusual dinoflagellate**

1
2
3
4
5
6
7
8
9
10
11
12
13
14
15
16
17
18
19
20
21
22
23
24
25
26
27
28
29
30
31
32
33
34
35
36
37
38
39
40
41
42
43
44
45
46
47
48
49
50
51
52
53
54
55
56
57
58
59
60

Lowe *et al.* 2. *Oxyrrhis marina* taxonomy-phylogeny

As noted above, early studies recognised *O. marina* to be a dinoflagellate, though a somewhat unusual one. Virtually all of the subsequent morphological and ultrastructural work has focused on providing data to characterise *O. marina* and to assess its affinity within the alveolates. Below, we briefly review the morphology of *O. marina*, moving from larger to smaller structures, and highlight significant findings.

Cysts

There are two independent descriptions of cyst formation in *Oxyrrhis*. Hall (1924) noted thin-membrane covered cysts induced by both excess and lack of food – to our knowledge this is the only report of cyst formation in *O. marina*. A more recent study indicated that *Oxyrrhis* sp. formed robust adherent cysts (Jonsson, 1994). In this work *Oxyrrhis* sp., from intertidal rock pools of Brittany, France, formed 10 µm spherical cysts that adhered to the substrate ~0.5 h prior to pools being covered by the incoming tide; excystment occurred 18 h later as the tide receded a second time, and *Oxyrrhis* sp. were then free swimming for 6 h. Though gross morphology, based on scanning electron microscopy, suggested that the cells observed in this study were identical to *O. marina*, Jonsson (1994) conservatively referred to '*Oxyrrhis* sp.' as circatidal adherent cysts have not been reported in *O. marina*.

The ventral bulge or tentacle

This medial, ventral structure is well documented in the earlier literature, and as indicated above, its length was used to diagnose *O. tentaculifera*. In *O. marina* it is relatively small (~5 µm), is constricted proximally, and is located below the horizontal ridge (Dodge and Crawford, 1971a, b). See *Cortical microtubular arrangement*, below for more details of this structure.

Flagellar structure

1
2
3
4
5
6
7
8
9
10
11
12
13
14
15
16
17
18
19
20
21
22
23
24
25
26
27
28
29
30
31
32
33
34
35
36
37
38
39
40
41
42
43
44
45
46
47
48
49
50
51
52
53
54
55
56
57
58
59
60

Lowe *et al.* 2. *Oxyrrhis marina* taxonomy-phylogeny

The structure and function of the *O. marina* flagellar apparatus is well documented (Dodge and Crawford, 1971; Cachon *et al.*, 1988; Cachon *et al.*, 1994; Godart *et al.*, 1992; Roberts, 1985; Roberts and Roberts 1991) and differs from those of other dinoflagellates, in that the transverse flagellum lacks a broad striated strand (Cachon *et al.*, 1988a,b). Unique features are that the transverse flagellum of *O. marina* possesses a row of complex mastigonemes, while the longitudinal flagellum possesses simple mastigonemes; both flagella are covered with scales, except at the proximal ends (see *Scales* below, Clarke and Pennick, 1972; Fig. 4a).

The flagellar root system has been studied in detail in two strains (from Newport, Rhode Island, and Texas Culture Collection strain LB1974; Roberts, 1985); this and other studies indicate that *O. marina* differs from other dinoflagellates in several respects, including: the breadth of the posteriorly directed microtubular root; the orientation of connective structures and electron dense core of the ventral microtubular root; and the occurrence of fibres that parallel the flagella (Roberts, 1985, Roberts and Roberts, 1991).

The two flagella of *O. marina* differ in function, as recognised by early researchers, e.g. Saville Kent (1880) and Senn (1911). Structure and function of the two flagella were rigorously investigated using an isolate from Villefranche-sur-Mer (Cachon *et al.*, 1988); this study indicated that the waves produced by the longitudinal flagellum are planar and symmetrical, and the transverse flagellum, which is coiled, produces helical waves and is responsible for the cork-screw like swimming motion, propelling the cell forward (see Boakes *et al.*, this issue).

Scales

Oxyrrhis marina is distinguished from other dinoflagellates by possessing flagellar and body scales (Clarke and Pennick, 1972, 1976). Scales cover both flagella of two isolates, LB1133/1 (isolated from Långskar, Finland - now culture CCAP1133/5, maintained by the

1
2
3
4
5
6
7
8
9
10
11
12
13
14
15
16
17
18
19
20
21
22
23
24
25
26
27
28
29
30
31
32
33
34
35
36
37
38
39
40
41
42
43
44
45
46
47
48
49
50
51
52
53
54
55
56
57
58
59
60

Lowe *et al.* 2. *Oxyrrhis marina* taxonomy-phylogeny

Culture Centre of Algae and Protozoa, Oban) and LB1133/2 (isolated from Essex, UK).

Scales also occur on the whole cell surface of three isolates: LB1133/2, LB1133/4 (isolated from Bahrain – now CCAP1133/4, maintained by CCAP, Oban), and a sample from Norfolk (Clarke and Pennick, 1976).

Both flagellar and body scales are ellipsoidal or circular spiral plates 0.15-0.175 x 0.2 μm , (Fig. 4d), each having a tight spiral of two to five turns (Fig. 4b,c, Clarke and Pennick, 1972, 1976). The scales cover the flagella, although they may be absent close to the cell; they are arranged lengthways around the flagella, forming a helix, with rows overlapping. On the transverse flagellum the row of mastigonemes runs parallel to a row of scales (Fig. 4b). Imbrication of body scales appear in some (but not all) areas of the cell surface (Clarke and Pennick, 1976).

Trichocysts

As noted in some of the earliest descriptions, the cell surface is rough, with staggered double rows of projections running along the cell length (Clarke and Pennick, 1976); these are concentrated at the anterior end and appear to be associated with the region where trichocysts abut the cell surface. Dodge and Crawford (1971) suggest that the trichocysts of *O. marina* are similar in structure to those of other dinoflagellates, though possibly more rigorous study will reveal differences, as more recent detailed studies of extrusomes of other alveolates show unique structures (e.g. Cavalier-Smith and Chao, 2004).

Cortical microtubular arrangement

The cortical structure of *O. marina* is similar to that of other alveolates (see Dodge and Crawford, 1971a); however, its microtubular cytoskeleton differs from that of dinoflagellates (see Roberts *et al.*, 1993 Fig. 17 for a comparison of cortical microtubular arrangements in *O. marina* and dinoflagellates). The longitudinal microtubules of *O. marina* are intact from pole to pole, and do not abut the transverse microtubules; this is in contrast to

1
2
3
4
5
6
7
8
9
10
11
12
13
14
15
16
17
18
19
20
21
22
23
24
25
26
27
28
29
30
31
32
33
34
35
36
37
38
39
40
41
42
43
44
45
46
47
48
49
50
51
52
53
54
55
56
57
58
59
60

Lowe *et al.* 2. *Oxyrrhis marina* taxonomy-phylogeny

typical dinoflagellates in which the transverse microtubules about the longitudinal at both the anterior and posterior ridges of the cingulum. Notably, *O. marina* does have a distinct transverse band associated with the ventral ridge, which may be homologous to the structures underlying the anterior ridge of the cingulum in other dinoflagellates. In contrast, there appears to be no transverse microtubules, homologous to those of the lower region of the cingulum (Roberts *et al.*, 1993). The ventral bulge (see above) has been suggested to be a reduced hyposome (i.e. the posterior half of the cell below the cingulum; Fig. 5; Brown, 1988), but the lack of associated transverse microtubules prevents comparison to the same structures in other dinoflagellates.

Mitotic apparatus, division, and chromatin structure

Dinoflagellates exhibit unusual nuclei, with a range of structural and molecular modifications that distinguish them from the 'typical' eukaryote model of nuclear and chromosomal organisation (Hausmann *et al.*, 2003). For some time, it has been recognised that the nuclear structure of *O. marina* differs from that of the typical dinoflagellate (e.g. Hall, 1924, but see Keeling and Slamovits this issue). *Oxyrrhis marina* generates an intranuclear mitotic spindle during mitotic cell division, in contrast to the extranuclear spindle of most dinoflagellates (Cachon *et al.*, 1979; Triemer, 1982; Gao and Li, 1986). As in other dinoflagellates, the nuclear envelope of *O. marina* persists throughout mitosis. However, unlike dinoflagellates, plaques (from which the mitotic spindle is generated) appear on the nuclear envelope during prophase (Triemer, 1982; Gao and Li, 1986). Chromosomal and chromatin structures in dinoflagellates are also atypical of eukaryotes and exhibit birefringent periodic banded or arched structures (Cachon *et al.*, 1979; Triemer, 1982; Gao and Li, 1986); these features have not been reported in *O. marina*, although in other respects its condensed chromosomal structure is dinoflagellate-like. Additionally, the typical eukaryote complement of DNA-associated histones are absent in dinoflagellates, and again

Lowe *et al.* 2. *Oxyrrhis marina* taxonomy-phylogeny

O. marina differs from dinoflagellates by possessing a single 23 KDa histone-like DNA associated protein (Kato *et al.*, 1997).

Of final note, to our knowledge there are no data to indicate whether *O. marina* is haploid, diploid, or polyploid. Most dinoflagellates are haploid (Hausmann *et al.*, 2003), although diploidy occurs in some genera (e.g. *Noctiluca*, Zingmark, 1970; Pfiester and Anderson, 1987; Montagnes *et al.*, this issue-b).

***Oxyrrhis* taxonomy and phylogeny**

The above morphological, ultrastructural, and cytological studies provide extensive data to infer the taxonomic position of *O. marina* relative to other alveolates; indeed, much of the ultrastructural study of *O. marina* has been stimulated by the recognition that it is a somewhat aberrant dinoflagellate. Two conflicting taxonomic positions have been proposed for *O. marina*: either basal to (or an early branch of) the dinoflagellate lineage, suggesting an ancestral state; or derived, occurring within the Gonyaulaceae. Several authors (e.g. Cachon *et al.*, 1979; Taylor, 1980; Loeblich, 1984; Kato *et al.*, 2000), support the basal position for *O. marina* based on the argument that the flagellar apparatus, reduced sulcus and girdle, cortical microtubular structure, and the apparent intermediate nuclear and chromosomal organisation are all primitive. Contrastingly, other authors (see Cavalier-Smith and Chao, 2004) infer a highly derived position for *O. marina*, based on rDNA phylogenies and the subsequent argument that the presence of histone-like proteins, an intranuclear mitotic spindle, and the reduction of sulcus and cingulum grooves support this derived position (see Cavalier-Smith and Chao, 2004 for their reasoning).

Two striking conclusions arise from a summary of the morphological literature: 1) *O. marina* is a dinoflagellate, but its position within the group is uncertain; and 2) despite early descriptions of multiple *Oxyrrhis* species, most studies accept the opinions of Kofoed and

1
2
3
4
5
6
7
8
9
10
11
12
13
14
15
16
17
18
19
20
21
22
23
24
25
26
27
28
29
30
31
32
33
34
35
36
37
38
39
40
41
42
43
44
45
46
47
48
49
50
51
52
53
54
55
56
57
58
59
60

Lowe *et al.* 2. *Oxyrrhis marina* taxonomy-phylogeny

Sweezy (1921) and Dodge (1982) that only the single species *O. marina* exists. In the next section, we examine molecular phylogenetic data to further consider these two issues.

Molecular phylogenetic studies of Oxyrrhis marina

Genetic data have inevitably been applied to examine the taxonomic and phylogenetic affiliation of *O. marina*. Molecular genetic studies provide support for both proposed positions of *O. marina*, though the majority of recent studies support that it is an early branching dinoflagellate, or a close ancestral lineage, branching after perkinsids. The first phylogenetic study to include *O. marina* (Lenaers *et al.*, 1991), assessed phylogenetic relatedness within the dinoflagellates based on sequence data for two divergent domains of the 24S rRNA gene in 12 species. This study supported a basal position, placing *O. marina* as an early emerging dinoflagellate, preceding the Peridiniales. A subsequent study (Saldarriaga *et al.*, 2003), based on SSU rDNA and sequences for actin, alpha-tubulin, and beta-tubulin highlighted the two opposing phylogenetic positions. Phylogenies based on SSU rDNA sequences indicated a derived branching position within the Gonyaulacales but noted that the affiliation should be interpreted cautiously as a result of the highly divergent *O. marina* rDNA sequence (Saldarriaga *et al.*, 2003). Conversely, in the same study actin, alpha-tubulin, and beta-tubulin genes of *O. marina* were not noticeably divergent, and in phylogenetic trees based on all three proteins individually and in combination *O. marina* branched at the base of the dinoflagellate lineage. A study using these genes plus HSP90 achieved similar results (Leander and Keeling, 2004). Furthermore, a recent analysis including an extensive dataset with 30 protein-coding genes strongly supported the basal position of *Oxyrrhis* (Slamovits *et al.*, 2007). Finally, studies of mitochondrial genome structure and RNA editing mechanisms also lend support to an early branching position for *O. marina* relative to the dinoflagellates; in particular since *Oxyrrhis* was found to completely

Lowe *et al.* 2. *Oxyrrhis marina* taxonomy-phylogeny

1
2
3 lack mitochondrial RNA editing, which is found in all other dinoflagellates (Slamovits *et al.*,
4
5 2007; Zhang and Lin, 2008). Although some authors (e.g. Cavalier-Smith and Chao, 2004)
6
7 have maintained a derived position for *O. marina*, this hypothesis has not received further
8
9 support and in the light of the current wealth of data (i.e. multiple protein phylogenies,
10
11 mitochondrial genome structure, and RNA editing mechanisms) we assume that the basal
12
13 position of *Oxyrrhis* relative to dinoflagellates is the correct interpretation.
14
15
16
17
18
19

20 **Contemporary evidence for cryptic *Oxyrrhis* species**

21
22 The above review highlights that the taxonomic and phylogenetic affiliations of *O. marina*
23
24 are well described, if not entirely agreed upon. In contrast, our understanding of genetic,
25
26 physiological, and morphological variability within *O. marina* is limited. Indeed, while early
27
28 morphological studies argue for multiple *Oxyrrhis* species, assessments of variability
29
30 between different *O. marina* strains and isolates are rare. Given the increasing number of
31
32 examples of cryptic diversity in a broad range of free-living protist taxa (e.g. Darling *et al.*,
33
34 2004; Slapeta *et al.*, 2005), this lack of study represents an important oversight. In fact,
35
36 recent studies of *O. marina* suggest that high levels of genetic diversity occur within the
37
38 current *O. marina* morphospecies (Cavalier-Smith and Chao, 2004; Lowe *et al.*, 2005, 2010).
39
40 In the following section we examine assessments of variability within *O. marina*, highlight
41
42 that current observations of morphological and cytological variation are scarce and indicate
43
44 that genetic studies reveal extensive diversity. Based on the strength of the molecular
45
46 phylogenetic data, we propose that there are two *Oxyrrhis* species - *O. marina* and *O.*
47
48 *maritima* - for which we provide new diagnoses (the existence of a third species, *O.*
49
50 *tenticulifera*, is also discussed below). Ultimately, this re-designation reflects the extent of
51
52 diversity within the genus and provides an important framework to direct future comparative
53
54 morphological, physiological, and genetic studies.
55
56
57
58
59
60

1
2
3
4
5
6
7
8
9
10
11
12
13
14
15
16
17
18
19
20
21
22
23
24
25
26
27
28
29
30
31
32
33
34
35
36
37
38
39
40
41
42
43
44
45
46
47
48
49
50
51
52
53
54
55
56
57
58
59
60

Lowe *et al.* 2. *Oxyrrhis marina* taxonomy-phylogeny

Combining morphological and molecular data

Six studies have examined variation between *O. marina* isolates (Table 1). Of the morphological and cytological studies, only Clarke and Pennick (1972, 1976) and Roberts (1985) compared *O. marina* isolates, based on scales and flagellar structure, respectively, and neither noted variation. The most extensive assessments of diversity within *O. marina* are phylogenetic, though these too are limited. Three studies have quantified the level of genetic variation between *O. marina* isolates based on a single gene (rDNA) and a small number of isolates ($n = 2, 3,$ and 11 for Saldarriaga *et al.*, 2003; Cavalier-Smith and Chao, 2004; Lowe *et al.*, 2005, respectively). These studies indicate: 1) an exceptionally high level of divergence in the basal *O. marina* branch (Saldarriaga *et al.*, 2003) and 2) two divergent lineages that have been proposed as separate species (Cavalier-Smith and Chao, 2004; Lowe *et al.*, 2005). Following this, a recent assessment of diversity within *O. marina* examined 5.8S ITS rDNA and mitochondrial cytochrome c oxidase I (COI) in 58 *O. marina* isolates; this work supported two highly divergent lineages, each composed of two distinct clades (Fig. 6; Lowe *et al.*, 2010). Based on the COI gene, sequence divergence between lineages was 10.5 % (within lineage divergence was <1% in both cases). Mitochondrial COI sequences in particular are now commonly used to aid species delineations across a broad range of organisms (Hebert *et al.*, 2003; Sites and Marshall, 2003; Frezal and Leblois, 2008), with for example, 3-11% divergence (at COI) used to delineate species across a range of protist taxa (e.g. Evans *et al.*, 2007; Chantangsi *et al.*, 2007; Gentekaki and Lynn, 2009; Lin *et al.*, 2009). Comparisons of these divergence estimates strongly support the occurrence of two *Oxyrrhis* species.

Oxyrrhis marina is more than one species

Based on the molecular evidence detailed above, we propose two *Oxyrrhis* species: *O. marina* and *O. maritima* (see diagnoses below). Following recommendations by Foissner *et*

Lowe *et al.* 2. *Oxyrrhis marina* taxonomy-phylogeny

al. (2002), we have adopted the use of previously employed species names; thus we resurrect the synonymised specific epithet *O. maritima* to denote the second *Oxyrrhis* species.

A third species, *O. tentaculifera*, may also occur. As noted, in our opinion the description of *O. tentaculifera* (Conrad, 1939) is sufficiently distinct to stand as a separate species – though contemporary observations and DNA sequence data for this species are clearly required to support its existence and assess its precise relationship to the two other *Oxyrrhis* species. For completeness, and to highlight this species as a subject for future study, a diagnosis of *O. tentaculifera* is included below.

Amended Diagnoses

Diagnosis of Oxyrrhis

Cell subovoidal, asymmetrical posteriorly; girdle postmedial, not extending to dorsal surface; sulcus spreading posteroventrally; flagella midventral; tentacular lobe occurs between two flagella, dividing the broad undeveloped ventral sulcus; brackish to marine; generally intertidal but occasionally open water.

Diagnosis of Oxyrrhis marina Dujardin, 1841

Length, 20-30 μm , but occasionally twice this size; appears colourless but with pink pigmentation that is apparent in concentrated cultures; tentacular lobe never extends beyond cell posterior; for mitochondrial cytochrome c oxidase I > 97% identity to accession number FJ853710 (Strain CCMP604).

Diagnosis of Oxyrrhis maritima van Meel, 1969

Length, 20-30 μm , but occasionally twice this size; appears colourless but with pink pigmentation that is apparent in concentrated cultures; tentacular lobe never extends beyond cell posterior; brackish to marine; for mitochondrial cytochrome c oxidase I > 97% identity to accession number FJ853706 (strain CCAP1133/5).

Lowe *et al.* 2. *Oxyrrhis marina* taxonomy-phylogeny

Diagnosis of Oxyrrhis tentaculifera Conrad, 1939

Length, 16-24 µm; cell ~ 2 times as long as wide; compressed dorso-ventrally; tentacular lobe extends beyond cell posterior, used for prey capture and at times adhesion to surfaces; cell colourless. Type location: brackish marsh, Belgium (51° 17' N, 3° 12' E).

Reasoning for diagnosis of three species of *Oxyrrhis*

High levels of cryptic genetic diversity are now documented for many free-living protist taxa. Such variety raises important questions – is extensive genetic variation paralleled by functional diversity, and does this need to be accounted for in evaluations of physiological responses and ecological interactions? Clearly, the use of experimentally tractable model organisms, such as *O. marina*, is an important strategy to address these questions. However, failure to recognise the sources and extent of cryptic variation in these organisms is problematic.

For *Oxyrrhis*, the designation of two species highlights for future studies that: 1) a more cautious approach must be taken in selecting and characterising *Oxyrrhis* isolates for experimental study (i.e. it is inappropriate to report assessments concerning poorly characterised isolates) and 2) comparative studies of multiple isolates are required to assess individual, population, and species level variation in the *Oxyrrhis* genus. Such recommendations are clearly relevant to all protist species and it should now be exceptionally clear that new species designations should include morphological and genetic data, and where possible examination of multiple isolates to assess variability.

Our reasoning for the designation of lineage *i* and lineage *ii* (Fig. 6, Table 3; Lowe *et al.*, 2010) as *O. marina*, and *O. maritima*, respectively, follows (Table 3). As indicated above, there are no morphological data to tie the proposed molecular-based species to the original description of *O. marina*, nor does type location (i.e. coastal Mediterranean, France)

Lowe *et al.* 2. *Oxyrrhis marina* taxonomy-phylogeny

1
2
3 provide a criterion to assign species names (as representatives from all clades occur in the
4 French Mediterranean; Lowe *et al.*, 2010; Lowe, unpublished data). The original description
5 of *O. maritima* as larger and rounder than *O. marina* offers a potential distinguishing
6 morphological characteristic; however, our observations to date (unpublished) do not suggest
7 a difference in cell size between *Oxyrrhis* lineages. Furthermore, the small amount of work
8 that recognises ecophysiological differences between isolates (Lowe *et al.*, 2005) offers no
9 guidance on defining “ecotypes”. Therefore, we have chosen to designate species based on
10 the least disruptive classification, using occupied names of junior synonyms. In this respect,
11 there are a range of criteria that suggest that *O. marina* should be represented by lineage *i* - it
12 is the most prevalent, has the widest distribution, and has the highest number of confirmed
13 isolates, and therefore changing its name would be most disruptive (Table 3) - the overriding
14 reason, however, is simple: there are only two well-studied (Lowe *et al.*, 2010) isolates of
15 *Oxyrrhis* that are available from commercial culture collections in lineage *ii*, while there are
16 six, well-studied, commercially available isolates in lineage *i*. Thus, by assigning the specific
17 epithet *maritima* to lineage *ii*, we minimise the need to reassign names to past work and
18 minimise future confusion.

41 **Recommendations for future studies**

42
43 Our recommendations for species designation are based on phylogenetic data only. Clearly
44 then, there is scope to re-visit, in a comparative context, many morphological studies
45 conducted on single *O. marina* isolates to better define the extent of diversification within the
46 genus. We suggest that studies of flagellar scales, tentacular structure and size, cyst
47 formation, and potentially flagellar rootlet structure will be fruitful directions for such work.
48 In addition, the recognition of several species in the genus provides further avenues of
49 research for which these model organisms may be applied. For example, as a novel
50 intermediate taxon at the base of the dinoflagellate lineage, *Oxyrrhis* is increasingly a target
51
52
53
54
55
56
57
58
59
60

1
2
3
4
5
6
7
8
9
10
11
12
13
14
15
16
17
18
19
20
21
22
23
24
25
26
27
28
29
30
31
32
33
34
35
36
37
38
39
40
41
42
43
44
45
46
47
48
49
50
51
52
53
54
55
56
57
58
59
60

Lowe *et al.* 2. *Oxyrrhis marina* taxonomy-phylogeny

for the study of evolutionary patterns and genome organisation within the alveolates. The occurrence of distinct species within the *Oxyrrhis* genus represents a useful pool of variation to study processes that occurred during the evolution of the dinoflagellates and the development of derived '*Oxyrrhis*' characteristics. Finally, in a broader context, our understanding of the ecological and evolutionary processes that drive patterns of diversity and speciation in free-living protists as a whole remains poor. Model protists such as *O. marina* and *O. maritima* for which we are beginning to recognise and characterise an extensive pool of variation present ideal opportunities to unravel these fundamental processes.

ACKNOWLEDGEMENTS

The Authors would like to thank Emily Roberts, Michael Steinke, and Naoji Yubuki for constructive comments on the manuscript. We would also like to thank two anonymous reviewers for their suggestions.

FUNDING

This work was, in part, supported by a UK NERC grant (NE/F005237/1) awarded to PCW, CDL, and DJSM.

Lowe *et al.* 2. *Oxyrrhis marina* taxonomy-phylogeny

REFERENCES

- Brown, D. L., Cachon, J., Cachon, M. *et al.* (1988) The cytoskeletal microtubular system of some naked dinoflagellates. *Cell Motil. Cytoskel.*, **9**, 361-374.
- Cachon, J., Cachon, M. and Salvano, P. (1979) The nuclear division in *Oxyrrhis marina*: an example of the role played by the nuclear envelope in chromosome segregation. *Arch. Protistenkd.*, **122**, 43-54.
- Cachon, M., Cosson, J., Cosson, M. *et al.* (1988) Ultrastructure of the flagellar apparatus of *Oxyrrhis marina*. *Biol. Cell.*, **63**, 159-168.
- Cachon, J., Cachon, M., Greuet, C. *et al.* (1994) Nanofilament dependent motility in dinoflagellates. *Biol. Cell.*, **81**, 1-10.
- Cavalier-Smith, T. and Chao, E. E. (2004) Protalveolate phylogeny and systematics and the origins of Sporozoa and dinoflagellates (phylum Myzozoa nom. nov.). *Eur. J. Protistol.*, **40**, 185-212.
- Chantangsi, C., Lynn, D. H., Brandl, M. T. *et al.* (2007) Barcoding ciliates: a comprehensive study of 75 isolates of the genus *Tetrahymena*. *Int. J. Syst. Evol. Micr.*, **57**, 2412-2425.
- Clarke, K. J. and Pennick, N. C. (1972) Flagellar scales in *Oxyrrhis marina* Dujardin. *Brit. Phycol. J.*, **7**, 357-360.
- Clarke, K. J. and Pennick, N. C. (1976) Occurrence of body scales in *Oxyrrhis marina* Dujardin. *Brit. Phycol. J.*, **11**, 345-348.
- Conrad, W. (1939) Notes protistologiques IX sur trois dinoflagellates de l'eau saumatre. *Bull. Mus. Roy. Hist. Nat. Belg.*, **15**, 1-10.
- Cosson, J., Cachon, M., Cachon, J., Cosson, M. P. (1988a) Swimming behavior of the unicellular biflagellate *Oxyrrhis marina* – *in vivo* and *in vitro* movement of the 2 flagella. *Biol. Cell.*, **63**: 117-126.

1
2
3
4
5
6
7
8
9
10
11
12
13
14
15
16
17
18
19
20
21
22
23
24
25
26
27
28
29
30
31
32
33
34
35
36
37
38
39
40
41
42
43
44
45
46
47
48
49
50
51
52
53
54
55
56
57
58
59
60

Lowe *et al.* 2. *Oxyrrhis marina* taxonomy-phylogeny

Cosson, J., Cachon, M., Cachon, J., Huitorel, P., Cosson, M. P. (1988b) The 2 flagella of

Oxyrrhis marina differ in structure and function. *Cell Motility Cytoskeleton*, **11**: 213-213.

Darling, K. F., Kucera, M., Pudsey, C. J. *et al.* (2004) Molecular evidence links cryptic

diversification in polar planktonic protists to quaternary climate dynamics. *Proc. Natl. Acad. Sci. USA.*, **101**, 7657-7662.

Diskus, A. (1956) Osmoseverhalten Und Permeabilitat Der Gymnodiniale *Oxyrrhis marina*.

Protoplasma, **46**, 160-169.

Dodge, J. D. and Crawford, R. M. (1971a) Fine structure of the dinoflagellate *Oxyrrhis*

marina Part 1 The general structure of the cell. *Protistologica*, **7**, 295-304.

Dodge, J. D. and Crawford, R. M. (1971b) Fine structure of the dinoflagellate *Oxyrrhis*

marina Part 2 The flagellar system. *Protistologica*, **7**, 399-409.

Dodge, J. D. (1982) Marine Dinoflagellates of the British Isles. Her Majesty's Stationary

Office, London.

Dujardin, F. (1841) Histoire naturelle des zoophytes. Infusoires, comprenant la physiologie et

la classificatin de ces animaux, et la manière de les étudier à l'aide du microscope.

Roret, Paris.

Elbrächter, M., Schnepf, E. and Balzer, I. (1996) *Hemistasia phaeocysticola* (Scherffel)

comb. nov., redescription of a free-living, marine, phagotrophic kinetoplastid flagellate.

Arch. Protistenkd., **147**: 125-136.

Evans, K. M., Kuhn, S. F., Hayes, P. K. (2005) High levels of genetic diversity and low

levels of genetic differentiation in North Sea *Pseudo-nitzschia pungens*

(Bacillariophyceae) populations. *J. Phycol.*, **41**: 506–514.

1 Lowe *et al.* 2. *Oxyrrhis marina* taxonomy-phylogeny

2
3 Foissner, W., Agatha, S., Berger, H. (2002) Soil ciliates (Protozoa, Ciliophora) from Namibia
4
5 (Southwest Africa), with emphasis on two contrasting environments, the Etosha
6
7 region and the Namib Desert, *Denisia* **5**: 1–1459.

8
9
10 Frezal, L. and Leblois, R. (2008) Four years of DNA barcoding: Current advances and
11
12 prospects. *Infect. Genet. Evol.*, **8**: 727-736.

13
14
15 Gao, X. P. and Li, J. Y. (1986) Nuclear division in the marine dinoflagellate *Oxyrrhis*
16
17 *marina*. *J. Cell. Sci.*, **85**, 161-175.

18
19
20 Gentekaki, E. and Lynn, D. H. (2009) High-Level genetic diversity but no population
21
22 structure inferred from nuclear and mitochondrial markers of the peritrichous ciliate
23
24 *Carchesium polypinum* in the Grand River Basin (North America). *Appl. Environ.*
25
26 *Microb.*, **75**, 3187-3195.

27
28
29 Godart, H. and Huitorel, P. (1992) Effects of calcium on the longitudinal flagellum of
30
31 *Oxyrrhis marina*. *Biol. Cell.*, **76**: 365-372.

32
33
34 Godart, H., Huitorel, P., Cosson, J. *et al.* (1992) Molecular composition and properties of the
35
36 nanofilaments in the paraflagellar rod of the dinoflagellate *Oxyrrhis marina*. *Cell Motil.*
37
38 *Cytoskel.*, **23**, 310.

39
40
41 Hall, R. P. (1924) Binary fission in *Oxyrrhis marina* Dujardin. *Univ. Calif. Publ. Zool.*, **26**,
42
43 281-324.

44
45
46 Hausmann, K. (1973) Cytological studies on trichocysts .6. fine structure and mode of
47
48 function of trichocysts in the flagellate *Oxyrrhis marina* and ciliate *Pleuronema*
49
50 *marinum*. *Helgolander Wissenschaftliche Meeresuntersuchungen*, **25**: 39-62.

51
52
53 Hausmann, K., Hülsmann N. and Radek, R. (2003) Protistology. 3rd Ed. E.
54
55 Schweizerbart'sche Verlagsbuchhandlung. Berlin.

56
57
58 Hebert, P. D. N., Cywinska, A., Ball, S. L. *et al.* (2003) Biological identifications through
59
60 DNA barcodes. *P. Roy. Soc. Lond. B Bio.*, **270**, 313-321.

1
2
3
4
5
6
7
8
9
10
11
12
13
14
15
16
17
18
19
20
21
22
23
24
25
26
27
28
29
30
31
32
33
34
35
36
37
38
39
40
41
42
43
44
45
46
47
48
49
50
51
52
53
54
55
56
57
58
59
60

Lowe *et al.* 2. *Oxyrrhis marina* taxonomy-phylogeny

Hohfeld, I., Beech, P. L., Melkonian, M. (1994) Immunolocalization of centrin in *Oxyrrhis marina* (Dinophyceae). *J. Phycol.*, **30**: 474-489.

Hohfeld, I. and Melkonian, M. (1998) Lifting the curtain? The microtubular cytoskeleton of *Oxyrrhis marina* (dinophyceae) and its rearrangement during phagocytosis. *Protist*, **149**: 75-88.

Jonsson, P. R. (1994) Tidal rhythm of cyst formation in the rock pool ciliate *Strombidium oculatum* Gruber (Cilophora, Oligotrichida): a description of the functional biology and analysis of the tidal synchronization of encystment. *J. Exp. Mar. Biol. Ecol.*, **175**, 77-103.

Kato, K. H., Moriyama, A., Huitorel, P. *et al.* (1997) Isolation of the major basic nuclear protein and its localization on chromosomes of the dinoflagellate, *Oxyrrhis marina*. *Biol. Cell*, **89**, 43-52.

Kato, K. H., Moriyama, A., Itoh, T. J. *et al.* (2000) Dynamic changes in microtubule organization during division of the primitive dinoflagellate *Oxyrrhis marina*. *Biol. Cell*, **92**, 583-594.

Kimmance, S. A., Atkinson, D. and Montagnes, D. J. S. (2006) Do temperature-food interactions matter? Responses of production and its components in the model heterotrophic flagellate *Oxyrrhis marina*. *Aquat. Microb. Ecol.*, **42**, 63-73.

Kofoed, C. A. and Swezy, O. (1921) The free-living unarmored dinoflagellata. University of California Press, Berkeley, California.

Leander, B. S. and P. J. Keeling (2004). Early evolutionary history of dinoflagellates and apicomplexans (Alveolata) as inferred from hsp90 and actin phylogenies. *J. Phycol.*, **40**, 341-350.

1
2
3
4
5
6
7
8
9
10
11
12
13
14
15
16
17
18
19
20
21
22
23
24
25
26
27
28
29
30
31
32
33
34
35
36
37
38
39
40
41
42
43
44
45
46
47
48
49
50
51
52
53
54
55
56
57
58
59
60

Lowe *et al.* 2. *Oxyrrhis marina* taxonomy-phylogeny

Lenaers, G., Scholin, C., Bhaud, Y. *et al.* (1991) A molecular phylogeny of dinoflagellate protists (Pyrrhophyta) inferred from the sequence of 24S ribosomal-RNA divergent domain-D1 and domain-D8. *J. Mol. Evol.*, **32**, 53-63.

Lin, S. J., Zhang, H., Hou, Y. B. *et al.* (2009) High-level diversity of dinoflagellates in the natural environment, revealed by assessment of mitochondrial *cox1* and *cob* genes for dinoflagellate DNA barcoding. *Appl. Environ. Microb.*, **75**, 4230-4230.

Loeblich, A. R. (1984) Dinoflagellate evolution. In Spector, D. L. (ed), *Dinoflagellates*. Academic Press, New York.

Lowe, C. D., Day, A., Kemp, S. J. *et al.* (2005) There are high levels of functional and genetic diversity in *Oxyrrhis marina*. *J. Eukaryot. Microbiol.*, **52**, 250-257.

Lowe, C. D., Montagnes, D. J. S., Martin, L. E. *et al.* (2010). Patterns of genetic diversity in the marine heterotrophic flagellate *Oxyrrhis marina* (Alveolata: Dinophyceae). *Protist*. **161**, 212-221.

Lowe, C.D., Martin, L.E., Watts, P.C. *et al.* (this issue -a) 3. Collection, isolation, and culturing strategies for the maintenance of *Oxyrrhis marina*. *J. Plankton Res.* **xx**, xx-xx.

Montagnes, D. J. S. Lowe, D. D., Roberts, E. C. *et al.* (this issue-a). An introduction to the special issue: *Oxyrrhis marina*, a model organism? *J. Plankton Res.*, **xx**, xx-xx.

Montagnes, D. J. S., Lowe, C. D., Martin, L. E. *et al.* (this issue-b). *Oxyrrhis marina* growth, sex, and reproduction. *J. Plankton Res.*, **xx**, xx-xx.

Pfiester, L. A. and Anderson, D. M. (1987) Dinoflagellate reproduction. In: *The biology of dinoflagellates*. Ed. by F. J. R. Taylor. Blackwell, Oxford.

Roberts, K. R. (1985) The flagellar apparatus of *Oxyrrhis marina* (Pyrrhophyta). *J. Phycol.*, **21**, 641-655.

Roberts, K. R. and Roberts, J. E. (1991) The flagellar apparatus and cytoskeleton of the dinoflagellates - a comparative overview. *Protoplasma*, **164**, 105-122.

1
2
3
4
5
6
7
8
9
10
11
12
13
14
15
16
17
18
19
20
21
22
23
24
25
26
27
28
29
30
31
32
33
34
35
36
37
38
39
40
41
42
43
44
45
46
47
48
49
50
51
52
53
54
55
56
57
58
59
60

Lowe *et al.* 2. *Oxyrrhis marina* taxonomy-phylogeny

Roberts, K. R., Rusche, M. L. and Taylor, F. J. R. (1993) The cortical microtubular cytoskeleton of *Oxyrrhis marina* (Dinophyceae) observed with immunofluorescence and electron-microscopy. *J. Phycol.*, **29**, 642-649.

Saldarriaga, F., McEwan, M. L., Fast, N. M. *et al.* (2003) Multiple protein phylogenies show that *Oxyrrhis marina* and *Perkinsus marinus* are early branches of the dinoflagellate lineage. *International Journal of Systematic and Evolutionary Microbiology*, **53**, 355-365

Saldarriaga, J. F., Taylor, F. J. R., Cavalier-Smith, T., Menden-Deuer, S., Keeling, P. J. (2004) Molecular data and the evolutionary history of dinoflagellates. *Eur. J. Protistol.*, **40**: 85-111.

Saville-Kent, W. (1880) A manual of the infusoria, including a description of all known flagellate, ciliate, and tentaculiferous protozoa, British and foreign and an account of the organization and affinities of the sponges. David Bogue, London.

Scherffel, A. (1900) *Phaeocystis globosa* nov. spec., einigen Beti-achtungen iiber die Phylogenie niederer, insbesondere brauner Organismen. *Wiss. Meeresunters., Abt. Helgoland*, **4**, 1-29.

Senn, G. (1911) *Oxyrrhis*, *Nephroselmis* und einige Euflagellaten, nebst Bemerkungen uiber deren System. *Z. Wiss. Zool. Abt. A.*, 604-672.

Sites, J. W. and Marshall, J. C. (2003) Delimiting species: a Renaissance issue in systematic biology. *Trends Ecol. Evol.*, **18**, 462-470.

Slamovits, C. H. and Keeling, P. J. (this issue). Contributions of *Oxyrrhis marina* to molecular biology, genomics and organelle evolution of alveolates. *J. Plankton Res.*, **xx**, xx-xx.

Slamovits, C. H., Saldarriaga, J. F., Larocque, A. *et al.* (2007) The highly reduced and fragmented mitochondrial genome of the early-branching dinoflagellate *Oxyrrhis*

1 Lowe *et al.* 2. *Oxyrrhis marina* taxonomy-phylogeny

2
3 *marina* shares characteristics with both apicomplexan and dinoflagellate mitochondrial
4 genomes. *J. Mol. Biol.*, **372**, 356-368.
5
6

7
8 Slapeta, J., Moreira, D. and Lopez-Garcia, P. (2005) The extent of protist diversity: insights
9 from molecular ecology of freshwater eukaryotes. *P. Roy. Soc. Lond. B Bio.*, **272**, 2073-
10 2081.
11
12

13
14
15 Taylor, F. J. R. (1980) On dinoflagellate evolution. *Biosystems*. **13**, 65-108.
16

17 Triemer, R. E. (1982) A unique mitotic variation in the marine dinoflagellate *Oxyrrhis*
18 *marina* (Pyrrophyta). *J. Phycol.*, **18**, 399-411.
19
20

21
22 Van Meel, L. (1969) Etudes hydrobiologique sur les eaux saumâtres en Belgique 10 especes
23 de Protists rare ou nouvelle pour la cote Belge. *Bull. Inst. Roy. Sci. Nat. Belg.*, **45**, 1-
24 18.
25
26
27

28
29 Watts, P. C., Martin L. E., Montagnes, D. J. S., *et al.* (this issue). The distribution of *Oxyrrhis*
30 *marina* - a global wanderer or poorly characterised endemic? *J. Plankton Res.*, **xx**, xx-
31 xx.
32
33
34
35

36 Zhang, H., Hou, Y. B., Miranda, L. *et al.* (2007). Spliced leader RNA trans-splicing in
37 dinoflagellates. *Proc. Natl. Acad. Sci. USA.*, **104**, 4618-4623.
38
39

40 Zhang, H. and Lin, S. (2008) mRNA editing and spliced-leader RNA trans-splicing groups
41 *Oxyrrhis*, *Noctiluca*, *Heterocapsa*, and *Amphidinium* as basal lineages of
42 dinoflagellates. *J. Phycol.*, **44**, 703-711.
43
44
45
46
47

48 Zingmark, R. G. (1970) Sexual reproduction in the dinoflagellate *Noctiluca miliaris* Suriray.
49 *J. Phycol.*, **6**, 122-126.
50
51
52
53
54
55
56
57
58
59
60

Lowe *et al.* 2. *Oxyrrhis marina* taxonomy-phylogeny

FIGURE LEGENDS

Fig. 1. A summary of *Oxyrrhis marina* strains reported in the literature between 1950 and 2009: a. number of citations for the 38 named strains occurring in the literature, numbers above bars indicate, where known, to which clade a strain belongs (see Lowe *et al.* 2010, and Fig.6); b. 'Oxyrrhis related output' (i.e. papers reporting observations/experiments concerning *O. marina*) and strain usage of the 33 laboratories/research groups reporting studies of *O. marina*.

Fig. 2. Illustrations of *Oxyrrhis marina* over the last 160 years: a. the original description (Dujardin, 1841); b. eight drawings by Saville Kent, including variation in size and division (1880); c. four of many illustrations by Senn (1911); d. two illustrations from many provided by Hall (1925); e. four illustrations, indicating osmotic influence on cell size, by Diskus, (1955); f. an illustration from a guide to protozoa of Woods Hole (Calkins 1902); g. the two general illustrations presented in Dodge and Crawford (1972a); h. a simple schematic presented in Roberts (1985); i. a schematic, indicating ultrastructure and microtubules (Brown *et al.*, 1988); j. our own general illustration. All illustrations presented to be associated with the scale bar.

Fig. 3. Illustrations of the other three species described in the genus *Oxyrrhis*: a. *O. phaeocysticola* Scherffel, 1900, moved to *Hemistasia phaeocystidicola* (Scherffel) comb. nov. (Elbrächter *et al.*, 1996); b. *O. maritima* van Meel, 1969; c. *O. tentaculifera* Conrad, 1939. Scale bar applies to all illustrations.

Fig. 4. Illustrations to indicate the extent and position of scales and mastigonemes on *O. marina*: a. a silhouette of a cell, indicating a widening of the flagella caused by scales

Lowe *et al.* 2. *Oxyrrhis marina* taxonomy-phylogeny

(redrawn from Clark and Pennick, 1972); b. and c. indications of the position and size of scales and mastigonemes on the transverse (b) and longitudinal (c) flagella (modified from illustrations, micrographs, and descriptions in Clark and Pennick, 1972, 1976); d. a scale (modified from Clarke and Pennick, 1976). The scale bar is associated with b and c, only. For the size of cells and scales see the text.

Fig. 5. Schematic illustrations of a. *Oxyrrhis marina* and b. a generalised athecate dinoflagellates indicating: the epicone (e), the hypocone (h) the tentacle (ventral bulge), the cingulum (c), and the sulcus (s).

Fig. 6. Cladogram (redrawn from Lowe *et al.*, 2010) of the four *Oxyrrhis* clades defined based on 5.8S ITS rDNA and mitochondrial COI sequence data. Representations of the 4 clades are scaled according to the number of isolates known to belong to each clade. Indicated are the proposed species names for the two *Oxyrrhis* lineages and the most commonly used *Oxyrrhis* strains for which affiliations are known (CCAP and CCMP indicate the source culture collection: CCAP—Culture Collection of Algae and Protozoa, Dunstaffnage, UK; CCMP – Provasoli – Guillard National Center for Culture of Marine Phytoplankton, West Boothbay Harbour, ME, USA).

Lowe *et al.* 2. *Oxyrrhis marina* taxonomy-phylogeny

Table 1. A summary of studies (post 1950) providing morphological, cytological, ultrastructural, or molecular phylogenetic data concerning *Oxyrrhis marina*. The *O. marina* strain/isolate identity and the number of strains/isolates examined in each study are also noted.

| Study | Strain/Isolate | Number of strains | |
|----------------------------------|---|---|----|
| Phylogeny/genetic | | | |
| Lenaers <i>et al.</i> (1991) | Dinoflagellate phylogeny | Villefranche-sur-Mer (France) | 1 |
| Saldarriaga <i>et al.</i> (2003) | <i>O. marina</i> and <i>Perkinsus marinus</i> are early branches of the dinoflagellates | CCCM534, NIES494 | 2 |
| Cavalier-Smith and Chao (2004) | Protalveolate phylogeny and systematics | WHOI LI1-5/LI1-6, NIES494, Chinese strain | 3 |
| Leander and Keeling (2004) | Early evolutionary history of dinoflagellates and apicomplexans | CCCM534 | 1 |
| Saldarriaga <i>et al.</i> (2004) | Evolutionary history of dinoflagellates | N/A (review article) | - |
| Lowe <i>et al.</i> (2005) | Intraspecific diversity of <i>O. marina</i> | IOM/PSM, S, P; CCMP1795, 604, 1739, 1788, 605; CCAP1133/3, 4, 5 | 11 |
| Slamovits <i>et al.</i> (2007) | Characterisation of the mitochondrial genome of <i>O. marina</i> | CCMP1788 | 1 |
| Slamovits and Keeling (2008) | Plastid-derived genes in <i>O. marina</i> | CCMP1788 | 1 |
| Zhang and Lin (2008) | mRNA editing and spliced-leader RNA trans-splicing groups <i>Oxyrrhis</i> , <i>Noctiluca</i> , <i>Heterocapsa</i> , and <i>Amphidinium</i> as basal lineages of dinoflagellates | CCMP1795 | 1 |
| Morphology/Cytology | | | |
| Hausmann (1973) | Structure and mode of function of trichocysts | Not stated | - |
| Clarke and Pennick (1972) | Occurrence of flagellar scales | CCAP1133/1, 2 | 2 |
| Clarke and Pennick (1976) | Occurrence of body scales | CCAP1133/2, Gorleston-on-Sea (UK), CCAP1133/4 | 3 |
| Brown <i>et al.</i> (1988) | Cytoskeletal microtubular system | Not stated | - |
| Roberts <i>et al.</i> (1993) | Cortical microtubular cytoskeleton | CCCM 534 | 1 |
| Hohfeld and Melkonian (1998) | The microtubular cytoskeleton | UTEX LB 1974 | 1 |
| Hohfeld <i>et al.</i> (1994) | Immunolocalization of centrin | UTEX LB 1974 | 1 |
| Kato <i>et al.</i> (2000) | microtubule organization during division | Villefranche-sur-Mer (France) | 1 |
| Nuclear structure | | | |

| | | | | |
|----|---|--|---|---|
| 1 | Lowe <i>et al.</i> 2. <i>Oxyrrhis marina</i> taxonomy-phylogeny | | | |
| 2 | Cachon <i>et al.</i> (1979) | Nuclear division | Villefranche-sur-Mer (France) | 1 |
| 3 | Triemer (1982) | A unique mitotic variation in <i>O. marina</i> | Tuckerton, New Jersey (US) | 1 |
| 4 | Gao and Li (1986) | Nuclear division in <i>O. marina</i> | Qingdao (China) | 1 |
| 5 | Kato <i>et al.</i> (1997) | Major basic nuclear protein and its localization on chromosomes of <i>O. marina</i> . | Villefranche-sur-Mer (France) | 1 |
| 6 | <hr/> | | | |
| 7 | Flagellar structure | | | |
| 8 | Roberts (1985) | Flagellar apparatus | Newport, Rhode Island (US); UTEX LB1974 | 2 |
| 9 | | | | |
| 10 | Cachon <i>et al.</i> (1988b) | Ultrastructure of the flagellar apparatus | Villefranche-sur-Mer (France) | 1 |
| 11 | Cosson <i>et al.</i> (1988a) | Swimming behaviour of <i>O. marina</i> | Villefranche-sur-Mer (France) | 1 |
| 12 | | | | |
| 13 | Cosson <i>et al.</i> (1988) | Structure and function of the flagella | Villefranche-sur-Mer (France) | 1 |
| 14 | Godart and Huitorel (1992) | Effects of calcium on the longitudinal flagellum | Villefranche-sur-Mer (France) | 1 |
| 15 | | | | |
| 16 | Godart <i>et al.</i> (1992) | Composition/properties of the nanofilaments in the paraflagellar rod of <i>O. marina</i> | Villefranche-sur-Mer (France) | 1 |
| 17 | | | | |
| 18 | Cachon <i>et al.</i> (1994) | Nanofilament dependent motility in dinoflagellates | Not stated | - |
| 19 | | | | |
| 20 | | | | |
| 21 | | | | |
| 22 | | | | |
| 23 | | | | |
| 24 | | | | |
| 25 | | | | |
| 26 | | | | |
| 27 | | | | |
| 28 | | | | |
| 29 | | | | |
| 30 | | | | |
| 31 | | | | |
| 32 | | | | |
| 33 | | | | |
| 34 | | | | |
| 35 | | | | |
| 36 | | | | |
| 37 | | | | |
| 38 | | | | |
| 39 | | | | |
| 40 | | | | |
| 41 | | | | |
| 42 | | | | |
| 43 | | | | |
| 44 | | | | |
| 45 | | | | |
| 46 | | | | |
| 47 | | | | |

Lowe *et al.* 2. *Oxyrrhis marina* taxonomy-phylogeny

Table 2. The designations, and naming authorities, for species in the genus *Oxyrrhis*.

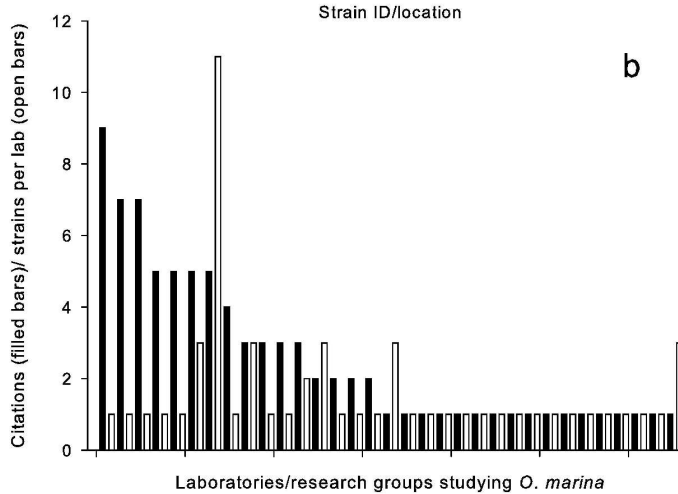
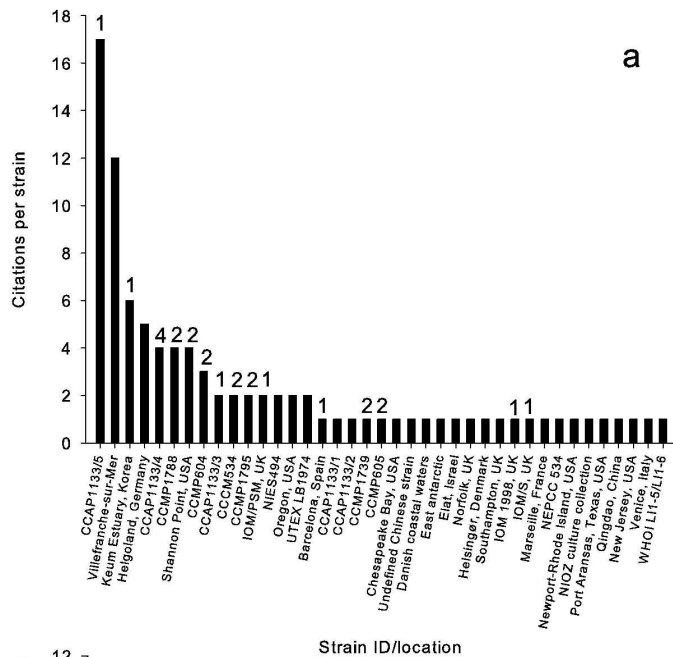
| <i>Oxyrrhis</i> | Date | Length (μm) | Flagella | Shape | Location |
|--------------------------------|------|-----------------------------|----------|---|--------------------|
| <i>marina</i> Dujardin | 1841 | 44* | several | Oblong, oval bodied, rounded posteriorly | Mediterranean |
| <i>marina</i> Kent | 1880 | 28-51 | 2 | Body conical, subcylindrical, rounded posteriorly | St Helier, Jersey |
| <i>phaeocysticola</i> | 1900 | 20 | 2 | Rounded posterior, pointed anterior, excavated oral region with trunk-like projection | Helgoland, Germany |
| <i>tentaculifera</i> Conrad | 1939 | 38 | 2 | More voluminous than <i>O. marina</i> | Belgium |
| <i>maritima</i> Van Meel | 1969 | 16-24 | 2 | Twice as long as wide; has a tentacle | Belgium |

* No units were provided in the original description – value is inferred by the authors

Lowe *et al.* 2. *Oxyrrhis marina* taxonomy-phylogeny

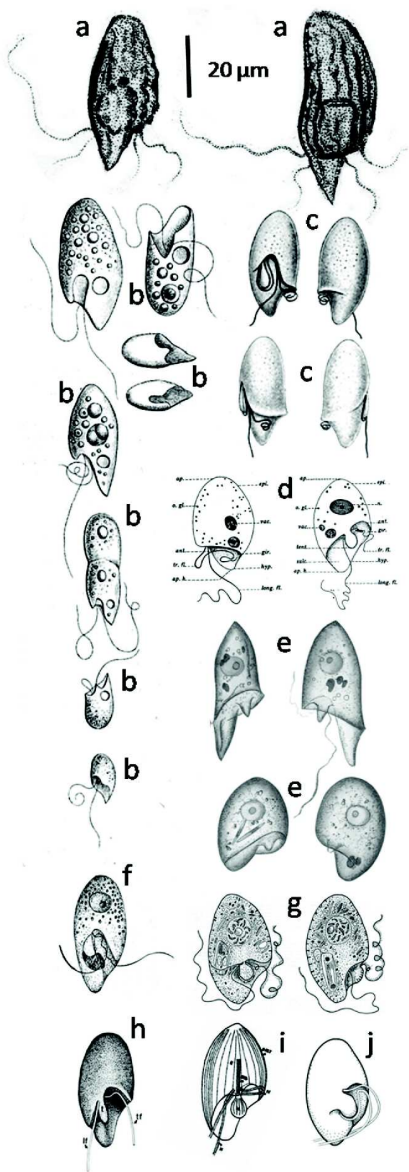
Table 3. Criteria for the re-designation of species names in the genus *Oxyrrhis*.

| Criteria for species assignment to <i>Oxyrrhis</i> lineages | Lineage <i>i</i> | Lineage <i>ii</i> | Citation |
|--|------------------|-------------------|---------------------------------------|
| Environmental prevalence (i.e. occurrence in the ~150 samples that have been collected by us, to date) | 83 | 17 | unpublished data |
| Global breadth of distribution | broad | narrow | Watts <i>et al.</i> (this issue) |
| History of study (years), based on isolation date of commercial cultures | <20 | >50 | This study |
| Citations for the single most studied strain in each lineage | 6 | 17 | This study (Fig. 1a) |
| Citations for all stains within each lineage | 25 | 21 | This study (Fig. 1a) |
| Number of confirmed isolates within each lineage | 52 | 5 | This study, Lowe <i>et al.</i> (2010) |
| Species designation | <i>marina</i> | <i>maritima</i> | |

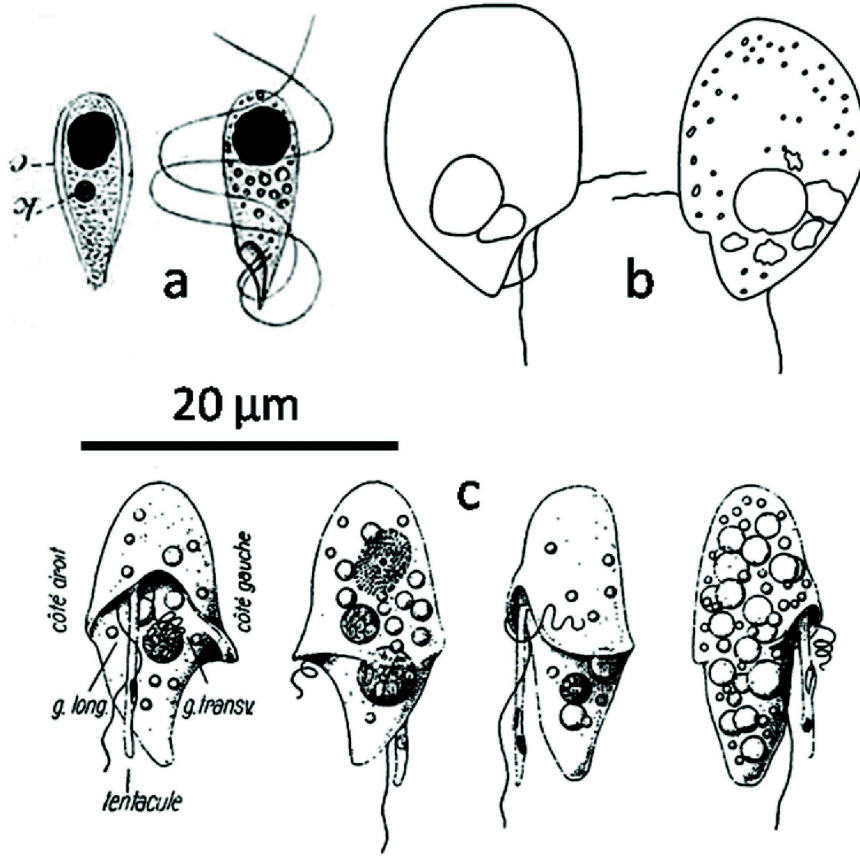


109x181mm (600 x 600 DPI)

1
2
3
4
5
6
7
8
9
10
11
12
13
14
15
16
17
18
19
20
21
22
23
24
25
26
27
28
29
30
31
32
33
34
35
36
37
38
39
40
41
42
43
44
45
46
47
48
49
50
51
52
53
54
55
56
57
58
59
60

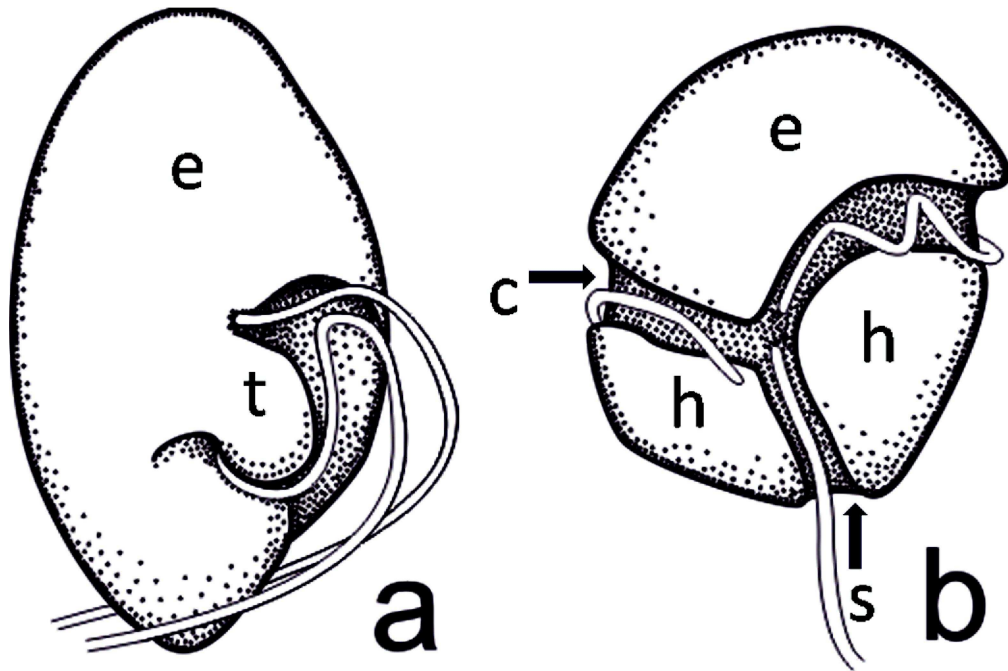


84x246mm (600 x 600 DPI)



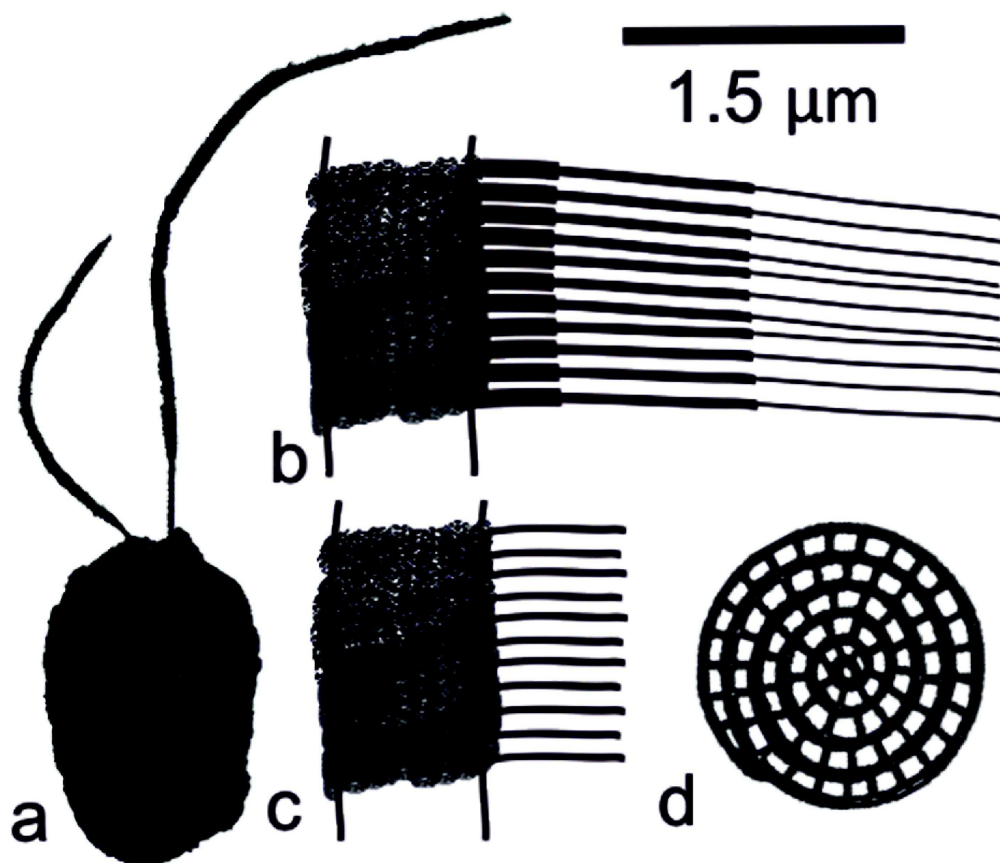
110x109mm (600 x 600 DPI)

1
2
3
4
5
6
7
8
9
10
11
12
13
14
15
16
17
18
19
20
21
22
23
24
25
26
27
28
29
30
31
32
33
34
35
36
37
38
39
40
41
42
43
44
45
46
47
48
49
50
51
52
53
54
55
56
57
58
59
60



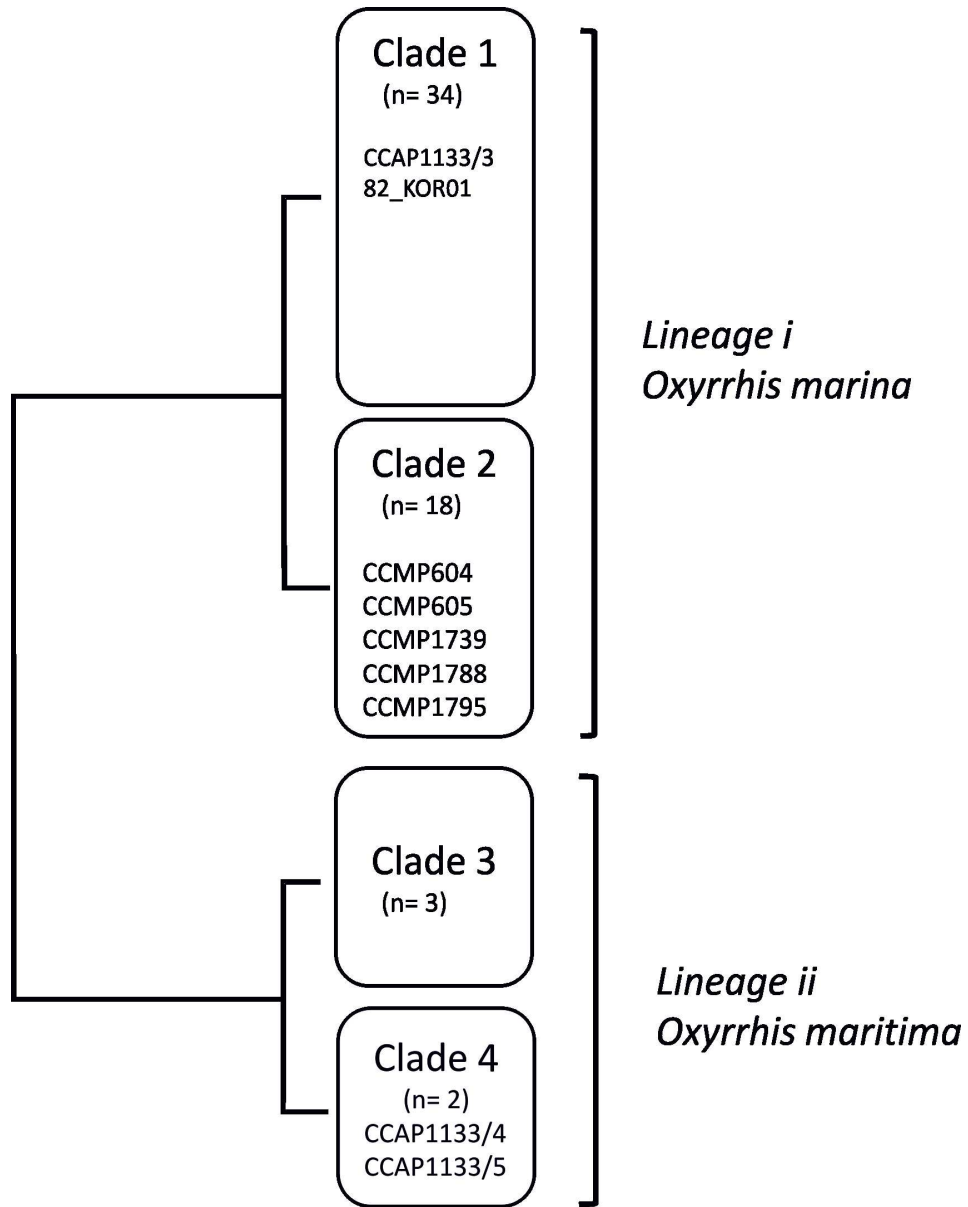
131x87mm (600 x 600 DPI)

Review



118x101mm (600 x 600 DPI)

1
2
3
4
5
6
7
8
9
10
11
12
13
14
15
16
17
18
19
20
21
22
23
24
25
26
27
28
29
30
31
32
33
34
35
36
37
38
39
40
41
42
43
44
45
46
47
48
49
50
51
52
53
54
55
56
57
58
59
60



144x182mm (300 x 300 DPI)