



**HAL**  
open science

## **International distribution and age estimation of the Portuguese c.156\_157insAlu founder mutation**

Ana Peixoto, Catarina Santos, Manuela Pinheiro, Pedro Pinto, Maria José Soares, Patrícia Rocha, Leonor Gusmão, António Amorim, Annemarie Hout, Anne-Marie Gerdes, et al.

### ► **To cite this version:**

Ana Peixoto, Catarina Santos, Manuela Pinheiro, Pedro Pinto, Maria José Soares, et al.. International distribution and age estimation of the Portuguese c.156\_157insAlu founder mutation. *Breast Cancer Research and Treatment*, 2010, 127 (3), pp.671-679. <10.1007/s10549-010-1036-3>. <hal-00615365>

**HAL Id: hal-00615365**

**<https://hal.science/hal-00615365v1>**

Submitted on 19 Aug 2011

**HAL** is a multi-disciplinary open access archive for the deposit and dissemination of scientific research documents, whether they are published or not. The documents may come from teaching and research institutions in France or abroad, or from public or private research centers.

L'archive ouverte pluridisciplinaire **HAL**, est destinée au dépôt et à la diffusion de documents scientifiques de niveau recherche, publiés ou non, émanant des établissements d'enseignement et de recherche français ou étrangers, des laboratoires publics ou privés.



HAL Authorization

## **International distribution and age estimation of the Portuguese *BRCA2***

### **c.156\_157insAlu founder mutation**

Ana Peixoto<sup>1</sup>, Catarina Santos<sup>1</sup>, Manuela Pinheiro<sup>1</sup>, Pedro Pinto<sup>1</sup>, Maria José Soares<sup>1</sup>, Patrícia Rocha<sup>1</sup>, Leonor Gusmão<sup>2</sup>, António Amorim<sup>2,3</sup>, Annemarie van der Hout<sup>4</sup>, Anne-Marie Gerdes<sup>5,6</sup>, Mads Thomassen<sup>5</sup>, Torben A. Kruse<sup>5</sup>, Dorte Cruger<sup>7</sup>, Lone Sunde<sup>8</sup>, Yves-Jean Bignon<sup>9</sup>, Nancy Uhrhammer<sup>9</sup>, Lucie Cornil<sup>9</sup>, Etienne Rouleau<sup>10</sup>, Rosette Lidereau<sup>10</sup>, Drakoulis Yannoukakos<sup>11</sup>, Maroulio Pertesi<sup>11</sup>, Steven Narod<sup>12</sup>, Robert Royer<sup>12</sup>, Maurício M. Costa<sup>13</sup>, Conxi Lazaro<sup>14</sup>, Lidia Feliubadaló<sup>14</sup>, Begoña Graña<sup>14</sup>, Ignacio Blanco<sup>14</sup>, Miguel de la Hoya<sup>15</sup>, Trinidad Caldés<sup>15</sup>, Philippe Maillet<sup>16</sup>, Gaele Benais-Pont<sup>16</sup>, Bruno Pardo<sup>16</sup>, Yael Laitman<sup>17</sup>, Eitan Friedman<sup>17</sup>, Eladio A. Velasco<sup>18</sup>, Mercedes Durán<sup>18</sup>, Maria-Dolores Miramar<sup>19</sup>, Ana Rodriguez Valle<sup>19</sup>, María-Teresa Calvo<sup>19</sup>, Ana Vega<sup>20</sup>, Ana Blanco<sup>20</sup>, Orland Diez<sup>21,22</sup>, Sara Gutiérrez-Enríquez<sup>22</sup>, Judith Balmaña<sup>23</sup>, Teresa Ramon y Cajal<sup>24</sup>, Carmen Alonso<sup>24</sup>, Montserrat Baiget<sup>25</sup>, William Foulkes<sup>26,27,28</sup>, Marc Tischkowitz<sup>26,28</sup>, Rachel Kyle<sup>26,28</sup>, Nelly Sabbaghian<sup>26,28</sup>, Patricia Ashton-Prolla<sup>29,30</sup>, Ingrid P. Ewald<sup>29,30</sup>, Thangarajan Rajkumar<sup>31</sup>, Luisa Mota-Vieira<sup>32</sup>, Giuseppe Giannini<sup>33</sup>, Alberto Gulino<sup>33</sup>, Maria I. Achatz<sup>34</sup>, Dirce M. Carraro<sup>35</sup>, Brigitte Bressac-de Paillerets<sup>36</sup>, Audrey Remenieras<sup>36</sup>, Cindy Benson<sup>37</sup>, Silvia Casadei<sup>38</sup>, Mary-Claire King<sup>38</sup>, Erik Teugels<sup>39</sup>, Manuel R. Teixeira<sup>1,40</sup>

<sup>1</sup>Department of Genetics, Portuguese Oncology Institute, Porto, Portugal

<sup>2</sup>IPATIMUP, Porto, Portugal

<sup>3</sup>Sciences Faculty, University of Porto, Portugal

<sup>4</sup>Department of Genetics, University Medical Centre Groningen, University of Groningen, The Netherlands

- <sup>5</sup>Department of Clinical Genetics, Odense University Hospital, Denmark
- <sup>6</sup>Department of Clinical Genetics, Rigshospital, Denmark
- <sup>7</sup>Department of Clinical Genetics, Vejle Hospital, Denmark
- <sup>8</sup>Department of Clinical Genetics, Aalborg and Aarhus University Hospitals, Denmark
- <sup>9</sup>Department of Oncogenetics, Centre Jean Perrin, Clermont-Ferrand, France
- <sup>10</sup>Laboratoire d'Oncogénétique - INSERM U735, Diagnostic Constitutionnel et Somatique, Institut Curie - Hôpital René Huguenin, St. Cloud, France
- <sup>11</sup>Molecular Diagnostics Laboratory, IRRP, National Centre for Scientific Research "Demokritos", Athens, Greece
- <sup>12</sup>Women's College Research Institute, University of Toronto, Canada
- <sup>13</sup>Hospital Universitário Clementino Fraga Filho-UFRJ, Rio de Janeiro, Brazil
- <sup>14</sup>Laboratori de Recerca Translacional, Institut Català d'Oncologia, L'Hospitalet de Llobregat, Spain
- <sup>15</sup>Laboratorio Oncología Molecular, Hospital Clínico San Carlos, Madrid, Spain
- <sup>16</sup>Laboratory of Molecular Oncology, University Hospital of Geneva, Switzerland
- <sup>17</sup>Susanne-Levy Gertner Oncogenetics Unit, The Danek Gertner Institute of Genetics, Chaim Sheba Medical Center, Tel-Hashomer, Israel
- <sup>18</sup>Grupo de Genética del Cáncer, Instituto de Biología y Genética Molecular (UVa-CSIC), Valladolid, Spain
- <sup>19</sup>Genetics Unit, Clinical Biochemistry Service, Miguel Servet University Hospital, Zaragoza, Spain
- <sup>20</sup>Fundación Pública Galega Medicina Xenómica-SERGAS & Grupo de Medicina Xenómica –USC, CIBER de enfermedades raras (CIBERER), Santiago de Compostela, Galicia, Spain
- <sup>21</sup>Oncogenetics Laboratory, University Hospital Vall Hebron, Barcelona, Spain

- <sup>22</sup>Vall d'Hebron Institute of Oncology (VHIO), Barcelona, Spain
- <sup>23</sup>Medical Oncology Department, University Hospital Vall Hebron, Barcelona, Spain
- <sup>24</sup>Department of Medical Oncology, Hospital Sant Pau, Barcelona, Spain
- <sup>25</sup>Department of Genetics, Hospital Sant Pau, Barcelona, Spain
- <sup>26</sup>McGill Program in Cancer Genetics, Departments of Human Genetics and Oncology, McGill University, Montreal, Quebec, Canada
- <sup>27</sup>The Research Institute, McGill University Health Centre, Montreal, Quebec, Canada
- <sup>28</sup>Segal Cancer Centre, Lady Davis Institute, Jewish General Hospital, Montreal, Quebec, Canada
- <sup>29</sup>Department of Genetics and Molecular Biology, Federal University of Rio Grande do Sul, Porto Alegre, Brazil
- <sup>30</sup>Department of Medical Genetics and Genomic Medicine Laboratory, Hospital de Clinicas de Porto Alegre, Brazil
- <sup>31</sup>Cancer Institute (WIA), Chennai, India.
- <sup>32</sup>Molecular Genetics and Pathology Unit, Hospital of Divino Espirito Santo of Ponta Delgada, São Miguel Island, Azores, Portugal
- <sup>33</sup>Dept. Experimental Medicine, Sapienza University, Rome, Italy
- <sup>34</sup>Department of Oncogenetics, Hospital A.C.Camargo and National Institute of Science and Technology in Oncogenomics, São Paulo, Brasil
- <sup>35</sup>Laboratory of Genomics and Molecular Biology, Hospital A.C.Camargo and National Institute of Science and Technology in Oncogenomics, São Paulo, Brasil
- <sup>36</sup>Genetics Department, Institut de Cancérologie Gustave Roussy, Villejuif, France
- <sup>37</sup>Genetic Clinic, Rhode Island Hospital, Providence, Rhode Island, USA
- <sup>38</sup>Departments of Medicine (Medical Genetics) and Genome Sciences, University of Washington School of Medicine, Seattle, Washington, USA

<sup>39</sup>Lab. Molecular Oncology, Free University of Brussels (VUB), Belgium

<sup>40</sup>Biomedical Sciences Institute (ICBAS), University of Porto, Portugal

**Running title:** Portuguese *BRCA2* founder mutation

**Key words:** c.156\_157insAlu *BRCA2* mutation, founder mutation, age estimation, hereditary breast/ovarian cancer.

**Correspondence:** Manuel R. Teixeira, MD, PhD, Department of Genetics, Portuguese Oncology Institute, Rua Dr. António Bernardino de Almeida, 4200-072 Porto, Portugal

Phone: +351 225084000; Fax: +351 225084016

E-mail: manuel.teixeira@ipoporto.min-saude.pt

## **Abstract**

The c.156\_157insAlu *BRCA2* mutation has so far only been reported in hereditary breast/ovarian cancer (HBOC) families of Portuguese origin. Since this mutation is not detectable using the commonly used screening methodologies and must be specifically sought, we screened for this rearrangement in a total of 5,443 suspected HBOC families from several countries. Whereas the c.156\_157insAlu *BRCA2* mutation was detected in 11 of 149 suspected HBOC families from Portugal, representing 37.9% of all deleterious mutations, in other countries it was detected only in one proband living in France and in four individuals requesting predictive testing living in France and in the USA, all being Portuguese immigrants. After performing an extensive haplotype study in carrier families, we estimate that this founder mutation occurred  $558 \pm 215$  years ago. We further demonstrate significant quantitative differences regarding the production of the *BRCA2* full length RNA and the transcript lacking exon 3 in c.156\_157insAlu *BRCA2* mutation carriers and in controls. The cumulative incidence of breast cancer in carriers did not differ from that of other *BRCA2* and *BRCA1* pathogenic mutations. We recommend that all suspected HBOC families from Portugal or with Portuguese ancestry are specifically tested for this rearrangement.

## Introduction

The pattern of *BRCA1* and *BRCA2* mutations in hereditary breast/ovarian cancer (HBOC) families varies widely among different populations. Many present a wide spectrum of different mutations throughout these genes, while some ethnic groups show a high frequency of particular mutations due to founder effects [1-2]. Identification of founder mutations makes it possible to use more specific approaches to molecular testing [3], allowing the analysis of more patients with less stringent selection criteria in a given population. Furthermore, a frequent founder mutation in a population allows a more accurate estimation of mutation-specific cumulative cancer incidence, facilitating also identification of genetic and environmental risk modifiers.

The c.156\_157insAlu *BRCA2* mutation was first described by Teugels et al. [4] in a Portuguese patient residing in Belgium. These authors demonstrated that this exon 3 Alu insertion causes an in-frame deletion of that exon at the mRNA level, and thereby deletes a transcriptional activation domain [4]. Machado et al. [5] later described a regional founder effect for this rearrangement in HBOC families mostly originated from central/southern Portugal. We recently evaluated the contribution of the c.156\_157insAlu *BRCA2* mutation to inherited predisposition to breast/ovarian cancer in families originated mostly from northern/central Portugal [6] and found that this rearrangement is responsible for more than half of all deleterious *BRCA2* mutations and about one-fourth of all deleterious mutations in HBOC families. Additionally, in light of some doubts raised about the pathogenic effect of *BRCA2* exon 3 skipping [7], we demonstrated that the *BRCA2* full length transcript is produced exclusively from the wild type allele in patients carrying the c.156\_157insAlu *BRCA2* rearrangement and that the mutant allele co-segregates with the disease in HBOC families and is absent in

healthy blood donors, although minimal exon 3 skipping in *BRCA2* mRNA can be found in negative controls [6,8].

Although all reported c.156\_157insAlu *BRCA2* mutations have so far been identified in Portuguese HBOC families [5-6,4], this mutation is not detected using the common screening methodologies and must be specifically sought [8,4], so one can not currently rule out its presence in other populations. To gain insight into the ancestral origin and population spread of the c.156\_157insAlu *BRCA2* mutation, we screened for this rearrangement in 5,443 suspected HBOC patients from several countries and performed an extensive haplotype study using closely linked microsatellite markers and single nucleotide polymorphisms (SNPs) in carrier families. In addition to estimating the age of the c.156\_157insAlu *BRCA2* mutation, we used real-time RT-PCR to quantify the production of the transcript lacking exon 3 in carriers and non-carriers.

## **Materials and methods**

### **Families**

This study comprised a total of 5,443 suspected HBOC families from 13 countries in Europe, North and South America and Asia. From Portugal, 149 new suspected HBOC families were selected for *BRCA1* and *BRCA2* mutation screening using previously described criteria [6,9] after written informed consent. Molecular testing at the Department of Genetics of the Portuguese Oncology Institute, Porto, Portugal (IPO-Porto) started by looking for the c.156\_157insAlu *BRCA2* mutation, followed by full *BRCA1* and *BRCA2* mutation screening with the previously reported methodology [9,6,8]. Additionally, screening for the c.156\_157insAlu *BRCA2* mutation was performed in 5,294 suspected HBOC families living in countries other than Portugal in

whom no deleterious *BRCA1/BRCA2* mutations had previously been found, with the following distribution: 1,209 from Spain (356 from L'Hospitalet de Llobregat, 341 from Madrid, 151 from Valladolid, 132 from Zaragoza, 123 from Santiago de Compostela, and 106 from Barcelona), 1,087 from France (650 from Clermont-Ferrand, 428 from Saint-Cloud, and nine from Villejuif, all the latter with Portuguese ancestry), 820 from Holland (Groningen), 758 from Denmark (Funen and Jutland), 400 from Greece (Athens), 219 from Switzerland (Geneva), 200 from Belgium (Brussels), 185 from Israel (Tel Aviv), 144 from Brazil (98 from Porto Alegre and 46 from S. Paulo), 103 from Canada (Montreal), 91 from India (Chennai), 75 from Italy (Rome), and three from USA (Seattle, all with Portuguese ancestry). Besides the suspected HBOC families, two consecutive series of breast cancer patients from Rio de Janeiro, Brazil (390), and Azorean Island of São Miguel, Portugal (86), were also screened for the c.156\_157insAlu *BRCA2* mutation. Additionally, predictive testing was performed in four individuals from two additional families (two relatives from each family living in Rhode Island, USA, and in Villejuif, France, respectively) with the c.156\_157insAlu *BRCA2* mutation identified elsewhere. IRB approval was obtained at each participating institution.

For the purpose of haplotype studies and age estimation of the c.156\_157insAlu *BRCA2* mutation, the 14 HBOC families we previously reported [6] and the family (four c.156\_157insAlu carriers) initially identified by Teugels et al. [4] were also included. The geographic origin of the c.156\_157insAlu *BRCA2* positive families was inferred from the birthplace of the oldest carrier or of the oldest family member most likely to be a carrier.

### **Screening for the c.156\_157insAlu *BRCA2* mutation**

The screening for the c.156\_157insAlu *BRCA2* mutation in the suspected HBOC families from Portugal, and of samples originating from the Athens, Barcelona, Madrid and Zaragoza labs, as well as the predictive testing of four individuals from two additional families living in Rhode Island and Villejuif, respectively, was performed at the Department of Genetics of IPO-Porto. The remaining cases were analyzed at the respective labs (except the cases from Rio de Janeiro, which were analyzed in Toronto) using the same protocol and a positive control provided by the Portuguese lab.

Screening for the c.156\_157insAlu *BRCA2* mutation was performed using two independent PCRs [6,8], one for exon 3 amplification and another specific for the Alu rearrangement. Using this strategy, we expect two amplicons in positive cases in the first PCR (one amplicon if negative) and one amplicon in the second PCR (none if negative). The second PCR helps to control the first PCR for potential problems with preferential amplification of the shorter fragment (wild type), whereas the first PCR controls for potential absence of amplification in the second PCR. This strategy of two independent PCRs, followed by sequencing of the genomic fragments in positive cases, allows the unambiguous detection of the c.156\_157insAlu *BRCA2* mutation [6,8]. Positive and negative controls were used in all experiments and all positive cases were confirmed in a second independent sample.

### **Real-time RT-PCR analysis**

Primers and probes for the transcripts *BRCA2* wild type (*BRCA2*-wt) and *BRCA2* lacking exon 3 (*BRCA2*- $\Delta$ ex3) were designed with Primer Express 2.0 (Applied Biosystems, Foster City, USA) (Supplementary file). To determine the relative expression levels of the target transcripts in each sample, the comparative  $C_T$  method was performed as described by Schmittgen and Livak [10]. The relative expression of

the transcripts in two different groups (that included ten carriers and eight controls) was calculated using the  $2^{-\Delta CT}$  method. The ratio  $2^{-\Delta CT} BRCA2-\Delta ex3 / 2^{-\Delta CT} BRCA2-wt$  was calculated for each sample. The Mann-Whitney U Test was used to compare the relative expression of those transcripts between the two groups. Statistical analysis was performed with SPSS version 11 and statistical significance was considered whenever  $P < 0.05$ .

### **Mutation-specific cumulative incidence of breast cancer**

The cumulative incidence of breast cancer in women with the c.156\_157insAlu *BRCA2* mutation was derived using the method of Kaplan and Meier, with unaffected individuals censored at the age of last follow-up or death without breast cancer. Only individuals shown to be carriers or obligate carriers were used for this calculation.

### **Microsatellite and SNP typing**

Haplotype analysis was carried out in families in which the c.156\_157insAlu *BRCA2* mutation was detected in at least one family member in addition to the proband. A total of 15 probands and 62 family members, including the three informative families previously reported [6] and the one described by Teugels et al. [4], were genotyped for polymorphic microsatellite markers flanking *BRCA2* as described [6]. The physical distances of the genetic markers were derived from the National Center for Biotechnology Information (NCBI) Map Viewer (genome build 36.3) (<http://www.ncbi.nlm.nih.gov/projects/mapview/>). All nine markers were assayed by PCR using fluorescently 5'-labeled primers. PCR products were run on an ABI PRISM 310 Genetic Analyser (Applied Biosystems) together with the fluorescence labeled DNA fragment size standard TAMRA.

Single-nucleotide polymorphism (SNP) markers were used to obtain a haplotype spanning ~1.1Mb encompassing the region between the D13S260 and D13S1695 microsatellite markers, where the first recombinant and/or mutational events were observed. In order to capture most of the genetic variation in this region and to avoid redundant SNP markers (i.e., markers in strong linkage disequilibrium), we performed Tag-SNP, namely Tagger Multimarker, using International HapMap Project CEPH (Utah residents with ancestry from northern and western Europe) population data ([www.hapmap.org](http://www.hapmap.org)). We developed SNaPshot assays for 19 SNP markers by multiplexed nucleotide primer extension reaction using dye label terminators (Applied Biosystems). The primers for multiplex amplification and single base extension (Supplementary file) were designed using the online Primer-BLAST tool (<http://www.ncbi.nlm.nih.gov/tools/primer-blast/>). AutoDimer ([www.cstl.nist.gov/strbase/NIJ/AutoDimer.htm](http://www.cstl.nist.gov/strbase/NIJ/AutoDimer.htm)) was used to test for potential hairpin structures and primer dimers. The 19 SNPs were PCR amplified in four multiplex reactions with amplicon length between 100 bp and 450 bp. The multiplex SNaPshot reaction and capillary electrophoresis was done following the manufacturer's protocol (Applied Biosystems).

### **Haplotype construction and estimation of mutation age**

Haplotype construction was performed manually based on the genotypes obtained of index cases and family members. We estimated the age of the c.156\_157insAlu *BRCA2* mutation from the variation accumulated in their ancestral haplotypes, as described by Martins et al.[11] This method takes into account both recombination ( $c$ ) and mutation ( $\mu$ ) rates in the generation of variation. The probability of change per generation ( $\epsilon$ ) is given by  $\epsilon=1-[(1-c)(1-\mu)]$ , and the average of mutation and recombination events ( $\lambda$ )

equals  $\epsilon t$ , where  $t$  is the number of generations. The recombination rate ( $c$ ) was estimated from the physical distance between the two most distant markers (D13S1700 and D13S267) using a conversion factor calculated in Rutgers Map Interpolator (<http://compgen.rutgers.edu/old/map-interpolator/>). The estimate of average mutation rate used was  $7.8 \times 10^{-4}$  [12] for dinucleotides and two times lower for tetranucleotides.

## Results

### Detection of the c.156\_157insAlu *BRCA2* mutation

Of the 149 Portuguese probands studied for germline mutations in the *BRCA1* and *BRCA2* genes at IPO-Porto, 11 patients presented the c.156\_157insAlu *BRCA2* mutation (Figure 1) and 18 patients presented other deleterious mutations in either *BRCA1* (10 patients) or *BRCA2* (8 patients) genes (data not shown). Together with the 14 probands we previously reported with this mutation [6], a total number of 25 HBOC families with the c.156\_157insAlu *BRCA2* rearrangement had been identified at IPO-Porto at the time of writing. Altogether, 68 individuals from these 25 HBOC families have so far been tested for the c.156\_157insAlu *BRCA2* mutation and 39 of them were shown to be carriers of the mutant allele. The geographic origins of all the c.156\_157insAlu *BRCA2* positive families are shown in Supplementary Figure 1. Although most of the families originated from northern/central Portugal, most likely reflecting our target population for genetic testing, we also detected the c.156\_157insAlu mutation in families from southern Portugal and Madeira Island.

Of the 5,294 suspected HBOC families with no known deleterious mutation originating from other countries, only one proband tested in Clermont-Ferrand was shown to carry the c.156\_157insAlu *BRCA2* mutation. Interestingly, this patient belongs

to a family of Portuguese origin living in France. Additionally, the two relatives living in Rhode Island (family with origin in Mangualde, central Portugal) and the two relatives living in Villejuif (family with origin in Porto, Portugal) for whom we performed predictive testing, were carriers of the c.156\_157insAlu *BRCA2* mutation that had previously been identified elsewhere in Portuguese family members. Finally, the patient originally reported by Teugels et al. [4] belongs to a Portuguese family originally from the region of Guarda (central Portugal).

### **Quantitative transcript analysis**

Real-time RT-PCR showed quantitative differences between the full length and the *BRCA2*- $\Delta$ ex3 transcripts in c.156\_157insAlu *BRCA2* mutation carriers and controls. The relative expression of the *BRCA2*- $\Delta$ ex3 transcript was six fold higher in carriers compared with controls, whereas a three fold decrease was observed for the *BRCA2*-wt transcript in patients compared with controls (Figure 2). The difference observed between patients and controls was statistically significant ( $P = 0.00032$ ).

### **Mutation-specific cumulative incidence**

Using the method of Kaplan and Meier, the cumulative incidence of breast cancer in women carrying the c.156\_157insAlu *BRCA2* mutation was 90% until the age of 60 years (Figure 3).

### **Ancestral STR-based haplotypes and age estimate**

Nine different haplotypes were phased for 11 out of the 15 families, three of them reported earlier [6]. The results of the haplotype analyses for the 11 informative families are shown in Table 1 and the most parsimonious relationships among flanking

haplotypes are presented as a phylogenetic network in Figure 4. The probability of mutation *versus* recombination was evaluated, considering the minimum number of stepwise mutations. In the 11 informative families, SNP haplotypes were constructed in order to establish if a specific microsatellite was different from the consensus because of a recombination event rather than a mutation (Supplementary Figure 2).

Based on the mutation and recombination events observed in microsatellite haplotypes and assuming a generation time of 25 years, the age estimate for the c.156\_157insAlu *BRCA2* mutation is 558±215 years (Table 1).

## Discussion

The c.156\_157insAlu *BRCA2* mutation has so far only been reported in HBOC families of Portuguese origin. Here we show that this rearrangement accounts for 57.8% of the *BRCA2* mutations and 37.9% of all deleterious mutations in HBOC families originating mostly from northern/central Portugal. This study confirms our and other earlier findings indicating that this is by far the most common BRCA mutation in Portuguese families with hereditary predisposition to breast/ovarian cancer, being detected in about 8% of all probands tested and presenting a nation-wide distribution [5-6]. This high frequency makes it cost-effective to test specifically for this rearrangement prior to screening the entire coding regions of *BRCA1* and *BRCA2* in suspected HBOC families from Portugal or with Portuguese ancestry. Furthermore, complementing earlier data showing that the c.156\_157insAlu *BRCA2* mutation leads to skipping of exon 3 [4] and that minimal exon 3 skipping in *BRCA2* mRNA can be found in negative controls [6,8], we here demonstrate by real-time RT-PCR that carriers present significantly more *BRCA2*- $\Delta$ ex3 transcripts and much less full length transcripts than controls. We further show that the cumulative incidence of breast cancer in

c.156\_157insAlu *BRCA2* mutation carriers does not differ from that of other *BRCA2* and *BRCA1* pathogenic mutations in our population (data not shown) or elsewhere [13], further strengthening its role as the major contributor to hereditary predisposition to breast cancer in Portugal. Although the function, if any, of the *BRCA2* exon 3 skipping seen in controls is unknown, the observed penetrance in c.156\_157insAlu carriers would not be expected if this transcript was fully functional. We therefore conclude that this *BRCA2* rearrangement causes hereditary breast/ovarian cancer because the mutated allele is only able to give rise to *BRCA2*- $\Delta$ ex3 transcripts and not to *BRCA2*-wt transcripts.

Since the c.156\_157insAlu *BRCA2* mutation had only been reported in HBOC families of Portuguese origin [5-6,4] and is not detectable with commonly used screening methodologies, one can not exclude that it is present in other populations until it is specifically sought. To further evaluate whether or not it constitutes a population-specific founder mutation, we screened for the c.156\_157insAlu *BRCA2* rearrangement outside Portugal in more 5,294 suspected HBOC families with no known deleterious *BRCA1/BRCA2* mutations coming from several countries mainly from Europe, but also from Asia and North and South America. In addition to the family identified in Belgium by Teugels et al. [4], we now detected this mutation in one proband living in France and in four individuals requesting predictive testing living in France and in the USA, all having in common the fact that they are relatively recent immigrants of Portuguese origin in those countries. Interestingly, c.156\_157insAlu *BRCA2* mutation was not detected in 1,209 suspected HBOC families from Spain, including those from Galicia, the Spanish region with which Portugal shares more linguistic and cultural links, as also demonstrated by our recent finding of a common ancestry for the Portuguese HBOC families presenting the R71G *BRCA1* founder mutation of Galician origin [14].

Our findings indicate that, within the relatively large sample population studied, the c.156\_157insAlu *BRCA2* mutation is unique to HBOC families of Portuguese ancestry, a fact that is hardly compatible with the age of about 2500 years previously estimated by Machado et al. [5]. Although geographic distribution of mutations is only an indirect measure of mutation age, more widespread mutations tend to be older than mutations showing a regional distribution, with the development of urbanization and industrialization in the past 700 years leading to rapid populations growth and therefore to the recent appearance of vast numbers of new alleles, some of which cause hereditary breast/ovarian cancer, each being specific to one population or even to one family [15]. In order to get a more accurate mutation age estimate of the c.156\_157insAlu *BRCA2* rearrangement, we performed an extensive haplotype analysis having in mind that the size of an ancestral haplotype around a mutation is inversely correlated with the number of generations separating the common ancestor from the families carrying that rearrangement. After performing the haplotype reconstruction in the 11 informative families and assuming a generation time of 25 years, we estimate the age of the c.156\_157insAlu *BRCA2* mutation to be  $558 \pm 215$  years, that is, most likely well after Portugal became politically independent (in 1143). Our estimate is consistent with the widespread distribution of the mutation in Portugal [5-6], the country demographic history (the North has been and still is consistently the source of migrants to the South), its occasional finding in countries with strong Portuguese immigration, and with its absence in the other populations studied (*e.g.* absence of the mutation in Spain, namely in Galicia). Nevertheless, statistical methods for estimating mutation ages are relatively crude [16], are dependent on sample representativeness, and estimate only the age of the common ancestor to the informative families that have been identified. The older age estimate advanced by Machado et al. [5] was based upon a different sample of

Portuguese patients (mostly from Center and South) and using a different age estimate method. However these authors recognize that the age of the mutation may be «overestimated, either because of the fact that mutation rates of the microsatellite markers were not taken into account or because recombination events in two families were considered». On the other hand, although the mutation has so far only been detected in Portugal and in a few families with Portuguese ancestry living in Belgium, France or the USA, we can not conclusively exclude its presence in other countries that have strong historical links with Portugal, such as those having Portuguese as official language (Brazil, Angola, Mozambique, Cape Verde, Guinea-Bissau, São Tomé and Príncipe, East Timor, and Macau) or other countries with a large community of Portuguese immigrants. In fact, one of our probands with the c.156\_157insAlu *BRCA2* mutation illustrates this possibility: although she is now living in Portugal, her ancestors originating from North Portugal had moved several generations ago to Brazil and later to Angola, where reportedly various affected relatives lived.

In conclusion, we showed that the c.156\_157insAlu *BRCA2* rearrangement is a Portuguese founder mutation originated about  $558 \pm 215$  years ago, accounting for the majority of the *BRCA2* mutations and for about one third of all deleterious germline mutations in Portuguese HBOC families. We therefore recommend that all suspected HBOC families from Portugal or with Portuguese ancestry are specifically tested for this rearrangement, ideally prior to screening the entire coding regions of *BRCA1* and *BRCA2*. We further showed that the cumulative incidence of breast cancer in c.156\_157insAlu *BRCA2* mutation carriers does not differ from that of other *BRCA2* and *BRCA1* pathogenic mutations and that this *BRCA2* rearrangement causes hereditary breast/ovarian cancer because the mutated allele is only able to give rise to *BRCA2*- $\Delta$ x3 transcripts and not to *BRCA2*-wt transcripts.

## **Acknowledgements**

This study was supported by Ministério da Saúde (Project N° 15/2007) and Liga Portuguesa Contra o Cancro. IPATIMUP was funded by Fundação para a Ciência e Tecnologia, through POCI (Programa Operacional Ciência e Inovação 2010). MT and WDF are supported by the Susan G. Komen Foundation for the Cure, the Jewish General Hospital Weekend to End Breast Cancer and the Fonds de la Recherche en Santé du Québec. EAV and MD are supported by grants PI061102 (Ministerio de Ciencia e Innovación) and 200820I135 (CSIC). AV and AB thank María J. Magdalena for her excellent technical support at the Fundación Pública Galega de Medicina Xenómica. PAP and IPE were supported by CNPq, CAPES, Fundação de Incentivo à Pesquisa do Hospital de Clínicas de Porto Alegre, and Rede Nacional de Câncer Familiar, Brazil. The authors declare that they have no conflict of interest.

## References

1. Ferla R, Calo V, Cascio S, Rinaldi G, Badalamenti G, Carreca I, Surmacz E, Colucci G, Bazan V, Russo A (2007) Founder mutations in BRCA1 and BRCA2 genes *Ann Oncol* 18:93-98.
2. Fackenthal JD, Olopade OI (2007) Breast cancer risk associated with BRCA1 and BRCA2 in diverse populations *Nat Rev Cancer* 7 (12):937-948.
3. Filippini S, Blanco A, Fernandez-Marmiesse A, Alvarez-Iglesias V, Ruiz-Ponte C, Carracedo A, Vega A (2007) Multiplex SNaPshot for detection of BRCA1/2 common mutations in Spanish and Spanish related breast/ovarian cancer families *BMC Med Genet* 8:40.
4. Teugels E, De Brakeleer S, Goelen G, Lissens W, Sermijn E, De Greve J (2005) De novo Alu element insertions targeted to a sequence common to the BRCA1 and BRCA2 genes *Hum Mutat* 26 (3):284.
5. Machado PM, Brandao RD, Cavaco BM, Eugenio J, Bento S, Nave M, Rodrigues P, Fernandes A, Vaz F (2007) Screening for a BRCA2 rearrangement in high-risk breast/ovarian cancer families: evidence for a founder effect and analysis of the associated phenotypes *J Clin Oncol* 25 (15):2027-2034.
6. Peixoto A, Santos C, Rocha P, Pinheiro M, Principe S, Pereira D, Rodrigues H, Castro F, Abreu J, Gusmao L, Amorim A, Teixeira MR (2009) The c.156\_157insAlu BRCA2 rearrangement accounts for more than one-fourth of deleterious BRCA mutations in northern/central Portugal *Breast Cancer Res Treat* 114 (1):31-38.
7. Diez O, Gutierrez-Enriquez S, Ramon y Cajal T, Alonso C, Balmana J, Llorc G (2007) Caution should be used when interpreting alterations affecting the exon 3 of the BRCA2 gene in breast/ovarian cancer families *J Clin Oncol* 25 (31):5035-5036.

8. Peixoto A, Santos C, Rocha P, Pinto P, Bizarro S, Teixeira MR (2009) Molecular diagnosis of the Portuguese founder mutation BRCA2 c.156\_157insAlu Breast Cancer Res Treat 117 (1):215-217.
9. Peixoto A, Salgueiro N, Santos C, Varzim G, Rocha P, Soares MJ, Pereira D, Rodrigues H, Bento MJ, Fraguas A, Moura G, Regateiro F, Castedo S, Teixeira MR (2006) BRCA1 and BRCA2 germline mutational spectrum and evidence for genetic anticipation in Portuguese breast/ovarian cancer families Fam Cancer 5 (4):379-387.
10. Schmittgen TD, Livak KJ (2008) Analyzing real-time PCR data by the comparative C(T) method Nat Protoc 3 (6):1101-1108.
11. Martins S, Calafell F, Gaspar C, Wong VC, Silveira I, Nicholson GA, Brunt ER, Tranebjaerg L, Stevanin G, Hsieh M, Soong BW, Loureiro L, Durr A, Tsuji S, Watanabe M, Jardim LB, Giunti P, Riess O, Ranum LP, Brice A, Rouleau GA, Coutinho P, Amorim A, Sequeiros J (2007) Asian origin for the worldwide-spread mutational event in Machado-Joseph disease Arch Neurol 64 (10):1502-1508.
12. Gyapay G, Morissette J, Vignal A, Dib C, Fizames C, Millasseau P, Marc S, Bernardi G, Lathrop M, Weissenbach J (1994) The 1993-94 Genethon human genetic linkage map. Nat Genet, vol 7, 1994/06/01 edn. doi:10.1038/ng0694supp-246
13. Ford D, Easton DF, Stratton M, Narod S, Goldgar D, Devilee P, Bishop DT, Weber B, Lenoir G, Chang-Claude J, Sobol H, Teare MD, Struewing J, Arason A, Scherneck S, Peto J, Rebbeck TR, Tonin P, Neuhausen S, Barkardottir R, Eyfjord J, Lynch H, Ponder BA, Gayther SA, Zelada-Hedman M, et al. (1998) Genetic heterogeneity and penetrance analysis of the BRCA1 and BRCA2 genes in breast

cancer families. The Breast Cancer Linkage Consortium Am J Hum Genet 62 (3):676-689.

14. Santos C, Peixoto A, Rocha P, Vega A, Soares MJ, Cerveira N, Bizarro S, Pinheiro M, Pereira D, Rodrigues H, Castro F, Henrique R, Teixeira MR (2009) Haplotype and quantitative transcript analyses of Portuguese breast/ovarian cancer families with the BRCA1 R71G founder mutation of Galician origin Fam Cancer 8 (3):203-208.
15. McClellan J, King MC (2010) Genetic heterogeneity in human disease Cell 141 (2):210-217.
16. Rannala B, Bertorelle G (2001) Using linked markers to infer the age of a mutation Hum Mutat 18 (2):87-100.

## Figure legends

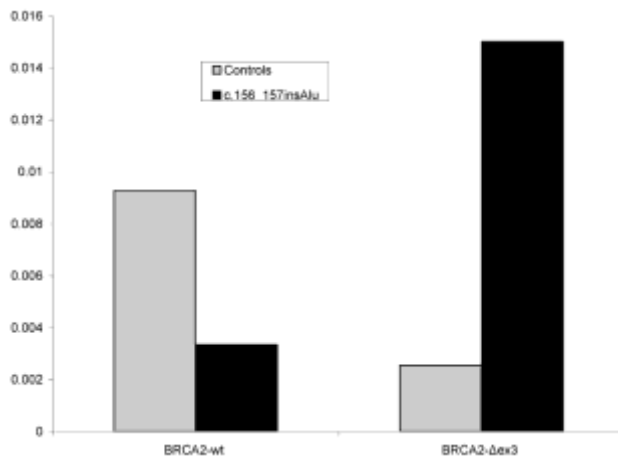
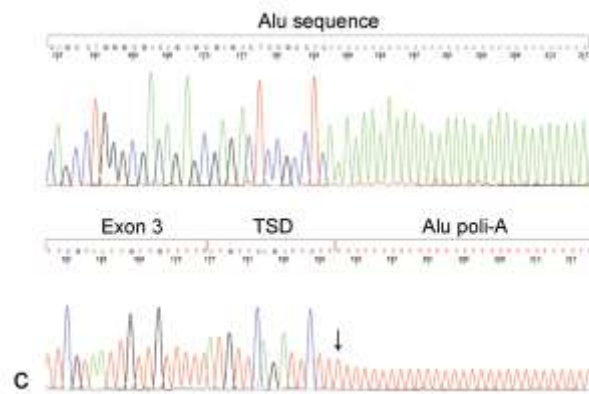
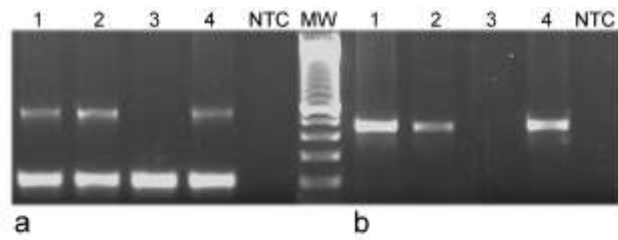
**Fig. 1** - Molecular diagnosis of the *BRCA2* c.156\_157insAlu mutation using two independent PCR analyses, showing positive cases in lanes 1 and 2 and a negative case in lane 3. (a) PCR specific for *BRCA2* exon 3, showing an additional band resulting from the insertion of a DNA fragment of about 350bp long within exon 3 of *BRCA2* (c.156\_157insAlu mutation; lane 1 and 2). (b) PCR specific for the c.156\_157insAlu *BRCA2* mutation. Lane 4 corresponds to a positive control and NTC is a non template control. MW refers to 100 bp DNA standard. (c) Sequence electrophorograms of the amplified genomic fragment of a mutation positive case (forward, top; reverse, bottom), confirming the Alu insertion (arrow) in *BRCA2* gene exon 3. The Alu insertion is flanked by a short sequence duplication (TSD) as previously described by Teugels et al. [4].

**Fig. 2** - Real-time RT-PCR quantification of the altered transcript ratios in *BRCA2* c.156\_157insAlu carriers as compared with controls. The relative expression of the *BRCA2*- $\Delta$ ex3 transcript was six fold higher in carriers compared with controls, whereas a three fold decrease was observed for the *BRCA2*-wt transcript in patients compared with controls.

**Fig. 3** - Cumulative incidence of breast cancer among c.156\_157insAlu *BRCA2* germline mutation carriers, reaching 90% at about 60 years of age.

**Fig. 4** - Phylogenetic network showing the most parsimonious relationships among flanking short tandem repeat-based haplotypes in families carrying the c.156\_157insAlu

*BRCA2* mutation. Circle and line sizes are proportional to the number of families and stepwise mutations, respectively. Diamonds indicate recombination events. When it was not possible to determine if the most parsimonious relationship was due to a stepwise mutation or a recombination event we represented it by dashed diamonds.



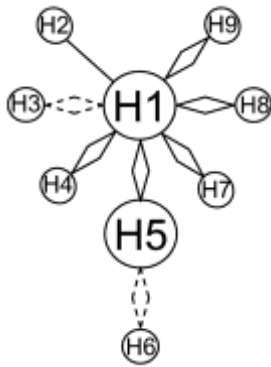
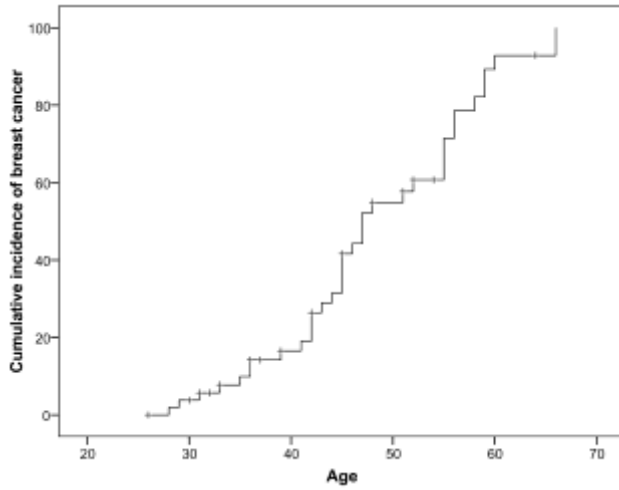


Table 1- Age estimation of the ancestral c.156\_157insAlu *BRCA2* mutation.

Family ID	Haplotype <sup>a</sup>	Families, No.	Mutation steps/ recombination events No.
4001; 6216	H1: <b>317-160-156-299-230-242-228-144-158</b>	2	0
5931	H2: <b>317-160-156-295-230-242-228-144-158</b>	1	1
6045	H3: <b>313-160-156-299-230-242-228-144-158</b>	1	1
14230	H4: <b>269-160-156-299-230-242-228-144-158</b>	1	1
7772; 14331	H5: <b>317-160-156-299-230-234-234-148-144</b>	2	1
14459	H6: <b>321-160-156-299-230-234-234-148-144</b>	1	2
3854	H7: <b>317-160-156-307-226-252-234-148-144</b>	1	1
12703	H8: <b>317-160-156-299-230-252-234-144-156</b>	1	1
3286	H9: <b>309-162-160-299-230-242-228-144-158</b>	1	1

---

<sup>a</sup> The nine microsatellite markers used were: D13S1700, D13S260, D13S1698, D13S1701, D13S171, D13S1695, D13S1694, D13S310 and D13S267 (from left to right). Ancestral haplotype in which Alu insertion probably occurred is indicated in bold.

<sup>b</sup> The recombination rate ( $c$ ) was based on the physical distance between the two most distant markers (1930.8 kilobases;  $c=0.030597$  cM) using a conversion factor calculated in Rutgers Map Interpolator. The estimated probability of mutation per generation and per haplotype was 0.00624 (as seven dinucleotide and two tetranucleotide short tandem repeats were studied).