



HAL
open science

Microcephalin is a new novel prognostic indicator in breast cancer associated with BRCA1 inactivation

Julie Richardson, Abeer M. Shaaban, Mohamed Kamal, Rawiah Alisary, Clare Walker, Ian O. Ellis, Valerie Speirs, Andrew R. Green, Sandra M. Bell

► To cite this version:

Julie Richardson, Abeer M. Shaaban, Mohamed Kamal, Rawiah Alisary, Clare Walker, et al.. Microcephalin is a new novel prognostic indicator in breast cancer associated with BRCA1 inactivation. Breast Cancer Research and Treatment, 2010, 127 (3), pp.639-648. 10.1007/s10549-010-1019-4 . hal-00615362

HAL Id: hal-00615362

<https://hal.science/hal-00615362>

Submitted on 19 Aug 2011

HAL is a multi-disciplinary open access archive for the deposit and dissemination of scientific research documents, whether they are published or not. The documents may come from teaching and research institutions in France or abroad, or from public or private research centers.

L'archive ouverte pluridisciplinaire **HAL**, est destinée au dépôt et à la diffusion de documents scientifiques de niveau recherche, publiés ou non, émanant des établissements d'enseignement et de recherche français ou étrangers, des laboratoires publics ou privés.

Microcephalin is a new novel prognostic indicator in breast cancer associated with BRCA1 inactivation.

Julie Richardson (1), Abeer M. Shaaban (2), Mohamed Kamal (1, 4) Rawiah Alisary (1), Clare Walker (2), Ian O. Ellis (3), Valerie Speirs (1) Andrew R. Green (3) and Sandra M. Bell (1).

¹Leeds Institute of Molecular Medicine, University of Leeds, Wellcome Trust Brenner Building, St. James's University Hospital, Leeds, LS9 7TF.

²St James's Institute of Oncology, St James's University Hospital, Leeds, LS9 7TF

³Department of Pathology, School of Molecular Medical Sciences, University of Nottingham and Nottingham University Hospitals NHS Trust, Nottingham City Hospital, Derby Road, Nottingham NG5 1PB

⁴Department of Zoology, University of Benha, Benha, Egypt

Corresponding author: Dr Sandra M Bell

Leeds Institute of Molecular Medicine

University of Leeds Wellcome Trust Brenner Building, Level 8

St James's University Hospital

Leeds

LS9 7TF

Tel Number: 0113 343 8444

Fax Number: 0113 343 8603

E – mail: medsemb@leeds.ac.uk

Keywords: Microcephalin, breast cancer, immunohistochemistry, HER2, triple negative, BRCA1.

Abstract

Purpose: We have investigated the expression of the microcephalin (MCPH1) protein to evaluate its prognostic importance in breast cancer. Microcephalin is a damage response protein involved in the regulation of BRCA1 and BRCA2. *BRCA1* mutations are often associated with basal-like breast cancer, which are also often negative for oestrogen receptor (ER), progesterone receptor (PR) and HER2.

Methods: MCPH1 immunohistochemistry was performed on 319 breast cancers prepared as tissue microarray and correlated with pathology, survival, ER, PR, HER2, EGFR, CK5/6, CK14 and BRCA1 expression.

Results: After performing continuous data analysis mean microcephalin expression decreased with increasing grade ($p < 0.006$). Mean microcephalin expression was lower in ER/PR negative ($p < 0.001$) and triple negative cancers ($p < 0.004$). Conversely an association with HER2 positive cancers was also identified ($p < 0.034$). Reduced microcephalin also correlated with reduced nuclear BRCA1 staining ($p < 0.001$). No association was identified with basal markers. After dichotomizing the data into low and high microcephalin expression, reduced expression was identified in 29% (93/319) of breast cancers. An association with low expression was identified in invasive ductal carcinomas with breast cancer specific survival (BCSS) ($p = 0.052$). Multivariate analysis of ductal carcinomas showed that microcephalin, together with lymph node involvement and tumour size were independent predictors of BCSS ($p = 0.037$).

Conclusions: Microcephalin expression is reduced in 29% of breast cancers, particularly in higher grade tumours and BRCA1 negative cases. Microcephalin is an independent predictor of BCSS in invasive ductal breast cancer patients and may prove to be a useful biomarker for the identification of aggressive breast cancers.

Introduction

Previously, we identified mutations in *MCPH1* a DNA damage response gene, as a cause of primary microcephaly [1]. The MCPH1 protein called microcephalin is also known as BRIT1 (BRCT-repeat inhibitor of hTERT expression) which was initially identified as a transcriptional repressor of human telomerase reverse transcriptase [2]. Microcephalin contains three BRCA1 carboxyl-terminal (BRCT) motifs which were originally identified in the *BRCA1* gene and have been identified in other proteins involved in DNA repair and cell cycle checkpoints [3]. The DNA damage response is complex and MCPH1 appears to have a number of important roles in this process. In response to ionizing radiation and ultra-violet light, MCPH1 co-localises to DNA damage response foci with other DNA repair proteins such as γ H2AX [4]. MCPH1 knockdown reduces the formation of foci by the DNA repair proteins MDC1, 53BP1 and ATM [5]. MCPH1 interacts directly with BRCA2 and regulates the amount of both BRCA2 and Rad51 at DNA repair sites [6]. SiRNA knockdown of MCPH1 expression decreases BRCA1 and CHK1 expression and impairs the ionizing radiation induced S and G2/M checkpoints [7, 8]. MCPH1 plays a role in G2-M checkpoint control by regulating CHK1 localization [9]. These studies strongly implicated MCPH1 as an early mediator in the DNA damage response, regulating the recruitment of repair proteins to the site of damage and triggering both the ATM/ATR damage response signalling cascades. Recently microcephalin has been shown to interact with the transcription factor E2F1, leading to alterations in the regulation of CHK1, BRCA1, RAD51, p73 and caspases [10].

The function of microcephalin in DNA repair and checkpoint control makes it a potential tumour suppressor gene [5, 11]. Deletions at the MCPH1 loci (8p23) are associated with tumour development and poor prognosis in a wide range of cancers including breast cancer [12]. Previously comparative genomic hybridization (CGH) studies have identified decreased MCPH1 DNA copy number in 72% (39/54) of breast cancer cell lines and in 40% (35/87) of ovarian cancers. Decreased MCPH1 mRNA levels were also identified in 63% (19/30) of ovarian cancers. These findings support the hypothesis that MCPH1 is a tumor suppressor gene [5].

Breast cancer is a heterogeneous disease both clinically and genetically. Recently breast cancer has been classified into molecular sub groups based on their gene expression profiles, these include luminal A and B, HER2 amplified tumours, basal-like tumours and the normal-breast like tumours [13]. These subgroups could also be identified using immunohistochemistry for hormone receptor, HER2 and basal markers [14,15].

Interestingly dysfunction of the BRCA1 pathway is frequently observed in basal-like breast cancers [16]. At least three quarters of breast cancers arising in germ line BRCA1 mutation carriers have a basal-like phenotype by immunohistochemistry [17] or gene expression microarray [13]. Basal-like breast cancers express basal/myoepithelial markers such as cytokeratin 5/6, 14, 17 or vimentin and EGFR (HER1) [15,18]. This subtype of breast cancer has an aggressive phenotype, poor prognosis and lack expression of the receptors estrogen alpha (ER), progesterone (PR) and HER2 [15,18], often referred to as triple negative. Potentially due to the function of microcephalin in DNA repair, particularly the BRCA1 pathway, reduced microcephalin expression may be associated with the basal-like phenotype.

In this study we have investigated microcephalin expression in a large well-characterised series of breast cancer samples with long term follow-up to determine its clinical and biological relevance. The association of microcephalin expression with the biomarkers ER, PR, HER2, EGFR, CK5/6, CK14, and BRCA1 has also been investigated.

Materials and Methods

Patients

This study involves two independent cohorts of breast cancer cases. The first cohort containing 65 cases from Leeds Teaching Hospitals Histopathology archives were designated as the training set and the second cohort containing 319 cases from Nottingham University Hospitals NHS Trust Histopathology archives were used as the validation set. The Leeds cases were unselected from patients presenting between 1987 and 2004. The Nottingham cases were unselected from patients presenting between 1988 and 1998. Clinical history and tumour characteristics (age, tumour type, size, histological grade, lymph node status, and NPI) were available for both series. In both sample cohorts DFS was defined as the interval (months) from primary surgical treatment to the first loco regional or distant recurrence. BCSS was taken as time (months) from primary surgical treatment to time of death from breast cancer. Patients received Tamoxifen or classical cyclophosphamide, methotrexate and 5-fluorouracil chemotherapy dependent on their ER status. The Nottingham series is well characterised with data available for other biomarkers involved in breast cancer including ER, PR, HER2, EGFR, BRCA1 and basal cytokeratins (CK) 5/6 and 14 [14,19]. Ethical approval for this study has been obtained from the Local Research Ethics Committee of the Leeds Teaching Hospitals NHS Trust and from the Nottingham Research

Ethics Committee 2. The reporting recommendations for tumour marker prognostic studies (REMARK) criteria, recommended by Mc Shane et al [20] have been followed throughout this study.

Immunohistochemistry

To optimize the MCPH1 staining protocol, full sections of paraffin embedded tissue from both normal and breast tumour samples were stained using a range of primary antibody dilutions, incubation times and antigen retrieval methods. MCPH1 was stained on full sections of patient's samples in the training set, while in the validation set TMAs were constructed as previously described [14]. Immunohistochemical analysis of microcephalin expression was performed with the rabbit anti-microcephalin antibody (BL1610, Bethyl Laboratories) at a 1:50 dilution on full sections and at 1:100 on the TMA. To avoid reduction in immunoreactivity of tissue sections over time the sections were cut just before staining.

Four μm TMA sections were deparaffinised in graded alcohols. Endogenous peroxide activity was inhibited by immersing the sections in 0.5% H₂O₂. Antigen retrieval was carried out by pressure cooking slides for 2 minutes at full pressure in 1% Antigen Unmasking Solution (Vector Laboratories Ltd, Peterborough, UK). A casein incubation (1/2 dilution) was also carried out to reduce non-specific staining (Vector Laboratories). Sections were incubated with the antibody for 2 hours at room temperature. Bound antibody was detected with EnVision™ polymer (DAKO, Ely, Cambridgeshire, UK), using diaminobenzine as the substrate (Sigma, Poole, Dorset, UK). Sections were counterstained with Mayer's haematoxylin (VWR International Ltd, Poole, England). Negative controls, without primary antibody and positive controls of normal breast tissue were included in each batch of immunohistochemistry.

Immunohistochemical evaluation

The TMA sections were scored using high resolution digital images (NanoZoomer, Hamamatsu Photonics, Welwyn Garden City, UK), at 20X magnification, using a web-based interface (Distiller, Slidepath Ltd., Dublin, Ireland). Nuclear and cytoplasmic staining was scored as a percentage of the positive cells in relation to the total number of tumour cells present. All samples were scored by one observer (SMB) and a representative sample was counter-scored by a specialist consultant breast histopathologist (AMS) to ensure reproducibility. The immunoreactivity, scoring and categorisation of ER, PR, HER2, EGFR, CK5/6, CK14, BRCA1 and triple negative phenotype were defined in this series as previously described [14,19].

Statistical analysis

The percentage of cells with nuclear microcephalin staining was evaluated as a continuous variable to avoid the loss of information that results from categorization of continuous data [21, 22]. However, for completeness the percentage of nuclear microcephalin staining was also dichotomized by sequentially testing every cut-off value versus BCSS using the Kaplan–Meier curves. The cut-off point which showed the highest significance between patient groups with regard to BCSS was used for subsequent analyses. Statistical analysis was performed using SPSS version 16.0, (SPSS Inc., Chicago, IL, USA). Pearson correlation was used to correlate microcephalin staining as a percentage of the positive cells versus tumour size, age of patient, number of positive nodes, vascular invasion, BCSS duration and DFS duration as continuous variables. The Chi-square test/Fisher exact test or Mann–Whitney U-test (non parametric) was used for comparisons among groups/categorical data as appropriate. Survival curves were generated using the Kaplan–Meier method, and differences among groups were analyzed by the log-rank test and confirmed by applying the Cox regression model. Previously published cut-off values were used for the established prognostic factors in this series of patients [14, 19]. For systematic modeling, a forward stepwise multivariable Cox regression model was used, testing the independent prognostic relevance of microcephalin immunoreactivity. All statistical tests were two-sided and a $p \leq 0.05$ value was considered statistically significant.

RESULTS

Patient's characteristics

This study included two groups of patients after excluding core loss and unscorable cores. The first group had 65 patients and is considered as a training set, while the second group had 319 patients and is considered as a validation set. Detailed patient characteristics of the validation set are summarized in Table 1.

Since this is the first large immunohistochemistry study on microcephalin expression in breast cancer no prior cut off point was available therefore two types of analysis were performed. Initially the percentage of cells with nuclear microcephalin staining was treated as continuous data. In addition we dichotomized the percentage of nuclear microcephalin staining. A cut off point of 35% positively stained cells showed the most significant difference between the two groups of patients (low and high microcephalin) in BCSS in the validation study. There was insufficient follow up information to meet the statistical analysis requirements in the training set.

However, in the validation set, during a median follow-up period of 124 months (range 5-229 months), death occurred in 101/293 patients (34.5%) and metastasis or/and recurrence occurred in 133/293 patients (45%).

Microcephalin expression in normal and tumour breast tissues

Initially the expression of microcephalin was evaluated in whole breast cancer sections (n = 65). Strong nuclear staining was identified in normal breast samples (Fig. 1a). In the tumour samples, microcephalin was expressed in both the nucleus and cytoplasm of tumour cells (Fig. 1b). In many cases strong nucleolar staining was also detected in the nuclei (Fig. 1c). Interestingly in a small number of tumour samples (3/65) only cytoplasmic microcephalin staining was detected (Fig. 1d).

Dichotomous analysis in the training set, identified low microcephalin expression in 22/65 (34%) samples. Fig 1e shows a grade 3 invasive ductal carcinoma showing loss of microcephalin expression. In the validation set, 93/319 (29%) of cases showed low microcephalin expression. Low and high microcephalin expression in TMA samples with IDC are shown in Fig. 1 (f and g). The adjacent normal epithelium which was used as an internal control showed high microcephalin nuclear staining in the majority of cases.

Relation of microcephalin expression to histological parameters

In each patient sample, the level of microcephalin expression was correlated with the severity of the disease. Continuous data analysis of the validation set identified a highly significant association between low expression of microcephalin and high tumour grade ($p < 0.003$). Mean microcephalin expression was 61% in grade 2 tumours compared to 50% in the high grade 3 tumours. Microcephalin expression did not differ significantly in the distribution of other clinicopathological variables. Similar results were obtained after dichotomous analysis into low and high microcephalin expression however the statistical significance was reduced (Table 2).

Association of microcephalin expression with biomarkers

Continuous data analysis of microcephalin nuclear expression identified significant correlations with the ER, PR and HER2. Microcephalin expression was significantly associated with the negative expression of ER and PR ($p < 0.001$). Mean microcephalin expression was 45.2% in ER negative cases compared to 57% in positive cases. Similarly mean microcephalin expression was 46.5% in PR negative cases compared to 59% in positive cases. In the triple negative phenotype (ER, PR, and HER2) mean microcephalin expression was 55.8% compared to

43.7% ($p < 0.004$). Conversely mean microcephalin expression was significantly lower (43.8) in HER2 positive tumours than HER2 negative ones (55.4%) ($p < 0.034$).

Continuous data analysis of microcephalin nuclear expression identified a significant difference with absent or reduced nuclear BRCA1 staining ($p < 0.001$). Mean microcephalin expression was 30.6% in BRCA1 negative cases compared to 52.7% in positive cases with reduced BRCA staining and 63.3% with strong nuclear BRCA1 staining. No significant correlation was identified between microcephalin expression and cytoplasmic BRCA1 staining or the basal markers CK14, CK5/6 and EGFR. Similar results were obtained when the data was dichotomized into low and high microcephalin expression however the statistical significance was reduced. The correlation of microcephalin expression and other biomarkers is shown in Table 3.

Univariate and Multivariate analyses

In the validation set, continuous data analysis of microcephalin expression identified no correlation with BCSS. However after dichotomization a weak association with reduced microcephalin expression and shorter BCSS was identified. In patients with low microcephalin expression the mean BCSS was 146.6 months (95%CI: 128-164) compared to 154.8 months (95%CI: 143.9-165.7) in patients with high microcephalin expression ($p = 0.103$) (Fig. 2a). This reached statistical significance in invasive ductal carcinomas alone (HR = 0.6, 95%CI: 0.4-1, $p = 0.05$) (Table 4). Mean BCSS of patients with low expression of microcephalin was 128.7 months compared to 146.7 months in patients with high microcephalin expression (Fig. 2b). There was no significant association between microcephalin expression and DFS (Fig. 3).

A multivariate Cox regression model was carried out to examine the independent prognostic impact of microcephalin expression on BCSS and DFS in ductal carcinomas in relation to other established clinicopathological and tumour-biological factors such as tumour grade, size, lymph node status, NPI, vascular invasion, adjuvant hormonal and chemotherapy. In a systematic model, microcephalin, together with lymph node involvement and tumour size were independent predictors of BCSS in invasive ductal carcinomas alone (HR = 0.6, 95%CI: 0.4-1, $p = 0.037$) (Table 4).

In the small cohort of patients treated with chemotherapy (59) the mean BCSS of patients with tumours expressing microcephalin was 145 months compared to 112 months in patients with tumours having reduced microcephalin expression. This difference however was not statistically significant. No significant correlation was identified between microcephalin expression and response to hormone therapy.

Discussion

In this study, we have undertaken the first large scale investigation of the expression of the MCPHI protein microcephalin in breast cancer samples. In normal breast duct epithelial cells nuclear and nucleolar microcephalin staining was observed. The nuclear localization is consistent with the role of microcephalin in DNA repair, checkpoint and transcription regulation. Nucleolus localization is often seen in DNA repair proteins such as BRCA1, which are stored in the nucleolus prior to relocalization to DNA damage foci when required [23]. In the tumour cells nuclear (including nucleolar) and/or cytoplasmic microcephalin staining was identified. Interestingly in a small number of high grade tumour samples only cytoplasmic microcephalin staining was detected.

Initially, we recorded low microcephalin expression in 34% (22/65) of the training set. Our larger validation set also showed a reduction in microcephalin expression of 29% (93/319). Our results agree with another studies which report reduced MCPHI DNA copy number in 72% (39/54) of breast cancer cell lines and also reported reduced microcephalin staining in 7/10 breast cancer samples [5,24].

Our results revealed that low microcephalin expression was significantly associated with high tumour grade in our validation set. In the validation set, reduction of microcephalin expression was weakly associated with shorter BCSS. This association with shorter BCSS was even more obvious among invasive ductal carcinomas, which is the main histological subtype of breast cancer with a highly variable prognosis and, therefore, more accurate prognostic factors are needed especially for this histological breast cancer subtype. The multivariate Cox regression model showed that microcephalin levels and lymph node involvement and tumour size are independent predictors of BCSS in invasive ductal breast cancers. This finding is similar to a recent breast cancer study which identified an association between decreased MCPHI transcript levels and reduced time to metastasis [5].

In this study, low microcephalin immunohistochemical expression correlated with the triple negative phenotype and conversely positive HER-2 status. Morphologically the triple negative and HER2 positive cancers tend to be aggressive high grade cancers. Since reduced microcephalin expression is significantly associated with increasing tumour grade it is likely that microcephalin expression may be a marker of poor differentiation rather than of a particular subtype.

Interestingly reduced microcephalin expression also correlated with no or reduced nuclear BRCA1 expression. This finding is in agreement with previous DNA repair studies have reported MCPHI siRNA knockdown causing reduced BRCA1 expression in a range of cell lines [7, 8, 10, 11]. To our knowledge this is

the first study to confirm the association between reduced microcephalin and BRCA1 expression in breast tumour samples. A potential explanation for this association is that microcephalin is a positive regulator of *BRCA1* due to its interaction with the transcription factor E2F1 on the promoter of the *BRCA1* gene increasing transcription [10], consequently reduced microcephalin expression would result in reduced *BRCA1* expression. Many sporadic breast cancers many show decreased BRCA1 expression and an aggressive BRCA1-like phenotype, however this can only be partially accounted for by methylation, mutations and deletions [16, 25], reduced expression of positive regulators like microcephalin could be another mechanism.

Recently the use of Parp inhibitors has proved very effective in the treatment of patients with breast and ovarian cancers containing *BRCA1/2* mutations [26]. The Parp-1 enzyme plays an important role in base excision DNA repair, when this function is inhibited in cells with compromised homologous recombination DNA repair, such as *BRCA1/2* deficient cells, the cells are more sensitive to the increased DNA damage and apoptosis occurs [26]. Potentially Parp inhibitors may prove useful in treating microcephalin deficient cancers due to the association between loss of microcephalin expression and decreased BRCA1 expression and the requirement for microcephalin in BRCA2/RAD51 mediated repair [6].

Reduced expression of microcephalin was associated with aggressive high grade tumours and poor patient outcome particularly in invasive ductal breast cancers. Potentially reduced expression of the DNA repair protein microcephalin could cause resistance to chemotherapy. Unfortunately, the number of patients used in this study was not large enough to determine whether or not microcephalin had an effect on chemotherapy response. However the 33 months lower survival in patients with low microcephalin expression identified in our study indicates further studies are warranted. In addition to regulating BRCA1 expression through binding E2F1 microcephalin also alters the expression of p73, caspase 3 and 7, CHK1 and RAD51 which may also influence response to chemotherapy [10].

Recently two BRIT1/MCPH1 knockout mice models have been developed. In one deregulated mitosis and premature chromosome condensation was identified and in the other deficient DNA repair [27, 28]. While to date no signs of cancer development have been detected in either model, Liang *et al* reported that when the DNA repair deficient BRIT1/MCPH1 mice were crossed with p53 knockout mice this resulted in a significant increase in susceptibility to cancer. The authors also reported that low dosages of irradiation induced breast tumors in mice with conditional knockout of BRIT1 in the mammary glands but not in control littermates [28]. Our results identifying reduced microcephalin expression in HER2 amplified and BRCA1 negative breast

cancers suggest it would be very interesting to cross the BRIT1/MCPH1 deficient mice with amplified HER2 and BRCA1 mice to determine the influence of microcephalin expression on tumour development.

Further large confirmatory studies are warranted to determine the potential use of microcephalin expression assessment in clinical practice in breast and other cancer types. In summary, reduction of microcephalin expression was identified in almost a third of breast carcinoma cases particularly in higher grade tumours and BRCA1 negative cases. Although reduced microcephalin expression was identified in triple negative and HER2 positive cancers, this association may simply reflect the aggressive nature of these subtypes. Multivariate analysis which identified microcephalin as an independent prognostic factor for BCSS provides clinical evidence to support the idea that microcephalin is a tumour suppressor gene, which may prove to be a new prognostic biomarker in aggressive breast cancers.

Acknowledgements

This study was supported by grants from Yorkshire Cancer Research grant number L317 (SMB & VS) and the Breast Cancer Campaign 2007NovPR53 (SMB & VS). MK is supported by a scholarship from the Egyptian government. RA is supported by a scholarship from the Saudi Arabian government.

References

1. Jackson AP, Eastwood H, Bell SM et al (2002) Identification of Microcephalin, a protein implicated in determining the size of the human brain. *Am. J. Hum. Genet.* 71:136-142
2. Lin S-Y, Elledge SJ (2003) Multiple tumor suppressor pathways negatively regulate telomerase, *Cell* 113:881-88
3. Koonin EV, Altschul SF, Bork P (1996) BRCA1 protein products... Functional motifs. *Nat. Genet.* 13(3):266-268
4. Wood JL, Singh N, Mer G, Chen J (2007) MCPH1 functions in a H2AX-dependent but MDC1 independent pathway in response to DNA damage. *J Biol Chem.* 30:282(48):35416-3523

5. Ria R, Dai H, Multani AS et al (2006) BRIT1 regulates early damage response, chromosomal integrity and cancer. *Cancer Cell* 10(2):145-157
6. Wu X, Mondal G, Wang X et al (2009) Microcephalin regulates BRCA2 and Rad51-associated DNA double-strand break repair. *Cancer Res* 69:5531-5536
7. Xu X, Lee J, Stern DF (2004) Microcephalin is a DNA damage response protein involved in regulation of CHK1 and BRCA1. *J Biol Chem* 279:34091-34094
8. Lin SY, Rai R, Li K et al (2005) BRIT1/MCPH1 is a DNA damage responsive protein that regulates the Brca1-Chk1 pathway, implicating checkpoint dysfunction in microcephaly. *Proc Natl Acad Sci USA* 102:15105-15109
9. Tibelius A, Marhold J, Zentgraf H et al (2009) Microcephalin and pericentrin regulate mitotic entry via centrosomal-associated Chk1. *J Cell Biol* 185(7):1149-1157
10. Yang SZ, Lin FT, Lin WC (2008) MCPH1/BRIT1 cooperates with E2F1 in the activation of checkpoint, DNA repair and apoptosis. *EMBO Rep* 9:907-915
11. Lin S-Y, Liang Y, Li K (2010) Multiple roles of BRIT1/MCPH1 in DNA damage response, DNA repair and cancer suppression. *Yonsei Med J* 51(3):295-301
12. Qin, L-X (2002) Chromosomal aberrations related to metastasis of human solid tumours. *World J Gastroenterol.* 8(5):769-776
13. Sorlie T, Tibshirani R, Parker J et al (2003) Repeated observation of breast cancer sub types in independent gene expression data sets. *Pro Natl Acad Sci USA* 11:5678-5685

14. Abd El-Reihm DM, Ball G, Pinder SE et al (2005) High-throughput protein expression analysis using tissue microarray technology of a large well-characterised series identifies biologically distinct classes of breast cancer confirming recent cDNA expression analyses. *Int J Cancer* 116:340-350
15. Rakha EA, El Saved ME, Green AR et al (2007) Breast carcinoma with basal differentiation: a proposal for pathology definition based on basal cytokeratin expression *Histopathology* 50(4):434-438
16. Turner NC, Reis-Fiho JS (2006) Basal-like breast cancer and the BRCA1 phenotype. *Oncogene* 25:5846-5853
17. Foulks WD, Stefansson IM, Chappuis PO (2004) Germline BRCA1 mutations and a basal epithelial phenotype in breast cancer. *J Natl Cancer Inst* 1:95(19):1482-1485
18. Rakha EA, Reis-Filho JS, Ellis IO (2008) Basal-like breast cancer: A critical review. *J Clin Oncol* 26(15):2586-2581
19. Rakha EA, El-Sheikh SE, Kandil MA, El-Sayed ME, Green AR, Ellis IO (2008) Expression of BRCA1 protein in breast cancer and its prognostic significance. *Hum Path* 39:857-865
20. McShane LM, Altman DG, Sauerbrei W, Taube SE, Gion M, Clark GM (2005) Reporting recommendations for tumour marker prognostic studies. *J Clin Oncol* 23(36):9067-9072
21. Breslow NE, Day NE (1987) Fitting models to continuous data. In: *Statistical Methods in Cancer Research Vol 2: The Design and Analysis of Cohort Studies*, ed. Breslow NE and Day NE, 199-299. IARC Scientific Publications, Lyon
22. Altman DG, Lyman GH (1998) methodological challenges in the evaluation of prognostic factors in breast cancer. *Breast Cancer Res Treat* 52:289-303

23. Dejmek J, Iglehart JD, Lazaro JB (2009) DNA-dependent protein kinase (DNA-PK) dependent cisplatin induced loss of nucleolar facilitator of chromatin transcription (FACT) and regulation of cisplatin sensitivity by DNA-PK and FACT. *Mol Cancer Res* 7(4):581-591
24. Rai R, Phadnis A, Haralkar S et al (2008) Differential regulation of centrosome integrity by DNA damage response proteins. *Cell cycle* 7:(14) 2225-2233
25. Mueller CR, Roskelley CD (2003) Regulation of BRCA1 expression and its relationship to sporadic breast cancer. *Breast Cancer Res* 5(1):45-52
26. Fong PC, Boss DS, Yap TA et al (2009) Inhibition of poly(ADP-ribose) polymerase in tumours from BRCA mutation carriers. *N Eng J Med* 361:123-134
27. Trimborn M, Ghani M, Walther DJ et al (2010) Establishment of a mouse model with misregulated chromosome condensation due to defective Mcph1 function. *PLoS One* 5(2):e9242
28. Liang Y, Gao H, Lin SY et al (2010) BRIT1/MCPH1 is essential for mitotic and meiotic recombination DNA repair and maintaining genomic stability in mice. *PLoSGenet* 6:e1000826

Figure legends

Fig. 1 Immunohistochemical analysis of microcephalin expression in normal and malignant breast tissue samples

- a) Normal mammary ducts showing strong nuclear expression of microcephalin (x20).
- b) Grade 1 invasive ductal carcinoma of no special type (NST) showing nuclear and cytoplasmic microcephalin staining (x20).
- c) Invasive ductal carcinoma NST showing nucleolar expression of microcephalin (arrows) (x40).
- d) Grade 3 invasive ductal carcinoma NST with no nuclear microcephalin expression. Cytoplasmic staining is however present (x40).
- e) Grade 3 invasive ductal carcinoma NST, with no microcephalin expression (x40).
- f) Grade 1 invasive ductal carcinoma TMA showing high level microcephalin expression (x20).
- g) Grade 3 invasive ductal carcinoma TMA showing no nuclear microcephalin expression and low level cytoplasmic staining (x20)

Fig. 2 Comparison of breast cancer specific survival (BCSS) based on microcephalin status

- a) whole patient series b) ductal breast cancer patients only

Fig. 3 Comparison of disease free survival (DFS) based on microcephalin status

- a) whole patient series b) ductal breast cancer patients only

Table 1 Patients' characteristics

Variables	Validation set n = 319 (%)
Age	
Mean	53
Range	28-70
Age distribution	
<50	117 (36.7)
>50	202 (63.3)

Tumour size (mm)	
Mean	20
Range	2.7-100
Size distribution (mm)	
<20	158 (49.7)
>20	160 (50.3)
Tumour grade	
G1	58 (18.2)
G2	97 (30.5)
G3	163 (51.3)
Lymph node status	
1	188 (59.1)
2	97 (30.5)
3	33 (10.4)
Vascular invasion (VI)	
No	174 (54.9)
Probable	27 (8.5)
Definite	116 (36.6)
Nottingham Prognostic Index (NPI)	
Good	75 (23.6)
Moderate	193 (60.7)
Poor	50 (15.7)
Histological tumour type	
Ductal/NST	191 (61)
Lobular	30 (9.6)
Tubular and Tubular mixed	62 (19.9)
Medullary	7 (2.2)
Other special types ^a	4 (1.3)
Mixed ^b	19 (5.5)
Distant metastases	
No	207 (65.1)
Positive	111 (34.9)
Recurrence	
No	164 (52.3)
Yes	150 (47.7)
Endocrine therapy	
Not given	187 (59)

Given	120 (38)
Unknown	12 (3)
Chemotherapy	
Not given	239 (76)
Given	68 (21)
Unknown	12 (3)

^a Includes mucoid and invasive papillary carcinoma.

^b Includes ductal/NST mixed with lobular or special types.

Table 2 Correlation of microcephalin expression with clinicopathological data in the validation set

Parameter	Microcephalin expression				
	Continuous		Categorised ^a		
	Mean (%)	p value	High n (%)	Low n (%)	p value
Age					
<50	56	0.631	84 (37)	33 (35)	0.799
>50	53		141 (63)	61 (65)	
Tumour size (mm)					
<20	56.7	0.197	116 (52)	42 (45)	0.248
>20	52.2		108 (48)	52 (55)	
Tumour grade					
G1	54.8	G1 vs G2 0.282	40 (18)	18 (19)	0.311
G2	61.1	G2 vs G3 0.003	74 (33)	23 (24)	
G3	50.4	G1\2 vs G3 0.006	110 (49)	53 (56)	
Lymph node stage					
1	53.2	1 vs 2 0.645	126 (56)	61 (65)	0.305
2	55.8	1 vs 3 0.754	72 (32)	26 (28)	
3	57.9	2 vs 3 0.989	26 (12)	7 (7)	
Vascular invasion (VI)					
No	54.3	N vs P 0.547	120 (54)	54 (57.5)	0.820

Probable	51	N vs D	0.835	19 (8.5)	8 (8.5)	
Definite	55.6	P vs D	0.431	84 (37.5)	32 (34)	
Nottingham Prognostic Index						
Good	56.2	G vs M	0.696	52 (23)	22 (24)	0.737
Moderate	55.1	G vs P	0.145	139 (63)	55 (59)	
Poor	49.4	M vs P	0.231	33 (14)	17 (18)	
Histological tumour type						
Ductal/NST	51.8	^d D vs L	0.019	130 (57)	61 (72)	0.413
Lobular	63.6	L vs T	0.090	23 (10)	7 (8)	
Tubular and Tubular mixed	54.6	T vs D	0.200	51 (22)	11 (13)	
Medullary	44.7			7 (3)	0 (0)	
Other special types ^b	53.3			3 (1)	1 (1)	
Mixed ^c	46.6			14 (6)	5 (6)	
Distant metastases						
No	53.6		0.627	144 (64)	63 (67)	0.700
Positive	56.3			80 (36)	31 (23)	
Recurrence						
No	52.4		0.266	112 (50.5)	52 (57)	0.385
Yes	56.9			110 (49.5)	40 (43)	

^a A 35% cut off was used to categorize microcephalin expression into low and high groups.

^b Includes mucoid and invasive papillary carcinoma.

^c Includes ductal/NST mixed with lobular or special types.

^d Statistical analysis was only performed for most common sub types

P≤0.05 is significant and are shown in bold

Table 3 Correlation of microcephalin expression with other biomarkers

Parameter	Microcephalin Expression				
	Continuous		Categorised ^a		
	Mean (%)	p value	High (%)	Low (%)	p value
ER					
Negative	45.2	0.001	55 (27)	33 (35)	0.117

PR	Positive	57			152 (73)	60 (65)	
	Negative	46.5	0.001		80 (39)	49 (54)	0.018
HER2	Positive	59			125 (61)	42 (46)	
	Negative	55.4	0.034		184 (90)	72 (82)	0.199
Triple negative	Positive	43.8			22 (10)	16 (18)	
	Negative	55.8	0.004		173 (84)	70 (76)	0.126
EGFR	Positive	43.7			33 (16)	22 (24)	
	Negative	54.65	0.863		149 (79)	61(77)	0.769
CK5/6	Positive	53.37			40 (21)	18 (23)	
	Negative	54.87	0.521		185 (87)	75(82)	0.314
CK14	Positive	51.18			28 (13)	16 (18)	
	Negative	54.13	0.535		178 (86)	78 (85)	0.858
BRCA1 (nuclear)	Positive	50.9			30 (14)	14 (15)	
	Negative	30.6	0.001	N vs R	15 (8)	23 (29)	<0.001
	Reduced	52.7	0.010	R vs S	72 (39)	31 (39)	
BRCA1 (cytoplasmic)	Strong	63.3	<0.001	N vs S	101 (54)	25 (32)	
	Negative	57.6	0.413		124 (85)	57 (47)	0.323
	Positive	53.1			22 (15)	64 (53)	

^aA 35% cut off was used to categorize microcephalin expression into low and high groups.

P≤0.05 is significant and are shown in bold

Table 4 Univariate and multivariate analysis of breast cancer specific survival in the validation set (a) the whole patient series and (b) ductal breast cancer patients only

Variable	Univariate (p value)	HR (95%CI)	Multivariate (p value)	HR (95%CI)
----------	-------------------------	------------	---------------------------	------------

a) Whole patient series

Grade	0.009	1.4(1.1-1.8)	0.004	1.7(1.2-2.6)
Lymph node status	< 0.001	1.8(1.4-2.3)	< 0.001	2.3(1.5-3.5)
Size	0.001	2(1.4-2.9)	0.001	1.6(1-2.2)
NPI	< 0.001	1.9(1.45-2.6)	0.335	0.7(0.4-1.3)
Vascular invasion	< 0.001	1.3(1-1.6)	0.872	1(0.7-1.3)
Chemotherapy	0.771	1(0.7-1.7)	0.007	0.4(0.2-0.8)
Endocrine therapy	0.248	1.2(0.9-1.8)	0.131	0.7(0.4-1)
Microcephalin expression ^a	0.103	0.74(0.5-1.1)	0.064	0.7(0.5-1)

b) Ductal breast cancer patients only

Grade	0.389	1.1(0.7-1.6)	0.381	1.3(0.7-2.3)
Lymph node status	< 0.001	2.2(1.6-3)	< 0.001	3.3(2-5.3)
Size	0.004	1.9(1.2-3)	0.005	1.5(1.1-2.1)
NPI	< 0.001	2(1.3-3)	0.337	0.7(0.33-1.5)
Vascular invasion	0.582	1(0.8-1.5)	0.125	0.75(0.5-1.)
Chemotherapy	0.712	0.9(0.55-1.5)	0.022	0.4(0.2-0.9)
Endocrine therapy	0.438	1.2(0.8-1.9)	0.339	0.75(0.4-1.3)
Microcephalin expression ^a	0.052	0.6(0.4-1)	0.037	0.6(0.4-1)

Multivariate analysis (a): total n=275, deceased=116, censored=159, missing=48

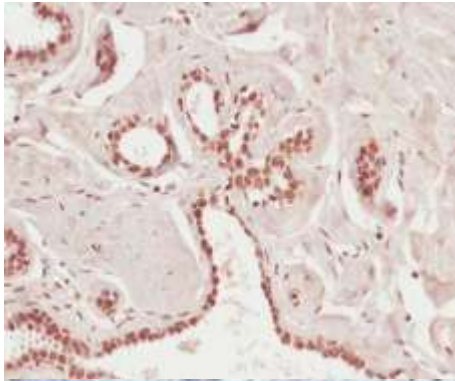
(b): total n=169, deceased=80, censored=89, missing=22

^aA 35% cut off was used to dictomize microcephalin expression into low and high groups

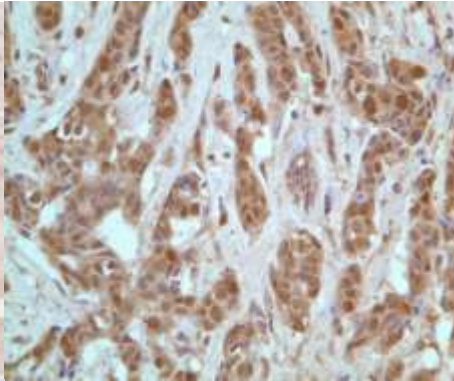
P≤0.05 is significant and are shown in bold

Figure 1

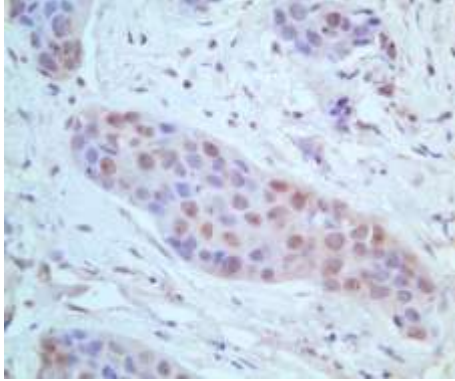
a)



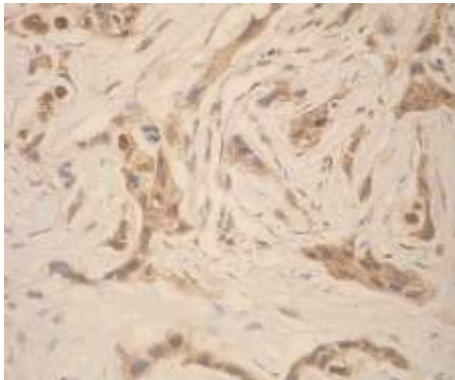
b)



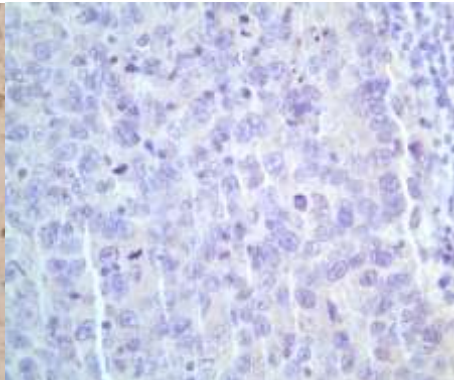
c)



d)



e)



f)



g)

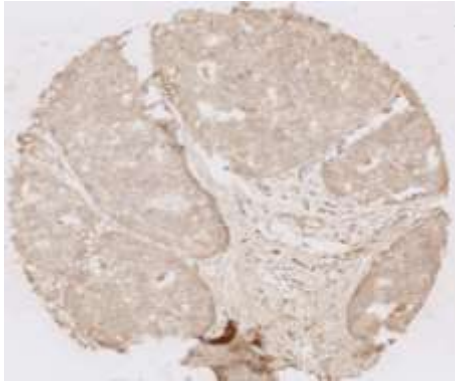


Figure 2

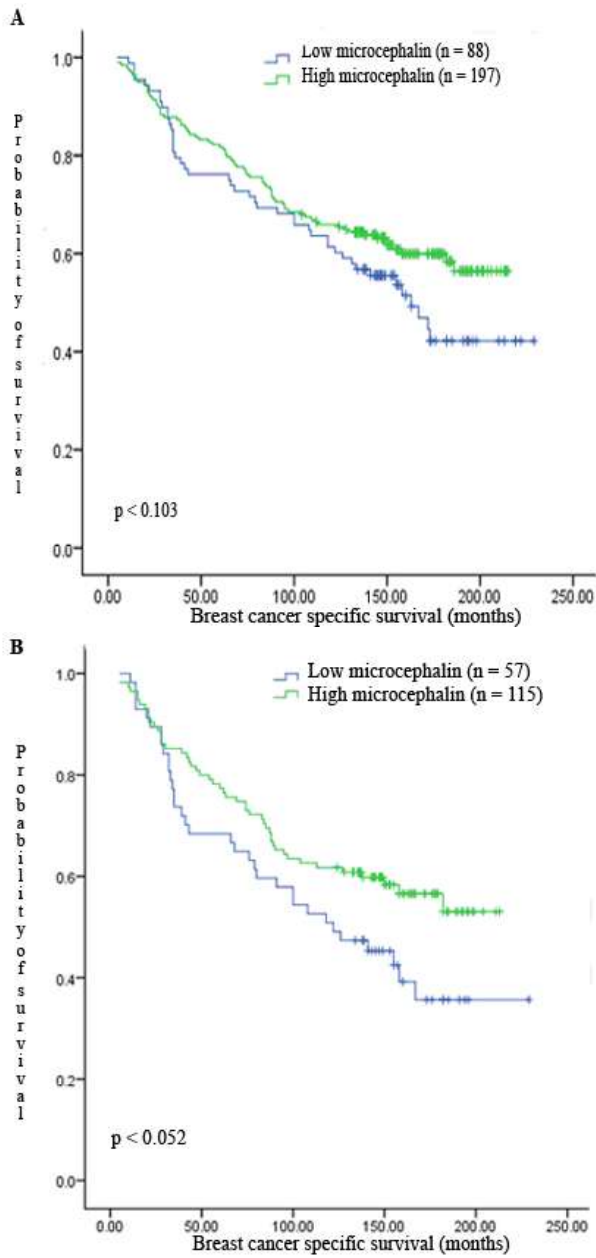


Figure 3

