



**HAL**  
open science

## High activity of indoleamine 2,3-dioxygenase is associated with renal insufficiency in Puumala hantavirus induced nephropathia epidemica

Tuula Outinen, Satu Mäkelä, Ilpo Ala-Houhala, Heini Huhtala, Mikko Hurme, Daniel Libraty, Simo S Oja, Ilkka Pörsti, Jaana Syrjänen, Antti Vaheri, et al.

### ► To cite this version:

Tuula Outinen, Satu Mäkelä, Ilpo Ala-Houhala, Heini Huhtala, Mikko Hurme, et al.. High activity of indoleamine 2,3-dioxygenase is associated with renal insufficiency in Puumala hantavirus induced nephropathia epidemica. *Journal of Medical Virology*, 2011, 83 (4), pp.731. 10.1002/jmv.22018 . hal-00614676

**HAL Id: hal-00614676**

**<https://hal.science/hal-00614676>**

Submitted on 15 Aug 2011

**HAL** is a multi-disciplinary open access archive for the deposit and dissemination of scientific research documents, whether they are published or not. The documents may come from teaching and research institutions in France or abroad, or from public or private research centers.

L'archive ouverte pluridisciplinaire **HAL**, est destinée au dépôt et à la diffusion de documents scientifiques de niveau recherche, publiés ou non, émanant des établissements d'enseignement et de recherche français ou étrangers, des laboratoires publics ou privés.



**High activity of indoleamine 2,3-dioxygenase is associated with renal insufficiency in Puumala hantavirus induced nephropathia epidemica**

Journal:	<i>Journal of Medical Virology</i>
Manuscript ID:	JMV-10-1916.R1
Wiley - Manuscript type:	Research Article
Date Submitted by the Author:	20-Sep-2010
Complete List of Authors:	<p>Outinen, Tuula; Tampere University Hospital, Internal Medicine  Mäkelä, Satu; Tampere University Hospital, Internal Medicine  Ala-Houhala, Ilpo; Tampere University Hospital, Internal Medicine  Huhtala, Heini; University of Tampere, Tampere School of Public Health  Hurme, Mikko; University of Tampere, Medical School  Libraty, Daniel; University of Massachusetts Medical School, Center for Infectious Disease and Vaccine Research  Oja, Simo; Tampere University Hospital, Pediatrics  Pörsti, Ilkka; University of Tampere, Medical School  Syrjänen, Jaana; Tampere University Hospital, Internal Medicine  Vaheri, Antti; University of Helsinki, Virology  Mustonen, Jukka; University of Tampere, Medical School</p>
Keywords:	Puumala hantavirus, nephropathia epidemica, kynurenine, tryptophan, indoleamine 2,3-dioxygenase

SCHOLARONE™  
Manuscripts

1  
2  
3  
4 1 **High activity of indoleamine 2,3-dioxygenase is associated with renal**  
5  
6 2 **insufficiency in Puumala hantavirus induced nephropathia epidemica**  
7  
8

9  
10 3 Tuula K Outinen, M.D.<sup>1</sup>, Satu M Mäkelä, M.D., Ph.D.<sup>1,2</sup>, Ilpo O Ala-Houhala, M.D., Ph.D.<sup>1,2</sup>, Heini  
11  
12 4 SA Huhtala, M.Sc.<sup>3</sup>, Mikko Hurme, M.D., Ph.D.<sup>2,4</sup>, Daniel H Libraty<sup>5</sup>, Simo S Oja, M.D., Ph.D.<sup>6</sup>,  
13  
14 5 Ilkka H Pörsti, M.D., Ph.D.<sup>1,2</sup>, Jaana T Syrjänen, M.D., Ph.D.<sup>1,2</sup>, Antti Vaheri, M.D., Ph.D.<sup>7</sup>, and  
15  
16 6 Jukka T Mustonen, M.D., Ph.D.<sup>1,2</sup>  
17  
18

19  
20 7  
21  
22 8 **Institutions:** <sup>1</sup>Department of Internal Medicine, Tampere University Hospital, Tampere, Finland;  
23  
24  
25 9 <sup>2</sup>Medical School, University of Tampere, Tampere, Finland; <sup>3</sup>Tampere School of Public Health,  
26  
27 10 University of Tampere, Tampere, Finland; <sup>4</sup>Laboratory Centre, Tampere University Hospital,  
28  
29 11 Tampere, Finland; <sup>5</sup>Center for Infectious Disease and Vaccine Research, University of  
30  
31 12 Massachusetts Medical School, Worcester, MA, USA; <sup>6</sup>Department of Pediatrics, Tampere  
32  
33 13 University Hospital, Tampere, Finland; <sup>7</sup>Department of Virology, Haartman Institute, University of  
34  
35 14 Helsinki, Helsinki, Finland  
36  
37  
38  
39  
40  
41  
42

43 16 **Running Head:** IDO in Puumala Hantavirus Infection  
44  
45  
46  
47

48 18 **Corresponding author:**

49  
50 19 Tuula Outinen, M.D.

51  
52 20 Tampere University Hospital

53  
54 21 Department of Internal Medicine

55  
56 22 P.O. Box 2000, FI-33521 Tampere, Finland

57  
58 23 Phone: +358 3 311611. Fax: +358 3 31164333.

59  
60 24 E-mail: [Tuula.Outinen@uta.fi](mailto:Tuula.Outinen@uta.fi)

1  
2  
3 1 **Abstract**  
4  
5  
6 2  
7  
8  
9 3 Nephropathia epidemica (NE) is a hemorrhagic fever with renal syndrome caused by Puumala  
10  
11 4 hantavirus. The severity of NE varies greatly. The aim of the present study was to evaluate whether  
12  
13 5 serum indoleamine 2,3-dioxygenase (IDO) activity is associated with the severity of NE. A  
14  
15 6 prospectively collected cohort of 102 consecutive patients with acute serologically confirmed NE  
16  
17 7 was examined. Serum kynurenine, tryptophan, creatinine, CRP, and blood cell count were measured  
18  
19 8 for up to five consecutive days after admission. The kynurenine to tryptophan (kyn/trp) ratio  
20  
21 9 reflecting IDO activity was calculated. A maximum kyn/trp ratio >202  $\mu\text{mol}/\text{mmol}$  had a sensitivity  
22  
23 10 of 85% and a specificity of 75% for detecting maximum serum creatinine values >250  $\mu\text{mol}/\text{l}$  by  
24  
25 11 receiver operating characteristic (ROC) analysis. A maximum kyn/trp ratio >202  $\mu\text{mol}/\text{mmol}$  (high  
26  
27 12 IDO level) was also associated with other parameters reflecting the severity of the disease and renal  
28  
29 13 impairment. Patients with high IDO levels had higher maximum serum creatinine (379 vs. 102  
30  
31 14  $\mu\text{mol}/\text{l}$ ,  $P<0.001$ ), plasma C-reactive protein (104.1 vs. 72.1 mg/l,  $P=0.029$ ), and blood leukocyte  
32  
33 15 values (11.9 vs. 9.0  $\times 10^9/\text{l}$ ,  $P<0.001$ ) compared to patients with kyn/trp ratio  $\leq 202$   $\mu\text{mol}/\text{mmol}$ .  
34  
35 16 They also had lower minimum urinary output (1100 vs. 1900 ml/day,  $P<0.001$ ) and longer hospital  
36  
37 17 stays (8 vs. 5 days,  $P<0.001$ ). In conclusion, high serum IDO activity was associated with increased  
38  
39 18 disease severity and renal impairment in NE.  
40  
41  
42  
43  
44  
45  
46  
47  
48  
49  
50 20 **Keywords:** Puumala hantavirus, nephropathia epidemica, kynurenine, tryptophan, indoleamine 2,3-  
51  
52 21 dioxygenase  
53  
54  
55  
56  
57  
58  
59  
60



1 patients with NE [Kanerva et al., 1996; Linderholm et al., 1992; Lähdevirta, 1971; Mustonen et al.,  
2 1994a; Paakkala et al., 2004].

3 Indoleamine 2,3-dioxygenase (IDO) is an enzyme catalyzing the first and rate-limiting step in the  
4 major pathway of tryptophan (trp) catabolism to kynurenine (kyn) and its derivatives [Mellor,  
5 2005]. IDO is expressed widely in various immune cells, including monocyte-derived macrophages  
6 and dendritic cells [Mellor and Munn, 2004]. It is also expressed in other types of cells, such as  
7 certain tumour-cells, fibroblasts, and renal tubular epithelial cells (TEC) [Burke et al., 1995; Jalili et  
8 al., 2007; Mohib et al., 2007]. Interferon (IFN)- $\gamma$  is the strongest inducer of IDO [Mellor and Munn,  
9 2004]. Increased IDO activity results in the depletion of trp and this can lead to inhibition of T-cell  
10 responses and proliferation and thus to immunosuppression [Hwu et al., 2000; Mellor et al., 2002].  
11 Depletion of trp is also thought to be the mechanism by which IDO activity inhibits the replication  
12 of various bacteria, intracellular parasites, and viruses [Takikawa, 2005].

13 In the present study, we investigated whether serum IDO concentrations are associated with  
14 disease severity and renal insufficiency in Puumala hantavirus-induced HFRS.

## 17 **Materials and Methods**

### 18 **Patients**

19  
20 The study cohort consisted of 102 prospectively identified consecutive patients with acute NE  
21 treated at Tampere University Hospital, Finland, between September 2000 and January 2008. The  
22 median patient age was 46 (range 22–77) years, and 69 (68%) were males.

23 Thirty-eight (37%) patients had one or more of the following diseases before NE: essential  
24 hypertension in 12, dyslipidemia in eight, arthritis rheumatoides and atrial fibrillation/fluctuation in  
25 four, and coronary artery disease and bronchial asthma in three patients; hypothyreosis, chronic

1  
2  
3  
4  
5  
6  
7  
8  
9  
10  
11  
12  
13  
14  
15  
16  
17  
18  
19  
20  
21  
22  
23  
24  
25  
26  
27  
28  
29  
30  
31  
32  
33  
34  
35  
36  
37  
38  
39  
40  
41  
42  
43  
44  
45  
46  
47  
48  
49  
50  
51  
52  
53  
54  
55  
56  
57  
58  
59  
60

1 inflammatory bowel disease, diabetes mellitus, psychiatric disorder, migraine and hyperplasia of the  
2 prostate in two patients; sick sinus syndrome treated with pacemaker, osteoporosis, psoriasis,  
3 Sjögren's syndrome, mitral valve disease, epilepsy, fibromyalgia, sarcoidosis, multiple sclerosis,  
4 polyneuropathia, chronic gastritis, transient ischaemic attack, congenital hearing impairment,  
5 operated atrial septal defect, and operated melanoma in one patient each.

6 The diagnosis of acute PUUV infection was serologically confirmed in all cases [Vapalahti et al.,  
7 1996]. All subjects gave informed consent before participation and the study was approved by the  
8 Ethics Committee of Tampere University Hospital and the University of Massachusetts Medical  
9 School.

#### 10 11 Study protocol

12  
13 All 102 patients were studied during the acute phase of NE. A detailed past and current medical  
14 history was obtained, and a careful physical examination was performed. Blood samples to analyze  
15 serum trp and kyn, creatinine, CRP, and blood cell count were collected for up to five consecutive  
16 days after hospitalization. Other blood samples were taken according to the clinical needs of the  
17 patient. The highest and the lowest value of each patient of the various variables measured during  
18 hospitalization were designated as the maximum and minimum values. In this study, we have  
19 defined significant renal insufficiency as a serum creatinine value exceeding 250  $\mu\text{mol/l}$ . Minimum  
20 urinary output was defined as low if it was equal or lower than the median value in the study  
21 population ( $\leq 1440$  ml/day) and high if it was  $>1440$  ml/day.

#### 22 23 Methods

1 All blood specimens were obtained between 7:30-9:30 in the morning. Plasma CRP was analyzed  
2 by the Roche Diagnostics CRP method using Cobas Integra analyzer (F. Hoffman-La Roche Ltd,  
3 Basel, Switzerland). Blood cell count was completed by hematological cell counters by Bayer.  
4 Serum creatinine was determined by Cobas Integra analyzer.

5 The rate of trp degradation reflects the IDO enzyme activity, and IDO level can thus be measured  
6 by determining the ratio of kynurenine to tryptophan (kyn/trp) in sera [Schrocksadel et al., 2006].  
7 Serum trp and kyn concentrations were measured afterwards from frozen samples by reverse-phase  
8 high-performance liquid chromatography (HPLC), as previously described [Laich et al., 2002]. Trp  
9 was separated with a Shimadzu liquid chromatograph LC-10AD VP (Shimadzu Co, Kyoto, Japan)  
10 using a 50-mm BDS Hypersil C18 5  $\mu\text{m}$  column (Thermo Electron Co, Bellefonte, PA, USA). It  
11 was monitored by fluorescence with a Shimadzu RF-10A XL detector at 266 nm excitation and 366  
12 nm emission wavelengths. Kyn was separated with a Hewlett Packard 1100 liquid chromatograph  
13 (Palo Alto, CA, USA) using a Merck LiChroCart 55-4150 mm cartridge containing a Purospher  
14 STAR RP-18 3  $\mu\text{m}$  column (Merck Co, Darmstadt, Germany). It was determined by ultraviolet  
15 absorption at 360-nm wavelength with a Hewlett Packard G13144 detector. The kyn/trp ratio was  
16 calculated by relating concentrations of kyn to trp, this allowing estimation of IDO activity.

#### 17 18 Statistical Analysis

19  
20 In order to describe the data, medians and ranges were given for continuous variables and  
21 numbers and percentages for categorical variables. To evaluate the associations of plasma IDO  
22 levels with the severity of NE, we divided the patients into two groups according to the maximum  
23 IDO value. Groups were compared using the Mann-Whitney *U*- test. Categorical data were  
24 analyzed by the  $\chi^2$  test or the Fisher's exact test. Correlations were calculated by means of  
25 Spearman's rank correlation coefficient. Wilcoxon's test was used to compare two related samples.



1  
2  
3 1 We also performed a logistic regression analysis with significant renal insufficiency (creatinine  
4  
5 2 >250  $\mu\text{mol/l}$ ) as a dependent factor and high IDO and low urinary output as independent factors in  
6  
7  
8 3 order to further examine the associations of these factors with significant renal insufficiency. Age  
9  
10 4 and sex were also included in these models. Odds ratios (OR) and their 95% confidence intervals  
11  
12 5 (95% CI) were given. All tests were two-sided, and statistically significant *P*-values are given. All  
13  
14 6 analyses were made with the SPSS (version 7.5) statistical software package.  
15  
16  
17 7  
18  
19 8  
20  
21

## 22 9 **Results**

23  
24 10  
25  
26  
27 11 The clinical and laboratory characteristics of the NE patients are shown in Table 1. The median  
28  
29 12 duration of symptoms before admission to the hospital was four days (range 1-15 days). None of the  
30  
31 13 patients was in clinical shock at the time of admission. Five of the 102 NE patients (5%) eventually  
32  
33 14 needed dialysis treatment during hospital stay. The median duration of fever was six days (range 2-  
34  
35 15 19 days). Everyone recovered completely.  
36  
37

38  
39 16 The ability of maximum serum kyn/trp ratio to predict serum creatinine levels >250  $\mu\text{mol/l}$  was  
40  
41 17 evaluated using receiver operating characteristics (ROC) curves [Boyd, 1997]. A maximum kyn/trp  
42  
43 18 >202  $\mu\text{mol/mmol}$  showed a sensitivity of 85% and a specificity of 75% for detecting maximum  
44  
45 19 serum creatinine levels >250  $\mu\text{mol/l}$  and the AUC (area under curve) was 0.84 (95% CI 0.76-0.91)  
46  
47 20 (Figure 1). This cut-off point was used to divide patients into two groups. Patients with low IDO  
48  
49 21 value had maximum kyn/trp ratio  $\leq 202$   $\mu\text{mol/mmol}$  and patients with high IDO value had  
50  
51 22 maximum kyn/trp ratio >202  $\mu\text{mol/mmol}$ . IDO values during acute illness and hospitalization were  
52  
53 23 significantly higher (median maximum kyn/trp 199.3, range 46.6-3679.2,  $\mu\text{mol/mmol}$ ) than  
54  
55 24 convalescent values taken 14-32 days (median 22 days) after the onset of fever (median 64.7, range  
56  
57 25 23.9-350.6,  $\mu\text{mol/mmol}$ ,  $P < 0.001$ ).  
58  
59  
60

1  
2  
3 1 The proportion of males and females did not differ between patients with high serum IDO levels  
4  
5 2 and patients with low IDO levels (70% male vs. 65% male, high vs. low IDO groups, respectively,  
6  
7 3  $P=0.618$ ). Forty-six (45%) of the patients were smokers. The proportion of smokers also did not  
8  
9 4 differ between high and low IDO groups (52% smokers vs. 44% smokers, high vs. low IDO groups,  
10  
11 5  $P=0.404$ ). All five patients, who needed dialysis treatment were in the high IDO group ( $P=0.025$ ).  
12  
13 6 The maximum level of IDO was associated with several other parameters reflecting disease severity  
14  
15 7 and renal impairment (Table 2). Patients with high IDO levels were older than patients with low  
16  
17 8 IDO levels, while BMI did not differ between these two groups. There was a strong positive  
18  
19 9 correlation between maximum serum IDO and creatinine levels ( $r=0.672$ ,  $P<0.001$ ), as well as  
20  
21 10 maximum IDO level and change in weight, which reflects fluid retention during renal impairment  
22  
23 11 ( $r=0.526$ ,  $P<0.001$ ). Maximum IDO levels and minimum urinary output were inversely correlated  
24  
25 12 ( $r=-0.385$ ,  $P<0.001$ ). There was a positive correlation between maximum IDO levels and the length  
26  
27 13 of hospital stay ( $r=0.494$ ,  $P<0.001$ ). Maximum IDO levels and the maximum blood leukocyte count  
28  
29 14 were positively correlated ( $r=0.508$ ,  $P<0.001$ ). We also performed a logistic regression analysis in  
30  
31 15 order to evaluate the association of high IDO levels with significant renal insufficiency  
32  
33 16 (creatinine  $>250$   $\mu\text{mol/l}$ ) when adjusted for age, sex, and low urinary output (Table 3). A high IDO  
34  
35 17 level was an independent risk factor for significant renal insufficiency in this model.  
36  
37  
38  
39  
40  
41  
42

43 18 We also analysed maximum kyn and trp values separately in relation to parameters reflecting the  
44  
45 19 severity of NE. Maximum kyn level were positively correlated with maximum serum creatinine  
46  
47 20 ( $r=0.785$ ,  $P<0.001$ ) and change in weight ( $r=0.517$ ,  $P<0.001$ ). It was inversely correlated with  
48  
49 21 minimum urinary output ( $r=-0.357$ ,  $P<0.001$ ). There was also a positive correlation between  
50  
51 22 maximum kyn level and the length of hospital stay ( $r=0.517$ ,  $P<0.001$ ) and the maximum blood  
52  
53 23 leukocyte value ( $r=0.516$ ,  $P<0.001$ ). Maximum trp level had a slight positive correlation with  
54  
55 24 minimum urinary output ( $r=0.230$ ,  $P=0.026$ ), and a slight inverse correlation with change in weight  
56  
57  
58  
59  
60

1  
2  
3 1 (r=-0.201,  $P=0.044$ ), the maximum blood leukocyte value (r=-0.244,  $P=0.014$ ) and maximum CRP  
4  
5 2 (r=-0.256,  $P=0.009$ ).  
6  
7

8 3 As the patients with NE sought medical assistance at different time intervals from the onset of  
9  
10 4 fever, the serum trp and kyn samples were also taken at different periods from the onset. From the  
11  
12 5 majority of patients (80 %) we had trp and kyn samples taken six days from the onset of fever. The  
13  
14 6 median kyn/trp level on that day was 191.9, range 40.9-2442.5  $\mu\text{mol}/\text{mmol}$ . In this subgroup of 82  
15  
16 7 patients, the main results remained the same. Patients with high IDO (kyn/trp >202  $\mu\text{mol}/\text{mmol}$ ) six  
17  
18 8 days after the onset had higher maximum blood leukocytes (median 12.3, range 6.3-31.2  $\times 10^9/\text{l}$  vs.  
19  
20 9 median 9.1, range 5.1-24.0  $\times 10^9/\text{l}$ ,  $P=0.001$ ), higher maximum serum creatinine (median 445, range  
21  
22 10 79-1285  $\mu\text{mol}/\text{l}$  vs. median 113 range 60-615  $\mu\text{mol}/\text{l}$ ,  $P<0.001$ ), greater change in weight (median  
23  
24 11 3.5, range 0-12.0 kg vs. median 1.6, range 0-9.9 kg,  $P<0.001$ ), and longer hospital stay (median 7,  
25  
26 12 range 3-14 days vs. median 5, range 2-10 days,  $P<0.001$ ) than patients with low IDO. They also had  
27  
28 13 lower minimum urinary output (median 1085, range 50-4900 ml vs. median 1555, range 200-4940  
29  
30 14 ml,  $P=0.042$ ) than patients with low IDO.  
31  
32  
33  
34  
35

36 15 In order to analyze the kinetics of the changes in serum IDO and creatinine levels, we depicted  
37  
38 16 their daily medians in relation to the day of the onset of fever. Figure 2 shows that both variables  
39  
40 17 first gradually increased to their peak values, and thereafter they started to decline. Median IDO  
41  
42 18 peaked to 243.9  $\mu\text{mol}/\text{mmol}$  nine days after the onset of fever, whereas median creatinine was at its  
43  
44 19 highest (265  $\mu\text{mol}/\text{l}$ ) 10 days after the onset of fever.  
45  
46  
47  
48  
49  
50  
51  
52

## 53 22 Discussion

54  
55 23

56  
57 24 The present study with 102 consecutive and prospectively identified hospitalized patients is to our  
58  
59 25 knowledge the first study on IDO during a hantavirus infection. Our data show that IDO levels are  
60

1 elevated during acute Puumala hantavirus infection. The median maximum kyn/trp ratio in our  
2 study was 199.3  $\mu\text{mol}/\text{mmol}$  during acute NE. Previous studies on IDO levels in patients with  
3 systemic lupus erythematosus (SLE) and in bacteremic patients have been carried out in Tampere  
4 University Hospital using the same laboratory as in the present study. In SLE patients the median  
5 IDO levels were 39.1-43.0  $\mu\text{mol}/\text{mmol}$  during different seasons [Pertovaara et al., 2007]. In the  
6 same study the median kyn/trp ratio was also analyzed in 309 healthy controls and was found to be  
7 25.9  $\mu\text{mol}/\text{mmol}$ . Interestingly, in bacteremic patients, the median maximum kyn/trp ratio was  
8 lower (89.9  $\mu\text{mol}/\text{mmol}$ ) than in our patients with Puumala virus infection (199.3  $\mu\text{mol}/\text{mmol}$ )  
9 [Huttunen et al., 2010]. In the present study, the IDO levels were lower during the convalescent  
10 phase (14-32 days after the onset of fever) than during the acute phase, but still higher than the  
11 values published earlier for the healthy controls. It was not possible to standardize dietary intake of  
12 the essential amino acid trp in our study. However, it seems unlikely that dietary intake would have  
13 affected serum kyn/trp levels, since kyn/trp ratio is not affected by the dietary intake of trp  
14 [Schrocksadel et al., 2006].

15 In the present study, high IDO levels were associated with increased disease severity, especially  
16 renal impairment in acute Puumala hantavirus infection. A high IDO level was found to be an  
17 independent risk factor for maximum serum creatinine exceeding 250  $\mu\text{mol}/\text{l}$ , when examined  
18 together with low urinary output, age, and sex. We found that high IDO levels were associated with  
19 significant renal insufficiency and higher blood leukocyte count as well as with lower urinary  
20 output and blood hematocrit. It also associated strongly with the duration of hospitalization.

21 IDO has not been widely studied in patients with viral infections. Increased IDO activity has been  
22 found in acute dengue virus infection and chronic hepatitis C virus infection [Becerra et al., 2009;  
23 Larrea et al., 2007]. Also increased trp degradation has been found in chronic Epstein-Barr virus  
24 infection [Bellmann-Weiler et al., 2008]. In those studies the association between IDO level and the  
25 severity or progression of the disease was not studied. However, in human immunodeficiency virus

1  
2  
3  
4  
5  
6  
7  
8  
9  
10  
11  
12  
13  
14  
15  
16  
17  
18  
19  
20  
21  
22  
23  
24  
25  
26  
27  
28  
29  
30  
31  
32  
33  
34  
35  
36  
37  
38  
39  
40  
41  
42  
43  
44  
45  
46  
47  
48  
49  
50  
51  
52  
53  
54  
55  
56  
57  
58  
59  
60

infection enhanced trp degradation by IDO was associated with disease progression and complications, e.g. weight loss and neuropsychiatric disorders [Schroecksnadel et al., 2007]. High IDO levels were also associated with severe disease and mortality in bacteremic patients [Huttunen et al., 2010]. Treatment with granulocyte-macrophage colony-stimulating factor resulted in reduced IDO levels in severe sepsis, possibly due to improved antibacterial defence [Scheffold et al., 2010]. In the present study, a high IDO level was associated with increased severity of Puumala hantavirus infection.

Studies of IDO in humans with kidney diseases are also scarce. It has been demonstrated that concentrations of trp metabolites increase in chronic renal insufficiency [Saito et al., 2000; Scheffold et al., 2009]. This is presumed due to an increase in production and/or decrease in degradation, rather than a decrease in renal excretion [Saito et al., 2000]. In our study, the level of trp metabolite, kyn, positively correlated with the severity of acute renal insufficiency. This may suggest that the increased production of kyn reflecting the activity of IDO is important. In kidney allograft recipients, upregulation of IDO is associated with rejection [Brandacher et al., 2007]. In mice, it has been shown that IDO promotes renal ischemia-reperfusion injury [Mohib et al., 2008]. On the other hand, in nephrotoxic serum nephritis, a model of crescentic glomerulonephritis, IDO acts as a protective factor [Hou et al., 2009].

The pathogenesis of NE is not well understood. PUUV has no direct cytopathic effect on cultured cells [Temonen et al., 1993]. Therefore, it is unlikely that direct viral cytotoxicity is the primary cause of pathology in NE. PUUV causes acute tubulointerstitial nephritis and the severity of histological changes in NE has been found to be related to the clinical severity of renal failure as measured by the highest serum creatinine level [Mustonen et al., 1994b]. In kidney biopsies of patients with NE, there is an increased amount of infiltrating cells in the peritubular areas [Temonen et al., 1996]. The infiltrating cells include plasma cells, monocytes/macrophages, and lymphocytes, as well as polymorphonuclear cells, mainly eosinophils and neutrophils. CD8+ T-cells predominate

1  
2  
3 1 the lymphocyte infiltrate [Temonen et al., 1996]. This is thought to indicate that cell-mediated  
4  
5  
6 2 cytotoxicity is important in the kidney involvement in NE.

7  
8 3 Macrophages express IDO when exposed to IFN- $\gamma$ . Increased IDO activity in turn results in T-cell  
9  
10 4 suppression and the induction of T-regulatory cells (T-regs). By a positive feedback loop, T-regs can  
11  
12 5 further enhance IDO activity by stimulating increased IFN- $\gamma$  expression [Mulley and Nikolic-  
13  
14  
15 6 Paterson, 2008]. It has been demonstrated that increased IDO activity promotes TEC apoptosis and  
16  
17 7 inhibition of IDO augments TEC survival [Mohib et al., 2007]. We found that high IDO was  
18  
19 8 strongly associated with significant renal failure. We also found that IDO levels peaked before  
20  
21 9 creatinine levels, which might suggest that IDO could be in fact involved in the pathogenesis of  
22  
23 10 renal failure in NE. One pathogenetic mechanism could be TEC apoptosis. Previously signs of  
24  
25 11 epithelial cell apoptosis have been detected in patients with PUUV infection [Klingström et al.,  
26  
27 12 2006]. Increased IDO levels could also contribute to immunosuppression through T-cell  
28  
29 13 suppression and apoptosis.

30  
31  
32  
33  
34 14 In conclusion, a high serum kyn/try level reflecting increased IDO activity was associated with  
35  
36 15 clinically severe PUUV-induced interstitial nephritis and we suggest that it might even be involved  
37  
38 16 in the pathogenesis of renal failure in NE.

## 39 17 40 41 18 42 43 44 45 46 19 **Acknowledgements**

47  
48 20  
49  
50 21 The study was financially supported by the Competitive Research Funding of the Pirkanmaa  
51  
52 22 Hospital District, the European Commission Project “Diagnosis and control of rodent-borne viral  
53  
54 23 zoonoses in Europe” (QLK2-CT-2002-01358) and the U.S. National Institutes of Health (NIH grant  
55  
56 24 U19 AI57319).

1  
2  
3  
4  
5  
6  
7  
8  
9  
10  
11  
12  
13  
14  
15  
16  
17  
18  
19  
20  
21  
22  
23  
24  
25  
26  
27  
28  
29  
30  
31  
32  
33  
34  
35  
36  
37  
38  
39  
40  
41  
42  
43  
44  
45  
46  
47  
48  
49  
50  
51  
52  
53  
54  
55  
56  
57  
58  
59  
60

1 The skilful technical assistance of Ms Katriina Yli-Nikkilä and Ms Mirja Ikonen is greatly  
2 appreciated.

5 **Disclosure**

7 The authors report no conflicts of interest.

For Peer Review

**References**

- 1  
2  
3  
4  
5  
6  
7  
8  
9  
10  
11  
12  
13  
14  
15  
16  
17  
18  
19  
20  
21  
22  
23  
24  
25  
26  
27  
28  
29  
30  
31  
32  
33  
34  
35  
36  
37  
38  
39  
40  
41  
42  
43  
44  
45  
46  
47  
48  
49  
50  
51  
52  
53  
54  
55  
56  
57  
58  
59  
60
- 1     **References**
- 2
- 3     1     **References**
- 4
- 5     2
- 6
- 7
- 8     3     Becerra A, Warke RV, Xhaja K, Evans B, Evans J, Martin K, de Bosch N, Rothman AL, Bosch I.
- 9
- 10    4     2009. Increased activity of indoleamine 2,3-dioxygenase in serum from acutely infected
- 11
- 12    5     dengue patients linked to gamma interferon antiviral function. *J Gen Virol* 90:810-817.
- 13
- 14
- 15    6     Bellmann-Weiler R, Schroecksnadel K, Holzer C, Larcher C, Fuchs D, Weiss G. 2008. IFN-gamma
- 16
- 17    7     mediated pathways in patients with fatigue and chronic active Epstein Barr virus-infection. *J*
- 18
- 19    8     *Affect Disord* 108:171-176.
- 20
- 21
- 22    9     Boyd JC. 1997. Mathematical tools for demonstrating the clinical usefulness of biochemical
- 23
- 24    10    markers. *Scand J Clin Lab Invest Suppl* 227:46-63.
- 25
- 26
- 27    11    Brandacher G, Cakar F, Winkler C, Schneeberger S, Obrist P, Bosmuller C, Werner-Felmayer G,
- 28
- 29    12    Werner ER, Bonatti H, Margreiter R, Fuchs D. 2007. Non-invasive monitoring of kidney
- 30
- 31    13    allograft rejection through IDO metabolism evaluation. *Kidney Int* 71:60-67.
- 32
- 33
- 34    14    Brummer-Korvenkontio M, Vapalahti O, Henttonen H, Koskela P, Kuusisto P, Vaheri A. 1999.
- 35
- 36    15    Epidemiological study of nephropathia epidemica in Finland 1989-96. *Scand J Infect Dis*
- 37
- 38    16    31:427-435.
- 39
- 40
- 41    17    Burke F, Knowles RG, East N, Balkwill FR. 1995. The role of indoleamine 2,3-dioxygenase in the
- 42
- 43    18    anti-tumour activity of human interferon-gamma in vivo. *Int J Cancer* 60:115-122.
- 44
- 45
- 46    19    Hou W, Li S, Wu Y, Du X, Yuan F. 2009. Inhibition of indoleamine 2, 3-dioxygenase-mediated
- 47
- 48    20    tryptophan catabolism accelerates crescentic glomerulonephritis. *Clin Exp Immunol*
- 49
- 50    21    156:363-372.
- 51
- 52
- 53    22    Huttunen R, Syrjänen J, Aittoniemi J, Oja SS, Raitala A, Laine J, Pertovaara M, Vuento R, Huhtala
- 54
- 55    23    H, Hurme M. 2010. High activity of indoleamine 2,3 dioxygenase enzyme predicts disease
- 56
- 57    24    severity and case fatality in bacteremic patients. *Shock* 33:149-154.
- 58
- 59
- 60



- 1  
2  
3 1 Hwu P, Du MX, Lapointe R, Do M, Taylor MW, Young HA. 2000. Indoleamine 2,3-dioxygenase  
4  
5 2 production by human dendritic cells results in the inhibition of T cell proliferation. *J*  
6  
7 3 *Immunol* 164:3596-3599.  
8  
9  
10 4 Jalili RB, Rayat GR, Rajotte RV, Ghahary A. 2007. Suppression of islet allogeneic immune  
11  
12 5 response by indoleamine 2,3 dioxygenase-expressing fibroblasts. *J Cell Physiol* 213:137-  
13  
14 6 143.  
15  
16  
17 7 Kanerva M, Mustonen J, Vaheri A. 1998. Pathogenesis of Puumala and other hantavirus infections.  
18  
19 8 *Rev Med Virol* 8:67-86.  
20  
21  
22 9 Kanerva M, Paakkala A, Mustonen J, Paakkala T, Lahtela J, Pasternack A. 1996. Pulmonary  
23  
24 10 involvement in nephropathia epidemica: radiological findings and their clinical correlations.  
25  
26 11 *Clin Nephrol* 46:369-378.  
27  
28  
29 12 Klingström J, Hardestam J, Stoltz M, Zuber B, Lundkvist Å, Linder S, Ahlm C. 2006. Loss of cell  
30  
31 13 membrane integrity in Puumala hantavirus-infected patients correlates with levels of  
32  
33 14 epithelial cell apoptosis and perforin. *J Virol* 80:8279-8282.  
34  
35  
36 15 Laich A, Neurauter G, Widner B, Fuchs D. 2002. More rapid method for simultaneous  
37  
38 16 measurement of tryptophan and kynurenine by HPLC. *Clin Chem* 48:579-581.  
39  
40  
41 17 Larrea E, Riezu-Boj JI, Gil-Guerrero L, Casares N, Aldabe R, Sarobe P, Civeira MP, Heeney JL,  
42  
43 18 Rollier C, Verstrepen B, Wakita T, Borrás-Cuesta F, Lasarte JJ, Prieto J. 2007. Upregulation  
44  
45 19 of indoleamine 2,3-dioxygenase in hepatitis C virus infection. *J Virol* 81:3662-3666.  
46  
47  
48 20 Linderholm M, Billstrom A, Settergren B, Tärnvik A. 1992. Pulmonary involvement in  
49  
50 21 nephropathia epidemica as demonstrated by computed tomography. *Infection* 20:263-266.  
51  
52  
53 22 Lähdevirta J. 1971. Nephropathia epidemica in Finland. A clinical histological and epidemiological  
54  
55 23 study. *Ann Clin Res* 3:1-54.  
56  
57  
58 24 Mellor A. 2005. Indoleamine 2,3 dioxygenase and regulation of T cell immunity. *Biochem Biophys*  
59  
60 25 *Res Commun* 338:20-24.

- 1  
2  
3 1 Mellor AL, Keskin DB, Johnson T, Chandler P, Munn DH. 2002. Cells expressing indoleamine 2,3-  
4  
5 2 dioxygenase inhibit T cell responses. *J Immunol* 168:3771-3776.  
6  
7  
8 3 Mellor AL, Munn DH. 2004. IDO expression by dendritic cells: tolerance and tryptophan  
9  
10 4 catabolism. *Nat Rev Immunol* 4:762-774.  
11  
12 5 Mohib K, Guan Q, Diao H, Du C, Jevnikar AM. 2007. Proapoptotic activity of indoleamine 2,3-  
13  
14 6 dioxygenase expressed in renal tubular epithelial cells. *Am J Physiol Renal Physiol*  
15  
16 7 293:F801-812.  
17  
18 8 Mohib K, Wang S, Guan Q, Mellor AL, Sun H, Du C, Jevnikar AM. 2008. Indoleamine 2,3-  
19  
20 9 dioxygenase expression promotes renal ischemia-reperfusion injury. *Am J Physiol Renal*  
21  
22 10 *Physiol* 295:F226-234.  
23  
24 11 Mulley WR, Nikolic-Paterson DJ. 2008. Indoleamine 2,3-dioxygenase in transplantation.  
25  
26 12 *Nephrology (Carlton)* 13:204-211.  
27  
28 13 Mustonen J, Brummer-Korvenkontio M, Hedman K, Pasternack A, Pietilä K, Vaheri A. 1994a.  
29  
30 14 Nephropathia epidemica in Finland: a retrospective study of 126 cases. *Scand J Infect Dis*  
31  
32 15 26:7-13.  
33  
34 16 Mustonen J, Helin H, Pietilä K, Brummer-Korvenkontio M, Hedman K, Vaheri A, Pasternack A.  
35  
36 17 1994b. Renal biopsy findings and clinicopathologic correlations in nephropathia epidemica.  
37  
38 18 *Clin Nephrol* 41:121-126.  
39  
40 19 Mustonen J, Partanen J, Kanerva M, Pietilä K, Vapalahti O, Pasternack A, Vaheri A. 1996. Genetic  
41  
42 20 susceptibility to severe course of nephropathia epidemica caused by Puumala hantavirus.  
43  
44 21 *Kidney Int* 49:217-221.  
45  
46 22 Mäkelä S, Mustonen J, Ala-Houhala I, Hurme M, Partanen J, Vapalahti O, Vaheri A, Pasternack A.  
47  
48 23 2002. Human leukocyte antigen-B8-DR3 is a more important risk factor for severe Puumala  
49  
50 24 hantavirus infection than the tumor necrosis factor-alpha(-308) G/A polymorphism. *J Infect*  
51  
52 25 *Dis* 186:843-846.  
53  
54  
55  
56  
57  
58  
59  
60

1  
2  
3  
4  
5  
6  
7  
8  
9  
10  
11  
12  
13  
14  
15  
16  
17  
18  
19  
20  
21  
22  
23  
24  
25  
26  
27  
28  
29  
30  
31  
32  
33  
34  
35  
36  
37  
38  
39  
40  
41  
42  
43  
44  
45  
46  
47  
48  
49  
50  
51  
52  
53  
54  
55  
56  
57  
58  
59  
60

- 1 Paakkala A, Lempinen L, Paakkala T, Huhtala H, Mustonen J. 2004. Medical imaging in  
2 nephropathia epidemica and their clinical correlations. *Eur J Intern Med* 15:284-290.
- 3 Pertovaara M, Hasan T, Raitala A, Oja SS, Yli-Kerttula U, Korpela M, Hurme M. 2007.  
4 Indoleamine 2,3-dioxygenase activity is increased in patients with systemic lupus  
5 erythematosus and predicts disease activation in the sunny season. *Clin Exp Immunol*  
6 150:274-278.
- 7 Saito K, Fujigaki S, Heyes MP, Shibata K, Takemura M, Fujii H, Wada H, Noma A, Seishima M.  
8 2000. Mechanism of increases in L-kynurenine and quinolinic acid in renal insufficiency.  
9 *Am J Physiol Renal Physiol* 279:F565-572.
- 10 Schefold JC, Zeden JP, Fotopoulou C, von Haehling S, Pschowski R, Hasper D, Volk HD, Schuett  
11 C, Reinke P. 2009. Increased indoleamine 2,3-dioxygenase (IDO) activity and elevated  
12 serum levels of tryptophan catabolites in patients with chronic kidney disease: a possible  
13 link between chronic inflammation and uraemic symptoms. *Nephrol Dial Transplant*  
14 24:1901-1908.
- 15 Schefold JC, Zeden JP, Pschowski R, Hammoud B, Fotopoulou C, Hasper D, Fusch G, Von  
16 Haehling S, Volk HD, Meisel C, Schutt C, Reinke P. 2010. Treatment with granulocyte-  
17 macrophage colony-stimulating factor is associated with reduced indoleamine 2,3-  
18 dioxygenase activity and kynurenine pathway catabolites in patients with severe sepsis and  
19 septic shock. *Scand J Infect Dis* 42:164-171.
- 20 Schrocksnadel K, Wirleitner B, Winkler C, Fuchs D. 2006. Monitoring tryptophan metabolism in  
21 chronic immune activation. *Clin Chim Acta* 364:82-90.
- 22 Schroecksnadel K, Zangerle R, Bellmann-Weiler R, Garimorth K, Weiss G, Fuchs D. 2007.  
23 Indoleamine-2, 3-dioxygenase and other interferon-gamma-mediated pathways in patients  
24 with human immunodeficiency virus infection. *Curr Drug Metab* 8:225-236.

- 1  
2  
3 1 Settergren B. 2000. Clinical aspects of nephropathia epidemica (Puumala virus infection) in Europe:  
4  
5  
6 2 a review. *Scand J Infect Dis* 32:125-132.  
7  
8 3 Takikawa O. 2005. Biochemical and medical aspects of the indoleamine 2,3-dioxygenase-initiated  
9  
10 4 L-tryptophan metabolism. *Biochem Biophys Res Commun* 338:12-19.  
11  
12 5 Temonen M, Mustonen J, Helin H, Pasternack A, Vaheri A, Holthöfer H. 1996. Cytokines,  
13  
14 6 adhesion molecules, and cellular infiltration in nephropathia epidemica kidneys: an  
15  
16 7 immunohistochemical study. *Clin Immunol Immunopathol* 78:47-55.  
17  
18 8 Temonen M, Vapalahti O, Holthöfer H, Brummer-Korvenkontio M, Vaheri A, Lankinen H. 1993.  
19  
20 9 Susceptibility of human cells to Puumala virus infection. *J Gen Virol* 74 ( Pt 3):515-518.  
21  
22 10 Vapalahti O, Lundkvist Å, Kallio-Kokko H, Paukku K, Julkunen I, Lankinen H, Vaheri A. 1996.  
23  
24 11 Antigenic properties and diagnostic potential of Puumala virus nucleocapsid protein  
25  
26 12 expressed in insect cells. *J Clin Microbiol* 34:119-125.  
27  
28 13 Vapalahti O, Mustonen J, Lundkvist Å, Henttonen H, Plyusnin A, Vaheri A. 2003. Hantavirus  
29  
30 14 infections in Europe. *Lancet Infect Dis* 3:653-661.  
31  
32  
33  
34  
35  
36  
37  
38  
39  
40  
41  
42  
43  
44  
45  
46  
47  
48  
49  
50  
51  
52  
53  
54  
55  
56  
57  
58  
59  
60

Table 1. Clinical and laboratory findings in 102 patients with acute nephropathia epidemica.

	Median	Range
BMI (kg/m <sup>2</sup> ) (n=83)	26.2	18.5-37.0
Urinary output min (ml/day) (n=94)	1440	50-4940
Change in weight (kg)	2.1	0-12.0
Hospital stay (days)	6	2-15
IDO max (μmol/mmol)	199.3	46.6-3679.2
Creatinine max (μmol/l)	176	52-1285
CRP max (mg/l)	79.8	15.9-269.2
Leukocytes max (10 <sup>9</sup> /l)	10.1	3.9-31.2
Hematocrit min	0.36	0.25-0.44
Platelets min (10 <sup>9</sup> /l)	61	9-238

BMI=body mass index, min=minimum, max=maximum, IDO=serum kynurenine/tryptophan ratio,

CRP=plasma C-reactive protein.

1 Table 2. Clinical and laboratory findings in 102 patients with nephropathia epidemica divided into  
 2 two groups according to maximum serum kynurenine/tryptophan ratio.

	IDO max $\leq$ 202	IDO max $>$ 202	<i>P</i>
	$\mu\text{mol}/\text{mmol}$	$\mu\text{mol}/\text{mmol}$	
	n=52	n=50	
Age (years)	38 (22-77)	50 (25-74)	0.002
BMI ( $\text{kg}/\text{m}^2$ ) (n=83)	24.8 (18.5-34.6)	27.1 (20.9-37.0)	0.149
Urinary output min (ml/day) (n=94)	1900 (200-4940)	1100 (50-4900)	$<0.001$
Change in weight (kg)	1.0 (0-10.0)	3.5 (0-12.0)	$<0.001$
Hospital stay (days)	5 (2-15)	8 (3-14)	$<0.001$
Creatinine max ( $\mu\text{mol}/\text{l}$ )	102 (52-537)	379 (75-1285)	$<0.001$
CRP max (mg/l)	72.1 (15.9-176.0)	104.1 (19.7-269.2)	0.029
Leukocytes max ( $10^9/\text{l}$ )	9.0 (3.9-24.0)	11.9 (6.3-31.2)	$<0.001$
Hematocrit min	0.38 (0.31-0.44)	0.33 (0.25-0.40)	$<0.001$
Platelets min ( $10^9/\text{l}$ )	53 (14-172)	67 (9-238)	0.202

4 Values are expressed as medians (range). BMI=body mass index, min=minimum, max=maximum,  
 5 IDO=serum kynurenine/tryptophan ratio, CRP=plasma C-reactive protein.

1  
2  
3 1 Table 3. Multivariate analysis of risk factors for serum creatinine level >250  $\mu\text{mol/l}$  among 94  
4  
5  
6 2 hospitalized patients with nephropathia epidemica.  
7  
8 3  
9

		Creatinine $\leq 250$	Creatinine $> 250$	OR	95% CI
		$\mu\text{mol/l}$	$\mu\text{mol/l}$		
		N=53	N=41		
Age (years)		43	48	0.98	0.94-1.03
Sex	Female	18	9	1	reference
	Male	35	32	2.70	0.80-9.09
Low urinary output	No	33	14	1	reference
	Yes	20	27	1.96	0.65-5.87
High IDO	No	39	6	1	reference
	Yes	14	35	17.57	5.25-58.77

34 4 Continuous variables are expressed as medians. Category variables are expressed as numbers.

35  
36 5 IDO=kynurenine/tryptophan ratio. OR=odds ratio. CI=confidence interval.  
37  
38  
39 6  
40 7  
41  
42 8  
43  
44  
45 9  
46  
47  
48  
49  
50  
51  
52  
53  
54  
55  
56  
57  
58  
59  
60

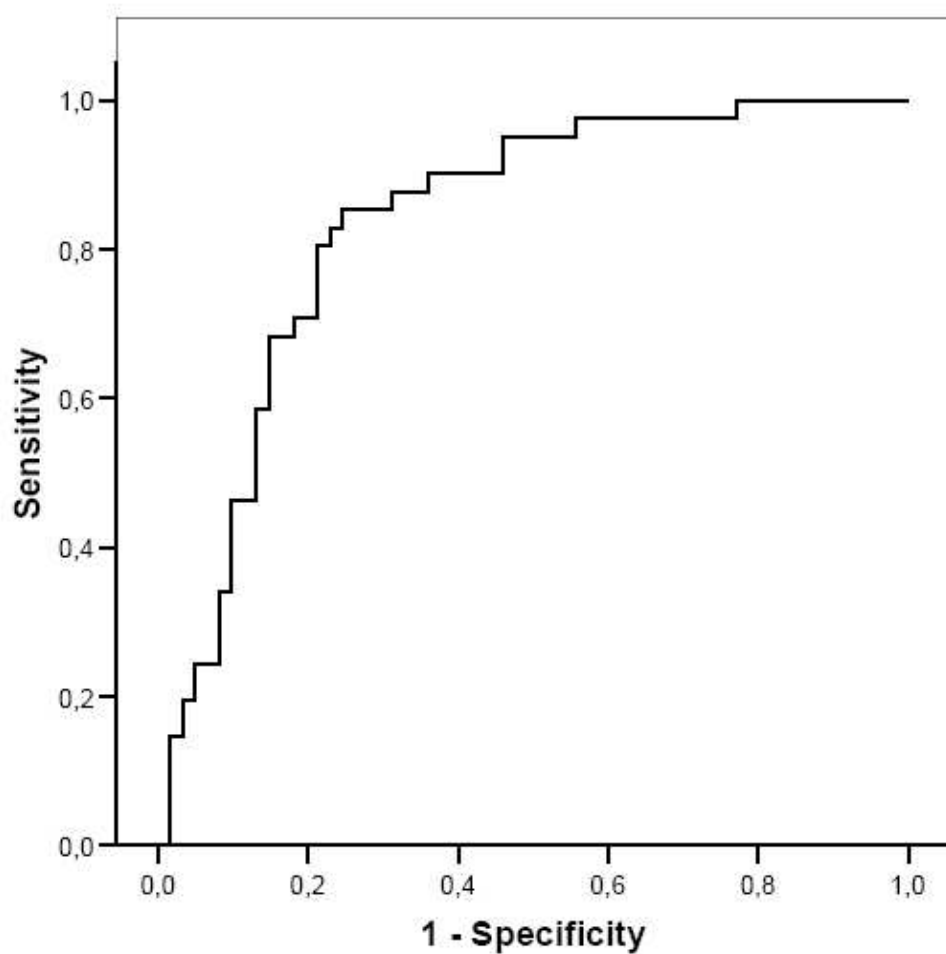


Figure 1. Receiver operating characteristics (ROC) curve for maximum kynurenine/tryptophan ratio in relation to serum creatinine value  $>250 \mu\text{mol/l}$  in 102 patients with nephropathia epidemica.



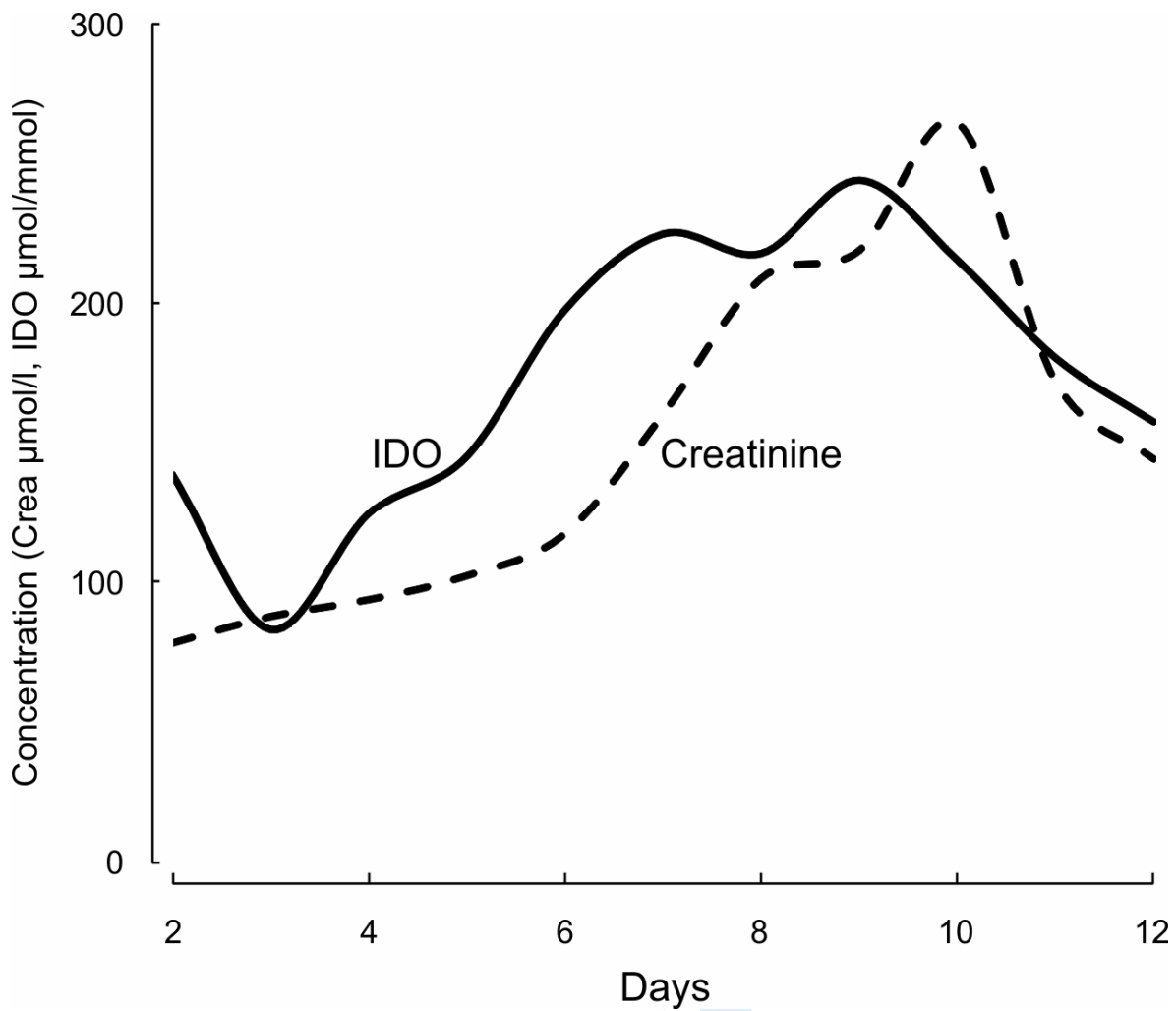


Figure 2. Daily median serum kynurenine/tryptophan (kyn/trp) ratios and creatinine levels in relation to the onset of fever. Kyn/trp median is presented as solid line and creatinine median as dashed line.

IDO=serum kynurenine/tryptophan ratio, crea=serum creatinine