



HAL
open science

Clinical features in microinvasive stage I oral carcinoma

Monica Pentenero, Roberto Navone, Franco Alessandro Motta, Roberto Marino, Lavinia Gassino, Roberto Broccoletti, Sergio Gandolfo

► **To cite this version:**

Monica Pentenero, Roberto Navone, Franco Alessandro Motta, Roberto Marino, Lavinia Gassino, et al.. Clinical features in microinvasive stage I oral carcinoma. *Oral Diseases*, 2010, 17 (3), pp.298. 10.1111/j.1601-0825.2010.01740.x . hal-00613819

HAL Id: hal-00613819

<https://hal.science/hal-00613819>

Submitted on 6 Aug 2011

HAL is a multi-disciplinary open access archive for the deposit and dissemination of scientific research documents, whether they are published or not. The documents may come from teaching and research institutions in France or abroad, or from public or private research centers.

L'archive ouverte pluridisciplinaire **HAL**, est destinée au dépôt et à la diffusion de documents scientifiques de niveau recherche, publiés ou non, émanant des établissements d'enseignement et de recherche français ou étrangers, des laboratoires publics ou privés.

ORAL DISEASES

Clinical features in microinvasive stage I oral carcinoma

| | |
|-------------------------------|---|
| Journal: | <i>Oral Diseases</i> |
| Manuscript ID: | ODI-01-10-OM-1516.R1 |
| Manuscript Type: | Original Manuscript |
| Date Submitted by the Author: | 17-Jun-2010 |
| Complete List of Authors: | Pentenero, Monica; University of Turin, Department of Clinical and Biological Sciences, Oral Medicine and Oral Oncology Section Navone, Roberto; University of Torino, Pathology Motta, Franco; AOU S. Luigi Gonzaga, SCU Odontostomatologia marino, roberto; University of Turin, Department of Clinical and Biological Sciences, Oral Medicine and Oral Oncology Section Gassino, Lavinia; University of Turin, Department of Clinical and Biological Sciences, Oral Medicine and Oral Oncology Section Broccoletti, Roberto; University of Turin, Department of Biomedical Sciences and Human Oncology, Oral Medicine Section Gandolfo, Sergio; University of Turin, Department of Clinical and Biological Sciences, Oral Medicine and Oral Oncology Section |
| Keywords: | Oncology, Diagnostics |
| | |



Formatted: Italian Italy

Formatted: Italian Italy

Clinical features in microinvasive stage I oral carcinoma

Formatted: Italian Italy

Formatted: Italian Italy

Formatted: Italian Italy

Formatted: Italian Italy

Formatted: Italian Italy

Formatted: Italian Italy

Formatted: Italian Italy

Formatted: Italian Italy

Formatted: Italian Italy

Formatted: Italian Italy

Formatted: Italian Italy

Formatted: Italian Italy

Formatted: Italian Italy

Formatted: Italian Italy

Formatted: Italian Italy

Formatted: Italian Italy

Formatted: Italian Italy

Formatted: Italian Italy

Formatted: Italian Italy

Formatted: Italian Italy

Formatted: Italian Italy

Formatted: Italian Italy

Formatted: Italian Italy

Formatted: Italian Italy

Formatted: Italian Italy

^a Monica Pentenero DDS, MSc e-mail: monica.pentenero@unito.it

^b Roberto Navone MD e-mail: roberto.navone@unito.it

^c Franco Motta MD, DDS e-mail: alessandro327@alice.it

^a Roberto Marino DDS e-mail: roberto.marino77@libero.it

^a Lavinia Gassino DDS, MSc e-mail: lavinia.gassino@alice.it

^d Roberto Broccoletti DDS e-mail: roberto.broccoletti@unito.it

^a Sergio Gandolfo MD, DDS e-mail: sergio.gandolfo@unito.it

^a Department of Clinical and Biological Sciences, Oral Medicine and Oral Oncology Section, University of Turin, Regione Gonzole 10, 10043 Orbassano (TO), Italia

^b Department of Biomedical Sciences and Human Oncology, Pathology Section, University of Turin, Via Santena 7, 10126 Torino, Italia

^c SCU Odontostomatology, AOU S. Luigi Gonzaga, Regione Gonzole 10, 10043 Orbassano (TO), Italia

^d Department of Biomedical Sciences and Human Oncology, Oral Medicine Section, University of Turin, Via Nizza 230, 10126 Torino, Italia

Corresponding author:

Dr. Monica Pentenero
Department of Clinical and Biological Sciences, Oral Medicine and Oral Oncology Section,
University of Turin
Gonzole 10, 10043 Orbassano (TO), ITALY;
telephone: +39-011-9026496; fax: +39-011-3498154;
e-mail: monica.pentenero@unito.it

Formatted: Italian Italy

Formatted: Italian Italy

Formatted: Italian Italy

RUNNING TITLE

Microinvasive stage I oral carcinoma

KEY WORDS

Stage I oral squamous cell carcinoma
Tumour thickness
Diagnosis
Clinical appearance,

Deleted: aspect

ABSTRACT

Background. This study aimed to analyse a case series of microinvasive (tumour thickness < 4mm) stage I oral squamous cell carcinoma (OSCC), with an emphasis on the clinical features of the tumours.

Deleted: The present study aims at the analysis of

Methods. In total, 32, microinvasive and 67 non microinvasive stage I lesions, which had been surgically treated, were retrospectively studied and compared. The data analysed included gender, age, risk habits, clinical appearance, lesion site, symptoms, nodal involvement and outcome.

Deleted: Thirty-two

Deleted: Analysed

Deleted: aspect

Deleted: the

Results. The clinical features of microinvasive, lesions meant that, more often than not, they resembled premalignant lesions (p=0.008) and diagnosis was mainly based on accurate clinical examination, rather than the presence of symptoms (p=0.029). During a median follow-up of 4.5 years, one, nodal involvement and one cancer-related death were observed in the patients with microinvasive lesions. A significantly higher (p=0.044) level of nodal involvement was observed in the non-microinvasive lesion group.

Deleted: Microinvasive

Deleted: showed clinical aspects that,

Deleted: due to an

Deleted: ,

Deleted: to

Deleted: in

Deleted: 1

Deleted: 1

Deleted:

Deleted: (p=0.044)

Deleted:

Deleted: s

Deleted: Although s

Conclusions. Stage I OSCC has a favourable prognosis overall, but nodal recurrence is more common in non-microinvasive cancers. As microinvasive lesions tend to present clinically as premalignant lesions, accurate clinical examination is essential if misdiagnosis of early lesions is to be avoided.

Deleted: an

Deleted: a must

Deleted: the underestimation

INTRODUCTION

Microinvasive carcinoma is an early-stage, relatively thin tumour, without invasion of deep tissues. Several studies (Pentenero et al., 2005) and a recent meta-analysis of the international literature (Huang et al., 2009) demonstrated how tumour thickness could affect both nodal involvement and survival. This evidence led to the proposal of a modified pathological tumour, node, metastasis (pTNM) staging system, in which three cut-offs points for tumour thickness (5, 10 and 20 mm) were combined with the largest tumour dimension to obtain the pT stage (Howaldt et al., 1999).

Depth of invasion (DOI) and tumour thickness (TT) are not the same. "Depth of invasion" means the extent of cancer growth into the tissue beneath an epithelial surface. In cases in which epithelium has been destroyed some investigators reconstruct a surface line and measure downwards from it. However, the DOI is sometimes expressed by referring to the microscopic, anatomical deep structures that are reached, rather than by referring to objective micrometer measurements in millimetres (Thompson, 1986, Breuninger et al., 1990, Okamoto et al., 2002). In this case, agreement between pathologists is less readily achieved, because a series of subjective assessments are needed to determine the level of invasion (Breslow, 1977). By contrast, "tumour thickness" refers to the entire tumour mass; an objective parameter is needed, and the measurement can be obtained using an ocular micrometer.

Proximity to blood vessels and lymphatics determines the risk of developing nodal metastases, as close proximity facilitates the tumour's ability to disseminate. Therefore, it may be more accurate to consider the actual mass that is present

- Deleted: with low thickness
- Field Code Changed
- Field Code Changed
- Deleted: may
- Deleted: of
- Deleted: mm,
- Deleted: mm,
- Deleted: , in order
- Field Code Changed
- Deleted: ;

beneath the theoretical reconstruction of a basement membrane (DOI), rather than the thickness of the whole tumour (TT). However, measurement of DOI implies assessments that are more subjective. The first step (subjective identification of the deepest invading tumour cell) is the same for both DOI and TT. Next, for DOI, a series of subjective assessments are needed, whereas for TT objective measurement can be undertaken. Therefore, TT should be considered a more objective and reproducible parameter.

Studies on microinvasive oral carcinomas have mainly focused on nodal involvement and survival, whereas, to our knowledge, no studies have examined a series of microinvasive cancer by describing the clinical features. The clinical features of early-stage carcinomas have been already described in the literature, but have not been related to TT.

The aim of the present study was to analyze a case series of early-stage (stage I) microinvasive oral carcinomas, to discover whether any clinical features could be related to the microinvasive histological status of the lesions. For this purpose, the tumours were compared with non-microinvasive stage I oral carcinomas.

Deleted: even if depth of invasion has been felt to be more important than the tumour thickness, measurement of the depth on invasion implies more subjective assessments such as the reconstruction of the adjacent intact mucosa line or of the basement membrane line.

Deleted: Various cut-off values for tumour thickness and depth of invasion have been proposed in the literature. In the present study a cut-off value of 4 mm for tumour thickness was used to define microinvasive lesions.¶

Deleted: oral

Deleted: are

Deleted: while

Deleted: the best of

Deleted:

Deleted: ¶

Deleted:

Deleted: they were never

Deleted: tumour thickness

Deleted: purpose

Deleted:

Deleted: oral

Deleted: in order to find out if

Deleted: they

Deleted: to

Deleted:

MATERIAL AND METHODS

A retrospective study was performed on patients surgically treated for clinical stage I (cT1N0M0)(Sobin & Wittekind, 2002) oral squamous cell carcinoma (OSCC) at the Oral Medicine and Oral Oncology Section of the University of Turin.

Field Code Changed

Patients with previous upper-aero digestive tract cancer, or those who had been treated by adjuvant or neo-adjuvant therapies other than surgery to the neck, were excluded.

Deleted: for the untreated

Preoperative staging was based on clinical examination (palpation) and imaging data. Each patient was assessed by ultrasonography (US) and at least one other imaging technique (computed tomography (CT) or magnetic resonance (MRI)). Lymph nodes with abnormal appearance suggestive of metastases were diagnosed by established criteria(Sakai et al., 2000), including nodal size(>15 mm for levels I and II, > 10 mm for levels III-V). In addition, any lymph node with a central lucency that suggested necrosis was considered malignant, regardless of its size; conversely, lymph nodes of border line size (10-15 mm for levels I and II and 8-10 mm for levels III-V) were considered positive if there were other signs suggestive of malignant involvement such as nodes spherical in shape (rather than being flat or bean-shaped), rim enhancement with central necrosis or cystic degeneration, and presence of abnormally grouped lymph nodes.

Assessment of tumour thickness

Deleted: I

Deleted: assessment

Deleted: In order to have

To devise a more objective measurement procedure it was decided to define microinvasiveness using TT rather than DOI. Various cut-off values for TT and DOI have been proposed in the literature, with 4 and 5 mm being the most frequently used. In the absence of an international consensus on the cut-off value to be

Deleted: tumour thickness

Deleted: that

Deleted: depth of invasion

used, in the present study a cut-off value of 4 mm for TT used to define microinvasive lesions. To obtain a standardized assessment of the TT, an experienced pathologist blindly reviewed the histological slides of all the selected cases. Thickness was measured by an optical micrometer, measuring from the surface to the maximum depth of the tumour (Figure 1). Using the cut-off value of 4mm, a subgroup of microinvasive lesions was identified.

- Deleted: So as t
- Deleted: tumour thickness
- Deleted: starting either
- Deleted: tumour
- Deleted: al
- Deleted: the
- Deleted: created

Clinical data

Data such as gender, age, risk habits (tobacco and/or alcohol), clinical appearance of the lesion/s (e.g. flat or patches, plaques, verrucous lesions and/or erosions/ulcers and lesion site were collected from the patients' records. The histological type of the mucosa (thin, vestibular, or masticatory), location in the oral cavity (anterior/posterior), symptoms and outcome, were all recorded. Lesions were considered symptomatic if there was any sensation inducing the patient to visit a doctor. The anterior/posterior location was defined by referring to an imaginary coronal plane passing through the premolar area. The motivation for the visit was defined as "referred by dentist" in cases of incidental findings of asymptomatic lesions, which were occasionally observed during routine dental visits or treatments and prompted a referral.

- Deleted: aspect
- Deleted: /
- Deleted: mucosa
- Deleted: mucosa
- Deleted: and
- Deleted: mucosa
- Deleted: and the
- Deleted: location in the oral cavity
- Deleted: taken into consideration
- Deleted: in presence of
- Deleted: ask for a

Smoking habit was recorded as positive for both active and former smokers. The use of smokeless (e.g. chewing) tobacco was not considered as the practice is almost non-existent in Italy. The consumption of at least one alcoholic unit per day (1 unit = 8-10 g of ethanol = 1 glass of wine = ¼ litre of beer = 1 measure of liqueur) was considered alcohol exposure.

- Deleted: The tobacco
- Deleted: -
- Deleted: taken into
- Deleted: ation
- Deleted: it
- Deleted: 1
- Deleted: (au)

1
2
3
4
5
6
7
8
9
10
11
12
13
14
15
16
17
18
19
20
21
22
23
24
25
26
27
28
29
30
31
32
33
34
35
36
37
38
39
40
41
42
43
44
45
46
47
48
49
50
51
52
53
54
55
56
57
58
59
60

Data on treatment methods and delayed nodal involvement or cancer-related deaths were obtained from the follow-up clinical charts.

Deleted: modalities
Deleted:
Deleted: by

Statistical analysis

Comparisons between dichotomous variables were assessed by using the chi-square test with Yates correction or the Fisher's exact test, and analysis of variance (ANOVA) was used to test for comparability of age (having proved normal distribution of values). Survival was calculated by Kaplan-Meier analysis using the log-rank test. All the statistical procedures were performed using the SPSS 17.0 software package (Apache Software Foundation, Chicago, IL, USA). A p-value of less than, or equal to, 0.05 was considered significant.

Deleted: while
Deleted: the
Deleted: method
Deleted: software
Deleted: statistically

RESULTS

In total, 99 patients (56 men and 43 women), surgically treated for stage I OSCC, were retrieved from the computerized patient database. Mean age at diagnosis was 64.2 years (range, 30 to 92 years, median 67 years). Gender was a significant parameter for risk habits: both tobacco (p=0.007) and alcohol (p=0.002) consumption were more common in men, but no differences were observed in age (p=0.892) or presence of symptoms (p=0.596).

Lesions were located on the ventral tongue/tongue border (54/99; 54.5%), buccal mucosa (18/99; 18.2%), floor of the mouth (16/99; 16.2%), gingiva (6/99; 6.1%), lip (4/99; 4.0%) and hard palate (1/99; 1.0%). These locations meant that there were 70/99 (70.7%) lesions on thin mucosa, 22/99 (22.2%) on vestibular mucosa and 7/99 (7.1%) on masticatory mucosa. Anterior lesions were present in 35/99 (35.4%) cases, median lesions in 22/99 (22.2%) and posterior lesions in 42/99 (42.4%).

Using TT measurement, the lesions were divided into 32 microinvasive and 67 non-microinvasive lesions (table 1). Microinvasive OSCC were not significantly related to gender (p=0.141), age (p=0.204), tobacco (p=0.904) or alcohol (p=0.071) habit, presence of symptoms (p=0.351), mucosal type (p=0.889), site (p=0.583) or location (p=0.480) of the lesions. Microinvasive lesions had distinctive clinical features, present more frequently as patches, plaques or erosions rather than as ulcers or verrucous lesions (p=0.008). They were also more likely to be diagnosed either as the results of an incidental finding during routine dental visits or during follow-up visits for premalignant disorders, rather than because of presence of symptoms (p=0.029).

- Deleted: Ninety-nine
- Deleted: ,
- Deleted: ale
- Deleted: female
- Deleted: oral cancer (
- Deleted:)
- Deleted: patients'
- Deleted: A
- Deleted: d between
- Deleted: and
- Deleted: (
- Deleted: , mean 64.2 years
- Deleted: assumption
- Deleted: frequently observed
- Deleted: males
- Deleted: as to
- Deleted: the

- Deleted: The
- Deleted: of tumour thickness divided the group in

- Deleted: significant differences about sex

- Deleted: showed

- Deleted: aspects
- Deleted: as they more often

- Deleted: Finally microinvasive lesions came most often to diagnosis after
- Deleted: "chance detection
- Deleted: "
- Deleted: thanks to
- Deleted: in presence of

Treatment and follow-up

To plan for surgical resection, clinical, histological and imaging (US, CT, MRI) data were used. The traditional policy at our unit for management of the clinically negative neck in T1 OSCC has generally been a "wait-and-see" policy, thus in the present series, elective neck dissection (END) was performed only in cases with borderline nodal features and/or tumour size at preoperative staging or in the presence of poorly differentiated lesions. END (levels I-III) was performed in 18/99 (18.2%) patients, corresponding to six microinvasive and 12 non-microinvasive lesions: five cases (all non-microinvasive) were diagnosed as pN+. As stated above, none of the remaining 81 patients had undergone adjuvant or neo-adjuvant therapies other than surgery to the neck.

Patients were followed up with clinical evaluation and US every 3 months for the first 36 months, every 6 months for the following 36 months, and then once a year. Chest X-ray was performed once a year. Further assessments (CT, MRI, US-guided fine-needle aspiration biopsy) were performed in cases of positive or suspicious results at routine evaluations. The median follow-up was 4.5 years (mean 5.3, range 0.3 to 13.3); during that period, nine regional recurrences (9.1%) and five cancer-related deaths (5.1%) were recorded. Regional recurrence occurred in 1/32 patients (3.1%) with microinvasive lesions and in 8/67 (11.9%) with non-microinvasive lesions; cancer-related death occurred in 1/32 patients (3.1%) with microinvasive lesions and in 4/67 (6.0%) with non-microinvasive lesions. Kaplan-Meier curves gave a 5-year disease-specific survival rate for stage I OSCC of 95%; 96% for microinvasive lesions and 94.5% for non-microinvasive lesions (p=0.550). Conversely, a recurrence time (mean±SD) of 2.3±2.5 years for

Deleted: A neck dissection

Deleted: 5

Deleted: in

Deleted: 9

Deleted: and

Deleted: 5

Deleted: observed

Deleted: The

Deleted: showed

Deleted:

Deleted: ones

Deleted: n average

Deleted: of

1
2
3
4
5
6
7
8
9
10
11
12
13
14
15
16
17
18
19
20
21
22
23
24
25
26
27
28
29
30
31
32
33
34
35
36
37
38
39
40
41
42
43
44
45
46
47
48
49
50
51
52
53
54
55
56
57
58
59
60

nodal involvement was observed and the Kaplan-Meier curves showed a 5-years survival rate of 86.1%; 96.4% for microinvasive lesions and 81.5% for non-microinvasive lesions, (log-rank test, $p=0.044$), thus corresponding to a Negative Predictive Value of 96.9% for microinvasive lesions.

Deleted:

Deleted: ones

Deleted: .

Deleted: ¶
¶

Oral Diseases - Manuscript Copy

DISCUSSION

This retrospective study offers an original contribution about microinvasive oral cancer, as it evaluates the clinical features and factors related to diagnosis in a homogeneous sample of lesions (all Stage I).

Deleted: on

Deleted: values

In agreement with data from international literature (Fukano et al., 1997, Gandolfo et al., 2006, Kim et al., 1993, O-charoenrat et al., 2003), we observed OSCC lesions more frequently in thin mucosa, with the tongue and the floor of the mouth being the most frequently affected sites. Notably, the buccal mucosa was also a relatively frequently affected site in the present series.

Deleted: , OSCC lesions are more often observed in thin mucosa, with the tongue and the floor of the mouth being the most frequently affected sites

Field Code Changed

Deleted: and, noteworthy, also

Deleted: quite

The present data confirmed that TT is significantly related to the clinical appearance of early stage lesions: "thin" lesions were similar to premalignant lesions, presenting as erosions, patches and plaques, whereas the "thick" lesions were more likely to be ulcerated, with a low prevalence of erosions and/or patches. This stresses the importance of careful diagnostic evaluation of any apparently premalignant lesions.

Deleted: showed

Deleted: the tumour thickness

Deleted: aspect

Deleted: ,

Deleted: i.e.

Deleted: looked more like

Deleted: whilst

Deleted: ones

Deleted: are

Deleted: often

Deleted: attentive

Deleted: for

Deleted: in

Deleted: ,

Deleted: reported to be

Deleted: so that the

Deleted: index

Deleted: complaining of

Field Code Changed

Reports in the literature indicate that symptoms are uncommon in the earlier stages, thus early diagnosis of asymptomatic OSCC requires a high clinical index of suspicion. Conversely, symptomatic lesions are more readily diagnosed because a patient experiencing any discomfort will direct the clinician to the primary lesion (Mashberg & Samit, 1995).

In the present series of 99 patients with Stage I OSCC, it was possible to identify the basis of diagnosis in 70 cases: the correct diagnosis was reached for almost half the patients, through an accurate clinical examination. In total, 36/70 diagnoses (51.4%) were made during the follow-up for potentially malignant

Deleted: assess what brought the patients to

Deleted: thanks to

Deleted: A

Deleted: of

Deleted: of

disorders, or occasionally, through detection of asymptomatic lesions. The issue of early diagnosis is even more important for microinvasive lesions; in the present series, only 11/32 (34.4%) diagnosed lesions produced symptoms (p=0.029). It is noteworthy that 11/32 (34.4%) lesions were referred to our attention as an incidental finding during dental visits, thus highlighting the importance of dental practice as an essential aid in the early detection of suspicious intraoral lesions. Nevertheless, symptoms must be interpreted with care. As early cancer has frequently been reported to be asymptomatic, the presence of symptoms that are not strongly indicative of carcinoma, (such as those indicating non-specific inflammation, trauma, or other benign conditions) might induce general practitioners to interpret the symptoms incorrectly and consequently, fail to refer the patients for investigation, resulting in diagnostic delay.

The international literature reports significant links between the delay in diagnosis and location of the lesion on the less visible surfaces of the oral cavity (Gorsky & Dayan, 1995, Kowalski et al., 1994). In the present series, the microinvasive lesions occurred more frequently on the anterior sites, but this did not reach significance (p=0.480). However, it is noteworthy that when anterior or posterior cases were considered separately, the presence of symptoms was frequently related to a diagnosis of anterior lesions (p=0.055; data not shown). Consequently, the presence of symptoms did not seem to be helpful in achieving an early diagnosis in posterior (less visible) tumour lesions.

To date, there are no universally accepted guidelines for the treatment of clinically negative nodes in early stage OSCC, and use of END is a continuing

- Deleted: (PMDs)
- Deleted: This question takes on even more importance in the presence of
- Deleted: , in as much as,
- Deleted: reported herein
- Deleted: were evidenced by the presence of
- Deleted: N
- Deleted: was the fact
- Deleted: after “
- Deleted: chance detection”
- Deleted: Indeed, a
- Deleted: general practitioners might be induced to interpret symptomatic lesions
- Deleted: evocative for
- Deleted: as signs of
- Deleted: flogosis
- Deleted: or
- Deleted: ,
- Deleted: m
- Deleted: which leads to a
- Deleted: I
- Deleted: of the
- Deleted: locations
- Deleted: seem to more frequently involve the
- Deleted: does
- Deleted: a statistical
- Deleted: is
- Deleted: only
- Deleted: are
- Deleted: seems to be more
- Deleted: (Shah & Gil, 2008, Yuen et al., 2009). Indeed, the decision as to whether to treat the neck nodes depends on tumour and patient factors that are evaluated, on an individual basis, by the surgeon.

controversy (Kligerman et al., 1994, Shah & Gil, 2008, Yuen et al., 2009, Fakhir et al., 1989), particularly in stage I lesions(Haddadin et al., 1999, Dias et al., 2001). In the present series, the improved 5-year disease-specific survival rate observed with END did not reach significance (100% versus 94%; p=0.344), thus these data are not able to support a recommendation for END in Stage I OSCC.

In the full series of 99 Stage I OSCC cases, most of the regional recurrences (8/9; 88.9%) occurred within 2.2 years after surgery. The incidence of nodal recurrences detected during follow-up at 1-2 years post-surgery is confirmed by the literature(Al Rajhi et al., 2000, Merx et al., 2006, Morton et al., 1994), and confirms the effectiveness of follow-up in very early stage tumours also.

The survival analysis for nodal involvement confirms the importance of TT in prognosis. The literature data on TT and nodal involvement in early stage OSCC generally groups patients with stage I and II lesions together, making it difficult to carry out a comparison with the present results. Although numerous studies have assessed the role of TT in nodal involvement(Pentenero et al., 2005), it is rarely is it possible to extract data from these reports for stage I lesions alone. We found a slightly lower overall incidence of nodal involvement in Stage I OSCC compared with the studies in the literature, (Table 2). This may be a result of pooling stage I and II lesions as mentioned previously. Although the literature(Huang et al., 2009, Pentenero et al., 2005) generally seems to validate the link between TT and nodal involvement, not all authors agree on this issue; a recent study comparing TT and Sentinel Node Biopsy (SNB) found that SNB was more reliable than TT in predicting occult disease(Goerkem et al., 2010). However, this study was based on a series of Stage I and II tumours with a

Deleted: overall
Deleted: I

Field Code Changed

Deleted: the
Deleted: impact
Deleted: also
Deleted: tumour thickness
Deleted: L
Deleted: tumour thickness
Deleted: oral squamous cell carcinoma

Deleted: to
Deleted: Even if there are
Deleted: that
Deleted: tumour thickness
Field Code Changed

Deleted: on
Deleted: The present results report an overall
Deleted: when
Deleted: to
Deleted: studies, as shown in
Deleted: t
Deleted: well
Deleted: due to
Deleted: of
Deleted: -
Deleted: aforementioned

prevalence of SNB-proven nodal involvement of 35.9%, this is not comparable with our study, which assessed a Stage I series with a prevalence of nodal involvement of 14.1%. Nevertheless the cut-off value of 4 mm gave in the present series a lower prevalence of nodal involvement (either at diagnosis or during follow-up).

This study confirms the favourable prognosis overall of stage I OSCC. The evaluation of clinical appearance of microinvasive compared with non-microinvasive lesions is the most important issue of this study and it does emphasize the risk, during clinical examination, of underestimating the malignancy of early lesions that resemble premalignant disorders.

Deleted: Although t

Deleted: overall

Deleted: ,

Deleted: an

Deleted: on

Deleted: at clinical examination

ACKNOWLEDGEMENTS

The Authors thank Mrs. Barbara Wade for her linguistic advice. This study has been supported by "Ricerca Sanitaria Finalizzata Regione Piemonte" and by "Compagnia di San Paolo - Programma Oncologia 2006", Torino, Italy.

Formatted: No underline, Font color: Auto, Italian Italy

TABLE

Table 1. Clinical features related to tumour thickness

| | Tumour thickness | | |
|-------------------------------------|------------------|------------|---------|
| | < 4mm | >= 4mm | |
| Motivation for the visit* | | | p=0.029 |
| Referred by dentist | 11 (34.4%) | 4 (10.5%) | |
| Follow-up of PMD | 10 (31.3%) | 11 (28.9%) | |
| Symptoms | 11 (34.4%) | 23 (60.5%) | |
| Site | | | p=0.583 |
| Tongue | 15 (46.9%) | 39 (58.2%) | |
| Buccal | 7 (21.9%) | 11 (16.4%) | |
| Floor of the mouth | 7 (21.9%) | 9 (13.4%) | |
| Other | 3 (9.4%) | 8 (11.9%) | |
| Clinical aspect | | | P=0.008 |
| Erosion | 7 (21.9%) | 3 (4.5%) | |
| Plaques | 9 (28.1%) | 12 (17.9%) | |
| Patch | 4 (12.5%) | 2 (3.0%) | |
| Ulcer | 6 (18.8) | 29 (43.3%) | |
| Verrucous lesions | 5 (15.6%) | 18 (26.9%) | |
| Node | 1 (3.1%) | 3 (4.5%) | |
| Location | | | p=0.480 |
| Anterior | 14 (43.8%) | 21 (31.3%) | |
| Median | 6 (18.8%) | 16 (23.9%) | |
| Posterior | 12 (37.5%) | 30 (44.8%) | |
| Mucosal type | | | p=0.889 |
| Thin | 22 (68.8%) | 48 (71.6%) | |
| Vestibular | 8 (25.0%) | 14 (20.9%) | |
| Masticatory | 2 (6.3%) | 5 (7.5%) | |
| Symptoms[§] | | | p=0.351 |
| Yes | 15 (46.9%) | 22 (61.1%) | |
| No | 17 (53.1%) | 14 (38.9%) | |
| Tobacco | | | p=0.904 |
| Yes | 15 (46.9%) | 29 (43.3%) | |
| No | 17 (53.1%) | 38 (56.7%) | |
| Alcohol | | | p=0.071 |
| Yes | 8 (25.0%) | 31 (46.3%) | |
| No | 24 (75.0%) | 36 (53.7%) | |

* data available for 70 patients; [§] data available for 68 patients

Deleted: specialist

Table 2. Nodal involvement related to tumour thickness/depth of invasion in Stage I-II lesions

| Author | TNM | Site | Cut-off value | Nodal involvement | |
|--------------------------------|-------------------------------------|-------------|---------------|-------------------|--------|
| | | | | N+/Total | % |
| (Asakage et al., 1998) | T _{1,2} N ₀ | tongue | < 4 mm | 2/17 | 11.76% |
| (Fakih et al., 1989) | T _{1,2} N ₀ | tongue | < 4 mm | 1/12 | 8.33% |
| (Hayashi et al., 2001) | T _{1,2} N ₀ | tongue | < 5 mm | 0/6 | 0.00% |
| (Kim et al., 1993) | T _{1,2} N ₀ | oral cavity | < 3 mm | 8/59 | 13.56% |
| (Kurokawa et al., 2002) | T _{1,2} N ₀ | tongue | < 4 mm | 1/34 | 2.94% |
| (Lim et al., 2004) | T _{1,2} N ₀ | tongue | < 4 mm | 17/38 | 44.74% |
| (Matsuura et al., 1998) | T ₁ N ₀ | tongue | < 8 mm | 13/75 | 17.33% |
| (Mohit-Tabatabai et al., 1986) | T ₁ N ₀ | floor | ≤3.5 mm | 2/43 | 4.65% |
| (Morton et al., 1994) | T _{<3cm} N ₀ | tongue | < 4 mm | 2/9 | 22.22% |
| (Nakagawa et al., 2003) | T _{1,2} N ₀ | tongue | < 4 mm | 38/191 | 19.90% |
| (O'Brien et al., 2003) | T ₁ N ₀ | oral cavity | < 4 mm | 0/27 | 0.00% |
| (O-charoenrat et al., 2003) | T _{1,2} N ₀ | tongue | ≤5 mm | 4/25 | 16.00% |
| (Okamoto et al., 2002) | T _{1,2} N ₀ | tongue | < 4 mm | 2/22 | 9.09% |
| (Po Wing et al., 2002) | T _{1,2} N ₀ | tongue | ≤3 mm | 1/12 | 8.33% |
| (Ross et al., 2004) | T _{1,2} N ₀ | UADT | ≤5 mm | 7/22 | 31.82% |
| (Sheahan et al., 2003) | T _{1,2} N ₀ | oral cavity | ≤5 mm | 0/13 | 0.00% |
| (Shintani et al., 1997) | T _{1,2} N ₀ | tongue | < 5 mm | 2/19 | 10.53% |
| (Yamazaki et al., 1998) | T _{1,2} N ₀ | tongue | < 5 mm | 27/91 | 29.67% |

Deleted: Auhtor

Deleted: Asakage

Field Code Changed ... [1]

Deleted: Fakih

Field Code Changed ... [2]

Deleted: (Fakih et al., 1989)

Deleted: Hayashi

Field Code Changed ... [3]

Deleted: Kim

Field Code Changed ... [4]

Deleted: Kurokawa

Field Code Changed ... [5]

Deleted: Lim

Field Code Changed ... [6]

Deleted: Matsuura

Field Code Changed ... [7]

Deleted: Mohit-Tabatabai

Field Code Changed ... [8]

Deleted: Morton

Field Code Changed ... [9]

Deleted: Nakagawa

Field Code Changed ... [10]

Deleted: O'Brien

Field Code Changed ... [11]

Deleted: O-charoenrat

Field Code Changed ... [12]

Formatted ... [13]

Formatted ... [14]

Formatted ... [15]

Formatted ... [16]

Formatted ... [17]

Formatted ... [18]

Formatted ... [19]

Formatted ... [20]

Formatted ... [21]

Formatted ... [22]

Formatted ... [23]

Formatted ... [24]

Deleted: Okamoto

Formatted ... [25]

Field Code Changed ... [26]

Formatted ... [27]

Deleted: (Okamoto et al., 2002)

Formatted ... [28]

Formatted ... [29]

Formatted ... [30]

Formatted ... [31]

Formatted ... [32]

Formatted ... [33]

Formatted ... [34]

Formatted ... [35]

Formatted ... [36]

Formatted ... [37]

Formatted ... [38]

Deleted: Po Wing

Formatted ... [39]

Field Code Changed ... [40]

Field Code Changed ... [41]

Field Code Changed ... [42]

Field Code Changed ... [43]

1
2
3
4
5
6
7
8
9
10
11
12
13
14
15
16
17
18
19
20
21
22
23
24
25
26
27
28
29
30
31
32
33
34
35
36
37
38
39
40
41
42
43
44
45
46
47
48
49
50
51
52
53
54
55
56
57
58
59
60

FIGURES

Figure 1. Microinvasive carcinoma: clinical aspect resembling a non-homogeneous premalignant lesion (A) and tumour thickness measurement (B) (Haematoxylin-Eosin, 30x)

Deleted:) (

Oral Diseases - Manuscript Copy

REFERENCES

- 1
2
3
4 [Al Rajhi N, Khafaga Y, El Husseiny J, Saleem M, Mourad W, Al Otieschan A and Al Amro A \(2000\).
5 Early stage carcinoma of oral tongue: prognostic factors for local control and survival. *Oral Oncol*
6 **36**: 508-514.](#)
- 7
8 [Asakage T, Yokose T, Mukai K, Tsugane S, Tsubono Y, Asai M and Ebihara S \(1998\). Tumor thickness
9 predicts cervical metastasis in patients with stage I/II carcinoma of the tongue. *Cancer* **82**: 1443-
10 1448.](#)
- 11
12 [Breslow A \(1977\). Problems in the measurement of tumor thickness and level of invasion in
13 cutaneous melanoma. *Hum Pathol* **8**: 1-2.](#)
- 14
15 [Breuninger H, Black B and Rassner G \(1990\). Microstaging of squamous cell carcinomas. *Am J Clin*
16 *Pathol* **94**: 624-627.](#)
- 17
18 [Dias FL, Kligerman J, Matos de Sa G, Arcuri RA, Freitas EQ, Farias T, Matos F and Lima RA \(2001\).
19 Elective neck dissection versus observation in stage I squamous cell carcinomas of the tongue and
20 floor of the mouth. *Otolaryngol Head Neck Surg* **125**: 23-9.](#)
- 21
22 [Fakih AR, Rao RS, Borges AM and Patel AR \(1989\). Elective versus therapeutic neck dissection in
23 early carcinoma of the oral tongue. *Am J Surg* **158**: 309-313.](#)
- 24
25 [Fukano H, Matsuura H, Hasegawa Y and Nakamura S \(1997\). Depth of invasion as a predictive
26 factor for cervical lymph node metastasis in tongue carcinoma. *Head Neck* **19**: 205-210.](#)
- 27
28 [Gandolfo S, Scully C and Carrozzo M \(2006\). *Oral Medicine*, Churchill Livingstone - Elsevier:
29 Philadelphia.](#)
- 30
31 [Goerkem M, Braun J and Stoeckli SJ \(2010\). Evaluation of clinical and histomorphological
32 parameters as potential predictors of occult metastases in sentinel lymph nodes of early
33 squamous cell carcinoma of the oral cavity. *Ann Surg Oncol* **17**: 527-35.](#)
- 34
35 [Gorsky M and Dayan D \(1995\). Referral delay in diagnosis of oro/oropharyngeal cancer in Israel.
36 *Eur J Cancer B Oral Oncol* **31B**: 166-8.](#)
- 37
38 [Haddadin KJ, Soutar DS, Oliver RJ, Webster MH, Robertson AG and MacDonald DG \(1999\).
39 Improved survival for patients with clinically T1/T2, N0 tongue tumors undergoing a prophylactic
40 neck dissection. *Head Neck* **21**: 517-25.](#)
- 41
42 [Hayashi T, Ito J, Taira S and Katsura K \(2001\). The relationship of primary tumor thickness in
43 carcinoma of the tongue to subsequent lymph node metastasis. *Dentomaxillofac Radiol* **30**: 242-
44 245.](#)
- 45
46
47
48
49
50
51
52
53
54
55
56
57
58
59
60

- 1
2 [Howaldt HP, Kainz M, Euler B and Vorast H \(1999\). Proposal for modification of the TNM staging](#)
3 [classification for cancer of the oral cavity. *DOSAK. J Craniomaxillofac Surg* **27**: 275-288.](#)
4
5 [Huang SH, Hwang D, Lockwood G, Goldstein DP and O'Sullivan B \(2009\). Predictive value of tumor](#)
6 [thickness for cervical lymph-node involvement in squamous cell carcinoma of the oral cavity: a](#)
7 [meta-analysis of reported studies. *Cancer* **115**: 1489-97.](#)
8
9
10 [Kim HC, Kusukawa J and Kameyama T \(1993\). Clinicopathologic parameters in predicting cervical](#)
11 [nodal metastasis in early squamous cell carcinoma of the oral cavity. *Kurume Med J* **40**: 183-192.](#)
12
13 [Kligerman J, Lima RA, Soares JR, Prado L, Dias FL, Freitas EQ and Olivatto LO \(1994\).](#)
14 [Supraomohyoid neck dissection in the treatment of T1/T2 squamous cell carcinoma of oral cavity.](#)
15 [*Am.J.Surg.* **168**: 391-394.](#)
16
17 [Kowalski LP, Franco EL, Torloni H, Fava AS, de Andrade Sobrinho J, Ramos G, Oliveira BV and](#)
18 [Curado MP \(1994\). Lateness of diagnosis of oral and oropharyngeal carcinoma: factors related to](#)
19 [the tumour, the patient and health professionals. *Eur J Cancer B Oral Oncol* **30B**: 167-73.](#)
20
21 [Kurokawa H, Yamashita Y, Takeda S, Zhang M, Fukuyama H and Takahashi T \(2002\). Risk factors for](#)
22 [late cervical lymph node metastases in patients with stage I or II carcinoma of the tongue. *Head*](#)
23 [Neck **24**: 731-736.](#)
24
25
26 [Lim SC, Zhang S, Ishii G, Endoh Y, Kodama K, Miyamoto S, Hayashi R, Ebihara S, Cho JS and Ochiai A](#)
27 [\(2004\). Predictive markers for late cervical metastasis in stage I and II invasive squamous cell](#)
28 [carcinoma of the oral tongue. *Clin Cancer Res* **10**: 166-72.](#)
29
30 [Mashberg A and Samit A \(1995\). Early diagnosis of asymptomatic oral and oropharyngeal](#)
31 [squamous cancers. *CA Cancer J Clin* **45**: 328-51.](#)
32
33 [Matsuura K, Hirokawa Y, Fujita M, Akagi Y and Ito K \(1998\). Treatment results of stage I and II oral](#)
34 [tongue cancer with interstitial brachytherapy: maximum tumor thickness is prognostic of nodal](#)
35 [metastasis. *Int J Radiat Oncol Biol Phys* **40**: 535-539.](#)
36
37
38 [Merkx MA, van Gulick JJ, Marres HA, Kaanders JH, Bruaset I, Verbeek A and de Wilde PC \(2006\).](#)
39 [Effectiveness of routine follow-up of patients treated for T1-2N0 oral squamous cell carcinomas of](#)
40 [the floor of mouth and tongue. *Head Neck* **28**: 1-7.](#)
41
42 [Mohit-Tabatabai MA, Sobel HJ, Rush BF and Mashberg A \(1986\). Relation of thickness of floor of](#)
43 [mouth stage I and II cancers to regional metastasis. *Am J Surg* **152**: 351-353.](#)
44
45 [Morton RP, Ferguson CM, Lambie NK and Whitlock RM \(1994\). Tumor thickness in early tongue](#)
46 [cancer. *Arch Otolaryngol Head Neck Surg* **120**: 717-720.](#)
47
48
49
50
51
52
53
54
55
56
57
58
59
60

- 1
2 [Nakagawa T, Shibuya H, Yoshimura R, Miura M, Okada N, Kishimoto S, Amagasa M and Omura K \(2003\). Neck node metastasis after successful brachytherapy for early stage tongue carcinoma. *Radiother Oncol* **68**: 129-135.](#)
- 3
4
5
6
7 [O'Brien CJ, Lauer CS, Fredricks S, Clifford AR, McNeil EB, Bagia JS and Koulmandas C \(2003\). Tumor thickness influences prognosis of T1 and T2 oral cavity cancer--but what thickness? *Head Neck* **25**: 937-945.](#)
- 8
9
10
11 [O-charoenrat P, Pillai G, Patel S, Fisher C, Archer D, Eccles S and Rhys-Evans P \(2003\). Tumour thickness predicts cervical nodal metastases and survival in early oral tongue cancer. *Oral Oncol* **39**: 386-390.](#)
- 12
13
14
15
16 [Okamoto M, Nishimine M, Kishi M, Kiritu T, Sugimura M, Nakamura M and Konishi N \(2002\). Prediction of delayed neck metastasis in patients with stage I/II squamous cell carcinoma of the tongue. *J Oral Pathol Med* **31**: 227-233.](#)
- 17
18
19
20
21 [Pentenero M, Gandolfo S and Carrozzo M \(2005\). Importance of tumor thickness and depth of invasion in nodal involvement and prognosis of oral squamous cell carcinoma: a review of the literature. *Head Neck* **27**: 1080-91.](#)
- 22
23
24
25
26 [Po Wing YA, Lam KY, Lam LK, Ho CM, Wong A, Chow TL, Yuen WF and Wei WI \(2002\). Prognostic factors of clinically stage I and II oral tongue carcinoma-A comparative study of stage, thickness, shape, growth pattern, invasive front malignancy grading, Martinez-Gimeno score, and pathologic features. *Head Neck* **24**: 513-520.](#)
- 27
28
29
30
31 [Ross GL, Soutar DS, MacDonald DG, Shoaib T, Camilleri IG and Robertson AG \(2004\). Improved staging of cervical metastases in clinically node-negative patients with head and neck squamous cell carcinoma. *Ann Surg Oncol* **11**: 213-8.](#)
- 32
33
34
35
36 [Sakai O, Curtin HD, Romo LV and Som PM \(2000\). Lymph node pathology. Benign proliferative, lymphoma, and metastatic disease. *Radiol Clin North Am* **38**: 979-98, x.](#)
- 37
38
39
40
41 [Shah JP and Gil Z \(2008\). Current concepts in management of oral cancer - Surgery. *Oral Oncol*. Sheahan P, O'Keane C, Sheahan JN and O'Dwyer TP \(2003\). Effect of tumour thickness and other factors on the risk of regional disease and treatment of the N0 neck in early oral squamous carcinoma. *Clin Otolaryngol* **28**: 461-71.](#)
- 42
43
44
45
46
47
48 [Shintani S, Matsuura H, Hasegawa Y, Nakayama B and Fujimoto Y \(1997\). The relationship of shape of tumor invasion to depth of invasion and cervical lymph node metastasis in squamous cell carcinoma of the tongue. *Oncology* **54**: 463-467.](#)
- 49
50
51
52
53
54
55
56
57
58
59
60

Sobin L and Wittekind C (2002). *UICC TNM classification of malignant tumours.*, Wiley & Sons: Hoboken, New Jersey.

Thompson SH (1986). Cervical lymph node metastases of oral carcinoma related to the depth of invasion of the primary lesion. *J Surg Oncol* 31: 120-122.

Yamazaki H, Inoue T, Teshima T, Tanaka E, Koizumi M, Kagawa K, Imai A, Yoshida K, Shiomi H, Shimizutani K, Furukawa S, Fuchihata H, Nakamura H and Inoue T (1998). Tongue cancer treated with brachytherapy: is thickness of tongue cancer a prognostic factor for regional control? *Anticancer Res* 18: 1261-1265.

Yuen AP, Ho CM, Chow TL, Tang LC, Cheung WY, Ng RW, Wei WI, Kong CK, Book KS, Yuen WC, Lam AK, Yuen NW, Trendell-Smith NJ, Chan YW, Wong BY, Li GK, Ho AC, Ho WK, Wong SY and Yao TJ (2009). Prospective randomized study of selective neck dissection versus observation for N0 neck of early tongue carcinoma. *Head Neck*.

Deleted: Al Rajhi N, Khafaga Y, El Husseiny J, Saleem M, Mourad W, Al Otieschan A and Al Amro A (2000). Early stage carcinoma of oral tongue: prognostic factors for local control and survival. *Oral Oncol* 36: 508-514.¶

Asakage T, Yokose T, Mukai K, Tsugane S, Tsubono Y, Asai M and Ebihara S (1998). Tumor thickness predicts cervical metastasis in patients with stage I/II carcinoma of the tongue. *Cancer* 82: 1443-1448.¶

Fakih AR, Rao RS, Borges AM and Patel AR (1989). Elective versus therapeutic neck dissection in early carcinoma of the oral tongue. *Am J Surg* 158: 309-313.¶

Fukano H, Matsuura H, Hasegawa Y and Nakamura S (1997). Depth of invasion as a predictive factor for cervical lymph node metastasis in tongue carcinoma. *Head Neck* 19: 205-210.¶

Gandolfo S, Scully C and Carozzo M (2006). *Oral Medicine*, Churchill Livingstone - Elsevier: Philadelphia.¶

Gorsky M and Dayan D (1995). Referral delay in diagnosis of oro/oropharyngeal cancer in Israel. *Eur J Cancer B Oral Oncol* 31B: 166-8.¶

Hayashi T, Ito J, Taira S and Katsura K (2001). The relationship of primary tumor thickness in carcinoma of the tongue to subsequent lymph node metastasis. *Dentomaxillofac Radiol* 30: 242-245.¶

Howaldt HP, Kainz M, Euler B and Vorast H (1999). Proposal for modification of the TNM staging classification for cancer of the oral cavity. DOSAK. *J Craniomaxillofac Surg* 27: 275-288.¶

Huang SH, Hwang D, Lockwood G, Goldstein DP and O'Sullivan B (2009). Predictive value of tumor thickness for cervical lymph-node involvement in squamous cell carcinoma of the oral cavity: a meta-analysis of reported studies. *Cancer* 115: 1489-97.¶

Kim HC, Kusukawa J and Kameyama T (1993). Clinicopathologic parameters in predicting cervical nodal metastasis in early squamous cell carcinoma of the oral cavity. *Kurume Med J* 40: 183-192.¶

Kowalski LP, Franco EL, Torloni H, Fava AS, de Andrade Sobrinho J, Ramos G, Oliveira BV and Curado MP (1994). Lateness of diagnosis of oral and oropharyngeal carcinoma: factors related to the tumour, the patient and health professionals. *Eur J Cancer B Oral Oncol* 30B: 167-73.¶

Kurokawa H, Yamashita Y, Takeda S, Zhang M, Fukuyama H and Takahashi T (2002). Risk factors for late cervical lymph node metastases in patients with stage I or II carcinoma of the tongue. *Head Neck* 24: 731-736.¶

Lim SC, Zhang S, Ishii G, Endoh Y, Kodama K, Miyamoto S, Hayashi R, Ebihara S, Cho JS and Ochiai A (2004). Predictive markers for late cervical metastasis in stage I and II invasive squamous cell carcinoma of the oral tongue. *Clin Cancer Res* 10: 166-72.¶

Mashberg A and Samit A (1995). ... [44]

| | | | |
|----|---|----------------------|-----------------------------|
| 1 | | | |
| 2 | | | |
| 3 | Page 16: [1] Change | Unknown | |
| 4 | Field Code Changed | | |
| 5 | | | |
| 6 | Page 16: [2] Change | Unknown | |
| 7 | Field Code Changed | | |
| 8 | | | |
| 9 | Page 16: [3] Change | Unknown | |
| 10 | Field Code Changed | | |
| 11 | | | |
| 12 | Page 16: [4] Change | Unknown | |
| 13 | Field Code Changed | | |
| 14 | | | |
| 15 | Page 16: [5] Change | Unknown | |
| 16 | Field Code Changed | | |
| 17 | | | |
| 18 | Page 16: [6] Change | Unknown | |
| 19 | Field Code Changed | | |
| 20 | | | |
| 21 | Page 16: [7] Change | Unknown | |
| 22 | Field Code Changed | | |
| 23 | | | |
| 24 | Page 16: [8] Change | Unknown | |
| 25 | Field Code Changed | | |
| 26 | | | |
| 27 | Page 16: [9] Change | Unknown | |
| 28 | Field Code Changed | | |
| 29 | | | |
| 30 | Page 16: [10] Change | Unknown | |
| 31 | Field Code Changed | | |
| 32 | | | |
| 33 | Page 16: [11] Change | Unknown | |
| 34 | Field Code Changed | | |
| 35 | Page 16: [12] Change | Unknown | |
| 36 | Field Code Changed | | |
| 37 | | | |
| 38 | Page 16: [13] Formatted | Dr. Pentenero | 6/17/2010 2:47:00 PM |
| 39 | No underline, Font color: Auto, French Luxembourg | | |
| 40 | | | |
| 41 | Page 16: [14] Formatted | Unknown | |
| 42 | French Luxembourg | | |
| 43 | | | |
| 44 | Page 16: [15] Formatted | Dr. Pentenero | 6/17/2010 2:47:00 PM |
| 45 | No underline, Font color: Auto, French Luxembourg | | |
| 46 | | | |
| 47 | Page 16: [16] Formatted | Unknown | |
| 48 | French Luxembourg | | |
| 49 | | | |
| 50 | Page 16: [17] Formatted | Dr. Pentenero | 6/17/2010 2:47:00 PM |
| 51 | No underline, Font color: Auto, French Luxembourg | | |
| 52 | | | |
| 53 | Page 16: [18] Formatted | Unknown | |
| 54 | French Luxembourg | | |
| 55 | | | |
| 56 | Page 16: [19] Formatted | Dr. Pentenero | 6/17/2010 2:47:00 PM |
| 57 | No underline, Font color: Auto, French Luxembourg | | |
| 58 | | | |
| 59 | | | |
| 60 | | | |

| | | | |
|----|---|----------------------|-----------------------------|
| 1 | | | |
| 2 | | | |
| 3 | Page 16: [22] Formatted | Unknown | |
| 4 | French Luxembourg | | |
| 5 | | | |
| 6 | Page 16: [23] Formatted | Dr. Pentenero | 6/17/2010 2:47:00 PM |
| 7 | No underline, Font color: Auto, French Luxembourg | | |
| 8 | | | |
| 9 | Page 16: [24] Formatted | Unknown | |
| 10 | French Luxembourg | | |
| 11 | Page 16: [25] Formatted | Dr. Pentenero | 6/17/2010 2:47:00 PM |
| 12 | No underline, Font color: Auto, French Luxembourg | | |
| 13 | | | |
| 14 | Page 16: [26] Change | Unknown | |
| 15 | Field Code Changed | | |
| 16 | | | |
| 17 | Page 16: [27] Formatted | Dr. Pentenero | 6/17/2010 2:47:00 PM |
| 18 | No underline, Font color: Auto, French Luxembourg | | |
| 19 | | | |
| 20 | Page 16: [28] Formatted | Unknown | |
| 21 | French Luxembourg | | |
| 22 | Page 16: [29] Formatted | Dr. Pentenero | 6/17/2010 2:47:00 PM |
| 23 | No underline, Font color: Auto, French Luxembourg | | |
| 24 | | | |
| 25 | Page 16: [30] Formatted | Unknown | |
| 26 | French Luxembourg | | |
| 27 | Page 16: [31] Formatted | Dr. Pentenero | 6/17/2010 2:47:00 PM |
| 28 | No underline, Font color: Auto, French Luxembourg | | |
| 29 | | | |
| 30 | Page 16: [32] Formatted | Unknown | |
| 31 | French Luxembourg | | |
| 32 | Page 16: [33] Formatted | Dr. Pentenero | 6/17/2010 2:47:00 PM |
| 33 | No underline, Font color: Auto, French Luxembourg | | |
| 34 | | | |
| 35 | Page 16: [34] Formatted | Unknown | |
| 36 | French Luxembourg | | |
| 37 | Page 16: [35] Formatted | Dr. Pentenero | 6/17/2010 2:47:00 PM |
| 38 | No underline, Font color: Auto, French Luxembourg | | |
| 39 | | | |
| 40 | Page 16: [36] Formatted | Unknown | |
| 41 | French Luxembourg | | |
| 42 | Page 16: [37] Formatted | Dr. Pentenero | 6/17/2010 2:47:00 PM |
| 43 | No underline, Font color: Auto, French Luxembourg | | |
| 44 | | | |
| 45 | Page 16: [38] Formatted | Unknown | |
| 46 | French Luxembourg | | |
| 47 | | | |
| 48 | Page 16: [39] Formatted | Dr. Pentenero | 6/17/2010 2:47:00 PM |
| 49 | No underline, Font color: Auto, French Luxembourg | | |
| 50 | | | |
| 51 | Page 16: [40] Change | Unknown | |
| 52 | Field Code Changed | | |
| 53 | Page 16: [41] Change | Unknown | |
| 54 | Field Code Changed | | |
| 55 | | | |
| 56 | Page 16: [42] Change | Unknown | |
| 57 | Field Code Changed | | |
| 58 | | | |
| 59 | | | |
| 60 | | | |

1
2
3
4
5
6
7
8
9
10
11
12
13
14
15
16
17
18
19
20
21
22
23
24
25
26
27
28
29
30
31
32
33
34
35
36
37
38
39
40
41
42
43
44
45
46
47
48
49
50
51
52
53
54
55
56
57
58
59
60

Page 16: [43] Change

Unknown

Field Code Changed

Page 21: [44] Deleted

Dr. Pentenero

2/18/2010 9:03:00 AM

Al Rajhi N, Khafaga Y, El Husseiny J, Saleem M, Mourad W, Al Otieschan A and Al Amro A (2000). Early stage carcinoma of oral tongue: prognostic factors for local control and survival. *Oral Oncol* **36**: 508-514.

Asakage T, Yokose T, Mukai K, Tsugane S, Tsubono Y, Asai M and Ebihara S (1998). Tumor thickness predicts cervical metastasis in patients with stage I/II carcinoma of the tongue. *Cancer* **82**: 1443-1448.

Fakih AR, Rao RS, Borges AM and Patel AR (1989). Elective versus therapeutic neck dissection in early carcinoma of the oral tongue. *Am J Surg* **158**: 309-313.

Fukano H, Matsuura H, Hasegawa Y and Nakamura S (1997). Depth of invasion as a predictive factor for cervical lymph node metastasis in tongue carcinoma. *Head Neck* **19**: 205-210.

Gandolfo S, Scully C and Carrozzo M (2006). *Oral Medicine*, Churchill Livingstone - Elsevier: Philadelphia.

Gorsky M and Dayan D (1995). Referral delay in diagnosis of oro/oropharyngeal cancer in Israel. *Eur J Cancer B Oral Oncol* **31B**: 166-8.

Hayashi T, Ito J, Taira S and Katsura K (2001). The relationship of primary tumor thickness in carcinoma of the tongue to subsequent lymph node metastasis. *Dentomaxillofac Radiol* **30**: 242-245.

Howaldt HP, Kainz M, Euler B and Vorast H (1999). Proposal for modification of the TNM staging classification for cancer of the oral cavity. DOSAK. *J Craniomaxillofac Surg* **27**: 275-288.

Huang SH, Hwang D, Lockwood G, Goldstein DP and O'Sullivan B (2009). Predictive value of tumor thickness for cervical lymph-node involvement in squamous cell carcinoma of the oral cavity: a meta-analysis of reported studies. *Cancer* **115**: 1489-97.

Kim HC, Kusukawa J and Kameyama T (1993). Clinicopathologic parameters in predicting cervical nodal metastasis in early squamous cell carcinoma of the oral cavity. *Kurume Med J* **40**: 183-192.

1
2
3
4 Kowalski LP, Franco EL, Torloni H, Fava AS, de Andrade Sobrinho J, Ramos G, Oliveira BV
5 and Curado MP (1994). Lateness of diagnosis of oral and oropharyngeal carcinoma:
6 factors related to the tumour, the patient and health professionals. *Eur J Cancer B Oral*
7 *Oncol* **30B**: 167-73.

8
9
10 Kurokawa H, Yamashita Y, Takeda S, Zhang M, Fukuyama H and Takahashi T (2002). Risk
11 factors for late cervical lymph node metastases in patients with stage I or II carcinoma of
12 the tongue. *Head Neck* **24**: 731-736.

13
14
15 Lim SC, Zhang S, Ishii G, Endoh Y, Kodama K, Miyamoto S, Hayashi R, Ebihara S, Cho JS
16 and Ochiai A (2004). Predictive markers for late cervical metastasis in stage I and II
17 invasive squamous cell carcinoma of the oral tongue. *Clin Cancer Res* **10**: 166-72.

18
19
20 Mashberg A and Samit A (1995). Early diagnosis of asymptomatic oral and
21 oropharyngeal squamous cancers. *CA Cancer J Clin* **45**: 328-51.

22
23
24 Matsuura K, Hirokawa Y, Fujita M, Akagi Y and Ito K (1998). Treatment results of stage I
25 and II oral tongue cancer with interstitial brachytherapy: maximum tumor thickness is
26 prognostic of nodal metastasis. *Int J Radiat Oncol Biol Phys* **40**: 535-539.

27
28
29 Merckx MA, van Gulick JJ, Marres HA, Kaanders JH, Bruaset I, Verbeek A and de Wilde PC
30 (2006). Effectiveness of routine follow-up of patients treated for T1-2N0 oral squamous
31 cell carcinomas of the floor of mouth and tongue. *Head Neck* **28**: 1-7.

32
33
34 Mohit-Tabatabai MA, Sobel HJ, Rush BF and Mashberg A (1986). Relation of thickness of
35 floor of mouth stage I and II cancers to regional metastasis. *Am J Surg* **152**: 351-353.

36
37
38 Morton RP, Ferguson CM, Lambie NK and Whitlock RM (1994). Tumor thickness in early
39 tongue cancer. *Arch Otolaryngol Head Neck Surg* **120**: 717-720.

40
41
42 Nakagawa T, Shibuya H, Yoshimura R, Miura M, Okada N, Kishimoto S, Amagasa M and
43 Omura K (2003). Neck node metastasis after successful brachytherapy for early stage
44 tongue carcinoma. *Radiother Oncol* **68**: 129-135.

45
46
47 O'Brien CJ, Lauer CS, Fredricks S, Clifford AR, McNeil EB, Bagia JS and Koulmandas C
48 (2003). Tumor thickness influences prognosis of T1 and T2 oral cavity cancer--but what
49 thickness? *Head Neck* **25**: 937-945.

1
2
3 O-charoenrat P, Pillai G, Patel S, Fisher C, Archer D, Eccles S and Rhys-Evans P (2003).
4 Tumour thickness predicts cervical nodal metastases and survival in early oral tongue
5 cancer. *Oral Oncol* **39**: 386-390.
6
7

8
9 Okamoto M, Nishimine M, Kishi M, Kirita T, Sugimura M, Nakamura M and Konishi N
10 (2002). Prediction of delayed neck metastasis in patients with stage I/II squamous cell
11 carcinoma of the tongue. *J Oral Pathol Med* **31**: 227-233.
12

13
14 Pentenero M, Gandolfo S and Carrozzo M (2005). Importance of tumor thickness and
15 depth of invasion in nodal involvement and prognosis of oral squamous cell carcinoma:
16 a review of the literature. *Head Neck* **27**: 1080-91.
17
18

19
20 Po Wing YA, Lam KY, Lam LK, Ho CM, Wong A, Chow TL, Yuen WF and Wei WI (2002).
21 Prognostic factors of clinically stage I and II oral tongue carcinoma-A comparative study
22 of stage, thickness, shape, growth pattern, invasive front malignancy grading, Martinez-
23 Gimeno score, and pathologic features. *Head Neck* **24**: 513-520.
24
25

26
27 Ross GL, Soutar DS, MacDonald DG, Shoaib T, Camilleri IG and Robertson AG (2004).
28 Improved staging of cervical metastases in clinically node-negative patients with head
29 and neck squamous cell carcinoma. *Ann Surg Oncol* **11**: 213-8.
30
31

32
33 Shah JP and Gil Z (2008). Current concepts in management of oral cancer - Surgery. *Oral*
34 *Oncol*.
35

36
37 Shintani S, Matsuura H, Hasegawa Y, Nakayama B and Fujimoto Y (1997). The
38 relationship of shape of tumor invasion to depth of invasion and cervical lymph node
39 metastasis in squamous cell carcinoma of the tongue. *Oncology* **54**: 463-467.
40
41

42
43 Sobin L and Wittekind C (2002). *UICC TNM classification of malignant tumours.*, Wiley &
44 Sons: Hoboken, New Jersey.
45

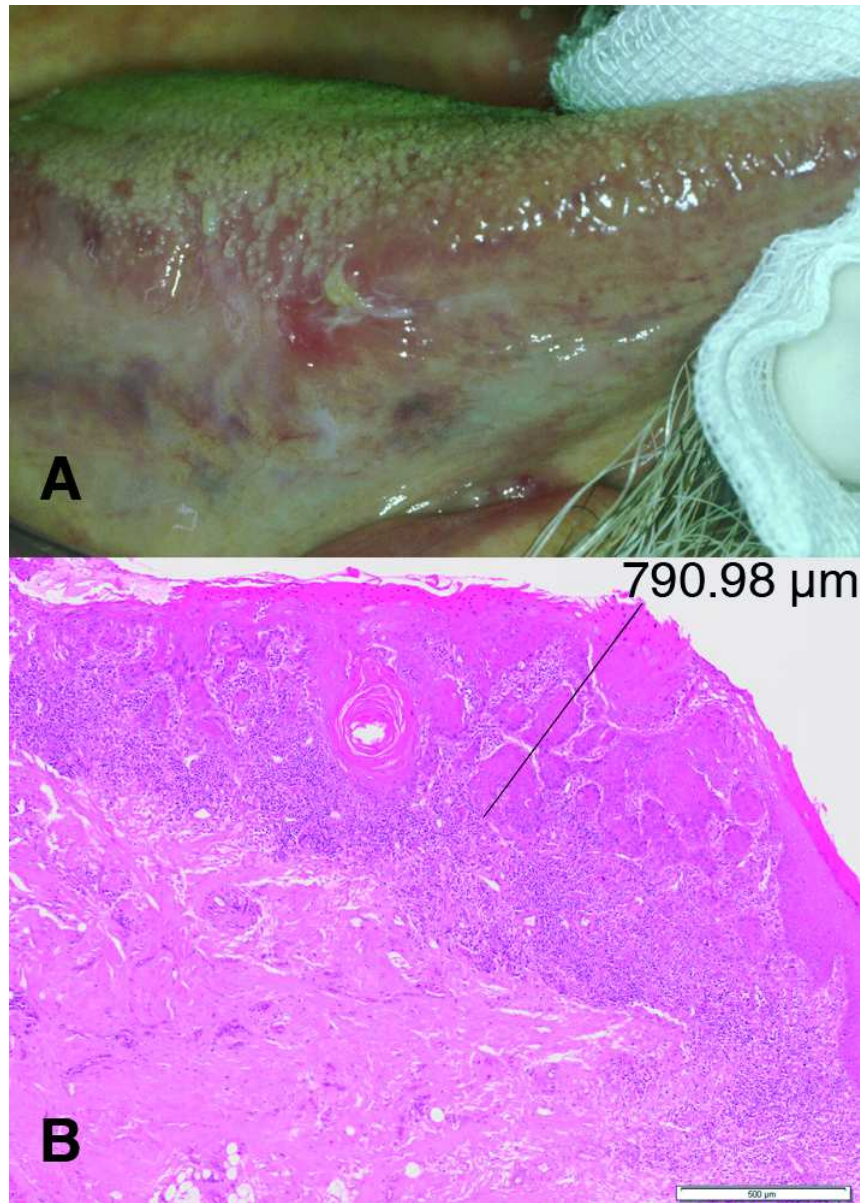
46
47 Yamazaki H, Inoue T, Teshima T, Tanaka E, Koizumi M, Kagawa K, Imai A, Yoshida K,
48 Shiomi H, Shimizutani K, Furukawa S, Fuchihata H, Nakamura H and Inoue T (1998).
49 Tongue cancer treated with brachytherapy: is thickness of tongue cancer a prognostic
50 factor for regional control? *Anticancer Res* **18**: 1261-1265.
51
52

53
54 Yuen AP, Ho CM, Chow TL, Tang LC, Cheung WY, Ng RW, Wei WI, Kong CK, Book KS,
55 Yuen WC, Lam AK, Yuen NW, Trendell-Smith NJ, Chan YW, Wong BY, Li GK, Ho AC, Ho
56
57
58
59
60

1
2
3
4
5
6
7
8
9
10
11
12
13
14
15
16
17
18
19
20
21
22
23
24
25
26
27
28
29
30
31
32
33
34
35
36
37
38
39
40
41
42
43
44
45
46
47
48
49
50
51
52
53
54
55
56
57
58
59
60

WK, Wong SY and Yao TJ (2009). Prospective randomized study of selective neck dissection versus observation for N0 neck of early tongue carcinoma. *Head Neck*.

Oral Diseases - Manuscript Copy



Microinvasive carcinoma: clinical aspect resembling a non-homogeneous premalignant lesion (A) and tumour thickness measurement (B) (Haematoxylin-Eosin, 30x) 60x84mm (300 x 300 DPI)